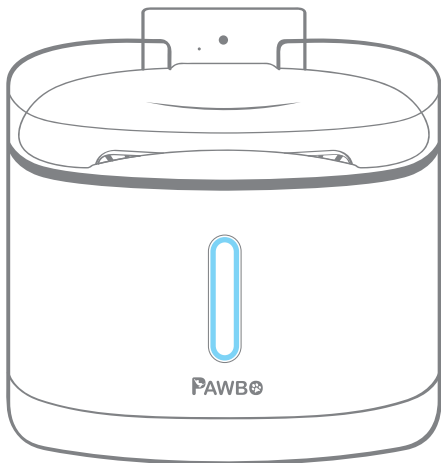


**PAWBO** Spring

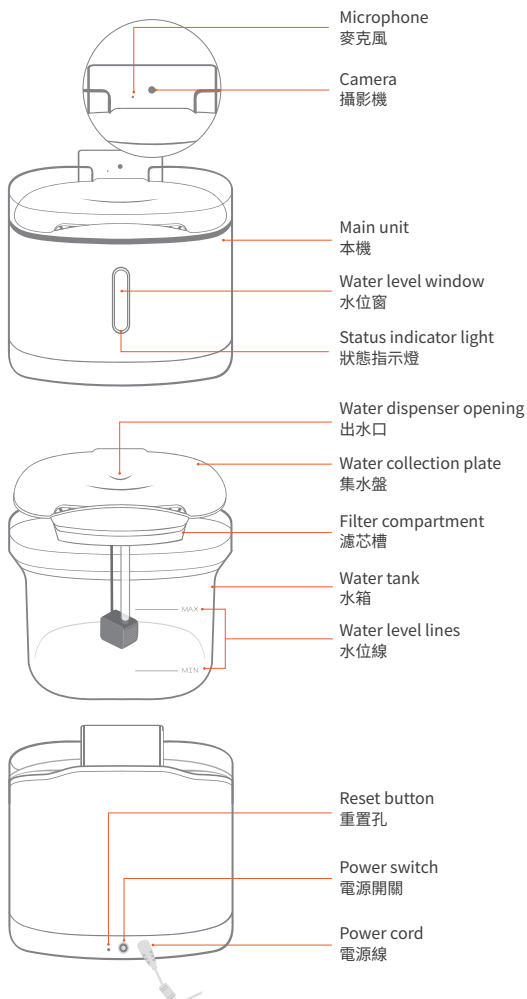
寵物愛喝水智慧泉



**Quick Start Guide**

**快速使用指南**

## Features 外觀



Download App  
下載App

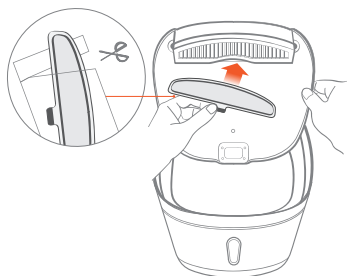


Pawbo Spring



## Setting Up

### 安裝步驟



①

#### Install the filter

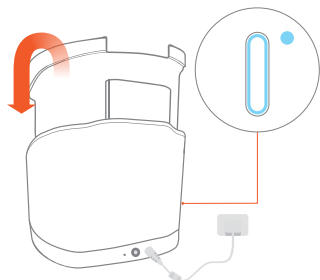
Remove the outer wrapping from the filter. Pick up the water collection plate and insert the filter into the filter compartment on the underside of the water collection plate.

\* Recommended filter use duration: 5-6 weeks.

#### 安裝濾芯

拆除濾芯外層的包裝袋，拿起集水盤，將濾芯插入濾芯槽內側插槽。

\* 建議濾芯使用週期5-6週。



②

#### Switch on Pawbo Spring

A. Plug in and switch on. The status indicator light should be flashing in constant blue.

B. Remove the water tank from the main unit and set it aside gently.

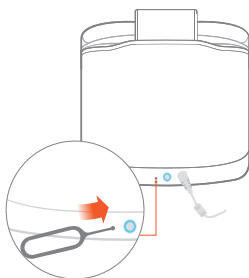
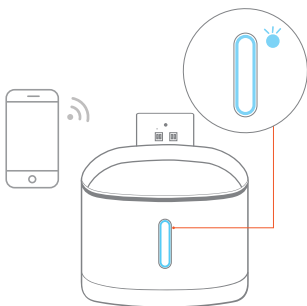
#### 開啟電源

A. 請將產品插電並開啟電源，此時水位窗燈號為藍燈長亮。

B. 請將水箱拿起，輕放於旁邊。

## Re-pairing and Changing Network Settings

### 重新配對與更換網路設定



③

#### Launch the Pawbo Spring app and proceed with setup

A. When the status indicator light is flashing blue, it means the product is pairing.

B. Launch the Pawbo Spring app and select "Pawbo Spring", then follow the provided steps to complete pairing. Upon successful pairing, the light will flash slowly in blue. Fill the water tank with the recommended amount of water and place back inside the main unit.

\* The light flash slowly in red when the water level is low (no water).

#### 開啟Pawbo Spring App來進行設定

A. 當水位窗燈號變成藍燈閃爍表示產品進入配對狀態。

B. 打開“Pawbo Spring”App選取“Pawbo Spring”，跟著步驟進行配對，配對成功後會變成藍燈呼吸狀態，再將水箱加入建議水量放回本機內。

\* 低(無)水量時為紅燈呼吸狀態。

If you are unable to pair your phone with the product, or if the network settings have been changed, please re-pair. Insert a pin into the reset button next to the power button for around 3 seconds, until the status indicator light is flashing blue. The product will enter pairing mode. Complete pairing by following the steps on the app.

當手機與產品無法配對，或更換網路設定時，請重新配對。將卡針插到電源鈕旁邊的重置孔約3秒，看到水位窗的藍燈閃爍，開始進入配對狀態，再按照App上的步驟完成配對。

## Pair iPuppyGo with a Mobile Phone

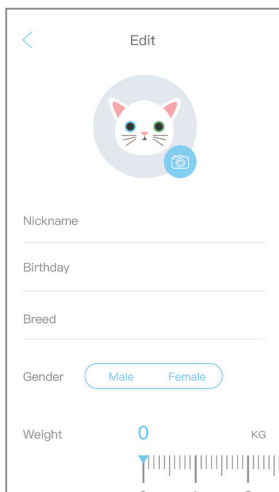
### 寵物智慧釦與手機配對



①

Scan the QR code on the back of the smart activity tracker box. After successful pairing, you will receive real-time notifications for your pet's daily water intake.

請「掃描」智慧釦外盒背面 QR-code，完成配對後，能獲得寵物每日飲水量即時通知。



②

If you have multiple pets each wearing a different tracker, edit the name and photo for each pet to easily identify all of the pets wearing a tracker.

當有多隻寵物配戴時，編輯照片和寵物資訊，即可輕鬆辨識配戴中的寵物。

# Download the iPuppyGo App

## iPuppyGo App 下載



Besides water intake, you can also monitor your pet's daily activity levels, sleep, mood, and calories burned. This app turns walks into a treasure hunt game. Go on walks with your pet and receive awesome prizes!

Download now by searching for iPuppyGo in the Apple App Store or Google Play.

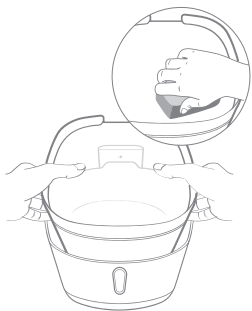
除了飲水量，同時了解寵物每日活動量、睡眠、心情、卡路里消耗等健康數據，還可以散步玩寵物尋寶遊戲享更多好康寶物。

現在前往App Store或 Google Play搜尋 iPuppyGo。

\* Each smart activity tracker can only be paired to one pet. If you would like to monitor multiple pets' drinking habits, please visit the PAWBO website to purchase additional smart activity trackers at a discount.

\* 每個智慧釦僅能配對一隻寵物，如想了解更多寵物個別飲水量，請上PAWBO官網，享智慧釦加價購優惠。

## Change Water or Clean the Product without Powering Off 免斷電換水清洗



No need to turn off when cleaning. Simply remove the water tank, wash with a sponge (use a natural detergent if greasy), then refill with water to the MAX fill line and return the container to its original location.

\* Do not wash with acidic or chloride-based detergents, such as bleach.

\* Do not scrub the water container or the water collection plate.

\* When filling up, do not fill too much over or under the recommended water level.

無需斷電，直接將水箱取出，使用海綿清洗後（如有油膩請用天然洗劑）；裝滿水至Max處再放回。

\* 請洗時請勿使用酸性洗劑、氯化物（如漂白劑）。

\* 請勿使用刷子刷洗水箱與集水盤。

\* 裝水時，請勿過低或過高於建議水位。

## Automatic Software Upgrade 軟體自動升級

The product will upgrade automatically from time to time to provide better and more stable services.

Software upgrade light status:

- Constant blue (when this happens, the water will stop flowing)
- ↓
- ⚡ Quick flashing blue
- ↓
- Constant blue
- ↓
- Slow flashing blue: upgrade successful

\* Do not power off during software upgrades

本產品會不定期執行自動升級，以提供更好更穩定的服務。

當遇到軟體升級時的燈光狀態：

- 藍燈長亮（此時產品的水將停止流動）
- ↓
- ⚡ 藍燈閃爍
- ↓
- 藍燈長亮
- ↓
- 藍燈呼吸：升級成功

\* 軟體升級時，請勿關閉電源。

## Light Status

### 燈號狀態

#### Regular use

Blue light	● Constant	⚡ Quick flashing	● Slow flashing
Status	Power is turned on	Device is pairing	Device is in stand-by mode

#### Unusual Events Notification

Red light	● Constant	⚡ Quick flashing	● Slow flashing
Status	Accessing recording files on device	Unable to connect to the network	Low water level

#### 常態使用

藍燈	● 長亮	⚡ 閃爍	● 呼吸
狀態	開啟電源， 機器開始啟動	設備進入配對狀態	裝置處於待機狀態

#### 異常提醒

紅燈	● 長亮	⚡ 閃爍	● 呼吸
狀態	存取裝置錄影檔案	網路不通	水量不足



## Caution

### 注意事項

- To prevent short-circuiting or breakage, do not pull on the power cord when moving or storing the product.
  - To prevent electrical shock, do not plug or unplug the product with wet hands.
  - Do not use unsuitable electrical outlets.
  - Do not wash with acidic or chloride-based detergents, such as bleach. Do not scrub.
  - Stop use immediately if the product is making noises or is hot.
  - Do not disassemble the product or its internal hardware.
- 
- 搬運和收納時請勿拉扯電源線，會發生短路或斷線。
  - 當手潮濕時，請勿插拔電源插頭，以免造成觸電。
  - 請勿使用不合適的電源插座。
  - 勿使用酸性的洗滌劑、漂白劑等氯化物，勿使用刷子刷洗。
  - 若產品產生雜音或高溫的狀況時，請立即停止使用。
  - 請勿自行拆卸產品內部硬體結構。

## Specs 規格

Product Name : Pawbo Spring  
Model : PPC-PW01  
Input : 5V  $\equiv$  1A (micro USB)  
Adapter : 100-240V ~ 50/60Hz  
Weight : 2500g  
Dimensions : (H)250x(W)243x(L)258 mm  
Capacity : 3L

產品名稱：寵物愛喝水智慧泉  
型號：PPC-PW01  
輸入：5V  $\equiv$  1A (micro USB)  
電源供應器：100-240V ~ 50/60Hz  
產品重量：2500g  
外型尺寸：(H)250x(W)243x(L)258 mm  
容量：3L

## Package Content 包裝內容物

- Pawbo Spring (PPC-PW01)
  - iPuppyGo-Smart pet activity tracker
  - Quick Start Guide / Warranty Card / Notices
  - Filter(3 included)
  - Hose
  - Adapter
- 
- Pawbo Spring 寵物愛喝水智慧泉 (PPC-PW01)
  - 寵物智慧鈎
  - 快速使用指南 / 保固卡 / 宣告書
  - 濾芯(3入)
  - 水管
  - 電源供應器



MADE IN CHINA

## Warranty Policy 保固政策

The warranty for this product is valid for 1 year from the original date of purchase (receipt date). If the receipt is lost, the date of manufacture will be regarded as the start date of the warranty period. If the laws of your country/region of purchase require a warranty period longer than 1 year, the warranty period will be as specified by such laws of the said country/region.

Warranty Exclusion Provisions:

During the consumer's use of the product, the warranty does not cover the following:

- Malfunction or damage, or loss of product parts as a result of improper care on the part of the customer.
- Human-induced damages (such as collisions or accidents), or malfunctions caused by not following the manual.
- Disassembly, modifications, or maintenance to the product done by a non-authorized party.
- Warranty certificate and/or valid receipt missing, or the warranty period for the product has ended.
- Damages or malfunctions caused by force majeure factors (such as fire, lightning, earthquakes).
- Other malfunctions or damages caused by factors not related to the product quality.
- Consumables (filters, smart pet activity tracker battery) are not covered by the warranty.

本產品保固期限為原始購買日期(發票日期)1年。如果您的發票丟失，保修期將自該產品生產日起計算。如果您購買的國家和/或地區的法律規定保修期長於1年，則保修期依據您購買的國家/地區的法律決定。

非保修條例：

- 用戶在使用過程中，以下情況下不屬於保修範圍：
- 因用戶保管不當而造成的故障和損壞，或造成產品零部件的丟失；
- 由於人為因素造成的破壞(如碰撞，事故)或未按照說明書使用所造成的故障；
- 私自拆卸，改裝產品，維修等；
- 無保修憑證，缺失有效發票，產品已過保修期；
- 不可抗力(如火災，雷擊，地震等)造成的故障，損壞；
- 其他非因產品本身質量問題導致的故障或損壞。
- 消耗品(濾芯，寵物鉤內的鈕扣電池)不在保修範圍內。

## Additional Product Information & Customer Service 更多產品資訊&客服

For more Pawbo Spring product information, or to check out other fun remote pet interaction products, please visit the PAWBO website : [www.pawbo.com/tw/](http://www.pawbo.com/tw/)

Customer service: [service@pawbo.com](mailto:service@pawbo.com)

如果需要Pawbo Spring更多產品訊息或是尋找更多有趣的寵物遠距互動應用，歡迎前往PAWBO官網 [www.pawbo.com/tw/](http://www.pawbo.com/tw/)。 客服信箱[service@pawbo.com](mailto:service@pawbo.com)



# CE Declaration of Conformity

We,

**Pawbo Incorporated**

6F., No.68, Ruiguang Rd., Neihu Dist., Taipei City 114, Taiwan

Contact Person: Mr. Hsiao Hung Chin, e-mail: dan.x@pawbo.com

And,

**Acer Italy s.r.l.**

Via Lepetit, 40, 20020 Lainate (MI) Italy

Tel: +39-02-939-921 ,Fax: +39-02 9399-2913

www.acer.it

Declare under our own responsibility that the product:

**Product: Pawbo Spring**

**Trade Name: PAWBO**

Regulation Model Number	PPC-PW01
-------------------------	----------

We hereby declare above product is in compliance with the essential requirements and other relevant Union harmonization legislation of below Directives.

References to the relevant harmonized standards used or references to the other technical specifications in relation to which conformity is declared:

EMCD Directive :  2014/30/EU

- |   |   |
|---|---|
| <input checked="" type="checkbox"/> EN 55014-1:2006+A1+2009+A2:2011 |   |
| <input checked="" type="checkbox"/> EN 55014-2:1997+A1:2001+A2:2008 |   |
| <input checked="" type="checkbox"/> EN 61000-3-3:2013               | <input checked="" type="checkbox"/> EN 61000-3-2:2014 Class A |
| <input checked="" type="checkbox"/> EN 301-489-1 V2.1.1             | <input checked="" type="checkbox"/> EN 301-489-17 V3.1.1      |

RED Directive :  2014/53/EU

- |   |   |
|---|---|
| <input checked="" type="checkbox"/> EN 300328: V2.1.1 | <input checked="" type="checkbox"/> EN 62311:2008 |
| <input checked="" type="checkbox"/> EN 62479:2010     |   |

RoHS Directive: 2011/65/EU

- |   |
|---|
| <input checked="" type="checkbox"/> EN 50581:2012 |
|---|

Year to begin affixing CE marking 2018.

March, 15, 2018

Daniel Xiao / Manager  
Regulation, Pawbo Inc.

Date

## FCC Declaration of Conformity

Federal Communication Commission Interference Statement  
This device complies with Part 15 of the FCC Rules. Operation is subject to the following two conditions: (1) This device may not cause harmful interference, and (2) this device must accept any interference received, including interference that may cause undesired operation.

The following local manufacturer/Importer is responsible for this declaration:

Product: Pawbo Spring  
Trade Name: PAWBO  
Model number: PPC-PW01  
Name of Responsible Party: Acer America Corporation  
Address of Responsible Party:  
333 West San Carlos St., Suite 1500 San Jose, CA 95110, U. S. A

### IMPORTANT NOTE:

This Class B digital apparatus complies with Canadian ICES-003.  
Cet appareil numérique de la classe B conforme à la norme NMB-003 du Canada.

Operation is subject to the following two conditions: (1) this device may not cause interference, and (2) this device must accept any interference, including interference that may cause undesired operation of the device.

L'exploitation est autorisée aux deux conditions suivantes : (1) l'appareil ne doit pas produire de brouillage, et (2) l'utilisateur de l'appareil doit accepter tout brouillage radioélectrique subi, même si le brouillage est susceptible d'en compromettre le fonctionnement.

### 台灣無線設備的警告聲明

經型式認證合格之低功率射頻電機，非經許可，公司、商號或使用者均不得擅自變更頻率、加大功率或變更原設計之特性及功能。低功率射頻電機之使用不得影響飛航安全及干擾合法通信；經發現有干擾現象時，應立即停用，並改善至無干擾時方得繼續使用。前項合法通信，指依電信法規定作業之無線電通信。低功率射頻電機須忍受合法通信或工業、科學及醫療用電波輻射性電機設備之干擾。

**FCC Statement**

This equipment has been tested and found to comply with the limits for a Class B digital device, pursuant to part 15 of the FCC Rules. These limits are designed to provide reasonable protection against harmful interference in a residential installation. This equipment generates, uses and can radiate radio frequency energy and, if not installed and used in accordance with the instructions, may cause harmful interference to radio communications. However, there is no guarantee that interference will not occur in a particular installation. If this equipment does cause harmful interference to radio or television reception, which can be determined by turning the equipment off and on, the user is encouraged to try to correct the interference by one or more of the following measures:

- Reorient or relocate the receiving antenna.
- Increase the separation between the equipment and receiver.
- Connect the equipment into an outlet on a circuit different from that to which the receiver is connected.
- Consult the dealer or an experienced radio/TV technician for help.

**FCC Radiation Exposure Statement**

This device complies with FCC radiation exposure limits set forth for an uncontrolled environment and it also complies with Part 15 of the FCC RF Rules. This equipment must be installed and operated in accordance with provided instructions and the antenna(s) used for this transmitter must be installed to provide a separation distance of at least 20 cm from all persons and must not be co-located or operating in conjunction with any other antenna or transmitter. End-users and installers must be provided with antenna installation instructions and consider removing the no-collocation statement.

This device complies with Part 15 of the FCC Rules. Operation is subject to the following two conditions:

- (1) this device may not cause harmful interference, and
- (2) this device must accept any interference received, including interference that may cause undesired operation.

**Caution!**

Any changes or modifications not expressly approved by the party responsible for compliance could void the user's authority to operate the equipment.

This product supports Bluetooth communication between Pawbo Spring and iPuppyGo. According to the Bluetooth signal to detect your pet closing and drinking.

本產品支援藍牙通訊，專為寵物智慧如所發送的藍牙信號接收使用，為偵測寵物靠近喝水之依據。



# Pawbo Inc.

## Product Warranty 產品保固服務卡

---

Please retain the original purchase receipt or approval in order to protect your right of free warranty service.

務必保留原購買收據或是發票，以保障您的保固權益。

---

Serial Number  
產品序號

---

Purchase Date  
購買日期

---

Dealer stamps  
經銷商蓋印處

---



Manufacturer : Pawbo Inc.  
6F, No.68, Ruiguang Rd., Neihu Dist., Taipei City 114, Taiwan  
E-mail : [service@pawbo.com](mailto:service@pawbo.com)  
<https://www.pawbo.com/us/support/>

波寶創新科技股份有限公司  
地 址：台北市內湖區瑞光路68號6樓  
客服：service@pawbo.com  
<https://www.pawbo.com/tw>