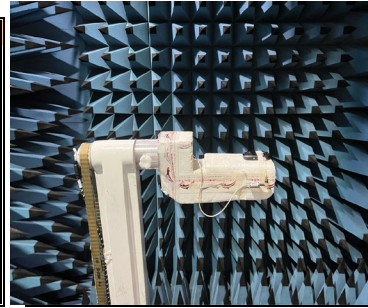


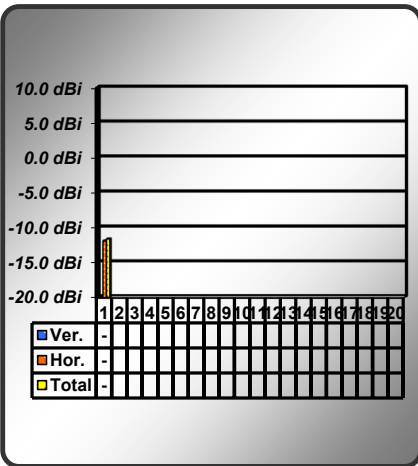
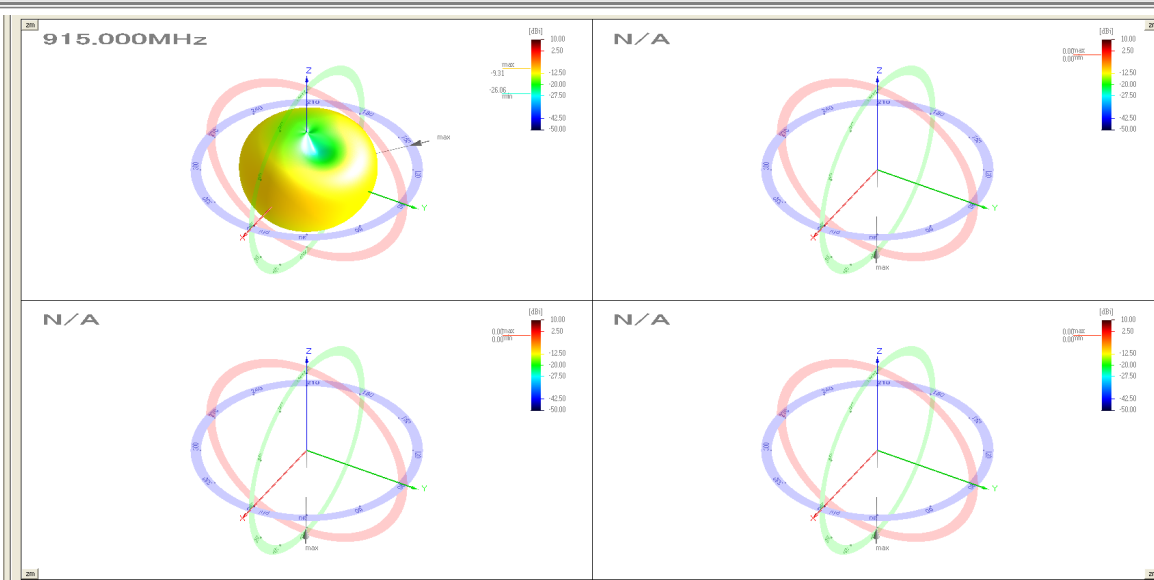
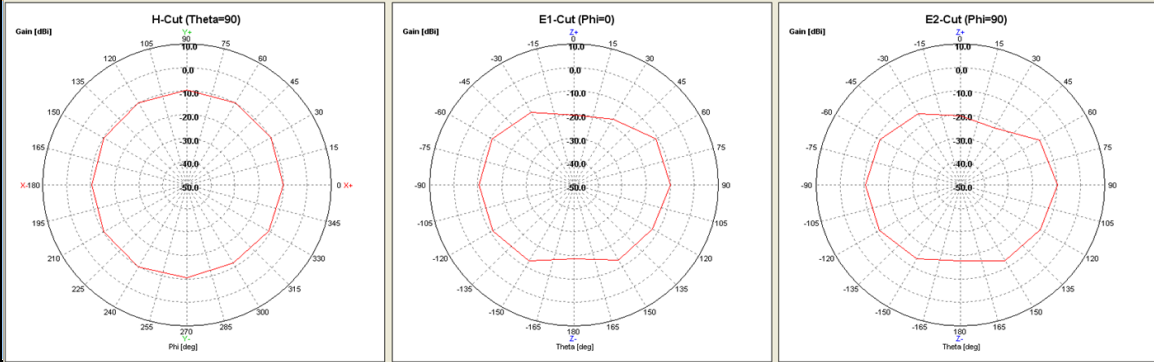
# Antenna Pattern & Gain Report

<b>Manufacturer</b>	SEGI
<b>Model Name</b>	TR4650A
<b>Tester Name</b>	겔트로닉스 (박진완 수석 연구원)
<b>Test Date</b>	2022-10-06 16:08~16:12
<b>IF BW</b>	100 Hz
<b>Port Power</b>	0.00 dBm
<b>Equipment</b>	MTG : Anechoic Chamber Horn ANT : HA-07M18G-NF Network Analyzer : Agilent N5230A
<b>Ant Type</b>	Helical Ant
<b>Meas Step</b>	30°



Frequency	Efficiency	Average Gain			Max Gain			Max Position	Directivity
		Ver	Hor	Total	Ver	Hor	Total		
915.000000 MHz	6.8 %	-23.9 dBi	-11.9 dBi	-11.7 dBi	-18.0 dBi	-9.8 dBi	-9.7 dBi	Theta45/Pie275	2.75 dBi

## Antenna Pattern



### test procedure

No	Description
FA1	Anechoic Chamber
EQ1	Network Analyzer
EQ2	Wireless Communications Test Set
EQ3	System Controller
EQ4	System Monitor
N1	Azimuth Positioner
N2	Turn-Table & Linear Slide
N3	3D Transparent Positioner
N4	Positioner Controller
AN1	Dual Polarized Transmit Antenna
EUT	AUT

RF(TX) / RF(RX) / Polarization control with RF Switch / Fiber Optic Convert & Cable / GPIB Inter-Connection