

TEST REPORT

Reference No...... : WTD22X04080302W
FCC ID..... : 2AEPISILVERMAXPRO2
Applicant : COLOMBIANA DE COMERCIO S.A.
Address : Calle 1 No.50D-06,Cristo Rey,Guayabal,Colombia
Manufacturer : Sichuan Koobee Communication Equipment Co., Ltd.
Address : 3 Floor, Building 2, 69 Gangyuan Road West Section, Lingang
Development Zone, Yibin City, Sichuan Province, China
Product Name : Smartphone
Model No...... : Silver Max Pro-2
FCC Part 2.1093
Standards : IEEE Std C95.1: 2019
IEEE Std C95.3: 2002 + Rev. 2008
IEC/IEEE 62209-1528:2020
Date of Receipt sample : 2022-04-25
Date of Test..... : 2022-05-06 to 2022-05-18
Date of Issue : 2022-05-19
Test Report Form No. : WTX_IEEE62209_1528_2020W
Test Result..... : **Pass**

Remarks:

The results shown in this test report refer only to the sample(s) tested, this test report cannot be reproduced, except in full, without prior written permission of the company. The report would be invalid without specific stamp of test institute and the signatures of approver.

Prepared By:

Waltek Testing Group (Shenzhen) Co., Ltd.

Address: 1/F., Room 101, Building 1, Hongwei Industrial Park, Liuxian 2nd Road,
Block 70 Bao'an District, Shenzhen, Guangdong, China

Tel.: +86-755-33663308 Fax.: +86-755-33663309 Email: sem@waltek.com.cn

Tested by:

Jack Sun

Jack Sun

Approved by:

Silin Chen

Silin Chen

TABLE OF CONTENTS

1. General Information4
 1.1 Product Description for Equipment Under Test (EUT)4
 1.2 Test Standards5
 1.3 Test Methodology5
 1.4 Test Facility5

2. Summary of Test Results6

3. Specific Absorption Rate (SAR).....7
 3.1 Introduction.....7
 3.2 SAR Definition7

4. SAR Measurement System8
 4.1 The Measurement System8
 4.2 Probe8
 4.3 Probe Calibration Process10
 4.4 Phantom11
 4.5 Device Holder11
 4.6 Test Equipment List12

5. Tissue Simulating Liquids13
 5.1 Composition of Tissue Simulating Liquid13
 5.2 Tissue Dielectric Parameters for Head and Body Phantoms14
 5.3 Tissue Calibration Result15

6. SAR Measurement Evaluation16
 6.1 Purpose of System Performance Check16
 6.2 System Setup16
 6.3 Validation Results18

7. EUT Testing Position19
 7.1 Define Two Imaginary Lines on The Handset19
 7.2 Cheek Position20
 7.3 Tilted Position20
 7.4 Body Position21
 7.5 EUT Antenna Position21
 7.6 EUT Testing Position22

8. SAR Measurement Procedures23
 8.1 Measurement Procedures23
 8.2 Spatial Peak SAR Evaluation23
 8.3 Area & Zoom Scan Procedures24
 8.4 Volume Scan Procedures24
 8.5 SAR Averaged Methods24
 8.6 Power Drift Monitoring24

9. SAR Test Result25
 9.1 Conducted RF Output Power25
 9.2 Test Results for Standalone SAR Test28

10. Measurement Uncertainty33
 10.1 Uncertainty for SAR Test33

Annex A. Plots of System Performance Check35
Annex B. Plots of SAR Measurement45
Annex C. EUT Photos65
Annex D. Test Setup Photos67
Annex E. Calibration Certificate71

Report version

Version No.	Date of issue	Description
Rev.00	2022-05-19	Original
/	/	/

1. General Information

1.1 Product Description for Equipment Under Test (EUT)

General Description of EUT:	
Product Name:	Smartphone
Brand Name:	Kalley
Model No.:	Silver Max Pro-2
Adding Model(s):	/
Rated Voltage:	DC 3.87V
Battery Capacity:	/
<i>Note: The test data is gathered from a production sample provided by the manufacturer.</i>	

Technical Characteristics of EUT:	
U-NIII	
Support Standards:	802.11a, 802.11n-HT20/40,802.11ac-HT20/40/80
Frequency Range:	U-NIII-1: 5180-5240MHz, U-NIII-2A: 5260-5320MHz, U-NIII-2C: 5500-5700MHz, U-NIII-3: 5745-5825MHz
RF Output Power:	12.65dBm (Conducted)
Type of Modulation:	BPSK,QPSK, 16QAM, 64QAM, 256-QAM
Type of Antenna:	Integral Antenna
Antenna Gain:	-1.8dBi
WIFI(2.4GHz)	
Support Standards:	802.11b, 802.11g, 802.11n-HT20/40
Frequency Range:	2412-2462MHz for 11b/g/n(HT20), 2422-2452MHz for 802.11n(HT40)
RF Output Power:	14.54dBm (Conducted)
Type of Modulation:	DBPSK,BPSK,DQPSK,QPSK,16QAM,64QAM
Quantity of Channels:	11 for 802.11b/g/n(HT20); 7 for 802.11n(HT40)
Channel Separation:	5MHz
Type of Antenna:	Integral Antenna
Antenna Gain:	-1.5dBi
<i>Note: 1. Note: The Antenna Gain is provided by the customer and can affect the validity of results..</i>	
<i>2.This report only evaluates WIFI SAR.</i>	

1.2 Test Standards

IEEE Std C95.1: 2019, IEEE Std C95.3: 2002 + Rev. 2008, IEC/IEEE 62209-1528:2020, KDB 447498 D01 v06, KDB 648474 D04 v01r03, KDB 248227 D01 v02r02, KDB 941225 D01 v03r01, KDB 941225 D05 v02r05 , and KDB 865664 D01 v01r04 and KDB 865664 D02 v01r02.

The objective is to determine compliance with FCC Part 2.1093 of the Federal Communication Commissions rules.

Maintenance of compliance is the responsibility of the manufacturer. Any modification of the product, which result in lowering the emission, should be checked to ensure compliance has been maintained.

1.3 Test Methodology

All measurements contained in this report were conducted with KDB 865664 D01 v01r04 and KDB 865664 D02 v01r02. The public notice KDB 447498 D01 v06 for Mobile and Portable Devices RF Exposure Procedure also.

1.4 Test Facility

Address of the test laboratory

Laboratory: Waltek Testing Group (Shenzhen) Co., Ltd.

Address: 1/F., Room 101, Building 1, Hongwei Industrial Park, Liuxian 2nd Road,Block 70 Bao'an District, Shenzhen, Guangdong, China

FCC – Registration No.: 125990

Waltek Testing Group (Shenzhen) Co., Ltd. EMC Laboratory has been registered and fully described in a report filed with the FCC (Federal Communications Commission). The acceptance letter from the FCC is maintained in our files. The Designation Number is CN5010. Test Firm Registration Number is 125990.

Industry Canada (IC) Registration No.: 11464A

The 3m Semi-anechoic chamber of Waltek Testing Group (Shenzhen) Co., Ltd. has been registered by Certification and Engineering Bureau of Industry Canada for radio equipment testing with Registration No.: 11464A.

2. Summary of Test Results

The maximum results of Specific Absorption Rate (SAR) have found during testing are as follows:

Frequency Band	Head SAR	Body-worn (10mm Gap)	Hotspot (10mm Gap)	SAR _{1g} Limit (W/kg)
	Maximum SAR _{1g} (W/kg)	Maximum SAR _{1g} (W/kg)	Maximum SAR _{1g} (W/kg)	
U-NIII	0.783	0.302	0.302	1.6
WLAN 2.4GHz	0.667	0.405	0.405	1.6

The device is in compliance with Specific Absorption Rate (SAR) for general population/uncontrolled exposure limits (1.6 W/kg) specified in FCC 47 CFR Part 2.1093 and IEEE Std C95.1: 2019, and had been tested in accordance with the measurement methods and procedure specified in IEC/IEEE 62209-1528:2020 and KDB 865664 D01 v01r04 and KDB 865664 D02 v01r02.

3. Specific Absorption Rate (SAR)

3.1 Introduction

SAR is related to the rate at which energy is absorbed per unit mass in an object exposed to a radio field. The SAR distribution in a biological body is complicated and is usually carried out by experimental techniques or numerical modeling. The standard recommends limits for two tiers of groups, occupational/controlled and general population/uncontrolled, based on a person's awareness and ability to exercise control over his or her exposure. In general, occupational/controlled exposure limits are higher than the limits for general population/uncontrolled.

3.2 SAR Definition

The SAR definition is the time derivative (rate) of the incremental energy (dW) absorbed by (dissipated in) an incremental mass (dm) contained in a volume element (dv) of a given density (ρ). The equation description is as below:

$$\text{SAR} = \frac{d}{dt} \left(\frac{dW}{dm} \right) = \frac{d}{dt} \left(\frac{dW}{\rho dv} \right)$$

SAR is expressed in units of Watts per kilogram (W/kg)

SAR measurement can be either related to the temperature elevation in tissue by

$$\text{SAR} = C \left(\frac{\delta T}{\delta t} \right)$$

Where: C is the specific heat capacity, δT is the temperature rise and δt is the exposure duration, or related to the electrical field in the tissue by

$$\text{SAR} = \frac{\sigma |E|^2}{\rho}$$

Where: σ is the conductivity of the tissue, ρ is the mass density of the tissue and E is the RMS electrical field strength.

However for evaluating SAR of low power transmitter, electrical field measurement is typically applied.

4. SAR Measurement System

4.1 The Measurement System

Comosar is a system that is able to determine the SAR distribution inside a phantom of human being according to different standards. The Comosar system consists of the following items:

- Main computer to control all the system
- 6 axis robot
- Data acquisition system
- Miniature E-field probe
- Phone holder
- Head simulating tissue

The following figure shows the system.



The EUT under test operating at the maximum power level is placed in the phone holder, under the phantom, which is filled with head simulating liquid. The E-Field probe measures the electric field inside the phantom. The OpenSAR software computes the results to give a SAR value in a 1g or 10g mass.

4.2 Probe

For the measurements the Specific Dosimetric E-Field Probe SSE2 SN 45/15 EPGO280 with following specifications is used

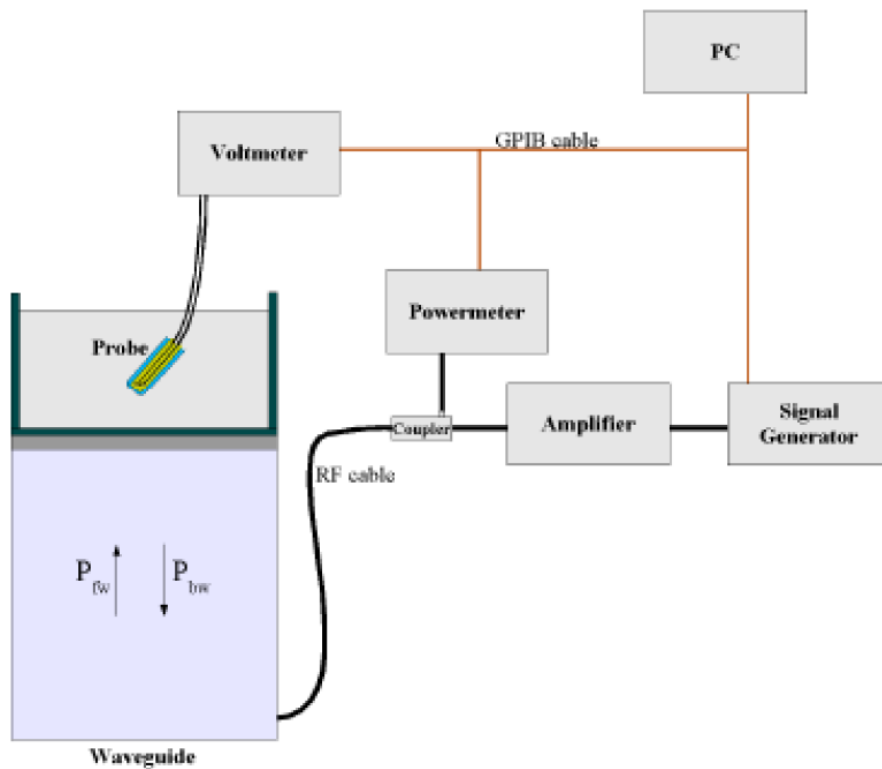
- Dynamic range: 0.01-100 W/kg
- Probe Length: 330 mm
- Length of Individual Dipoles: 4.5 mm
- Maximum external diameter: 8 mm
- Probe Tip External Diameter : 5 mm

Waltek Testing Group (Shenzhen) Co., Ltd.

[Http://www.waltek.com.cn](http://www.waltek.com.cn)

- Distance between dipoles / probe extremity: 2.7mm
- Probe linearity: <0.25 dB
- Axial Isotropy: <0.25 dB
- Spherical Isotropy: <0.50 dB
- Calibration range: 700 to 3000MHz for head & body simulating liquid.
- Angle between probe axis (evaluation axis) and surface normal line: less than 30°

Probe calibration is realized, in compliance with EN 62209-1 and IEEE 1528 STD, with CALISAR, Antenna proprietary calibration system. The calibration is performed with the EN 62209-1 annexe technique using reference guide at the five frequencies.



$$SAR = \frac{4(P_{fw} - P_{bw})}{ab\delta} \cos^2\left(\pi \frac{y}{a}\right) e^{-2z/\delta}$$

Where :

P_{fw} = Forward Power

P_{bw} = Backward Power

a and b = Waveguide dimensions

δ = Skin depth

Keithley configuration:

Rate = Medium; Filter = ON; RDGS = 10; Filter type = Moving Average; Range auto after each calibration, a SAR measurement is performed on a validation dipole and compared with a NPL calibrated probe, to verify it.

Waltek Testing Group (Shenzhen) Co., Ltd.

The calibration factors, CF(N), for the 3 sensors corresponding to dipole 1, dipole 2 and dipole 3 are:

$$CF(N)=SAR(N)/Vlin(N) \quad (N=1,2,3)$$

The linearised output voltage Vlin(N) is obtained from the displayed output voltage V(N) using

$$Vlin(N)=V(N)*(1+V(N)/DCP(N)) \quad (N=1,2,3)$$

where DCP is the diode compression point in mV.

4.3 Probe Calibration Process

Dosimetric Assessment Procedure

Each E-Probe/Probe Amplifier combination has unique calibration parameters. SATIMO Probe calibration procedure is conducted to determine the proper amplifier settings to enter in the probe parameters. The amplifier settings are determined for a given frequency by subjecting the probe to a known E-field density (1 mW/cm²) using an with CALISAR, Antenna proprietary calibration system.

Free Space Assessment Procedure

The free space E-field from amplified probe outputs is determined in a test chamber. This calibration can be performed in a TEM cell if the frequency is below 1 GHz and in a waveguide or other methodologies above 1 GHz for free space. For the free space calibration, the probe is placed in the volumetric center of the cavity and at the proper orientation with the field. The probe is rotated 360 degrees until the three channels show the maximum reading. The power density readings equates to 1mW/cm².

Temperature Assessment Procedure

E-field temperature correlation calibration is performed in a flat phantom filled with the appropriate simulated head tissue. The E-field in the medium correlates with the temperature rise in the dielectric medium. For temperature correlation calibration a RF transparent thermistor-based temperature probe is used in conjunction with the E-field probe.

Where:

$$SAR = C \frac{\Delta T}{\Delta t}$$

Δt = exposure time (30 seconds),

C = heat capacity of tissue (brain or muscle),

ΔT = temperature increase due to RF exposure.

SAR is proportional to $\Delta T / \Delta t$, the initial rate of tissue heating, before thermal diffusion takes place. The electric field in the simulated tissue can be used to estimate SAR by equating the thermally derived SAR to that with the E- field component.

$$SAR = \frac{|E|^2 \cdot \sigma}{\rho}$$

Where:

σ = simulated tissue conductivity,

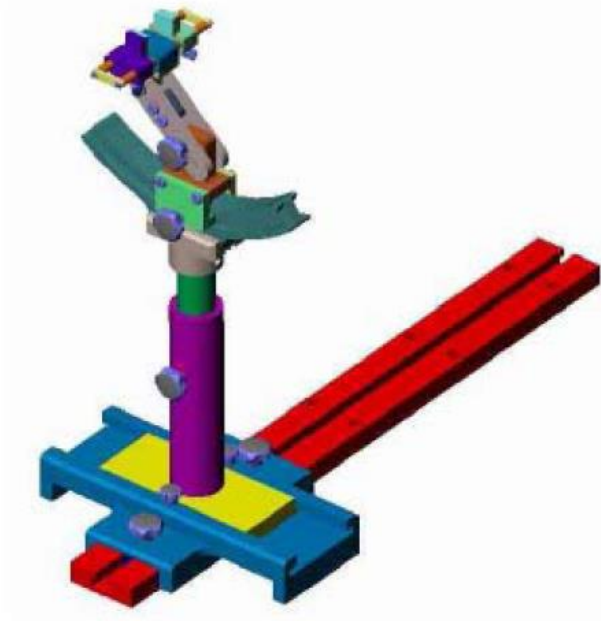
ρ = Tissue density (1.25 g/cm³ for brain tissue)

4.4 Phantom

For the measurements the Specific Anthropomorphic Mannequin (SAM) defined by the IEEE SCC-34/SC2 group is used. The phantom is a polyurethane shell integrated in a wooden table. The thickness of the phantom amounts to 2mm +/- 0.2mm. It enables the dosimetric evaluation of left and right phone usage and includes an additional flat phantom part for the simplified performance check. The phantom set-up includes a cover, which prevents the evaporation of the liquid.

4.5 Device Holder

The positioning system allows obtaining cheek and tilting position with a very good accuracy. In compliance with CENELEC, the tilt angle uncertainty is lower than 1 °.



System Material	Permittivity	Loss Tangent
Delrin	3.7	0.005

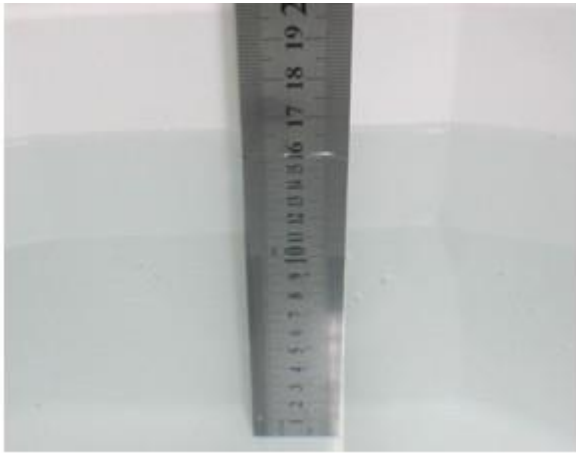
4.6 Test Equipment List

Description	Manufacturer	Model	Serial Number	Cal. Date	Due. Date
E-Field Probe	MVG	SSE2	SN 18/21 EPGO356	2021-07-16	2022-07-15
835MHz Dipole	MVG	SID835	SN 47/12 DIP 0G835-204	2020-03-11	2023-03-10
900MHz Dipole	MVG	SID900	SN 47/12 DIP 0G900-205	2020-03-11	2023-03-10
1800MHz Dipole	MVG	SID1800	SN 47/12 DIP 1G800-206	2020-03-11	2023-03-10
1900MHz Dipole	MVG	SID1900	SN 47/12 DIP 1G900-207	2020-03-11	2023-03-10
2000MHz Dipole	MVG	SID2000	SN 47/12 DIP 2G000-208	2020-03-11	2023-03-10
2450MHz Dipole	MVG	SID2450	SN 13/15 DIP 2G450-364	2020-03-11	2023-03-10
2600MHz Dipole	MVG	SID2600	SN 28/21 DIP 2G600-590	2021-07-16	2024-07-15
5 GHz Dipole	MVG	SWG5500	SN 49/16 WGA45	2020-07-03	2023-07-02
Dielectric Probe	SATIMO	SCLMP	SN 47/12 OCPG49	2022-03-22	2023-03-21
SAM Phantom	SATIMO	SAM	SN/ 47/12 SAM95	N/A	N/A
Multi Meter	Keithley	Keithley 2000	4006367	2022-03-22	2023-03-21
Power meter	Keithley	3500	JC-2017-09-001	2022-03-22	2023-03-21
Power meter	Keithley	3500	JC-2017-09-001	2022-03-22	2023-03-21
Power Sensor	HP	11636B	JC-2017-10-002	2022-03-22	2023-03-21
MXG X-Series RF Vector Signal Generato	KEYSIGHT	N5182B	MY57300664	2022-03-22	2023-03-21
Universal Tester	Rohde & Schwarz	CMU200	112315	2022-03-22	2023-03-21
Universal Radio Communication Tester	Rohde & Schwarz	CMW500	148650	2022-03-22	2023-03-21
Network Analyzer	HP	8753C	2901A00831	2022-03-22	2023-03-21

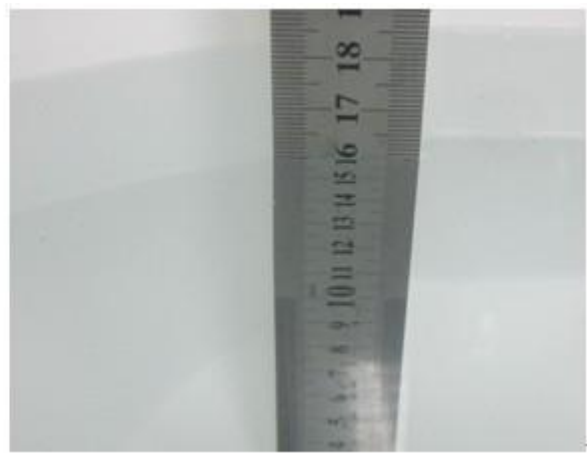
5. Tissue Simulating Liquids

5.1 Composition of Tissue Simulating Liquid

For the measurement of the field distribution inside the SAM phantom with SMTIMO, the phantom must be filled with around 25 liters of homogeneous body tissue simulating liquid. For head SAR testing, the liquid height from the ear reference point (ERP) of the phantom to the liquid top surface is larger than 15 cm. For body SAR testing, the liquid height from the center of the flat phantom to the liquid top surface is larger than 15 cm. Please see the following photos for the liquid height.



Liquid Height for Head SAR



Liquid Height for Body SAR

The Composition of Tissue Simulating Liquid

Frequency (MHz)	Water (%)	Salt (%)	Sugar (%)	HEC (%)	Preventol (%)	DGBE (%)
Head						
2450	55.0	0.1	0	0	0	44.9

Frequency (MHz)	Water (%)	Hexyl Carbitol (%)	Triton X-100 (%)
Head			
5000-6000	65.52	17.24	17.24

5.2 Tissue Dielectric Parameters for Head and Body Phantoms

The head tissue dielectric parameters recommended by the IEEE SCC-34/SC-2 in P1528 have been incorporated in the following table. These head parameters are derived from planar layer models simulating the highest expected SAR for the dielectric properties and tissue thickness variations in a human head. Other head and body tissue parameters that have not been specified in P1528 are derived from the tissue dielectric parameters computed from the 4-Cole-Cole equations described in Reference [12] and extrapolated according to the head parameters specified in P1528.

Target Frequency (MHz)	Head		Body	
	Conductivity (σ)	Permittivity (ϵ_r)	Conductivity (σ)	Permittivity (ϵ_r)
150	0.76	52.3	0.80	61.9
300	0.87	45.3	0.92	58.2
450	0.87	43.5	0.94	56.7
750	0.89	41.9	0.96	55.5
835	0.90	41.5	0.97	55.2
900	0.97	41.5	1.05	55.0
915	0.98	41.5	1.06	55.0
1450	1.20	40.5	1.30	54.0
1610	1.29	40.3	1.40	53.8
1800-2000	1.40	40.0	1.52	53.3
2300	1.67	39.5	1.81	52.9
2450	1.80	39.2	1.95	52.7
2600	1.96	39.0	2.16	52.5
3000	2.40	38.5	2.73	52.0
5200	4.66	36.0	5.30	49.0
5400	4.86	35.8	5.53	48.7
5600	5.07	35.5	5.77	48.5
5800	5.27	35.3	6.00	48.2

5.3 Tissue Calibration Result

The dielectric parameters of the liquids were verified prior to the SAR evaluation using COMOSAR Dielectric Probe Kit and an Agilent Network Analyzer.

Calibration Result for Dielectric Parameters of Tissue Simulating Liquid

Head Tissue Simulating Liquid									
Freq. MHz.	Temp. (°C)	Conductivity			Permittivity			Limit (%)	Date
		Reading (σ)	Target (σ)	Delta (%)	Reading (ϵ_r)	Target (ϵ_r)	Delta (%)		
2450	22.1	1.78	1.80	-1.11	39.45	39.2	0.64	±5	2022-05-17
5200	22.1	4.69	4.66	0.64	35.45	36.0	-1.53	±5	2022-05-17
5400	22.1	4.81	4.86	-1.03	36.52	35.8	2.01	±5	2022-05-17
5600	22.1	5.11	5.07	0.79	35.17	35.5	-0.93	±5	2022-05-17
5800	22.1	5.23	5.27	-0.76	34.62	35.3	-1.93	±5	2022-05-17

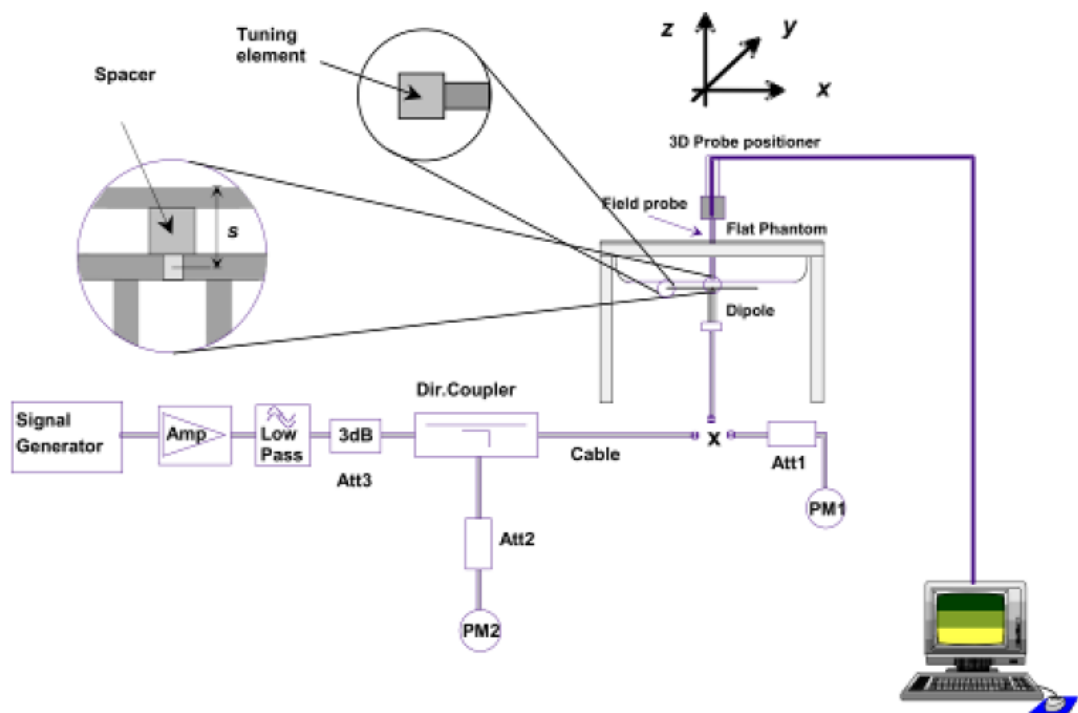
6. SAR Measurement Evaluation

6.1 Purpose of System Performance Check

The system performance check verifies that the system operates within its specifications. System and operator errors can be detected and corrected. It is recommended that the system performance check be performed prior to any usage of the system in order to guarantee reproducible results. The system performance check uses normal SAR measurements in a simplified setup with a well characterized source. This setup was selected to give a high sensitivity to all parameters that might fail or vary over time. The system check does not intend to replace the calibration of the components, but indicates situations where the system uncertainty is exceeded due to drift or failure.

6.2 System Setup

In the simplified setup for system evaluation, the EUT is replaced by a calibrated dipole and the power source is replaced by a continuous wave which comes from a signal generator at frequency 835MHz ,1800MHz, 1900MHz 2450MHz,2600MHz,and 5GHz. The calibrated dipole must be placed beneath the flat phantom section of the SAM twin phantom with the correct distance holder. The distance holder should touch the phantom surface with a light pressure at the reference marking and be oriented parallel to the long side of the phantom.



System Verification Setup Block Diagram



Setup Photo of Dipole Antenna

The output power on dipole port must be calibrated to 24 dBm(250 mW) before dipole is connected.
The output power on 5 GHz Waveguide must be calibrated to 20 dBm (100mW) before 5 GHz Waveguide is connected.

6.3 Validation Results

Comparing to the original SAR value provided by SATIMO, the validation data should be within its specification of 10 %. Table 6.1 shows the target SAR and measured SAR after normalized to 1W input power. The table below indicates the system performance check can meet the variation criterion.

Frequency	Liquid	Power (mw)	Targeted SAR _{1g}	Measured SAR _{1g}	Normalized SAR _{1g}	Tolerance	Date
2450	Head	250	53.76	13.56	54.24	0.89	2022-05-17

Frequency	Liquid	Power (mw)	Targeted SAR _{1g}	Measured SAR _{1g}	Normalized SAR _{1g}	Tolerance	Date
5200	Head	100	161.23	16.746	167.46	3.86	2022-05-17
5400	Head	100	165.58	17.481	174.81	5.57	2022-05-17
5600	Head	100	173.58	17.604	176.04	1.42	2022-05-17
5800	Head	100	179.32	17.961	179.61	0.16	2022-05-17

Remark: Referring to IEC/IEEE 62209-1528:2020, Section 8.2, The system check shall be performed at a test frequency that is within $\pm 10\%$ or ± 100 MHz of the compliance test mid-band frequency, so the 1750 MHz system verification is made of 1800MHz Dipole.

Targeted and Measurement SAR

Please refer to Annex A for the plots of system performance check.

7. EUT Testing Position

7.1 Define Two Imaginary Lines on The Handset

- (a) The vertical centerline passes through two points on the front side of the handset - the midpoint of the width w_t of the handset at the level of the acoustic output, and the midpoint of the width w_b of the bottom of the handset.
- (b) The horizontal line is perpendicular to the vertical centerline and passes through the center of the acoustic output. The horizontal line is also tangential to the face of the handset at point A.
- (c) The two lines intersect at point A. Note that for many handsets, point A coincides with the center of the acoustic output; however, the acoustic output may be located elsewhere on the horizontal line. Also note that the vertical centerline is not necessarily parallel to the front face of the handset, especially for clamshell handsets, handsets with flip covers, and other irregularly shaped handsets.

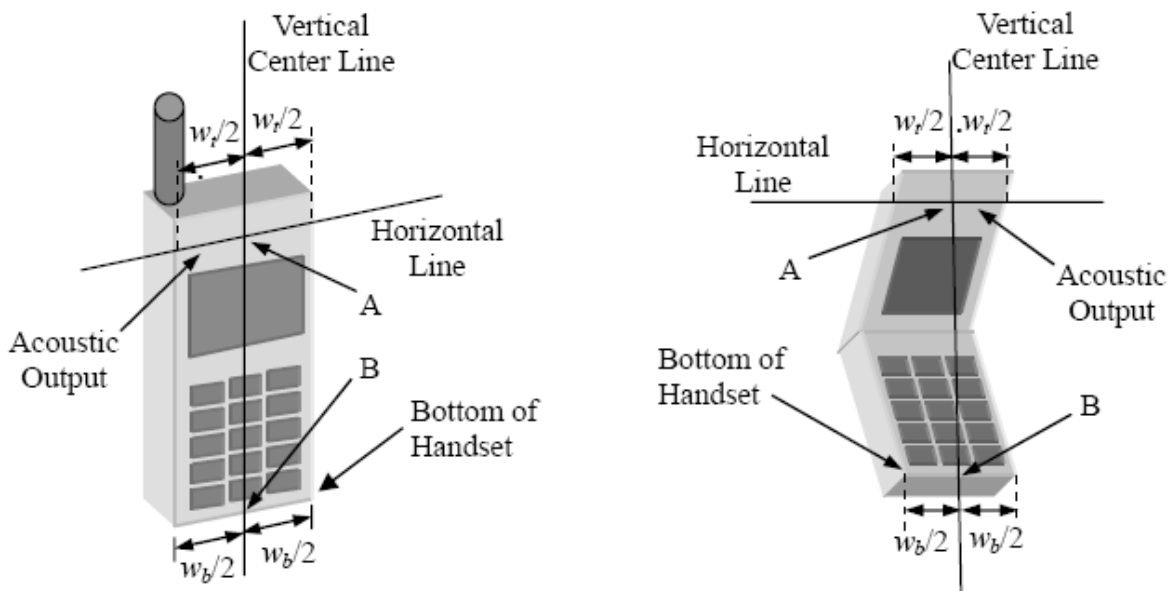


Illustration for Handset Vertical and Horizontal Reference Lines

7.2 Cheek Position

- (a) To position the device with the vertical center line of the body of the device and the horizontal line crossing the center piece in a plane parallel to the sagittal plane of the phantom. While maintaining the device in this plane, align the vertical center line with the reference plane containing the three ear and mouth reference point (M: Mouth, RE: Right Ear, and LE: Left Ear) and align the center of the ear piece with the line RE-LE.
- (b) To move the device towards the phantom with the ear piece aligned with the line LE-RE until the phone touched the ear. While maintaining the device in the reference plane and maintaining the phone contact with the ear, move the bottom of the phone until any point on the front side is in contact with the cheek of the phantom or until contact with the ear is lost (see Fig. 7.2).

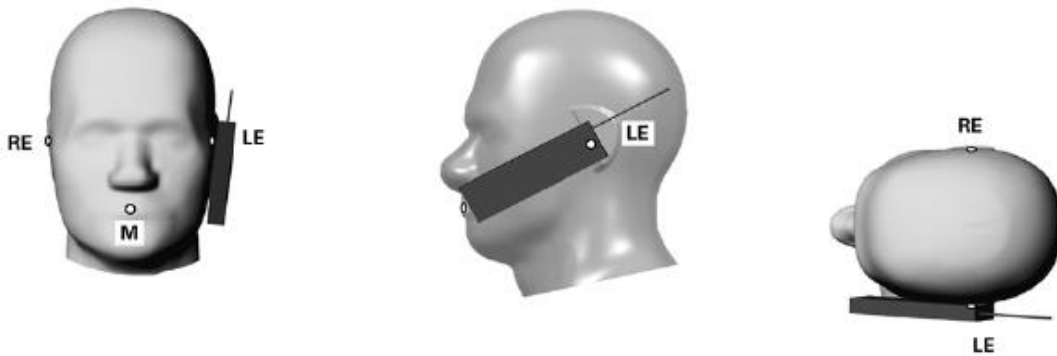


Illustration for Cheek Position

7.3 Tilted Position

- (a) To position the device in the “cheek” position described above.
- (b) While maintaining the device the reference plane described above and pivoting against the ear, moves it outward away from the mouth by an angle of 15 degrees or until contact with the ear is lost (see Fig. 7.3).

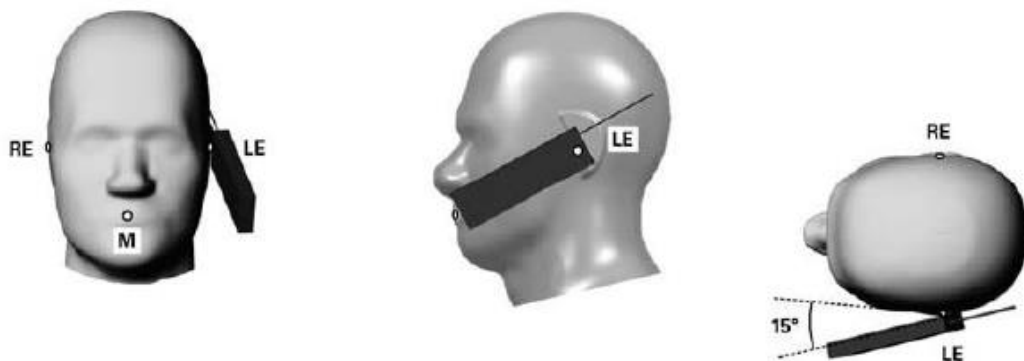


Illustration for Tilted Position

7.4 Body Position

- (a) To position the device parallel to the phantom surface with each side.
- (b) To adjust the device parallel to the flat phantom.
- (c) To adjust the distance between the device surface and the flat phantom to 10mm.

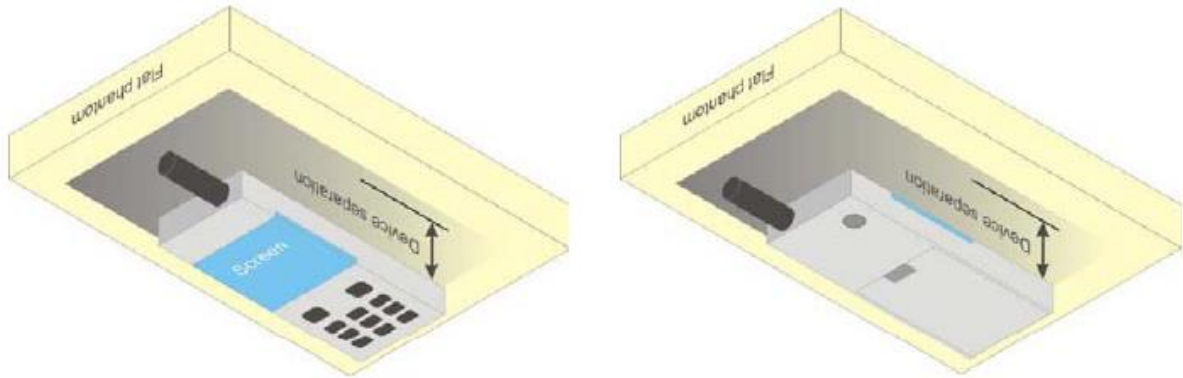
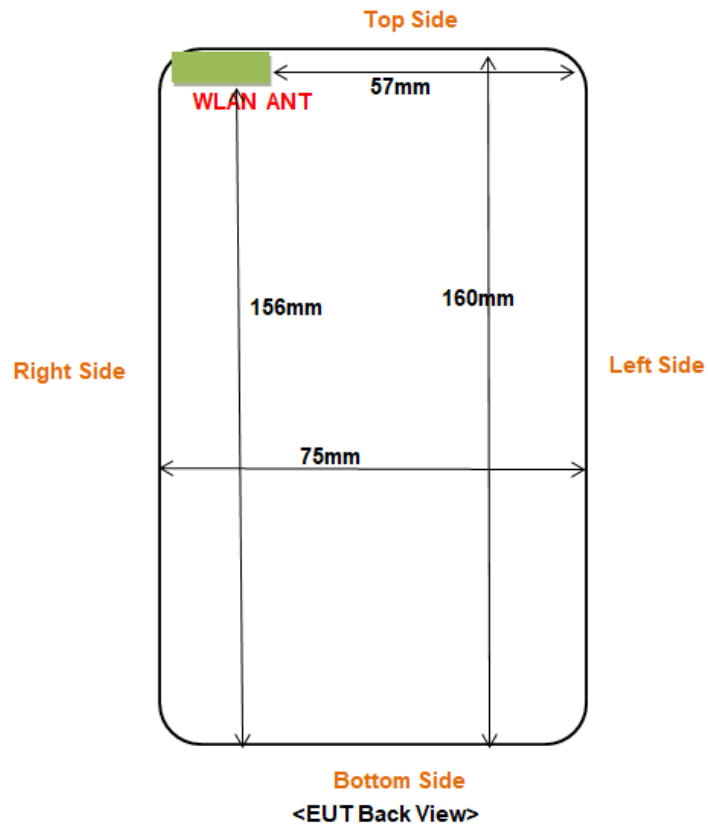


Illustration for Body Position

7.5 EUT Antenna Position



Block Diagram for EUT Antenna Position

Distance of EUT antenna-to-edge/surface(mm), Test distance:10mm						
Antennas	Back side	Front side	Left Edge	Right Edge	Top Edge	Bottom Edge
U-NIII	<25	<25	57	<25	<25	156
WLAN(2.4GHz)	<25	<25	57	<25	<25	156

7.6 EUT Testing Position

Head/Body mode SAR assessments are required for this device. This EUT was tested in different positions for different SAR test modes, more information as below:

Head SAR tests				
Antennas	Right Cheek	Left Cheek	Right Tilted	Left Tilted
U-NIII	Yes	Yes	Yes	Yes
WLAN(2.4GHz)	Yes	Yes	Yes	Yes

Body-worn SAR tests, Test distance: 10mm		
Antennas	Front	Back
U-NIII	Yes	Yes
WLAN(2.4GHz)	Yes	Yes

Hotspot SAR tests, Test distance: 10mm						
Antennas	Front	Back	Left Side	Right Side	Top Side	Bottom Side
U-NIII	Yes	Yes	No	Yes	Yes	No
WLAN(2.4GHz)	Yes	Yes	No	Yes	Yes	No

Remark:

- Referring to KDB 941225 D06, when the overall device length and width are $\geq 9\text{cm} \times 5\text{cm}$, the test separation distances is 10 mm. SAR must be measured for all sides and surfaces with a transmitting antenna located within 25mm from that surface or edge.
- Referring to KDB 648474 D04 Handset SAR v01r03, 10-g extremity SAR is required only for the surfaces and edges with hotspot mode 1-g reported SAR $> 1.2 \text{ W/kg}$

Please refer to Annex D for the EUT test setup photos.

8. SAR Measurement Procedures

8.1 Measurement Procedures

The measurement procedures are as follows:

- (a) Use base station simulator (if applicable) or engineering software to transmit RF power continuously (continuous Tx) in the highest power channel.
- (b) Keep EUT to radiate maximum output power or 100% factor (if applicable)
- (c) Measure output power through RF cable and power meter.
- (d) Place the EUT in the positions as Annex D demonstrates.
- (e) Set scan area, grid size and other setting on the SATIMO software.
- (f) Measure SAR results for the highest power channel on each testing position.
- (g) Find out the largest SAR result on these testing positions of each band
- (h) Measure SAR results for other channels in worst SAR testing position if the SAR of highest power channel is larger than 0.8 W/kg

According to the test standard, the recommended procedure for assessing the peak spatial-average SAR value consists of the following steps:

- (a) Power reference measurement
- (b) Area scan
- (c) Zoom scan
- (d) Power drift measurement

8.2 Spatial Peak SAR Evaluation

The procedure for spatial peak SAR evaluation has been implemented according to the test standard. It can be conducted for 1g and 10g, as well as for user-specific masses. The SATIMO software includes all numerical procedures necessary to evaluate the spatial peak SAR value.

The base for the evaluation is a "cube" measurement. The measured volume must include the 1g and 10g cubes with the highest averaged SAR values. For that purpose, the center of the measured volume is aligned to the interpolated peak SAR value of a previously performed area scan.

The entire evaluation of the spatial peak values is performed within the post-processing engine. The system always gives the maximum values for the 1g and 10g cubes. The algorithm to find the cube with highest averaged SAR is divided into the following stages:

- (a) Extraction of the measured data (grid and values) from the Zoom Scan
- (b) Calculation of the SAR value at every measurement point based on all stored data
- (c) Generation of a high-resolution mesh within the measured volume
- (d) Interpolation of all measured values from the measurement grid to the high-resolution grid
- (e) Extrapolation of the entire 3D field distribution to the phantom surface over the distance from sensor to surface
- (f) Calculation of the averaged SAR within masses of 1g and 10g

8.3 Area & Zoom Scan Procedures

First Area Scan is used to locate the approximate location(s) of the local peak SAR value(s). The measurement grid within an Area Scan is defined by the grid extent, grid step size and grid offset. Next, in order to determine the EM field distribution in a three-dimensional spatial extension, Zoom Scan is required. The Zoom Scan measures 5x5x7 points with step size 8, 8 and 5 mm for 300 MHz to 3 GHz, and 8x8x8 points with step size 4, 4 and 2.5 mm for 3 GHz to 6 GHz. The Zoom Scan is performed around the highest E-field value to determine the averaged SAR-distribution over 10 g.

8.4 Volume Scan Procedures

The volume scan is used for assess overlapping SAR distributions for antennas transmitting in different frequency bands. It is equivalent to an oversized zoom scan used in standalone measurements. The measurement volume will be used to enclose all the simultaneous transmitting antennas. For antennas transmitting simultaneously in different frequency bands, the volume scan is measured separately in each frequency band. In order to sum correctly to compute the 1g aggregate SAR, the EUT remain in the same test position for all measurements and all volume scan use the same spatial resolution and grid spacing (step-size is 4, 4 and 2.5 mm). When all volume scan were completed, the software can combine and subsequently superpose these measurement data to calculating the multiband SAR.

8.5 SAR Averaged Methods

The local SAR inside the phantom is measured using small dipole sensing elements inside a probe body. The probe tip must not be in contact with the phantom surface in order to minimize measurements errors, but the highest local SAR will occur at the surface of the phantom.

An extrapolation is using to determinate this highest local SAR values. The extrapolation is based on a fourth-order least-square polynomial fit of measured data. The local SAR value is then extrapolated from the liquid surface with a 1mm step.

The measurements have to be performed over a limited time (due to the duration of the battery) so the step of measurement is high. It could vary between 5 and 8 mm. To obtain an accurate assessment of the maximum SAR averaged over 10g and 1 g requires a very fine resolution in the three dimensional scanned data array.

8.6 Power Drift Monitoring

All SAR testing is under the EUT install full charged battery and transmit maximum output power. In SATIMO measurement software, the power reference measurement and power drift measurement procedures are used for monitoring the power drift of EUT during SAR test. Both these procedures measure the field at a specified reference position before and after the SAR testing. The software will calculate the field difference in dB. If the power drift more than 5%, the SAR will be retested.

9. SAR Test Result

9.1 Conducted RF Output Power

WLAN(2.4GHz) – Conducted Power					
Test Mode	Data Rate	Channel	Frequency (MHz)	Average Power (dBm)	Tune-up power (dBm)
802.11b	1Mbps	CH 01	2412	14.07	14.5
		CH 06	2437	14.54	15.0
		CH 11	2462	14.49	14.5
802.11g	54Mbps	CH 01	2412	13.32	13.5
		CH 06	2437	13.76	14.0
		CH 11	2462	13.80	14.0
802.11n (20MHz)	MCS7	CH 01	2412	13.21	13.5
		CH 06	2437	13.82	14.0
		CH 11	2462	13.99	14.0
802.11n (40MHz)	MCS7	CH 03	2422	12.78	13.0
		CH 06	2437	13.17	13.5
		CH 09	2452	13.32	13.5

U-NIII-1 – Conducted Power				
Test Mode	Channel	Frequency (MHz)	Average Power (dBm)	Tune-up power (dBm)
802.11a	CH 36	5180	12.30	12.5
	CH 40	5200	12.54	13.0
	CH 48	5240	12.36	12.5
802.11n (HT20)	CH 36	5180	11.68	12.0
	CH 40	5200	12.15	12.5
	CH 48	5240	11.71	12.0
802.11n (HT40)	CH 38	5190	12.12	12.5
	CH 46	5230	11.98	12.0
802.11ac (20MHz)	CH 36	5180	11.81	12.0
	CH 40	5200	12.06	12.5
	CH 48	5240	11.67	12.0
802.11ac (40MHz)	CH 38	5190	12.10	12.5
	CH 46	5230	11.98	12.0
802.11ac (80MHz)	CH 42	5210	12.12	12.5

U-NIII-2A- Conducted Power				
Test Mode	Channel	Frequency (MHz)	Average Power (dBm)	Tune-up power (dBm)
802.11a	CH 52	5260	12.36	12.5
	CH 56	5280	11.73	12.0
	CH 64	5320	11.29	11.5
802.11n (20MHz)	CH 52	5260	11.73	12.0
	CH 56	5280	11.23	11.5
	CH 64	5320	10.67	11.0
802.11n (40MHz)	CH 54	5270	11.49	11.5
	CH 62	5310	11.03	11.5
802.11ac (20MHz)	CH 52	5260	11.69	12.0
	CH 56	5280	11.18	11.5
	CH 64	5320	10.68	11.0
802.11ac (40MHz)	CH 54	5270	11.51	12.0
	CH 62	5310	11.08	11.5
802.11ac (80MHz)	CH 58	5290	11.44	11.5

U-NIII-2C- Conducted Power				
Test Mode	Channel	Frequency (MHz)	Average Power (dBm)	Tune-up power (dBm)
802.11a	CH 100	5500	11.87	12.0
	CH 116	5580	12.39	12.5
	CH 140	5700	11.90	12.0
802.11n (20MHz)	CH 100	5500	11.35	11.5
	CH116	5580	11.73	12.0
	CH 140	5700	11.41	11.5
802.11n (40MHz)	CH 102	5510	11.60	12.0
	CH 110	5550	11.68	12.0
	CH 134	5670	11.68	12.0
802.11ac (20MHz)	CH 100	5500	11.34	11.5
	CH 116	5580	11.68	12.0
	CH 140	5700	11.38	11.5
802.11ac (40MHz)	CH 102	5510	11.57	12.0
	CH 110	5550	11.65	12.0
	CH 134	5670	11.65	12.0
802.11ac (80MHz)	CH 106	5530	11.93	12.0
	CH 122	5610	11.98	12.0

U-NIII-3– Conducted Power				
Test Mode	Channel	Frequency (MHz)	Average Power (dBm)	Tune-up power (dBm)
802.11a	CH 149	5745	12.38	12.5
	CH 157	5785	11.39	11.5
	CH 165	5825	12.65	13.0
802.11n (20MHz)	CH 149	5745	11.27	11.5
	CH 157	5785	10.95	11.0
	CH 165	5825	12.04	12.5
802.11n (40MHz)	CH 151	5755	11.49	11.5
	CH 159	5795	11.22	11.5
802.11ac (20MHz)	CH 149	5745	11.34	11.5
	CH 157	5785	10.87	11.0
	CH 165	5825	12.07	12.5
802.11ac (40MHz)	CH 151	5755	11.43	11.5
	CH 159	5795	11.27	11.5
802.11ac (80MHz)	CH 155	5775	11.58	12.0

Remark:

1. Per KDB 248227 D01 v02r02, When multiple channel bandwidth configurations in a frequency band have the same specified maximum output power, the initial test configuration is determined by applying the following steps sequentially.
 - 1) The largest channel bandwidth configuration is selected among the multiple configurations in a frequency band with the same specified maximum output power.
 - 2) If multiple configurations have the same specified maximum output power and largest channel bandwidth, the lowest order modulation among the largest channel bandwidth configurations is selected.
 - 3) If multiple configurations have the same specified maximum output power, largest channel bandwidth and lowest order modulation, the lowest data rate configuration among these configurations is selected.
 - 4) When multiple transmission modes (802.11a/g/n/ac) have the same specified maximum output power, largest channel bandwidth, lowest order modulation and lowest data rate, the lowest order 802.11 mode is selected; i.e., 802.11a is chosen over 802.11n then 802.11ac or 802.11g is chosen over 802.11n.

9.2 Test Results for Standalone SAR Test

Head SAR

WLAN 2.4GHz – Head SAR Test									
Plot No.	Mode	Test Position Head	Frequency		Output Power (dBm)	Rated Limit (dBm)	Scaling Factor	SAR1g (W/kg)	Scaled SAR1g (W/kg)
			CH.	MHz					
	802.11b	Right Cheek	06	2437	14.54	15.0	1.112	0.330	0.367
	802.11b	Right Tilted	06	2437	14.54	15.0	1.112	0.161	0.179
1.	802.11b	Left Cheek	06	2437	14.54	15.0	1.112	0.600	0.667
	802.11b	Left Tilted	06	2437	14.54	15.0	1.112	0.305	0.339

U-NIII-1– Head SAR Test									
Plot No.	Mode	Test Position Head	Frequency		Output Power (dBm)	Rated Limit (dBm)	Scaling Factor	SAR1g (W/kg)	Scaled SAR1g (W/kg)
			CH.	MHz					
	802.11a	Right Cheek	40	5200	12.54	13.0	1.112	0.371	0.412
	802.11a	Right Tilted	40	5200	12.54	13.0	1.112	0.174	0.193
2.	802.11a	Left Cheek	40	5200	12.54	13.0	1.112	0.548	0.609
	802.11a	Left Tilted	40	5200	12.54	13.0	1.112	0.261	0.290

U-NIII-2A– Head SAR Test									
Plot No.	Mode	Test Position Head	Frequency		Output Power (dBm)	Rated Limit (dBm)	Scaling Factor	SAR1g (W/kg)	Scaled SAR1g (W/kg)
			CH.	MHz					
	802.11a	Right Cheek	52	5260	12.36	12.5	1.033	0.260	0.269
	802.11a	Right Tilted	52	5260	12.36	12.5	1.033	0.136	0.140
3.	802.11a	Left Cheek	52	5260	12.36	12.5	1.033	0.750	0.775
	802.11a	Left Tilted	52	5260	12.36	12.5	1.033	0.361	0.373

U-NIII-2C– Head SAR Test									
Plot No.	Mode	Test Position Head	Frequency		Output Power (dBm)	Rated Limit (dBm)	Scaling Factor	SAR1g (W/kg)	Scaled SAR1g (W/kg)
			CH.	MHz					
	802.11a	Right Cheek	116	5580	12.39	12.5	1.026	0.336	0.345
	802.11a	Right Tilted	116	5580	12.39	12.5	1.026	0.167	0.171
4.	802.11a	Left Cheek	116	5580	12.39	12.5	1.026	0.693	0.711
	802.11a	Left Tilted	116	5580	12.39	12.5	1.026	0.339	0.348

U-NIII-3– Head SAR Test									
Plot No.	Mode	Test Position Head	Frequency		Output Power (dBm)	Rated Limit (dBm)	Scaling Factor	SAR1g (W/kg)	Scaled SAR1g (W/kg)
			CH.	MHz					
	802.11a	Right Cheek	165	5825	12.65	13.0	1.084	0.476	0.516
	802.11a	Right Tilted	165	5825	12.65	13.0	1.084	0.242	0.262
5.	802.11a	Left Cheek	165	5825	12.65	13.0	1.084	0.722	0.783
	802.11a	Left Tilted	165	5825	12.65	13.0	1.084	0.361	0.391

Remark: Per KDB 447498 D01 v06, if the highest output channel SAR for each exposure position ≤ 0.8 W/kg other channels SAR tests are not necessary.

Body-worn SAR

WLAN 2.4GHz –Body SAR Test (Gap: 10mm)									
Plot No.	Mode	Test Position Body	Frequency		Output Power (dBm)	Rated Limit (dBm)	Scaling Factor	SAR1g (W/kg)	Scaled SAR1g (W/kg)
			CH.	MHz					
6	802.11b	Back Side	06	2437	14.54	15.0	1.112	0.272	0.302
	802.11b	Front Side	06	2437	14.54	15.0	1.112	0.258	0.287

U-NIII-1–Body SAR Test (Gap: 10mm)									
Plot No.	Mode	Test Position Body	Frequency		Output Power (dBm)	Rated Limit (dBm)	Scaling Factor	SAR1g (W/kg)	Scaled SAR1g (W/kg)
			CH.	MHz					
7	802.11a	Back Side	40	5200	12.54	13.0	1.112	0.331	0.368
	802.11a	Front Side	40	5200	12.54	13.0	1.112	0.308	0.342

U-NIII-2A–Body SAR Test (Gap: 10mm)									
Plot No.	Mode	Test Position Body	Frequency		Output Power (dBm)	Rated Limit (dBm)	Scaling Factor	SAR1g (W/kg)	Scaled SAR1g (W/kg)
			CH.	MHz					
8	802.11a	Back Side	52	5260	12.36	12.5	1.033	0.330	0.341
	802.11a	Front Side	52	5260	12.36	12.5	1.033	0.291	0.301

U-NIII-2C–Body SAR Test (Gap: 10mm)									
Plot No.	Mode	Test Position Body	Frequency		Output Power (dBm)	Rated Limit (dBm)	Scaling Factor	SAR1g (W/kg)	Scaled SAR1g (W/kg)
			CH.	MHz					
9	802.11a	Back Side	116	5580	12.39	12.5	1.026	0.395	0.405
	802.11a	Front Side	116	5580	12.39	12.5	1.026	0.286	0.293

U-NIII-3–Body SAR Test (Gap: 10mm)									
Plot No.	Mode	Test Position Body	Frequency		Output Power (dBm)	Rated Limit (dBm)	Scaling Factor	SAR1g (W/kg)	Scaled SAR1g (W/kg)
			CH.	MHz					
10	802.11a	Back Side	165	5825	12.65	13.0	1.084	0.317	0.344
	802.11a	Front Side	165	5825	12.65	13.0	1.084	0.279	0.302

Hotspot SAR

WLAN 2.4GHz –Body SAR Test (Gap: 10mm)									
Plot No.	Mode	Test Position Body	Frequency		Output Power (dBm)	Rated Limit (dBm)	Scaling Factor	SAR1g (W/kg)	Scaled SAR1g (W/kg)
			CH.	MHz					
11	802.11b	Back Face	06	2437	14.54	15.0	1.112	0.272	0.302
	802.11b	Front Face	06	2437	14.54	15.0	1.112	0.258	0.287
	802.11b	Right Side	06	2437	14.54	15.0	1.112	0.268	0.298
	802.11b	Top Side	06	2437	14.54	15.0	1.112	0.162	0.180

U-NIII-1 –Body SAR Test (Gap: 10mm)									
Plot No.	Mode	Test Position Body	Frequency		Output Power (dBm)	Rated Limit (dBm)	Scaling Factor	SAR1g (W/kg)	Scaled SAR1g (W/kg)
			CH.	MHz					
12	802.11a	Back Face	40	5200	12.54	13.0	1.112	0.331	0.368
	802.11a	Front Face	40	5200	12.54	13.0	1.112	0.308	0.342
	802.11a	Right Side	40	5200	12.54	13.0	1.112	0.199	0.221
	802.11a	Top Side	40	5200	12.54	13.0	1.112	0.308	0.342

U-NIII-2A –Body SAR Test (Gap: 10mm)									
Plot No.	Mode	Test Position Body	Frequency		Output Power (dBm)	Rated Limit (dBm)	Scaling Factor	SAR1g (W/kg)	Scaled SAR1g (W/kg)
			CH.	MHz					
13	802.11a	Back Face	52	5260	12.36	12.5	1.033	0.330	0.341
	802.11a	Front Face	52	5260	12.36	12.5	1.033	0.291	0.301
	802.11a	Right Side	52	5260	12.36	12.5	1.033	0.225	0.232
	802.11a	Top Side	52	5260	12.36	12.5	1.033	0.231	0.239

U-NIII-2C –Body SAR Test (Gap: 10mm)									
Plot No.	Mode	Test Position Body	Frequency		Output Power (dBm)	Rated Limit (dBm)	Scaling Factor	SAR1g (W/kg)	Scaled SAR1g (W/kg)
			CH.	MHz					
14	802.11a	Back Face	116	5580	12.39	12.5	1.026	0.395	0.405
	802.11a	Front Face	116	5580	12.39	12.5	1.026	0.286	0.293
	802.11a	Right Side	116	5580	12.39	12.5	1.026	0.382	0.392
	802.11a	Top Side	116	5580	12.39	12.5	1.026	0.388	0.398

U-NIII-3-Body SAR Test (Gap: 10mm)									
Plot No.	Mode	Test Position Body	Frequency		Output Power (dBm)	Rated Limit (dBm)	Scaling Factor	SAR1g (W/kg)	Scaled SAR1g (W/kg)
			CH.	MHz					
15	802.11a	Back Face	165	5825	12.65	13.0	1.084	0.317	0.344
	802.11a	Front Face	165	5825	12.65	13.0	1.084	0.279	0.302
	802.11a	Right Side	165	5825	12.65	13.0	1.084	0.237	0.257
	802.11a	Top Side	165	5825	12.65	13.0	1.084	0.310	0.336

Remark: Per KDB 447498 D01 v06, if the highest output channel SAR for each exposure position ≤ 0.8 W/kg other channels SAR tests are not necessary.

10. Measurement Uncertainty

10.1 Uncertainty for SAR Test

a	b	c	d	e= f(d,k)	f	g	h= c*f/e	i= c*g/e	k
Uncertainty Component	Sec.	Tol (+- %)	Prob. Dist.	Div.	Ci (1g)	Ci (10g)	1g Ui (+-%)	10g Ui (+-%)	Vi
Measurement System									
Probe calibration	E.2.1	7.0	N	1	1	1	7.00	7.00	∞
Axial Isotropy	E.2.2	2.5	R	$\sqrt{3}$	$(1_{Cp})^{1/2}$	$(1_{Cp})^{1/2}$	1.02	1.02	∞
Hemispherical Isotropy	E.2.2	4.0	R	$\sqrt{3}$	$(Cp)^{1/2}$	$(Cp)^{1/2}$	1.63	1.63	∞
Boundary effect	E.2.3	1.0	R	$\sqrt{3}$	1	1	0.58	0.58	∞
Linearity	E.2.4	5.0	R	$\sqrt{3}$	1	1	2.89	2.89	∞
System detection limits	E.2.5	1.0	R	$\sqrt{3}$	1	1	0.58	0.58	∞
Readout Electronics	E.2.6	0.02	N	1	1	1	0.02	0.02	∞
Reponse Time	E.2.7	3.0	R	$\sqrt{3}$	1	1	1.73	1.73	∞
Integration Time	E.2.8	2.0	R	$\sqrt{3}$	1	1	1.15	1.15	∞
RF ambient Conditions – Noise	E.6.1	0	R	$\sqrt{3}$	1	1	1.73	1.73	∞
RF ambient Conditions - Reflections	E.6.1	0	R	$\sqrt{3}$	1	1	1.73	1.73	∞
Probe positioner Mechanical Tolerance	E.6.2	2.0	R	$\sqrt{3}$	1	1	1.15	1.15	∞
Probe positioning with respect to Phantom Shell	E.6.3	0.05	R	$\sqrt{3}$	1	1	0.03	0.03	∞
Extrapolation, interpolation and integration Algorithms for Max. SAR Evaluation	E.5	5.0	R	$\sqrt{3}$	1	1	2.89	2.89	∞
Test Sample Related									
Test sample positioning	E.4.2	0.03	N	1	1	1	0.03	0.03	N-1
Device Holder Uncertainty	E.4.1	5.00	N	1	1	1	5.00	5.00	
Output power Variation - SAR drift measurement	E.2.9	12.02	R	$\sqrt{3}$	1	1	6.94	6.94	∞
SAR scaling	E6.5	0.0	R	$\sqrt{3}$	1	1	0.0	0.0	∞
Phantom and Tissue Parameters									
Phantom Uncertainty (Shape and thickness tolerances)	E.3.1	0.05	R	$\sqrt{3}$	1	1	0.03	0.03	∞
Uncertainty in SAR correction for deviations in permittivity and conductivity	E3.2	1.9	R	$\sqrt{3}$	1	0.84	1.10	0.90	∞

Liquid conductivity - deviation from target value	E.3.2	5.00	R	$\sqrt{3}$	0.64	0.43	1.85	1.24	∞
Liquid conductivity - measurement uncertainty	E.3.3	5.00	N	1	0.64	0.43	3.20	2.15	∞
Liquid permittivity - deviation from target value	E.3.2	0.37	R	$\sqrt{3}$	0.6	0.49	0.13	0.10	∞
Liquid permittivity - measurement uncertainty	E.3.3	10.00	N	1	0.6	0.49	6.00	4.90	∞
Combined Standard Uncertainty			RSS				10.20	10.00	
Expanded Uncertainty (95% Confidence interval)			K=2				20.40	20.00	

Annex A. Plots of System Performance Check

MEASUREMENT 1

Type: Validation measurement (Fast, 75.00 %)

Measurement duration: 12 minutes 21 seconds

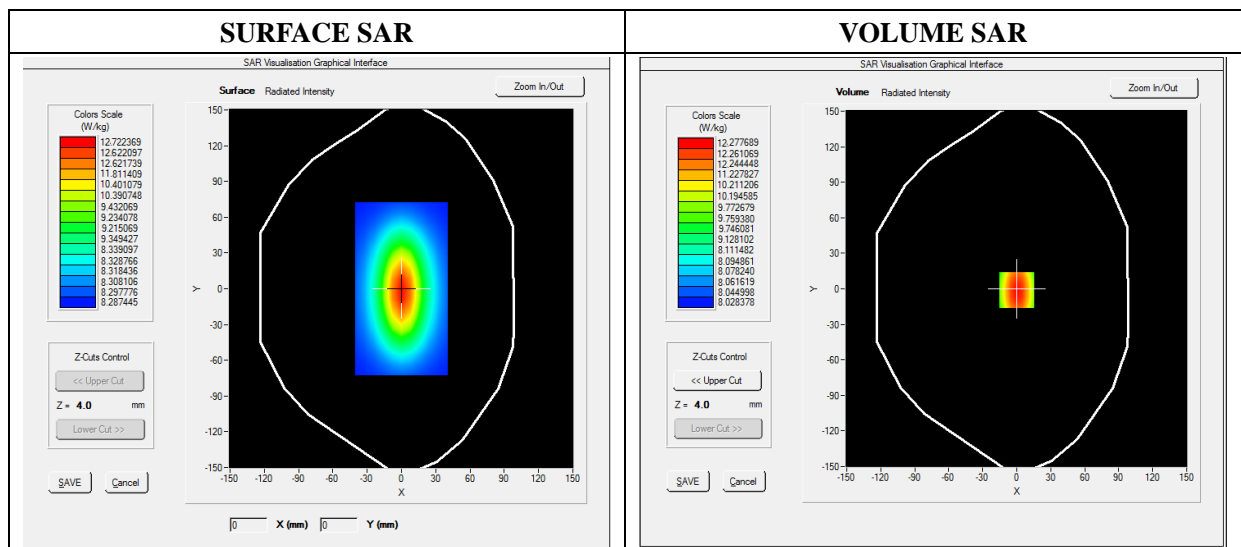
E-field Probe: SSE2 - SN 18/21 EPGO356; ConvF: 2.29; Calibrated: 2021-07-16

A. Experimental conditions

Area Scan	dx=8mm dy=8mm
Zoom Scan	dx=8mm dy=8mm dz=5mm
Phantom	Validation plane
Device Position	Dipole
Band	CW2450
Signal	CW (Crest factor: 1.0)

B. SAR Measurement Results

Frequency (MHz)	2450.000000
Relative Permittivity (real part)	39.450317
Conductivity (S/m)	1.783504
Power Variation (%)	-1.220000
Ambient Temperature	22.1
Liquid Temperature	22.1

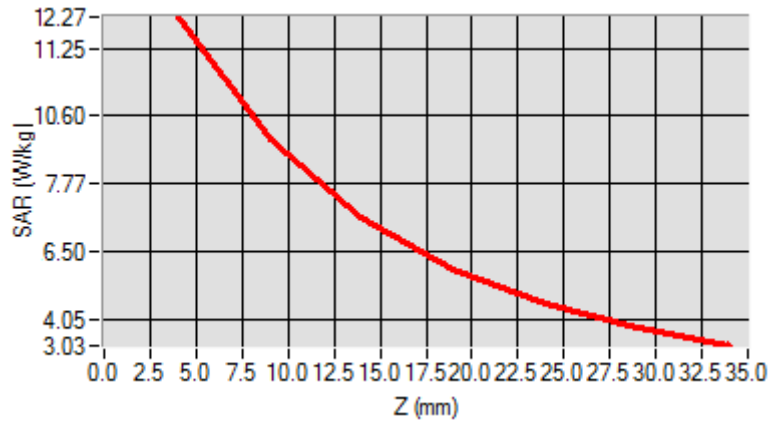


Maximum location: X=0.00, Y=0.00

SAR 10g (W/Kg)	6.053726
SAR 1g (W/Kg)	13.561382

Z Axis Scan

Z (mm)	0.00	4.00	9.00	14.00	19.00	24.00	29.00
SAR (W/Kg)	0.0000	12.2365	10.3321	8.4512	6.4365	5.6123	3.5621



3D screen shot	Hot spot position

MEASUREMENT 2

Type: Validation measurement (Fast, 75.00 %)

Measurement duration: 12 minutes 21 seconds

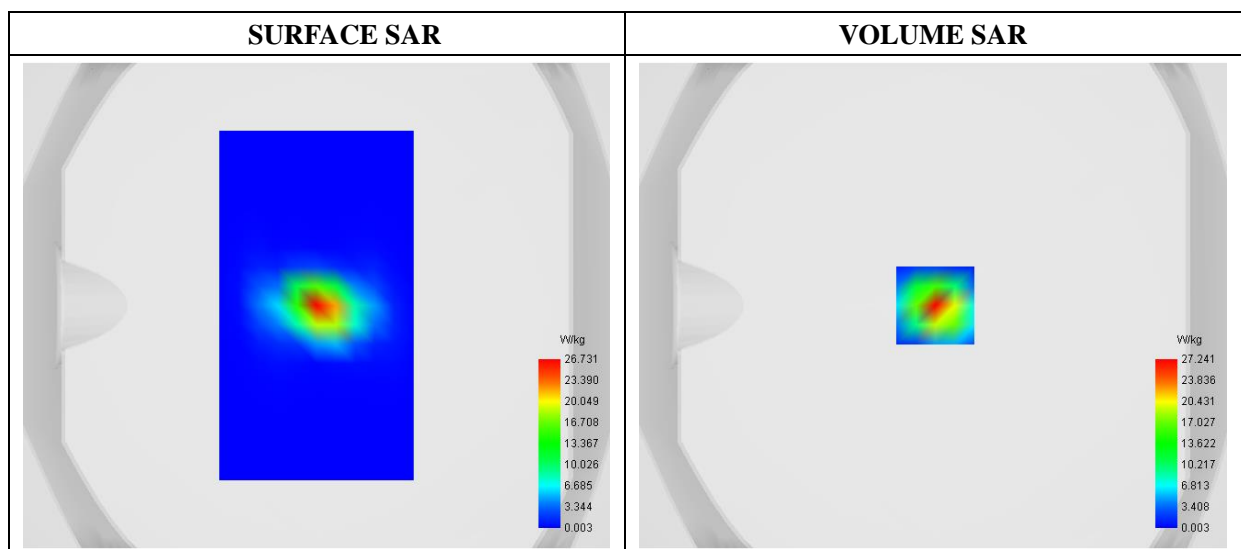
E-field Probe: SSE2 - SN 18/21 EPGO356; ConvF: 1.91; Calibrated: 2021-07-16

A. Experimental conditions

Area Scan	dx=8mm dy=8mm
Zoom Scan	dx=4mm dy=4mm dz=2mm
Phantom	Validation plane
Device Position	Dipole
Band	CW5200
Signal	CW (Crest factor: 1.0)

B. SAR Measurement Results

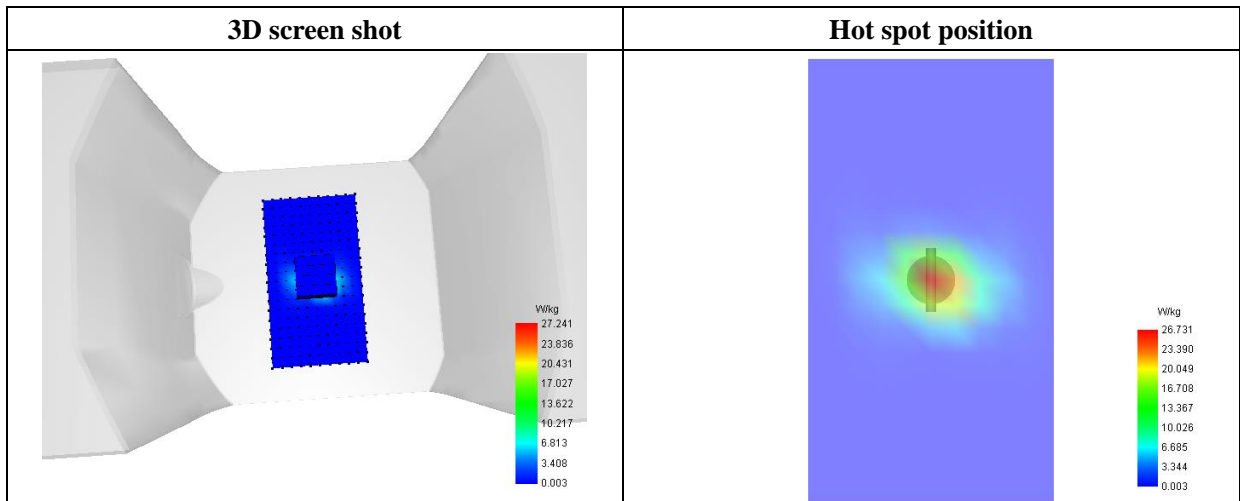
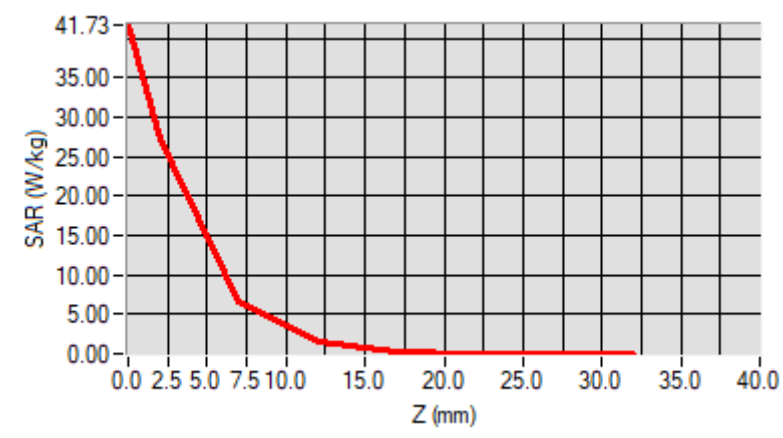
Frequency (MHz)	5200.000000
Relative Permittivity (real part)	35.452911
Conductivity (S/m)	4.693426
Power Variation (%)	-0.940000
Ambient Temperature	22.1
Liquid Temperature	22.1



Maximum location: X=1.00, Y=0.00

SAR 10g (W/Kg)	5.910334
SAR 1g (W/Kg)	16.746226

Z (mm)	0.00	2.00	7.00	12.00	17.00	22.00	27.00
SAR (W/Kg)	41.7264	27.2408	6.5746	1.6234	0.3765	0.0793	0.0129



MEASUREMENT 3

Type: Validation measurement (Fast, 75.00 %)

Measurement duration: 12 minutes 21 seconds

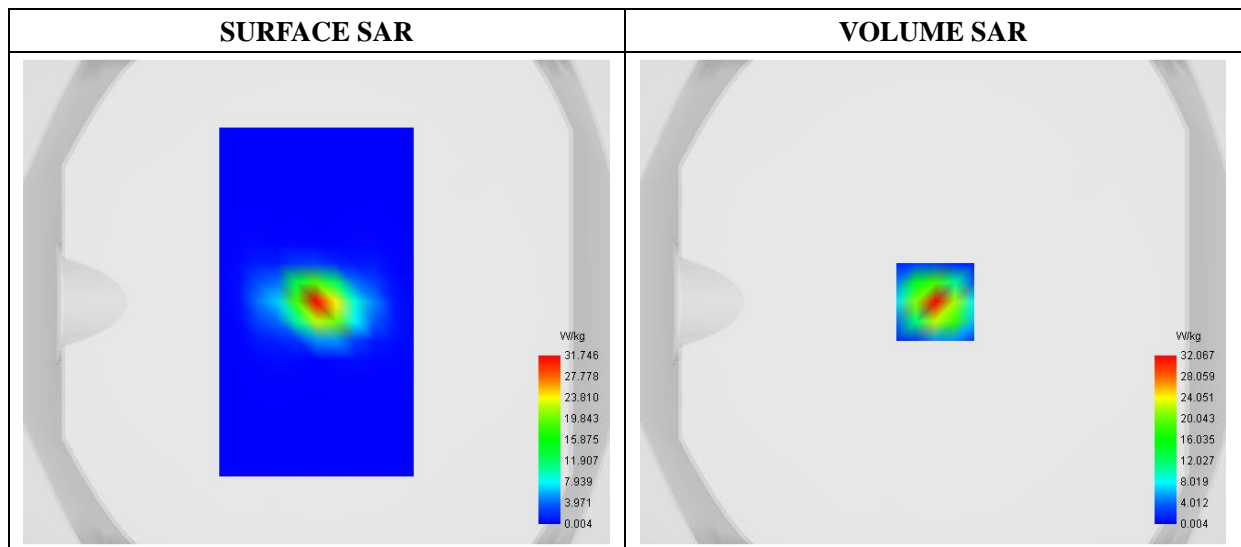
E-field Probe: SSE2 - SN 18/21 EPGO356; ConvF: 2.12; Calibrated: 2021-07-16

A. Experimental conditions

Area Scan	dx=8mm dy=8mm
Zoom Scan	dx=4mm dy=4mm dz=2mm
Phantom	Validation plane
Device Position	Dipole
Band	CW5400
Signal	CW (Crest factor: 1.0)

B. SAR Measurement Results

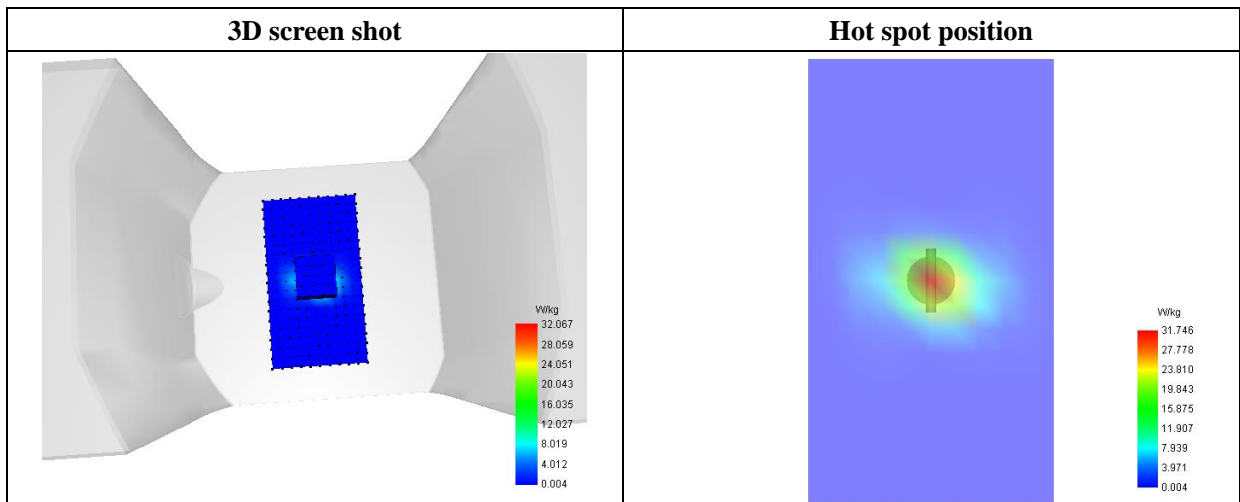
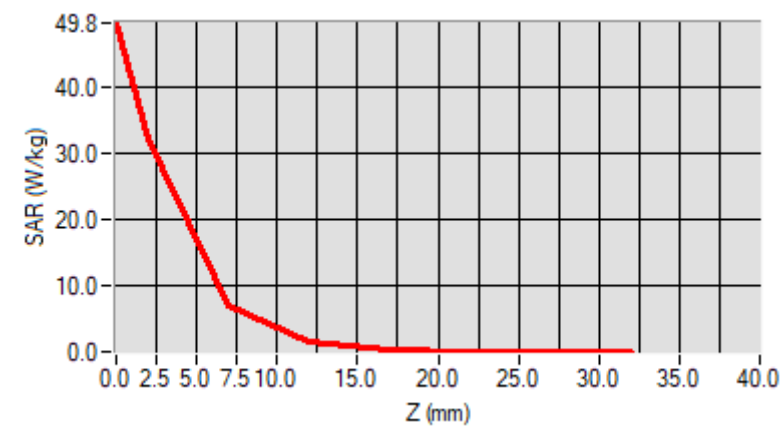
Frequency (MHz)	5400.000000
Relative Permittivity (real part)	36.520839
Conductivity (S/m)	4.810192
Power Variation (%)	1.020000
Ambient Temperature	22.1
Liquid Temperature	22.1



Maximum location: X=1.00, Y=0.00

SAR 10g (W/Kg)	6.047588
SAR 1g (W/Kg)	17.481175

Z (mm)	0.00	2.00	7.00	12.00	17.00	22.00	27.00
SAR (W/Kg)	49.8193	32.0669	7.0244	1.5969	0.3410	0.0635	0.0070



MEASUREMENT 4

Type: Validation measurement (Fast, 75.00 %)

Measurement duration: 12 minutes 21 seconds

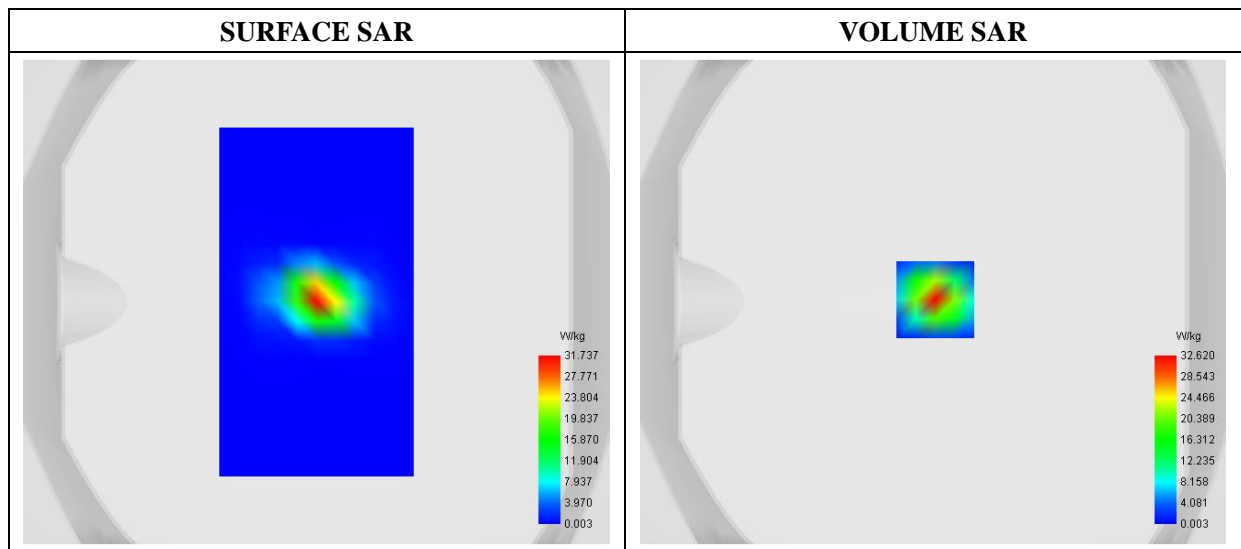
E-field Probe: SSE2 - SN 18/21 EPGO356; ConvF: 2.25; Calibrated: 2021-07-16

A. Experimental conditions

Area Scan	dx=8mm dy=8mm
Zoom Scan	dx=4mm dy=4mm dz=2mm
Phantom	Validation plane
Device Position	Dipole
Band	CW5600
Signal	CW (Crest factor: 1.0)

B. SAR Measurement Results

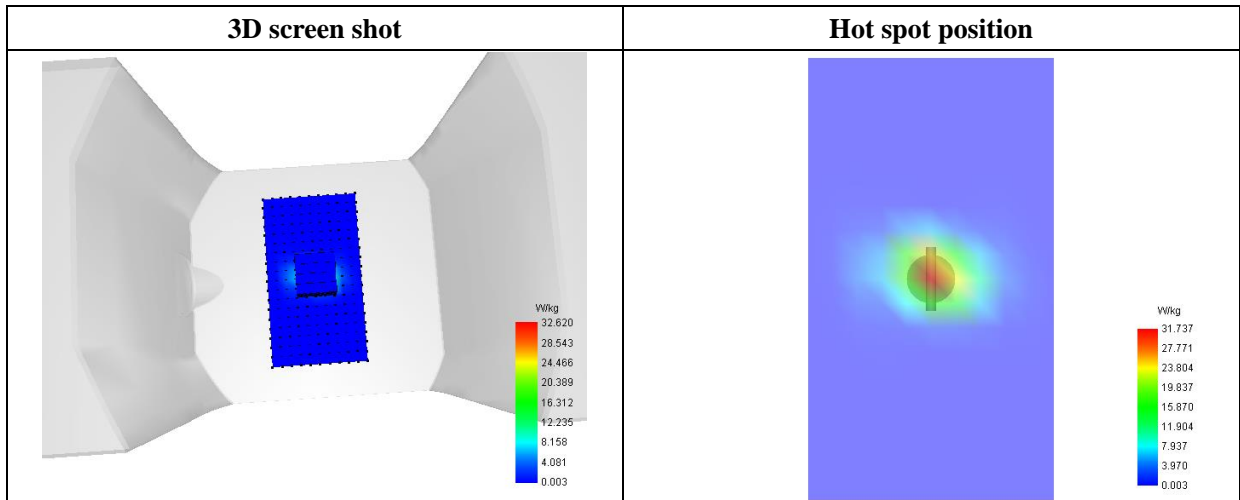
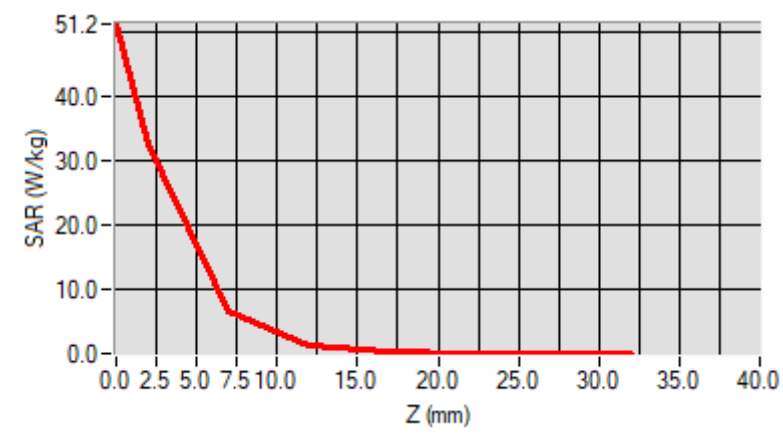
Frequency (MHz)	5600.000000
Relative Permittivity (real part)	35.171205
Conductivity (S/m)	5.110357
Power Variation (%)	-0.640000
Ambient Temperature	22.1
Liquid Temperature	22.1



Maximum location: X=1.00, Y=1.00

SAR 10g (W/Kg)	5.922791
SAR 1g (W/Kg)	17.604052

Z (mm)	0.00	2.00	7.00	12.00	17.00	22.00	27.00
SAR (W/Kg)	51.2061	32.6198	6.6166	1.3486	0.2638	0.0509	0.0050



MEASUREMENT 5

Type: Validation measurement (Fast, 75.00 %)

Measurement duration: 12 minutes 21 seconds

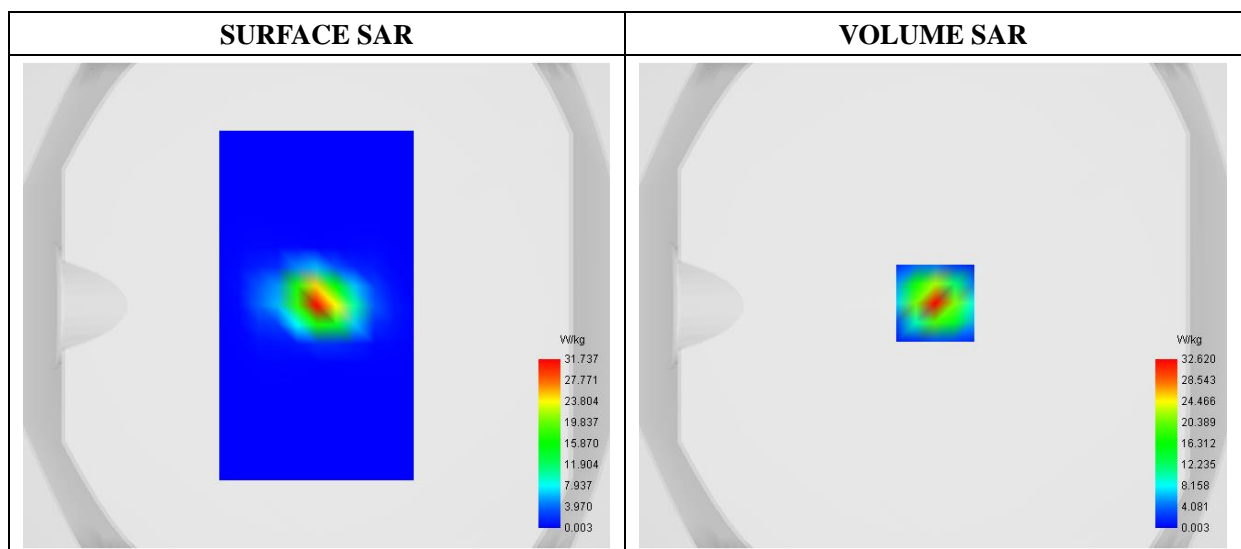
E-field Probe: SSE2 - SN 18/21 EPGO356; ConvF: 2.15; Calibrated: 2021-07-16

A. Experimental conditions

Area Scan	dx=8mm dy=8mm
Zoom Scan	dx=4mm dy=4mm dz=2mm
Phantom	Validation plane
Device Position	Dipole
Band	CW5800
Signal	CW (Crest factor: 1.0)

B. SAR Measurement Results

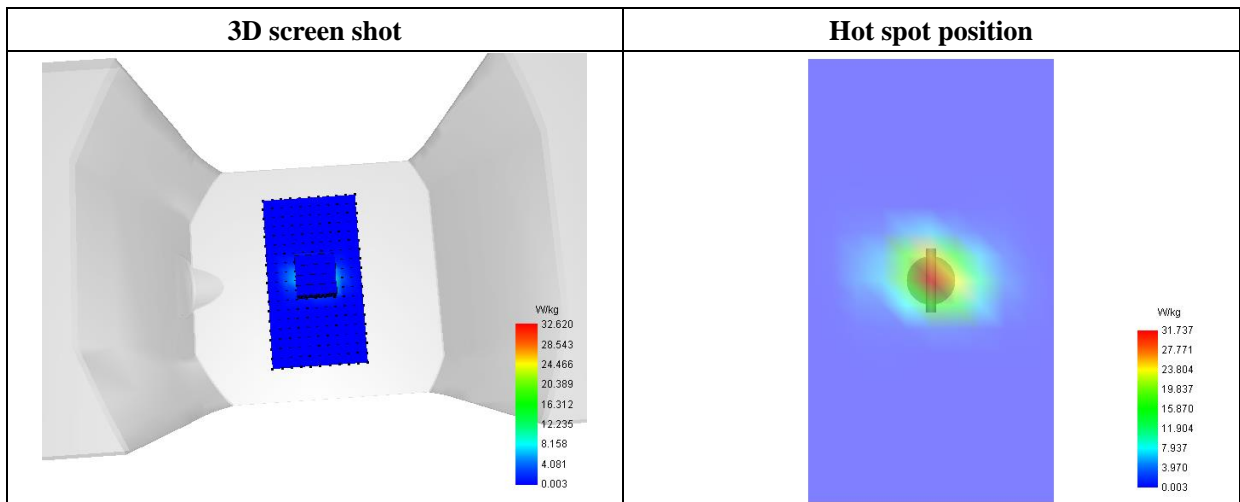
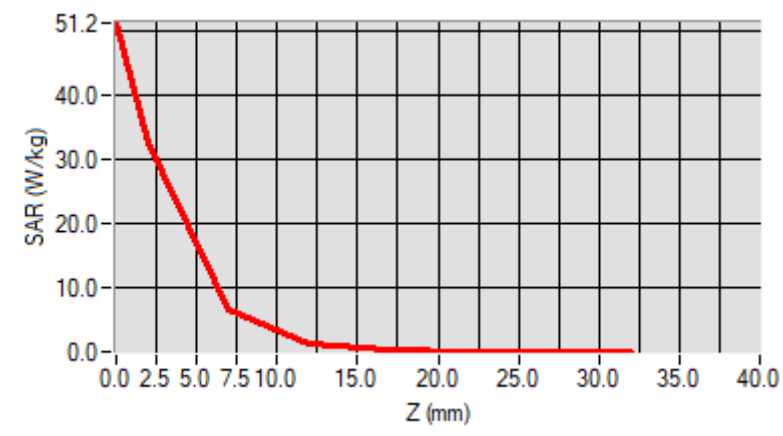
Frequency (MHz)	5800.000000
Relative Permittivity (real part)	34.623814
Conductivity (S/m)	5.232705
Power Variation (%)	-1.640000
Ambient Temperature	22.1
Liquid Temperature	22.1



Maximum location: X=1.00, Y=1.00

SAR 10g (W/Kg)	5.983506
SAR 1g (W/Kg)	17.960742

Z (mm)	0.00	2.00	7.00	12.00	17.00	22.00	27.00
SAR (W/Kg)	51.2061	32.6198	6.6166	1.3486	0.2638	0.0509	0.0050



Annex B. Plots of SAR Measurement

MEASUREMENT 1

Type: Phone measurement (Complete)

Date of measurement: 2022-05-17

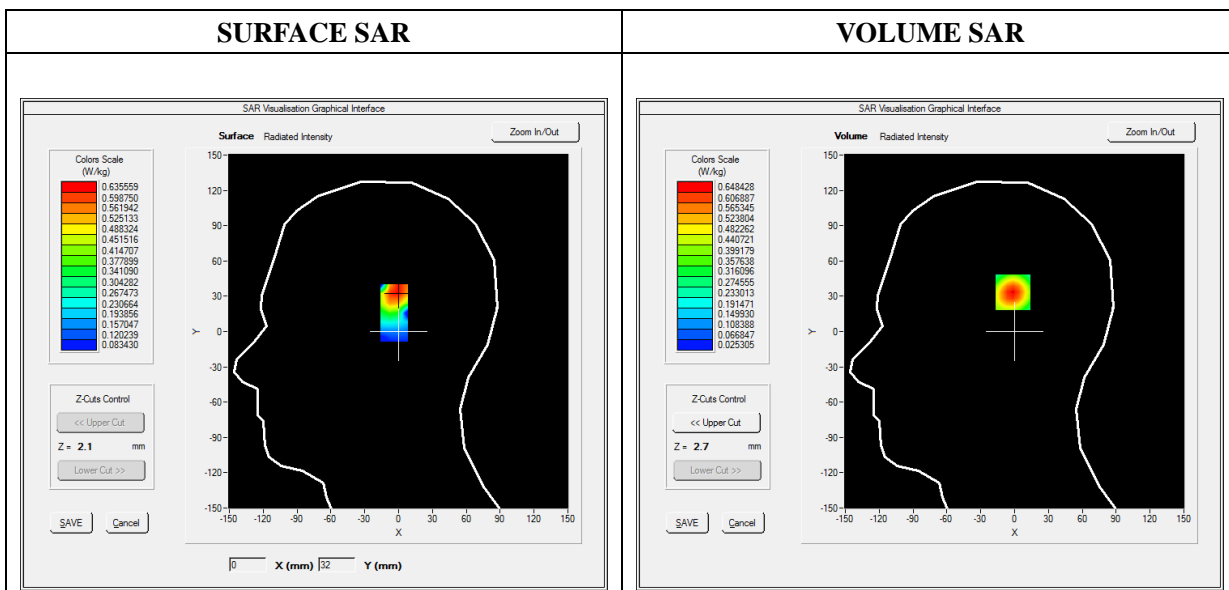
Measurement duration: 12 minutes 21 seconds

A. Experimental conditions

Area Scan	dx=8mm dy=8mm
Phantom	Left head
Device Position	Cheek
Band	WiFi_802.11b
Channels	Middle
Signal	Duty Cycle 1:1

B. SAR Measurement Results

Frequency (MHz)	2437.000000
Relative Permittivity (real part)	39.450212
Conductivity (S/m)	1.781248
Power Variation (%)	-1.760000
Ambient Temperature	22.3
Liquid Temperature	22.3

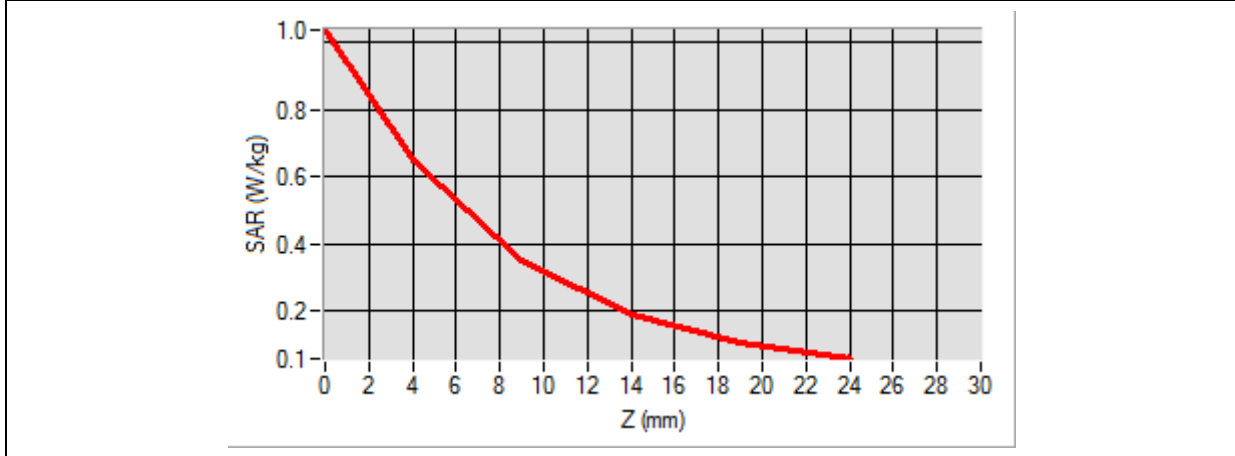


Maximum location: X=0.00, Y=35.00

SAR Peak: 1.04 W/kg

SAR 10g (W/Kg)	0.326561
SAR 1g (W/Kg)	0.600391

Z (mm)	0.00	4.00	9.00	14.00	19.00
SAR (W/Kg)	1.0389	0.6484	0.3477	0.1859	0.1034



3D screen shot	Hot spot position
<p>A 3D rendering of a human head model. A grid of blue dots is overlaid on the face area. A small region in the center of the face is highlighted with a color gradient from green to red, indicating the location of the maximum SAR (hot spot).</p>	<p>A small 3D visualization of the hot spot, showing a color gradient from green to red, representing the intensity of the SAR peak.</p>

MEASUREMENT 2

Type: Phone measurement (Complete)
 Date of measurement: 2022-05-17
 Measurement duration: 12 minutes 3 seconds

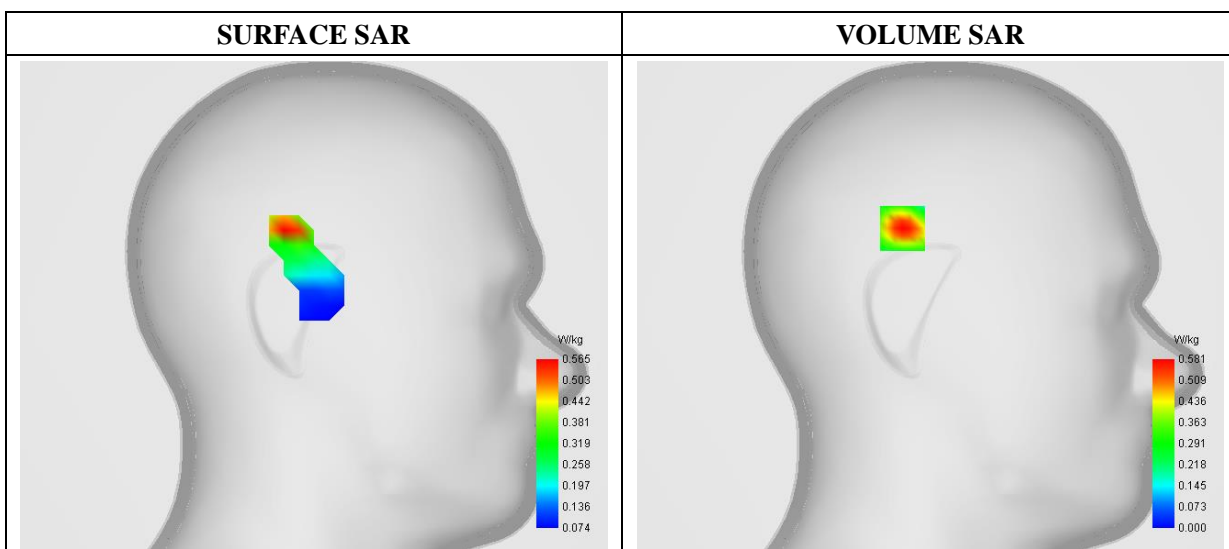
A. Experimental conditions

Area Scan	dx=8mm dy=8mm
Phantom	Left Head
Device Position	Cheek
Band	U-NIII-1_802.11a
Channels	Middle
Signal	Duty Cycle: 1:1

B. SAR Measurement Results

Frequency (MHz)	5200.000000
Relative Permittivity (real part)	35.453869
Conductivity (S/m)	4.693611
Power Variation (%)	-1.150000
Ambient Temperature	22.3
Liquid Temperature	22.3

C. SAR Surface and Volume



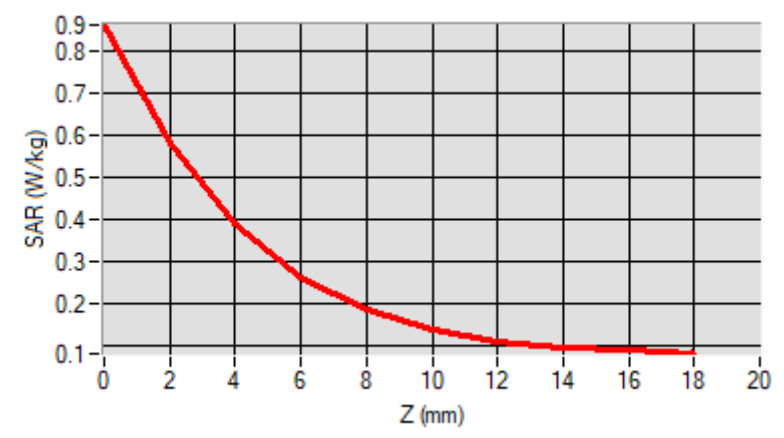
Maximum location: X=15.00, Y=41.00

D. SAR 1g & 10g

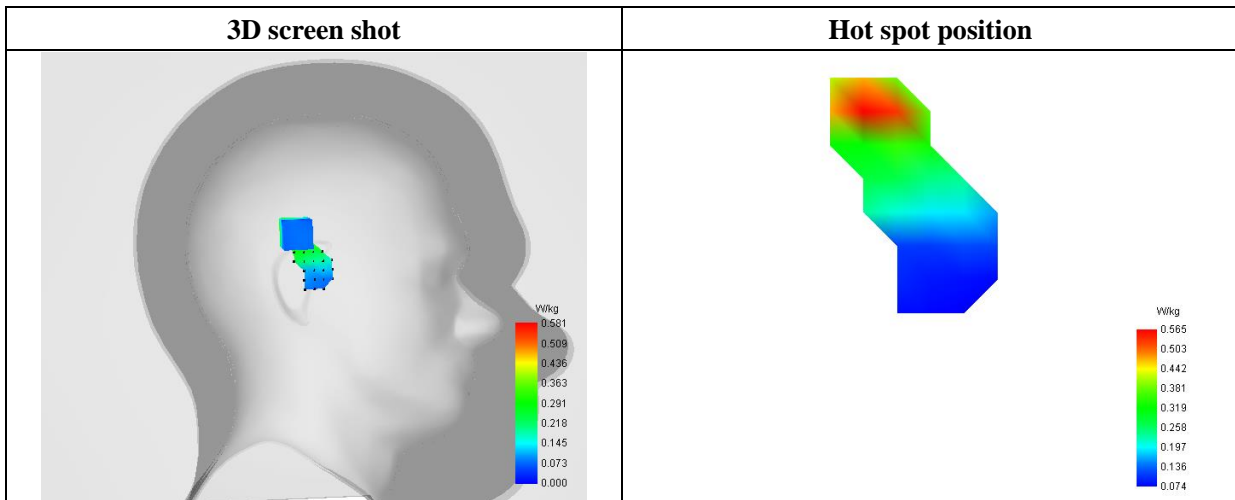
SAR 10g (W/Kg)	0.260533
SAR 1g (W/Kg)	0.548450

E. Z Axis Scan

Z (mm)	0.00	2.00	4.00	6.00	8.00	10.00	12.00	14.00	16.00	18.00
SAR (W/Kg)	0.8603	0.5814	0.3876	0.2604	0.1827	0.1362	0.1090	0.0937	0.0898	0.0898



F. 3D Image



MEASUREMENT 3

Type: Phone measurement (Complete)
 Date of measurement: 2022-05-17
 Measurement duration: 12 minutes 3 seconds

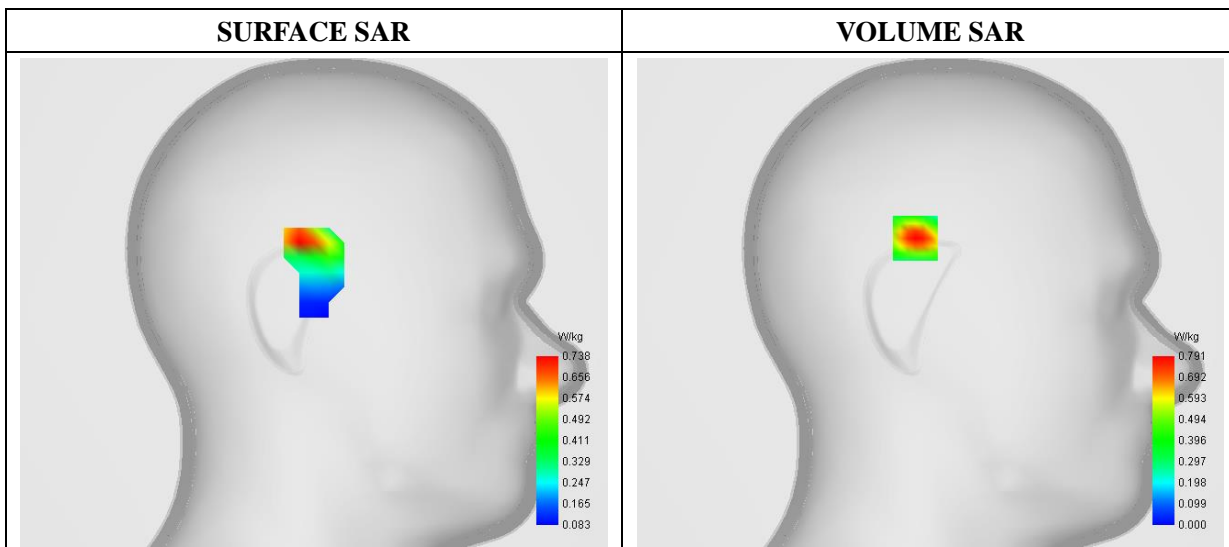
A. Experimental conditions

Area Scan	dx=8mm dy=8mm
Phantom	Left Head
Device Position	Cheek
Band	U-NIII-2A_802.11a
Channels	Low
Signal	Duty Cycle: 1:1

B. SAR Measurement Results

Frequency (MHz)	5260.000000
Relative Permittivity (real part)	35.452839
Conductivity (S/m)	4.691928
Power Variation (%)	0.460000
Ambient Temperature	22.3
Liquid Temperature	22.3

C. SAR Surface and Volume



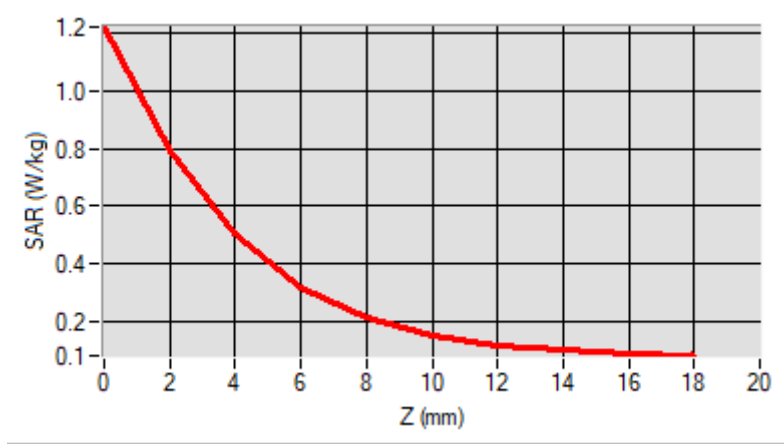
Maximum location: X=8.00, Y=34.00

D. SAR 1g & 10g

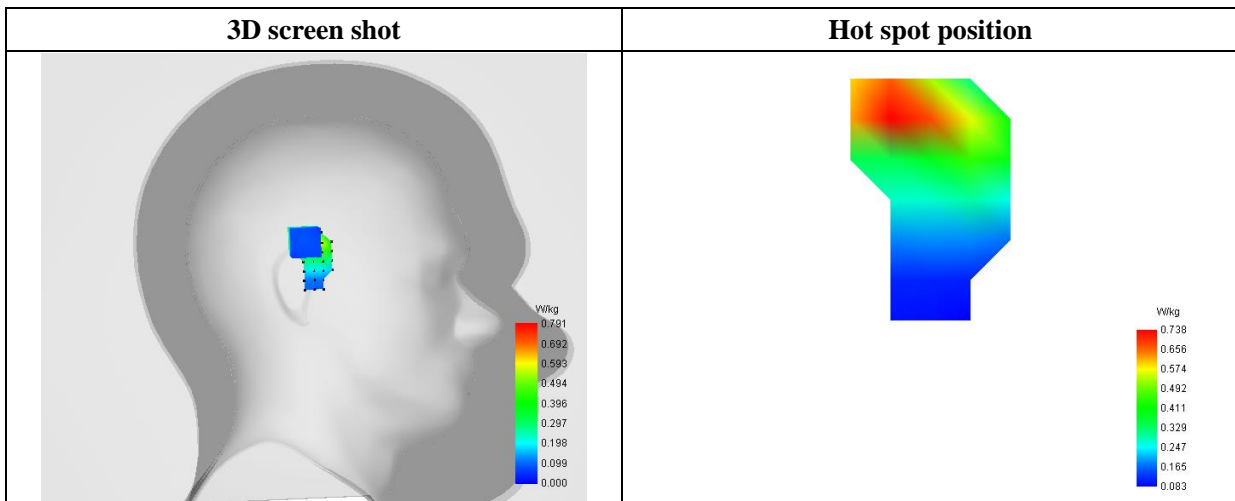
SAR 10g (W/Kg)	0.330899
SAR 1g (W/Kg)	0.750420

E. Z Axis Scan

Z (mm)	0.00	2.00	4.00	6.00	8.00	10.00	12.00	14.00	16.00	18.00
SAR (W/Kg)	1.2232	0.7912	0.5025	0.3191	0.2112	0.1494	0.1152	0.0970	0.0860	0.0860



F. 3D Image



MEASUREMENT 4

Type: Phone measurement (Complete)
 Date of measurement: 2022-05-17
 Measurement duration: 12 minutes 21 seconds

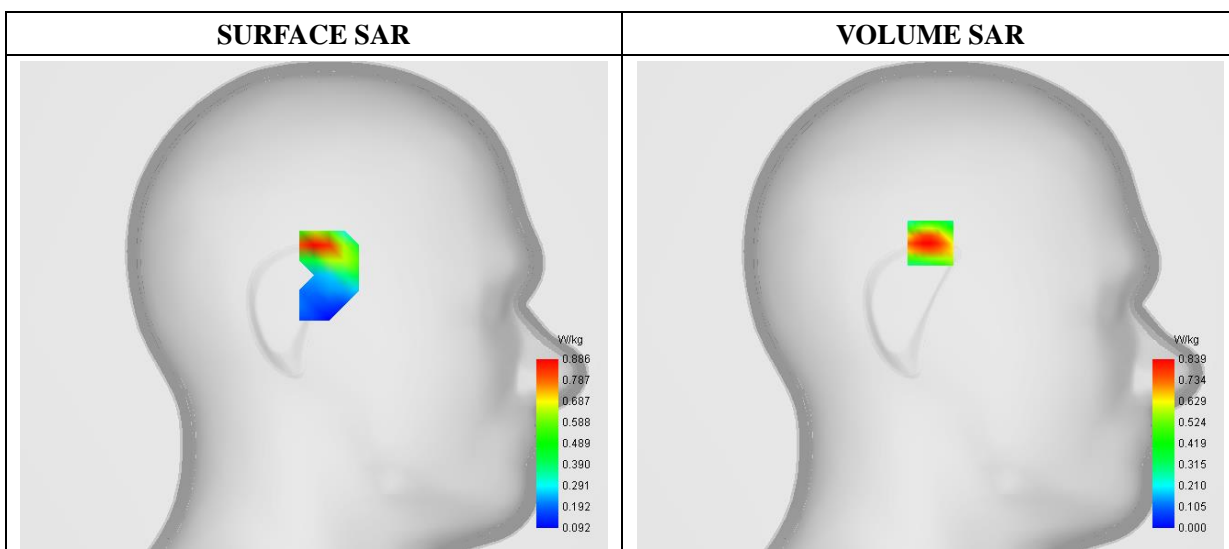
A. Experimental conditions

Area Scan	dx=8mm dy=8mm
Phantom	Left Head
Device Position	Cheek
Band	U-NIII-2C_802.11a
Channels	Middle
Signal	Duty Cycle: 1:1

B. SAR Measurement Results

Frequency (MHz)	5580.000000
Relative Permittivity (real part)	35.172963
Conductivity (S/m)	5.113278
Power Variation (%)	-1.840000
Ambient Temperature	22.3
Liquid Temperature	22.3

C. SAR Surface and Volume



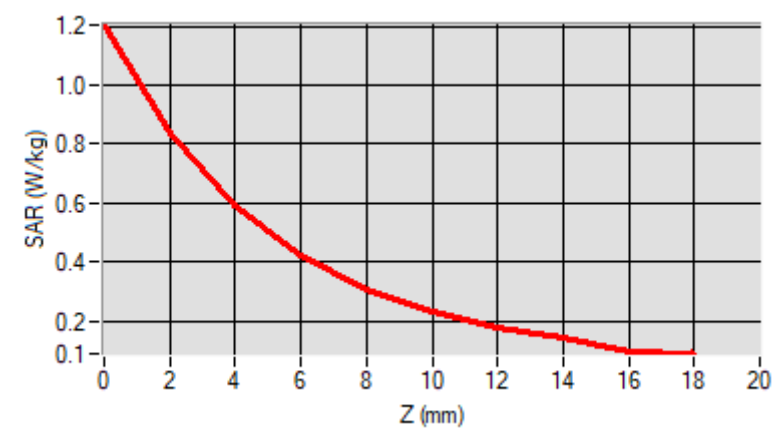
Maximum location: X=0.00, Y=33.00

D. SAR 1g & 10g

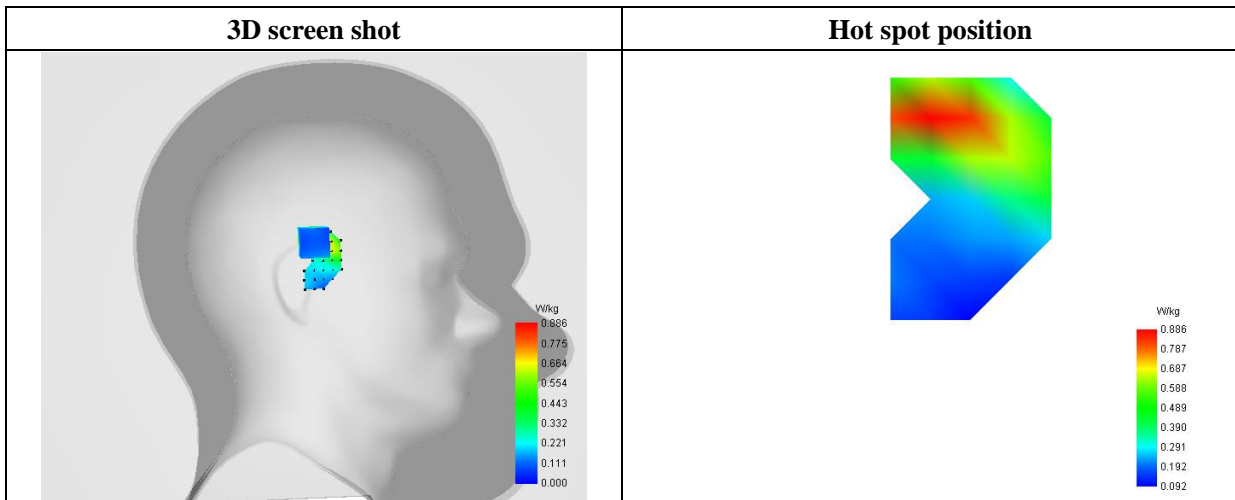
SAR 10g (W/Kg)	0.383259
SAR 1g (W/Kg)	0.692629

E. Z Axis Scan

Z (mm)	0.00	2.00	4.00	6.00	8.00	10.00	12.00	14.00	16.00	16.00
SAR (W/Kg)	1.2042	0.8388	0.5940	0.4222	0.3075	0.2309	0.1795	0.1441	0.0944	0.0944



F. 3D Image



MEASUREMENT 5

Type: Phone measurement (Complete)
 Date of measurement: 2022-05-17
 Measurement duration: 12 minutes 21 seconds

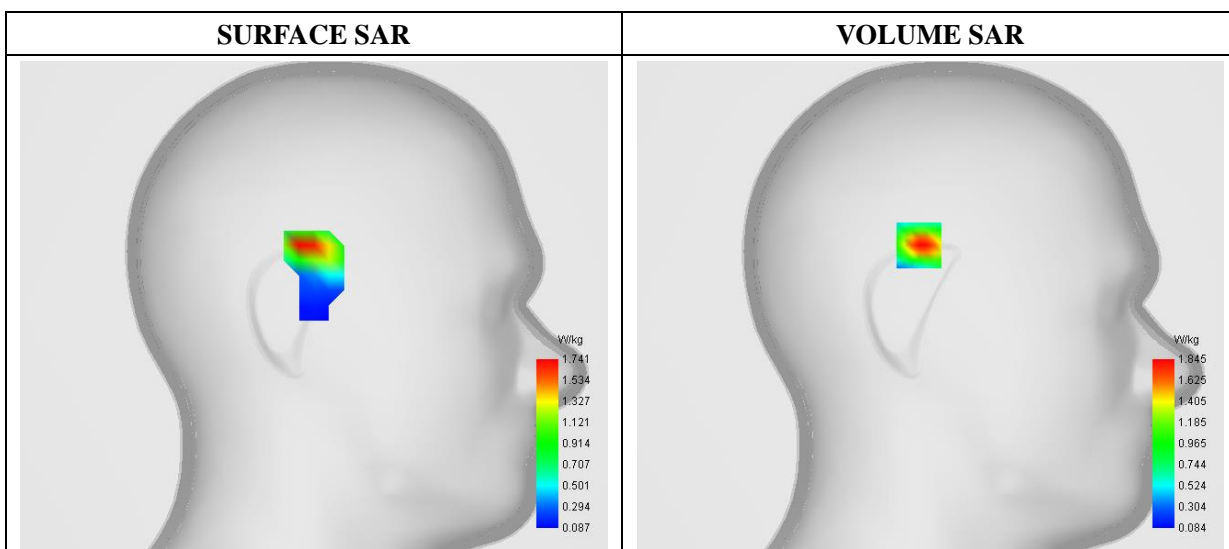
A. Experimental conditions

Area Scan	dx=8mm dy=8mm
Phantom	Left Head
Device Position	Cheek
Band	U-NIII-3_802.11a
Channels	High
Signal	Duty Cycle: 1:1

B. SAR Measurement Results

Frequency (MHz)	5825.000000
Relative Permittivity (real part)	34.622273
Conductivity (S/m)	5.230836
Power Variation (%)	-1.290000
Ambient Temperature	22.3
Liquid Temperature	22.3

C. SAR Surface and Volume



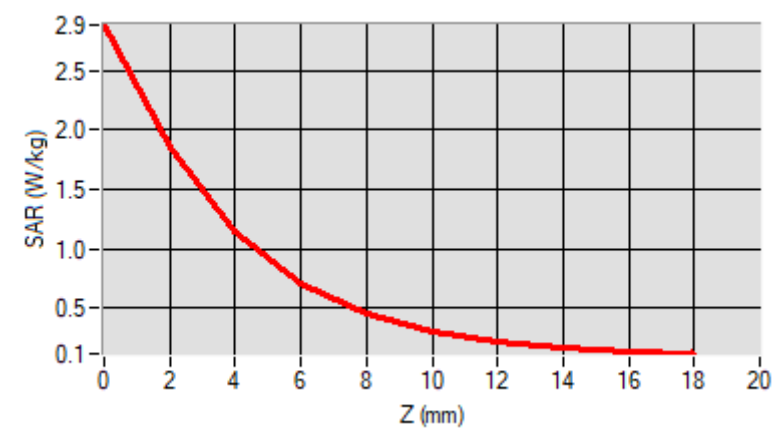
Maximum location: X=6.00, Y=32.00

D. SAR 1g & 10g

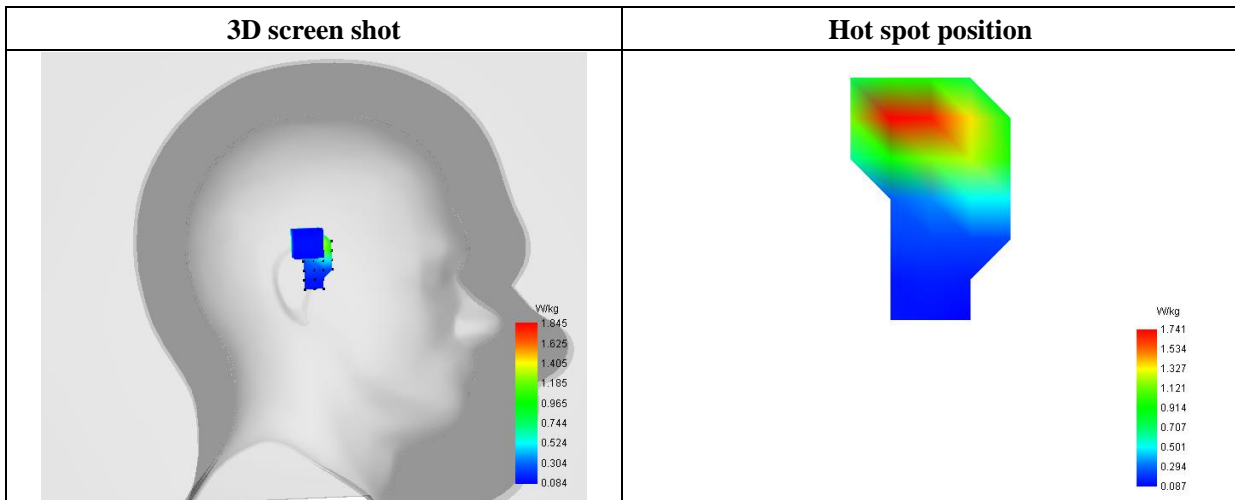
SAR 10g (W/Kg)	0.390467
SAR 1g (W/Kg)	0.722065

E. Z Axis Scan

Z (mm)	0.00	2.00	4.00	6.00	8.00	10.00	12.00	14.00	16.00
SAR (W/Kg)	2.8789	1.8453	1.1546	0.7145	0.4540	0.3031	0.2170	0.1682	0.1396



F. 3D Image



MEASUREMENT 6/11

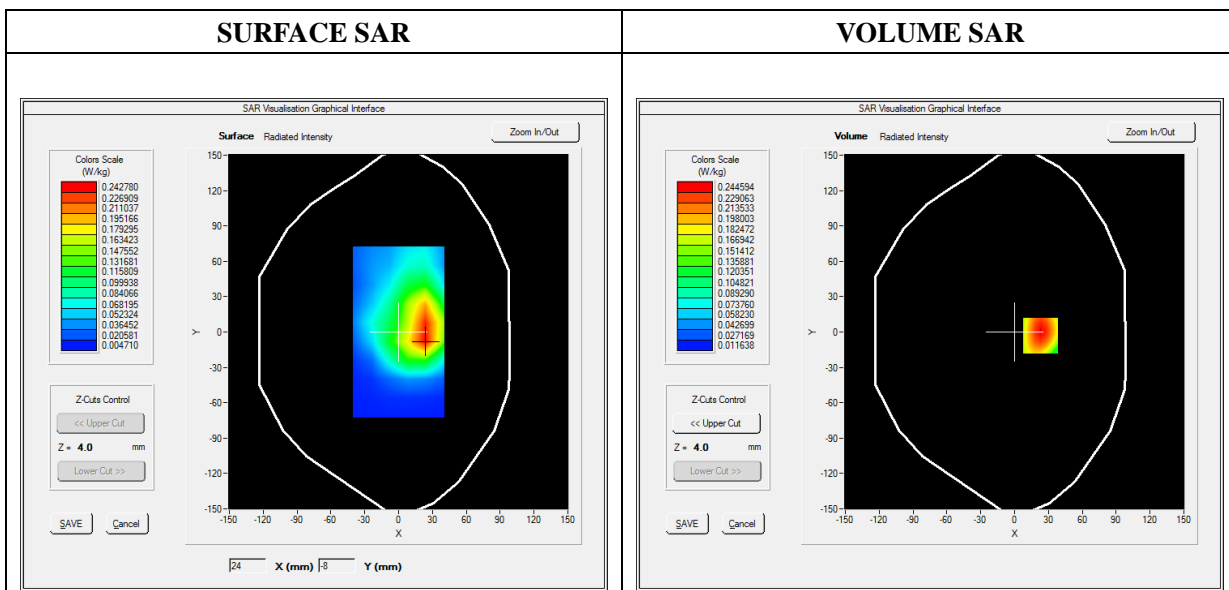
Type: Phone measurement (Complete)
 Date of measurement: 2022-05-17
 Measurement duration: 12 minutes 21 seconds

A. Experimental conditions

Area Scan	dx=8mm dy=8mm
Phantom	Flat plane
Device Position	Back
Band	WiFi_802.11b
Channels	Middle
Signal	Duty Cycle 1:1

B. SAR Measurement Results

Frequency (MHz)	2437.000000
Relative Permittivity (real part)	39.450212
Conductivity (S/m)	1.781248
Power Variation (%)	-1.980000
Ambient Temperature	22.3
Liquid Temperature	22.3



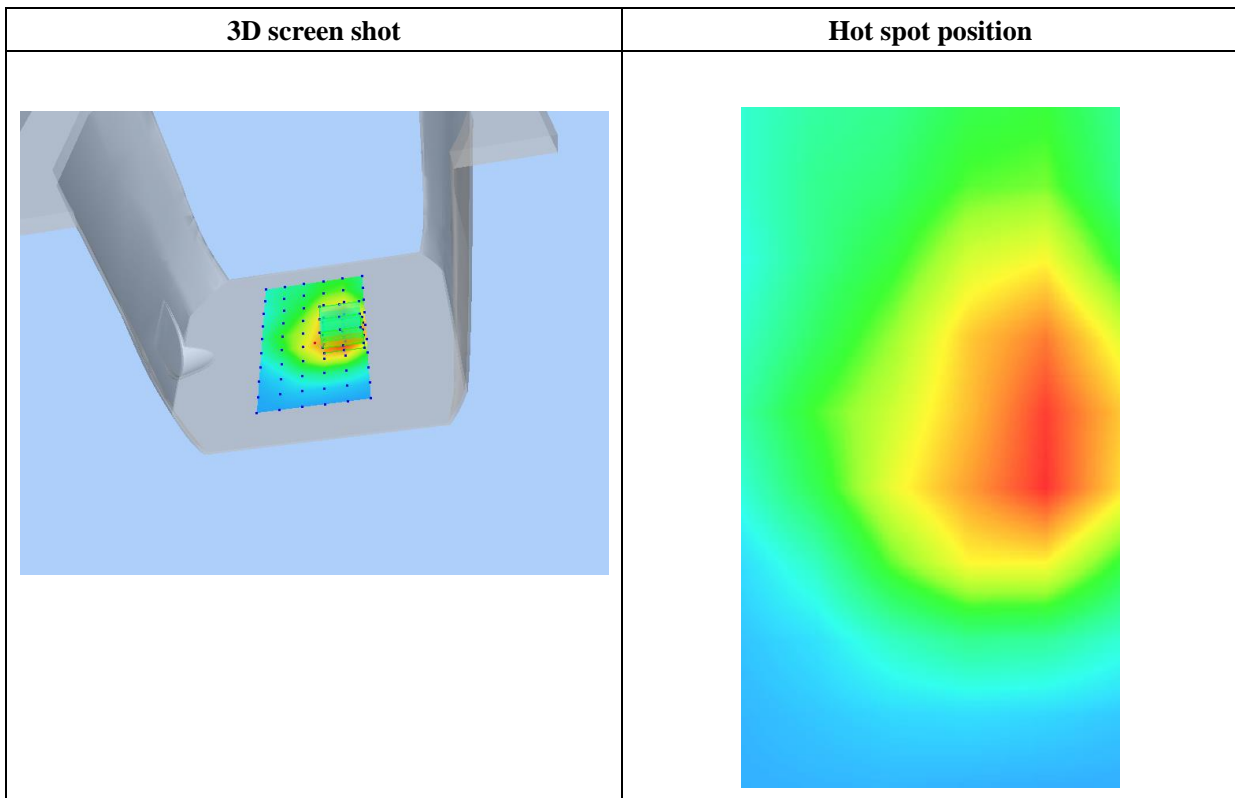
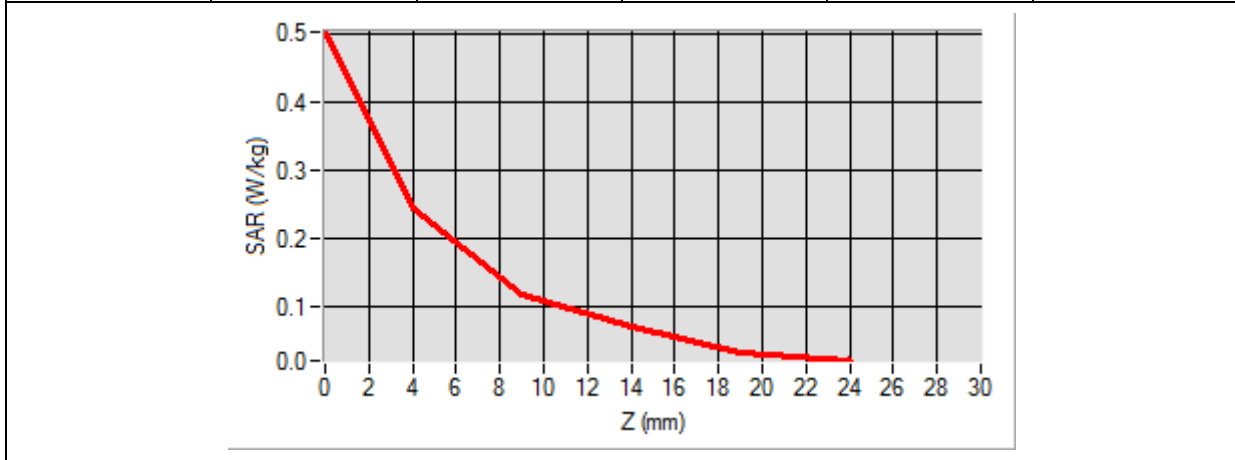
Maximum location: X=23.00, Y=-3.00

SAR Peak: 0.40 W/kg

SAR 10g (W/Kg)	0.130456
-----------------------	-----------------

SAR 1g (W/Kg)	0.272397
----------------------	-----------------

Z (mm)	0.00	4.00	9.00	14.00	19.00
SAR (W/Kg)	0.5030	0.2446	0.1170	0.0690	0.0319



MEASUREMENT 7/12

Type: Phone measurement (Complete)
 Date of measurement: 2022-05-17
 Measurement duration: 12 minutes 3 seconds

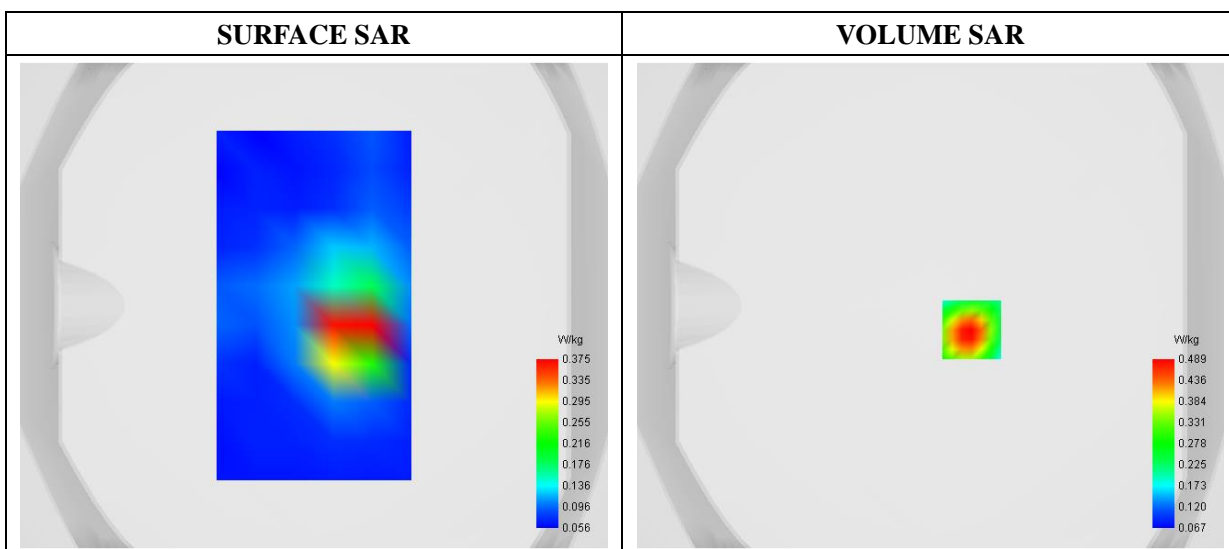
A. Experimental conditions

Area Scan	dx=8mm dy=8mm
Phantom	Flat Plane
Device Position	Back
Band	U-NIII-1_802.11a
Channels	Middle
Signal	Duty Cycle: 1:1

B. SAR Measurement Results

Frequency (MHz)	5200.000000
Relative Permittivity (real part)	35.453869
Conductivity (S/m)	4.693611
Power Variation (%)	1.550000
Ambient Temperature	22.3
Liquid Temperature	22.3

C. SAR Surface and Volume



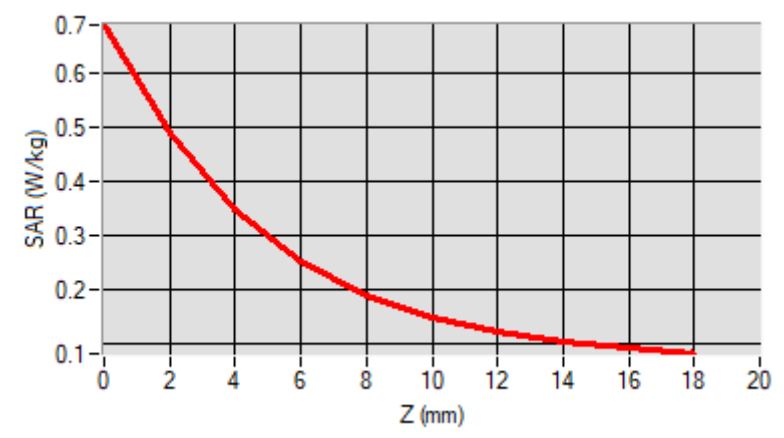
Maximum location: X=17.00, Y=-10.00

D. SAR 1g & 10g

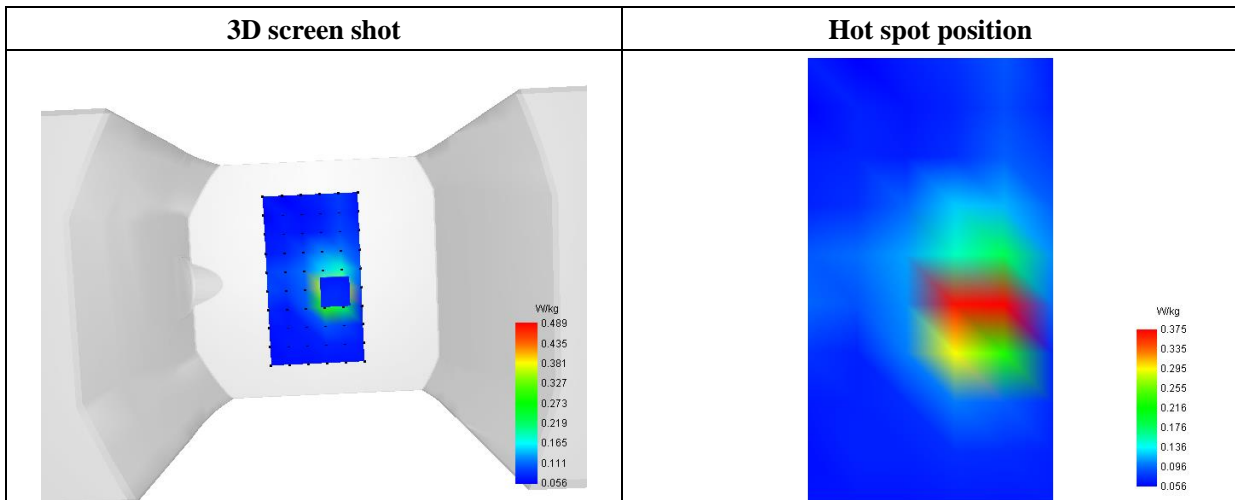
SAR 10g (W/Kg)	0.172508
SAR 1g (W/Kg)	0.331059

E. Z Axis Scan

Z (mm)	0.00	2.00	4.00	6.00	8.00	10.00	12.00	14.00	16.00	18.00
SAR (W/Kg)	0.6876	0.4890	0.3485	0.2511	0.1872	0.1457	0.1188	0.1012	0.0891	0.0891



F. 3D Image



MEASUREMENT 8/13

Type: Phone measurement (Complete)
 Date of measurement: 2022-05-17
 Measurement duration: 12 minutes 3 seconds

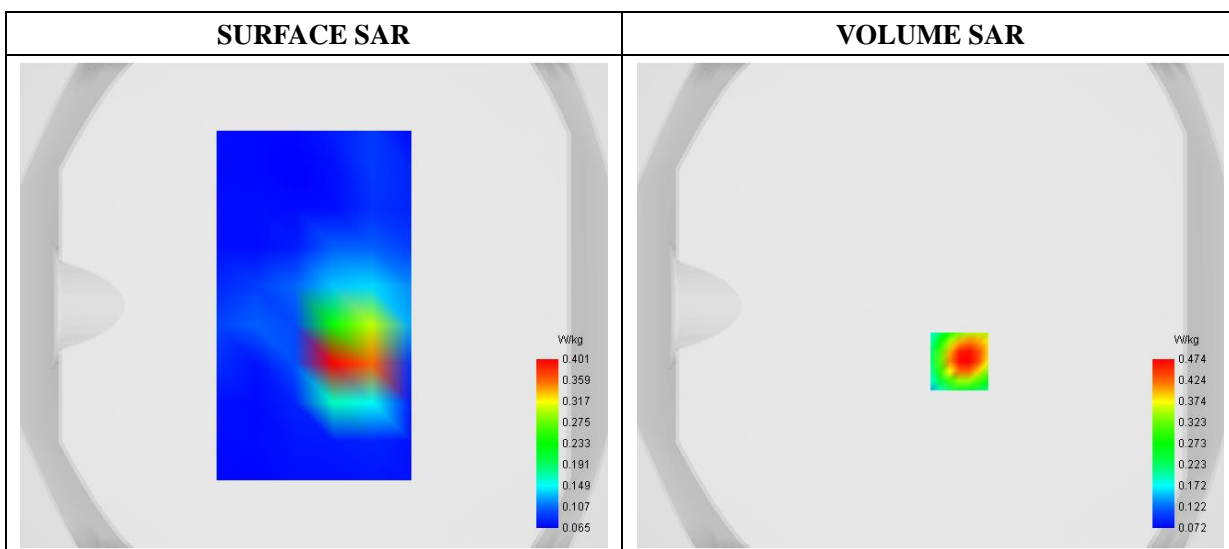
A. Experimental conditions

Area Scan	dx=8mm dy=8mm
Phantom	Flat Plane
Device Position	Back
Band	U-NIII-2A_802.11a
Channels	Low
Signal	Duty Cycle: 1:1

B. SAR Measurement Results

Frequency (MHz)	5260.000000
Relative Permittivity (real part)	35.452839
Conductivity (S/m)	4.691928
Power Variation (%)	1.110000
Ambient Temperature	22.3
Liquid Temperature	22.3

C. SAR Surface and Volume



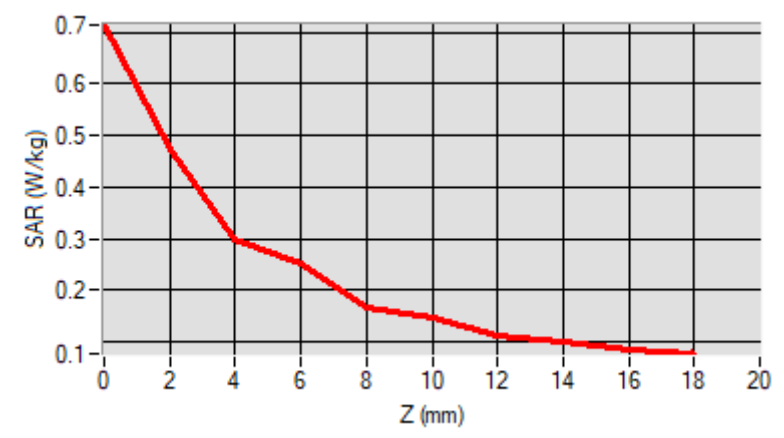
Maximum location: X=12.00, Y=-23.00

D. SAR 1g & 10g

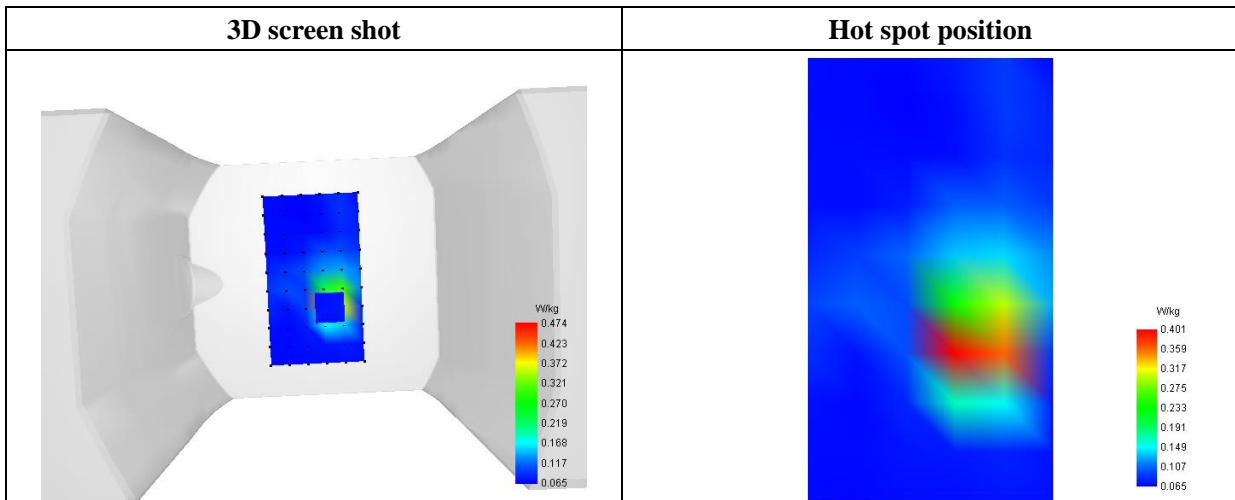
SAR 10g (W/Kg)	0.174029
SAR 1g (W/Kg)	0.329747

E. Z Axis Scan

Z (mm)	0.00	2.00	4.00	6.00	8.00	10.00	12.00	14.00	16.00
SAR (W/Kg)	0.7145	0.4743	0.2998	0.2505	0.1687	0.1476	0.1107	0.1015	0.0840



F. 3D Image



MEASUREMENT 9/14

Type: Phone measurement (Complete)
 Date of measurement: 2022-05-17
 Measurement duration: 12 minutes 21 seconds

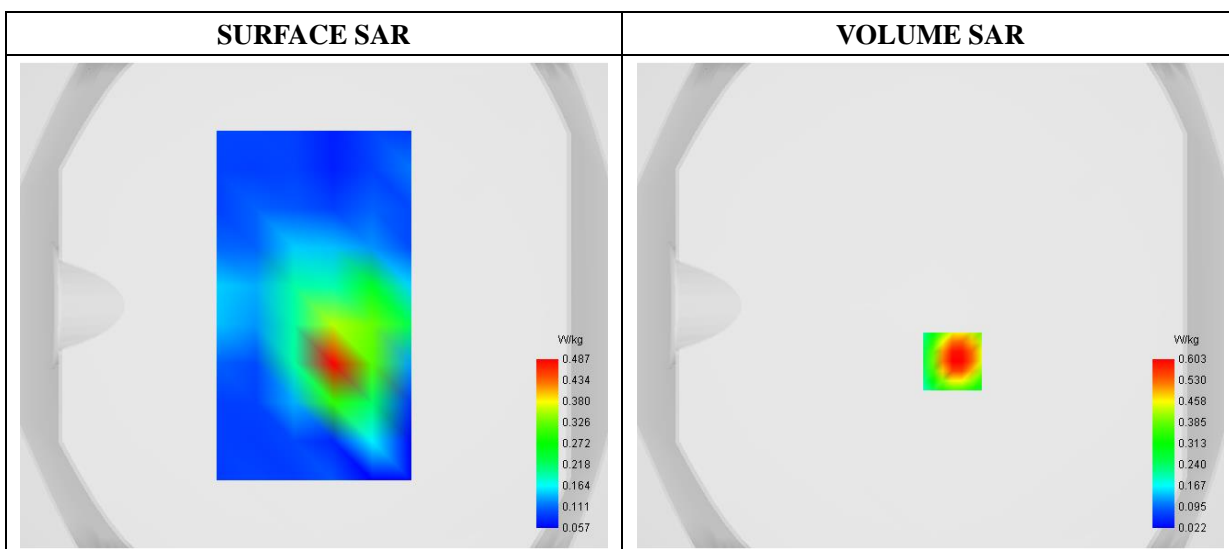
A. Experimental conditions

Area Scan	dx=8mm dy=8mm
Phantom	Flat Plane
Device Position	Back
Band	U-NIII-2C_802.11a
Channels	Middle
Signal	Duty Cycle: 1:1

B. SAR Measurement Results

Frequency (MHz)	5580.000000
Relative Permittivity (real part)	35.172963
Conductivity (S/m)	5.113278
Power Variation (%)	0.750000
Ambient Temperature	22.3
Liquid Temperature	22.3

C. SAR Surface and Volume



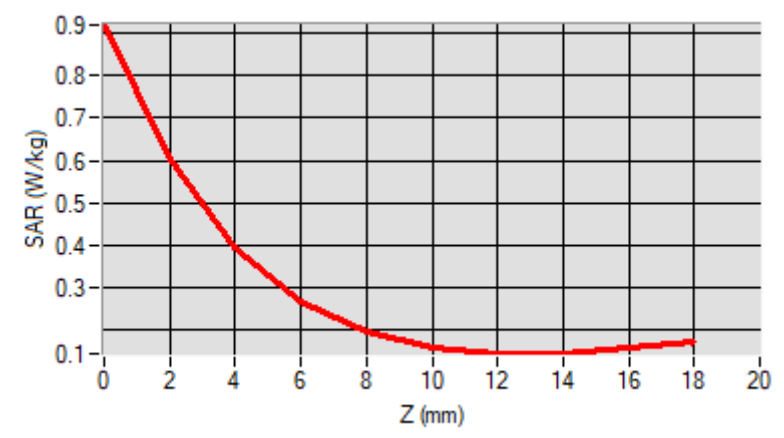
Maximum location: X=9.00, Y=-23.00

D. SAR 1g & 10g

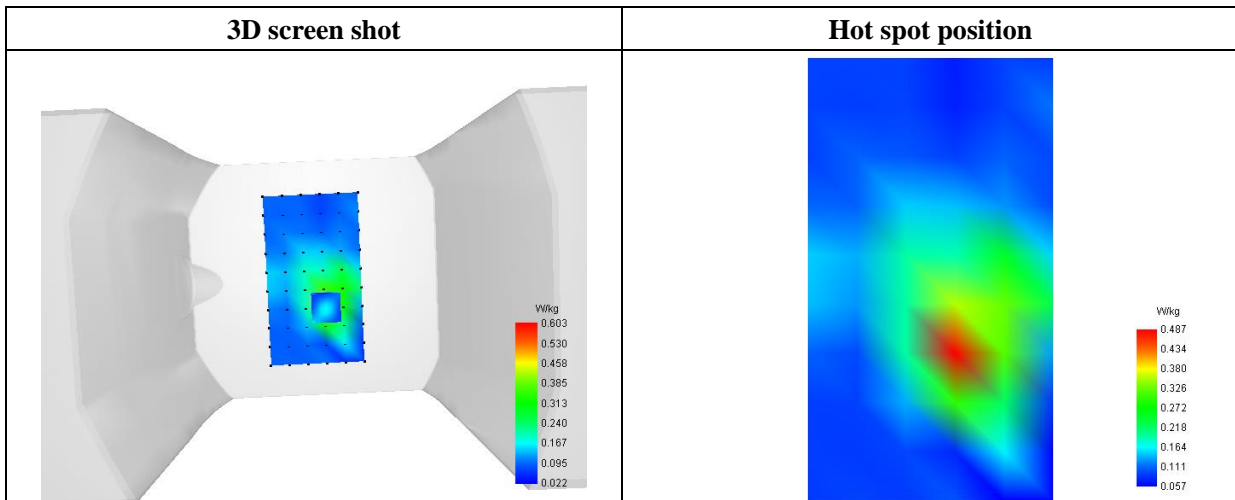
SAR 10g (W/Kg)	0.206625
SAR 1g (W/Kg)	0.394693

E. Z Axis Scan

Z (mm)	0.00	2.00	4.00	6.00	8.00	10.00	12.00	14.00	16.00	18.00
SAR (W/Kg)	0.9200	0.6030	0.3937	0.2646	0.1932	0.1572	0.1435	0.1445	0.1445	0.1555



F. 3D Image



MEASUREMENT 10/15

Type: Phone measurement (Complete)
 Date of measurement: 2022-05-17
 Measurement duration: 12 minutes 21 seconds

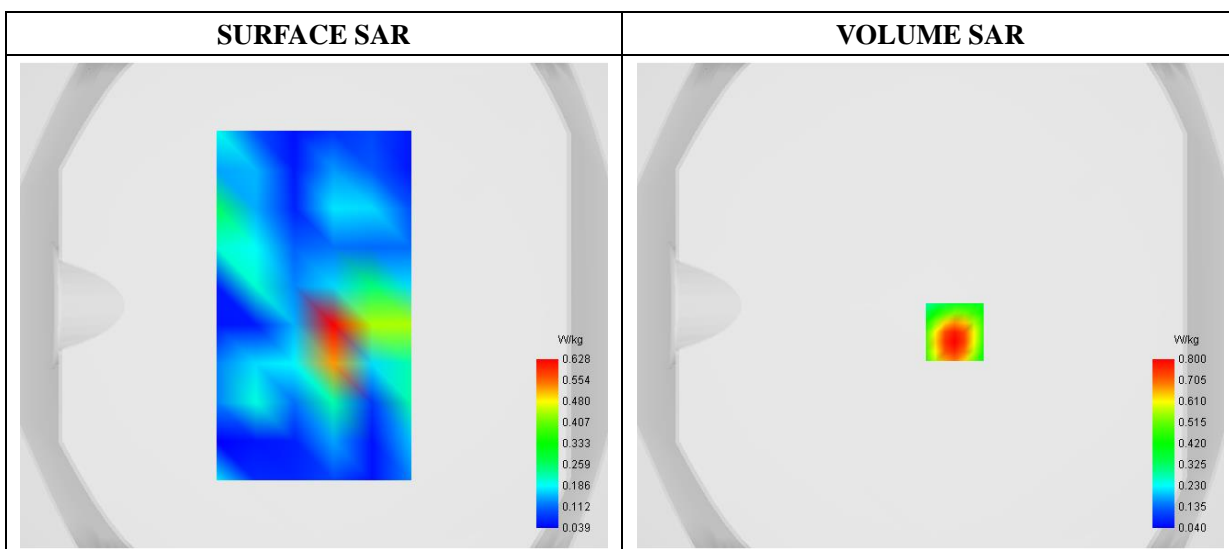
A. Experimental conditions

Area Scan	dx=8mm dy=8mm
Phantom	Flat Plane
Device Position	Back
Band	U-NIII-3 _802.11a
Channels	High
Signal	Duty Cycle: 1:1

B. SAR Measurement Results

Frequency (MHz)	5825.000000
Relative Permittivity (real part)	34.622273
Conductivity (S/m)	5.230836
Power Variation (%)	1.330000
Ambient Temperature	22.3
Liquid Temperature	22.3

C. SAR Surface and Volume



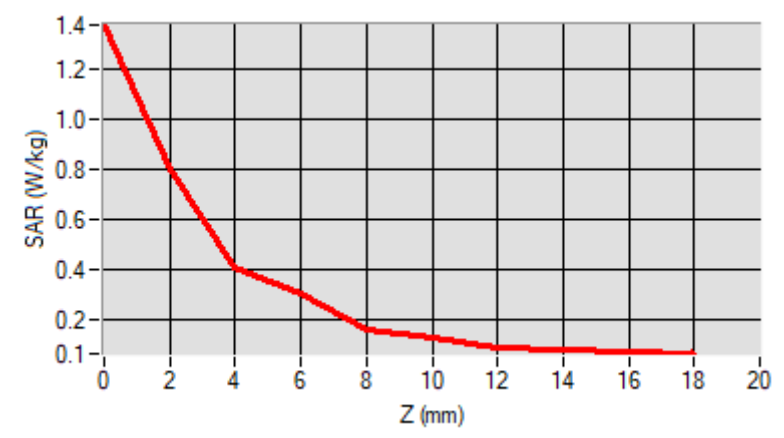
Maximum location: X=10.00, Y=-11.00

D. SAR 1g & 10g

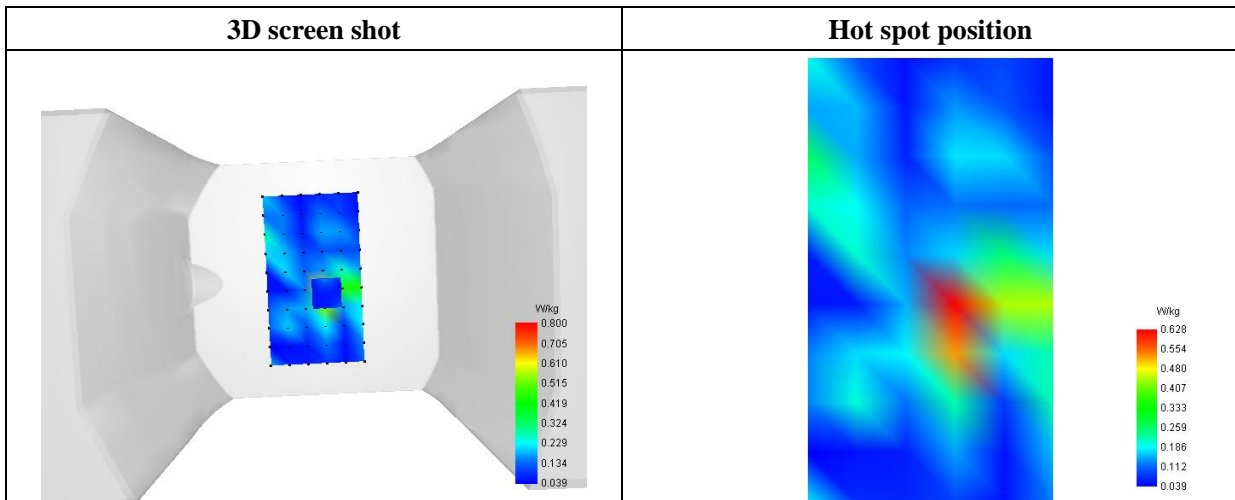
SAR 10g (W/Kg)	0.231305
SAR 1g (W/Kg)	0.316503

E. Z Axis Scan

Z (mm)	0.00	2.00	4.00	6.00	8.00	10.00	12.00	14.00	16.00
SAR (W/Kg)	1.3787	0.8004	0.4096	0.2991	0.1587	0.1263	0.0886	0.0751	0.0663



F. 3D Image



Annex C. EUT Photos

EUT View 1



EUT View 2



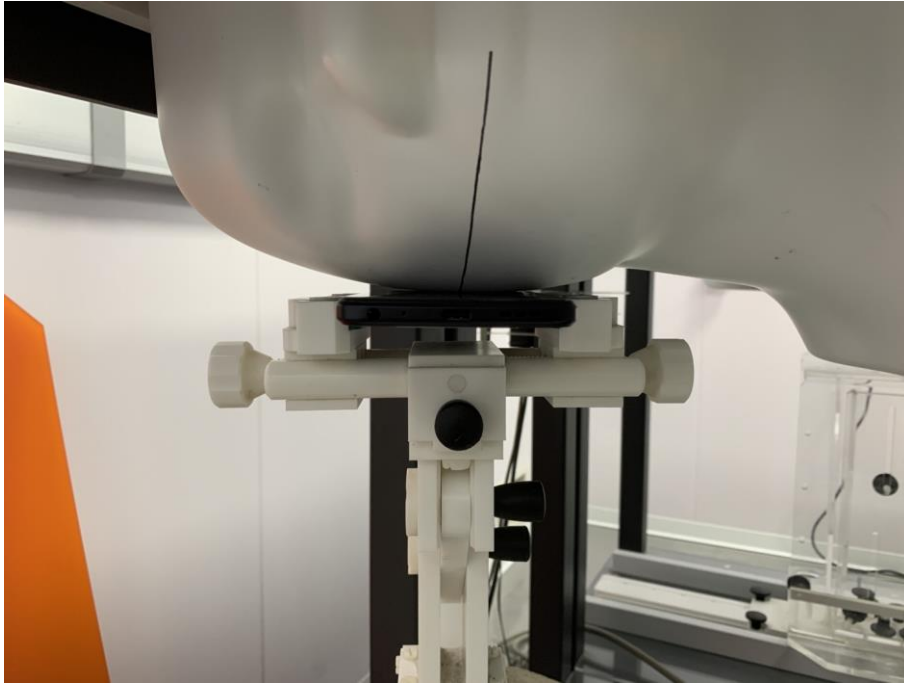
Antenna View



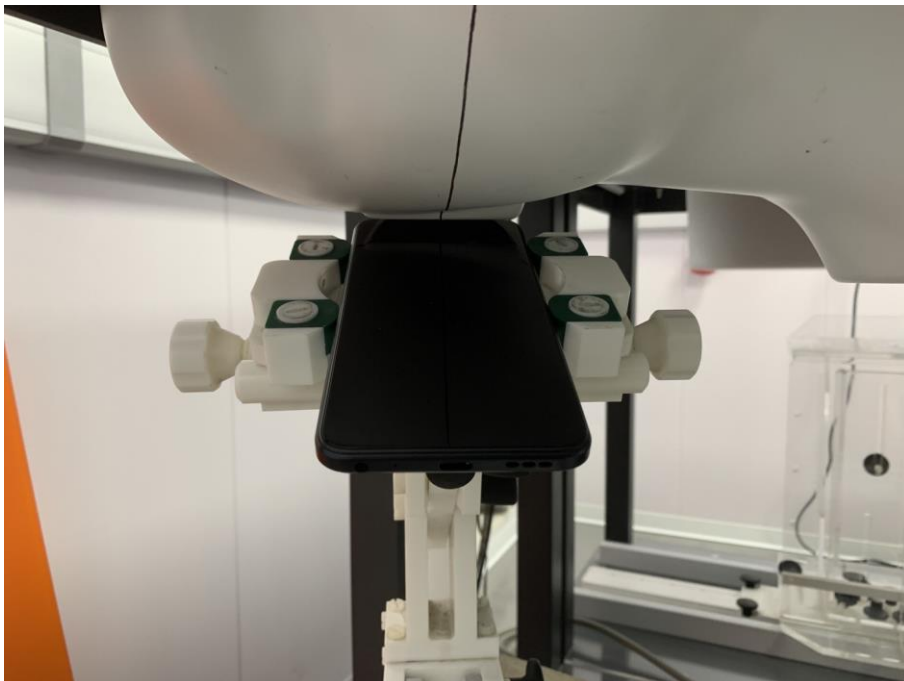
Annex D. Test Setup Photos

Head Exposure Conditions

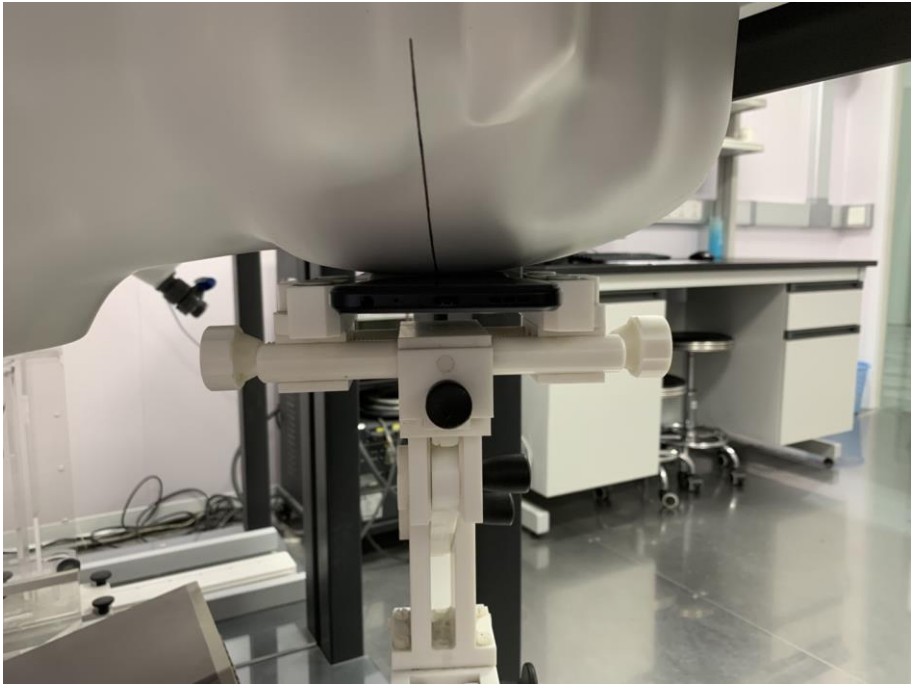
Right Cheek



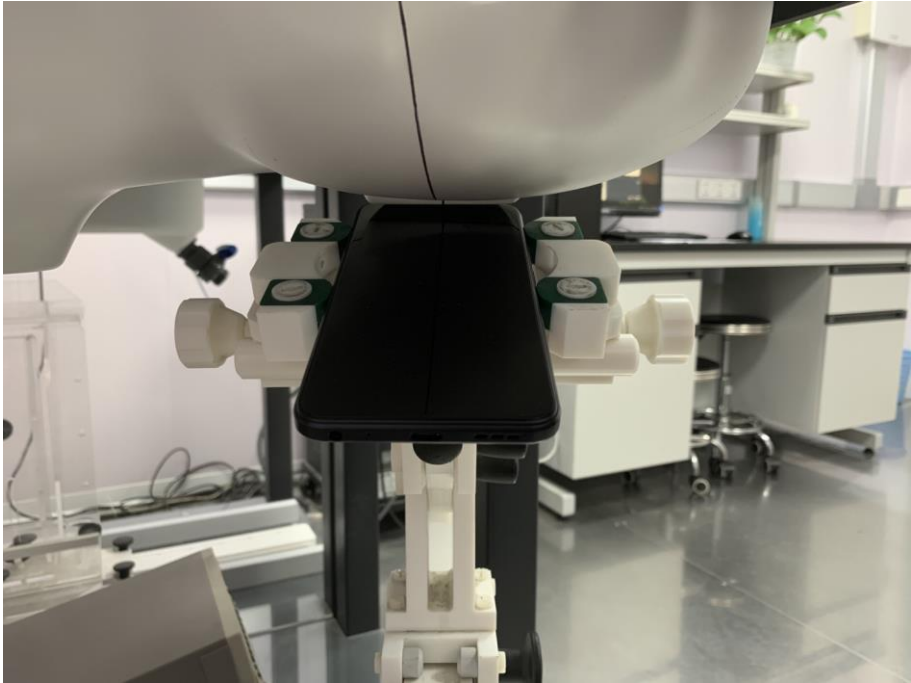
Right Tilt



Left Cheek



Left Tilt

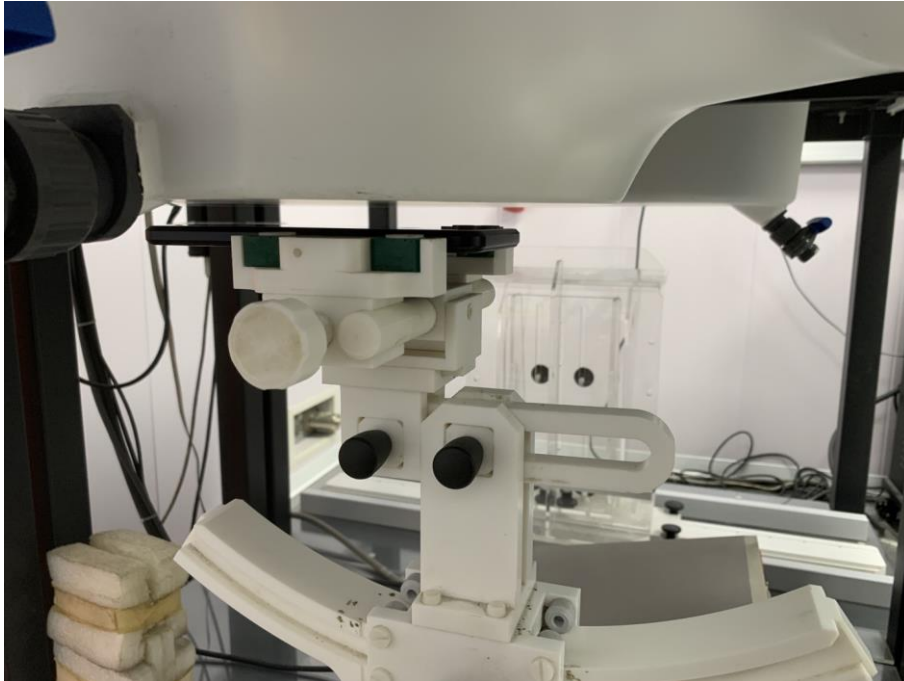


Body mode Exposure Conditions
Test distance: 10mm

Body Front



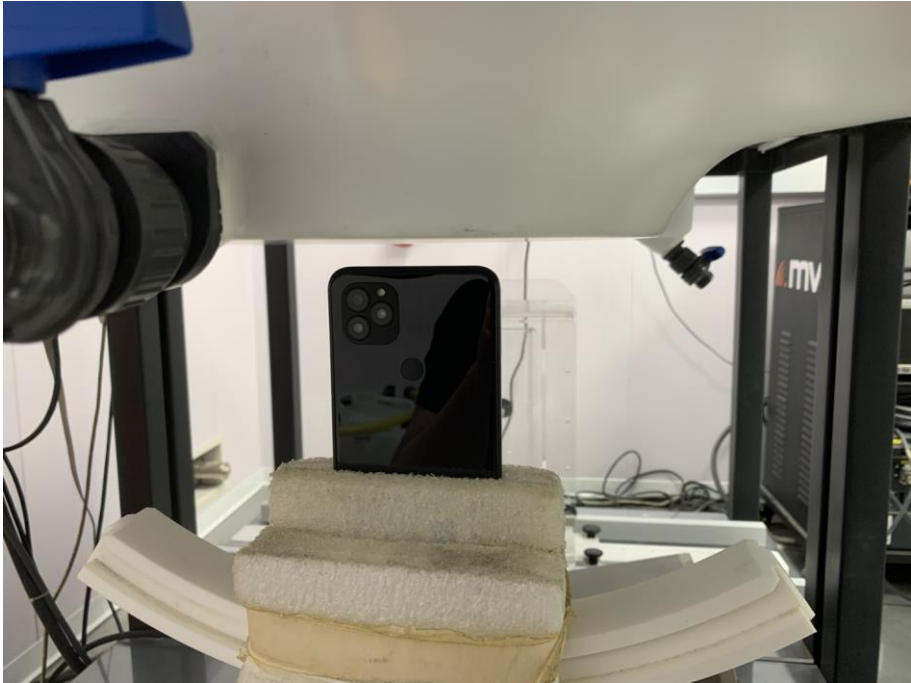
Body Back



Body Right



Body Top



Annex E. Calibration Certificate

Please refer to the exhibit for the calibration certificate

******* END OF REPORT *******