

SAR TEST REPORT

Reference No. : WTD21D02013800W001 V1
FCC ID..... : 2AEPIELEMENTPLAY
Applicant : COLOMBIANA DE COMERCIO S.A.
Address : Car. 43E No 8-71, Medellin, Colombia
Manufacturer : MOBIWIRE MOBILES (NINGBO) CO.,LTD
Address : Ningbo Fenghua No.999, Dacheng East Road, Fenghua, Zhejiang, China
Product : SMARTPHONE
Model(s)..... : ELEMENT PLAY
Brand Name. : Kalley
Standards : FCC 47 CFR Part2(2.1093)
: ANSI/IEEE C95.1
: IEEE 1528 & Published RF Exposure KDB Procedures
Date of Receipt sample : 2021-03-01
Date of Test..... : 2021-03-02 to 2021-03-09
Date of Issue : 2021-04-16
Test Result : Pass

Remarks:

The results shown in this test report refer only to the sample(s) tested, this test report cannot be reproduced, except in full, without prior written permission of the company. The report would be invalid without specific stamp of test institute and the signatures of compiler and approver.

Prepared By:

Waltek Testing Group Co., Ltd.

Address: No. 77, Houjie Section, Guantai Road, Houjie Town, Dongguan City, Guangdong, China
Tel: +86-769-2267 6998
Fax: +86-769-2267 6828

Compiled by:



Andy Feng / Project Engineer

Approved by:



Daniel Liu / Designated Reviewer

2 Contents

	Page
1 COVER PAGE	1
2 CONTENTS	2
3 REVISION HISTORY	3
4 GENERAL INFORMATION	4
4.1 GENERAL DESCRIPTION OF E.U.T.	4
4.2 DETAILS OF E.U.T.	4
4.3 TEST FACILITY	5
5 EQUIPMENT USED DURING TEST	6
5.1 EQUIPMENT LIST	6
5.2 TEST EQUIPMENT CALIBRATION	6
6 SAR INTRODUCTION.....	7
6.1 INTRODUCTION	7
6.2 SAR DEFINITION.....	7
7 SAR MEASUREMENT SETUP.....	8
8 EXPOSURE LIMIT	17
9 SYSTEM AND LIQUID VALIDATION	18
9.1 SYSTEM VALIDATION	18
9.2 LIQUID VALIDATION	20
10 TYPE A MEASUREMENT UNCERTAINTY	29
11 OUTPUT POWER VERIFICATION.....	32
12 EXPOSURE CONDITIONS CONSIDERATION	37
13 SAR TEST RESULTS	39
14 SAR MEASUREMENT REFERENCE.....	49
MAXIMUM SAR MEASUREMENT PLOTS.....	50
15 CALIBRATION REPORTS-PROBE AND DIPOLE	60
16 SAR SYSTEM PHOTOS	102
17 SETUP PHOTOS	103
18 EUT PHOTOS	105

3 Revision History

Test report No.	Date of Receipt sample	Date of Test	Date of Issue	Purpose	Comment	Approved
WTD21D02013 800W001	2021-03-01	2021-03-02 to 2021-03-09	2021-03-10	original	-	Replaced
WTD21D02013 800W001 V1	2021-03-01	2021-03-02 to 2021-03-09	2021-04-16	Version 1	Updated	Valid

4 General Information

4.1 General Description of E.U.T.

Product:	SMARTPHONE
Model(s):	ELEMENT PLAY
Model Description:	N/A
GSM Band(s):	GSM 850/900/1800/1900MHz
GPRS Class:	12
WCDMA Band(s):	FDD Band II/V
Wi-Fi Specification:	2.4G-802.11b/g/n HT20
Bluetooth Version:	Bluetooth v5.0 with BLE
GPS:	Support
NFC:	N/A
Hardware Version:	V01A
Software Version:	Kalley_ELEMENT_PLAY_V02_20210120
Highest frequency (Exclude Radio):	1.3GHz
Storage Location:	Internal Storage
Note:	N/A

4.2 Details of E.U.T.

Operation Frequency:	GSM/GPRS 850: 824~849MHz PCS/GPRS 1900: 1850~1910MHz WCDMA Band II: 1850~1910MHz WCDMA Band V: 824~849MHz WiFi: 802.11b/g/n HT20: 2412~2462MHz Bluetooth: 2402~2480MHz
Max. RF output power:	GSM 850: 33.00dBm PCS1900: 29.50dBm WCDMA Band II: 22.71dBm WCDMA Band V: 22.94dBm WiFi(2.4G): 15.98dBm Bluetooth: 7.87dBm BLE: 7.56dBm
Max.SAR:	0.61 W/Kg 1g Head Tissue 1.08 W/Kg 1g Body Tissue 1.08 W/Kg 1g Hotspot
Max Simultaneous SAR	1.21 W/Kg

Type of Modulation:	GSM,GPRS: GMSK WCDMA: BPSK WiFi: CCK, OFDM Bluetooth: GFSK, Pi/4 DQPSK,8DPSK
Antenna installation	GSM/WCDMA: internal permanent antenna WiFi/Bluetooth: internal permanent antenna
Antenna Gain:	GSM 850: -2.5dBi PCS1900: -0.5dBi WCDMA Band II: -0.5dBi WCDMA Band V: -2.5dBi WiFi(2.4G): -3.0dBi Bluetooth: -3.0dBi
Ratings:	Battery DC 3.8V, 2950mAh DC 5V, 1.0A, charging from adapter (Adapter Input: 100-240V~50/60Hz 0.2A)
Adapter:	Manufacturer: Dongguan Aohai Power Technology Co.,Ltd Model No.: A18A-050100U-US2

4.3 Test Facility

The test facility has a test site registered with the following organizations:

ISED CAB identifier: CN0013. Test Firm Registration No.: 7760A.

Waltek Testing Group Co., Ltd. Has been registered and fully described in a report filed with the Industry Canada. The acceptance letter from the Industry Canada is maintained in our files.

Registration number 7760A, October 15, 2016.

FCC Designation No.: CN1201. Test Firm Registration No.: 523476.

Waltek Testing Group Co., Ltd. EMC Laboratory has been registered and fully described in a report filed with the (FCC) Federal Communications Commission. The acceptance letter from the FCC is maintained in our files. Registration number 523476, September 10, 2019.

5 Equipment Used during Test

5.1 Equipment List

Name of Equipment	Manufacturer	Type/Model	Serial Number	Calibration Date	Calibration Due
6 AXIS ROBOT	KUKA	KR6 R900 SIXX	502635	N/A	N/A
SATIMO Test Software	MVG	OPENSAR	OPENSAR V_4_02_27	N/A	N/A
PHANTOM TABLE	MVG	N/A	SAR_1215_01	N/A	N/A
SAM PHANTOM	MVG	SAM118	SN 11/15 SAM118	N/A	N/A
MultiMeter	Keithley	MiltiMeter 2000	4073942	2021-02-26	2022-02-25
Data Acquisition Electronics	MVG	DAE4	915	2021-02-26	2022-02-25
S-Parameter Network Analyzer	Agilent	8753E	JP38160684	2020-09-17	2021-09-16
Universal Radio Communication Tester	ROHDE&SCHWARZ	CMU200	112461	2020-09-17	2021-09-16
Wideband Radio Communication Tester	ROHDE&SCHWARZ	CMW500	/	2020-09-17	2021-09-16
E-Field Probe	MVG	SSE5	SN 07/15 EP247	2020-08-29	2021-08-28
DIPOLE 835	MVG	SID835	SN 09/15 DIP 0G835-358	2020-08-29	2021-08-28
DIPOLE 1900	MVG	SID1900	SN 09/15 DIP 1G900-361	2020-08-29	2021-08-28
Limesar Dielectric Probe	MVG	SCLMP	SN 11/15 OCPG 69	2021-02-27	2022-02-27
Power Amplifier	BONN	BLWA 0830 -160/100/40D	128740	2020-09-17	2021-09-16
Signal Generator	R&S	SMB100A	105942	2020-09-17	2021-09-16
Power Meter	R&S	NRP2	102031	2020-09-17	2021-09-16
Power Meter	R&S	NRVD	102284	2020-09-17	2021-09-16
USB Wideband Power Sensor	Malaysia Keysight	U2021XA	MY54340009	2020-04-19	2021-04-18
USB Wideband Power Sensor	Malaysia Keysight	U2021XA	MY54340010	2020-04-19	2021-04-18

5.2 Test Equipment Calibration

All the test equipments used are valid and calibrated by CEPREI Certification Body that address is No.110 Dongguan Zhuang RD. Guangzhou, P.R.China

6 SAR Introduction

6.1 Introduction

This measurement report shows compliance of the EUT with ANSI/IEEE C95.1-2006 and FCC 47 CFR Part2 (2.1093).The test procedures, as described in IEEE 1528-2013 Standard for IEEE Recommended Practice for Determining the Peak Spatial-Average Specific Absorption Rate (SAR) in the Human Head from Wireless Communications Devices: Measurement Techniques(300MHz~6GHz) and Published RF Exposure KDB Procedures

6.2 SAR Definition

- ✘ SAR : Specific Absorption Rate
- ✘ The SAR characterize the absorption of energy by a quantity of tissue
- ✘ This is related to a increase of the temperature of these tissues during a time period.

$$DAS = \frac{d}{dt} \left(\frac{dW}{dm} \right) = \frac{d}{dt} \left(\frac{dW}{\rho dV} \right)$$

$$DAS = \frac{\sigma E^2}{\rho}$$

$$DAS = c_h \left. \frac{dT}{dt} \right|_{t=0}$$

SAR definition

$$SAR = \frac{\sigma E^2}{\rho}$$

- ✘ SAR : Specific Absorption Rate

- σ : Liquid conductivity

- $\epsilon_r = \epsilon' - j\epsilon''$ (complex permittivity of liquid)

- $\sigma = \frac{\epsilon'' \omega}{\epsilon_0}$

- ρ : Liquid density

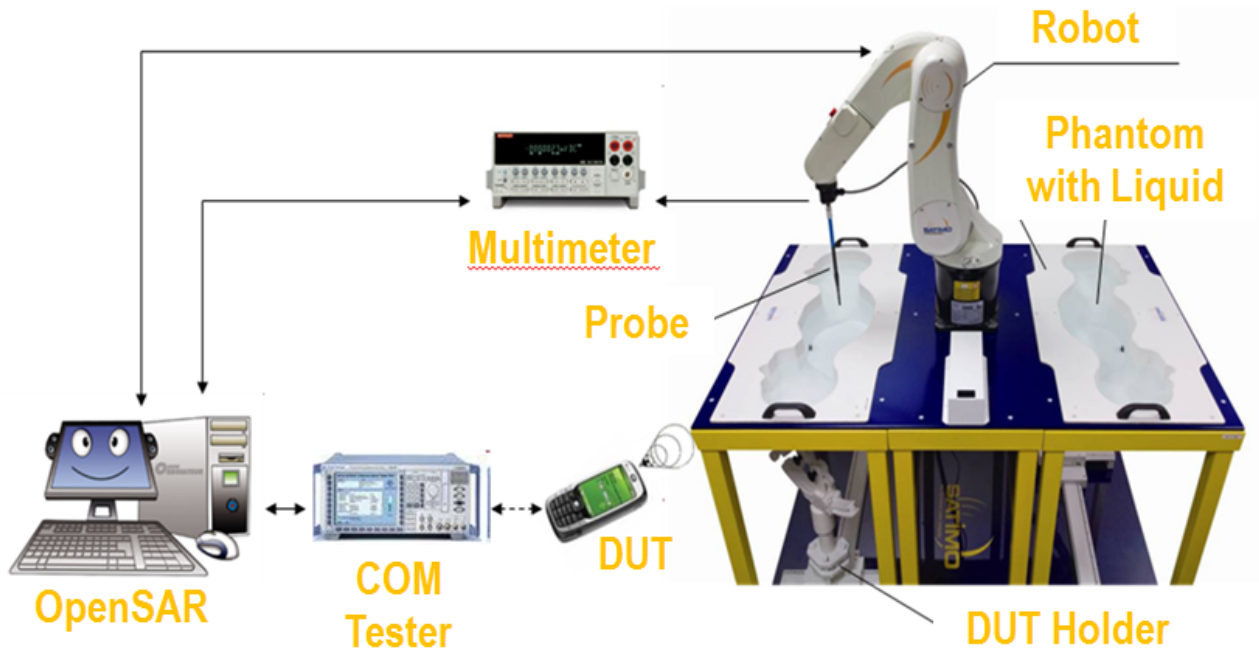
- $\rho = 1000 \text{ g/L} = 1000 \text{ Kg/m}^3$

where:

- σ = conductivity of the tissue (S/m)
- ρ = mass density of the tissue (kg/m³)
- E = rms electric field strength (V/m)

7 SAR Measurement Setup

SAR bench sub-systems



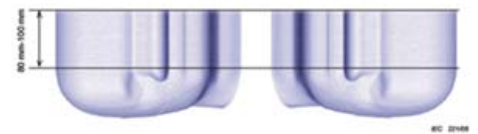
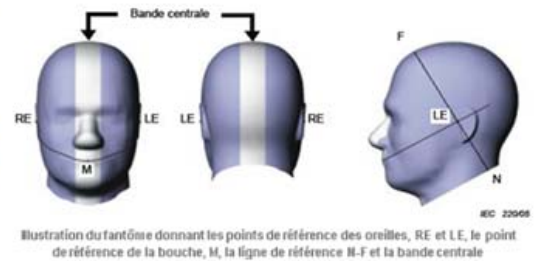
Scanning System (robot)

- ❑ It must be able to scan all the volume of the phantom to evaluate the tridimensional distribution of SAR.
- ❑ Must be able to set the probe orthogonal of the surface of the phantom ($\pm 30^\circ$).
- ❑ Detects stresses on the probe and stop itself if necessary to keep the integrity of the probe.

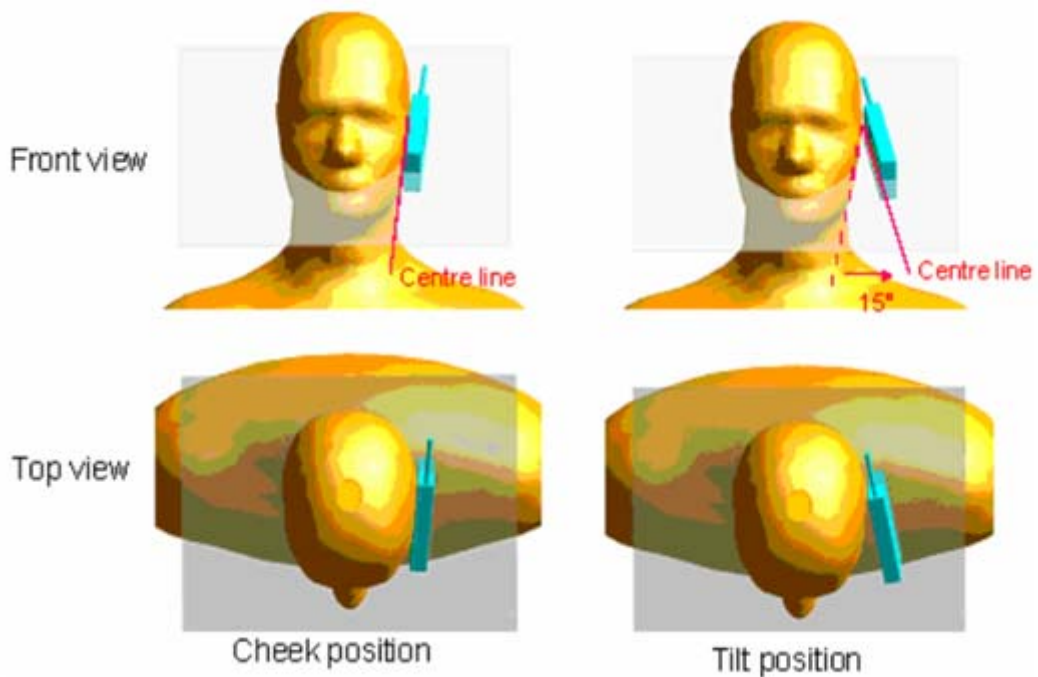


SAM Phantom (Specific Anthropomorphic Mannequin)

- ▶ The probe scanning of the E-Field is done in the 2 half of the normalized head.
- ▶ The normalized shape of the phantom corresponds to the dimensions of 90% of an adult head size.
- ▶ The materials for the phantom should not affect the radiation of the device under test (DUT)
 - Permittivity < 5
- ▶ The head is filled with tissue simulating liquid.
- ▶ The hand holding the DUT does not have to be modeled.



Bi-section sagittale du fantôme avec périmètre étendu (montrée sur le côté comme lors des essais de DAS de l'appareil)



The OPENSAR system for performing compliance tests consist of the following items:

1. A standard high precision 6-axis robot (KUKA) with controller and software.
2. KUKA Control Panel (KCP).
3. A dosimetric probe, i.e., an isotropic E-field probe optimized and calibrated for usage in tissue simulating liquid. The probe is equipped with an optical surface detector system.
4. The functions of the PC plug-in card are to perform the time critical task such as signal filtering, surveillance of the robot operation fast movement interrupts.
5. A computer operating Windows 7.
6. OPENSAR software.
7. Remote control with teaches pendant and additional circuitry for robot safety such as warning lamps, etc.
8. The SAM phantom enabling testing left-hand right-hand and body usage.
9. The Position device for handheld EUT.
10. Tissue simulating liquid mixed according to the given recipes (see Application Note).
11. System validation dipoles to validate the proper functioning of the system.

Data Evaluation

The OPENSAR software automatically executes the following procedure to calculate the field units from the microvolt readings at the probe connector. The parameters used in the valuation are stored in the configuration modules of the software:

Probe Parameters	- Sensitivity	Norm _i
	- Conversion factor	ConvFi
	- Diode compression point Dcpi	
Device Parameter	- Frequency	f
	- Crest factor	cf
Media Parametrs	- Conductivity	σ
	- Density	ρ

These parameters must be set correctly in the software. They can either be found in the component documents or be imported into the software from the configuration files issued for the OPENSAR components.

The first step of the evaluation is a linearization of the filtered input signal to account for the compression characteristics of the detector diode. The compensation depends on the input signal, the diode type and the DC-transmission factor from the diode to the evaluation electronics. If the exciting field is pulsed, the crest factor of the signal must be known to correctly compensate for peak power. The formula for each channel can be given as

$$V_i = U_i + U_i^2 \cdot \frac{cf}{dcp_i}$$

Where V_i = Compensated signal of channel i ($i = x, y, z$)

U_i = Input signal of channel i ($i = x, y, z$)

cf = Crest factor of exciting field (DASY parameter)

dcp_i = Diode compression point (DASY parameter)

From the compensated input signals the primary field data for each channel can be evaluated:

$$E\text{-field probes: } E_i = \sqrt{\frac{V_i}{Norm_i \cdot ConvF}}$$

$$H\text{-field probes: } H_i = \sqrt{V_i} \cdot \frac{a_{i0} + a_{i1}f + a_{i2}f^2}{f}$$

Where V_i = Compensated signal of channel i ($i = x, y, z$)

$Norm_i$ = Sensor sensitivity of channel i ($i = x, y, z$)
μV/(V/m)² for E0field Probes

$ConvF$ = Sensitivity enhancement in solution

a_{ij} = Sensor sensitivity factors for H-field probes

- f = Carrier frequency (GHz)
 E_i = Electric field strength of channel i in V/m
 H_i = Magnetic field strength of channel i in A/m

The RSS value of the field components gives the total field strength (Hermitian magnitude):

$$E_{\text{tot}} = \sqrt{E_x^2 + E_y^2 + E_z^2}$$

The primary field data are used to calculate the derived field units.

$$SAR = E_{\text{tot}}^2 \cdot \frac{\sigma}{\rho \cdot 1000}$$

- where SAR = local specific absorption rate in mW/g
 E_{tot} = total field strength in V/m
 σ = conductivity in [mho/m] or [siemens/m]
 ρ = equivalent tissue density in g/cm³

Note that the density is normally set to 1 (or 1.06), to account for actual brain density rather than the density of the simulation liquid.

The power flow density is calculated assuming the excitation field as a free space field.

$$P_{\text{pwe}} = \frac{E_{\text{tot}}^2}{3770} \quad \text{or} \quad P_{\text{pwe}} = H_{\text{tot}}^2 \cdot 37.7$$

- where P_{pwe} = Equivalent power density of a plane wave in mW/cm²
 E_{tot} = total electric field strength in V/m
 H_{tot} = total magnetic field strength in A/m

SAR Evaluation – Peak Spatial - Average

The procedure for assessing the peak spatial-average SAR value consists of the following steps

- **Power Reference Measurement**

The reference and drift jobs are useful jobs for monitoring the power drift of the device under test in the batch process. Both jobs measure the field at a specified reference position, at a selectable distance from the phantom surface. The reference position can be either the selected section's grid reference point or a user point in this section. The reference job projects the selected point onto the phantom surface, orients the probe perpendicularly to the surface, and approaches the surface using the selected detection method.

- **Area Scan**

The area scan is used as a fast scan in two dimensions to find the area of high field values, before doing a finer measurement around the hot spot. The sophisticated interpolation routines implemented in OPENSAR software can find the maximum locations even in relatively coarse grids. The scan area is defined by an editable grid.

This grid is anchored at the grid reference point of the selected section in the phantom.

When the area scan's property sheet is brought-up, grid was at to 15 mm by 15 mm and can be edited by a user.

- **Zoom Scan**

Zoom scans are used to assess the peak spatial SAR values within a cubic averaging volume containing 1 g and 10 g of simulated tissue. The default zoom scan measures 5 x 5 x 7 points within a cube whose base faces are centered around the maximum found in a preceding area scan job within the same procedure. If the preceding Area Scan job indicates more than one maximum, the number of Zoom Scans has to be enlarged accordingly (The default number inserted is 1).

- **Power Drift measurement**

The drift job measures the field at the same location as the most recent reference job within the same procedure, and with the same settings. The drift measurement gives the field difference in dB from the reading conducted within the last reference measurement. Several drift measurements are possible for one reference measurement. This allows a user to monitor the power drift of the device under test within a batch process. In the properties of the Drift job, the user can specify a limit for the drift and have OPENSAR software stop the measurements if this limit is exceeded.

SAR Evaluation – Peak SAR

The procedure for spatial peak SAR evaluation has been implemented according to the IEEE1528 standard. It can be conducted for 1 g and 10 g. The OPENSAR system allows evaluations that combine measured data and robot positions, such as:

- maximum search
- extrapolation
- boundary correction
- peak search for averaged SAR

During a maximum search, global and local maximum searches are automatically performed in 2-D after each Area Scan measurement with at least 6 measurement points. It is based on the evaluation of the local SAR gradient calculated by the Quadratic Shepard's method. The algorithm will find the global maximum and all local maxima within -2 dB of the global maxima for all SAR distributions.

Extrapolation

Extrapolation routines are used to obtain SAR values between the lowest measurement points and the inner phantom surface. The extrapolation distance is determined by the surface detection distance and the probe sensor offset. Several measurements at different distances are necessary for the extrapolation. They are used in the Cube Scan to obtain SAR values between the lowest measurement points and the inner phantom surface. The routine uses the fourth order least square polynomial method for extrapolation. For a grid using 5x5x7 measurement points with 5mm resolution amounting to 343 measurement points, the uncertainty of the extrapolation routines is less than 1% for 1 g and 10 g cubes.

Definition of Reference Points

Ear Reference Point

Figure 6.2 shows the front, back and side views of the SAM Phantom. The point “M” is the reference point for the center of the mouth, “LE” is the left ear reference point (ERP), and “RE” is the right ERP. The ERPs are 15mm posterior to the entrance to the ear canal (EEC) along the B-M line (Back-Mouth), as shown in Figure 6.1. The plane passing through the two ear canals and M is defined as the Reference Plane. The line N-F (Neck-Front) is perpendicular to the reference plane and passing through the RE (or LE) is called the Reference Pivoting Line (see Figure 6.1). Line B-M is perpendicular to the N-F line. Both N-F and B-M lines are marked on the external phantom shell to facilitate handset positioning [5].

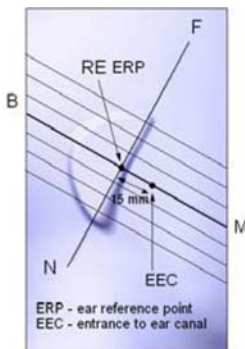


Figure 6.1 Close-up side view of ERP's



Figure 6.2 Front, back and side view of SAM

Device Reference Points

Two imaginary lines on the device need to be established: the vertical centerline and the horizontal line. The test device is placed in a normal operating position with the “test device reference point” located along the “vertical centerline” on the front of the device aligned to the “ear reference point” (See Fig. 6.3). The “test device reference point” is then located at the same level as the center of the ear reference point. The test device is positioned so that the “vertical centerline” is bisecting the front surface of the device at its top and bottom edges, positioning the “ear reference point” on the outer surface of both the left and right head phantoms on the ear reference point [5].

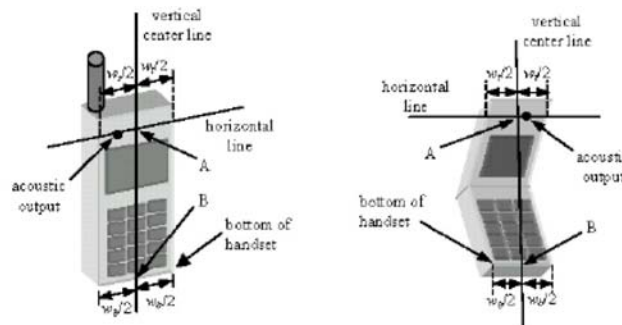


Figure 6.3 Handset Vertical Center & Horizontal Line Reference Points

Test Configuration – Positioning for Cheek / Touch

1. Position the device close to the surface of the phantom such that point A is on the (virtual) extension of the line passing through points RE and LE on the phantom (see Figure below), such that the plane defined by the vertical center line and the horizontal line of the device is approximately parallel to the sagittal plane of the phantom

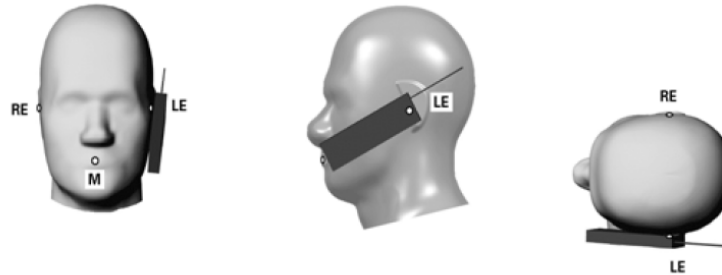


Figure 7.1 Front, Side and Top View of Cheek/Touch Position

2. Translate the device towards the phantom along the line passing through RE and LE until the device touches the ear.
3. While maintaining the device in this plane, rotate it around the LE-RE line until the vertical centerline is in the plane normal to MB-NF including the line MB (called the reference plane).
4. Rotate the device around the vertical centerline until the device (horizontal line) is symmetrical with respect to the line NF.
5. While maintaining the vertical centerline in the reference plane, keeping point A on the line passing through RE and LE and maintaining the device contact with the ear, rotate the device about the line NF until any point on the device is in contact with a phantom point below the ear (cheek). See Figure below.

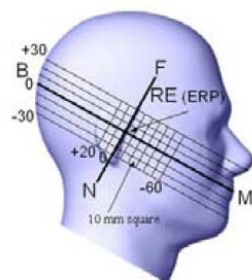


Figure 7.2 Side view w/ relevant markings

Test Configuration – Positioning for Ear / 15° Tilt

With the test device aligned in the Cheek/Touch Position”:

1. While maintaining the orientation of the device, retracted the device parallel to the reference plane far enough to enable a rotation of the device by 15 degrees.
2. Rotate the device around the horizontal line by 15 degrees.
3. While maintaining the orientation of the device, move the device parallel to the reference plane until any part of the device touches the head. (In this position, point A is located on the line RE-LE). The tilted position is obtained when the contact is on the pinna. If the contact is at any location other than the pinna, the angle of the device shall be reduced. The tilted position is obtained when any part of the device is in contact with the ear as well as a second part of the device is in contact with the head (see Figure below).

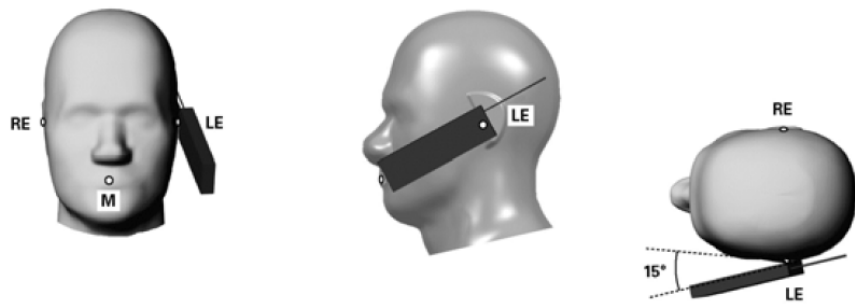
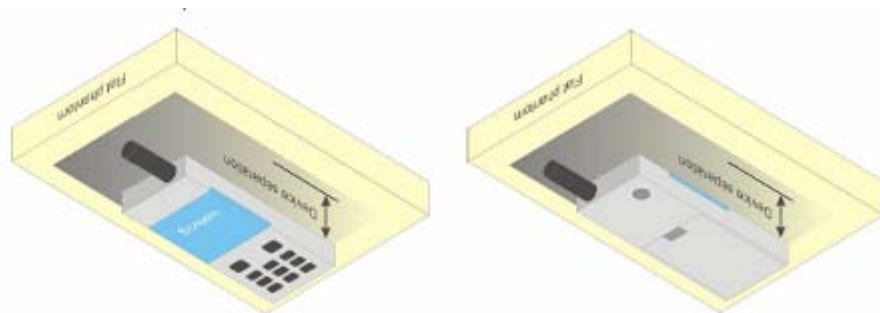


Figure 7.3 Front, Side and Top View of Ear/15° Tilt Position

Test Position – Body Configurations

Body Worn Position

- (a) To position the device parallel to the phantom surface with either keypad up or down.
- (b) To adjust the device parallel to the flat phantom.
- (c) To adjust the distance between the device surface and the flat phantom to 1.0 cm or holster surface and the flat phantom to 0 cm.



8 Exposure limit

In order for users to be aware of the body-worn operating requirements for meeting RF exposure compliance, operating instructions and cautions statements are included in the user's manual.

Uncontrolled Environment

Uncontrolled Environments are defined as locations where there is the exposure of individuals who have no knowledge or control of their exposure. The general population/uncontrolled exposure limits are applicable to situations in which the general public may be exposed or in which persons who are exposed as a consequence of their employment may not be made fully aware of the potential for exposure or cannot exercise control over their exposure. Members of the general public would come under this category when exposure is not employment-related; for example, in the case of a wireless transmitter that exposes persons in its vicinity.

Controlled Environment

Controlled Environments are defined as locations where there is exposure that may be incurred by persons who are aware of the potential for exposure, (i.e. as a result of employment or occupation). In general, occupational/controlled exposure limits are applicable to situations in which persons are exposed as a consequence of their employment, who have been made fully aware of the potential for exposure and can exercise control over their exposure. This exposure category is also applicable when the exposure is of a transient nature due to incidental passage through a location where the exposure levels may be higher than the general population/uncontrolled limits, but the exposed person is fully aware of the potential for exposure and can exercise control over his or her exposure by leaving the area or by some other appropriate means.

Table 8.1 Human Exposure Limits

	UNCONTROLLED ENVIRONMENT General Population (W/kg) or (mW/g)	CONTROLLED ENVIROMENT Professional Population (W/kg) or (mW/g)
SPATIAL PEAK SAR ¹ Brain	1.60	8.00
SPATIAL AVERAGE SAR ² Whole Body	0.08	0.40
SPATIAL PEAK SAR ³ Hands, Feet, Ankles, Wrists	4.00	20.00

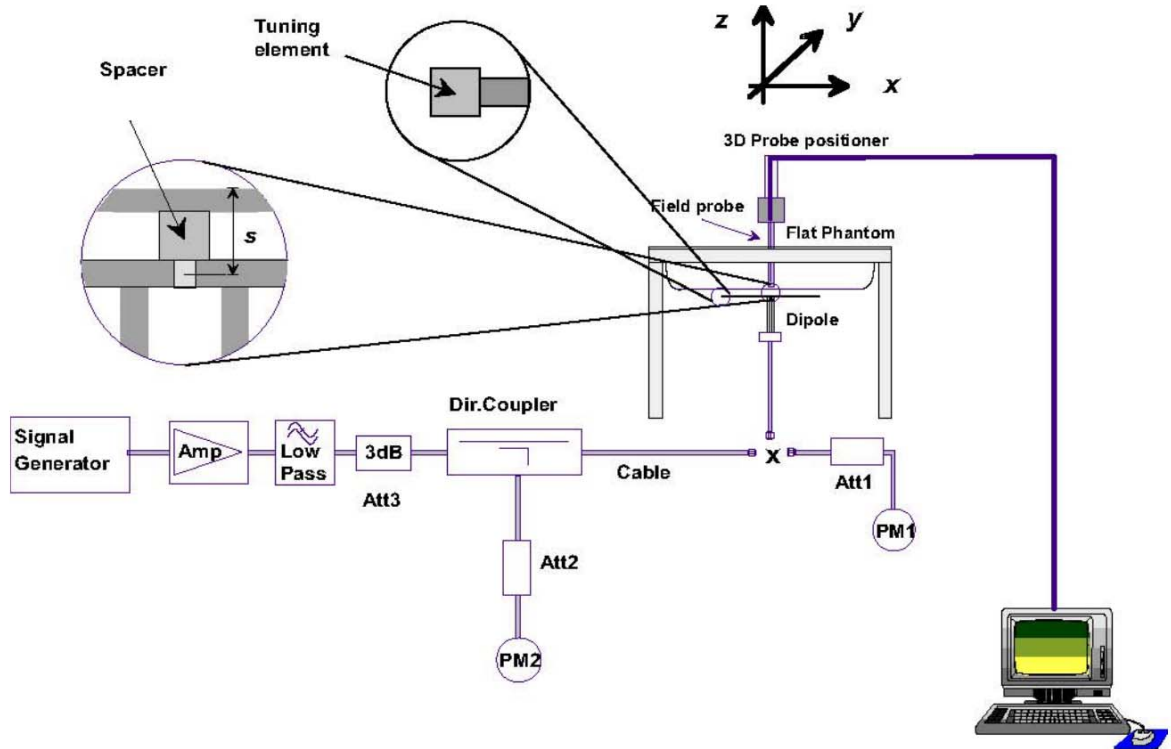
¹ The Spatial Peak value of the SAR averaged over any 1 gram of tissue (defined as a tissue volume in the shape of a cube) and over the appropriate averaging time.

² The Spatial Average value of the SAR averaged over the whole body.

³ The Spatial Peak value of the SAR averaged over any 10 grams of tissue (defined as a tissue volume in the shape of a cube) and over the appropriate averaging time.

9 System and liquid validation

9.1 System validation



The system performance check verifies that the system operates within its specifications. System and operator errors can be detected and corrected. It is recommended that the system performance check be performed prior to any usage of the system in order to guarantee reproducible results. The system performance check uses normal SAR measurements in a simplified setup with a well characterized source. This setup was selected to give a high sensitivity to all parameters that might fail or vary over time. The system check does not intend to replace the calibration of the components, but indicates situations where the system uncertainty is exceeded due to drift or failure.

In the simplified setup for system evaluation, the DUT is replaced by a calibrated dipole and the power source is replaced by a continuous wave that comes from a signal generator. The calibrated dipole must be placed beneath the flat phantom section of the SAM twin phantom with the correct distance holder. The distance holder should touch the phantom surface with a light pressure at the reference marking and be oriented parallel to the long side of the phantom. The equipment setup is shown below:

1. Signal Generator
2. Amplifier
3. Directional Coupler
4. Power Meter
5. Calibrated Dipole

The output power on dipole port must be calibrated to 30 dBm (1000 mW) before dipole is connected.

Numerical reference SAR values (W/kg) for reference dipole and flat phantom

Frequency (MHz)	1g SAR	10g SAR	Local SAR at surface(above feed-point)	Local SAR at surface(y = 2 cm offset from feedpoint)
300	3.02	2.04	4.40	2.10
450	4.92	3.28	7.20	3.20
750	8.49	5.55	12.6	4.59
835	9.56	6.22	14.1	4.90
900	10.9	6.99	16.4	5.40
1450	29.0	16.0	50.2	6.50
1800	38.4	20.1	69.5	6.80
1900	39.7	20.5	72.1	6.60
2000	41.1	21.1	74.6	6.50
2450	52.4	24.0	104	7.70
2600	55.3	24.6	113	8.29
3000	63.8	25.7	140	9.50

Table 1: system validation (1g)

Measurement Date	Frequency (MHz)	Liquid Type (head/body)	1W Target SAR1g (W/kg)	Measured SAR1g (W/kg)	1W Normalized SAR1g (W/kg)	Deviation ($\pm 10\%$)
2021-03-02	835	head	9.58	0.957	9.57	-0.1
2021-03-02	835	body	9.78	1.035	10.35	5.8
2021-03-09	1900	head	39.49	3.990	39.90	1.0
2021-03-09	1900	body	40.01	3.896	38.96	-2.6
2021-03-06	2450	head	54.31	5.547	55.47	-7.7
2021-03-06	2450	body	53.67	5.265	52.65	-3.3

Note: system check input power: 100mW

9.2 liquid validation

The dielectric parameters were checked prior to assessment using the HP85070C dielectric probe kit. The dielectric parameters measured are reported in each correspondent section.

KDB 865664 recommended Tissue Dielectric Parameters

The head and body tissue parameters given in this below table should be used to measure the SAR of transmitters operating in 100 MHz to 6 GHz frequency range. The tissue dielectric parameters of the tissue medium at the test frequency should be within the tolerance required in this document. The dielectric parameters should be linearly interpolated between the closest pair of target frequencies to determine the applicable dielectric parameters corresponding to the device test frequency.

The head tissue dielectric parameters recommended by IEEE Std 1528-2013 have been incorporated in the following table. These head parameters are derived from planar layer models simulating the highest expected SAR for the dielectric properties and tissue thickness variations in a human head. Other head and body tissue parameters that have not been specified in 1528 are derived from tissue dielectric parameters computed from the 4-Cole-Cole equations described above and extrapolated according to the head parameters specified in 1528.

Target Frequency	Head Tissue		Body Tissue	
	MHz	ϵ_r	σ (S/m)	ϵ_r
150	52.3	0.76	61.9	0.80
300	45.3	0.87	58.2	0.92
450	43.5	0.87	56.7	0.94
835	41.5	0.90	55.2	0.97
900	41.5	0.97	55.0	1.05
915	41.5	0.98	55.0	1.06
1450	40.5	1.20	54.0	1.30
1610	40.3	1.29	53.8	1.40
1800-2000	40.0	1.40	53.3	1.52
2450	39.2	1.80	52.7	1.95
2600	39.0	1.96	52.5	2.16
3000	38.5	2.40	52.0	2.73
5800	35.3	5.27	48.2	6.00

Tissue Dielectric Parameters for Head and Body Phantoms

The head tissue dielectric parameters recommended by the IEEE SCC-34/SC-2 in P1528 have been incorporated in the following table. These head parameters are derived from planar layer models simulating the highest expected SAR for the dielectric properties and tissue thickness Power drifts in a human head. Other head and body tissue parameters that have not been specified in P1528 are derived from the tissue dielectric parameters computed from the 4-Cole-Cole equations described in Reference [12] and extrapolated according to the head parameters specified in P1528.

Table 2: Recommended Dielectric Performance of Tissue

Recommended Dielectric Performance of Tissue												
Ingredients (% by weight)	Frequency (MHz)											
	750		835		1800		1900		2450		2600	
Tissue	Head	Body	Head	Body	Head	Body	Head	Body	Head	Body	Head	Body
Water	40.52	51.83	41.45	52.4	55.2	70.2	54.9	40.4	62.7	73.2	54.8	68.1
Salt (Nacl)	1.61	1.52	1.45	1.4	0.3	0.4	0.18	0.5	0.5	0.04	0.1	0.01
Sugar	57.67	46.45	56.0	45.0	0.0	0.0	0.0	58.0	0.0	0.0	0.0	0.0
HEC	0.1	0.1	1.0	1.0	0.0	0.0	0.0	1.0	0.0	0.0	0.0	0.0
Bactericide	0.1	0.1	0.1	0.1	0.0	0.0	0.0	0.1	0.0	0.0	0.0	0.0
Triton x-100	0.0	0.0	0.0	0.0	0.0	0.0	0.0	0.0	36.8	0.0	0.0	0.0
DGBE	0.0	0.0	0.0	0.0	44.5	29.4	44.92	0.0	0.0	26.7	45.1	31.8
Dielectric	40.93	54.32	42.54	56.1	40.0	53.3	39.9	54.0	39.8	52.5	39.0	52.5
Conductivity	0.87	0.95	0.91	0.95	1.40	1.52	1.42	1.45	1.88	1.78	1.96	2.15

Table 3: Dielectric Performance of Head Tissue Simulating Liquid

Temperature: 21.2°C , Relative humidity: 60.7% , Measured Date: 2021-03-02 to 2021-03-09				
Frequency(MHz)	Measured Date	Description	Dielectric Parameters	
			ϵ_r	σ (s/m)
835	2021-03-02	Target Value $\pm 5\%$ window	41.50 39.43 — 43.58	0.90 0.855 — 0.945
		Measurement Value	41.78	0.92
1900	2021-03-09	Target Value $\pm 5\%$ window	40.00 38.00 — 42.00	1.40 1.33 — 1.47
		Measurement Value	40.79	1.41
2450	2021-03-06	Target Value $\pm 5\%$ window	39.2 37.24 — 41.16	1.80 1.71 — 1.89
		Measurement Value	39.59	1.88

Table 4: Dielectric Performance of Body Tissue Simulating Liquid

Temperature: 21.6°C , Relative humidity: 57.8% , Measured Date: 2021-03-02 to 2021-03-09				
Frequency(MHz)	Measured Date	Description	Dielectric Parameters	
			ϵ_r	σ (s/m)
835	2021-03-02	Target Value $\pm 5\%$ window	55.2 52.63 — 57.75	0.97 0.922 — 1.018
		Measurement Value	55.55	0.99

1900	2021-03-09	Target Value $\pm 5\%$ window	53.30 50.64 — 55.97	1.52 1.44 — 1.60
		Measurement Value	53.66	1.51
2450	2021-03-06	Target Value $\pm 5\%$ window	52.79 50.07 — 55.34	1.95 1.86 — 2.05
		Measurement Value	53.06	1.90

System Verification Plots

Product Description: Dipole

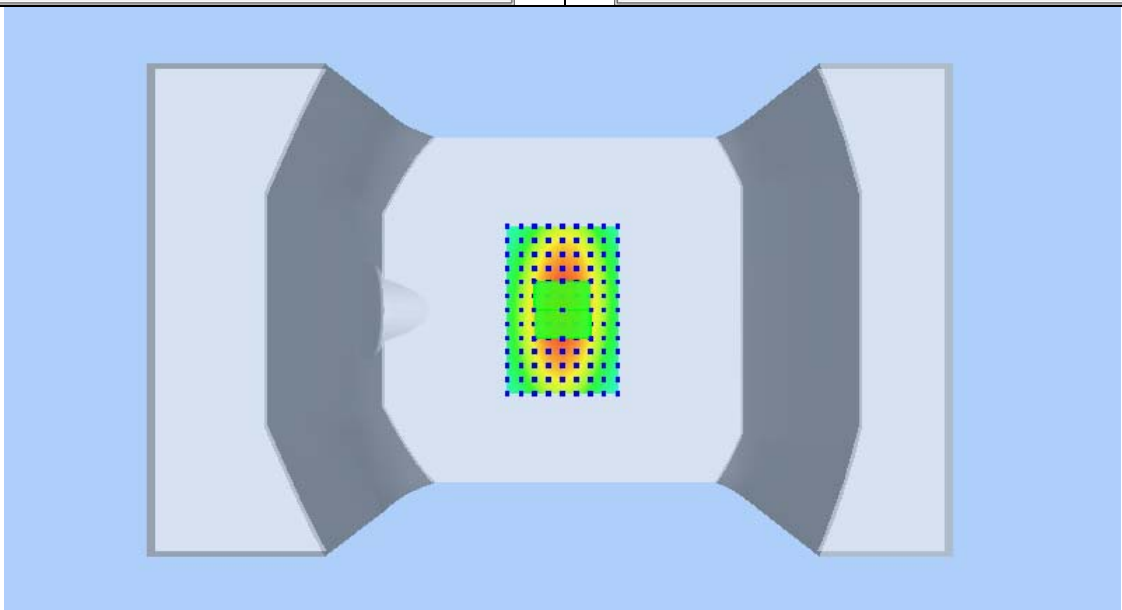
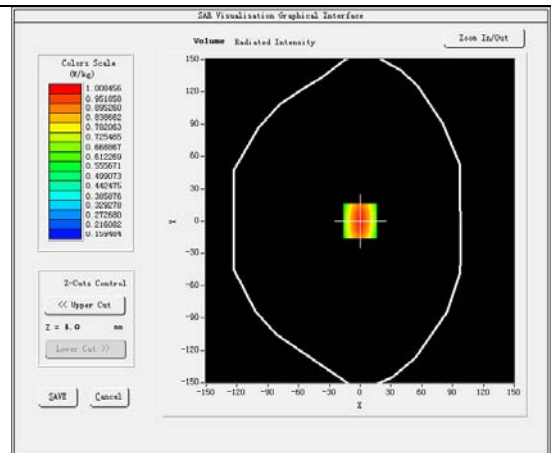
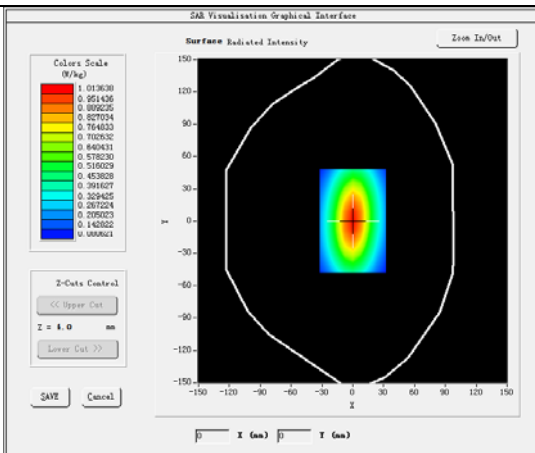
Model: SID835

Test Date: 2021-03-02

Medium(liquid type)	HSL_835
Frequency (MHz)	835.000000
Relative permittivity (real part)	41.78
Conductivity (S/m)	0.92
Input power	100mW
E-Field Probe	SN 07/15 EP247
Duty cycle	1:1
Conversion Factor	4.99
Sensor-surface	4mm
Area Scan	dx=8mm dy=8mm
Zoom Scan	5x5x7,dx=8mm dy=8mm dz=5mm
Variation (%)	-1.23
SAR 10g (W/Kg)	0.616786
SAR 1g (W/Kg)	0.957224

SURFACE SAR

VOLUME SAR

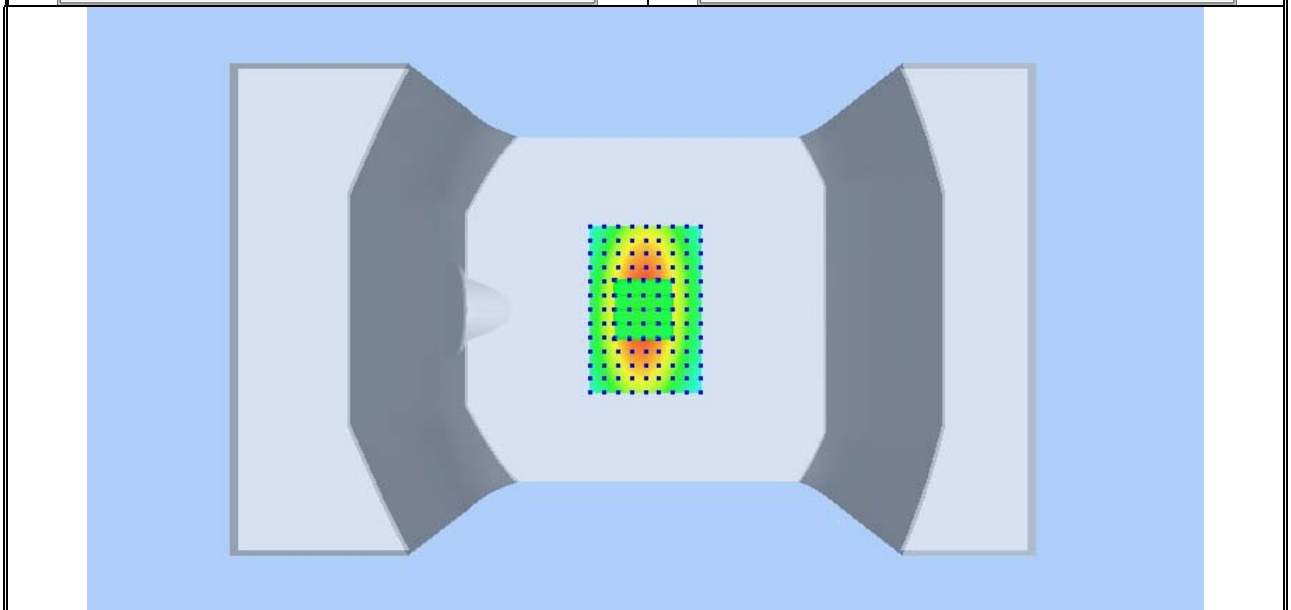
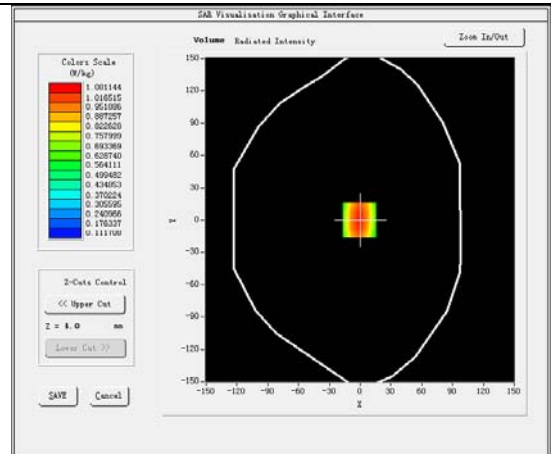
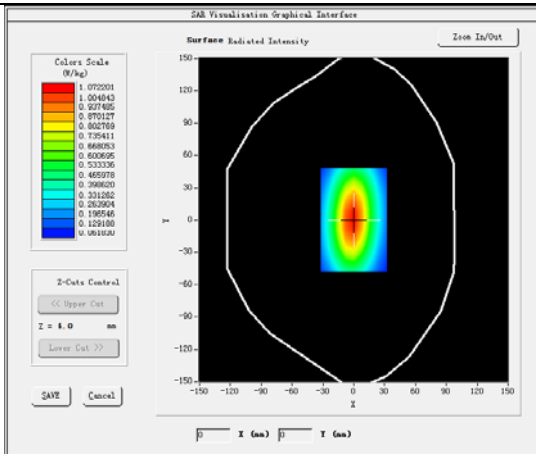


Product Description: Dipole

Model: SID835

Test Date: 2021-03-02

Medium(liquid type)	MSL_835
Frequency (MHz)	835.000000
Relative permittivity (real part)	55.55
Conductivity (S/m)	0.99
Input power	100mW
E-Field Probe	SN 07/15 EP247
Duty cycle	1:1
Conversion Factor	5.18
Sensor-surface	4mm
Area Scan	dx=8mm dy=8mm
Zoom Scan	5x5x7,dx=8mm dy=8mm dz=5mm
Variation (%)	-0.13
SAR 10g (W/Kg)	0.684597
SAR 1g (W/Kg)	1.034976
SURFACE SAR	VOLUME SAR



Product Description: Dipole

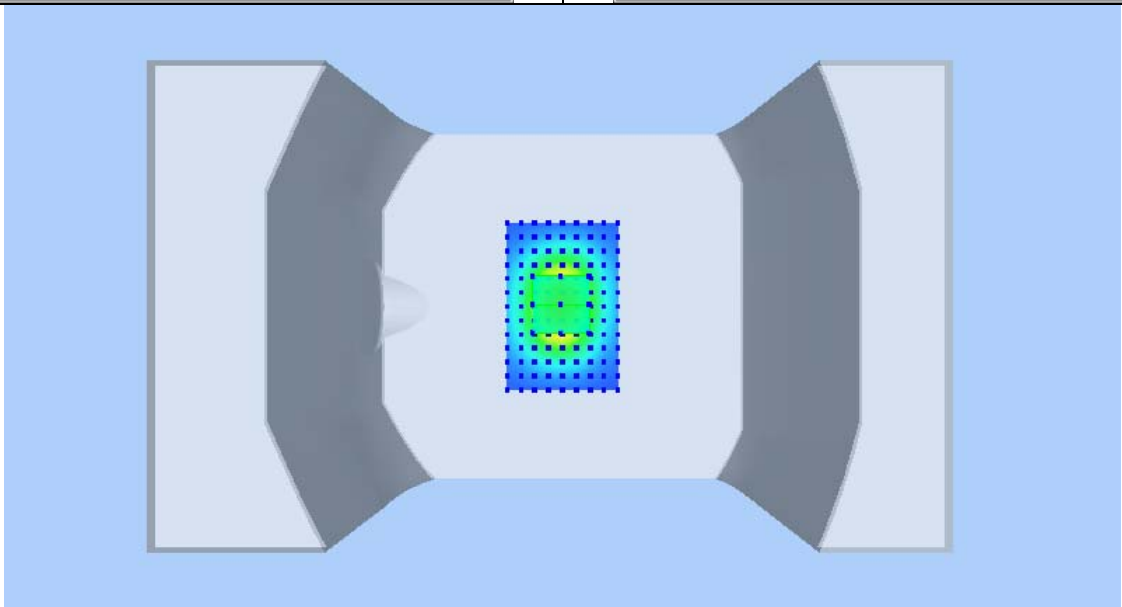
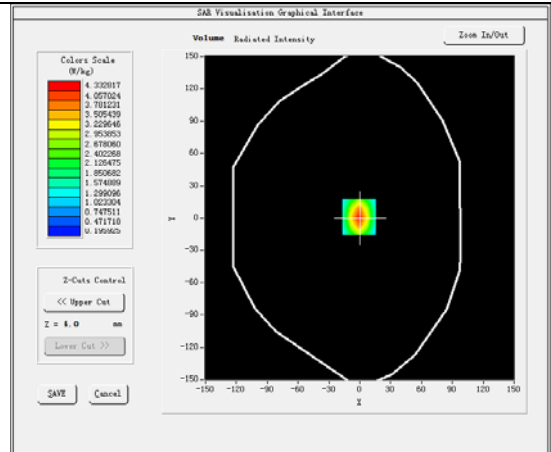
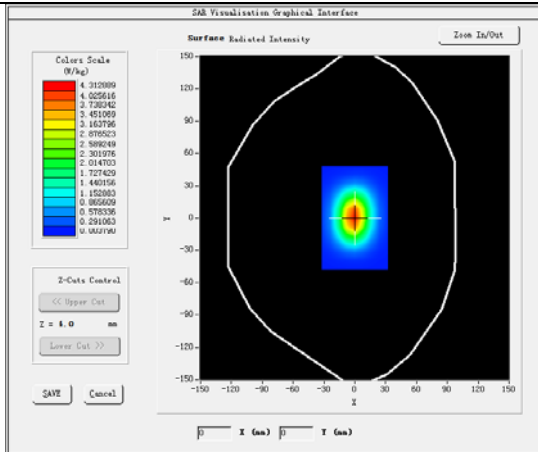
Model: SID1900

Test Date: 2021-03-09

Medium(liquid type)	HSL_1900
Frequency (MHz)	1900.000
Relative permittivity (real part)	40.79
Conductivity (S/m)	1.41
Input power	100mW
E-Field Probe	SN 07/15 EP247
Duty cycle	1:1
Conversion Factor	4.73
Sensor-Surface	4mm
Area Scan	dx=8mm dy=8mm
Zoom Scan	5x5x7,dx=8mm dy=8mm dz=5mm
Variation (%)	-0.07
SAR 10g (W/Kg)	2.105320
SAR 1g (W/Kg)	3.989551

SURFACE SAR

VOLUME SAR



Product Description: Dipole

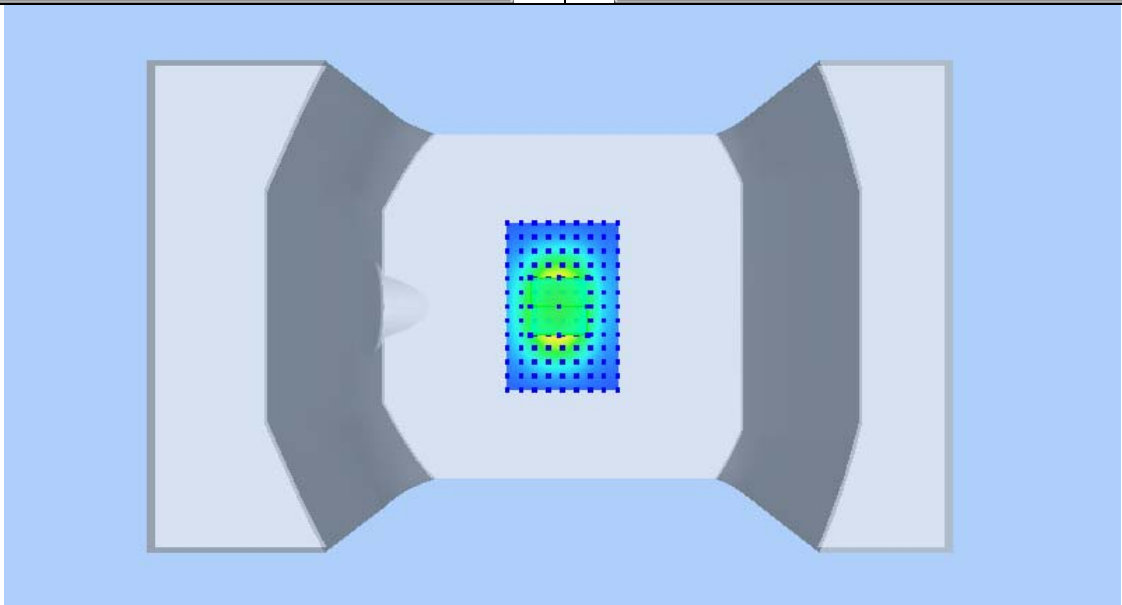
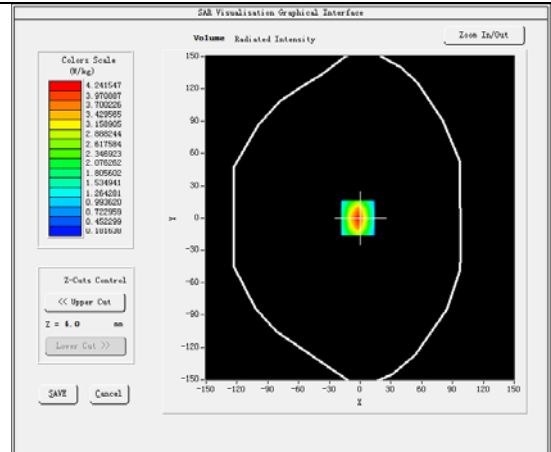
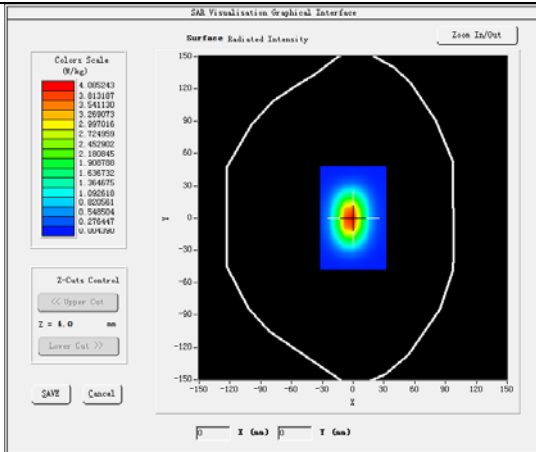
Model: SID1900

Test Date: 2021-03-09

Medium(liquid type)	MSL_1900
Frequency (MHz)	1900.000
Relative permittivity (real part)	53.66
Conductivity (S/m)	1.51
Input power	100mW
E-Field Probe	SN 07/15 EP247
Duty cycle	1:1
Conversion Factor	4.83
Sensor-Surface	4mm
Area Scan	dx=8mm dy=8mm
Zoom Scan	5x5x7,dx=8mm dy=8mm dz=5mm
Variation (%)	-0.39
SAR 10g (W/Kg)	2.037479
SAR 1g (W/Kg)	3.896309

SURFACE SAR

VOLUME SAR

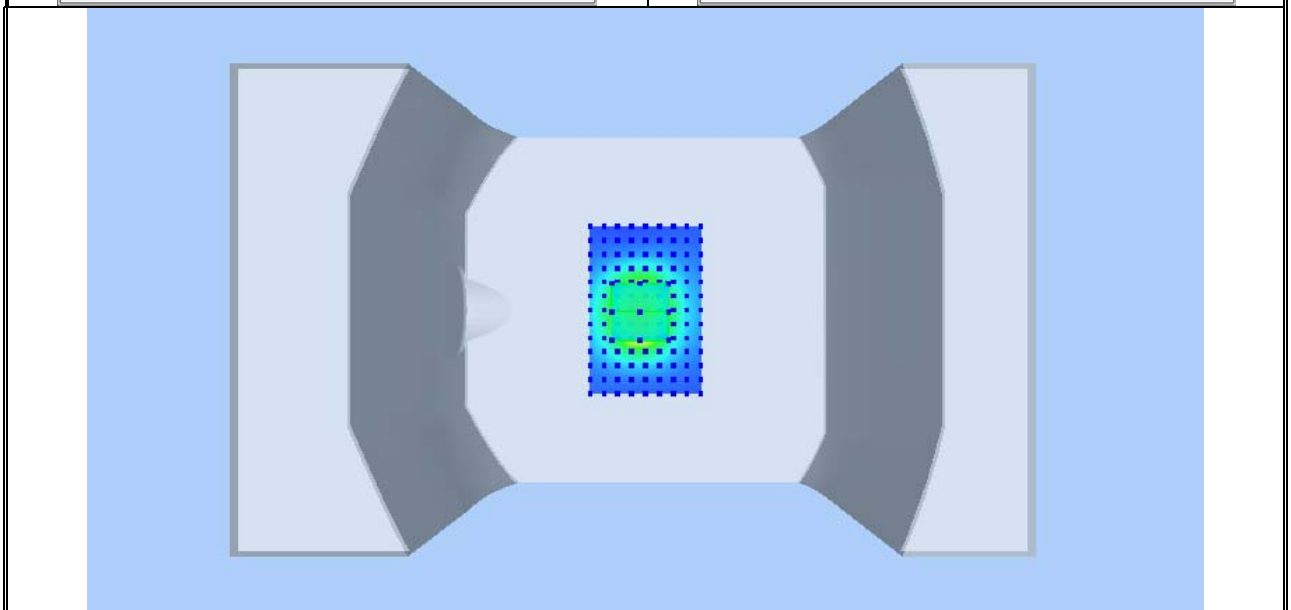
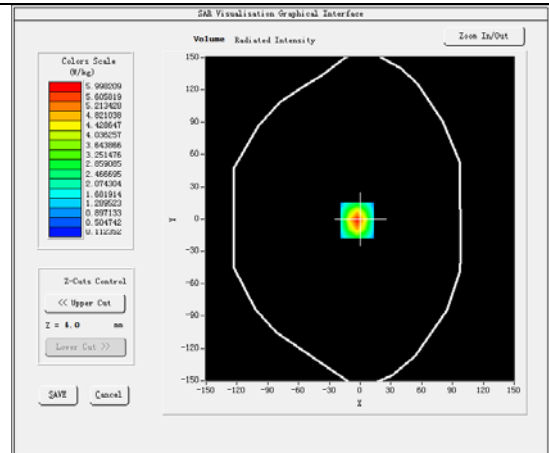
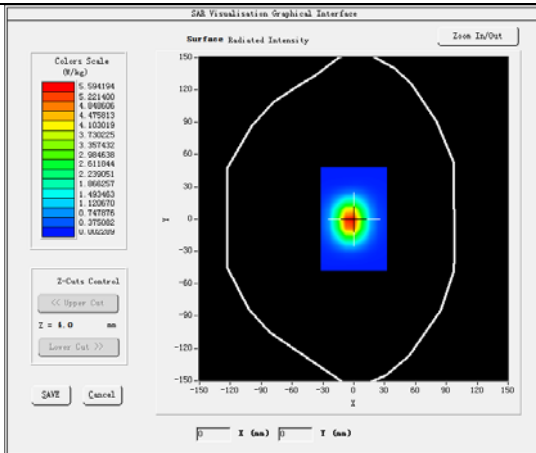


Product Description: Dipole

Model: SID2450

Test Date: 2021-03-06

Medium(liquid type)	HSL_2450
Frequency (MHz)	2450.000
Relative permittivity (real part)	39.59
Conductivity (S/m)	1.88
Input power	100mW
Crest factor	1.0
E-Field Probe	SN 07/15 EP247
Conversion Factor	4.46
Area Scan	dx=8mm dy=8mm
Zoom Scan	5x5x7,dx=8mm dy=8mm dz=5mm
Variation (%)	0.15
SAR 10g (W/Kg)	2.611025
SAR 1g (W/Kg)	5.547415
SURFACE SAR	VOLUME SAR



Product Description: Dipole

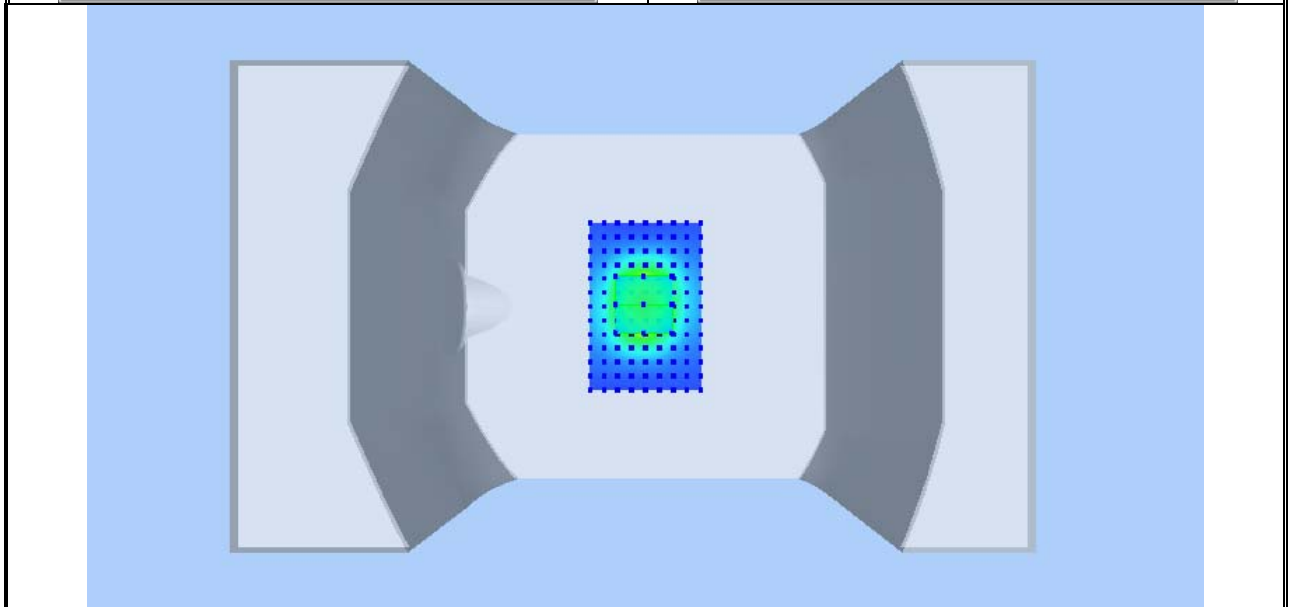
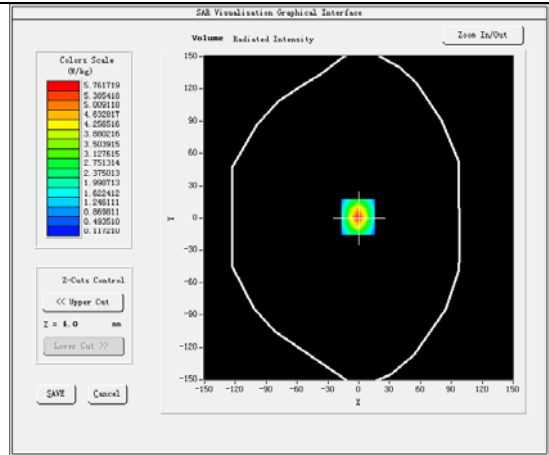
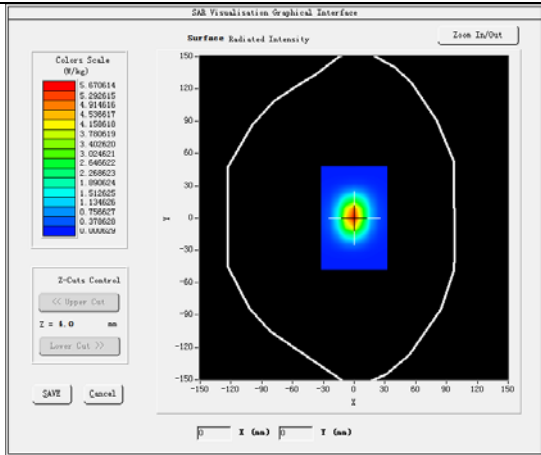
Model: SID2450

Test Date: 2021-03-06

Medium(liquid type)	MSL_2450
Frequency (MHz)	2450.000
Relative permittivity (real part)	53.06
Conductivity (S/m)	1.90
Input power	100mW
E-Field Probe	SN 07/15 EP247
Duty cycle	1:1
Conversion Factor	4.61
Sensor-surface	4mm
Area Scan	dx=8mm dy=8mm
Zoom Scan	5x5x7,dx=8mm dy=8mm dz=5mm
Variation (%)	0.26
SAR 10g (W/Kg)	2.541845
SAR 1g (W/Kg)	5.265020

SURFACE SAR

VOLUME SAR



10 Type a Measurement Uncertainty

The component of uncertainty may generally be categorized according to the methods used to evaluate them. The evaluation of uncertainty by the statistical analysis of a series of observations is termed a Type A evaluation of uncertainty. The evaluation of uncertainty by means other than the statistical analysis of a series of observations is termed a Type B evaluation of uncertainty. Each component of uncertainty, however evaluated, is represented by an estimated standard deviation, termed standard uncertainty, which is determined by the positive square root of the estimated variance

A Type A evaluation of standard uncertainty may be based on any valid statistical method for treating data. This includes calculating the standard deviation of the mean of a series of independent observations; using the method of least squares to fit a curve to the data in order to estimate the parameter of the curve and their standard deviations; or carrying out an analysis of variance in order to identify and quantify random effects in certain kinds of measurement.

A type B evaluation of standard uncertainty is typically based on scientific judgment using all of the relevant information available. These may include previous measurement data, experience and specification, data provided in calibration reports and uncertainties assigned to reference data taken from handbooks. Broadly speaking, the uncertainty is either obtained from an outdoor source or obtained from an assumed distribution, such as the normal distribution, rectangular or triangular distributions indicated in Table below :

Uncertainty Distribution	Normal	Rectangle	Triangular	U Shape
Multi-plying Factor(a)	1/k(b)	1 / $\sqrt{3}$	1 / $\sqrt{6}$	1 / $\sqrt{2}$

(a) standard uncertainty is determined as the product of the multiplying factor and the estimated range of variations in the measured quantity

(b) κ is the coverage factor

Standard Uncertainty for Assumed Distribution

The combined standard uncertainty of the measurement result represents the estimated standard deviation of the result. It is obtained by combining the individual standard uncertainties of both Type A and Type B -sum- by taking the positive square root of the estimated variances.

Expanded uncertainty is a measure of uncertainty that defines an interval about the measurement result within which the measured value is confidently believed to lie. It is obtained by multiplying the combined standard uncertainty by a coverage factor. Typically, the coverage factor ranges from 2 to 3. Using a coverage factor allows the true value of a measured quantity to be specified with a defined probability within the specified uncertainty range. For purpose of this document, a coverage factor two is used, which corresponds to confidence interval of about 95 %.

The COMOSAR Uncertainty Budget is show in below table:

UNCERTAINTY FOR SYSTEM PERFORMANCE CHECK								
a	c	d	e= f(d,k)	f	g	h= c*f/e	i= c*g/e	k
Uncertainty Component	Tol (+- %)	Prob. Dist.	Div.	Ci (1g)	Ci (10g)	1g Ui (+-%)	10g Ui (+-%)	Vi
Measurement System								
Probe calibration	5.8	N	1	1	1	5.80	5.80	∞
Axial Isotropy	3.5	R	$\sqrt{3}$	$(1-Cp)^{1/2}$	$(1-Cp)^{1/2}$	1.43	1.43	∞
Hemispherical Isotropy	5.9	R	$\sqrt{3}$	$(Cp)^{1/2}$	$(Cp)^{1/2}$	2.41	2.41	∞
Boundary effect	1.0	R	$\sqrt{3}$	1	1	0.58	0.58	∞
Linearity	4.7	R	$\sqrt{3}$	1	1	2.71	2.71	∞
System detection limits	1.0	R	$\sqrt{3}$	1	1	0.58	0.58	∞
Modulation response	0.00	N	1	1	1	0.00	0.00	∞
Readout Electronics	0.50	N	1	1	1	0.50	0.50	∞
Reponse Time	0.0	R	$\sqrt{3}$	1	1	0.00	0.00	∞
Integration Time	1.4	R	$\sqrt{3}$	1	1	0.81	0.81	∞
RF ambient Conditions - Noise	3.0	R	$\sqrt{3}$	1	1	1.73	1.73	∞
RF ambient Conditions - Reflections	3.0	R	$\sqrt{3}$	1	1	1.73	1.73	∞
Probe positioner Mechanical Tolerance	1.4	R	$\sqrt{3}$	1	1	0.81	0.81	∞
Probe positioning with respect to Phantom Shell	1.40	R	$\sqrt{3}$	1	1	0.81	0.81	∞
Extrapolation, interpolation and integration Algorithms for Max. SAR Evaluation	2.3	R	$\sqrt{3}$	1	1	1.33	1.33	∞
Dipole								
Deviation of experimental source from numerical source	4.00	N	1	1	1	4.00	4.00	∞
Input power and SAR drift measurement	5.00	R	$\sqrt{3}$	1	1	2.89	2.89	∞
Dipole axis to liquid Distance	2.00	R	$\sqrt{3}$	1	1	1.15	1.15	∞
Phantom and Tissue Parameters								
Phantom Uncertainty (Shape and thickness tolerances)	4.00	R	$\sqrt{3}$	1	1	2.31	2.31	∞
Uncertainty in SAR correction for deviation (in permittivity and conductivity)	2.00	N	1	1	1	2.00	1.68	∞
Liquid conductivity (temperature uncertainty)	2.50	N	1	0.78	0.71	1.95	1.77	∞
Liquid conductivity - measurement uncertainty	4.00	N	1	0.23	0.26	0.92	1.04	M
Liquid permittivity (temperature uncertainty)	2.50	N	1	0.78	0.71	1.95	1.77	∞
Liquid permittivity - measurement uncertainty	5.00	N	1	0.23	0.26	1.15	1.30	M
Combined Standard Uncertainty		RSS				10.21	10.12	
Expanded Uncertainty (95% Confidence interval)		k				19.91	19.73	

UNCERTAINTY EVALUATION FOR HANDSET SAR TEST								
a	c	d	e= f(d,k)	f	g	h= c*f/e	i= c*g/e	k
Uncertainty Component	Tol (+-%)	Prob. Dist.	Div.	Ci (1g)	Ci (10g)	1g Ui (+-%)	10g Ui (+-%)	Vi
Measurement System								
Probe calibration	5.8	N	1	1	1	5.80	5.80	∞
Axial Isotropy	3.5	R	√3	$(1_{Cp})^{1/2}$	$(1_{Cp})^{1/2}$	1.43	1.43	∞
Hemispherical Isotropy	5.9	R	√3	$(Cp)^{1/2}$	$(Cp)^{1/2}$	2.41	2.41	∞
Boundary effect	1.0	R	√3	1	1	0.58	0.58	∞
Linearity	4.7	R	√3	1	1	2.71	2.71	∞
System detection limits	1.0	R	√3	1	1	0.58	0.58	∞
Modulation response	3.00	N	1	1	1	3.00	3.00	∞
Readout Electronics	0.50	N	1	1	1	0.50	0.50	∞
Reponse Time	0.0	R	√3	1	1	0.00	0.00	∞
Integration Time	1.4	R	√3	1	1	0.81	0.81	∞
RF ambient Conditions - Noise	3.0	R	√3	1	1	1.73	1.73	∞
RF ambient Conditions - Reflections	3.0	R	√3	1	1	1.73	1.73	∞
Probe positioner Mechanical Tolerance	1.4	R	√3	1	1	0.81	0.81	∞
Probe positioning with respect to Phantom Shell	1.40	R	√3	1	1	0.81	0.81	∞
Extrapolation, interpolation and integration Algorithms for Max. SAR Evaluation	2.3	R	√3	1	1	1.33	1.33	∞
Test sample Related								
Test sample positioning	2.60	N	1	1	1	2.60	2.60	N-1
Device Holder Uncertainty	3.00	N	1	1	1	3.00	3.00	N-1
Output power Variation - SAR drift measurement	5.00	R	√3	1	1	2.89	2.89	∞
SAR scaling	2.00	R	√3	1	1	1.15	1.15	∞
Phantom and Tissue Parameters								
Phantom Uncertainty (Shape and thickness tolerances)	4.00	R	√3	1	1	2.31	2.31	∞
Uncertainty in SAR correction for deviation (in permittivity and conductivity)	2.00	N	1	1	1	2.00	1.68	∞
Liquid conductivity (temperature uncertainty)	2.50	N	1	0.78	0.71	1.95	1.77	∞
Liquid conductivity - measurement uncertainty	4.00	N	1	0.23	0.26	0.92	1.04	M
Liquid permittivity (temperature uncertainty)	2.50	N	1	0.78	0.71	1.95	1.77	∞
Liquid permittivity - measurement uncertainty	5.00	N	1	0.23	0.26	1.15	1.30	M
Combined Standard Uncertainty		RSS				10.63	10.54	
Expanded Uncertainty (95% Confidence interval)		k				20.73	20.56	

11 Output Power Verification

Test Condition:

1. Conducted Measurement
EUT was set for low, mid, high channel with modulated mode and highest RF output power.
The base station simulator was connected to the antenna terminal.
2. Conducted Emissions Measurement Uncertainty
All test measurements carried out are traceable to national standards. The uncertainty of the measurement at a confidence level of approximately 95% (in the case where distributions are normal), with a coverage factor of 2, in the range 30MHz – 40GHz is ± 1.5 dB.
3. Environmental Conditions

Temperature	23°C
Relative Humidity	53%
Atmospheric Pressure	1019mbar
4. Test Date : 2021-03-02
Tested By : Andy Feng

Test Procedures:

Smart phone radio output power measurement

1. The transmitter output port was connected to base station emulator.
2. Establish communication link between emulator and EUT and set EUT to operate at maximum output power all the time.
3. Select lowest, middle, and highest channels for each band and different possible test mode.
4. Measure the conducted peak burst power and conducted average burst power from EUT antenna port.

Other radio output power measurement:

The output power was measured using power meter at low, mid, and high channels.

Source-based Time Averaged Burst Power Calculation:

For TDMA, the following duty cycle factor was used to calculate the source-based time average power

Number of Time slot	1	2	3	4
Duty Cycle	1:8	1:4	1:2.66	1:2
Duty cycle factor	-9.03 dB	-6.02 dB	-4.26 dB	-3.01 dB
Crest Factor	8	4	2.66	2

Remark: *Time slot duty cycle factor = 10 * log (Time Slot Duty Cycle)*

Source based time averaged power = Maximum burst averaged power (1 Uplink) – 9.03 dB

Source based time averaged power = Maximum burst averaged power (2 Uplink) – 6.02 dB

Source based time averaged power = Maximum burst averaged power (3 Uplink) – 4.26 dB

Source based time averaged power = Maximum burst averaged power (4 Uplink) – 3.01 dB

Test Result:

Burst Average Power (dBm);								
Band	GSM850				PCS1900			
Channel	128	190	251	Tune up Power tolerant	512	661	810	Tune up Power tolerant
Frequency (MHz)	824.2	836.6	848.8	/	1850.2	1880	1909.8	/
GSM Voice	32.78	32.87	32.93	32±1	29.50	29.32	29.38	29±1
GPRS 1 slots	32.74	32.82	33.00	32±1	29.50	29.49	29.42	29±1
GPRS 2 slots	31.81	31.85	32.10	31±1	28.08	27.95	27.91	28±1
GPRS 3 slots	30.06	30.20	30.53	30±1	26.34	26.24	26.18	26±1
GPRS 4 slots	29.48	29.14	29.93	29±1	25.52	25.41	25.37	25±1
Remark : GPRS, CS1 coding scheme. Multi 1 Slot , Support Max 4 downlink, 1 uplink , 5 working link Multi 2 Slots , Support Max 4 downlink, 2 uplink , 5 working link Multi 3 Slots , Support Max 4 downlink, 3 uplink , 5 working link Multi 4 Slots , Support Max 4 downlink, 4 uplink , 5 working link								

Source Based time Average Power (dBm)								
Band	GSM850				PCS1900			
Channel	128	190	251	Time Average factor	512	661	810	Time Average factor
Frequency (MHz)	824.2	836.6	848.8	/	1850.2	1880	1909.8	/
GSM Voice	23.75	23.84	23.90	-9.03	20.47	20.29	20.35	-9.03
GPRS 1 slots	23.71	23.79	23.97	-9.03	20.47	20.46	20.39	-9.03
GPRS 2 slots	25.79	25.83	26.08	-6.02	22.06	21.93	21.89	-6.02
GPRS 3 slots	25.80	25.94	26.27	-4.26	22.08	21.98	21.92	-4.26
GPRS 4 slots	26.47	26.13	26.92	-3.01	22.51	22.40	22.36	-3.01

Remark :

Time average factor = 1 uplink , $10 \cdot \log(1/8) = -9.03\text{dB}$, 2 uplink , $10 \cdot \log(2/8) = -6.02\text{dB}$, 3 uplink , $10 \cdot \log(3/8) = -4.26\text{dB}$, 4 uplink , $10 \cdot \log(4/8) = -3.01\text{dB}$

Source based time average power = Burst Average power + Time Average factor

Note: DUT was set in GPRS(4Tx slots) due to the Maximum source-base time average output power for body SAR.

WCDMA - Average Power (dBm)								
Band	WCDMA Band II				WCDMA Band V			
Channel	9262	9400	9538	Tune up Power tolerant	4132	4183	4233	Tune up Power tolerant
Frequency (MHz)	1852.4	1880	1907.6	/	826.4	836.6	846.6	/
RMC 12.2k	22.62	22.71	22.45	22±1	22.94	22.71	22.92	22±1
HSDPA Subtest-1	21.84	21.90	21.60	21±1	21.86	22.18	21.92	22±1
HSDPA Subtest-2	21.66	21.65	21.43	21±1	21.76	22.08	21.72	22±1
HSDPA Subtest-3	21.42	21.46	21.41	21±1	21.68	21.98	21.63	22±1
HSDPA Subtest-4	20.92	20.85	20.78	21±1	21.38	21.62	21.38	22±1
HSUPA Subtest-1	21.83	21.90	21.58	21±1	22.30	22.18	22.38	22±1
HSUPA Subtest-2	21.23	21.25	21.08	21±1	22.07	21.95	22.01	22±1
HSUPA Subtest-3	21.19	21.21	20.97	21±1	21.86	21.86	21.84	22±1
HSUPA Subtest-4	21.14	21.15	20.86	21±1	21.63	21.67	21.61	22±1
HSUPA Subtest-5	20.96	20.95	20.75	21±1	21.41	21.39	21.40	22±1

WIFI Mode (2.4G)

Mode	Channel number	Frequency (MHz)	Data rate(Mbps)	Average Output Power(dBm)	Average Tune up limited(dBm)
802.11b	1	2412	1	15.17	15.0±1
	6	2437	1	15.71	15.0±1
	11	2462	1	15.98	15.0±1
802.11g	1	2412	6	14.54	15.0±1
	6	2437	6	14.92	15.0±1
	11	2462	6	15.24	15.0±1
802.11n(HT20)	1	2412	MCS0	14.42	15.0±1
	6	2437	MCS0	15.10	15.0±1
	11	2462	MCS0	15.29	15.0±1

Bluetooth Measurement Result

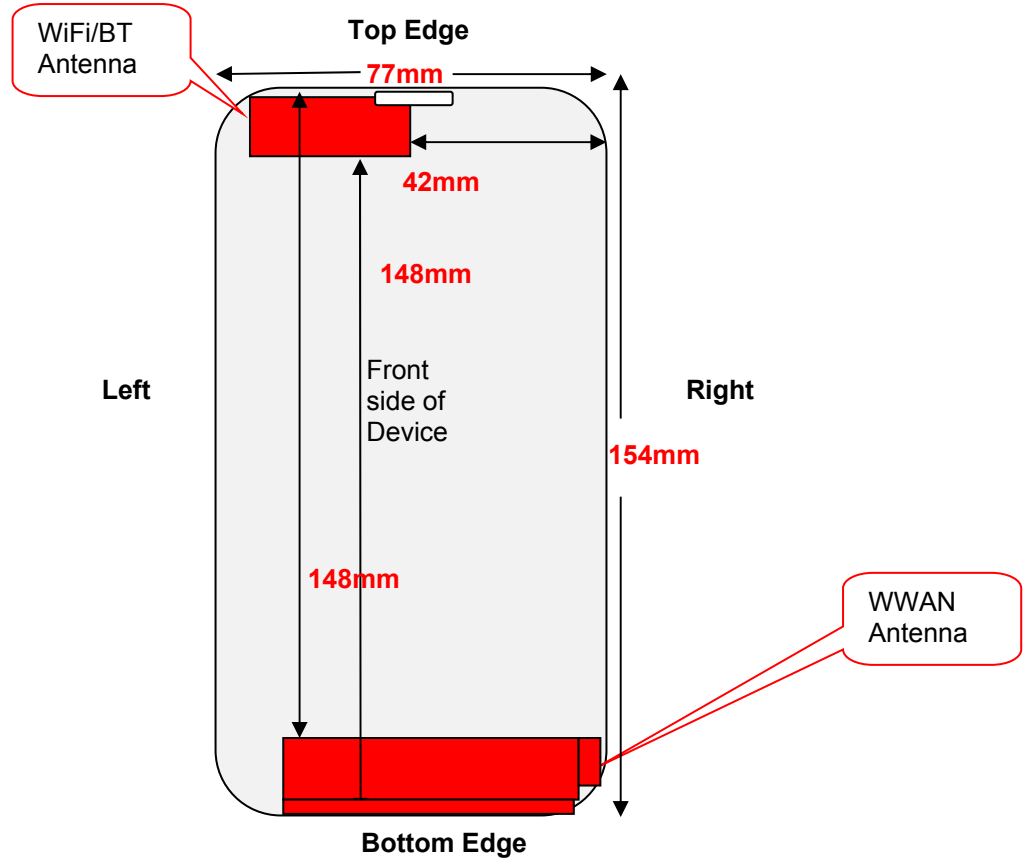
Mode	Frequency (MHz)	Average Output Power(dBm)	Tune up limited(dBm)
GFSK	2402	7.85	7.0±1
	2441	7.76	7.0±1
	2480	7.87	7.0±1
π/4DQPSK	2402	7.68	7.0±1
	2441	7.49	7.0±1
	2480	7.67	7.0±1
8DPSK	2402	7.74	7.0±1
	2441	7.59	7.0±1
	2480	7.76	7.0±1

BLE Measurement Result

Channel number	Frequency (MHz)	Average Output Power(dBm)	Tune up limited(dBm)
0	2402	7.56	7.0±1
19	2440	7.39	7.0±1
39	2480	7.48	7.0±1

12 Exposure Conditions Consideration

EUT antenna location:



Test position consideration:

Distance of EUT antenna-to-edge/surface(mm), Test distance:10mm						
Antennas	Back side	Front side	Left Edge	Right Edge	Top Edge	Bottom Edge
WWAN	2.5	6.5	9	1	148	1
WLAN	2.5	6.5	8	42	1	148
Bluetooth	2.5	6.5	8	42	1	148

Test distance:10mm						
Antennas	Back side	Front side	Left Edge	Right Edge	Top Edge	Bottom Edge
WWAN	YES	YES	YES	YES	NO	YES
WLAN	YES	YES	YES	NO	YES	NO
Bluetooth	YES	YES	YES	NO	YES	NO

Note:

1. Head/Body SAR/Hotspot mode assessments are required.
2. Referring to KDB 941225 D06v02r01, when the overall device length and width are $\geq 9\text{cm} * 5\text{cm}$, the test distance is 10mm. SAR must be measured for all sides and surfaces with a transmitting antenna located within 25mm from that surface or edge.
3. Per KDB 447498 D01v06, for handsets the test separation distance is determined by the smallest distance between the outer surface of the device and the user, which is 0 mm for head SAR, 10 mm for body SAR.

RF Exposure

Smart phone-ELEMENT PLAY, FCC ID: 2AEP1ELEMENTPLAY

Standard Requirement:

According to §15.247 (i) and §1.1307(b)(1), systems operating under the provisions of this section shall be operated in a manner that ensures that the public is not exposed to radio frequency energy level in excess of the Commission's guidelines.

The 1-g and 10-g SAR test exclusion thresholds for 100 MHz to 6 GHz at *test separation distances* ≤ 50 mm are determined by:

$$[(\text{max. power of channel, including tune-up tolerance, mW}) / (\text{min. test separation distance, mm})] \cdot [\sqrt{f_{\text{(GHz)}}}] \leq 3.0 \text{ for 1-g SAR and } \leq 7.5 \text{ for 10-g extremity SAR,}^{16} \text{ where}$$

- $f_{\text{(GHz)}}$ is the RF channel transmit frequency in GHz
- Power and distance are rounded to the nearest mW and mm before calculation¹⁷
- The result is rounded to one decimal place for comparison

The test exclusions are applicable only when the minimum *test separation distance* is ≤ 50 mm and for transmission frequencies between 100 MHz and 6 GHz. When the minimum *test separation distance* is < 5 mm, a distance of 5 mm is applied to determine SAR test exclusion.

Routine SAR evaluation refers to that specifically required by § 2.1093, using measurements or computer simulation. When routine SAR evaluation is not required, portable transmitters with output power greater than the applicable low threshold require SAR evaluation to qualify for TCB approval.

$$\text{Exclusion Thresholds} = P\sqrt{F} / D$$

P= Maximum turn-up power in mW

F= Channel frequency in GHz

D= Minimum test separation distance in mm

Test Distance (5mm)

Mode	MAX Power (dBm)	Tune Up Power (dBm)	Max Tune Up Power (dBm)	Max Tune Up Power (mW)	Exclusion Thresholds	Limit
WIFI	15.98	15.0±1	16	39.81	12.493	3
Bluetooth	7.87	7.0±1	8	6.31	1.987	3
BLE	7.56	7.0±1	8	6.31	1.956	3

Test Distance (10mm)

Mode	MAX Power (dBm)	Tune Up Power (dBm)	Max Tune Up Power (dBm)	Max Tune Up Power (mW)	Exclusion Thresholds	Limit
WIFI	15.98	15.0±1	16	39.81	6.246	3
Bluetooth	7.87	7.0±1	8	6.31	0.994	3
BLE	7.56	7.0±1	8	6.31	0.978	3

Result: WIFI SAR measurement is required and BT SAR is not required.

13 SAR Test Results

Test Condition:

1. SAR Measurement
The distance between the EUT and the antenna of the emulator is more than 50 cm and the output power radiated from the emulator antenna is at least 30 dB less than the output power of EUT.
2. Environmental Conditions
Temperature 23°C
Relative Humidity 57%
Atmospheric Pressure 1019mbar
3. Test Date : 2021-03-02~2021-03-09
Tested By : Andy Feng

Generally Test Procedures:

1. Establish communication link between EUT and base station emulation by air link.
2. Place the EUT in the selected test position. (Cheek, tilt or flat)
3. Perform SAR testing at middle or highest output power channel under the selected test mode. If the measured 1-g SAR is ≤ 0.8 W/kg, then testing for the other channel will not be performed.
4. When SAR is < 0.8 W/kg, no repeated SAR measurement is required

For WCDMA test:

1. KDB941225 D01-Body SAR is not required for HSDPA when the average output of each RF channel with HSDPA active is less than 0.25dB higher than measured without HSDPA using 12.2kbps RMC or the maximum SAR for 12.2kbps RMC $< 75\%$ of the SAR limit.
2. KDB941225 D01-Body SAR is not required for handset with HSPA capabilities when the maximum average output of each RF channel with HSUPA/HSDPA active is less than 0.25dB higher than that measure without HSUPA/HSDPA using 12.2kbps RMC AND THE maximum SAR for 12.2kbps RMC is $< 75\%$ of the SAR limit

SAR Summary Test Result:**Table 5: SAR Values of GSM 850MHz Band**

Test Positions		Channel		Test Mode	Power(dBm)		SAR 1g(W/Kg), Limit(1.6W/kg)		Plot No.
		CH.	MHz		Maximum Turn-up Power(dBm)	Measured output power(dBm)	Measured SAR 1g(W/kg)	Scaled SAR 1g(W/kg)	
Right Head	Cheek	251	848.8	Voice call	33	32.93	0.457	0.46	--
	Tilt	251	848.8	Voice call	33	32.93	0.415	0.42	--
Left Head	Cheek	251	848.8	Voice call	33	32.93	0.449	0.46	--
	Tilt	251	848.8	Voice call	33	32.93	0.326	0.33	--
Right Head	Cheek	128	824.2	GPRS 4 slots	32	31.66	0.453	0.49	1
	Tilt	128	824.2	GPRS 4 slots	32	31.66	0.352	0.38	--
Left Head	Cheek	128	824.2	GPRS 4 slots	32	31.66	0.431	0.47	--
	Tilt	128	824.2	GPRS 4 slots	32	31.66	0.415	0.45	--
Body-worn (10mm Separation)	Front side	251	848.8	GPRS 4 slots	30	29.93	0.273	0.28	--
	Back side	251	848.8	GPRS 4 slots	30	29.93	0.485	0.49	2
Hotspot (10mm Separation)	Front side	251	848.8	GPRS 4 slots	30	29.93	0.273	0.28	--
	Back side	251	848.8	GPRS 4 slots	30	29.93	0.485	0.49	2
	Right Edge	251	848.8	GPRS 4 slots	30	29.93	0.200	0.20	--
	Left Edge	251	848.8	GPRS 4 slots	30	29.93	0.159	0.16	--
	Bottom Edge	251	848.8	GPRS 4 slots	30	29.93	0.158	0.16	--

Table 6: SAR Values of GSM 1900MHz Band

Test Positions		Channel		Test Mode	Power(dBm)		SAR 1g(W/Kg), Limit(1.6W/kg)		Plot No.
		CH.	MHz		Maximum Turn-up Power(dBm)	Measured output power(dBm)	Measured SAR 1g(W/kg)	Scaled SAR 1g(W/kg)	
Right Head	Cheek	512	1850 .2	Voice call	30	29.50	0.007	0.01	--
	Tilt	512	1850 .2	Voice call	30	29.50	0.005	0.01	--
Left Head	Cheek	512	1850 .2	Voice call	30	29.50	0.010	0.01	--
	Tilt	512	1850 .2	Voice call	30	29.50	0.008	0.01	--
Right Head	Cheek	661	1880	GPRS 4 slots	29	28.91	0.086	0.09	--
	Tilt	661	1880	GPRS 4 slots	29	28.91	0.074	0.08	--
Left Head	Cheek	661	1880	GPRS 4 slots	29	28.91	0.101	0.10	3
	Tilt	661	1880	GPRS 4 slots	29	28.91	0.099	0.10	--
Body-worn (10mm Separation)	Front side	661	1880	GPRS 4 slots	26	28.91	0.507	0.58	--
	Back side	512	1850 .2	GPRS 4 slots	26	25.52	0.815	0.91	--
	Back side	661	1880	GPRS 4 slots	26	25.41	0.919	1.05	4
	Back side	661	1880	GPRS 4 slots	26	25.41	0.917	1.05	--
	Back side	810	1909 .8	GPRS 4 slots	26	25.37	0.845	0.98	--
Hotspot (10mm Separation)	Front side	661	1880	GPRS 4 slots	26	25.41	0.507	0.58	--
	Back side	512	1850 .2	GPRS 4 slots	26	25.52	0.815	0.91	--
	Back side	661	1880	GPRS 4 slots	26	25.41	0.919	1.05	4
	Back side	661	1880	GPRS 4 slots	26	25.41	0.917	1.05	--
	Back side	810	1909 .8	GPRS 4 slots	26	25.37	0.845	0.98	--
	Right Edge	661	1880	GPRS 4 slots	26	25.41	0.260	0.30	--
	Left Edge	661	1880	GPRS 4 slots	26	25.41	0.255	0.29	--
	Bottom Edge	661	1880	GPRS 4 slots	26	25.41	0.189	0.22	--

Table 7: SAR Values of WCDMA BAND V

Test Positions		Channel		Test Mode	Power(dBm)		SAR 1g(W/Kg), Limit(1.6W/kg)		Plot No.
		CH.	MHz		Maximum Turn-up Power(dBm)	Measured output power(dBm)	Measured SAR 1g(W/kg)	Scaled SAR 1g(W/kg)	
Right Head	Cheek	4132	826.4	RMC 12.2kbps	23	22.94	0.290	0.29	5
	Tilt	4132	826.4	RMC 12.2kbps	23	22.94	0.201	0.20	--
Left Head	Cheek	4132	826.4	RMC 12.2kbps	23	22.94	0.245	0.25	--
	Tilt	4132	826.4	RMC 12.2kbps	23	22.94	0.203	0.21	--
Body-worn (10mm Separation)	Front side	4132	826.4	RMC 12.2kbps	23	22.94	0.274	0.28	--
	Back side	4132	826.4	RMC 12.2kbps	23	22.94	0.352	0.36	6
Hotspot (10mm Separation)	Front side	4132	826.4	RMC 12.2kbps	23	22.94	0.274	0.28	--
	Back side	4132	826.4	RMC 12.2kbps	23	22.94	0.352	0.36	6
	Right Edge	4132	826.4	RMC 12.2kbps	23	22.94	0.215	0.22	--
	Left Edge	4132	826.4	RMC 12.2kbps	23	22.94	0.215	0.22	--
	Bottom Edge	4132	826.4	RMC 12.2kbps	23	22.94	0.140	0.14	--

Table 8: SAR Values of WCDMA BAND II

Test Positions		Channel		Test Mode	Power(dBm)		SAR 1g(W/Kg), Limit(1.6W/kg)		Plot No.
		CH.	MHz		Maximum Turn-up Power(dBm)	Measured output power(dBm)	Measured SAR 1g(W/kg)	Scaled SAR 1g(W/kg)	
Right Head	Cheek	9400	1880	RMC 12.2kbps	23	22.71	0.097	0.10	--
	Tilt	9400	1880	RMC 12.2kbps	23	22.71	0.052	0.06	--
Left Head	Cheek	9400	1880	RMC 12.2kbps	23	22.71	0.217	0.23	7
	Tilt	9400	1880	RMC 12.2kbps	23	22.71	0.152	0.16	--
Body-worn (10mm Separation)	Front side	9400	1880	RMC 12.2kbps	23	22.71	0.589	0.63	--
	Back side	9262	1852.4	RMC 12.2kbps	23	22.62	0.925	1.01	--
	Back side	9400	1880	RMC 12.2kbps	23	22.71	1.009	1.08	8
	Back side	9400	1880	RMC 12.2kbps	23	22.71	1.000	1.07	--
	Back side	9538	1907.6	RMC 12.2kbps	23	22.45	0.902	1.02	--
Hotspot (10mm Separation)	Front side	9400	1880	RMC 12.2kbps	23	22.71	0.589	0.63	--
	Back side	9262	1852.4	RMC 12.2kbps	23	22.62	0.925	1.01	--

Back side	9400	1880	RMC 12.2kbps	23	22.71	1.009	1.08	8
Back side	9400	1880	RMC 12.2kbps	23	22.71	1.000	1.07	--
Back side	9538	1907.6	RMC 12.2kbps	23	22.45	0.902	1.02	--
Right Edge	9400	1880	RMC 12.2kbps	23	22.71	0.109	0.11	--
Left Edge	9400	1880	RMC 12.2kbps	23	22.71	0.131	0.14	--
Bottom Edge	9262	1852.4	RMC 12.2kbps	23	22.62	0.901	0.98	--
Bottom Edge	9400	1880	RMC 12.2kbps	23	22.71	0.978	1.05	--
Bottom Edge	9400	1880	RMC 12.2kbps	23	22.71	0.972	1.04	--
Bottom Edge	9538	1907.6	RMC 12.2kbps	23	22.45	0.903	1.02	--

Table 9: SAR Values of 2.4G WIFI

Test Positions		Channel		Test Mode	Power(dBm)		SAR 1g(W/Kg), Limit(1.6W/kg)		Plot No.
		CH.	MHz		Maximum Turn-up Power(dBm)	Measured output power(dBm)	Measured SAR 1g(W/kg)	Scaled SAR 1g(W/kg)	
Right Head	Cheek	High	2462	DSSS	16	15.98	0.607	0.61	9
	Tilt	High	2462	DSSS	16	15.98	0.414	0.42	--
Left Head	Cheek	High	2462	DSSS	16	15.98	0.340	0.34	--
	Tilt	High	2462	DSSS	16	15.98	0.260	0.26	--
Body-worn (10mm Separation)	Front Side	High	2462	DSSS	16	15.98	0.115	0.12	10
	Back Side	High	2462	DSSS	16	15.98	0.099	0.10	--
Hotspot (10mm Separation)	Front Side	High	2462	DSSS	16	15.98	0.115	0.12	10
	Back Side	High	2462	DSSS	16	15.98	0.099	0.10	--
	Left Edge	High	2462	DSSS	16	15.98	0.035	0.04	--
	Top Edge	High	2462	DSSS	16	15.98	0.062	0.06	--

Note: 1. According to KDB 648474-D04 Handset SAR v01r03 section 1.5, the diagonal dimension of this device is > 16.0 cm, but the hotspot mode 1-g reported SAR is 1.08 W < 1.2 W, so the 10-g extremity SAR is not required.

Measurement variability consideration

Refer to FCC KDB 248227 section 5.2.1~5.2.2:

802.11b DSSS SAR Test Requirements:

SAR is measured for 2.4 GHz 802.11b DSSS using either a fixed test position or, when applicable, the initial test position procedure.

SAR test reduction is determined according to the following:

1) When the reported SAR of the highest measured maximum output power channel (section 3.1) for the exposure configuration is ≤ 0.8 W/kg,

no further SAR testing is required for 802.11b DSSS in that exposure configuration.

2) When the reported SAR is > 0.8 W/kg, SAR is required for that exposure configuration using the next highest measured output power channel. When any reported SAR is > 1.2 W/kg,

SAR is required for the third channel; i.e., all channels require testing.

2.4 GHz 802.11g/n OFDM SAR Test Exclusion Requirements

When SAR measurement is required for 2.4 GHz 802.11g/n OFDM configurations, the measurement and test reduction procedures for OFDM are applied (section 5.3).

SAR is not required for the following 2.4 GHz OFDM conditions.

1) When KDB Publication 447498 SAR test exclusion applies to the OFDM configuration.

2) When the highest reported SAR for DSSS is adjusted by the ratio of OFDM to DSSS specified maximum output power and the adjusted SAR is ≤ 1.2 W/kg.

Note: 802.11b DSSS SAR test is required. The highest reported SAR for DSSS* the ratio of OFDM to DSSS(Max output power) is $0.61 \times 0.853 = 0.52$ W/Kg < 1.2 W/Kg. so the OFDM SAR test is not required.

According to KDB 865664 D01v01r04 section 2.8.1, repeated measurements are required following the procedures as below:

Repeated measurement is not required when the original highest measured SAR is < 0.80 W/kg; steps 2) through 4) do not apply.

When the original highest measured SAR is ≥ 0.80 W/kg, repeat that measurement once.

Perform a second repeated measurement only if the ratio of largest to smallest SAR for the original and first repeated measurements is > 1.20 or when the original or repeated measurement is ≥ 1.45 W/kg (~ 10% from the 1-g SAR limit).

Perform a third repeated measurement only if the original, first or second repeated measurement is ≥ 1.5 W/kg and the ratio of largest to smallest SAR for the original, first and second repeated measurements is > 1.20 .

Repeated SAR:

Band	Position	Channel	Mode	measured SAR(W/kg)				
				Original	1st Repeated		2nd Repeated	
					Value	Ratio	Value	Ratio
GSM 1900	Back side	1880	GPRS-4 slot	0.919	0.917	1.002	NA	NA
WCDMA Band II	Back side	9400	RMC	1.009	1.000	1.009	NA	NA

WCDMA Band II	Bottom edge	9400	RMC	0.978	0.972	1.006	NA	NA
---------------	-------------	------	-----	-------	-------	-------	----	----

Simultaneous Transmission SAR Analysis.

List of Mode for Simultaneous Multi-band Transmission:

No.	Configurations	Head SAR	Body-worn SAR	Hotspot SAR
1	GSM(Voice) + WLAN 2.4GHz(Data)	Yes	Yes	-
2	GPRS (Data) + WLAN 2.4GHz(Data)	Yes	Yes	Yes
3	GSM(Voice) + Bluetooth(Data)	Yes	Yes	-
4	GPRS (Data) + Bluetooth(Data)	Yes	Yes	Yes
5	WCDMA (Voice) + WLAN 2.4GHz(Data)	Yes	-	-
6	WCDMA (Data) + WLAN 2.4GHz(Data)	-	Yes	Yes
7	WCDMA (Voice) + Bluetooth(Data)	Yes	-	-
8	WCDMA (Data) + Bluetooth(Data)	-	Yes	Yes

Remark:

- GSM/ WCDMA share the same antenna, and cannot transmit simultaneously.
- WLAN and Bluetooth share the same antenna, and cannot transmit simultaneously.
- According to the KDB 447498 D01 v06, when standalone SAR test exclusion applies to an antenna that transmits simultaneously with other antennas, the standalone SAR must be estimated according to following to determine simultaneous transmission SAR test exclusion:

(max. power of channel, including tune-up tolerance, mW)/(min. test separation distance, mm)]·[\sqrt{f} (GHz)/x]
W/kg for test separation distances ≤ 50 mm;

where x = 7.5 for 1-g SAR, and x = 18.75 for 10-g SAR.

For simultaneous transmission analysis, Bluetooth SAR is estimated per KDB 447498 D01 v06 as below:

Bluetooth:

Tune-Up Power (dBm)	Max. Power (mW)	Distance (mm)	Frequency (GHz)	X	SAR(1g) 5mm	SAR(1g) 10mm
8.0	6.31	5/10	2.480	7.5	0.28	0.13

- The maximum SAR summation is calculated based on the same configuration and test position

Simultaneous Transmission SAR

Head SAR Simultaneous WWAN and 2.4G WIFI

Position	WWAN (maximum)		2.4G WIFI	Summed SAR (W/kg)
	Band	Scaled SAR (W/kg)	Scaled SAR (W/kg)	
Right Cheek	GSM850	0.46	0.61	1.07
Right Tilt	GSM850	0.42	0.42	0.84
Left Cheek	GPRS850	0.47	0.34	0.81
Left Tilt	GPRS850	0.45	0.26	0.71
Right Cheek	GPRS1900	0.09	0.61	0.70
Right Tilt	GPRS1900	0.08	0.42	0.50
Left Cheek	GPRS1900	0.10	0.34	0.44
Left Tilt	GPRS1900	0.10	0.26	0.36
Right Cheek	WCDMA Band V	0.29	0.61	0.90
Right Tilt	WCDMA Band V	0.20	0.42	0.62
Left Cheek	WCDMA Band V	0.25	0.34	0.59
Left Tilt	WCDMA Band V	0.21	0.26	0.47
Right Cheek	WCDMA Band II	0.10	0.61	0.71
Right Tilt	WCDMA Band II	0.06	0.42	0.48
Left Cheek	WCDMA Band II	0.23	0.34	0.57
Left Tilt	WCDMA Band II	0.16	0.26	0.42

WWAN and BT

Position	WWAN (maximum)		BT(5mm)	Summed SAR (W/kg)
	Band	Scaled SAR (W/kg)	Scaled SAR (W/kg)	
Left Cheek	GSM850	0.47	0.28	0.75
Left Cheek	GSM1900	0.10	0.28	0.38
Right Cheek	WCDMA Band V	0.29	0.28	0.57
Left Cheek	WCDMA Band II	0.23	0.28	0.51

Remark: BT the 1g SAR value is not being captured by the measurement system, the 1g-SAR value is conservatively used for simultaneous transmission analysis.

Body-worn SAR Simultaneous WWAN and 2.4G WIFI

Position	WWAN (maximum)		2.4G WIFI(10mm)	Summed SAR (W/kg)
	Band	Scaled SAR (W/kg)	Scaled SAR (W/kg)	
Front	GPRS850	0.28	0.12	0.40
Back		0.49	0.10	0.59
Front	GPRS1900	0.58	0.12	0.70
Back		1.05	0.10	1.15
Front	WCDMA Band V	0.28	0.12	0.40
Back		0.36	0.10	0.46
Front	WCDMA Band II	0.63	0.12	0.75
Back		1.08	0.10	1.18

WWAN and BT

Position	WWAN (maximum)		BT(10mm)	Summed SAR (W/kg)
	Band	Scaled SAR (W/kg)	Scaled SAR (W/kg)	
Back	GPRS850	0.49	0.13	0.62
Back	GPRS1900	1.05	0.13	1.18
Back	WCDMA Band V	0.36	0.13	0.49
Back	WCDMA Band II	1.08	0.13	1.21

Remark: BT the 1g SAR value is not being captured by the measurement system, the 1g-SAR value is conservatively used for simultaneous transmission analysis.

Hotspot SAR Simultaneous WWAN and 2.4G WIFI

Position	WWAN (maximum)		2.4G WIFI(10mm)	Summed SAR (W/kg)
	Band	Scaled SAR (W/kg)	Scaled SAR (W/kg)	
Front	GPRS850	0.28	0.12	0.40
Back		0.49	0.10	0.59
Right		0.20	-	0.20
Left		0.16	0.04	0.20
Top		-	0.06	0.06
Bottom		0.16	-	0.16
Front	GPRS1900	0.58	0.12	0.70
Back		1.05	0.10	1.15
Right		0.30	-	0.30
Left		0.29	0.04	0.33
Top		-	0.06	0.06
Bottom		0.22	-	0.22
Front	WCDMA Band V	0.28	0.12	0.40
Back		0.36	0.10	0.46
Right		0.22	-	0.22
Left		0.22	0.04	0.26
Top		-	0.06	0.06
Bottom		0.14	-	0.14
Front	WCDMA Band II	0.63	0.12	0.75
Back		1.08	0.10	1.18
Right		0.11	-	0.11
Left		0.14	0.04	0.18
Top		-	0.06	0.06
Bottom		1.05	-	1.05

WWAN and BT

Position	WWAN (maximum)		BT(10mm)	Summed SAR (W/kg)
	Band	Scaled SAR (W/kg)	Scaled SAR (W/kg)	
Back	GPRS850	0.49	0.13	0.52
Back	GPRS1900	1.05	0.13	1.18
Back	WCDMA Band V	0.36	0.13	0.49
Back	WCDMA Band II	1.08	0.13	1.21

Remark: BT the 1g SAR value is not being captured by the measurement system, the 1g-SAR value is conservatively used for simultaneous transmission analysis.

14 SAR Measurement Reference

References

1. FCC 47 CFR Part 2 “Frequency Allocations and Radio Treaty Matters; General Rules and Regulations”
2. IEEE Std. C95.1-2005, “IEEE Standard for Safety Levels with Respect to Human Exposure to Radio Frequency Electromagnetic Fields, 3kHz to 300GHz”, 2005
3. IEEE Std. 1528-2013, “IEEE Recommended Practice for Determining the Peak Spatial-Average Specific Absorption Rate (SAR) in the Human Head from Wireless Communications Devices: Measurement Techniques”, June 2013
4. IEC 62209-2, “Human exposure to radio frequency fields from hand-held and body-mounted wireless communication devices—Human models, instrumentation, and procedures – Part 2: Procedure to determine the specific absorption rate(SAR) for wireless communication devices used in close proximity to the human body(frequency range of 30MHz to 6GHz)”, April 2010
5. FCC KDB 447498 D01 v06, “Mobile and Portable Device RF Exposure Procedures and Equipment Authorization Policies”, Oct 23th, 2015
6. FCC KDB 941225 D01 v03r01, “3G SAR Measurement Procedures”, Oct 23th, 2015
7. FCC KDB 941225 D06 v02r01, “SAR Evaluation Procedures for Portable Devices with Wireless Router Capabilities”, Oct 23th, 2015
8. FCC KDB865664 D01 v01r04, “SAR Measurement Requirements 100MHz to 6GHz”, Aug 7th, 2015
9. FCC KDB865664 D02 v01r02, “RF Exposure Compliance Reporting and Documentation Considerations ”, Oct 23th, 2015
10. FCC KDB648474 D04 v01r03, “SAR Evaluation Considerations for Wireless Handsets”, Oct 23th, 2015
11. FCC KDB 248227 D01 v02r02, SAR Guidance for IEEE 802.11 (Wi-Fi) Transmitters, Oct 23th, 2015.
12. FCC KDB 248227 D01 v02r02, SAR Guidance for IEEE 802.11 (Wi-Fi) Transmitters, Oct 23th, 2015.

Maximum SAR measurement Plots

Plot 1: GPRS850MHz, Low channel (Right Head , Cheek)

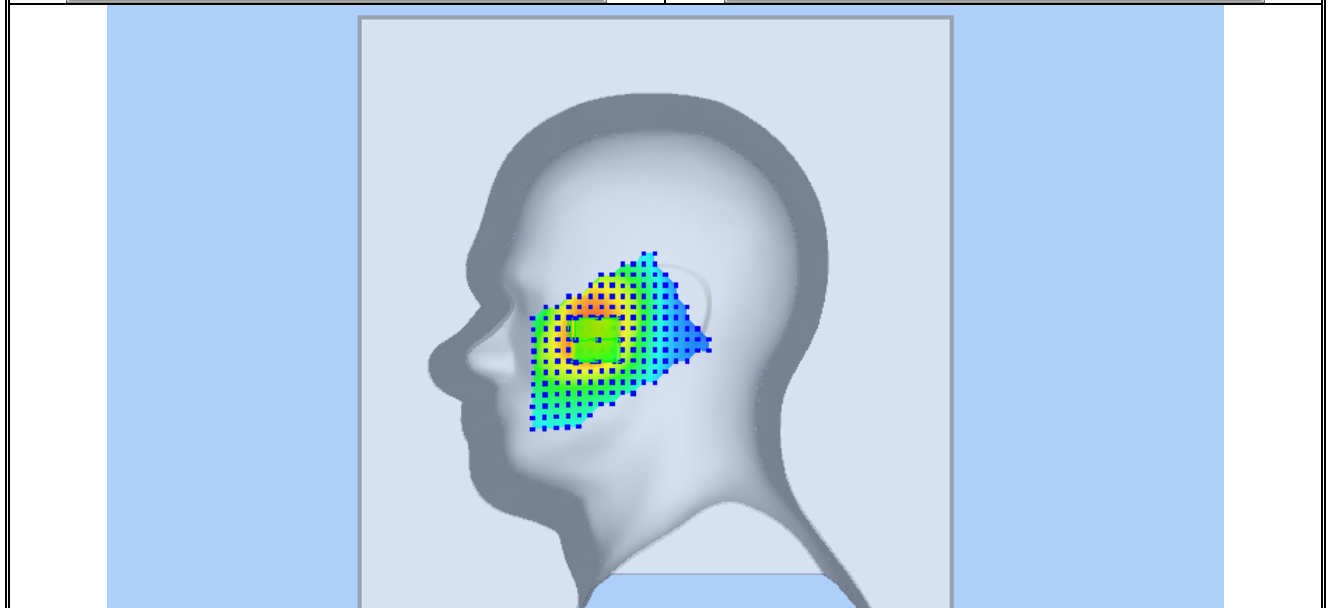
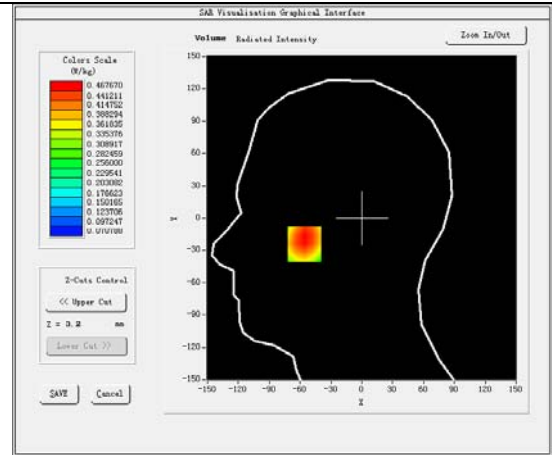
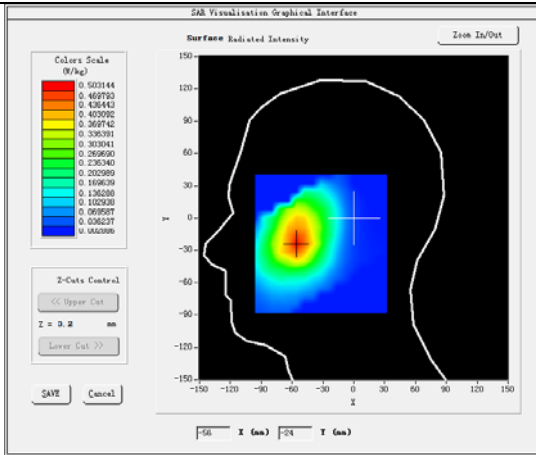
Product Description:SMARTPHONE

Test Date:2021-03-02

Medium(liquid type)	HSL_850
Frequency (MHz)	824.20000
Relative permittivity (real part)	41.78
Conductivity (S/m)	0.92
Signal	GSM (Duty cycle: 1:8)
E-Field Probe	SN 07/15 EP247
Conversion Factor	4.99
Area Scan	dx=8mm dy=8mm
Zoom Scan	5x5x7,dx=8mm dy=8mm dz=5mm
Variation (%)	-1.69
SAR 10g (W/Kg)	0.331848
SAR 1g (W/Kg)	0.452719

SURFACE SAR

VOLUME SAR

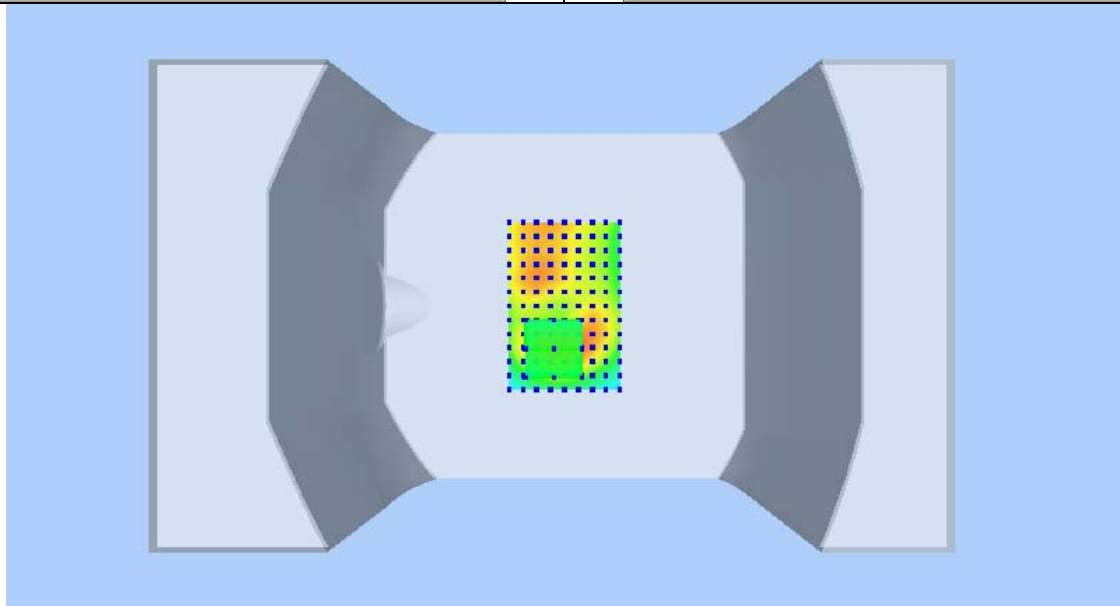
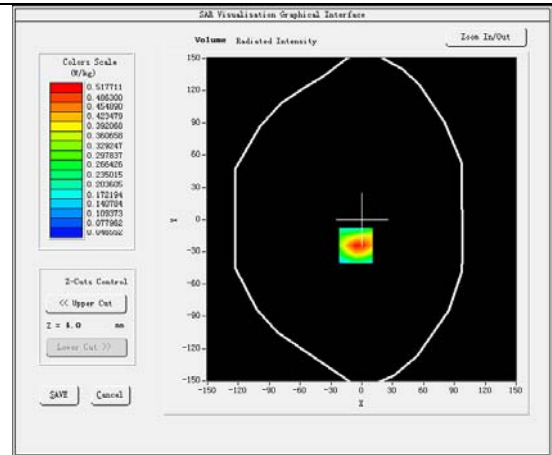
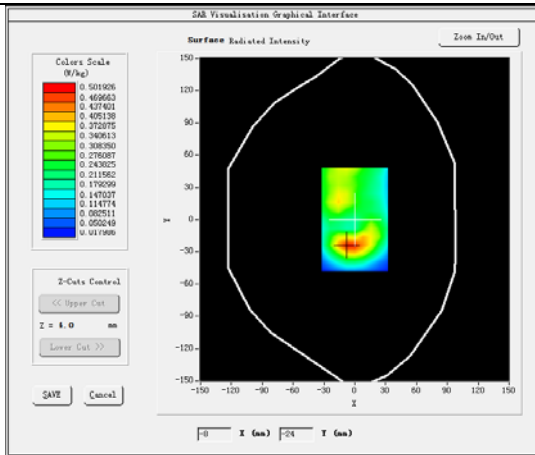


Plot 2: GPRS850MHz, High channel (Body-worn/Hotspot, Back Surface)
Product Description:SMARTPHONE
Test Date: 2021-03-02

Medium(liquid type)	MSL 850
Frequency (MHz)	848.80000
Relative permittivity (real part)	55.55
Conductivity (S/m)	0.99
Signal	GPRS (Duty cycle: 1:2)
E-Field Probe	SN 07/15 EP247
Conversion Factor	5.18
Area Scan	dx=8mm dy=8mm
Zoom Scan	5x5x7,dx=8mm dy=8mm dz=5mm
Variation (%)	-2.75
SAR 10g (W/Kg)	0.280135
SAR 1g (W/Kg)	0.485292

SURFACE SAR

VOLUME SAR



Plot 3: GPRS1900, Middle channel (Left Head Cheek)

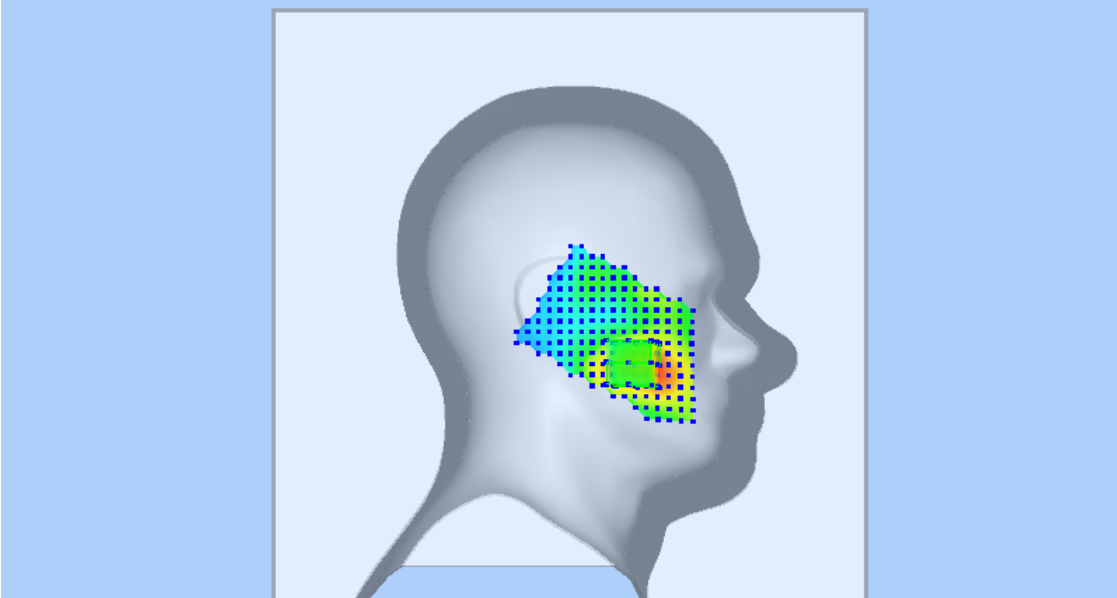
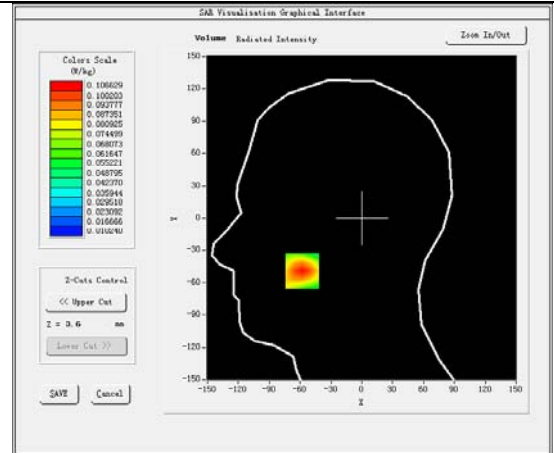
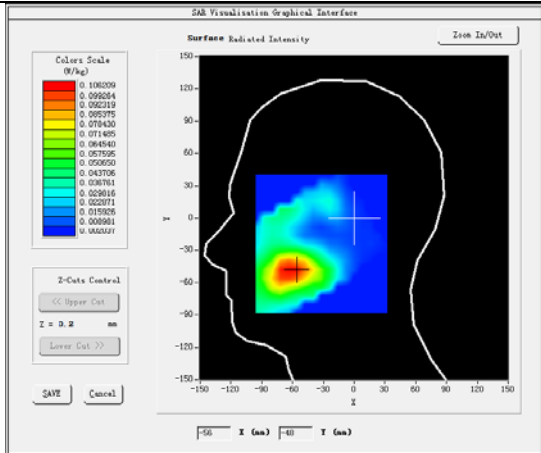
Product Description: SMARTPHONE

Test Date: 2021-03-09

Medium(liquid type)	HSL_1900
Frequency (MHz)	1880.0000
Relative permittivity (real part)	40.79
Conductivity (S/m)	1.41
Signal	GSM (Duty cycle: 1:8)
E-Field Probe	SN 07/15 EP247
Conversion Factor	4.73
Sensor-Surface	4mm
Area Scan	dx=8mm dy=8mm
Zoom Scan	5x5x7,dx=8mm dy=8mm dz=5mm
Variation (%)	-0.77
SAR 10g (W/Kg)	0.064404
SAR 1g (W/Kg)	0.100565

SURFACE SAR

VOLUME SAR



Plot 4: GPRS1900, Low channel (Body-worn/Hotspot, Back Surface)

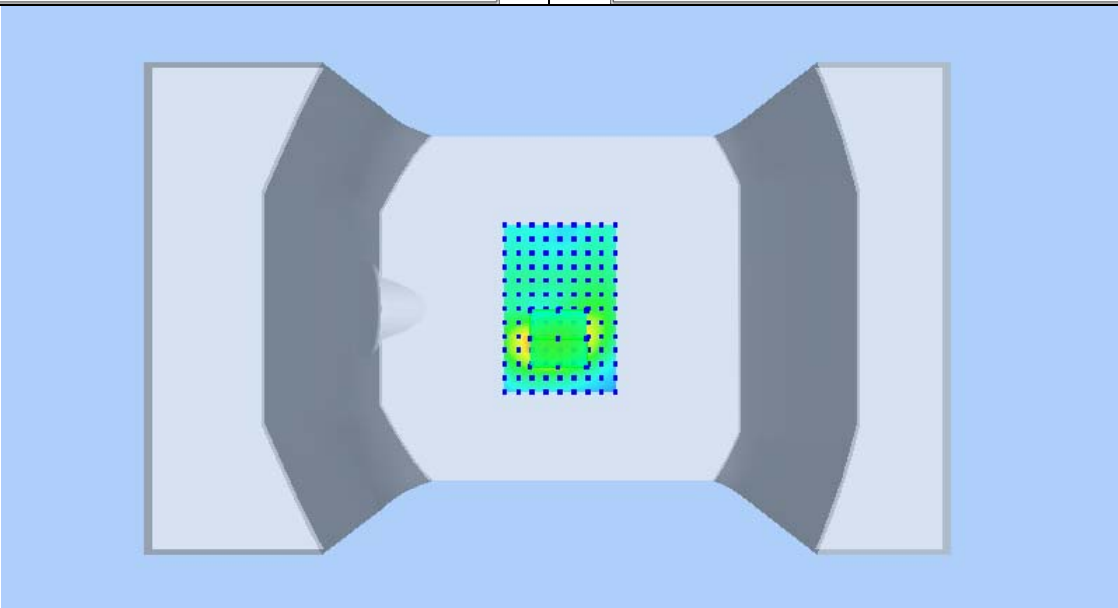
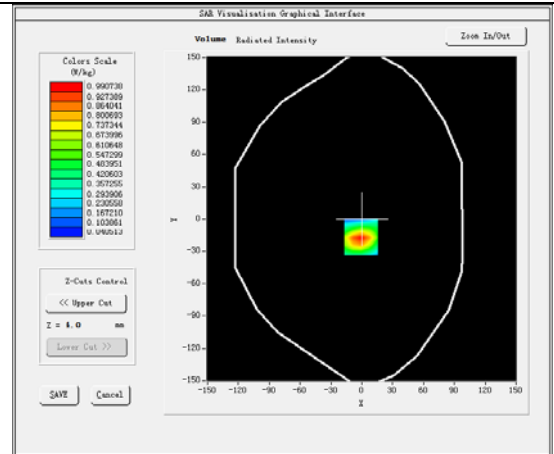
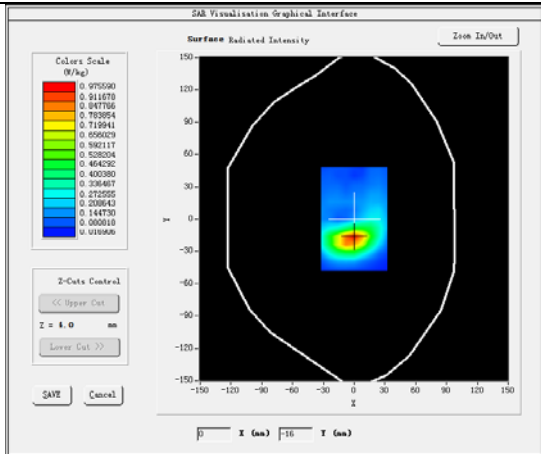
Product Description: SMARTPHONE

Test Date: 2021-03-09

Medium(liquid type)	MSL_1900
Frequency (MHz)	1850.2000
Relative permittivity (real part)	53.66
Conductivity (S/m)	1.51
Signal	GPRS (Duty cycle: 1:2)
E-Field Probe	SN 07/15 EP247
Conversion Factor	4.83
Sensor-Surface	4mm
Area Scan	dx=8mm dy=8mm
Zoom Scan	5x5x7,dx=8mm dy=8mm dz=5mm
Variation (%)	1.38
SAR 10g (W/Kg)	0.494448
SAR 1g (W/Kg)	0.919117

SURFACE SAR

VOLUME SAR



Plot 5: WCDMA BAND V, Low channel (Right Head Cheek)

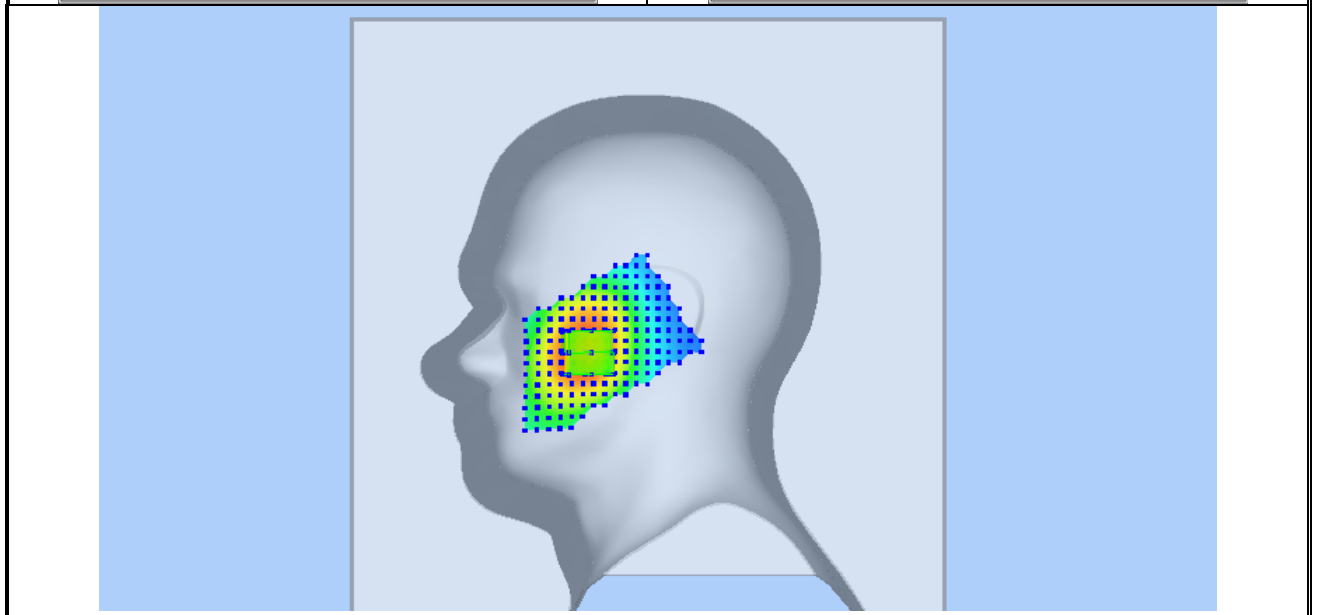
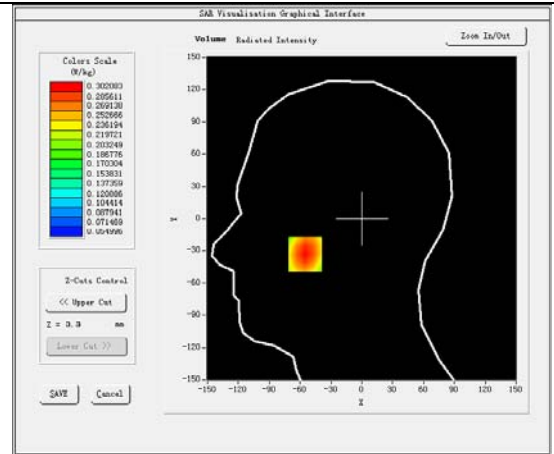
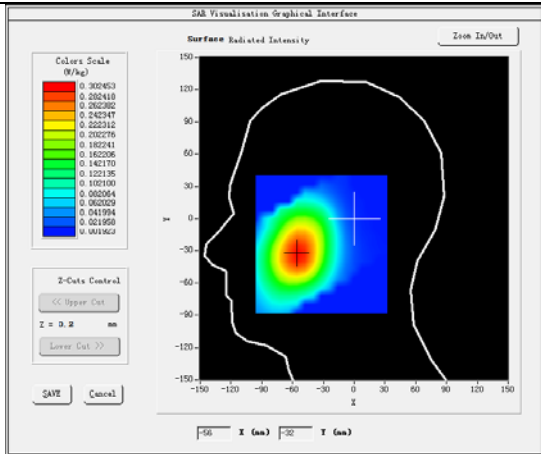
Product Description: SMARTPHONE

Test Date: 2021-03-02

Medium(liquid type)	HSL_850
Frequency (MHz)	826.40000
Relative permittivity (real part)	41.78
Conductivity (S/m)	0.92
Signal	WCDMA (Duty cycle: 1:1)
E-Field Probe	SN 07/15 EP247
Conversion Factor	4.99
Sensor-Surface	4mm
Area Scan	dx=8mm dy=8mm
Zoom Scan	5x5x7,dx=8mm dy=8mm dz=5mm
Variation (%)	2.38
SAR 10g (W/Kg)	0.209768
SAR 1g (W/Kg)	0.289960

SURFACE SAR

VOLUME SAR



Plot 6: WCDMA BAND V, Low channel (Body-worn/Hotspot, Back Surface)

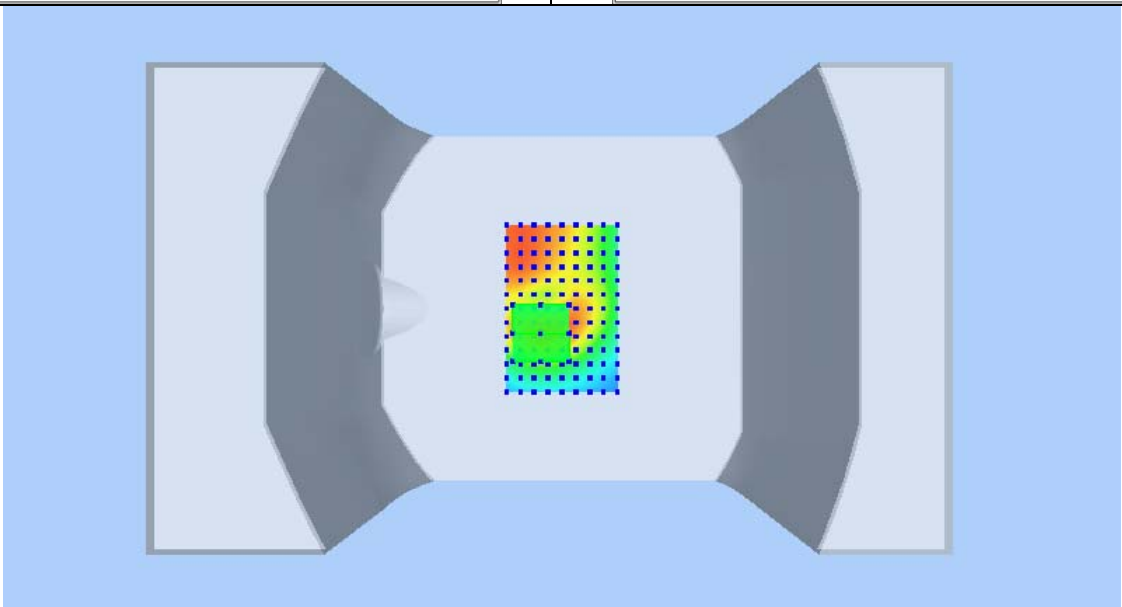
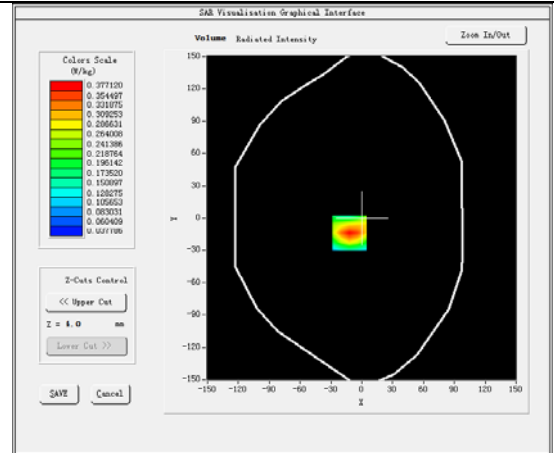
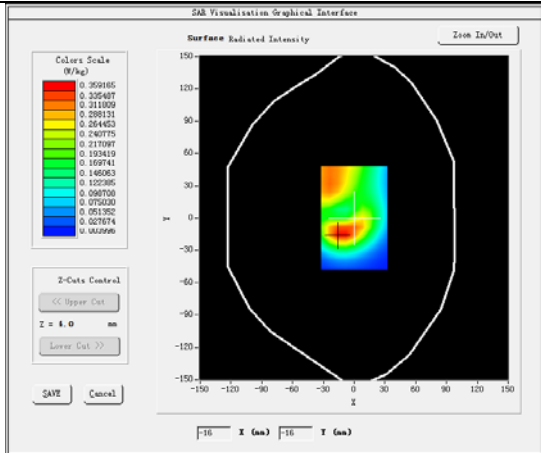
Product Description: SMARTPHONE

Test Date: 2021-03-02

Medium(liquid type)	MSL_850
Frequency (MHz)	826.4000
Relative permittivity (real part)	55.55
Conductivity (S/m)	0.98
Signal	WCDMA (Duty cycle: 1:1)
E-Field Probe	SN 07/15 EP247
Conversion Factor	5.18
Sensor-Surface	4mm
Area Scan	dx=8mm dy=8mm
Zoom Scan	5x5x7,dx=8mm dy=8mm dz=5mm
Variation (%)	-0.02
SAR 10g (W/Kg)	0.206202
SAR 1g (W/Kg)	0.351665

SURFACE SAR

VOLUME SAR

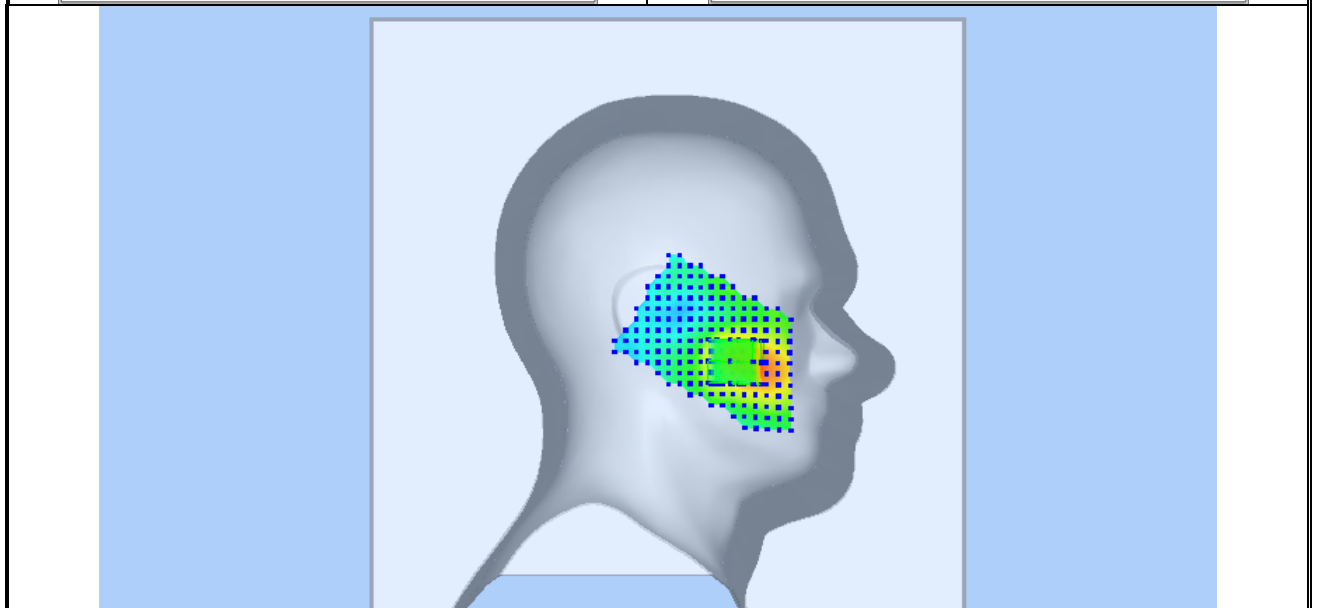
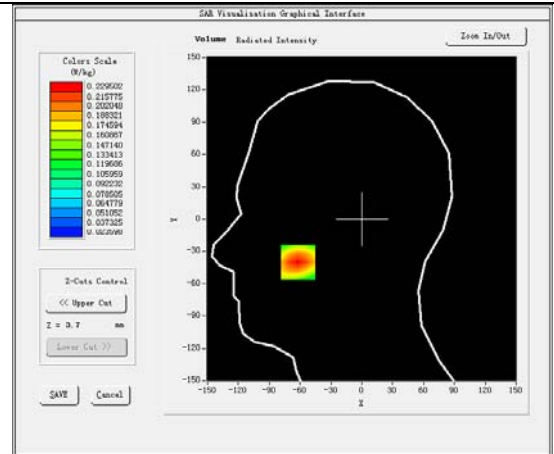
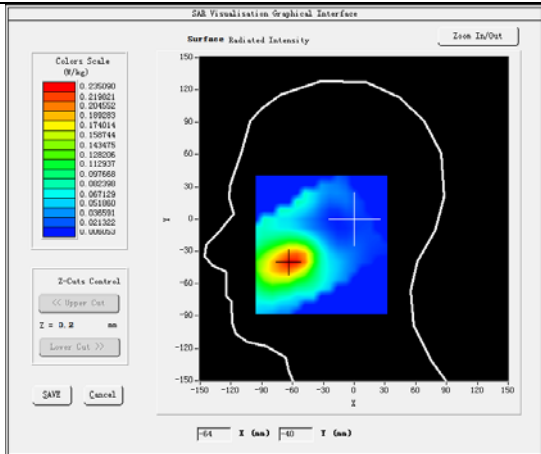


Plot 7: WCDMA BAND II, Middle channel (Left Head Cheek)
Product Description: SMARTPHONE
Test Date: 2021-03-09

Medium(liquid type)	HSL_1900
Frequency (MHz)	1880.0000
Relative permittivity (real part)	40.79
Conductivity (S/m)	1.41
Signal	WCDMA(Duty cycle: 1:1)
E-Field Probe	SN 07/15 EP247
Conversion Factor	4.73
Sensor-Surface	4mm
Area Scan	dx=8mm dy=8mm
Zoom Scan	5x5x7,dx=8mm dy=8mm dz=5mm
Variation (%)	3.48
SAR 10g (W/Kg)	0.139255
SAR 1g (W/Kg)	0.217395

SURFACE SAR

VOLUME SAR

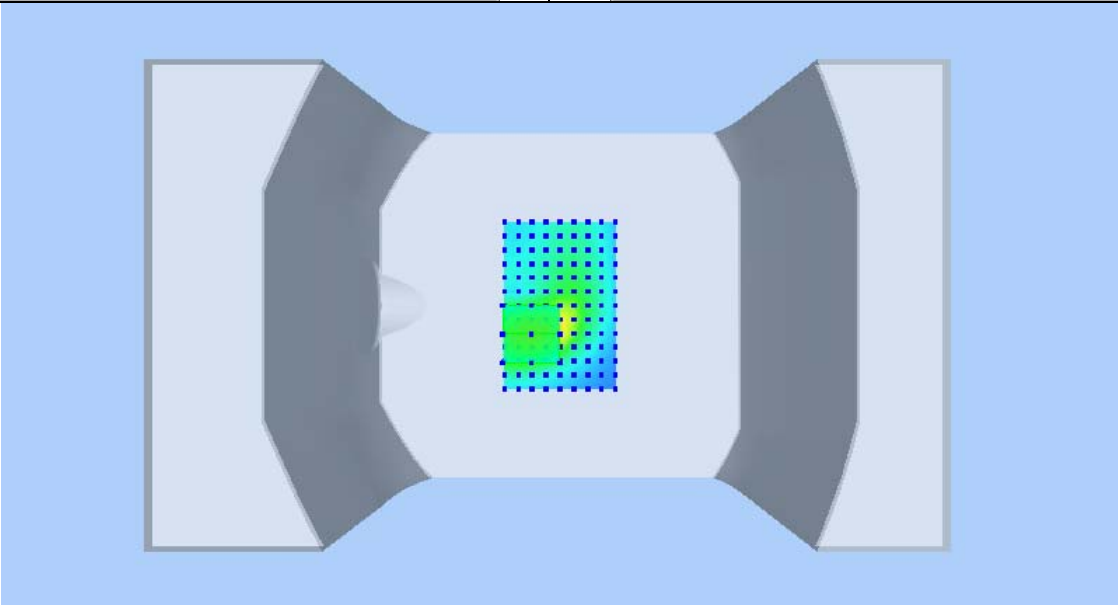
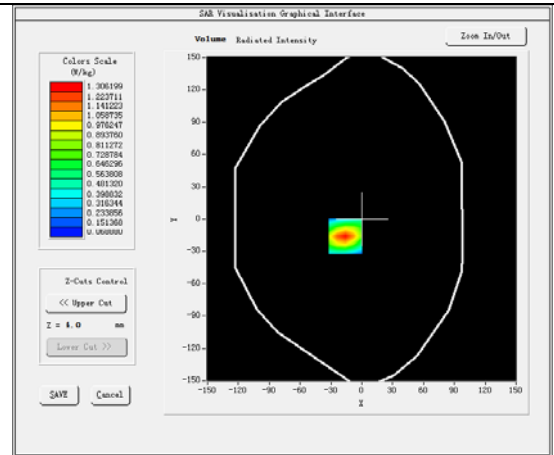
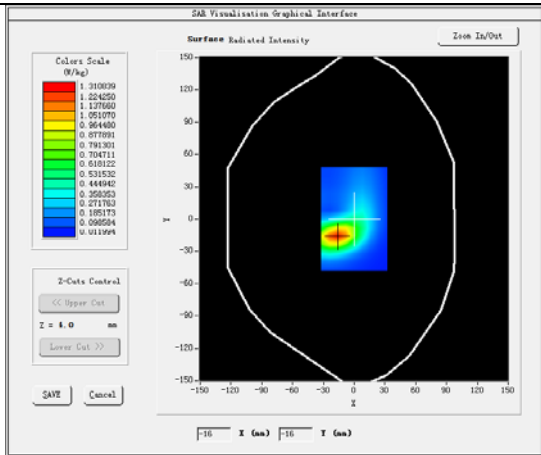


Plot 8: WCDMA BAND II, Middle channel (Body-worn/Hotspot, Back Surface)
Product Description: SMARTPHONE
Test Date: 2021-03-09

Medium(liquid type)	MSL_1900
Frequency (MHz)	1880.0000
Relative permittivity (real part)	53.66
Conductivity (S/m)	1.51
Signal	WCDMA(Duty cycle: 1:1)
E-Field Probe	SN 07/15 EP247
Conversion Factor	4.83
Sensor-Surface	4mm
Area Scan	dx=8mm dy=8mm
Zoom Scan	5x5x7,dx=8mm dy=8mm dz=5mm
Variation (%)	-0.57
SAR 10g (W/Kg)	0.668507
SAR 1g (W/Kg)	1.008563

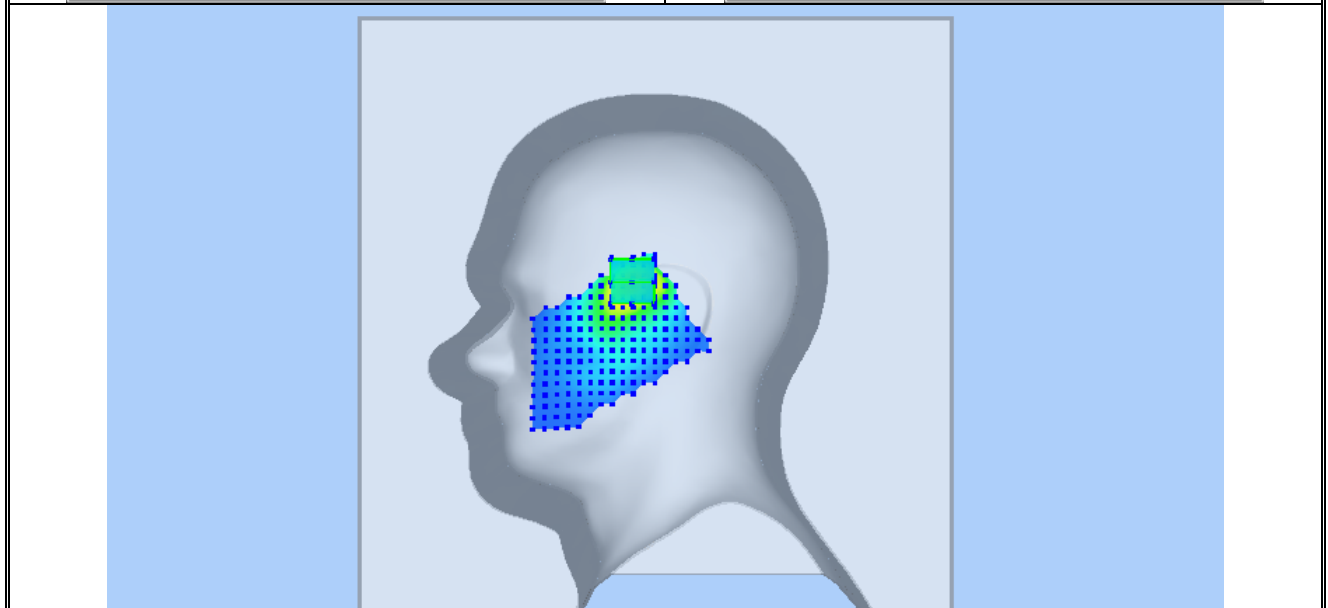
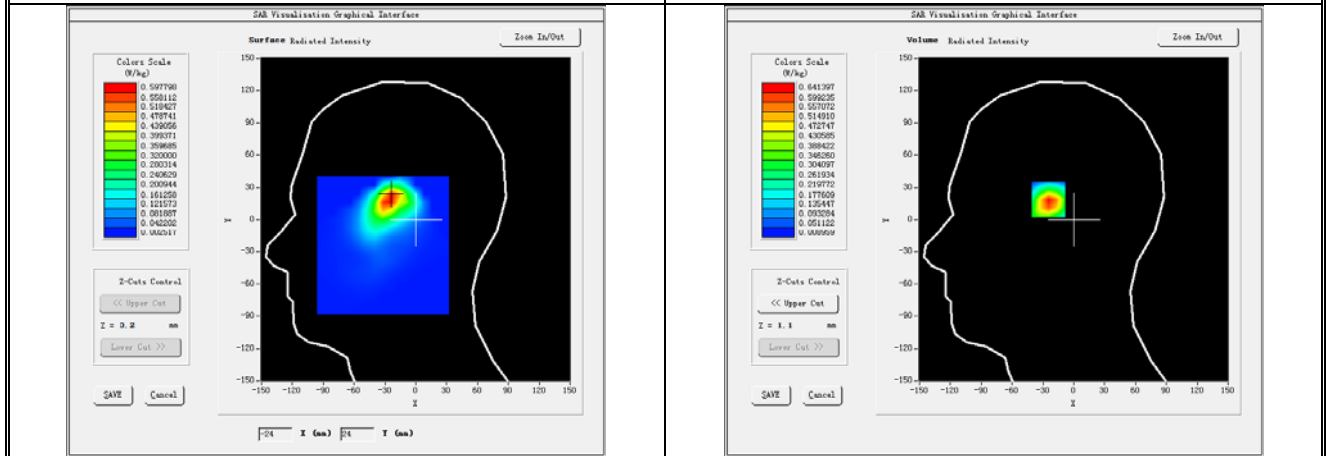
SURFACE SAR

VOLUME SAR



Plot 9:802.11b, High channel (Right Head Cheek)
Product Description: SMARTPHONE
Test Date: 2021-03-06

Medium(liquid type)	HSL_2450
Frequency (MHz)	2462.0000
Relative permittivity (real part)	39.59
Conductivity (S/m)	1.88
Signal	Duty cycle: 1:1
E-Field Probe	SN 07/15 EP247
Conversion Factor	4.46
Bandwidth(MHz)	20
RB Allocation	1
RB Offset	49
Area Scan	dx=8mm dy=8mm
Zoom Scan	5x5x7,dx=8mm dy=8mm dz=5mm
Variation (%)	0.53
SAR 10g (W/Kg)	0.277421
SAR 1g (W/Kg)	0.607305
SURFACE SAR	VOLUME SAR

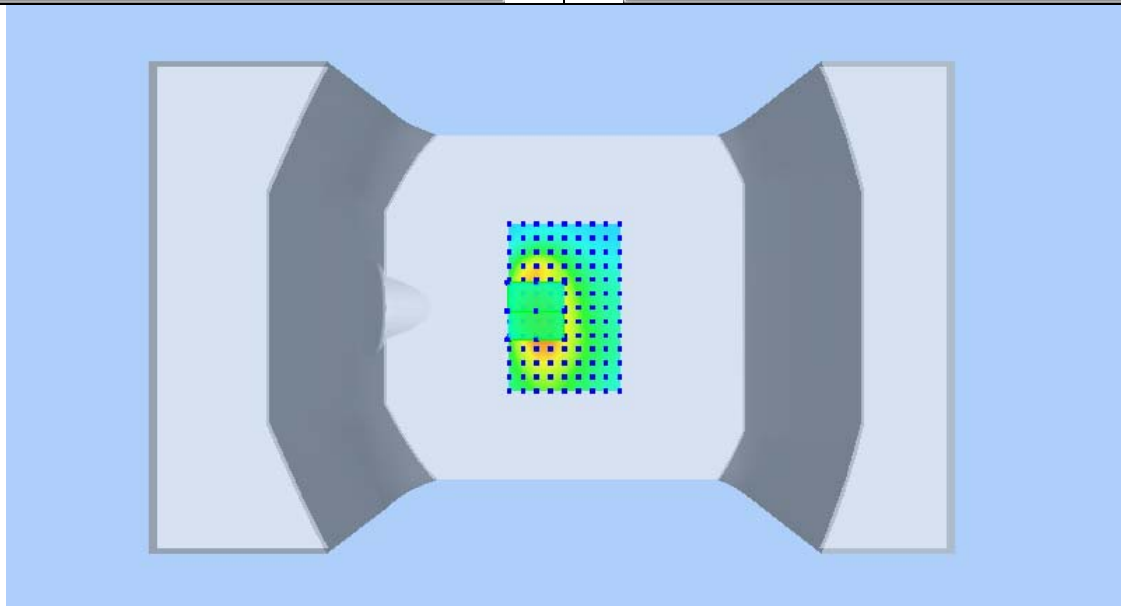
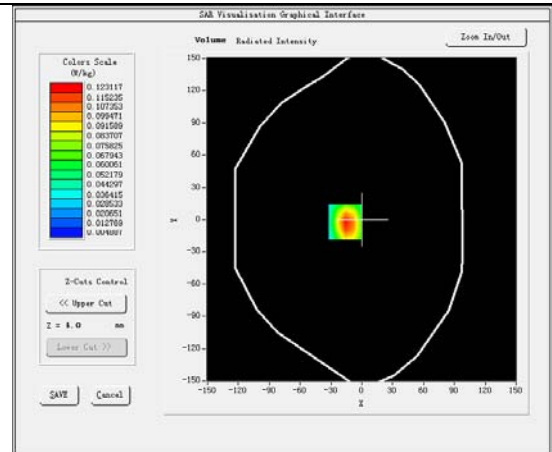
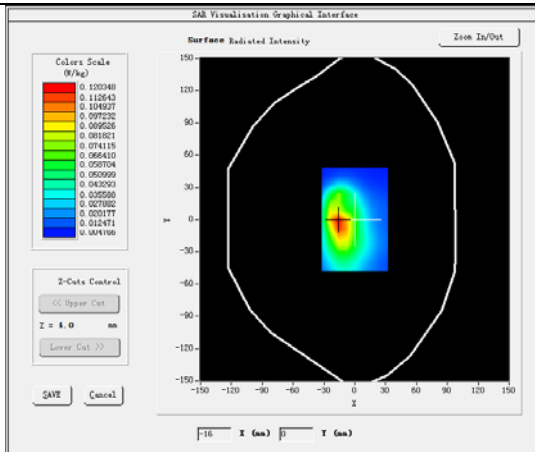


Plot 10:802.11b, High channel (Body-worn/Hotspot, Front Surface)

Product Description: SMARTPHONE

Test Date: 2021-03-06

Medium(liquid type)	MSL_2450
Frequency (MHz)	2462.0000
Relative permittivity (real part)	53.06
Conductivity (S/m)	1.90
Signal	Duty cycle: 1:1
E-Field Probe	SN 07/15 EP247
Conversion Factor	4.61
Bandwidth(MHz)	20
RB Allocation	1
RB Offset	49
Area Scan	dx=8mm dy=8mm
Zoom Scan	5x5x7,dx=8mm dy=8mm dz=5mm
Variation (%)	-0.34
SAR 10g (W/Kg)	0.062765
SAR 1g (W/Kg)	0.115490
SURFACE SAR	VOLUME SAR



15 Calibration Reports-Probe and Dipole



COMOSAR E-Field Probe Calibration Report

Ref : ACR.64.1.22.SATU.A

WALTEK TESTING GROUP CO., LTD.
NO.77, HOUIE SECTION, GUANTAI ROAD, HOUIE TOWN,
DONGGUAN GUANGDONG 518105 , CHINA
MVG COMOSAR DOSIMETRIC E-FIELD PROBE
SERIAL NO.: SN 22/16 EP310

Calibrated at MVG US
2105 Barrett Park Dr. - Kennesaw, GA 30144



Calibration Date: 08/29/20

Summary:

This document presents the method and results from an accredited COMOSAR Dosimetric E-Field Probe calibration performed in MVG USA using the CALISAR / CALIBAIR test bench, for use with a COMOSAR system only. All calibration results are traceable to national metrology institutions.



COMOSAR E-FIELD PROBE CALIBRATION REPORT

Ref: ACR.64.1.22.SATU.A

	<i>Name</i>	<i>Function</i>	<i>Date</i>	<i>Signature</i>
<i>Prepared by :</i>	Jérôme LUC	Product Manager	8/30/2020	<i>JS</i>
<i>Checked by :</i>	Jérôme LUC	Product Manager	8/30/2020	<i>JS</i>
<i>Approved by :</i>	Kim RUTKOWSKI	Quality Manager	8/30/2020	<i>Kim Rutkowski</i>

	<i>Customer Name</i>
<i>Distribution :</i>	Waltek Testing Group Co.,Ltd

<i>Issue</i>	<i>Date</i>	<i>Modifications</i>
A	8/30/2020	Initial release

Page: 2/9

*This document shall not be reproduced, except in full or in part, without the written approval of MVG.
The information contained herein is to be used only for the purpose for which it is submitted and is not to be released in whole or part without written approval of MVG.*



COMOSAR E-FIELD PROBE CALIBRATION REPORT

Ref: ACR.64.1.22.SATU.A

TABLE OF CONTENTS

1	Device Under Test	4
2	Product Description	4
2.1	General Information	4
3	Measurement Method	4
3.1	Linearity	4
3.2	Sensitivity	5
3.3	Lower Detection Limit	5
3.4	Isotropy	5
3.5	Boundary Effect	5
4	Measurement Uncertainty	5
5	Calibration Measurement Results	6
5.1	Sensitivity in air	6
5.2	Linearity	7
5.3	Sensitivity in liquid	7
5.4	Isotropy	8
6	List of Equipment	10

Page: 3/9

*This document shall not be reproduced, except in full or in part, without the written approval of MVG.
The information contained herein is to be used only for the purpose for which it is submitted and is not to be released in whole or part without written approval of MVG.*



COMOSAR E-FIELD PROBE CALIBRATION REPORT

Ref: ACR.64.1.22.SATU.A

1 DEVICE UNDER TEST

Device Under Test	
Device Type	COMOSAR DOSIMETRIC E FIELD PROBE
Manufacturer	MVG
Model	SSE5
Serial Number	SN 22/16 EP310
Product Condition (new / used)	New
Frequency Range of Probe	0.45 GHz-3GHz
Resistance of Three Dipoles at Connector	Dipole 1: R1=0.216 MΩ Dipole 2: R2=0.217 MΩ Dipole 3: R3=0.222 MΩ

A yearly calibration interval is recommended.

2 PRODUCT DESCRIPTION**2.1 GENERAL INFORMATION**

MVG's COMOSAR E field Probes are built in accordance to the IEEE 1528, OET 65 Bulletin C and CEI/IEC 62209 standards.



Figure 1 – MVG COMOSAR Dosimetric E field Dipole

Probe Length	330 mm
Length of Individual Dipoles	4.5 mm
Maximum external diameter	8 mm
Probe Tip External Diameter	5 mm
Distance between dipoles / probe extremity	2.7mm

3 MEASUREMENT METHOD

The IEEE 1528, OET 65 Bulletin C, CENELEC EN50361 and CEI/IEC 62209 standards provide recommended practices for the probe calibrations, including the performance characteristics of interest and methods by which to assess their affect. All calibrations / measurements performed meet the fore mentioned standards.

3.1 LINEARITY

The evaluation of the linearity was done in free space using the waveguide, performing a power sweep to cover the SAR range 0.01W/kg to 100W/kg.

Page: 4/9

*This document shall not be reproduced, except in full or in part, without the written approval of MVG.
The information contained herein is to be used only for the purpose for which it is submitted and is not to be released in whole or part without written approval of MVG.*



3.2 SENSITIVITY

The sensitivity factors of the three dipoles were determined using a two step calibration method (air and tissue simulating liquid) using waveguides as outlined in the standards.

3.3 LOWER DETECTION LIMIT

The lower detection limit was assessed using the same measurement set up as used for the linearity measurement. The required lower detection limit is 10 mW/kg.

3.4 ISOTROPY

The axial isotropy was evaluated by exposing the probe to a reference wave from a standard dipole with the dipole mounted under the flat phantom in the test configuration suggested for system validations and checks. The probe was rotated along its main axis from 0 - 360 degrees in 15 degree steps. The hemispherical isotropy is determined by inserting the probe in a thin plastic box filled with tissue-equivalent liquid, with the plastic box illuminated with the fields from a half wave dipole. The dipole is rotated about its axis (0°–180°) in 15° increments. At each step the probe is rotated about its axis (0°–360°).

3.5 BOUNDARY EFFECT

The boundary effect is defined as the deviation between the SAR measured data and the expected exponential decay in the liquid when the probe is oriented normal to the interface. To evaluate this effect, the liquid filled flat phantom is exposed to fields from either a reference dipole or waveguide. With the probe normal to the phantom surface, the peak spatial average SAR is measured and compared to the analytical value at the surface.

4 MEASUREMENT UNCERTAINTY

The guidelines outlined in the IEEE 1528, OET 65 Bulletin C, CENELEC EN50361 and CEI/IEC 62209 standards were followed to generate the measurement uncertainty associated with an E-field probe calibration using the waveguide technique. All uncertainties listed below represent an expanded uncertainty expressed at approximately the 95% confidence level using a coverage factor of k=2, traceable to the Internationally Accepted Guides to Measurement Uncertainty.

Uncertainty analysis of the probe calibration in waveguide					
ERROR SOURCES	Uncertainty value (%)	Probability Distribution	Divisor	ci	Standard Uncertainty (%)
Incident or forward power	3.00%	Rectangular	$\sqrt{3}$	1	1.732%
Reflected power	3.00%	Rectangular	$\sqrt{3}$	1	1.732%
Liquid conductivity	5.00%	Rectangular	$\sqrt{3}$	1	2.887%
Liquid permittivity	4.00%	Rectangular	$\sqrt{3}$	1	2.309%
Field homogeneity	3.00%	Rectangular	$\sqrt{3}$	1	1.732%
Field probe positioning	5.00%	Rectangular	$\sqrt{3}$	1	2.887%

Page: 5/9

*This document shall not be reproduced, except in full or in part, without the written approval of MVG.
The information contained herein is to be used only for the purpose for which it is submitted and is not to be released in whole or part without written approval of MVG.*



COMOSAR E-FIELD PROBE CALIBRATION REPORT

Ref: ACR.64.1.22.SATU.A

Field probe linearity	3.00%	Rectangular	$\sqrt{3}$	1	1.732%
Combined standard uncertainty					5.831%
Expanded uncertainty 95 % confidence level k = 2					12.0%

5 CALIBRATION MEASUREMENT RESULTS

Calibration Parameters	
Liquid Temperature	21 °C
Lab Temperature	21 °C
Lab Humidity	45 %

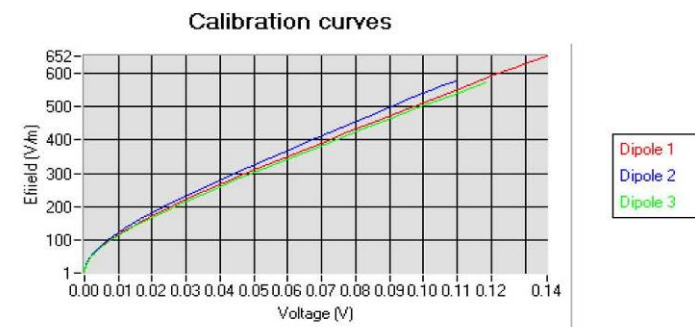
5.1 SENSITIVITY IN AIR

Normx dipole 1 ($\mu\text{V}/(\text{V}/\text{m})^2$)	Normy dipole 2 ($\mu\text{V}/(\text{V}/\text{m})^2$)	Normz dipole 3 ($\mu\text{V}/(\text{V}/\text{m})^2$)
0.89	0.63	0.72

DCP dipole 1 (mV)	DCP dipole 2 (mV)	DCP dipole 3 (mV)
93	93	90

Calibration curves $e_i=f(V)$ ($i=1,2,3$) allow to obtain H-field value using the formula:

$$E = \sqrt{E_1^2 + E_2^2 + E_3^2}$$



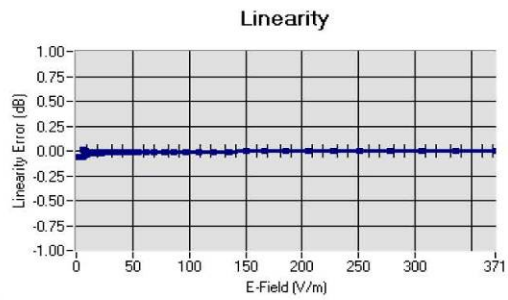
Page: 6/9

*This document shall not be reproduced, except in full or in part, without the written approval of MVG.
The information contained herein is to be used only for the purpose for which it is submitted and is not to be released in whole or part without written approval of MVG.*



COMOSAR E-FIELD PROBE CALIBRATION REPORT

Ref: ACR.64.1.22.SATU.A

5.2 LINEARITYLinearity: $\pm 1.42\%$ ($\pm 0.06\text{dB}$)5.3 SENSITIVITY IN LIQUID

Liquid	Frequency (MHz \pm 100MHz)	Permittivity	Epsilon (S/m)	ConvF
HL750	750	40.03	0.93	1.87
BL750	750	56.83	1.00	1.93
HL850	835	42.19	0.90	1.92
BL850	835	54.67	1.01	1.99
HL900	900	42.08	1.01	1.90
BL900	900	55.25	1.08	1.97
HL1800	1800	41.68	1.46	2.14
BL1800	1800	53.86	1.46	2.22
HL1900	1900	38.45	1.45	2.34
BL1900	1900	53.32	1.56	2.39
HL2000	2000	38.26	1.38	2.30
BL2000	2000	52.70	1.51	2.36
HL2450	2450	37.50	1.80	2.37
BL2450	2450	53.22	1.89	2.46
HL2600	2600	39.80	1.99	2.35
BL2600	2600	52.52	2.23	2.43

LOWER DETECTION LIMIT: 7mW/kg

Page: 7/9

*This document shall not be reproduced, except in full or in part, without the written approval of MVG.
The information contained herein is to be used only for the purpose for which it is submitted and is not to be released in whole or part without written approval of MVG.*



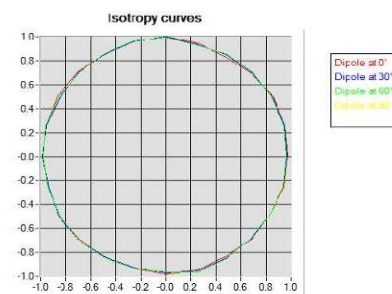
COMOSAR E-FIELD PROBE CALIBRATION REPORT

Ref: ACR.64.1.22.SATU.A

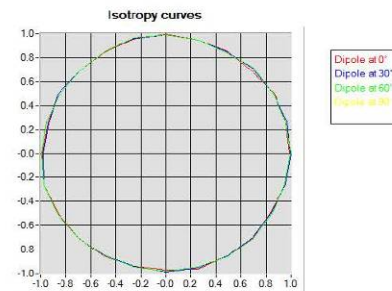
5.4 ISOTROPY

HL900 MHz

- Axial isotropy: 0.05 dB
- Hemispherical isotropy: 0.08 dB

**HL1800 MHz**

- Axial isotropy: 0.04 dB
- Hemispherical isotropy: 0.08 dB



Page: 8/9

*This document shall not be reproduced, except in full or in part, without the written approval of MVG.
The information contained herein is to be used only for the purpose for which it is submitted and is not to
be released in whole or part without written approval of MVG.*



COMOSAR E-FIELD PROBE CALIBRATION REPORT

Ref: ACR.64.1.22.SATU.A

6 LIST OF EQUIPMENT

Equipment Summary Sheet				
Equipment Description	Manufacturer / Model	Identification No.	Current Calibration Date	Next Calibration Date
Flat Phantom	MVG	SN-20/09-SAM71	Validated. No cal required.	Validated. No cal required.
COMOSAR Test Bench	Version 3	NA	Validated. No cal required.	Validated. No cal required.
Network Analyzer	Rhode & Schwarz ZVA	SN100132	02/2019	02/2022
Reference Probe	MVG	EP 94 SN 37/08	10/2019	10/2021
Multimeter	Keithley 2000	1188656	01/2020	01/2023
Signal Generator	Agilent E4438C	MY49070581	01/2020	01/2023
Amplifier	Aethercomm	SN 046	Characterized prior to test. No cal required.	Characterized prior to test. No cal required.
Power Meter	HP E4418A	US38261498	01/2020	01/2023
Power Sensor	HP ECP-E26A	US37181460	01/2020	01/2023
Directional Coupler	Narda 4216-20	01386	Characterized prior to test. No cal required.	Characterized prior to test. No cal required.
Waveguide	Mega Industries	069Y7-158-13-712	Validated. No cal required.	Validated. No cal required.
Waveguide Transition	Mega Industries	069Y7-158-13-701	Validated. No cal required.	Validated. No cal required.
Waveguide Termination	Mega Industries	069Y7-158-13-701	Validated. No cal required.	Validated. No cal required.
Temperature / Humidity Sensor	Control Company	150798832	11/2020	11/2023

Page: 9/9

*This document shall not be reproduced, except in full or in part, without the written approval of MVG.
The information contained herein is to be used only for the purpose for which it is submitted and is not to be released in whole or part without written approval of MVG.*



SAR Reference Dipole Calibration Report

Ref : ACR.94.3.20.SATU.A

WALTEK TESTING GROUP CO., LTD.
NO.77, HOUIE SECTION, GUANTAI ROAD, HOUIE TOWN,
DONGGUAN GUANGDONG 518105 , CHINA
MVG COMOSAR REFERENCE DIPOLE

FREQUENCY: 835 MHZ
SERIAL NO.: SN 09/15 DIP 0G835-358

Calibrated at MVG US
2105 Barrett Park Dr. - Kennesaw, GA 30144



Calibration Date: 08/29/20

Summary:

This document presents the method and results from an accredited SAR reference dipole calibration performed in MVG USA using the COMOSAR test bench. All calibration results are traceable to national metrology institutions.



SAR REFERENCE DIPOLE CALIBRATION REPORT

Ref: ACR.94.3.20.SATU.A

	<i>Name</i>	<i>Function</i>	<i>Date</i>	<i>Signature</i>
<i>Prepared by :</i>	Jérôme LUC	Product Manager	8/30/2020	<i>JL</i>
<i>Checked by :</i>	Jérôme LUC	Product Manager	8/30/2020	<i>JL</i>
<i>Approved by :</i>	Kim RUTKOWSKI	Quality Manager	8/30/2020	<i>Kim Rutkowski</i>

	<i>Customer Name</i>
<i>Distribution :</i>	Waltek Testing Group Co.,Ltd

<i>Issue</i>	<i>Date</i>	<i>Modifications</i>
A	8/30/2020	Initial release

Page: 2/11

*This document shall not be reproduced, except in full or in part, without the written approval of MVG.
The information contained herein is to be used only for the purpose for which it is submitted and is not to be released in whole or part without written approval of MVG.*