

Configuration and installation guide



Dear reader,

We recommend that you read and follow this step-by-step guide to configuration and installation of the BEKEY door unit. The guide includes:

1. Product specification
2. Installation preparation
3. Installation on the door*

In order to ensure correct functionality of the product it is very important that the above steps are followed as described in this document.

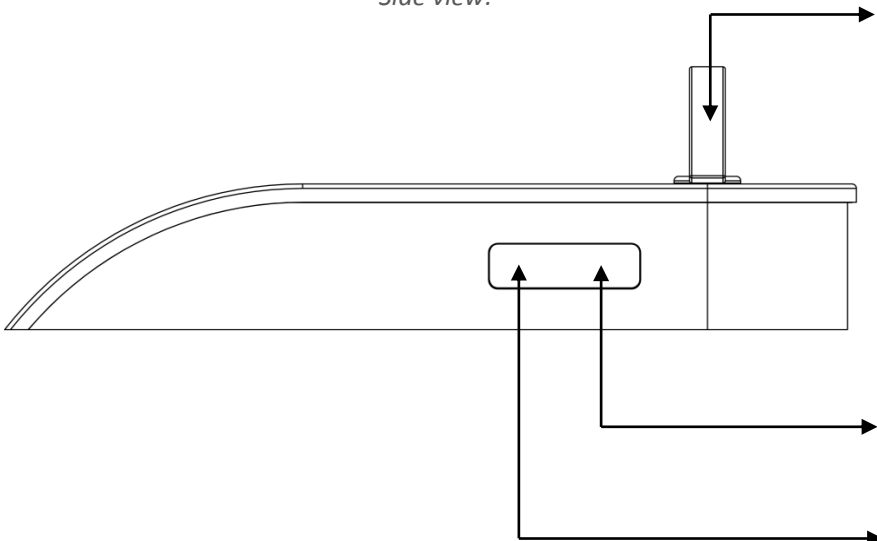
Best regards,

BEKEY

**This installation guide pertains to the lock type "Regular deadbolt". If you have purchased an add-on package with your BEKEY door unit, by step 3, follow the instructions from the package to complete the installation on your lock. Should you have any questions, please contact BEKEY support through our website www.bekey.dk/support.*

1. Product specification

Side view:



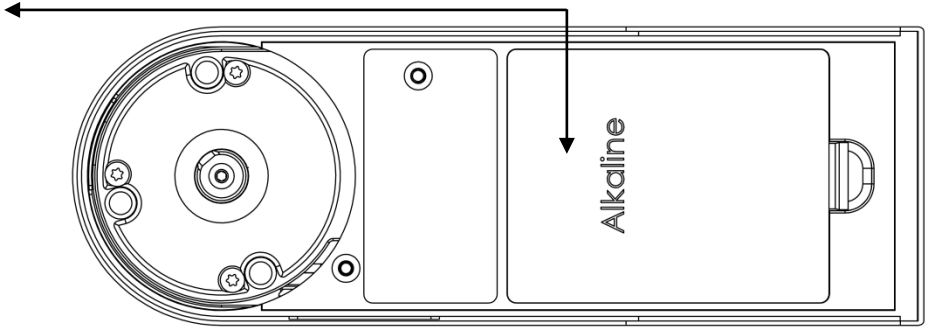
Thumb turn
Enables manual opening.

Lock button
Press to unlock/lock.

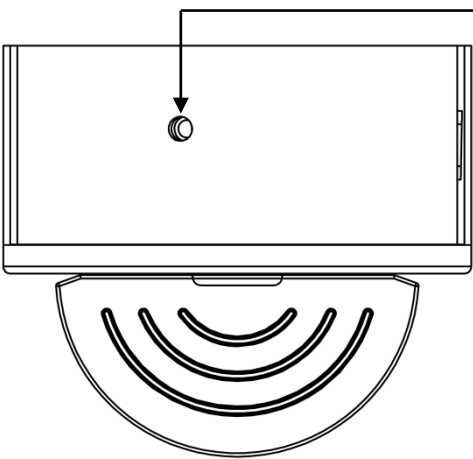
LEDs
BLUE = Lock is active
RED = Batteries need replacement

Rear view:

Battery cover
for 4 x 1.5 V AA
Batteries



Bottom view:



Hex screw hole
Fastens the door unit to the installation plate.

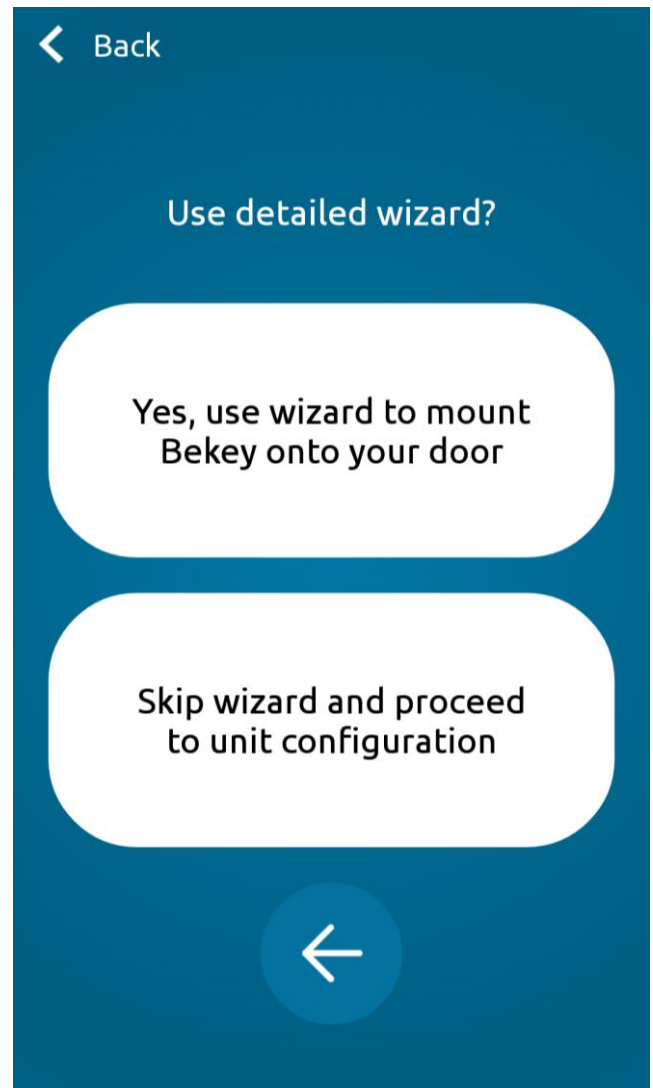
2. Before mounting the Door Unit

In order to install the Bekey Door Unit, you need to download and install the “Bekey” app, which can be downloaded from the Play Store on Android-devices and App Store on iOS-devices. Open the app, choose “Install a Bekey” in the “Private”-tab, and follow the instructions in the app to either create a new user or log in as existing user.

After having created a new user or logged in, the app will ask you to scan the QR-code of the device that you want to install. The QR-code can be found on the back of the device and scanned by holding the QR-code in front of the camera of the phone. After having scanned the QR-code, press yes to use the installation wizard.



1: QR-code placement



2: Press yes to use the installation wizard

In order to install the unit on the door, follow the guide in the app. Selected steps from the guide are also shown in the step-by-step installation here.

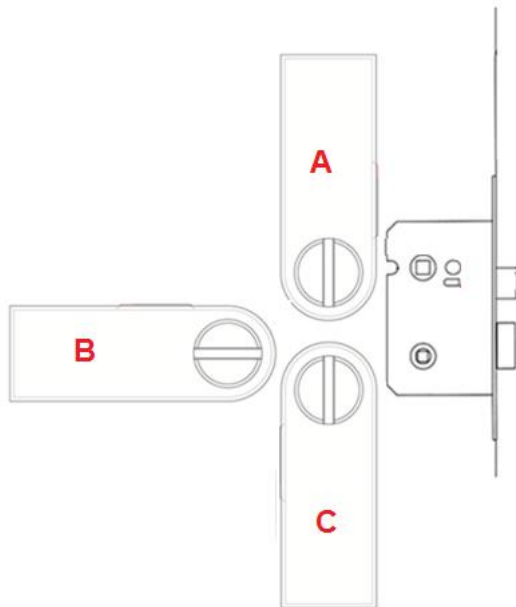
3. Installation on the door

Remember – in case you have purchased an add-on package with your BEKEY door unit, you must follow the installation guide enclosed in the package.

Placement of the door unit

Check that the size of the door unit does not affect the functionality of the door or the existing lock.

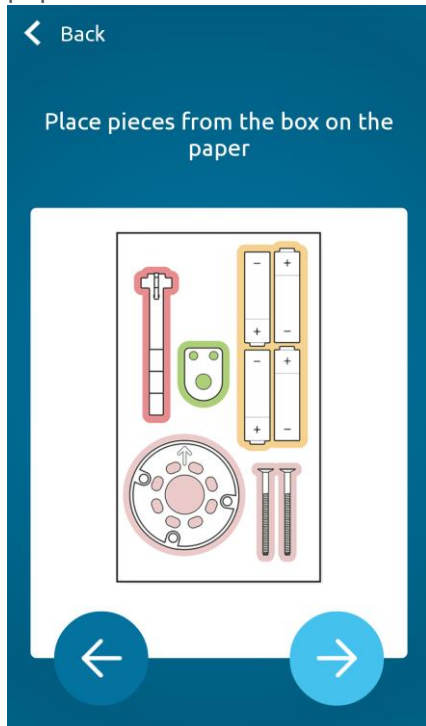
The door unit can be installed in three different ways, as shown below, depending on the position of the door handle:



Step-by-step installation

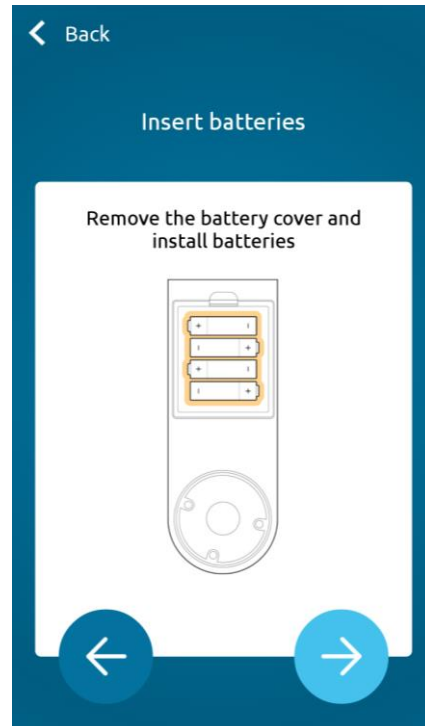
Step 1

Place the pieces from the box on a piece of paper.



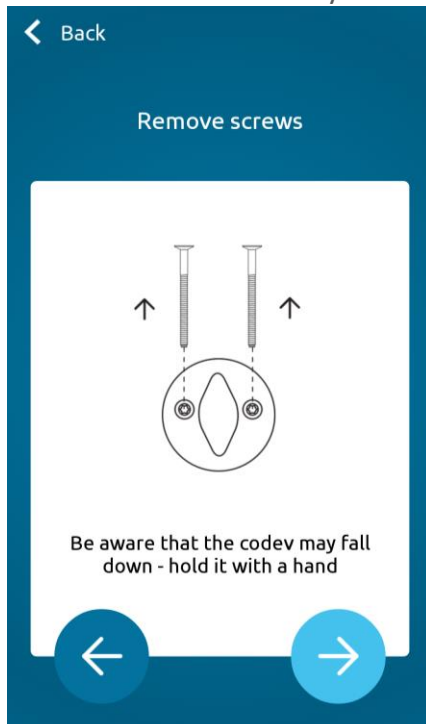
Step 2

Insert the batteries in the unit.



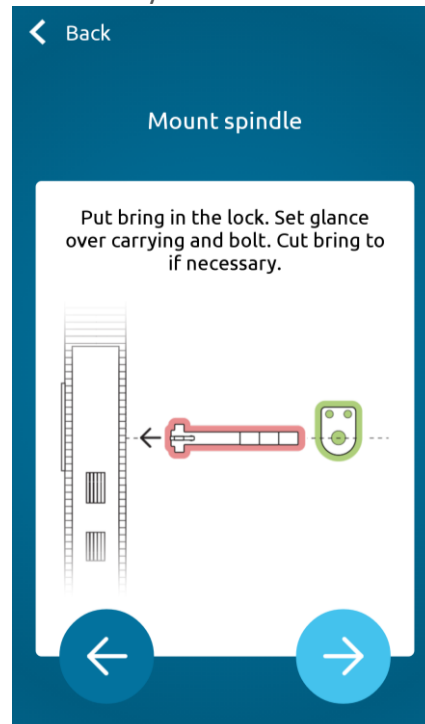
Step 3

Remove the screws using a screwdriver. Be aware that the cover may fall down.



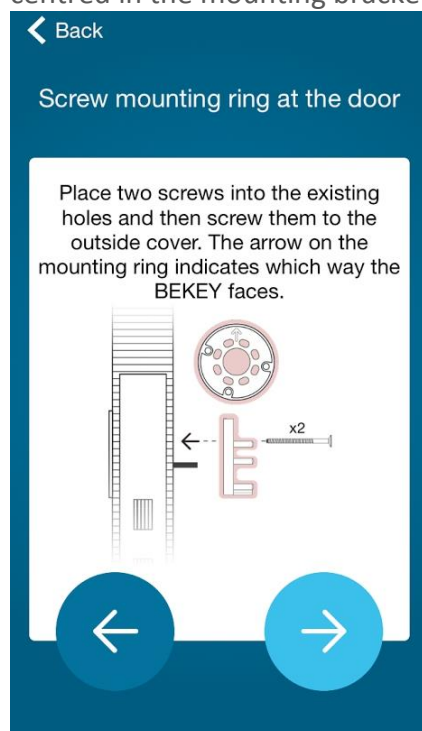
Step 4

Mount the flat driver bar if your door does not already have one.



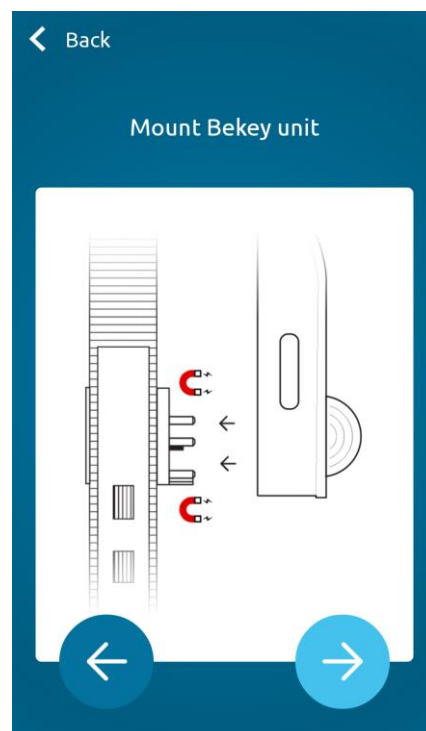
Step 5

Mount the mounting bracket. Before fastening the screws, make sure that the flat driver bar is centred in the mounting bracket.



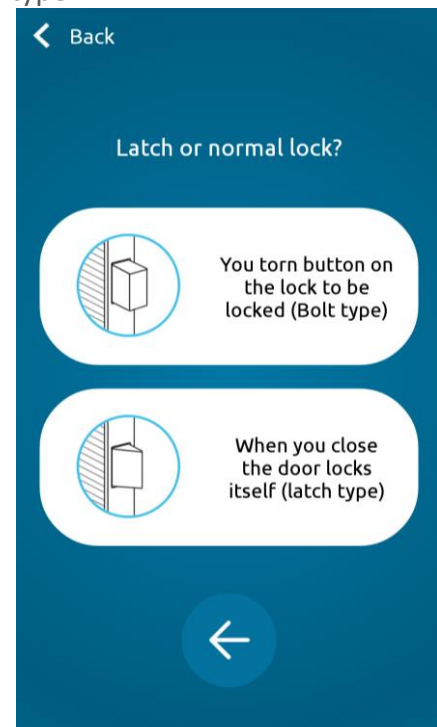
Step 6

Insert the tailpiece and mount the Bekey Door Unit.



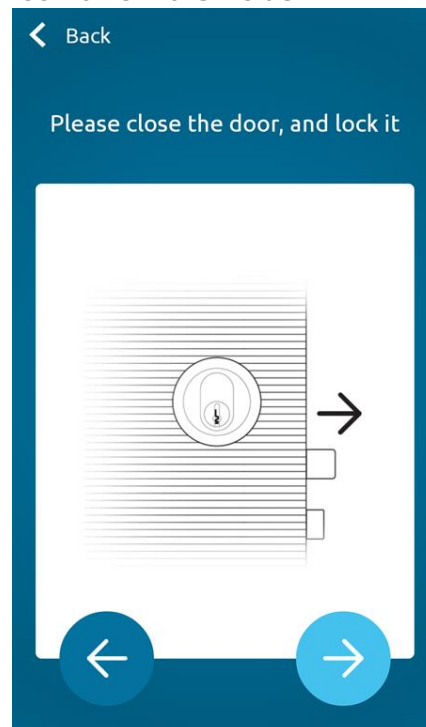
Step 7

Choose whether your lock is a bolt or latch lock type.



Step 8

Close the door and, if it is a bolt lock, lock it from the inside.



Step 9

Open the door with the Bekey App.



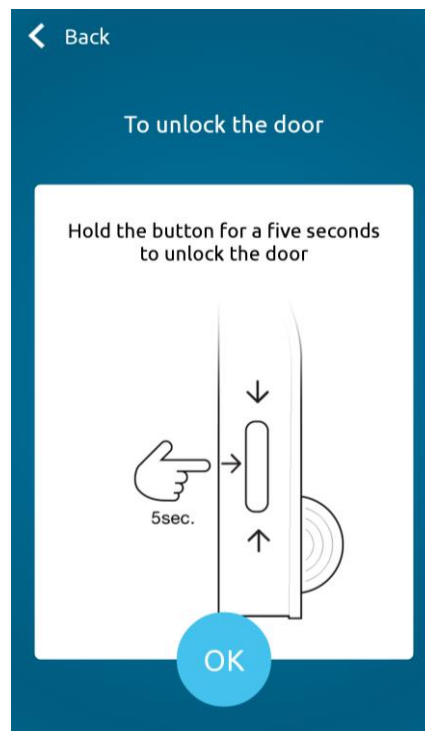
Step 10

If the door opened, press yes. If not, press no to change the direction.



Step 11

Your Bekey Door Unit is now installed. To lock the door, press the button on the side of the unit. To unlock the door, press and hold the button for five seconds.



If one or more errors occur during the installation, please contact BEKEY for support.

4. Product Marking

FCC:

This equipment has been tested and found to comply with the limits for a Class B digital device, pursuant to part 15 of the FCC Rules. These limits are designed to provide reasonable protection against harmful interference in a residential installation. This equipment generates, uses and can radiate radio frequency energy and, if not installed and used in accordance with the instructions, may cause harmful interference to radio communications. However, there is no guarantee that interference will not occur in a particular installation. If this equipment does cause harmful interference to radio or television reception, which can be determined by turning the equipment off and on, the user is encouraged to try to correct the interference by one or more of the following measures:

- Reorient or relocate the receiving antenna.
- Increase the separation between the equipment and receiver.
- Connect the equipment into an outlet on a circuit different from that to which the receiver is connected.
- Consult the dealer or an experienced radio/TV technician for help.

You may also find helpful the following booklet, prepared by the FCC: "How to Identify and Resolve Radio-TV Interference Problems." This booklet is available from the U.S. Government Printing Office, Washington D.C. 20402.

Changes and Modifications not expressly approved by the manufacturer or registrant of this equipment can void your authority to operate this equipment under Federal Communications Commissions rules.

This device complies with Part 15 of the FCC Rules. Operation is subject to the following two conditions:

- (1) this device may not cause harmful interference, and
- (2) this device must accept any interference received, including interference that may cause undesired operation.

No changes shall be made to the equipment without the manufacturer's permission as this may void the user's authority to operate the equipment.

The Bekey as DE2 has been designed and complies with the safety requirements for portable (>0.5cm) RF-exposure in accordance with FCC rule part §2.1093 and KDB 447498 D01.

This equipment complies with FCC radiation exposure limits set forth for an uncontrolled environment. This transmitter must not be co-located or operation in conjunction with any other antenna or transmitter.

Industry Canada:

This device complies with RSS-247 of the Industry Canada Rules. Operation is subject to the following two conditions:

- (1) this device may not cause harmful interference, and
- (2) this device must accept any interference received, including interference that may cause undesired operation.

This equipment complies with IC radiation exposure limits set forth for an uncontrolled environment.

Ce dispositif est conforme à la norme CNR-247 d'Industrie Canada aux appareils radio exempts de license. Son fonctionnement est sujet aux deux conditions suivantes:

- (1) le dispositif ne doit pas produire de brouillage préjudiciable, et
- (2) ce dispositif doit accepter tout brouillage reçu, y compris un brouillage susceptible de provoquer un fonctionnement indésirable.

Cet équipement est conforme aux limites d'exposition aux rayonnements IC établies pour un environnement non contrôlé.



BEKEY Motor Lock ML2-0 declaration of conformity:

This product is compliant with the relevant requirements in Council Directive 99/5/EC on Radio equipment and telecommunications equipment and the mutual recognition of their conformity.

The corresponding declaration of conformity can be found on <http://www.bekey.dk/>.



WEEE-symbol – crossed-out wheeled bin:

The symbol with the crossed-out wheeled bin printed on the product indicates that the product should not be disposed of with household waste, but should be disposed of separately. It is the responsibility of the user to make sure that the electrical and electronic products are handed on to a dedicated collection facility at the end of its lifetime. This requirement is applicable in the European Union.

