

Smart Panoramic Bulb Camera

Fast User Manual

HANGZHOU XIONGMAI TECHNOLOGY CO.,LTD

Precautions

1. Please confirm whether the voltage meets the requirements before using the product, or improper voltage will damage the device and bring security risk.
2. Please install the device correctly and make sure whether to disconnect the power supply at the time of installation.
3. The device will generate heat in the work, please avoid using in confined spaces.
4. In order to prevent burns, do not touch the device after prolonged use.
5. Please use the camera function legally.

Specifications:

Mount: E27

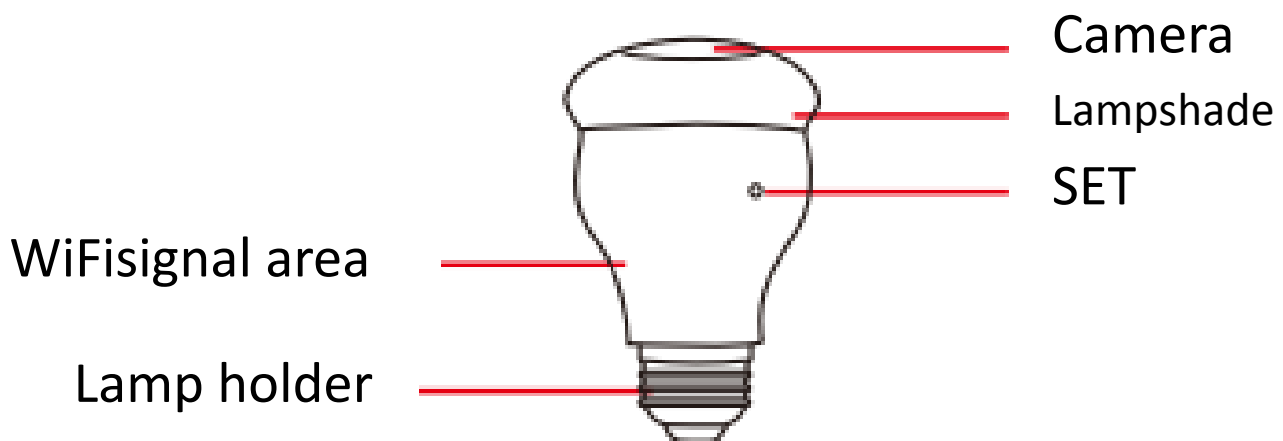
Working Voltage: AC 100 ~ 240V 50~60Hz

Power Consumption: 3W

Life Expectancy: 20,000 hours

Image Sensor: 3.0MegaPixelhigh performance CMOS

Product introduction:



Tips one: Screw the bulb into the lamp and ensure power. Turn on and off the bulb at intervals of 1-3 seconds. After 5 cycles, it will restore into default factory setting.

Tips two: use SET pin to long-press SET button for 6 seconds, the bulb will restore into default factory setting.

Quickmanual

1. APP Download

Tips one: Scan QR code.

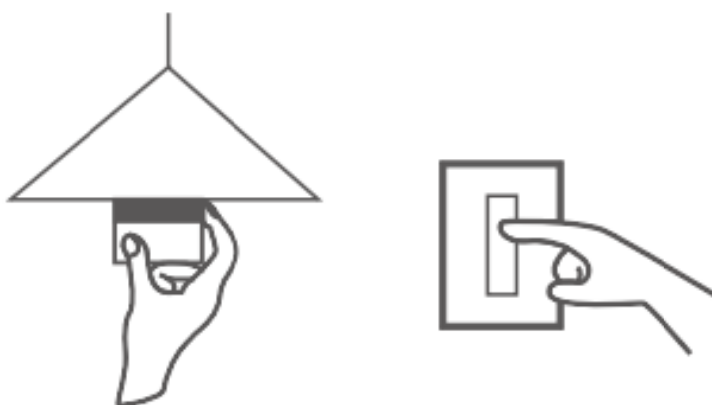


Csee

Tips two: Search "Csee" in AppStore or GooglePlay, and download it.

2. Installation

Screw the bulb into the lamps and turn on the powerswitch.



Attention: After the bulb is powered, the LED white light starts flashing at the interval of 1 second, it enters into

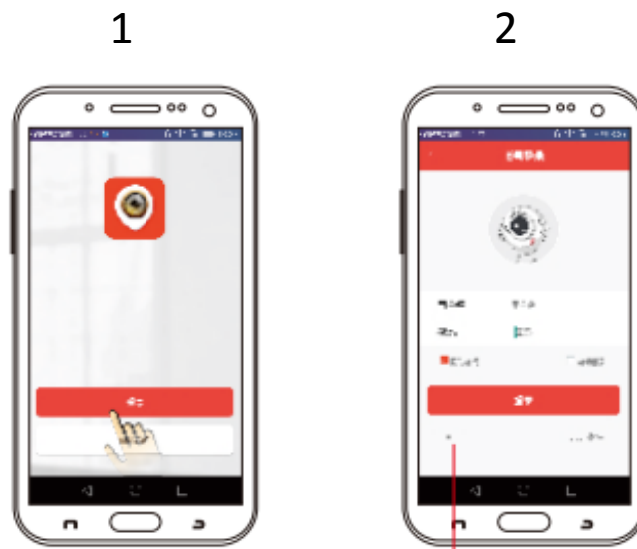
network configuration (LED white light will always flash until finishing network configuration).

Please follow the operation of the “network configuration” on the right:

3. Network Configuration

01. User login

- Open APP “Csee”, select “Temporary login”; (picture 1)
-



02. Add device

After login, Click ⊕ at right-top corner, then click “add my camera”(picture 3) and enter “WiFi password”(picture 4). Complete the device’s network configuration according to the operation tips of APP.

3

4

Fast configuration: For the first time to use and restore the default factory settings.

Add serial numbers: Add other people's bulbs by entering the serial number, sharing information code or scanning the device's QR code.

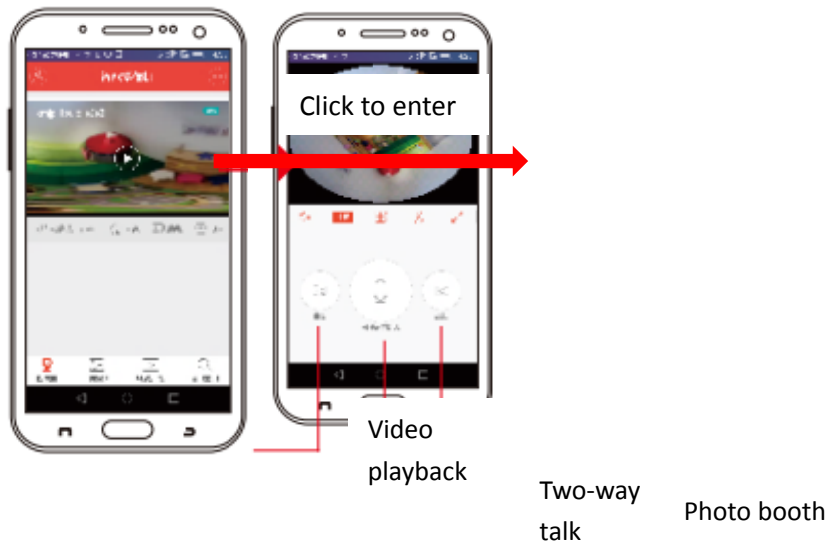


Click “⊕” to check whether the wifi password is correct.

Search local area network: You can use this method to add bulb when the bulb and your phone are connected to the same router.

03. Open video

After the configuration of Smart Panoramic Bulb Camera is done successfully, you can enter into live preview, operate various personalized settings and view related image information.



Attention: If the configuration fails, please restore the product into default factory setting and repeat the above steps until the configuration is done successfully.

Directions (说明)

It will renew timely for APP and device firmware,if upgrades,please operate it online,as it's not informed,and the introduction is just referred.

Warranty Card

Product Name		Model	
Purchase Date		Distributor	
Causation			
Trouble-shooting Situation			
Customer Name		Customer Gender	
Customer Phone		Post Code	
Address			

Warranty period: one year.

This warranty Card is only for our company's products.

FCC Statement

This equipment has been tested and found to comply with the limits for a Class B digital device, pursuant to part 15 of the FCC rules. These limits are designed to provide reasonable protection against harmful interference in a residential installation. This equipment generates, uses and can radiate radio frequency energy and, if not installed and used in accordance with the instructions, may cause harmful interference to radio communications. However, there is no guarantee that interference will not occur in a particular installation. If this equipment does cause harmful interference to radio or television reception, which can be determined by turning the equipment off and on, the user is encouraged to try to correct the interference by one or more of the following measures:

- Reorient or relocate the receiving antenna.
- Increase the separation between the equipment and receiver.
- Connect the equipment into an outlet on a circuit different from that to which the receiver is connected.
- Consult the dealer or an experienced radio/TV technician for help.

To assure continued compliance, any changes or modifications not expressly approved by the party.

Responsible for compliance could void the user's authority to operate this equipment. (Example- use only shielded interface cables when connecting to computer or peripheral devices).

This equipment complies with Part 15 of the FCC Rules. Operation is subject to the following two conditions:

- (1) This device may not cause harmful interference, and
- (2) This device must accept any interference received, including interference that may cause undesired operation.

FCC Radiation Exposure Statement:

The equipment complies with FCC Radiation exposure limits set forth for uncontrolled environment. This equipment should be installed and operated with minimum distance 20cm between the radiator and your body.