
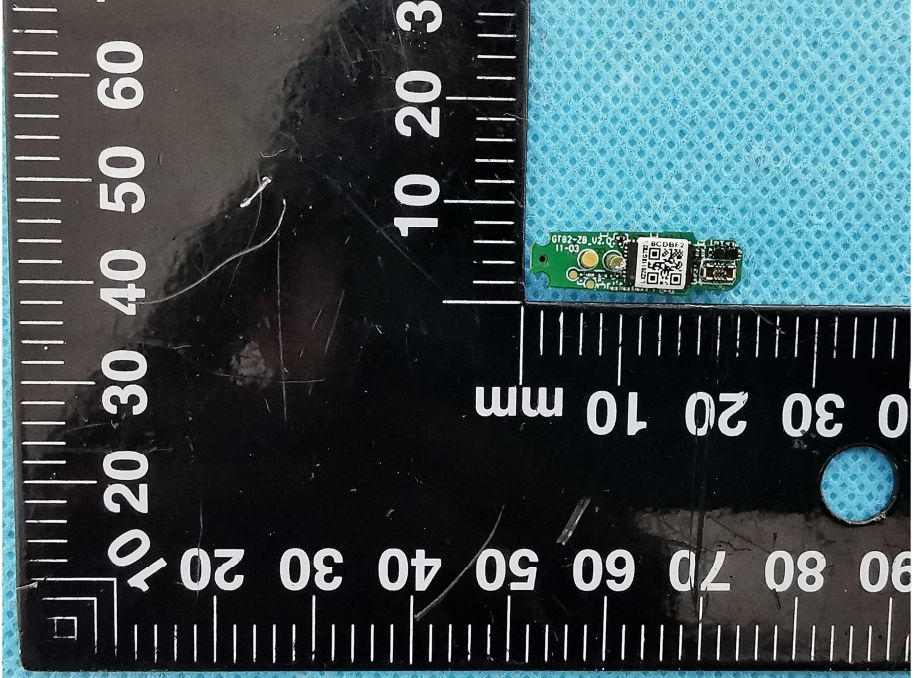
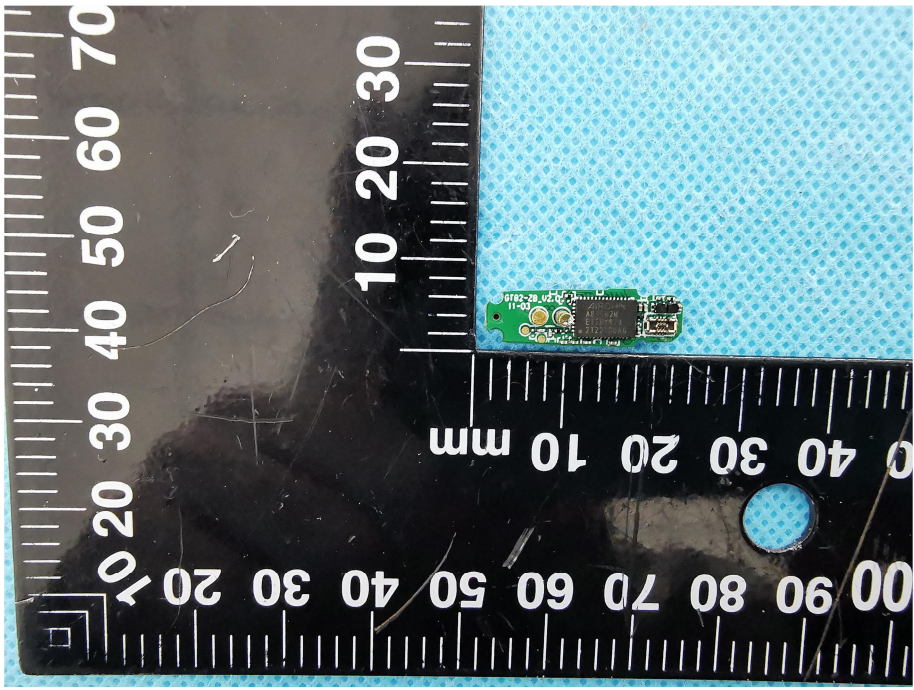
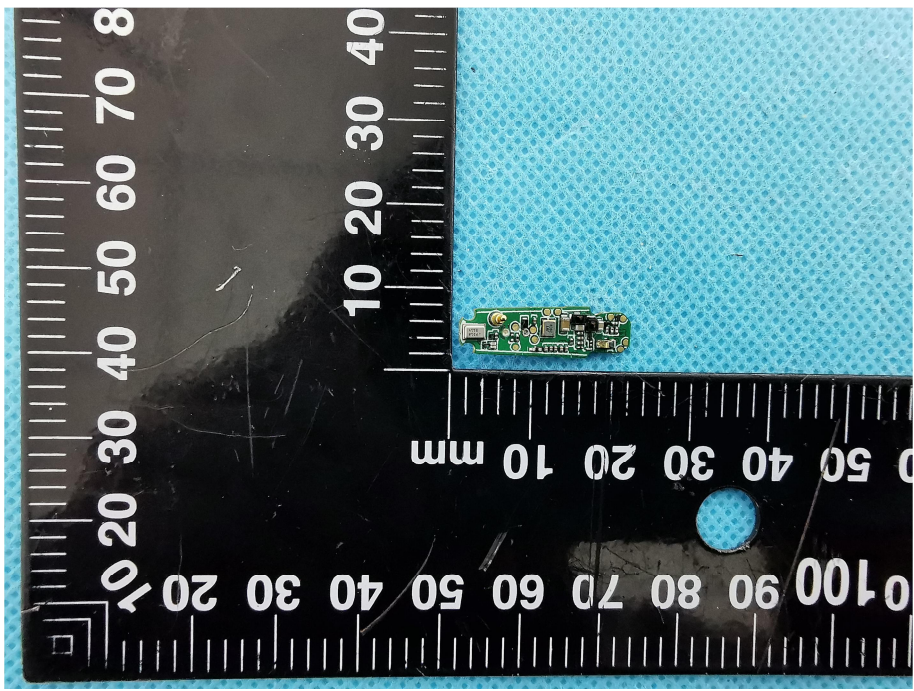
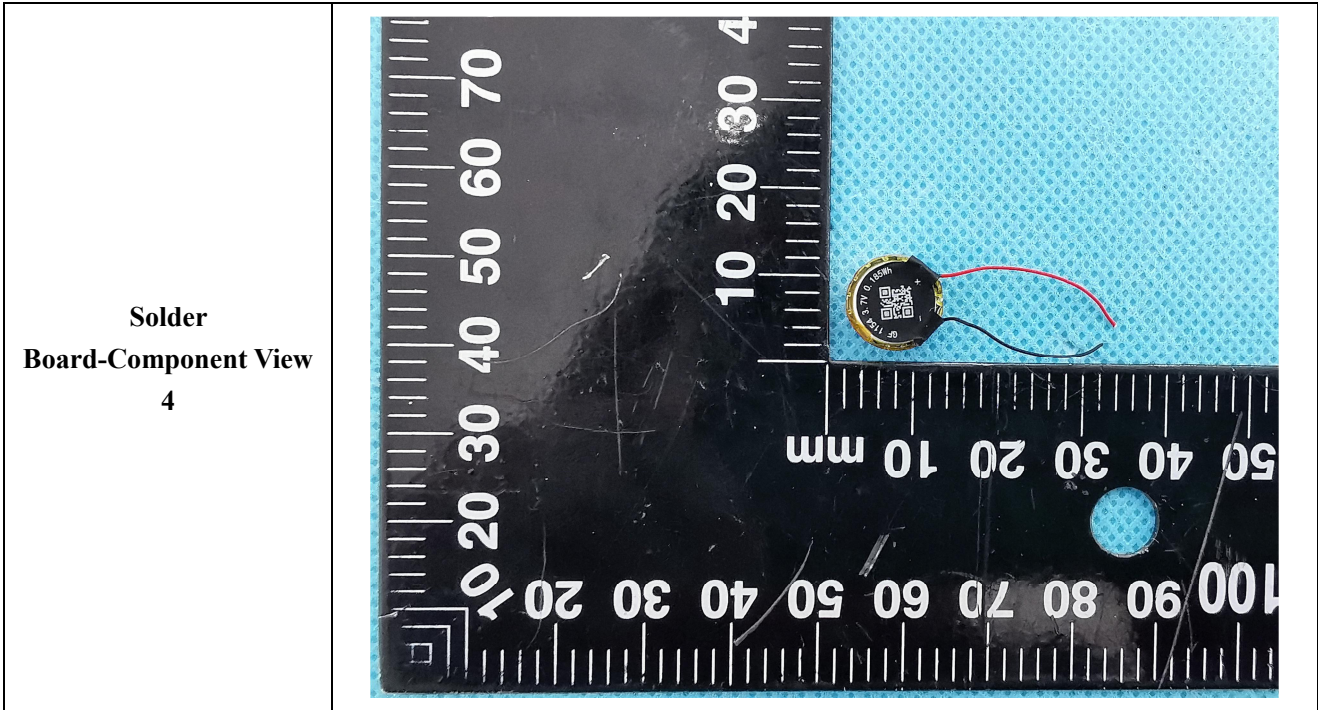


EXHIBIT 3 - EUT INTERNAL PHOTOGRAPHS

Left Earbud

<p>EUT Housing and Board View 1</p>	 <p>This photograph shows the internal components of the left earbud. A black plastic housing is partially disassembled, revealing a green printed circuit board (PCB) with various electronic components. A small black component labeled 'GT02-HP_V1.0' is also visible. A ruler is placed next to the components for scale, showing measurements in millimeters.</p>
<p>Solder Board-Component View 1</p>	 <p>This is a close-up photograph of the green PCB component from the previous view. The board is populated with several surface-mount components, including a QR code and various electronic parts. A ruler is placed below the component for scale, showing measurements in millimeters.</p>

<p style="text-align: center;">Solder Board-Component View 2</p>	 <p>A microscopic view of a solder joint on a board component. The component is a small green PCB with a central chip and several components. It is positioned on a blue textured surface. A black ruler with white markings is visible in the background, showing measurements in millimeters. The ruler has markings for 10, 20, 30, 40, 50, 60, 70, 80, 90, and 100 mm. The component is located approximately between the 10 mm and 30 mm marks on the ruler.</p>
<p style="text-align: center;">Solder Board-Component View 3</p>	 <p>A microscopic view of a solder joint on a board component. The component is a small green PCB with a central chip and several components. It is positioned on a blue textured surface. A black ruler with white markings is visible in the background, showing measurements in millimeters. The ruler has markings for 10, 20, 30, 40, 50, 60, 70, 80, 90, and 100 mm. The component is located approximately between the 10 mm and 30 mm marks on the ruler.</p>



Right Earbud

