


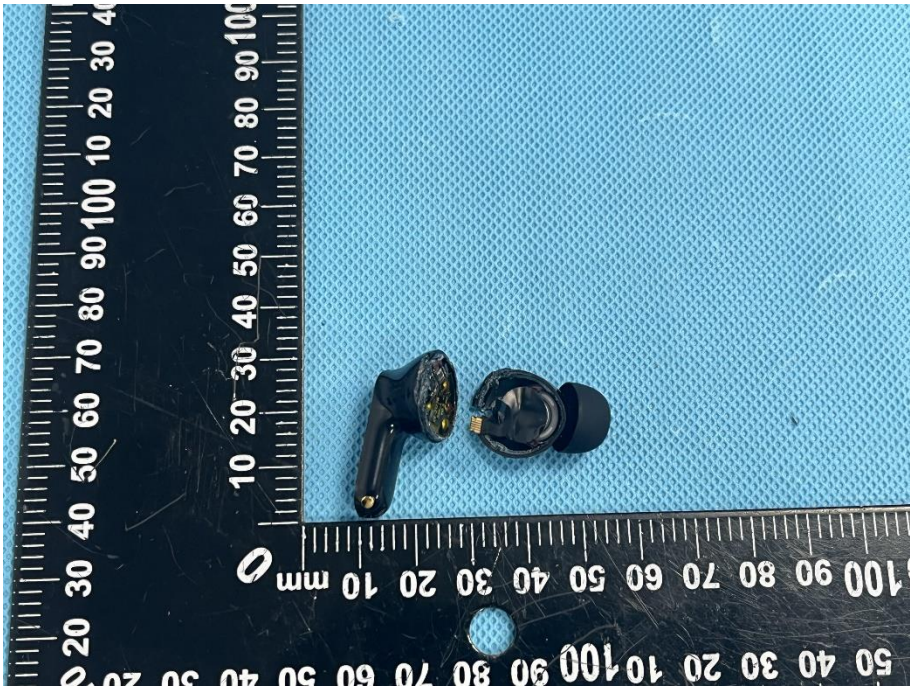
EXHIBIT 3 - EUT INTERNAL PHOTOGRAPHS

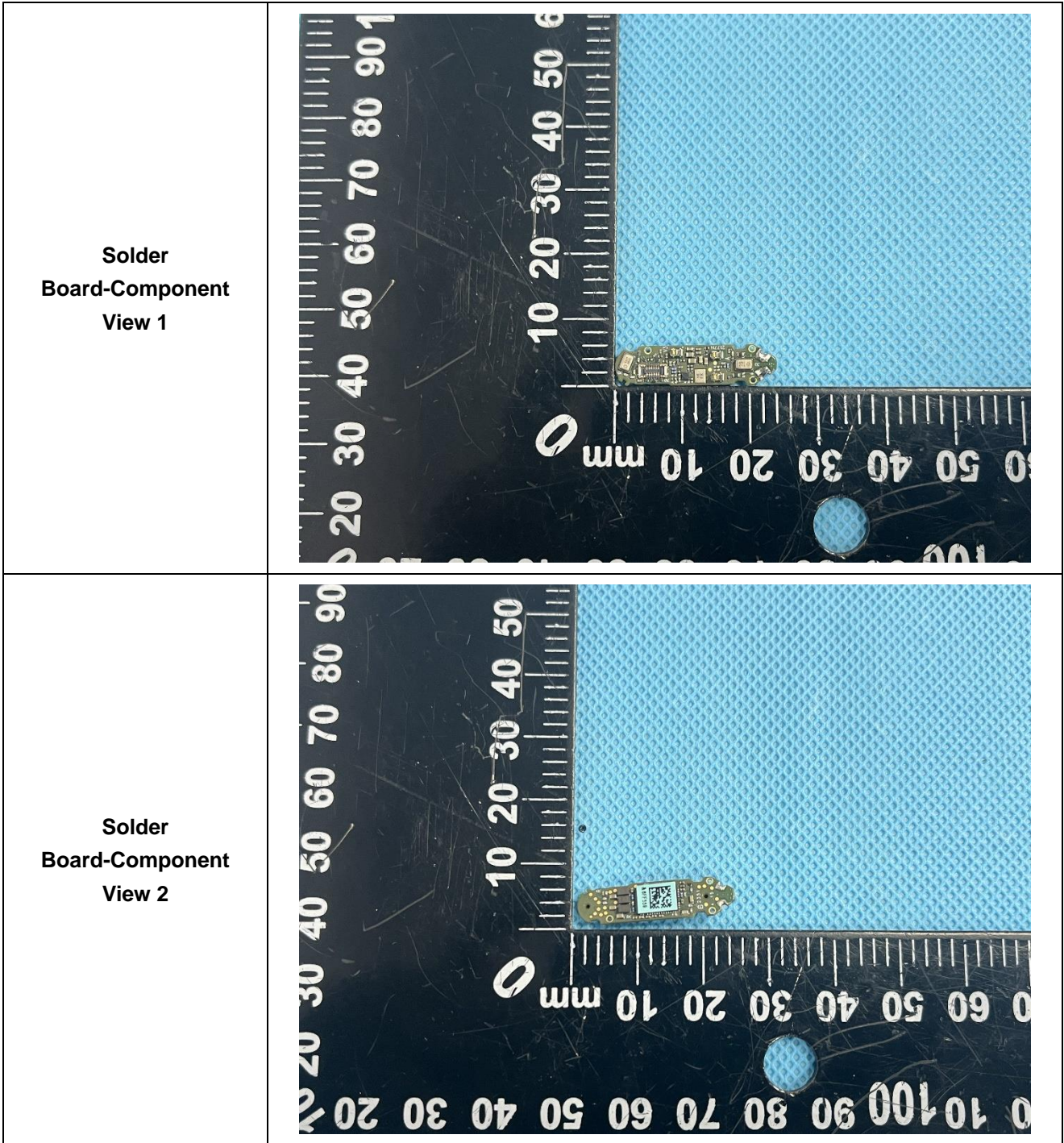
**EUT Housing and
Board View 1**

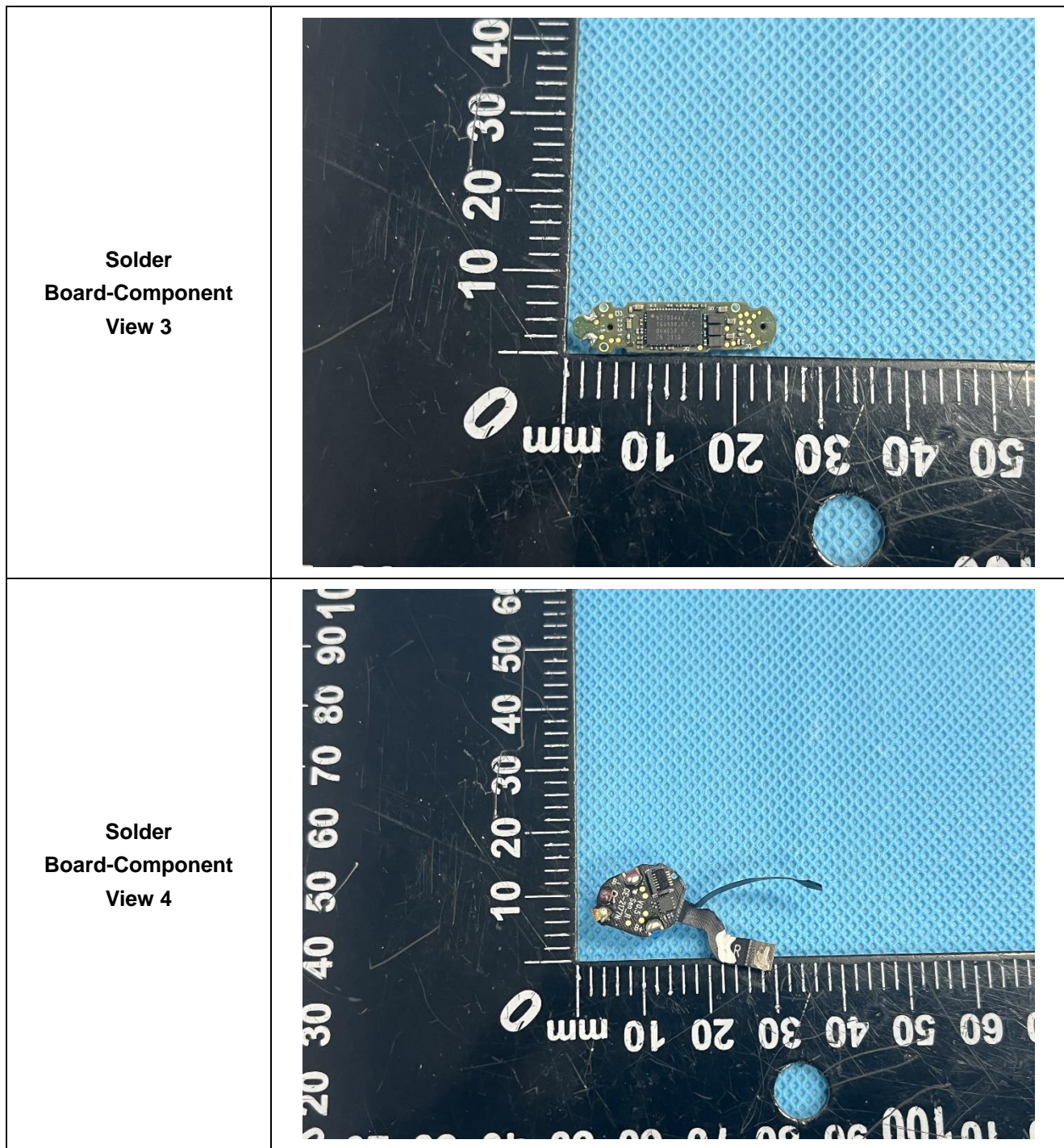


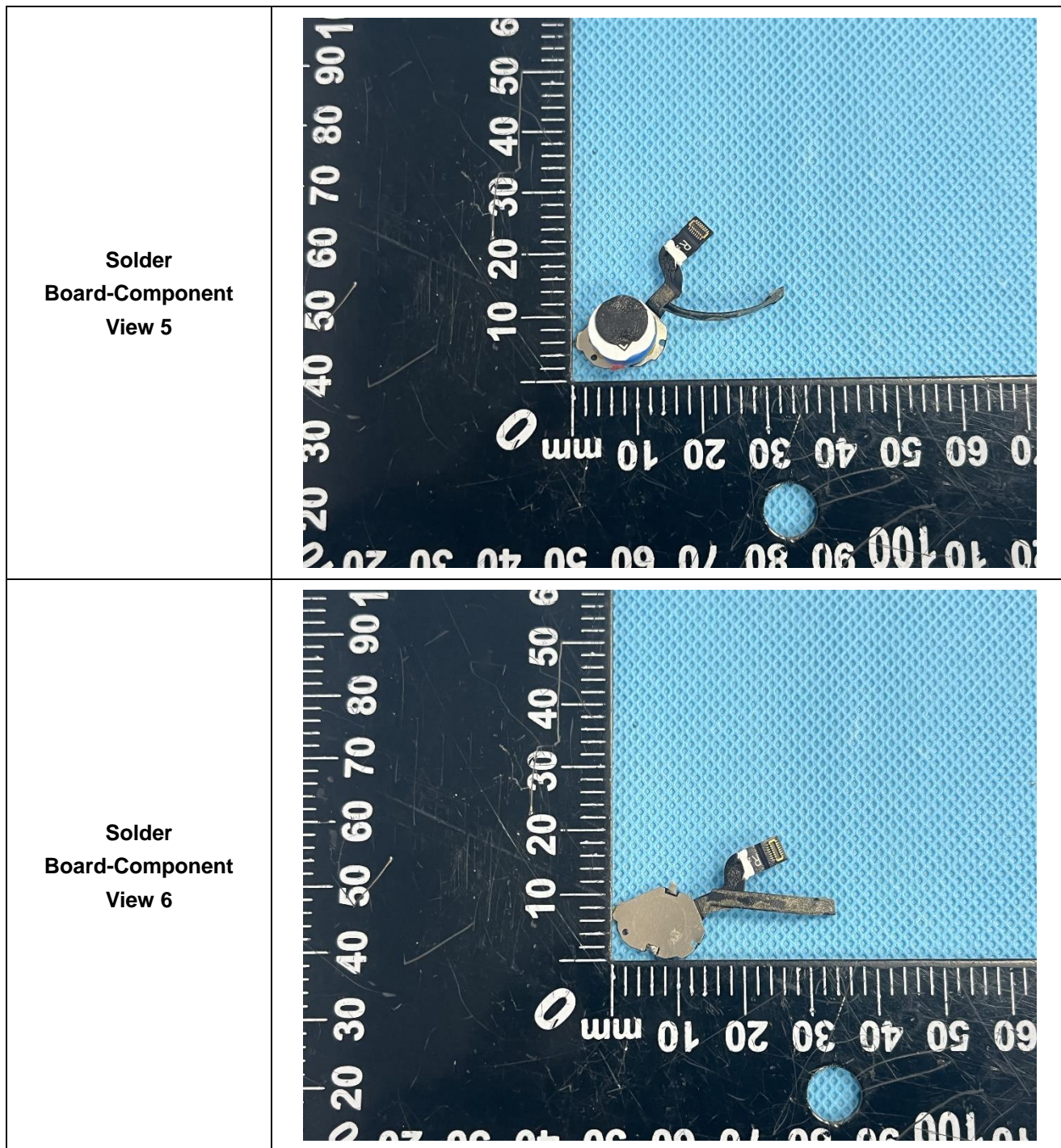
**EUT Housing and
Board View 2**

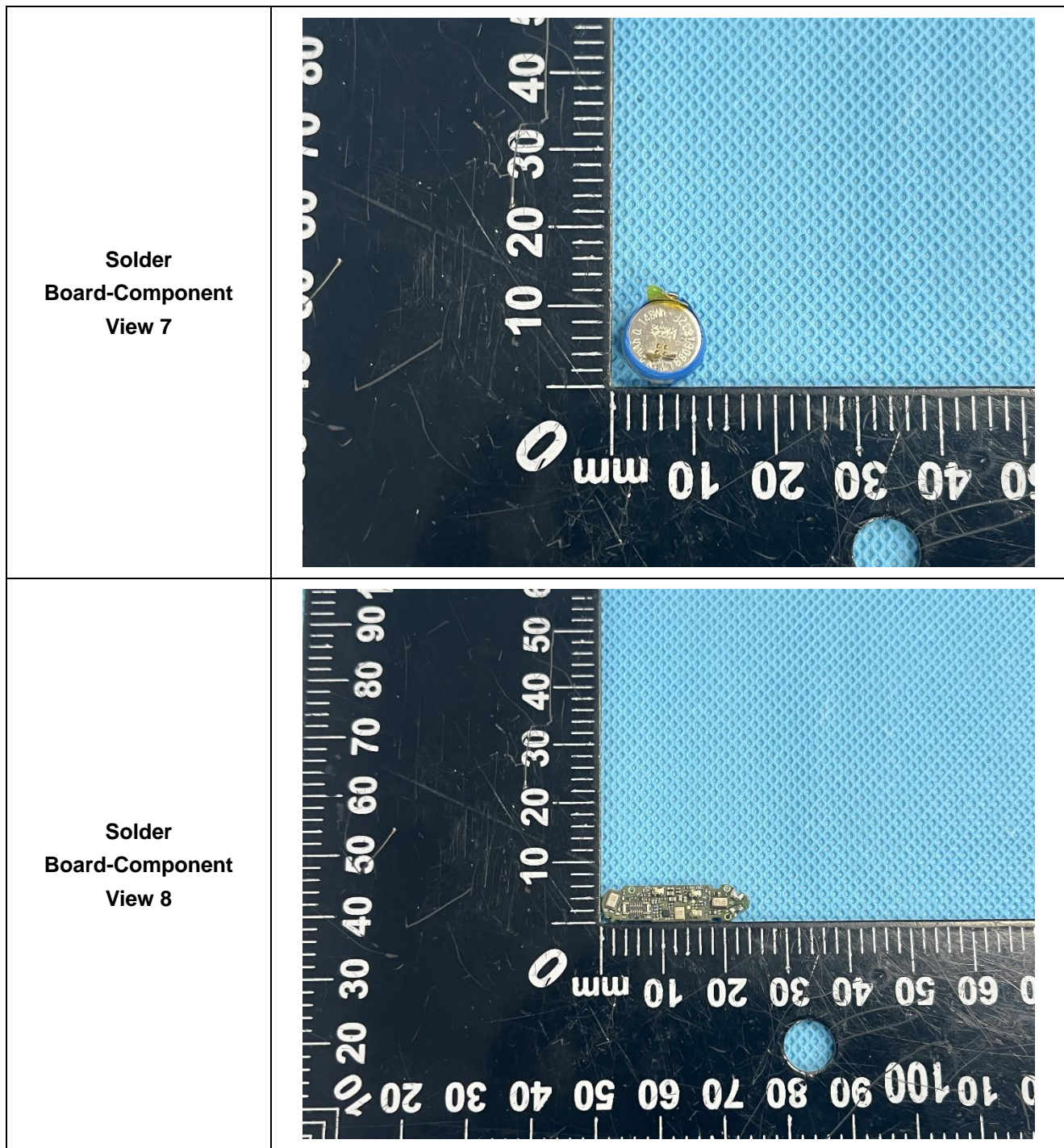


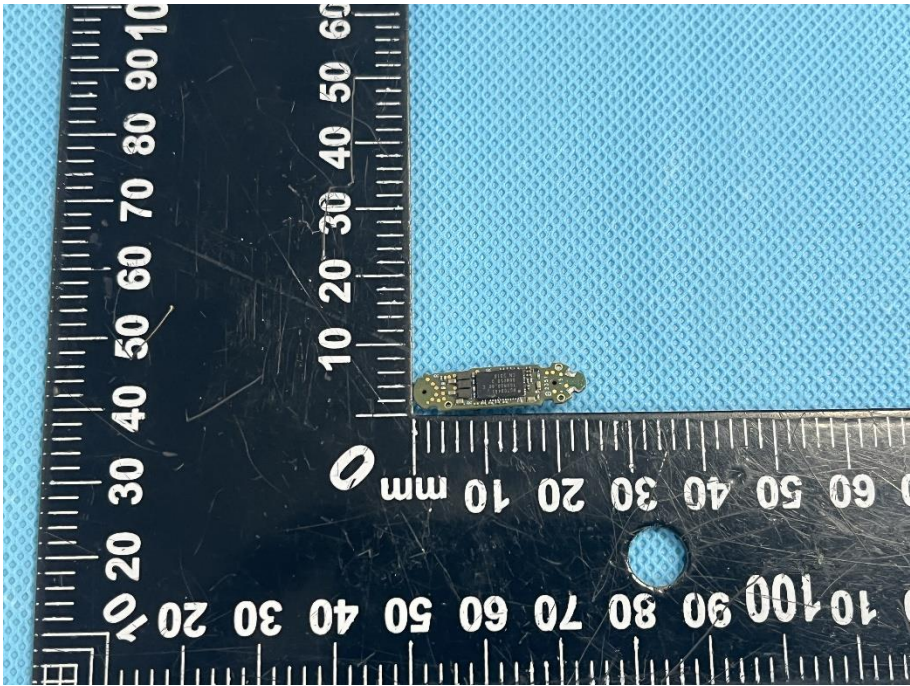
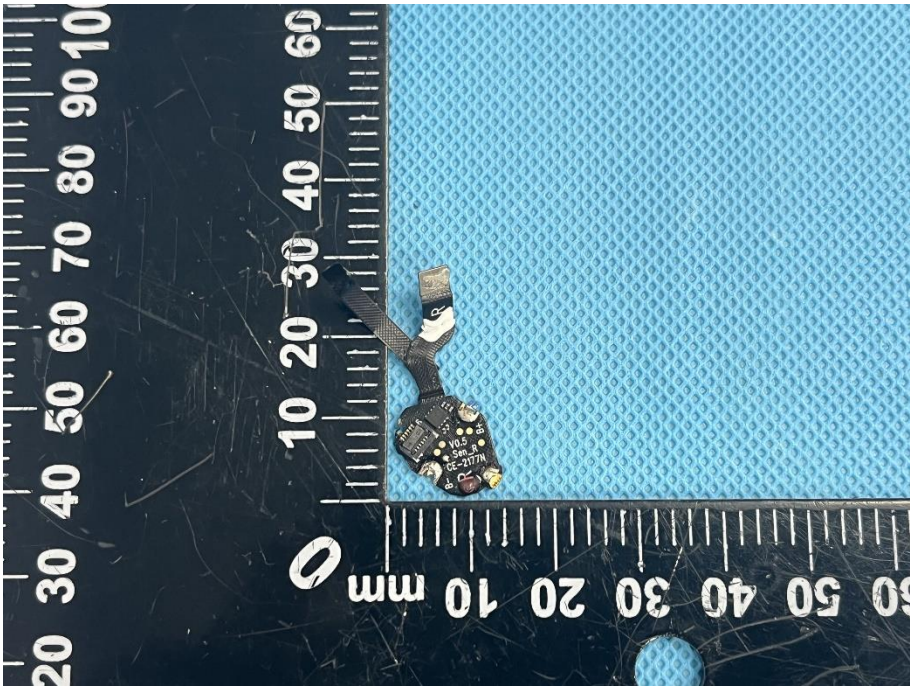
<p>EUT Housing and Board View 3</p>	 A photograph showing two small electronic components, likely earbuds, placed on a blue textured surface next to a black ruler. The ruler has white markings in millimeters and centimeters. The components are positioned between the 10mm and 40mm marks on the ruler. One component is a black earbud, and the other is a small black PCB with gold contacts.
<p>EUT Housing and Board View 4</p>	 A photograph showing two earbuds placed on a blue textured surface next to a black ruler. The ruler has white markings in millimeters and centimeters. The earbuds are positioned between the 10mm and 40mm marks on the ruler. One earbud is shown from the side, and the other is shown from the front, revealing the ear tip and the internal components.









<p>Solder Board-Component View 9</p>	 A photograph of a small, rectangular, gold-colored solder board component. The component is positioned on a blue textured surface. A black ruler with white markings is placed horizontally below the component, showing measurements in millimeters. The component is approximately 10 mm long and 5 mm wide. The ruler markings are visible from 0 to 100 mm.
<p>Solder Board-Component View 10</p>	 A photograph of a small, rectangular, gold-colored solder board component, similar to View 9. This component has a ribbon cable attached to one end. It is positioned on a blue textured surface. A black ruler with white markings is placed horizontally below the component, showing measurements in millimeters. The component is approximately 10 mm long and 5 mm wide. The ruler markings are visible from 0 to 100 mm.

