

**Test Plot 1#: GSM 850\_Head Left Cheek\_Middle****DUT: Mobile Phone; Type: Ranger 5; Serial: 18030800320**

Communication System: Generic GSM; Frequency: 836.6 MHz; Duty Cycle: 1:8  
Medium parameters used:  $f = 836.6$  MHz;  $\sigma = 0.883$  S/m;  $\epsilon_r = 42.117$ ;  $\rho = 1000$  kg/m<sup>3</sup> ;  
Phantom section: Left Section

DASY5 Configuration:

- Probe: EX3DV4 - SN7441; ConvF(9.98, 9.98, 9.98); Calibrated: 2017/11/2;
- Sensor-Surface: 1.4mm (Mechanical Surface Detection)
- Electronics: DAE4 Sn1459; Calibrated: 2017/9/15
- Phantom: SAM (30deg probe tilt) with CRP v5.0\_20150321; Type: QD000P40CD; Serial: TP:1874
- Measurement SW: DASY52, Version 52.8 (8);

**Area Scan (121x61x1):** Interpolated grid: dx=1.500 mm, dy=1.500 mm

Maximum value of SAR (interpolated) = 0.281 W/kg

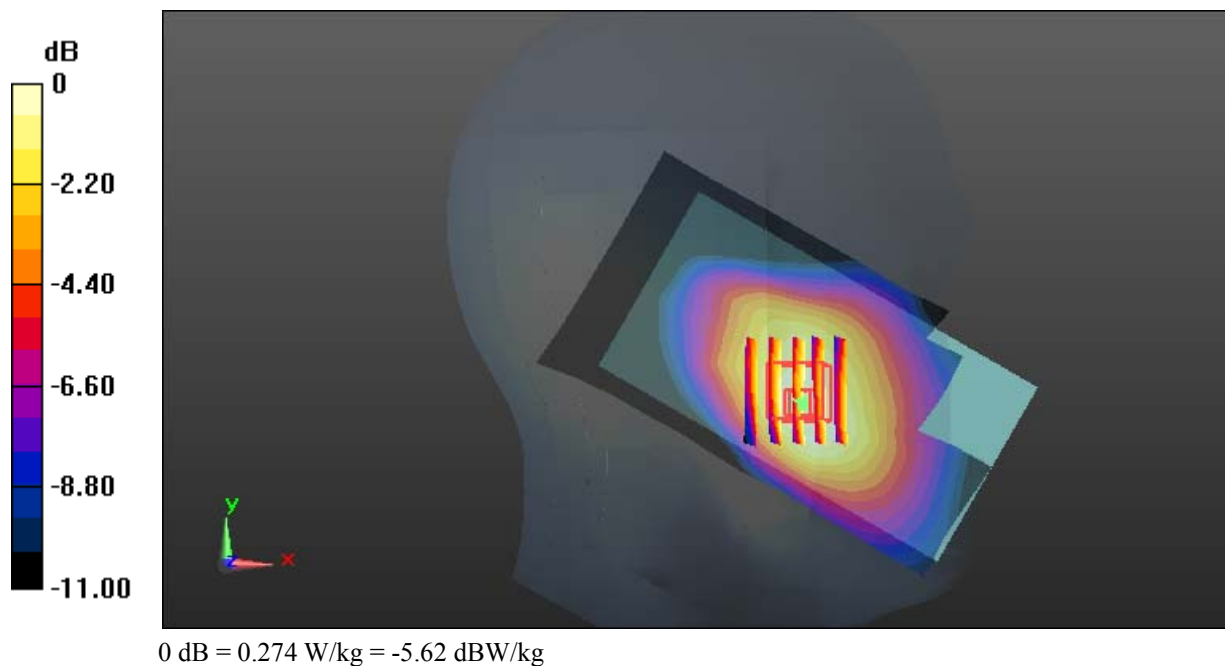
**Zoom Scan (5x6x7)/Cube 0:** Measurement grid: dx=8mm, dy=8mm, dz=5mm

Reference Value = 5.490 V/m; Power Drift = -0.10 dB

Peak SAR (extrapolated) = 0.317 W/kg

**SAR(1 g) = 0.228 W/kg; SAR(10 g) = 0.174 W/kg**

Maximum value of SAR (measured) = 0.274 W/kg



**Test Plot 2#: GSM 850\_Head Left Tilt\_Middle****DUT: Mobile Phone; Type: Ranger 5; Serial: 18030800320**

Communication System: Generic GSM; Frequency: 836.6 MHz; Duty Cycle: 1:8  
Medium parameters used:  $f = 836.6$  MHz;  $\sigma = 0.883$  S/m;  $\epsilon_r = 42.117$ ;  $\rho = 1000$  kg/m<sup>3</sup> ;  
Phantom section: Left Section

DASY5 Configuration:

- Probe: EX3DV4 - SN7441; ConvF(9.98, 9.98, 9.98); Calibrated: 2017/11/2;
- Sensor-Surface: 1.4mm (Mechanical Surface Detection)
- Electronics: DAE4 Sn1459; Calibrated: 2017/9/15
- Phantom: SAM (30deg probe tilt) with CRP v5.0\_20150321; Type: QD000P40CD; Serial: TP:1874
- Measurement SW: DASY52, Version 52.8 (8);

**Area Scan (121x61x1):** Interpolated grid: dx=1.500 mm, dy=1.500 mm

Maximum value of SAR (interpolated) = 0.148 W/kg

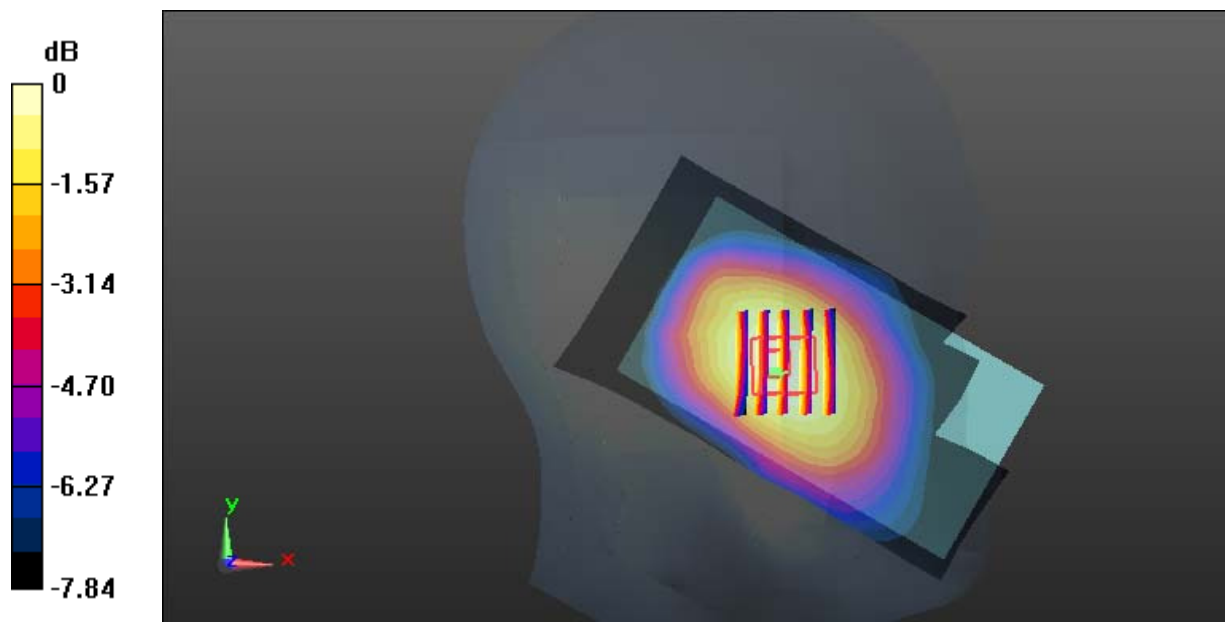
**Zoom Scan (5x6x7)/Cube 0:** Measurement grid: dx=8mm, dy=8mm, dz=5mm

Reference Value = 7.659 V/m; Power Drift = -0.09 dB

Peak SAR (extrapolated) = 0.157 W/kg

**SAR(1 g) = 0.125 W/kg; SAR(10 g) = 0.098 W/kg**

Maximum value of SAR (measured) = 0.145 W/kg



0 dB = 0.145 W/kg = -8.39 dBW/kg

**Test Plot 3#: GSM 850\_Head Right Cheek\_Middle****DUT: Mobile Phone; Type: Ranger 5; Serial: 18030800320**

Communication System: Generic GSM; Frequency: 836.6 MHz; Duty Cycle: 1:8  
Medium parameters used:  $f = 836.6$  MHz;  $\sigma = 0.883$  S/m;  $\epsilon_r = 42.117$ ;  $\rho = 1000$  kg/m<sup>3</sup> ;  
Phantom section: Right Section

DASY5 Configuration:

- Probe: EX3DV4 - SN7441; ConvF(9.98, 9.98, 9.98); Calibrated: 2017/11/2;
- Sensor-Surface: 1.4mm (Mechanical Surface Detection)
- Electronics: DAE4 Sn1459; Calibrated: 2017/9/15
- Phantom: SAM (30deg probe tilt) with CRP v5.0\_20150321; Type: QD000P40CD; Serial: TP:1874
- Measurement SW: DASY52, Version 52.8 (8);

**Area Scan (121x71x1):** Interpolated grid: dx=1.500 mm, dy=1.500 mm

Maximum value of SAR (interpolated) = 0.260 W/kg

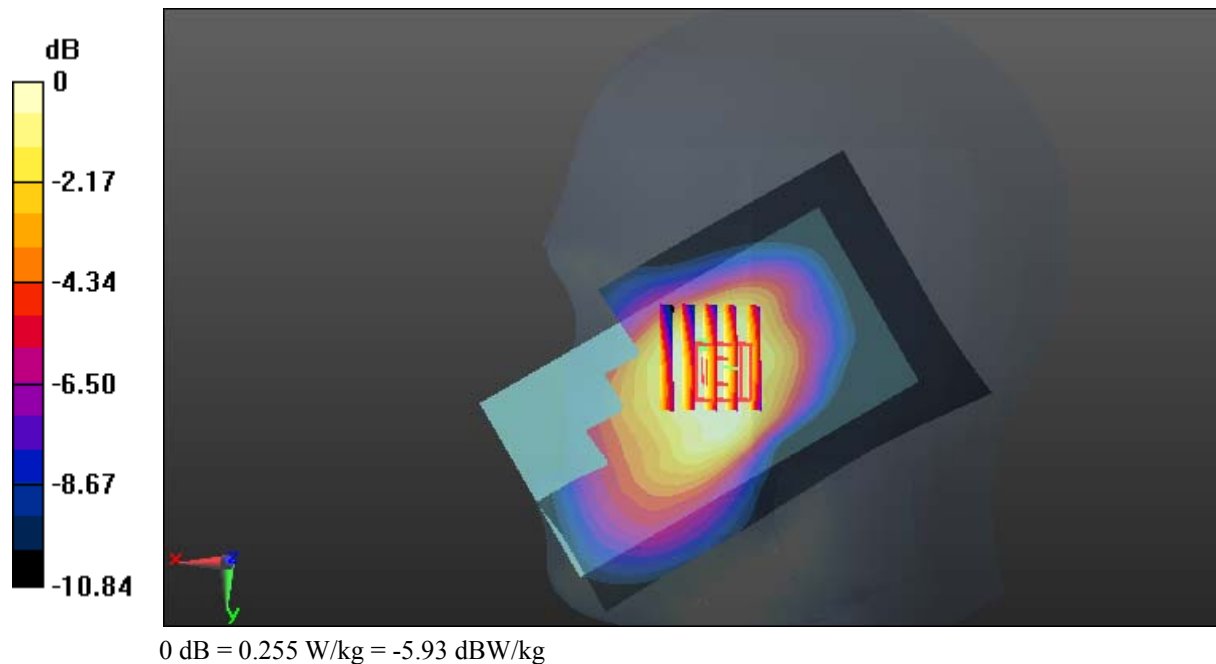
**Zoom Scan (5x6x7)/Cube 0:** Measurement grid: dx=8mm, dy=8mm, dz=5mm

Reference Value = 5.377 V/m; Power Drift = -0.03 dB

Peak SAR (extrapolated) = 0.274 W/kg

**SAR(1 g) = 0.222 W/kg; SAR(10 g) = 0.172 W/kg**

Maximum value of SAR (measured) = 0.255 W/kg



**Test Plot 4#: GSM 850\_Head Right Tilt\_Middle****DUT: Mobile Phone; Type: Ranger 5; Serial: 18030800320**

Communication System: Generic GSM; Frequency: 836.6 MHz; Duty Cycle: 1:8  
Medium parameters used:  $f = 836.6$  MHz;  $\sigma = 0.883$  S/m;  $\epsilon_r = 42.117$ ;  $\rho = 1000$  kg/m<sup>3</sup> ;  
Phantom section: Right Section

DASY5 Configuration:

- Probe: EX3DV4 - SN7441; ConvF(9.98, 9.98, 9.98); Calibrated: 2017/11/2;
- Sensor-Surface: 1.4mm (Mechanical Surface Detection)
- Electronics: DAE4 Sn1459; Calibrated: 2017/9/15
- Phantom: SAM (30deg probe tilt) with CRP v5.0\_20150321; Type: QD000P40CD; Serial: TP:1874
- Measurement SW: DASY52, Version 52.8 (8);

**Area Scan (121x61x1):** Interpolated grid: dx=1.500 mm, dy=1.500 mm

Maximum value of SAR (interpolated) = 0.155 W/kg

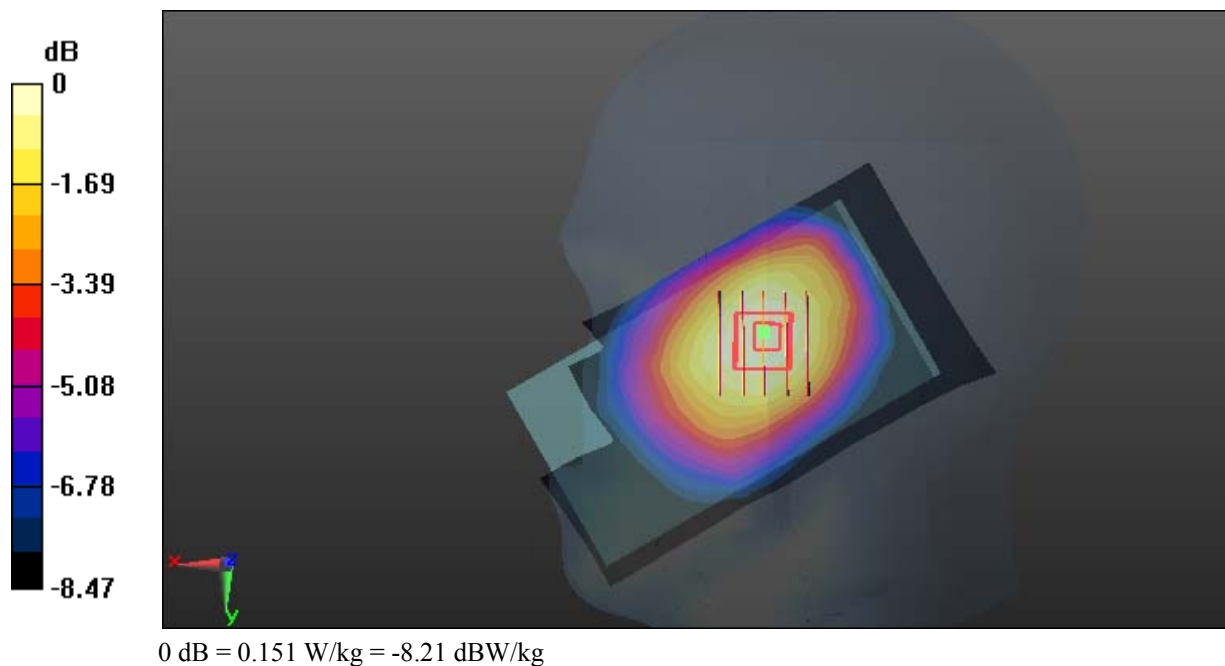
**Zoom Scan (5x6x7)/Cube 0:** Measurement grid: dx=8mm, dy=8mm, dz=5mm

Reference Value = 7.294 V/m; Power Drift = -0.09 dB

Peak SAR (extrapolated) = 0.161 W/kg

**SAR(1 g) = 0.130 W/kg; SAR(10 g) = 0.101 W/kg**

Maximum value of SAR (measured) = 0.151 W/kg



**Test Plot 5#: GSM 850\_Body Worn Back\_Middle****DUT: Mobile Phone; Type: Ranger 5; Serial: 18030800320**

Communication System: Generic GSM; Frequency: 836.6 MHz; Duty Cycle: 1:8  
Medium parameters used:  $f = 836.6$  MHz;  $\sigma = 0.958$  S/m;  $\epsilon_r = 56.879$ ;  $\rho = 1000$  kg/m<sup>3</sup> ;  
Phantom section: Flat Section

DASY5 Configuration:

- Probe: EX3DV4 - SN7441; ConvF(9.95, 9.95, 9.95); Calibrated: 2017/11/2;
- Sensor-Surface: 1.4mm (Mechanical Surface Detection)
- Electronics: DAE4 Sn1459; Calibrated: 2017/9/15
- Phantom: SAM (30deg probe tilt) with CRP v5.0\_20150321; Type: QD000P40CD; Serial: TP:1874
- Measurement SW: DASY52, Version 52.8 (8);

**Area Scan (71x121x1):** Interpolated grid: dx=1.500 mm, dy=1.500 mm

Maximum value of SAR (interpolated) = 0.734 W/kg

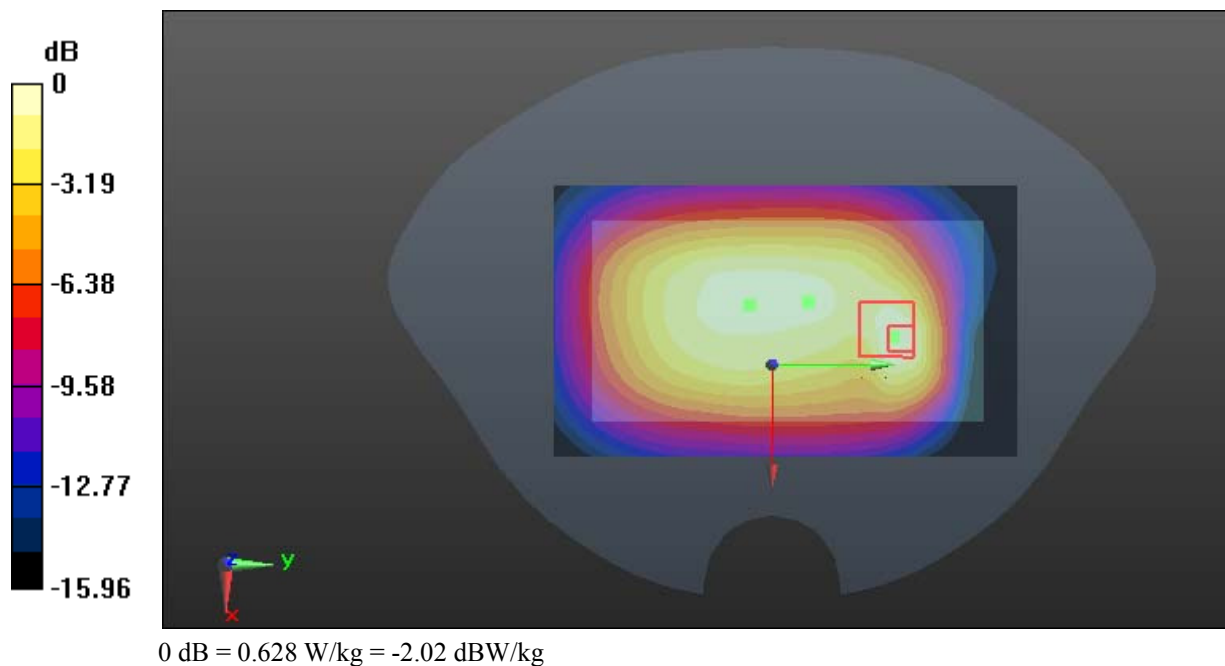
**Zoom Scan (5x6x7)/Cube 0:** Measurement grid: dx=8mm, dy=8mm, dz=5mm

Reference Value = 21.46 V/m; Power Drift = 0.03 dB

Peak SAR (extrapolated) = 0.853 W/kg

**SAR(1 g) = 0.431 W/kg; SAR(10 g) = 0.244 W/kg**

Maximum value of SAR (measured) = 0.628 W/kg



**Test Plot 6#: GSM 850\_Body Back\_Low****DUT: Mobile Phone; Type: Ranger 5; Serial: 18030800320**

Communication System: Generic GPRS-4 slots; Frequency: 824.2 MHz; Duty Cycle: 1:2  
Medium parameters used:  $f = 824.2$  MHz;  $\sigma = 0.947$  S/m;  $\epsilon_r = 57.249$ ;  $\rho = 1000$  kg/m<sup>3</sup> ;  
Phantom section: Flat Section

DASY5 Configuration:

- Probe: EX3DV4 - SN7441; ConvF(9.95, 9.95, 9.95); Calibrated: 2017/11/2;
- Sensor-Surface: 1.4mm (Mechanical Surface Detection)
- Electronics: DAE4 Sn1459; Calibrated: 2017/9/15
- Phantom: SAM (30deg probe tilt) with CRP v5.0\_20150321; Type: QD000P40CD; Serial: TP:1874
- Measurement SW: DASY52, Version 52.8 (8);

**Area Scan (71x121x1):** Interpolated grid: dx=1.500 mm, dy=1.500 mm

Maximum value of SAR (interpolated) = 1.17 W/kg

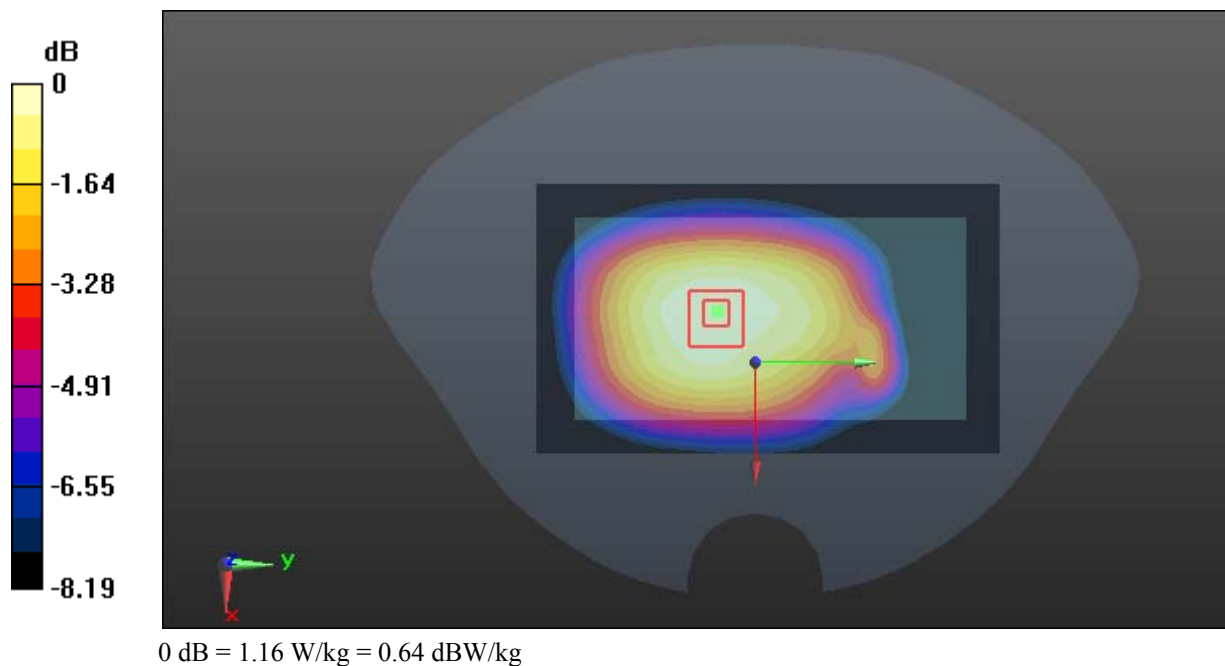
**Zoom Scan (5x6x7)/Cube 0:** Measurement grid: dx=8mm, dy=8mm, dz=5mm

Reference Value = 31.64 V/m; Power Drift = -0.15 dB

Peak SAR (extrapolated) = 1.27 W/kg

**SAR(1 g) = 0.955 W/kg; SAR(10 g) = 0.735 W/kg**

Maximum value of SAR (measured) = 1.16 W/kg



**Test Plot 7#: GSM 850\_Body Back\_Middle****DUT: Mobile Phone; Type: Ranger 5; Serial: 18030800320**

Communication System: Generic GPRS-4 slots; Frequency: 836.6 MHz; Duty Cycle: 1:2  
Medium parameters used:  $f = 836.6$  MHz;  $\sigma = 0.958$  S/m;  $\epsilon_r = 56.879$ ;  $\rho = 1000$  kg/m<sup>3</sup> ;  
Phantom section: Flat Section

DASY5 Configuration:

- Probe: EX3DV4 - SN7441; ConvF(9.95, 9.95, 9.95); Calibrated: 2017/11/2;
- Sensor-Surface: 1.4mm (Mechanical Surface Detection)
- Electronics: DAE4 Sn1459; Calibrated: 2017/9/15
- Phantom: SAM (30deg probe tilt) with CRP v5.0\_20150321; Type: QD000P40CD; Serial: TP:1874
- Measurement SW: DASY52, Version 52.8 (8);

**Area Scan (71x121x1):** Interpolated grid: dx=1.500 mm, dy=1.500 mm

Maximum value of SAR (interpolated) = 1.43 W/kg

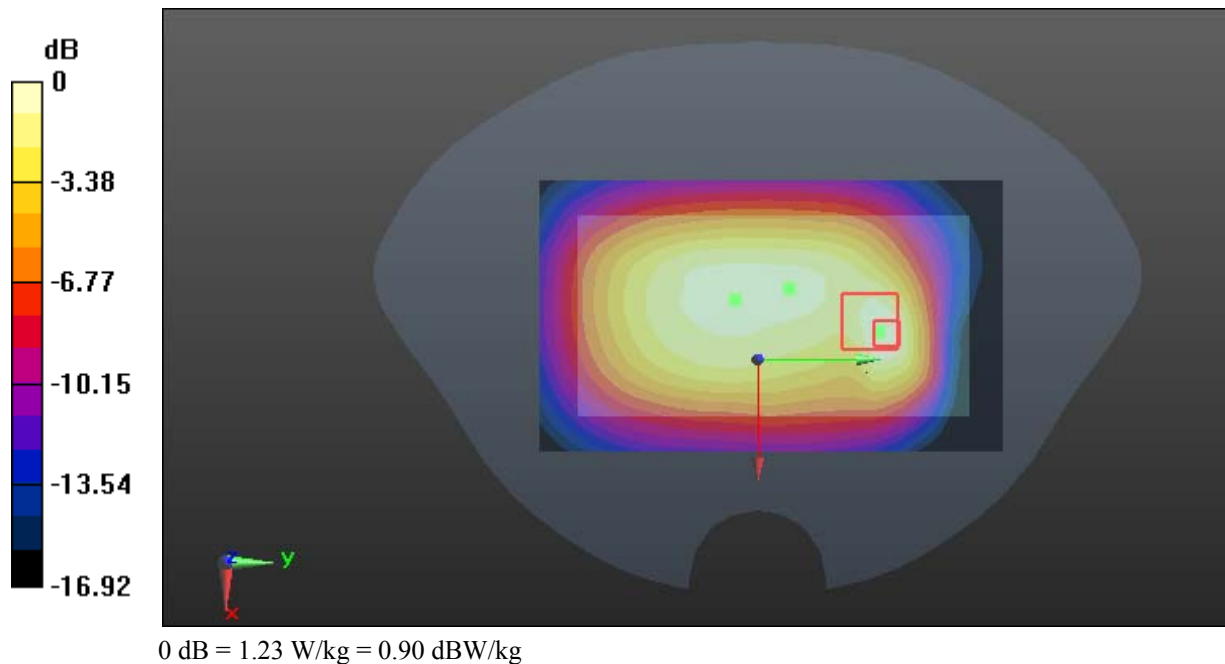
**Zoom Scan (5x6x7)/Cube 0:** Measurement grid: dx=8mm, dy=8mm, dz=5mm

Reference Value = 30.29 V/m; Power Drift = -0.06 dB

Peak SAR (extrapolated) = 1.64 W/kg

**SAR(1 g) = 0.843 W/kg; SAR(10 g) = 0.480 W/kg**

Maximum value of SAR (measured) = 1.23 W/kg



**Test Plot 8#: GSM 850\_Body Back\_High****DUT: Mobile Phone; Type: Ranger 5; Serial: 18030800320**

Communication System: Generic GPRS-4 slots; Frequency: 848.8 MHz; Duty Cycle: 1:2  
Medium parameters used:  $f = 848.8$  MHz;  $\sigma = 0.972$  S/m;  $\epsilon_r = 56.873$ ;  $\rho = 1000$  kg/m<sup>3</sup> ;  
Phantom section: Flat Section

DASY5 Configuration:

- Probe: EX3DV4 - SN7441; ConvF(9.95, 9.95, 9.95); Calibrated: 2017/11/2;
- Sensor-Surface: 1.4mm (Mechanical Surface Detection)
- Electronics: DAE4 Sn1459; Calibrated: 2017/9/15
- Phantom: SAM (30deg probe tilt) with CRP v5.0\_20150321; Type: QD000P40CD; Serial: TP:1874
- Measurement SW: DASY52, Version 52.8 (8);

**Area Scan (71x121x1):** Interpolated grid: dx=1.500 mm, dy=1.500 mm

Maximum value of SAR (interpolated) = 0.904 W/kg

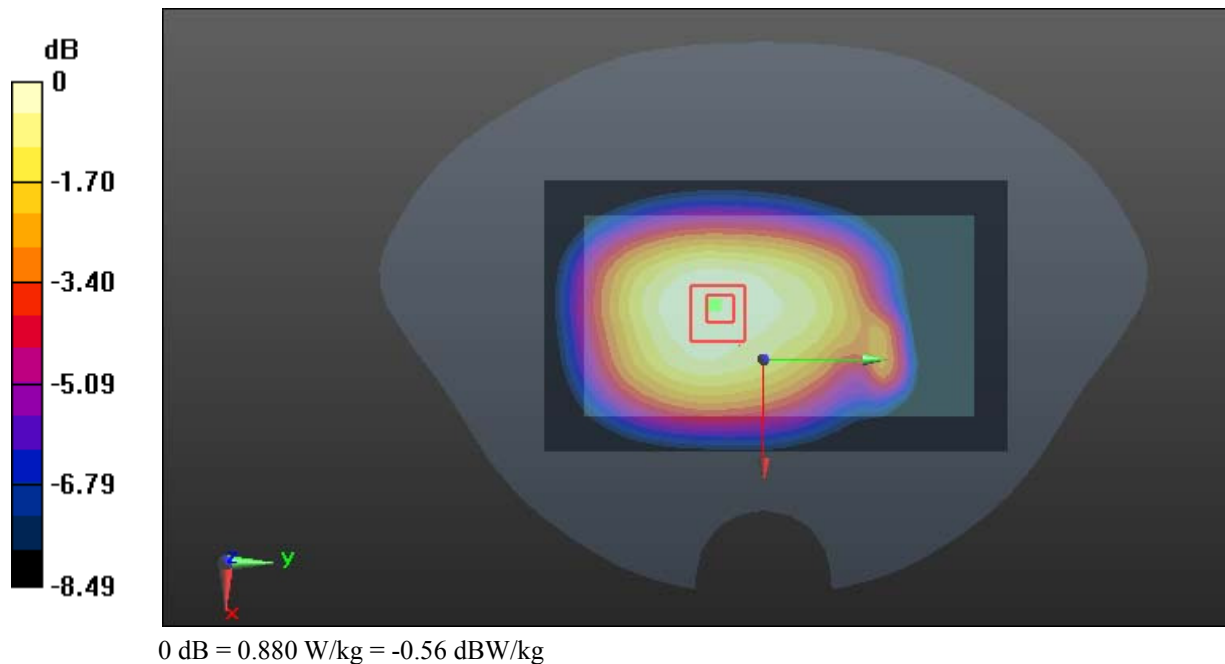
**Zoom Scan (5x6x7)/Cube 0:** Measurement grid: dx=8mm, dy=8mm, dz=5mm

Reference Value = 26.72 V/m; Power Drift = 0.01 dB

Peak SAR (extrapolated) = 0.965 W/kg

**SAR(1 g) = 0.728 W/kg; SAR(10 g) = 0.557 W/kg**

Maximum value of SAR (measured) = 0.880 W/kg





**Test Plot 9#: GSM 850\_Body Right\_Middle****DUT: Mobile Phone; Type: Ranger 5; Serial: 18030800320**

Communication System: Generic GPRS-4 slots; Frequency: 836.6 MHz; Duty Cycle: 1:2  
Medium parameters used:  $f = 836.6$  MHz;  $\sigma = 0.958$  S/m;  $\epsilon_r = 56.879$ ;  $\rho = 1000$  kg/m<sup>3</sup> ;  
Phantom section: Flat Section

DASY5 Configuration:

- Probe: EX3DV4 - SN7441; ConvF(9.95, 9.95, 9.95); Calibrated: 2017/11/2;
- Sensor-Surface: 1.4mm (Mechanical Surface Detection)
- Electronics: DAE4 Sn1459; Calibrated: 2017/9/15
- Phantom: SAM (30deg probe tilt) with CRP v5.0\_20150321; Type: QD000P40CD; Serial: TP:1874
- Measurement SW: DASY52, Version 52.8 (8);

**Area Scan (51x121x1):** Interpolated grid: dx=1.500 mm, dy=1.500 mm

Maximum value of SAR (interpolated) = 0.307 W/kg

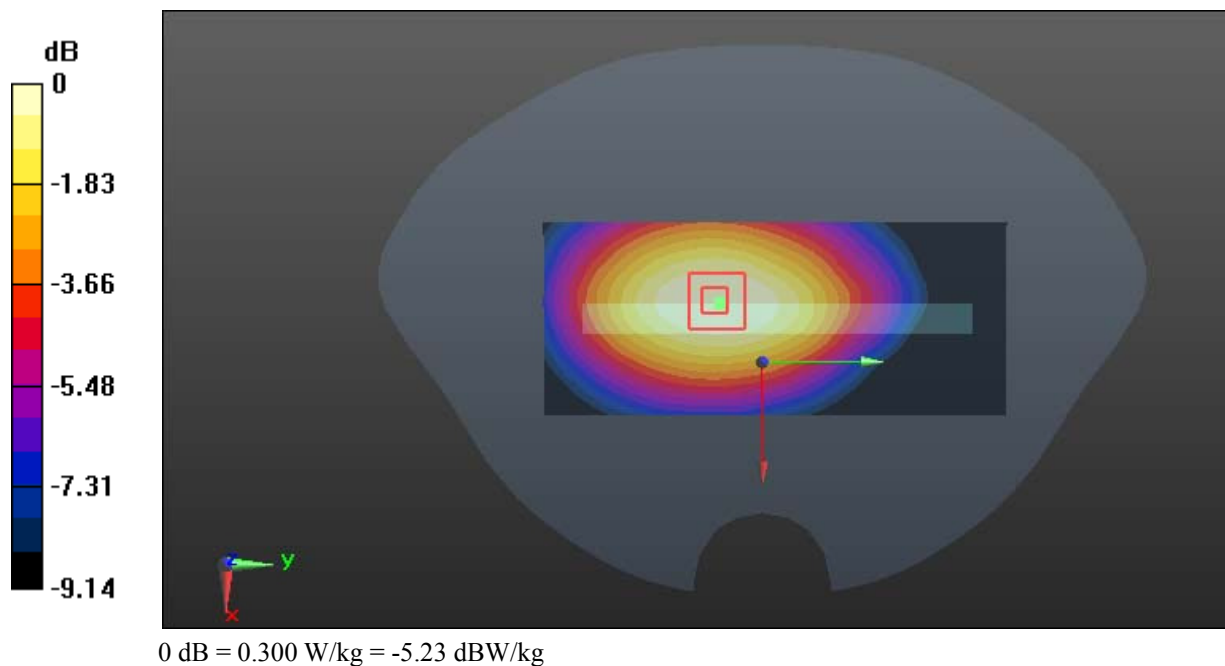
**Zoom Scan (5x6x7)/Cube 0:** Measurement grid: dx=8mm, dy=8mm, dz=5mm

Reference Value = 15.13 V/m; Power Drift = -0.04 dB

Peak SAR (extrapolated) = 0.339 W/kg

**SAR(1 g) = 0.235 W/kg; SAR(10 g) = 0.169 W/kg**

Maximum value of SAR (measured) = 0.300 W/kg



**Test Plot 10#: GSM 850\_Body Bottom\_Middle****DUT: Mobile Phone; Type: Ranger 5; Serial: 18030800320**

Communication System: Generic GPRS-4 slots; Frequency: 836.6 MHz; Duty Cycle: 1:2  
Medium parameters used:  $f = 836.6$  MHz;  $\sigma = 0.958$  S/m;  $\epsilon_r = 56.879$ ;  $\rho = 1000$  kg/m<sup>3</sup> ;  
Phantom section: Flat Section

DASY5 Configuration:

- Probe: EX3DV4 - SN7441; ConvF(9.95, 9.95, 9.95); Calibrated: 2017/11/2;
- Sensor-Surface: 1.4mm (Mechanical Surface Detection)
- Electronics: DAE4 Sn1459; Calibrated: 2017/9/15
- Phantom: SAM (30deg probe tilt) with CRP v5.0\_20150321; Type: QD000P40CD; Serial: TP:1874
- Measurement SW: DASY52, Version 52.8 (8);

**Area Scan (51x81x1):** Interpolated grid: dx=1.500 mm, dy=1.500 mm

Maximum value of SAR (interpolated) = 0.116 W/kg

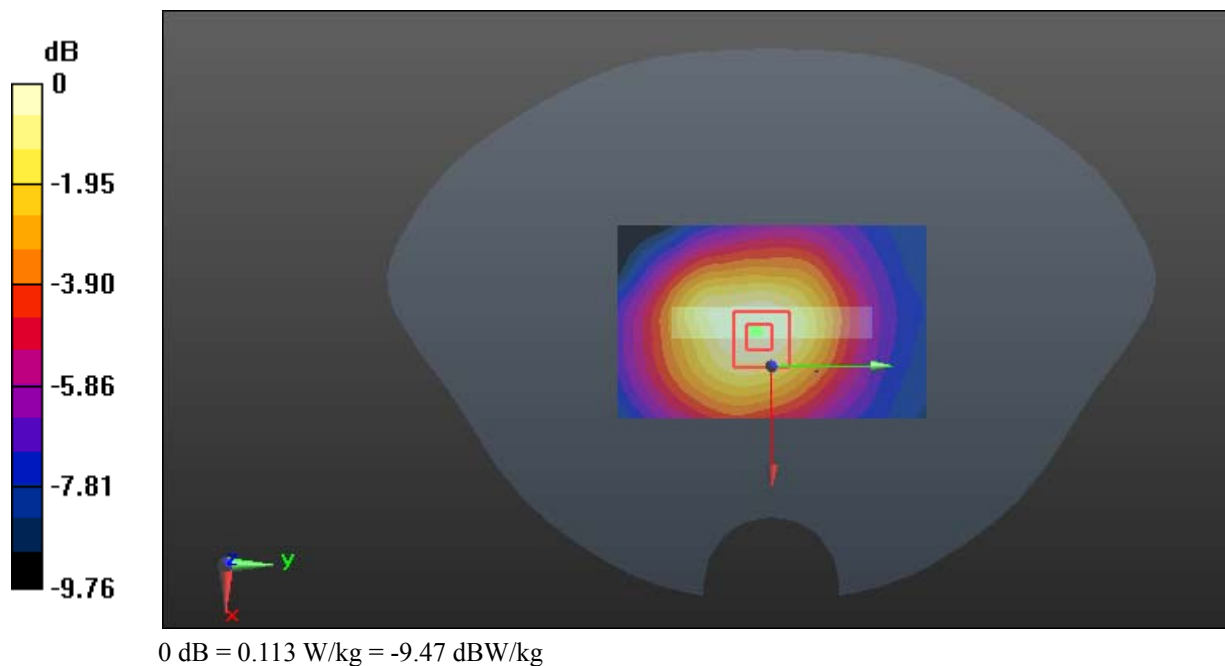
**Zoom Scan (5x6x7)/Cube 0:** Measurement grid: dx=8mm, dy=8mm, dz=5mm

Reference Value = 9.667 V/m; Power Drift = -0.05 dB

Peak SAR (extrapolated) = 0.131 W/kg

**SAR(1 g) = 0.089 W/kg; SAR(10 g) = 0.062 W/kg**

Maximum value of SAR (measured) = 0.113 W/kg



**Test Plot 11#: GSM 1900\_Head Left Cheek\_Middle**

**DUT: Mobile Phone; Type: Ranger 5; Serial: 18030800320**

Communication System: Generic GSM; Frequency: 1880 MHz; Duty Cycle: 1:8  
 Medium parameters used:  $f = 1880 \text{ MHz}$ ;  $\sigma = 1.367 \text{ S/m}$ ;  $\epsilon_r = 40.415$ ;  $\rho = 1000 \text{ kg/m}^3$  ;  
 Phantom section: Left Section

DASY5 Configuration:

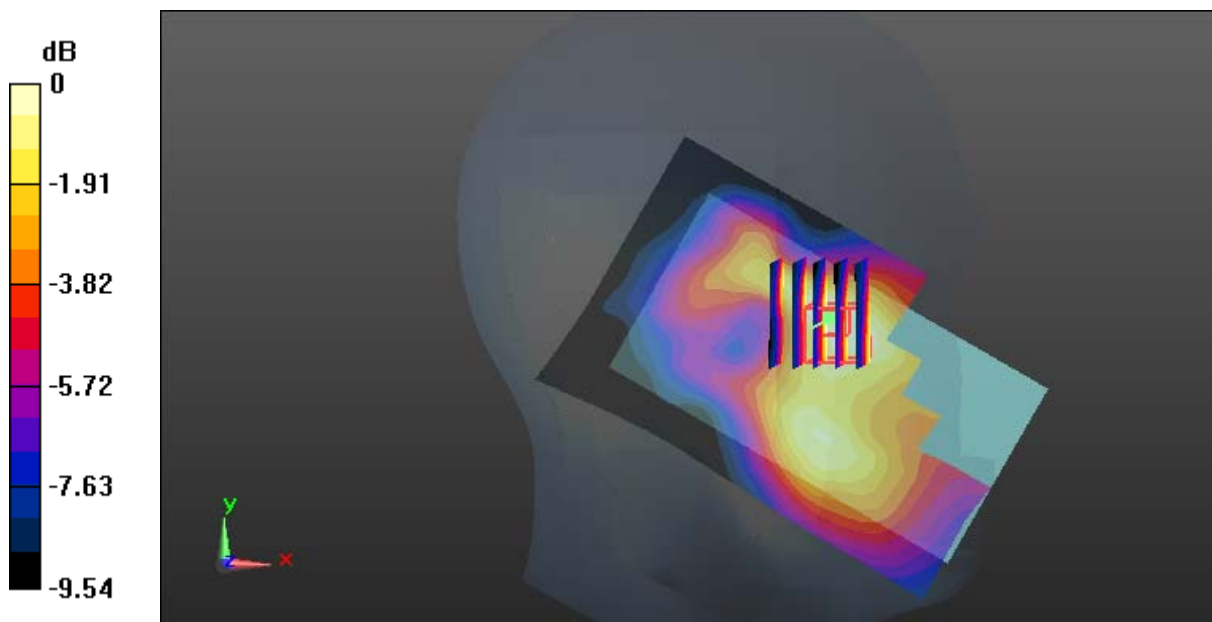
- Probe: EX3DV4 - SN7441; ConvF(7.9, 7.9, 7.9); Calibrated: 2017/11/2;
- Sensor-Surface: 1.4mm (Mechanical Surface Detection)
- Electronics: DAE4 Sn1459; Calibrated: 2017/9/15
- Phantom: SAM (30deg probe tilt) with CRP v5.0\_20150321; Type: QD000P40CD; Serial: TP:1874
- Measurement SW: DASY52, Version 52.8 (8);

**Area Scan (121x71x1):** Interpolated grid:  $dx=1.500 \text{ mm}$ ,  $dy=1.500 \text{ mm}$   
 Maximum value of SAR (interpolated) =  $0.173 \text{ W/kg}$

**Zoom Scan (5x6x7)/Cube 0:** Measurement grid:  $dx=8\text{mm}$ ,  $dy=8\text{mm}$ ,  $dz=5\text{mm}$   
 Reference Value =  $6.168 \text{ V/m}$ ; Power Drift =  $-0.09 \text{ dB}$   
 Peak SAR (extrapolated) =  $0.196 \text{ W/kg}$

**SAR(1 g) = 0.123 W/kg; SAR(10 g) = 0.081 W/kg**

Maximum value of SAR (measured) =  $0.163 \text{ W/kg}$



0 dB =  $0.163 \text{ W/kg} = -7.88 \text{ dBW/kg}$

**Test Plot 12#: GSM 1900\_Head Left Tilt\_Middle****DUT: Mobile Phone; Type: Ranger 5; Serial: 18030800320**

Communication System: Generic GSM; Frequency: 1880 MHz; Duty Cycle: 1:8  
Medium parameters used:  $f = 1880$  MHz;  $\sigma = 1.367$  S/m;  $\epsilon_r = 40.415$ ;  $\rho = 1000$  kg/m<sup>3</sup> ;  
Phantom section: Left Section

DASY5 Configuration:

- Probe: EX3DV4 - SN7441; ConvF(7.9, 7.9, 7.9); Calibrated: 2017/11/2;
- Sensor-Surface: 1.4mm (Mechanical Surface Detection)
- Electronics: DAE4 Sn1459; Calibrated: 2017/9/15
- Phantom: SAM (30deg probe tilt) with CRP v5.0\_20150321; Type: QD000P40CD; Serial: TP:1874
- Measurement SW: DASY52, Version 52.8 (8);

**Area Scan (121x71x1):** Interpolated grid: dx=1.500 mm, dy=1.500 mm

Maximum value of SAR (interpolated) = 0.152 W/kg

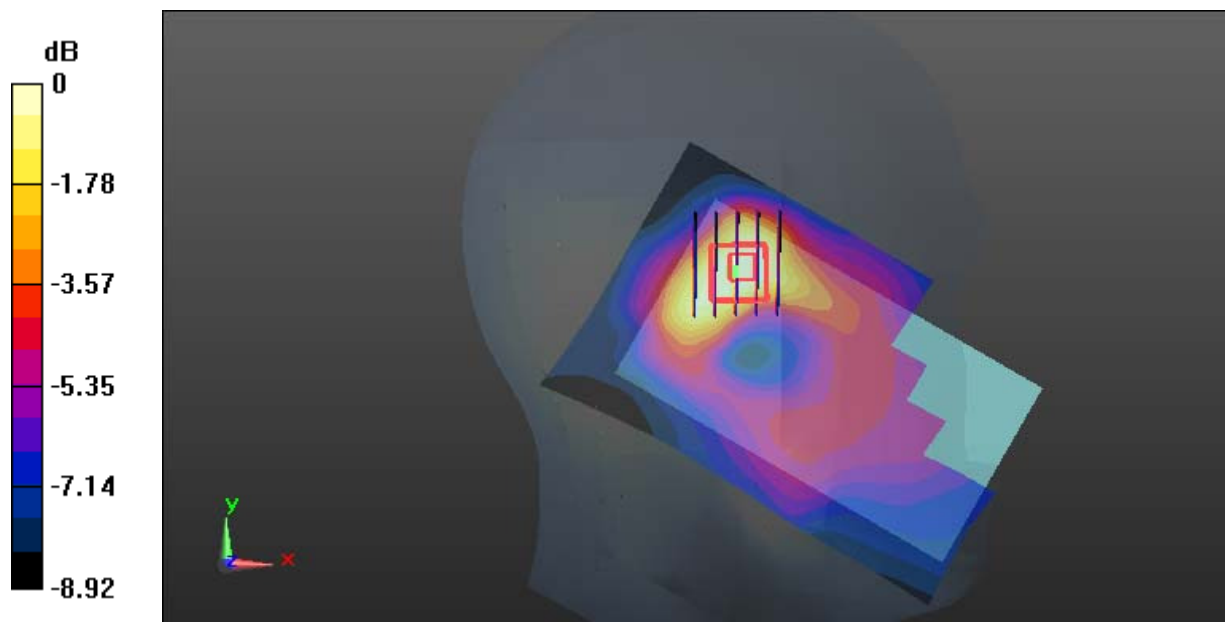
**Zoom Scan (5x6x7)/Cube 0:** Measurement grid: dx=8mm, dy=8mm, dz=5mm

Reference Value = 8.333 V/m; Power Drift = -0.16 dB

Peak SAR (extrapolated) = 0.168 W/kg

**SAR(1 g) = 0.104 W/kg; SAR(10 g) = 0.066 W/kg**

Maximum value of SAR (measured) = 0.138 W/kg



0 dB = 0.138 W/kg = -8.60 dBW/kg

**Test Plot 13#: GSM 1900\_Head Right Cheek\_Middle****DUT: Mobile Phone; Type: Ranger 5; Serial: 18030800320**

Communication System: Generic GSM; Frequency: 1880 MHz; Duty Cycle: 1:8  
Medium parameters used:  $f = 1880$  MHz;  $\sigma = 1.367$  S/m;  $\epsilon_r = 40.415$ ;  $\rho = 1000$  kg/m<sup>3</sup> ;  
Phantom section: Right Section

DASY5 Configuration:

- Probe: EX3DV4 - SN7441; ConvF(7.9, 7.9, 7.9); Calibrated: 2017/11/2;
- Sensor-Surface: 1.4mm (Mechanical Surface Detection)
- Electronics: DAE4 Sn1459; Calibrated: 2017/9/15
- Phantom: SAM (30deg probe tilt) with CRP v5.0\_20150321; Type: QD000P40CD; Serial: TP:1874
- Measurement SW: DASY52, Version 52.8 (8);

**Area Scan (121x71x1):** Interpolated grid: dx=1.500 mm, dy=1.500 mm

Maximum value of SAR (interpolated) = 0.359 W/kg

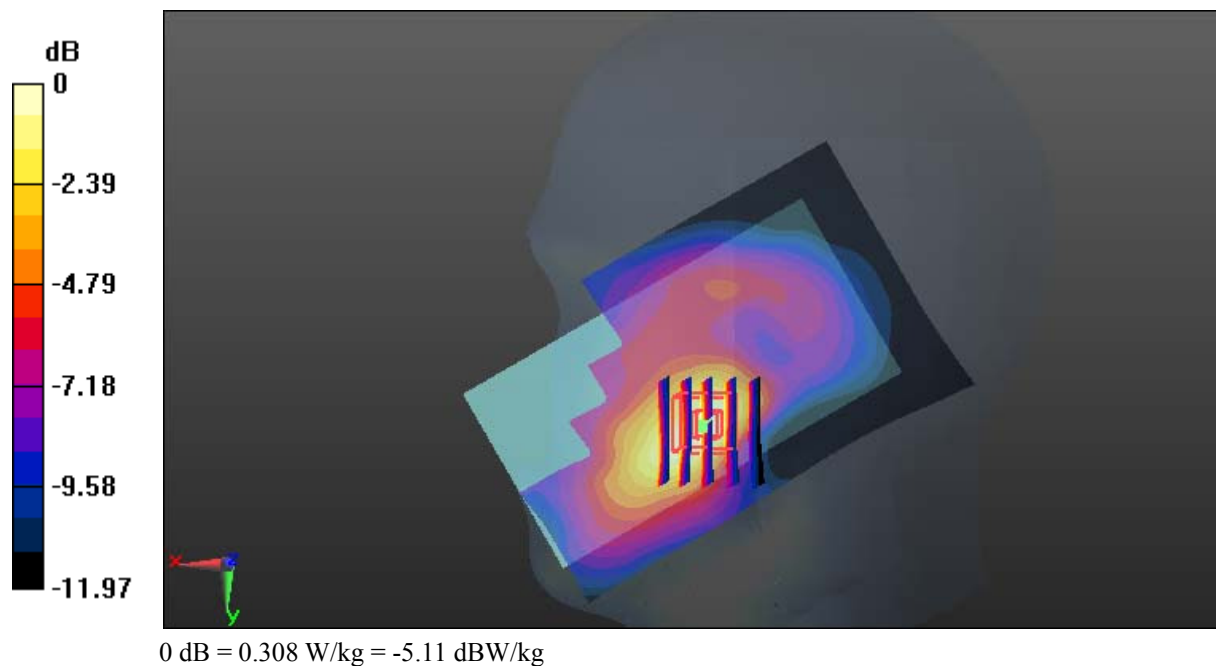
**Zoom Scan (5x6x7)/Cube 0:** Measurement grid: dx=8mm, dy=8mm, dz=5mm

Reference Value = 5.788 V/m; Power Drift = 0.06 dB

Peak SAR (extrapolated) = 0.387 W/kg

**SAR(1 g) = 0.222 W/kg; SAR(10 g) = 0.131 W/kg**

Maximum value of SAR (measured) = 0.308 W/kg



**Test Plot 14#: GSM 1900\_Head Right Tilt\_Middle****DUT: Mobile Phone; Type: Ranger 5; Serial: 18030800320**

Communication System: Generic GSM; Frequency: 1880 MHz; Duty Cycle: 1:8  
Medium parameters used:  $f = 1880$  MHz;  $\sigma = 1.367$  S/m;  $\epsilon_r = 40.415$ ;  $\rho = 1000$  kg/m<sup>3</sup> ;  
Phantom section: Right Section

DASY5 Configuration:

- Probe: EX3DV4 - SN7441; ConvF(7.9, 7.9, 7.9); Calibrated: 2017/11/2;
- Sensor-Surface: 1.4mm (Mechanical Surface Detection)
- Electronics: DAE4 Sn1459; Calibrated: 2017/9/15
- Phantom: SAM (30deg probe tilt) with CRP v5.0\_20150321; Type: QD000P40CD; Serial: TP:1874
- Measurement SW: DASY52, Version 52.8 (8);

**Area Scan (121x71x1):** Interpolated grid: dx=1.500 mm, dy=1.500 mm

Maximum value of SAR (interpolated) = 0.133 W/kg

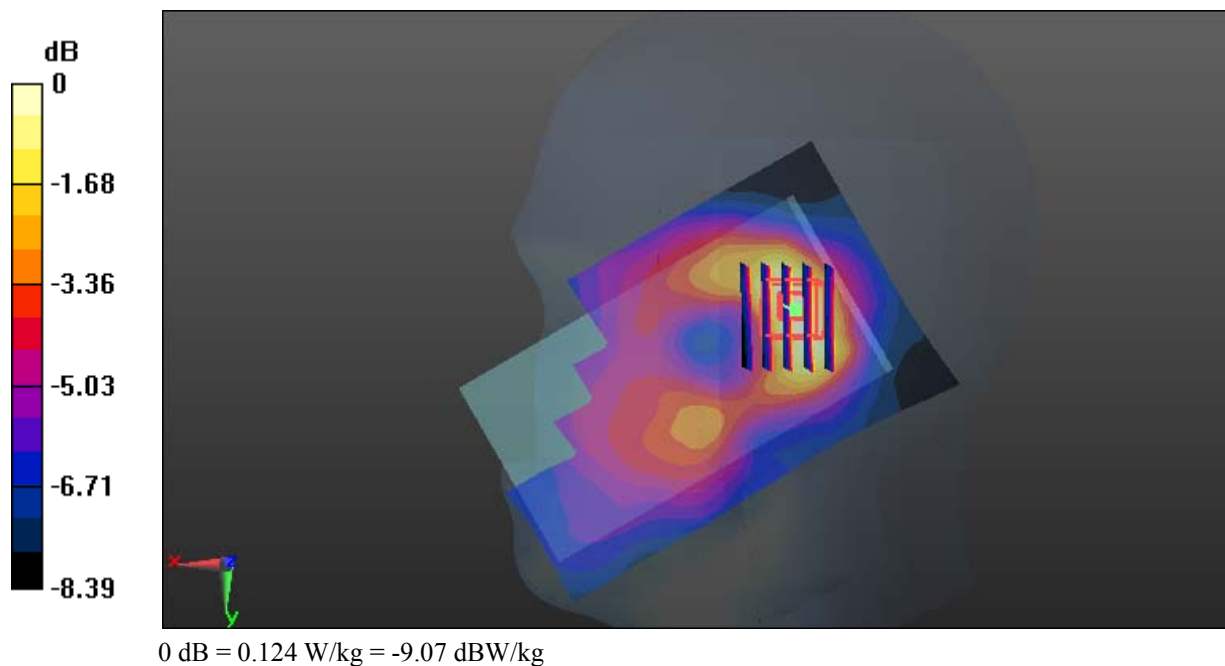
**Zoom Scan (5x6x7)/Cube 0:** Measurement grid: dx=8mm, dy=8mm, dz=5mm

Reference Value = 7.942 V/m; Power Drift = -0.14 dB

Peak SAR (extrapolated) = 0.145 W/kg

**SAR(1 g) = 0.088 W/kg; SAR(10 g) = 0.057 W/kg**

Maximum value of SAR (measured) = 0.124 W/kg



**Test Plot 15#: GSM 1900\_Body Worn Back\_Middle****DUT: Mobile Phone; Type: Ranger 5; Serial: 18030800320**

Communication System: Generic GSM; Frequency: 1880 MHz; Duty Cycle: 1:8  
Medium parameters used:  $f = 1880$  MHz;  $\sigma = 1.494$  S/m;  $\epsilon_r = 54.185$ ;  $\rho = 1000$  kg/m<sup>3</sup> ;  
Phantom section: Flat Section

DASY5 Configuration:

- Probe: EX3DV4 - SN7441; ConvF(7.79, 7.79, 7.79); Calibrated: 2017/11/2;
- Sensor-Surface: 1.4mm (Mechanical Surface Detection)
- Electronics: DAE4 Sn1459; Calibrated: 2017/9/15
- Phantom: SAM (30deg probe tilt) with CRP v5.0\_20150321; Type: QD000P40CD; Serial: TP:1874
- Measurement SW: DASY52, Version 52.8 (8);

**Area Scan (71x121x1):** Interpolated grid: dx=1.500 mm, dy=1.500 mm

Maximum value of SAR (interpolated) = 0.638 W/kg

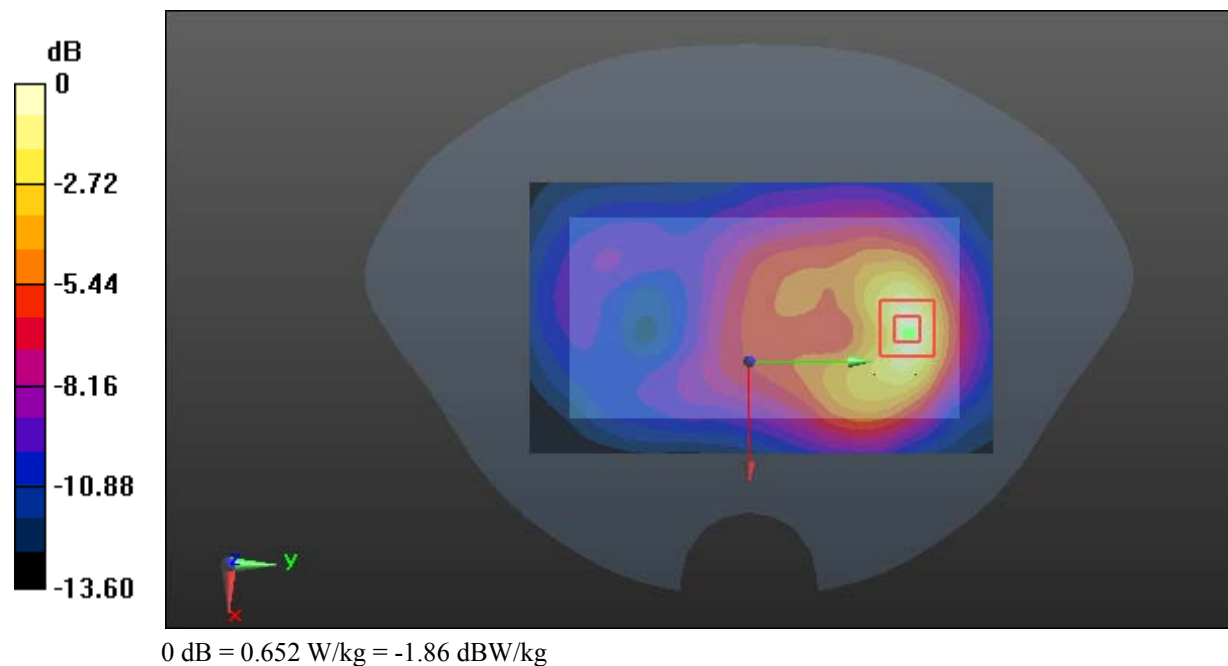
**Zoom Scan (5x6x7)/Cube 0:** Measurement grid: dx=8mm, dy=8mm, dz=5mm

Reference Value = 9.238 V/m; Power Drift = -0.12 dB

Peak SAR (extrapolated) = 0.803 W/kg

**SAR(1 g) = 0.426 W/kg; SAR(10 g) = 0.230 W/kg**

Maximum value of SAR (measured) = 0.652 W/kg



**Test Plot 16#: GSM 1900\_Body Back\_Low****DUT: Mobile Phone; Type: Ranger 5; Serial: 18030800320**

Communication System: Generic GPRS-4 slots; Frequency: 1850.2 MHz; Duty Cycle: 1:2  
Medium parameters used:  $f = 1850.2$  MHz;  $\sigma = 1.46$  S/m;  $\epsilon_r = 54.619$ ;  $\rho = 1000$  kg/m<sup>3</sup> ;  
Phantom section: Flat Section

DASY5 Configuration:

- Probe: EX3DV4 - SN7441; ConvF(7.79, 7.79, 7.79); Calibrated: 2017/11/2;
- Sensor-Surface: 1.4mm (Mechanical Surface Detection)
- Electronics: DAE4 Sn1459; Calibrated: 2017/9/15
- Phantom: SAM (30deg probe tilt) with CRP v5.0\_20150321; Type: QD000P40CD; Serial: TP:1874
- Measurement SW: DASY52, Version 52.8 (8);

**Area Scan (71x121x1):** Interpolated grid: dx=1.500 mm, dy=1.500 mm

Maximum value of SAR (interpolated) = 1.36 W/kg

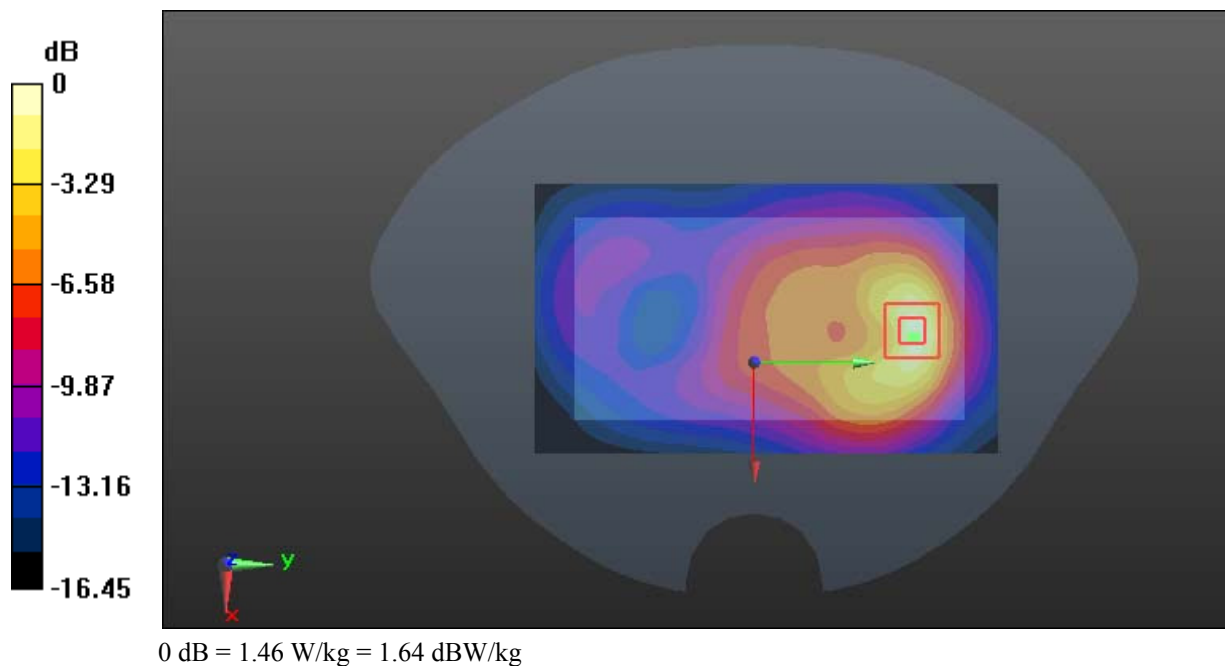
**Zoom Scan (5x6x7)/Cube 0:** Measurement grid: dx=8mm, dy=8mm, dz=5mm

Reference Value = 12.24 V/m; Power Drift = -0.06 dB

Peak SAR (extrapolated) = 1.81 W/kg

**SAR(1 g) = 0.919 W/kg; SAR(10 g) = 0.465 W/kg**

Maximum value of SAR (measured) = 1.46 W/kg





**Test Plot 17#: GSM 1900\_Body Back\_Middle****DUT: Mobile Phone; Type: Ranger 5; Serial: 18030800320**

Communication System: Generic GPRS-4 slots; Frequency: 1880 MHz; Duty Cycle: 1:2  
Medium parameters used:  $f = 1880$  MHz;  $\sigma = 1.494$  S/m;  $\epsilon_r = 54.185$ ;  $\rho = 1000$  kg/m<sup>3</sup> ;  
Phantom section: Flat Section

DASY5 Configuration:

- Probe: EX3DV4 - SN7441; ConvF(7.79, 7.79, 7.79); Calibrated: 2017/11/2;
- Sensor-Surface: 1.4mm (Mechanical Surface Detection)
- Electronics: DAE4 Sn1459; Calibrated: 2017/9/15
- Phantom: SAM (30deg probe tilt) with CRP v5.0\_20150321; Type: QD000P40CD; Serial: TP:1874
- Measurement SW: DASY52, Version 52.8 (8);

**Area Scan (71x121x1):** Interpolated grid: dx=1.500 mm, dy=1.500 mm

Maximum value of SAR (interpolated) = 1.55 W/kg

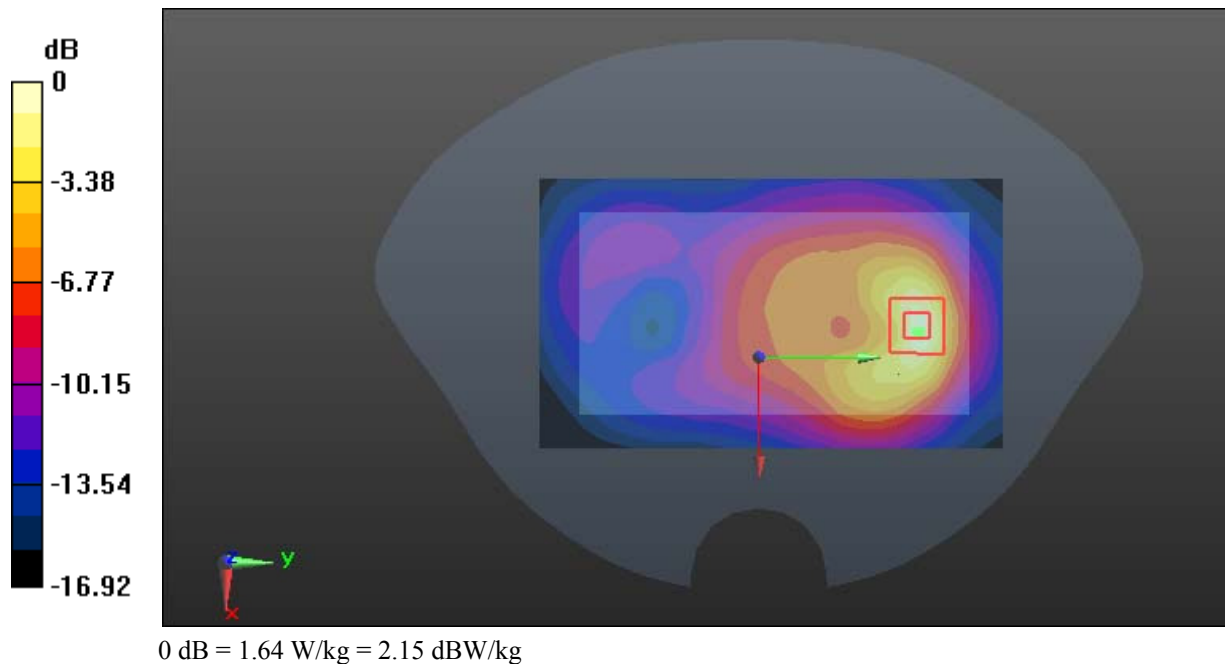
**Zoom Scan (5x6x7)/Cube 0:** Measurement grid: dx=8mm, dy=8mm, dz=5mm

Reference Value = 12.85 V/m; Power Drift = -0.05 dB

Peak SAR (extrapolated) = 2.04 W/kg

**SAR(1 g) = 1.04 W/kg; SAR(10 g) = 0.524 W/kg**

Maximum value of SAR (measured) = 1.64 W/kg



**Test Plot 18#: GSM 1900\_Body Back\_High****DUT: Mobile Phone; Type: Ranger 5; Serial: 18030800320**

Communication System: Generic GPRS-4 slots; Frequency: 1909.8 MHz; Duty Cycle: 1:2  
Medium parameters used:  $f = 1909.8$  MHz;  $\sigma = 1.522$  S/m;  $\epsilon_r = 54.082$ ;  $\rho = 1000$  kg/m<sup>3</sup> ;  
Phantom section: Flat Section

DASY5 Configuration:

- Probe: EX3DV4 - SN7441; ConvF(7.79, 7.79, 7.79); Calibrated: 2017/11/2;
- Sensor-Surface: 1.4mm (Mechanical Surface Detection)
- Electronics: DAE4 Sn1459; Calibrated: 2017/9/15
- Phantom: SAM (30deg probe tilt) with CRP v5.0\_20150321; Type: QD000P40CD; Serial: TP:1874
- Measurement SW: DASY52, Version 52.8 (8);

**Area Scan (71x121x1):** Interpolated grid: dx=1.500 mm, dy=1.500 mm

Maximum value of SAR (interpolated) = 1.66 W/kg

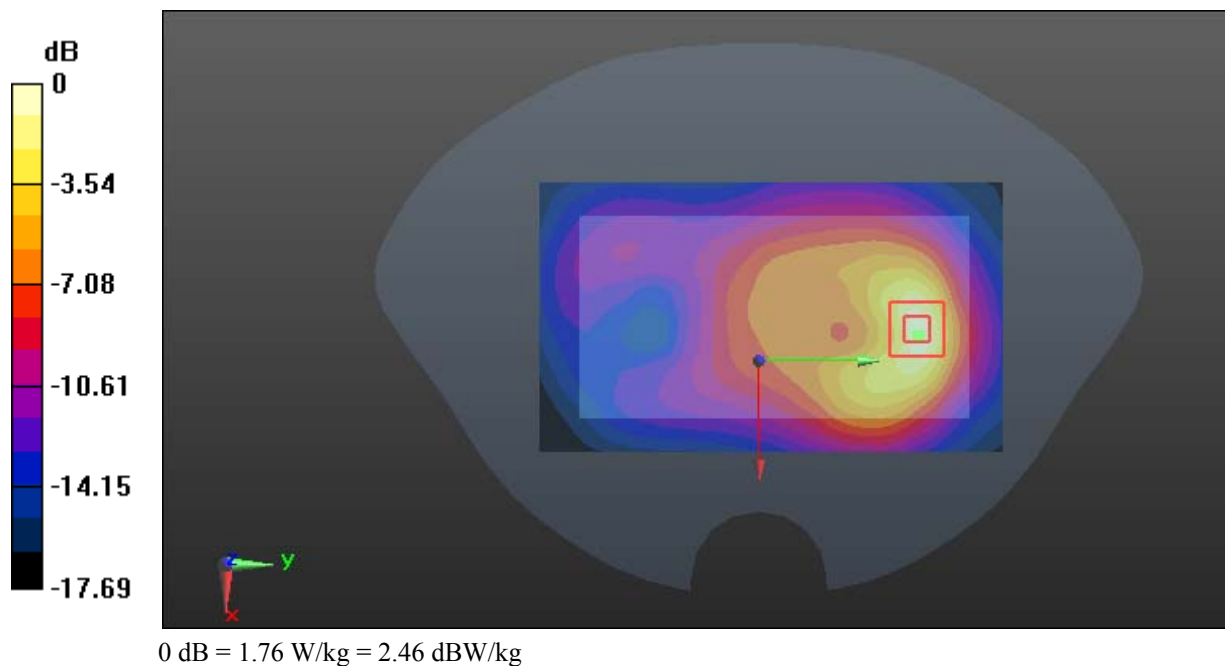
**Zoom Scan (5x6x7)/Cube 0:** Measurement grid: dx=8mm, dy=8mm, dz=5mm

Reference Value = 13.39 V/m; Power Drift = -0.04 dB

Peak SAR (extrapolated) = 2.39 W/kg

**SAR(1 g) = 1.12 W/kg; SAR(10 g) = 0.555 W/kg**

Maximum value of SAR (measured) = 1.76 W/kg



**Test Plot 19#: GSM 1900\_Body Right\_Middle****DUT: Mobile Phone; Type: Ranger 5; Serial: 18030800320**

Communication System: Generic GPRS-4 slots; Frequency: 1880 MHz; Duty Cycle: 1:2  
Medium parameters used:  $f = 1880$  MHz;  $\sigma = 1.494$  S/m;  $\epsilon_r = 54.185$ ;  $\rho = 1000$  kg/m<sup>3</sup> ;  
Phantom section: Flat Section

DASY5 Configuration:

- Probe: EX3DV4 - SN7441; ConvF(7.79, 7.79, 7.79); Calibrated: 2017/11/2;
- Sensor-Surface: 1.4mm (Mechanical Surface Detection)
- Electronics: DAE4 Sn1459; Calibrated: 2017/9/15
- Phantom: SAM (30deg probe tilt) with CRP v5.0\_20150321; Type: QD000P40CD; Serial: TP:1874
- Measurement SW: DASY52, Version 52.8 (8);

**Area Scan (51x121x1):** Interpolated grid: dx=1.500 mm, dy=1.500 mm

Maximum value of SAR (interpolated) = 0.355 W/kg

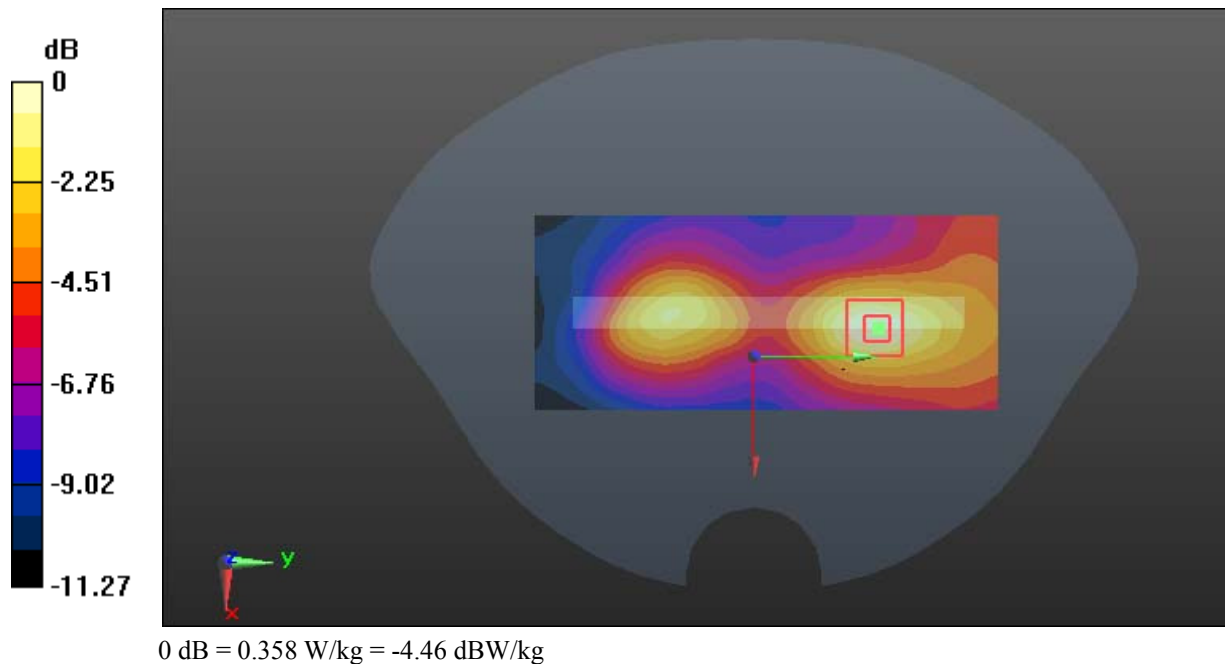
**Zoom Scan (5x6x7)/Cube 0:** Measurement grid: dx=8mm, dy=8mm, dz=5mm

Reference Value = 7.948 V/m; Power Drift = -0.10 dB

Peak SAR (extrapolated) = 0.431 W/kg

**SAR(1 g) = 0.241 W/kg; SAR(10 g) = 0.142 W/kg**

Maximum value of SAR (measured) = 0.358 W/kg



**Test Plot 20#: GSM 1900\_Body Bottom\_Low****DUT: Mobile Phone; Type: Ranger 5; Serial: 18030800320**

Communication System: Generic GPRS-4 slots; Frequency: 1850.2 MHz; Duty Cycle: 1:2  
Medium parameters used:  $f = 1850.2$  MHz;  $\sigma = 1.46$  S/m;  $\epsilon_r = 54.619$ ;  $\rho = 1000$  kg/m<sup>3</sup> ;  
Phantom section: Flat Section

DASY5 Configuration:

- Probe: EX3DV4 - SN7441; ConvF(7.79, 7.79, 7.79); Calibrated: 2017/11/2;
- Sensor-Surface: 1.4mm (Mechanical Surface Detection)
- Electronics: DAE4 Sn1459; Calibrated: 2017/9/15
- Phantom: SAM (30deg probe tilt) with CRP v5.0\_20150321; Type: QD000P40CD; Serial: TP:1874
- Measurement SW: DASY52, Version 52.8 (8);

**Area Scan (51x81x1):** Interpolated grid: dx=1.500 mm, dy=1.500 mm

Maximum value of SAR (interpolated) = 1.21 W/kg

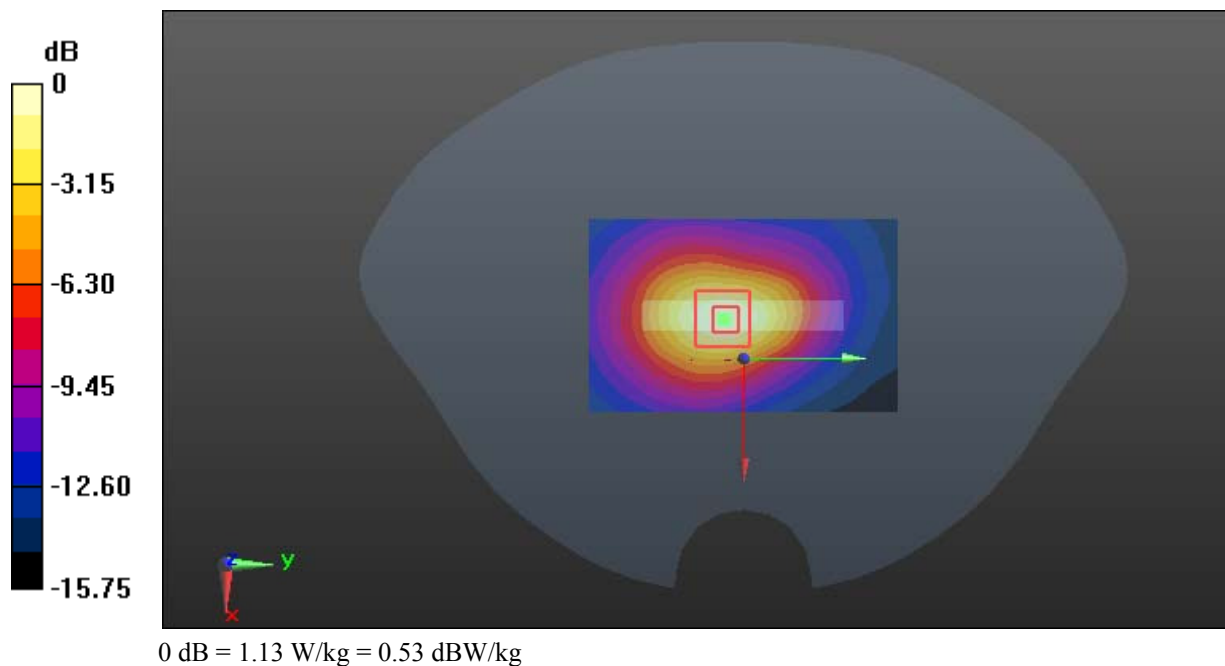
**Zoom Scan (5x6x7)/Cube 0:** Measurement grid: dx=8mm, dy=8mm, dz=5mm

Reference Value = 22.63 V/m; Power Drift = -0.02 dB

Peak SAR (extrapolated) = 1.36 W/kg

**SAR(1 g) = 0.753 W/kg; SAR(10 g) = 0.415 W/kg**

Maximum value of SAR (measured) = 1.13 W/kg



**Test Plot 21#: GSM 1900\_Body Bottom\_Middle****DUT: Mobile Phone; Type: Ranger 5; Serial: 18030800320**

Communication System: Generic GPRS-4 slots; Frequency: 1880 MHz; Duty Cycle: 1:2  
Medium parameters used:  $f = 1880$  MHz;  $\sigma = 1.494$  S/m;  $\epsilon_r = 54.185$ ;  $\rho = 1000$  kg/m<sup>3</sup> ;  
Phantom section: Flat Section

DASY5 Configuration:

- Probe: EX3DV4 - SN7441; ConvF(7.79, 7.79, 7.79); Calibrated: 2017/11/2;
- Sensor-Surface: 1.4mm (Mechanical Surface Detection)
- Electronics: DAE4 Sn1459; Calibrated: 2017/9/15
- Phantom: SAM (30deg probe tilt) with CRP v5.0\_20150321; Type: QD000P40CD; Serial: TP:1874
- Measurement SW: DASY52, Version 52.8 (8);

**Area Scan (51x81x1):** Interpolated grid: dx=1.500 mm, dy=1.500 mm

Maximum value of SAR (interpolated) = 1.41 W/kg

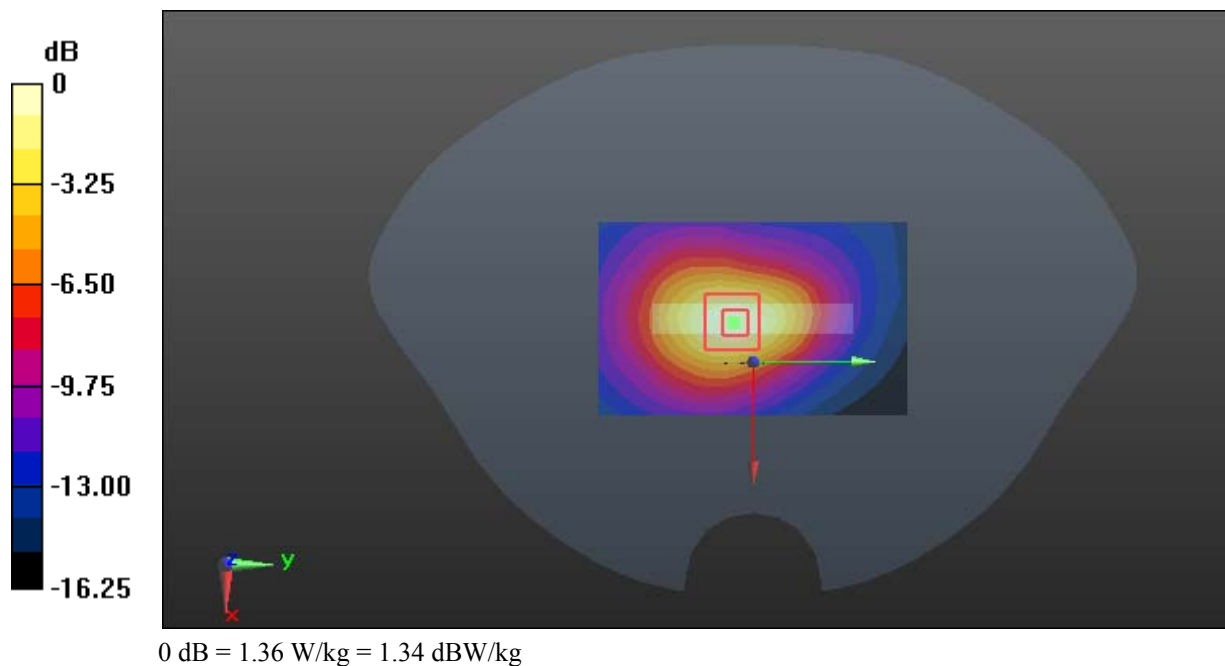
**Zoom Scan (5x6x7)/Cube 0:** Measurement grid: dx=8mm, dy=8mm, dz=5mm

Reference Value = 24.14 V/m; Power Drift = -0.02 dB

Peak SAR (extrapolated) = 1.65 W/kg

**SAR(1 g) = 0.884 W/kg; SAR(10 g) = 0.483 W/kg**

Maximum value of SAR (measured) = 1.36 W/kg



**Test Plot 22#: GSM 1900\_Body Bottom\_High****DUT: Mobile Phone; Type: Ranger 5; Serial: 18030800320**

Communication System: Generic GPRS-4 slots; Frequency: 1909.8 MHz; Duty Cycle: 1:2  
Medium parameters used:  $f = 1909.8$  MHz;  $\sigma = 1.522$  S/m;  $\epsilon_r = 54.082$ ;  $\rho = 1000$  kg/m<sup>3</sup> ;  
Phantom section: Flat Section

DASY5 Configuration:

- Probe: EX3DV4 - SN7441; ConvF(7.79, 7.79, 7.79); Calibrated: 2017/11/2;
- Sensor-Surface: 1.4mm (Mechanical Surface Detection)
- Electronics: DAE4 Sn1459; Calibrated: 2017/9/15
- Phantom: SAM (30deg probe tilt) with CRP v5.0\_20150321; Type: QD000P40CD; Serial: TP:1874
- Measurement SW: DASY52, Version 52.8 (8);

**Area Scan (51x81x1):** Interpolated grid: dx=1.500 mm, dy=1.500 mm

Maximum value of SAR (interpolated) = 1.46 W/kg

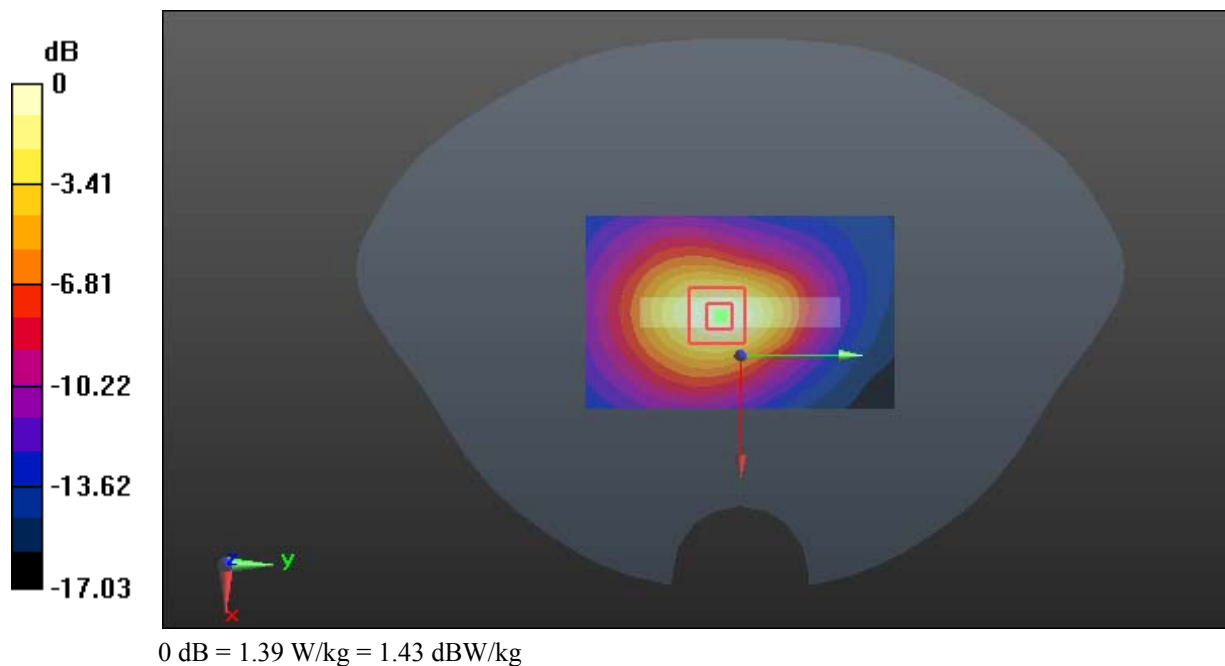
**Zoom Scan (5x6x7)/Cube 0:** Measurement grid: dx=8mm, dy=8mm, dz=5mm

Reference Value = 24.24 V/m; Power Drift = -0.08 dB

Peak SAR (extrapolated) = 1.69 W/kg

**SAR(1 g) = 0.907 W/kg; SAR(10 g) = 0.494 W/kg**

Maximum value of SAR (measured) = 1.39 W/kg



**Test Plot 23#: WCDMA Band 2\_Head Left Cheek\_Middle**

**DUT: Mobile Phone; Type: Ranger 5; Serial: 18030800320**

Communication System: WCDMA; Frequency: 1880 MHz; Duty Cycle: 1:1  
 Medium parameters used:  $f = 1880 \text{ MHz}$ ;  $\sigma = 1.367 \text{ S/m}$ ;  $\epsilon_r = 40.415$ ;  $\rho = 1000 \text{ kg/m}^3$  ;  
 Phantom section: Left Section

DASY5 Configuration:

- Probe: EX3DV4 - SN7441; ConvF(7.9, 7.9, 7.9); Calibrated: 2017/11/2;
- Sensor-Surface: 1.4mm (Mechanical Surface Detection)
- Electronics: DAE4 Sn1459; Calibrated: 2017/9/15
- Phantom: SAM (30deg probe tilt) with CRP v5.0\_20150321; Type: QD000P40CD; Serial: TP:1874
- Measurement SW: DASY52, Version 52.8 (8);

**Area Scan (121x71x1):** Interpolated grid:  $dx=1.500 \text{ mm}$ ,  $dy=1.500 \text{ mm}$

Maximum value of SAR (interpolated) = 0.329 W/kg

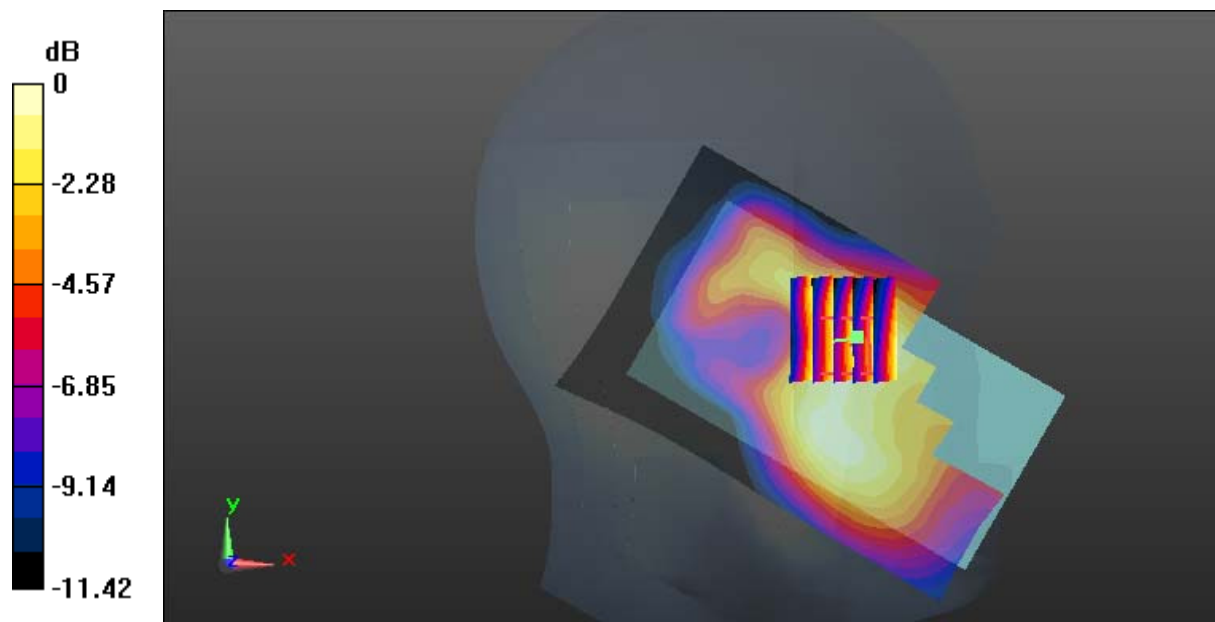
**Zoom Scan (5x6x7)/Cube 0:** Measurement grid:  $dx=8\text{mm}$ ,  $dy=8\text{mm}$ ,  $dz=5\text{mm}$

Reference Value = 7.819 V/m; Power Drift = -0.08 dB

Peak SAR (extrapolated) = 0.355 W/kg

**SAR(1 g) = 0.231 W/kg; SAR(10 g) = 0.156 W/kg**

Maximum value of SAR (measured) = 0.303 W/kg



0 dB = 0.303 W/kg = -5.19 dBW/kg

**Test Plot 24#: WCDMA Band 2\_Head Left Tilt\_Middle**

**DUT: Mobile Phone; Type: Ranger 5; Serial: 18030800320**

Communication System: WCDMA; Frequency: 1880 MHz; Duty Cycle: 1:1  
 Medium parameters used:  $f = 1880 \text{ MHz}$ ;  $\sigma = 1.367 \text{ S/m}$ ;  $\epsilon_r = 40.415$ ;  $\rho = 1000 \text{ kg/m}^3$  ;  
 Phantom section: Left Section

DASY5 Configuration:

- Probe: EX3DV4 - SN7441; ConvF(7.9, 7.9, 7.9); Calibrated: 2017/11/2;
- Sensor-Surface: 1.4mm (Mechanical Surface Detection)
- Electronics: DAE4 Sn1459; Calibrated: 2017/9/15
- Phantom: SAM (30deg probe tilt) with CRP v5.0\_20150321; Type: QD000P40CD; Serial: TP:1874
- Measurement SW: DASY52, Version 52.8 (8);

**Area Scan (121x71x1):** Interpolated grid:  $dx=1.500 \text{ mm}$ ,  $dy=1.500 \text{ mm}$

Maximum value of SAR (interpolated) = 0.232 W/kg

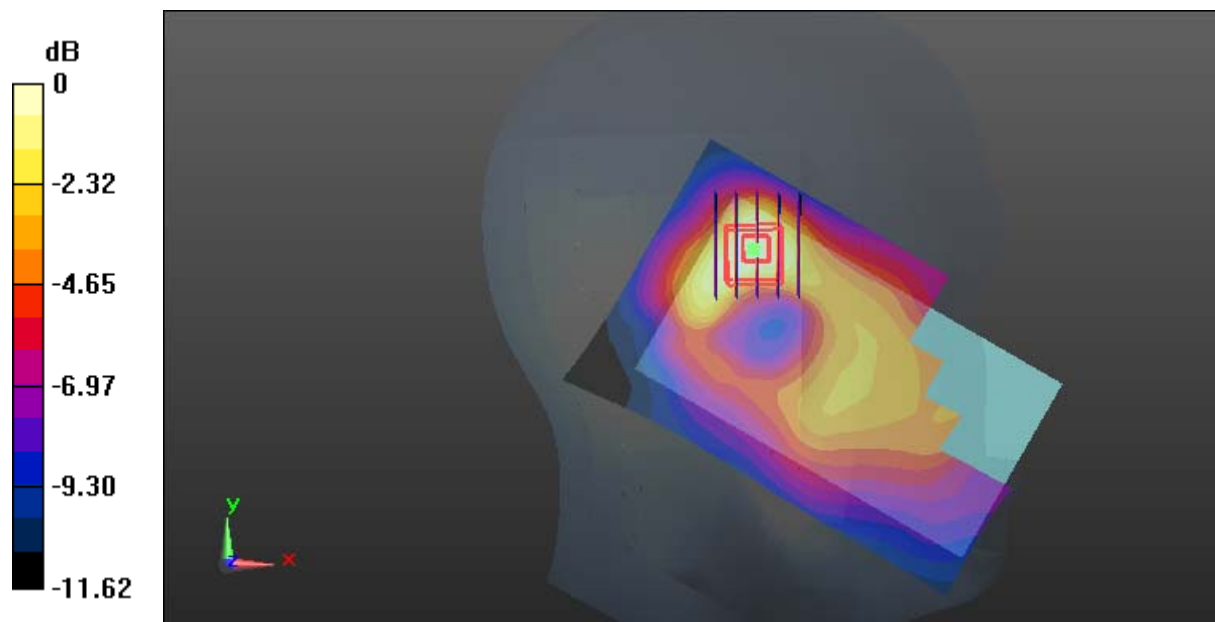
**Zoom Scan (5x6x7)/Cube 0:** Measurement grid:  $dx=8\text{mm}$ ,  $dy=8\text{mm}$ ,  $dz=5\text{mm}$

Reference Value = 9.283 V/m; Power Drift = 0.03 dB

Peak SAR (extrapolated) = 0.254 W/kg

**SAR(1 g) = 0.159 W/kg; SAR(10 g) = 0.097 W/kg**

Maximum value of SAR (measured) = 0.213 W/kg



0 dB = 0.213 W/kg = -6.72 dBW/kg



**Test Plot 25#: WCDMA Band 2\_Head Right Cheek\_Middle****DUT: Mobile Phone; Type: Ranger 5; Serial: 18030800320**

Communication System: WCDMA; Frequency: 1880 MHz; Duty Cycle: 1:1  
Medium parameters used:  $f = 1880$  MHz;  $\sigma = 1.367$  S/m;  $\epsilon_r = 40.415$ ;  $\rho = 1000$  kg/m<sup>3</sup> ;  
Phantom section: Right Section

DASY5 Configuration:

- Probe: EX3DV4 - SN7441; ConvF(7.9, 7.9, 7.9); Calibrated: 2017/11/2;
- Sensor-Surface: 1.4mm (Mechanical Surface Detection)
- Electronics: DAE4 Sn1459; Calibrated: 2017/9/15
- Phantom: SAM (30deg probe tilt) with CRP v5.0\_20150321; Type: QD000P40CD; Serial: TP:1874
- Measurement SW: DASY52, Version 52.8 (8);

**Area Scan (121x71x1):** Interpolated grid:  $dx=1.500$  mm,  $dy=1.500$  mm

Maximum value of SAR (interpolated) = 0.630 W/kg

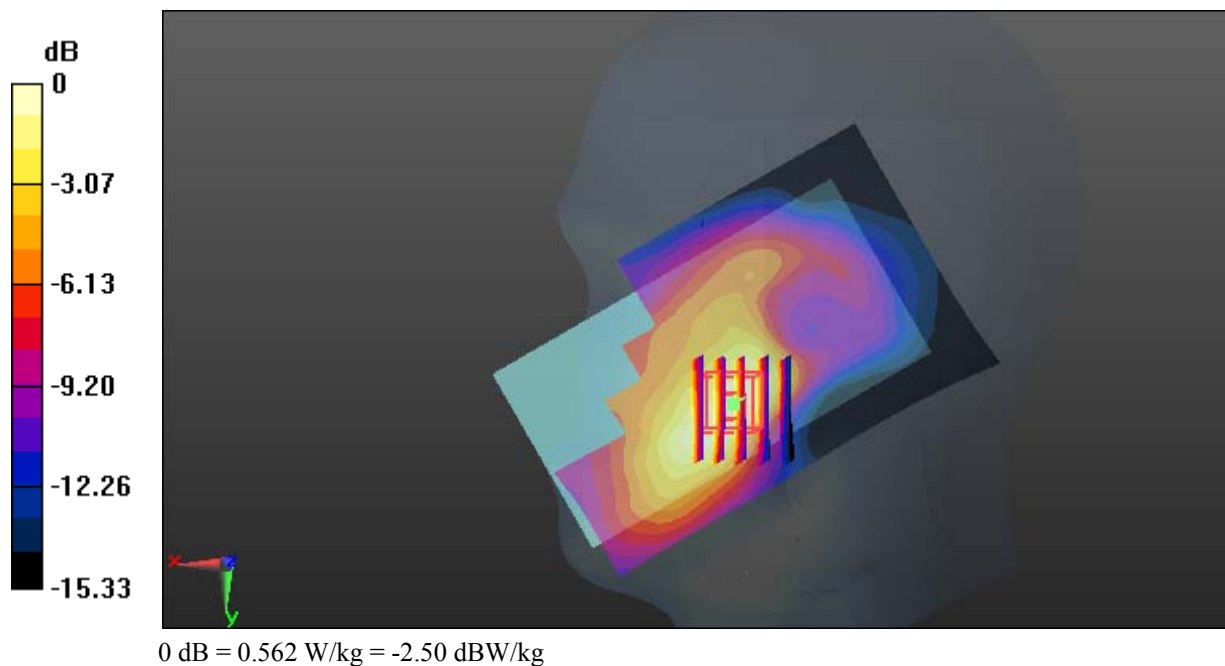
**Zoom Scan (5x6x7)/Cube 0:** Measurement grid:  $dx=8$ mm,  $dy=8$ mm,  $dz=5$ mm

Reference Value = 6.935 V/m; Power Drift = -0.09 dB

Peak SAR (extrapolated) = 0.655 W/kg

**SAR(1 g) = 0.413 W/kg; SAR(10 g) = 0.257 W/kg**

Maximum value of SAR (measured) = 0.562 W/kg



**Test Plot 26#: WCDMA Band 2\_Head Right Tilt\_Middle****DUT: Mobile Phone; Type: Ranger 5; Serial: 18030800320**

Communication System: WCDMA; Frequency: 1880 MHz; Duty Cycle: 1:1  
Medium parameters used:  $f = 1880$  MHz;  $\sigma = 1.367$  S/m;  $\epsilon_r = 40.415$ ;  $\rho = 1000$  kg/m<sup>3</sup> ;  
Phantom section: Right Section

DASY5 Configuration:

- Probe: EX3DV4 - SN7441; ConvF(7.9, 7.9, 7.9); Calibrated: 2017/11/2;
- Sensor-Surface: 1.4mm (Mechanical Surface Detection)
- Electronics: DAE4 Sn1459; Calibrated: 2017/9/15
- Phantom: SAM (30deg probe tilt) with CRP v5.0\_20150321; Type: QD000P40CD; Serial: TP:1874
- Measurement SW: DASY52, Version 52.8 (8);

**Area Scan (121x71x1):** Interpolated grid: dx=1.500 mm, dy=1.500 mm

Maximum value of SAR (interpolated) = 0.152 W/kg

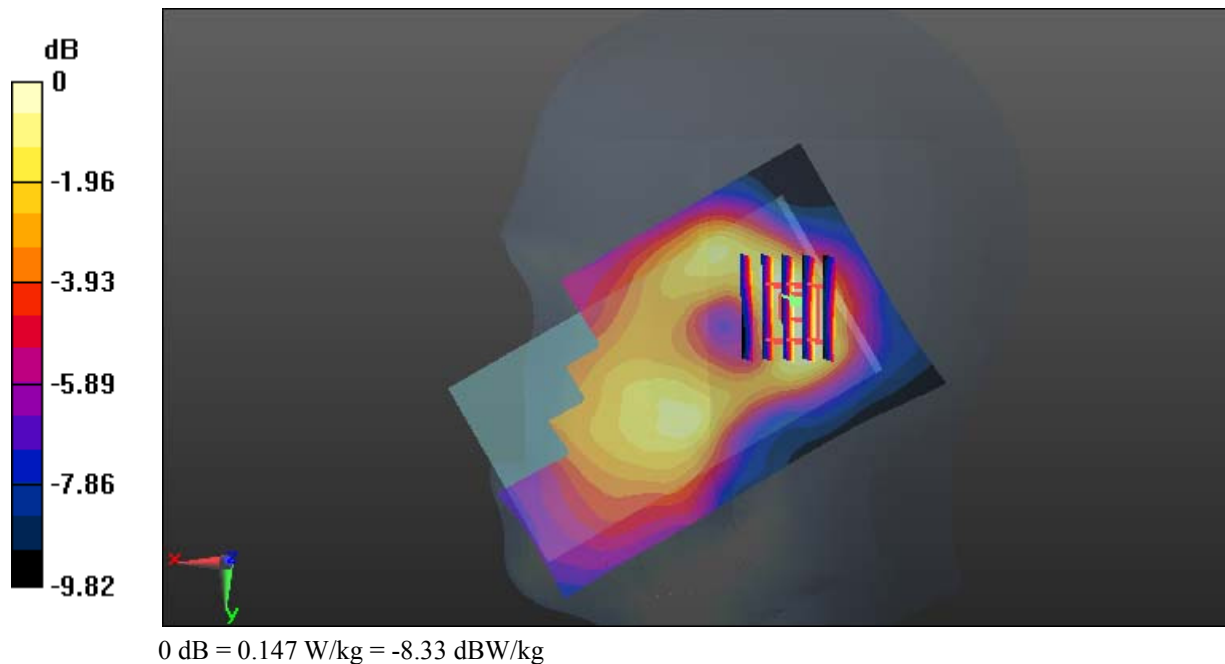
**Zoom Scan (5x6x7)/Cube 0:** Measurement grid: dx=8mm, dy=8mm, dz=5mm

Reference Value = 9.382 V/m; Power Drift = -0.11 dB

Peak SAR (extrapolated) = 0.171 W/kg

**SAR(1 g) = 0.106 W/kg; SAR(10 g) = 0.068 W/kg**

Maximum value of SAR (measured) = 0.147 W/kg



**Test Plot 27#: WCDMA Band 2\_Body Back\_Low****DUT: Mobile Phone; Type: Ranger 5; Serial: 18030800320**

Communication System: WCDMA; Frequency: 1852.4 MHz; Duty Cycle: 1:1  
Medium parameters used:  $f = 1852.4$  MHz;  $\sigma = 1.466$  S/m;  $\epsilon_r = 54.577$ ;  $\rho = 1000$  kg/m<sup>3</sup> ;  
Phantom section: Flat Section

DASY5 Configuration:

- Probe: EX3DV4 - SN7441; ConvF(7.79, 7.79, 7.79); Calibrated: 2017/11/2;
- Sensor-Surface: 1.4mm (Mechanical Surface Detection)
- Electronics: DAE4 Sn1459; Calibrated: 2017/9/15
- Phantom: SAM (30deg probe tilt) with CRP v5.0\_20150321; Type: QD000P40CD; Serial: TP:1874
- Measurement SW: DASY52, Version 52.8 (8);

**Area Scan (71x121x1):** Interpolated grid: dx=1.500 mm, dy=1.500 mm

Maximum value of SAR (interpolated) = 1.35 W/kg

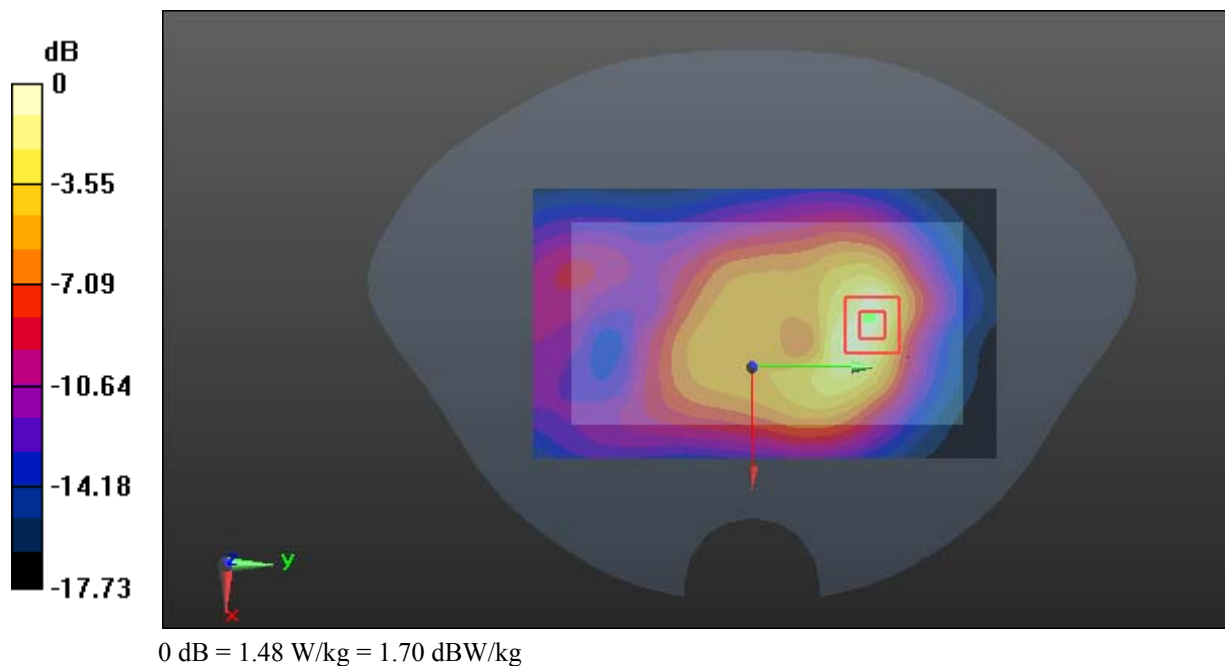
**Zoom Scan (5x6x7)/Cube 0:** Measurement grid: dx=8mm, dy=8mm, dz=5mm

Reference Value = 15.45 V/m; Power Drift = 0.16 dB

Peak SAR (extrapolated) = 1.80 W/kg

**SAR(1 g) = 0.997 W/kg; SAR(10 g) = 0.525 W/kg**

Maximum value of SAR (measured) = 1.48 W/kg



**Test Plot 28#: WCDMA Band 2\_Body Back\_Middle****DUT: Mobile Phone; Type: Ranger 5; Serial: 18030800320**

Communication System: WCDMA; Frequency: 1880 MHz; Duty Cycle: 1:1  
Medium parameters used:  $f = 1880$  MHz;  $\sigma = 1.494$  S/m;  $\epsilon_r = 54.185$ ;  $\rho = 1000$  kg/m<sup>3</sup> ;  
Phantom section: Flat Section

DASY5 Configuration:

- Probe: EX3DV4 - SN7441; ConvF(7.79, 7.79, 7.79); Calibrated: 2017/11/2;
- Sensor-Surface: 1.4mm (Mechanical Surface Detection)
- Electronics: DAE4 Sn1459; Calibrated: 2017/9/15
- Phantom: SAM (30deg probe tilt) with CRP v5.0\_20150321; Type: QD000P40CD; Serial: TP:1874
- Measurement SW: DASY52, Version 52.8 (8);

**Area Scan (71x121x1):** Interpolated grid: dx=1.500 mm, dy=1.500 mm

Maximum value of SAR (interpolated) = 1.36 W/kg

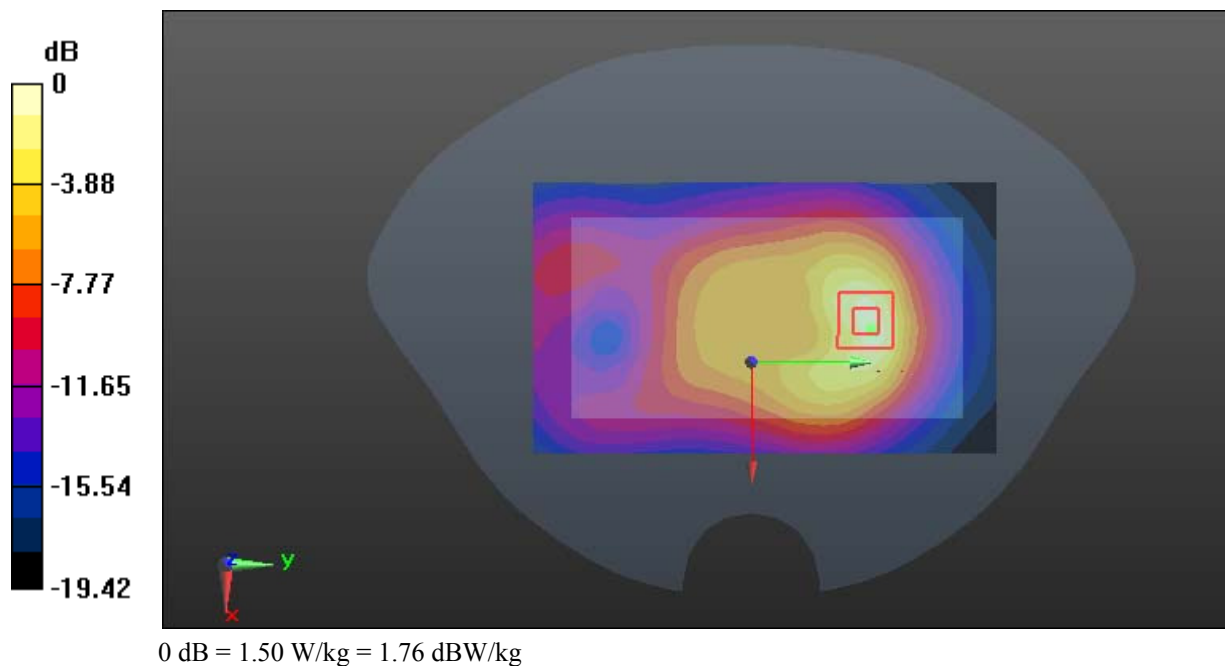
**Zoom Scan (5x6x7)/Cube 0:** Measurement grid: dx=8mm, dy=8mm, dz=5mm

Reference Value = 14.77 V/m; Power Drift = 0.04 dB

Peak SAR (extrapolated) = 1.88 W/kg

**SAR(1 g) = 1.02 W/kg; SAR(10 g) = 0.533 W/kg**

Maximum value of SAR (measured) = 1.50 W/kg



**Test Plot 29#: WCDMA Band 2\_Body Back\_High****DUT: Mobile Phone; Type: Ranger 5; Serial: 18030800320**

Communication System: WCDMA; Frequency: 1907.6 MHz; Duty Cycle: 1:1  
Medium parameters used:  $f = 1907.6$  MHz;  $\sigma = 1.518$  S/m;  $\epsilon_r = 54.091$ ;  $\rho = 1000$  kg/m<sup>3</sup> ;  
Phantom section: Flat Section

DASY5 Configuration:

- Probe: EX3DV4 - SN7441; ConvF(7.79, 7.79, 7.79); Calibrated: 2017/11/2;
- Sensor-Surface: 1.4mm (Mechanical Surface Detection)
- Electronics: DAE4 Sn1459; Calibrated: 2017/9/15
- Phantom: SAM (30deg probe tilt) with CRP v5.0\_20150321; Type: QD000P40CD; Serial: TP:1874
- Measurement SW: DASY52, Version 52.8 (8);

**Area Scan (71x121x1):** Interpolated grid: dx=1.500 mm, dy=1.500 mm

Maximum value of SAR (interpolated) = 1.51 W/kg

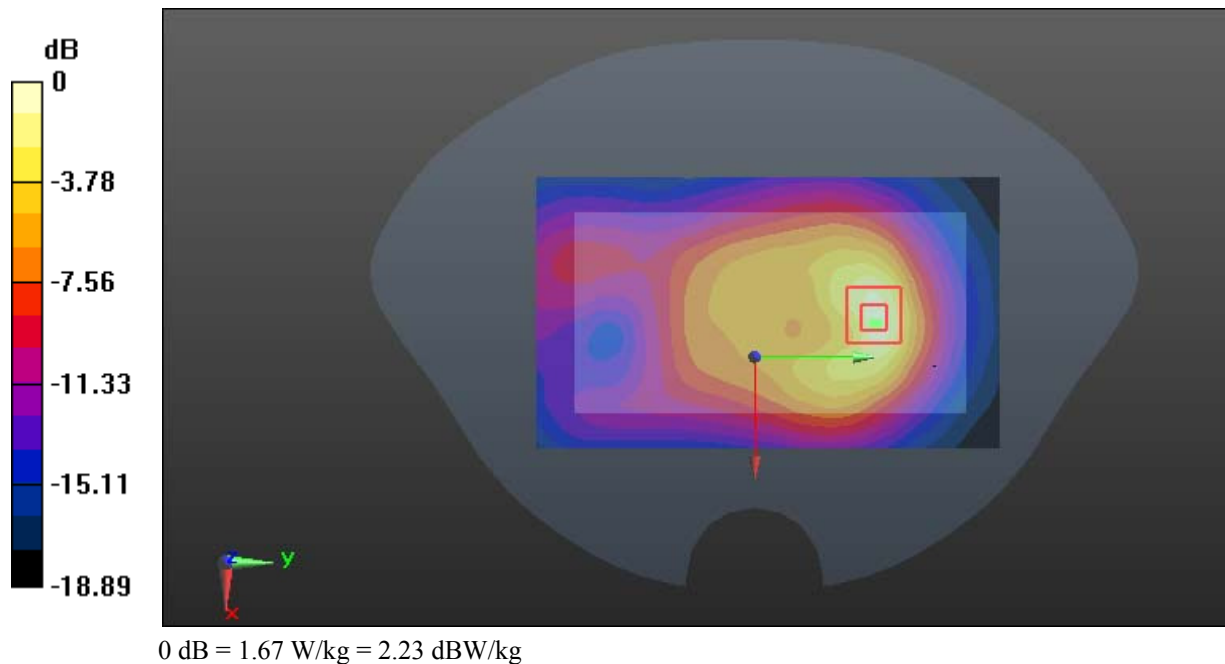
**Zoom Scan (5x6x7)/Cube 0:** Measurement grid: dx=8mm, dy=8mm, dz=5mm

Reference Value = 14.66 V/m; Power Drift = 0.01 dB

Peak SAR (extrapolated) = 2.02 W/kg

**SAR(1 g) = 1.09 W/kg; SAR(10 g) = 0.57 W/kg**

Maximum value of SAR (measured) = 1.67 W/kg



**Test Plot 30#: WCDMA Band 2\_Body Right\_Middle**

**DUT: Mobile Phone; Type: Ranger 5; Serial: 18030800320**

Communication System: WCDMA; Frequency: 1880 MHz; Duty Cycle: 1:1  
 Medium parameters used:  $f = 1880 \text{ MHz}$ ;  $\sigma = 1.494 \text{ S/m}$ ;  $\epsilon_r = 54.185$ ;  $\rho = 1000 \text{ kg/m}^3$  ;  
 Phantom section: Flat Section

DASY5 Configuration:

- Probe: EX3DV4 - SN7441; ConvF(7.79, 7.79, 7.79); Calibrated: 2017/11/2;
- Sensor-Surface: 1.4mm (Mechanical Surface Detection)
- Electronics: DAE4 Sn1459; Calibrated: 2017/9/15
- Phantom: SAM (30deg probe tilt) with CRP v5.0\_20150321; Type: QD000P40CD; Serial: TP:1874
- Measurement SW: DASY52, Version 52.8 (8);

**Area Scan (51x121x1):** Interpolated grid:  $dx=1.500 \text{ mm}$ ,  $dy=1.500 \text{ mm}$

Maximum value of SAR (interpolated) = 0.533 W/kg

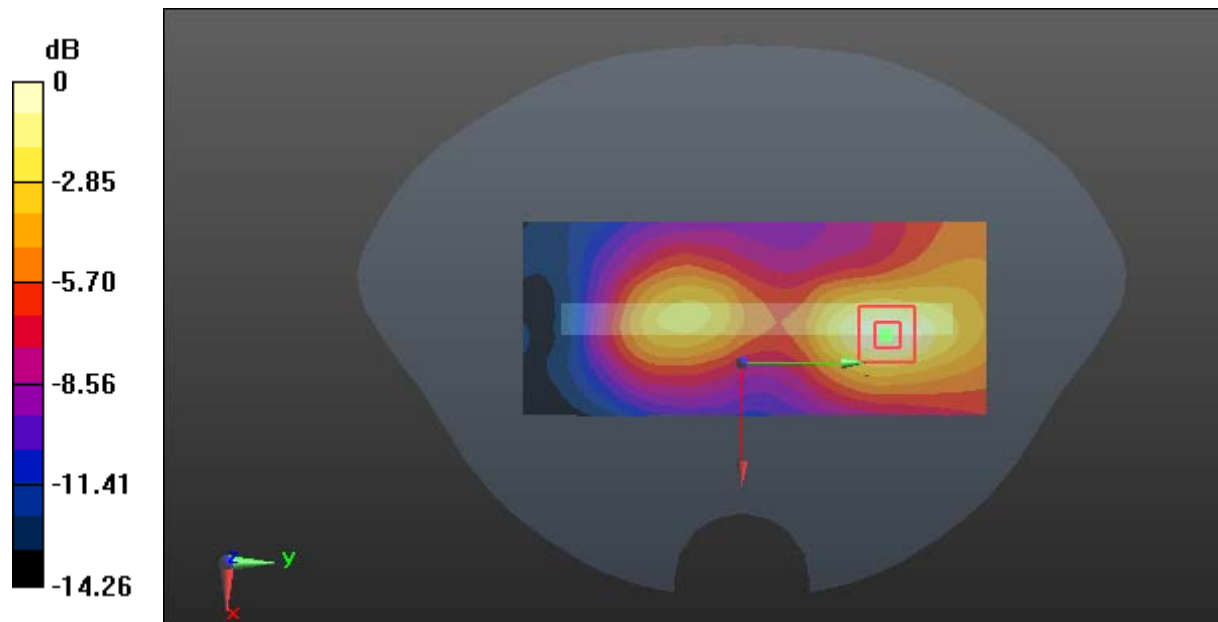
**Zoom Scan (5x6x7)/Cube 0:** Measurement grid:  $dx=8\text{mm}$ ,  $dy=8\text{mm}$ ,  $dz=5\text{mm}$

Reference Value = 10.27 V/m; Power Drift = -0.08 dB

Peak SAR (extrapolated) = 0.653 W/kg

**SAR(1 g) = 0.370 W/kg; SAR(10 g) = 0.211 W/kg**

Maximum value of SAR (measured) = 0.550 W/kg



0 dB = 0.550 W/kg = -2.60 dBW/kg

**Test Plot 31#: WCDMA Band 2\_Body Bottom\_Low****DUT: Mobile Phone; Type: Ranger 5; Serial: 18030800320**

Communication System: WCDMA; Frequency: 1852.4 MHz; Duty Cycle: 1:1  
Medium parameters used:  $f = 1852.4$  MHz;  $\sigma = 1.466$  S/m;  $\epsilon_r = 54.577$ ;  $\rho = 1000$  kg/m<sup>3</sup> ;  
Phantom section: Flat Section

DASY5 Configuration:

- Probe: EX3DV4 - SN7441; ConvF(7.79, 7.79, 7.79); Calibrated: 2017/11/2;
- Sensor-Surface: 1.4mm (Mechanical Surface Detection)
- Electronics: DAE4 Sn1459; Calibrated: 2017/9/15
- Phantom: SAM (30deg probe tilt) with CRP v5.0\_20150321; Type: QD000P40CD; Serial: TP:1874
- Measurement SW: DASY52, Version 52.8 (8);

**Area Scan (51x81x1):** Interpolated grid: dx=1.500 mm, dy=1.500 mm

Maximum value of SAR (interpolated) = 1.65 W/kg

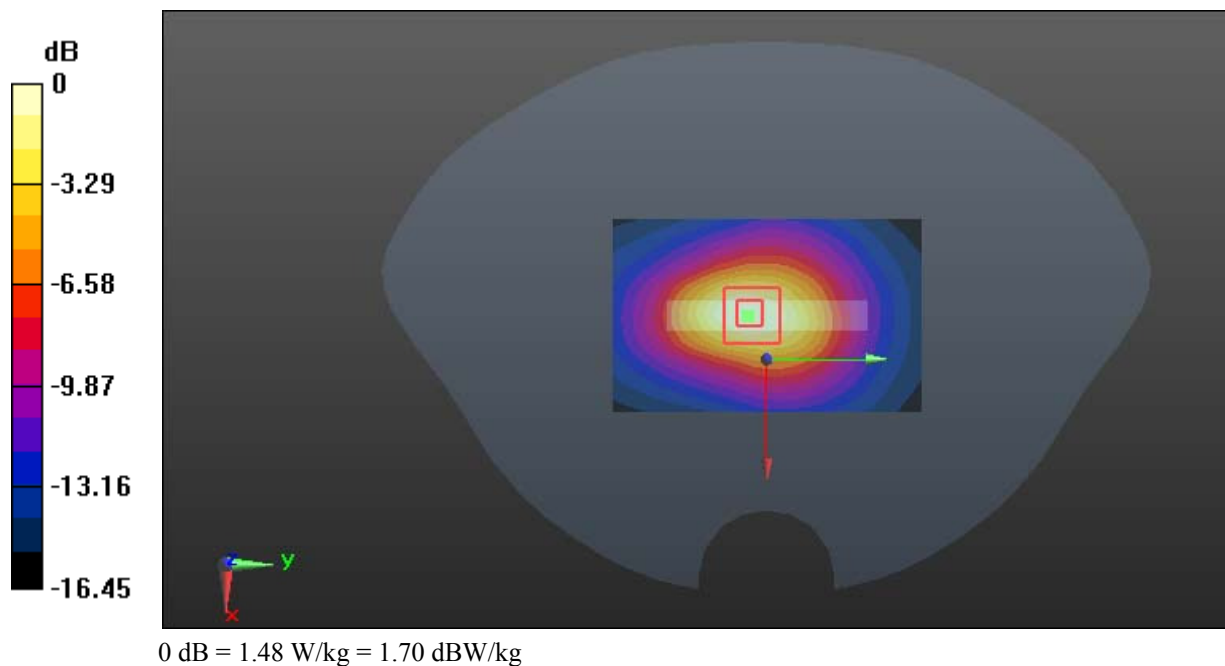
**Zoom Scan (5x5x7)/Cube 0:** Measurement grid: dx=8mm, dy=8mm, dz=5mm

Reference Value = 26.74 V/m; Power Drift = -0.11 dB

Peak SAR (extrapolated) = 1.76 W/kg

**SAR(1 g) = 1.01 W/kg; SAR(10 g) = 0.561 W/kg**

Maximum value of SAR (measured) = 1.48 W/kg



**Test Plot 32#: WCDMA Band 2\_Body Bottom\_Middle****DUT: Mobile Phone; Type: Ranger 5; Serial: 18030800320**

Communication System: WCDMA; Frequency: 1880 MHz; Duty Cycle: 1:1  
Medium parameters used:  $f = 1880$  MHz;  $\sigma = 1.494$  S/m;  $\epsilon_r = 54.185$ ;  $\rho = 1000$  kg/m<sup>3</sup> ;  
Phantom section: Flat Section

DASY5 Configuration:

- Probe: EX3DV4 - SN7441; ConvF(7.79, 7.79, 7.79); Calibrated: 2017/11/2;
- Sensor-Surface: 1.4mm (Mechanical Surface Detection)
- Electronics: DAE4 Sn1459; Calibrated: 2017/9/15
- Phantom: SAM (30deg probe tilt) with CRP v5.0\_20150321; Type: QD000P40CD; Serial: TP:1874
- Measurement SW: DASY52, Version 52.8 (8);

**Area Scan (51x81x1):** Interpolated grid: dx=1.500 mm, dy=1.500 mm

Maximum value of SAR (interpolated) = 1.62 W/kg

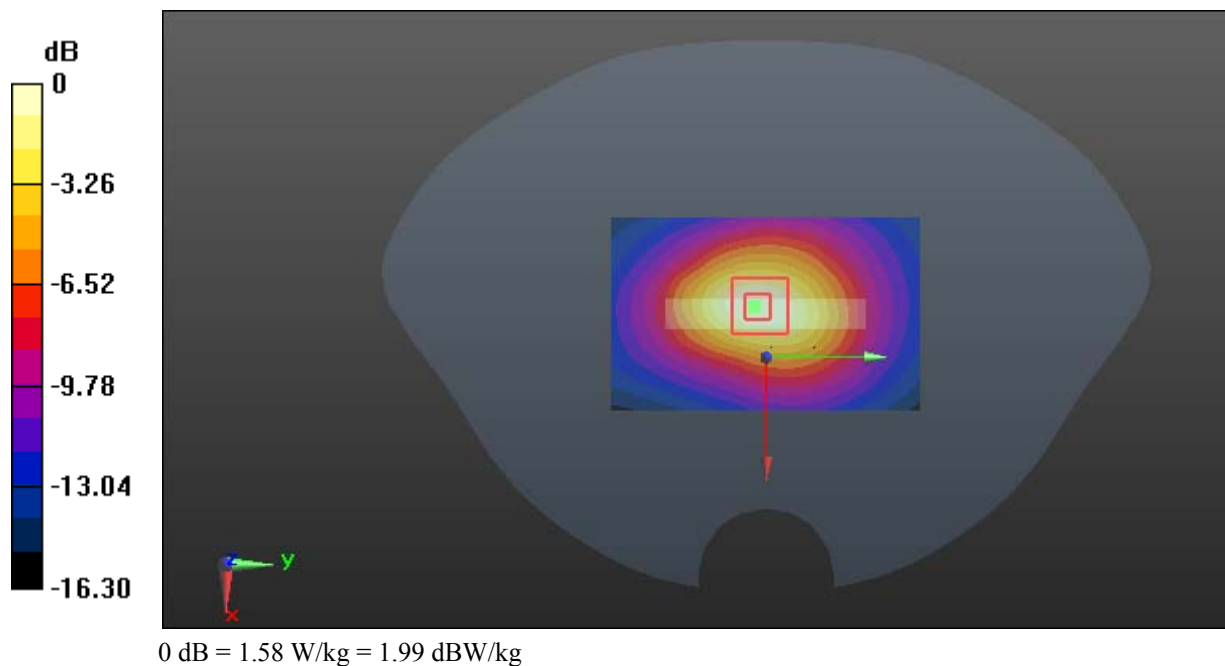
**Zoom Scan (5x6x7)/Cube 0:** Measurement grid: dx=8mm, dy=8mm, dz=5mm

Reference Value = 30.05 V/m; Power Drift = -0.06 dB

Peak SAR (extrapolated) = 1.87 W/kg

**SAR(1 g) = 1.07 W/kg; SAR(10 g) = 0.606 W/kg**

Maximum value of SAR (measured) = 1.58 W/kg





**Test Plot 33#: WCDMA Band 2\_Body Bottom\_High****DUT: Mobile Phone; Type: Ranger 5; Serial: 18030800320**

Communication System: WCDMA; Frequency: 1907.6 MHz; Duty Cycle: 1:1  
Medium parameters used:  $f = 1907.6$  MHz;  $\sigma = 1.518$  S/m;  $\epsilon_r = 54.091$ ;  $\rho = 1000$  kg/m<sup>3</sup> ;  
Phantom section: Flat Section

DASY5 Configuration:

- Probe: EX3DV4 - SN7441; ConvF(7.79, 7.79, 7.79); Calibrated: 2017/11/2;
- Sensor-Surface: 1.4mm (Mechanical Surface Detection)
- Electronics: DAE4 Sn1459; Calibrated: 2017/9/15
- Phantom: SAM (30deg probe tilt) with CRP v5.0\_20150321; Type: QD000P40CD; Serial: TP:1874
- Measurement SW: DASY52, Version 52.8 (8);

**Area Scan (51x81x1):** Interpolated grid: dx=1.500 mm, dy=1.500 mm

Maximum value of SAR (interpolated) = 1.84 W/kg

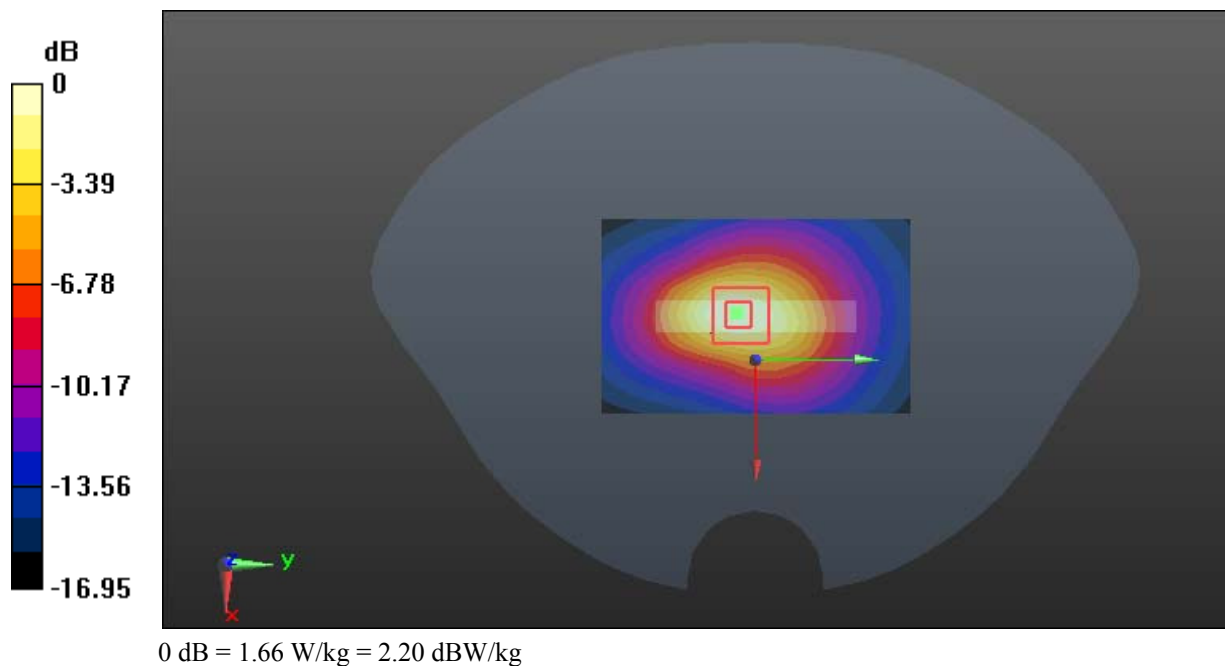
**Zoom Scan (5x5x7)/Cube 0:** Measurement grid: dx=8mm, dy=8mm, dz=5mm

Reference Value = 27.61 V/m; Power Drift = -0.05 dB

Peak SAR (extrapolated) = 1.98 W/kg

**SAR(1 g) = 1.12 W/kg; SAR(10 g) = 0.616 W/kg**

Maximum value of SAR (measured) = 1.66 W/kg



**Test Plot 34#: WCDMA Band 5\_Head Left Cheek\_Middle****DUT: Mobile Phone; Type: Ranger 5; Serial: 18030800320**

Communication System: WCDMA; Frequency: 836.6 MHz; Duty Cycle: 1:1  
Medium parameters used:  $f = 836.6$  MHz;  $\sigma = 0.883$  S/m;  $\epsilon_r = 42.117$ ;  $\rho = 1000$  kg/m<sup>3</sup> ;  
Phantom section: Left Section

DASY5 Configuration:

- Probe: EX3DV4 - SN7441; ConvF(9.98, 9.98, 9.98); Calibrated: 2017/11/2;
- Sensor-Surface: 1.4mm (Mechanical Surface Detection)
- Electronics: DAE4 Sn1459; Calibrated: 2017/9/15
- Phantom: SAM (30deg probe tilt) with CRP v5.0\_20150321; Type: QD000P40CD; Serial: TP:1874
- Measurement SW: DASY52, Version 52.8 (8);

**Area Scan (121x71x1):** Interpolated grid: dx=1.500 mm, dy=1.500 mm

Maximum value of SAR (interpolated) = 0.651 W/kg

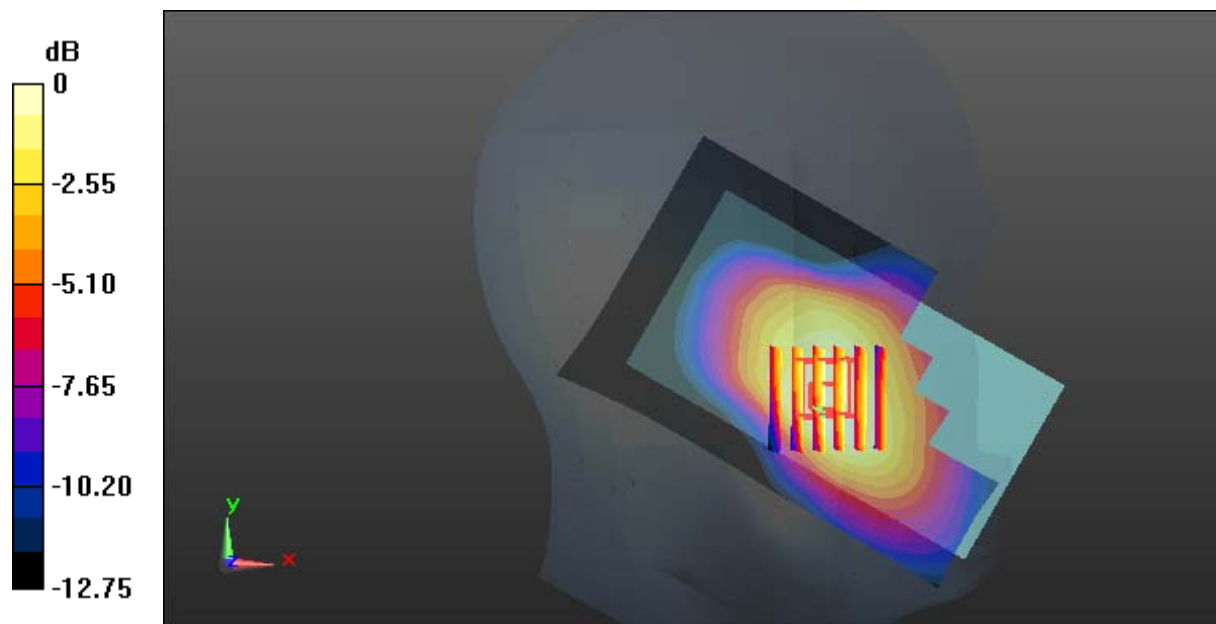
**Zoom Scan (6x6x7)/Cube 0:** Measurement grid: dx=8mm, dy=8mm, dz=5mm

Reference Value = 7.343 V/m; Power Drift = -0.11 dB

Peak SAR (extrapolated) = 0.633 W/kg

**SAR(1 g) = 0.471 W/kg; SAR(10 g) = 0.356 W/kg**

Maximum value of SAR (measured) = 0.567 W/kg



0 dB = 0.567 W/kg = -2.46 dBW/kg

**Test Plot 35#: WCDMA Band 5\_Head Left Tilt\_Middle**

**DUT: Mobile Phone; Type: Ranger 5; Serial: 18030800320**

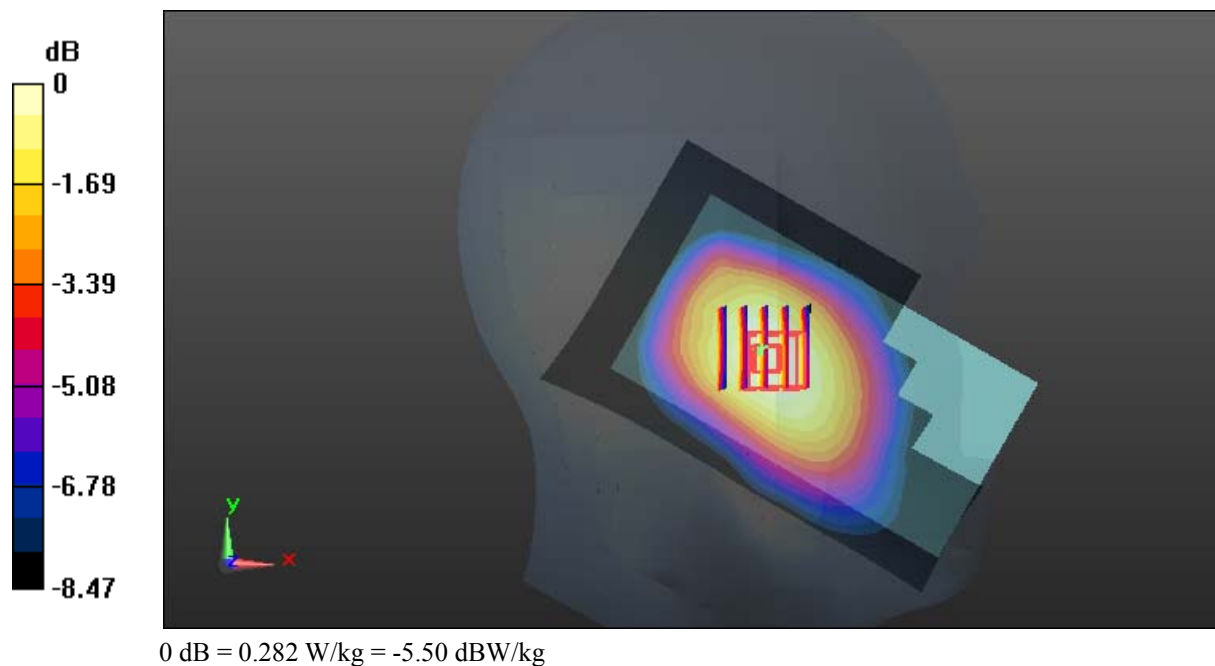
Communication System: WCDMA; Frequency: 836.6 MHz; Duty Cycle: 1:1  
 Medium parameters used:  $f = 836.6 \text{ MHz}$ ;  $\sigma = 0.883 \text{ S/m}$ ;  $\epsilon_r = 42.117$ ;  $\rho = 1000 \text{ kg/m}^3$  ;  
 Phantom section: Left Section

DASY5 Configuration:

- Probe: EX3DV4 - SN7441; ConvF(9.98, 9.98, 9.98); Calibrated: 2017/11/2;
- Sensor-Surface: 1.4mm (Mechanical Surface Detection)
- Electronics: DAE4 Sn1459; Calibrated: 2017/9/15
- Phantom: SAM (30deg probe tilt) with CRP v5.0\_20150321; Type: QD000P40CD; Serial: TP:1874
- Measurement SW: DASY52, Version 52.8 (8);

**Area Scan (121x71x1):** Interpolated grid:  $dx=1.500 \text{ mm}$ ,  $dy=1.500 \text{ mm}$   
 Maximum value of SAR (interpolated) = 0.284 W/kg

**Zoom Scan (5x5x7)/Cube 0:** Measurement grid:  $dx=8\text{mm}$ ,  $dy=8\text{mm}$ ,  $dz=5\text{mm}$   
 Reference Value = 10.25 V/m; Power Drift = -0.17 dB  
 Peak SAR (extrapolated) = 0.304 W/kg  
**SAR(1 g) = 0.237 W/kg; SAR(10 g) = 0.183 W/kg**  
 Maximum value of SAR (measured) = 0.282 W/kg



**Test Plot 36#: WCDMA Band 5\_Head Right Cheek\_Middle****DUT: Mobile Phone; Type: Ranger 5; Serial: 18030800320**

Communication System: WCDMA; Frequency: 836.6 MHz; Duty Cycle: 1:1  
Medium parameters used:  $f = 836.6$  MHz;  $\sigma = 0.883$  S/m;  $\epsilon_r = 42.117$ ;  $\rho = 1000$  kg/m<sup>3</sup> ;  
Phantom section: Right Section

DASY5 Configuration:

- Probe: EX3DV4 - SN7441; ConvF(9.98, 9.98, 9.98); Calibrated: 2017/11/2;
- Sensor-Surface: 1.4mm (Mechanical Surface Detection)
- Electronics: DAE4 Sn1459; Calibrated: 2017/9/15
- Phantom: SAM (30deg probe tilt) with CRP v5.0\_20150321; Type: QD000P40CD; Serial: TP:1874
- Measurement SW: DASY52, Version 52.8 (8);

**Area Scan (121x71x1):** Interpolated grid: dx=1.500 mm, dy=1.500 mm

Maximum value of SAR (interpolated) = 0.487 W/kg

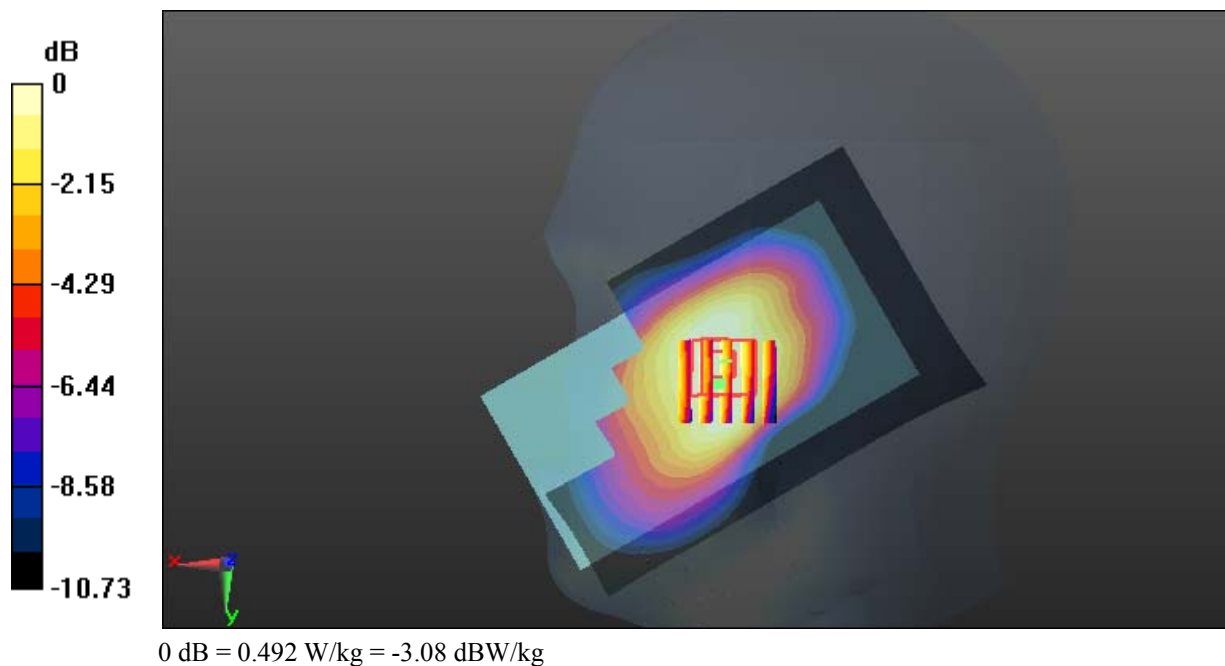
**Zoom Scan (5x5x7)/Cube 0:** Measurement grid: dx=8mm, dy=8mm, dz=5mm

Reference Value = 7.878 V/m; Power Drift = -0.14 dB

Peak SAR (extrapolated) = 0.520 W/kg

**SAR(1 g) = 0.428 W/kg; SAR(10 g) = 0.333 W/kg**

Maximum value of SAR (measured) = 0.492 W/kg



**Test Plot 37#: WCDMA Band 5\_Head Right Tilt\_Middle****DUT: Mobile Phone; Type: Ranger 5; Serial: 18030800320**

Communication System: WCDMA; Frequency: 836.6 MHz; Duty Cycle: 1:1  
Medium parameters used:  $f = 836.6$  MHz;  $\sigma = 0.883$  S/m;  $\epsilon_r = 42.117$ ;  $\rho = 1000$  kg/m<sup>3</sup> ;  
Phantom section: Right Section

DASY5 Configuration:

- Probe: EX3DV4 - SN7441; ConvF(9.98, 9.98, 9.98); Calibrated: 2017/11/2;
- Sensor-Surface: 1.4mm (Mechanical Surface Detection)
- Electronics: DAE4 Sn1459; Calibrated: 2017/9/15
- Phantom: SAM (30deg probe tilt) with CRP v5.0\_20150321; Type: QD000P40CD; Serial: TP:1874
- Measurement SW: DASY52, Version 52.8 (8);

**Area Scan (121x71x1):** Interpolated grid: dx=1.500 mm, dy=1.500 mm

Maximum value of SAR (interpolated) = 0.290 W/kg

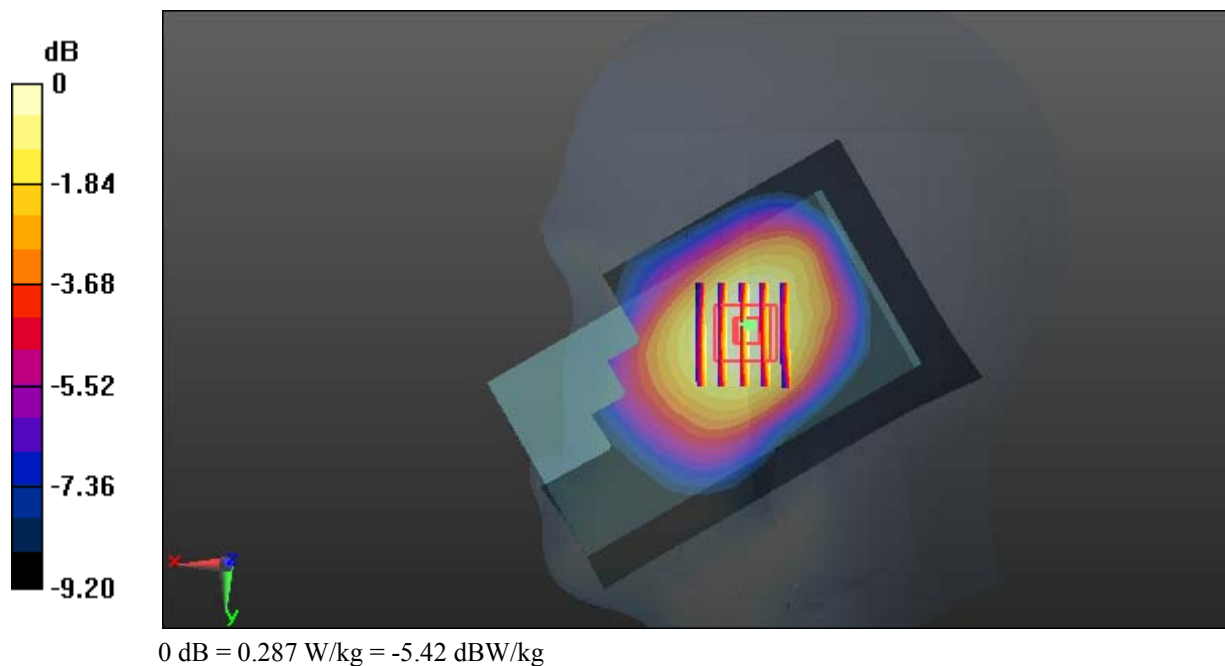
**Zoom Scan (5x6x7)/Cube 0:** Measurement grid: dx=8mm, dy=8mm, dz=5mm

Reference Value = 9.892 V/m; Power Drift = 0.01 dB

Peak SAR (extrapolated) = 0.307 W/kg

**SAR(1 g) = 0.248 W/kg; SAR(10 g) = 0.191 W/kg**

Maximum value of SAR (measured) = 0.287 W/kg



**Test Plot 38#: WCDMA Band 5\_Body Back\_Middle****DUT: Mobile Phone; Type: Ranger 5; Serial: 18030800320**

Communication System: WCDMA; Frequency: 836.6 MHz; Duty Cycle: 1:1  
Medium parameters used:  $f = 836.6$  MHz;  $\sigma = 0.958$  S/m;  $\epsilon_r = 56.879$ ;  $\rho = 1000$  kg/m<sup>3</sup> ;  
Phantom section: Flat Section

DASY5 Configuration:

- Probe: EX3DV4 - SN7441; ConvF(9.95, 9.95, 9.95); Calibrated: 2017/11/2;
- Sensor-Surface: 1.4mm (Mechanical Surface Detection)
- Electronics: DAE4 Sn1459; Calibrated: 2017/9/15
- Phantom: SAM (30deg probe tilt) with CRP v5.0\_20150321; Type: QD000P40CD; Serial: TP:1874
- Measurement SW: DASY52, Version 52.8 (8);

**Area Scan (71x121x1):** Interpolated grid: dx=1.500 mm, dy=1.500 mm

Maximum value of SAR (interpolated) = 0.865 W/kg

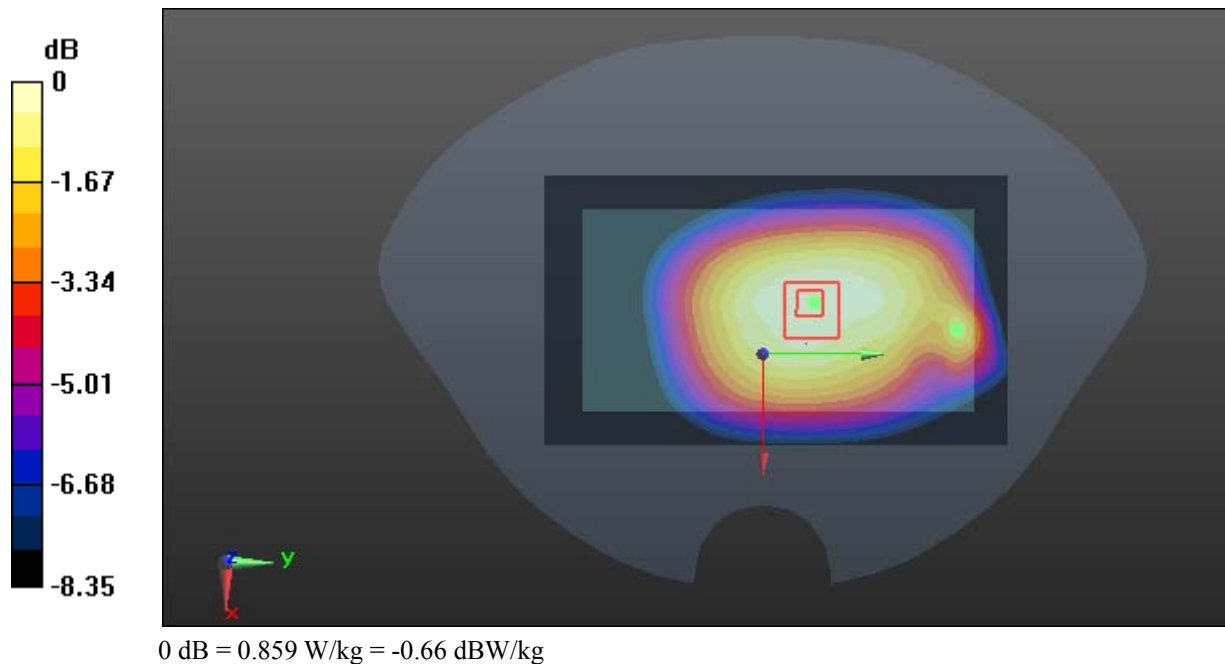
**Zoom Scan (5x5x7)/Cube 0:** Measurement grid: dx=8mm, dy=8mm, dz=5mm

Reference Value = 26.35 V/m; Power Drift = 0.04 dB

Peak SAR (extrapolated) = 0.945 W/kg

**SAR(1 g) = 0.713 W/kg; SAR(10 g) = 0.549 W/kg**

Maximum value of SAR (measured) = 0.859 W/kg



**Test Plot 39#: WCDMA Band 5\_Body Right\_Middle****DUT: Mobile Phone; Type: Ranger 5; Serial: 18030800320**

Communication System: WCDMA; Frequency: 836.6 MHz; Duty Cycle: 1:1  
Medium parameters used:  $f = 836.6$  MHz;  $\sigma = 0.958$  S/m;  $\epsilon_r = 56.879$ ;  $\rho = 1000$  kg/m<sup>3</sup> ;  
Phantom section: Flat Section

DASY5 Configuration:

- Probe: EX3DV4 - SN7441; ConvF(9.95, 9.95, 9.95); Calibrated: 2017/11/2;
- Sensor-Surface: 1.4mm (Mechanical Surface Detection)
- Electronics: DAE4 Sn1459; Calibrated: 2017/9/15
- Phantom: SAM (30deg probe tilt) with CRP v5.0\_20150321; Type: QD000P40CD; Serial: TP:1874
- Measurement SW: DASY52, Version 52.8 (8);

**Area Scan (51x121x1):** Interpolated grid: dx=1.500 mm, dy=1.500 mm

Maximum value of SAR (interpolated) = 0.318 W/kg

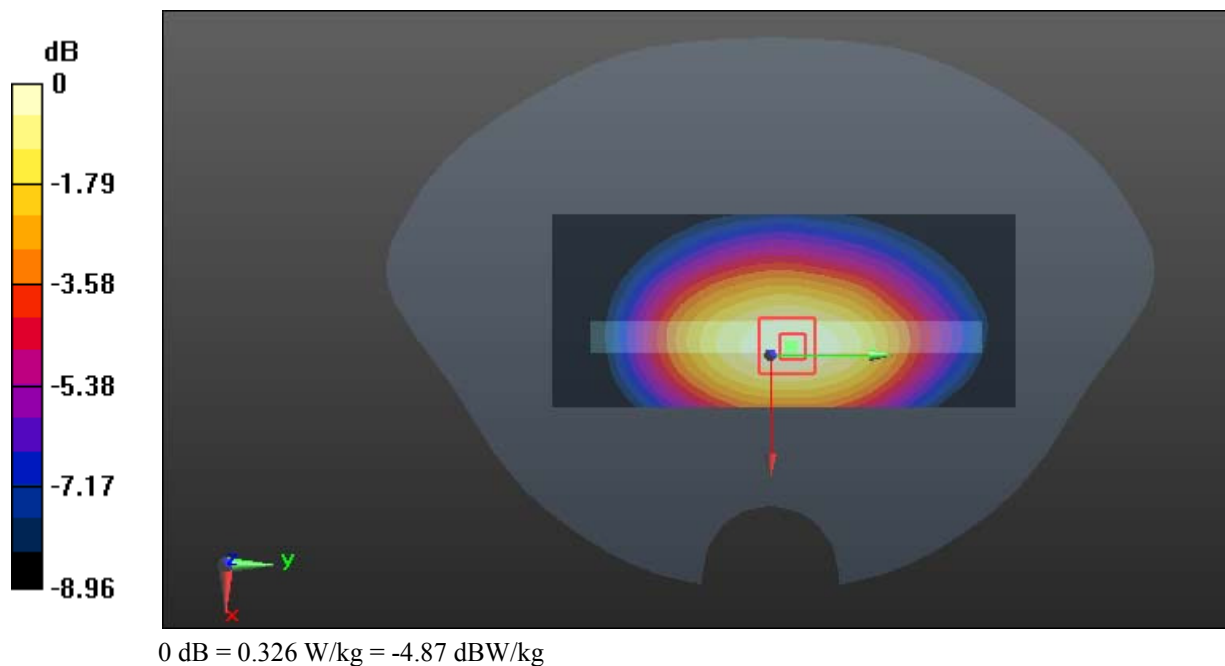
**Zoom Scan (5x6x7)/Cube 0:** Measurement grid: dx=8mm, dy=8mm, dz=5mm

Reference Value = 15.15 V/m; Power Drift = -0.10 dB

Peak SAR (extrapolated) = 0.369 W/kg

**SAR(1 g) = 0.251 W/kg; SAR(10 g) = 0.179 W/kg**

Maximum value of SAR (measured) = 0.326 W/kg



**Test Plot 40#: WCDMA Band 5\_Body Bottom\_Middle****DUT: Mobile Phone; Type: Ranger 5; Serial: 18030800320**

Communication System: WCDMA; Frequency: 836.6 MHz; Duty Cycle: 1:1  
Medium parameters used:  $f = 836.6$  MHz;  $\sigma = 0.958$  S/m;  $\epsilon_r = 56.879$ ;  $\rho = 1000$  kg/m<sup>3</sup> ;  
Phantom section: Flat Section

DASY5 Configuration:

- Probe: EX3DV4 - SN7441; ConvF(9.95, 9.95, 9.95); Calibrated: 2017/11/2;
- Sensor-Surface: 1.4mm (Mechanical Surface Detection)
- Electronics: DAE4 Sn1459; Calibrated: 2017/9/15
- Phantom: SAM (30deg probe tilt) with CRP v5.0\_20150321; Type: QD000P40CD; Serial: TP:1874
- Measurement SW: DASY52, Version 52.8 (8);

**Area Scan (51x81x1):** Interpolated grid: dx=1.500 mm, dy=1.500 mm

Maximum value of SAR (interpolated) = 0.140 W/kg

**Zoom Scan (6x7x7)/Cube 0:** Measurement grid: dx=8mm, dy=8mm, dz=5mm

Reference Value = 9.903 V/m; Power Drift = -0.08 dB

Peak SAR (extrapolated) = 0.160 W/kg

**SAR(1 g) = 0.105 W/kg; SAR(10 g) = 0.073 W/kg**

Maximum value of SAR (measured) = 0.135 W/kg

