

Test Plot 1#: GSM 850_Head Left Cheek_Middle

DUT: Mobile Phone; Type: Nitro 4s; Serial: 17031000220;

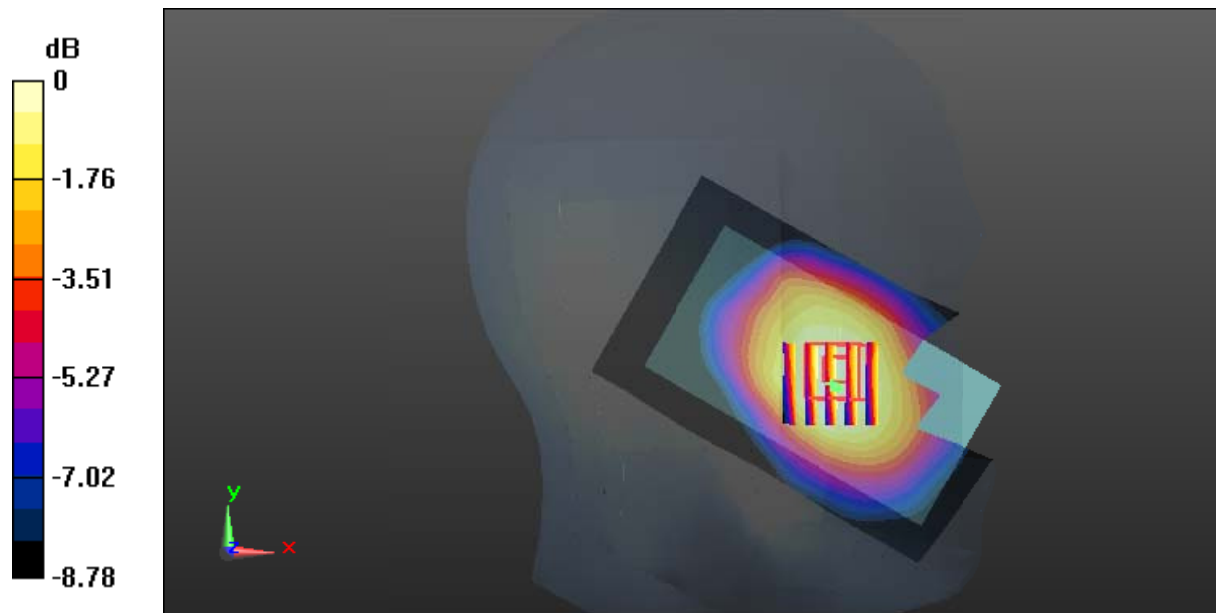
Communication System: Generic GSM; Frequency: 836.6 MHz; Duty Cycle: 1:8
 Medium parameters used: 836.6 MHz; $\sigma = 0.896$ S/m; $\epsilon_r = 40.862$; $\rho = 1000$ kg/m³ ;
 Phantom section: Left Section

DASY5 Configuration:

- Probe: EX3DV4 - SN7441; ConvF(10.22, 10.22, 10.22); Calibrated: 2016/11/15;
- Sensor-Surface: 1.4mm (Mechanical Surface Detection)
- Electronics: DAE3 Sn379; Calibrated: 2016/10/4
- Phantom: SAM1; Type: QD000P40CC; Serial: TP:1412
- Measurement SW: DASY52, Version 52.8 (8);

Area Scan (61x101x1): Interpolated grid: dx=1.500 mm, dy=1.500 mm
 Maximum value of SAR (interpolated) = 0.595 W/kg

Zoom Scan (5x5x7)/Cube 0: Measurement grid: dx=8mm, dy=8mm, dz=5mm
 Reference Value = 7.544 V/m; Power Drift = -0.02 dB
 Peak SAR (extrapolated) = 0.642 W/kg
SAR(1 g) = 0.504 W/kg; SAR(10 g) = 0.390 W/kg
 Maximum value of SAR (measured) = 0.581 W/kg



0 dB = 0.581 W/kg = -2.36 dBW/kg

Test Plot 2#: GSM 850_Head Left Tilt_Middle

DUT: Mobile Phone; Type: Nitro 4s; Serial: 17031000220;

Communication System: Generic GSM; Frequency: 836.6 MHz; Duty Cycle: 1:8
 Medium parameters used: 836.6 MHz; $\sigma = 0.896$ S/m; $\epsilon_r = 40.862$; $\rho = 1000$ kg/m³ ;
 Phantom section: Left Section

DASY5 Configuration:

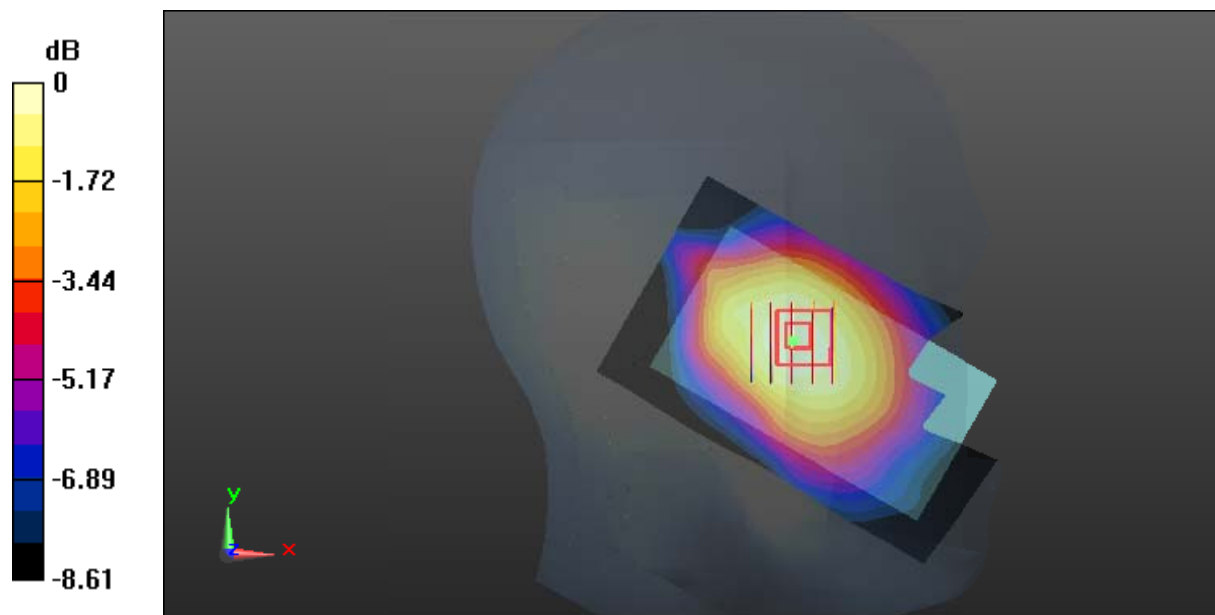
- Probe: EX3DV4 - SN7441; ConvF(10.22, 10.22, 10.22); Calibrated: 2016/11/15;
- Sensor-Surface: 1.4mm (Mechanical Surface Detection)
- Electronics: DAE3 Sn379; Calibrated: 2016/10/4
- Phantom: SAM1; Type: QD000P40CC; Serial: TP:1412
- Measurement SW: DASY52, Version 52.8 (8);

Area Scan (61x101x1): Interpolated grid: dx=1.500 mm, dy=1.500 mm
 Maximum value of SAR (interpolated) = 0.277 W/kg

Zoom Scan (5x5x7)/Cube 0: Measurement grid: dx=8mm, dy=8mm, dz=5mm
 Reference Value = 10.21 V/m; Power Drift = -0.07 dB
 Peak SAR (extrapolated) = 0.297 W/kg

SAR(1 g) = 0.236 W/kg; SAR(10 g) = 0.182 W/kg

Maximum value of SAR (measured) = 0.280 W/kg



0 dB = 0.280 W/kg = -5.53 dBW/kg

Test Plot 3#: GSM 850_Head Right Cheek_Middle

DUT: Mobile Phone; Type: Nitro 4s; Serial: 17031000220;

Communication System: Generic GSM; Frequency: 836.6 MHz; Duty Cycle: 1:8
 Medium parameters used: 836.6 MHz; $\sigma = 0.896$ S/m; $\epsilon_r = 40.862$; $\rho = 1000$ kg/m³ ;
 Phantom section: Right Section

DASY5 Configuration:

- Probe: EX3DV4 - SN7441; ConvF(10.22, 10.22, 10.22); Calibrated: 2016/11/15;
- Sensor-Surface: 1.4mm (Mechanical Surface Detection)
- Electronics: DAE3 Sn379; Calibrated: 2016/10/4
- Phantom: SAM1; Type: QD000P40CC; Serial: TP:1412
- Measurement SW: DASY52, Version 52.8 (8);

Area Scan (61x101x1): Interpolated grid: dx=1.500 mm, dy=1.500 mm

Maximum value of SAR (interpolated) = 0.620 W/kg

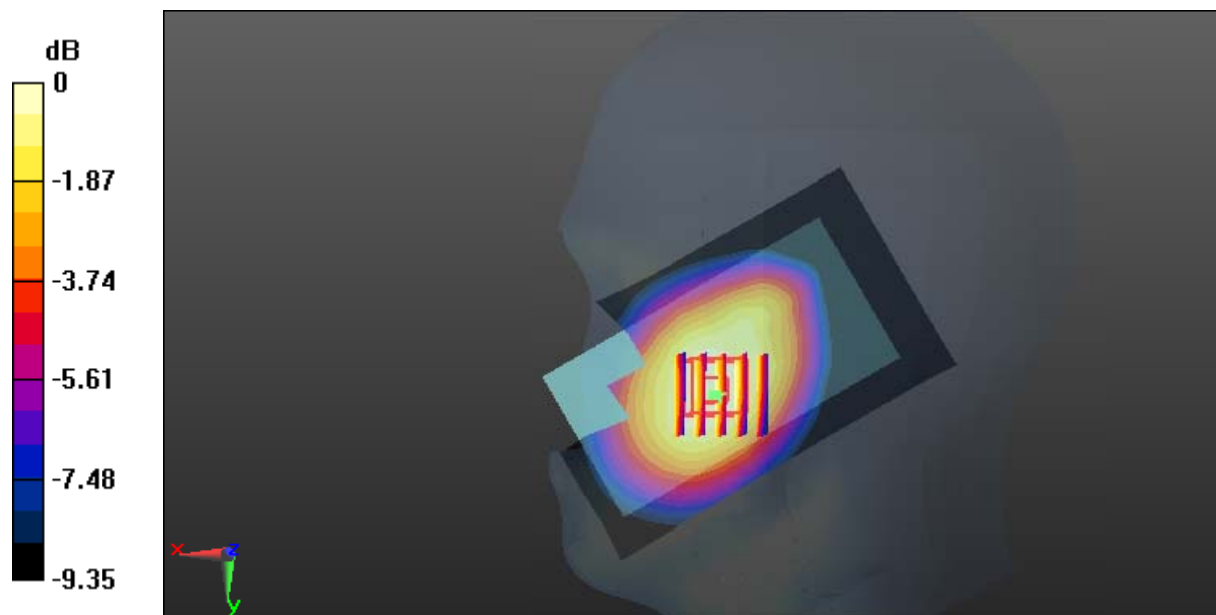
Zoom Scan (5x5x7)/Cube 0: Measurement grid: dx=8mm, dy=8mm, dz=5mm

Reference Value = 5.050 V/m; Power Drift = -0.16 dB

Peak SAR (extrapolated) = 0.637 W/kg

SAR(1 g) = 0.528 W/kg; SAR(10 g) = 0.407 W/kg

Maximum value of SAR (measured) = 0.604 W/kg



0 dB = 0.604 W/kg = -2.19 dBW/kg

Test Plot 4#: GSM 850_Head Right Tilt_Middle

DUT: Mobile Phone; Type: Nitro 4s; Serial: 17031000220;

Communication System: Generic GSM; Frequency: 836.6 MHz; Duty Cycle: 1:8
 Medium parameters used: 836.6 MHz; $\sigma = 0.896$ S/m; $\epsilon_r = 40.862$; $\rho = 1000$ kg/m³ ;
 Phantom section: Right Section

DASY5 Configuration:

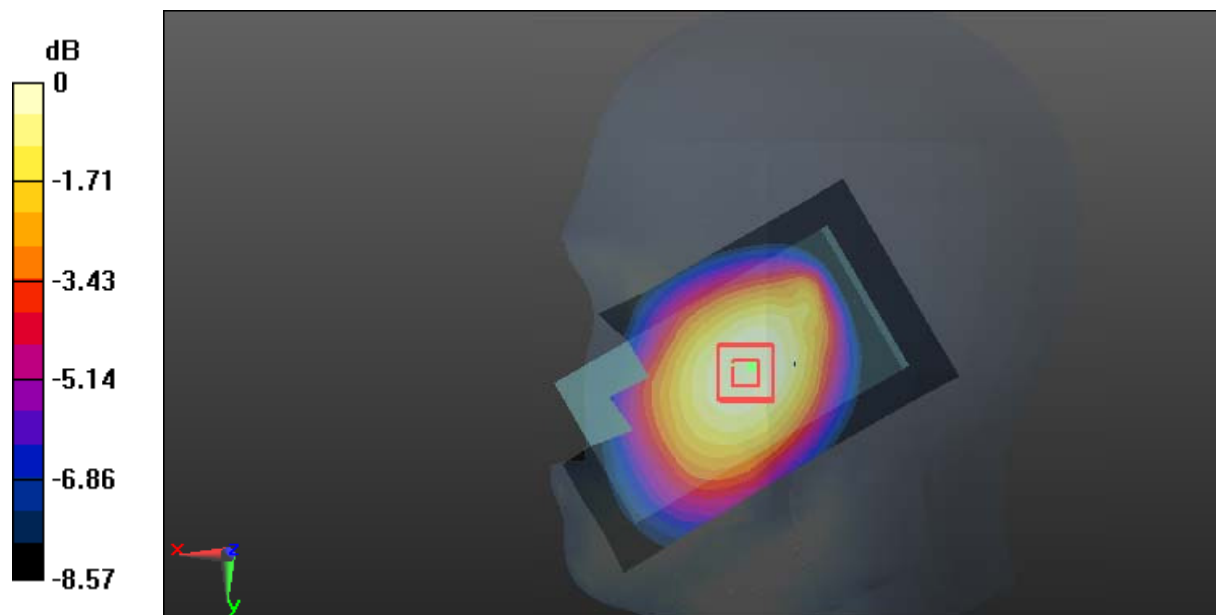
- Probe: EX3DV4 - SN7441; ConvF(10.22, 10.22, 10.22); Calibrated: 2016/11/15;
- Sensor-Surface: 1.4mm (Mechanical Surface Detection)
- Electronics: DAE3 Sn379; Calibrated: 2016/10/4
- Phantom: SAM1; Type: QD000P40CC; Serial: TP:1412
- Measurement SW: DASY52, Version 52.8 (8);

Area Scan (61x101x1): Interpolated grid: dx=1.500 mm, dy=1.500 mm
 Maximum value of SAR (interpolated) = 0.330 W/kg

Zoom Scan (5x5x7)/Cube 0: Measurement grid: dx=8mm, dy=8mm, dz=5mm
 Reference Value = 6.430 V/m; Power Drift = -0.06 dB
 Peak SAR (extrapolated) = 0.341 W/kg

SAR(1 g) = 0.283 W/kg; SAR(10 g) = 0.219 W/kg

Maximum value of SAR (measured) = 0.321 W/kg



0 dB = 0.321 W/kg = -4.93 dBW/kg

Test Plot 5#: GSM 850_Body Worn Back_Middle

DUT: Mobile Phone; Type: Nitro 4s; Serial: 17031000220;

Communication System: Generic GSM; Frequency: 836.6 MHz; Duty Cycle: 1:8
 Medium parameters used: 836.6 MHz; $\sigma = 0.973$ S/m; $\epsilon_r = 55.341$; $\rho = 1000$ kg/m³ ;
 Phantom section: Right Section

DASY5 Configuration:

- Probe: EX3DV4 - SN7441; ConvF(9.85, 9.85, 9.85); Calibrated: 2016/11/15;
- Sensor-Surface: 1.4mm (Mechanical Surface Detection)
- Electronics: DAE3 Sn379; Calibrated: 2016/10/4
- Phantom: Triple Flat Phantom 5.1C; Type: QD 000 P51 CA; Serial: 1130
- Measurement SW: DASY52, Version 52.8 (8);

Area Scan (101x61x1): Interpolated grid: dx=1.500 mm, dy=1.500 mm

Maximum value of SAR (interpolated) = 0.907 W/kg

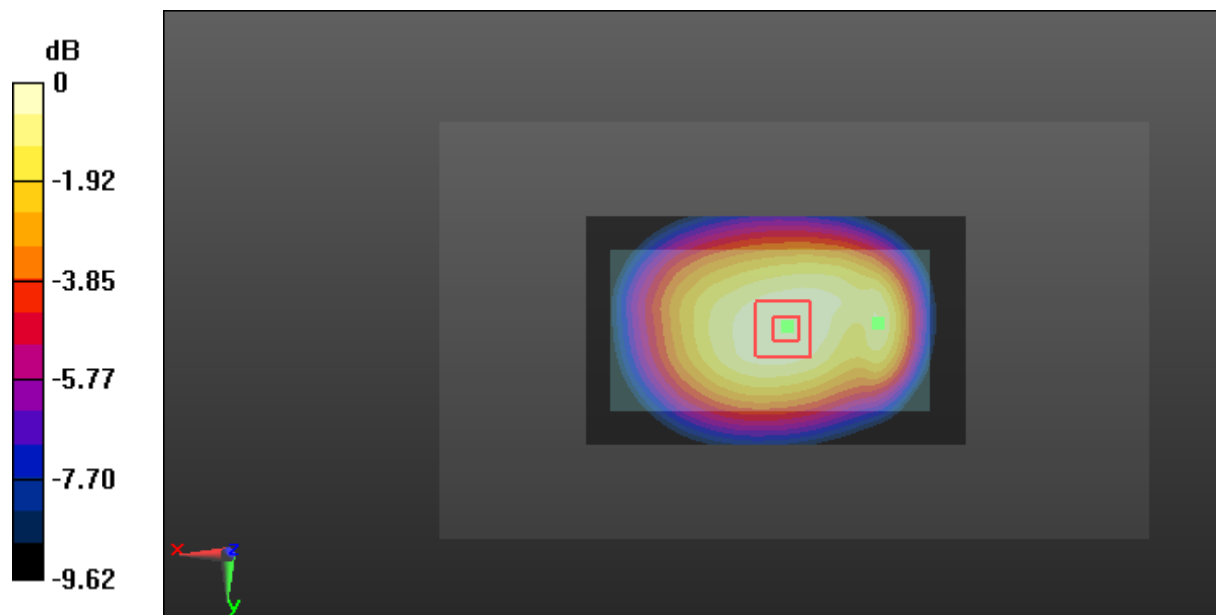
Zoom Scan (5x5x7)/Cube 0: Measurement grid: dx=8mm, dy=8mm, dz=5mm

Reference Value = 28.66 V/m; Power Drift = -0.04 dB

Peak SAR (extrapolated) = 0.983 W/kg

SAR(1 g) = 0.742 W/kg; SAR(10 g) = 0.549 W/kg

Maximum value of SAR (measured) = 0.903 W/kg



0 dB = 0.903 W/kg = -0.44 dBW/kg

Test Plot 6#: GSM 850_Body Back_Middle

DUT: Mobile Phone; Type: Nitro 4s; Serial: 17031000220;

Communication System: Generic GPRS-2 slots; Frequency: 836.6 MHz; Duty Cycle: 1:4
 Medium parameters used: 836.6 MHz; $\sigma = 0.973$ S/m; $\epsilon_r = 55.341$; $\rho = 1000$ kg/m³ ;
 Phantom section: Right Section

DASY5 Configuration:

- Probe: EX3DV4 - SN7441; ConvF(9.85, 9.85, 9.85); Calibrated: 2016/11/15;
- Sensor-Surface: 1.4mm (Mechanical Surface Detection)
- Electronics: DAE3 Sn379; Calibrated: 2016/10/4
- Phantom: Triple Flat Phantom 5.1C; Type: QD 000 P51 CA; Serial: 1130
- Measurement SW: DASY52, Version 52.8 (8);

Area Scan (101x61x1): Interpolated grid: dx=1.500 mm, dy=1.500 mm

Maximum value of SAR (interpolated) = 0.916 W/kg

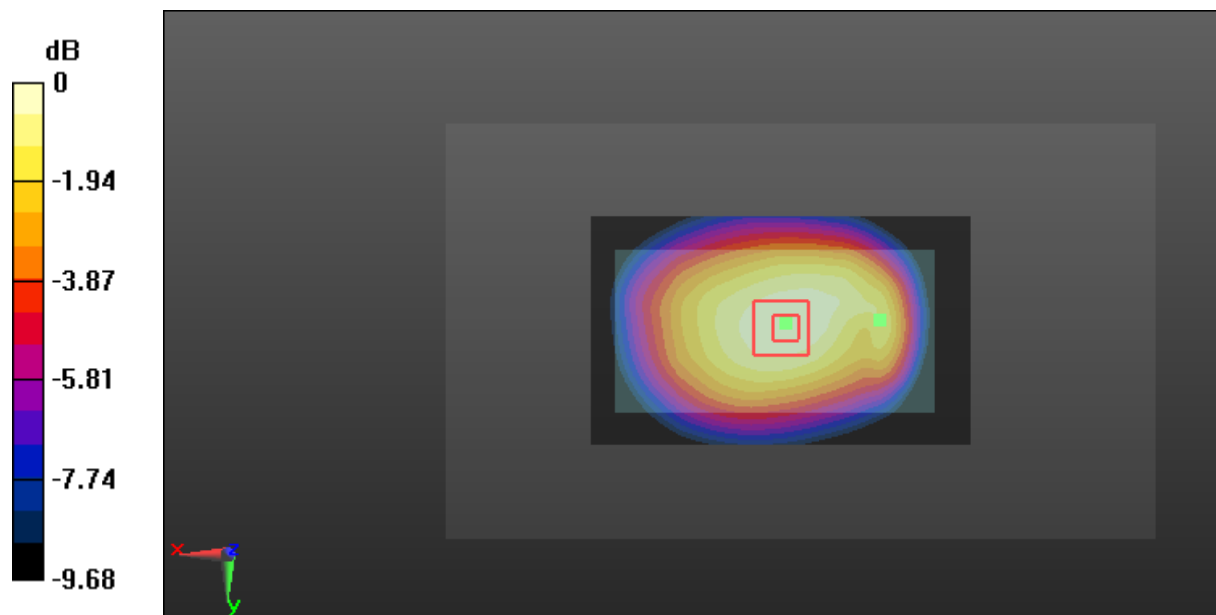
Zoom Scan (5x5x7)/Cube 0: Measurement grid: dx=8mm, dy=8mm, dz=5mm

Reference Value = 28.75 V/m; Power Drift = -0.04 dB

Peak SAR (extrapolated) = 1.02 W/kg

SAR(1 g) = 0.758 W/kg; SAR(10 g) = 0.561 W/kg

Maximum value of SAR (measured) = 0.933 W/kg



0 dB = 0.933 W/kg = -0.30 dBW/kg

Test Plot 7#: GSM 850_Body Left_Middle

DUT: Mobile Phone; Type: Nitro 4s; Serial: 17031000220;

Communication System: Generic GPRS-2 slots; Frequency: 836.6 MHz; Duty Cycle: 1:4
 Medium parameters used: 836.6 MHz; $\sigma = 0.973$ S/m; $\epsilon_r = 55.341$; $\rho = 1000$ kg/m³ ;
 Phantom section: Right Section

DASY5 Configuration:

- Probe: EX3DV4 - SN7441; ConvF(9.85, 9.85, 9.85); Calibrated: 2016/11/15;
- Sensor-Surface: 1.4mm (Mechanical Surface Detection)
- Electronics: DAE3 Sn379; Calibrated: 2016/10/4
- Phantom: Triple Flat Phantom 5.1C; Type: QD 000 P51 CA; Serial: 1130
- Measurement SW: DASY52, Version 52.8 (8);

Area Scan (101x51x1): Interpolated grid: dx=1.500 mm, dy=1.500 mm

Maximum value of SAR (interpolated) = 0.575 W/kg

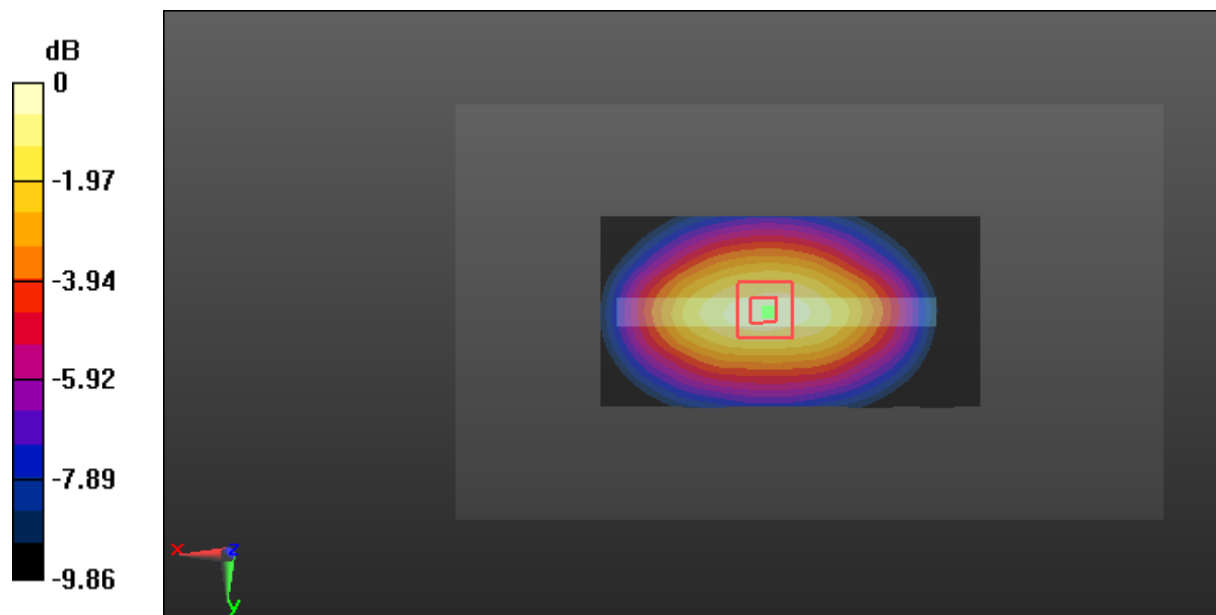
Zoom Scan (5x5x7)/Cube 0: Measurement grid: dx=8mm, dy=8mm, dz=5mm

Reference Value = 20.59 V/m; Power Drift = 0.25 dB

Peak SAR (extrapolated) = 0.668 W/kg

SAR(1 g) = 0.459 W/kg; SAR(10 g) = 0.315 W/kg

Maximum value of SAR (measured) = 0.604 W/kg



0 dB = 0.604 W/kg = -2.19 dBW/kg

Test Plot 8#: GSM 850_Body Right_Middle

DUT: Mobile Phone; Type: Nitro 4s; Serial: 17031000220;

Communication System: Generic GPRS-2 slots; Frequency: 836.6 MHz; Duty Cycle: 1:4
 Medium parameters used: 836.6 MHz; $\sigma = 0.973$ S/m; $\epsilon_r = 55.341$; $\rho = 1000$ kg/m³ ;
 Phantom section: Right Section

DASY5 Configuration:

- Probe: EX3DV4 - SN7441; ConvF(9.85, 9.85, 9.85); Calibrated: 2016/11/15;
- Sensor-Surface: 1.4mm (Mechanical Surface Detection)
- Electronics: DAE3 Sn379; Calibrated: 2016/10/4
- Phantom: Triple Flat Phantom 5.1C; Type: QD 000 P51 CA; Serial: 1130
- Measurement SW: DASY52, Version 52.8 (8);

Area Scan (101x51x1): Interpolated grid: dx=1.500 mm, dy=1.500 mm

Maximum value of SAR (interpolated) = 0.573 W/kg

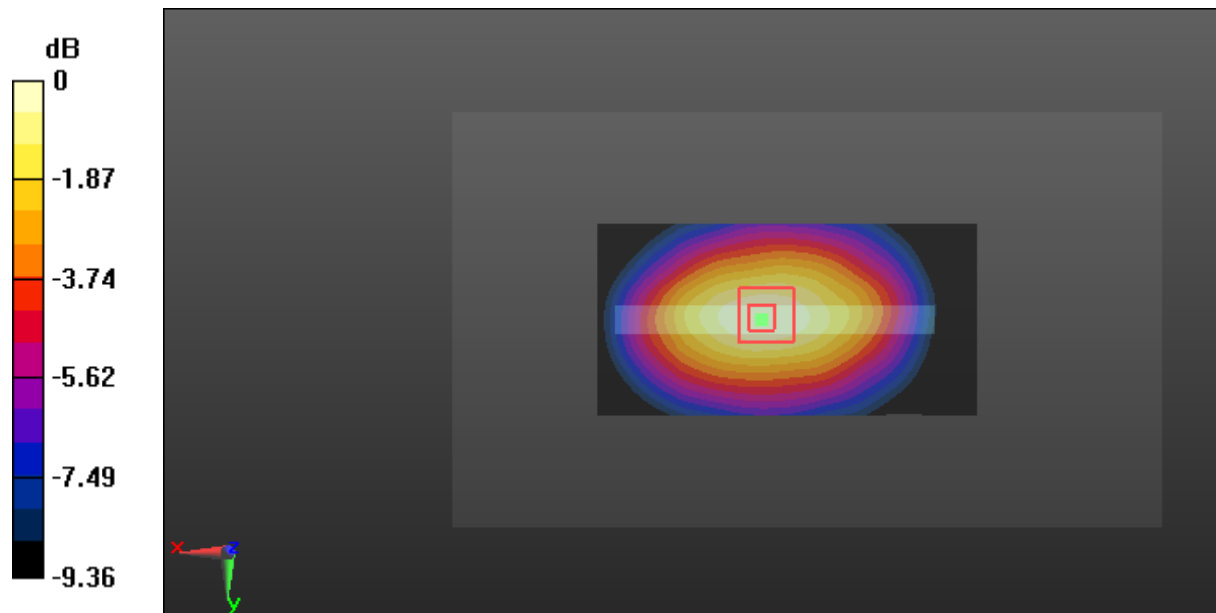
Zoom Scan (5x5x7)/Cube 0: Measurement grid: dx=8mm, dy=8mm, dz=5mm

Reference Value = 20.95 V/m; Power Drift = -0.16 dB

Peak SAR (extrapolated) = 0.632 W/kg

SAR(1 g) = 0.443 W/kg; SAR(10 g) = 0.310 W/kg

Maximum value of SAR (measured) = 0.574 W/kg



0 dB = 0.574 W/kg = -2.41 dBW/kg

Test Plot 9#: GSM 850_Body Bottom_Middle

DUT: Mobile Phone; Type: Nitro 4s; Serial: 17031000220;

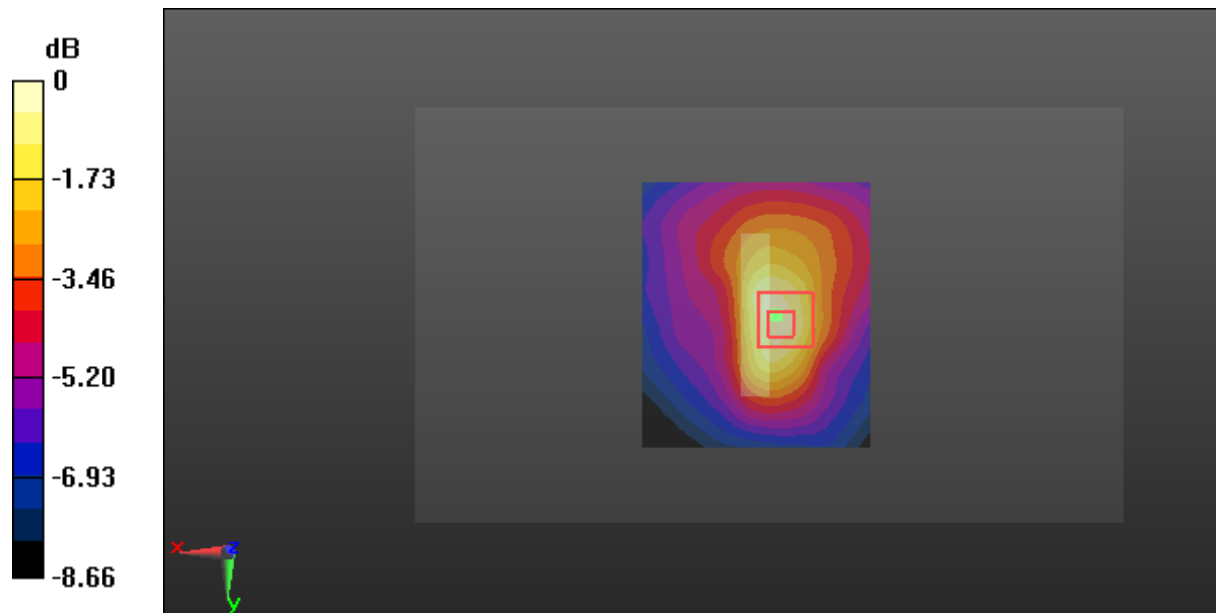
Communication System: Generic GPRS-2 slots; Frequency: 836.6 MHz; Duty Cycle: 1:4
 Medium parameters used: 836.6 MHz; $\sigma = 0.973$ S/m; $\epsilon_r = 55.341$; $\rho = 1000$ kg/m³ ;
 Phantom section: Right Section

DASY5 Configuration:

- Probe: EX3DV4 - SN7441; ConvF(9.85, 9.85, 9.85); Calibrated: 2016/11/15;
- Sensor-Surface: 1.4mm (Mechanical Surface Detection)
- Electronics: DAE3 Sn379; Calibrated: 2016/10/4
- Phantom: Triple Flat Phantom 5.1C; Type: QD 000 P51 CA; Serial: 1130
- Measurement SW: DASY52, Version 52.8 (8);

Area Scan (61x71x1): Interpolated grid: dx=1.500 mm, dy=1.500 mm
 Maximum value of SAR (interpolated) = 0.0711 W/kg

Zoom Scan (5x5x7)/Cube 0: Measurement grid: dx=8mm, dy=8mm, dz=5mm
 Reference Value = 6.953 V/m; Power Drift = 0.14 dB
 Peak SAR (extrapolated) = 0.0940 W/kg
SAR(1 g) = 0.048 W/kg; SAR(10 g) = 0.029 W/kg
 Maximum value of SAR (measured) = 0.0732 W/kg



0 dB = 0.0732 W/kg = -11.35 dBW/kg

Test Plot 10#: GSM 1900_Head Left Cheek_Middle

DUT: Mobile Phone; Type: Nitro 4s; Serial: 17031000220;

Communication System: Generic GSM; Frequency: 1880 MHz; Duty Cycle: 1:8
 Medium parameters used: 1880 MHz; $\sigma = 1.389 \text{ S/m}$; $\epsilon_r = 38.989$; $\rho = 1000 \text{ kg/m}^3$;
 Phantom section: Left Section

DASY5 Configuration:

- Probe: EX3DV4 - SN7441; ConvF(8.48, 8.48, 8.48); Calibrated: 2016/11/15;
- Sensor-Surface: 1.4mm (Mechanical Surface Detection)
- Electronics: DAE3 Sn379; Calibrated: 2016/10/4
- Phantom: SAM1; Type: QD000P40CC; Serial: TP:1412
- Measurement SW: DASY52, Version 52.8 (8);

Area Scan (61x101x1): Interpolated grid: dx=1.500 mm, dy=1.500 mm

Maximum value of SAR (interpolated) = 0.761 W/kg

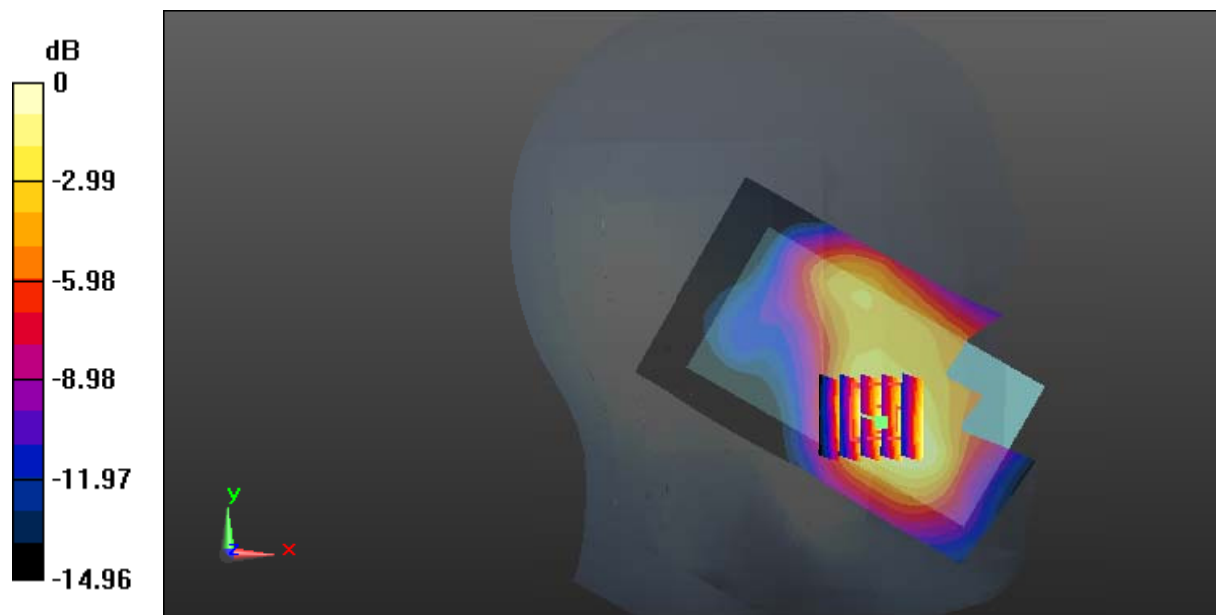
Zoom Scan (5x5x7)/Cube 0: Measurement grid: dx=8mm, dy=8mm, dz=5mm

Reference Value = 4.956 V/m; Power Drift = 0.01 dB

Peak SAR (extrapolated) = 0.841 W/kg

SAR(1 g) = 0.512 W/kg; SAR(10 g) = 0.316 W/kg

Maximum value of SAR (measured) = 0.704 W/kg



0 dB = 0.704 W/kg = -1.52 dBW/kg

Test Plot 11#: GSM 1900_Head Left Tilt_Middle

DUT: Mobile Phone; Type: Nitro 4s; Serial: 17031000220;

Communication System: Generic GSM; Frequency: 1880 MHz; Duty Cycle: 1:8
 Medium parameters used: 1880 MHz; $\sigma = 1.389 \text{ S/m}$; $\epsilon_r = 38.989$; $\rho = 1000 \text{ kg/m}^3$;
 Phantom section: Left Section

DASY5 Configuration:

- Probe: EX3DV4 - SN7441; ConvF(8.48, 8.48, 8.48); Calibrated: 2016/11/15;
- Sensor-Surface: 1.4mm (Mechanical Surface Detection)
- Electronics: DAE3 Sn379; Calibrated: 2016/10/4
- Phantom: SAM1; Type: QD000P40CC; Serial: TP:1412
- Measurement SW: DASY52, Version 52.8 (8);

Area Scan (61x101x1): Interpolated grid: dx=1.500 mm, dy=1.500 mm

Maximum value of SAR (interpolated) = 0.183 W/kg

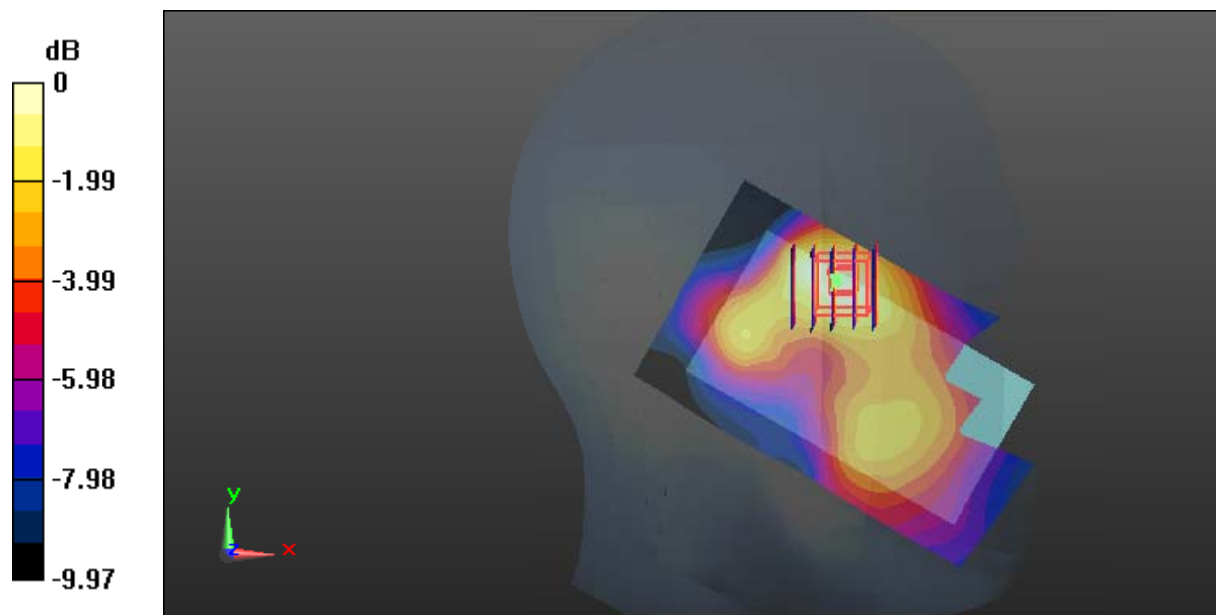
Zoom Scan (5x5x7)/Cube 0: Measurement grid: dx=8mm, dy=8mm, dz=5mm

Reference Value = 7.095 V/m; Power Drift = -0.14 dB

Peak SAR (extrapolated) = 0.196 W/kg

SAR(1 g) = 0.130 W/kg; SAR(10 g) = 0.084 W/kg

Maximum value of SAR (measured) = 0.171 W/kg



0 dB = 0.171 W/kg = -7.67 dBW/kg

Test Plot 12#: GSM 1900_Head Right Cheek_Middle

DUT: Mobile Phone; Type: Nitro 4s; Serial: 17031000220;

Communication System: Generic GSM; Frequency: 1880 MHz; Duty Cycle: 1:8
 Medium parameters used: 1880 MHz; $\sigma = 1.389 \text{ S/m}$; $\epsilon_r = 38.989$; $\rho = 1000 \text{ kg/m}^3$;
 Phantom section: Right Section

DASY5 Configuration:

- Probe: EX3DV4 - SN7441; ConvF(8.48, 8.48, 8.48); Calibrated: 2016/11/15;
- Sensor-Surface: 1.4mm (Mechanical Surface Detection)
- Electronics: DAE3 Sn379; Calibrated: 2016/10/4
- Phantom: SAM1; Type: QD000P40CC; Serial: TP:1412
- Measurement SW: DASY52, Version 52.8 (8);

Area Scan (61x101x1): Interpolated grid: dx=1.500 mm, dy=1.500 mm

Maximum value of SAR (interpolated) = 0.500 W/kg

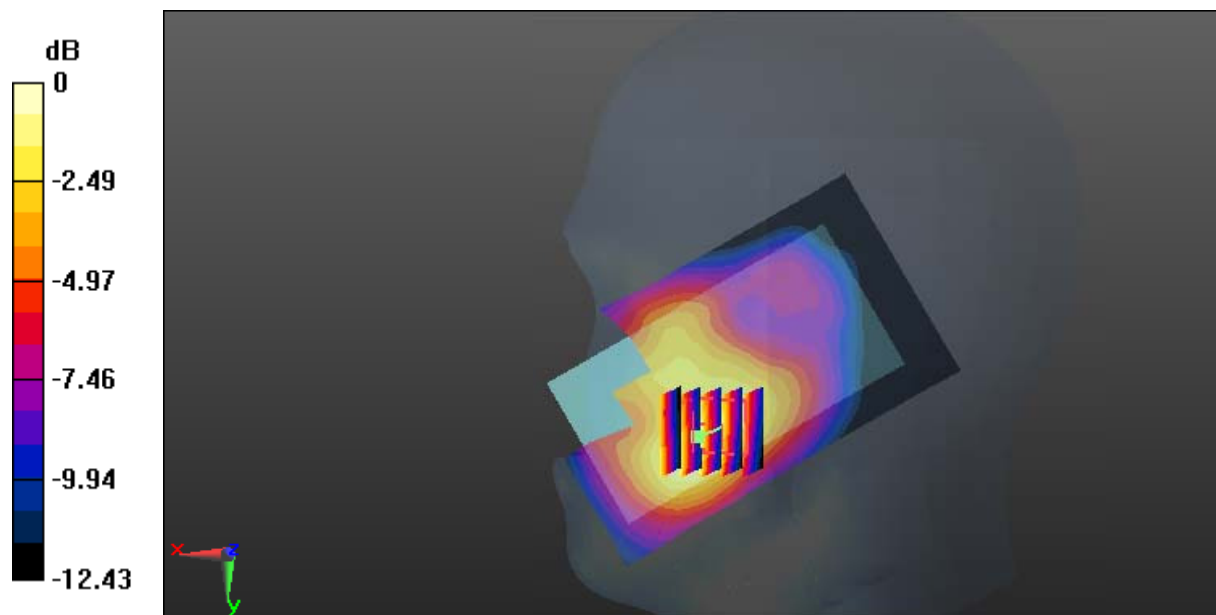
Zoom Scan (5x5x7)/Cube 0: Measurement grid: dx=8mm, dy=8mm, dz=5mm

Reference Value = 5.052 V/m; Power Drift = -0.03 dB

Peak SAR (extrapolated) = 0.601 W/kg

SAR(1 g) = 0.378 W/kg; SAR(10 g) = 0.234 W/kg

Maximum value of SAR (measured) = 0.502 W/kg



0 dB = 0.502 W/kg = -2.99 dBW/kg

Test Plot 13#: GSM 1900_Head Right Tilt_Middle

DUT: Mobile Phone; Type: Nitro 4s; Serial: 17031000220;

Communication System: Generic GSM; Frequency: 1880 MHz; Duty Cycle: 1:8
 Medium parameters used: 1880 MHz; $\sigma = 1.389 \text{ S/m}$; $\epsilon_r = 38.989$; $\rho = 1000 \text{ kg/m}^3$;
 Phantom section: Right Section

DASY5 Configuration:

- Probe: EX3DV4 - SN7441; ConvF(8.48, 8.48, 8.48); Calibrated: 2016/11/15;
- Sensor-Surface: 1.4mm (Mechanical Surface Detection)
- Electronics: DAE3 Sn379; Calibrated: 2016/10/4
- Phantom: SAM1; Type: QD000P40CC; Serial: TP:1412
- Measurement SW: DASY52, Version 52.8 (8);

Area Scan (61x101x1): Interpolated grid: dx=1.500 mm, dy=1.500 mm

Maximum value of SAR (interpolated) = 0.147 W/kg

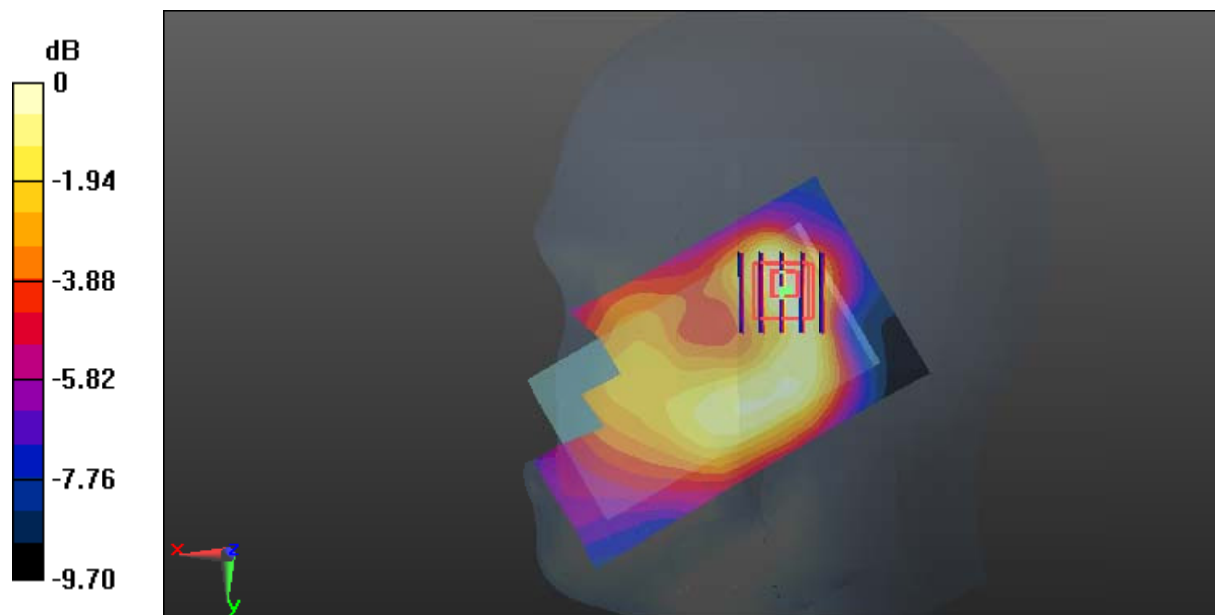
Zoom Scan (5x5x7)/Cube 0: Measurement grid: dx=8mm, dy=8mm, dz=5mm

Reference Value = 6.783 V/m; Power Drift = -0.19 dB

Peak SAR (extrapolated) = 0.164 W/kg

SAR(1 g) = 0.100 W/kg; SAR(10 g) = 0.062 W/kg

Maximum value of SAR (measured) = 0.135 W/kg



0 dB = 0.135 W/kg = -8.70 dBW/kg

Test Plot 14#: GSM 1900_Body Worn Back_Middle

DUT: Mobile Phone; Type: Nitro 4s; Serial: 17031000220;

Communication System: Generic GSM; Frequency: 1880 MHz; Duty Cycle: 1:8
 Medium parameters used: 1880 MHz; $\sigma = 1.512 \text{ S/m}$; $\epsilon_r = 52.628$; $\rho = 1000 \text{ kg/m}^3$;
 Phantom section: Left Section

DASY5 Configuration:

- Probe: EX3DV4 - SN7441; ConvF(7.95, 7.95, 7.95); Calibrated: 2016/11/15;
- Sensor-Surface: 1.4mm (Mechanical Surface Detection)
- Electronics: DAE3 Sn379; Calibrated: 2016/10/4
- Phantom: Triple Flat Phantom 5.1C; Type: QD 000 P51 CA; Serial: 1130
- Measurement SW: DASY52, Version 52.8 (8);

Area Scan (101x61x1): Interpolated grid: dx=1.500 mm, dy=1.500 mm

Maximum value of SAR (interpolated) = 0.747 W/kg

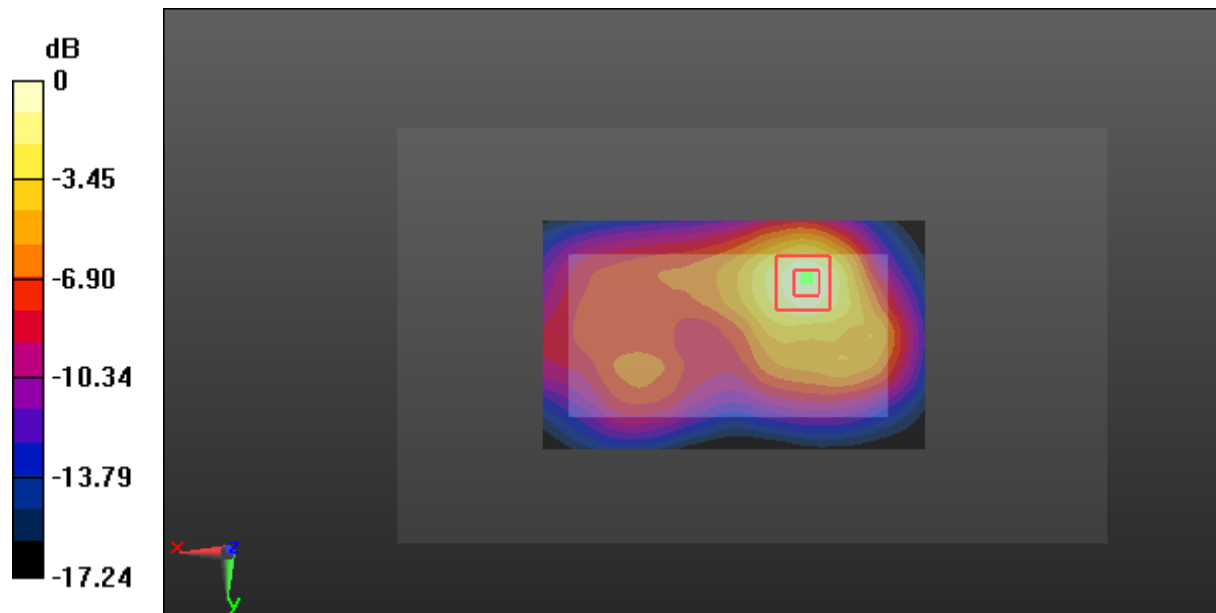
Zoom Scan (5x5x7)/Cube 0: Measurement grid: dx=8mm, dy=8mm, dz=5mm

Reference Value = 10.04 V/m; Power Drift = 0.05 dB

Peak SAR (extrapolated) = 0.872 W/kg

SAR(1 g) = 0.501 W/kg; SAR(10 g) = 0.272 W/kg

Maximum value of SAR (measured) = 0.728 W/kg



0 dB = 0.728 W/kg = -1.38 dBW/kg

Test Plot 15#: GSM 1900_Body Back_Middle

DUT: Mobile Phone; Type: Nitro 4s; Serial: 17031000220;

Communication System: Generic GPRS-3 slots; Frequency: 1880 MHz; Duty Cycle: 1:2.66
 Medium parameters used: 1880 MHz; $\sigma = 1.512 \text{ S/m}$; $\epsilon_r = 52.628$; $\rho = 1000 \text{ kg/m}^3$;
 Phantom section: Left Section

DASY5 Configuration:

- Probe: EX3DV4 - SN7441; ConvF(7.95, 7.95, 7.95); Calibrated: 2016/11/15;
- Sensor-Surface: 1.4mm (Mechanical Surface Detection)
- Electronics: DAE3 Sn379; Calibrated: 2016/10/4
- Phantom: Triple Flat Phantom 5.1C; Type: QD 000 P51 CA; Serial: 1130
- Measurement SW: DASY52, Version 52.8 (8);

Area Scan (101x61x1): Interpolated grid: dx=1.500 mm, dy=1.500 mm

Maximum value of SAR (interpolated) = 1.04 W/kg

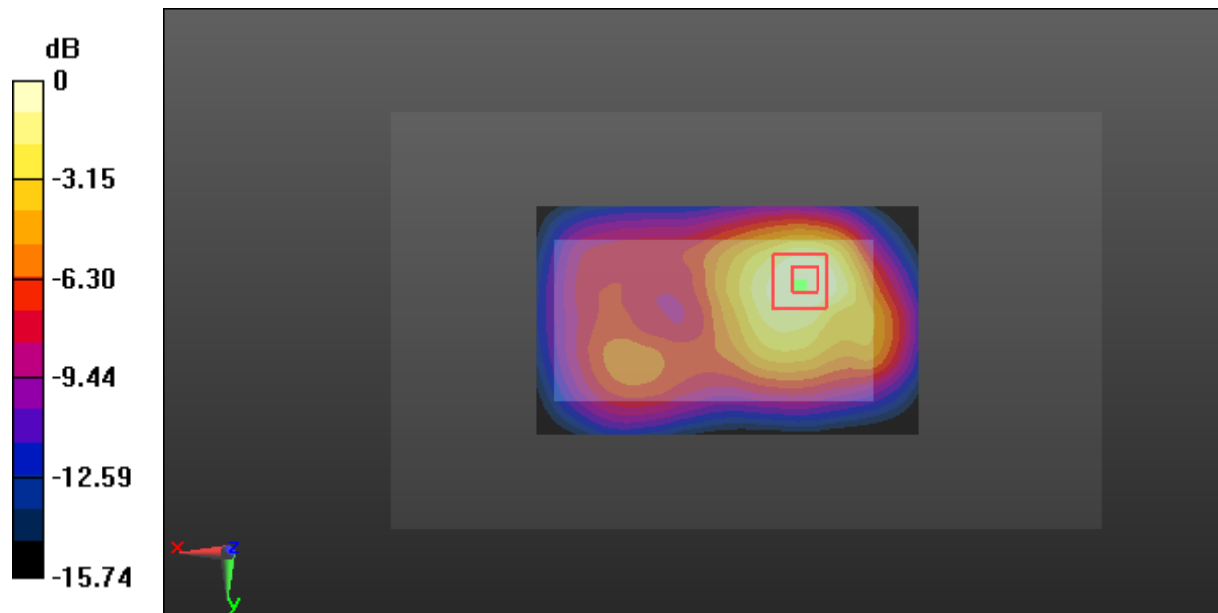
Zoom Scan (5x5x7)/Cube 0: Measurement grid: dx=8mm, dy=8mm, dz=5mm

Reference Value = 15.66 V/m; Power Drift = -0.03 dB

Peak SAR (extrapolated) = 1.16 W/kg

SAR(1 g) = 0.652 W/kg; SAR(10 g) = 0.366 W/kg

Maximum value of SAR (measured) = 0.915 W/kg



0 dB = 0.915 W/kg = -0.39 dBW/kg

Test Plot 16#: GSM 1900_Body Left_Middle

DUT: Mobile Phone; Type: Nitro 4s; Serial: 17031000220;

Communication System: Generic GPRS-3 slots; Frequency: 1880 MHz; Duty Cycle: 1:2.66
 Medium parameters used: 1880 MHz; $\sigma = 1.512$ S/m; $\epsilon_r = 52.628$; $\rho = 1000$ kg/m³ ;
 Phantom section: Left Section

DASY5 Configuration:

- Probe: EX3DV4 - SN7441; ConvF(7.95, 7.95, 7.95); Calibrated: 2016/11/15;
- Sensor-Surface: 1.4mm (Mechanical Surface Detection)
- Electronics: DAE3 Sn379; Calibrated: 2016/10/4
- Phantom: Triple Flat Phantom 5.1C; Type: QD 000 P51 CA; Serial: 1130
- Measurement SW: DASY52, Version 52.8 (8);

Area Scan (101x51x1): Interpolated grid: dx=1.500 mm, dy=1.500 mm

Maximum value of SAR (interpolated) = 0.274 W/kg

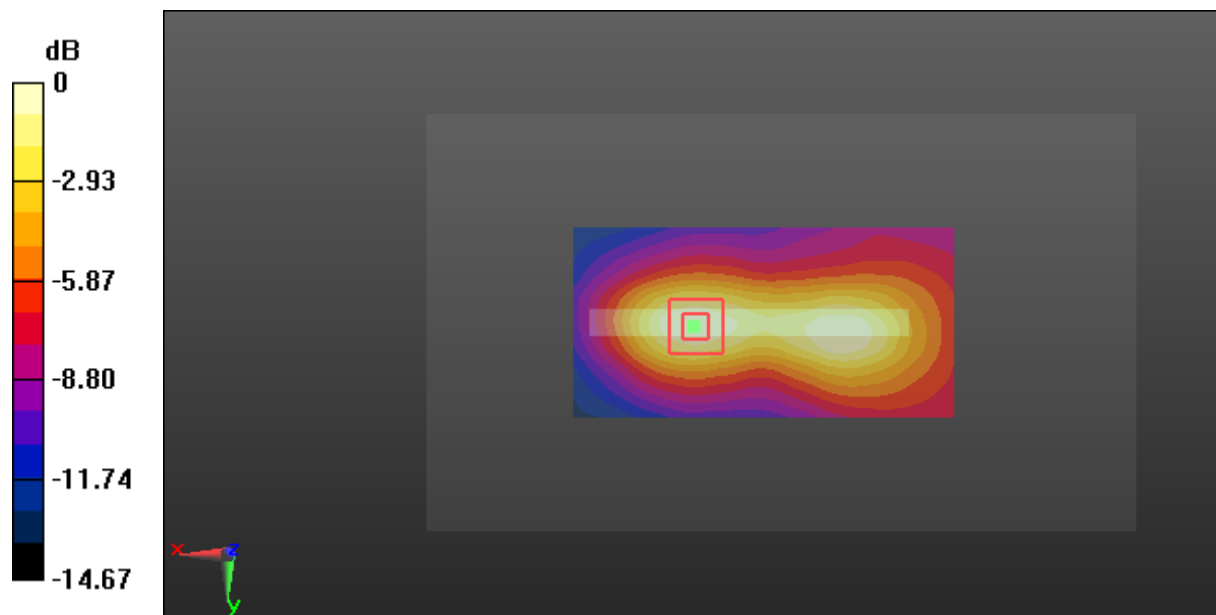
Zoom Scan (5x5x7)/Cube 0: Measurement grid: dx=8mm, dy=8mm, dz=5mm

Reference Value = 9.300 V/m; Power Drift = 0.02 dB

Peak SAR (extrapolated) = 0.312 W/kg

SAR(1 g) = 0.181 W/kg; SAR(10 g) = 0.104 W/kg

Maximum value of SAR (measured) = 0.264 W/kg



0 dB = 0.264 W/kg = -5.78 dBW/kg

Test Plot 17#: GSM 1900_Body Right_Middle

DUT: Mobile Phone; Type: Nitro 4s; Serial: 17031000220;

Communication System: Generic GPRS-3 slots; Frequency: 1880 MHz; Duty Cycle: 1:2.66
 Medium parameters used: 1880 MHz; $\sigma = 1.512 \text{ S/m}$; $\epsilon_r = 52.628$; $\rho = 1000 \text{ kg/m}^3$;
 Phantom section: Left Section

DASY5 Configuration:

- Probe: EX3DV4 - SN7441; ConvF(7.95, 7.95, 7.95); Calibrated: 2016/11/15;
- Sensor-Surface: 1.4mm (Mechanical Surface Detection)
- Electronics: DAE3 Sn379; Calibrated: 2016/10/4
- Phantom: Triple Flat Phantom 5.1C; Type: QD 000 P51 CA; Serial: 1130
- Measurement SW: DASY52, Version 52.8 (8);

Area Scan (101x51x1): Interpolated grid: dx=1.500 mm, dy=1.500 mm

Maximum value of SAR (interpolated) = 0.219 W/kg

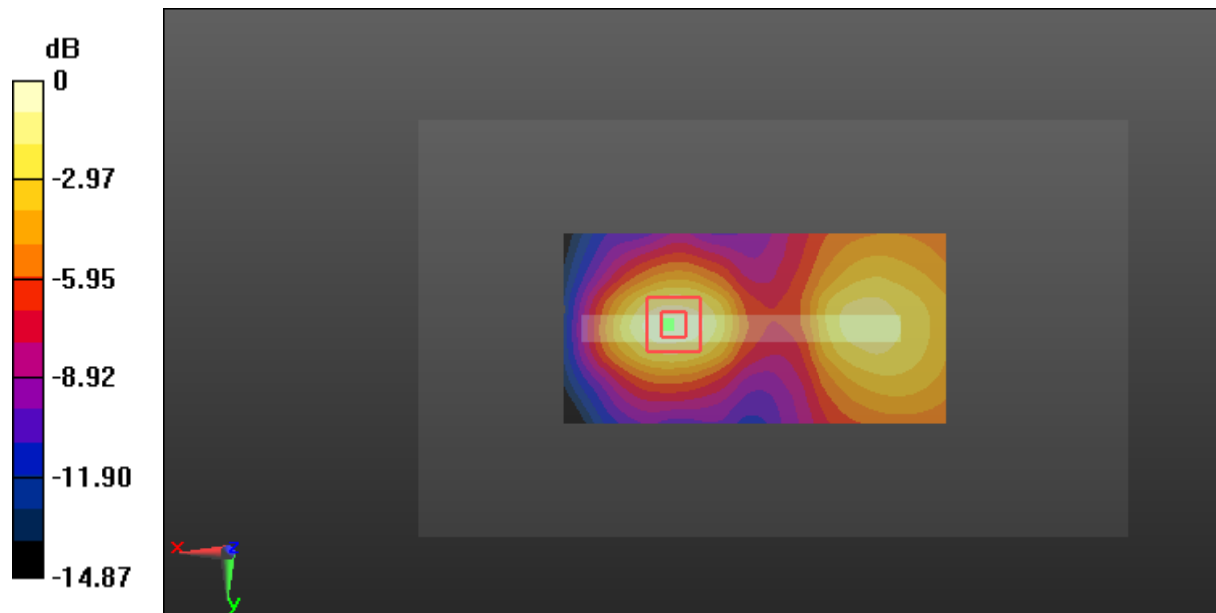
Zoom Scan (5x5x7)/Cube 0: Measurement grid: dx=8mm, dy=8mm, dz=5mm

Reference Value = 4.510 V/m; Power Drift = -0.16 dB

Peak SAR (extrapolated) = 0.262 W/kg

SAR(1 g) = 0.158 W/kg; SAR(10 g) = 0.093 W/kg

Maximum value of SAR (measured) = 0.222 W/kg



0 dB = 0.222 W/kg = -6.54 dBW/kg

Test Plot 18#: GSM 1900_Body Bottom_Middle

DUT: Mobile Phone; Type: Nitro 4s; Serial: 17031000220;

Communication System: Generic GPRS-3 slots; Frequency: 1880 MHz; Duty Cycle: 1:2.66
 Medium parameters used: 1880 MHz; $\sigma = 1.512$ S/m; $\epsilon_r = 52.628$; $\rho = 1000$ kg/m³ ;
 Phantom section: Left Section

DASY5 Configuration:

- Probe: EX3DV4 - SN7441; ConvF(7.95, 7.95, 7.95); Calibrated: 2016/11/15;
- Sensor-Surface: 1.4mm (Mechanical Surface Detection)
- Electronics: DAE3 Sn379; Calibrated: 2016/10/4
- Phantom: Triple Flat Phantom 5.1C; Type: QD 000 P51 CA; Serial: 1130
- Measurement SW: DASY52, Version 52.8 (8);

Area Scan (61x71x1): Interpolated grid: dx=1.500 mm, dy=1.500 mm

Maximum value of SAR (interpolated) = 0.626 W/kg

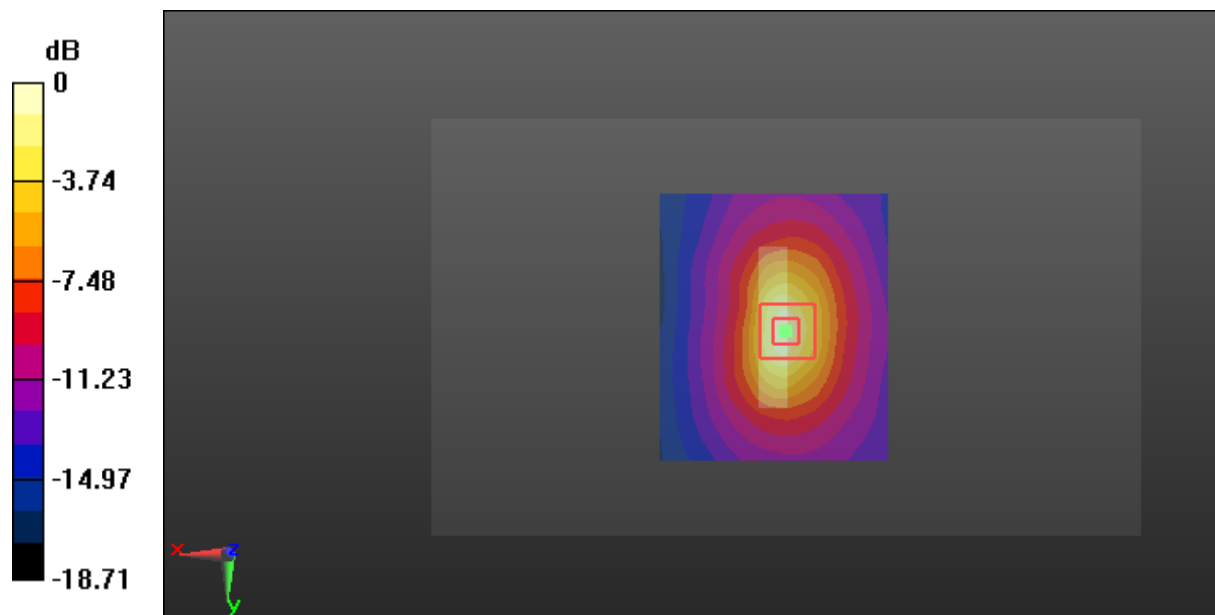
Zoom Scan (5x5x7)/Cube 0: Measurement grid: dx=8mm, dy=8mm, dz=5mm

Reference Value = 17.82 V/m; Power Drift = -0.07 dB

Peak SAR (extrapolated) = 0.792 W/kg

SAR(1 g) = 0.436 W/kg; SAR(10 g) = 0.225 W/kg

Maximum value of SAR (measured) = 0.674 W/kg



0 dB = 0.674 W/kg = -1.71 dBW/kg

Test Plot 19#: WCDMA Band 2_Head Left Cheek_Middle**DUT: Mobile Phone; Type: Nitro 4s; Serial: 17031000220;**

Communication System: Communication System: WCDMA; Frequency: 1880 MHz; Duty Cycle: 1:1
Medium parameters used: 1880 MHz; $\sigma = 1.389$ S/m; $\epsilon_r = 38.989$; $\rho = 1000$ kg/m³ ;
Phantom section: Left Section

DASY5 Configuration:

- Probe: EX3DV4 - SN7441; ConvF(8.48, 8.48, 8.48); Calibrated: 2016/11/15;
- Sensor-Surface: 1.4mm (Mechanical Surface Detection)
- Electronics: DAE3 Sn379; Calibrated: 2016/10/4
- Phantom: SAM1; Type: QD000P40CC; Serial: TP:1412
- Measurement SW: DASY52, Version 52.8 (8);

Area Scan (61x101x1): Interpolated grid: dx=1.500 mm, dy=1.500 mm

Maximum value of SAR (interpolated) = 0.670 W/kg

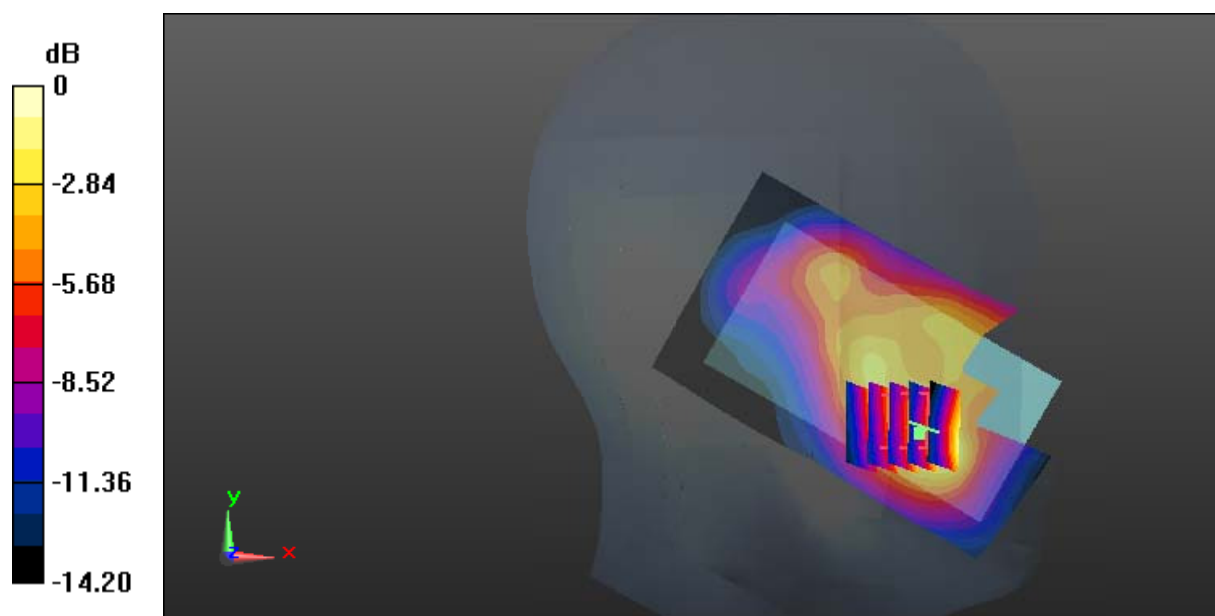
Zoom Scan (5x5x7)/Cube 0: Measurement grid: dx=8mm, dy=8mm, dz=5mm

Reference Value = 6.596 V/m; Power Drift = 0.01 dB

Peak SAR (extrapolated) = 0.787 W/kg

SAR(1 g) = 0.459 W/kg; SAR(10 g) = 0.268 W/kg

Maximum value of SAR (measured) = 0.656 W/kg



0 dB = 0.656 W/kg = -1.83 dBW/kg

Test Plot 20#: WCDMA Band 2_Head Left Tilt_Middle

DUT: Mobile Phone; Type: Nitro 4s; Serial: 17031000220;

Communication System: Communication System: WCDMA; Frequency: 1880 MHz;Duty Cycle: 1:1
 Medium parameters used: 1880 MHz; $\sigma = 1.389 \text{ S/m}$; $\epsilon_r = 38.989$; $\rho = 1000 \text{ kg/m}^3$;
 Phantom section: Left Section

DASY5 Configuration:

- Probe: EX3DV4 - SN7441; ConvF(8.48, 8.48, 8.48); Calibrated: 2016/11/15;
- Sensor-Surface: 1.4mm (Mechanical Surface Detection)
- Electronics: DAE3 Sn379; Calibrated: 2016/10/4
- Phantom: SAM1; Type: QD000P40CC; Serial: TP:1412
- Measurement SW: DASY52, Version 52.8 (8);

Area Scan (61x101x1): Interpolated grid: dx=1.500 mm, dy=1.500 mm

Maximum value of SAR (interpolated) = 0.229 W/kg

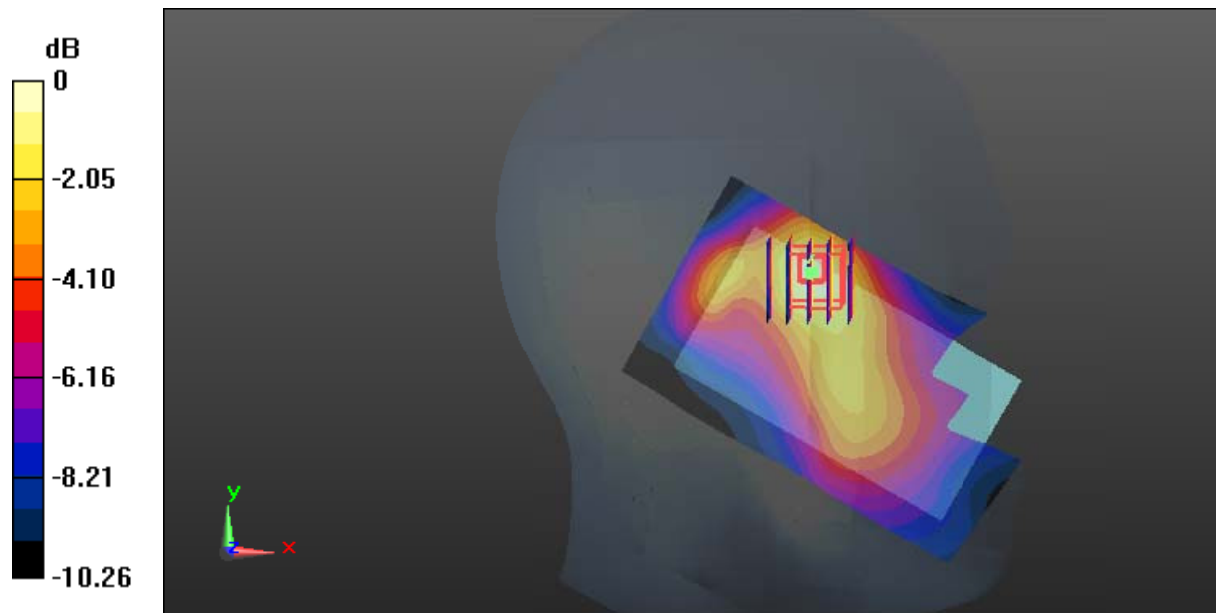
Zoom Scan (5x5x7)/Cube 0: Measurement grid: dx=8mm, dy=8mm, dz=5mm

Reference Value = 7.827 V/m; Power Drift = -0.13 dB

Peak SAR (extrapolated) = 0.254 W/kg

SAR(1 g) = 0.161 W/kg; SAR(10 g) = 0.102 W/kg

Maximum value of SAR (measured) = 0.214 W/kg



0 dB = 0.214 W/kg = -6.70 dBW/kg

Test Plot 21#: WCDMA Band 2_Head Right Cheek_Middle

DUT: Mobile Phone; Type: Nitro 4s; Serial: 17031000220;

Communication System: Communication System: WCDMA; Frequency: 1880 MHz;Duty Cycle: 1:1
 Medium parameters used: 1880 MHz; $\sigma = 1.389 \text{ S/m}$; $\epsilon_r = 38.989$; $\rho = 1000 \text{ kg/m}^3$;
 Phantom section: Right Section

DASY5 Configuration:

- Probe: EX3DV4 - SN7441; ConvF(8.48, 8.48, 8.48); Calibrated: 2016/11/15;
- Sensor-Surface: 1.4mm (Mechanical Surface Detection)
- Electronics: DAE3 Sn379; Calibrated: 2016/10/4
- Phantom: SAM1; Type: QD000P40CC; Serial: TP:1412
- Measurement SW: DASY52, Version 52.8 (8);

Area Scan (61x101x1): Interpolated grid: dx=1.500 mm, dy=1.500 mm

Maximum value of SAR (interpolated) = 0.595 W/kg

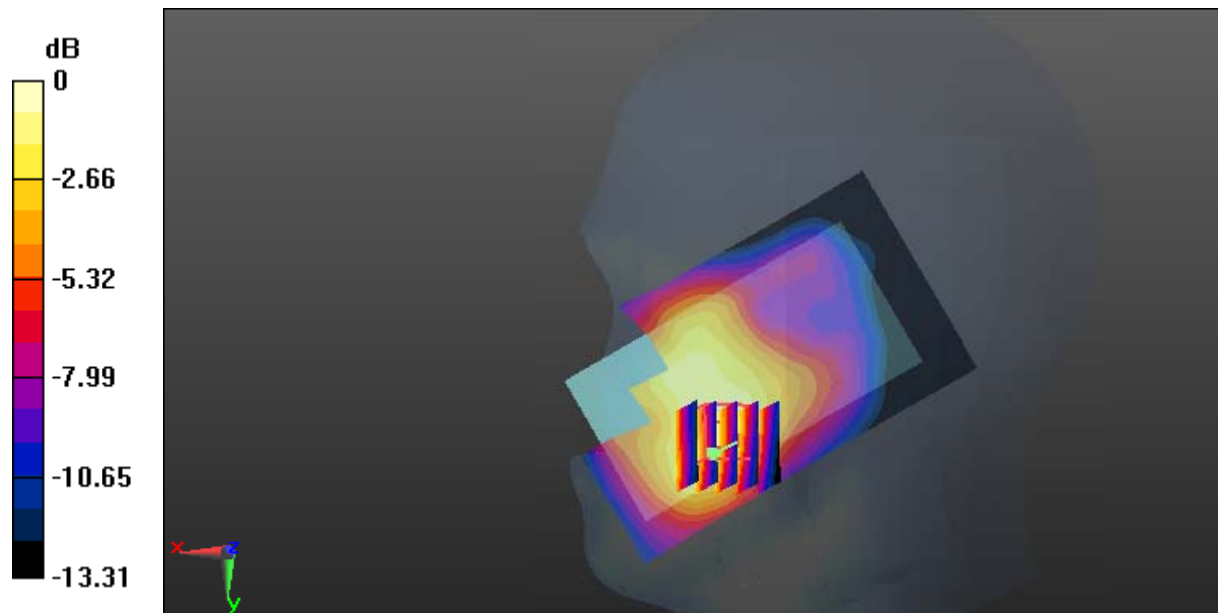
Zoom Scan (5x5x7)/Cube 0: Measurement grid: dx=8mm, dy=8mm, dz=5mm

Reference Value = 4.803 V/m; Power Drift = -0.14 dB

Peak SAR (extrapolated) = 0.695 W/kg

SAR(1 g) = 0.450 W/kg; SAR(10 g) = 0.279 W/kg

Maximum value of SAR (measured) = 0.592 W/kg



0 dB = 0.592 W/kg = -2.28 dBW/kg

Test Plot 22#: WCDMA Band 2_Head Right Tilt_Middle

DUT: Mobile Phone; Type: Nitro 4s; Serial: 17031000220;

Communication System: Communication System: WCDMA; Frequency: 1880 MHz;Duty Cycle: 1:1
 Medium parameters used: 1880 MHz; $\sigma = 1.389 \text{ S/m}$; $\epsilon_r = 38.989$; $\rho = 1000 \text{ kg/m}^3$;
 Phantom section: Right Section

DASY5 Configuration:

- Probe: EX3DV4 - SN7441; ConvF(8.48, 8.48, 8.48); Calibrated: 2016/11/15;
- Sensor-Surface: 1.4mm (Mechanical Surface Detection)
- Electronics: DAE3 Sn379; Calibrated: 2016/10/4
- Phantom: SAM1; Type: QD000P40CC; Serial: TP:1412
- Measurement SW: DASY52, Version 52.8 (8);

Area Scan (61x101x1): Interpolated grid: dx=1.500 mm, dy=1.500 mm

Maximum value of SAR (interpolated) = 0.167 W/kg

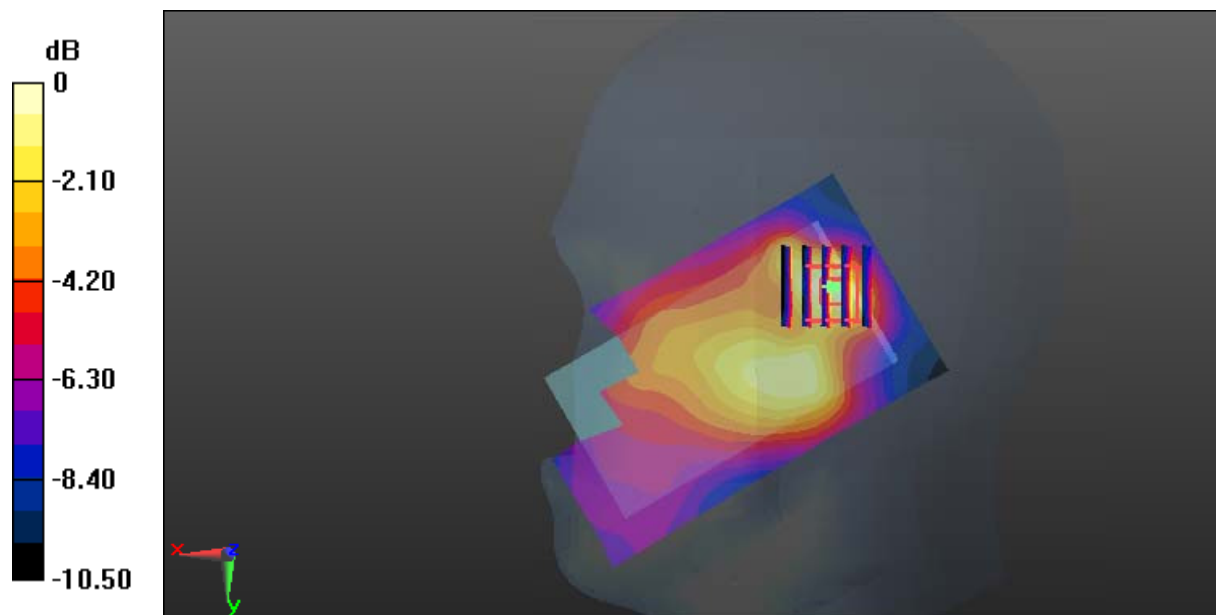
Zoom Scan (5x5x7)/Cube 0: Measurement grid: dx=8mm, dy=8mm, dz=5mm

Reference Value = 9.744 V/m; Power Drift = -0.05 dB

Peak SAR (extrapolated) = 0.211 W/kg

SAR(1 g) = 0.117 W/kg; SAR(10 g) = 0.066 W/kg

Maximum value of SAR (measured) = 0.174 W/kg



0 dB = 0.174 W/kg = -7.59 dBW/kg

Test Plot 23#: WCDMA Band 2_Body Back_Middle

DUT: Mobile Phone; Type: Nitro 4s; Serial: 17031000220;

Communication System: Generic WCDMA; Frequency: 1880 MHz; Duty Cycle: 1:1
 Medium parameters used: 1880 MHz; $\sigma = 1.512$ S/m; $\epsilon_r = 52.628$; $\rho = 1000$ kg/m³ ;
 Phantom section: Left Section

DASY5 Configuration:

- Probe: EX3DV4 - SN7441; ConvF(7.95, 7.95, 7.95); Calibrated: 2016/11/15;
- Sensor-Surface: 1.4mm (Mechanical Surface Detection)
- Electronics: DAE3 Sn379; Calibrated: 2016/10/4
- Phantom: Triple Flat Phantom 5.1C; Type: QD 000 P51 CA; Serial: 1130
- Measurement SW: DASY52, Version 52.8 (8);

Area Scan (101x61x1): Interpolated grid: dx=1.500 mm, dy=1.500 mm

Maximum value of SAR (interpolated) = 0.795 W/kg

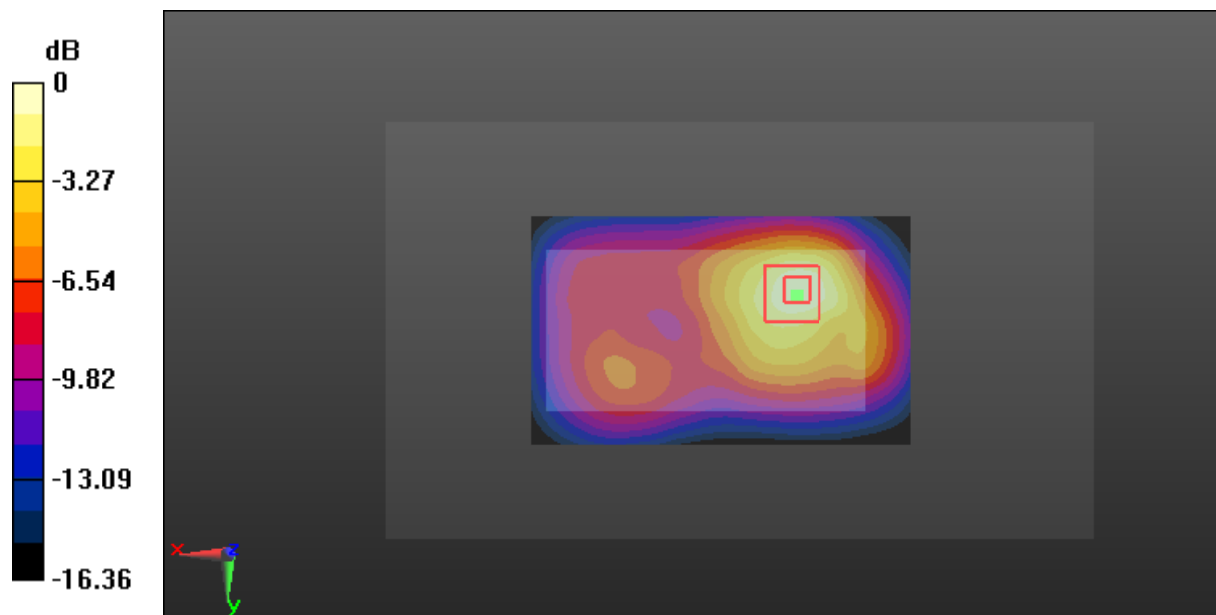
Zoom Scan (5x5x7)/Cube 0: Measurement grid: dx=8mm, dy=8mm, dz=5mm

Reference Value = 13.27 V/m; Power Drift = -0.13 dB

Peak SAR (extrapolated) = 0.963 W/kg

SAR(1 g) = 0.547 W/kg; SAR(10 g) = 0.309 W/kg

Maximum value of SAR (measured) = 0.787 W/kg



0 dB = 0.787 W/kg = -1.04 dBW/kg

Test Plot 24#: WCDMA Band 2_Body Left_Middle

DUT: Mobile Phone; Type: Nitro 4s; Serial: 17031000220;

Communication System: Generic WCDMA; Frequency: 1880 MHz; Duty Cycle: 1:1
 Medium parameters used: 1880 MHz; $\sigma = 1.512$ S/m; $\epsilon_r = 52.628$; $\rho = 1000$ kg/m³ ;
 Phantom section: Left Section

DASY5 Configuration:

- Probe: EX3DV4 - SN7441; ConvF(7.95, 7.95, 7.95); Calibrated: 2016/11/15;
- Sensor-Surface: 1.4mm (Mechanical Surface Detection)
- Electronics: DAE3 Sn379; Calibrated: 2016/10/4
- Phantom: Triple Flat Phantom 5.1C; Type: QD 000 P51 CA; Serial: 1130
- Measurement SW: DASY52, Version 52.8 (8);

Area Scan (101x51x1): Interpolated grid: dx=1.500 mm, dy=1.500 mm

Maximum value of SAR (interpolated) = 0.210 W/kg

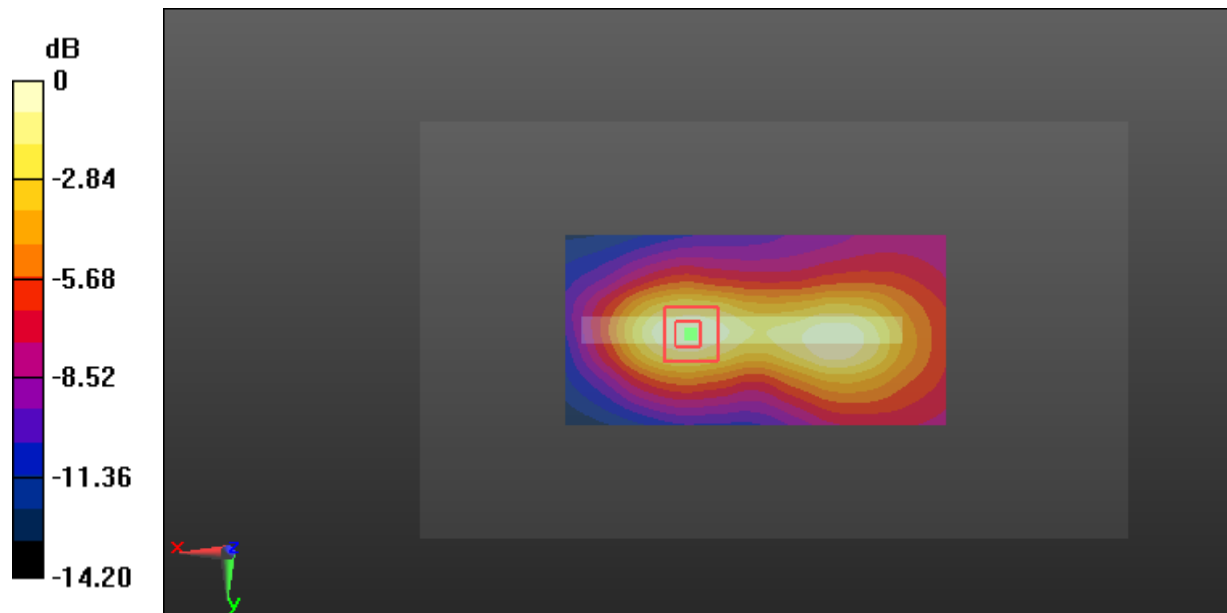
Zoom Scan (5x5x7)/Cube 0: Measurement grid: dx=8mm, dy=8mm, dz=5mm

Reference Value = 8.240 V/m; Power Drift = 0.03 dB

Peak SAR (extrapolated) = 0.240 W/kg

SAR(1 g) = 0.138 W/kg; SAR(10 g) = 0.080 W/kg

Maximum value of SAR (measured) = 0.202 W/kg



0 dB = 0.202 W/kg = -6.95 dBW/kg

Test Plot 25#: WCDMA Band 2_Body Right_Middle

DUT: Mobile Phone; Type: Nitro 4s; Serial: 17031000220;

Communication System: Generic WCDMA; Frequency: 1880 MHz; Duty Cycle: 1:1
 Medium parameters used: 1880 MHz; $\sigma = 1.512 \text{ S/m}$; $\epsilon_r = 52.628$; $\rho = 1000 \text{ kg/m}^3$;
 Phantom section: Left Section

DASY5 Configuration:

- Probe: EX3DV4 - SN7441; ConvF(7.95, 7.95, 7.95); Calibrated: 2016/11/15;
- Sensor-Surface: 1.4mm (Mechanical Surface Detection)
- Electronics: DAE3 Sn379; Calibrated: 2016/10/4
- Phantom: Triple Flat Phantom 5.1C; Type: QD 000 P51 CA; Serial: 1130
- Measurement SW: DASY52, Version 52.8 (8);

Area Scan (101x51x1): Interpolated grid: dx=1.500 mm, dy=1.500 mm

Maximum value of SAR (interpolated) = 0.164 W/kg

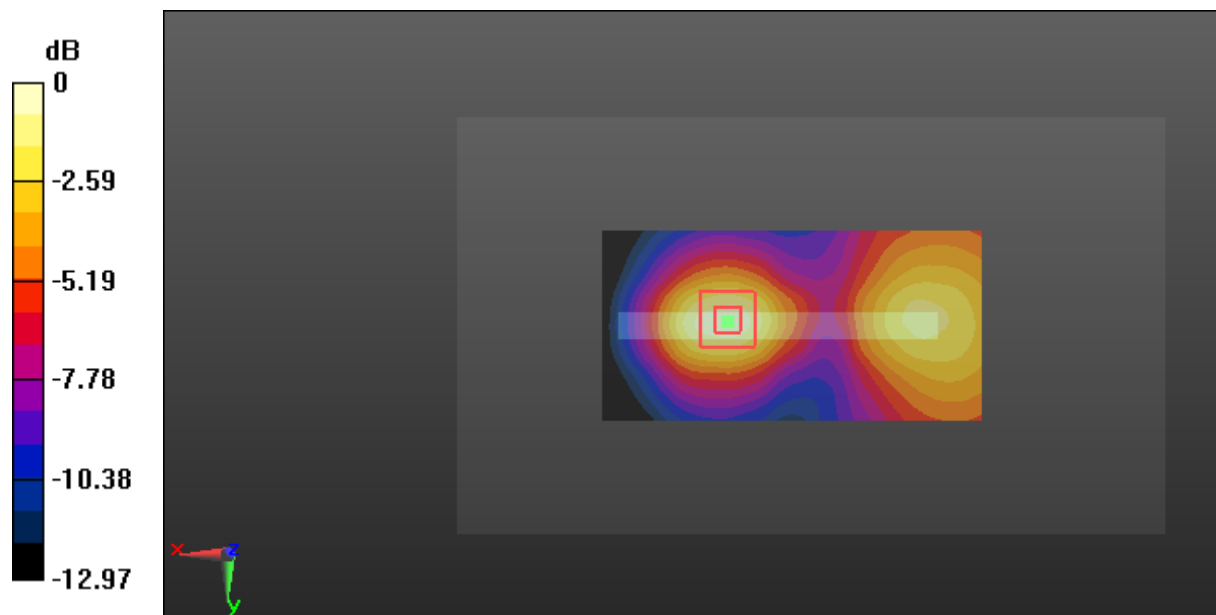
Zoom Scan (5x5x7)/Cube 0: Measurement grid: dx=8mm, dy=8mm, dz=5mm

Reference Value = 3.965 V/m; Power Drift = 0.20 dB

Peak SAR (extrapolated) = 0.197 W/kg

SAR(1 g) = 0.118 W/kg; SAR(10 g) = 0.070 W/kg

Maximum value of SAR (measured) = 0.168 W/kg



0 dB = 0.168 W/kg = -7.75 dBW/kg

Test Plot 26#: WCDMA Band 2_Body Bottom_Middle

DUT: Mobile Phone; Type: Nitro 4s; Serial: 17031000220;

Communication System: Generic WCDMA; Frequency: 1880 MHz; Duty Cycle: 1:1
 Medium parameters used: 1880 MHz; $\sigma = 1.512 \text{ S/m}$; $\epsilon_r = 52.628$; $\rho = 1000 \text{ kg/m}^3$;
 Phantom section: Left Section

DASY5 Configuration:

- Probe: EX3DV4 - SN7441; ConvF(7.95, 7.95, 7.95); Calibrated: 2016/11/15;
- Sensor-Surface: 1.4mm (Mechanical Surface Detection)
- Electronics: DAE3 Sn379; Calibrated: 2016/10/4
- Phantom: Triple Flat Phantom 5.1C; Type: QD 000 P51 CA; Serial: 1130
- Measurement SW: DASY52, Version 52.8 (8);

Area Scan (61x71x1): Interpolated grid: dx=1.500 mm, dy=1.500 mm

Maximum value of SAR (interpolated) = 0.462 W/kg

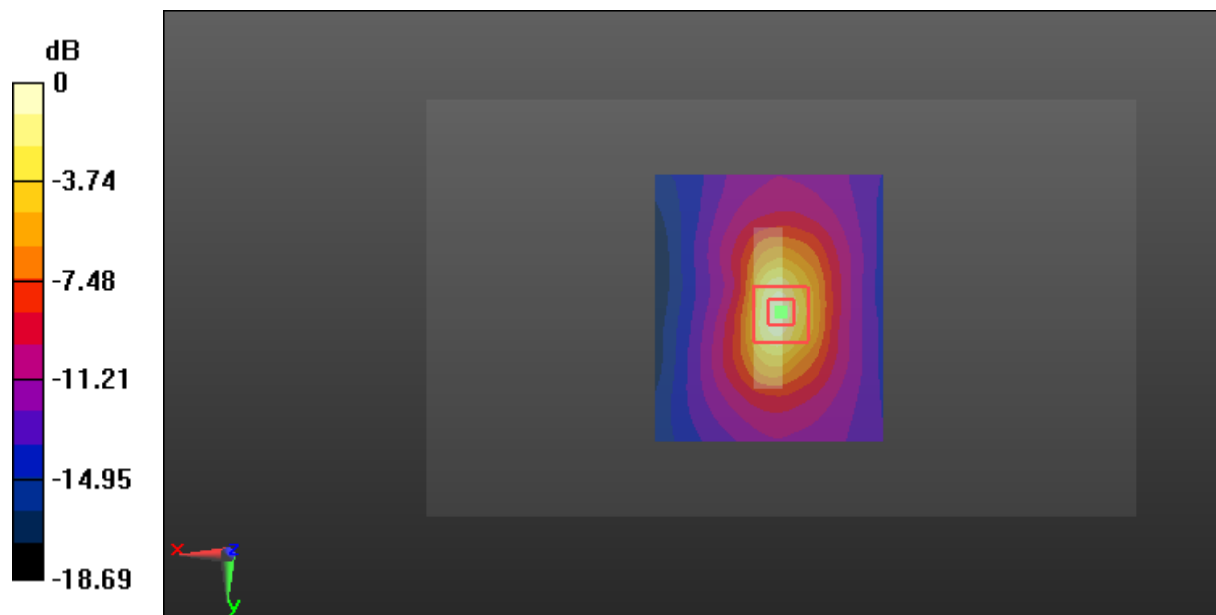
Zoom Scan (5x5x7)/Cube 0: Measurement grid: dx=8mm, dy=8mm, dz=5mm

Reference Value = 15.63 V/m; Power Drift = 0.01 dB

Peak SAR (extrapolated) = 0.587 W/kg

SAR(1 g) = 0.318 W/kg; SAR(10 g) = 0.157 W/kg

Maximum value of SAR (measured) = 0.496 W/kg



0 dB = 0.496 W/kg = -3.05 dBW/kg

Test Plot 27#: WCDMA Band 5_Head Left Cheek_Middle

DUT: Mobile Phone; Type: Nitro 4s; Serial: 17031000220;

Communication System: Communication System: WCDMA; Frequency: 836.6 MHz; Duty Cycle: 1:1
 Medium parameters used: 836.6 MHz; $\sigma = 0.896$ S/m; $\epsilon_r = 40.862$; $\rho = 1000$ kg/m³ ;
 Phantom section: Left Section

DASY5 Configuration:

- Probe: EX3DV4 - SN7441; ConvF(10.22, 10.22, 10.22); Calibrated: 2016/11/15;
- Sensor-Surface: 1.4mm (Mechanical Surface Detection)
- Electronics: DAE3 Sn379; Calibrated: 2016/10/4
- Phantom: SAM1; Type: QD000P40CC; Serial: TP:1412
- Measurement SW: DASY52, Version 52.8 (8);

Area Scan (61x101x1): Interpolated grid: dx=1.500 mm, dy=1.500 mm

Maximum value of SAR (interpolated) = 0.707 W/kg

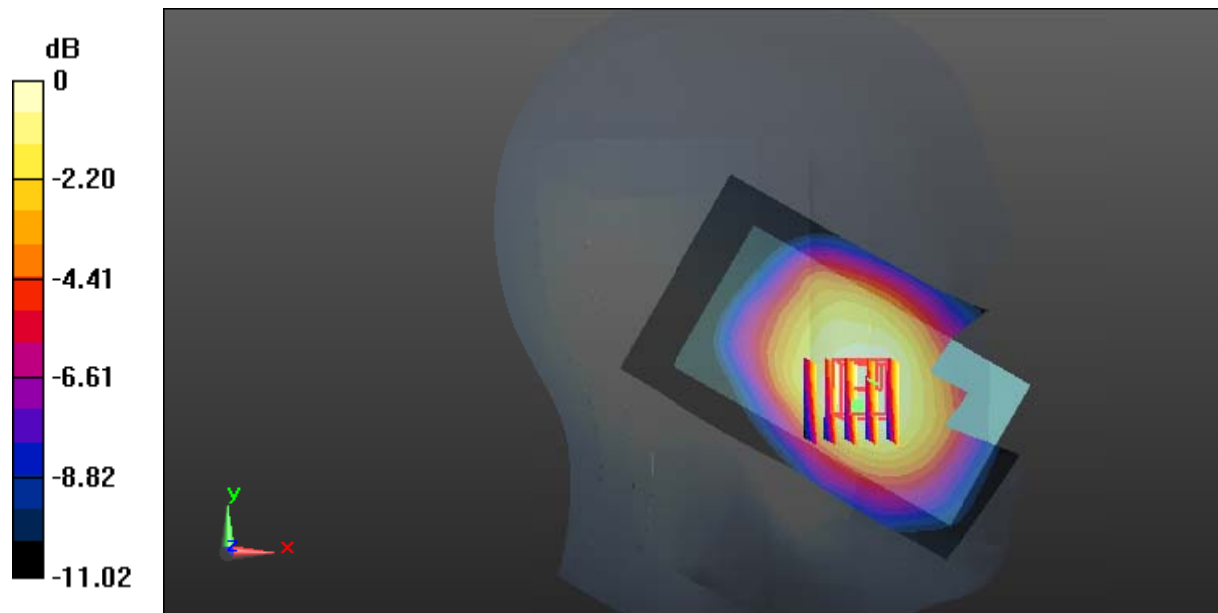
Zoom Scan (5x5x7)/Cube 0: Measurement grid: dx=8mm, dy=8mm, dz=5mm

Reference Value = 6.653 V/m; Power Drift = 0.10 dB

Peak SAR (extrapolated) = 0.734 W/kg

SAR(1 g) = 0.590 W/kg; SAR(10 g) = 0.433 W/kg

Maximum value of SAR (measured) = 0.685 W/kg



0 dB = 0.685 W/kg = -1.64 dBW/kg

Test Plot 28#: WCDMA Band 5_Head Left Tilt_Middle

DUT: Mobile Phone; Type: Nitro 4s; Serial: 17031000220;

Communication System: Communication System: WCDMA; Frequency: 836.6 MHz; Duty Cycle: 1:1
 Medium parameters used: 836.6 MHz; $\sigma = 0.896$ S/m; $\epsilon_r = 40.862$; $\rho = 1000$ kg/m³ ;
 Phantom section: Left Section

DASY5 Configuration:

- Probe: EX3DV4 - SN7441; ConvF(10.22, 10.22, 10.22); Calibrated: 2016/11/15;
- Sensor-Surface: 1.4mm (Mechanical Surface Detection)
- Electronics: DAE3 Sn379; Calibrated: 2016/10/4
- Phantom: SAM1; Type: QD000P40CC; Serial: TP:1412
- Measurement SW: DASY52, Version 52.8 (8);

Area Scan (61x101x1): Interpolated grid: dx=1.500 mm, dy=1.500 mm

Maximum value of SAR (interpolated) = 0.370 W/kg

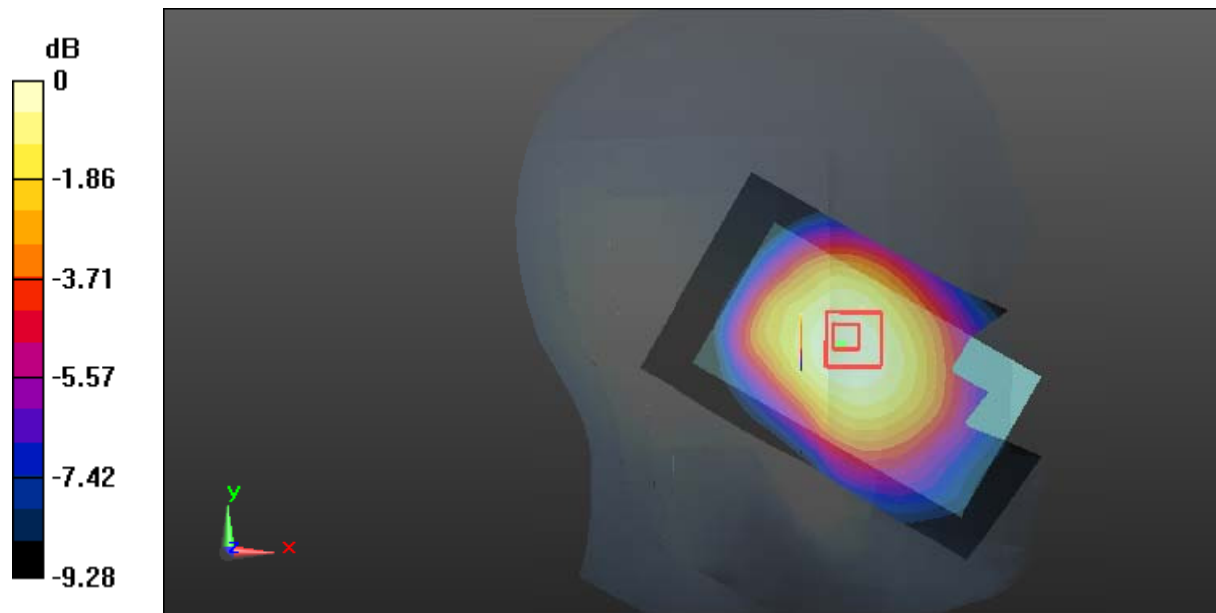
Zoom Scan (5x5x7)/Cube 0: Measurement grid: dx=8mm, dy=8mm, dz=5mm

Reference Value = 8.902 V/m; Power Drift = -0.02 dB

Peak SAR (extrapolated) = 0.391 W/kg

SAR(1 g) = 0.317 W/kg; SAR(10 g) = 0.245 W/kg

Maximum value of SAR (measured) = 0.369 W/kg



0 dB = 0.369 W/kg = -4.33 dBW/kg

Test Plot 29#: WCDMA Band 5_Head Right Cheek_Middle

DUT: Mobile Phone; Type: Nitro 4s; Serial: 17031000220;

Communication System: Communication System: WCDMA; Frequency: 836.6 MHz;Duty Cycle: 1:1
 Medium parameters used: 836.6 MHz; $\sigma = 0.896$ S/m; $\epsilon_r = 40.862$; $\rho = 1000$ kg/m³ ;
 Phantom section: Right Section

DASY5 Configuration:

- Probe: EX3DV4 - SN7441; ConvF(10.22, 10.22, 10.22); Calibrated: 2016/11/15;
- Sensor-Surface: 1.4mm (Mechanical Surface Detection)
- Electronics: DAE3 Sn379; Calibrated: 2016/10/4
- Phantom: SAM1; Type: QD000P40CC; Serial: TP:1412
- Measurement SW: DASY52, Version 52.8 (8);

Area Scan (61x101x1): Interpolated grid: dx=1.500 mm, dy=1.500 mm

Maximum value of SAR (interpolated) = 0.752 W/kg

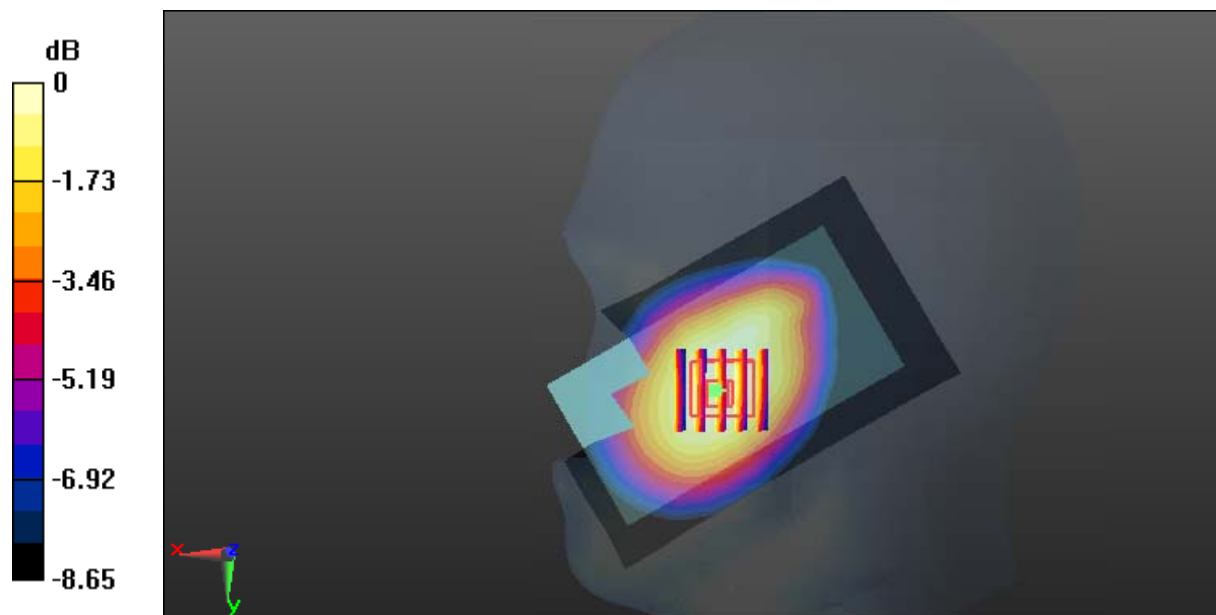
Zoom Scan (5x5x7)/Cube 0: Measurement grid: dx=8mm, dy=8mm, dz=5mm

Reference Value = 6.412 V/m; Power Drift = -0.03 dB

Peak SAR (extrapolated) = 0.754 W/kg

SAR(1 g) = 0.618 W/kg; SAR(10 g) = 0.480 W/kg

Maximum value of SAR (measured) = 0.713 W/kg



0 dB = 0.713 W/kg = -1.47 dBW/kg

Test Plot 30#: WCDMA Band 5_Head Right Tilt_Middle

DUT: Mobile Phone; Type: Nitro 4s; Serial: 17031000220;

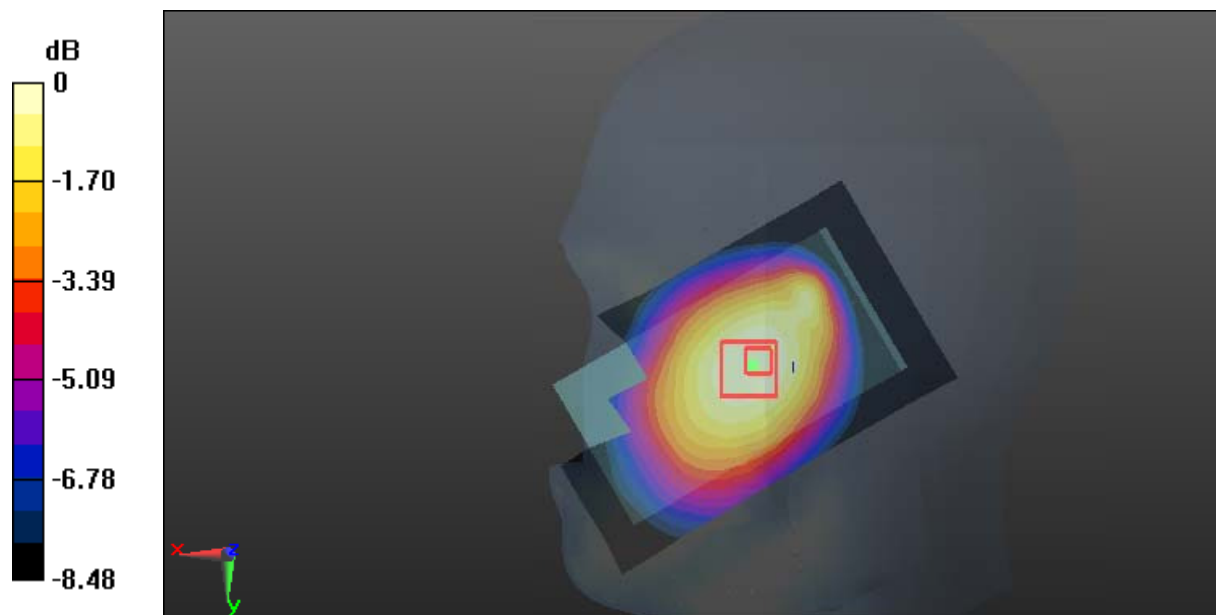
Communication System: Communication System: WCDMA; Frequency: 836.6 MHz; Duty Cycle: 1:1
 Medium parameters used: 836.6 MHz; $\sigma = 0.896$ S/m; $\epsilon_r = 40.862$; $\rho = 1000$ kg/m³ ;
 Phantom section: Right Section

DASY5 Configuration:

- Probe: EX3DV4 - SN7441; ConvF(10.22, 10.22, 10.22); Calibrated: 2016/11/15;
- Sensor-Surface: 1.4mm (Mechanical Surface Detection)
- Electronics: DAE3 Sn379; Calibrated: 2016/10/4
- Phantom: SAM1; Type: QD000P40CC; Serial: TP:1412
- Measurement SW: DASY52, Version 52.8 (8);

Area Scan (61x101x1): Interpolated grid: dx=1.500 mm, dy=1.500 mm
 Maximum value of SAR (interpolated) = 0.371 W/kg

Zoom Scan (5x5x7)/Cube 0: Measurement grid: dx=8mm, dy=8mm, dz=5mm
 Reference Value = 7.858 V/m; Power Drift = 0.14 dB
 Peak SAR (extrapolated) = 0.395 W/kg
SAR(1 g) = 0.318 W/kg; SAR(10 g) = 0.244 W/kg
 Maximum value of SAR (measured) = 0.368 W/kg



0 dB = 0.368 W/kg = -4.34 dBW/kg

Test Plot 31#: WCDMA Band 5_Body Back_Middle

DUT: Mobile Phone; Type: Nitro 4s; Serial: 17031000220;

Communication System: Generic WCDMA; Frequency: 836.6 MHz; Duty Cycle: 1:1
 Medium parameters used: 836.6 MHz; $\sigma = 0.973$ S/m; $\epsilon_r = 55.341$; $\rho = 1000$ kg/m³ ;
 Phantom section: Right Section

DASY5 Configuration:

- Probe: EX3DV4 - SN7441; ConvF(9.85, 9.85, 9.85); Calibrated: 2016/11/15;
- Sensor-Surface: 1.4mm (Mechanical Surface Detection)
- Electronics: DAE3 Sn379; Calibrated: 2016/10/4
- Phantom: Triple Flat Phantom 5.1C; Type: QD 000 P51 CA; Serial: 1130
- Measurement SW: DASY52, Version 52.8 (8);

Area Scan (101x61x1): Interpolated grid: dx=1.500 mm, dy=1.500 mm

Maximum value of SAR (interpolated) = 0.379 W/kg

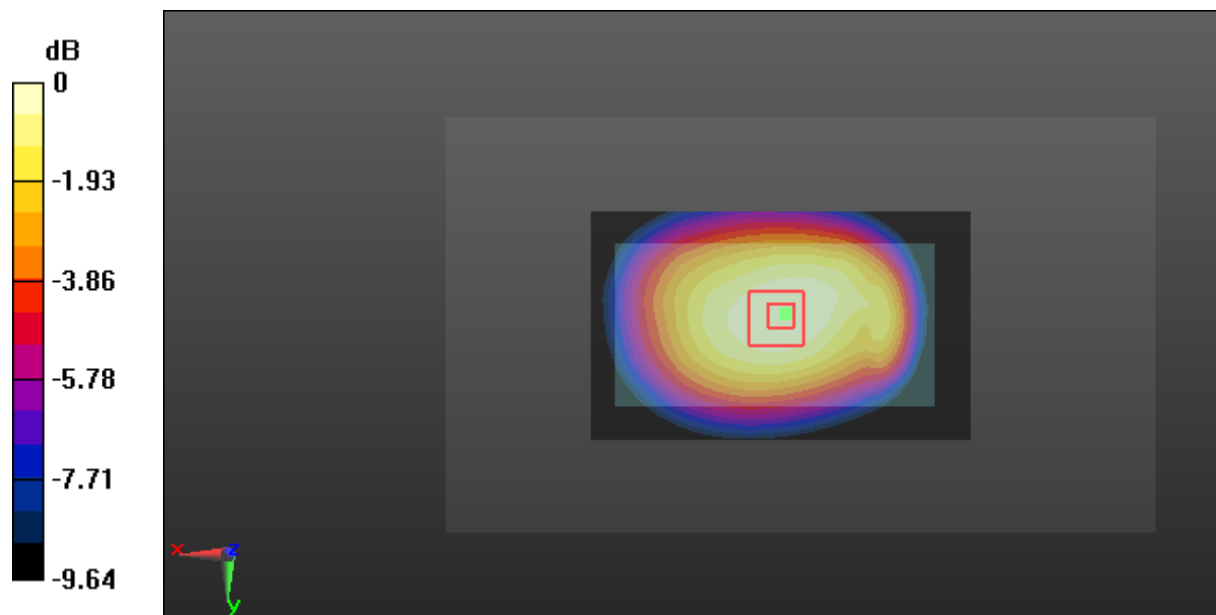
Zoom Scan (5x5x7)/Cube 0: Measurement grid: dx=8mm, dy=8mm, dz=5mm

Reference Value = 18.53 V/m; Power Drift = -0.07 dB

Peak SAR (extrapolated) = 0.411 W/kg

SAR(1 g) = 0.313 W/kg; SAR(10 g) = 0.232 W/kg

Maximum value of SAR (measured) = 0.380 W/kg



0 dB = 0.380 W/kg = -4.20 dBW/kg

Test Plot 32#: WCDMA Band 5_Body Left_Middle

DUT: Mobile Phone; Type: Nitro 4s; Serial: 17031000220;

Communication System: Generic WCDMA; Frequency: 836.6 MHz; Duty Cycle: 1:1
 Medium parameters used: 836.6 MHz; $\sigma = 0.973$ S/m; $\epsilon_r = 55.341$; $\rho = 1000$ kg/m³ ;
 Phantom section: Right Section

DASY5 Configuration:

- Probe: EX3DV4 - SN7441; ConvF(9.85, 9.85, 9.85); Calibrated: 2016/11/15;
- Sensor-Surface: 1.4mm (Mechanical Surface Detection)
- Electronics: DAE3 Sn379; Calibrated: 2016/10/4
- Phantom: Triple Flat Phantom 5.1C; Type: QD 000 P51 CA; Serial: 1130
- Measurement SW: DASY52, Version 52.8 (8);

Area Scan (101x51x1): Interpolated grid: dx=1.500 mm, dy=1.500 mm

Maximum value of SAR (interpolated) = 0.0777 W/kg

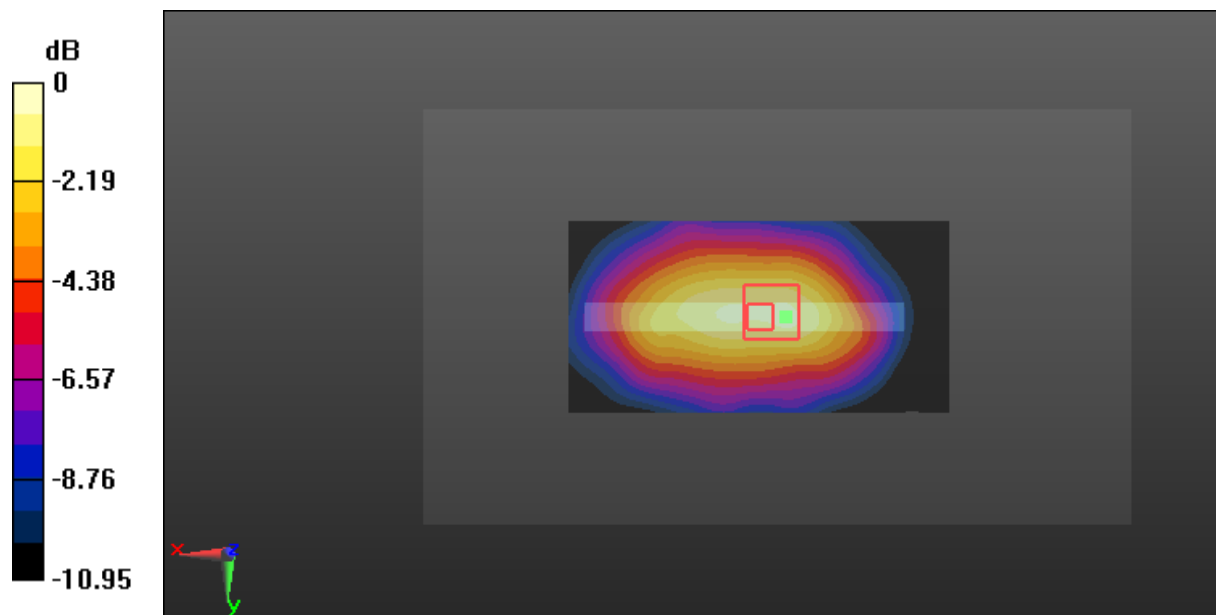
Zoom Scan (5x5x7)/Cube 0: Measurement grid: dx=8mm, dy=8mm, dz=5mm

Reference Value = 7.771 V/m; Power Drift = -0.28 dB

Peak SAR (extrapolated) = 0.0980 W/kg

SAR(1 g) = 0.064 W/kg; SAR(10 g) = 0.041 W/kg

Maximum value of SAR (measured) = 0.0871 W/kg



0 dB = 0.0871 W/kg = -10.60 dBW/kg

Test Plot 33#: WCDMA Band 5_Body Right_Middle

DUT: Mobile Phone; Type: Nitro 4s; Serial: 17031000220;

Communication System: Generic WCDMA; Frequency: 836.6 MHz; Duty Cycle: 1:1
 Medium parameters used: 836.6 MHz; $\sigma = 0.973$ S/m; $\epsilon_r = 55.341$; $\rho = 1000$ kg/m³ ;
 Phantom section: Right Section

DASY5 Configuration:

- Probe: EX3DV4 - SN7441; ConvF(9.85, 9.85, 9.85); Calibrated: 2016/11/15;
- Sensor-Surface: 1.4mm (Mechanical Surface Detection)
- Electronics: DAE3 Sn379; Calibrated: 2016/10/4
- Phantom: Triple Flat Phantom 5.1C; Type: QD 000 P51 CA; Serial: 1130
- Measurement SW: DASY52, Version 52.8 (8);

Area Scan (101x51x1): Interpolated grid: dx=1.500 mm, dy=1.500 mm

Maximum value of SAR (interpolated) = 0.161 W/kg

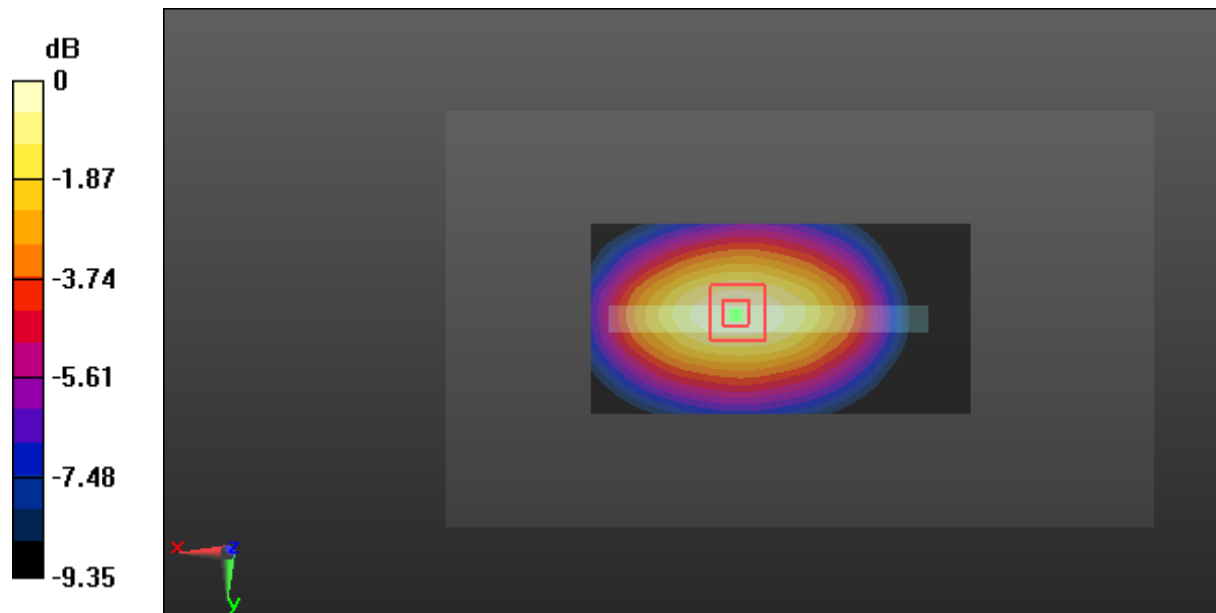
Zoom Scan (5x5x7)/Cube 0: Measurement grid: dx=8mm, dy=8mm, dz=5mm

Reference Value = 12.23 V/m; Power Drift = -0.04 dB

Peak SAR (extrapolated) = 0.181 W/kg

SAR(1 g) = 0.124 W/kg; SAR(10 g) = 0.086 W/kg

Maximum value of SAR (measured) = 0.162 W/kg



0 dB = 0.162 W/kg = -7.90 dBW/kg

Test Plot 34#: WCDMA Band 5_Body Bottom_Middle

DUT: Mobile Phone; Type: Nitro 4s; Serial: 17031000220;

Communication System: Generic WCDMA; Frequency: 836.6 MHz; Duty Cycle: 1:1
 Medium parameters used: 836.6 MHz; $\sigma = 0.973$ S/m; $\epsilon_r = 55.341$; $\rho = 1000$ kg/m³ ;
 Phantom section: Right Section

DASY5 Configuration:

- Probe: EX3DV4 - SN7441; ConvF(9.85, 9.85, 9.85); Calibrated: 2016/11/15;
- Sensor-Surface: 1.4mm (Mechanical Surface Detection)
- Electronics: DAE3 Sn379; Calibrated: 2016/10/4
- Phantom: Triple Flat Phantom 5.1C; Type: QD 000 P51 CA; Serial: 1130
- Measurement SW: DASY52, Version 52.8 (8);

Area Scan (61x71x1): Interpolated grid: dx=1.500 mm, dy=1.500 mm

Maximum value of SAR (interpolated) = 0.00479 W/kg

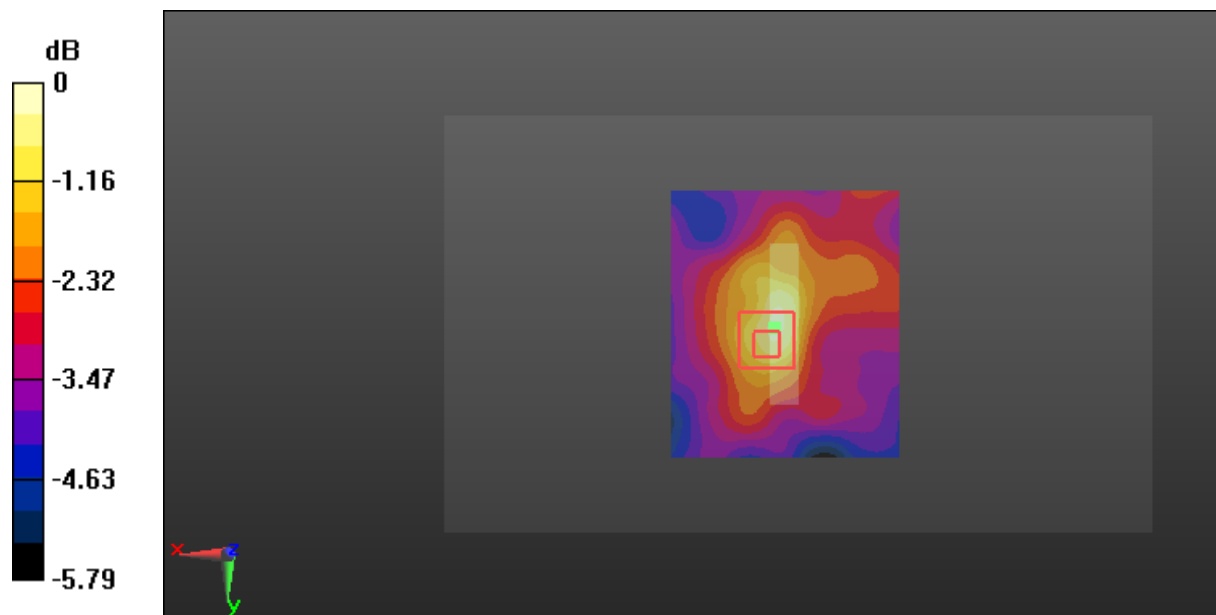
Zoom Scan (5x5x7)/Cube 0: Measurement grid: dx=8mm, dy=8mm, dz=5mm

Reference Value = 1.990 V/m; Power Drift = -0.14 dB

Peak SAR (extrapolated) = 0.00686 W/kg

SAR(1 g) = 0.00383 W/kg; SAR(10 g) = 0.00295 W/kg

Maximum value of SAR (measured) = 0.00508 W/kg



0 dB = 0.00508 W/kg = -22.94 dBW/kg