

**Test Plot 1#: GSM 850\_Head Flat\_Middle****DUT: Mobile Phone; Type: NEO Flip; Serial: 18121400720**

Communication System: Generic GSM; Frequency: 836.6 MHz; Duty Cycle: 1:8  
Medium parameters used:  $f = 836.6$  MHz;  $\sigma = 0.881$  S/m;  $\epsilon_r = 42.044$ ;  $\rho = 1000$  kg/m<sup>3</sup> ;  
Phantom section: Flat Section

DASY5 Configuration:

- Probe: EX3DV4 - SN7329; ConvF(10.01, 10.01, 10.01); Calibrated: 2018/9/30;
- Sensor-Surface: 1.4mm (Mechanical Surface Detection)
- Electronics: DAE4 Sn772; Calibrated: 2018/9/28
- Phantom: Triple Flat Phantom 5.1C; Type: QD 000 P51 CA; Serial: 1130
- Measurement SW: DASY52, Version 52.8 (8);

**Area Scan (121x51x1):** Interpolated grid: dx=1.500 mm, dy=1.500 mm

Maximum value of SAR (interpolated) = 0.112 W/kg

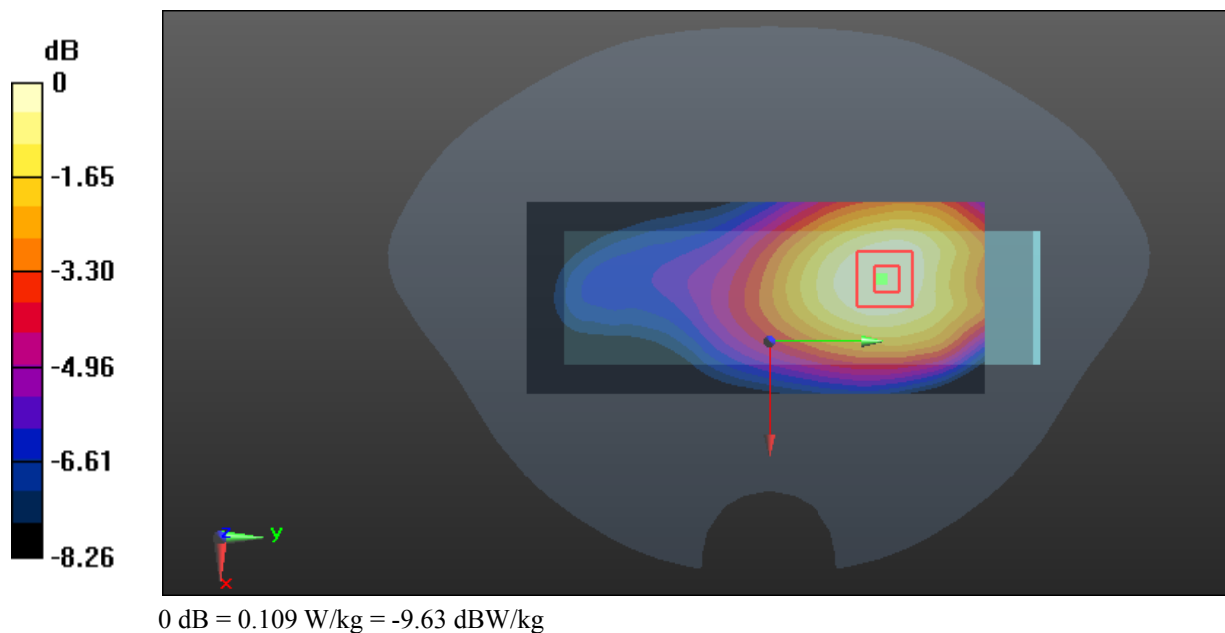
**Zoom Scan (5x5x7)/Cube 0:** Measurement grid: dx=8mm, dy=8mm, dz=5mm

Reference Value = 7.276 V/m; Power Drift = 0.03 dB

Peak SAR (extrapolated) = 0.121 W/kg

**SAR(1 g) = 0.089 W/kg; SAR(10 g) = 0.066 W/kg**

Maximum value of SAR (measured) = 0.109 W/kg



**Test Plot 2#: GSM 850\_Body Worn Back\_Middle****DUT: Mobile Phone; Type: NEO Flip; Serial: 18121400720**

Communication System: Generic GSM; Frequency: 836.6 MHz; Duty Cycle: 1:8  
Medium parameters used:  $f = 836.6$  MHz;  $\sigma = 0.963$  S/m;  $\epsilon_r = 56.863$ ;  $\rho = 1000$  kg/m<sup>3</sup> ;  
Phantom section: Right Section

DASY5 Configuration:

- Probe: EX3DV4 - SN7329; ConvF(10.23, 10.23, 10.23); Calibrated: 2018/9/30;
- Sensor-Surface: 1.4mm (Mechanical Surface Detection)
- Electronics: DAE4 Sn772; Calibrated: 2018/9/28
- Phantom: Triple Flat Phantom 5.1C; Type: QD 000 P51 CA; Serial: 1130
- Measurement SW: DASY52, Version 52.8 (8);

**Area Scan (81x51x1):** Interpolated grid: dx=1.500 mm, dy=1.500 mm

Maximum value of SAR (interpolated) = 1.64 W/kg

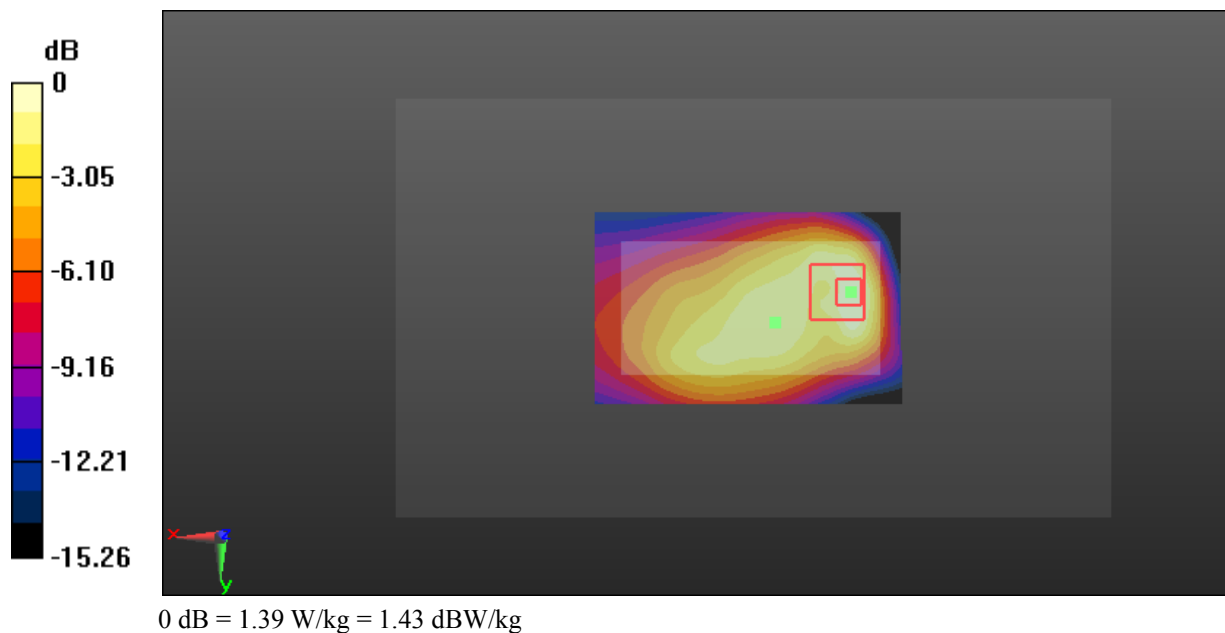
**Zoom Scan (5x5x7)/Cube 0:** Measurement grid: dx=8mm, dy=8mm, dz=5mm

Reference Value = 30.40 V/m; Power Drift = -0.19 dB

Peak SAR (extrapolated) = 1.88 W/kg

**SAR(1 g) = 0.773 W/kg; SAR(10 g) = 0.463 W/kg**

Maximum value of SAR (measured) = 1.39 W/kg



**Test Plot 3#: GSM 850\_Body Back\_Middle****DUT: Mobile Phone; Type: NEO Flip; Serial: 18121400720**

Communication System: Generic GPRS-3 slots; Frequency: 836.6 MHz; Duty Cycle: 1:2.66  
Medium parameters used:  $f = 836.6$  MHz;  $\sigma = 0.963$  S/m;  $\epsilon_r = 56.863$ ;  $\rho = 1000$  kg/m<sup>3</sup> ;  
Phantom section: Right Section

DASY5 Configuration:

- Probe: EX3DV4 - SN7329; ConvF(10.23, 10.23, 10.23); Calibrated: 2018/9/30;
- Sensor-Surface: 1.4mm (Mechanical Surface Detection)
- Electronics: DAE4 Sn772; Calibrated: 2018/9/28
- Phantom: Triple Flat Phantom 5.1C; Type: QD 000 P51 CA; Serial: 1130
- Measurement SW: DASY52, Version 52.8 (8);

**Area Scan (111x51x1):** Interpolated grid:  $dx=1.500$  mm,  $dy=1.500$  mm

Maximum value of SAR (interpolated) = 1.49 W/kg

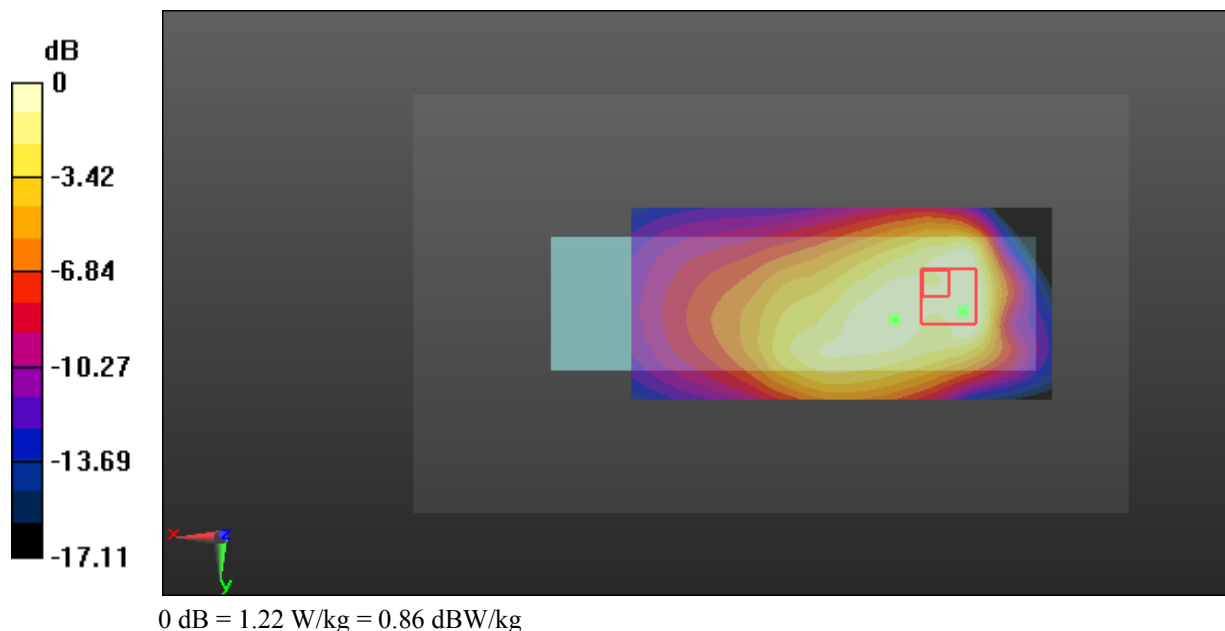
**Zoom Scan (5x5x7)/Cube 0:** Measurement grid:  $dx=8$ mm,  $dy=8$ mm,  $dz=5$ mm

Reference Value = 19.32 V/m; Power Drift = 0.03 dB

Peak SAR (extrapolated) = 1.78 W/kg

**SAR(1 g) = 0.727 W/kg; SAR(10 g) = 0.477 W/kg**

Maximum value of SAR (measured) = 1.22 W/kg



**Test Plot 4#: GSM 850\_Body Bottom\_Middle****DUT: Mobile Phone; Type: NEO Flip; Serial: 18121400720**

Communication System: Generic GPRS-3 slots; Frequency: 836.6 MHz; Duty Cycle: 1:2.66  
Medium parameters used:  $f = 836.6$  MHz;  $\sigma = 0.963$  S/m;  $\epsilon_r = 56.863$ ;  $\rho = 1000$  kg/m<sup>3</sup> ;  
Phantom section: Right Section

DASY5 Configuration:

- Probe: EX3DV4 - SN7329; ConvF(10.23, 10.23, 10.23); Calibrated: 2018/9/30;
- Sensor-Surface: 1.4mm (Mechanical Surface Detection)
- Electronics: DAE4 Sn772; Calibrated: 2018/9/28
- Phantom: Triple Flat Phantom 5.1C; Type: QD 000 P51 CA; Serial: 1130
- Measurement SW: DASY52, Version 52.8 (8);

**Area Scan (41x51x1):** Interpolated grid: dx=1.500 mm, dy=1.500 mm

Maximum value of SAR (interpolated) = 0.241 W/kg

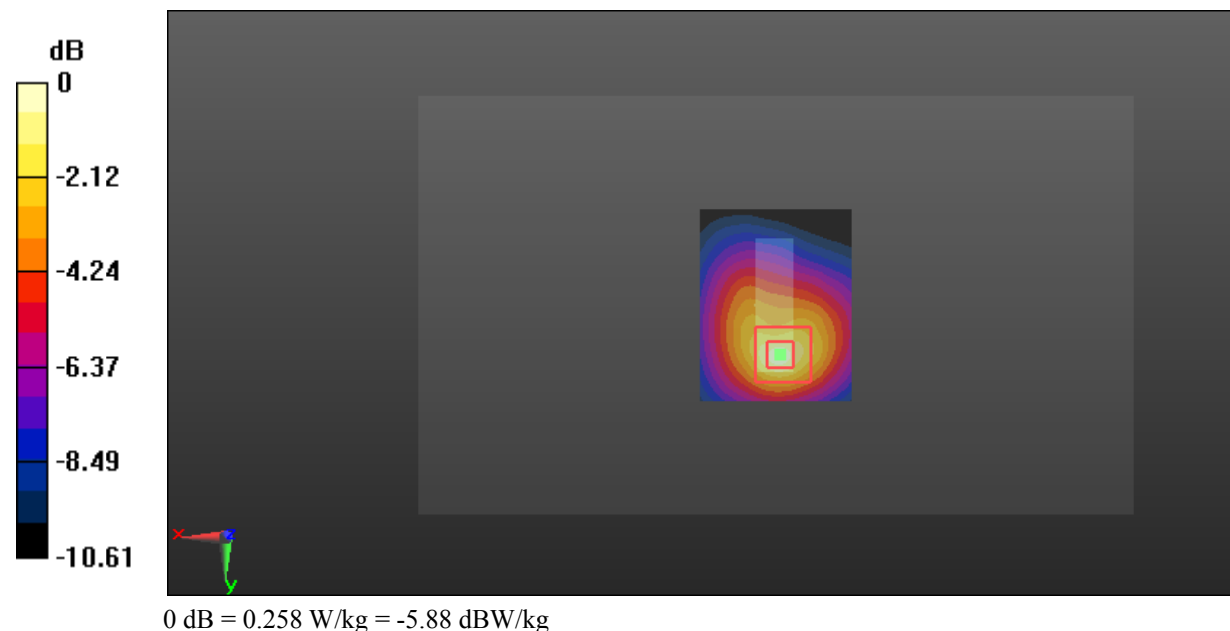
**Zoom Scan (5x5x7)/Cube 0:** Measurement grid: dx=8mm, dy=8mm, dz=5mm

Reference Value = 7.923 V/m; Power Drift = -0.14 dB

Peak SAR (extrapolated) = 0.326 W/kg

**SAR(1 g) = 0.154 W/kg; SAR(10 g) = 0.083 W/kg**

Maximum value of SAR (measured) = 0.258 W/kg



**Test Plot 5#: GSM 1900\_Head Flat\_Middle****DUT: Mobile Phone; Type: NEO Flip; Serial: 18121400720**

Communication System: Generic GSM; Frequency: 1880 MHz; Duty Cycle: 1:8  
 Medium parameters used:  $f = 1880$  MHz;  $\sigma = 1.366$  S/m;  $\epsilon_r = 40.359$ ;  $\rho = 1000$  kg/m<sup>3</sup> ;  
 Phantom section: Flat Section

DASY5 Configuration:

- Probe: EX3DV4 - SN7329; ConvF(8.1, 8.1, 8.1); Calibrated: 2018/9/30;
- Sensor-Surface: 1.4mm (Mechanical Surface Detection)
- Electronics: DAE4 Sn772; Calibrated: 2018/9/28
- Phantom: Triple Flat Phantom 5.1C; Type: QD 000 P51 CA; Serial: 1130
- Measurement SW: DASY52, Version 52.8 (8);

**Area Scan (121x51x1):** Interpolated grid: dx=1.500 mm, dy=1.500 mm

Maximum value of SAR (interpolated) = 0.0203 W/kg

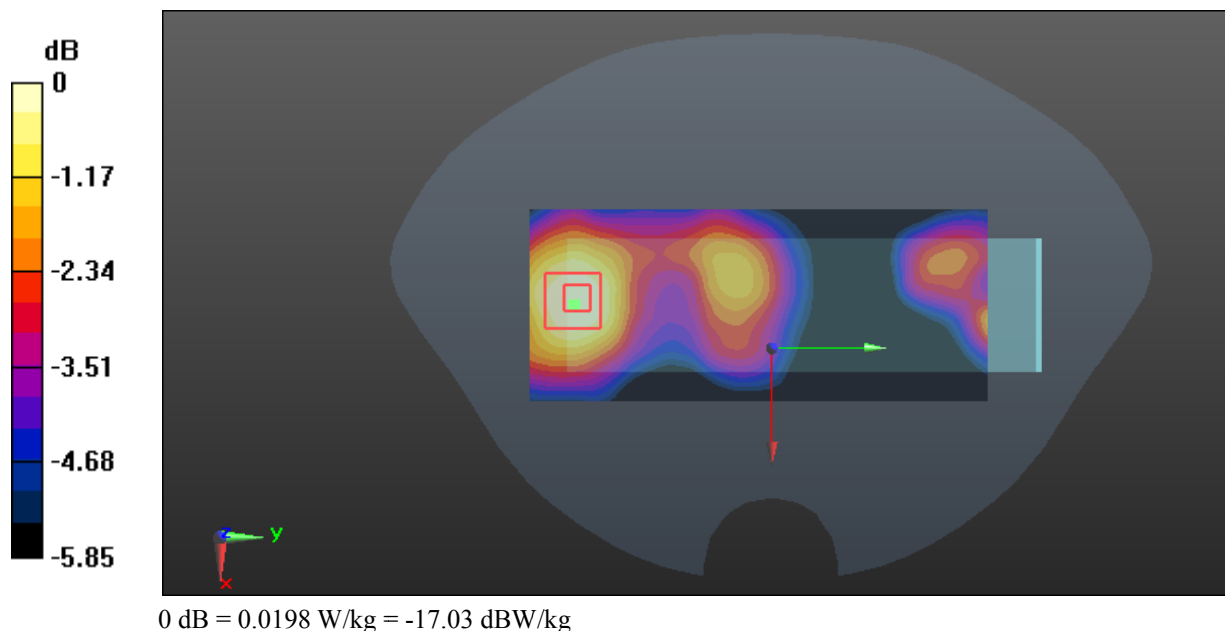
**Zoom Scan (5x5x7)/Cube 0:** Measurement grid: dx=8mm, dy=8mm, dz=5mm

Reference Value = 2.435 V/m; Power Drift = 0.07 dB

Peak SAR (extrapolated) = 0.0230 W/kg

**SAR(1 g) = 0.014 W/kg; SAR(10 g) = 0.00934 W/kg**

Maximum value of SAR (measured) = 0.0198 W/kg



**Test Plot 6#: GSM 1900\_Body Worn Back\_Middle****DUT: Mobile Phone; Type: NEO Flip; Serial: 18121400720**

Communication System: Generic GSM; Frequency: 1880 MHz; Duty Cycle: 1:8  
Medium parameters used:  $f = 1880$  MHz;  $\sigma = 1.489$  S/m;  $\epsilon_r = 54.141$ ;  $\rho = 1000$  kg/m<sup>3</sup> ;  
Phantom section: Left Section

DASY5 Configuration:

- Probe: EX3DV4 - SN7329; ConvF(7.7, 7.7, 7.7); Calibrated: 2018/9/30;
- Sensor-Surface: 1.4mm (Mechanical Surface Detection)
- Electronics: DAE4 Sn772; Calibrated: 2018/9/28
- Phantom: Triple Flat Phantom 5.1C; Type: QD 000 P51 CA; Serial: 1130
- Measurement SW: DASY52, Version 52.8 (8);

**Area Scan (81x51x1):** Interpolated grid: dx=1.500 mm, dy=1.500 mm

Maximum value of SAR (interpolated) = 0.908 W/kg

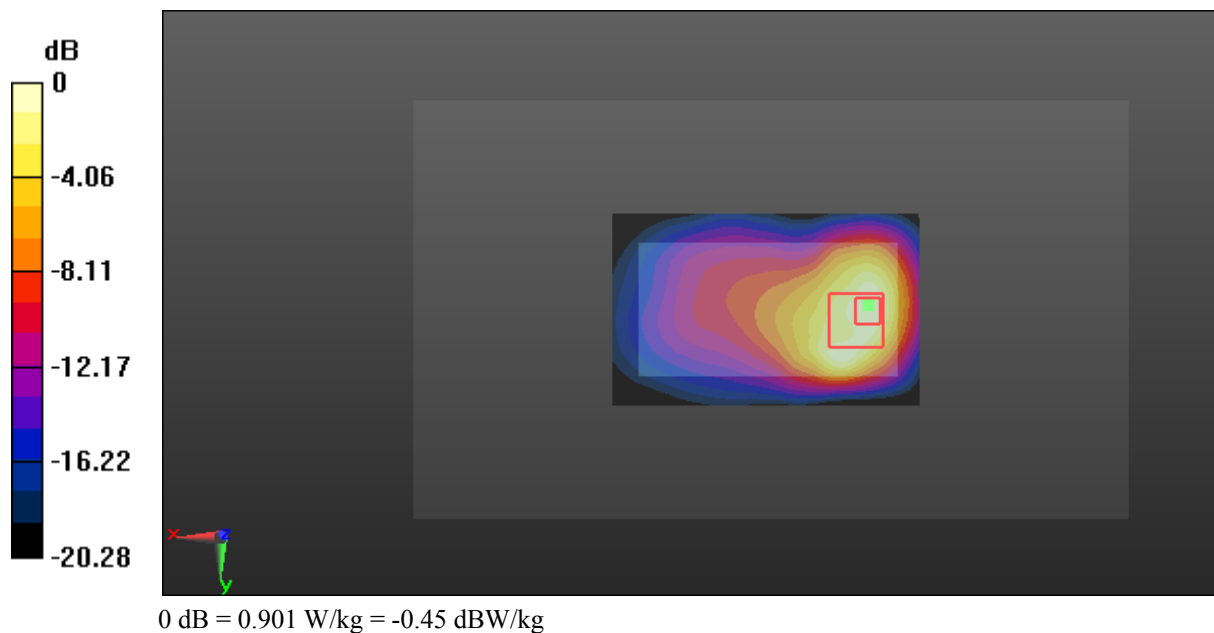
**Zoom Scan (6x6x7)/Cube 0:** Measurement grid: dx=8mm, dy=8mm, dz=5mm

Reference Value = 9.350 V/m; Power Drift = 0.07 dB

Peak SAR (extrapolated) = 1.09 W/kg

**SAR(1 g) = 0.550 W/kg; SAR(10 g) = 0.302 W/kg**

Maximum value of SAR (measured) = 0.901 W/kg



**Test Plot 7#: GSM 1900\_Body Back\_Low****DUT: Mobile Phone; Type: NEO Flip; Serial: 18121400720**

Communication System: Generic GPRS-3 slots; Frequency: 1850.2 MHz; Duty Cycle: 1:2.66  
Medium parameters used:  $f = 1850.2$  MHz;  $\sigma = 1.463$  S/m;  $\epsilon_r = 54.635$ ;  $\rho = 1000$  kg/m<sup>3</sup> ;  
Phantom section: Left Section

DASY5 Configuration:

- Probe: EX3DV4 - SN7329; ConvF(7.7, 7.7, 7.7); Calibrated: 2018/9/30;
- Sensor-Surface: 1.4mm (Mechanical Surface Detection)
- Electronics: DAE4 Sn772; Calibrated: 2018/9/28
- Phantom: Triple Flat Phantom 5.1C; Type: QD 000 P51 CA; Serial: 1130
- Measurement SW: DASY52, Version 52.8 (8);

**Area Scan (111x51x1):** Interpolated grid: dx=1.500 mm, dy=1.500 mm

Maximum value of SAR (interpolated) = 2.12 W/kg

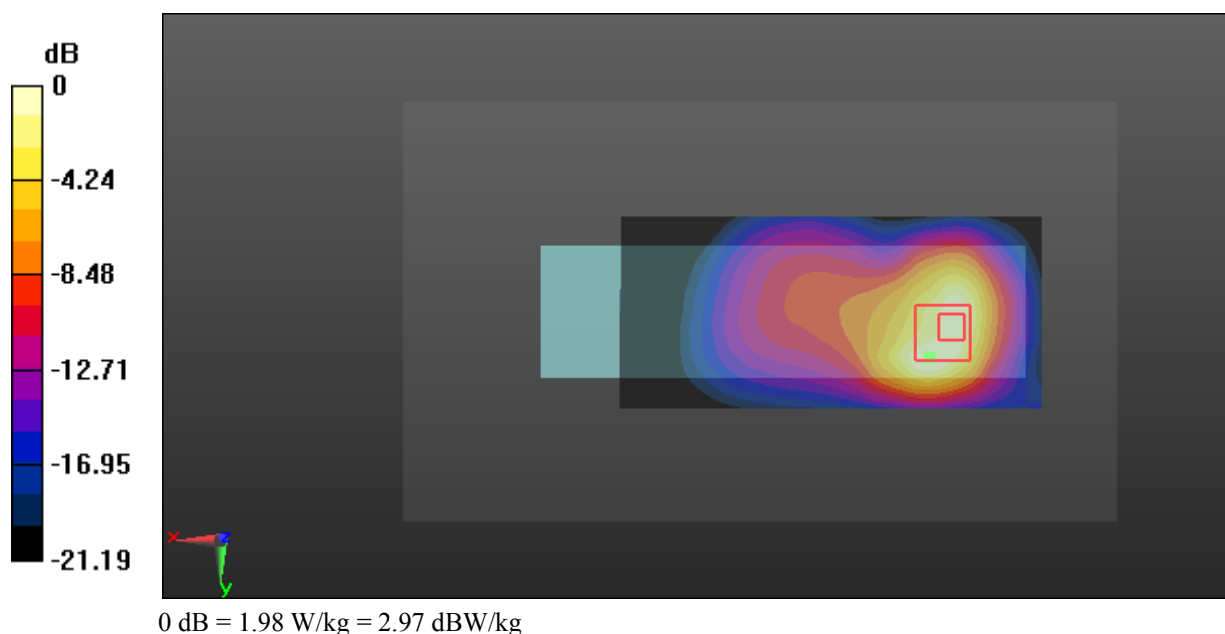
**Zoom Scan (6x6x7)/Cube 0:** Measurement grid: dx=8mm, dy=8mm, dz=5mm

Reference Value = 8.794 V/m; Power Drift = 0.15 dB

Peak SAR (extrapolated) = 2.40 W/kg

**SAR(1 g) = 1.29 W/kg; SAR(10 g) = 0.711 W/kg**

Maximum value of SAR (measured) = 1.98 W/kg



**Test Plot 8#: GSM 1900\_Body Back\_Middle****DUT: Mobile Phone; Type: NEO Flip; Serial: 18121400720**

Communication System: Generic GPRS-3 slots; Frequency: 1880 MHz; Duty Cycle: 1:2.66  
Medium parameters used:  $f = 1880$  MHz;  $\sigma = 1.489$  S/m;  $\epsilon_r = 54.141$ ;  $\rho = 1000$  kg/m<sup>3</sup> ;  
Phantom section: Left Section

DASY5 Configuration:

- Probe: EX3DV4 - SN7329; ConvF(7.7, 7.7, 7.7); Calibrated: 2018/9/30;
- Sensor-Surface: 1.4mm (Mechanical Surface Detection)
- Electronics: DAE4 Sn772; Calibrated: 2018/9/28
- Phantom: Triple Flat Phantom 5.1C; Type: QD 000 P51 CA; Serial: 1130
- Measurement SW: DASY52, Version 52.8 (8);

**Area Scan (111x51x1):** Interpolated grid: dx=1.500 mm, dy=1.500 mm

Maximum value of SAR (interpolated) = 1.93 W/kg

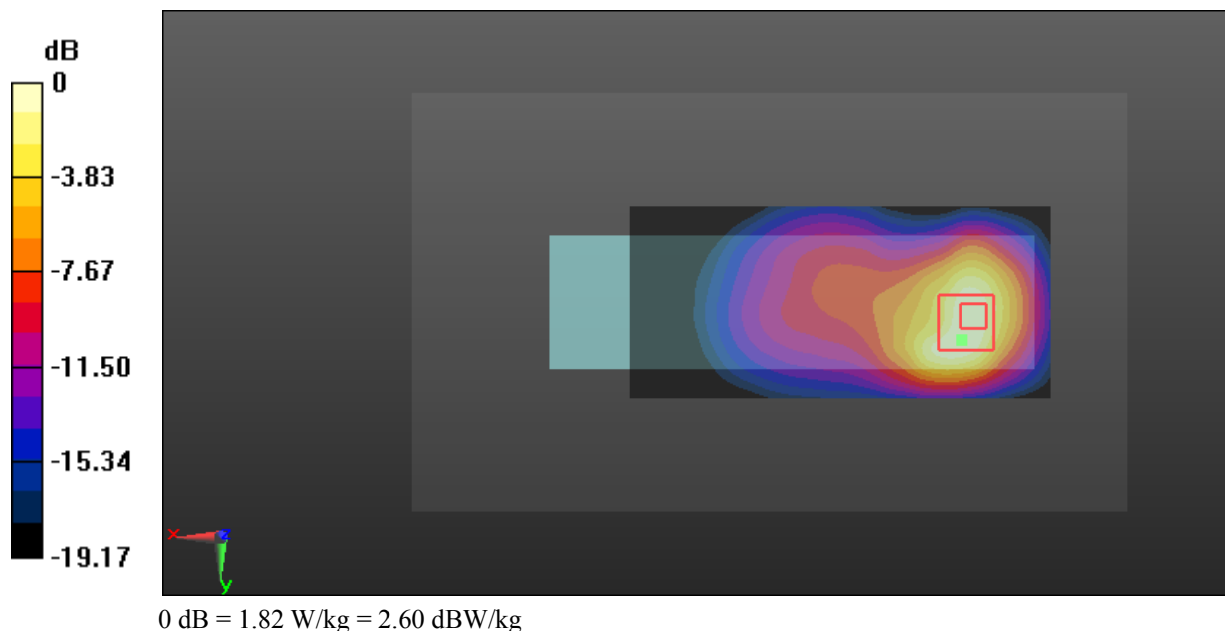
**Zoom Scan (5x6x7)/Cube 0:** Measurement grid: dx=8mm, dy=8mm, dz=5mm

Reference Value = 8.673 V/m; Power Drift = 0.11 dB

Peak SAR (extrapolated) = 2.37 W/kg

**SAR(1 g) = 1.26 W/kg; SAR(10 g) = 0.691 W/kg**

Maximum value of SAR (measured) = 1.82 W/kg





**Test Plot 9#: GSM 1900\_Body Back\_High****DUT: Mobile Phone; Type: NEO Flip; Serial: 18121400720**

Communication System: Generic GPRS-3 slots; Frequency: 1909.8 MHz; Duty Cycle: 1:2.66  
Medium parameters used:  $f = 1909.8$  MHz;  $\sigma = 1.517$  S/m;  $\epsilon_r = 54.065$ ;  $\rho = 1000$  kg/m<sup>3</sup> ;  
Phantom section: Left Section

DASY5 Configuration:

- Probe: EX3DV4 - SN7329; ConvF(7.7, 7.7, 7.7); Calibrated: 2018/9/30;
- Sensor-Surface: 1.4mm (Mechanical Surface Detection)
- Electronics: DAE4 Sn772; Calibrated: 2018/9/28
- Phantom: Triple Flat Phantom 5.1C; Type: QD 000 P51 CA; Serial: 1130
- Measurement SW: DASY52, Version 52.8 (8);

**Area Scan (111x51x1):** Interpolated grid:  $dx=1.500$  mm,  $dy=1.500$  mm

Maximum value of SAR (interpolated) = 2.09 W/kg

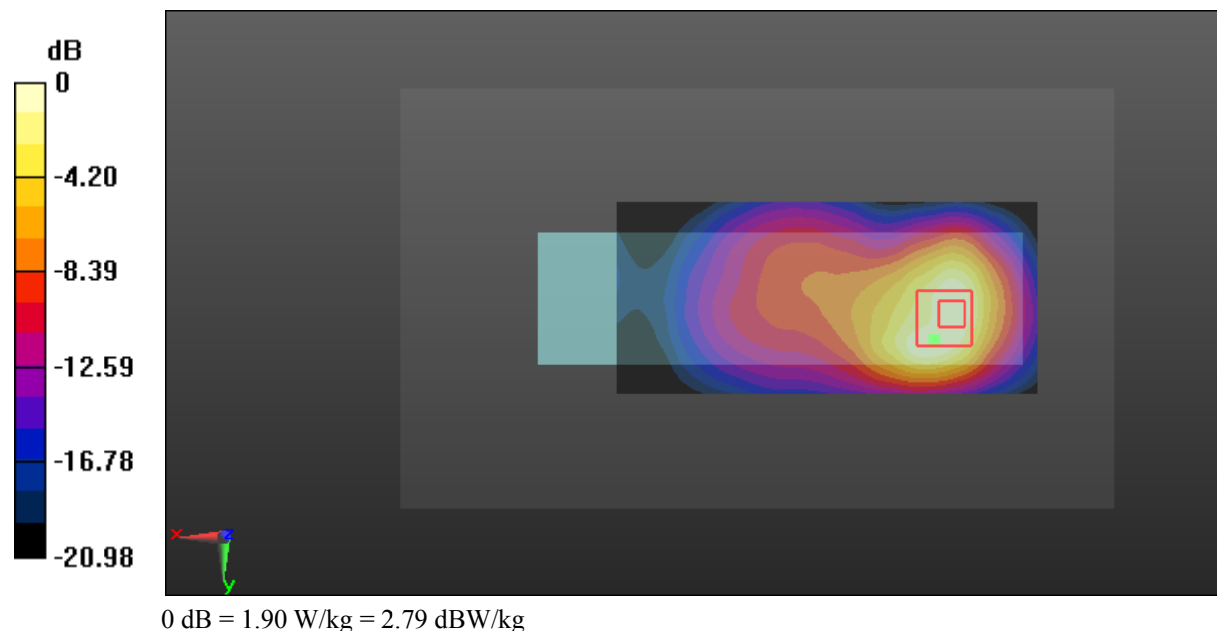
**Zoom Scan (6x6x7)/Cube 0:** Measurement grid:  $dx=8$ mm,  $dy=8$ mm,  $dz=5$ mm

Reference Value = 9.941 V/m; Power Drift = 0.09 dB

Peak SAR (extrapolated) = 2.33 W/kg

**SAR(1 g) = 1.25 W/kg; SAR(10 g) = 0.691 W/kg**

Maximum value of SAR (measured) = 1.90 W/kg



**Test Plot 10#: GSM 1900\_Body Bottom\_Middle****DUT: Mobile Phone; Type: NEO Flip; Serial: 18121400720**

Communication System: Generic GPRS-3 slots; Frequency: 1880 MHz; Duty Cycle: 1:2.66  
Medium parameters used:  $f = 1880$  MHz;  $\sigma = 1.489$  S/m;  $\epsilon_r = 54.141$ ;  $\rho = 1000$  kg/m<sup>3</sup> ;  
Phantom section: Left Section

DASY5 Configuration:

- Probe: EX3DV4 - SN7329; ConvF(7.7, 7.7, 7.7); Calibrated: 2018/9/30;
- Sensor-Surface: 1.4mm (Mechanical Surface Detection)
- Electronics: DAE4 Sn772; Calibrated: 2018/9/28
- Phantom: Triple Flat Phantom 5.1C; Type: QD 000 P51 CA; Serial: 1130
- Measurement SW: DASY52, Version 52.8 (8);

**Area Scan (41x51x1):** Interpolated grid: dx=1.500 mm, dy=1.500 mm

Maximum value of SAR (interpolated) = 0.735 W/kg

**Zoom Scan (5x5x7)/Cube 0:** Measurement grid: dx=8mm, dy=8mm, dz=5mm

Reference Value = 17.69 V/m; Power Drift = -0.14 dB

Peak SAR (extrapolated) = 0.847 W/kg

**SAR(1 g) = 0.463 W/kg; SAR(10 g) = 0.244 W/kg**

Maximum value of SAR (measured) = 0.711 W/kg

