

DUT: Tablet; Type: Astro Phablet 7s;

Communication System: GSM bands; Frequency: 836.6 MHz; Duty Cycle: 1:8

Medium parameters used: $f = 836.6$ MHz; $\sigma = 0.89$ mho/m; $\epsilon_r = 42.04$; $\rho = 1000$ kg/m³

Phantom section: Flat Section

DASY4 Configuration:

- Probe: EX3DV4 – SN7382; ConvF(10.50, 10.50, 10.50); Calibrated: 26/10/2016
- Sensor-Surface: 4mm (Mechanical Surface Detection)
- Electronics: DAE – SN772; Calibrated: 25/10/2016
- Phantom: TWIN SAM; Type: Twin SAM V5.0; Serial: 1909
- Measurement SW: DASY4, V4.5 Build 19; Postprocessing SW: SEMCAD, V1.8 Build 145

Head cheek/GSM 850 Mid/Area Scan (81x101x1): Measurement grid: dx=15mm, dy=15mm

Maximum value of SAR (interpolated) = 0.129 mW/g

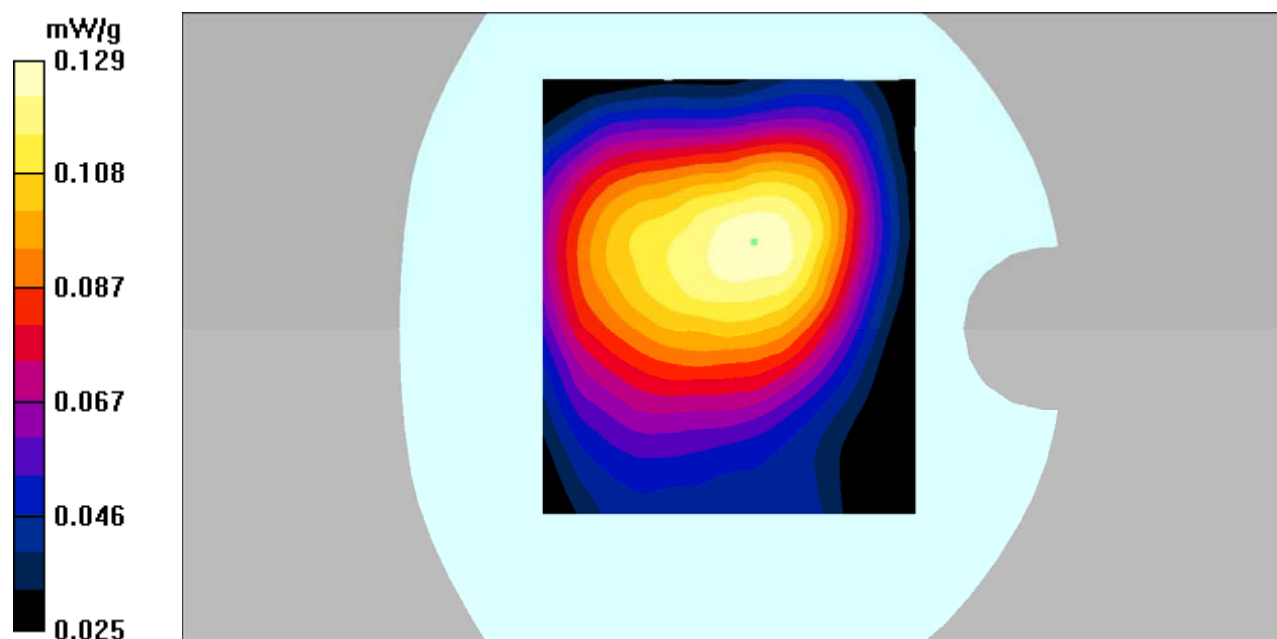
Head cheek/GSM 850 Mid/Zoom Scan (7x7x7)/Cube 0: Measurement grid: dx=5mm, dy=5mm, dz=5mm

Reference Value = 10.9 V/m; Power Drift = 0.079 dB

Peak SAR (extrapolated) = 0.152 W/kg

SAR(1 g) = 0.123 mW/g; SAR(10 g) = 0.096 mW/g

Maximum value of SAR (measured) = 0.129 mW/g



DUT: Tablet; Type: Astro Phablet 7s;

Communication System: GSM bands; Frequency: 836.6 MHz; Duty Cycle: 1:8

Medium parameters used: $f = 836.6$ MHz; $\sigma = 0.95$ mho/m; $\epsilon_r = 55.47$; $\rho = 1000$ kg/m³

Phantom section: Flat Section

DASY4 Configuration:

- Probe: EX3DV4 – SN7382; ConvF(10.54, 10.54, 10.54); Calibrated: 26/10/2016
- Sensor-Surface: 4mm (Mechanical Surface Detection)
- Electronics: DAE – SN772; Calibrated: 25/10/2016
- Phantom: TWIN SAM; Type: Twin SAM V5.0; Serial: 1909
- Measurement SW: DASY4, V4.5 Build 19; Postprocessing SW: SEMCAD, V1.8 Build 145

Body worn/GSM 850 Mid/Area Scan (121x141x1): Measurement grid: dx=10mm, dy=10mm

Maximum value of SAR (interpolated) = 0.517 mW/g

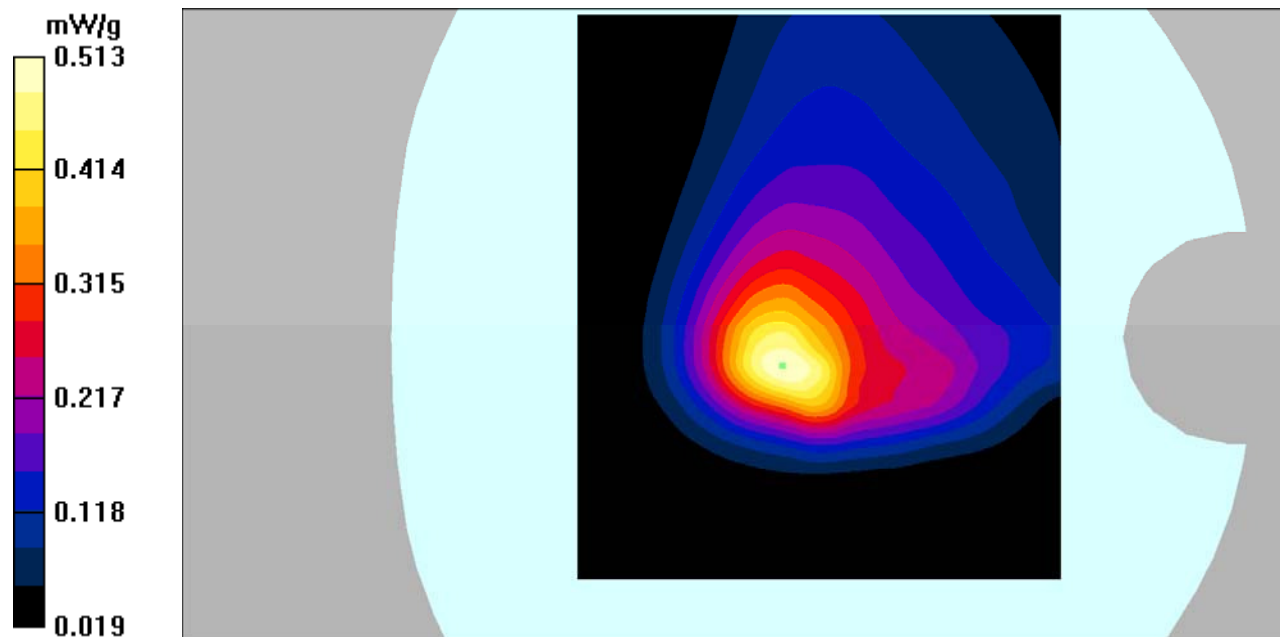
Body worn/GSM 850 Mid/Zoom Scan (7x7x7)/Cube 0: Measurement grid: dx=5mm, dy=5mm, dz=5mm

Reference Value = 19.6 V/m; Power Drift = 0.034 dB

Peak SAR (extrapolated) = 0.796 W/kg

SAR(1 g) = 0.464 mW/g; SAR(10 g) = 0.277 mW/g

Maximum value of SAR (measured) = 0.513 mW/g



DUT: Tablet; Type: Astro Phablet 7s;

Communication System: GPRS bands-3slots; Frequency: 836.6 MHz; Duty Cycle: 1:2.67
Medium parameters used: $f = 836.6$ MHz; $\sigma = 0.95$ mho/m; $\epsilon_r = 55.47$; $\rho = 1000$ kg/m³
Phantom section: Flat Section

DASY4 Configuration:

- Probe: EX3DV4 – SN7382; ConvF(10.54, 10.54, 10.54); Calibrated: 26/10/2016
- Sensor-Surface: 4mm (Mechanical Surface Detection)
- Electronics: DAE – SN772; Calibrated: 25/10/2016
- Phantom: TWIN SAM; Type: Twin SAM V5.0; Serial: 1909
- Measurement SW: DASY4, V4.5 Build 19; Postprocessing SW: SEMCAD, V1.8 Build 145

Body Back/GPRS 850 Mid/Area Scan (121x131x1): Measurement grid: dx=10mm, dy=10mm

Maximum value of SAR (interpolated) = 0.791 mW/g

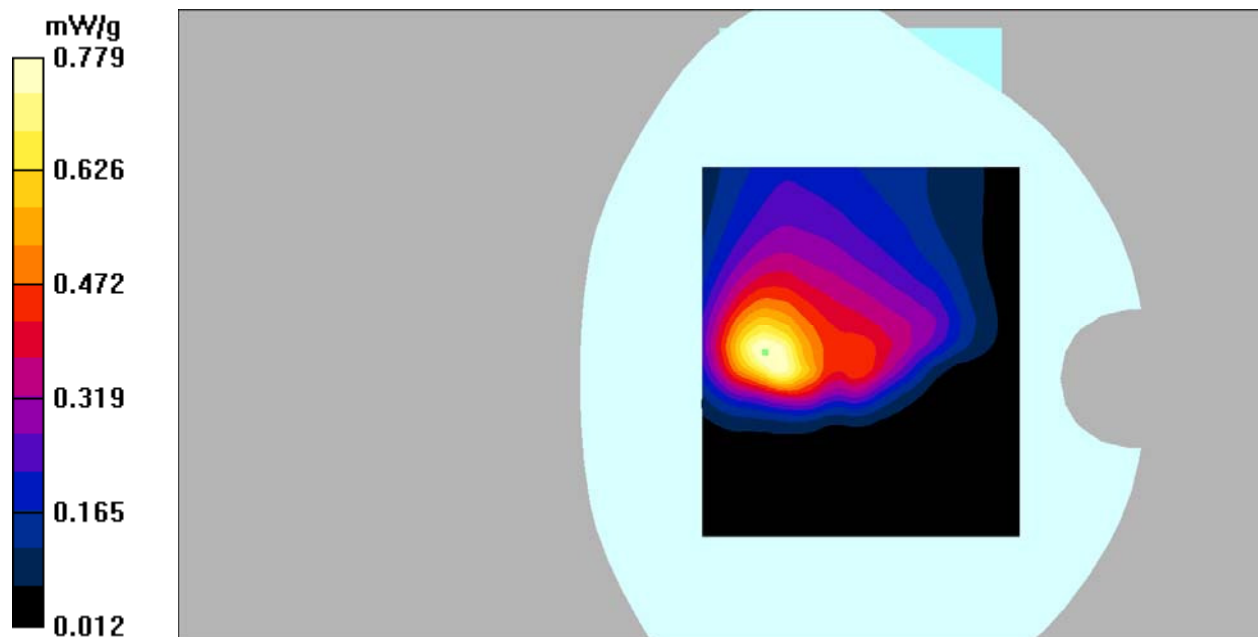
Body Back/GPRS 850 Mid/Zoom Scan (7x7x7)/Cube 0: Measurement grid: dx=5mm, dy=5mm, dz=5mm

Reference Value = 21.7 V/m; Power Drift = -0.07 dB

Peak SAR (extrapolated) = 1.17 W/kg

SAR(1 g) = 0.760 mW/g; SAR(10 g) = 0.455 mW/g

Maximum value of SAR (measured) = 0.779 mW/g



DUT: Tablet; Type: Astro Phablet 7s;

Communication System: GPRS bands-3slots; Frequency: 836.6 MHz; Duty Cycle: 1:2.67
Medium parameters used: $f = 836.6$ MHz; $\sigma = 0.95$ mho/m; $\epsilon_r = 55.47$; $\rho = 1000$ kg/m³
Phantom section: Flat Section

DASY4 Configuration:

- Probe: EX3DV4 – SN7382; ConvF(10.54, 10.54, 10.54); Calibrated: 26/10/2016
- Sensor-Surface: 4mm (Mechanical Surface Detection)
- Electronics: DAE – SN772; Calibrated: 25/10/2016
- Phantom: TWIN SAM; Type: Twin SAM V5.0; Serial: 1909
- Measurement SW: DASY4, V4.5 Build 19; Postprocessing SW: SEMCAD, V1.8 Build 145

Body Right/GPRS 850 Mid/Area Scan (61x121x1): Measurement grid: dx=15mm, dy=15mm

Maximum value of SAR (interpolated) = 0.222 mW/g

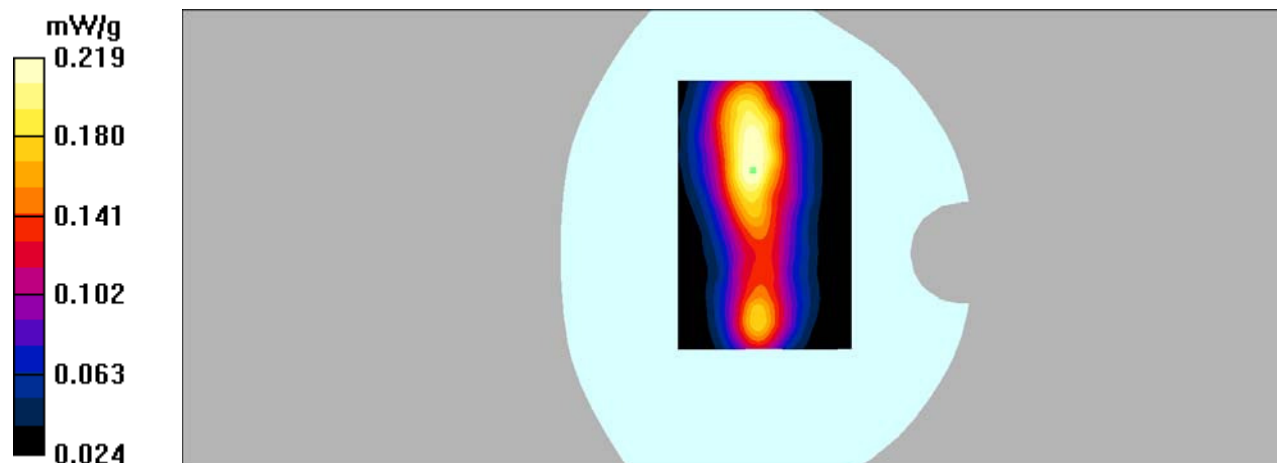
Body Right/GPRS 850 Mid/Zoom Scan (7x7x7)/Cube 0: Measurement grid: dx=5mm, dy=5mm, dz=5mm

Reference Value = 11.9 V/m; Power Drift = 0.056 dB

Peak SAR (extrapolated) = 0.302 W/kg

SAR(1 g) = 0.202 mW/g; SAR(10 g) = 0.137 mW/g

Maximum value of SAR (measured) = 0.219 mW/g



DUT: Tablet; Type: Astro Phablet 7s;

Communication System: GPRS bands-3slots; Frequency: 836.6 MHz;Duty Cycle: 1:2.67
Medium parameters used: $f = 836.6$ MHz; $\sigma = 0.95$ mho/m; $\epsilon_r = 55.47$; $\rho = 1000$ kg/m³
Phantom section: Flat Section

DASY4 Configuration:

- Probe: EX3DV4 – SN7382; ConvF(10.54, 10.54, 10.54); Calibrated: 26/10/2016
- Sensor-Surface: 4mm (Mechanical Surface Detection)
- Electronics: DAE – SN772; Calibrated: 25/10/2016
- Phantom: TWIN SAM; Type: Twin SAM V5.0; Serial: 1909
- Measurement SW: DASY4, V4.5 Build 19; Postprocessing SW: SEMCAD, V1.8 Build 145

Body Bottom/GPRS 850 Mid/Area Scan (81x91x1): Measurement grid: dx=15mm,
dy=15mm

Maximum value of SAR (interpolated) = 0.110 mW/g

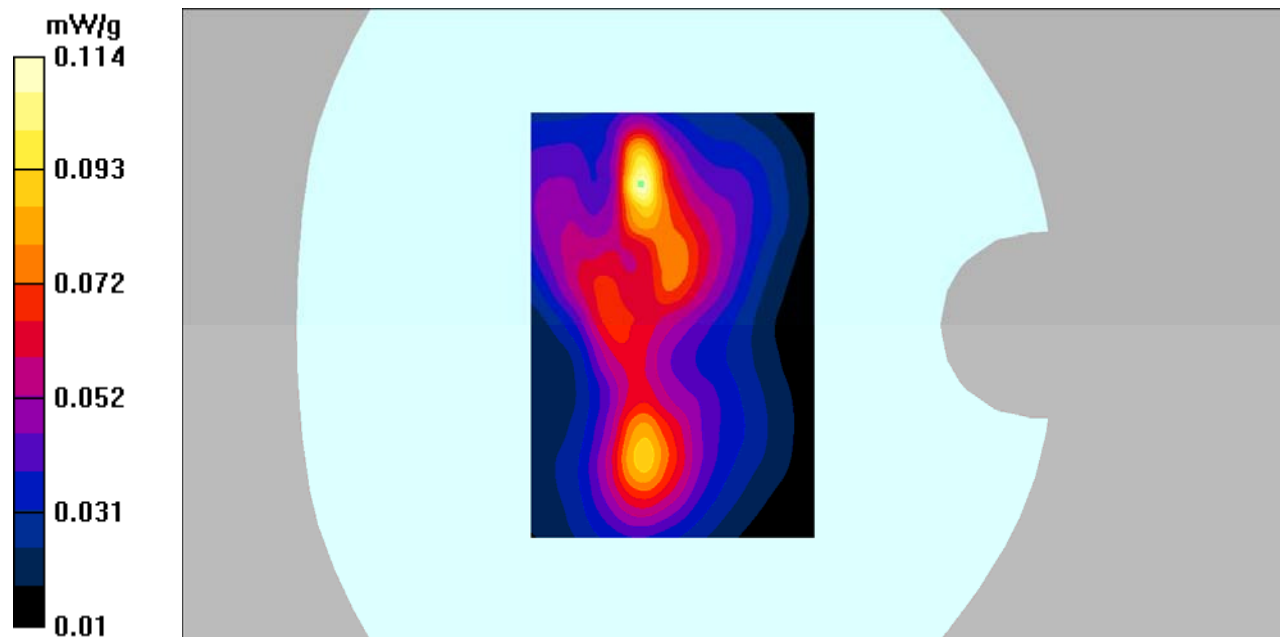
Body Bottom/GPRS 850 Mid/Zoom Scan (7x7x7)/Cube 0: Measurement grid: dx=5mm,
dy=5mm, dz=5mm

Reference Value = 7.43 V/m; Power Drift = 0.112 dB

Peak SAR (extrapolated) = 0.343 W/kg

SAR(1 g) = 0.105 mW/g; SAR(10 g) = 0.048 mW/g

Maximum value of SAR (measured) = 0.114 mW/g



DUT: Tablet; Type: Astro Phablet 7s;

Communication System: GSM bands; Frequency: 1880.0 MHz; Duty Cycle: 1:8

Medium parameters used: $f = 1880.0$ MHz; $\sigma = 1.36$ mho/m; $\epsilon_r = 40.10$; $\rho = 1000$ kg/m³

Phantom section: Flat Section

DASY4 Configuration:

- Probe: EX3DV4 – SN7382; ConvF(8.71, 8.71, 8.71); Calibrated: 26/10/2016
- Sensor-Surface: 4mm (Mechanical Surface Detection)
- Electronics: DAE – SN772; Calibrated: 25/10/2016
- Phantom: TWIN SAM; Type: Twin SAM V5.0; Serial: 1909
- Measurement SW: DASY4, V4.5 Build 19; Postprocessing SW: SEMCAD, V1.8 Build 145

Head cheek/GSM 1900 Mid/Area Scan (81x101x1): Measurement grid: dx=15mm, dy=15mm

Maximum value of SAR (interpolated) = 0.035 mW/g

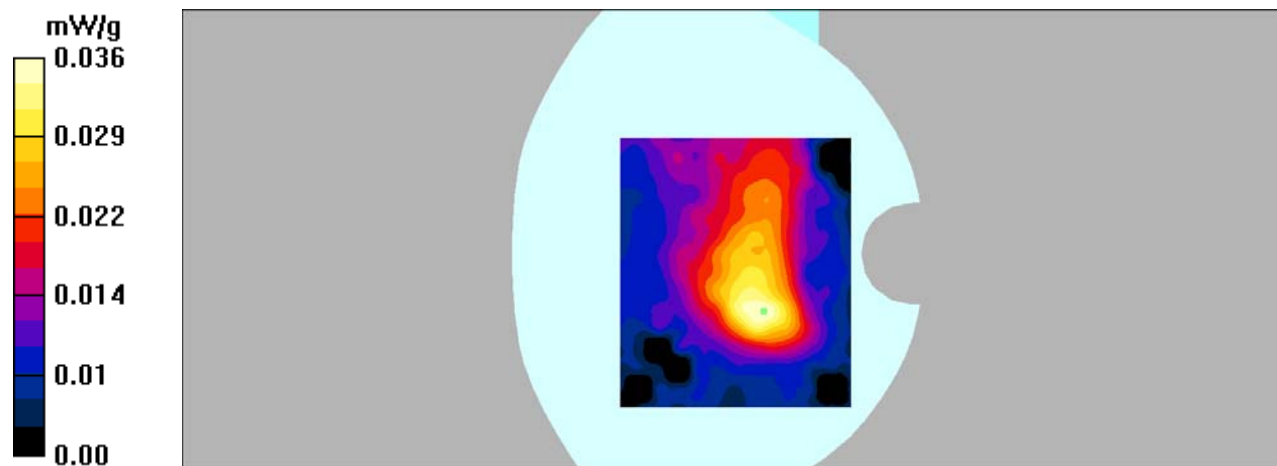
Head cheek/GSM 1900 Mid/Zoom Scan (7x7x7)/Cube 0: Measurement grid: dx=5mm, dy=5mm, dz=5mm

Reference Value = 4.16 V/m; Power Drift = -0.057 dB

Peak SAR (extrapolated) = 0.060 W/kg

SAR(1 g) = 0.033 mW/g; SAR(10 g) = 0.019 mW/g

Maximum value of SAR (measured) = 0.036 mW/g



DUT: Tablet; Type: Astro Phablet 7s;

Communication System: GSM bands; Frequency: 1880.0 MHz; Duty Cycle: 1:8

Medium parameters used: $f = 1880.0$ MHz; $\sigma = 1.55$ mho/m; $\epsilon_r = 53.72$; $\rho = 1000$ kg/m³

Phantom section: Flat Section

DASY4 Configuration:

- Probe: EX3DV4 – SN7382; ConvF(8.31, 8.31, 8.31); Calibrated: 26/10/2016
- Sensor-Surface: 4mm (Mechanical Surface Detection)
- Electronics: DAE – SN772; Calibrated: 25/10/2016
- Phantom: TWIN SAM; Type: Twin SAM V5.0; Serial: 1909
- Measurement SW: DASY4, V4.5 Build 19; Postprocessing SW: SEMCAD, V1.8 Build 145

Body Worn/GSM 1900 Mid/Area Scan (121x141x1): Measurement grid: dx=10mm, dy=10mm

Maximum value of SAR (interpolated) = 0.669 mW/g

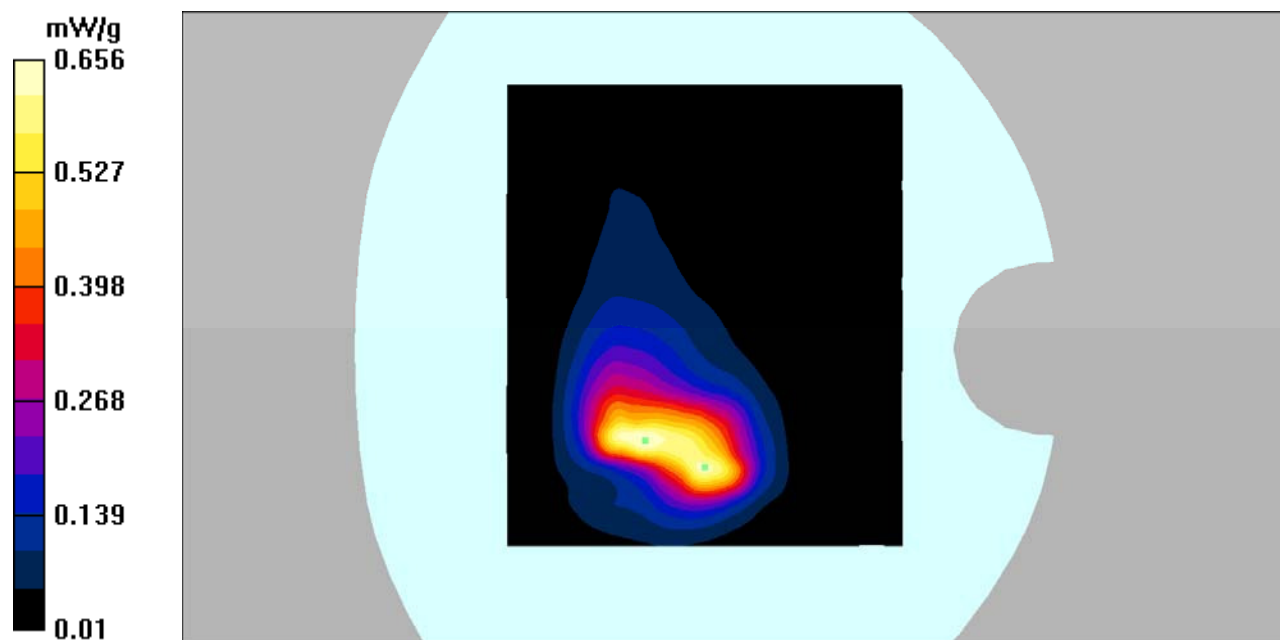
Body Worn/GSM 1900 Mid/Zoom Scan (7x7x7)/Cube 0: Measurement grid: dx=5mm, dy=5mm, dz=5mm

Reference Value = 7.58 V/m; Power Drift = 0.025 dB

Peak SAR (extrapolated) = 1.38 W/kg

SAR(1 g) = 0.570 mW/g; SAR(10 g) = 0.300 mW/g

Maximum value of SAR (measured) = 0.656 mW/g



DUT: Tablet; Type: Astro Phablet 7s;

Communication System: GPRS bands-3slots; Frequency: 1880.0 MHz;Duty Cycle: 1:2.67
Medium parameters used: $f = 1880.0$ MHz; $\sigma = 1.55$ mho/m; $\epsilon_r = 53.72$; $\rho = 1000$ kg/m³
Phantom section: Flat Section

DASY4 Configuration:

- Probe: EX3DV4 – SN7382; ConvF(8.31, 8.31, 8.31); Calibrated: 26/10/2016
- Sensor-Surface: 4mm (Mechanical Surface Detection)
- Electronics: DAE – SN772; Calibrated: 25/10/2016
- Phantom: TWIN SAM; Type: Twin SAM V5.0; Serial: 1909
- Measurement SW: DASY4, V4.5 Build 19; Postprocessing SW: SEMCAD, V1.8 Build 145

Body Back/GPRS 1900 Mid/Area Scan (121x141x1): Measurement grid: dx=10mm, dy=10mm

Maximum value of SAR (interpolated) = 0.693 mW/g

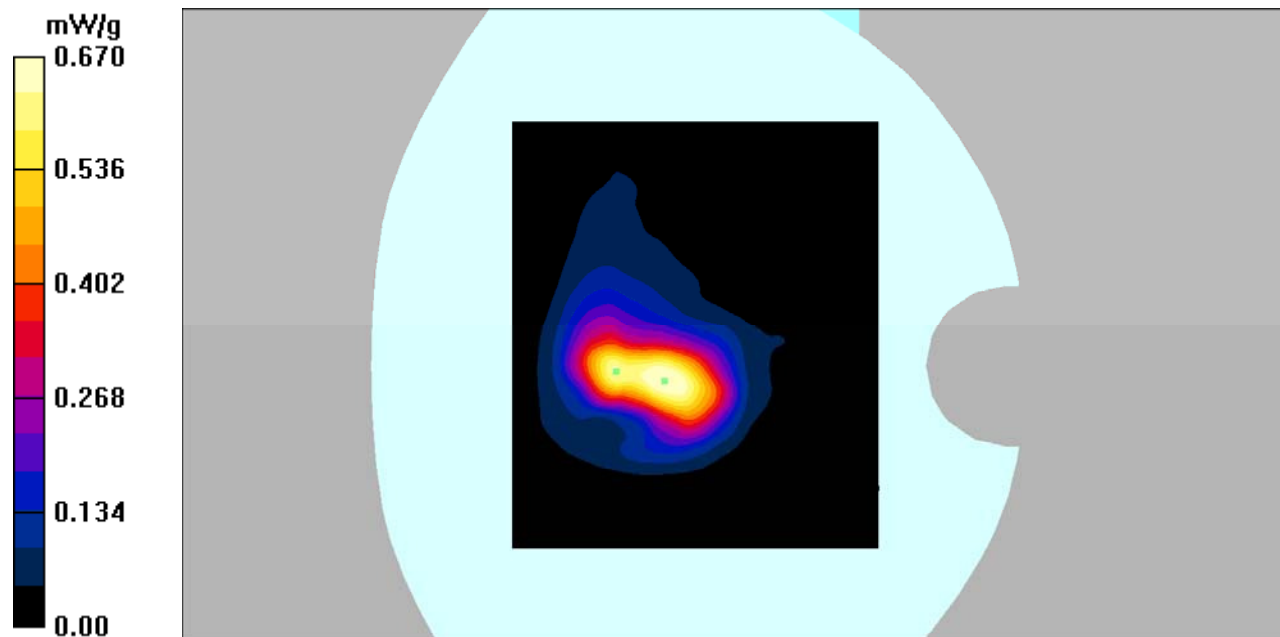
Body Back/GPRS 1900 Mid/Zoom Scan (7x7x7)/Cube 0: Measurement grid: dx=5mm, dy=5mm, dz=5mm

Reference Value = 17.2 V/m; Power Drift = 0.107 dB

Peak SAR (extrapolated) = 1.55 W/kg

SAR(1 g) = 0.606 mW/g; SAR(10 g) = 0.314 mW/g

Maximum value of SAR (measured) = 0.670 mW/g



DUT: Tablet; Type: Astro Phablet 7s;

Communication System: GPRS bands-3slots; Frequency: 1880.0 MHz;Duty Cycle: 1:2.67
Medium parameters used: $f = 1880.0$ MHz; $\sigma = 1.55$ mho/m; $\epsilon_r = 53.72$; $\rho = 1000$ kg/m³
Phantom section: Flat Section

DASY4 Configuration:

- Probe: EX3DV4 – SN7382; ConvF(8.31, 8.31, 8.31); Calibrated: 26/10/2016
- Sensor-Surface: 4mm (Mechanical Surface Detection)
- Electronics: DAE – SN772; Calibrated: 25/10/2016
- Phantom: TWIN SAM; Type: Twin SAM V5.0; Serial: 1909
- Measurement SW: DASY4, V4.5 Build 19; Postprocessing SW: SEMCAD, V1.8 Build 145

Body Right/GPRS 1900 Mid/Area Scan (121x141x1): Measurement grid: dx=10mm, dy=10mm

Maximum value of SAR (interpolated) = 0.021 mW/g

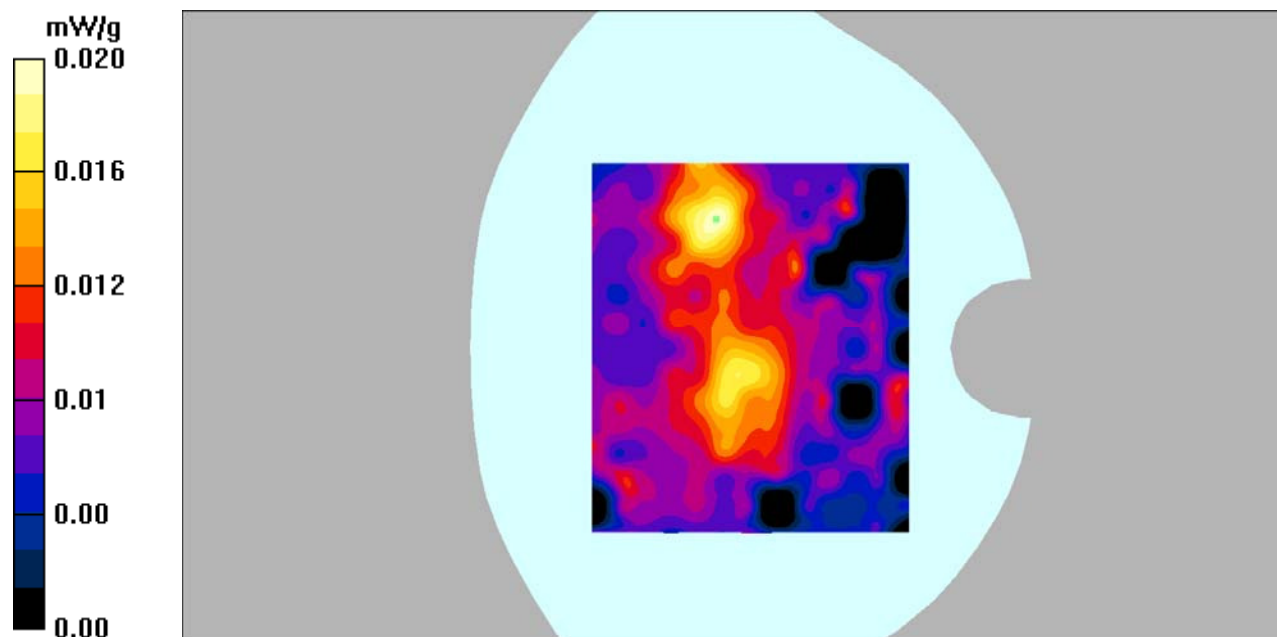
Body Right/GPRS 1900 Mid/Zoom Scan (7x7x7)/Cube 0: Measurement grid: dx=5mm, dy=5mm, dz=5mm

Reference Value = 3.10 V/m; Power Drift = 0.034 dB

Peak SAR (extrapolated) = 0.059 W/kg

SAR(1 g) = 0.019 mW/g; SAR(10 g) = 0.012 mW/g

Maximum value of SAR (measured) = 0.020 mW/g



DUT: Tablet; Type: Astro Phablet 7s;

Communication System: GPRS bands-3slots; Frequency: 1880.0 MHz;Duty Cycle: 1:2.67
Medium parameters used: $f = 1880.0$ MHz; $\sigma = 1.55$ mho/m; $\epsilon_r = 53.72$; $\rho = 1000$ kg/m³
Phantom section: Flat Section

DASY4 Configuration:

- Probe: EX3DV4 – SN7382; ConvF(8.31, 8.31, 8.31); Calibrated: 26/10/2016
- Sensor-Surface: 4mm (Mechanical Surface Detection)
- Electronics: DAE – SN772; Calibrated: 25/10/2016
- Phantom: TWIN SAM; Type: Twin SAM V5.0; Serial: 1909
- Measurement SW: DASY4, V4.5 Build 19; Postprocessing SW: SEMCAD, V1.8 Build 145

Body Bottom/GPRS 1900 Mid/Area Scan (81x121x1): Measurement grid: dx=10mm, dy=10mm

Maximum value of SAR (interpolated) = 0.523 mW/g

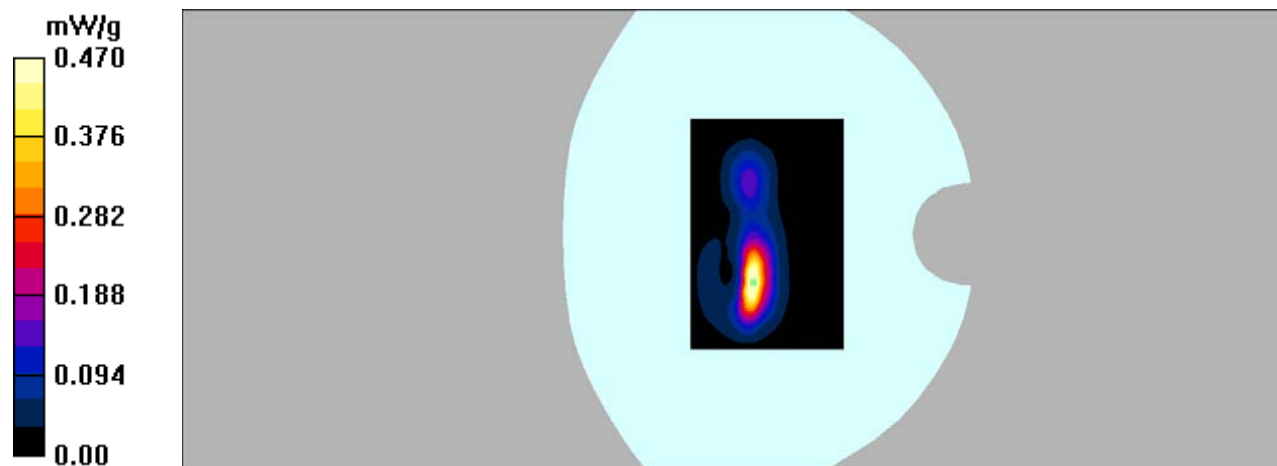
Body Bottom/GPRS 1900 Mid/Zoom Scan (7x7x7)/Cube 0: Measurement grid: dx=5mm, dy=5mm, dz=5mm

Reference Value = 7.97 V/m; Power Drift = 0.131 dB

Peak SAR (extrapolated) = 1.00 W/kg

SAR(1 g) = 0.399 mW/g; SAR(10 g) = 0.160 mW/g

Maximum value of SAR (measured) = 0.470 mW/g



DUT: Tablet; Type: Astro Phablet 7s;

Communication System: 3G Bands; Frequency: 836.6 MHz; Duty Cycle: 1:1

Medium parameters used: $f = 836.6$ MHz; $\sigma = 0.89$ mho/m; $\epsilon_r = 42.04$; $\rho = 1000$ kg/m³

Phantom section: Flat Section

DASY4 Configuration:

- Probe: EX3DV4 – SN7382; ConvF(10.50, 10.50, 10.50); Calibrated: 26/10/2016
- Sensor-Surface: 4mm (Mechanical Surface Detection)
- Electronics: DAE – SN772; Calibrated: 25/10/2016
- Phantom: TWIN SAM; Type: Twin SAM V5.0; Serial: 1909
- Measurement SW: DASY4, V4.5 Build 19; Postprocessing SW: SEMCAD, V1.8 Build 145

Head cheek/WCDMA Band 5 Mid/Area Scan (121x141x1): Measurement grid:

$dx=15$ mm, $dy=15$ mm

Maximum value of SAR (interpolated) = 0.102 mW/g

Head cheek/WCDMA Band 5 Mid/Zoom Scan (7x7x7)/Cube 0: Measurement grid:

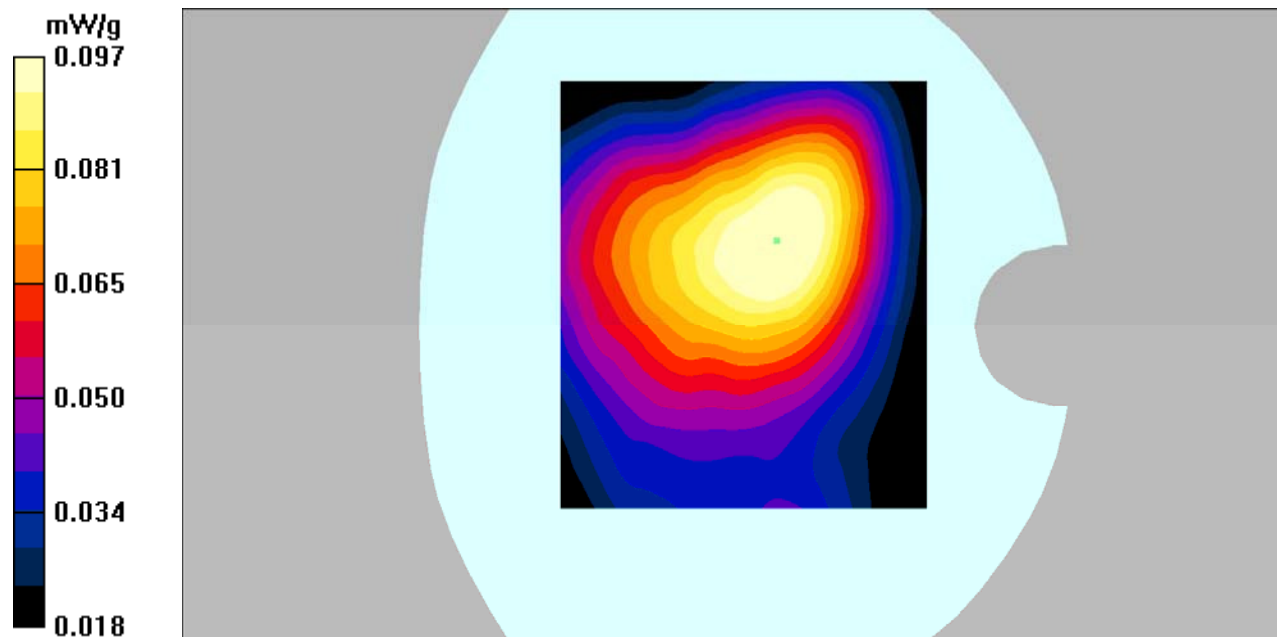
$dx=5$ mm, $dy=5$ mm, $dz=5$ mm

Reference Value = 9.52 V/m; Power Drift = -0.061 dB

Peak SAR (extrapolated) = 0.113 W/kg

SAR(1 g) = 0.092 mW/g; SAR(10 g) = 0.068 mW/g

Maximum value of SAR (measured) = 0.097 mW/g



DUT: Tablet; Type: Astro Phablet 7s;

Communication System: 3G Bands; Frequency: 826.4 MHz; Duty Cycle: 1:1

Medium parameters used: $f = 826.4$ MHz; $\sigma = 0.98$ mho/m; $\epsilon_r = 55.42$; $\rho = 1000$ kg/m³

Phantom section: Flat Section

DASY4 Configuration:

- Probe: EX3DV4 – SN7382; ConvF(10.54, 10.54, 10.54); Calibrated: 26/10/2016
- Sensor-Surface: 4mm (Mechanical Surface Detection)
- Electronics: DAE – SN772; Calibrated: 25/10/2016
- Phantom: TWIN SAM; Type: Twin SAM V5.0; Serial: 1909
- Measurement SW: DASY4, V4.5 Build 19; Postprocessing SW: SEMCAD, V1.8 Build 145

Body Back/WCDMA Band 5 low/Area Scan (121x131x1): Measurement grid:

$dx=10$ mm, $dy=10$ mm

Maximum value of SAR (interpolated) = 0.931 mW/g

Body Back/WCDMA Band 5 low/Zoom Scan (7x7x7)/Cube 0: Measurement grid:

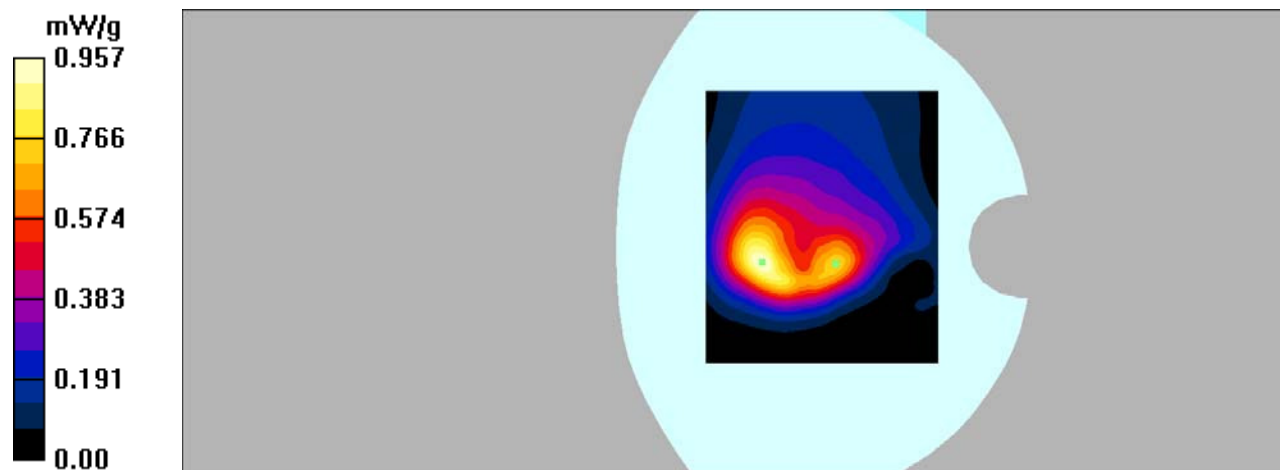
$dx=5$ mm, $dy=5$ mm, $dz=5$ mm

Reference Value = 25.9 V/m; Power Drift = -0.131 dB

Peak SAR (extrapolated) = 1.51 W/kg

SAR(1 g) = 0.854 mW/g; SAR(10 g) = 0.504 mW/g

Maximum value of SAR (measured) = 0.957 mW/g



DUT: Tablet; Type: Astro Phablet 7s;

Communication System: 3G Bands; Frequency: 836.6 MHz; Duty Cycle: 1:1

Medium parameters used: $f = 836.6$ MHz; $\sigma = 0.95$ mho/m; $\epsilon_r = 55.47$; $\rho = 1000$ kg/m³

Phantom section: Flat Section

DASY4 Configuration:

- Probe: EX3DV4 – SN7382; ConvF(10.54, 10.54, 10.54); Calibrated: 26/10/2016
- Sensor-Surface: 4mm (Mechanical Surface Detection)
- Electronics: DAE – SN772; Calibrated: 25/10/2016
- Phantom: TWIN SAM; Type: Twin SAM V5.0; Serial: 1909
- Measurement SW: DASY4, V4.5 Build 19; Postprocessing SW: SEMCAD, V1.8 Build 145

Body Back/WCDMA Band 5 mid/Area Scan (121x141x1): Measurement grid:

$dx=10$ mm, $dy=10$ mm

Maximum value of SAR (interpolated) = 0.941 mW/g

Body Back/WCDMA Band 5 mid/Zoom Scan (7x7x7)/Cube 0: Measurement grid:

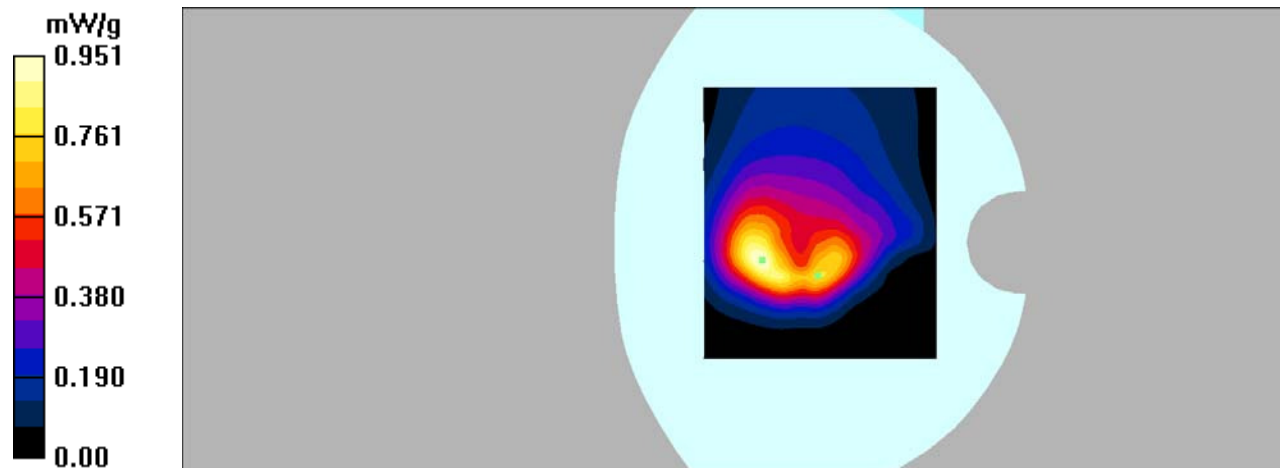
$dx=5$ mm, $dy=5$ mm, $dz=5$ mm

Reference Value = 26.4 V/m; Power Drift = -0.009 dB

Peak SAR (extrapolated) = 1.51 W/kg

SAR(1 g) = 0.857 mW/g; SAR(10 g) = 0.503 mW/g

Maximum value of SAR (measured) = 0.951 mW/g



DUT: Tablet; Type: Astro Phablet 7s;

Communication System: 3G Bands; Frequency: 846.6 MHz; Duty Cycle: 1:1

Medium parameters used: $f = 846.6$ MHz; $\sigma = 0.98$ mho/m; $\epsilon_r = 55.47$; $\rho = 1000$ kg/m³

Phantom section: Flat Section

DASY4 Configuration:

- Probe: EX3DV4 – SN7382; ConvF(10.54, 10.54, 10.54); Calibrated: 26/10/2016
- Sensor-Surface: 4mm (Mechanical Surface Detection)
- Electronics: DAE – SN772; Calibrated: 25/10/2016
- Phantom: TWIN SAM; Type: Twin SAM V5.0; Serial: 1909
- Measurement SW: DASY4, V4.5 Build 19; Postprocessing SW: SEMCAD, V1.8 Build 145

Body Back/WCDMA Band 5 High/Area Scan (121x131x1): Measurement grid:

$dx=10$ mm, $dy=10$ mm

Maximum value of SAR (interpolated) = 1.10 mW/g

Body Back/WCDMA Band 5 High/Zoom Scan (7x7x7)/Cube 0: Measurement grid:

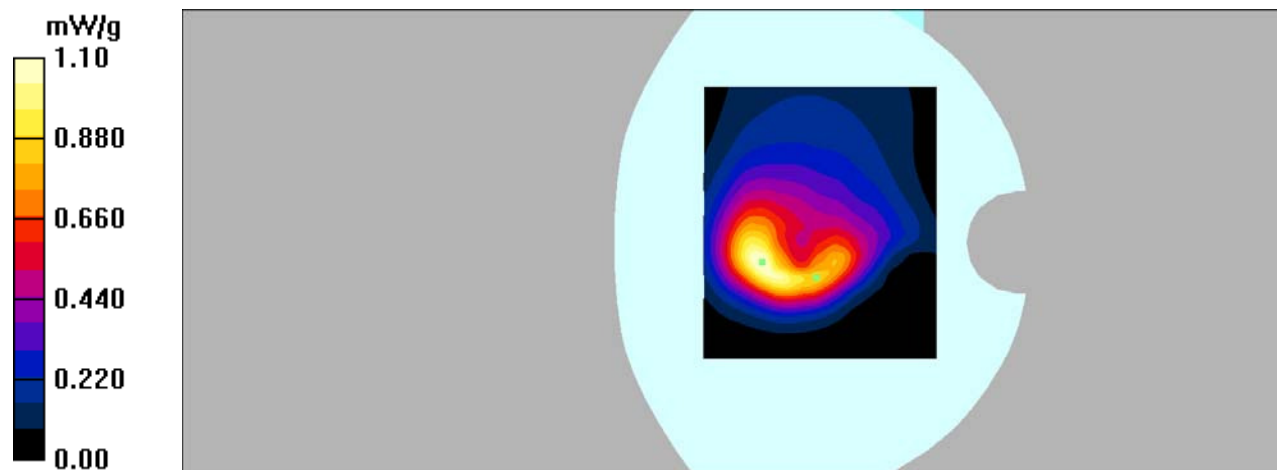
$dx=5$ mm, $dy=5$ mm, $dz=5$ mm

Reference Value = 26.3 V/m; Power Drift = -0.106 dB

Peak SAR (extrapolated) = 1.78 W/kg

SAR(1 g) = 1.01 mW/g; SAR(10 g) = 0.588 mW/g

Maximum value of SAR (measured) = 1.10 mW/g



DUT: Tablet; Type: Astro Phablet 7s;

Communication System: 3G Bands; Frequency: 836.6 MHz; Duty Cycle: 1:1

Medium parameters used: $f = 836.6$ MHz; $\sigma = 0.95$ mho/m; $\epsilon_r = 55.47$; $\rho = 1000$ kg/m³

Phantom section: Flat Section

DASY4 Configuration:

- Probe: EX3DV4 – SN7382; ConvF(10.54, 10.54, 10.54); Calibrated: 26/10/2016
- Sensor-Surface: 4mm (Mechanical Surface Detection)
- Electronics: DAE – SN772; Calibrated: 25/10/2016
- Phantom: TWIN SAM; Type: Twin SAM V5.0; Serial: 1909
- Measurement SW: DASY4, V4.5 Build 19; Postprocessing SW: SEMCAD, V1.8 Build 145

Body Right/WCDMA Band 5 Mid/Area Scan (61x121x1): Measurement grid:

$dx=15$ mm, $dy=15$ mm

Maximum value of SAR (interpolated) = 0.064 mW/g

Body Right/WCDMA Band 5 Mid/Zoom Scan (7x7x7)/Cube 0: Measurement grid:

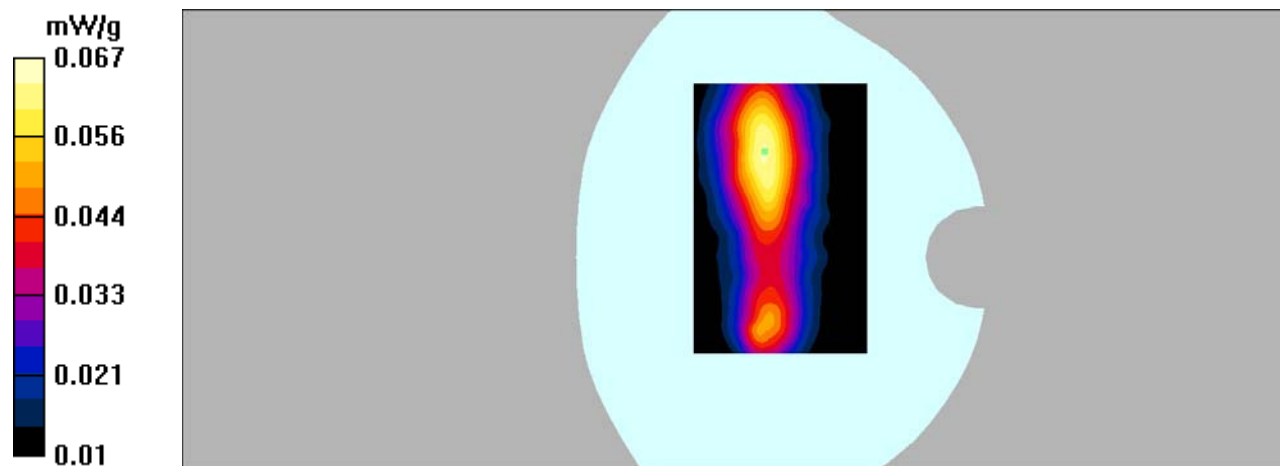
$dx=5$ mm, $dy=5$ mm, $dz=5$ mm

Reference Value = 6.33 V/m; Power Drift = -0.014 dB

Peak SAR (extrapolated) = 0.085 W/kg

SAR(1 g) = 0.061 mW/g; SAR(10 g) = 0.042 mW/g

Maximum value of SAR (measured) = 0.067 mW/g



DUT: Tablet; Type: Astro Phablet 7s;

Communication System: 3G Bands; Frequency: 836.6 MHz; Duty Cycle: 1:1

Medium parameters used: $f = 836.6$ MHz; $\sigma = 0.95$ mho/m; $\epsilon_r = 55.47$; $\rho = 1000$ kg/m³

Phantom section: Flat Section

DASY4 Configuration:

- Probe: EX3DV4 – SN7382; ConvF(10.54, 10.54, 10.54); Calibrated: 26/10/2016
- Sensor-Surface: 4mm (Mechanical Surface Detection)
- Electronics: DAE – SN772; Calibrated: 25/10/2016
- Phantom: TWIN SAM; Type: Twin SAM V5.0; Serial: 1909
- Measurement SW: DASY4, V4.5 Build 19; Postprocessing SW: SEMCAD, V1.8 Build 145

Body Bottom/WCDMA Band 5 mid/Area Scan (81x121x1): Measurement grid:

$dx=15$ mm, $dy=15$ mm

Maximum value of SAR (interpolated) = 0.027 mW/g

Body Bottom/WCDMA Band 5 mid/Zoom Scan (7x7x7)/Cube 0: Measurement grid:

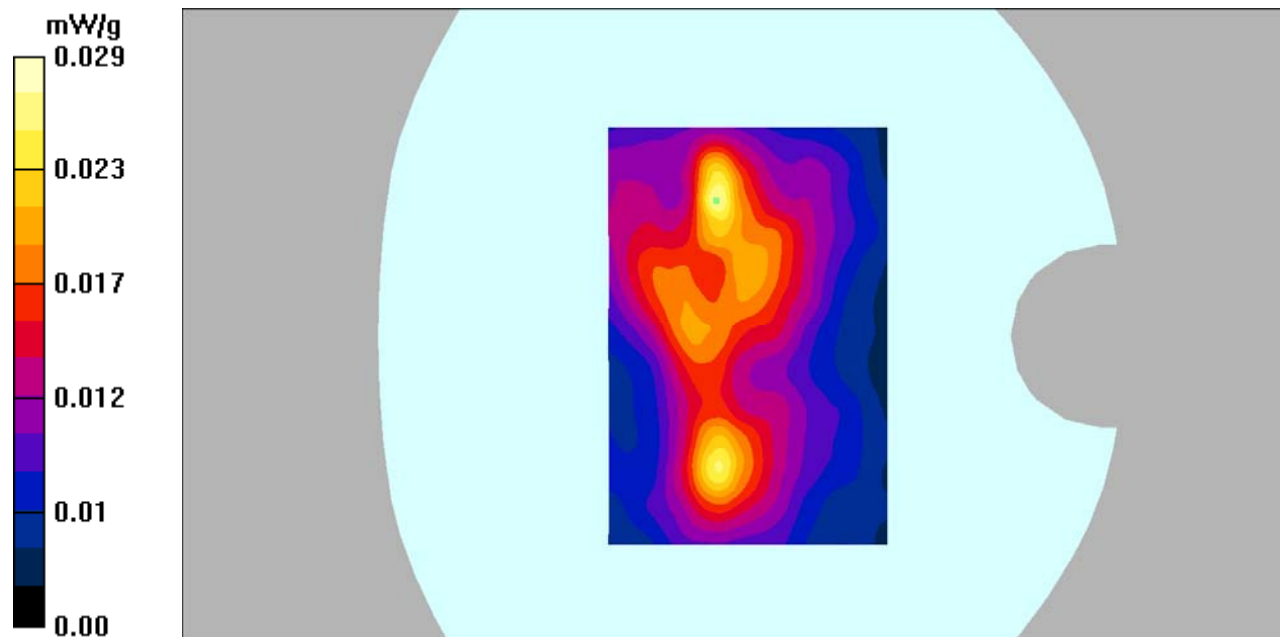
$dx=5$ mm, $dy=5$ mm, $dz=5$ mm

Reference Value = 3.88 V/m; Power Drift = -0.038 dB

Peak SAR (extrapolated) = 0.073 W/kg

SAR(1 g) = 0.026 mW/g; SAR(10 g) = 0.013 mW/g

Maximum value of SAR (measured) = 0.029 mW/g



DUT: Tablet; Type: Astro Phablet 7s;

Communication System: 3G Bands; Frequency: 1880 MHz; Duty Cycle: 1:1

Medium parameters used: $f = 1880$ MHz; $\sigma = 1.36$ mho/m; $\epsilon_r = 40.10$; $\rho = 1000$ kg/m³

Phantom section: Flat Section

DASY4 Configuration:

- Probe: EX3DV4 – SN7382; ConvF(8.71, 8.71, 8.71); Calibrated: 26/10/2016
- Sensor-Surface: 4mm (Mechanical Surface Detection)
- Electronics: DAE – SN772; Calibrated: 25/10/2016
- Phantom: TWIN SAM; Type: Twin SAM V5.0; Serial: 1909
- Measurement SW: DASY4, V4.5 Build 19; Postprocessing SW: SEMCAD, V1.8 Build 145

Head cheek/WCDMA Band 2 Mid/Area Scan (81x101x1): Measurement grid:

$dx=15$ mm, $dy=15$ mm

Maximum value of SAR (interpolated) = 0.055 mW/g

Head cheek/WCDMA Band 2 Mid/Zoom Scan (7x7x7)/Cube 0: Measurement grid:

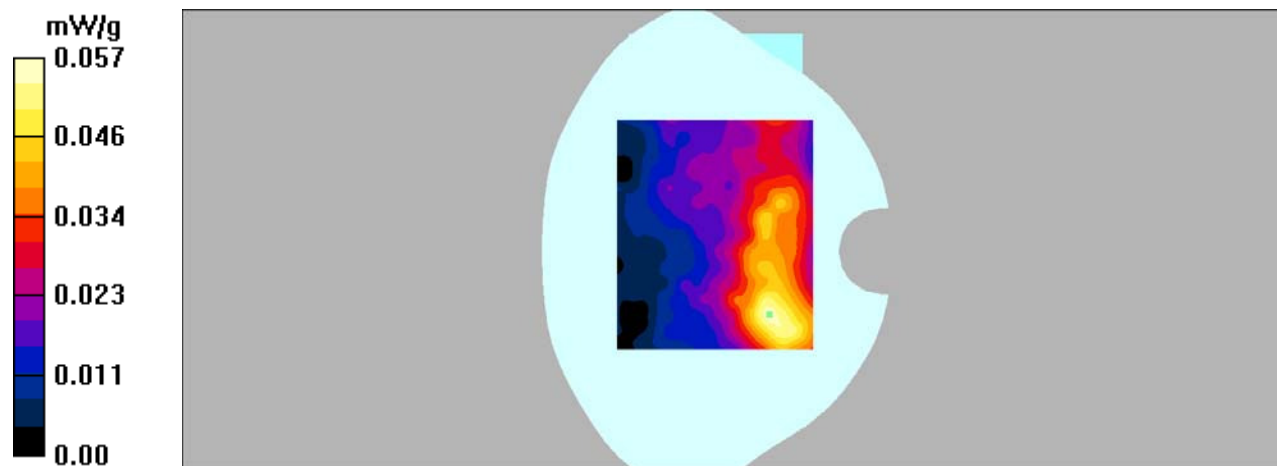
$dx=5$ mm, $dy=5$ mm, $dz=5$ mm

Reference Value = 3.53 V/m; Power Drift = -0.072 dB

Peak SAR (extrapolated) = 0.090 W/kg

SAR(1 g) = 0.051 mW/g; SAR(10 g) = 0.031 mW/g

Maximum value of SAR (measured) = 0.057 mW/g



DUT: Tablet; Type: Astro Phablet 7s;

Communication System: 3G Bands; Frequency: 1880 MHz; Duty Cycle: 1:1

Medium parameters used: $f = 1880$ MHz; $\sigma = 1.55$ mho/m; $\epsilon_r = 53.72$; $\rho = 1000$ kg/m³

Phantom section: Flat Section

DASY4 Configuration:

- Probe: EX3DV4 – SN7382; ConvF(8.31, 8.31, 8.31); Calibrated: 26/10/2016
- Sensor-Surface: 4mm (Mechanical Surface Detection)
- Electronics: DAE – SN772; Calibrated: 25/10/2016
- Phantom: TWIN SAM; Type: Twin SAM V5.0; Serial: 1909
- Measurement SW: DASY4, V4.5 Build 19; Postprocessing SW: SEMCAD, V1.8 Build 145

Body Back/WCDMA Band 2 Mid/Area Scan (121x141x1): Measurement grid:

$dx=10$ mm, $dy=10$ mm

Maximum value of SAR (interpolated) = 0.583 mW/g

Body Back/WCDMA Band 2 Mid/Zoom Scan (7x7x7)/Cube 0: Measurement grid:

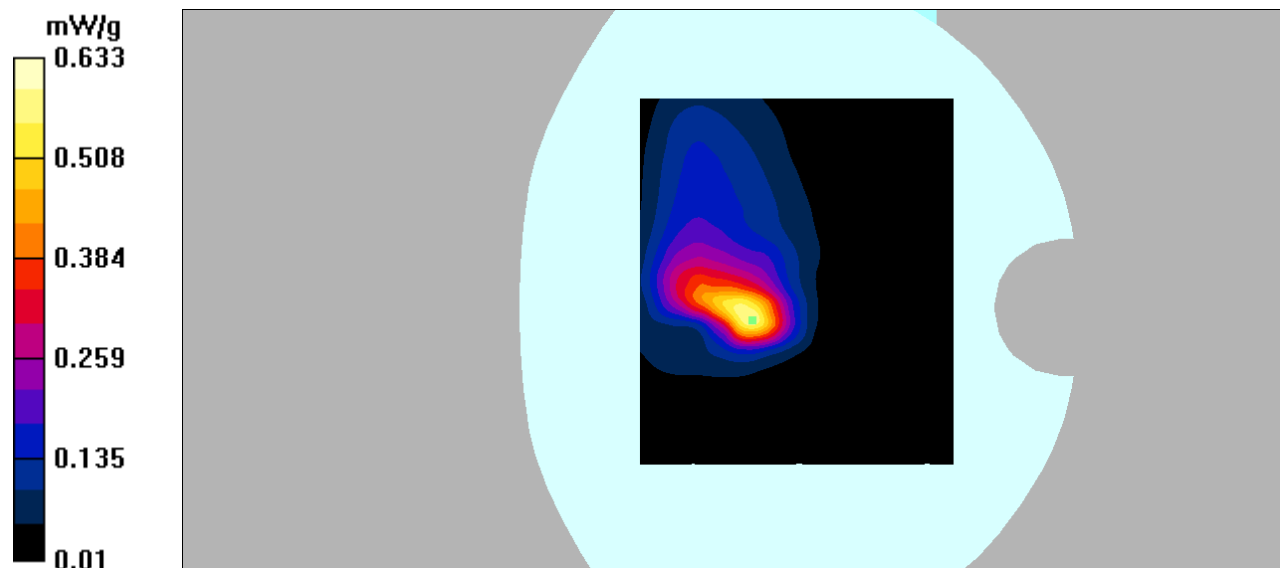
$dx=5$ mm, $dy=5$ mm, $dz=5$ mm

Reference Value = 10.4 V/m; Power Drift = 0.041 dB

Peak SAR (extrapolated) = 1.27 W/kg

SAR(1 g) = 0.558 mW/g; SAR(10 g) = 0.260 mW/g

Maximum value of SAR (measured) = 0.633 mW/g



DUT: Tablet; Type: Astro Phablet 7s;

Communication System: 3G Bands; Frequency: 1880 MHz; Duty Cycle: 1:1

Medium parameters used: $f = 1880$ MHz; $\sigma = 1.55$ mho/m; $\epsilon_r = 53.72$; $\rho = 1000$ kg/m³

Phantom section: Flat Section

DASY4 Configuration:

- Probe: EX3DV4 – SN7382; ConvF(8.31, 8.31, 8.31); Calibrated: 26/10/2016
- Sensor-Surface: 4mm (Mechanical Surface Detection)
- Electronics: DAE – SN772; Calibrated: 25/10/2016
- Phantom: TWIN SAM; Type: Twin SAM V5.0; Serial: 1909
- Measurement SW: DASY4, V4.5 Build 19; Postprocessing SW: SEMCAD, V1.8 Build 145

Body Right/WCDMA Band 2 Mid/Area Scan (121x141x1): Measurement grid:

$dx=10$ mm, $dy=10$ mm

Maximum value of SAR (interpolated) = 0.037 mW/g

Body Right/WCDMA Band 2 Mid/Zoom Scan (7x7x7)/Cube 0: Measurement grid:

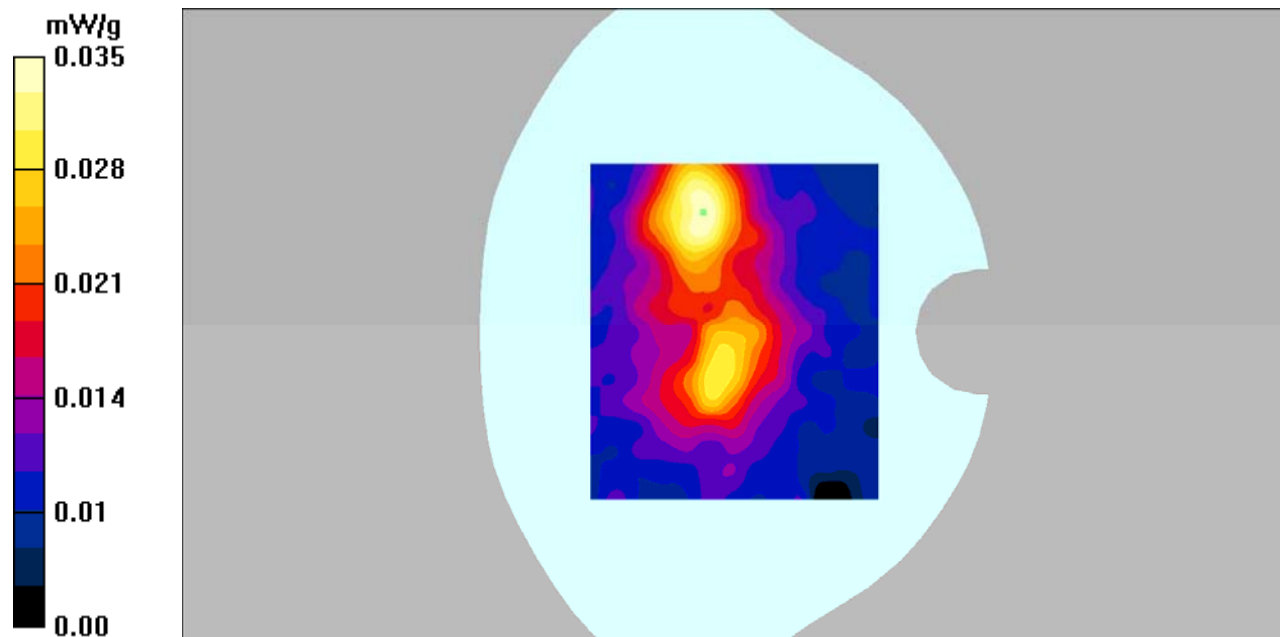
$dx=5$ mm, $dy=5$ mm, $dz=5$ mm

Reference Value = 4.25 V/m; Power Drift = 0.067 dB

Peak SAR (extrapolated) = 0.048 W/kg

SAR(1 g) = 0.030 mW/g; SAR(10 g) = 0.019 mW/g

Maximum value of SAR (measured) = 0.035 mW/g



DUT: Tablet; Type: Astro Phablet 7s;

Communication System: 3G Bands; Frequency: 1852.4 MHz; Duty Cycle: 1:1

Medium parameters used: $f = 1852.4$ MHz; $\sigma = 1.54$ mho/m; $\epsilon_r = 53.36$; $\rho = 1000$ kg/m³

Phantom section: Flat Section

DASY4 Configuration:

- Probe: EX3DV4 – SN7382; ConvF(8.31, 8.31, 8.31); Calibrated: 26/10/2016
- Sensor-Surface: 4mm (Mechanical Surface Detection)
- Electronics: DAE – SN772; Calibrated: 25/10/2016
- Phantom: TWIN SAM; Type: Twin SAM V5.0; Serial: 1909
- Measurement SW: DASY4, V4.5 Build 19; Postprocessing SW: SEMCAD, V1.8 Build 145

Body Bottom/WCDMA Band 2 Low/Area Scan (91x121x1): Measurement grid:

$dx=10$ mm, $dy=10$ mm

Maximum value of SAR (interpolated) = 1.46 mW/g

Body Bottom/WCDMA Band 2 Low/Zoom Scan (7x7x7)/Cube 0: Measurement grid:

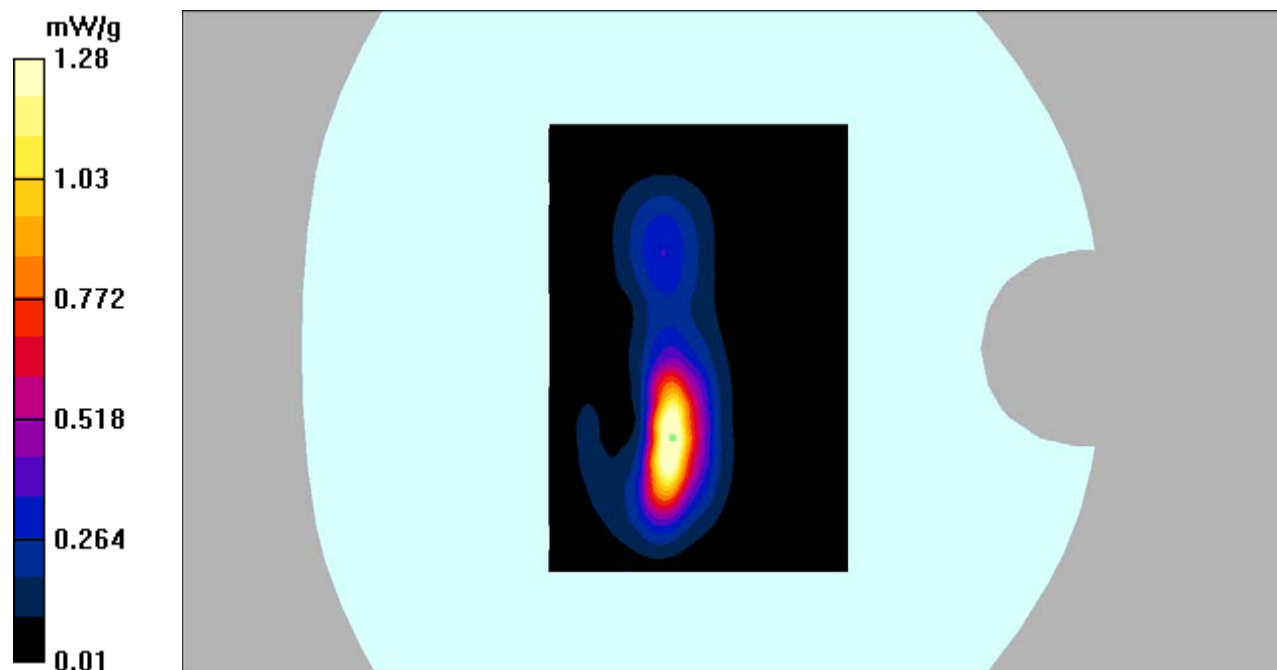
$dx=5$ mm, $dy=5$ mm, $dz=5$ mm

Reference Value = 12.7 V/m; Power Drift = 0.031 dB

Peak SAR (extrapolated) = 2.80 W/kg

SAR(1 g) = 1.09 mW/g; SAR(10 g) = 0.435 mW/g

Maximum value of SAR (measured) = 1.28 mW/g



DUT: Tablet; Type: Astro Phablet 7s;

Communication System: 3G Bands; Frequency: 1880 MHz; Duty Cycle: 1:1

Medium parameters used: $f = 1880$ MHz; $\sigma = 1.55$ mho/m; $\epsilon_r = 53.72$; $\rho = 1000$ kg/m³

Phantom section: Flat Section

DASY4 Configuration:

- Probe: EX3DV4 – SN7382; ConvF(8.31, 8.31, 8.31); Calibrated: 26/10/2016
- Sensor-Surface: 4mm (Mechanical Surface Detection)
- Electronics: DAE – SN772; Calibrated: 25/10/2016
- Phantom: TWIN SAM; Type: Twin SAM V5.0; Serial: 1909
- Measurement SW: DASY4, V4.5 Build 19; Postprocessing SW: SEMCAD, V1.8 Build 145

Body Bottom/WCDMA Band 2 Mid/Area Scan (91x121x1): Measurement grid:

$dx=10$ mm, $dy=10$ mm

Maximum value of SAR (interpolated) = 1.16 mW/g

Body Bottom/WCDMA Band 2 Mid/Zoom Scan (7x7x7)/Cube 0: Measurement grid:

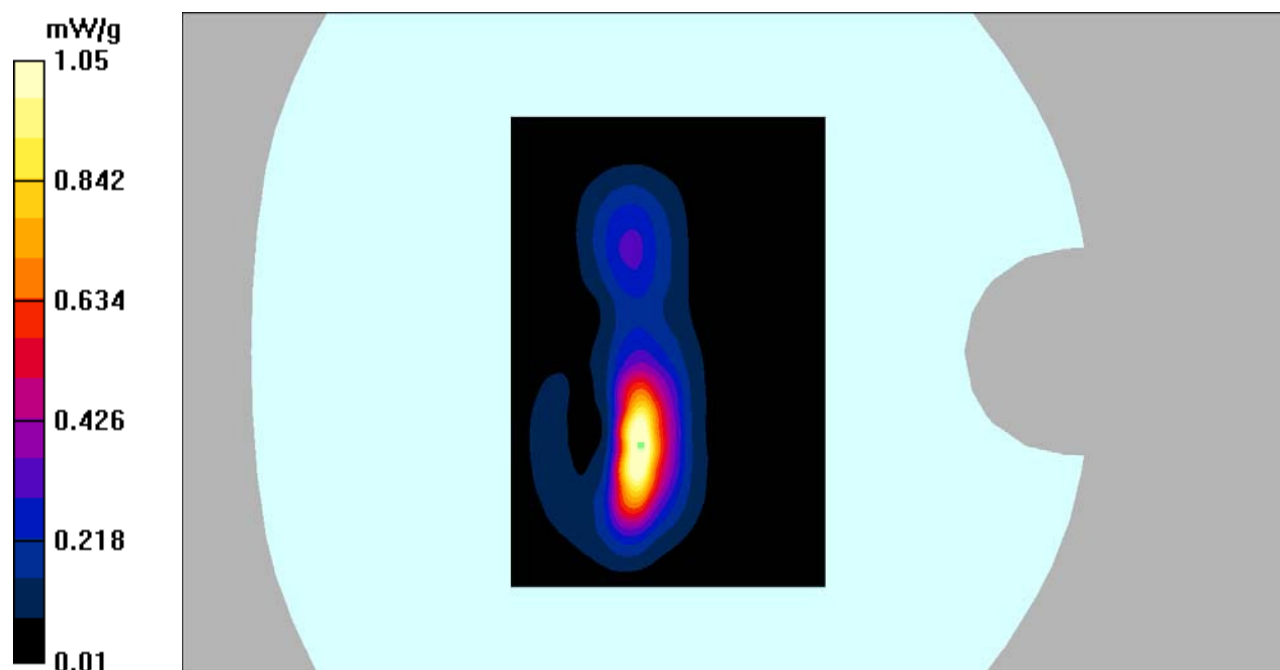
$dx=5$ mm, $dy=5$ mm, $dz=5$ mm

Reference Value = 12.3 V/m; Power Drift = -0.075 dB

Peak SAR (extrapolated) = 2.31 W/kg

SAR(1 g) = 0.883 mW/g; SAR(10 g) = 0.348 mW/g

Maximum value of SAR (measured) = 1.05 mW/g



DUT: Tablet; Type: Astro Phablet 7s;

Communication System: 3G Bands; Frequency: 1907.6 MHz; Duty Cycle: 1:1

Medium parameters used: $f = 1907.6$ MHz; $\sigma = 1.53$ mho/m; $\epsilon_r = 53.70$; $\rho = 1000$ kg/m³

Phantom section: Flat Section

DASY4 Configuration:

- Probe: EX3DV4 – SN7382; ConvF(8.31, 8.31, 8.31); Calibrated: 26/10/2016
- Sensor-Surface: 4mm (Mechanical Surface Detection)
- Electronics: DAE – SN772; Calibrated: 25/10/2016
- Phantom: TWIN SAM; Type: Twin SAM V5.0; Serial: 1909
- Measurement SW: DASY4, V4.5 Build 19; Postprocessing SW: SEMCAD, V1.8 Build 145

Body Bottom/WCDMA Band 2 High/Area Scan (81x121x1): Measurement grid:

$dx=10$ mm, $dy=10$ mm

Maximum value of SAR (interpolated) = 0.971 mW/g

Body Bottom/WCDMA Band 2 High/Zoom Scan (7x7x7)/Cube 0: Measurement grid:

$dx=5$ mm, $dy=5$ mm, $dz=5$ mm

Reference Value = 11.6 V/m; Power Drift = 0.043 dB

Peak SAR (extrapolated) = 1.98 W/kg

SAR(1 g) = 0.743 mW/g; SAR(10 g) = 0.292 mW/g

Maximum value of SAR (measured) = 0.878 mW/g

