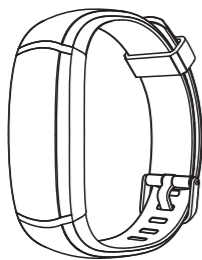


# DS-D20F USERS GUIDE



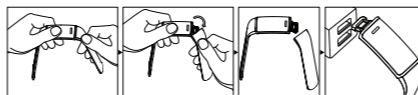
## 【Quick Start】

Thank you for choosing Desay Fitness Band! Please take the time to read this manual carefully, even if you are already familiar with a similar product. This manual lets you started quickly using your Fitness Band. Setup ensures that you can synchronize your data with the Purifit APP, where you can get detailed information on your sets, such as view historical data, more function, and so on. As soon as setup is complete, you're ready to start moving! When you use your band first time, please charge you fitness band fist.

## 【Charging Your Fitness Band】

Your Fitness Band comes with a built-in rechargeable battery and a Standard USB charging port. Charge fully before use. Insert the USB port into USB port on the back of the band and plug the other end of the USB connector either a PC or power adaptor to start charging.

Note:  
• If you found nothing displayed, your Fitness Band maybe no power, please charge it according to the following picture, then it will power on auto matically.

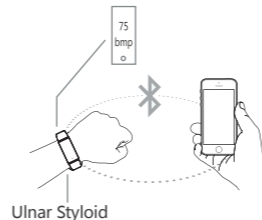


Note:  
• Please use the standard USB port to charge.  
• Initial charging time is approximately 1.5 hours.

## 【Wear/Use Your Fitness Band】

Your Fitness Band has an adjustable wristband. Attach your Fitness Band to your wrist with the touch key closer you and the band wrapped around your wrist. Align the sizing clip along the band to find the best and most optimal fit.

Your band was built in many features, such as Pedometer, Activity tracker, Notification, Sedentary and smart reminder, Sleep monitoring, Heart Rate monitoring, Smart silent alarm, Phone finder, Sports mode, etc. Some features must be enable in APP, please download the Purifit APP for more features and enable the functions.



## 【Download and Install Purifit APP】



Please scan the QR code or search the Purifit APP from the Google Play or Apple App Store, download and install it in you smartphone. Supported Devices are Android 5.0+ or iOS 9.0+



Note:  
• Note that you will need an account with the applicable store before you can download the APP

## 【Product Specifications】

Product	Fitness Band
CPU	Nordic nRF53832
Screen	0.96" TFT
Battery	100mAh Li-Battery
Charging Mode	USB Direct
Charging Voltage	DC 5V/1A
Operation	Touch Key
Waterproofing	IP68
Device Requirement	Android 5.0+ , iOS9.0+ , BT4.2+

## 【Warning And Precautions】

- For better experience, please register and connect when using Purifit APP, and connet you band with smartphone via Purifit APP instead of any other way.
- Do not expose the smart band to extreme temperatures for periods of time.
- Your fitness band is not suggested to wear when taking a shower or swimming.
- Lithium batteries, like all rechargeable batteries are recyclable and should be recycled or dispose waste. Contact your local government for disposal or recycling practices in your area.
- Time in Band can not be set, time and time mode will sync with your smartphone when connected.
- Please do not use any corrosive chemical to clean the device, use a soft cleaning cloth for the tracker and some mild soap and water for the band.
- Whilst great care was taken in the preparation of this user manual. Constant product development may mean that some information has been updated since the user manual was printed. OTA (Over The Air) software updates are available and can be located in the APP under firmware updates. This document is subject to change without prior written notice.
- To learn more FAQ, please open Purifit--> More --> Help.

## 【Declaration】

- Recharge voltage: 5V  $\equiv$  1A, " $\equiv$ " The symbol indicates DC voltage
- RECYCLING: This device bears the selective sortingsymbol for Waste electrical and electronic equipment(WEEE). This means that this product must be handledpursuant to European directive 2012/19/EU in order to be recycled or dismantled to minimize its impact on the environment.
- This device is in compliance with the essential requirements and other relevant provisions of Directive2014/53/EU.
- This device complies with Part 15 of the FCC Rules. Operation is subject to the following two conditions:  
(1) this device may not cause harmful interference.  
(2) this device must accept any interference received, including interference that may cause undesired operation.
- Operating ambient temperature: -10-60°C  
frequency band: 2402-2480MHz  
the maximum RF Power: 0.046mW

## FCC statement This device complies with part 15 of the FCC Rules.

Operation is subject to the following two conditions:  
(1) This device may not cause harmful interference, and (2) this device must accept any interference received, including interference that may cause undesired operation.

## Correct Disposal of This Product

(Waste Electrical & Electronic Equipment) This Marking shown on the product or its literature, indicate that it should not be disposed with other household wastes at the end of its working life.

To prevent possible harm to the environment or human health from uncontrolled waste disposal, please separate this from other types of wastes and recycle it responsibly to promote the sustainable reuse of material resources.

Household user should contact either the retailer where they purchased this product, or their local government office, for details of where and how they can take this item for environmentally safe recycling.

Business users should contact their supplier and check the terms and conditions of the purchase contact. This product should not be mixed with other commercial wastes for disposal.

Changes or modifications not expressly approved by the party responsible for compliance could void the user's authority to operatethe equipment.

NOTE: This equipment has been tested and found to comply with the limits for a Class B digital device, pursuant to part 15 of the FCC Rules. These limits are designed to provide reasonable protection against harmful interference in a residential installation. This equipment generates, uses and can radiate radio frequency energy and, if not installed and used in accordance with the instructions, may cause harmful interference to radio communications. However, there is no guarantee that interference will not occur in a particular installation. If this equipment does cause harmful interference to radio or television reception, which can be determined by turning the equipment off and on, the user is encouraged to try to correct the interference by one or more of the following measures:  
—Reorient or relocate the receiving antenna.  
—Increase the separation between the equipment and receiver.

—Connect the equipment into an outlet on a circuit different from that to which the receiver is connected.  
—Consult the dealer or an experienced radio/TV technician for help.

The equipment complies with FCC radiation exposure limits set forth for an uncontrolled environment. During the operation of device a distance of 15cm surrounding the device and 20 cm above the top surface of the device must be respected. This device complies with Part15 of the FCC Rules. Operation is subject to the following two conditions:  
(1) this device may not cause harmful interference, and (2) this device must accept any interference received, including interference that may cause undesired operation.