

FCC Report (Bluetooth)

Applicant: DESAY INFOR TECHNOLOGY CO.,LTD.
Address of Applicant: Desay No.3 Industrial Zone Chengjiang Town Huizhou China
Equipment Under Test (EUT)
Product Name: Smart Bracelet
Model No.: B521, B522, B502, B535, B107, JRV-SBD1500, Jarv Runfit
FCC ID: 2AEMN-B521
Applicable standards: FCC CFR Title 47 Part 15.247:2015
Date of sample receipt: September 19, 2016
Date of Test: September 19-23, 2016
Date of report issued: September 23, 2016
Test Result : PASS *

* In the configuration tested, the EUT complied with the standards specified above.

Authorized Signature:

A circular logo for GTS (Global United Technology Services Co., Ltd.) is overlaid with a handwritten signature in black ink. The signature appears to read "Robinson Lo". The logo contains the text "GTS" in the center, "GLOBAL UNITED TECHNOLOGY SERVICES CO., LTD." around the perimeter, and "FORM TESTING" below the center.

Robinson Lo

Laboratory Manager

This report details the results of the testing carried out on one sample. The results contained in this test report do not relate to other samples of the same product and does not permit the use of the GTS product certification mark. The manufacturer should ensure that all products in series production are in conformity with the product sample detailed in this report.

This report may only be reproduced and distributed in full. If the product in this report is used in any configuration other than that detailed in the report, the manufacturer must ensure the new system complies with all relevant standards. Any mention of GTS or testing done by GTS in connection with, distribution or use of the product described in this report must be approved by GTS in writing.

This document cannot be reproduced except in full, without prior written approval of the Company. Any unauthorized alteration, forgery or falsification of the content or appearance of this document is unlawful and offenders may be prosecuted to the fullest extent of the law. Unless otherwise stated the results shown in this test report refer only to the sample(s) tested and such sample(s) are retained for 90 days only.

2 Version

Version No.	Date	Description
00	September 23, 2016	Original

Prepared By:

Edward Pan

Date:

September 23, 2016

Project Engineer

Check By:

Andy Wu

Date:

September 23, 2016

Reviewer

3 Contents

	Page
1 COVER PAGE.....	1
2 VERSION.....	2
3 CONTENTS	3
4 TEST SUMMARY	4
5 GENERAL INFORMATION.....	5
5.1 CLIENT INFORMATION	5
5.2 GENERAL DESCRIPTION OF EUT	5
5.3 TEST MODE	7
5.4 DESCRIPTION OF SUPPORT UNITS	7
5.5 TEST FACILITY.....	7
5.6 TEST LOCATION	7
6 TEST INSTRUMENTS LIST	8
7 TEST RESULTS AND MEASUREMENT DATA.....	9
7.1 ANTENNA REQUIREMENT	9
7.2 CONDUCTED EMISSIONS	10
7.3 CONDUCTED OUTPUT POWER	13
7.4 CHANNEL BANDWIDTH	15
7.5 POWER SPECTRAL DENSITY	17
7.6 BAND EDGES.....	19
7.6.1 Conducted Emission Method.....	19
7.6.2 Radiated Emission Method.....	20
7.7 SPURIOUS EMISSION.....	22
7.7.1 Conducted Emission Method.....	22
7.7.2 Radiated Emission Method.....	24
8 TEST SETUP PHOTO	30
9 EUT CONSTRUCTIONAL DETAILS	32

4 Test Summary

Test Item	Section in CFR 47	Result
Antenna requirement	15.203/15.247 (c)	Pass
AC Power Line Conducted Emission	15.207	Pass
Conducted Output Power	15.247 (b)(3)	Pass
Channel Bandwidth	15.247 (a)(2)	Pass
Power Spectral Density	15.247 (e)	Pass
Band Edge	15.247(d)	Pass
Spurious Emission	15.205/15.209	Pass

Pass: The EUT complies with the essential requirements in the standard.

Remark: Test according to ANSI C63.4:2014 and ANSI C63.10:2013.

Measurement Uncertainty

Test Item	Frequency Range	Measurement Uncertainty	Notes
Radiated Emission	9kHz ~ 30MHz	± 4.34dB	(1)
Radiated Emission	30MHz ~ 1000MHz	± 4.24dB	(1)
Radiated Emission	1GHz ~ 26.5GHz	± 4.68dB	(1)
AC Power Line Conducted Emission	0.15MHz ~ 30MHz	± 3.45dB	(1)

Note (1): The measurement uncertainty is for coverage factor of k=2 and a level of confidence of 95%.

5 General Information

5.1 Client Information

Applicant:	DESAY INFOR TECHNOLOGY CO.,LTD.
Address of Applicant:	Desay No.3 Industrial Zone Chengjiang Town Huizhou China
Manufacturer/Factory:	DESAY INFOR TECHNOLOGY CO.,LTD.
Address of Manufacturer/Factory:	Desay No.3 Industrial Zone Chengjiang Town Huizhou China

5.2 General Description of EUT

Product Name:	Smart Bracelet
Model No.:	B521, B522, B502, B535, B107, JRV-SBD1500, Jarv Runfit
Test Model No. :	B521
<p><i>Remark: All above models are identical in the same PCB layout, interior structure and electrical circuits.</i></p> <p><i>The only differences are the model name and appearance for commercial purpose.</i></p>	
Operation Frequency:	2402MHz~2480MHz
Channel Numbers:	40
Channel Separation:	2MHz
Modulation Type:	GFSK
Antenna Type:	Chip antenna
Antenna Gain:	4.9dBi (declare by Applicant)
Power Supply:	DC 3.7V lithium battery

Operation Frequency each of channel							
Channel	Frequency	Channel	Frequency	Channel	Frequency	Channel	Frequency
1	2402MHz	11	2422MHz	21	2442MHz	31	2462MHz
2	2404MHz	12	2424MHz	22	2444MHz	32	2464MHz
⋮	⋮	⋮	⋮	⋮	⋮	⋮	⋮
9	2418MHz	19	2438MHz	29	2458MHz	39	2478MHz
10	2420MHz	20	2440MHz	30	2460MHz	40	2480MHz

Note:

In section 15.31(m), regards to the operating frequency range over 10 MHz, the Lowest frequency, the middle frequency, and the highest frequency of channel were selected to perform the test, and the selected channel see below:

Channel	Frequency
The lowest channel	2402MHz
The middle channel	2440MHz
The Highest channel	2480MHz

5.3 Test mode

Charging mode	Keep the EUT in Keeping TX mode
<p><i>Remark: During the test, the test voltage was tuned from 85% to 115% of the nominal rated supply voltage, and found that the worst case was under the nominal rated supply condition. So the report just shows that condition's data.</i></p>	

5.4 Description of Support Units

Manufacturer	Description	Model	Serial Number	FCC Approval
Apple	ADAPTER	MGS-UMC-001	N/A	FCC VoC

5.5 Test Facility

<p>The test facility is recognized, certified, or accredited by the following organizations:</p> <ul style="list-style-type: none"> ● FCC —Registration No.: 600491 Global United Technology Services Co., Ltd., Shenzhen EMC Laboratory has been registered and fully described in a report filed with the (FCC) Federal Communications Commission. The acceptance letter from the FCC is maintained in files. Registration 600491, June 22, 2016. ● Industry Canada (IC) —Registration No.: 9079A-2 The 3m Semi-anechoic chamber of Global United Technology Services Co., Ltd. has been registered by Certification and Engineering Bureau of Industry Canada for radio equipment testing with Registration No.: 9079A-2, August 15, 2016
--

5.6 Test Location

All tests were performed at:
<p>Global United Technology Services Co., Ltd. Address: No. 301-309, 3/F., Jinyuan Business Building, No.2, Laodong Industrial Zone, Xixiang Road, Baoan District, Shenzhen, Guangdong, China 518102 Tel: 0755-27798480 Fax: 0755-27798960</p>

6 Test Instruments list

Radiated Emission:						
Item	Test Equipment	Manufacturer	Model No.	Inventory No.	Cal.Date (mm-dd-yy)	Cal.Due date (mm-dd-yy)
1	3m Semi- Anechoic Chamber	ZhongYu Electron	9.0(L)*6.0(W)* 6.0(H)	GTS250	July. 03 2015	July. 02 2020
2	Control Room	ZhongYu Electron	6.2(L)*2.5(W)* 2.4(H)	GTS251	N/A	N/A
3	Spectrum Analyzer	Agilent	E4440A	GTS533	Jun. 29 2016	Jun. 28 2017
4	EMI Test Receiver	Rohde & Schwarz	ESU26	GTS203	Jun. 29 2016	Jun. 28 2017
5	BiConiLog Antenna	SCHWARZBECK MESS-ELEKTRONIK	VULB9163	GTS214	Jun. 29 2016	Jun. 28 2017
6	Double -ridged waveguide horn	SCHWARZBECK MESS-ELEKTRONIK	9120D-829	GTS208	Jun. 25 2016	Jun. 24 2017
7	Horn Antenna	ETS-LINDGREN	3160	GTS217	Mar. 26 2016	Mar. 25 2017
8	EMI Test Software	AUDIX	E3	N/A	N/A	N/A
9	Coaxial Cable	GTS	N/A	GTS213	Mar. 27 2016	Mar. 26 2017
10	Coaxial Cable	GTS	N/A	GTS211	Mar. 27 2016	Mar. 26 2017
11	Coaxial cable	GTS	N/A	GTS210	Mar. 27 2016	Mar. 26 2017
12	Coaxial Cable	GTS	N/A	GTS212	Mar. 27 2016	Mar. 26 2017
13	Amplifier(100kHz-3GHz)	HP	8347A	GTS204	Jun. 29 2016	Jun. 28 2017
14	Amplifier(2GHz-20GHz)	HP	8349B	GTS206	Jun. 29 2016	Jun. 28 2017
15	Amplifier (18-26GHz)	Rohde & Schwarz	AFS33-18002 650-30-8P-44	GTS218	Jun. 25 2016	Jun. 24 2017
16	Band filter	Amindeon	82346	GTS219	Mar. 27 2016	Mar. 26 2017

Conducted Emission:						
Item	Test Equipment	Manufacturer	Model No.	Inventory No.	Cal.Date (mm-dd-yy)	Cal.Due date (mm-dd-yy)
1	Shielding Room	ZhongYu Electron	7.0(L)x3.0(W)x3.0(H)	GTS264	Jun. 29 2016	Jun. 28 2017
2	EMI Test Receiver	Rohde & Schwarz	ESCS30	GTS223	Jun. 29 2016	Jun. 28 2017
3	10dB Pulse Limita	Rohde & Schwarz	N/A	GTS224	Jun. 29 2016	Jun. 28 2017
4	Coaxial Switch	ANRITSU CORP	MP59B	GTS225	Jun. 29 2016	Jun. 28 2017
5	LISN	SCHWARZBECK MESS-ELEKTRONIK	NSLK 8127	GTS226	Jun. 29 2016	Jun. 28 2017
6	Coaxial Cable	GTS	N/A	GTS227	Jun. 29 2016	Jun. 28 2017
7	EMI Test Software	AUDIX	E3	N/A	N/A	N/A

General used equipment:						
Item	Test Equipment	Manufacturer	Model No.	Inventory No.	Cal.Date (mm-dd-yy)	Cal.Due date (mm-dd-yy)
1	Barometer	ChangChun	DYM3	GTS257	July 06 2016	July 05 2017

7 Test results and Measurement Data

7.1 Antenna requirement

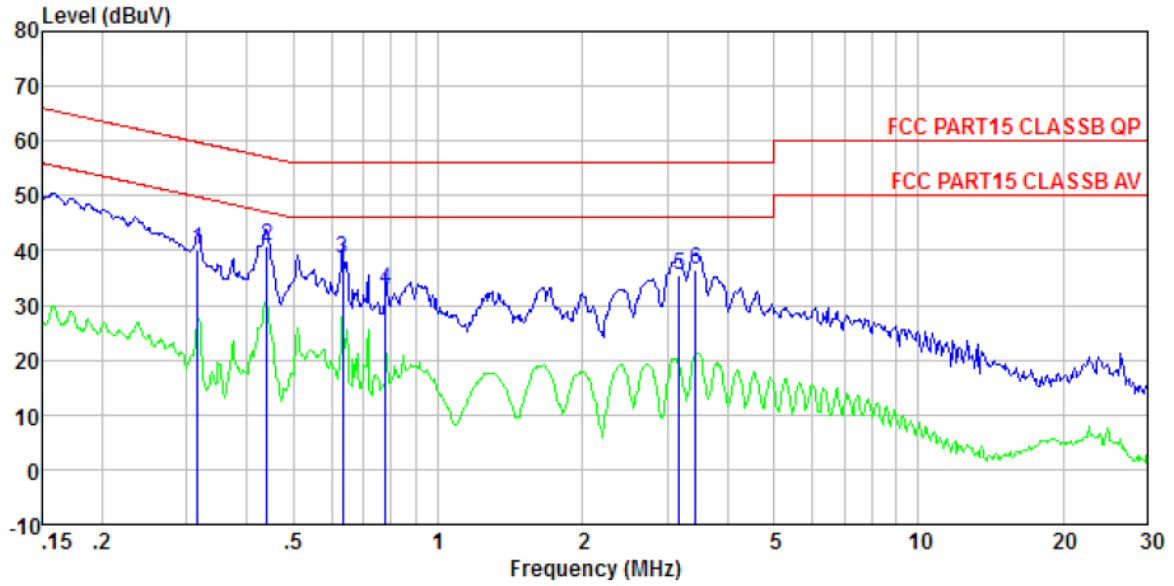
Standard requirement:	FCC Part15 C Section 15.203 /247(c)
<p>15.203 requirement:</p> <p>An intentional radiator shall be designed to ensure that no antenna other than that furnished by the responsible party shall be used with the device. The use of a permanently attached antenna or of an antenna that uses a unique coupling to the intentional radiator, the manufacturer may design the unit so that a broken antenna can be replaced by the user, but the use of a standard antenna jack or electrical connector is prohibited.</p> <p>15.247(c) (1)(i) requirement:</p> <p>(i) Systems operating in the 2400-2483.5 MHz band that is used exclusively for fixed. Point-to-point operations may employ transmitting antennas with directional gain greater than 6dBi provided the maximum conducted output power of the intentional radiator is reduced by 1 dB for every 3 dB that the directional gain of the antenna exceeds 6dBi.</p>	
EUT Antenna:	
<p><i>The antenna is chip antenna, the best case gain of the antenna is 4.9dBi</i></p> 	

7.2 Conducted Emissions

Test Requirement:	FCC Part15 C Section 15.207														
Test Method:	ANSI C63.10:2013														
Test Frequency Range:	150KHz to 30MHz														
Class / Severity:	Class B														
Receiver setup:	RBW=9KHz, VBW=30KHz, Sweep time=auto														
Limit:	<table border="1"> <thead> <tr> <th rowspan="2">Frequency range (MHz)</th> <th colspan="2">Limit (dBuV)</th> </tr> <tr> <th>Quasi-peak</th> <th>Average</th> </tr> </thead> <tbody> <tr> <td>0.15-0.5</td> <td>66 to 56*</td> <td>56 to 46*</td> </tr> <tr> <td>0.5-5</td> <td>56</td> <td>46</td> </tr> <tr> <td>5-30</td> <td>60</td> <td>50</td> </tr> </tbody> </table> <p>* Decreases with the logarithm of the frequency.</p>	Frequency range (MHz)	Limit (dBuV)		Quasi-peak	Average	0.15-0.5	66 to 56*	56 to 46*	0.5-5	56	46	5-30	60	50
Frequency range (MHz)	Limit (dBuV)														
	Quasi-peak	Average													
0.15-0.5	66 to 56*	56 to 46*													
0.5-5	56	46													
5-30	60	50													
Test setup:	<p>Remark E.U.T: Equipment Under Test LISN: Line Impedance Stabilization Network Test table height=0.8m</p>														
Test procedure:	<ol style="list-style-type: none"> 1. The E.U.T and simulators are connected to the main power through a line impedance stabilization network (L.I.S.N.). This provides a 50ohm/50uH coupling impedance for the measuring equipment. 2. The peripheral devices are also connected to the main power through a LISN that provides a 50ohm/50uH coupling impedance with 50ohm termination. (Please refer to the block diagram of the test setup and photographs). 3. Both sides of A.C. line are checked for maximum conducted interference. In order to find the maximum emission, the relative positions of equipment and all of the interface cables must be changed according to ANSI C63.10:2013 on conducted measurement. 														
Test Instruments:	Refer to section 6.0 for details														
Test mode:	Refer to section 5.3 for details														
Test results:	Pass														

Measurement data

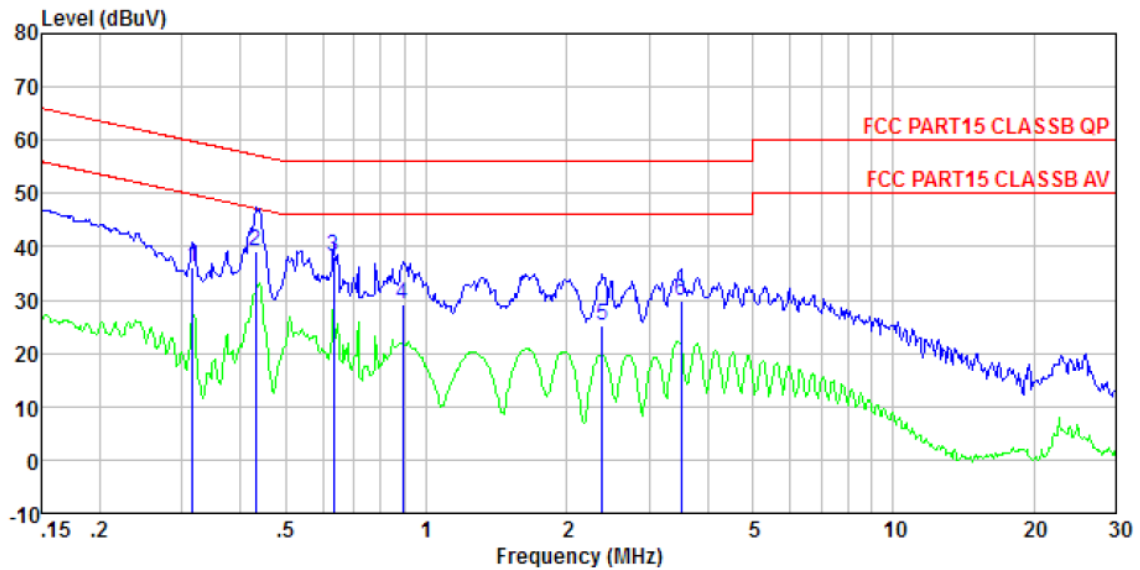
Line:



Site : Shielded room
 Condition : FCC PART15 CLASSB QP LISN-2013 LINE
 Job No. : 0177
 Test mode :
 Test Engineer: Boy

	Read Freq	Level	LISN Factor	Cable Loss	Level	Limit Line	Over Limit	Remark
	MHz	dBuV	dB	dB	dBuV	dBuV	dB	
1	0.317	39.97	0.11	0.10	40.18	59.80	-19.62	QP
2	0.440	40.53	0.12	0.11	40.76	57.07	-16.31	QP
3	0.634	38.28	0.13	0.13	38.54	56.00	-17.46	QP
4	0.779	32.66	0.14	0.13	32.93	56.00	-23.07	QP
5	3.173	35.23	0.17	0.15	35.55	56.00	-20.45	QP
6	3.436	36.02	0.18	0.15	36.35	56.00	-19.65	QP

Neutral:



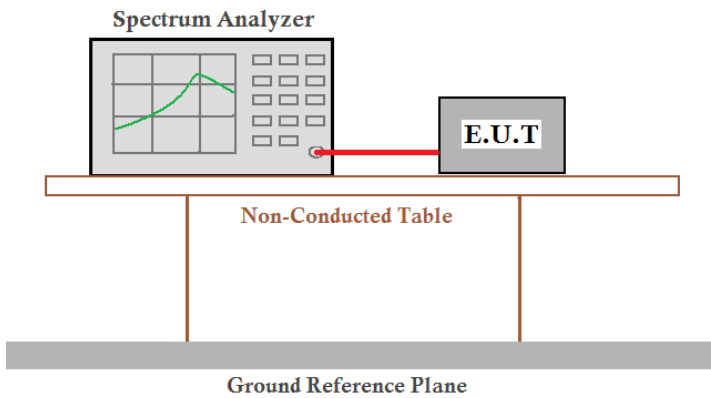
Site : Shielded room
 Condition : FCC PART15 CLASSB QP LISN-2013 NEUTRAL
 Job No. : 0177
 Test mode :
 Test Engineer: Boy

	Freq	Read Level	LISN Factor	Cable Loss	Level	Limit Line	Over Limit	Remark
	MHz	dBuV	dB	dB	dBuV	dBuV	dB	
1	0.317	36.09	0.06	0.10	36.25	59.80	-23.55	QP
2	0.431	39.06	0.06	0.11	39.23	57.24	-18.01	QP
3	0.634	38.03	0.07	0.13	38.23	56.00	-17.77	QP
4	0.890	28.95	0.07	0.13	29.15	56.00	-26.85	QP
5	2.384	25.06	0.10	0.15	25.31	56.00	-30.69	QP
6	3.509	29.60	0.13	0.15	29.88	56.00	-26.12	QP

Notes:

1. An initial pre-scan was performed on the line and neutral lines with peak detector.
2. Quasi-Peak and Average measurement were performed at the frequencies with maximized peak emission.
3. Final Level = Receiver Read level + LISN Factor + Cable Loss
4. If the average limit is met when using a quasi-peak detector receiver, the EUT shall be deemed to meet both limits and measurement with the average detector receiver is unnecessary.

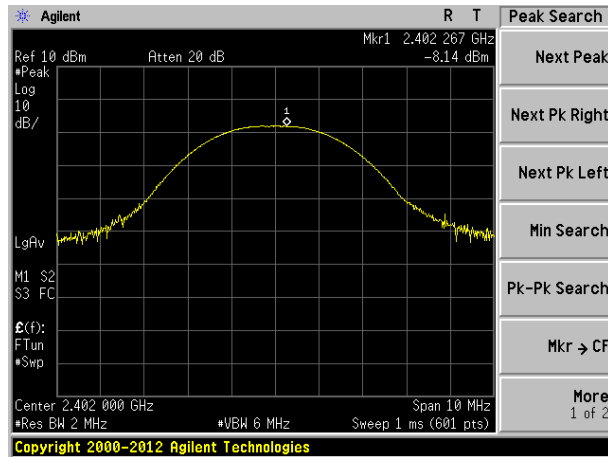
7.3 Conducted Output Power

Test Requirement:	FCC Part15 C Section 15.247 (b)(3)
Test Method:	ANSI C63.10:2013 and KDB558074 D01 DTS Meas Guidance V03
Limit:	30dBm
Test setup:	 <p>The diagram illustrates the test setup. A Spectrum Analyzer is connected to an E.U.T. (Equipment Under Test) via a red cable. Both are placed on a Non-Conducted Table, which sits on a Ground Reference Plane.</p>
Test Instruments:	Refer to section 6.0 for details
Test mode:	Refer to section 5.3 for details
Test results:	Pass

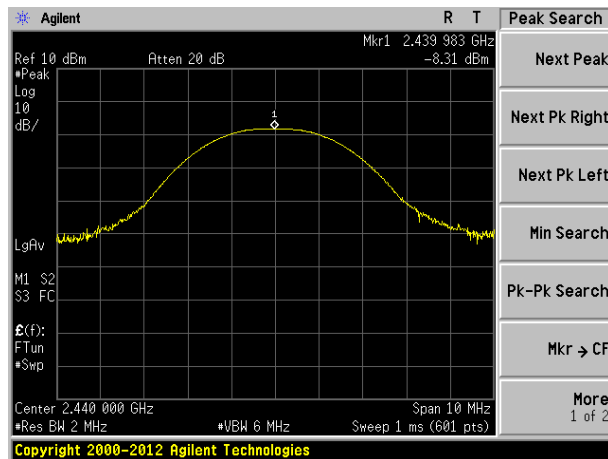
Measurement Data

Test channel	Peak Output Power (dBm)	Limit(dBm)	Result
Lowest	-8.14	30.00	Pass
Middle	-8.31		
Highest	-8.22		

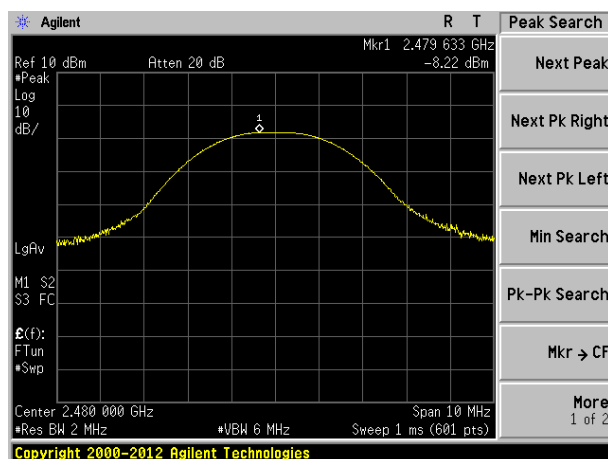
Test plot as follows:



Lowest channel

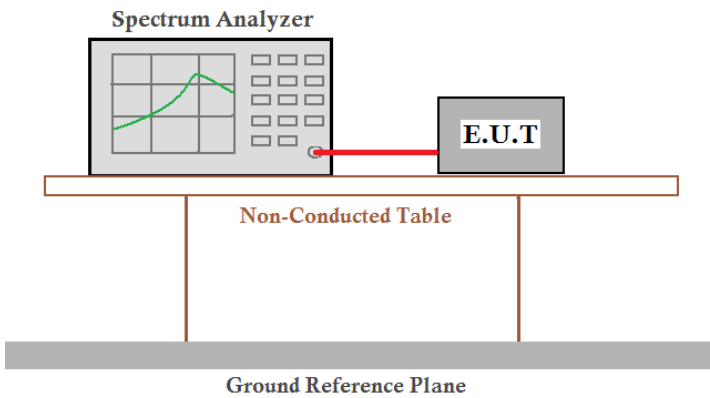


Middle channel



Highest channel

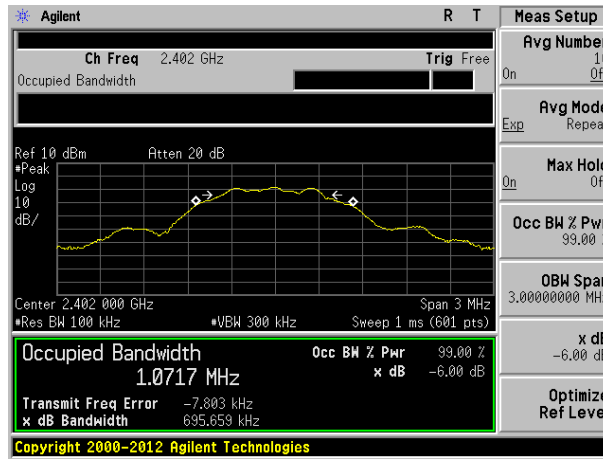
7.4 Channel Bandwidth

Test Requirement:	FCC Part15 C Section 15.247 (a)(2)
Test Method:	ANSI C63.10:2013 and KDB558074 D01 DTS Meas Guidance V03
Limit:	>500KHz
Test setup:	 <p>The diagram illustrates the test setup. A Spectrum Analyzer is connected to an E.U.T. (Equipment Under Test) via a red cable. Both are placed on a Non-Conducted Table, which is supported by a Ground Reference Plane.</p>
Test Instruments:	Refer to section 6.0 for details
Test mode:	Refer to section 5.3 for details
Test results:	Pass

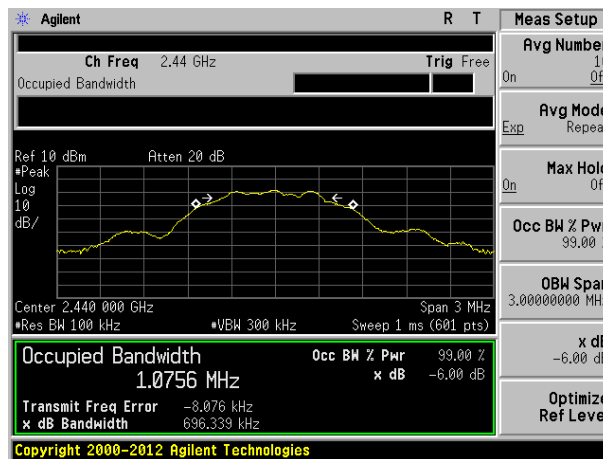
Measurement Data

Test channel	Channel Bandwidth (MHz)	Limit(KHz)	Result
Lowest	0.696	>500	Pass
Middle	0.696		
Highest	0.696		

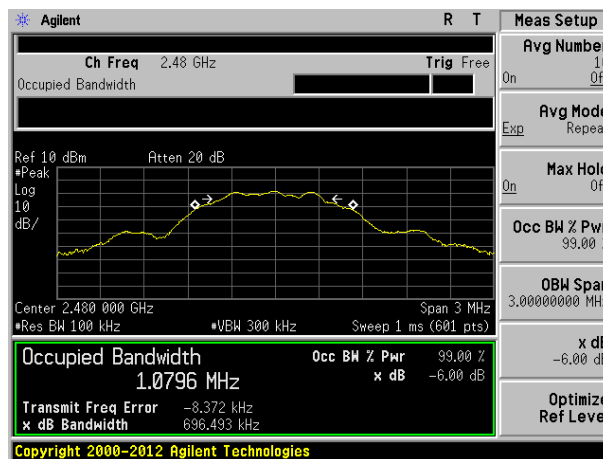
Test plot as follows:



Lowest channel

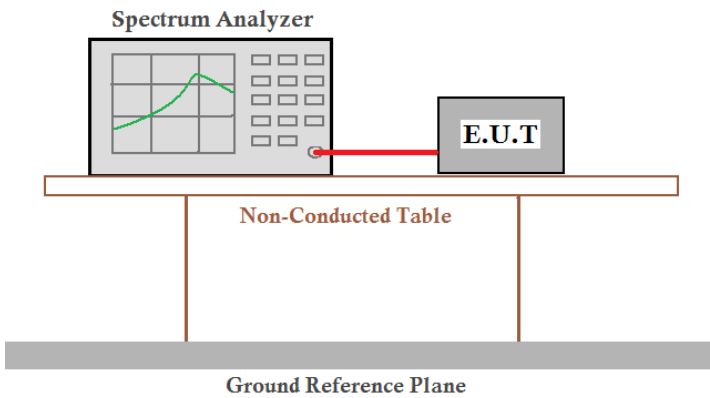


Middle channel



Highest channel

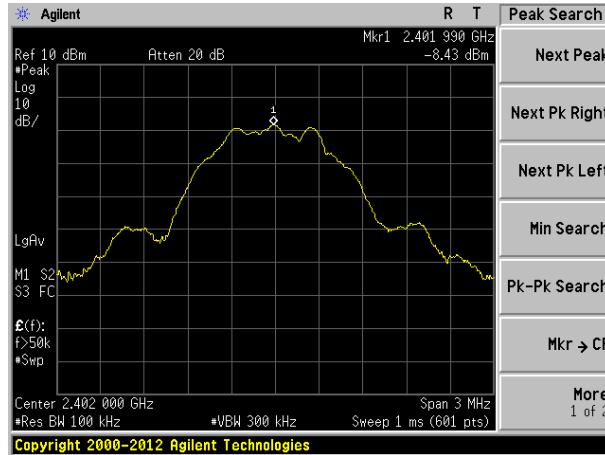
7.5 Power Spectral Density

Test Requirement:	FCC Part15 C Section 15.247 (e)
Test Method:	ANSI C63.10:2013 and KDB558074 D01 DTS Meas Guidance V03
Limit:	8dBm/3kHz
Test setup:	 <p>The diagram illustrates the test setup. A Spectrum Analyzer is connected to an E.U.T. (Equipment Under Test) via a red cable. Both are placed on a Non-Conducted Table, which is supported by a Ground Reference Plane.</p>
Test Instruments:	Refer to section 6.0 for details
Test mode:	Refer to section 5.3 for details
Test results:	Pass

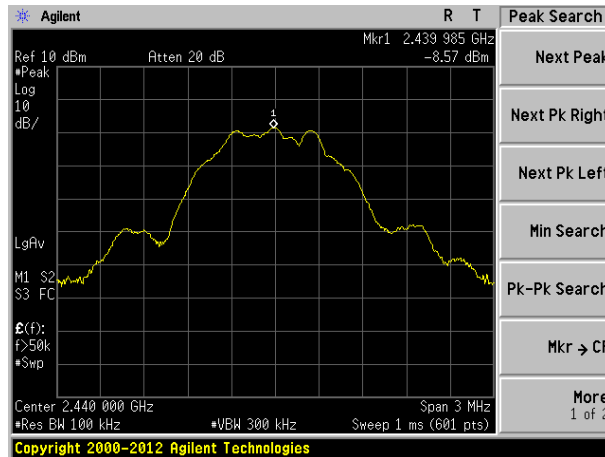
Measurement Data

Test channel	Power Spectral Density (dBm)	Limit(dBm/3kHz)	Result
Lowest	-8.43	8.00	Pass
Middle	-8.57		
Highest	-8.44		

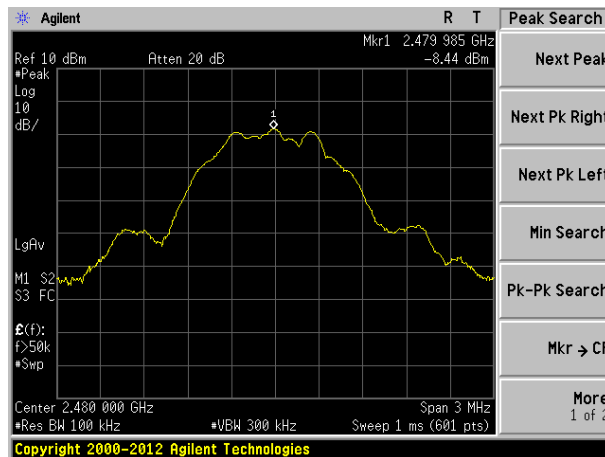
Test plot as follows:



Lowest channel



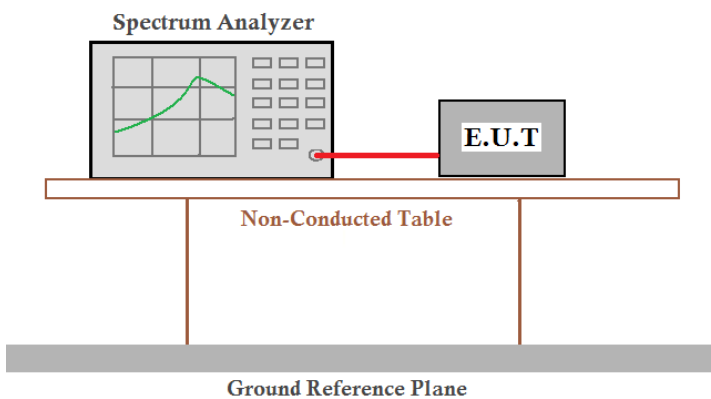
Middle channel



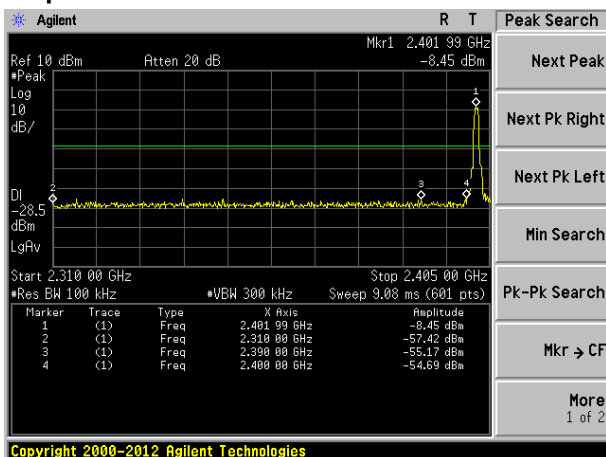
Highest channel

7.6 Band edges

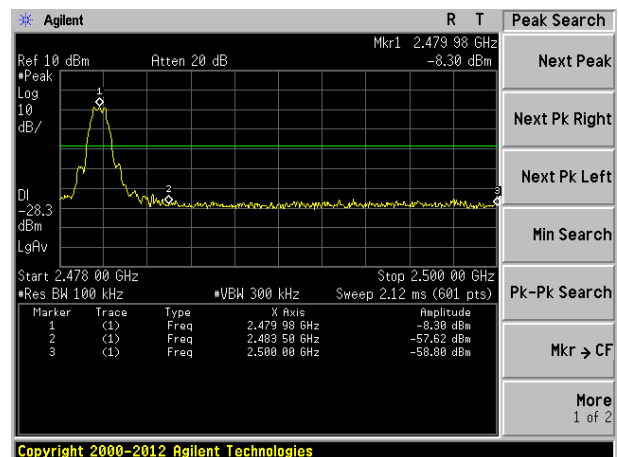
7.6.1 Conducted Emission Method

Test Requirement:	FCC Part15 C Section 15.247 (d)
Test Method:	ANSI C63.10:2013 and KDB558074 D01 DTS Meas Guidance V03
Limit:	In any 100 kHz bandwidth outside the frequency band in which the spread spectrum intentional radiator is operating, the radio frequency power that is produced by the intentional radiator shall be at least 20 dB below that in the 100 kHz bandwidth within the band that contains the highest level of the desired power, based on either an RF conducted or a radiated measurement.
Test setup:	 <p>The diagram illustrates the test setup. A Spectrum Analyzer is connected via a red cable to an Equipment Under Test (E.U.T.). Both are placed on a Non-Conducted Table. Below the table is a Ground Reference Plane.</p>
Test Instruments:	Refer to section 6.0 for details
Test mode:	Refer to section 5.3 for details
Test results:	Pass

Test plot as follows:



Lowest channel



Highest channel

7.6.2 Radiated Emission Method

Test Requirement:	FCC Part15 C Section 15.209 and 15.205				
Test Method:	ANSI C63.10:2013				
Test Frequency Range:	All of the restrict bands were tested, only the worst band's (2310MHz to 2500MHz) data was showed.				
Test site:	Measurement Distance: 3m				
Receiver setup:	Frequency	Detector	RBW	VBW	Value
	Above 1GHz	Peak	1MHz	3MHz	Peak
		RMS	1MHz	3MHz	Average
Limit:	Frequency		Limit (dBuV/m @3m)		Value
	Above 1GHz		54.00		Average
			74.00		Peak
Test setup:					
Test Procedure:	<ol style="list-style-type: none"> 1. The EUT was placed on the top of a rotating table 1.5 meters above the ground at a 3 meter camber. The table was rotated 360 degrees to determine the position of the highest radiation. 2. The EUT was set 3 meters away from the interference-receiving antenna, which was mounted on the top of a variable-height antenna tower. 3. The antenna height is varied from one meter to four meters above the ground to determine the maximum value of the field strength. Both horizontal and vertical polarizations of the antenna are set to make the measurement. 4. For each suspected emission, the EUT was arranged to its worst case and then the antenna was tuned to heights from 1 meter to 4 meters and the rota table was turned from 0 degrees to 360 degrees to find the maximum reading. 5. The test-receiver system was set to Peak Detect Function and Specified Bandwidth with Maximum Hold Mode. 6. If the emission level of the EUT in peak mode was 10dB lower than the limit specified, then testing could be stopped and the peak values of the EUT would be reported. Otherwise the emissions that did not have 10dB margin would be re-tested one by one using peak, quasi-peak or average method as specified and then reported in a data sheet. 7. The radiation measurements are performed in X, Y, Z axis positioning. And found the X axis positioning which it is worse case, only the test worst case mode is recorded in the report. 				
Test Instruments:	Refer to section 6.0 for details				
Test mode:	Refer to section 5.3 for details				
Test results:	Pass				

Measurement data:

Remark: The pre-test were performed on lowest, middle and highest frequencies, only the worst case's (lowest and highest frequencies) data was showed.

Test channel:	Lowest
---------------	--------

Peak value:

Frequency (MHz)	Read Level (dBuV)	Antenna Factor (dB/m)	Cable Loss (dB)	Preamp Factor (dB)	Level (dBuV/m)	Limit Line (dBuV/m)	Over Limit (dB)	Polarization
2390.00	38.68	27.59	5.38	30.18	41.47	74.00	-32.53	Horizontal
2400.00	54.87	27.58	5.39	30.18	57.66	74.00	-16.34	Horizontal
2390.00	38.83	27.59	5.38	30.18	41.62	74.00	-32.38	Vertical
2400.00	56.46	27.58	5.39	30.18	59.25	74.00	-14.75	Vertical

Average value:

Frequency (MHz)	Read Level (dBuV)	Antenna Factor (dB/m)	Cable Loss (dB)	Preamp Factor (dB)	Level (dBuV/m)	Limit Line (dBuV/m)	Over Limit (dB)	Polarization
2390.00	30.18	27.59	5.38	30.18	32.97	54.00	-21.03	Horizontal
2400.00	41.17	27.58	5.39	30.18	43.96	54.00	-10.04	Horizontal
2390.00	29.83	27.59	5.38	30.18	32.62	54.00	-21.38	Vertical
2400.00	42.42	27.58	5.39	30.18	45.21	54.00	-8.79	Vertical

Test channel:	Highest
---------------	---------

Peak value:

Frequency (MHz)	Read Level (dBuV)	Antenna Factor (dB/m)	Cable Loss (dB)	Preamp Factor (dB)	Level (dBuV/m)	Limit Line (dBuV/m)	Over Limit (dB)	Polarization
2483.50	40.29	27.53	5.47	29.93	43.36	74.00	-30.64	Horizontal
2500.00	40.26	27.55	5.49	29.93	43.37	74.00	-30.63	Horizontal
2483.50	40.43	27.53	5.47	29.93	43.50	74.00	-30.50	Vertical
2500.00	40.86	27.55	5.49	29.93	43.97	74.00	-30.03	Vertical

Average value:

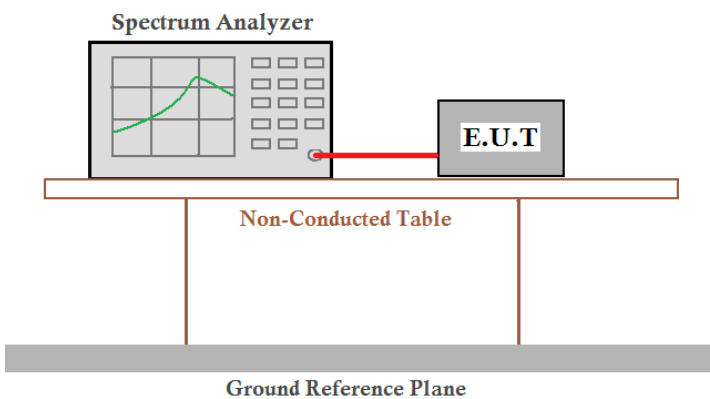
Frequency (MHz)	Read Level (dBuV)	Antenna Factor (dB/m)	Cable Loss (dB)	Preamp Factor (dB)	Level (dBuV/m)	Limit Line (dBuV/m)	Over Limit (dB)	Polarization
2483.50	32.96	27.53	5.47	29.93	36.03	54.00	-17.97	Horizontal
2500.00	31.56	27.55	5.49	29.93	34.67	54.00	-19.33	Horizontal
2483.50	33.82	27.53	5.47	29.93	36.89	54.00	-17.11	Vertical
2500.00	31.13	27.55	5.49	29.93	34.24	54.00	-19.76	Vertical

Remark:

1. Final Level = Receiver Read level + Antenna Factor + Cable Loss – Pre-amplifier Factor
2. The emission levels of other frequencies are very lower than the limit and not show in test report.

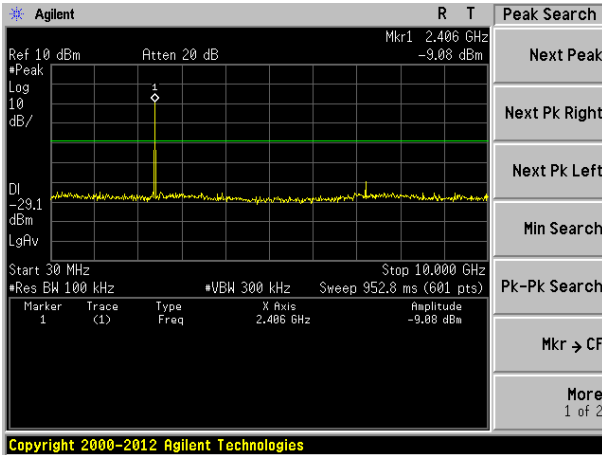
7.7 Spurious Emission

7.7.1 Conducted Emission Method

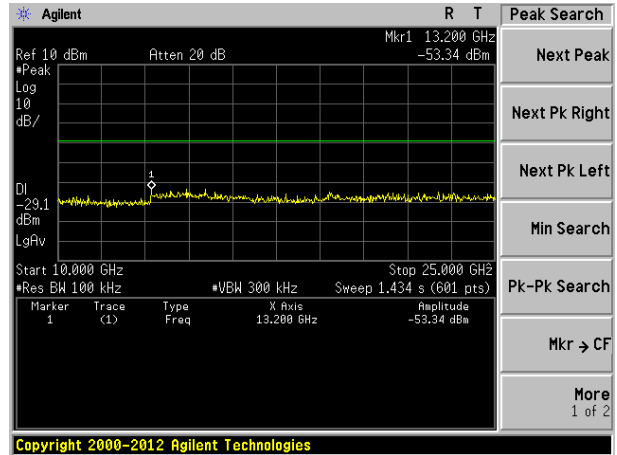
Test Requirement:	FCC Part15 C Section 15.247 (d)
Test Method:	ANSI C63.10:2013 and KDB558074 D01 DTS Meas Guidance V03
Limit:	In any 100 kHz bandwidth outside the frequency band in which the spread spectrum intentional radiator is operating, the radio frequency power that is produced by the intentional radiator shall be at least 20 dB below that in the 100 kHz bandwidth within the band that contains the highest level of the desired power, based on either an RF conducted or a radiated measurement.
Test setup:	 <p>The diagram illustrates the test setup. A Spectrum Analyzer is connected to an E.U.T. (Equipment Under Test) via a red cable. Both the Spectrum Analyzer and the E.U.T. are placed on a Non-Conducted Table. The table is supported by two legs. Below the table is a Ground Reference Plane.</p>
Test Instruments:	Refer to section 6.0 for details
Test mode:	Refer to section 5.3 for details
Test results:	Pass

Test plot as follows:

Lowest channel

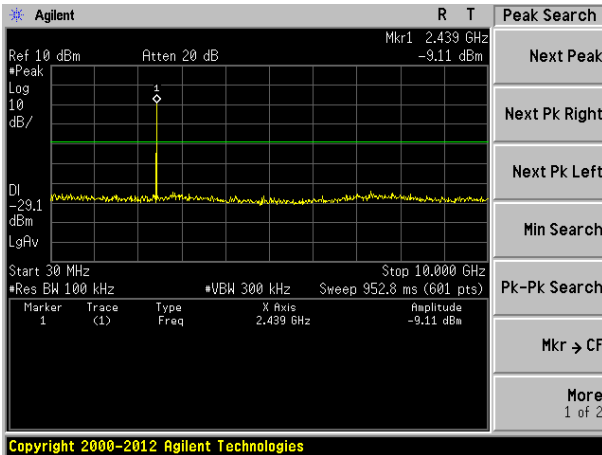


30MHz~10GHz

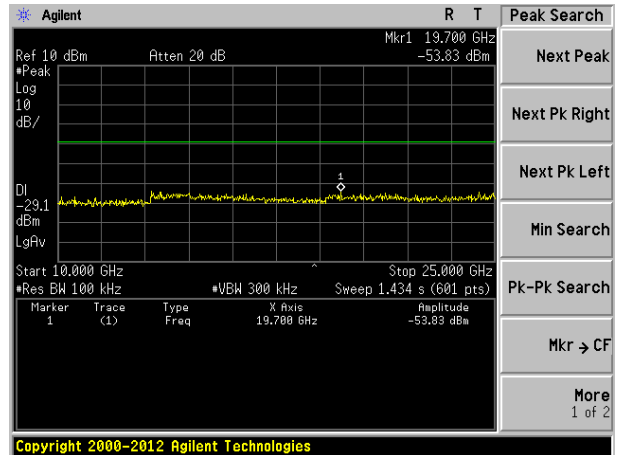


10GHz~25GHz

Middle channel

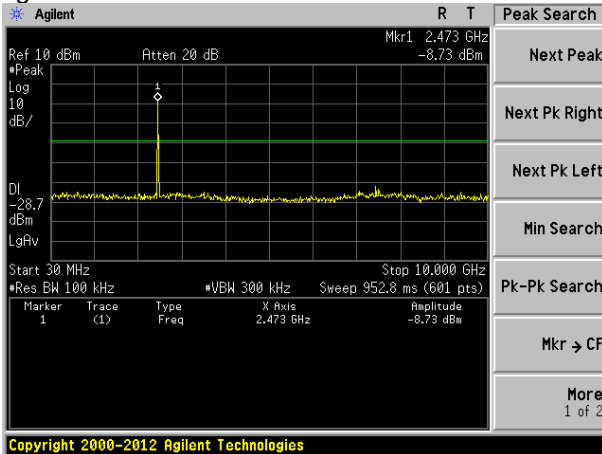


30MHz~10GHz

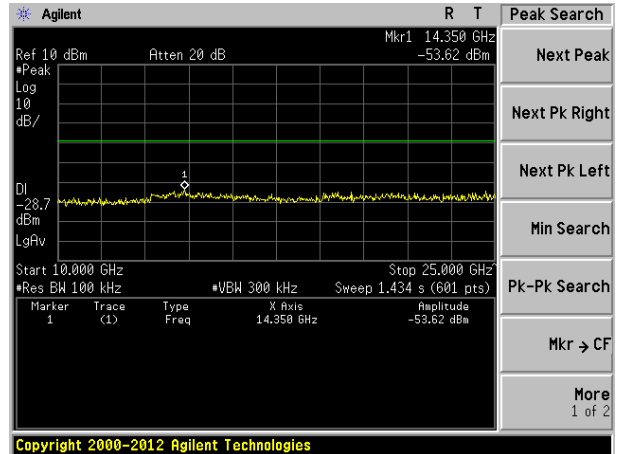


10GHz~25GHz

Highest channel



30MHz~10GHz



10GHz~25GHz

7.7.2 Radiated Emission Method

Test Requirement:	FCC Part15 C Section 15.209				
Test Method:	ANSI C63.10:2013				
Test Frequency Range:	30MHz to 25GHz				
Test site:	Measurement Distance: 3m				
Receiver setup:	Frequency	Detector	RBW	VBW	Value
	30MHz-1GHz	Quasi-peak	120KHz	300KHz	Quasi-peak
	Above 1GHz	Peak	1MHz	3MHz	Peak
RMS		1MHz	3MHz	Average	
Limit:	Frequency	Limit (dBuV/m @3m)		Value	
	30MHz-88MHz	40.00		Quasi-peak	
	88MHz-216MHz	43.50		Quasi-peak	
	216MHz-960MHz	46.00		Quasi-peak	
	960MHz-1GHz	54.00		Quasi-peak	
	Above 1GHz	54.00		Average	
74.00		Peak			
Test setup:	Below 1GHz				
	<p>The diagram illustrates the test setup for frequencies below 1GHz. It shows an Equipment Under Test (EUT) placed on a turntable at a height of 80cm. A test antenna is positioned at a distance of 3m from the EUT and at a height of 1m to 4m. The antenna is connected to a receiver with a preamplifier. The setup is enclosed in a shielded chamber.</p>				
Above 1GHz					

<p>Test Procedure:</p>	<ol style="list-style-type: none"> 1. The EUT was placed on the top of a rotating table (0.8 meters below 1G and 1.5 meters above 1G) above the ground at a 3 meter camber. The table was rotated 360 degrees to determine the position of the highest radiation. 2. The EUT was set 3 meters away from the interference-receiving antenna, which was mounted on the top of a variable-height antenna tower. 3. The antenna height is varied from one meter to four meters above the ground to determine the maximum value of the field strength. Both horizontal and vertical polarizations of the antenna are set to make the measurement. 4. For each suspected emission, the EUT was arranged to its worst case and then the antenna was tuned to heights from 1 meter to 4 meters and the rota table was turned from 0 degrees to 360 degrees to find the maximum reading. 5. The test-receiver system was set to Peak Detect Function and Specified Bandwidth with Maximum Hold Mode. 6. If the emission level of the EUT in peak mode was 10dB lower than the limit specified, then testing could be stopped and the peak values of the EUT would be reported. Otherwise the emissions that did not have 10dB margin would be re-tested one by one using peak, quasi-peak or average method as specified and then reported in a data sheet. 7. The radiation measurements are performed in X, Y, Z axis positioning. And found the Y axis positioning which it is worse case, only the test worst case mode is recorded in the report.
<p>Test Instruments:</p>	<p>Refer to section 6.0 for details</p>
<p>Test mode:</p>	<p>Refer to section 5.3 for details</p>
<p>Test results:</p>	<p>Pass</p>

Remark:

Pre-scan all kind of the place mode (X-axis, Y-axis, Z-axis), and found the Y-axis which it is worse case.

Measurement Data

■ Below 1GHz

Frequency (MHz)	Read Level (dBuV)	Antenna Factor (dB/m)	Cable Loss (dB)	Preamp Factor (dB)	Level (dBuV/m)	Limit Line (dBuV/m)	Over Limit (dB)	polarization
49.88	47.76	15.26	0.77	30.00	33.79	40.00	-6.21	Vertical
99.88	50.90	15.16	1.19	29.70	37.55	43.50	-5.95	Vertical
208.58	52.25	12.84	1.89	29.29	37.69	43.50	-5.81	Vertical
292.06	49.15	14.89	2.32	29.95	36.41	46.00	-9.59	Vertical
375.94	50.51	16.56	2.75	29.61	40.21	46.00	-5.79	Vertical
793.40	38.20	21.96	4.43	29.20	35.39	46.00	-10.61	Vertical
51.84	44.99	15.16	0.79	29.98	30.96	40.00	-9.04	Horizontal
100.23	43.19	15.11	1.19	29.70	29.79	43.50	-13.71	Horizontal
125.01	51.23	11.70	1.40	29.54	34.79	43.50	-8.71	Horizontal
375.94	45.04	16.56	2.75	29.61	34.74	46.00	-11.26	Horizontal
459.11	44.13	17.59	3.13	29.38	35.47	46.00	-10.53	Horizontal
897.00	42.07	23.05	4.83	29.10	40.85	46.00	-5.15	Horizontal

■ Above 1GHz

Test channel:	Lowest
---------------	--------

Peak value:

Frequency (MHz)	Read Level (dBuV)	Antenna Factor (dB/m)	Cable Loss (dB)	Preamp Factor (dB)	Level (dBuV/m)	Limit Line (dBuV/m)	Over Limit (dB)	polarization
4804.00	37.81	31.78	8.60	32.09	46.10	74.00	-27.90	Vertical
7206.00	32.16	36.15	11.65	32.00	47.96	74.00	-26.04	Vertical
9608.00	31.77	37.95	14.14	31.62	52.24	74.00	-21.76	Vertical
12010.00	*					74.00		Vertical
14412.00	*					74.00		Vertical
4804.00	42.20	31.78	8.60	32.09	50.49	74.00	-23.51	Horizontal
7206.00	33.96	36.15	11.65	32.00	49.76	74.00	-24.24	Horizontal
9608.00	31.24	37.95	14.14	31.62	51.71	74.00	-22.29	Horizontal
12010.00	*					74.00		Horizontal
14412.00	*					74.00		Horizontal

Average value:

Frequency (MHz)	Read Level (dBuV)	Antenna Factor (dB/m)	Cable Loss (dB)	Preamp Factor (dB)	Level (dBuV/m)	Limit Line (dBuV/m)	Over Limit (dB)	polarization
4804.00	26.53	31.78	8.60	32.09	34.82	54.00	-19.18	Vertical
7206.00	20.79	36.15	11.65	32.00	36.59	54.00	-17.41	Vertical
9608.00	19.84	37.95	14.14	31.62	40.31	54.00	-13.69	Vertical
12010.00	*					54.00		Vertical
14412.00	*					54.00		Vertical
4804.00	30.81	31.78	8.60	32.09	39.10	54.00	-14.90	Horizontal
7206.00	23.00	36.15	11.65	32.00	38.80	54.00	-15.20	Horizontal
9608.00	19.61	37.95	14.14	31.62	40.08	54.00	-13.92	Horizontal
12010.00	*					54.00		Horizontal
14412.00	*					54.00		Horizontal

Remark:

1. Final Level = Receiver Read level + Antenna Factor + Cable Loss – Pre-amplifier Factor
2. “*”, means this data is too weak instrument of signal is unable to test.

Test channel:	Middle
---------------	--------

Peak value:

Frequency (MHz)	Read Level (dBuV)	Antenna Factor (dB/m)	Cable Loss (dB)	Preamp Factor (dB)	Level (dBuV/m)	Limit Line (dBuV/m)	Over Limit (dB)	polarization
4880.00	37.35	31.85	8.67	32.12	45.75	74.00	-28.25	Vertical
7320.00	31.86	36.37	11.72	31.89	48.06	74.00	-25.94	Vertical
9760.00	31.49	38.35	14.25	31.62	52.47	74.00	-21.53	Vertical
12200.00	*					74.00		Vertical
14640.00	*					74.00		Vertical
4880.00	41.64	31.85	8.67	32.12	50.04	74.00	-23.96	Horizontal
7320.00	33.62	36.37	11.72	31.89	49.82	74.00	-24.18	Horizontal
9760.00	30.92	38.35	14.25	31.62	51.90	74.00	-22.10	Horizontal
12200.00	*					74.00		Horizontal
14640.00	*					74.00		Horizontal

Average value:

Frequency (MHz)	Read Level (dBuV)	Antenna Factor (dB/m)	Cable Loss (dB)	Preamp Factor (dB)	Level (dBuV/m)	Limit Line (dBuV/m)	Over Limit (dB)	polarization
4880.00	26.17	31.85	8.67	32.12	34.57	54.00	-19.43	Vertical
7320.00	20.55	36.37	11.72	31.89	36.75	54.00	-17.25	Vertical
9760.00	19.62	38.35	14.25	31.62	40.60	54.00	-13.40	Vertical
12200.00	*					54.00		Vertical
14640.00	*					54.00		Vertical
4880.00	30.40	31.85	8.67	32.12	38.80	54.00	-15.20	Horizontal
7320.00	22.73	36.37	11.72	31.89	38.93	54.00	-15.07	Horizontal
9760.00	19.36	38.35	14.25	31.62	40.34	54.00	-13.66	Horizontal
12200.00	*					54.00		Horizontal
14640.00	*					54.00		Horizontal

Remark:

1. Final Level = Receiver Read level + Antenna Factor + Cable Loss – Pre-amplifier Factor
2. “*”, means this data is the too weak instrument of signal is unable to test.

Test channel:	Highest
---------------	---------

Peak value:

Frequency (MHz)	Read Level (dBuV)	Antenna Factor (dB/m)	Cable Loss (dB)	Preamp Factor (dB)	Level (dBuV/m)	Limit Line (dBuV/m)	Over Limit (dB)	polarization
4960.00	36.64	31.93	8.73	32.16	45.14	74.00	-28.86	Vertical
7440.00	31.39	36.59	11.79	31.78	47.99	74.00	-26.01	Vertical
9920.00	31.08	38.81	14.38	31.88	52.39	74.00	-21.61	Vertical
12400.00	*					74.00		Vertical
14880.00	*					74.00		Vertical
4960.00	40.80	31.93	8.73	32.16	49.30	74.00	-24.70	Horizontal
7440.00	33.09	36.59	11.79	31.78	49.69	74.00	-24.31	Horizontal
9920.00	30.44	38.81	14.38	31.88	51.75	74.00	-22.25	Horizontal
12400.00	*					74.00		Horizontal
14880.00	*					74.00		Horizontal

Average value:

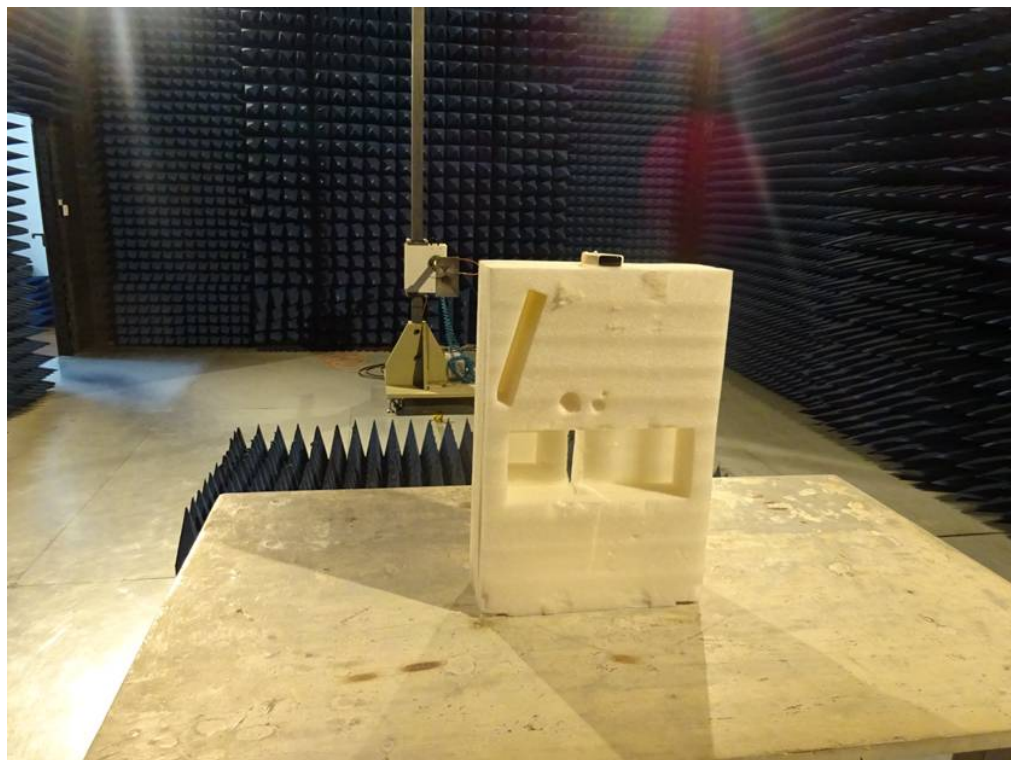
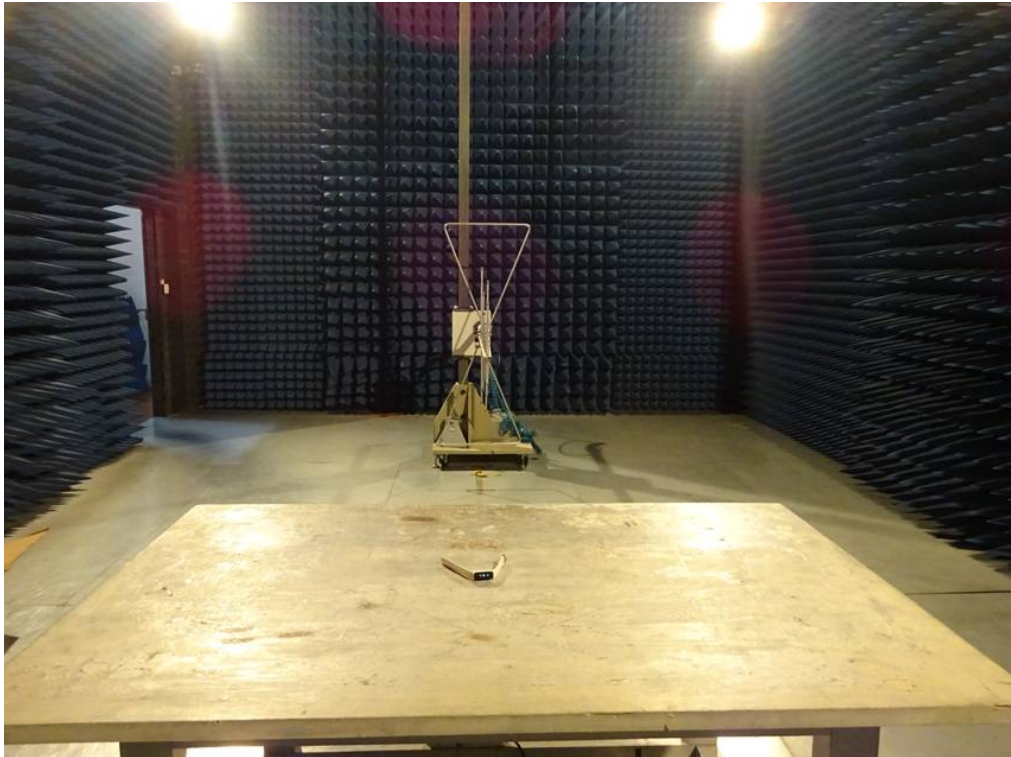
Frequency (MHz)	Read Level (dBuV)	Antenna Factor (dB/m)	Cable Loss (dB)	Preamp Factor (dB)	Level (dBuV/m)	Limit Line (dBuV/m)	Over Limit (dB)	polarization
4960.00	25.65	31.93	8.73	32.16	34.15	54.00	-19.85	Vertical
7440.00	20.20	36.59	11.79	31.78	36.80	54.00	-17.20	Vertical
9920.00	19.31	38.81	14.38	31.88	40.62	54.00	-13.38	Vertical
12400.00	*					54.00		Vertical
14880.00	*					54.00		Vertical
4960.00	29.81	31.93	8.73	32.16	38.31	54.00	-15.69	Horizontal
7440.00	22.33	36.59	11.79	31.78	38.93	54.00	-15.07	Horizontal
9920.00	18.99	38.81	14.38	31.88	40.30	54.00	-13.70	Horizontal
12400.00	*					54.00		Horizontal
14880.00	*					54.00		Horizontal

Remark:

1. Final Level = Receiver Read level + Antenna Factor + Cable Loss – Pre-amplifier Factor
2. “*”, means this data is the too weak instrument of signal is unable to test.

8 Test Setup Photo

Radiated Emission

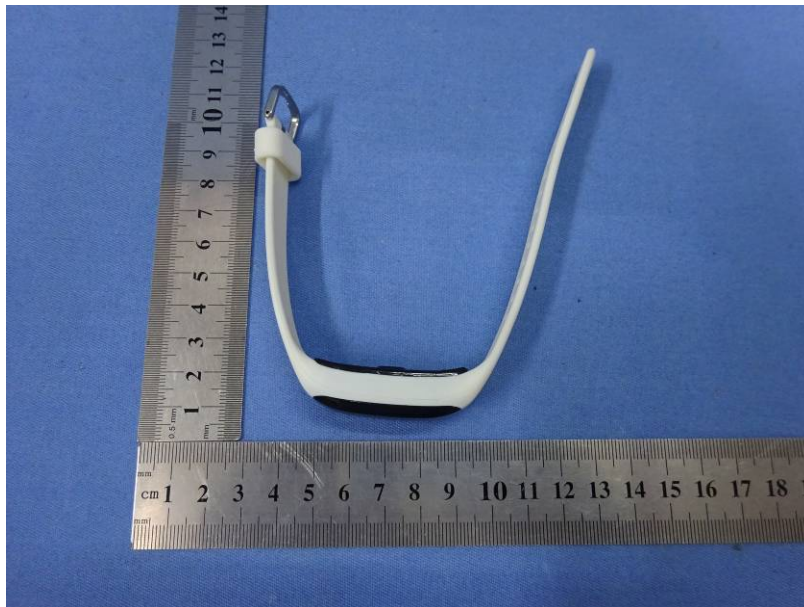
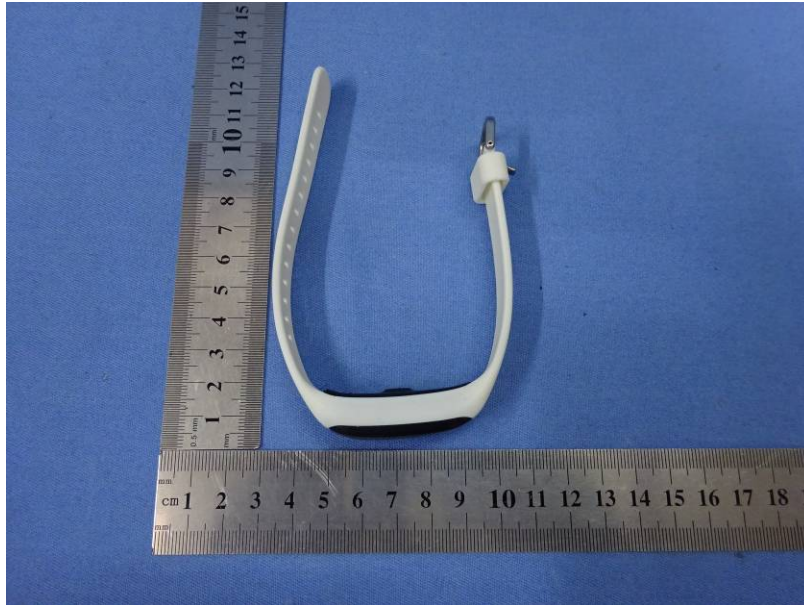


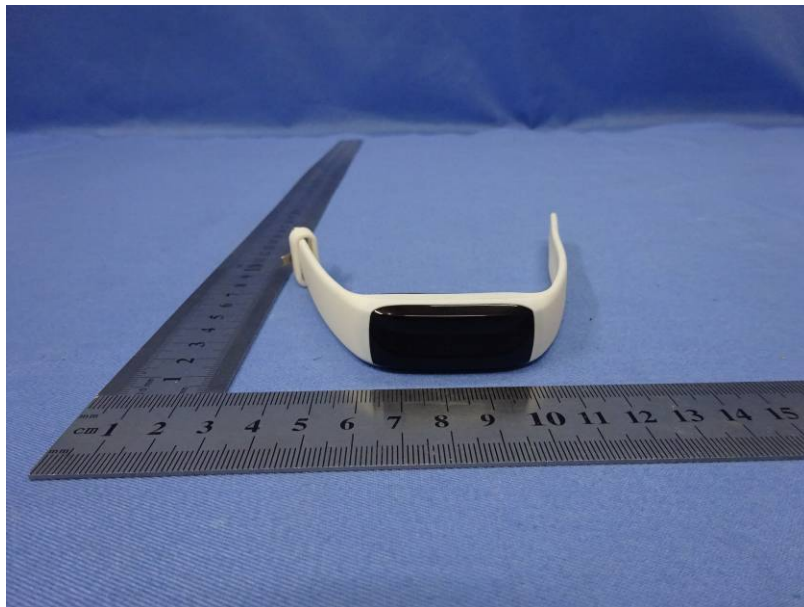
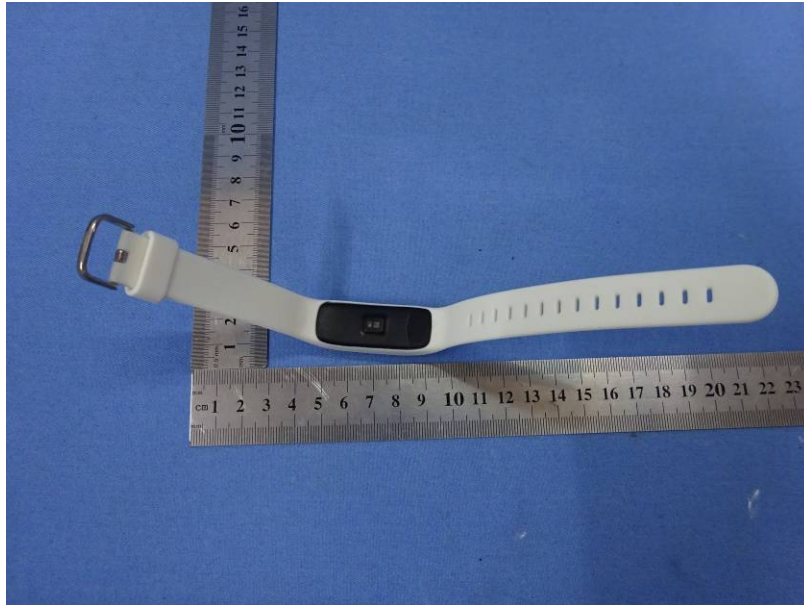
Conducted Emission



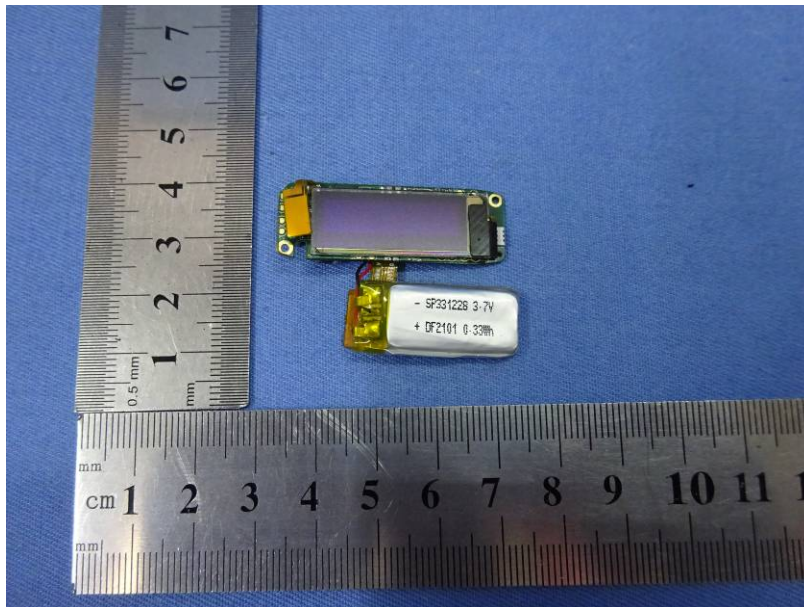
9 EUT Constructional Details

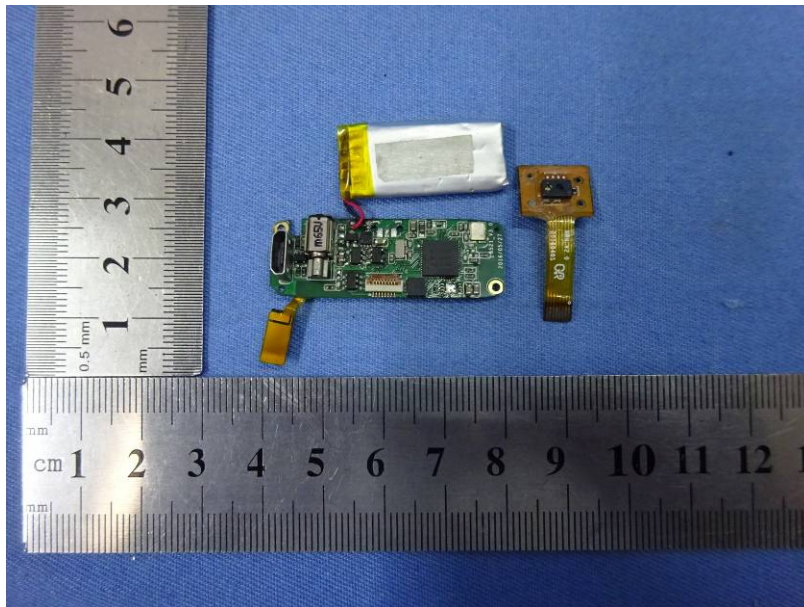
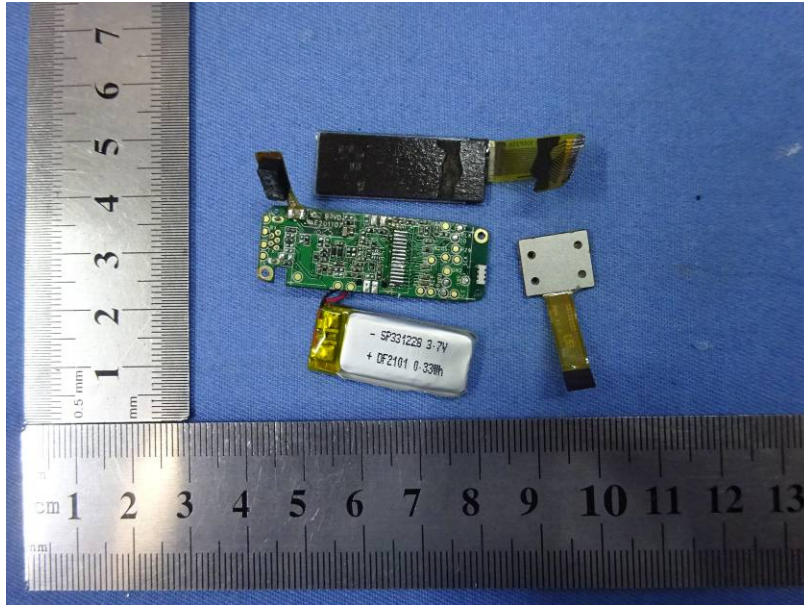












-----End-----