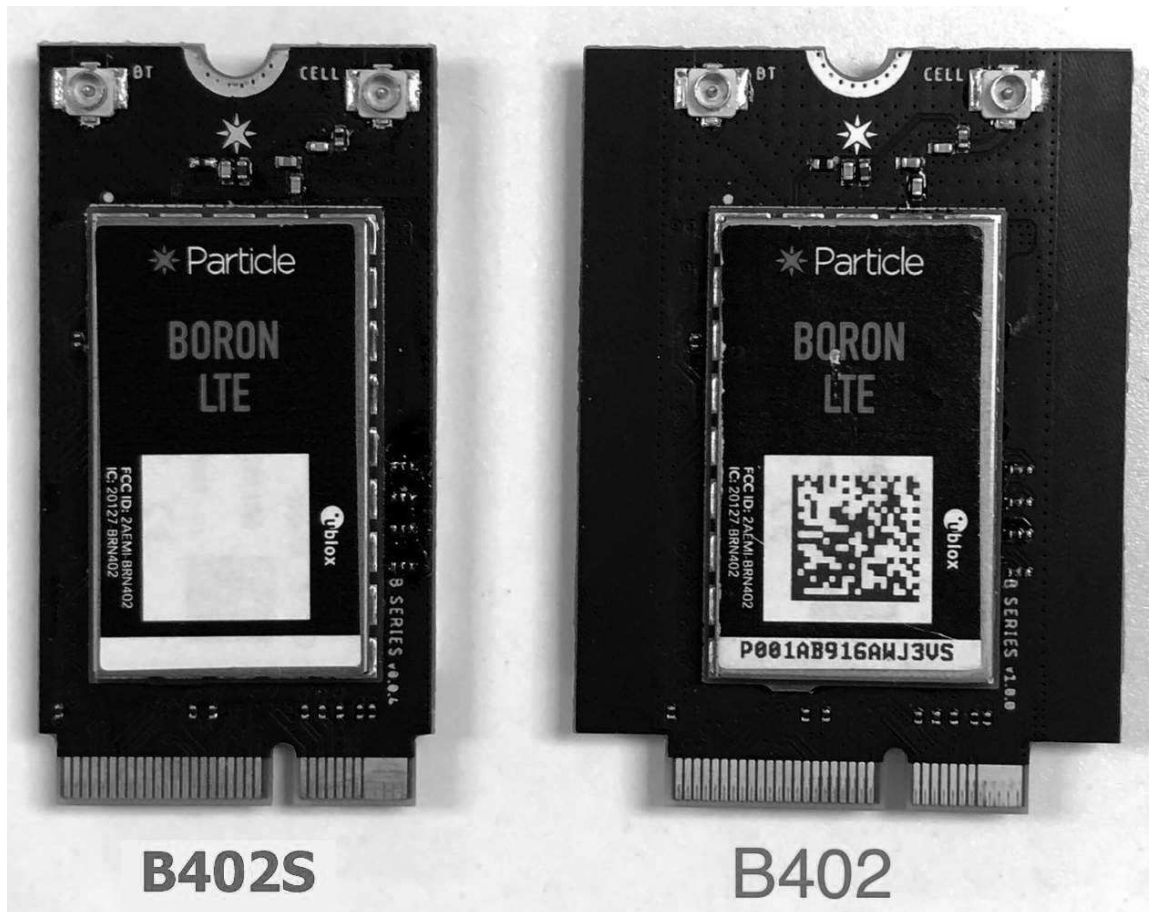


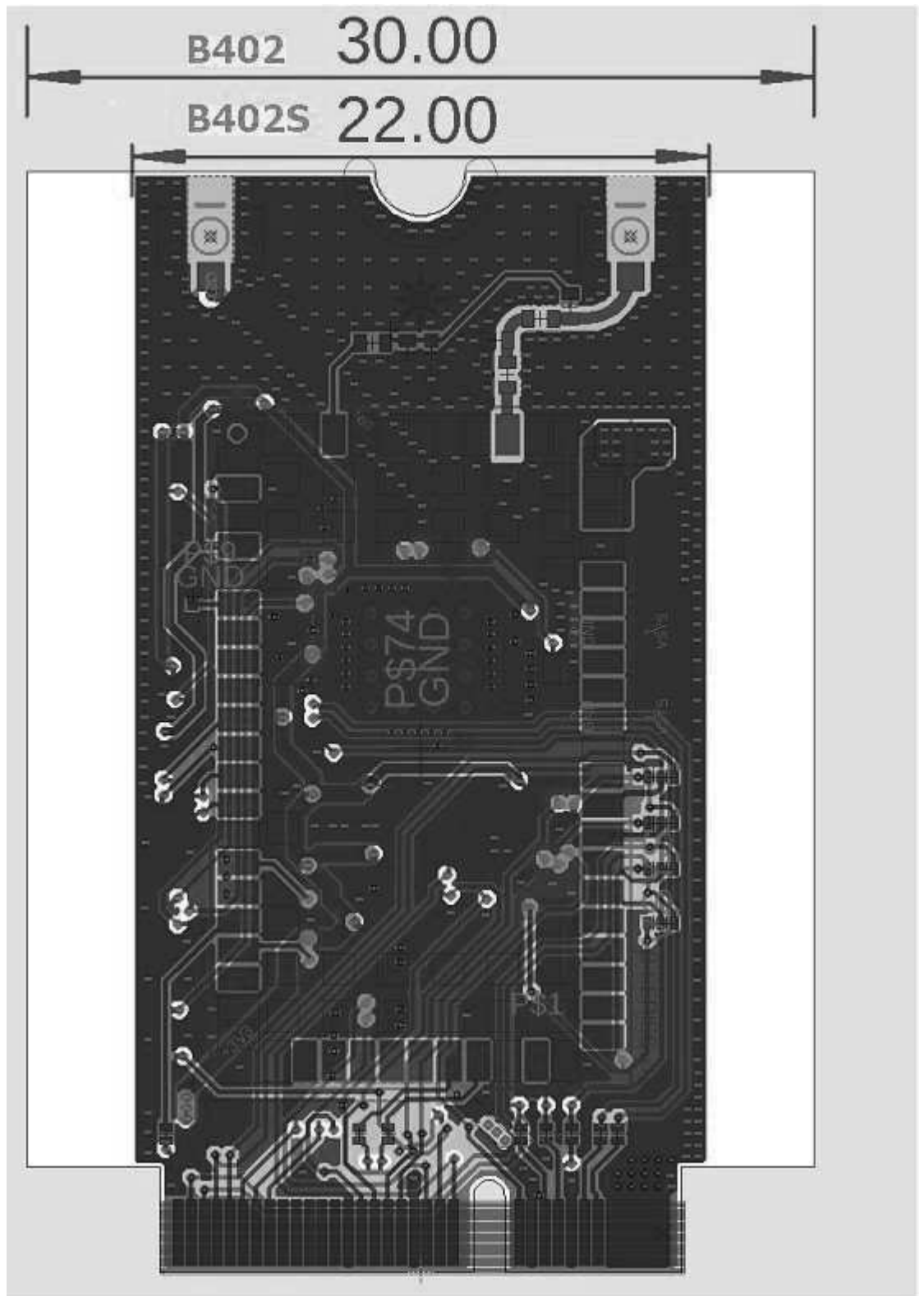
Difference between B402 and B402S



The difference between B402 and B402S is only the width of the edge of the board. The B402S is 22mm wide and the B402 is 30mm wide.

The B402S is widened by 8mm on the basis of the B402. The widened part does not have any traces and copper metal.

As shown in the PCB layout screenshot below, there are only non-metallic edge differences between the two models (the black border is the B402 edge).



Signature: *Fu*

2019-7-12