

1 2 3 4 5 6 7 8 9 10
1 2 3 4 5 6 7 8
ACE 27095

5G0 5G1 5G2 5G3 6G0 6G1 6G2 6G3 2G0 2G1

SHF 1 SHF 2 SHF 3 SHF 4

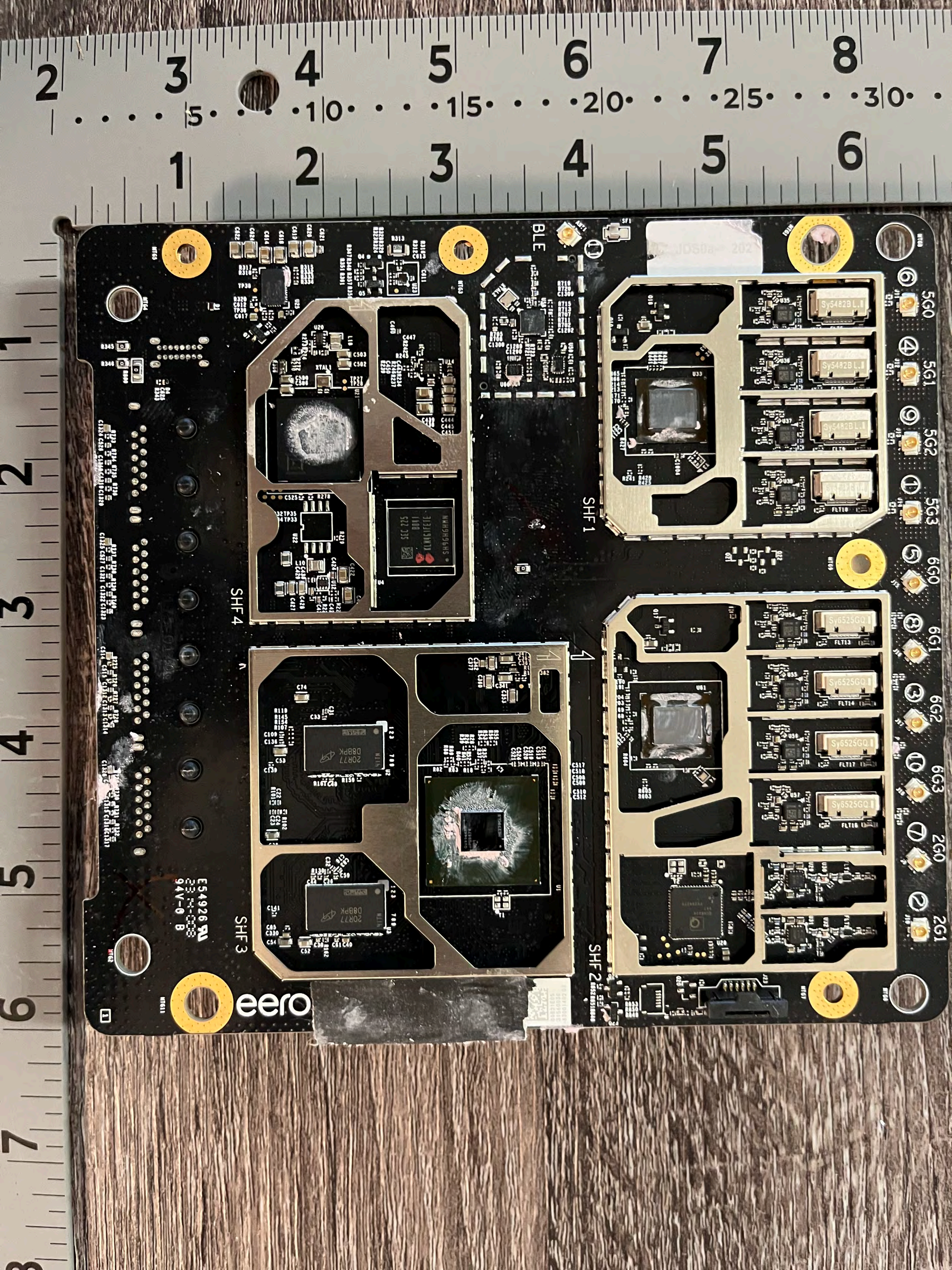
BLE

NTG0 NTG1 NTG2 NTG3 NTG4 NTG5 NTG6 NTG7 NTG8

8 0-9V 54926

eero

1	12.17	17.09	16.1/4	24.5/16	11.3/16	11.5/16
2	12.37	17.23	16.1/2	24.3/4	11.5/8	11.13/16
3	12.65	17.44	16.7/8	25.5/16	11.3/8	11.11/16
4	13.00	17.69	17.5/16	26.00	11.1/16	11.1/2
5	13.42	18.00	17.7/8	26.13/16	10.3/4	11.5/16
6	13.89	18.36	18.1/2	27.13/16	10.3/8	11.1/16
7	14.42	18.76	18.1/4	28.7/8	10.00	10.7/8
8	14.89	19.16	18.3/4	29.7/8	10.00	10.7/8



1

2

3

4

5

6

3

4

5

6

7

8

ES4926 RU
23 14 008
94V-0 B

eero

SHF 3

SHF 4

SHF 2

SHF 1

BLE

5G0
5G1
5G2
5G3
6G0
6G1
6G2
6G3
2G0
2G1