

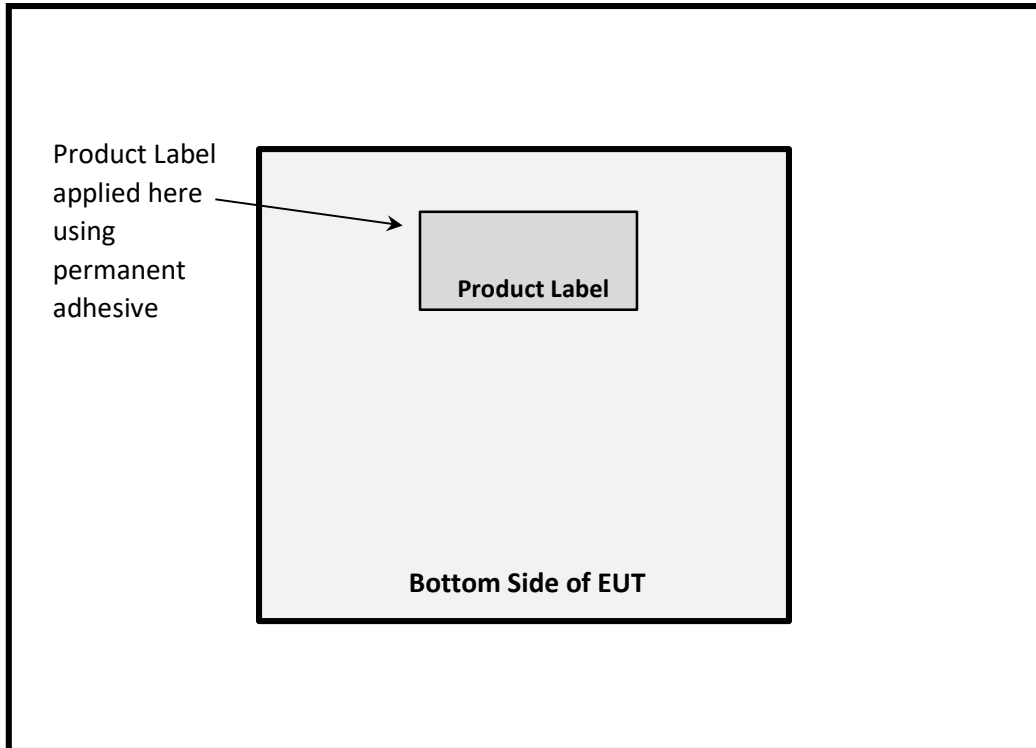
**Label Exhibit**

**eero Model V010001**

**FCC ID: 2AEM4-711917312**

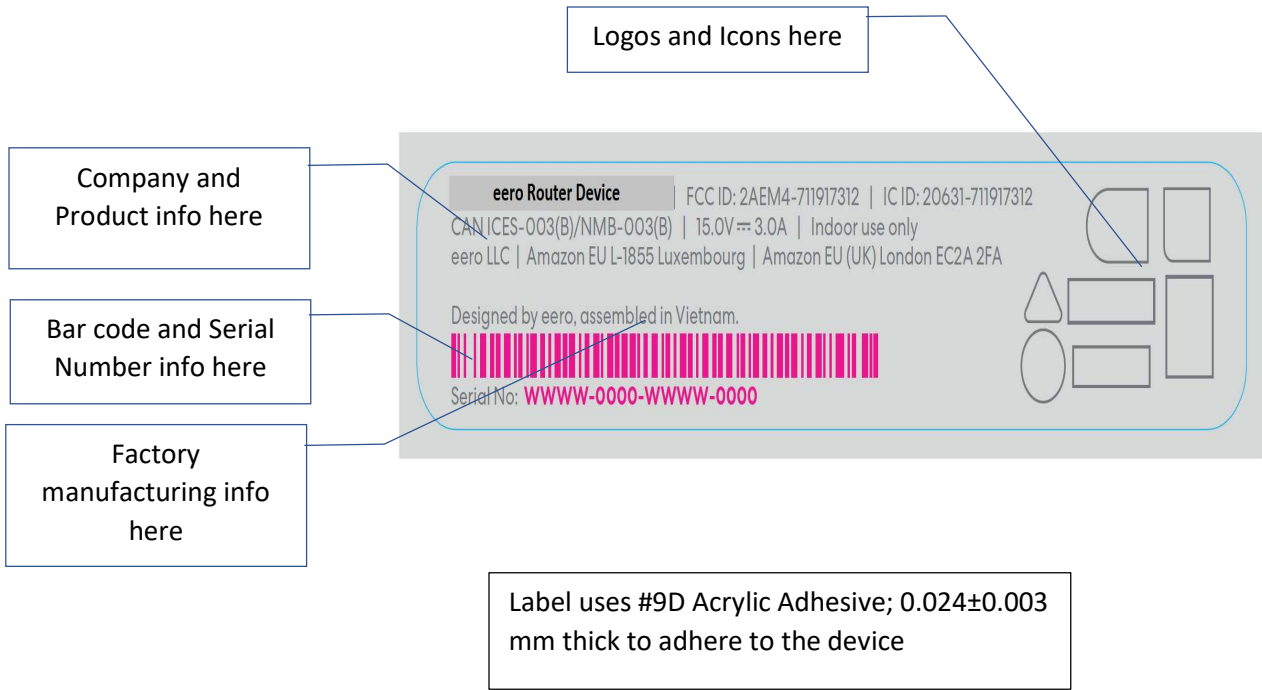
**IC: 20631-711917312**

**Label Location:**



## Label Artwork

(preliminary Draft)



## **Electronic Labeling; and Overview**

As eero/Amazon expands into more International markets and makes use of a single, common hardware SKU across all regions, it becomes impracticable to fit all the necessary regulatory markings and information on the product label.

So eero is making a move to electronic labeling starting with this new Model.

The user of the eero device controls the function through the eero App running on their smartphone. This is the only means to communicate with the device, acting as the electric front panel.

Through the eero App the user has the ability to monitor status and performance of all the devices on their network.

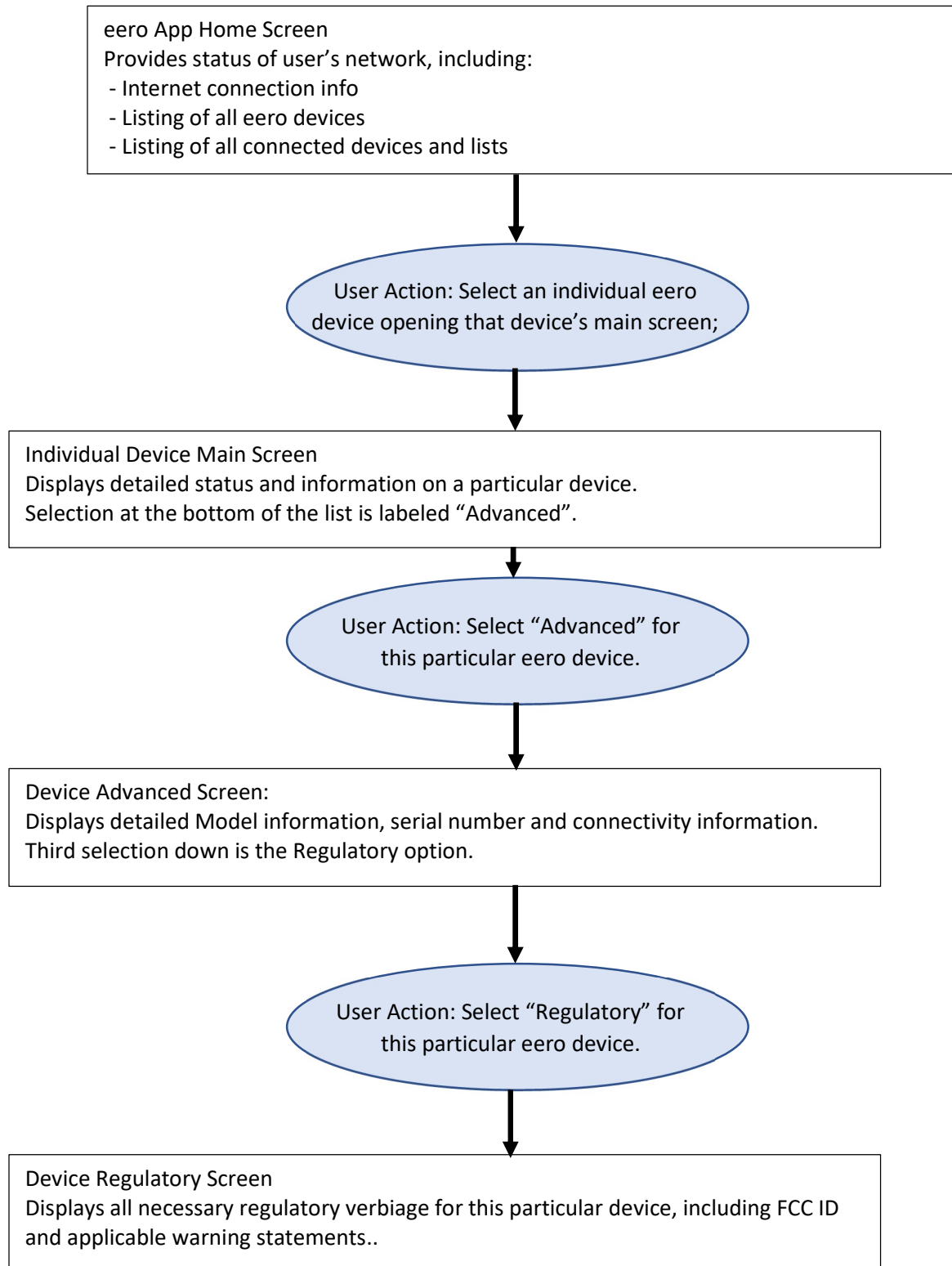
(The user has very limited abilities to adjust parameters and can only modify basic settings related to naming, etc. For more detail, see eero's exhibits for their Software Configuration Control per KDB 594280 D01 and U-NII Device SW Security Statement per KDB 594280 D02, provided separately as part of this Grant submittal.)

This same eero App provides the medium for the user to access all the necessary regulatory statements including, but not limited to the FCC labeling requirements for this type of device as given in CFR 47 15.19 (a)(3) and 47 CFR 15.407(d)(4).

The following sections illustrate the process flow followed by the user within the App and provides screenshots from the current working version of the App.

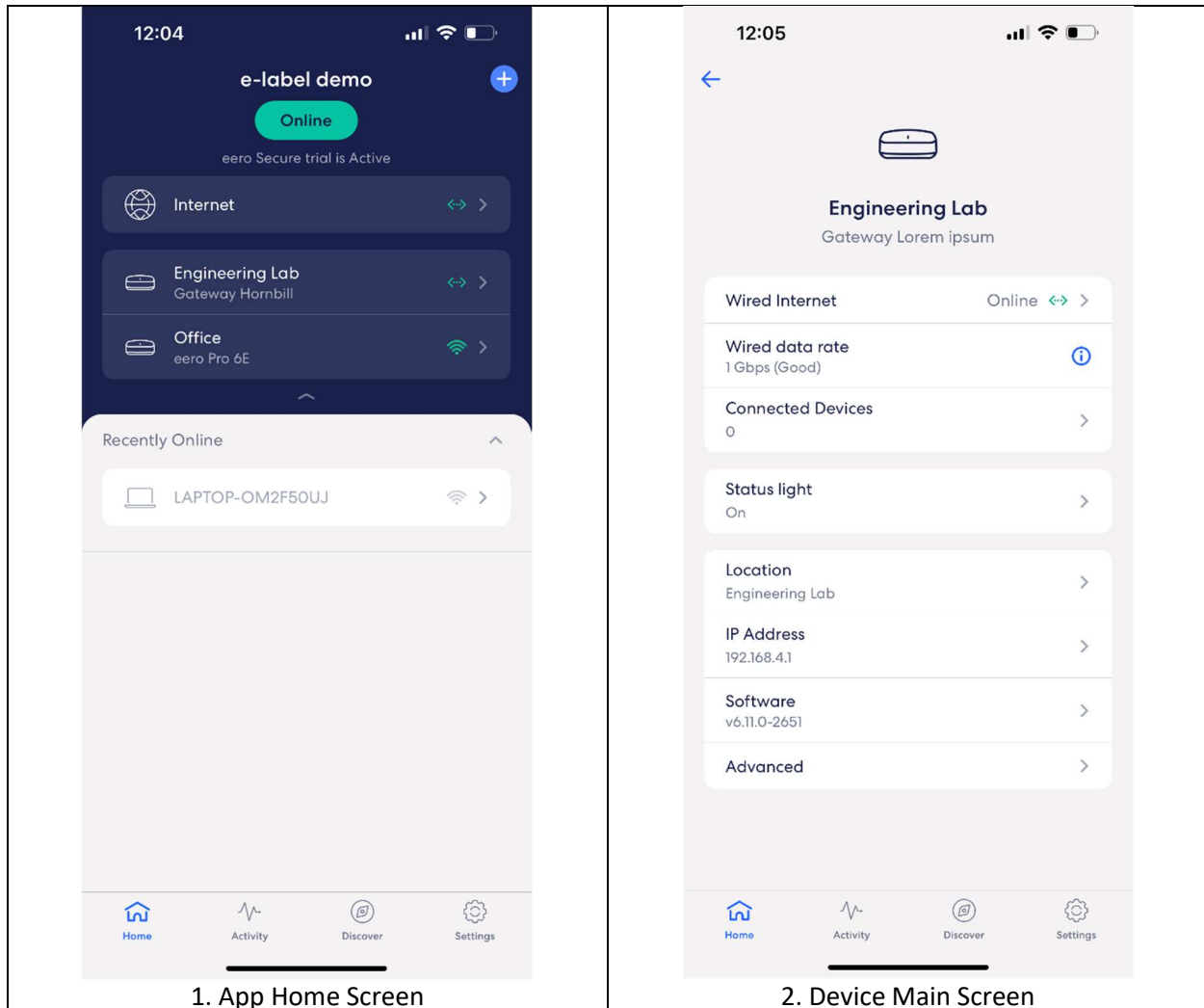
The final section gives the content of the text page showing both FCC and Industry Canada (in English and Canadian French).

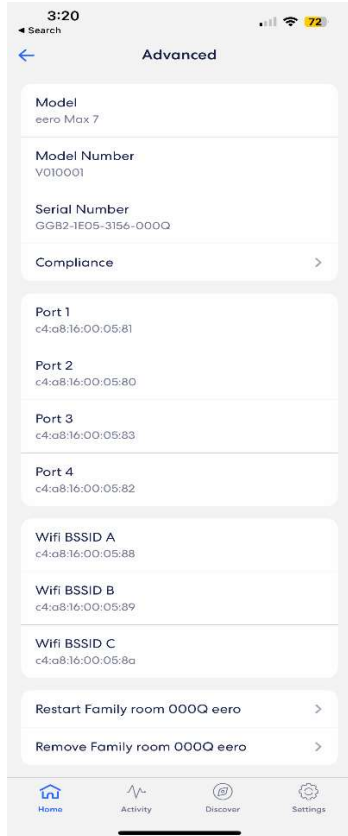
## User Flow Diagram



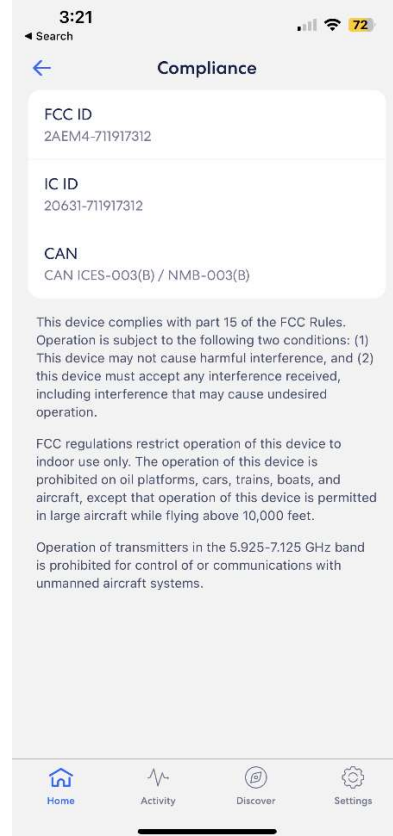
## Screenshots

Screenshots corresponding to the above flow diagram are given below. Images are representative and may not reflect actual user's network configuration.





3. Device Advance Screen



4. Device Compliance Page

## Regulatory Page Content Text detail

### FCC:

This device complies with part 15 of the FCC Rules. Operation is subject to the following two conditions: (1) This device may not cause harmful interference, and (2) this device must accept any interference received, including interference that may cause undesired operation.

FCC regulations restrict operation of this device to indoor use only. The operation of this device is prohibited on oil platforms, cars, trains, boats, and aircraft, except that operation of this device is permitted in large aircraft while flying above 10,000 feet.

The party responsible for FCC compliance is eero LLC  
660 3rd St., 4th Floor, San Francisco, CA 94107 USA

### Industry Canada; English (From RSS-GEN, Issue 5 April 2018)

This device contains licence-exempt transmitter(s)/receiver(s) that comply with Innovation, Science and Economic Development Canada's licence-exempt RSS(s). Operation is subject to the following two conditions:

1. This device may not cause interference.
2. This device must accept any interference, including interference that may cause undesired operation of the device.

### Industry Canada; French (de CNR-Gen (Français) 5e édition Avril 2018)

L'émetteur/récepteur exempt de licence contenu dans le présent appareil est conforme aux CNR d'Innovation, Sciences et Développement économique Canada applicables aux appareils radio exempts de licence. L'exploitation est autorisée aux deux conditions suivantes :

1. L'appareil ne doit pas produire de brouillage;
2. L'appareil doit accepter tout brouillage radioélectrique subi, même si le brouillage est susceptible d'en compromettre le fonctionnement.