



## **FCC REPORT**

**Applicant:** Bellabeat, Inc.

**Address of Applicant:** 2 Mini Plaza, San Francisco, CA 94103, US

**Equipment Under Test (EUT)**

Product Name: Tracker with wooden case LEAF Urban Silver

Model No.: LEAF, LFC

**FCC ID:** 2AELF-LF02

**Applicable standards:** FCC CFR Title 47 Part 15 Subpart C Section 15.249:2015

**Date of sample receipt:** August 03, 2016

**Date of Test:** August 04-09, 2016

**Date of report issued:** August 10, 2016

**Test Result :** PASS \*

\* In the configuration tested, the EUT complied with the standards specified above.

Authorized Signature:

**Robinson Lo**

**Laboratory Manager**

This report details the results of the testing carried out on one sample. The results contained in this test report do not relate to other samples of the same product and does not permit the use of the GTS product certification mark. The manufacturer should ensure that all products in series production are in conformity with the product sample detailed in this report.

This report may only be reproduced and distributed in full. If the product in this report is used in any configuration other than that detailed in the report, the manufacturer must ensure the new system complies with all relevant standards. Any mention of GTS or testing done by GTS in connection with, distribution or use of the product described in this report must be approved by GTS in writing.

This document cannot be reproduced except in full, without prior written approval of the Company. Any unauthorized alteration, forgery or falsification of the content or appearance of this document is unlawful and offenders may be prosecuted to the fullest extent of the law. Unless otherwise stated the results shown in this test report refer only to the sample(s) tested and such sample(s) are retained for 90 days only.

## 2 Version

Version No.	Date	Description
00	August 10, 2016	Original

**Prepared By:** Yang. Liu **Date:** August 10, 2016  
**Project Engineer**

**Check By:** Andy. Wu **Date:** August 10, 2016  
**Reviewer**

## 3 Contents

	Page
1 COVER PAGE.....	1
2 VERSION.....	2
3 CONTENTS.....	3
4 TEST SUMMARY.....	4
4.1 MEASUREMENT UNCERTAINTY.....	4
5 GENERAL INFORMATION.....	5
5.1 CLIENT INFORMATION.....	5
5.2 GENERAL DESCRIPTION OF EUT.....	5
5.3 TEST MODE.....	7
5.4 DESCRIPTION OF SUPPORT UNITS.....	7
5.5 TEST FACILITY.....	7
5.6 TEST LOCATION.....	7
5.7 OTHER INFORMATION REQUESTED BY THE CUSTOMER.....	7
6 TEST INSTRUMENTS LIST.....	8
7 TEST RESULTS AND MEASUREMENT DATA.....	9
7.1 ANTENNA REQUIREMENT.....	9
7.2 RADIATED EMISSION METHOD.....	10
7.2.1 <i>Field Strength of The Fundamental Signal</i> .....	12
7.2.2 <i>Spurious emissions</i> .....	13
7.2.3 <i>Bandedge emissions</i> .....	17
7.3 20dB OCCUPY BANDWIDTH.....	18
8 TEST SETUP PHOTO.....	20
9 EUT CONSTRUCTIONAL DETAILS.....	21

## 4 Test Summary

Test Item	Section in CFR 47	Result
Antenna requirement	15.203	Pass
AC Power Line Conducted Emission	15.207	N/A
Field strength of the fundamental signal	15.249 (a)	Pass
Spurious emissions	15.249 (a) (d)/15.209	Pass
Band edge	15.249 (d)/15.205	Pass
20dB Occupied Bandwidth	15.215 (c)	Pass

*Pass: The EUT complies with the essential requirements in the standard.*

*N/A: Not applicable*

*Remark: Test according to ANSI C63.10 2013 and ANSI C63.4: 2014*

### 4.1 Measurement Uncertainty

Test Item	Frequency Range	Measurement Uncertainty	Notes
Radiated Emission	9kHz ~ 30MHz	± 4.34dB	(1)
Radiated Emission	30MHz ~ 1000MHz	± 4.24dB	(1)
Radiated Emission	1GHz ~ 26.5GHz	± 4.68dB	(1)
AC Power Line Conducted Emission	0.15MHz ~ 30MHz	± 3.45dB	(1)

Note (1): The measurement uncertainty is for coverage factor of k=2 and a level of confidence of 95%.

## 5 General Information

### 5.1 Client Information

Applicant:	Bellabeat, Inc.
Address of Applicant:	2 Mini Plaza, San Francisco, CA 94103, US
Manufacturer:	Join Idea Ltd
Address of Manufacturer:	Unit B, 10/F, Valiant Industrial Center, 2-12 Au Pui Wan Street, Fo Tan, NT, HK
Factory:	Dongguan Join Power Electronic Technology Limited
Address of Factory:	No.55, Xinmin Road, Chang an Town, Dongguan city, China

### 5.2 General Description of EUT

Product Name:	Tracker with wooden case LEAF Urban Silver
Model No.:	LEAF, LFC
Operation Frequency:	2402MHz~2480MHz
Channel numbers:	40
Channel separation:	2MHz
Modulation type:	GFSK
Antenna Type:	PCB Antenna
Antenna gain:	0dBi (declare by Applicant)
Power supply:	DC 3V 1*CR2032

Operation Frequency each of channel							
Channel	Frequency	Channel	Frequency	Channel	Frequency	Channel	Frequency
1	2402MHz	11	2422MHz	21	2442MHz	31	2462MHz
2	2404MHz	12	2424MHz	22	2444MHz	32	2464MHz
⋮	⋮	⋮	⋮	⋮	⋮	⋮	⋮
9	2418MHz	19	2438MHz	29	2458MHz	39	2478MHz
10	2420MHz	20	2440MHz	30	2460MHz	40	2480MHz

Note:

In section 15.31(m), regards to the operating frequency range over 10 MHz, the Lowest frequency, the middle frequency, and the highest frequency of channel were selected to perform the test, and the selected channel see below:

Channel	Frequency
The lowest channel	2402MHz
The middle channel	2440MHz
The Highest channel	2480MHz

### 5.3 Test mode

Transmitting mode	Keep the EUT in continuously transmitting mode
-------------------	--

Note : New battery is used during all test

Per-test mode.			
We have verified the construction and function in typical operation, The EUT was placed on three different polar directions; i.e. X axis, Y axis, Z axis. which was shown in this test report and defined as follows:			
Axis	X	Y	Z
Field Strength(dBuV/m)	87.67	89.99	87.54

### 5.4 Description of Support Units

None.
-------

### 5.5 Test Facility

<p>The test facility is recognized, certified, or accredited by the following organizations:</p> <ul style="list-style-type: none"> <li>● <b>FCC —Registration No.: 600491</b> Global United Technology Services Co., Ltd., Shenzhen EMC Laboratory has been registered and fully described in a report filed with the (FCC) Federal Communications Commission. The acceptance letter from the FCC is maintained in files. Registration 600491, June 22, 2016.</li> <li>● <b>Industry Canada (IC) —Registration No.: 9079A-2</b> The 3m Semi-anechoic chamber of Global United Technology Services Co., Ltd. has been registered by Certification and Engineering Bureau of Industry Canada for radio equipment testing with Registration No.: 9079A-2, June 26, 2013.</li> </ul>
---

### 5.6 Test Location

All tests were performed at:
<p>Global United Technology Services Co., Ltd. Address: No. 301-309, 3/F., Jinyuan Business Building, No.2, Laodong Industrial Zone, Xixiang Road, Baoan District, Shenzhen, Guangdong, China 518102 Tel: 0755-27798480 Fax: 0755-27798960</p>

### 5.7 Other Information Requested by the Customer

None.
-------

## 6 Test Instruments list

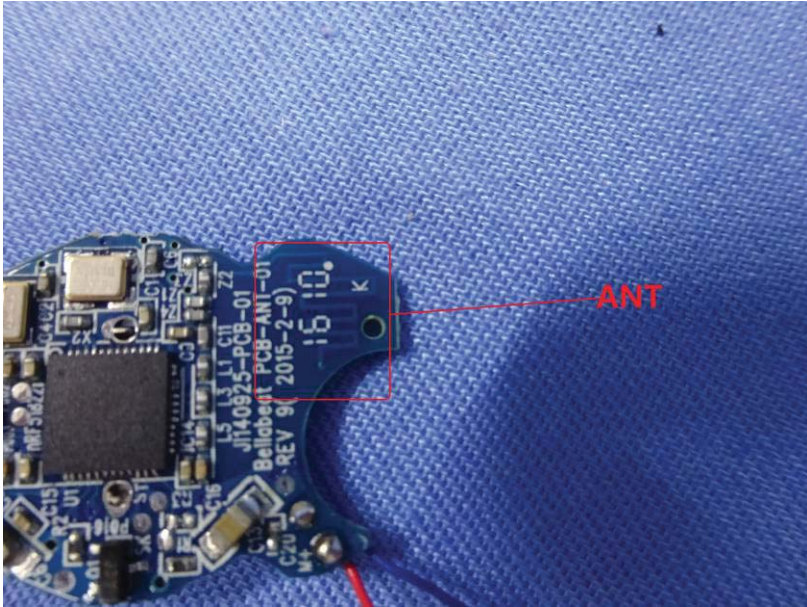
Radiated Emission:						
Item	Test Equipment	Manufacturer	Model No.	Inventory No.	Cal.Date (mm-dd-yy)	Cal.Due date (mm-dd-yy)
1	3m Semi- Anechoic Chamber	ZhongYu Electron	9.0(L)*6.0(W)* 6.0(H)	GTS250	July. 03 2015	July. 02 2020
2	Control Room	ZhongYu Electron	6.2(L)*2.5(W)* 2.4(H)	GTS251	N/A	N/A
3	Spectrum Analyzer	Agilent	E4440A	GTS533	Jun. 29 2016	Jun. 28 2017
4	EMI Test Receiver	Rohde & Schwarz	ESU26	GTS203	Jun. 29 2016	Jun. 28 2017
5	BiConiLog Antenna	SCHWARZBECK MESS-ELEKTRONIK	VULB9163	GTS214	Jun. 29 2016	Jun. 28 2017
6	Double -ridged waveguide horn	SCHWARZBECK MESS-ELEKTRONIK	9120D-829	GTS208	Jun. 25 2016	Jun. 24 2017
7	Horn Antenna	ETS-LINDGREN	3160	GTS217	Mar. 26 2016	Mar. 25 2017
8	EMI Test Software	AUDIX	E3	N/A	N/A	N/A
9	Coaxial Cable	GTS	N/A	GTS213	Mar. 26 2016	Mar. 25 2017
10	Coaxial Cable	GTS	N/A	GTS211	Mar. 26 2016	Mar. 25 2017
11	Coaxial cable	GTS	N/A	GTS210	Mar. 26 2016	Mar. 25 2017
12	Coaxial Cable	GTS	N/A	GTS212	Mar. 26 2016	Mar. 25 2017
13	Amplifier(100kHz-3GHz)	HP	8347A	GTS204	Jun. 29 2016	Jun. 28 2017
14	Amplifier(2GHz-20GHz)	HP	8349B	GTS206	Jun. 29 2016	Jun. 28 2017
15	Amplifier (18-26GHz)	Rohde & Schwarz	AFS33-18002 650-30-8P-44	GTS218	Jun. 25 2016	Jun. 24 2017
16	Band filter	Amindeon	82346	GTS219	Mar. 26 2016	Mar. 25 2017

General used equipment:						
Item	Test Equipment	Manufacturer	Model No.	Inventory No.	Cal.Date (mm-dd-yy)	Cal.Due date (mm-dd-yy)
1	Barometer	ChangChun	DYM3	GTS257	July 06 2016	July 05 2017



## 7 Test results and Measurement Data

### 7.1 Antenna requirement

<b>Standard requirement:</b>	FCC Part15 C Section 15.203
<p><b>15.203 requirement:</b></p> <p>An intentional radiator shall be designed to ensure that no antenna other than that furnished by the responsible party shall be used with the device. The use of a permanently attached antenna or of an antenna that uses a unique coupling to the intentional radiator, the manufacturer may design the unit so that a broken antenna can be replaced by the user, but the use of a standard antenna jack or electrical connector is prohibited.</p>	
<p><b>EUT Antenna:</b></p>	
<p><i>The antenna is PCB antenna, the best case gain of the antenna is 0dBi</i></p> 	

## 7.2 Radiated Emission Method

Test Requirement:	FCC Part15 C Section 15.209				
Test Method:	ANSI C63.10:2013				
Test Frequency Range:	30MHz to 25GHz				
Test site:	Measurement Distance: 3m				
Receiver setup:	Frequency	Detector	RBW	VBW	Remark
	30MHz-1GHz	Quasi-peak	120KHz	300KHz	Quasi-peak Value
	Above 1GHz	Peak	1MHz	3MHz	Peak Value
		Peak	1MHz	10Hz	Average Value
Limit: (Field strength of the fundamental signal)	Frequency	Limit (dBuV/m @3m)		Remark	
	2400MHz-2483.5MHz	94.00		Average Value	
Limit: (Spurious Emissions)	Frequency	Limit (dBuV/m @3m)		Remark	
	30MHz-88MHz	40.00		Quasi-peak Value	
	88MHz-216MHz	43.50		Quasi-peak Value	
	216MHz-960MHz	46.00		Quasi-peak Value	
	960MHz-1GHz	54.00		Quasi-peak Value	
	Above 1GHz	54.00		Average Value	
74.00		Peak Value			
Limit: (band edge)	Emissions radiated outside of the specified frequency bands, except for harmonics, shall be attenuated by at least 50 dB below the level of the fundamental or to the general radiated emission limits in Section 15.209, whichever is the lesser attenuation.				
Test setup:	<p>Below 1GHz</p> <p>Above 1GHz</p>				

	<p>The diagram illustrates the test setup. An EUT (Equipment Under Test) is placed on a Turn Table. The Turn Table is positioned 3 meters away from an Antenna Tower. The Antenna Tower has a Horn Antenna mounted on it. The Horn Antenna is positioned 4 meters above the ground. The EUT is positioned 1.5 meters above the ground. The Antenna Tower is positioned 1 meter above the ground. The Antenna Tower is connected to an Amplifier, which is connected to a Spectrum Analyzer.</p>
<p>Test Procedure:</p>	<ol style="list-style-type: none"> <li>1. The EUT was placed on the top of a rotating table (0.8m for below 1GHz and 1.5 meters for above 1GHz) above the ground at a 3 meter camber. The table was rotated 360 degrees to determine the position of the highest radiation.</li> <li>2. The EUT was set 3 meters away from the interference-receiving antenna, which was mounted on the top of a variable-height antenna tower.</li> <li>3. The antenna height is varied from one meter to four meters above the ground to determine the maximum value of the field strength. Both horizontal and vertical polarizations of the antenna are set to make the measurement.</li> <li>4. For each suspected emission, the EUT was arranged to its worst case and then the antenna was tuned to heights from 1 meter to 4 meters and the rota table was turned from 0 degrees to 360 degrees to find the maximum reading.</li> <li>5. The test-receiver system was set to Peak Detect Function and Specified Bandwidth with Maximum Hold Mode.</li> <li>6. If the emission level of the EUT in peak mode was 10dB lower than the limit specified, then testing could be stopped and the peak values of the EUT would be reported. Otherwise the emissions that did not have 10dB margin would be re-tested one by one using peak, quasi-peak or average method as specified and then reported in a data sheet.</li> </ol>
<p>Test Instruments:</p>	<p>Refer to section 6.0 for details</p>
<p>Test mode:</p>	<p>Refer to section 5.3 for details</p>
<p>Test results:</p>	<p>Pass</p>

**Measurement data:**

## 7.2.1 Field Strength of The Fundamental Signal

### Peak value:

Frequency (MHz)	Read Level (dBuV)	Antenna Factor (dB/m)	Cable Loss (dB)	Preamp Factor (dB)	Level (dBuV/m)	Limit Line (dBuV/m)	Over Limit (dB)	polarization
2402.00	90.80	27.58	5.39	34.01	89.76	114.00	-24.24	Vertical
2402.00	85.57	27.58	5.39	34.01	84.53	114.00	-29.47	Horizontal
2440.00	91.04	27.48	5.43	33.96	89.99	114.00	-24.01	Vertical
2440.00	85.10	27.48	5.43	33.96	84.05	114.00	-29.95	Horizontal
2480.00	90.01	27.52	5.47	33.92	89.08	114.00	-24.92	Vertical
2480.00	84.22	27.52	5.47	33.92	83.29	114.00	-30.71	Horizontal

### Average value:

Frequency (MHz)	Read Level (dBuV)	Antenna Factor (dB/m)	Cable Loss (dB)	Preamp Factor (dB)	Level (dBuV/m)	Limit Line (dBuV/m)	Over Limit (dB)	polarization
2402.00	81.01	27.58	5.39	34.01	79.97	94.00	-14.03	Vertical
2402.00	75.94	27.58	5.39	34.01	74.90	94.00	-19.10	Horizontal
2440.00	81.12	27.48	5.43	33.96	80.07	94.00	-13.94	Vertical
2440.00	74.52	27.48	5.43	33.96	73.47	94.00	-20.53	Horizontal
2480.00	80.16	27.52	5.47	33.92	79.23	94.00	-14.77	Vertical
2480.00	74.72	27.52	5.47	33.92	73.79	94.00	-20.21	Horizontal

Note: RBW 3MHz VBW 10MHz peak detector is for pk value , RMS detector is for AV value

## 7.2.2 Spurious emissions

■ Below 1GHz

Frequency (MHz)	Read Level (dBuV)	Antenna Factor (dB/m)	Cable Loss (dB)	Preamplifier Factor (dB)	Level (dBuV/m)	Limit Line (dBuV/m)	Over Limit (dB)	polarization
48.16	24.36	15.36	0.75	30.01	10.46	40.00	-29.54	Vertical
93.11	26.76	14.50	1.14	29.73	12.67	43.50	-30.83	Vertical
140.84	28.31	10.20	1.51	29.45	10.57	43.50	-32.93	Vertical
197.89	25.77	12.57	1.83	29.21	10.96	43.50	-32.54	Vertical
317.70	27.57	15.31	2.45	29.90	15.43	46.00	-30.57	Vertical
645.12	25.72	20.61	3.89	29.25	20.97	46.00	-25.03	Vertical
39.02	25.93	15.34	0.65	30.05	11.87	40.00	-28.13	Horizontal
100.23	25.58	15.11	1.19	29.70	12.18	43.50	-31.32	Horizontal
190.41	24.59	12.56	1.79	29.23	9.71	43.50	-33.79	Horizontal
291.04	24.03	14.89	2.32	29.94	11.30	46.00	-34.70	Horizontal
543.27	22.35	19.46	3.50	29.30	16.01	46.00	-29.99	Horizontal
787.85	23.92	21.92	4.41	29.20	21.05	46.00	-24.95	Horizontal

■ Above 1GHz

Test channel:	Lowest channel
---------------	----------------

**Peak value:**

Frequency (MHz)	Read Level (dBuV)	Antenna Factor (dB/m)	Cable Loss (dB)	Preamp Factor (dB)	Level (dBuV/m)	Limit Line (dBuV/m)	Over Limit (dB)	polarization
4804.00	36.03	31.78	8.60	32.09	44.32	74.00	-29.68	Vertical
7206.00	30.98	36.15	11.65	32.00	46.78	74.00	-27.22	Vertical
9608.00	30.71	37.95	14.14	31.62	51.18	74.00	-22.82	Vertical
12010.00	*					74.00		Vertical
14412.00	*					74.00		Vertical
4804.00	40.05	31.78	8.60	32.09	48.34	74.00	-25.66	Horizontal
7206.00	32.62	36.15	11.65	32.00	48.42	74.00	-25.58	Horizontal
9608.00	30.01	37.95	14.14	31.62	50.48	74.00	-23.52	Horizontal
12010.00	*					74.00		Horizontal
14412.00	*					74.00		Horizontal

**Average value:**

Frequency (MHz)	Read Level (dBuV)	Antenna Factor (dB/m)	Cable Loss (dB)	Preamp Factor (dB)	Level (dBuV/m)	Limit Line (dBuV/m)	Over Limit (dB)	polarization
4804.00	25.08	31.78	8.60	32.09	33.37	54.00	-20.63	Vertical
7206.00	19.81	36.15	11.65	32.00	35.61	54.00	-18.39	Vertical
9608.00	18.97	37.95	14.14	31.62	39.44	54.00	-14.56	Vertical
12010.00	*					54.00		Vertical
14412.00	*					54.00		Vertical
4804.00	29.17	31.78	8.60	32.09	37.46	54.00	-16.54	Horizontal
7206.00	21.90	36.15	11.65	32.00	37.70	54.00	-16.30	Horizontal
9608.00	18.59	37.95	14.14	31.62	39.06	54.00	-14.94	Horizontal
12010.00	*					54.00		Horizontal
14412.00	*					54.00		Horizontal

**Remark:**

1. Final Level = Receiver Read level + Antenna Factor + Cable Loss – Preamplifier Factor
2. “\*”, means this data is the too weak instrument of signal is unable to test.

Test channel:	Middle
---------------	--------

**Peak value:**

Frequency (MHz)	Read Level (dBuV)	Antenna Factor (dB/m)	Cable Loss (dB)	Preamp Factor (dB)	Level (dBuV/m)	Limit Line (dBuV/m)	Over Limit (dB)	polarization
4880.00	36.63	31.85	8.67	32.12	45.03	74.00	-28.97	Vertical
7320.00	31.38	36.37	11.72	31.89	47.58	74.00	-26.42	Vertical
9760.00	31.07	38.35	14.25	31.62	52.05	74.00	-21.95	Vertical
12200.00	*					74.00		Vertical
14640.00	*					74.00		Vertical
4880.00	40.78	31.85	8.67	32.12	49.18	74.00	-24.82	Horizontal
7320.00	33.08	36.37	11.72	31.89	49.28	74.00	-24.72	Horizontal
9760.00	30.43	38.35	14.25	31.62	51.41	74.00	-22.59	Horizontal
12200.00	*					74.00		Horizontal
14640.00	*					74.00		Horizontal

**Average value:**

Frequency (MHz)	Read Level (dBuV)	Antenna Factor (dB/m)	Cable Loss (dB)	Preamp Factor (dB)	Level (dBuV/m)	Limit Line (dBuV/m)	Over Limit (dB)	polarization
4880.00	25.58	31.85	8.67	32.12	33.98	54.00	-20.02	Vertical
7320.00	20.15	36.37	11.72	31.89	36.35	54.00	-17.65	Vertical
9760.00	19.27	38.35	14.25	31.62	40.25	54.00	-13.75	Vertical
12200.00	*					54.00		Vertical
14640.00	*					54.00		Vertical
4880.00	29.74	31.85	8.67	32.12	38.14	54.00	-15.86	Horizontal
7320.00	22.28	36.37	11.72	31.89	38.48	54.00	-15.52	Horizontal
9760.00	18.95	38.35	14.25	31.62	39.93	54.00	-14.07	Horizontal
12200.00	*					54.00		Horizontal
14640.00	*					54.00		Horizontal

**Remark:**

1. Final Level = Receiver Read level + Antenna Factor + Cable Loss – Pre-amplifier Factor
2. “\*”, means this data is the too weak instrument of signal is unable to test.

Test channel:	Highest
---------------	---------

**Peak value:**

Frequency (MHz)	Read Level (dBuV)	Antenna Factor (dB/m)	Cable Loss (dB)	Preamp Factor (dB)	Level (dBuV/m)	Limit Line (dBuV/m)	Over Limit (dB)	polarization
4960.00	36.63	31.93	8.73	32.16	45.13	74.00	-28.87	Vertical
7440.00	31.39	36.59	11.79	31.78	47.99	74.00	-26.01	Vertical
9920.00	31.07	38.81	14.38	31.88	52.38	74.00	-21.62	Vertical
12400.00	*					74.00		Vertical
14880.00	*					74.00		Vertical
4960.00	40.78	31.93	8.73	32.16	49.28	74.00	-24.72	Horizontal
7440.00	33.08	36.59	11.79	31.78	49.68	74.00	-24.32	Horizontal
9920.00	30.43	38.81	14.38	31.88	51.74	74.00	-22.26	Horizontal
12400.00	*					74.00		Horizontal
14880.00	*					74.00		Horizontal

**Average value:**

Frequency (MHz)	Read Level (dBuV)	Antenna Factor (dB/m)	Cable Loss (dB)	Preamp Factor (dB)	Level (dBuV/m)	Limit Line (dBuV/m)	Over Limit (dB)	polarization
4960.00	25.64	31.93	8.73	32.16	34.14	54.00	-19.86	Vertical
7440.00	20.19	36.59	11.79	31.78	36.79	54.00	-17.21	Vertical
9920.00	19.31	38.81	14.38	31.88	40.62	54.00	-13.38	Vertical
12400.00	*					54.00		Vertical
14880.00	*					54.00		Vertical
4960.00	29.80	31.93	8.73	32.16	38.30	54.00	-15.70	Horizontal
7440.00	22.33	36.59	11.79	31.78	38.93	54.00	-15.07	Horizontal
9920.00	18.99	38.81	14.38	31.88	40.30	54.00	-13.70	Horizontal
12400.00	*					54.00		Horizontal
14880.00	*					54.00		Horizontal

**Remark:**

1. Final Level = Receiver Read level + Antenna Factor + Cable Loss – Pre-amplifier Factor
2. “\*”, means this data is too weak instrument of signal is unable to test.
3. The emission levels of other frequencies are very lower than the limit and not show in test report.



### 7.2.3 Bandedge emissions

All of the restriction bands were tested, and only the data of worst case was exhibited.

Test channel:	Lowest channel
---------------	----------------

**Peak value:**

Frequency (MHz)	Read Level (dBuV)	Antenna Factor (dB/m)	Cable Loss (dB)	Preamp Factor (dB)	Level (dBuV/m)	Limit Line (dBuV/m)	Over Limit (dB)	Polarization
2390.00	41.97	27.59	5.38	30.18	44.76	74.00	-29.24	Horizontal
2400.00	58.62	27.58	5.39	30.18	61.41	74.00	-12.59	Horizontal
2390.00	42.43	27.59	5.38	30.18	45.22	74.00	-28.78	Vertical
2400.00	60.56	27.58	5.39	30.18	63.35	74.00	-10.65	Vertical

**Average value:**

Frequency (MHz)	Read Level (dBuV)	Antenna Factor (dB/m)	Cable Loss (dB)	Preamp Factor (dB)	Level (dBuV/m)	Limit Line (dBuV/m)	Over Limit (dB)	Polarization
2390.00	32.72	27.59	5.38	30.18	35.51	54.00	-18.49	Horizontal
2400.00	43.91	27.58	5.39	30.18	46.70	54.00	-7.31	Horizontal
2390.00	32.60	27.59	5.38	30.18	35.39	54.00	-18.61	Vertical
2400.00	45.47	27.58	5.39	30.18	48.26	54.00	-5.74	Vertical

Test channel:	Highest channel
---------------	-----------------

**Peak value:**

Frequency (MHz)	Read Level (dBuV)	Antenna Factor (dB/m)	Cable Loss (dB)	Preamp Factor (dB)	Level (dBuV/m)	Limit Line (dBuV/m)	Over Limit (dB)	Polarization
2483.50	43.96	27.53	5.47	29.93	47.03	74.00	-26.97	Horizontal
2500.00	43.31	27.55	5.49	29.93	46.42	74.00	-27.58	Horizontal
2483.50	44.65	27.53	5.47	29.93	47.72	74.00	-26.28	Vertical
2500.00	44.22	27.55	5.49	29.93	47.33	74.00	-26.67	Vertical

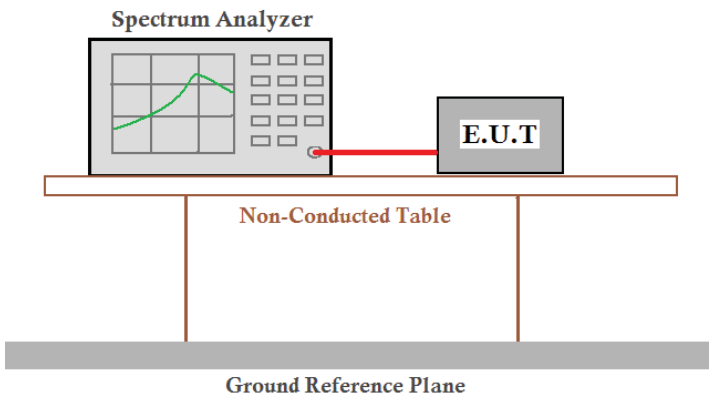
**Average value:**

Frequency (MHz)	Read Level (dBuV)	Antenna Factor (dB/m)	Cable Loss (dB)	Preamp Factor (dB)	Level (dBuV/m)	Limit Line (dBuV/m)	Over Limit (dB)	Polarization
2483.50	35.54	27.53	5.47	29.93	38.61	54.00	-15.39	Horizontal
2500.00	33.67	27.55	5.49	29.93	36.78	54.00	-17.22	Horizontal
2483.50	36.67	27.53	5.47	29.93	39.74	54.00	-14.26	Vertical
2500.00	33.52	27.55	5.49	29.93	36.63	54.00	-17.37	Vertical

Remark:

1. Final Level = Receiver Read level + Antenna Factor + Cable Loss – Preamplifier Factor

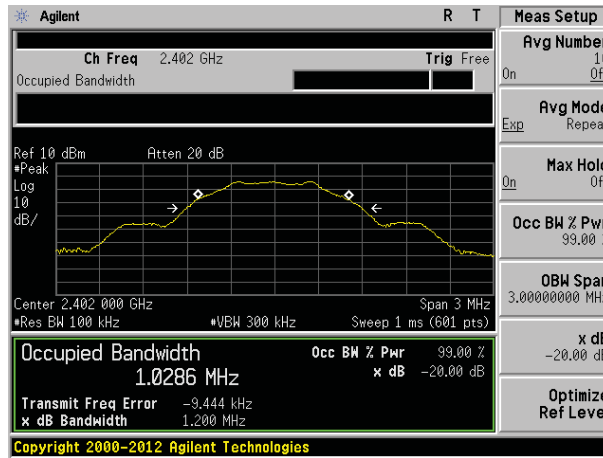
### 7.3 20dB Occupy Bandwidth

Test Requirement:	FCC Part15 C Section 15.249/15.215
Test Method:	ANSI C63.10:2013
Limit:	Operation Frequency range 2400MHz~2483.5MHz
Test setup:	 <p>The diagram illustrates the test setup. A Spectrum Analyzer is connected to an E.U.T. (Equipment Under Test) via a red cable. Both are placed on a Non-Conducted Table, which is supported by a Ground Reference Plane.</p>
Test Instruments:	Refer to section 6.0 for details
Test mode:	Refer to section 5.3 for details
Test results:	Pass

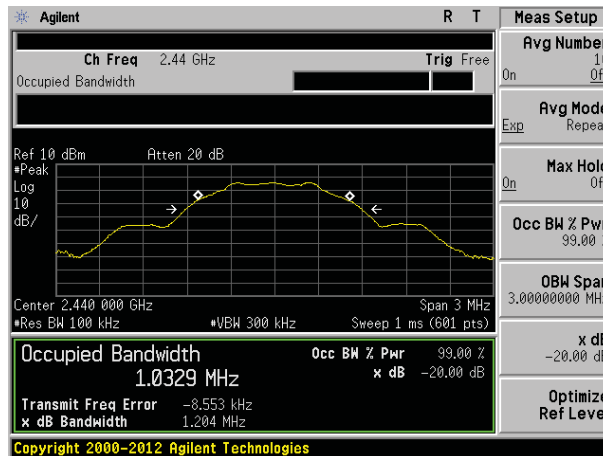
#### Measurement Data

Test channel	20dB bandwidth(MHz)	Result
Lowest	1.200	Pass
Middle	1.204	Pass
Highest	1.204	Pass

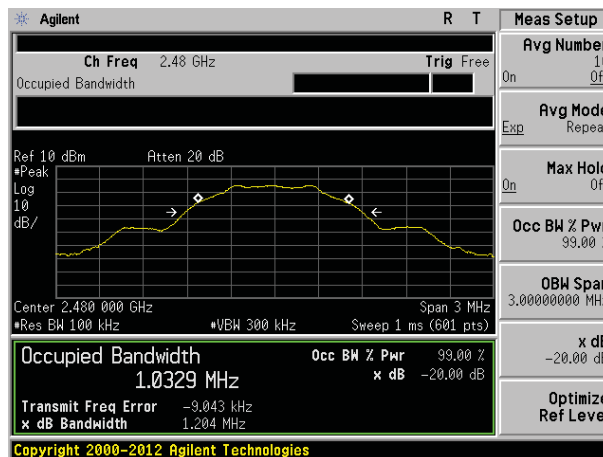
Test plot as follows:



Lowest channel



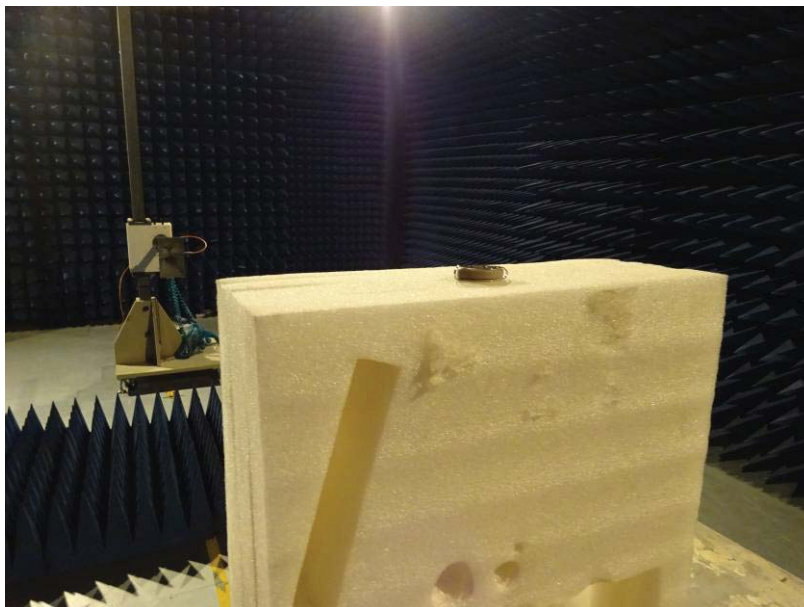
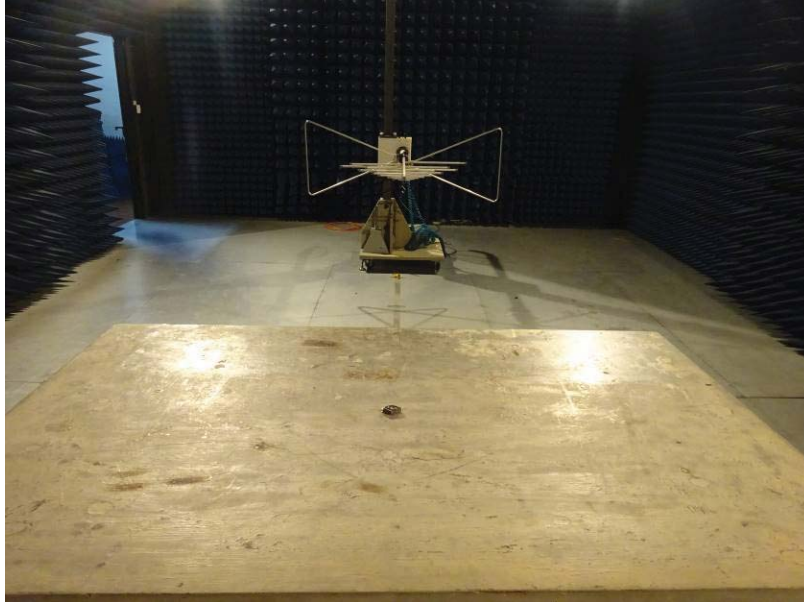
Middle channel



Highest channel

## 8 Test Setup Photo

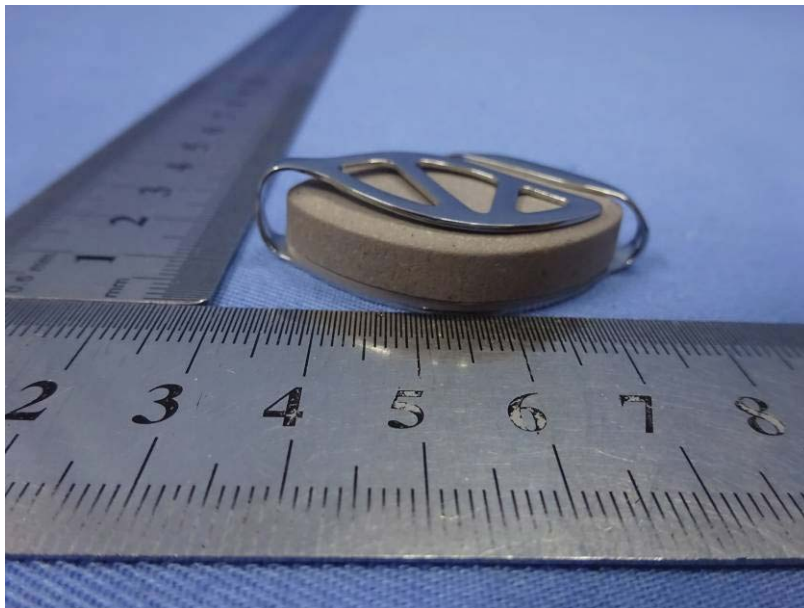
Radiated Emission

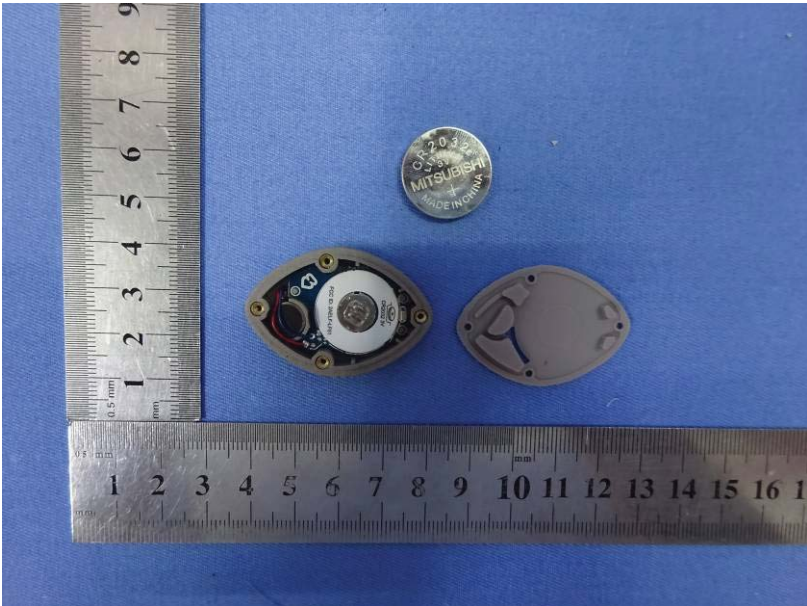


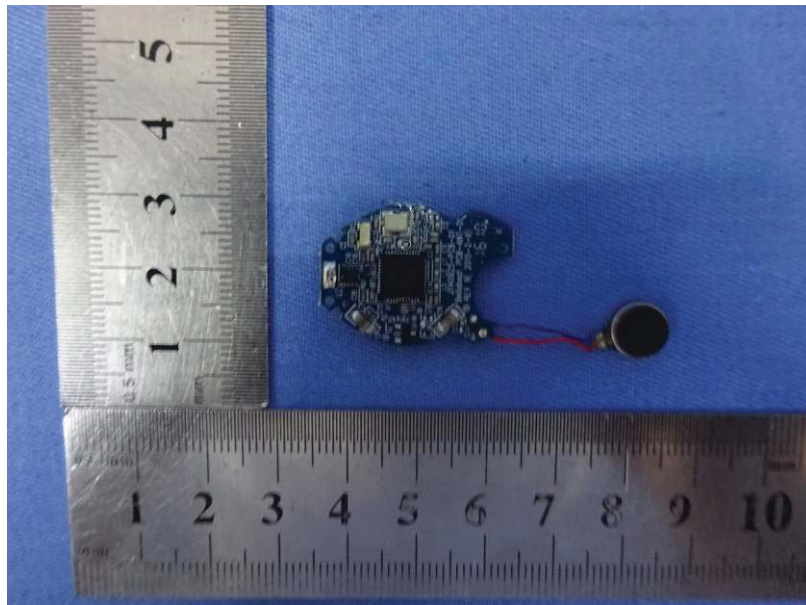
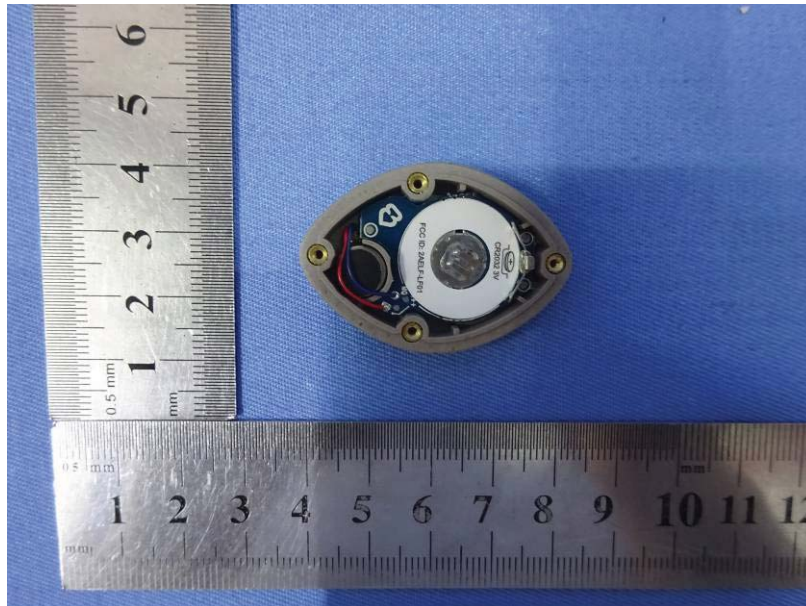
## 9 EUT Constructional Details

















-----End-----