

LEAF
USER MANUAL

This section contains important information about the operation of your device. It also contains information about how to use the device safely. Read this information carefully before using your device.

ABOUT BELLABEAT LEAF

The Bellabeat LEAF is a sleep, stress and movement monitor. It can be worn as a necklace, bracelet or a clip. The Bellabeat LEAF syncs with the Bellabeat app, and all the data is transferred wirelessly. Accurate sensors inside the Leaf measure your breathing, how active you are and all your movements throughout the day and night. Based on all the collected data the Leaf App provides useful insights to improve your health. The LEAF also vibrates to remind you to either increase your activity or reduce the intensity of your workouts, depending on your preferences.

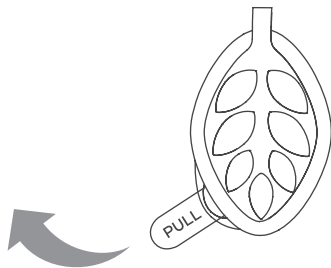
WHAT'S INCLUDED

Bellabeat Leaf
Necklace
Bracelet
User manual

FIRST STEPS

POWERING ON

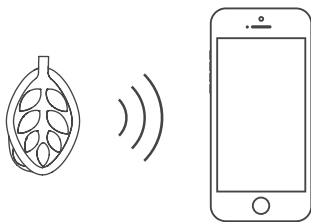
Your Bellabeat LEAF is shipped with one CR2032 coin cell battery that has been previously installed. Remove the plastic tab from the battery to power on your LEAF.



FIRST STEPS

INSTALL THE APPLICATION

1. Connect your phone to the Internet and follow the instructions from www.bellabeat.com to install the application.
2. Open the Bellabeat application.
3. Double tap your Bellabeat LEAF to start pairing.
4. Connect the Bellabeat LEAF with your mobile phone.

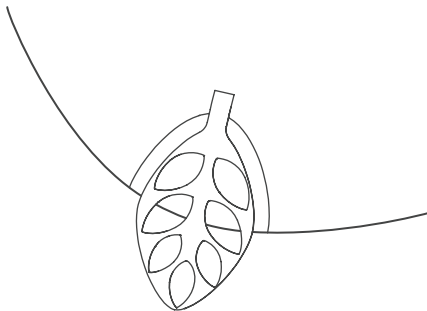


FIRST STEPS

HOW TO WEAR THE LEAF

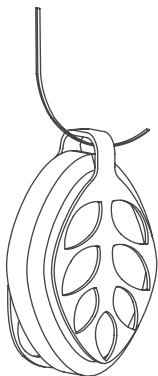
You can wear your Bellabeat Leaf as a clip, necklace or bracelet.

CLIP – Lift the metal clip and slide the fabric of your garment between the metal clip and wooden housing. It can be attached to the hem of your top or shirt, or the waistband. Please be informed - clipping the LEAF to fabrics thicker than 2 mm could damage the clip. Avoid pulling the LEAF more than 4mm away from the wooden housing when guiding your fabric through. The LEAF device should be treated with the same care as a piece of jewelry to protect its construction.



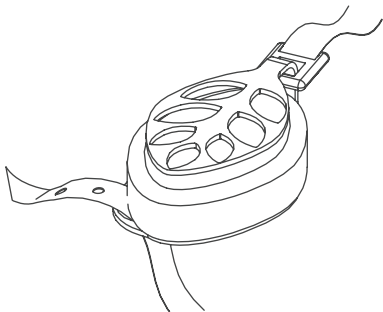
FIRST STEPS

NECKLACE – Make sure you pull the necklace through the metal clip hoop so that the tip of the LEAF is facing down. The little hole on the side is used only when worn as a bracelet.



FIRST STEPS

BRACELET – Attach the metal clip to the large hoop at the top of the Leaf. Lay the Leaf on the top of your wrist (with the Leaf design facing out) and wrap the leather strap around your wrist twice. Guide the other end of the leather bracelet strap through the opposite metal loop from the underside so that the tip of the strap is pointing up. Pull the strap so that the bracelet feels firmly in place, and attach the appropriate hole over the metal peg. Guide the leather ring over the strap to hold in place. Style tip: You can loop the extra strap back through the leather ring.



SPECIFICATIONS

- Dimensions:

Height: 1,89 inches (48 mm)

Width: 1,18 inches (30 mm)

Depth: 0,51 inches (13 mm)

Weight: 0,635 ounces (18 g)

- Power Source: CR2032 coin cell battery

- Connectivity: Wireless

- Sensors: tri-axis accelerometer

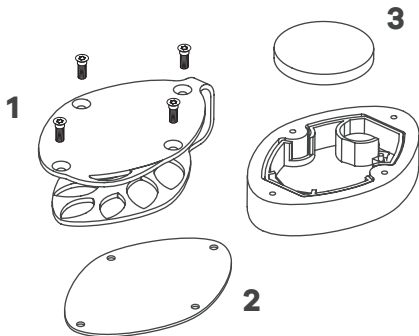
- Haptic vibration motor for alarms and notifications

- OTA update (Over the Air update)

Bellabeat LEAF works with Android 4.3 and later, iPhone 4s, iPhone 5, iPhone 5c, iPhone 5s, iPhone 6, iPhone 6 Plus, iPod Touch 5th Gen, iPad 3rd Gen, iPad Mini, iPad Air

REPLACING THE BATTERY

1. Unscrew all four screws and remove the metal clip (1)
2. Remove the rubber cover (2)
3. Remove the battery and replace it with a new one (3)
4. Put the rubber cover back
5. Put the metal clip back
6. Put back and tighten all four screws



REPLACING THE BATTERY

SAFETY INFORMATION FOR THE BATTERY

In exceptional circumstances, batteries may leak fluids that can cause a chemical burn injury or ruin your product. To avoid battery leakage:

- Do not mix old and new batteries or batteries of different types: alkaline, standard (carbon-zinc) or rechargeable (nickel-cadmium).
- Insert batteries as indicated inside the battery compartment.
- Remove batteries during long periods of non-use. Always remove exhausted batteries from the product. Dispose of batteries safely. Do not dispose of this product in a fire. The batteries inside may explode or leak.
- Never short-circuit the battery terminals.
- Use only batteries of the same or equivalent type, as recommended.
- Do not charge non-rechargeable batteries.

PROPER DISPOSAL



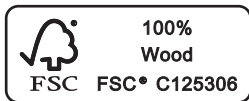
DO NOT throw the battery in household waste. The symbol of the crossed out wheeled bin indicates that the battery should not be placed in household waste. Instead they shall be handed over to the appropriate collection point for the recycling batteries.



DO NOT throw this product in household waste. This symbol indicates that this product shall not be treated as household waste. Instead it shall be handed over to the appropriate collection point for the recycling of electrical and electronic equipment. The recycling materials will help to conserve natural resources

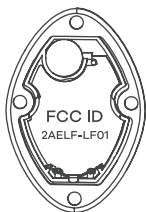
CERTIFICATION

CE 0700



CERTIFICATION

The FCC ID is located under the battery. To see the FCC ID please remove the battery.



FCC PART 15 Compliance

This device complies with Part 15 of the FCC Rules. Operation is subject to the following two conditions: (1) this device may not cause harmful interference, and (2) this device must accept any interference received, including interference that may cause undesired operation.

Changes of modifications not expressly approved by the party responsible for compliance could void the user's authority to operate the product.

CERTIFICATION

NOTE: This equipment has been tested and found to comply with the limited for a Class B digital device, pursuant to Part 15 of the FCC Rules. These limits are designed to provide reasonable protection against harmful interference in residential installation. This equipment generates, uses and can radiate radio frequency energy and if not installed and used in accordance with the instruction, may cause harmful interference to radio communications. However, there is no guarantee that interference will not occur in a particular installation. If this equipment does cause harmful interference to radio or television reception, which can be determined by turning the equipment off and on, the user is encouraged to try to correct the interference by one or more of the following measures:

- Reorient or relocate the receiving antenna.
- Increase the separation between the equipment and receiver
- Connect the equipment into an outlet on a circuit different from that to which the receiver is connected.
- Consult the dealer or an experienced radio/TV technician for help.

ATTENTION

- Bellabeat LEAF is neither waterproof nor water resistant.
- This package contains small parts that may be hazardous to children and should be kept out of reach from children. This product is not a toy – never allow children to play with this product. Always store the product out of reach from children. The bags themselves or the many small parts they contain may cause choking if ingested.



- Bellabeat LEAF is not designed or intended for children.
- Keep all products away from operating machinery.
- For screw/unscrew use only appropriate screwdriver.
- Bellabeat LEAF is not a medical device
- Bellabeat LEAF's edges can be sharp, so handle with care.

ATTENTION

- Ideal operating temperatures are 32 - 104°F (0 - 40 °C). Extreme heat or cold may damage your device or accessories.
- Keep the Bellabeat LEAF away from sources of heat and fire, such as a heater, microwave oven, stove, water heater, radiator, or candle.
- Do not expose your Bellabeat LEAF to direct sunlight (such as on a car dashboard) for prolonged periods.
- Do not drop the Bellabeat LEAF or battery. If the Bellabeat LEAF or battery is dropped, especially on a hard surface, it may be damaged.
- Do not use any chemical detergent, powder, or other chemical agents (such as alcohol and benzene) to clean the LEAF or accessories. These substances may cause damage to parts or present a fire hazard. Use a clean, soft, and dry cloth to clean the LEAF and accessories.

bellabeat™

www.bellabeat.com

facebook.com/bellabeat

[@GetBellaBeat](https://twitter.com/GetBellaBeat)

instagram.com/bellabeat

hi@bellabeat.com



Bellabeat, Inc.
2 Mint Plaza
San Francisco, CA 94103