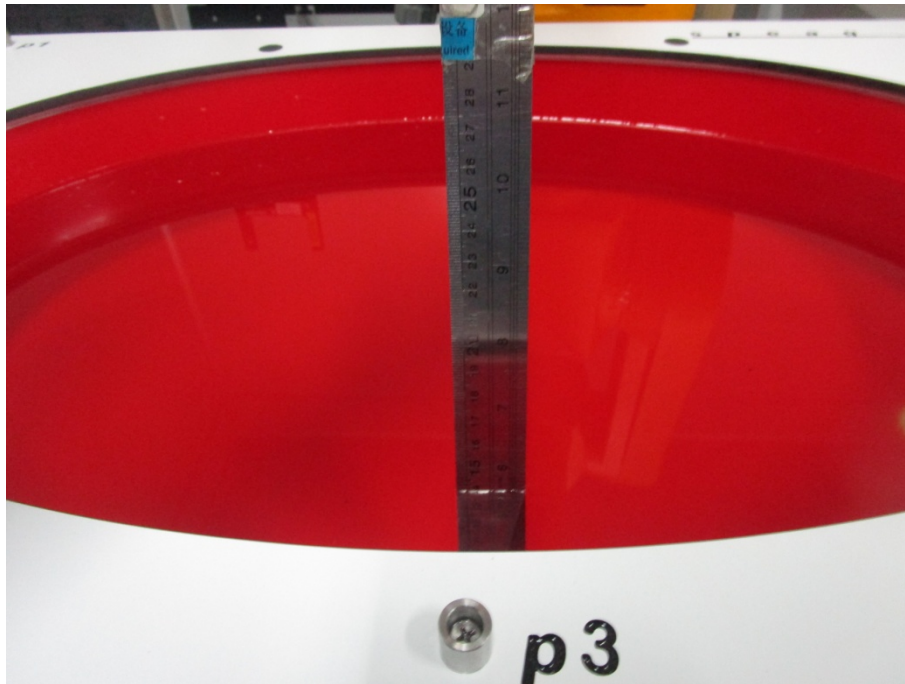


APPENDIX B EUT TEST POSITION PHOTOS

Liquid depth $\geq 15\text{cm}$



PH700L U(1):

Face Up Setup Photo(25mm)



Body Worn Back Setup Photo(0mm)



PH790L U(1):

Face Up Setup Photo(25mm)



Body Worn Back Setup Photo(0mm)

