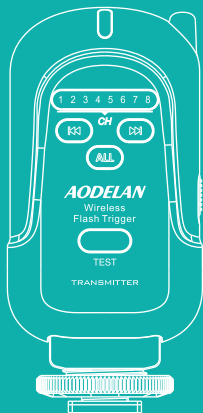


# AODELAN



Wireless Flash Trigger

无线引閃器/無線引閃器

User Manual/使用说明书/使用說明書

FT-8

FT-8(R)

FT-8(T)

## Thank you for purchasing an AODELAN product.

AODELAN FT-8 is a simple and reliable radio flash trigger. It offers a simple way to use off-camera flash. The rotating Transmitter can be used upright or in the low-profile down position. The 8-channel transmitter and receiver units have a maximum range of 200m and feature a "fire-all" channel function.

Please read this user manual as well as the user manuals provided with your camera and flash which works with FT-8 before use.

### For your safety

Before using your product, please read the following safety precaution carefully to ensure correct and safe use.

- Do not disassemble or attempt to repair it.
- Do not use the product in the presence of flammable or explosive gas.
- The product is not waterproof. Please keep away from rain, snow and high humidity conditions.
- Do not expose the product to high temperature over 45°C (e.g. left in a car trunk).
- Do not clean the product with organic solvent or alcohol-based liquid.
- Keep the product out of the reach of children.
- Consult local authorities on the proper disposal or recycling of a battery.

### Declaration of Conformity USA

Product name: Wireless Flash Trigger Transmitter Trade name: AODELAN Model number: FT-8(T) FCC ID: 2AEJW-FT8 Manufacturer: Shenzhen Aodelan Technology Co., Ltd.	Product name: Wireless Flash Trigger Receiver Trade name: AODELAN Model number: FT-8(R) Manufacturer: Shenzhen Aodelan Technology Co., Ltd.
--	--

#### FCC Interference Statement

This device complies with part 15 of the FCC Rules. Operation is subject to the following two conditions: (1) This device may not cause harmful interference, and (2) this device must accept any interference received, including interference that may cause undesired operation.

#### FCC Radiation Exposure Statement

This equipment complies with FCC RF radiation exposure limits set forth for an uncontrolled environment. This device and its antenna must not be co-located or operating in conjunction with any other antenna or transmitter.

#### FCC Class B Compliance note

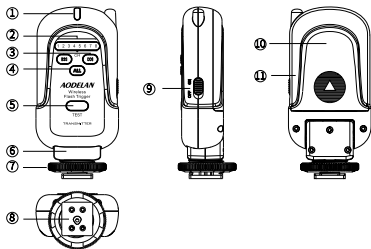
This equipment has been tested and found to comply with the limits for a Class B digital device, pursuant to Part 15 of the FCC Rules. These limits are designed to provide reasonable protection against harmful interference in a residential installation. This equipment generates, uses and can radiate radio frequency energy and, if not installed and used in accordance with the instructions, may cause harmful interference to radio communications. However, there is no guarantee that interference will not occur in a particular installation. If this equipment does cause harmful interference to radio or television reception, which can be determined by turning the equipment off and on, the user is encouraged to try to correct the interference by one or more of the following measures:

- Reorient or relocate the receiving antenna.
- Increase the separation between the equipment and receiver.
- Connect the equipment into an outlet on a circuit different from that to which the receiver is connected.
- Consult the dealer or an experienced radio/TV technician for help.

## Parts

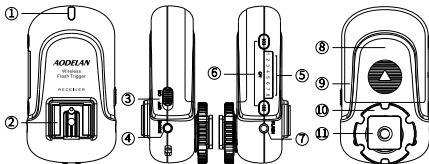
### Transmitter FT-8(T)

1. Status LED
2. Channel Numbers
3. Channel Adjustment Buttons
4. Fire All Button
5. Test Button
6. Swivel Rotator
7. Locking Ring
8. Camera Hot Shoe Connection
9. Power Switch
10. Battery Cover
11. Battery Compartment



### Receiver FT-8(R)

1. Status LED
2. Hot Shoe Connection
3. Power Switch
4. DC Power Port
5. Channel Numbers
6. Channel Adjustment Buttons
7. 3.5mm Output Port
8. Battery Cover
9. Battery Compartment
10. Locking Ring
11. Cold Shoe & 1/4"-20 Tripod Lug



## Inserting Batteries

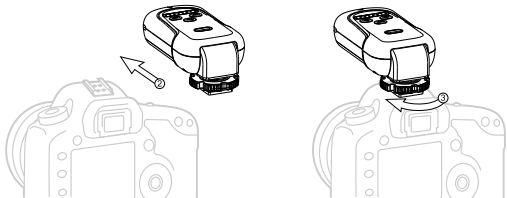
1. Press the battery cover in while pushing it away from the FT-8 transmitter or receiver. The battery cover will snap open.
2. Remove the battery cover from the FT-8.
3. Insert AA batteries as shown inside the battery compartment.
4. Replace the battery cover and push back into the locked position.

## Turning Transmitter and Receiver On/Off

1. To turn on the FT-8 transmitter or receiver - move the power switch to the "ON" position.
2. To turn off the FT-8 transmitter or receiver - move the power switch to the "OFF" position.

## Connecting the FT-8 transmitter to the camera hot shoe

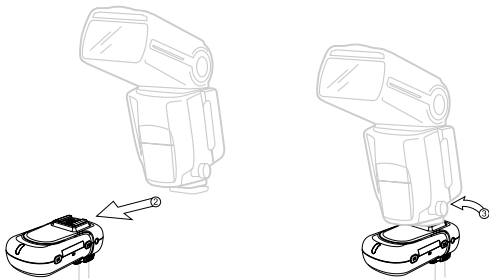
1. Turn off the camera and FT-8 transmitter.
2. Slide the FT-8 transmitter into the camera's hot shoe mount.
3. Turn the FT-8 locking ring until tight.
4. Turn on the camera, FT-8 transmitter and set the shooting mode to Manual.



## Connecting a flash to the FT-8 Receiver hot shoe

1. Turn off the flash and the FT-8 receiver.
2. Slide the flash into the receiver's hot shoe mount.
3. Lock the flash with the flash's locking mechanism.
4. Turn on the flash and the FT-8 receiver. \*
5. Set the flash to Manual mode.

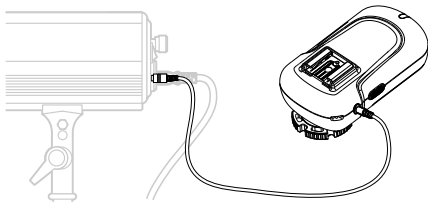
\* It is not unusual for the flash to discharge once after turning on the FT-8.



## Connecting a flash/strobe to the FT-8 receiver by sync cable

1. Turn off the flash/strobe and the FT-8 receiver.
2. Connect a cable to the receiver's 3.5 mm Sync Port.
3. Connect the opposite end of the cable to a flash or studio strobe (a 6.3 mm adapter is included for studio strobes with larger ports).
4. Turn on the flash/strobe and the FT-8 receiver. \*
5. Set the flash/strobe to Manual mode.

\* It is not unusual for the flash to discharge once after turning on the FT-8



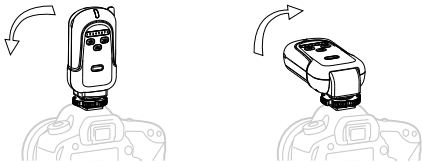
### Precautions for Use

- Turn off all devices – flashes/strobes, cameras, and AODELAN FT-8 transmitters and receivers - when connecting and disconnecting devices.
- FT-8 is designed to work with camera and flash in manual mode and has no TTL functions.
- FT-8 receiver will fire hot shoe flashes that are triggered from the center contact pin.
- Some third party flashes that are triggered from auxiliary hot shoe pins will not be triggered when used on the FT-8 receiver hot shoe.
- Flashes will be triggered via sync cable if the flash has a sync port.

### Raising and Lowering the Transmitter

The FT-8 transmitter can be used in an up or down position.

1. To lower the transmitter: After mounting, gently push the FT-8 transmitter forward to use in the down position. The transmitter will lock in place in the down position.
2. To raise the transmitter: Gently pull the FT-8 transmitter up. The transmitter will lock in place in the up position.



## **Warning:**

This equipment has been tested and found to comply with the limits for a Class B digital device, pursuant to part 15 of the FCC Rules. These limits are designed to provide reasonable protection against harmful interference in a residential installation. This equipment generates, uses and can radiate radio frequency energy and, if not installed and used in accordance with the instructions, may cause harmful interference to radio communications. However, there is no guarantee that interference will not occur in a particular installation. If this equipment does cause harmful interference to radio or television reception, which can be determined by turning the equipment off and on, the user is encouraged to try to correct the interference by one or more of the following measures:

- Reorient or relocate the receiving antenna.
- Increase the separation between the equipment and receiver.
- Connect the equipment into an outlet on a circuit different from that to which the receiver is connected.
- Consult the dealer or an experienced radio/TV technician for help.

**Caution:** Any changes or modifications to this device not explicitly approved by manufacturer could void your authority to operate this equipment.

This device complies with part 15 of the FCC Rules. Operation is subject to the following two conditions: (1) This device may not cause harmful interference, and (2) this device must accept any interference received, including interference that may cause undesired operation.

The device complies with RF specifications when the device used at 0mm from your body.

This equipment complies with IC radiation exposure limits set forth for an uncontrolled environment and meets RSS-102 of the IC radio frequency (RF) Exposure rules. This equipment has very low levels of RF energy that are deemed to comply without testing of specific absorption ratio (SAR). Cet équipement est conforme aux limites d'exposition aux rayonnements énoncées pour un environnement non contrôlé et respecte les règles d'exposition aux fréquences radioélectriques (RF) CNR-102 de l'IC. Cet équipement émet une énergie RF très faible qui est considérée conforme sans évaluation du débit d'absorption spécifique (DAS).

"To comply with FCC RF exposure compliance requirements, this grant is applicable to only mobile configurations. The antennas used for this transmitter must be installed to provide a separation distance of at least 20 cm from all persons and must not be co-located or operating in conjunction with any other antenna or transmitter."