

FCC TEST REPORT

FOR

Shenzhen Aodelan Technology Co., Ltd.

Wireless Flash Trigger Transmitter

Test Model: FT-8(T)

List Model No.: /

Prepared for : Shenzhen Aodelan Technology Co., Ltd.
Address : Floor 4, Building 1, Jinhua Industrial Park, Langkou Industrial Area, Dalang Sub-district, Longhua New District, Shenzhen, Guangdong, China

Prepared by : Shenzhen LCS Compliance Testing Laboratory Ltd
Address : 1/F., Xingyuan Industrial Park, Tongda Road, Bao'an Avenue, Bao'an District, Shenzhen, Guangdong, China

Tel : (+86)755-82591330
Fax : (+86)755-82591332
Web : www.LCS-cert.com
Mail : webmaster@LCS-cert.com

Date of receipt of test sample : July 01, 2017
Number of tested samples : 1
Sample number : Prototype
Date of Test : July 01, 2017~July 11, 2017
Date of Report : July 11, 2017

FCC TEST REPORT

FCC CFR 47 PART 15 C(15.249): 2015

Report Reference No. : LCS170714038AE

Date of Issue : July 11, 2017

Testing Laboratory Name : Shenzhen LCS Compliance Testing Laboratory Ltd.

Address : 1/F., Xingyuan Industrial Park, Tongda Road, Bao'an Avenue, Bao'an District, Shenzhen, Guangdong, China

Testing Location/ Procedure : Full application of Harmonised standards ■
Partial application of Harmonised standards □
Other standard testing method □

Applicant's Name : Shenzhen Aodelan Technology Co., Ltd.

Address : Floor 4, Building 1, Jinhua Industrial Park, Langkou Industrial Area, Dalang Sub-district, Longhua New District, Shenzhen, Guangdong, China

Test Specification

Standard : FCC CFR 47 PART 15 C(15.249): 2014 / ANSI C63.10: 2013

Test Report Form No. : LCSEMC-1.0

TRF Originator : Shenzhen LCS Compliance Testing Laboratory Ltd.

Master TRF : Dated 2011-03

Shenzhen LCS Compliance Testing Laboratory Ltd. All rights reserved.

This publication may be reproduced in whole or in part for non-commercial purposes as long as the Shenzhen LCS Compliance Testing Laboratory Ltd. is acknowledged as copyright owner and source of the material. Shenzhen LCS Compliance Testing Laboratory Ltd. takes no responsibility for and will not assume liability for damages resulting from the reader's interpretation of the reproduced material due to its placement and context.

Test Item Description : Wireless Flash Trigger Transmitter

Trade Mark : AODELAN

Test Model : FT-8(T)

Ratings : DC 3.0V by battery

Result : Positive

Compiled by:

Demi Lin

Demi Lin / File administrators

Supervised by:

Dick Su

Dick Su / Technique principal

Approved by:

Gavin Liang

Gavin Liang/ Manager

FCC -- TEST REPORT

Test Report No. : LCS170714038AE	<u>July 11, 2017</u> Date of issue
--	---------------------------------------

Test Model.....	: FT-8(T)
EUT.....	: Wireless Flash Trigger Transmitter
Applicant.....	: Shenzhen Aodelan Technology Co., Ltd.
Address.....	: Floor 4, Building 1, Jinhua Industrial Park, Langkou Industrial Area, Dalang Sub-district, Longhua New District, Shenzhen, Guangdong, China
Telephone.....	: +86 755 8631 3190
Fax.....	: +86 755 2167 7730
Manufacturer.....	: Shenzhen Aodelan Technology Co., Ltd.
Address.....	: Floor 4, Building 1, Jinhua Industrial Park, Langkou Industrial Area, Dalang Sub-district, Longhua New District, Shenzhen, Guangdong, China
Telephone.....	: +86 755 8631 3190
Fax.....	: +86 755 2167 7730
Factory.....	: Shenzhen Fudasi Technology Co., Ltd.
Address.....	: Floor 3-4, Factory Building B, Shengde Industrial Park, Hekeng Industrial Area, Langkou Community, Dalang Sub-district, Bao'an District, Shenzhen, Guangdong, China
Telephone.....	: (+86) 755-61116102
Fax.....	: (+86) 755-61116101

Test Result	Positive
--------------------	-----------------

The test report merely corresponds to the test sample.
It is not permitted to copy extracts of these test result without the written permission of the test laboratory.

Revision History

Revision	Issue Date	Revisions	Revised By
00	July 11, 2017	Initial Issue	Gavin Liang

TABLE OF CONTENTS

1. GENERAL INFORMATION	6
1.1. Description of Device (EUT).....	6
1.2. Support Equipment List.....	6
1.3. External I/O	6
1.4. Description of Test Facility	6
1.5. Statement of the measurement uncertainty.....	7
1.6. Measurement Uncertainty.....	7
1.7. Description Of Test Modes	8
2. TEST METHODOLOGY	9
2.1. EUT Configuration	9
2.2. EUT Exercise.....	9
2.3. General Test Procedures.....	9
3. CONNECTION DIAGRAM OF TEST SYSTEM.....	10
3.1. Justification	10
3.2. EUT Exercise Software	10
3.3. Special Accessories.....	10
3.4. Block Diagram/Schematics	10
3.5. Equipment Modifications.....	10
3.6. Test Setup	10
4. SUMMARY OF TEST RESULTS.....	11
5. SUMMARY OF TEST EQUIPMENT.....	12
6. ANTENNA REQUIREMENT	13
6.1. Standard Applicable.....	13
6.2. Antenna Connected Construction	13
7. RADIATED EMISSION MEASUREMENT.....	14
7.1. Standard Applicable.....	14
7.2. Instruments Setting.....	14
7.3. Test Procedure.....	15
7.4. Block Diagram of Test Setup	19
7.5. Test Results	20
7.6. Results for Radiated Emissions (Above 1GHz)	22
7.8. Results for Band edge Testing (Radiated).....	23
8. 20 DB BANDWIDTH MEASUREMENT	24
8.1. Standard Applicable.....	24
8.2. Block Diagram of Test Setup	24
8.3. Test Procedure.....	24
8.4. Test Results	25
9. TEST SETUP PHOTOGRAPHS.....	26
10. EXTERNAL AND INTERNAL PHOTOS OF THE EUT.....	26

1. GENERAL INFORMATION

1.1. Description of Device (EUT)

EUT : Wireless Flash Trigger Transmitter
Model Number : FT-8(T)
Model Declaration : /
Test Model : FT-8(T)
Hardware Version : FKT05ZM-TX-A4
Software Version : V1.0
2.4G :
Frequency Range : 2459 MHz
Channel Number : 1
Modulation Type : GFSK
Antenna Description : Internal Antenna, 3.0 dBi(Max.)
Power Supply : DC 3.0V by battery

Note: The product 2.4G application support 8CH, but the shipment only support one frequency point 2459 MHz, the 8 channels only can be set to different access code.

1.2. Support Equipment List

Manufacturer	Description	Model	Serial Number	Certificate
Lenovo	PC	B470	--	DOC

1.3. External I/O

I/O Port Description	Quantity	Cable
--	--	--

1.4. Description of Test Facility

CNAS Registration Number. is L4595.
FCC Registration Number. is 899208.
Industry Canada Registration Number. is 9642A-1.
ESMD Registration Number. is ARCB0108.
UL Registration Number. is 100571-492.
TUV SUD Registration Number. is SCN1081.
TUV RH Registration Number. is UA 50296516-001

1.5. Statement of the measurement uncertainty

The data and results referenced in this document are true and accurate. The reader is cautioned that there may be errors within the calibration limits of the equipment and facilities. The measurement uncertainty was calculated for all measurements listed in this test report acc. To CISPR 16 – 4 “Specification for radio disturbance and immunity measuring apparatus and methods – Part 4: Uncertainty in EMC Measurements” and is documented in the LCS quality system acc. To DIN EN ISO/IEC 17025. Furthermore, component and process variability of devices similar to that tested may result in additional deviation. The manufacturer has the sole responsibility of continued compliance of the device.

1.6. Measurement Uncertainty

Test Item	Frequency Range	Uncertainty	Note
Radiation Uncertainty	9KHz~30MHz	3.10dB	(1)
	30MHz~200MHz	2.96dB	(1)
	200MHz~1000MHz	3.10dB	(1)
	1GHz~26.5GHz	4.00dB	(1)
Conduction Uncertainty	150kHz~30MHz	1.63dB	(1)
Power disturbance	30MHz~300MHz	1.60dB	(1)

- (1). This uncertainty represents an expanded uncertainty expressed at approximately the 95% confidence level using a coverage factor of k=2.

1.7. Description Of Test Modes

The EUT operates in the unlicensed ISM band at 2.4GHz. The following operating modes were applied for the related test items.

All test modes were tested, only the result of the worst case was recorded in the report.

It was pre-tested on the positioned of each 3 axis. The worst case was found positioned on X-plane.

Mode of Operations	Transmitting Frequency (MHz)
GFSK	2459
For Conducted Emission	
Test Mode	TX Mode
For Radiated Emission	
Test Mode	TX Mode

Worst-case mode and channel used for 150kHz-30 MHz power line conducted emissions was the mode and channel with the highest output power, that was determined to be TX-2459MHz.

Worst-case mode and channel used for 9kHz-1000 MHz radiated emissions was the mode and channel with the highest output power, that was determined to be TX-2459MHz.

***Note: Using a temporary antenna connector for the EUT when the conducted measurements are performed.

2. TEST METHODOLOGY

All measurements contained in this report were conducted with ANSI C63.10: 2013, American National Standard of Procedures for Compliance Testing of Unlicensed Wireless Devices.

The radiated testing was performed at an antenna-to-EUT distance of 3 meters. All radiated and conducted emissions measurement was performed at Shenzhen LCS Compliance Testing Laboratory Ltd..

2.1. EUT Configuration

The EUT configuration for testing is installed on RF field strength measurement to meet the Commissions requirement and operating in a manner that intends to maximize its emission characteristics in a continuous normal application.

2.2. EUT Exercise

The EUT was operated in the engineering mode to fix the TX frequency that was for the purpose of the measurements.

According to its specifications, the EUT must comply with the requirements of the Section 15.203, 15.205, 15.207, 15.209 and 15.249 under the FCC Rules Part 15 Subpart C.

2.3. General Test Procedures

2.3.1 Conducted Emissions

According to the requirements in Section 6.2 of ANSI C63.10: 2013, AC power-line conducted emissions shall be measured in the frequency range between 0.15 MHz and 30MHz using Quasi-peak and average detector modes.

2.3.2 Radiated Emissions

The EUT is placed on a turn table and the turntable shall rotate 360 degrees to determine the position of maximum emission level. EUT is set 3m away from the receiving antenna, which varied from 1m to 4m to find out the highest emission. And also, each emission was to be maximized by changing the polarization of receiving antenna both horizontal and vertical. In order to find out the maximum emissions, exploratory radiated emission measurements were made according to the requirements in Section 6.3 of ANSI C63.10: 2013

3. CONNECTION DIAGRAM OF TEST SYSTEM

3.1. Justification

The system was configured for testing in a continuous transmit condition.

3.2. EUT Exercise Software

The EUT being measured by a battery to provide power supply, can continue to launch signals.

3.3. Special Accessories

N/A

3.4. Block Diagram/Schematics

Please refer to the related document

3.5. Equipment Modifications

Shenzhen LCS Compliance Testing Laboratory Ltd. has not done any modification on the EUT.

3.6. Test Setup

Please refer to the test setup photo.

4. SUMMARY OF TEST RESULTS

FCC Rules	Description Of Test	Result
§15.203	Antenna Requirement	Compliant
§15.207(a)	Power Line Conducted Emissions	Compliant
§15.205(a), §15.209(a), §15.249(a), §15.249(c)	Radiated Emissions Measurement	Compliant
§15.249	Band Edges Measurement	Compliant
§15.249, §15.215	20 dB Bandwidth	Compliant

5. SUMMARY OF TEST EQUIPMENT

Instrument	Manufacturer	Model No.	Serial No.	Characteristics	Cal Date	Due Date
EMC Receiver	R&S	ESCS 30	100174	9kHz – 2.75GHz	June 18,2017	June 17,2018
Signal analyzer	Agilent	E4448A(External mixers to 40GHz)	US44300469	9kHz~40GHz	July 16,2017	July 15,2018
LISN	MESS Tec	NNB-2/16Z	99079	9KHz-30MHz	June 18,2017	June 17,2018
LISN (Support Unit)	EMCO	3819/2NM	9703-1839	9KHz-30MHz	June 18,2017	June 17,2018
RF Cable-CON	UTIFLEX	3102-26886-4	CB049	9KHz-30MHz	June 18,2017	June 17,2018
ISN	SCHAFFNER	ISN ST08	21653	9KHz-30MHz	June 18,2017	June 17,2018
3m Semi Anechoic Chamber	SIDT FRANKONIA	SAC-3M	03CH03-HY	30M-1GHz 3m	June 18,2017	June 17,2018
Amplifier	SCHAFFNER	COA9231A	18667	9kHz-2GHz	June 18,2017	June 17,2018
Amplifier	Agilent	8449B	3008A02120	1GHz-26.5GHz	July 16,2016	July 15,2017
Amplifier	MITEQ	AMF-6F-260400	9121372	26.5GHz-40GHz	July 16,2016	July 15,2017
Spectrum Analyzer	Agilent	E4407B	MY41440292	9k-26.5GHz	July 16,2016	July 15,2017
MAX Signal Analyzer	Agilent	N9020A	MY50510140	20Hz~26.5GHz	Oct. 27, 2016	Oct. 26, 2017
Loop Antenna	R&S	HFH2-Z2	860004/001	9k-30MHz	June 18,2017	June 17,2018
By-log Antenna	SCHWARZBECK	VULB9163	9163-470	30MHz-1GHz	June 10,2017	June 09,2018
Horn Antenna	EMCO	3115	6741	1GHz-18GHz	June 10,2017	June 09,2018
Horn Antenna	SCHWARZBECK	BBHA9170	BBHA9170154	15GHz-40GHz	June 10,2017	June 09,2018
RF Cable-R03m	Jye Bao	RG142	CB021	30MHz-1GHz	June 18,2017	June 17,2018
RF Cable-HIGH	SUHNER	SUCOFLEX 106	03CH03-HY	1GHz-40GHz	June 18,2017	June 17,2018
Power Meter	R&S	NRVS	100444	DC-40GHz	June 18,2017	June 17,2018
Power Sensor	R&S	NRV-Z51	100458	DC-30GHz	June 18,2017	June 17,2018
Power Sensor	R&S	NRV-Z32	10057	30MHz-6GHz	June 18,2017	June 17,2018
RF CABLE-1m	JYE Bao	RG142	CB034-1m	20MHz-7GHz	June 18,2017	June 17,2018
RF CABLE-2m	JYE Bao	RG142	CB035-2m	20MHz-1GHz	June 18,2017	June 17,2018

Note: All equipment through GRGT EST calibration

6. ANTENNA REQUIREMENT

6.1. Standard Applicable

According to § 15.203, An intentional radiator shall be designed to ensure that no antenna other than that furnished by the responsible party shall be used with the device. The use of a permanently attached antenna or of an antenna that uses a unique coupling to the intentional radiator shall be considered sufficient to comply with the provisions of this section. The manufacturer may design the unit so that a broken antenna can be replaced by the user, but the use of a standard antenna jack or electrical connector is prohibited.

6.2. Antenna Connected Construction

The directional gains of antenna used for transmitting is 3.0dBi, and the antenna is connect to PCB board and no consideration of replacement. Please see EUT photo for details.

Result: Compliance.

7. RADIATED EMISSION MEASUREMENT

7.1. Standard Applicable

Emissions radiated outside of the specified frequency bands, except for harmonics, shall be attenuated by at least 50 dB below the level of the fundamental or to the general radiated emission limits in §15.209, whichever is the lesser attenuation.

20dBc in any 100 kHz bandwidth outside the operating frequency band. In case the emission fall within the restricted band specified on 15.205(a), then the 15.209(a) and 15.249 limit in the table below has to be followed.

Fundamental Frequency	Field Strength of fundamental (millivolts/meter)	Field Strength of harmonics (microvolts/meter)
902-928MHz	50	500
2400-2483.5MHz	50	500
5725-5875MHz	50	500
24.0-24.25GHz	250	2500

Frequencies (MHz)	Field Strength (microvolts/meter)	Measurement Distance (meters)
0.009~0.490	2400/F(KHz)	300
0.490~1.705	24000/F(KHz)	30
1.705~30.0	30	30
30~88	100	3
88~216	150	3
216~960	200	3
Above 960	500	3

7.2. Instruments Setting

The following table is the setting of spectrum analyzer and receiver.

Spectrum Parameter	Setting
Attenuation	Auto
Start ~ Stop Frequency	9kHz~150kHz / RB 200Hz for QP
Start ~ Stop Frequency	150kHz~30MHz / RB 9kHz for QP
Start ~ Stop Frequency	30MHz~1000MHz / RB 120kHz for QP

Spectrum Parameter	Setting
Attenuation	Auto
Start Frequency	1000 MHz
Stop Frequency	10th carrier harmonic
RB / VB (Emission in restricted band)	1MHz / 1MHz for Peak, 1 MHz / 10Hz for Average
RB / VB (Emission in non-restricted band)	1000KHz / 1000KHz for peak

7.3. Test Procedure

1) Sequence of testing 9 kHz to 30 MHz

Setup:

- The equipment was set up to simulate a typical usage like described in the user manual or described by manufacturer.
- If the EUT is a tabletop system, a rotatable table with 0.8 m height is used.
- If the EUT is a floor standing device, it is placed on the ground.
- Auxiliary equipment and cables were positioned to simulate normal operation conditions.
- The AC power port of the EUT (if available) is connected to a power outlet below the turntable.
- The measurement distance is 3 meter.
- The EUT was set into operation.

Premeasurement:

- The turntable rotates from 0° to 315° using 45° steps.
- The antenna height is 0.8 meter.
- At each turntable position the analyzer sweeps with peak detection to find the maximum of all emissions

Final measurement:

- Identified emissions during the premeasurement the software maximizes by rotating the turntable position (0° to 360°) and by rotating the elevation axes (0° to 360°).
- The final measurement will be done in the position (turntable and elevation) causing the highest emissions with QPK detector.
- The final levels, frequency, measuring time, bandwidth, turntable position, correction factor, margin to the limit and limit will be recorded. Also a plot with the graph of the premeasurement and the limit will be stored.

2) Sequence of testing 30 MHz to 1 GHz

Setup:

--- The equipment was set up to simulate a typical usage like described in the user manual or described by manufacturer.

--- If the EUT is a tabletop system, a table with 0.8 m height is used, which is placed on the ground plane.

--- If the EUT is a floor standing device, it is placed on the ground plane with insulation between both.

--- Auxiliary equipment and cables were positioned to simulate normal operation conditions

--- The AC power port of the EUT (if available) is connected to a power outlet below the turntable.

--- The measurement distance is 3 meter.

--- The EUT was set into operation.

Premeasurement:

--- The turntable rotates from 0° to 315° using 45° steps.

--- The antenna is polarized vertical and horizontal.

--- The antenna height changes from 1 to 3 meter.

--- At each turntable position, antenna polarization and height the analyzer sweeps three times in peak to find the maximum of all emissions.

Final measurement:

--- The final measurement will be performed with minimum the six highest peaks.

--- According to the maximum antenna and turntable positions of premeasurement the software maximize the peaks by changing turntable position ($\pm 45^\circ$) and antenna movement between 1 and 4 meter.

--- The final measurement will be done with QP detector with an EMI receiver.

--- The final levels, frequency, measuring time, bandwidth, antenna height, antenna polarization, turntable angle, correction factor, margin to the limit and limit will be recorded. Also a plot with the graph of the premeasurement with marked maximum final measurements and the limit will be stored.

3) Sequence of testing 1 GHz to 18 GHz

Setup:

- The equipment was set up to simulate a typical usage like described in the user manual or described by manufacturer.
- If the EUT is a tabletop system, a rotatable table with 1.5 m height is used.
- If the EUT is a floor standing device, it is placed on the ground plane with insulation between both.
- Auxiliary equipment and cables were positioned to simulate normal operation conditions
- The AC power port of the EUT (if available) is connected to a power outlet below the turntable.
- The measurement distance is 3 meter.
- The EUT was set into operation.

Premeasurement:

- The turntable rotates from 0° to 315° using 45° steps.
- The antenna is polarized vertical and horizontal.
- The antenna height is 1.5 meter.
- At each turntable position and antenna polarization the analyzer sweeps with peak detection to find the maximum of all emissions.

Final measurement:

- The final measurement will be performed with minimum the six highest peaks.
- According to the maximum found antenna polarisation and turntable position of the premeasurement the software maximizes the peaks by rotating the turntable position (0° to 360°). This measurement is repeated for different EUT-table positions (0° to 150° in 30°-steps). This procedure is repeated for both antenna polarisations.
- The final measurement will be done in the position (turntable, EUT-table and antenna polarization) causing the highest emissions with Peak and RMS detector.
- The final levels, frequency, measuring time, bandwidth, turntable position, EUT-table position, antenna polarization, correction factor, margin to the limit and limit will be recorded. Also a plot with the graph of the premeasurement with marked maximum final measurements and the limit will be stored.

4) Sequence of testing above 18 GHz

Setup:

--- The equipment was set up to simulate a typical usage like described in the user manual or described by manufacturer.

--- If the EUT is a tabletop system, a rotatable table with 1.5 m height is used.

--- If the EUT is a floor standing device, it is placed on the ground plane with insulation between both.

--- Auxiliary equipment and cables were positioned to simulate normal operation conditions

--- The AC power port of the EUT (if available) is connected to a power outlet below the turntable.

--- The measurement distance is 1 meter.

--- The EUT was set into operation.

Premeasurement:

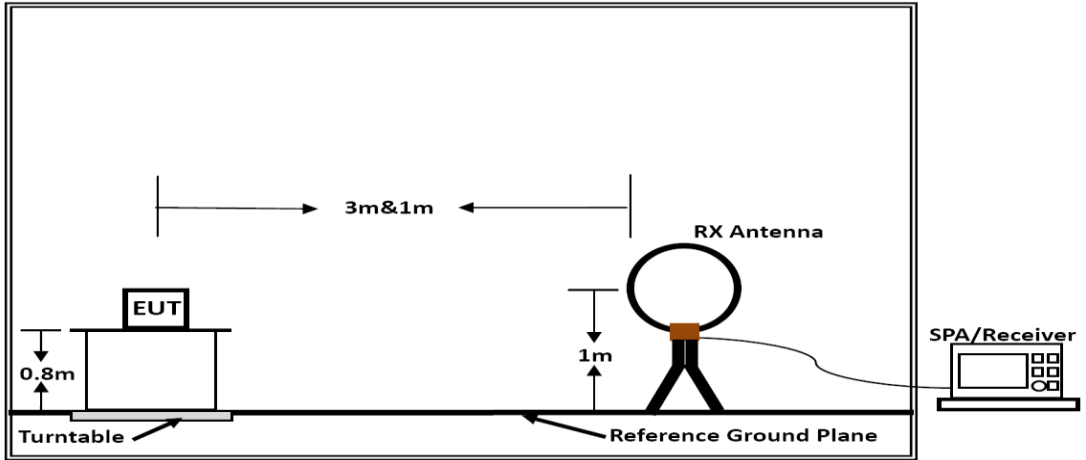
--- The antenna is moved spherical over the EUT in different polarisations of the antenna.

Final measurement:

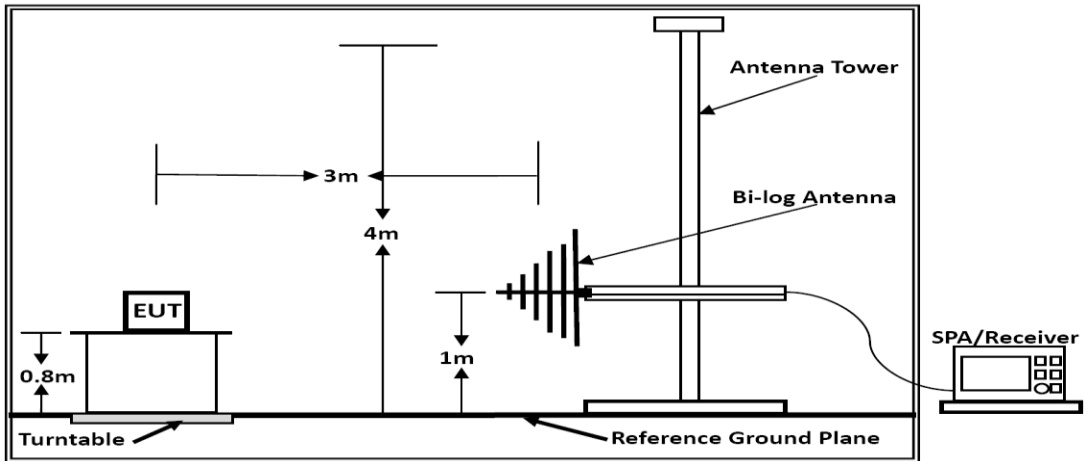
--- The final measurement will be performed at the position and antenna orientation for all detected emissions that were found during the premeasurements with Peak and RMS detector.

--- The final levels, frequency, measuring time, bandwidth, correction factor, margin to the limit and limit will be recorded. Also a plot with the graph of the premeasurement and the limit will be stored.

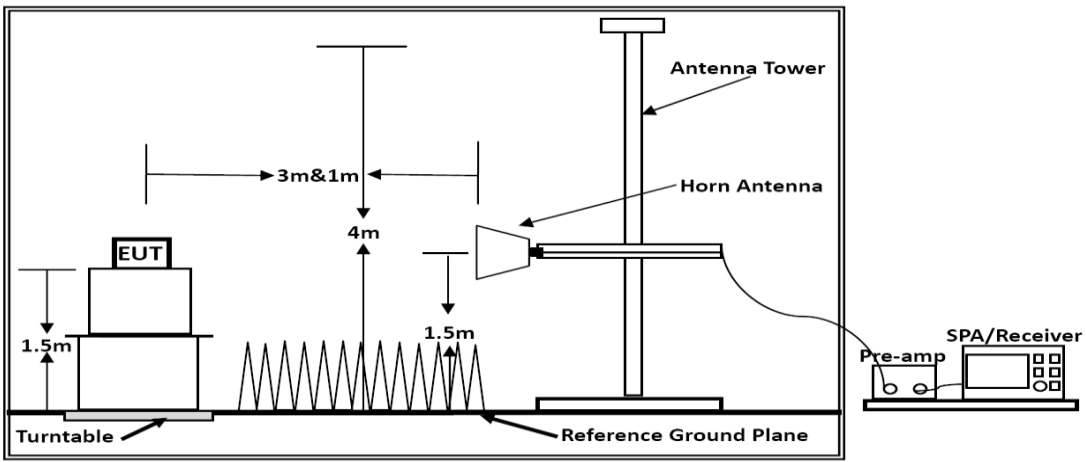
7.4. Block Diagram of Test Setup



Below 30MHz



Below 1GHz



Above 1GHz

7.5. Test Results

Results of Radiated Emissions (9kHz~30MHz)

Frequency (MHz)	Level (dBuV)	Over Limit (dB)	Over Limit (dBuV)	Remark
-	-	-	-	See Note

Note:

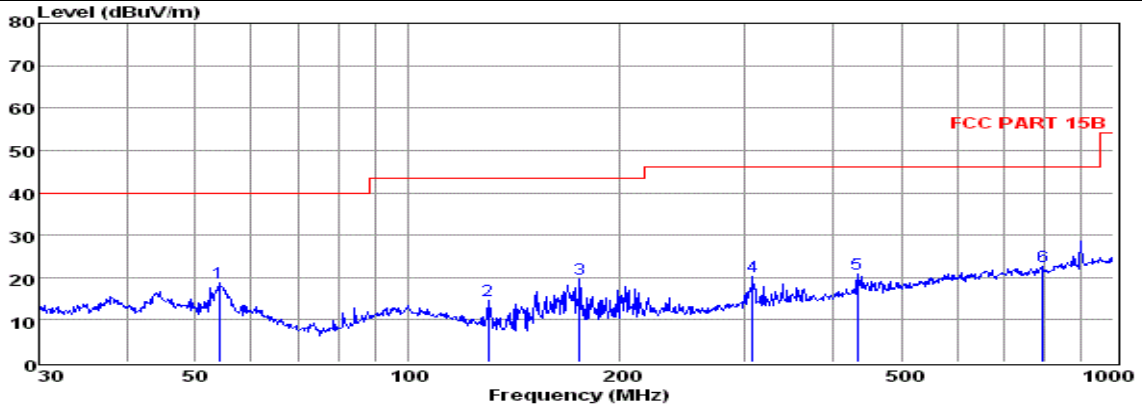
The radiated emissions from 9kHz to 30MHz are at least 20dB below the official limit and no need to report.

Distance extrapolation factor = $40 \log (\text{specific distance} / \text{test distance})$ (dB);

Limit line = specific limits (dBuV) + distance extrapolation factor.

Results of Radiated Emissions (30MHz~1000MHz)

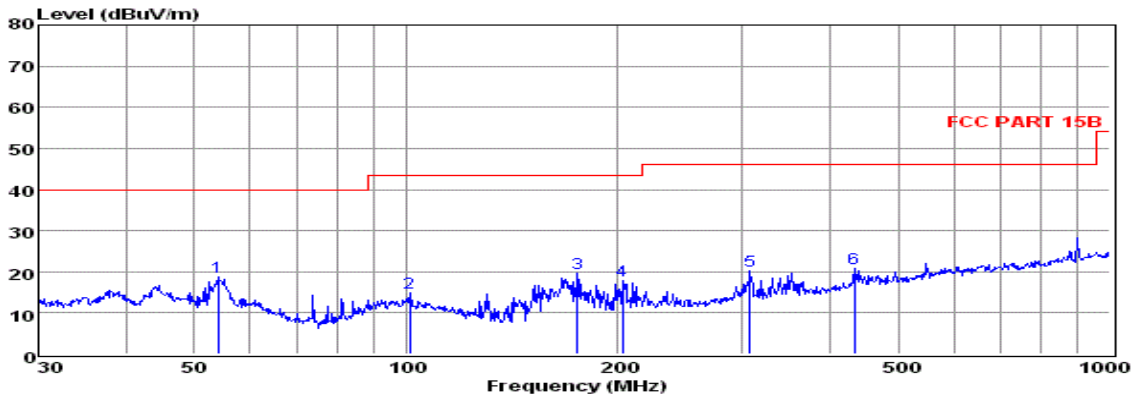
Temperature	24.5°C	Humidity	56.3%
Test Engineer	Demi Lin	Test Date	July 09, 2017
Test Mode	TX-2459MHz		



pol: HORIZONTAL

	Freq MHz	Reading dBuV	CabLos dB	Antfac dB/m	Measured dBuV/m	Limit dBuV/m	Over dB	Remark
1	54.07	5.16	0.46	13.06	18.68	40.00	-21.32	QP
2	129.92	4.80	0.76	8.94	14.50	43.50	-29.00	QP
3	175.04	9.66	0.73	9.33	19.72	43.50	-23.78	QP
4	307.83	6.03	1.08	13.17	20.28	46.00	-25.72	QP
5	434.07	4.12	1.18	15.53	20.83	46.00	-25.17	QP
6	793.40	0.89	1.73	19.98	22.60	46.00	-23.40	QP

Note: 1. All readings are Quasi-peak values.
 2. Measured= Reading + Antenna Factor + Cable Loss
 3. The emission that are 20db below the official limit are not reported



pol: VERTICAL

	Freq MHz	Reading dBuV	CabLos dB	Antfac dB/m	Measured dBuV/m	Limit dBuV/m	Over dB	Remark
1	54.07	5.16	0.46	13.06	18.68	40.00	-21.32	QP
2	101.29	1.23	0.60	13.04	14.87	43.50	-28.63	QP
3	175.04	9.66	0.73	9.33	19.72	43.50	-23.78	QP
4	202.81	6.35	0.82	10.66	17.83	43.50	-25.67	QP
5	307.83	6.03	1.08	13.17	20.28	46.00	-25.72	QP
6	434.07	4.12	1.18	15.53	20.83	46.00	-25.17	QP

Note: 1. All readings are Quasi-peak values.
 2. Measured= Reading + Antenna Factor + Cable Loss
 3. The emission that are 20db below the official limit are not reported

7.6. Results for Radiated Emissions (Above 1GHz)

Field Strength Of Fundamental (TX-2459MHz)						
Frequency (MHz)	Pol.	Measure Result (PK, dBuV/m)	Measure Result (AVG, dBuV/m)	Peak Limit (dBuV/m)	AVG Limit (dBuV/m)	Result
2459.00	H	81.30	75.64	114	94	Pass
2459.00	V	90.68	82.31	114	94	Pass

Freq. MHz	Reading dBuV	Ant. Fac dB/m	Pre. Fac. dB	Cab. Loss dB	Measured dBuV/m	Limit dBuV/m	Margin dB	Remark	Pol.
4918.00	56.11	33.30	36.44	7.68	59.67	74.00	-14.33	Peak	Horizontal
4918.00	39.47	33.30	36.44	7.68	44.27	54.00	-9.73	Average	Horizontal
12295.00	53.93	36.52	35.37	10.22	64.79	74.00	-9.21	Peak	Horizontal
12295.00	35.92	36.52	35.37	10.22	46.61	54.00	-7.39	Average	Horizontal
4918.00	58.99	33.48	36.44	7.68	63.16	74.00	-10.84	Peak	Vertical
4918.00	42.47	33.48	36.44	7.68	46.65	54.00	-7.35	Average	Vertical
12295.00	54.66	36.36	35.37	10.22	66.65	74.00	-7.35	Peak	Vertical
12295.00	36.22	36.36	35.37	10.22	48.43	54.00	-5.57	Average	Vertical

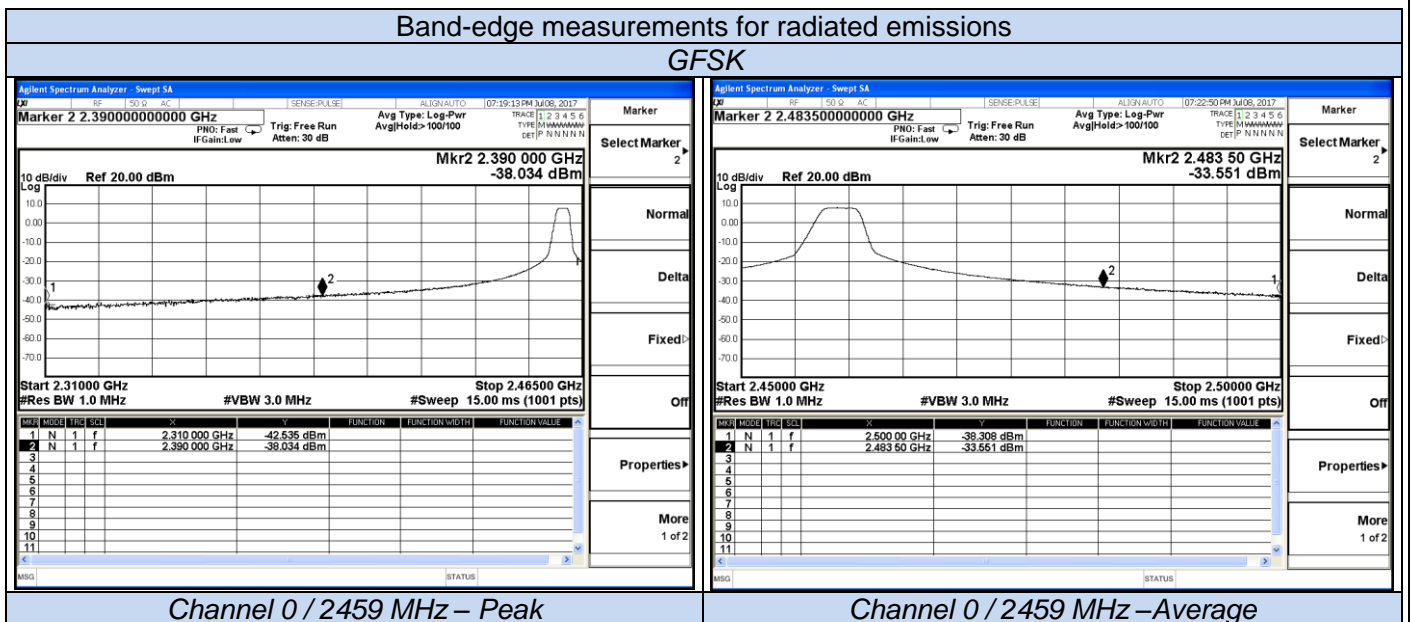
Notes:

1. Measuring frequencies from 9k~10th harmonic (ex. 26GHz), No emission found between lowest internal used/generated frequency to 30MHz.
2. Radiated emissions measured in frequency range from 9k~10th harmonic (ex. 26GHz) were made with an instrument using Peak detector mode.
3. No emission was be recorded above 18GHz means the reading of emissions are attenuated more than 20dB below the permissible limits or the field strength is too small to be measured.

7.8. Results for Band edge Testing (Radiated)

Temperature	23.8°C	Humidity	54%
Test Engineer	Demi Lin	Test Date	July 08, 2017

GFSK							
Frequency (MHz)	Conducted Power (dBm)	Antenna Gain (dBi)	Ground Reflection Factor (dB)	Covert Radiated E Level At 3m (dBuV/m)	Detector	Limit (dBuV/m)	Verdict
2310.000	-42.636	3.0	0.0	55.564	Peak	74.00	PASS
2390.000	-38.034	3.0	0.0	60.166	Peak	74.00	PASS
2483.500	-38.308	3.0	0.0	59.892	Peak	74.00	PASS
2500.000	-33.551	3.0	0.0	64.649	Peak	74.00	PASS

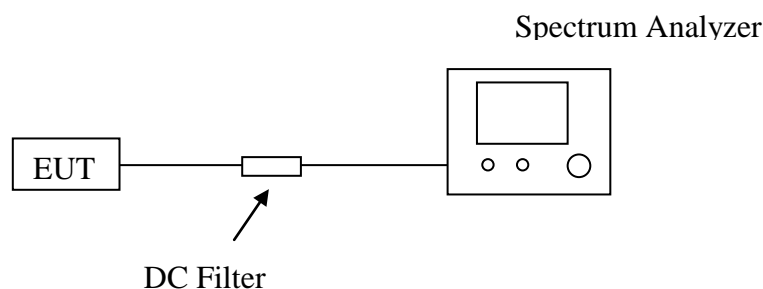


8. 20 DB BANDWIDTH MEASUREMENT

8.1. Standard Applicable

According to §15.215

8.2. Block Diagram of Test Setup



8.3. Test Procedure

Use the following spectrum analyzer settings:

Span = 3MHz

RBW = 100KHz

VBW = 300KHz

Sweep = auto

Detector function = peak

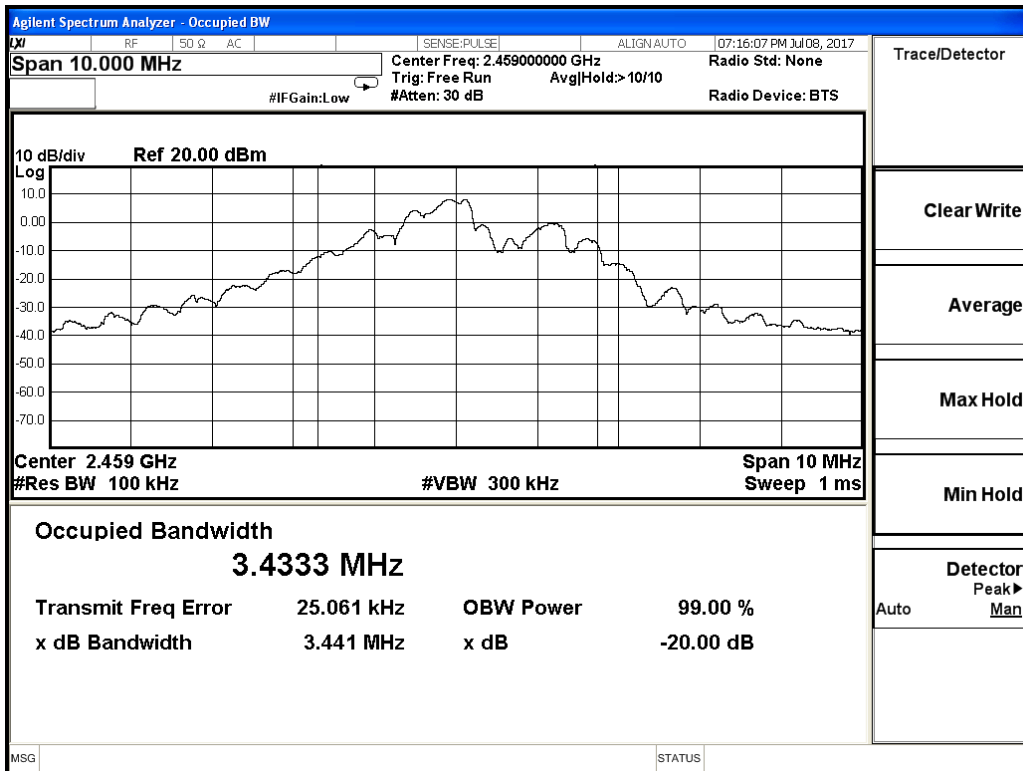
Trace = max hold

The EUT should be transmitting at its maximum data rate. Allow the trace to stabilize. Use the marker-to-peak function to set the marker to the peak of the emission. Use the marker-delta function to measure 20 dB down one side of the emission. Reset the marker-delta function, and move the marker to the other side of the emission, until it is (as close as possible to) even with the reference marker level. The marker-delta reading at this point is the 20 dB bandwidth of the emission. If this value varies with different modes of operation (e.g., data rate, modulation format, etc.), repeat this test for each variation. The limit is specified in one of the subparagraphs of this Section. Submit this plot(s).

8.4. Test Results

Temperature	25°C	Humidity	60%
Test Engineer	Demi Lin	Test Date	July 08, 2016

Test Result Of 20dB Bandwidth Measurement		
Test Frequency (MHz)	20dB Bandwidth (MHz)	Limit (MHz)
2459	3.441	Non-Specified



9. TEST SETUP PHOTOGRAPHS

Please refer to separated files for Test Setup Photos of the EUT.

10. EXTERNAL AND INTERNAL PHOTOS OF THE EUT



Fig.1



Fig.2



Fig.3



Fig.4



Fig.5



Fig.6



Fig.7

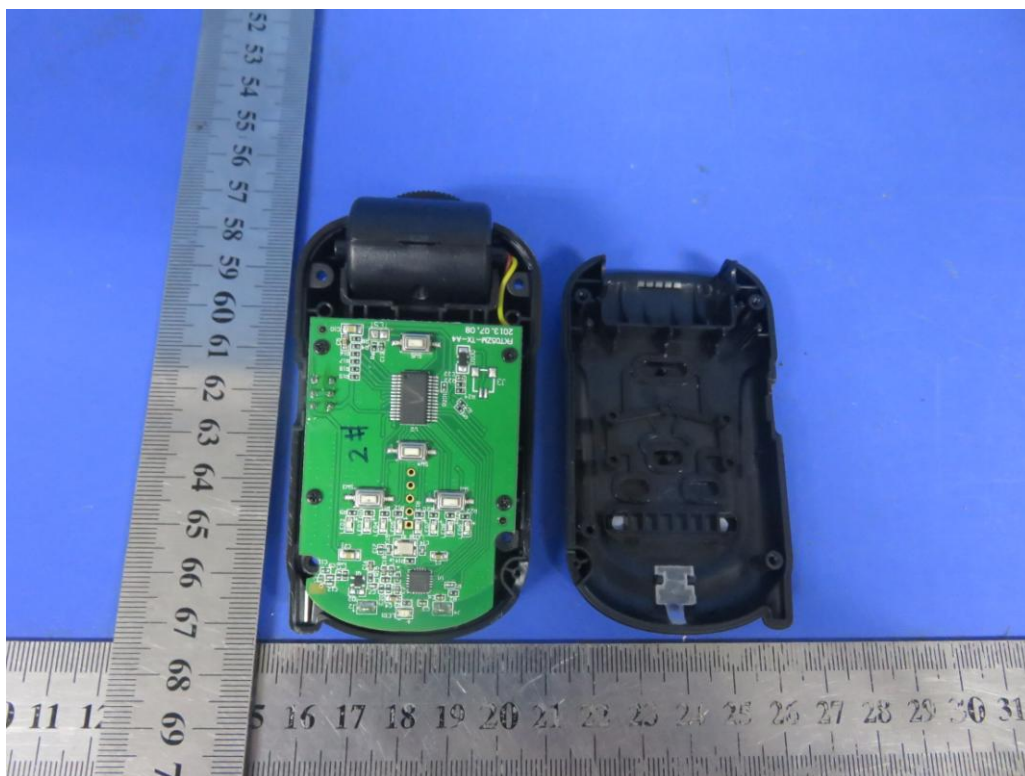


Fig.8

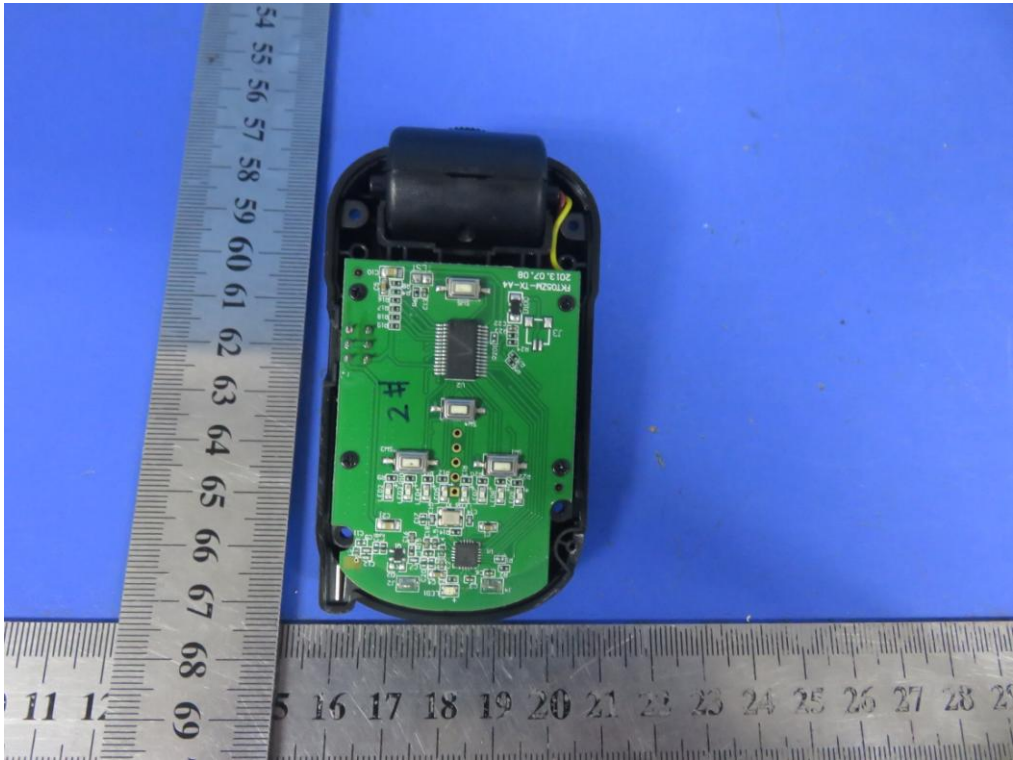


Fig.9

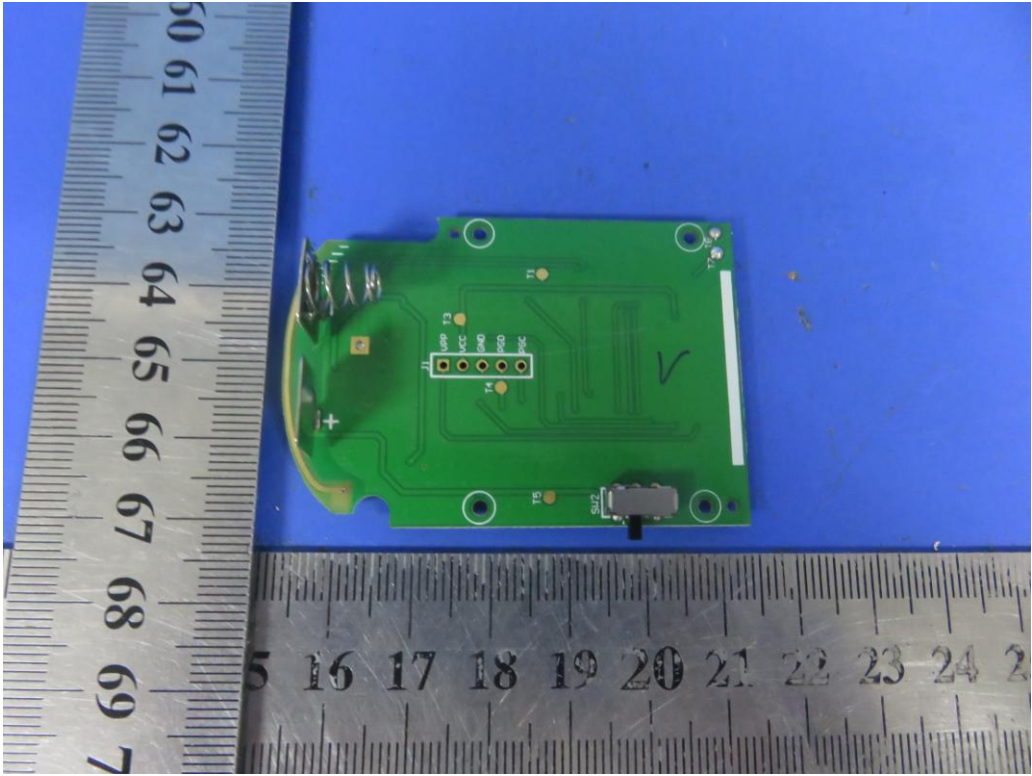


Fig.10

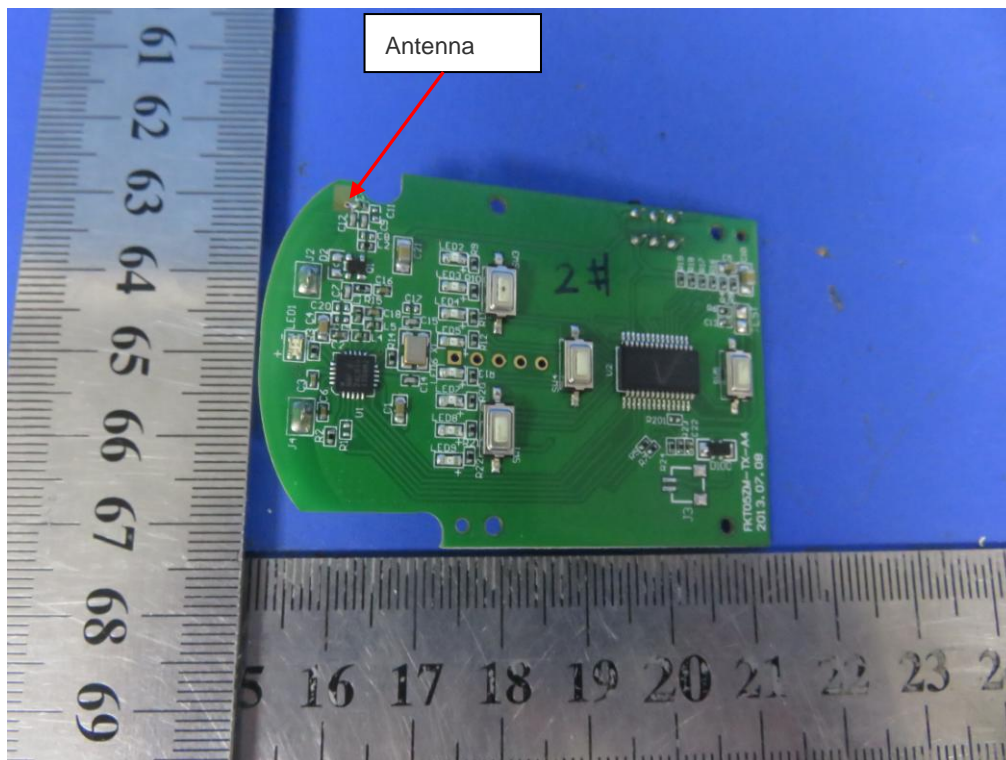


Fig.11

-----THE END OF REPORT-----