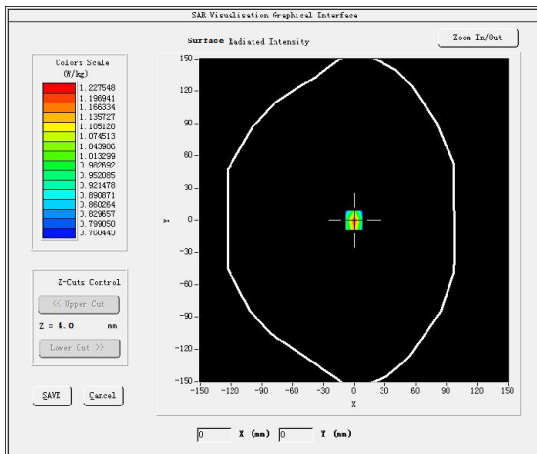


11. System Check Results

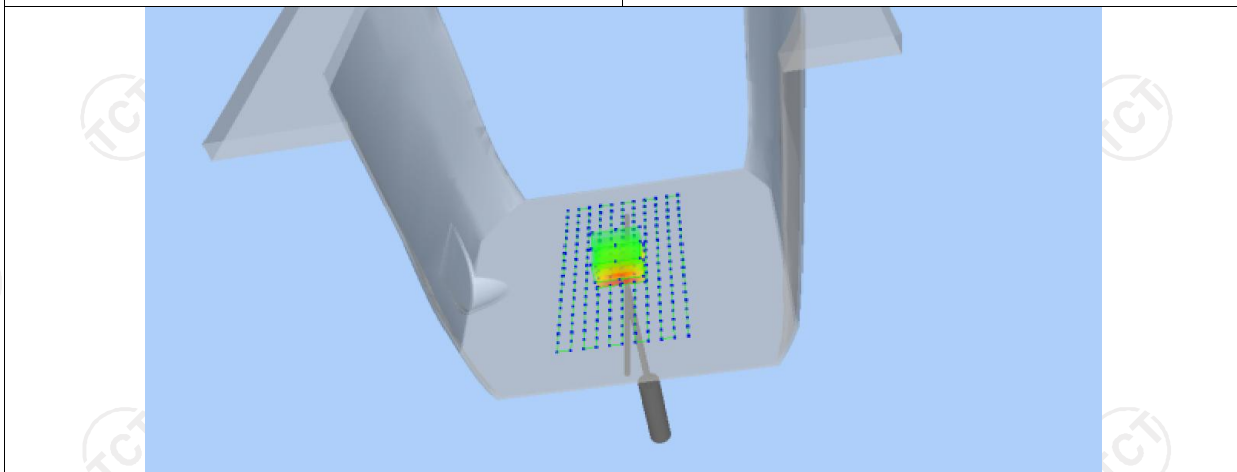
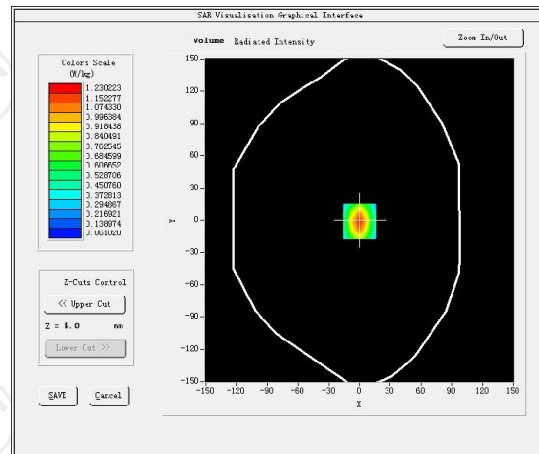
Date of measurement: 13/04/2016 Test mode: 835 (Head)
 Product Description: Validation
 Dipole Model: SID835
 E-Field Probe: SSE5 (SN 07/15 EP248)

Phantom	Validation plane
Input Power	100mW
Crest Factor	1.0
Probe Conversion factor	5.05
Frequency (MHz)	835.000000
Relative permittivity (real part)	41.417760
Relative permittivity (imaginary part)	18.129852
Conductivity (S/m)	0.874923
Variation (%)	-0.090000
SAR 10g (W/Kg)	0.570226
SAR 1g (W/Kg)	0.886036

SURFACE SAR



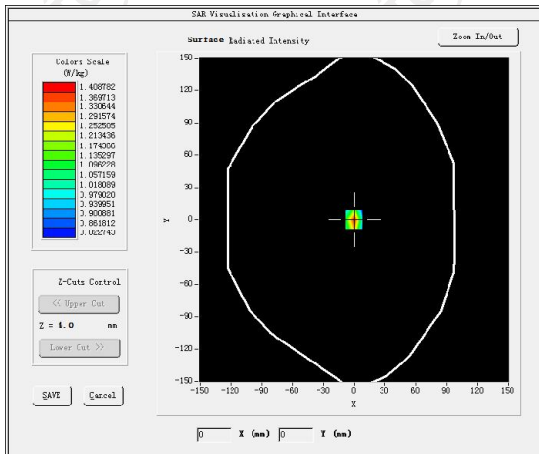
VOLUME SAR



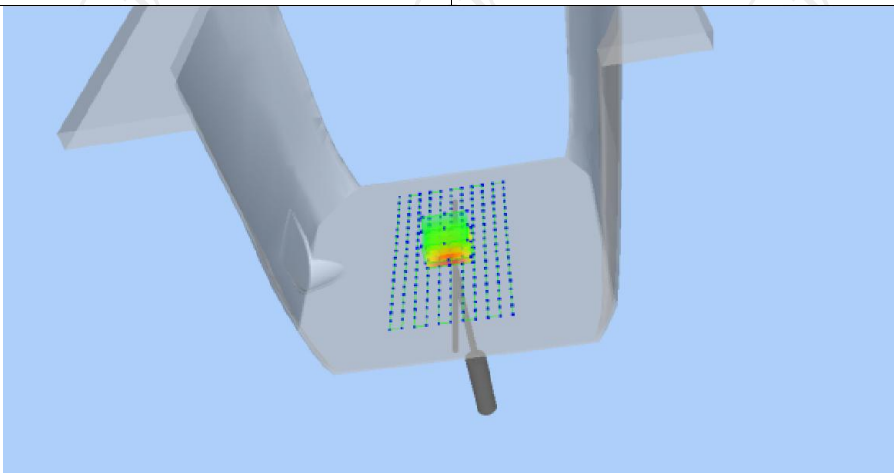
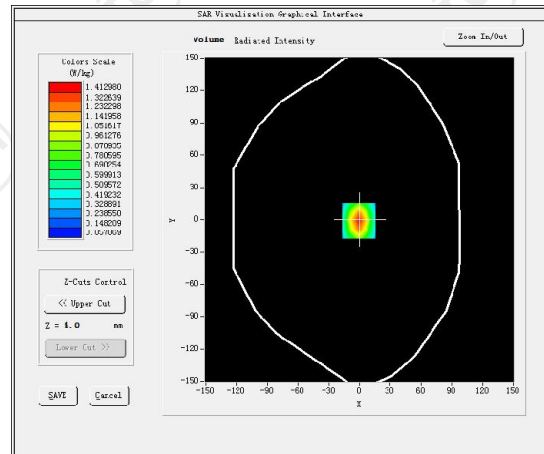
Date of measurement: 13/04/2016 Test mode: 835 (Body)
 Product Description: Validation
 Dipole Model: SID835
 E-Field Probe: SSE5 (SN 07/15 EP248)

Phantom	Validation plane
Input Power	100mW
Crest Factor	1.0
Probe Conversion factor	5.22
Frequency (MHz)	835.000000
Relative permittivity (real part)	55.242077
Relative permittivity (imaginary part)	21.378187
Conductivity (S/m)	0.978883
Variation (%)	-0.150000
SAR 10g (W/Kg)	0.633112
SAR 1g (W/Kg)	0.949433

SURFACE SAR



VOLUME SAR



Date of measurement: 14/04/2016 Test mode: 1900MHz (Head)

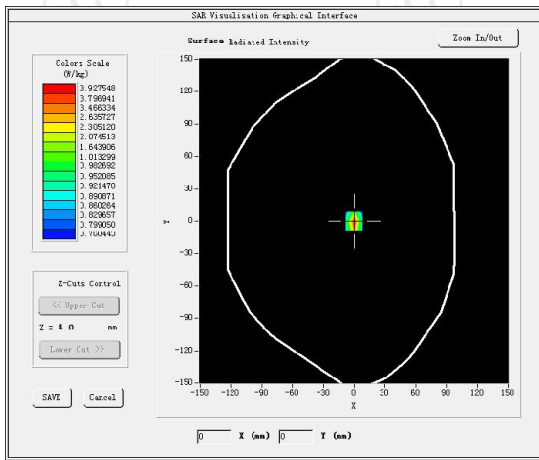
Product Description: Validation

Dipole Model: SID1900

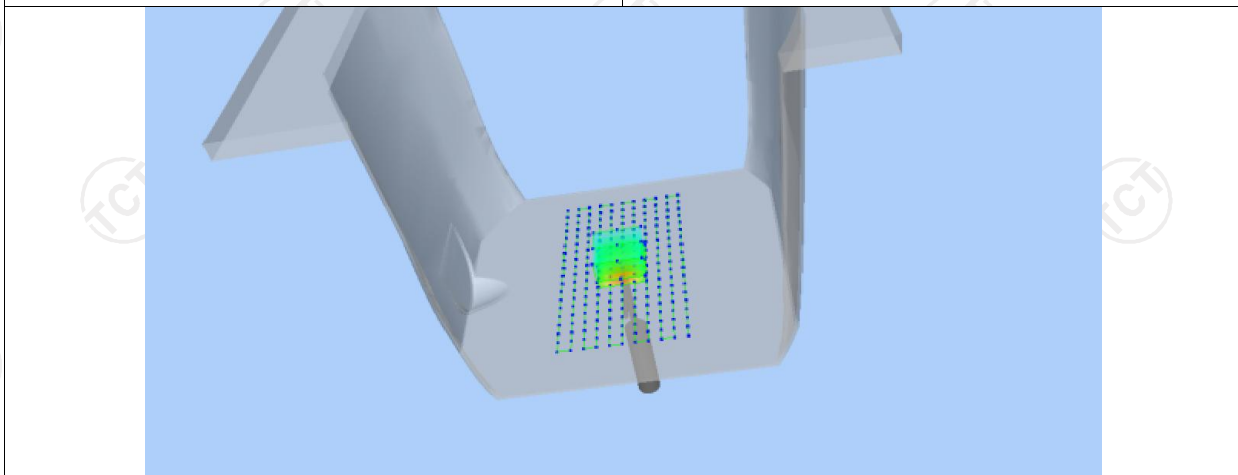
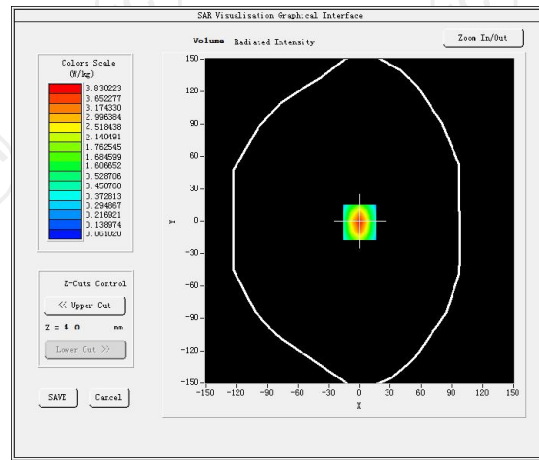
E-Field Probe: SSE5 (SN 07/15 EP248)

Phantom	Validation plane
Input Power	100mW
Crest Factor	1.0
Probe Conversion factor	4.86
Frequency (MHz)	1900.000000
Relative permittivity (real part)	39.076721
Relative permittivity (imaginary part)	12.607061
Conductivity (S/m)	1.337609
Variation (%)	-0.910000
SAR 10g (W/Kg)	1.899569
SAR 1g (W/Kg)	3.576329

SURFACE SAR



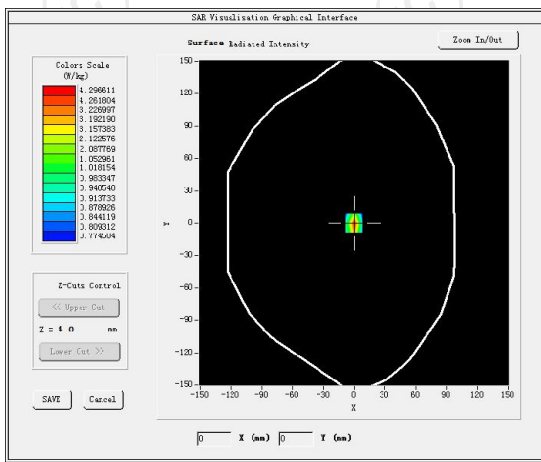
VOLUME SAR



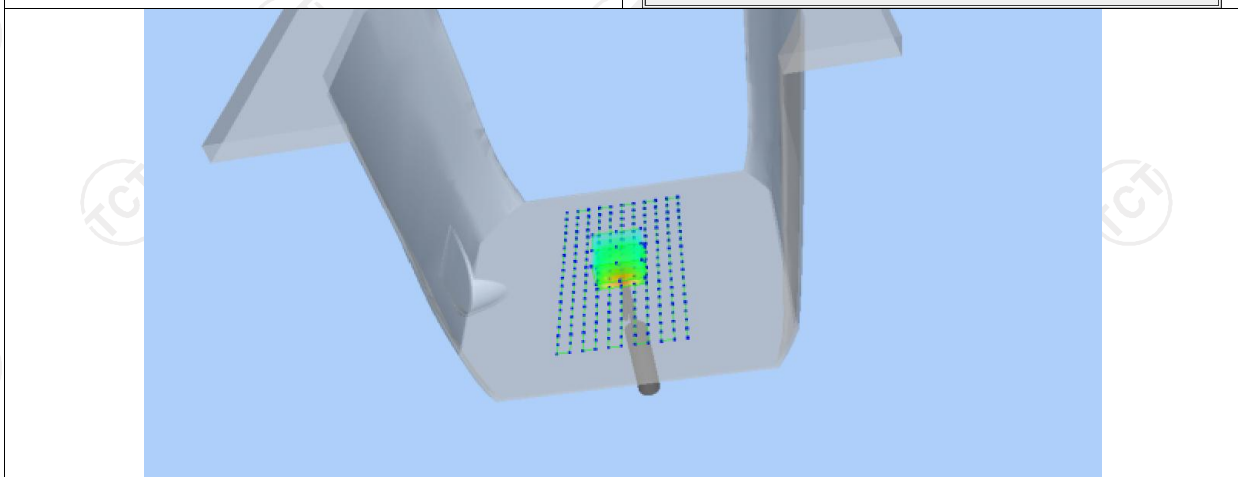
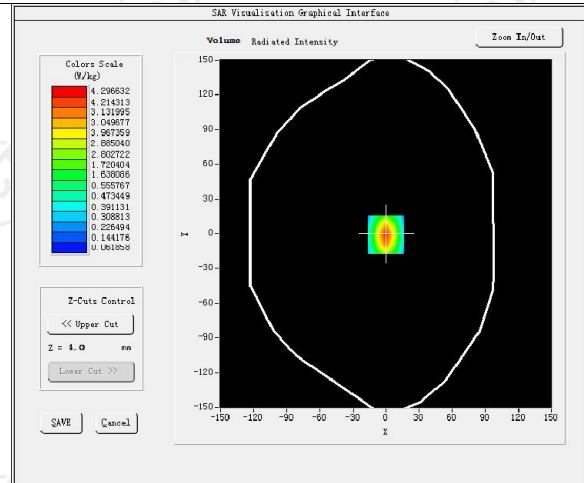
Date of measurement: 14/04/2016 Test mode: 1900MHz (Body)
Product Description: Validation
Dipole Model: SID1900
E-Field Probe: SSE5 (SN 07/15 EP248)

Phantom	Validation plane
Input Power	100mW
Crest Factor	1.0
Probe Conversion factor	5.05
Frequency (MHz)	1900.000000
Relative permittivity (real part)	53.299999
Relative permittivity (imaginary part)	14.329440
Conductivity (S/m)	1.520354
Variation (%)	1.250000
SAR 10g (W/Kg)	1.994234
SAR 1g (W/Kg)	3.766325

SURFACE SAR



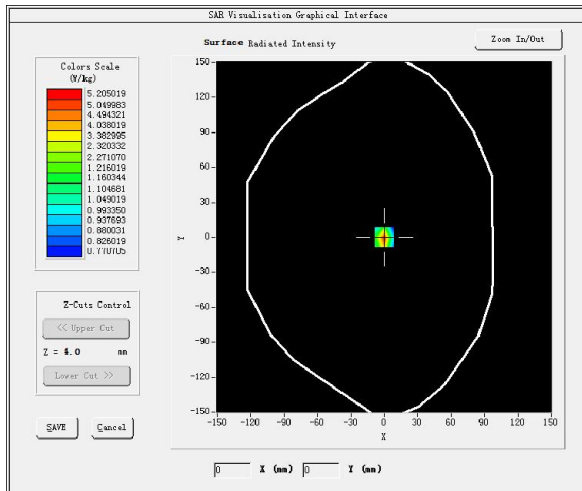
VOLUME SAR



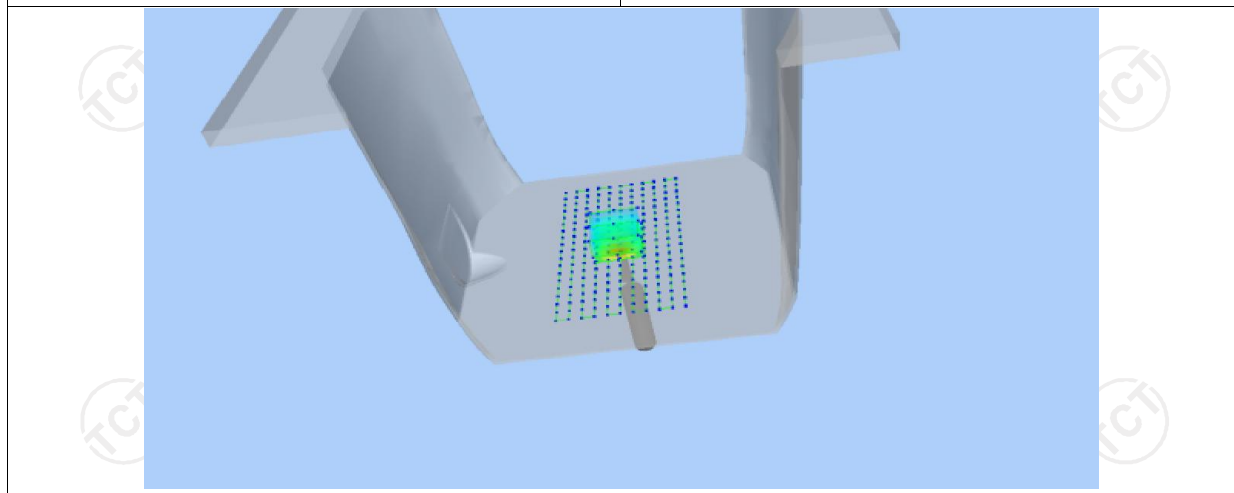
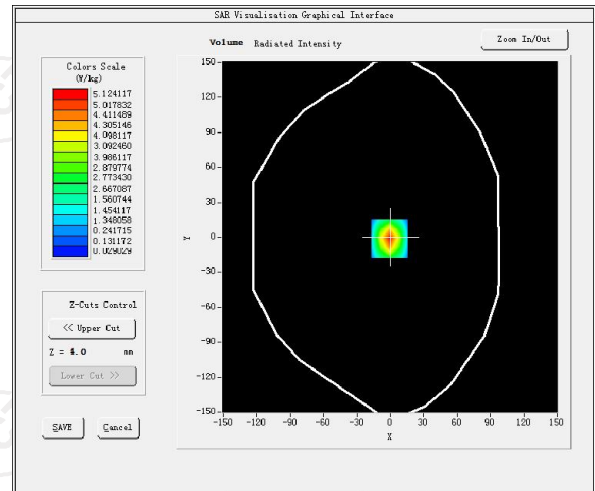
Date of measurement: 15/04/2016 Test mode: 2450MHz (Head)
 Product Description: Validation
 Dipole Model: SID2450
 E-Field Probe: SSE5 (SN 07/15 EP248)

Phantom	Validation plane
Input Power	100mW
Crest Factor	1.0
Probe Conversion factor	4.21
Frequency (MHz)	2450.000000
Relative permittivity (real part)	37.801000
Relative permittivity (imaginary part)	13.477700
Conductivity (S/m)	1.834465
Variation (%)	-0.470000
SAR 10g (W/Kg)	2.364445
SAR 1g (W/Kg)	4.994244

SURFACE SAR



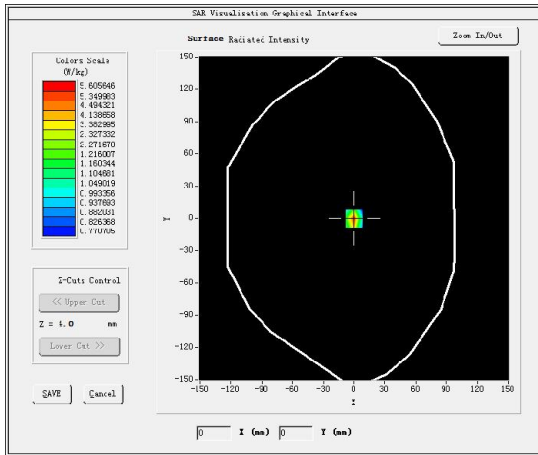
VOLUME SAR



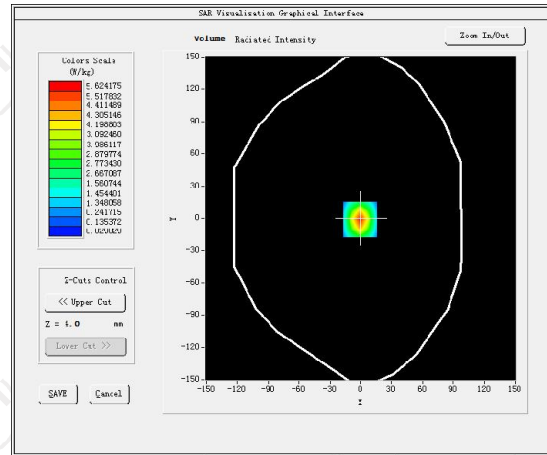
Date of measurement: 15/04/2016 Test mode: 2450MHz (Body)
 Product Description: Validation
 Dipole Model: SID2450
 E-Field Probe: SSE5 (SN 07/15 EP248)

Phantom	Validation plane
Input Power	100mW
Crest Factor	1.0
Probe Conversion factor	4.36
Frequency (MHz)	2450.000000
Relative permittivity (real part)	54.616199
Relative permittivity (imaginary part)	14.930150
Conductivity (S/m)	2.012159
Variation (%)	-0.230000
SAR 10g (W/Kg)	2.416669
SAR 1g (W/Kg)	5.066368

SURFACE SAR



VOLUME SAR



12. SAR Test Data

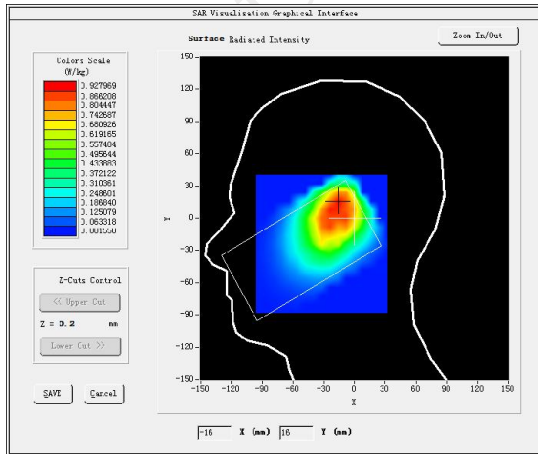
GSM850
MEASUREMENT 1

High Band SAR (Channel 189):

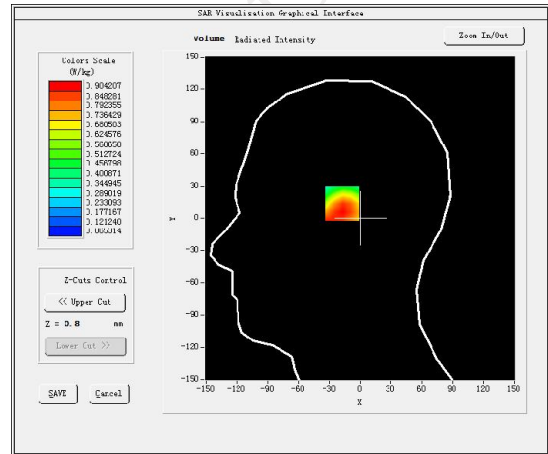
Date: 13/04/2016

Frequency (MHz)	836.400024
Relative permittivity (real part)	41.417760
Relative permittivity (imaginary part)	18.129852
Conductivity (S/m)	0.874923
Variation (%)	-3.720000
Crest Factor:	8.3
Probe Conversion factor	5.05
E-Field Probe:	SSE5 (SN 07/15 EP248)
Area Scan	<u>dx=8mm dy=8mm, h= 5.00 mm</u>
ZoomScan	<u>5x5x7, dx=8mm dy=8mm</u> <u>dz=5mm, Complete/ndx=8mm dy=8mm, h=</u> <u>5.00 mm</u>
Phantom	<u>Left head</u>
Device Position	<u>Cheek</u>
Band	<u>GSM850(voice)</u>

SURFACE SAR



VOLUME SAR



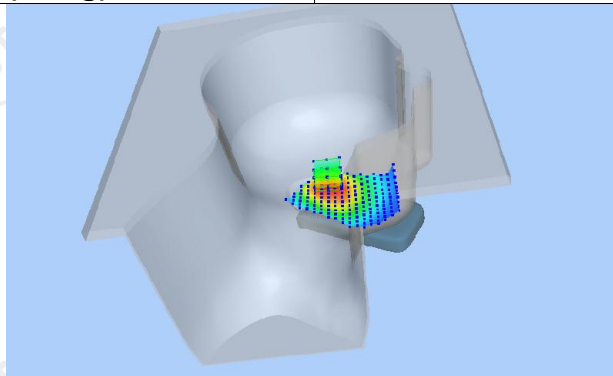
Maximum location: X=-16.00, Y=15.00 SAR Peak: 1.30 W/kg

SAR 10g (W/Kg)

0.562648

SAR 1g (W/Kg)

0.816767



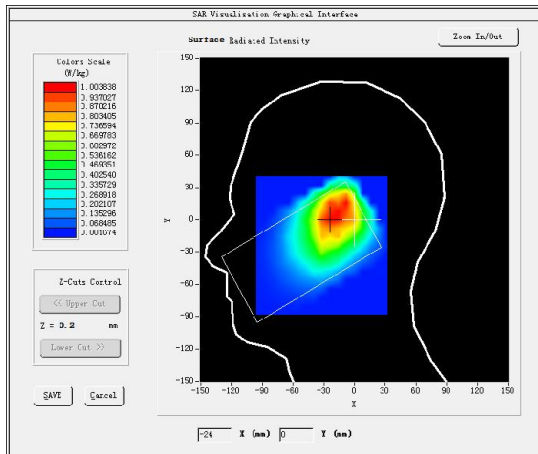
MEASUREMENT 2

High Band SAR (Channel 251):

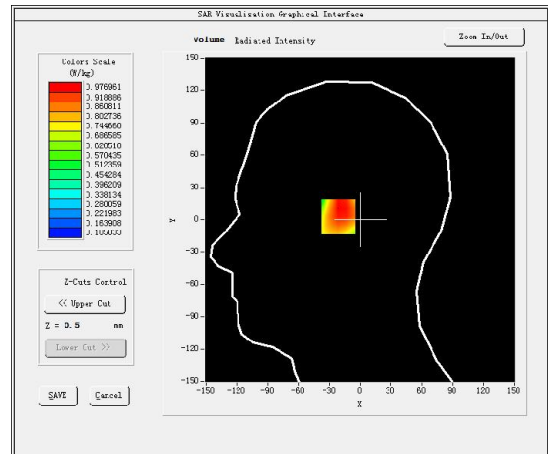
Date: 13/04/2016

Frequency (MHz)	848.799988
Relative permittivity (real part)	41.417760
Relative permittivity (imaginary part)	18.129852
Conductivity (S/m)	0.874923
Variation (%)	0.280000
Crest Factor:	8.3
Probe Conversion factor	5.05
E-Field Probe:	SSE5 (SN 07/15 EP248)
Area Scan	<u>dx=8mm dy=8mm, h= 5.00 mm</u>
ZoomScan	<u>5x5x7, dx=8mm dy=8mm</u> <u>dz=5mm, Complete/ndx=8mm dy=8mm, h=</u> <u>5.00 mm</u>
Phantom	<u>Left head</u>
Device Position	<u>Cheek</u>
Band	<u>GSM850(voice)</u>

SURFACE SAR



VOLUME SAR



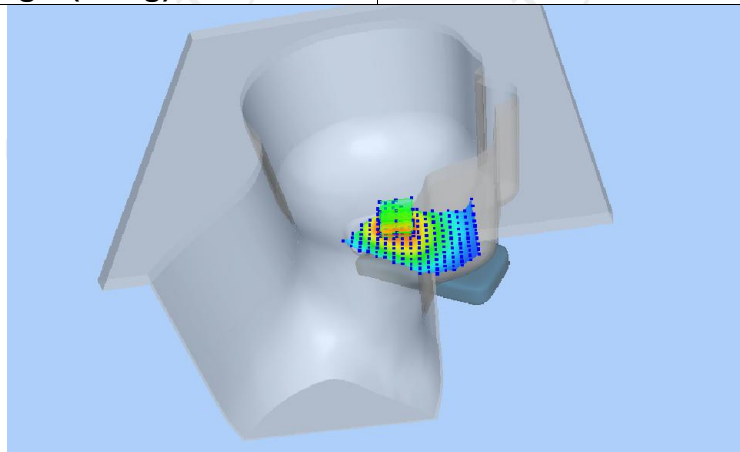
Maximum location: X=-19.00, Y=3.00 SAR Peak: 1.58 W/kg

SAR 10g (W/Kg)

0.634044

SAR 1g (W/Kg)

0.839267



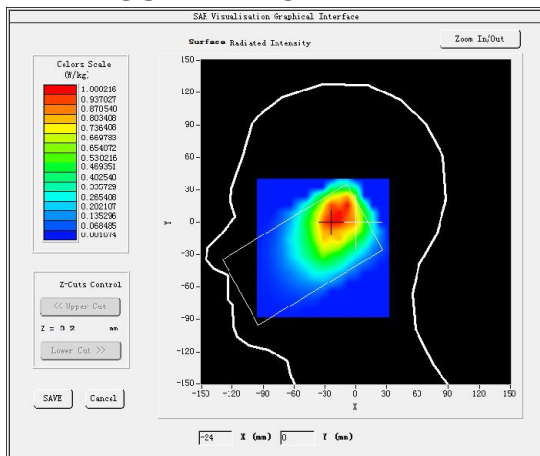
MEASUREMENT 3

High Band SAR (Channel 251):

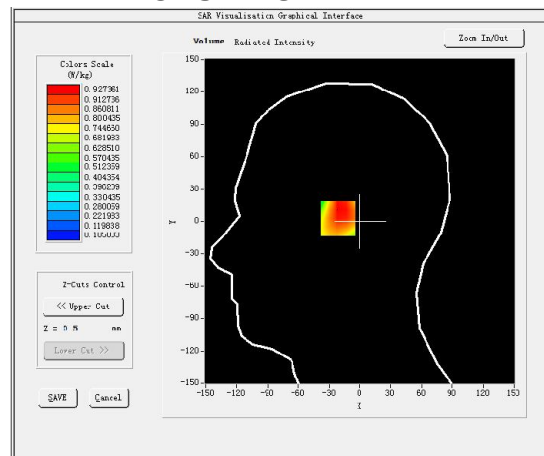
Date: 13/04/2016

Frequency (MHz)	848.799988
Relative permittivity (real part)	41.417760
Relative permittivity (imaginary part)	18.129852
Conductivity (S/m)	0.874923
Variation (%)	0.110000
Crest Factor:	8.3
Probe Conversion factor	5.05
E-Field Probe:	SSE5 (SN 07/15 EP248)
Area Scan	<u>dx=8mm dy=8mm, h= 5.00 mm</u>
ZoomScan	<u>5x5x7, dx=8mm dy=8mm</u> <u>dz=5mm, Complete/ndx=8mm dy=8mm, h=</u> <u>5.00 mm</u>
Phantom	<u>Left head(Repeated)</u>
Device Position	<u>Cheek</u>
Band	<u>GSM850(voice)</u>

SURFACE SAR



VOLUME SAR



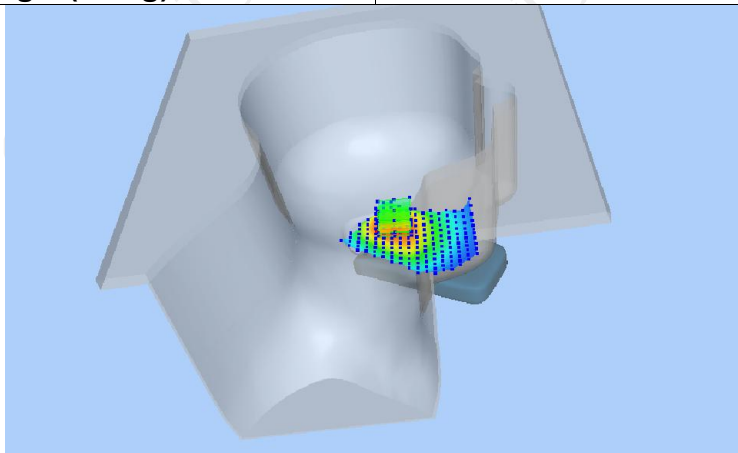
Maximum location: X=-19.00, Y=3.00 SAR Peak: 1.57 W/kg

SAR 10g (W/Kg)

0.611068

SAR 1g (W/Kg)

0.830364



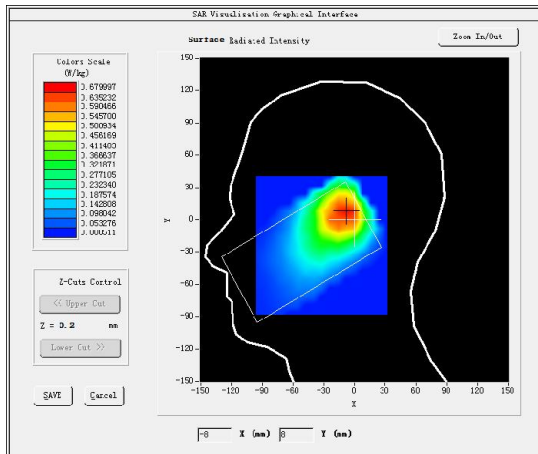
MEASUREMENT 4

High Band SAR (Channel 128):

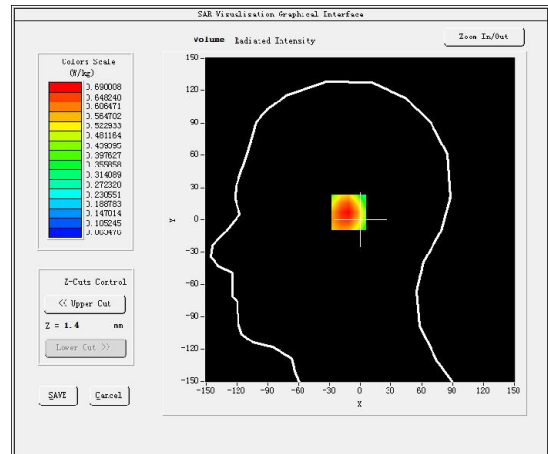
Date: 13/04/2016

Frequency (MHz)	824.200012
Relative permittivity (real part)	41.417760
Relative permittivity (imaginary part)	18.129852
Conductivity (S/m)	0.874923
Variation (%)	0.500000
Crest Factor:	8.3
Probe Conversion factor	5.05
E-Field Probe:	SSE5 (SN 07/15 EP248)
Area Scan	<u>dx=8mm dy=8mm, h= 5.00 mm</u>
ZoomScan	<u>5x5x7, dx=8mm dy=8mm</u> <u>dz=5mm, Complete/ndx=8mm dy=8mm, h=</u> <u>5.00 mm</u>
Phantom	<u>Left head</u>
Device Position	<u>Cheek</u>
Band	<u>GSM850(voice)</u>

SURFACE SAR



VOLUME SAR



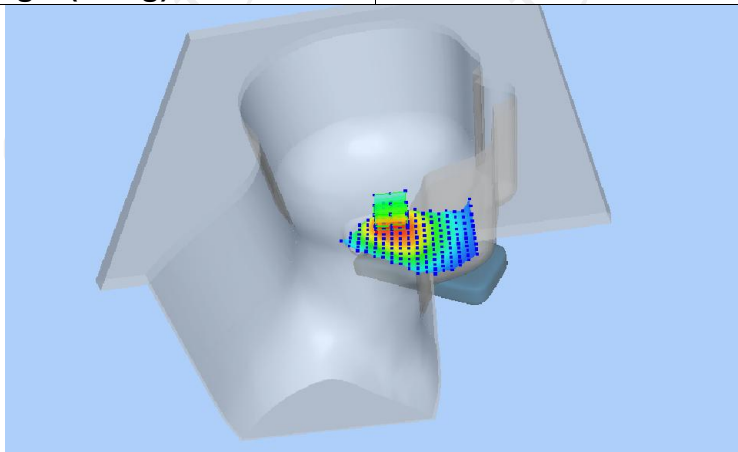
Maximum location: X=-8.00, Y=7.00 SAR Peak: 1.01 W/kg

SAR 10g (W/Kg)

0.437788

SAR 1g (W/Kg)

0.676051



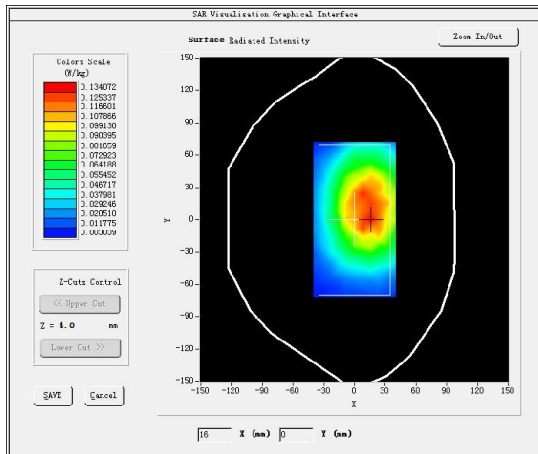
MEASUREMENT 5

High Band SAR (Channel 251):

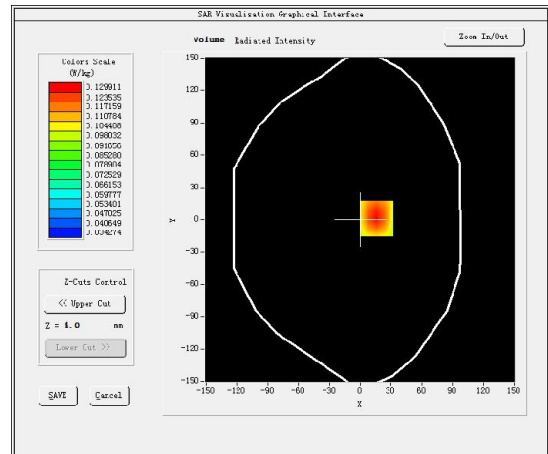
Date: 13/04/2016

Frequency (MHz)	848.799988
Relative permittivity (real part)	55.242077
Relative permittivity (imaginary part)	21.378187
Conductivity (S/m)	0.978883
Variation (%)	-3.690000
Crest Factor:	8.3
Probe Conversion factor	5.22
E-Field Probe:	SSE5 (SN 07/15 EP248)
Area Scan	<u>dx=8mm dy=8mm, h= 5.00 mm</u>
ZoomScan	<u>5x5x7, dx=8mm dy=8mm</u> <u>dz=5mm, Complete/ndx=8mm dy=8mm, h=</u> <u>5.00 mm</u>
Phantom	<u>Validation plane</u>
Device Position	<u>Body back</u>
Band	<u>GSM850(voice)</u>

SURFACE SAR



VOLUME SAR



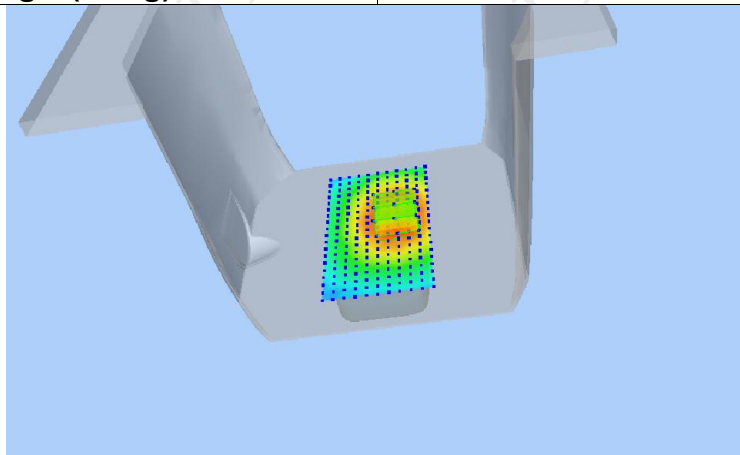
Maximum location: X=16.00, Y=1.00 SAR Peak: 0.16 W/kg

SAR 10g (W/Kg)

0.093028

SAR 1g (W/Kg)

0.126456



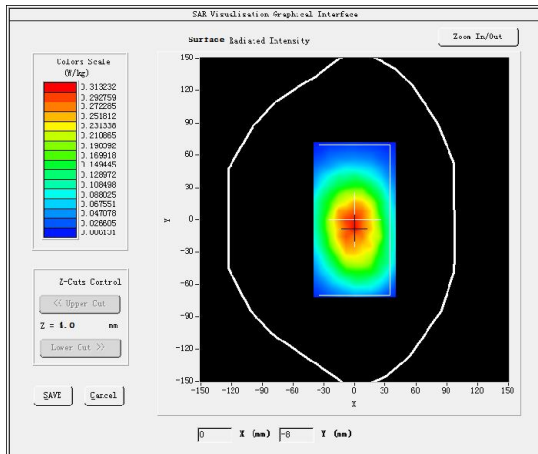
MEASUREMENT 6

High Band SAR (Channel 251):

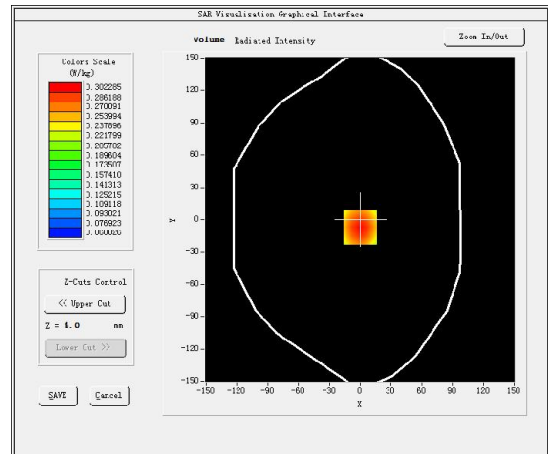
Date: 13/04/2016

Frequency (MHz)	848.799988
Relative permittivity (real part)	55.242077
Relative permittivity (imaginary part)	21.378187
Conductivity (S/m)	0.978883
Variation (%)	-1.660000
Crest Factor:	2.0
Probe Conversion factor	5.22
E-Field Probe:	SSE5 (SN 07/15 EP248)
Area Scan	<u>dx=8mm dy=8mm, h= 5.00 mm</u>
ZoomScan	<u>5x5x7, dx=8mm dy=8mm</u> <u>dz=5mm, Complete/ndx=8mm dy=8mm, h=</u> <u>5.00 mm</u>
Phantom	<u>Validation plane</u>
Device Position	<u>Body back</u>
Band	<u>GSM850(GPRS 2slot)</u>

SURFACE SAR



VOLUME SAR



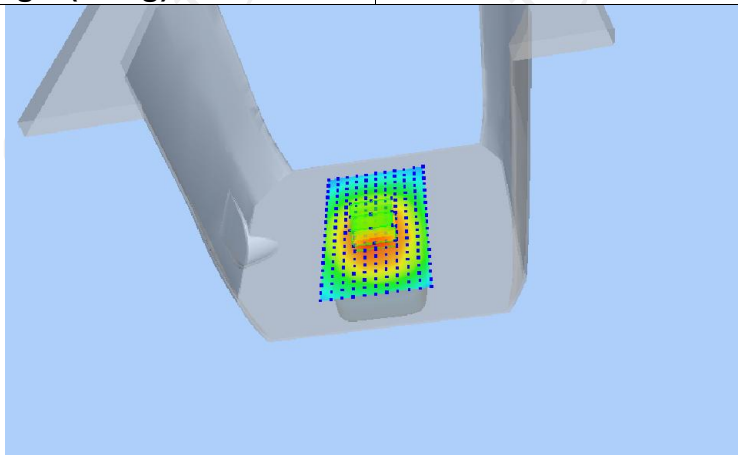
Maximum location: X=0.00, Y=-7.00 SAR Peak: 0.40 W/kg

SAR 10g (W/Kg)

0.204101

SAR 1g (W/Kg)

0.292054



GSM1900

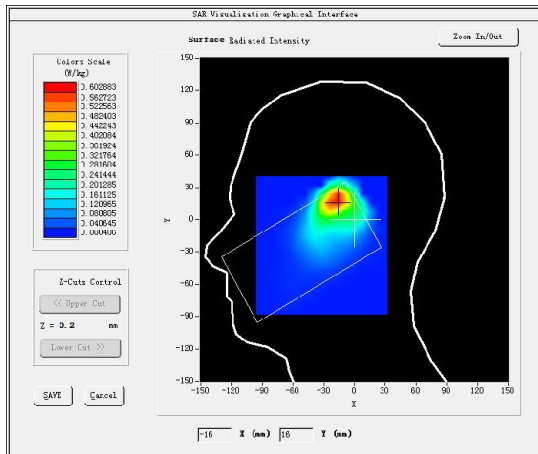
MEASUREMENT 1

Middle Band SAR (Channel 512):

Date: 14/04/2016

Frequency (MHz)	1850.199951
Relative permittivity (real part)	39.076721
Relative permittivity (imaginary part)	12.607061
Conductivity (S/m)	1.337609
Variation (%)	2.190000
Crest Factor	8.3
Probe Conversion factor	4.86
E-Field Probe:	SSE5 (SN 07/15 EP248)
Area Scan	<u>dx=8mm dy=8mm, h= 5.00 mm</u>
ZoomScan	<u>5x5x7, dx=8mm dy=8mm</u> <u>dz=5mm, Complete/ndx=8mm dy=8mm, h=</u> <u>5.00 mm</u>
Phantom	<u>Left head</u>
Device Position	<u>Cheek</u>
Band	<u>GSM1900(voice)</u>

SURFACE SAR



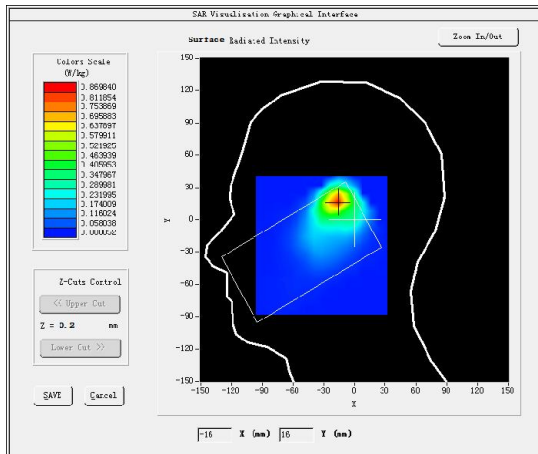
MEASUREMENT 2

Middle Band SAR (Channel 661):

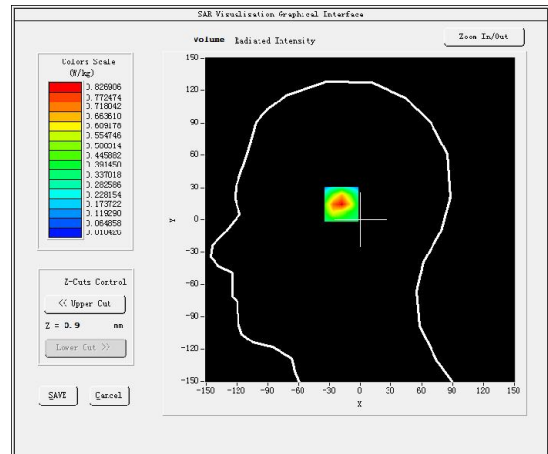
Date: 14/04/2016

Frequency (MHz)	1880.000000
Relative permittivity (real part)	39.076721
Relative permittivity (imaginary part)	12.607061
Conductivity (S/m)	1.337609
Variation (%)	1.710000
Crest Factor	8.3
Probe Conversion factor	4.86
E-Field Probe:	SSE5 (SN 07/15 EP248)
Area Scan	<u>dx=8mm dy=8mm, h= 5.00 mm</u>
ZoomScan	<u>5x5x7, dx=8mm dy=8mm</u> <u>dz=5mm, Complete/ndx=8mm dy=8mm, h=</u> <u>5.00 mm</u>
Phantom	<u>Left head</u>
Device Position	<u>Cheek</u>
Band	<u>GSM1900(voice)</u>

SURFACE SAR



VOLUME SAR



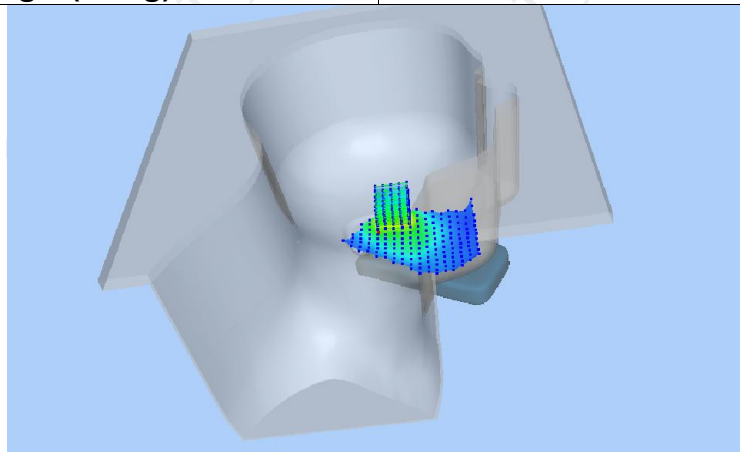
Maximum location: X=-16.00, Y=17.00 SAR Peak: 1.33 W/kg

SAR 10g (W/Kg)

0.387823

SAR 1g (W/Kg)

0.771853



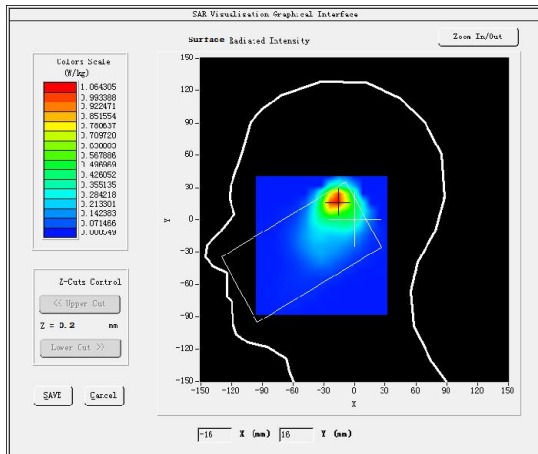
MEASUREMENT 3

Middle Band SAR (Channel810):

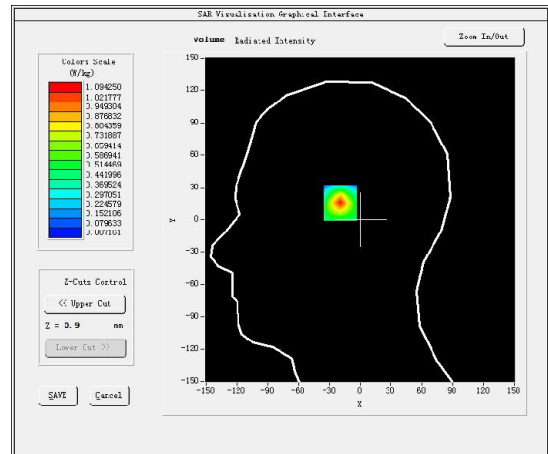
Date: 14/04/2016

Frequency (MHz)	1909.800049
Relative permittivity (real part)	39.076721
Relative permittivity (imaginary part)	12.607061
Conductivity (S/m)	1.337609
Variation (%)	2.850000
Crest Factor	8.3
Probe Conversion factor	4.86
E-Field Probe:	SSE5 (SN 07/15 EP248)
Area Scan	<u>dx=8mm dy=8mm, h= 5.00 mm</u>
ZoomScan	<u>5x5x7, dx=8mm dy=8mm</u> <u>dz=5mm, Complete/ndx=8mm dy=8mm, h=</u> <u>5.00 mm</u>
Phantom	<u>Left head</u>
Device Position	<u>Cheek</u>
Band	<u>GSM1900(voice)</u>

SURFACE SAR



VOLUME SAR



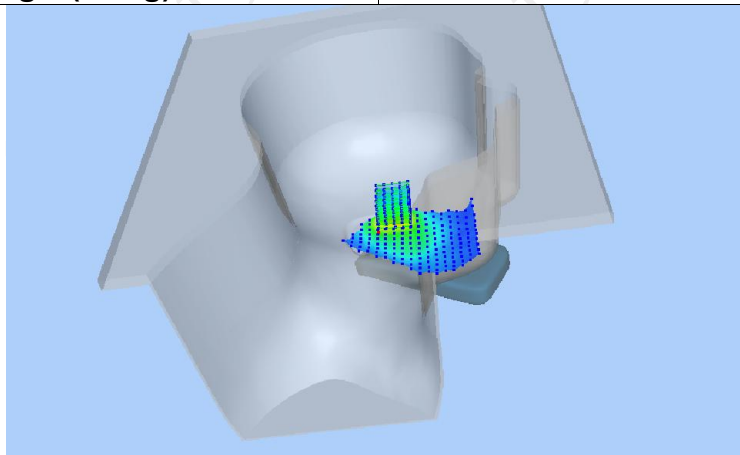
Maximum location: X=-17.00, Y=18.00 SAR Peak: 1.79 W/kg

SAR 10g (W/Kg)

0.481828

SAR 1g (W/Kg)

0.866819



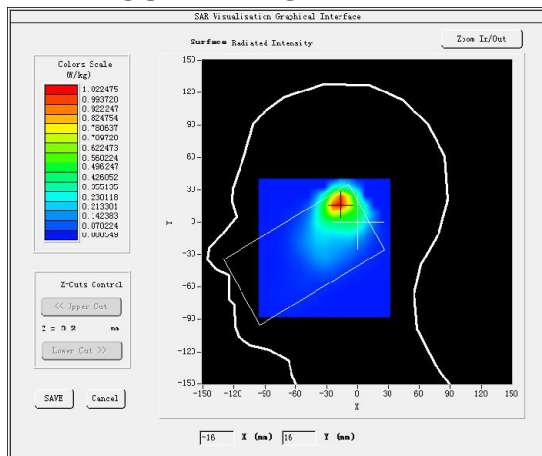
MEASUREMENT 4

Middle Band SAR (Channel810):

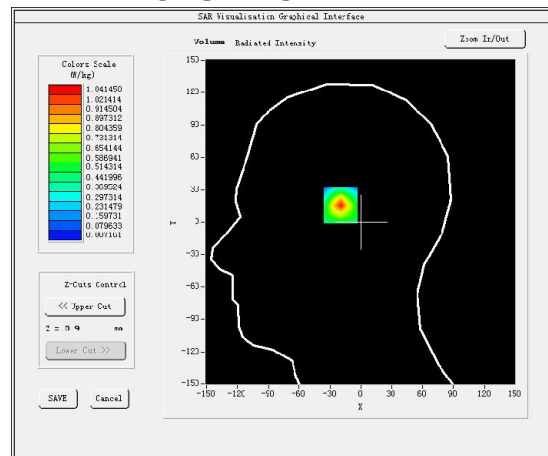
Date: 14/04/2016

Frequency (MHz)	1909.800049
Relative permittivity (real part)	39.076721
Relative permittivity (imaginary part)	12.607061
Conductivity (S/m)	1.337609
Variation (%)	-3.330000
Crest Factor	8.3
Probe Conversion factor	4.86
E-Field Probe:	SSE5 (SN 07/15 EP248)
Area Scan	<u>dx=8mm dy=8mm, h= 5.00 mm</u>
ZoomScan	<u>5x5x7, dx=8mm dy=8mm</u> <u>dz=5mm, Complete/ndx=8mm dy=8mm, h=</u> <u>5.00 mm</u>
Phantom	<u>Left head(Repeated)</u>
Device Position	<u>Cheek</u>
Band	<u>GSM1900(voice)</u>

SURFACE SAR



VOLUME SAR



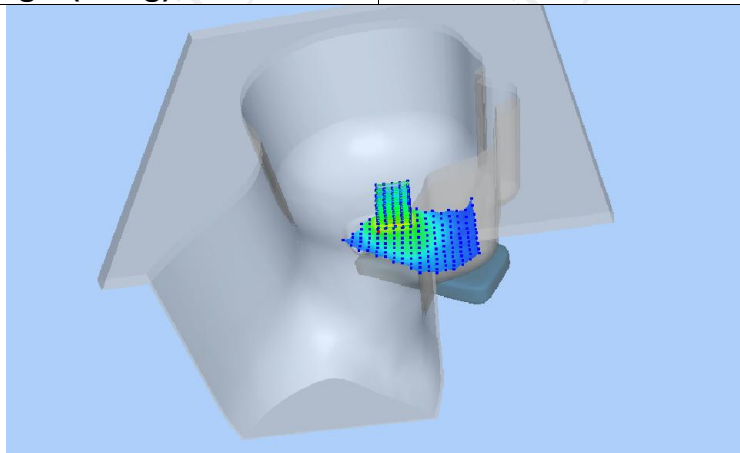
Maximum location: X=-17.00, Y=18.00 SAR Peak: 1.76 W/kg

SAR 10g (W/Kg)

0.473641

SAR 1g (W/Kg)

0.863742



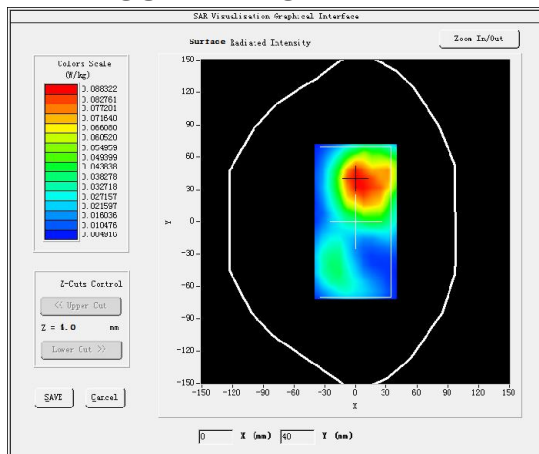
MEASUREMENT 5

Middle Band SAR (Channel 810):

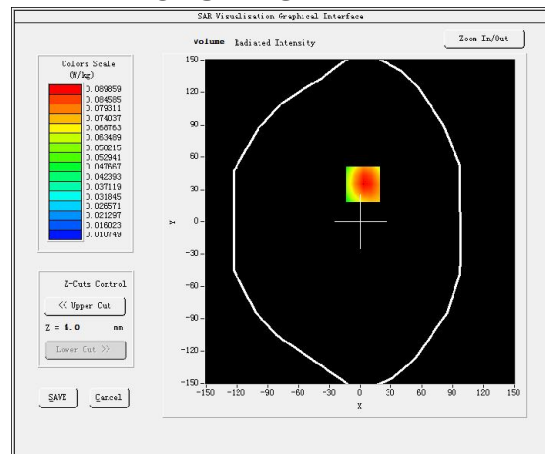
Date: 14/04/2016

Frequency (MHz)	1909.800049
Relative permittivity (real part)	50.741001
Relative permittivity (imaginary part)	14.232400
Conductivity (S/m)	1.486495
Variation (%)	-0.830000
Crest Factor	8.3
Probe Conversion factor	5.05
E-Field Probe:	SSE5 (SN 07/15 EP248)
Area Scan	<u>dx=8mm dy=8mm, h= 5.00 mm</u>
ZoomScan	<u>5x5x7, dx=8mm dy=8mm</u> <u>dz=5mm, Complete/ndx=8mm dy=8mm, h=</u> <u>5.00 mm</u>
Phantom	<u>Validation plane</u>
Device Position	<u>Body back</u>
Band	<u>GSM1900(voice)</u>

SURFACE SAR



VOLUME SAR



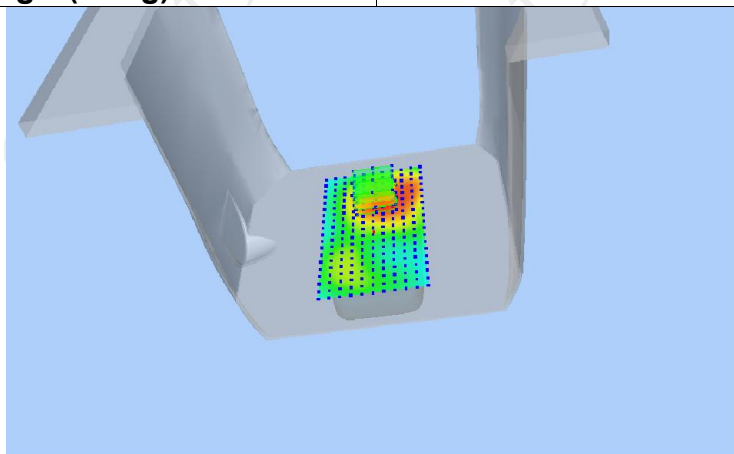
Maximum location: X=3.00, Y=35.00 SAR Peak: 0.13 W/kg

SAR 10g (W/Kg)

0.056093

SAR 1g (W/Kg)

0.086862



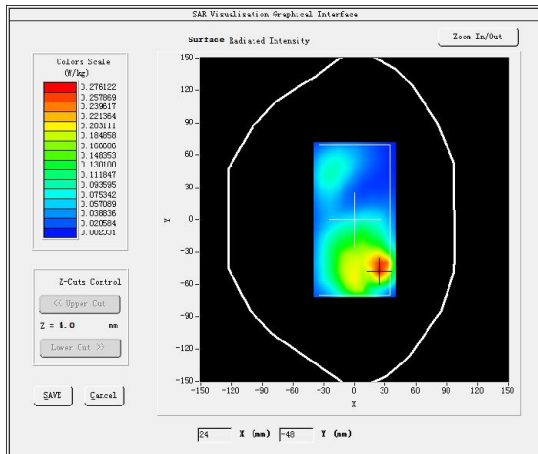
MEASUREMENT 7

Middle Band SAR (Channel 810):

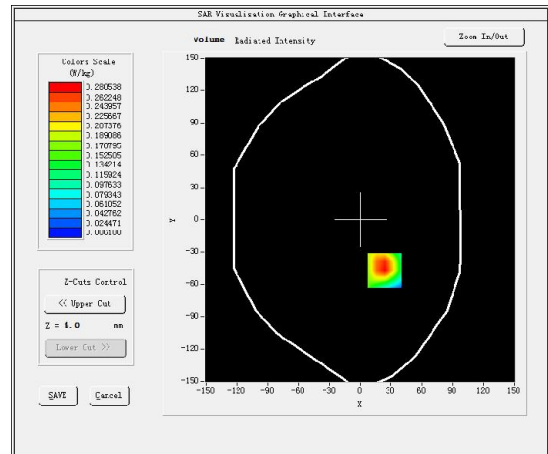
Date: 14/04/2016

Frequency (MHz)	1909.800049
Relative permittivity (real part)	50.741001
Relative permittivity (imaginary part)	14.232400
Conductivity (S/m)	1.486495
Variation (%)	0.650000
Crest Factor	2.0
Probe Conversion factor	5.05
E-Field Probe:	SSE5 (SN 07/15 EP248)
Area Scan	<u>dx=8mm dy=8mm, h= 5.00 mm</u>
ZoomScan	<u>5x5x7, dx=8mm dy=8mm</u> <u>dz=5mm, Complete/ndx=8mm dy=8mm, h=</u> <u>5.00 mm</u>
Phantom	<u>Validation plane</u>
Device Position	<u>Body back</u>
Band	<u>GSM1900(GPRS 3slot)</u>

SURFACE SAR



VOLUME SAR



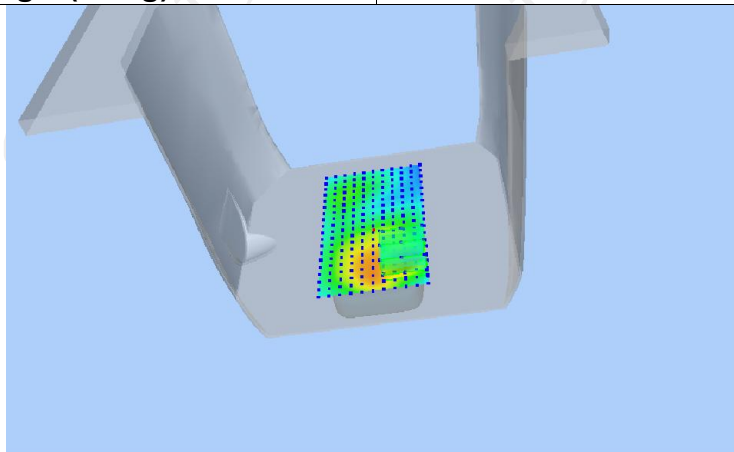
Maximum location: X=24.00, Y=-47.00 SAR Peak: 0.46 W/kg

SAR 10g (W/Kg)

0.147554

SAR 1g (W/Kg)

0.270169



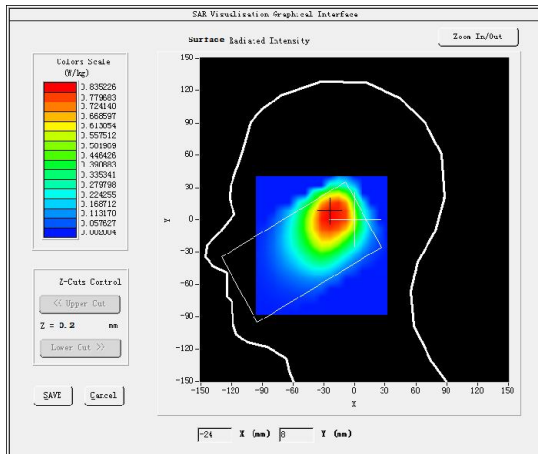
WCDMA Band V
MEASUREMENT 1

Low Band SAR (Channel 4132):

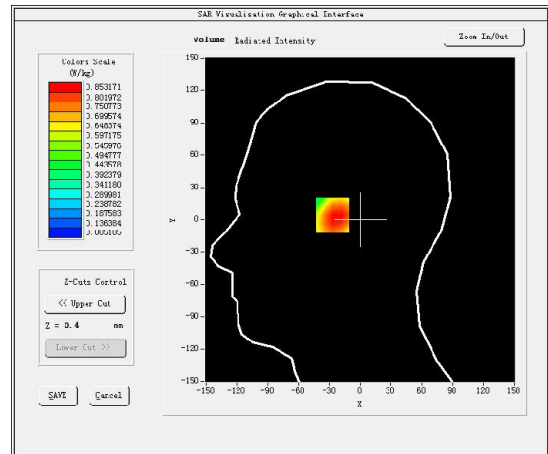
Date: 13/04/2016

Frequency (MHz)	826.400024
Relative permittivity (real part)	39.076721
Relative permittivity (imaginary part)	12.607061
Conductivity (S/m)	1.337609
Variation (%)	-0.240000
Crest Factor:	1.0
Probe Conversion factor	5.05
E-Field Probe:	SSE5 (SN 07/15 EP248)
Area Scan	<u>dx=8mm dy=8mm, h= 5.00 mm</u>
ZoomScan	<u>5x5x7, dx=8mm dy=8mm</u> <u>dz=5mm, Complete/ndx=8mm dy=8mm, h=</u> <u>5.00 mm</u>
Phantom	<u>Left head</u>
Device Position	<u>Cheek</u>
Band	<u>BAND5_WCDMA850</u>

SURFACE SAR



VOLUME SAR



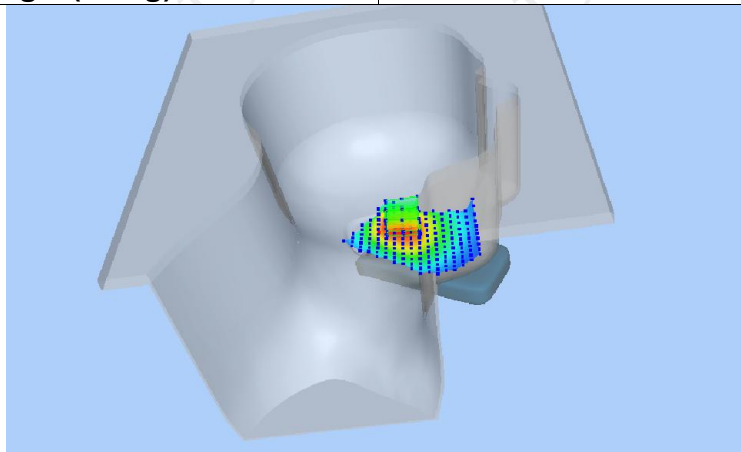
Maximum location: X=-25.00, Y=5.00 SAR Peak: 1.21 W/kg

SAR 10g (W/Kg)

0.555946

SAR 1g (W/Kg)

0.830818



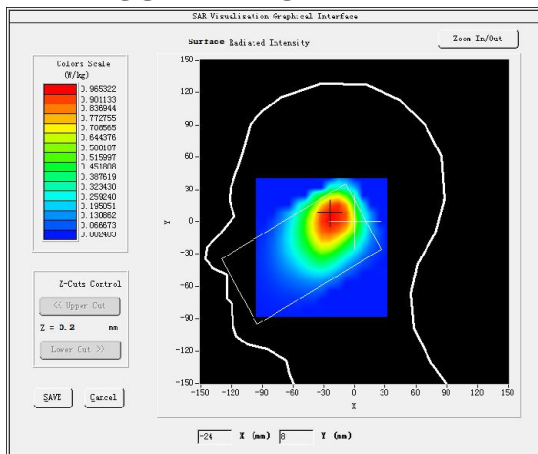
MEASUREMENT 2

Low Band SAR (Channel 4182):

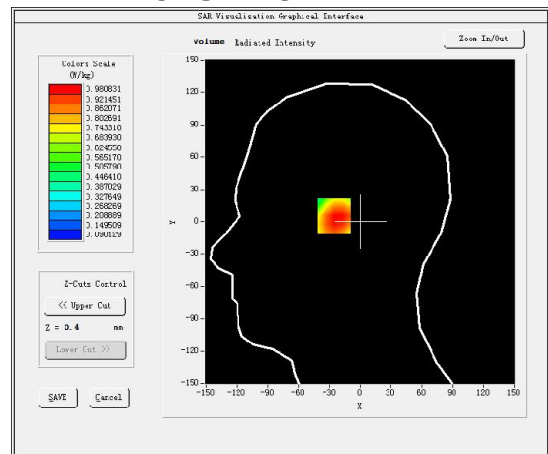
Date: 13/04/2016

Frequency (MHz)	836.400024
Relative permittivity (real part)	39.076721
Relative permittivity (imaginary part)	12.607061
Conductivity (S/m)	1.337609
Variation (%)	1.150000
Crest Factor:	1.0
Probe Conversion factor	5.05
E-Field Probe:	SSE5 (SN 07/15 EP248)
Area Scan	<u>dx=8mm dy=8mm, h= 5.00 mm</u>
ZoomScan	<u>5x5x7, dx=8mm dy=8mm</u> <u>dz=5mm, Complete/ndx=8mm dy=8mm, h=</u> <u>5.00 mm</u>
Phantom	<u>Left head</u>
Device Position	<u>Cheek</u>
Band	<u>BAND5_WCDMA850</u>

SURFACE SAR



VOLUME SAR



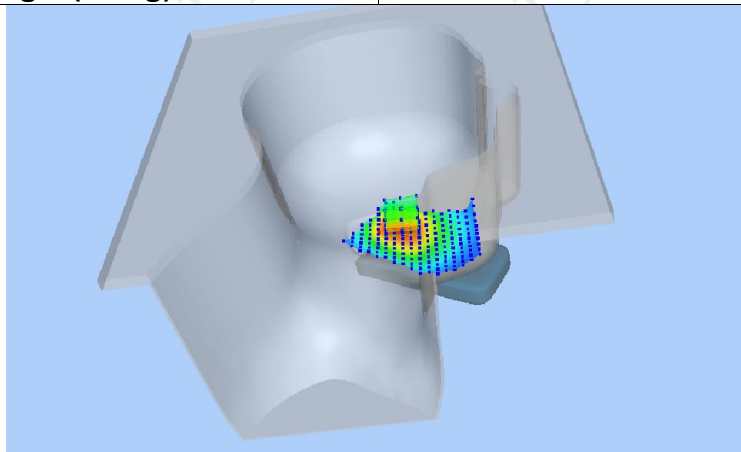
Maximum location: X=-24.00, Y=6.00 SAR Peak: 1.41 W/kg

SAR 10g (W/Kg)

0.632781

SAR 1g (W/Kg)

0.845662



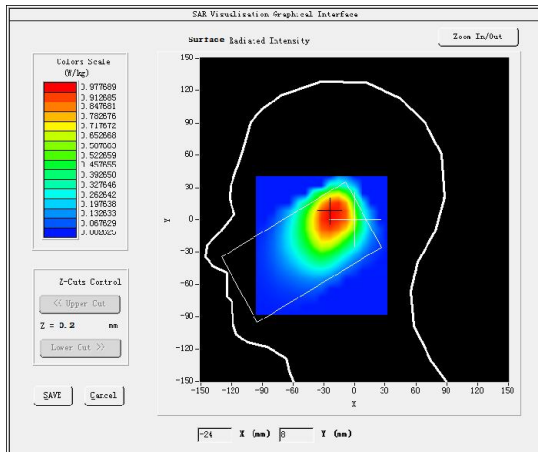
MEASUREMENT 3

Low Band SAR (Channel 4233):

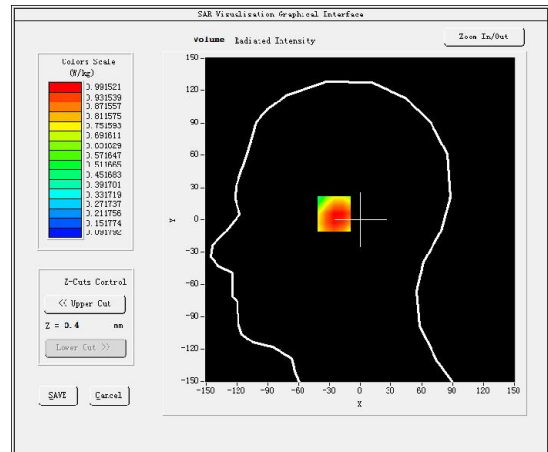
Date: 13/04/2016

Frequency (MHz)	846.599976
Relative permittivity (real part)	39.076721
Relative permittivity (imaginary part)	12.607061
Conductivity (S/m)	1.337609
Variation (%)	1.170000
Crest Factor:	1.0
Probe Conversion factor	5.05
E-Field Probe:	SSE5 (SN 07/15 EP248)
Area Scan	<u>dx=8mm dy=8mm, h= 5.00 mm</u>
ZoomScan	<u>5x5x7, dx=8mm dy=8mm</u> <u>dz=5mm, Complete/ndx=8mm dy=8mm, h=</u> <u>5.00 mm</u>
Phantom	<u>Left head</u>
Device Position	<u>Cheek</u>
Band	<u>BAND5_WCDMA850</u>

SURFACE SAR



VOLUME SAR



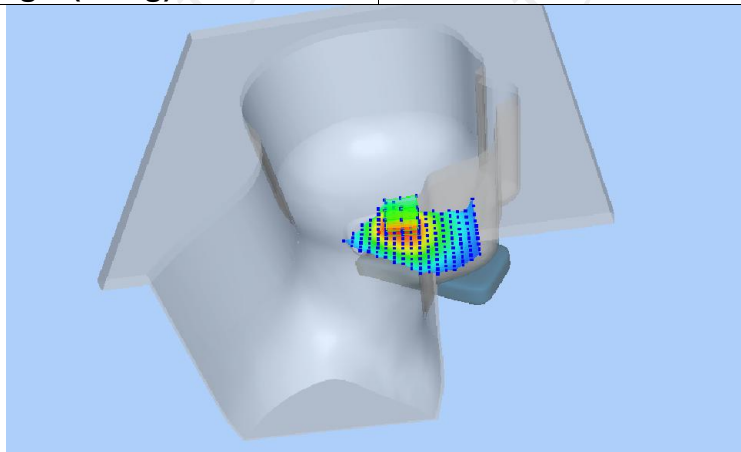
Maximum location: X=-24.00, Y=6.00 SAR Peak: 1.41 W/kg

SAR 10g (W/Kg)

0.639229

SAR 1g (W/Kg)

0.905001



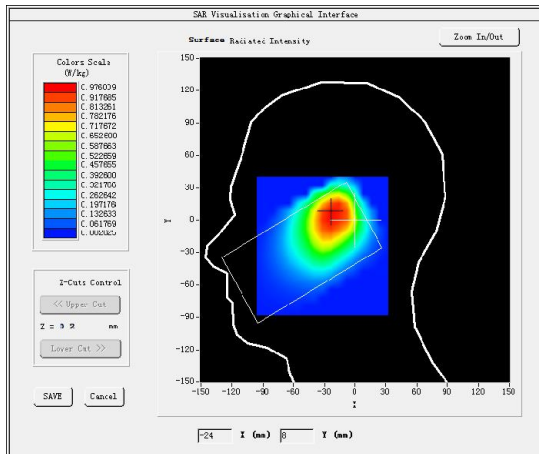
MEASUREMENT 4

Low Band SAR (Channel 4233):

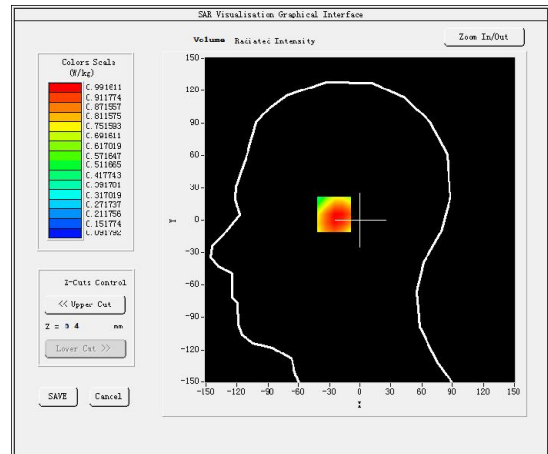
Date: 13/04/2016

Frequency (MHz)	846.599976
Relative permittivity (real part)	39.076721
Relative permittivity (imaginary part)	12.607061
Conductivity (S/m)	1.337609
Variation (%)	-2.690000
Crest Factor:	1.0
Probe Conversion factor	5.05
E-Field Probe:	SSE5 (SN 07/15 EP248)
Area Scan	<u>dx=8mm dy=8mm, h= 5.00 mm</u>
ZoomScan	<u>5x5x7, dx=8mm dy=8mm</u> <u>dz=5mm, Complete/ndx=8mm dy=8mm, h=</u> <u>5.00 mm</u>
Phantom	<u>Left head(Repeated)</u>
Device Position	<u>Cheek</u>
Band	<u>BAND5_WCDMA850</u>

SURFACE SAR



VOLUME SAR



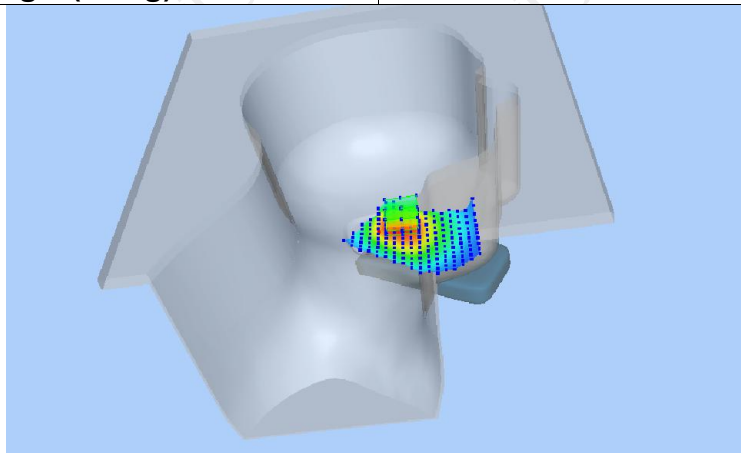
Maximum location: X=-24.00, Y=6.00 SAR Peak: 1.39W/kg

SAR 10g (W/Kg)

0.621264

SAR 1g (W/Kg)

0.885698



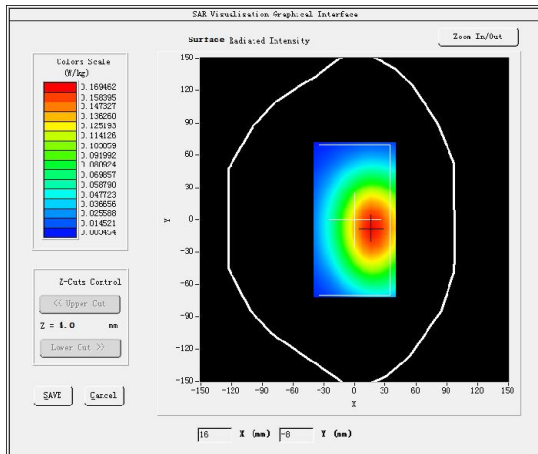
MEASUREMENT 5

Low Band SAR (Channel 4233):

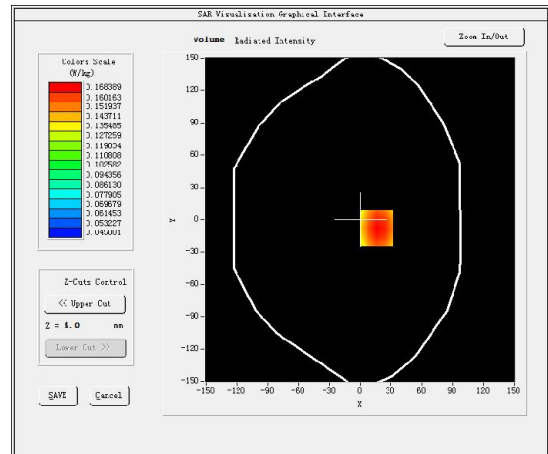
Date: 13/04/2016

Frequency (MHz)	846.599976
Relative permittivity (real part)	53.299999
Relative permittivity (imaginary part)	14.329440
Conductivity (S/m)	1.520354
Variation (%)	0.280000
Crest Factor:	1.0
Probe Conversion factor	5.22
E-Field Probe:	SSE5 (SN 07/15 EP248)
Area Scan	<u>dx=8mm dy=8mm, h= 5.00 mm</u>
ZoomScan	<u>5x5x7, dx=8mm dy=8mm</u> <u>dz=5mm, Complete/ndx=8mm dy=8mm, h=</u> <u>5.00 mm</u>
Phantom	<u>Validation plane</u>
Device Position	<u>Body back</u>
Band	<u>BAND5_WCDMA850</u>

SURFACE SAR



VOLUME SAR



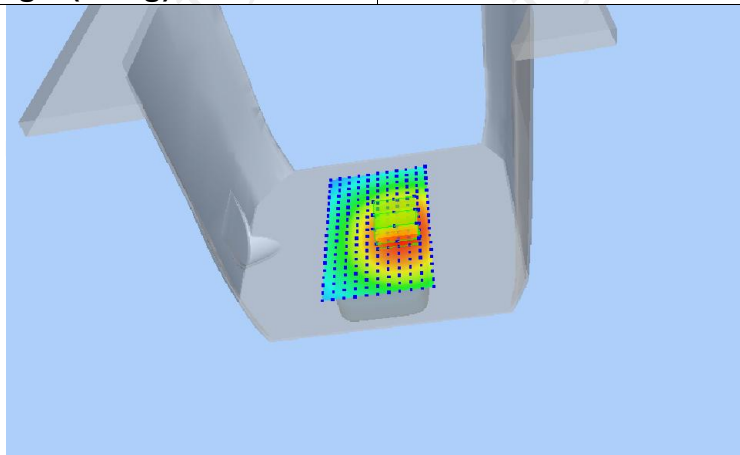
Maximum location: X=16.00, Y=-8.00 SAR Peak: 0.21 W/kg

SAR 10g (W/Kg)

0.122298

SAR 1g (W/Kg)

0.163848



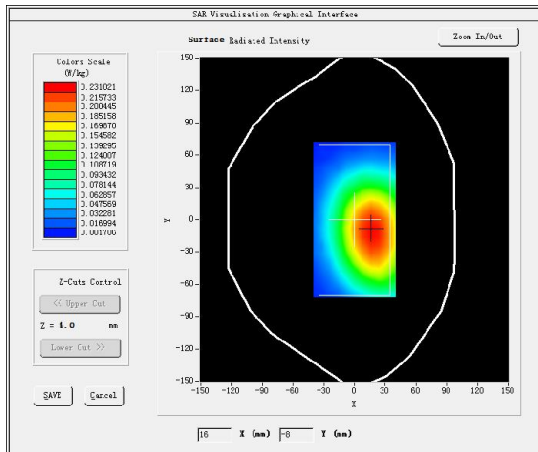
MEASUREMENT 6

Low Band SAR (Channel 4233):

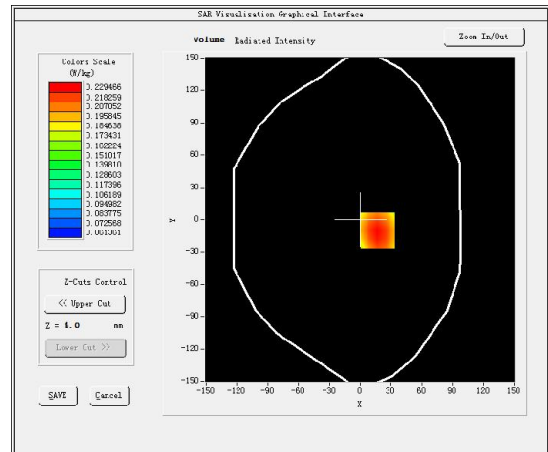
Date: 13/04/2016

Frequency (MHz)	846.599976
Relative permittivity (real part)	53.299999
Relative permittivity (imaginary part)	14.329440
Conductivity (S/m)	1.520354
Variation (%)	-1.930000
Crest Factor:	1.0
Probe Conversion factor	5.22
E-Field Probe:	SSE5 (SN 07/15 EP248)
Area Scan	<u>dx=8mm dy=8mm, h= 5.00 mm</u>
ZoomScan	<u>5x5x7, dx=8mm dy=8mm</u> <u>dz=5mm, Complete/ndx=8mm dy=8mm, h=</u> <u>5.00 mm</u>
Phantom	<u>Validation plane</u>
Device Position	<u>Body back(hotspot)</u>
Band	<u>BAND5_WCDMA850</u>

SURFACE SAR



VOLUME SAR



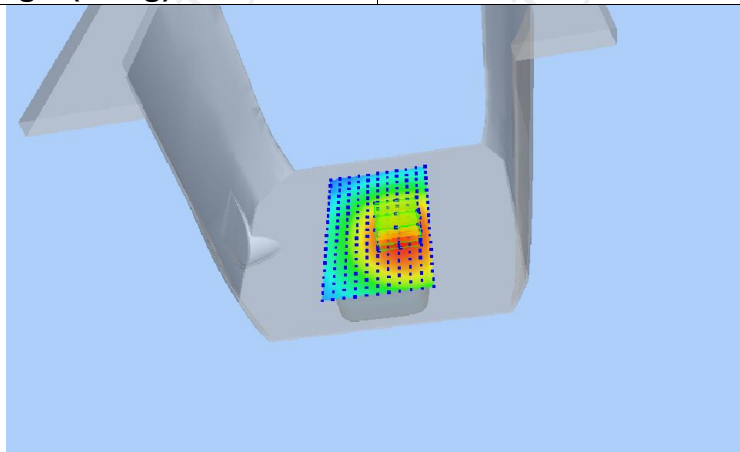
Maximum location: X=17.00, Y=-10.00 SAR Peak: 0.28 W/kg

SAR 10g (W/Kg)

0.167109

SAR 1g (W/Kg)

0.223059



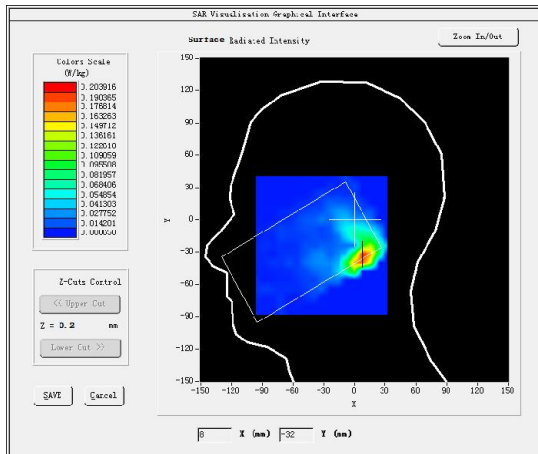
WLAN 2.4
MEASUREMENT 1

Middle Band SAR (Channel 1):

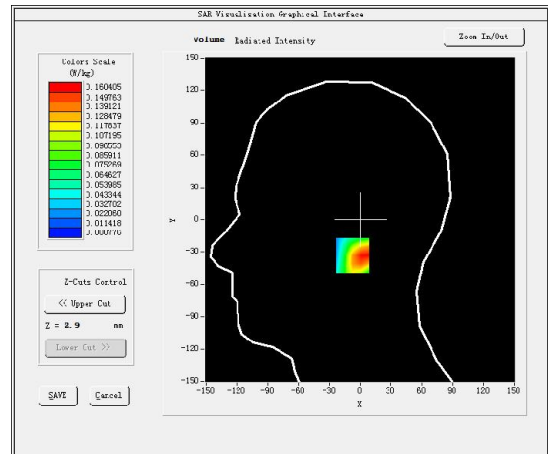
Date: 15/04/2016

Frequency (MHz)	2412.000000
Relative permittivity (real part)	37.801000
Relative permittivity (imaginary part)	13.477700
Conductivity (S/m)	1.834465
Variation (%)	-1.800000
Crest Factor	1.0
Probe Conversion factor	4.21
E-Field Probe:	SSE5 (SN 07/15 EP248)
Area Scan	<u>dx=8mm dy=8mm, h= 5.00 mm</u>
ZoomScan	<u>5x5x7, dx=8mm dy=8mm</u> <u>dz=5mm, Complete/ndx=8mm dy=8mm, h=</u> <u>5.00 mm</u>
Phantom	Validation plane
Device Position	<u>Left head</u>
Band	<u>IEEE 802.11g ISM</u>

SURFACE SAR



VOLUME SAR



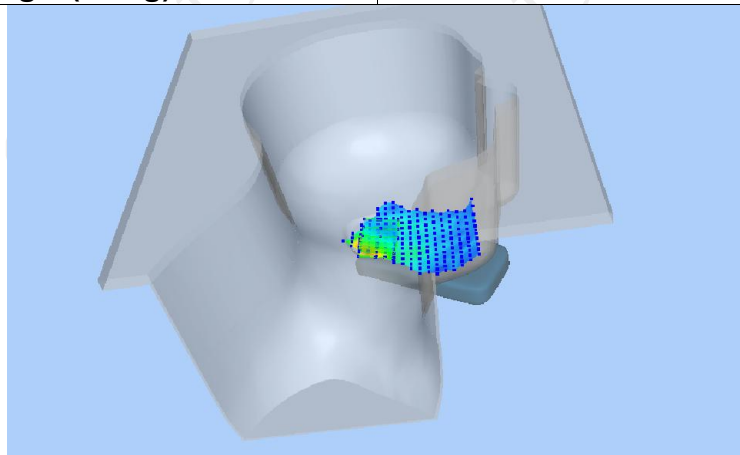
Maximum location: X=1.00, Y=-33.00 SAR Peak: 0.29 W/kg

SAR 10g (W/Kg)

0.077246

SAR 1g (W/Kg)

0.158416



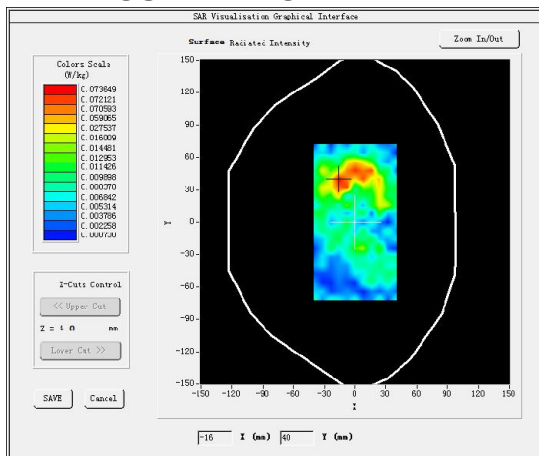
MEASUREMENT 2

Middle Band SAR (Channel 1):

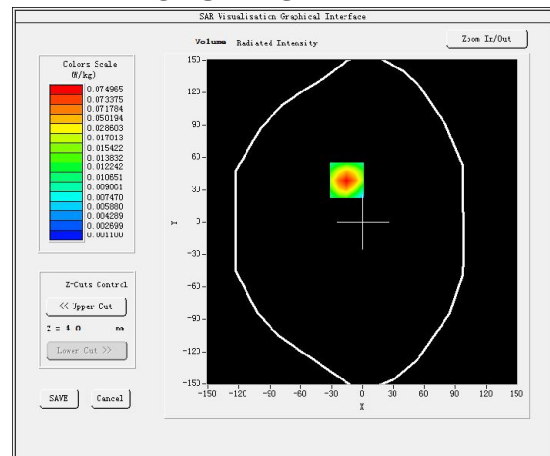
Date: 15/04/2016

Frequency (MHz)	2412.000000
Relative permittivity (real part)	54.616199
Relative permittivity (imaginary part)	14.930150
Conductivity (S/m)	2.012159
Variation (%)	-1.570000
Crest Factor	1.0
Probe Conversion factor	4.36
E-Field Probe:	SSE5 (SN 07/15 EP248)
Area Scan	<u>dx=8mm dy=8mm, h= 5.00 mm</u>
ZoomScan	<u>5x5x7, dx=8mm dy=8mm</u> <u>dz=5mm, Complete/ndx=8mm dy=8mm, h=</u> <u>5.00 mm</u>
Phantom	Validation plane
Device Position	Body back
Band	<u>IEEE 802.11g ISM</u>

SURFACE SAR



VOLUME SAR



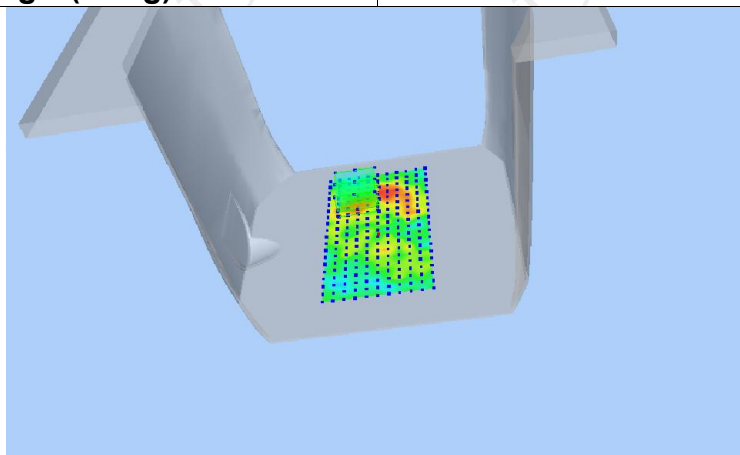
Maximum location: X=-15.00, Y=39.00 SAR Peak: 0.10 W/kg

SAR 10g (W/Kg)

0.050404

SAR 1g (W/Kg)

0.074693



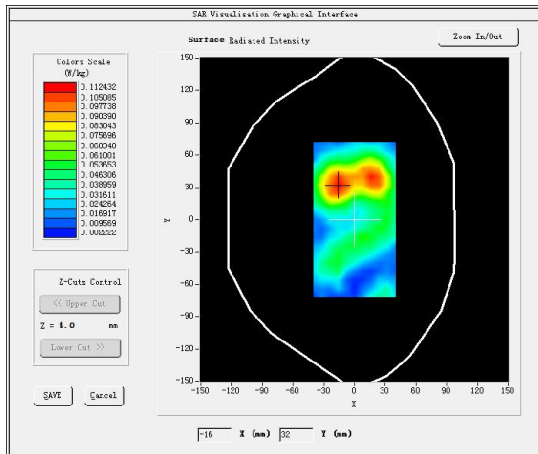
MEASUREMENT 3

Middle Band SAR (Channel 1):

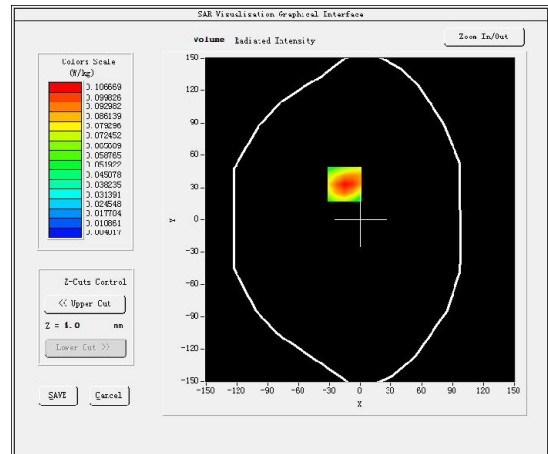
Date: 15/04/2016

Frequency (MHz)	2412.000000
Relative permittivity (real part)	54.616199
Relative permittivity (imaginary part)	14.930150
Conductivity (S/m)	2.012159
Variation (%)	-2.600000
Crest Factor	1.0
Probe Conversion factor	4.36
E-Field Probe:	SSE5 (SN 07/15 EP248)
Area Scan	<u>dx=8mm dy=8mm, h= 5.00 mm</u>
ZoomScan	<u>5x5x7, dx=8mm dy=8mm</u> <u>dz=5mm, Complete/ndx=8mm dy=8mm, h=</u> <u>5.00 mm</u>
Phantom	Validation plane
Device Position	Body back(hotspot)
Band	<u>IEEE 802.11g ISM</u>

SURFACE SAR



VOLUME SAR



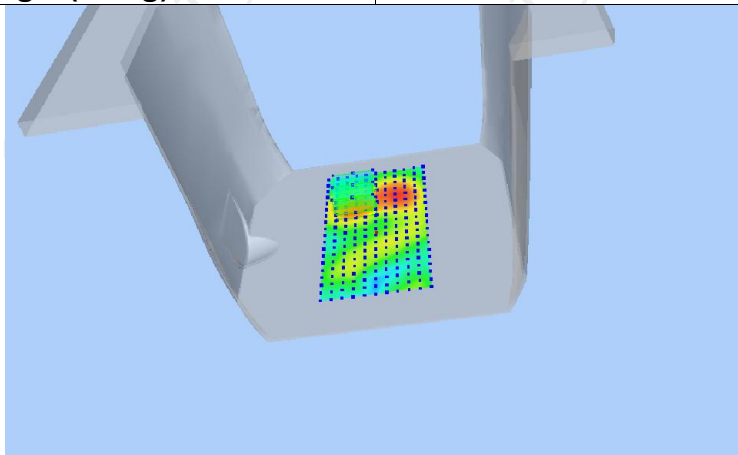
Maximum location: X=-15.00, Y=33.00 SAR Peak: 0.15 W/kg

SAR 10g (W/Kg)

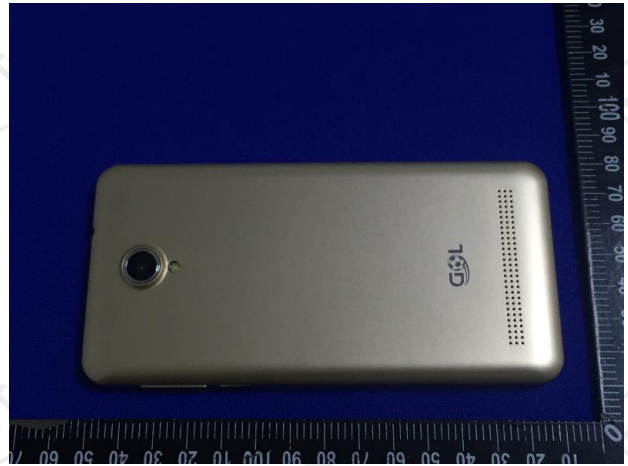
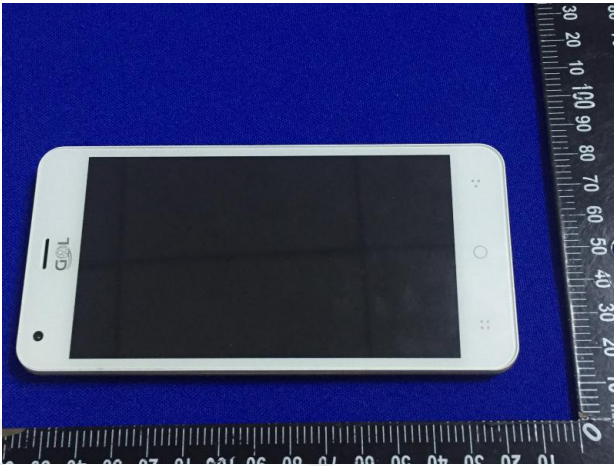
0.057759

SAR 1g (W/Kg)

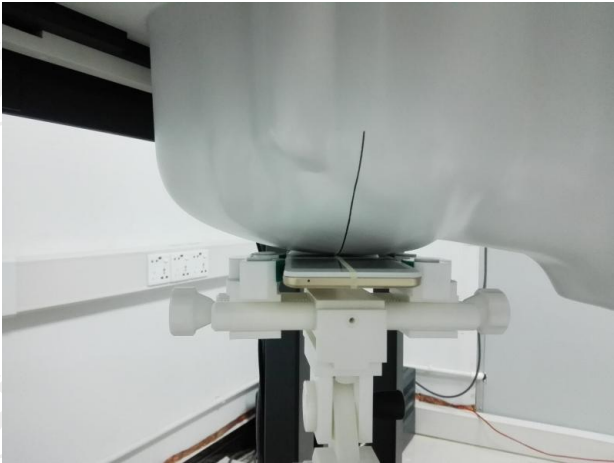
0.100291



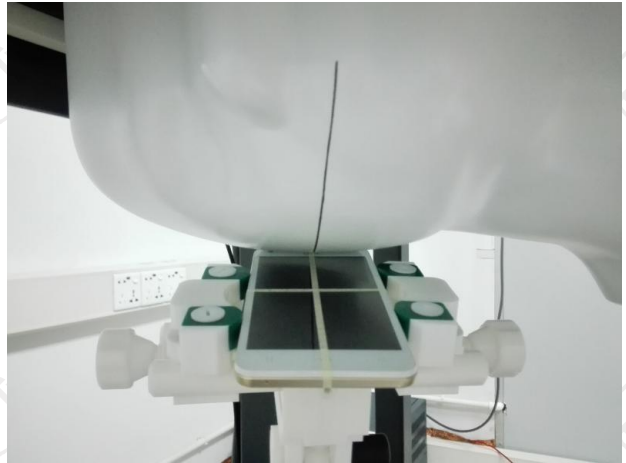
Appendix A:EUT Photos



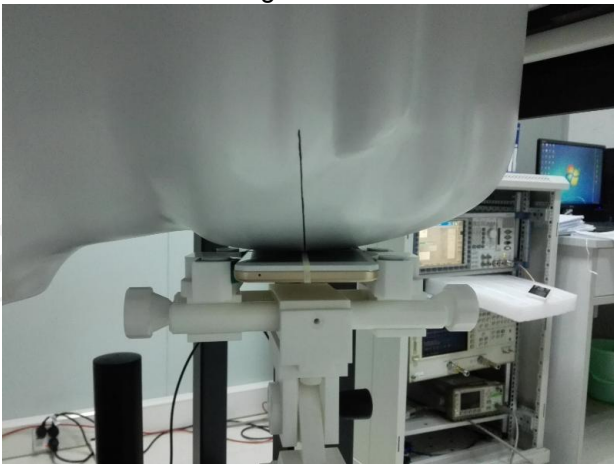
Appendix B: Test Setup Photos



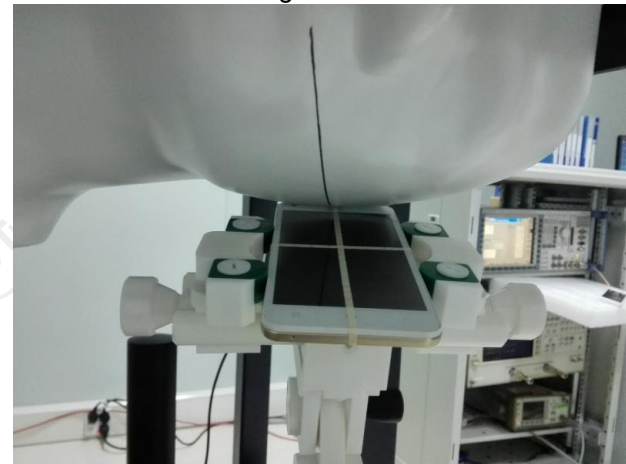
Right Cheek



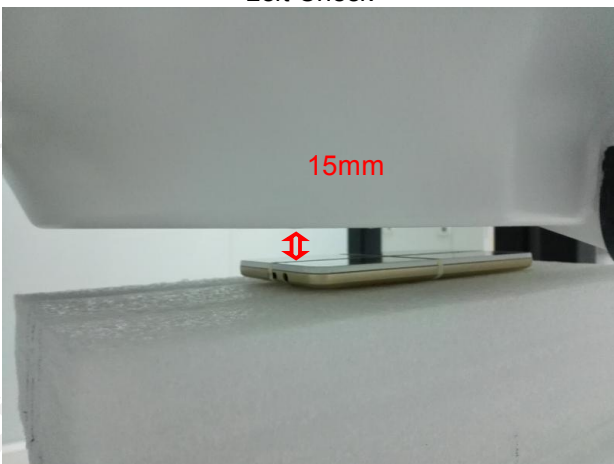
Right Tilted



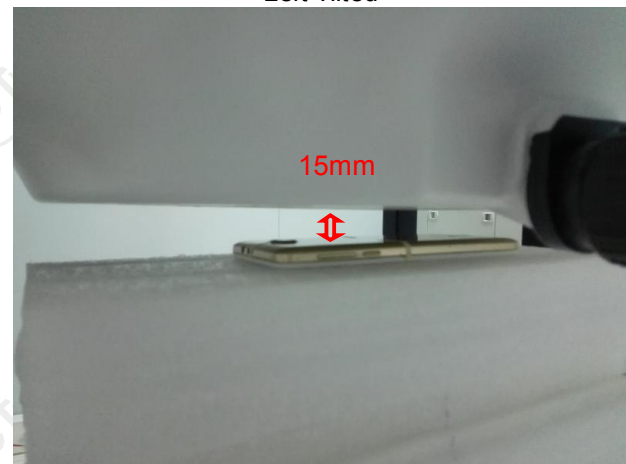
Left Cheek



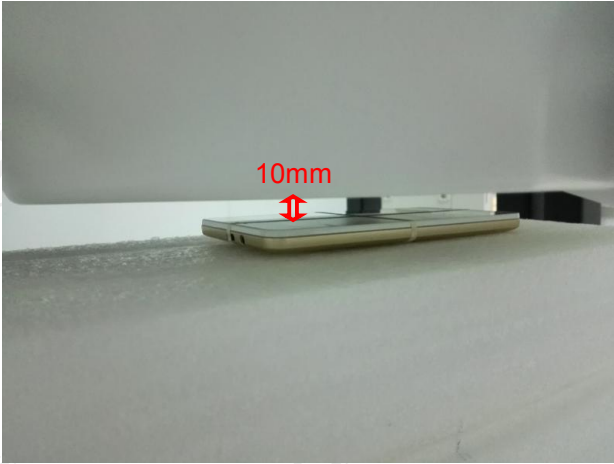
Left Tilted



Body worn – Front(15 mm)



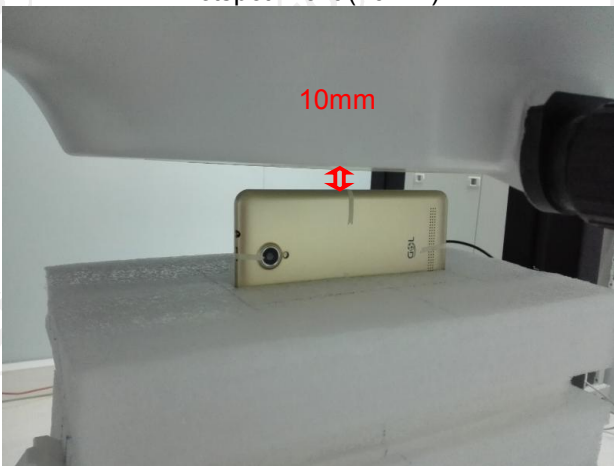
Body worn – Back(15 mm)



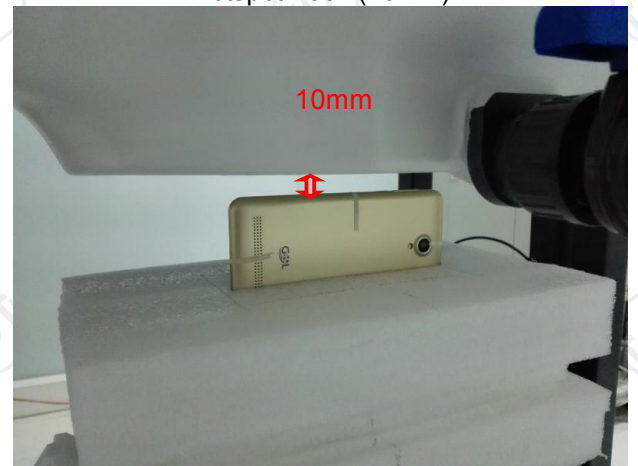
Hotspot Front (10mm)



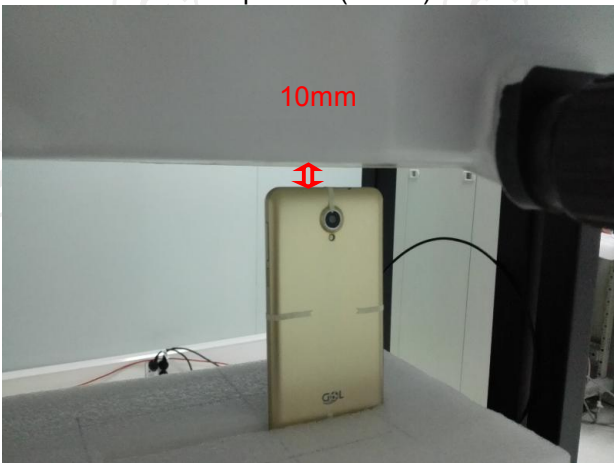
Hotspot Back (10mm)



Hotspot Left (10mm)



Hotspot Right (10mm)



Hotspot Top (10mm)

Liquid depth



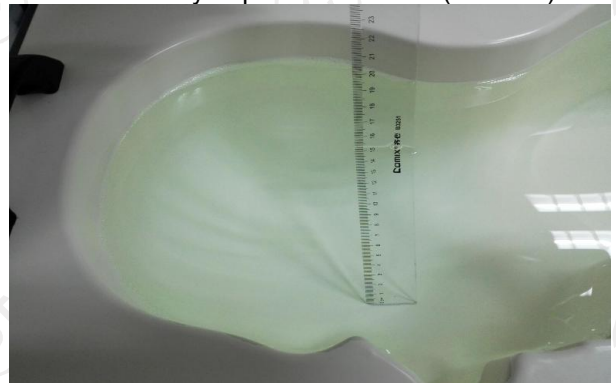
The Body Liquid of 835MHz (15.4cm)



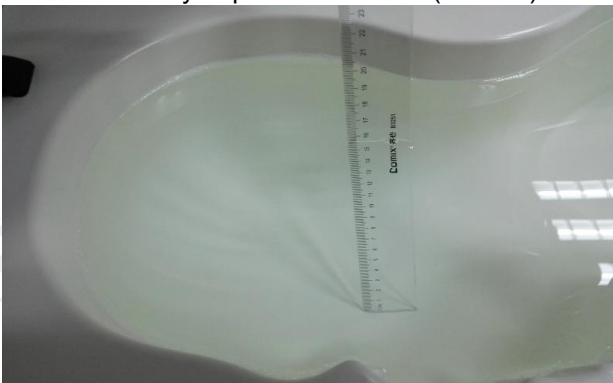
The Body Liquid of 1900MHz (15.9 cm)



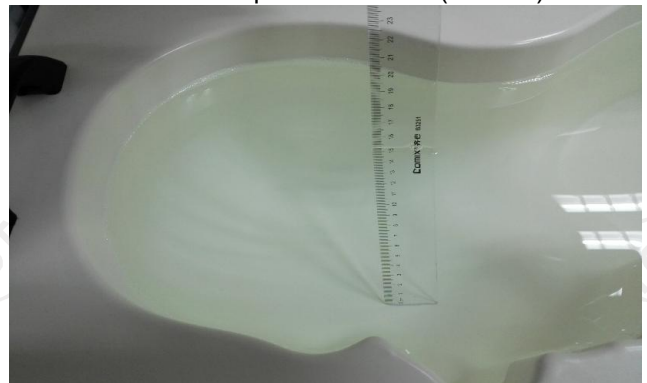
The Body Liquid of 2450MHz (15.3cm)



The Head Liquid of 835MHz (15.2cm)



The Head Liquid of 1900MHz (15.5cm)



The Head Liquid of 2450MHz (15.3cm)