

TABLE 1 - MANUFACTURING CODE

**MECH CODE 01924**

TABLE 2 - PRODUCTION LOCATION

PRODUCTION LOCATION	COUNTRY OF MANUFACTURE
AGUASCALIENTES	MEXICO
ANTRIM	UK

TABLE 3 - PRODUCT MARKINGS

ITEM	DESCRIPTION	VALUE	FORM	SIZE REQUIRED
01	TESLA PART NUMBER	1819592-00-A	LASER	LEGIBLE
02	SENSATA PART NUMBER	70503117292	LASER	LEGIBLE
03	TESLA SYMBOL	N/A	LASER	LEGIBLE
04	PRODUCTION LOCATION	MADE IN XXXXXX	LASER	LEGIBLE
05	BLUETOOTH SYMBOL	N/A	LASER	LEGIBLE
06	MAC ADDRESS (HEXADECIMAL)	ASIC ID: XXXXXXXXXXXX	LASER	LEGIBLE
07	FREQUENCY	2.4GHZ	LASER	LEGIBLE
08	DATE OF MANUFACTURE	YYMMDD	LASER	LEGIBLE
09	2D DATA MATRIX (SENSATA)	N/A	LASER	5MM x 5MM
10	2D DATA MATRIX (SENSATA)	N/A	LASER	10MM x 3MM
11	2D DATA MATRIX (TESLA)	TESLA DATA STRING	LASER	10MM x 10MM
12	TESLA DATA STRING	SEE TABLE 5	LASER	LEGIBLE

TABLE 4 - COUNTRY APPROVALS

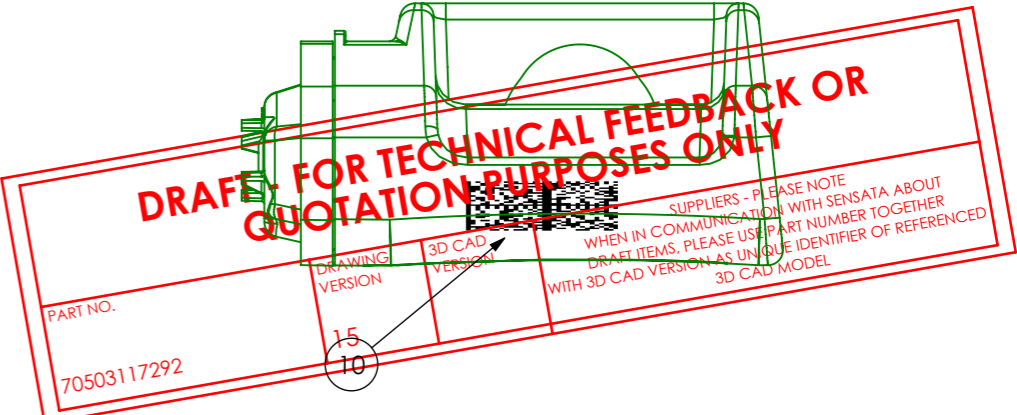
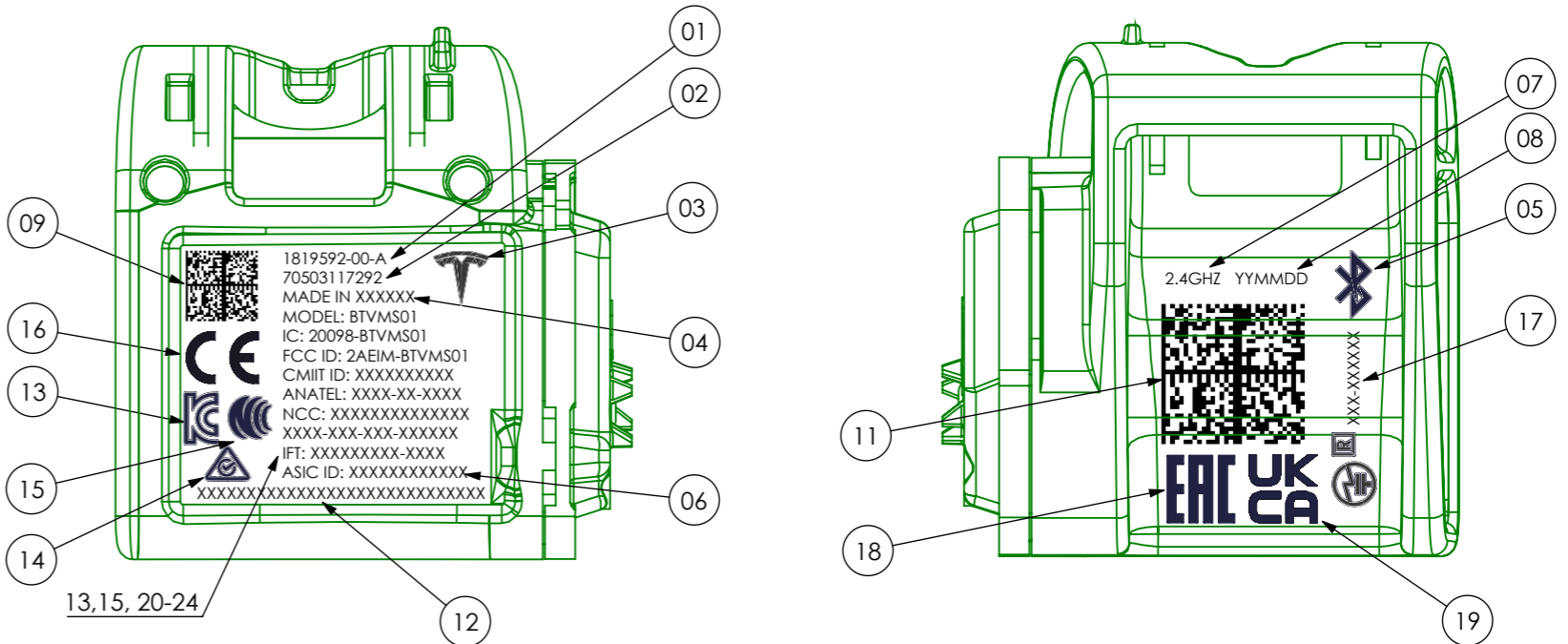
ITEM	REGION	AUTHORITY	FREQUENCY (GHz)	REF CODE/TEXT [TEXT FONT: DIN1451]	REQ ON SENSOR	SIZE REQUIRED
13	KOREAN	KCC	2.4	XXXX-XXX-XXX-XXXXXX	TEXT & SYMBOL	LEGIBLE
14	AUSTRALIA	ACMA	2.4	-	SYMBOL	3MM HIGH
15	TAIWAN	NCC	2.4	NCC: XXXXXXXXXXXXXXX	TEXT & SYMBOL	LEGIBLE
16	EUROPE	R&TTE	2.4	-	CE SYMBOL	4MM HIGH
17	JAPAN	MIC	2.4	XXX-XXXXXX	TEXT & SYMBOLS	Ø 3MM & LEGIBLE
18	RUSSIA	TR CU	2.4	-	SYMBOL	5MM HIGH
19	UK	UKCA	2.4	-	SYMBOL	5MM HIGH
20	MEXICO	IFT	2.4	IFT: XXXXXXXXXXX-XXXX	TEXT	LEGIBLE
21	USA	FCC	2.4	FCC ID: 2AEIM-BTVMS01	TEXT	LEGIBLE
22	CANADA	IC	2.4	IC: 20098-BTVMS01	TEXT	LEGIBLE
23	BRAZIL	ANATEL	2.4	ANATEL: XXXX-XX-XXXX	TEXT	LEGIBLE
24	CHINA	SRRC	2.4	CMIIT ID: XXXXXXXXXXX	TEXT	LEGIBLE

TABLE 5 - TESLA DATA STRING

DATA	CHARACTERS	VALUE
PART NO.	14	P1819592-00-A:
ORIGIN	4	SXXX WITH XXX BEING AMY FOR AGUAS, GEV FOR ANTRIM
YEAR	2	LAST TWO DIGITS OF YEAR, FOR EXAMPLE, 23 FOR 2023
DAY	3	001 TO 365 (366 FOR LEAP YEAR) WITH 001 BEING 01ST JAN
UNIQUE ID	6	SEQUENTIAL FROM 000001

EXAMPLE TEXT STRING: "P1819592-00-A:SGEV24001000001" WOULD BE THE FIRST PART MADE IN ANTRIM ON 01ST JAN 2024

REV	REVISION DESCRIPTION	BY	ECO	DATE
01	INITIAL RELEASE	M.W.	ECO-529419	27/SEP/2023



FOR REFERENCE ONLY, CHECK LATEST REVISION BEFORE USE. REFER TO PLM FOR CONTROLLED DATA, CHANGE HISTORY AND APPROVALS.		TECHNOLOGY PARK, ANTRIM, UK, BT41 1QS		
MATERIAL	THIS DRAWING IS CONFIDENTIAL AND PROPRIETARY OF SCHRADER ELECTRONICS LIMITED. THE INFORMATION CONTAINED WITHIN IT MAY NOT BE USED, DISCLOSED OR REPRODUCED IN WHOLE OR PART, WITHOUT THE EXPRESSED WRITTEN CONSENT OF SCHRADER ELECTRONICS LIMITED. NO RIGHT IS GRANTED TO DISCLOSE OR USE ANY INFORMATION CONTAINED WITHIN THIS DRAWING. SCHRADER ELECTRONICS LIMITED IS PART OF THE SENSATA TECHNOLOGIES GROUP.	PART NUMBER	<del>70503117292</del>	
MASS (g)		TITLE	TESLA DELTA 2.4GHZ SILVER 70503117292 LASER MARKING DRAWING - DRAFT	
PROJECT NO.		PRJ0014620	SIZE	A3
REVISION SYMBOL		INTERPRET DRAWING PER ASME Y14.5-2009 SEE NOTES FOR GENERAL TOLERANCE	DRAWING NO.	00019624
UNLESS OTHERWISE SPECIFIED DIMENSIONS ARE IN MILLIMETERS	DO NOT SCALE DRAWING	THIRD ANGLE PROJECTION	DRAWING REV.	01
		SCALE 2:1	SOLIDWORKS 2020	SHEET 1 OF 1