

Bluetooth 4.0 Supporting List



IOS 7.1 and up



iPhone 5
iPhone 5C
iPhone 5S
iPhone 6
iPhone 6 plus



Samsung S4
Samsung S5
Samsung note3



Android 4.4 and up



Sony Z1(L39h)
Sony Z2(L50u)



LG G2(D802)
LG Nexus4
LG Nexus5

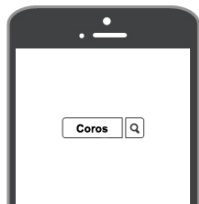
Note: If your phone is not in the list : Android devices support Bluetooth 4.0 and running OS 4.4 and up.

01. Download Coros App

Wristband needs to connect with your phone with App,Please check the Bluetooth supporting list before downloading App.

Search >

Please go to Apple Store or Google Play Store and search "Coros".



02. Active Device and Charge

Connect to USB charger and plug into 5V USB port, Charge until the screen turn on.

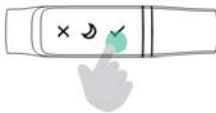
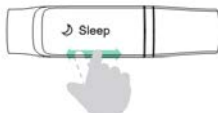


03. TOUCH

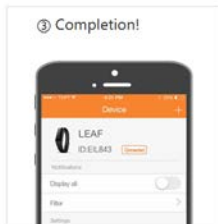
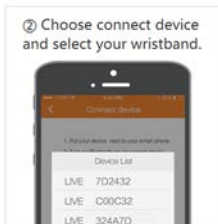
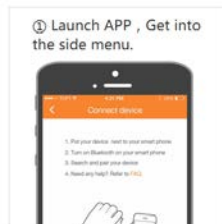
Double click or long press to wake up the wristband

Slide to check the functions

Keep touching the screen to awake wristband



04. Launch App, Pair with your phone



05. Use Now

- **Time display:** Sync with your phone , time will adjust automatically.
- **Health:**Record the information of your daily exercise , you can also check the steps,calorie,distance.
- **Sleep:** Enable sleep option. Wristband will record your sleeping time.
- **Notifications:** Incoming calls, text, twitter, facebook will display on the screen and wristband will vibrate.
- **Anti-Loss:** Wristband will vibrate when your phone is out of standard distance.

Help

■ Why my phone can not find the wristband?

- ① Please make sure the Bluetooth is on and your phone in the "supporting list" .
- ② Make sure the wristband near by your phone (within 10m).
- ③ Check your battery is not empty and if it is not still working. Please contact us.

■ Why phone Bluetooth cannot connect with wristband?

There are some unconventionality problems with few of phone Bluetooth service.
Please restart your phone or Bluetooth and reconnect with it.

FCC Statement:

This equipment has been tested and found to comply with the limits for a Class B digital device, pursuant to Part 15 of the FCC Rules. These limits are designed to provide reasonable protection against harmful interference in a residential installation. This equipment generates uses and can radiate radio frequency energy and, if not installed and used in accordance with the instructions, may cause harmful interference to radio communications. However, there is no guarantee that interference will not occur in a particular installation. If this equipment does cause harmful interference to radio or television reception, which can be determined by turning the equipment off and on, the user is encouraged to try to correct the interference by one or more of the following measures:

- Reorient or relocate the receiving antenna.
- Increase the separation between the equipment and receiver.
- Connect the equipment into an outlet on a circuit different from that to which the receiver is connected.
- Consult the dealer or an experienced radio/TV technician for help.

Changes or modifications not expressly approved by the party responsible for compliance could void the user's authority to operate the equipment.

This device complies with part 15 of the FCC Rules. Operation is subject to the following two conditions: (1) This device may not cause harmful interference, and (2) this device must accept any interference received, including interference that may cause undesired operation.

Hereby, **Coros Wearables Inc.**, declares that this product is in compliance with the essential requirements and other relevant provisions of Directive 1999/5/EC.