



Antenna Connector

SENSeOR

June 2015



In order to comply with 47 CFR Part 15 Subpart C Section 15.203, Sensor worked with a connector supplier in order to develop specific mated connectors to cover this requirement.

Using such connectors in the HTR01-2AW, makes impossible to connect other antennas than the ones provided.

In case of broken antenna, customer can request Sensor for replacement.

Description of specific connectors:

- Outer contact same as SMB connectors
- Center contact exchanged between common male and female SMB connectors.

Id est:

Common SMB connector are based on:

SMB Male → outer contact male + center contact male

SMB femelle → outer contact femelle + center contact femelle

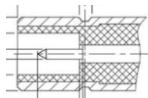
Specific Connectors

Specific Male → outer contact male + center contact femelle

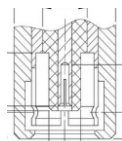
Specific femelle → outer contact femelle + center contact male

See below for illustration

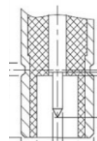
Common SMB connectors



Electronic equipment con

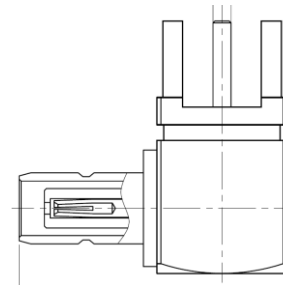


Cable con

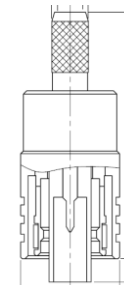


Antenna con

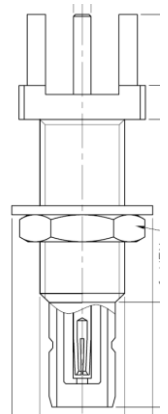
Specific connectors (used on HTR01-2AW)



Electronic equipment con



Cable con



Antenna con