

Front

折線

Size 76x76mm



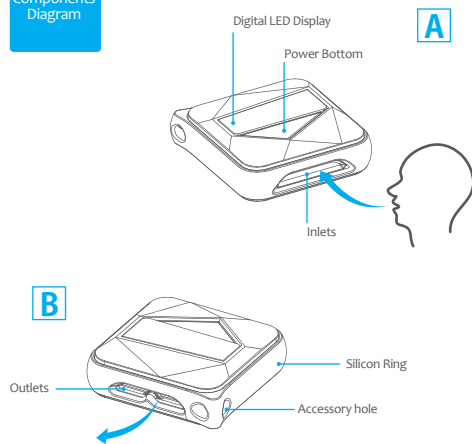
User Instruction Manual



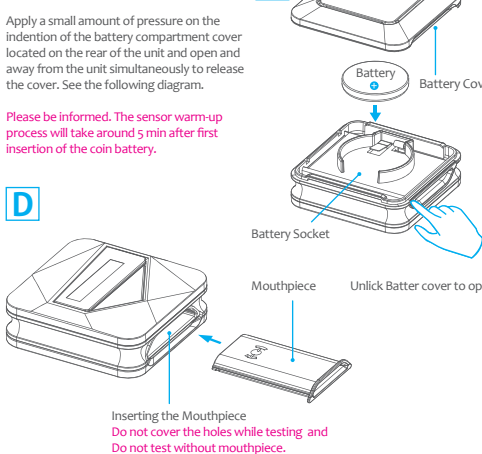
5096-SAT

Components Diagram

Front



Back



Introduction

There are different types of Alcohol Breath Tester available. You can get simple devices meant for home use and professional devices like those used by police for suspected drunk drivers. WearSmith Alcohol Breath Tester is designed for your Personal use, it is a part of accessory in your modern life. It is an easy way to know your breath alcohol concentration in a short time. WearSmith Smartphone application can guide you to take an accurate measurement and analyze your recovery time to zero by linking to the tester via Bluetooth Smart Technology. You can also use it standalone, and it will show the result on the OLED display.

Contents

Alcohol Breath Tester (x1), Mouthpieces (x1), CR2032 Battery (x1), Silicon Rubber Ring (x1), Charm (x1) and User Manual (x1)

IMPORTANT

Please gargle with water before test. This can avoid heavy alcohol concentration remaining in your mouth injures the electrochemical sensor.

To avoid alcohol remains in mouthpiece, remember to wash mouthpiece frequently or blow more fresh-air to clean it whenever you get non-zero result after fresh-air blowing.

Test subjects should wait 20 minutes after eating, drinking, or smoking before blowing into the WearSmith.

DO NOT USE THIS DEVICE AS A TOOL TO DETERMINE WHETHER YOU OR ANYONE ELSE SHOULD OPERATE ANY MOTOR VEHICLE OR MACHINERY.

DO NOT DRINK AND DRIVE. ALWAYS HAVE A DESIGNATED DRIVER WHEN YOU DRINK ALCOHOL.

ONE year LIMITED Warranty

The WearSmith Alcohol Breath Tester provide the product to be free from defects in workmanship or materials which also excluding calibration Under normal use for 12 months from the date to purchase. The WearSmith Alcohol Breath Tester obligation under this warranty is limited to replacing, Adjusting or repairing the unit if returned along with proof of purchase. This product is for personal use, is not recommended to share with others. Due to personal health and hygiene issues, after use do not accept returns. **The Warranty is void if the unit has been tampered with Or maliciously damaged.**

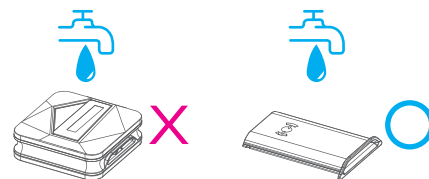
Warnings

Do not blow smoke, saliva or other contaminants into mouthpiece as this may damage the sensor.

Product Maintenance

Clean the Mouthpiece

Cleaning is a normal part of owning and operating a professional level of Alcohol breath tester. WearSmith recommends that you cleaning your mouthpiece at least once a week, depending on the performance you observe and require. If the product is used every day, it may need to be clean the mouthpiece more frequently.



Q&A

Q: How to get a correct test value?

A: Check following tips:

- Please gargle with water before test.
- Test subjects should wait 20 minutes after eating, drinking, or smoking before blowing into the WearSmith. When testing, continuously blow for 5 sec without interruption.
- Blowing strength can be referred to APP pressure bar (if connected with handset APP) for blow-learning.
- When blowing, your lips need close to the mouthpieces.

Q: Why it show WAIT for a long time?

A: WAIT means device sensor is calibrating itself to avoid heavy alcohol concentration remaining in your mouth to injure the electrochemical sensor.

- There are two situations to see WAIT during operation:
- Insert new battery and power-on first time.
 - Once device reports heavy alcohol concentration.

Q: Can I shorten the WAIT time?

A: In case the WAIT is caused by heavy alcohol concentration, you can remove the mouthpiece and blow with fresh air. It can let the alcohol evaporate and sensor can recover faster.

Product Name	WearSmith - Smart Alcohol Tester (BT)
Dimension	38 x 38 x 15 mm
Weight	1991 g
Sensor	Electrochemical Fuel Cell
Unit of Measurement	Can be set to following unit by Smartphone - Breath Alcohol Content in mg/L - Convert Blood Alcohol Content in % - Convert Blood Alcohol Content in ‰
Measurement Range	0 to 1.5 mg/L
Operation temperature range	5 to 40 °C
Operation Humidity Range	0 to 100% RH non-condensing
Battery	DC 3V, Type CR2032 Lithium battery
Battery Life	Up to 1,000 tests, standby time up to 3 months
Display	Monochrome OLED graphics display
Communication	Bluetooth 4.0 Low Energy (Bluetooth Smart)
Smartphone APP	Free APP available for iPhone iOS9 and above, Android 5.0 and above; Android Phone BLE performance depends on Smartphone Types
Warranty	1 year limited warranty Due to personal health and hygiene issues, after use do not accept returns.

FCC ID: 2AEGI-5096-SAT
CCAM16LP1190T2



For more information, please visit
WWW.AIR-MENTOR.COM



AIR MENTOR Technology by
CoAsa Microelectronics Corp.
©2016 All Right Reserved.
Design and Made In Taiwan

NCC Warning Statement

本產品符合低功率電波輻射性電機管理辦法
第十二條 經型式認證合格之低功率射頻電機，非經許可，公司、商號或使用者均不得擅自變更頻率、加大功率或變更設計之特性及功能。
第十四條 低功率射頻電機之使用不得影響飛航安全及干擾合法通信；經發現有干擾現象時，應立即停用，並改善或採取防制措施，直至無干擾為止。前項合法通信，指依電信法規定作業之無線電通信。低功率射頻電機須忍受合法通信或工業、科學及醫療用電波輻射性電機設備之干擾。

Battery Caution:

- Battery may explode or leak causing personal injury, if inserted incorrect type, short-circuited or disposed of in fire.
- Small-sized batteries can easily be swallowed. They must be kept out of the reach of small children.
- Dispose of used batteries according to the instructions.

This device complies with Part 15 of the FCC Rules. Operation is subject to the following two conditions: (1) this device may not cause harmful interference and (2) this device must accept any interference received, including interference that may cause undesired operation.

This equipment has been tested and found to comply with the limits for a Class B digital device, pursuant to part 15 of the FCC rules. These limits are designed to provide reasonable protection against harmful interference in a residential installation. This equipment generates, uses and can radiate radio frequency energy and, if not installed and used in accordance with the instructions, may cause harmful interference to radio communications. However, there is no guarantee that interference will not occur in a particular installation. If this equipment does cause harmful interference to radio or television reception, which can be determined by turning the equipment off and on, the user is encouraged to try to correct the interference by one or more of the following measures: Reorient or relocate the receiving antenna. Increase the separation between the equipment and receiver. Connect the equipment into an outlet on a circuit different from that to which the receiver is connected. Consult the dealer or an experienced radio/TV technician for help.

You are cautioned that changes or modifications not expressly approved by the party responsible for compliance could void your authority to operate the equipment.
FCC RF Radiation Exposure Statement:
This equipment complies with FCC radiation exposure limits set forth for an uncontrolled environment. End users must follow the specific operating instructions for satisfying RF exposure compliance. This transmitter must not be co-located or operating in conjunction with any other antenna or transmitter.

Back

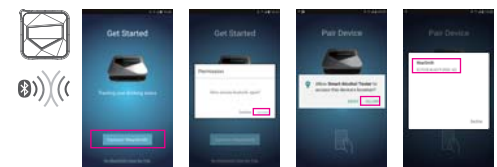
Mobile App

In order to use WearSmith, you will need to download the WearSmith App for your Smartphone. Once you have done this, open the app, pair your device with your smartphone and you are Ready to start using WearSmith.



Setup Process

- Download the WearSmith App from the App store or Google play.
- Go to Settings on your mobile device and make sure Bluetooth is switched on. Pairing takes place within the WearSmith App.
- Press the Power Button on your WearSmith Alcohol Breath Tester, then release, powering it on and allowing it be found. No cords or adapters are needed. Open the app from the home screen and press the "Connect WearSmith" button.



WearSmith Screen Flow

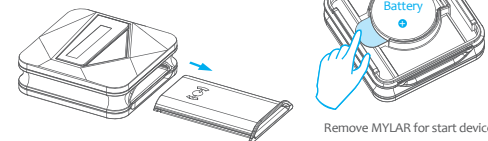


- WearSmith** Battery is installed
- FW version** FW version
- WAIT** Wait sensor warm up
- Ready for testing** Ready for testing
- WAIT** Sensor need release to 100%
- Wait for creating an air current** Wait for creating an air current
- Testing air** Testing air
- Analysis of concentration** Analysis of concentration
- None value icon** None value icon
- Acceptable range icon** Acceptable range icon
- Warning range icon** Warning range icon
- Harmful to health icon** Harmful to health icon
- Over testing range 1.50mg/L** Over testing range 1.50mg/L
- Low battery icon** Low battery icon
- FW upgrade ready icon** FW upgrade ready icon

How to use

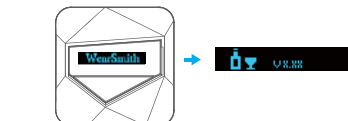
STEP.1

Check the Mouthpiece in slot.



STEP.2

Press the "POWER" button once, if sensor needs to be warm-up first, the screen will show "Wait" process. And after warm-up ready, directly go to STEP.3.




STEP.3

When the screen remains the , press the "power" Button again until "wait" display.

STEP.4

When the screen on your device reads: , blow into the mouthpiece for 5 seconds until all the arrows are illuminated.

STEP.5

The digit sample  will be shown on the display as the device analyzes the sample.

STEP.6

When analysis is complete, the test result will be displayed. Once your WearSmith has analyzed the sample, it will communicate the reading to your mobile device and the WearSmith value will display. The result will be shown for about 20 seconds then the unit will shut itself off automatically. The Unit of measurement can be optional selecting for %, mg/L, ‰ on user smartphone.

Example:

Breath Alcohol Content in mg/L  Blood Alcohol Content in %  Blood Alcohol Content in ‰ 

STEP.7

Error Message 1.
The user had a short exhale time during the test, which likely means the user did not exhale STEADILY AND CONTINUOUSLY FOR AT LEAST 5 SECONDS. Repeat steps 1-5 above to perform another test.

None Value



STEP.8

Error Message 2.
The unit detected a very high alcohol concentration (above 1.50mg/L).

Above 1.50mg/L

STEP.8

WearSmith will turn itself off by a default time out 20 seconds if disconnection. When it connects to Smartphone, it will wait for 30 seconds then turn off.

Starting blow into

