

4790686575 2.4GHz WiFi 802.11b 6CH Front Edge 5mm-ANT0

Measurement Report for Device, EDGE FRONT, WLAN 2.4GHz, UID 10315 AAB, Channel 6 (2437.0MHz)

Device under Test Properties

Model, Manufacturer Device,	Dimensions [mm]	IMEI	DUT Type
	120.0 x 120.0 x 120.0		Phone

Exposure Conditions

Phantom Section, TSL	Position, Test Distance [mm]	Band	Group, UID	Frequency [MHz], Channel Number	Conversion Factor	TSL Conductivity [S/m]	TSL Permittivity
Flat, HSL	EDGE FRONT, 5.00	WLAN 2.4GHz	WLAN, 10315-AAB	2437.0, 6	8.18	1.80	40.1

Hardware Setup

Phantom	TSL, Measured Date	Probe, Calibration Date	DAE, Calibration Date
ELI V8.0 (20deg probe tilt) - 2178	HSL600-10000 Charge: xxxx, 2023-Feb-19	EX3DV4 - SN7733, 2022-08-02	DAE4 Sn1739, 2022-07-29

Scan Setup

	Area Scan	Zoom Scan
Grid Extents [mm]	160.0 x 160.0	30.0 x 30.0 x 30.0
Grid Steps [mm]	10.0 x 10.0	5.0 x 5.0 x 1.5
Sensor Surface [mm]	3.0	1.4
Graded Grid	Yes	Yes
Grading Ratio	1.5	1.5
MAIA	Y	Y
Surface Detection	VMS + 6p	VMS + 6p
Scan Method	Measured	Measured

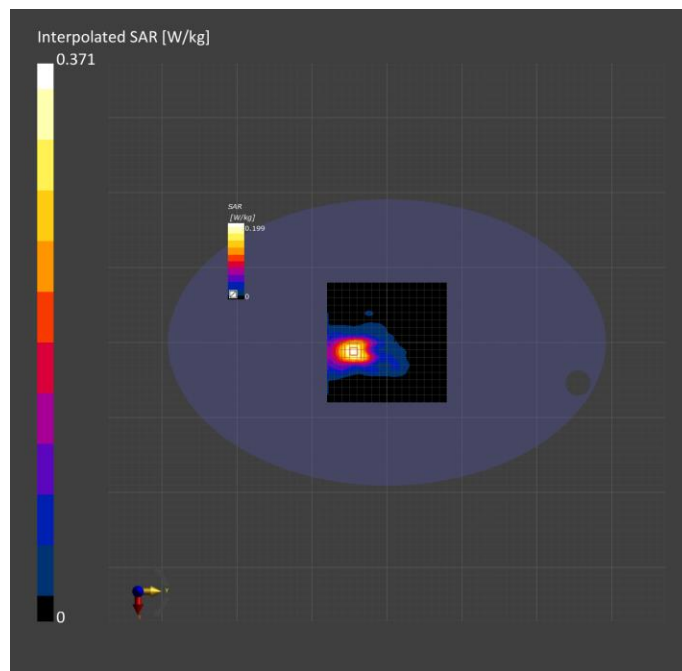
Measurement Results

	Area Scan	Zoom Scan
Date	2023-02-19, 20:18	2023-02-19, 20:26
psSAR1g [W/kg]	0.192	0.180
psSAR10g [W/kg]	0.103	0.092
Power Drift [dB]	0.06	-0.16
Power Scaling	Disabled	Disabled
Scaling Factor [dB]		
TSL Correction	No correction	No correction
M2/M1 [%]		81.1
Dist 3dB Peak [mm]		11.7

Warning(s) / Error(s)

Details	Area Scan	Zoom Scan
---------	-----------	-----------

Warning(s)
Error(s)



4790686575 2.4GHz WiFi 802.11b 6CH Front Edge 5mm-ANT1

Measurement Report for Device, EDGE FRONT, WLAN 2.4GHz, UID 10315 AAB, Channel 6 (2437.0MHz)

Device under Test Properties

Model, Manufacturer Device,	Dimensions [mm]	IMEI	DUT Type
	120.0 x 120.0 x 120.0		Phone

Exposure Conditions

Phantom Section, TSL	Position, Test Distance [mm]	Band	Group, UID	Frequency [MHz], Channel Number	Conversion Factor	TSL Conductivity [S/m]	TSL Permittivity
Flat, HSL	EDGE FRONT, 5.00	WLAN 2.4GHz	WLAN, 10315-AAB	2437.0, 6	8.18	1.80	40.1

Hardware Setup

Phantom	TSL, Measured Date	Probe, Calibration Date	DAE, Calibration Date
ELI V8.0 (20deg probe tilt) - 2178	HSL600-10000 Charge: xxxx, 2023-Feb-19	EX3DV4 - SN7733, 2022-08-02	DAE4 Sn1739, 2022-07-29

Scan Setup

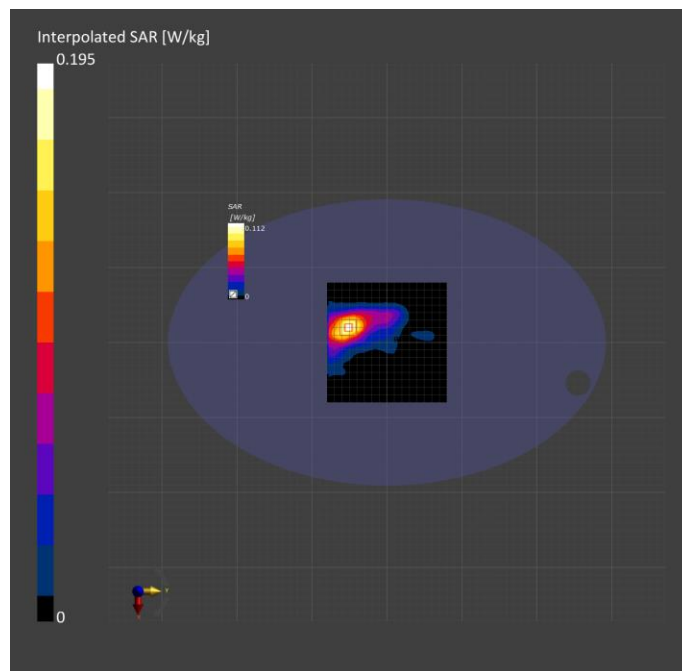
	Area Scan	Zoom Scan
Grid Extents [mm]	160.0 x 160.0	30.0 x 30.0 x 30.0
Grid Steps [mm]	10.0 x 10.0	5.0 x 5.0 x 1.5
Sensor Surface [mm]	3.0	1.4
Graded Grid	Yes	Yes
Grading Ratio	1.5	1.5
MAIA	Y	Y
Surface Detection	VMS + 6p	VMS + 6p
Scan Method	Measured	Measured

Measurement Results

	Area Scan	Zoom Scan
Date	2023-02-19, 10:44	2023-02-19, 10:51
psSAR1g [W/kg]	0.098	0.098
psSAR10g [W/kg]	0.053	0.051
Power Drift [dB]	-0.17	-0.01
Power Scaling	Disabled	Disabled
Scaling Factor [dB]		
TSL Correction	No correction	No correction
M2/M1 [%]		82.3
Dist 3dB Peak [mm]		14.6

Warning(s) / Error(s)

Details	Area Scan	Zoom Scan
Warning(s)		
Error(s)		



4790686575 2.4GHz WiFi 802.11N40 6CH Front Edge 5mm-MIMO

Measurement Report for Device, EDGE FRONT, WLAN 2.4GHz, UID 10401 AAE, Channel 6 (2437.0MHz)

Device under Test Properties

Model, Manufacturer Device,	Dimensions [mm] 120.0 x 120.0 x 120.0	IMEI	DUT Type Phone
--------------------------------	--	------	-------------------

Exposure Conditions

Phantom Section, TSL	Position, Test Distance [mm]	Band	Group, UID	Frequency [MHz], Channel Number	Conversion Factor	TSL Conductivity [S/m]	TSL Permittivity
Flat, HSL	EDGE FRONT, 5.00	WLAN 2.4GHz	WLAN, 10401-AAE	2437.0, 6	8.18	1.80	40.1

Hardware Setup

Phantom	TSL, Measured Date	Probe, Calibration Date	DAE, Calibration Date
ELI V8.0 (20deg probe tilt) - 2178	HSL600-10000 Charge: xxxx, 2023-Feb-19	EX3DV4 - SN7733, 2022-08-02	DAE4 Sn1739, 2022-07-29

Scan Setup

	Area Scan	Zoom Scan
Grid Extents [mm]	160.0 x 160.0	30.0 x 30.0 x 30.0
Grid Steps [mm]	10.0 x 10.0	5.0 x 5.0 x 1.5
Sensor Surface [mm]	3.0	1.4
Graded Grid	Yes	Yes
Grading Ratio	1.5	1.5
MAIA	Y	Y
Surface Detection	VMS + 6p	VMS + 6p
Scan Method	Measured	Measured

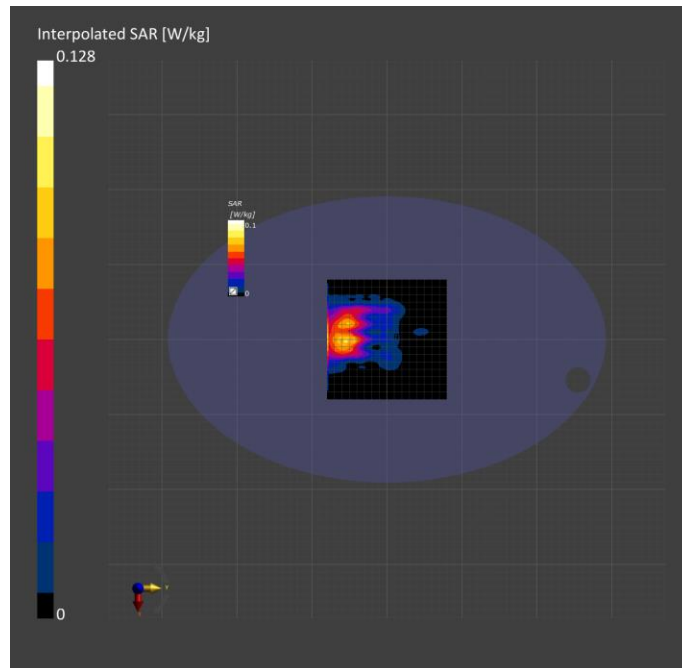
Measurement Results

	Area Scan	Zoom Scan
Date	2023-02-19, 13:35	2023-02-19, 13:43
psSAR1g [W/kg]	0.075	0.066
psSAR10g [W/kg]	0.043	0.036
Power Drift [dB]	-0.01	-0.06
Power Scaling	Disabled	Disabled
Scaling Factor [dB]		
TSL Correction	No correction	No correction
M2/M1 [%]		82.5
Dist 3dB Peak [mm]		17.5

Warning(s) / Error(s)

Details	Area Scan	Zoom Scan
---------	-----------	-----------

Warning(s)
Error(s)



Measurement Report for Device, EDGE TOP, WLAN 2.4GHz, UID 10315 AAB, Channel 6 (2437.0MHz)

Device under Test Properties

Model, Manufacturer Device,	Dimensions [mm]	IMEI	DUT Type
	120.0 x 120.0 x 120.0		Phone

Exposure Conditions

Phantom Section, TSL	Position, Test Distance [mm]	Band	Group, UID	Frequency [MHz], Channel Number	Conversion Factor	TSL Conductivity [S/m]	TSL Permittivity
Flat, HSL	EDGE TOP, 0.00	WLAN 2.4GHz	WLAN, 10315-AAB	2437.0, 6	8.18	1.80	40.1

Hardware Setup

Phantom	TSL, Measured Date	Probe, Calibration Date	DAE, Calibration Date
ELI V8.0 (20deg probe tilt) - 2178	HSL600-10000 Charge: xxxx, 2023-Feb-19	EX3DV4 - SN7733, 2022-08-02	DAE4 Sn1739, 2022-07-29

Scan Setup

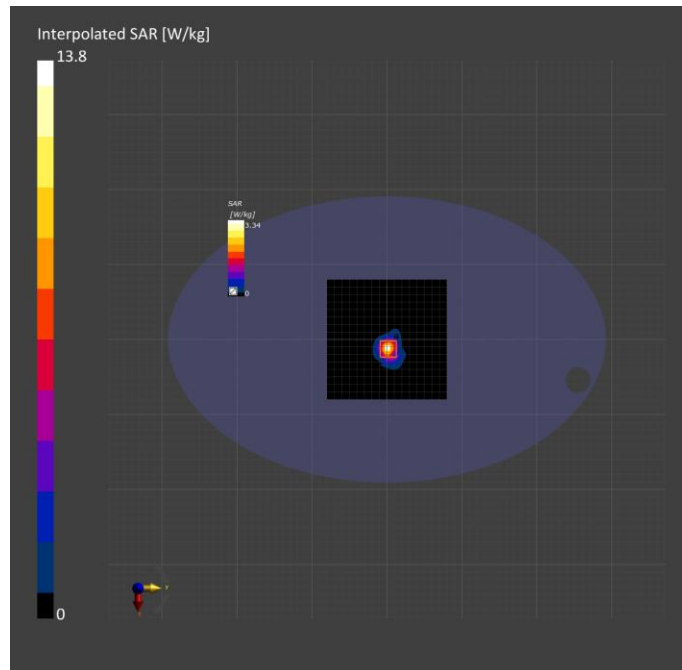
	Area Scan	Zoom Scan
Grid Extents [mm]	160.0 x 160.0	30.0 x 30.0 x 30.0
Grid Steps [mm]	10.0 x 10.0	5.0 x 5.0 x 1.5
Sensor Surface [mm]	3.0	1.4
Graded Grid	Yes	Yes
Grading Ratio	1.5	1.5
MAIA	N/A	N/A
Surface Detection	All points	All points
Scan Method	Measured	Measured

Measurement Results

	Area Scan	Zoom Scan
Date	2023-02-20, 18:55	2023-02-20, 19:09
psSAR1g [W/kg]	4.81	5.10
psSAR10g [W/kg]	1.97	1.94
Power Drift [dB]	0.02	0.08
Power Scaling	Disabled	Disabled
Scaling Factor [dB]		
TSL Correction	No correction	No correction
M2/M1 [%]		72.2
Dist 3dB Peak [mm]		7.8

Warning(s) / Error(s)

Details	Area Scan	Zoom Scan
Warning(s)		
Error(s)		



4790686575 2.4GHz WiFi 802.11b 6CH Top Edge 0mm-ANT1

Measurement Report for Device, EDGE TOP, WLAN 2.4GHz, UID 10315 AAB, Channel 6 (2437.0MHz)

Device under Test Properties

Model, Manufacturer Device,	Dimensions [mm]	IMEI	DUT Type
	120.0 x 120.0 x 120.0		Phone

Exposure Conditions

Phantom Section, TSL	Position, Test Distance [mm]	Band	Group, UID	Frequency [MHz], Channel Number	Conversion Factor	TSL Conductivity [S/m]	TSL Permittivity
Flat, HSL	EDGE TOP, 0.00	WLAN 2.4GHz	WLAN, 10315-AAB	2437.0, 6	8.18	1.80	40.1

Hardware Setup

Phantom	TSL, Measured Date	Probe, Calibration Date	DAE, Calibration Date
ELI V8.0 (20deg probe tilt) - 2178	HSL600-10000 Charge: xxxx, 2023-Feb-19	EX3DV4 - SN7733, 2022-08-02	DAE4 Sn1739, 2022-07-29

Scan Setup

	Area Scan	Zoom Scan
Grid Extents [mm]	160.0 x 160.0	30.0 x 30.0 x 30.0
Grid Steps [mm]	10.0 x 10.0	5.0 x 5.0 x 1.5
Sensor Surface [mm]	3.0	1.4
Graded Grid	Yes	Yes
Grading Ratio	1.5	1.5
MAIA	N/A	N/A
Surface Detection	VMS + 6p	VMS + 6p
Scan Method	Measured	Measured

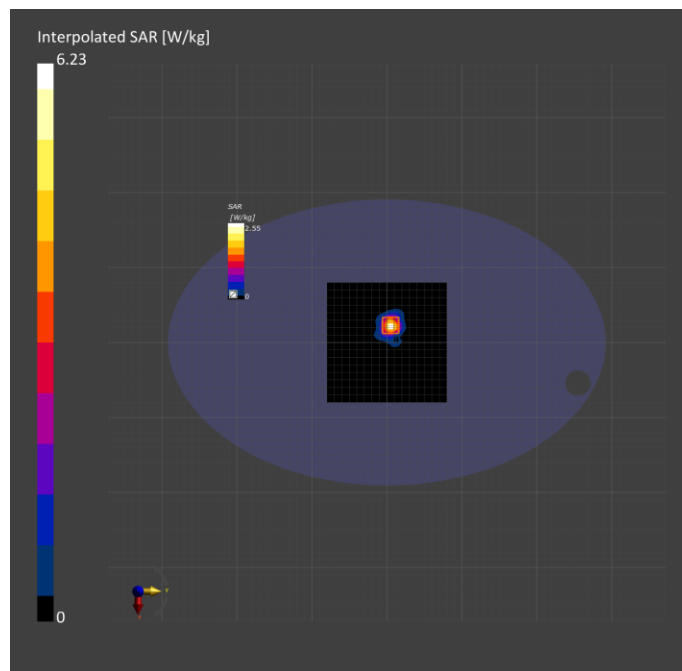
Measurement Results

	Area Scan	Zoom Scan
Date	2023-02-20, 17:09	2023-02-20, 17:17
psSAR1g [W/kg]	2.08	2.26
psSAR10g [W/kg]	0.887	0.835
Power Drift [dB]	-0.04	-0.03
Power Scaling	Disabled	Disabled
Scaling Factor [dB]		
TSL Correction	No correction	No correction
M2/M1 [%]		71.5
Dist 3dB Peak [mm]		7.1

Warning(s) / Error(s)

Details	Area Scan	Zoom Scan
---------	-----------	-----------

Warning(s)
Error(s)



Measurement Report for Device, EDGE TOP, WLAN 2.4GHz, UID 10315 AAB, Channel 6 (2437.0MHz)

Device under Test Properties

Model, Manufacturer Device,	Dimensions [mm]	IMEI	DUT Type
	120.0 x 120.0 x 120.0		Phone

Exposure Conditions

Phantom Section, TSL	Position, Test Distance [mm]	Band	Group, UID	Frequency [MHz], Channel Number	Conversion Factor	TSL Conductivity [S/m]	TSL Permittivity
Flat, HSL	EDGE TOP, 0.00	WLAN 2.4GHz	WLAN, 10401-AAE	2437.0, 6	8.18	1.80	40.1

Hardware Setup

Phantom	TSL, Measured Date	Probe, Calibration Date	DAE, Calibration Date
ELI V8.0 (20deg probe tilt) - 2178	HSL600-10000 Charge: xxxx, 2023-Feb-19	EX3DV4 - SN7733, 2022-08-02	DAE4 Sn1739, 2022-07-29

Scan Setup

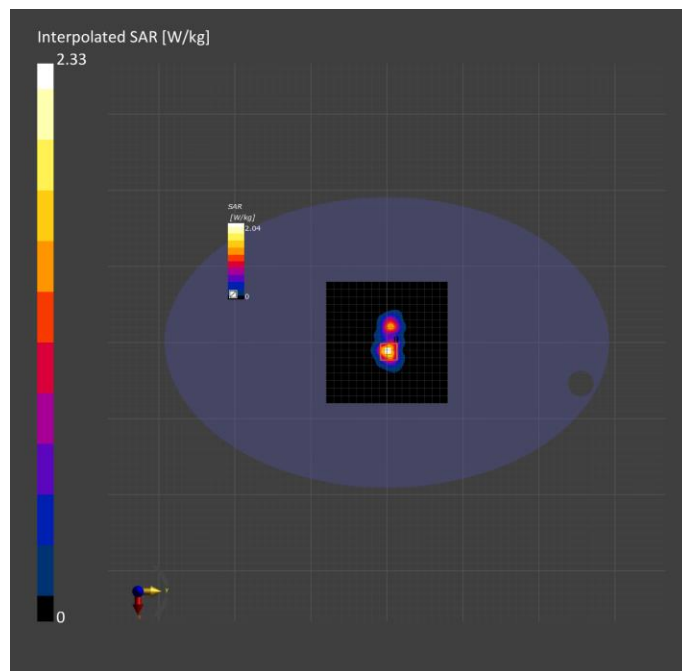
	Area Scan	Zoom Scan
Grid Extents [mm]	160.0 x 160.0	30.0 x 30.0 x 30.0
Grid Steps [mm]	10.0 x 10.0	5.0 x 5.0 x 1.5
Sensor Surface [mm]	3.0	1.4
Graded Grid	Yes	Yes
Grading Ratio	1.5	1.5
MAIA	N/A	N/A
Surface Detection	All points	All points
Scan Method	Measured	Measured

Measurement Results

	Area Scan	Zoom Scan
Date	2023-02-20, 19:15	2023-02-20, 19:29
psSAR1g [W/kg]	1.69	1.81
psSAR10g [W/kg]	0.712	0.694
Power Drift [dB]	0.01	0.05
Power Scaling	Disabled	Disabled
Scaling Factor [dB]		
TSL Correction	No correction	No correction
M2/M1 [%]		71.5
Dist 3dB Peak [mm]		7.1

Warning(s) / Error(s)

Details	Area Scan	Zoom Scan
Warning(s)		
Error(s)		



Measurement Report for Device, EDGE FRONT, WLAN 5GHz, UID 10062 CAE, Channel 36 (5180.000MHz)

Device under Test Properties

Model, Manufacturer Device,	Dimensions [mm]	IMEI	DUT Type
	120.0 x 120.0 x 120.0		Phone

Exposure Conditions

Phantom Section, TSL	Position, Test Distance [mm]	Band	Group, UID	Frequency [MHz], Channel Number	Conversion Factor	TSL Conductivity [S/m]	TSL Permittivity
Flat, HSL	EDGE FRONT, 5.00	WLAN 5GHz	WLAN, 10062-CAE	5180.000, 36	5.57	4.65	36.2

Hardware Setup

Phantom	TSL, Measured Date	Probe, Calibration Date	DAE, Calibration Date
ELI V8.0 (20deg probe tilt) - 2178	HBBL-600-10000 Charge:xxxx, 2024-Jan-04	EX3DV4 - SN7383, 2023-06-05	DAE3 Sn427, 2023-05-17

Scan Setup

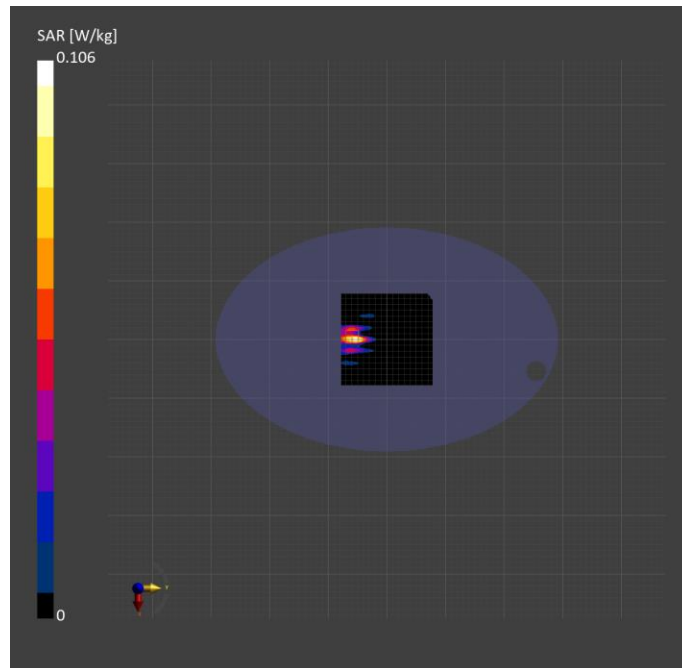
	Area Scan	Zoom Scan
Grid Extents [mm]	160.0 x 160.0	22.0 x 22.0 x 22.0
Grid Steps [mm]	10.0 x 10.0	4.0 x 4.0 x 1.4
Sensor Surface [mm]	3.0	1.4
Graded Grid	N/A	Yes
Grading Ratio	N/A	1.4
MAIA	Y	Y
Surface Detection	VMS + 6p	VMS + 6p
Scan Method	Measured	Measured

Measurement Results

	Area Scan	Zoom Scan
Date	2024-01-04, 09:35	2024-01-04, 09:44
psSAR1g [W/kg]	0.041	0.033
psSAR10g [W/kg]	0.022	0.016
Power Drift [dB]	-0.11	-0.13
Power Scaling	Disabled	Disabled
Scaling Factor [dB]		
TSL Correction	No correction	No correction
M2/M1 [%]		71.0
Dist 3dB Peak [mm]		13.8

Warning(s) / Error(s)

Details	Area Scan	Zoom Scan
Warning(s)		
Error(s)		



4790686575 5.1GHz WiFi 802.11A 36CH Front Edge 5mm-ANT1

Measurement Report for Device, EDGE FRONT, WLAN 5GHz, UID 10062 CAE, Channel 36 (5180.000MHz)

Device under Test Properties

Model, Manufacturer Device,	Dimensions [mm] 120.0 x 120.0 x 120.0	IMEI	DUT Type Phone
--------------------------------	--	------	-------------------

Exposure Conditions

Phantom Section, TSL	Position, Test Distance [mm]	Band	Group, UID	Frequency [MHz], Channel Number	Conversion Factor	TSL Conductivity [S/m]	TSL Permittivity
Flat, HSL	EDGE FRONT, 5.00	WLAN 5GHz	WLAN, 10062-CAE	5180.000, 36	5.57	4.65	36.2

Hardware Setup

Phantom	TSL, Measured Date	Probe, Calibration Date	DAE, Calibration Date
ELI V8.0 (20deg probe tilt) - 2178	HBBL-600-10000 Charge:xxxx, 2024-Jan-04	EX3DV4 - SN7383, 2023-06-05	DAE3 Sn427, 2023-05-17

Scan Setup

	Area Scan	Zoom Scan
Grid Extents [mm]	160.0 x 160.0	22.0 x 22.0 x 22.0
Grid Steps [mm]	10.0 x 10.0	4.0 x 4.0 x 1.4
Sensor Surface [mm]	3.0	1.4
Graded Grid	N/A	Yes
Grading Ratio	N/A	1.4
MAIA	Y	Y
Surface Detection	VMS + 6p	VMS + 6p
Scan Method	Measured	Measured

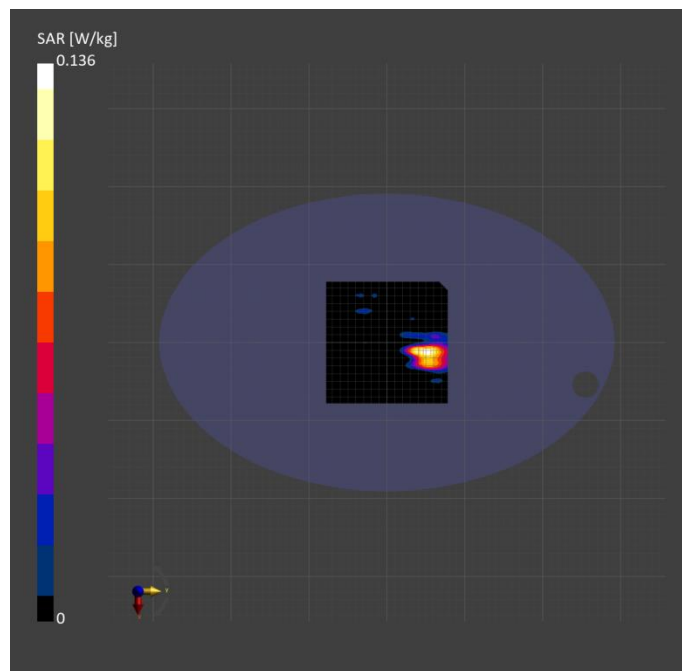
Measurement Results

	Area Scan	Zoom Scan
Date	2024-01-04, 11:01	2024-01-04, 11:11
psSAR1g [W/kg]	0.112	0.106
psSAR10g [W/kg]	0.045	0.034
Power Drift [dB]	-0.08	-0.09
Power Scaling	Disabled	Disabled
Scaling Factor [dB]		
TSL Correction	No correction	No correction
M2/M1 [%]		72.6
Dist 3dB Peak [mm]		9.0

Warning(s) / Error(s)

Details	Area Scan	Zoom Scan
---------	-----------	-----------

Warning(s)
Error(s)



Measurement Report for Device, EDGE FRONT, WLAN 5GHz, UID 10402 AAE, Channel 42 (5210.0MHz)

Device under Test Properties

Model, Manufacturer Device,	Dimensions [mm]	IMEI	DUT Type
	120.0 x 120.0 x 120.0		Phone

Exposure Conditions

Phantom Section, TSL	Position, Test Distance [mm]	Band	Group, UID	Frequency [MHz], Channel Number	Conversion Factor	TSL Conductivity [S/m]	TSL Permittivity
Flat, HSL	EDGE FRONT, 5.00	WLAN 5GHz	WLAN, 10402-AAE	5210.0, 42	5.92	4.64	35.0

Hardware Setup

Phantom	TSL, Measured Date	Probe, Calibration Date	DAE, Calibration Date
ELI V8.0 (20deg probe tilt) - 2178	HSL600-10000 Charge: xxxx, 2023-Feb-21	EX3DV4 - SN7733, 2022-08-02	DAE4 Sn1739, 2022-07-29

Scan Setup

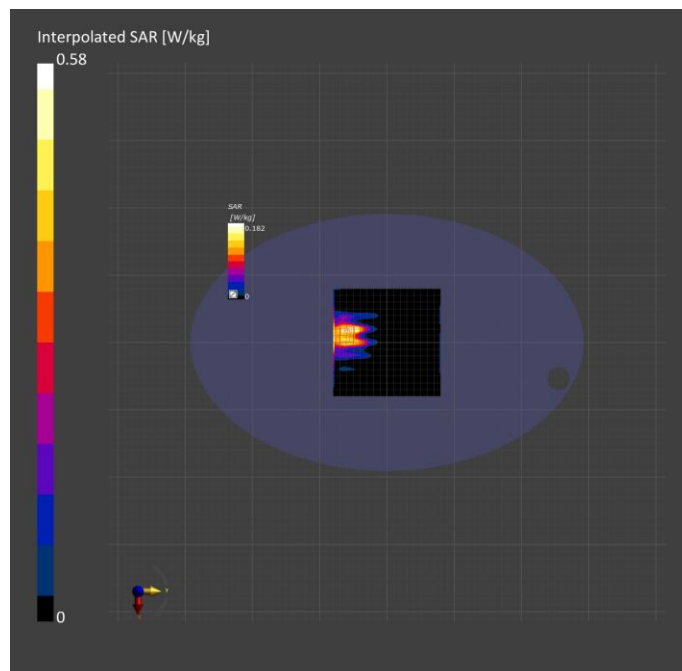
	Area Scan	Zoom Scan
Grid Extents [mm]	160.0 x 160.0	22.0 x 22.0 x 22.0
Grid Steps [mm]	10.0 x 10.0	4.0 x 4.0 x 1.4
Sensor Surface [mm]	3.0	1.4
Graded Grid	Yes	Yes
Grading Ratio	1.5	1.4
MAIA	Y	Y
Surface Detection	VMS + 6p	VMS + 6p
Scan Method	Measured	Measured

Measurement Results

	Area Scan	Zoom Scan
Date	2023-02-21, 21:14	2023-02-21, 21:21
psSAR1g [W/kg]	0.197	0.180
psSAR10g [W/kg]	0.092	0.071
Power Drift [dB]	0.17	-0.20
Power Scaling	Disabled	Disabled
Scaling Factor [dB]		
TSL Correction	No correction	No correction
M2/M1 [%]		69.3
Dist 3dB Peak [mm]		19.3

Warning(s) / Error(s)

Details	Area Scan	Zoom Scan
Warning(s)		
Error(s)		



Measurement Report for Device, EDGE FRONT, WLAN 5GHz, UID 10317 AAD, Channel 165 (5825.0MHz)

Device under Test Properties

Model, Manufacturer Device,	Dimensions [mm]	IMEI	DUT Type
	120.0 x 120.0 x 120.0		Phone

Exposure Conditions

Phantom Section, TSL	Position, Test Distance [mm]	Band	Group, UID	Frequency [MHz], Channel Number	Conversion Factor	TSL Conductivity [S/m]	TSL Permittivity
Flat, HSL	EDGE FRONT, 5.00	WLAN 5GHz	WLAN, 10317-AAD	5825.0, 165	5.15	5.24	35.3

Hardware Setup

Phantom	TSL, Measured Date	Probe, Calibration Date	DAE, Calibration Date
ELI V8.0 (20deg probe tilt) - 2178	HSL600-10000 Charge: xxxx, 2023-Feb-22	EX3DV4 - SN7733, 2022-08-02	DAE4 Sn1739, 2022-07-29

Scan Setup

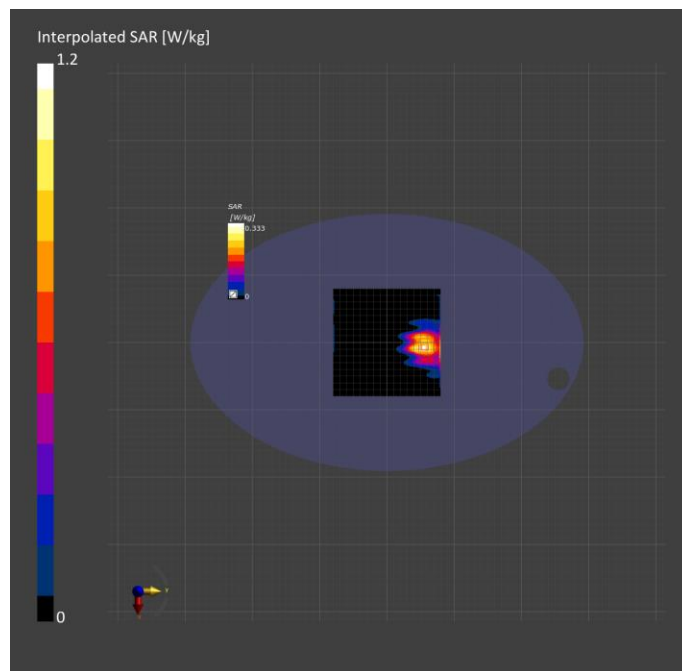
	Area Scan	Zoom Scan
Grid Extents [mm]	160.0 x 160.0	22.0 x 22.0 x 22.0
Grid Steps [mm]	10.0 x 10.0	4.0 x 4.0 x 1.4
Sensor Surface [mm]	3.0	1.4
Graded Grid	Yes	Yes
Grading Ratio	1.5	1.4
MAIA	Y	Y
Surface Detection	VMS + 6p	VMS + 6p
Scan Method	Measured	Measured

Measurement Results

	Area Scan	Zoom Scan
Date	2023-02-22, 15:11	2023-02-22, 15:19
psSAR1g [W/kg]	0.380	0.311
psSAR10g [W/kg]	0.165	0.116
Power Drift [dB]	-0.15	-0.15
Power Scaling	Disabled	Disabled
Scaling Factor [dB]		
TSL Correction	No correction	No correction
M2/M1 [%]		64.1
Dist 3dB Peak [mm]		20.0

Warning(s) / Error(s)

Details	Area Scan	Zoom Scan
Warning(s)		
Error(s)		



Measurement Report for Device, EDGE FRONT, WLAN 5GHz, UID 10317 AAD, Channel 149 (5745.0MHz)

Device under Test Properties

Model, Manufacturer Device,	Dimensions [mm]	IMEI	DUT Type
	120.0 x 120.0 x 120.0		Phone

Exposure Conditions

Phantom Section, TSL	Position, Test Distance [mm]	Band	Group, UID	Frequency [MHz], Channel Number	Conversion Factor	TSL Conductivity [S/m]	TSL Permittivity
Flat, HSL	EDGE FRONT, 5.00	WLAN 5GHz	WLAN, 10317-AAD	5745.0, 149	5.15	5.13	35.5

Hardware Setup

Phantom	TSL, Measured Date	Probe, Calibration Date	DAE, Calibration Date
ELI V8.0 (20deg probe tilt) - 2178	HSL600-10000 Charge: xxxx, 2023-Feb-22	EX3DV4 - SN7733, 2022-08-02	DAE4 Sn1739, 2022-07-29

Scan Setup

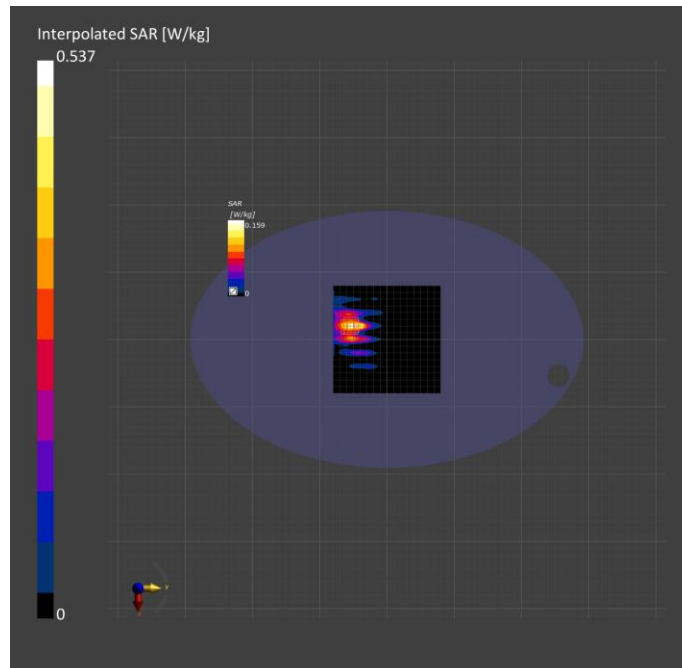
	Area Scan	Zoom Scan
Grid Extents [mm]	160.0 x 160.0	22.0 x 22.0 x 22.0
Grid Steps [mm]	10.0 x 10.0	4.0 x 4.0 x 1.4
Sensor Surface [mm]	3.0	1.4
Graded Grid	Yes	Yes
Grading Ratio	1.5	1.4
MAIA	Y	Y
Surface Detection	VMS + 6p	VMS + 6p
Scan Method	Measured	Measured

Measurement Results

	Area Scan	Zoom Scan
Date	2023-02-22, 18:02	2023-02-22, 18:11
psSAR1g [W/kg]	0.160	0.110
psSAR10g [W/kg]	0.069	0.035
Power Drift [dB]	-0.17	-0.04
Power Scaling	Disabled	Disabled
Scaling Factor [dB]		
TSL Correction	No correction	No correction
M2/M1 [%]		63.2
Dist 3dB Peak [mm]		12.9

Warning(s) / Error(s)

Details	Area Scan	Zoom Scan
Warning(s)		
Error(s)		



4790686575 5.8GHz WiFi 802.11N40 159CH Front Edge 5mm-MIMO

Measurement Report for Device, EDGE FRONT, WLAN 5GHz, UID 10401 AAE, Channel 159 (5795.0MHz)

Device under Test Properties

Model, Manufacturer Device,	Dimensions [mm] 120.0 x 120.0 x 120.0	IMEI	DUT Type Phone
--------------------------------	--	------	-------------------

Exposure Conditions

Phantom Section, TSL	Position, Test Distance [mm]	Band	Group, UID	Frequency [MHz], Channel Number	Conversion Factor	TSL Conductivity [S/m]	TSL Permittivity
Flat, HSL	EDGE FRONT, 5.00	WLAN 5GHz	WLAN, 10401-AAE	5795.0, 159	5.15	5.18	35.3

Hardware Setup

Phantom	TSL, Measured Date	Probe, Calibration Date	DAE, Calibration Date
ELI V8.0 (20deg probe tilt) - 2178	HSL600-10000 Charge: xxxx, 2023-Feb-22	EX3DV4 - SN7733, 2022-08-02	DAE4 Sn1739, 2022-07-29

Scan Setup

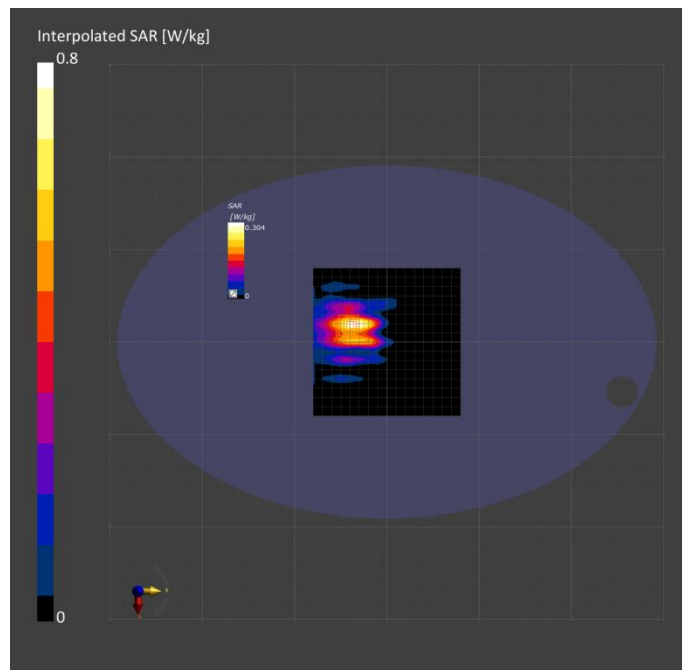
	Area Scan	Zoom Scan
Grid Extents [mm]	160.0 x 160.0	22.0 x 22.0 x 22.0
Grid Steps [mm]	10.0 x 10.0	4.0 x 4.0 x 1.4
Sensor Surface [mm]	3.0	1.4
Graded Grid	Yes	Yes
Grading Ratio	1.5	1.4
MAIA	Y	Y
Surface Detection	VMS + 6p	VMS + 6p
Scan Method	Measured	Measured

Measurement Results

	Area Scan	Zoom Scan
Date	2023-02-22, 12:05	2023-02-22, 12:13
psSAR1g [W/Kg]	0.294	0.303
psSAR10g [W/Kg]	0.129	0.146
Power Drift [dB]	-0.09	-0.08
Power Scaling	Disabled	Disabled
Scaling Factor [dB]		
TSL Correction	No correction	No correction

Warning(s) / Error(s)

Details	Area Scan	Zoom Scan
Warning(s) Error(s)		



Measurement Report for Device, EDGE TOP, WLAN 5GHz, UID 10062 CAE, Channel 36 (5180.000MHz)

Device under Test Properties

Model, Manufacturer Device,	Dimensions [mm]	IMEI	DUT Type
	120.0 x 120.0 x 120.0		Phone

Exposure Conditions

Phantom Section, TSL	Position, Test Distance [mm]	Band	Group, UID	Frequency [MHz], Channel Number	Conversion Factor	TSL Conductivity [S/m]	TSL Permittivity
Flat, HSL	EDGE TOP, 0.00	WLAN 5GHz	WLAN, 10062-CAE	5180.000, 36	5.57	4.65	36.2

Hardware Setup

Phantom	TSL, Measured Date	Probe, Calibration Date	DAE, Calibration Date
ELI V8.0 (20deg probe tilt) - 2178	HBBL-600-10000 Charge:xxxx, 2024-Jan-04	EX3DV4 - SN7383, 2023-06-05	DAE3 Sn427, 2023-05-17

Scan Setup

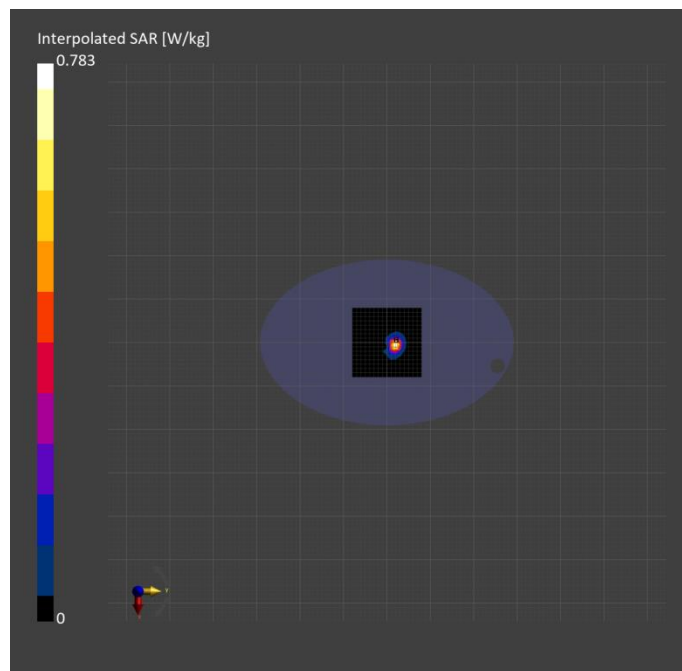
	Area Scan	Zoom Scan
Grid Extents [mm]	160.0 x 160.0	22.0 x 22.0 x 22.0
Grid Steps [mm]	10.0 x 10.0	4.0 x 4.0 x 1.4
Sensor Surface [mm]	3.0	1.4
Graded Grid	N/A	Yes
Grading Ratio	N/A	1.4
MAIA	N/A	N/A
Surface Detection	VMS + 6p	VMS + 6p
Scan Method	Measured	Measured

Measurement Results

	Area Scan	Zoom Scan
Date	2024-01-04, 13:14	2024-01-04, 13:23
psSAR1g [W/kg]	0.623	0.652
psSAR10g [W/kg]	0.216	0.201
Power Drift [dB]	-0.05	-0.07
Power Scaling	Disabled	Disabled
Scaling Factor [dB]		
TSL Correction	No correction	No correction
M2/M1 [%]		60.8
Dist 3dB Peak [mm]		4.0

Warning(s) / Error(s)

Details	Area Scan	Zoom Scan
Warning(s)		
Error(s)		



4790686575 5.1GHz WiFi 802.11A 40CH Top Edge 0mm-ANT1

Measurement Report for Device, EDGE TOP, WLAN 5GHz, UID 10062 CAE, Channel 40 (5200.000MHz)

Device under Test Properties

Model, Manufacturer Device,	Dimensions [mm] 120.0 x 120.0 x 120.0	IMEI	DUT Type Phone
--------------------------------	--	------	-------------------

Exposure Conditions

Phantom Section, TSL	Position, Test Distance [mm]	Band	Group, UID	Frequency [MHz], Channel Number	Conversion Factor	TSL Conductivity [S/m]	TSL Permittivity
Flat, HSL	EDGE TOP, 0.00	WLAN 5GHz	WLAN, 10062-CAE	5200.000, 40	5.57	4.69	36.1

Hardware Setup

Phantom	TSL, Measured Date	Probe, Calibration Date	DAE, Calibration Date
ELI V8.0 (20deg probe tilt) - 2178	HBBL-600-10000 Charge:xxxx, 2024-Jan-04	EX3DV4 - SN7383, 2023-06-05	DAE3 Sn427, 2023-05-17

Scan Setup

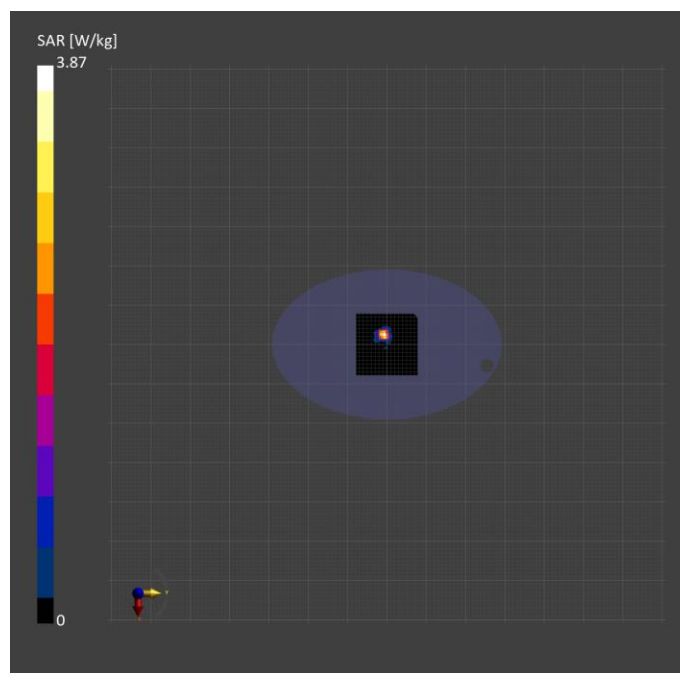
	Area Scan	Zoom Scan
Grid Extents [mm]	160.0 x 160.0	22.0 x 22.0 x 22.0
Grid Steps [mm]	10.0 x 10.0	4.0 x 4.0 x 1.4
Sensor Surface [mm]	3.0	1.4
Graded Grid	N/A	Yes
Grading Ratio	N/A	1.4
MAIA	N/A	N/A
Surface Detection	VMS + 6p	VMS + 6p
Scan Method	Measured	Measured

Measurement Results

	Area Scan	Zoom Scan
Date	2024-01-04, 15:45	2024-01-04, 15:55
psSAR1g [W/kg]	3.13	3.11
psSAR10g [W/kg]	0.953	0.868
Power Drift [dB]	0.01	-0.01
Power Scaling	Disabled	Disabled
Scaling Factor [dB]		
TSL Correction	No correction	No correction
M2/M1 [%]		66.6
Dist 3dB Peak [mm]		7.4

Warning(s) / Error(s)

Details	Area Scan	Zoom Scan
Warning(s)		
Error(s)		



Measurement Report for Device, EDGE FRONT, WLAN 5GHz, UID 10402 AAE, Channel 42 (5210.0MHz)

Device under Test Properties

Model, Manufacturer Device,	Dimensions [mm]	IMEI	DUT Type
	120.0 x 120.0 x 120.0		Phone

Exposure Conditions

Phantom Section, TSL	Position, Test Distance [mm]	Band	Group, UID	Frequency [MHz], Channel Number	Conversion Factor	TSL Conductivity [S/m]	TSL Permittivity
Flat, HSL	EDGE TOP, 0.00	WLAN 5GHz	WLAN, 10402-AAE	5210.0, 42	5.92	4.64	35.0

Hardware Setup

Phantom	TSL, Measured Date	Probe, Calibration Date	DAE, Calibration Date
ELI V8.0 (20deg probe tilt) - 2178	HSL600-10000 Charge: xxxx, 2023-Feb-21	EX3DV4 - SN7733, 2022-08-02	DAE4 Sn1739, 2022-07-29

Scan Setup

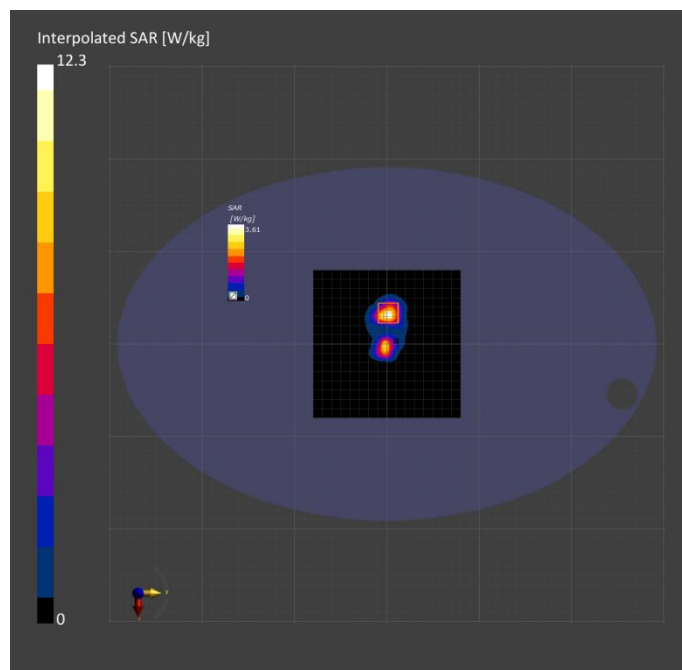
	Area Scan	Zoom Scan
Grid Extents [mm]	160.0 x 160.0	22.0 x 22.0 x 22.0
Grid Steps [mm]	10.0 x 10.0	4.0 x 4.0 x 1.4
Sensor Surface [mm]	3.0	1.4
Graded Grid	Yes	Yes
Grading Ratio	1.5	1.4
MAIA	N/A	N/A
Surface Detection	VMS + 6p	VMS + 6p
Scan Method	Measured	Measured

Measurement Results

	Area Scan	Zoom Scan
Date	2023-02-23, 15:31	2023-02-23, 15:48
psSAR1g [W/Kg]	3.07	2.90
psSAR10g [W/Kg]	0.980	0.955
Power Drift [dB]	0.02	0.00
Power Scaling	Disabled	Disabled
Scaling Factor [dB]		
TSL Correction	No correction	No correction

Warning(s) / Error(s)

Details	Area Scan	Zoom Scan
Warning(s) Error(s)		



Measurement Report for Device, EDGE TOP, WLAN 5GHz, UID 10317 AAD, Channel 149 (5745.0MHz)

Device under Test Properties

Model, Manufacturer Device,	Dimensions [mm]	IMEI	DUT Type
	120.0 x 120.0 x 120.0		Phone

Exposure Conditions

Phantom Section, TSL	Position, Test Distance [mm]	Band	Group, UID	Frequency [MHz], Channel Number	Conversion Factor	TSL Conductivity [S/m]	TSL Permittivity
Flat, HSL	EDGE TOP, 0.00	WLAN 5GHz	WLAN, 10317-AAD	5745.0, 149	5.15	5.13	35.5

Hardware Setup

Phantom	TSL, Measured Date	Probe, Calibration Date	DAE, Calibration Date
ELI V8.0 (20deg probe tilt) - 2178	HSL600-10000 Charge: xxxx, 2023-Feb-22	EX3DV4 - SN7733, 2022-08-02	DAE4 Sn1739, 2022-07-29

Scan Setup

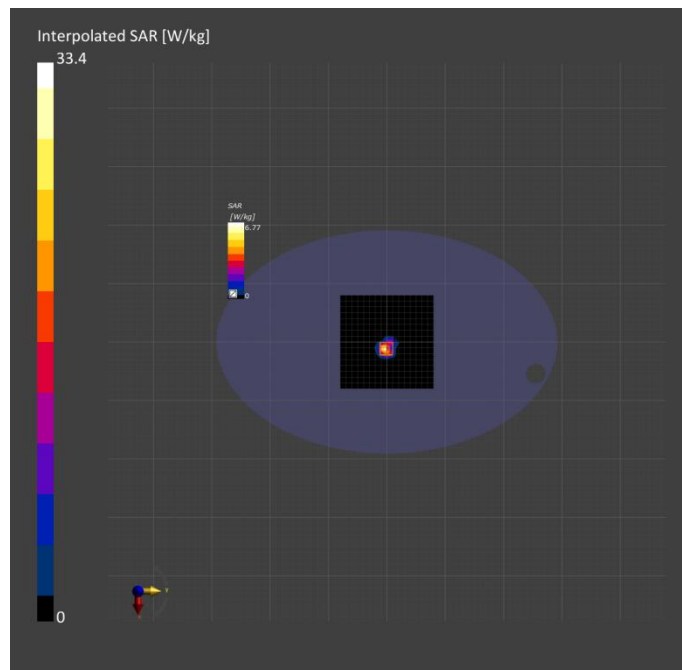
	Area Scan	Zoom Scan
Grid Extents [mm]	160.0 x 160.0	22.0 x 22.0 x 22.0
Grid Steps [mm]	10.0 x 10.0	3.6 x 3.6 x 1.4
Sensor Surface [mm]	3.0	1.4
Graded Grid	Yes	Yes
Grading Ratio	1.5	1.4
MAIA	N/A	N/A
Surface Detection	VMS + 6p	VMS + 6p
Scan Method	Measured	Measured

Measurement Results

	Area Scan	Zoom Scan
Date	2023-02-23, 16:18	2023-02-23, 16:28
psSAR1g [W/Kg]	5.14	6.84
psSAR10g [W/Kg]	1.64	1.90
Power Drift [dB]	-0.00	-0.05
Power Scaling	Disabled	Disabled
Scaling Factor [dB]		
TSL Correction	No correction	No correction

Warning(s) / Error(s)

Details	Area Scan	Zoom Scan
Warning(s) Error(s)		



4790686575 5.8GHz WiFi 802.11A 165CH Top Edge 0mm-ANT1

Measurement Report for Device, EDGE TOP, WLAN 5GHz, UID 10317 AAD, Channel 165 (5825.0MHz)

Device under Test Properties

Model, Manufacturer Device,	Dimensions [mm] 120.0 x 120.0 x 120.0	IMEI	DUT Type Phone
--------------------------------	--	------	-------------------

Exposure Conditions

Phantom Section, TSL	Position, Test Distance [mm]	Band	Group, UID	Frequency [MHz], Channel Number	Conversion Factor	TSL Conductivity [S/m]	TSL Permittivity
Flat, HSL	EDGE TOP, 0.00	WLAN 5GHz	WLAN, 10317-AAD	5825.0, 165	5.15	5.24	35.3

Hardware Setup

Phantom	TSL, Measured Date	Probe, Calibration Date	DAE, Calibration Date
ELI V8.0 (20deg probe tilt) - 2178	HSL600-10000 Charge: xxxx, 2023-Feb-22	EX3DV4 - SN7733, 2022-08-02	DAE4 Sn1739, 2022-07-29

Scan Setup

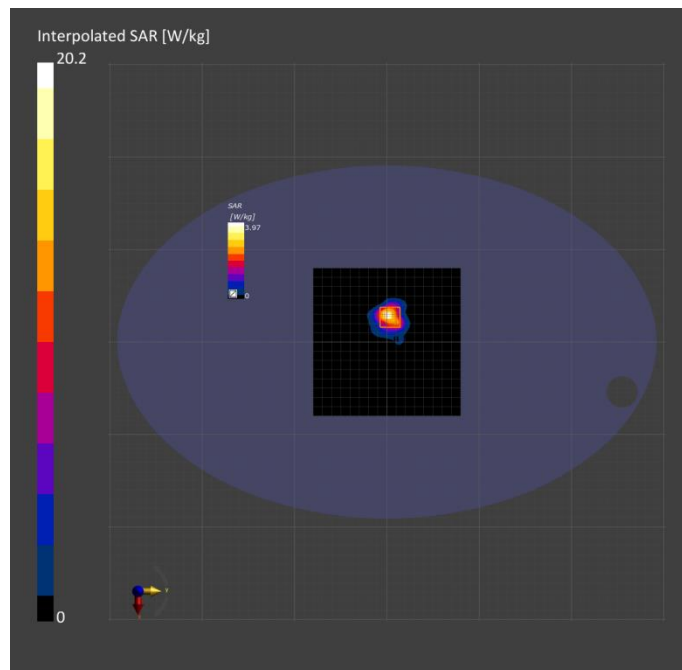
	Area Scan	Zoom Scan
Grid Extents [mm]	160.0 x 160.0	22.0 x 22.0 x 22.0
Grid Steps [mm]	10.0 x 10.0	4.0 x 4.0 x 1.4
Sensor Surface [mm]	3.0	1.4
Graded Grid	Yes	Yes
Grading Ratio	1.5	1.4
MAIA	N/A	N/A
Surface Detection	VMS + 6p	VMS + 6p
Scan Method	Measured	Measured

Measurement Results

	Area Scan	Zoom Scan
Date	2023-02-23, 16:00	2023-02-23, 16:07
psSAR1g [W/Kg]	3.65	4.28
psSAR10g [W/Kg]	1.23	1.33
Power Drift [dB]	-0.03	-0.03
Power Scaling	Disabled	Disabled
Scaling Factor [dB]		
TSL Correction	No correction	No correction

Warning(s) / Error(s)

Details	Area Scan	Zoom Scan
Warning(s) Error(s)		



Measurement Report for Device, EDGE TOP, WLAN 5GHz, UID 10317 AAE, Channel 151 (5755.0MHz)

Device under Test Properties

Model, Manufacturer Device,	Dimensions [mm]	IMEI	DUT Type
	120.0 x 120.0 x 120.0		Phone

Exposure Conditions

Phantom Section, TSL	Position, Test Distance [mm]	Band	Group, UID	Frequency [MHz], Channel Number	Conversion Factor	TSL Conductivity [S/m]	TSL Permittivity
Flat, HSL	EDGE TOP, 0.00	WLAN 5GHz	WLAN, 10401-AAE	5755.0, 151	5.15	5.14	35.4

Hardware Setup

Phantom	TSL, Measured Date	Probe, Calibration Date	DAE, Calibration Date
ELI V8.0 (20deg probe tilt) - 2178	HSL600-10000 Charge: xxxx, 2023-Feb-22	EX3DV4 - SN7733, 2022-08-02	DAE4 Sn1739, 2022-07-29

Scan Setup

	Area Scan	Zoom Scan
Grid Extents [mm]	160.0 x 160.0	22.0 x 22.0 x 22.0
Grid Steps [mm]	10.0 x 10.0	3.6 x 3.6 x 1.4
Sensor Surface [mm]	3.0	1.4
Graded Grid	Yes	Yes
Grading Ratio	1.5	1.4
MAIA	N/A	N/A
Surface Detection	VMS + 6p	VMS + 6p
Scan Method	Measured	Measured

Measurement Results

	Area Scan	Zoom Scan
Date	2023-02-23, 16:40	2023-02-23, 16:57
psSAR1g [W/Kg]	5.21	5.24
psSAR10g [W/Kg]	1.67	1.66
Power Drift [dB]	-0.03	-0.07
Power Scaling	Disabled	Disabled
Scaling Factor [dB]		
TSL Correction	No correction	No correction

Warning(s) / Error(s)

Details	Area Scan	Zoom Scan
Warning(s) Error(s)		

