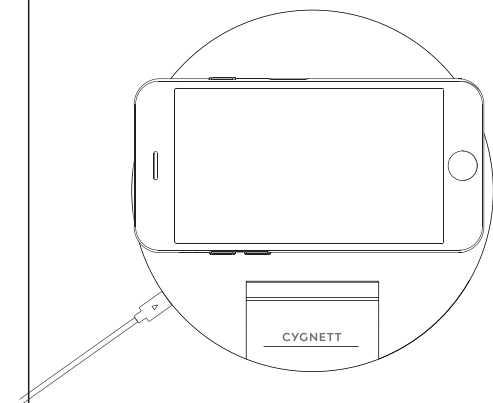


# CYGNETT

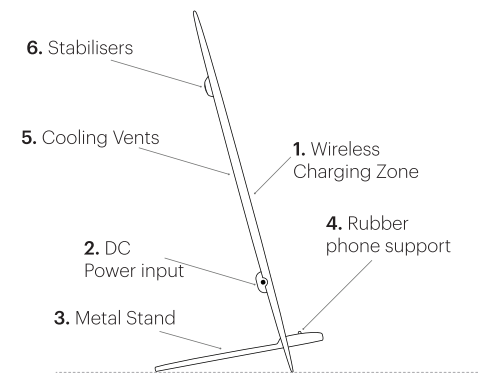
## Prime 10W Wireless Charger



### Product Information

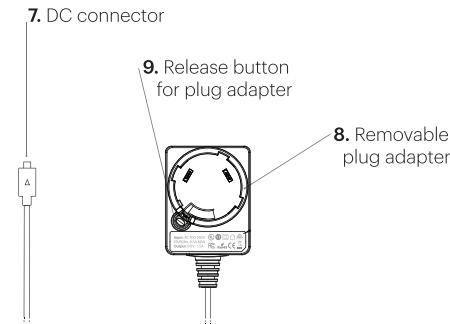
#### 10W Wireless Charger

1. Wireless Charging Zone
2. DC Power input
3. Metal Stand
4. Rubber phone support
5. Cooling Vents
6. Stabilisers



#### DC Charger

7. DC connector
8. Removable plug adapter
9. Release button for plug adapter



### Compatible Devices

Works in conjunction with iPhone 8 / iPhone 8 Plus/ iPhone X, Samsung Galaxy, S8 and Note 8 and many other wireless charging compatible devices and any other phone via USB.  
\* Compatible with all lightweight cases (measuring under 3mm in thickness).  
\* Cases made from metal may disrupt the wireless charging.

**Note: All devices must be Qi standard.**

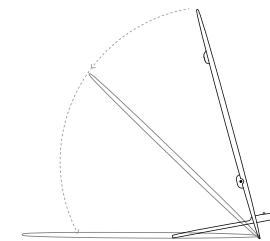
**Please note that when using Wireless charging and USB outputs at the same time, charging speed will be slower.**

### Instructions

1. **Connect the power adapter.**  
To begin using your Prime wireless charger you will need to connect the DC Power Adapter. In some regions two different plug adapters will be included in the box. To change the plug adapter simply press release button (9), and then twist the plug anti clockwise and pull to remove. Then replace with the correct plug type for your region/country. Then plug the DC connector (7) into the DC input (2) of the Wireless Charger, and the DC power adapter into the wall socket.

#### 2. Adjust the Angle

You can adjust the angle by moving the metal stand (3) to the desired position. You can also place your device in vertical or horizontal orientation.



#### 3. Compatible Devices

The Prime wireless charger supports fast wireless charging up to 10W for Samsung devices, and up to 7.5W charging.

#### Wireless Device Compatibility (Smartphones)

iPhone X, iPhone 8 Plus, Galaxy Note 8, iPhone 8, Galaxy S7 Edge+, Galaxy S6 Edge, Galaxy S8+, Galaxy S7 Edge, Galaxy S6, Galaxy S8, Galaxy S7.

### Product Specification

#### Prime Wireless Charger

**Input:** 9V/1.5A  
**Wireless Output:** 7.5W (iPhone)  
10W (Samsung)

#### Power Adapter

**Input:** AC 100-240V, 50/60hz, 0.5A  
**Output:** DC 9V-1.5A (13.5W)

**FCC ID:** 2AEDZ-WIRDE

### Troubleshooting steps

#### No Charging or Slow Charging

1. For optimum charge speed the base stand should be adjusted so the centre of the phone is aligned to the wireless charging zone of Race Wireless Charger.
2. Please ensure that the case on your phone is not affecting the wireless charging by removing it and checking the performance. Some cases interfere with wireless charging if they contain metallic material or are overly thick.

This equipment has been tested and found to comply with the limits for a WPC device, pursuant to Part 18 of the FCC Rules. These limits are designed to provide reasonable protection against harmful interference in a residential installation.

**NOTE:** This equipment has been tested and found to comply with the limits for a wireless power charger, pursuant to Part 18 of the FCC Rules. These limits are designed to provide reasonable protection against harmful interference in a residential installation. This equipment generates, uses and can radiate radio frequency energy and, if not installed and used in accordance with the instructions, may cause harmful interference to radio communications. However, there is no guarantee that interference will not occur in a particular installation. If this equipment does cause harmful interference to radio or television reception, which can be determined by turning the equipment off and on, the user is encouraged to try to correct the interference by one or more of the following measures:

- Reorient or relocate the receiving antenna.
- Increase the separation between the equipment and receiver.
- Connect the equipment into an outlet on a circuit different from that to which the receiver is connected.
- Consult the dealer or an experienced radio/TV technician for help.

**CAUTION:** Changes or modifications not expressly approved by the party responsible for compliance could void the user's authority to operate the product.

This equipment complies with FCC radiation exposure limits set forth for an uncontrolled environment. This equipment should be installed and operated with minimum distance 20cm between the radiator and your body. This transmitter must not be co-located or operating in conjunction with any other antenna or transmitter.