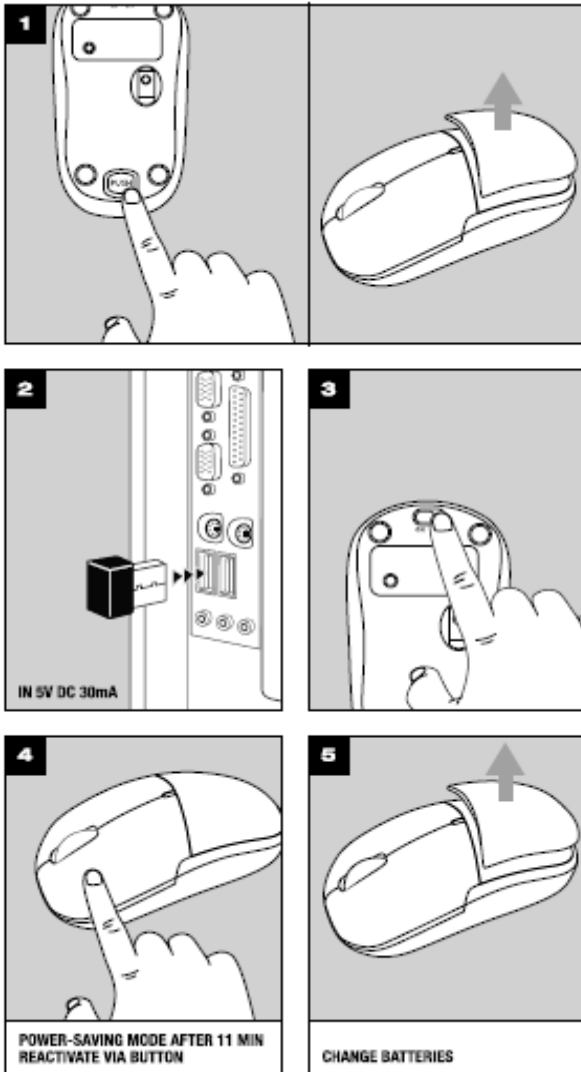


User Manual



1. Press the 'PUSH' button on the base of the mouse to unlock the battery compartment. Remove the battery compartment cover on the upper section of the base to insert the AA battery (1.5V). Make sure you insert the battery the correct way around. Replace the battery compartment cover.
2. Plug the USB connector into a free USB port (5V, 30mA) on your computer. The operating system will detect and install the device automatically.
3. Switch on the mouse by setting the switch on the base to 'ON'. If you do not intend to use the mouse, switch it off to save power.
4. After 11 minutes of inactivity, the mouse will switch to power-saving mode. Press any button to reactivate it.
5. As soon as you notice a drop in performance, replace the battery.

6 Environment condition:

(1).Operation temperature:0 °C ~50°C , humidity:20%RH~90%RH without condensations.

7 Matters needing attention:

- (1).Applications of the mouse will be affected on the rough or reflection surface.
- (2).Don't disassemble mouse and receiver
- (3).Use dry and soft cotton product clean mouse.
- (4).Careful choice battery. Its quality affects operation time and mouse life.

Instructions on "wireless"

Transmission frequency is 2.4GHz, it meet R&TTE Directive 1999/5/EC noun in Europe and its radiation does not harm human body .(far less than the mobile phone's radiation)

Instructions on battery

Don't throw the waste battery into recycle bin while replace battery.

§ 15.19 Labelling requirements.

This device complies with part 15 of the FCC Rules. Operation is subject to the following two conditions: (1) This device may not cause harmful interference, and (2) this device must accept any interference received, including interference that may cause undesired operation.

§ 15.21 Information to user.

Any Changes or modifications not expressly approved by the party responsible for compliance could void the user's authority to operate the equipment.

§ 15.105 Information to the user.

Note: This equipment has been tested and found to comply with the limits for a Class B digital device, pursuant to part 15 of the FCC Rules. These limits are designed to provide reasonable protection against harmful interference in a residential installation. This equipment generates uses and can radiate radio frequency energy and, if not installed and used in accordance with the instructions, may cause harmful interference to radio communications. However, there is no guarantee that interference will not occur in a particular installation. If this equipment does cause harmful interference to radio or television reception, which can be determined by turning the equipment off and on, the user is encouraged to try to correct the interference by one or more of the following measures:

- Reorient or relocate the receiving antenna.
- Increase the separation between the equipment and receiver.
- Connect the equipment into an outlet on a circuit different from that to which the receiver is connected.
- Consult the dealer or an experienced radio/TV technician for help.

*** RF warning for Portable device:**

The device has been evaluated to meet general RF exposure requirement. The device can be used in portable exposure condition without restriction.