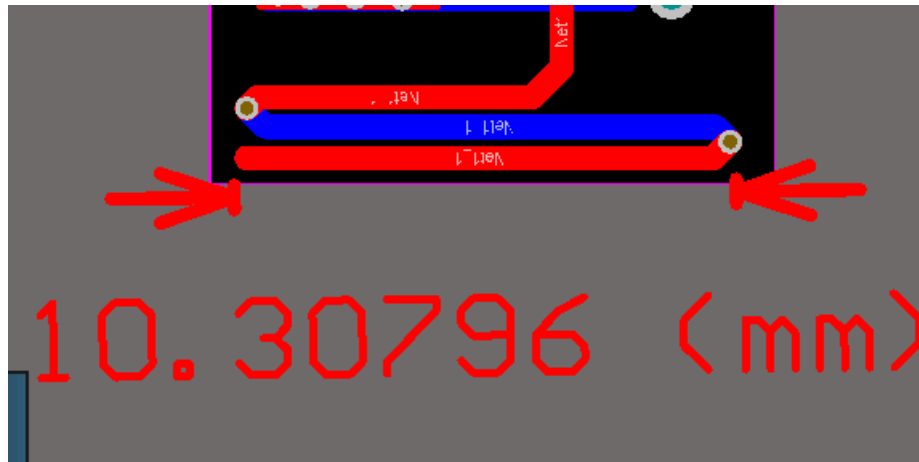


Dongle ANTENNA SPECIFICATION

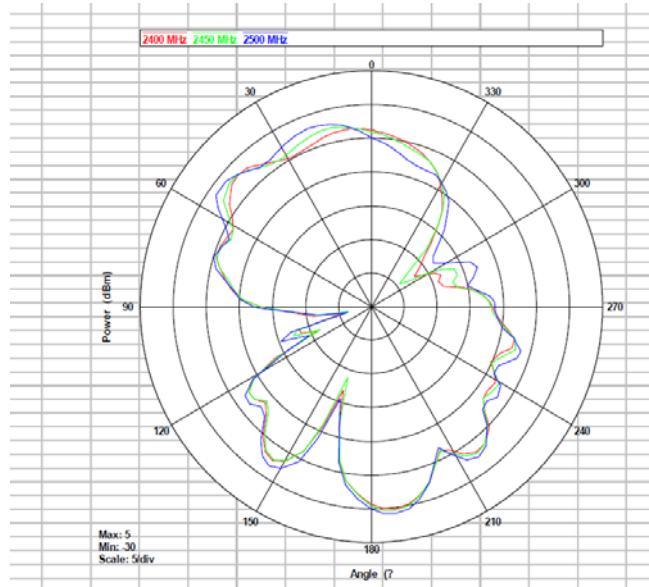
Summary

ITEM	Dongle ANT SPEC					
Model Name	2.4G ANT					
Center Frequency	Horizontal			Vertical		
	2400MHz	2450MHz	2500MHz	2400MHz	2450MHz	2500MHz
	-2.1	-3.2	-4.5	-16.7	-15.8	-13.2
MAX. Gain	-2.1					
Polarization	Horizontal and Vertical					
Azimuth Beam Pattern	Omni-directional					
Impedance	50 Ohm					
Antenna Length	28mm					
Manufacture						

Antenna Photo & Length (mm)

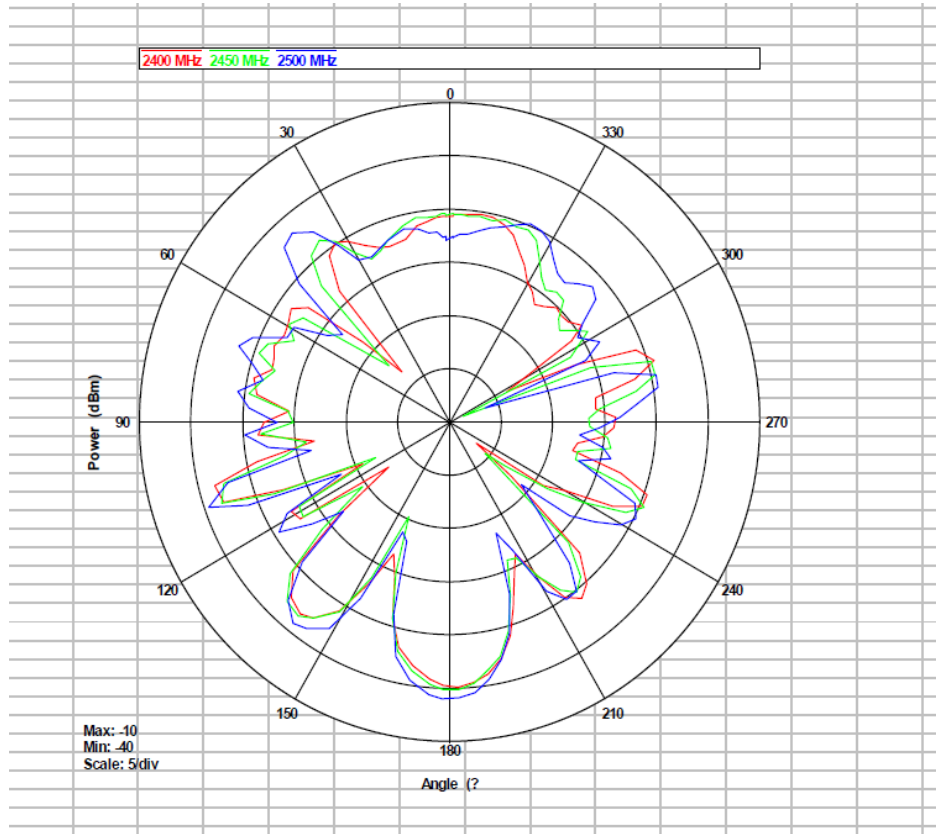


Horizontal: 2400 MHz 2450 MHz 2500 MHz
 Power (dBm)



Frequency (MHz)	Gain(dB)		
	Max	Min	Avg
2400	-0.21	-26.3	-6.3
2450	-1.2	-27.8	-5.7
2500	-2.1	-26.5	-4.8

Vertical: 2400 MHz 2450 MHz 2500 MHz
 Power (dBm)



Frequency (MHz)	Gain(dB)		
	Max	Min	Avg
2400	-17.2	-37.3	-22.3
2450	-16.3	-39.2	-19.7
2500	-15.2	-37.8	-21.2