

FRESH ELEMENT

SMART PET FEEDER

INSTRUCTION BOOK



Read instructions carefully before use, please keep it well.

PARTS

- FOOD STORAGE BUCKET LID**
 - Open the bucket lid, put the dry pet food in
- BUCKET RELEASE KEY**
 - Move finger left, push the release key to open the bucket
- Wi-Fi LIGHT**
- MANUAL FEED BUTTON**
 - Click to start/finish feeding process
- STATUS INDICATOR LIGHT**
 - Rest food indicator
 - Error indicator
- MAIN MACHINE**
- FOOD OUTLET DOOR**
 - The door opens automatically when feeding start
 - The door closes automatically when feeding finishes
- BASE**
- STAINLESS STEEL BOWL**
- BASE REGISTRATION COLUMN**



- BATTERY COVER**
 - Install 4 D-cell alkaline batteries for emergency power outages

PARTS

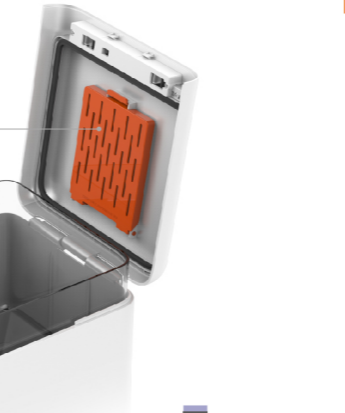
- MAIN MACHINE LOCATE HOLES**
 - Fix the main machine on the base
- ADAPTER SOCKET**
 - Connect adaptor
- OSCILLATING BAR**
 - Mix food, make it even, preventing any blockages
- CHECK-BOARD**
 - Cooperate with impeller institutions, apply to different size of dry pet food, to make sure feed as planned
- IMPELLER**
 - Soft materials, to prevent any blockages

- DESICCANT BOX**
 - Place the desiccant

- FOOD STORAGE BUCKET**
 - Holds dry pet food with 5.9L capacity

- Wi-Fi SETTING KEY**
 - Link to smart phone after long press

- BUCKET RELEASE BUTTON**
 - Allows bucket to be removed. Please keep bucket empty to prevent food from dropping into machine when taking out



INSTALL

- CONNECT ADAPTOR**
 - Take out the main machine, plug the power source adaptor into the power input, found under the main machine.

FCC Statement
Any Changes or modifications not expressly approved by the party responsible for compliance could void the user's authority to operate the equipment. This device complies with part 15 of the FCC Rules. Operation is subject to the following two conditions: (1) This device may not cause harmful interference, and (2) This device must accept any interference received, including interference that may cause undesired operation.

- INSTALL**
 - Place the base on a level surface.
 - Place make certain that the main machine power input and base connect are correct.

FCC Radiation Exposure Statement:
This equipment complies with FCC radiation exposure limits set forth for an uncontrolled environment. This equipment should be installed and operated with minimum distance 20cm between the radiator & your body.

- INSTALL BACKUP BATTERY**
 - Remove screws to open the battery cover.
 - Install 4 D-cell alkaline batteries in battery compartment. Make certain the bucket is empty and that there is no food in the bucket when you install or change the battery.
 - Upon battery installation, please calibrate: Press and hold the manual feed button until the food outlet door opens. You will hear a short beeping sound to indicate that the machine is ready for calibration. (Attention: if there is food inside, empty the container). Calibration is complete when you hear a long sound.
 - For every time install and remove batteries, please repeat steps 1, 2, and 3 to calibrate. Otherwise, the rest food indicator may be affected.



HOW TO USE

- OPEN THE LID**
 - Move release key to the left to open the lid of the food storage bucket.



- FILL WITH FOOD**
 - Fill with dry pet food after completing above steps.



- PUT DESICCANT IN**
 - Open desiccant package and flatten the desiccant evenly inside the small orange box.

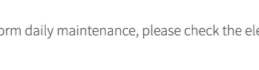


- MANUAL FEED**
 - Click the manual feed button and the food outlet door will open and start to feed. Click the manual feed button again and the outlet door will close, completing the feeding process.

- SMART PLAN FEED**
 - Download the PETKIT app in the App Store or Google Play. Once downloaded, add and link your equipment and set up your feeding plan. Open up the PETKIT app and click "+" to add your equipment. Follow the prompt to set up feeding plan for your pets.



Scan for more information



Note: To manage other issues or perform daily maintenance, please check the electronic directions.

BASIC PARAMETERS

Name	PETKIT SMART FEEDER
Product model	P512
Size	Main machine: 221 x 217 x 423mm Base: 445 x 223 x 50mm
Dry cell batteries	4 D-cell alkaline batteries
Recommended pet type	small to medium size dogs/cats
Total weight	5kg
Wireless	Wi-Fi enabled
Nominal voltage	6 VDC
Rated power	6W 1000Ma

ERROR DIAGNOSIS

Wi-Fi indicator light flashing	Smart feeder offline: First check your network connection. If network is stable, open the PETKIT app and tap the top right corner button to reset the Wi-Fi
Food storage indicator light keeps flashing	System error: Ensure that lid is tightly closed. Then reset the smart feeder.

NOTES

Failure in complying with these instructions may lead to equipment malfunction or pet's safety concern

- For dry pet food only.
- PLEASE place base on a level surface.
- DO NOT put anything (except dry pet food) into the bucket. Foreign objects will cause equipment to malfunction or lead to pet's safety concern.
- It is recommended to place equipment in a corner or against the wall. Please place at least 70mm distance between the base and the wall, however.
- DO NOT allow pets to bite the wire. It may cause an electric shock or death.
- DO NOT allow children under the age of 12 control or play with this equipment.
- DO NOT touch the food outlet door once the food is out.
- DO NOT put anything on top of the machine. Anything against the machine may affect the machine's function.
- PLEASE KEEP the bucket empty if you wish to take it out.
- For dog and cat use only. We DO NOT recommend any pet under the age of 3 months use this equipment.

ELECTRONIC DIRECTIONS



Scan to download electronic directions
<http://m.petkit.com/product/transfer.html?product=D1>

We will improve our product regularly to offer you the better product. May has difference between the real product and package photo.