

# Mobile Printing Hub TiS Model: MPH101A

## Quick Guide

### What's in the Box

Mobile Printing Hub (A)



USB Cable (B) °

(Connect between Mobile Print Hub with Printer)

### Note :

USB adaptor is not included in this product. Please use your own micro USB cable and USB adaptor or power bank to supply power to Mobile Printing Hub.

### Mobile Printing Hub overview :



Before connect Mobile Printing Hub, ensure printer power is on.



Connect micro USB cable (user prepare) to Mobile Printing Hub ( ① )  
Connect other end of USB cable to USB adaptor or power bank ( ② )



User prepare USB cable and power adaptor

Connect USB cable to Mobile Printing Hub ( ① )  
Connect USB cable to Printer ( ② )  
When both LEDs lit ( ③ ), Mobile Printing Hub is ready to use.



Video of setup and Android operation:

<https://www.youtube.com/watch?v=Jw7UgQOCnK0>



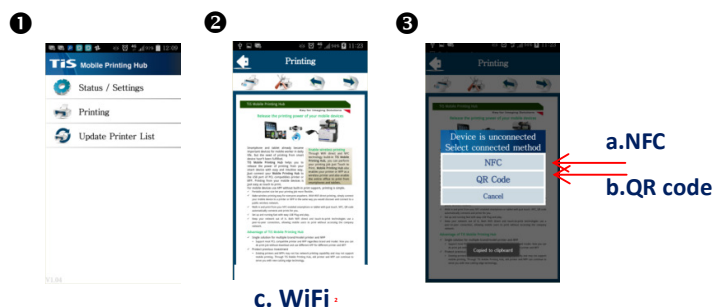
Android :

Download Mobile Printing Hub App(MPH) from google play and installed.



( ❶)Open MPH App ( ❷)

Select print file ( ❸)Open the file :

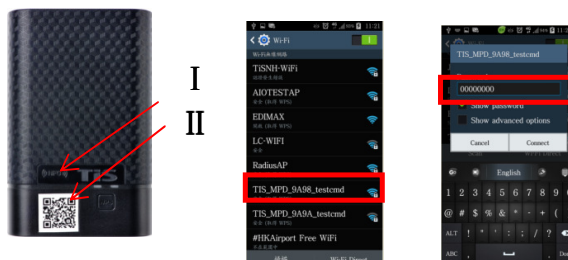


a NFC :

Tag the NFC mark in MPH as ( I ) then printing .  
( With NFC function )

b. QR code :

Scan QRcode in MPH as ( II ) then printing .  
( Without NFC function )



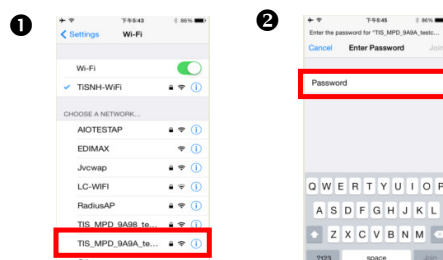
c. WiFi connect :

Open WiFi search MPH SSID  
( TiS\_MPH\_\*\*\*\* ) Input Password “00000000”  
connected then open MPH App touch print Icon  
to print .

iOS:

1 .Open WiFi on iPhone as ( ❶)

Search MPH SSID ( TiS\_MPH\_\*\*\*\* ) Input Password  
“00000000” as ( ❷)to connect MPH .



2. Open printing file share to AirPrint as ( a) to open  
AirPrint function as ( b), select printer as(c)then  
print



Video of setup and iOS operation:

<https://www.youtube.com/watch?v=Dh6H0fo6Kbs>



## FCC Notice

### § 15.21 Information to Users

Notice:

Any changes or modifications not expressly approved by the party responsible for compliance could void your authority to operate the equipment.

### § 15.105 Information to Users

Notice:

This equipment has been tested and found to comply with the limits for a Class B digital device, pursuant to part 15 of the FCC Rules. These limits are designed to provide reasonable protection against harmful interference in a residential installation. This equipment generates, uses and can radiate radio frequency energy and, if not installed and used in accordance with the instructions, may cause harmful interference to radio communications. However, there is no guarantee that interference will not occur in a particular installation. If this equipment does cause harmful interference to radio or television reception, which can be determined by turning the equipment off and on, the user is encouraged to try to correct the interference by one or more of the following measures:

- (1) Reorient or relocate the receiving antenna.
- (2) Increase the separation between the equipment and receiver.
- (3) Connect the equipment into an outlet on a circuit different from that to which the receiver is connected.
- (4) Consult the dealer or an experienced radio/TV technician for help.

### § 15.19 FCC Labelling Requirements

Notice:

This device complies with Part 15 of the FCC Rules. Operation is subject to the following two conditions:

- (1) this device may not cause harmful interference and
- (2) this device must accept any interference received, including interference that may cause undesired operation.

### FCC RF Radiation Exposure Statement

1. This Transmitter must not be co-located or operating in conjunction with any other antenna or transmitter.
2. This equipment complies with FCC RF radiation exposure limits set forth for an uncontrolled environment. This equipment should be installed and operated with a minimum distance of 20 centimeters between the radiator and your body.