

Internal Photos



Unit Top View



WiFi 5Ghz Antenna



WiFi 2.4Ghz Antenna



Front of Unit Top View



WiFi 5Ghz Antenna



WiFi 2.4Ghz Antenna



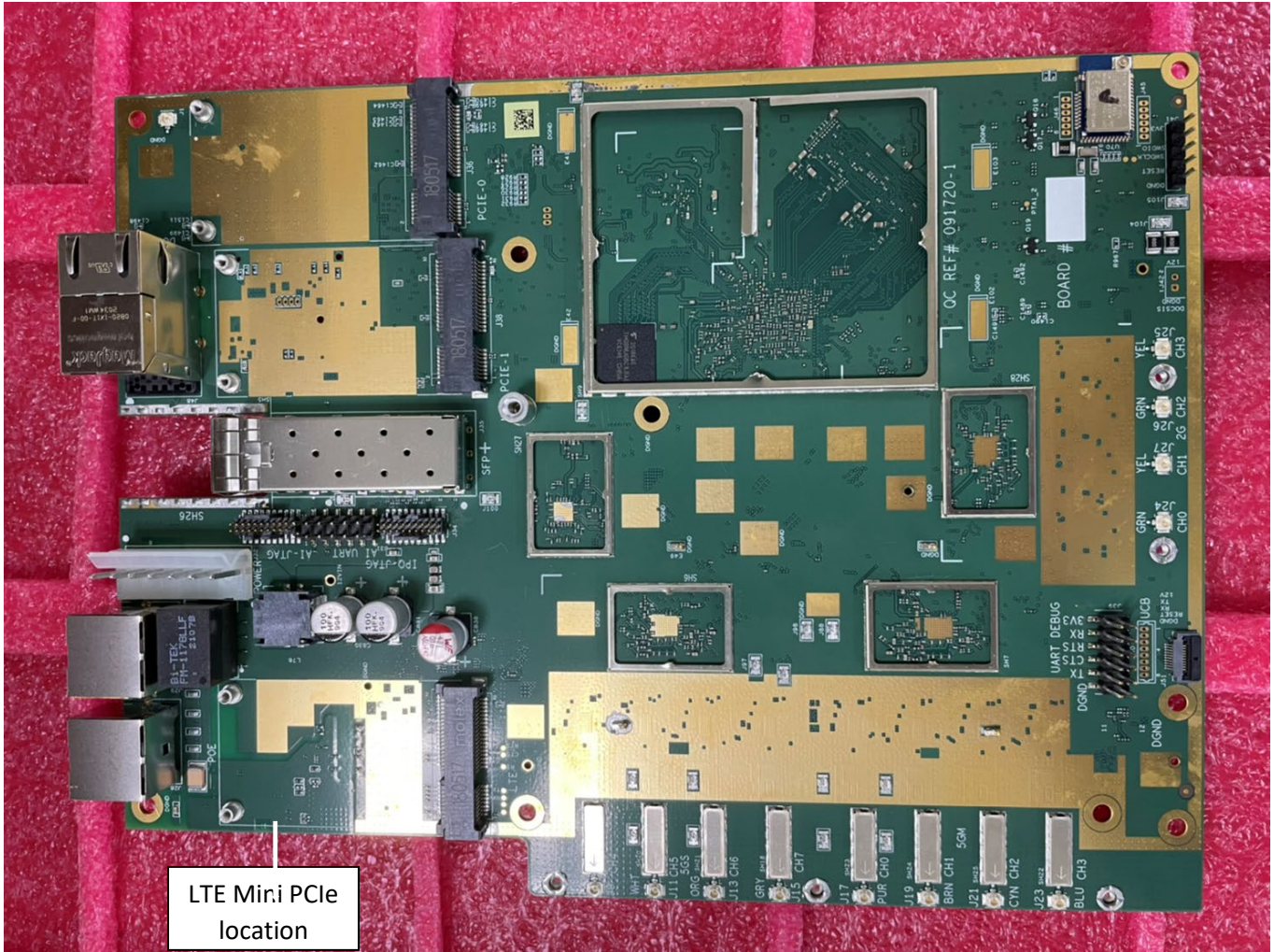
LTE Main Antenna



Rear of Unit Top View

LTE Diversity Antenna





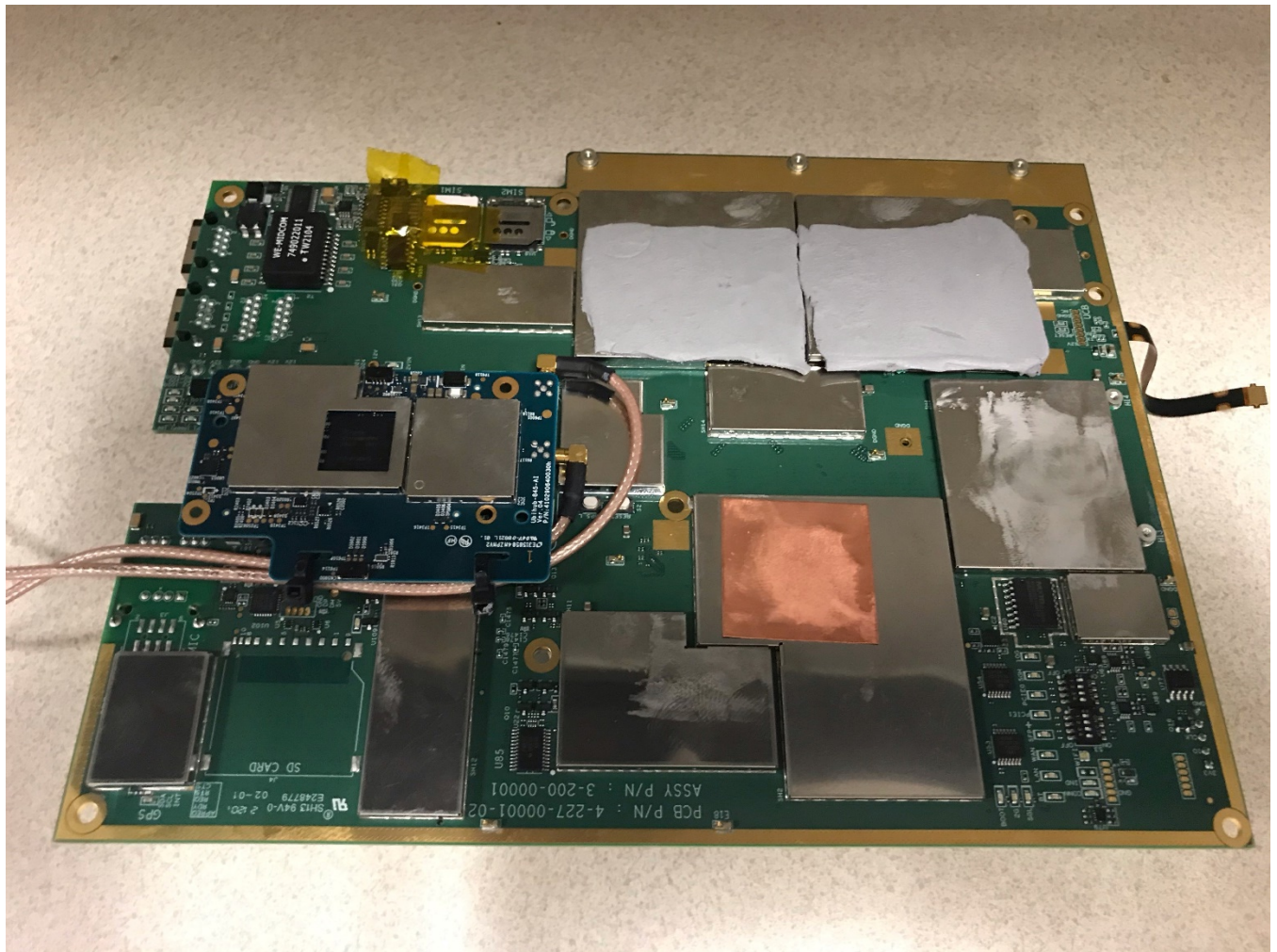
Main IPQ Board without Shields (Front)



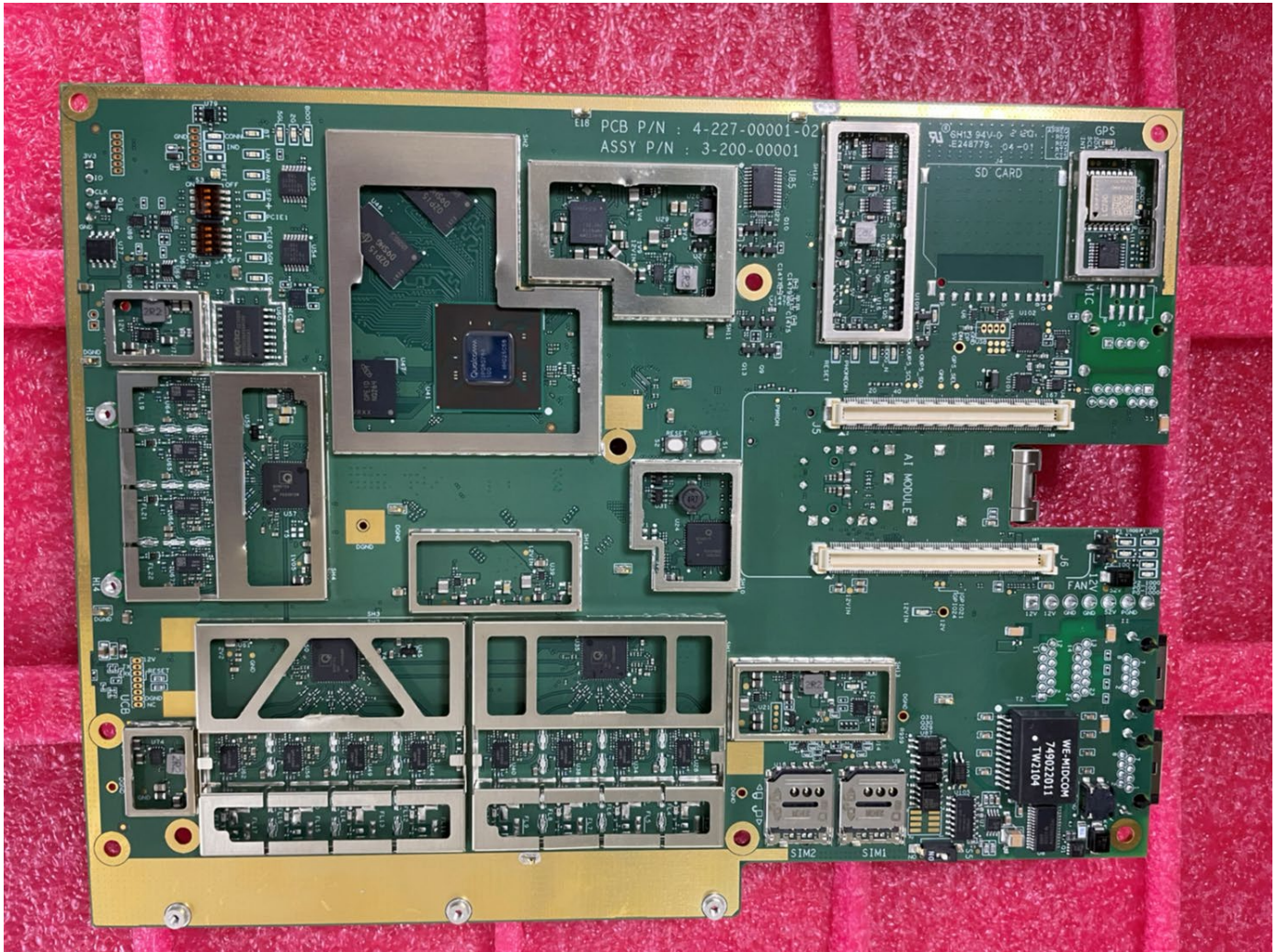
LTE Mini PCIe Modem (EG25G)



LTE Mini PCIe Modem (EP06A)



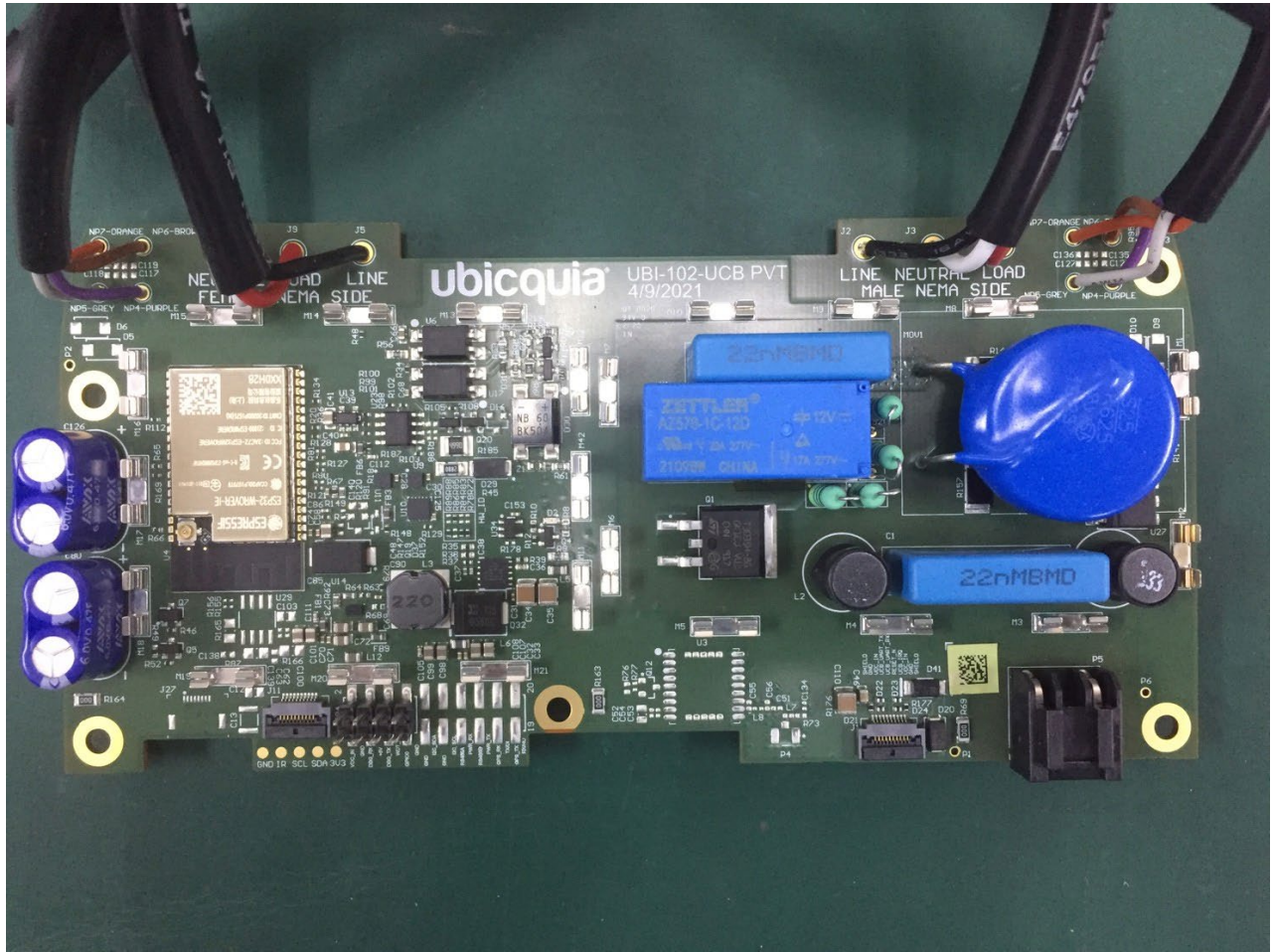
Main IPQ Board with Shields (Back)



Main IPQ Board without Shields (Back)



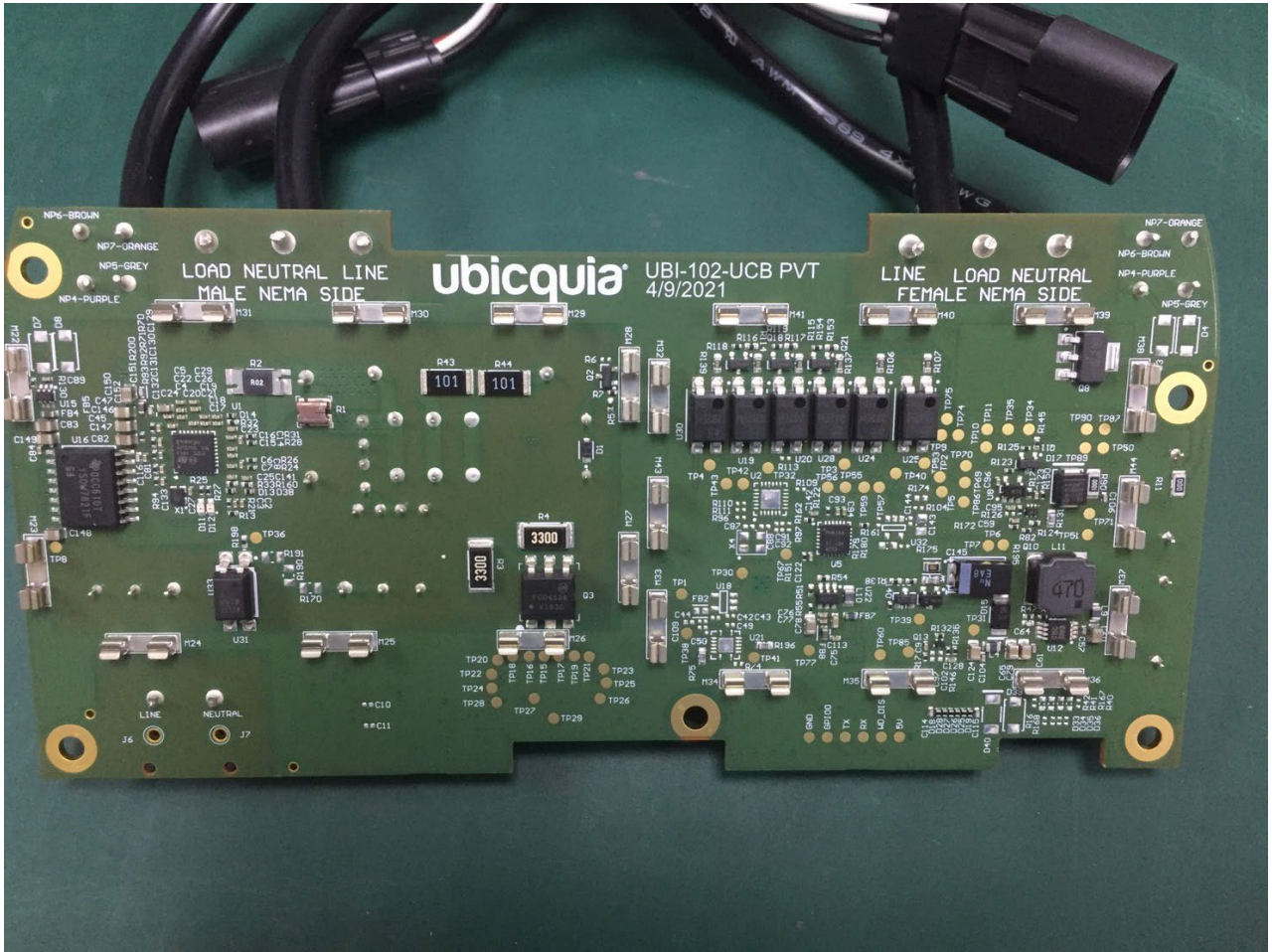
UCB Board with Shields (Front)



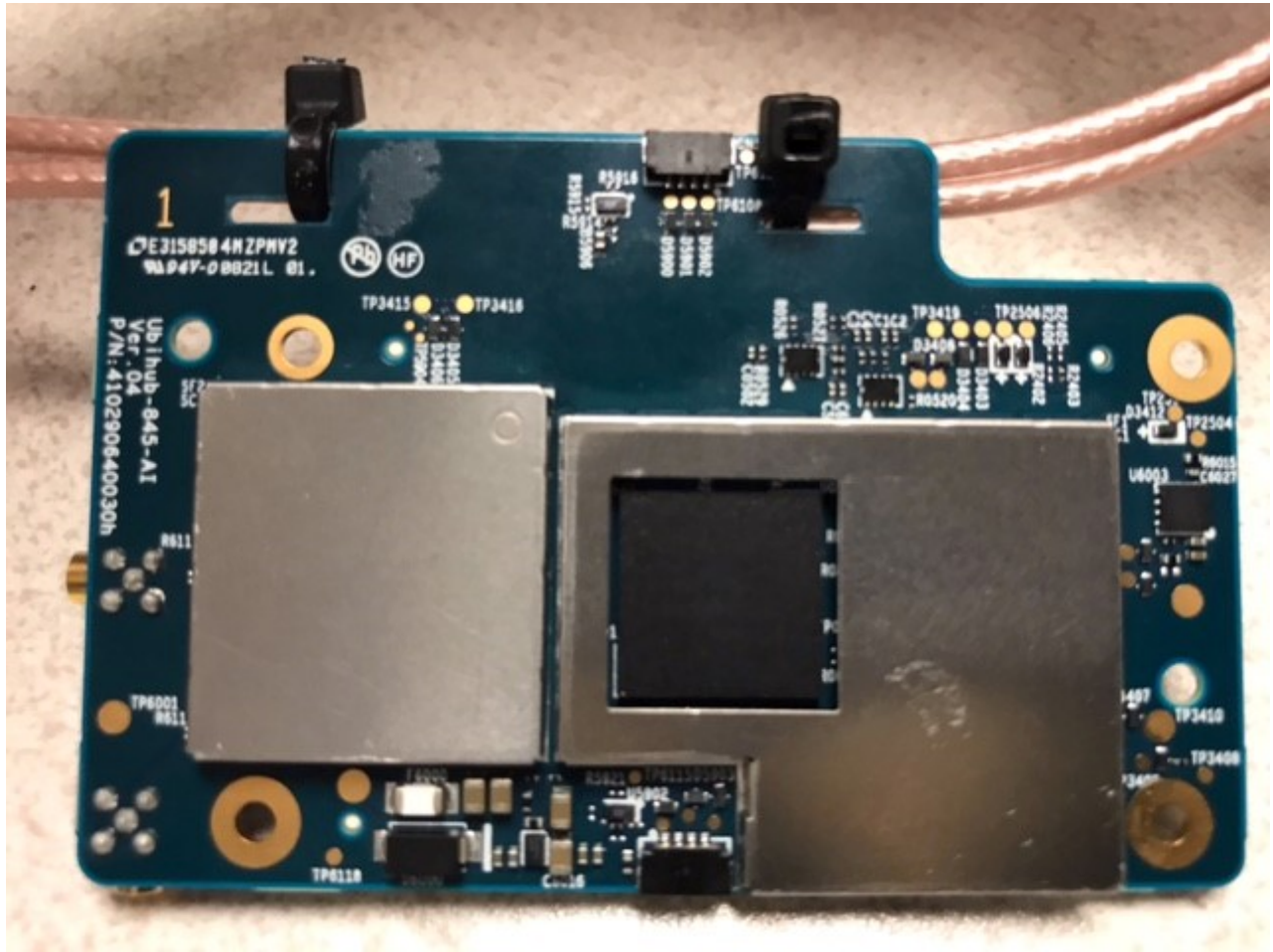
UCB Board without Shields (Front)



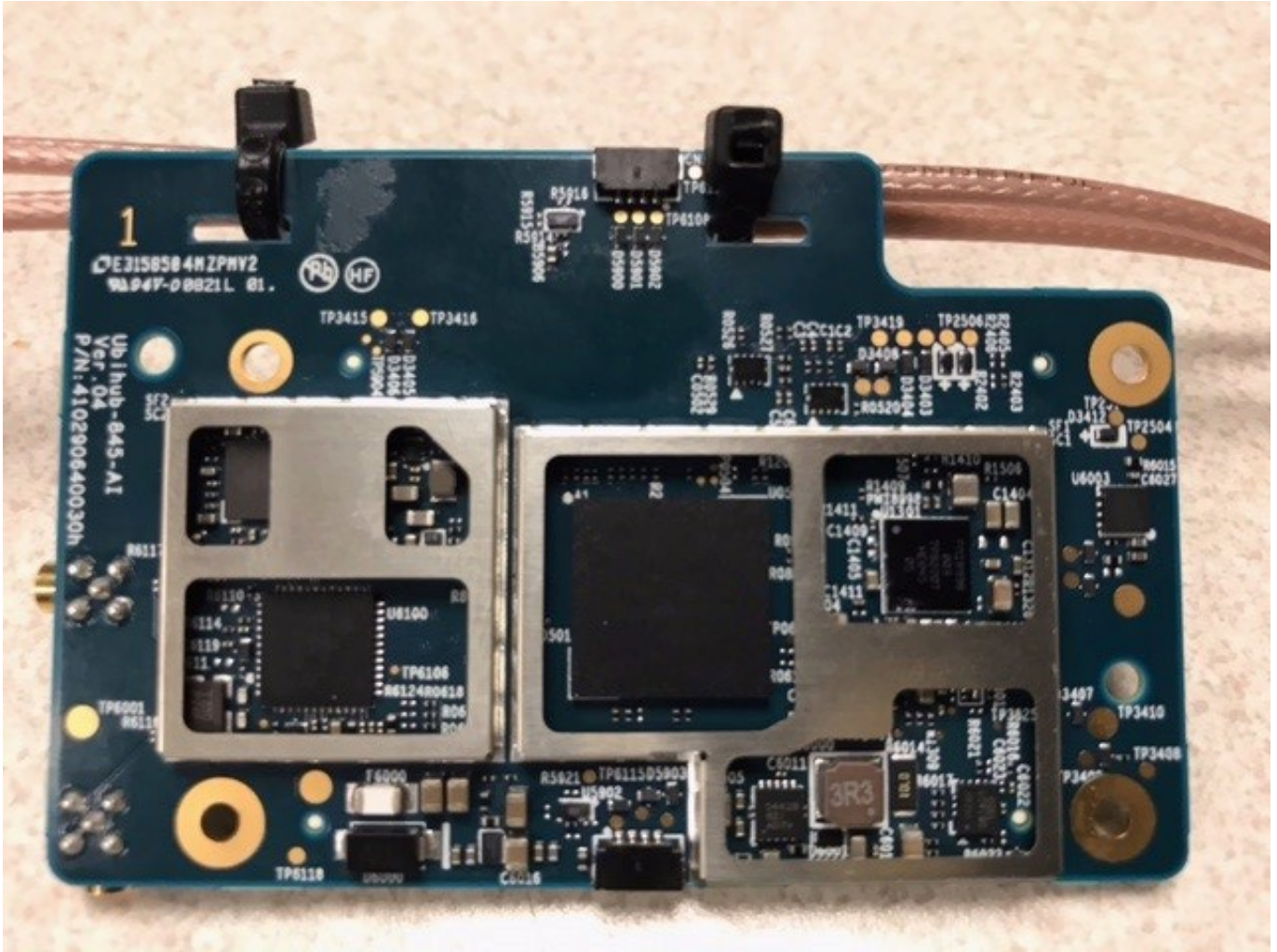
UCB Board with Shields (Back)



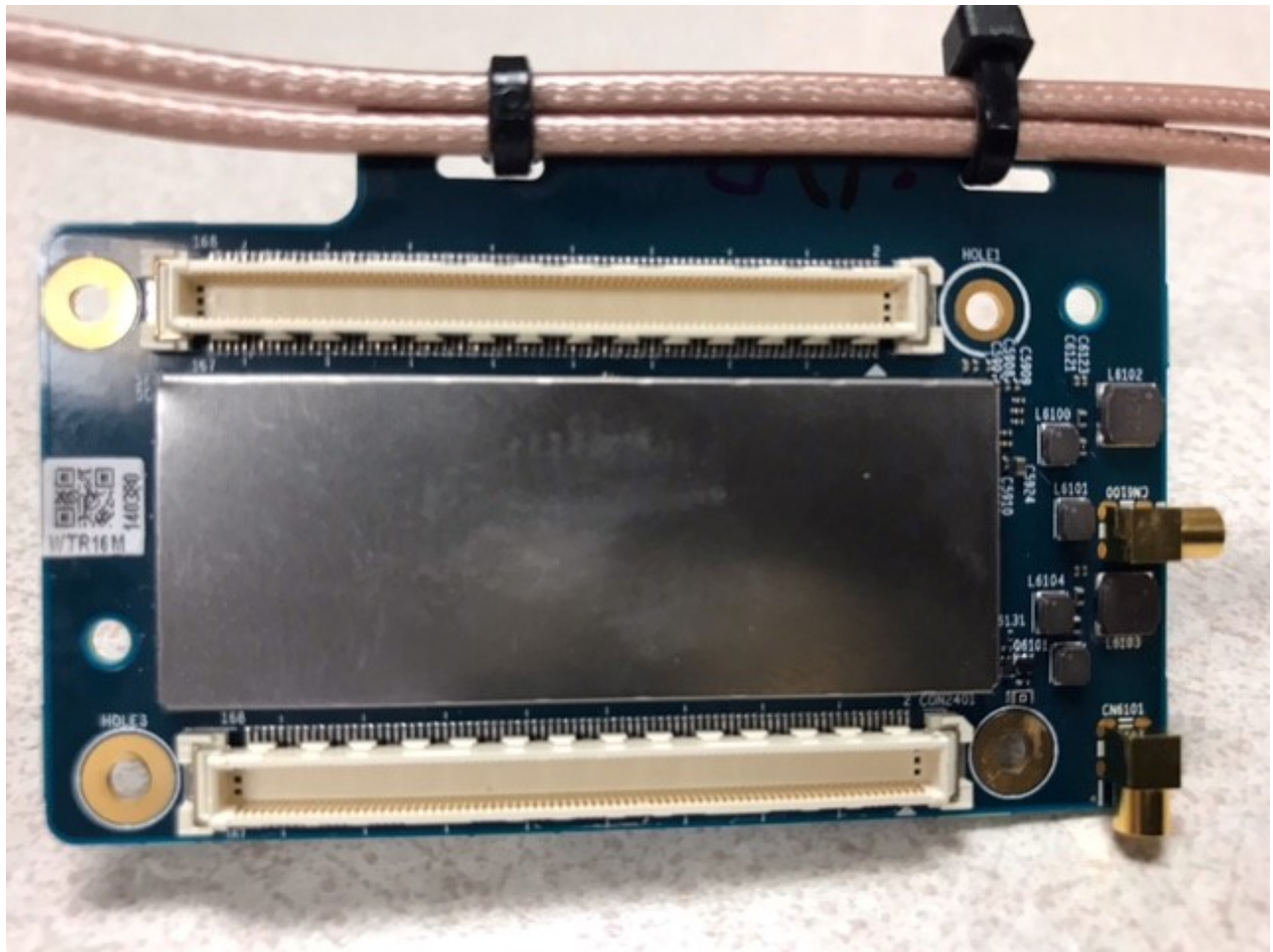
UCB Board without Shields (Back)



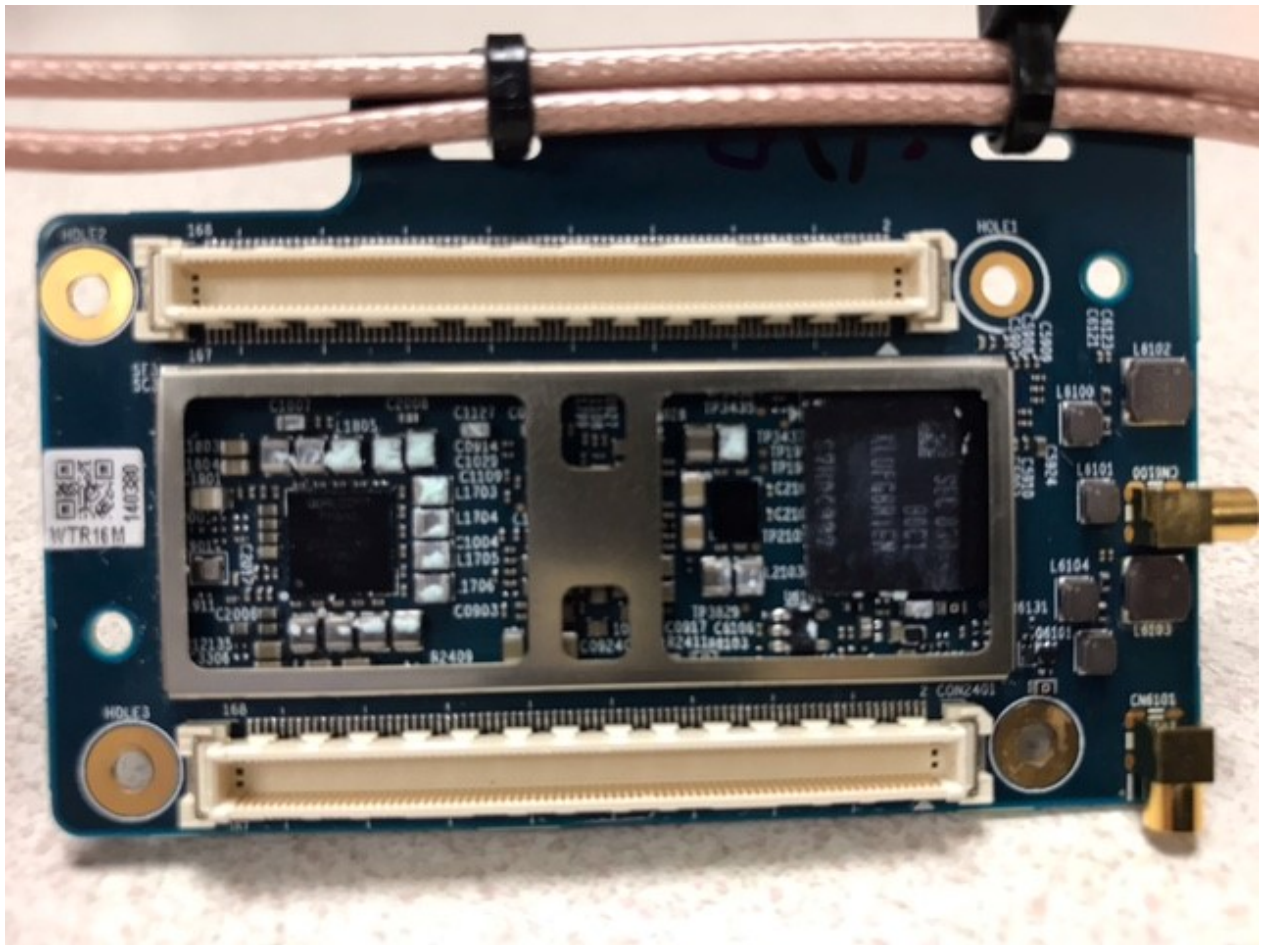
AI Board with Shields (Front)



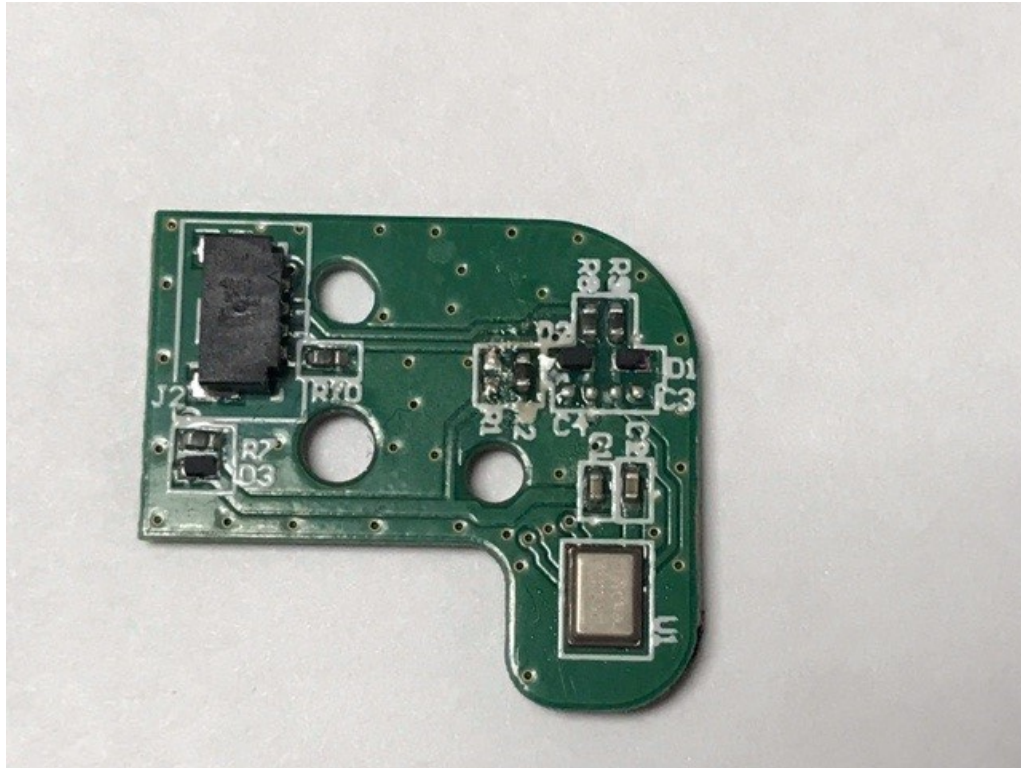
AI Board without Shields (Front)



AI Board with Shields (Back)



AI Board without Shields (Back)



MIC Board (Front)



MIC Board (Back)