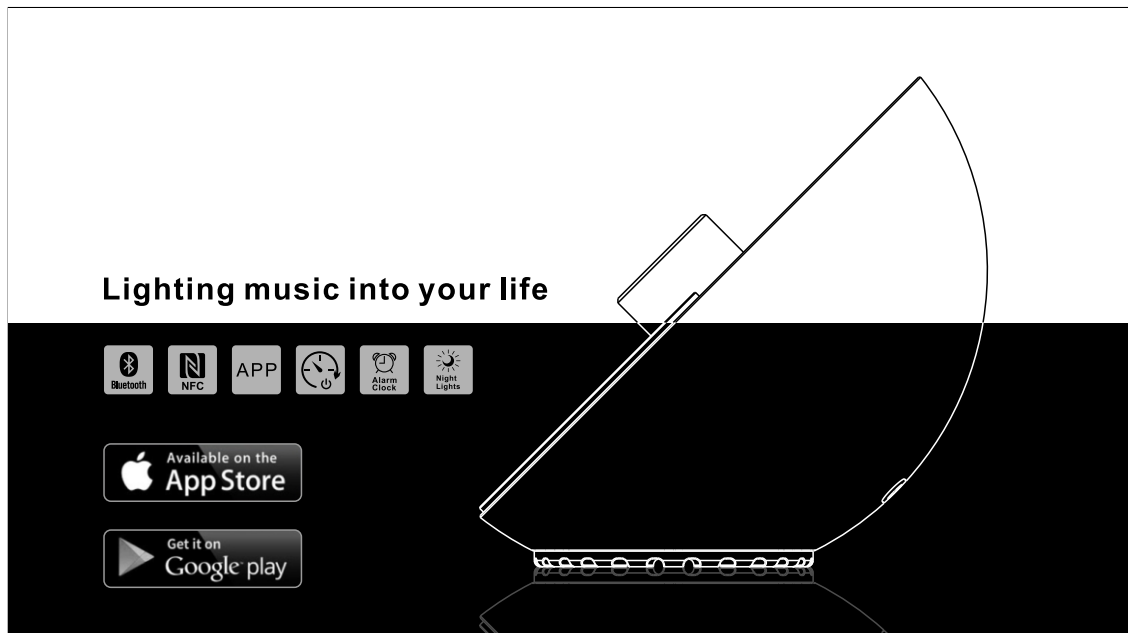
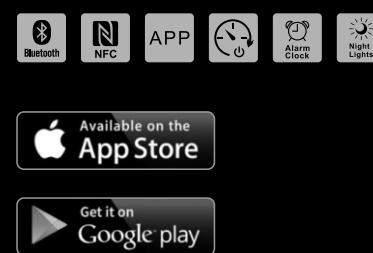


raphie
LIGHT BOX



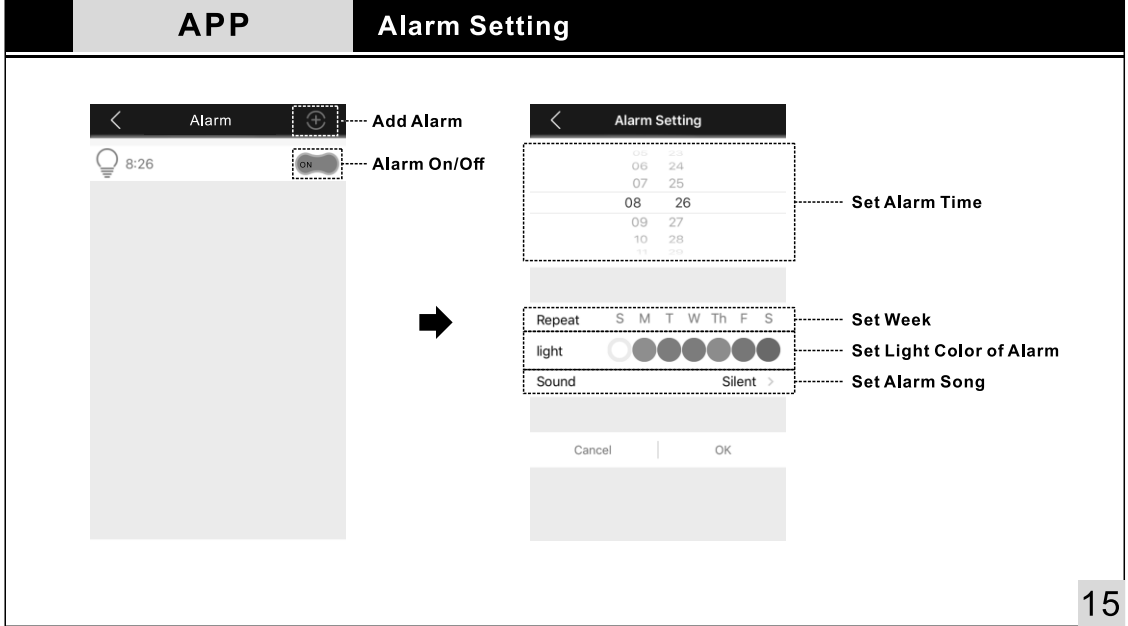
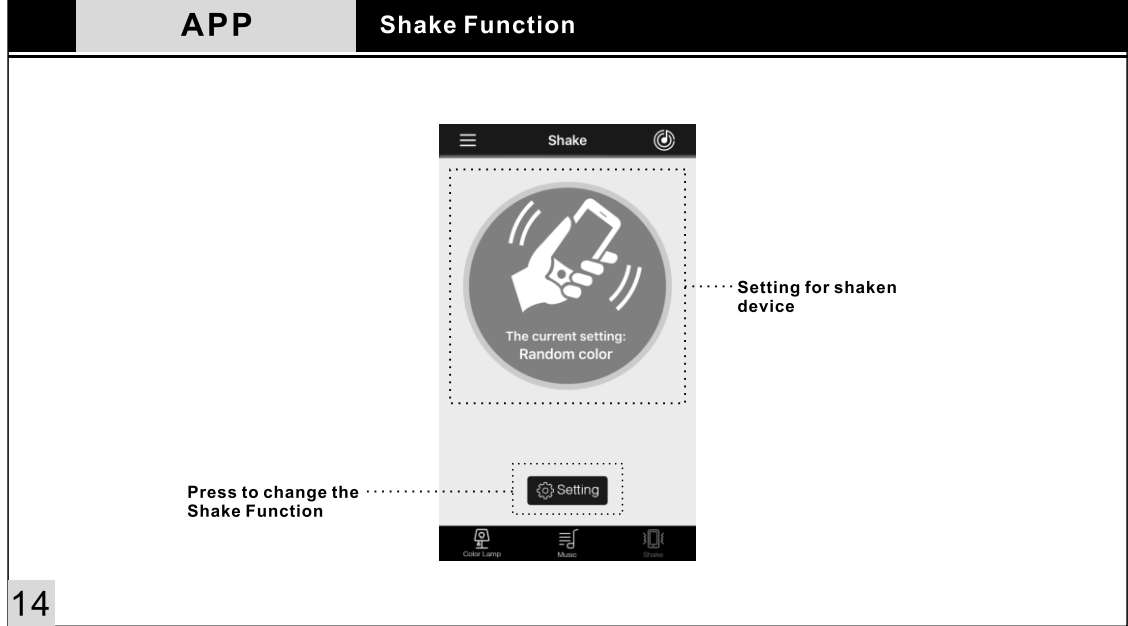
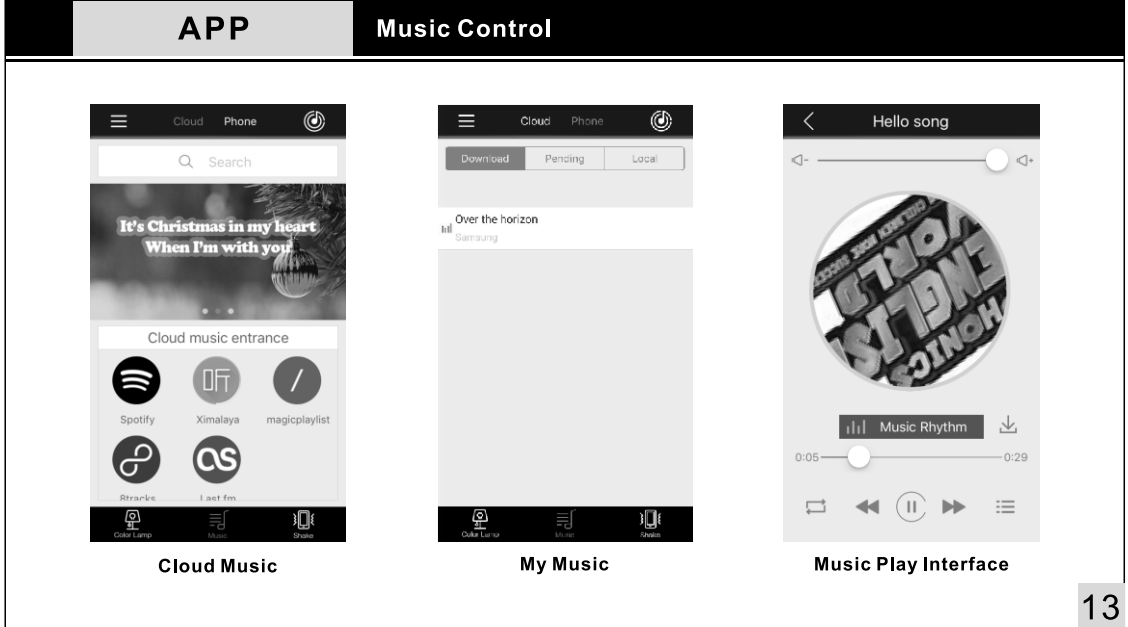
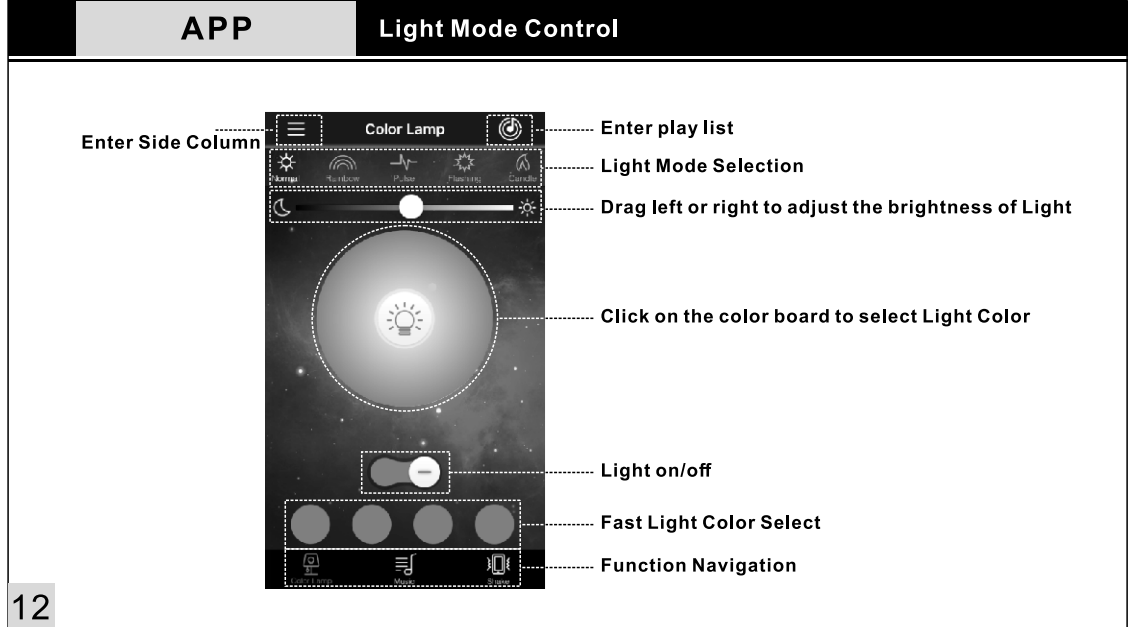
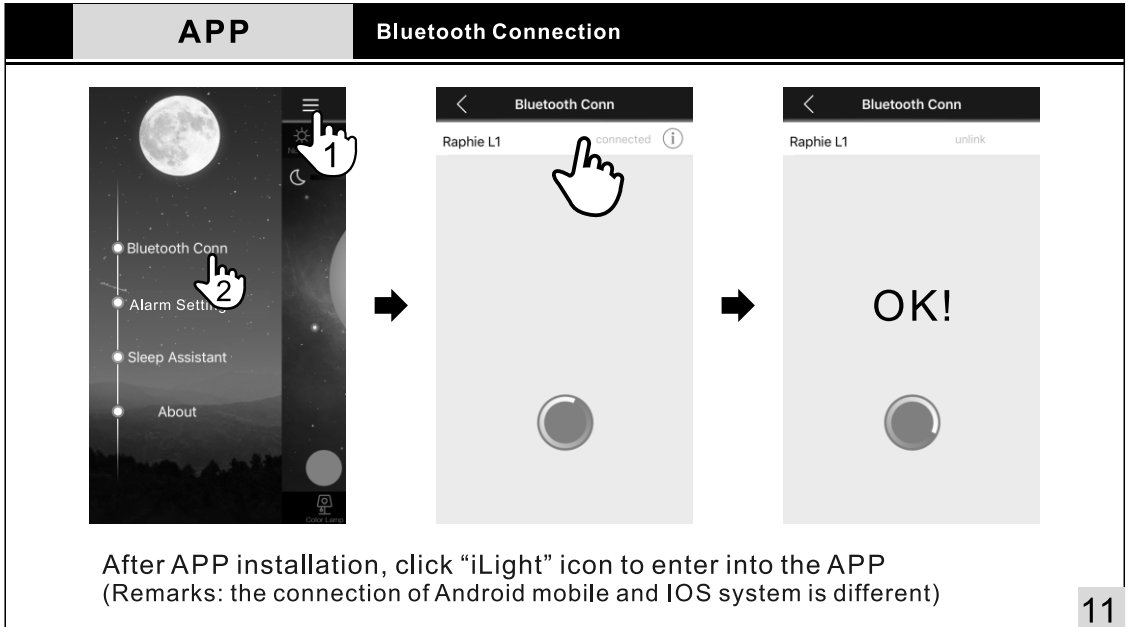
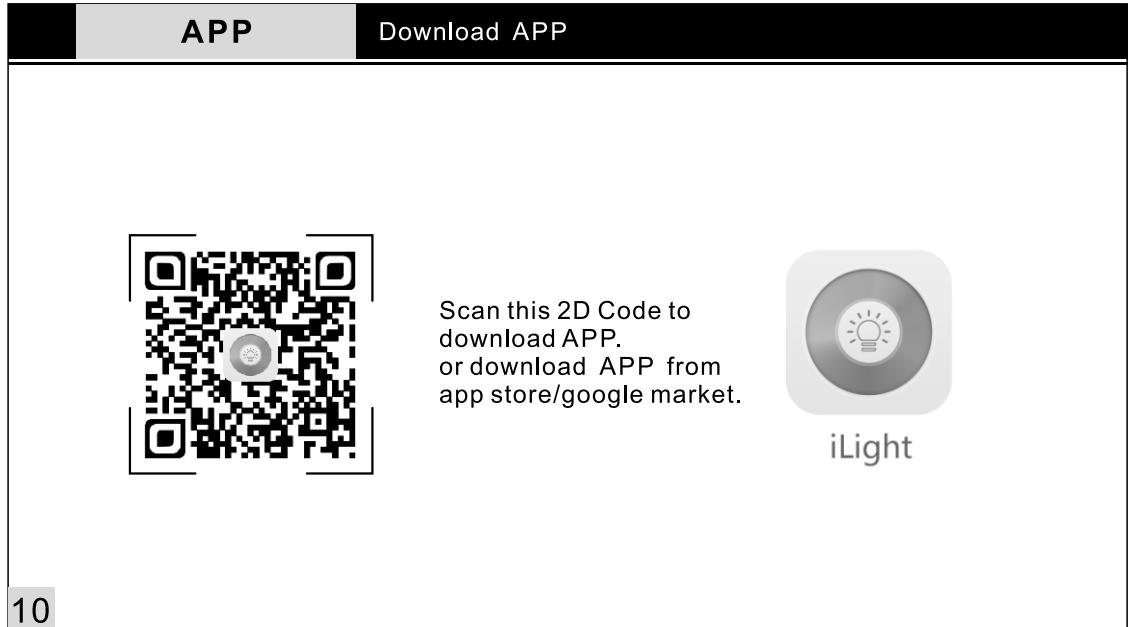
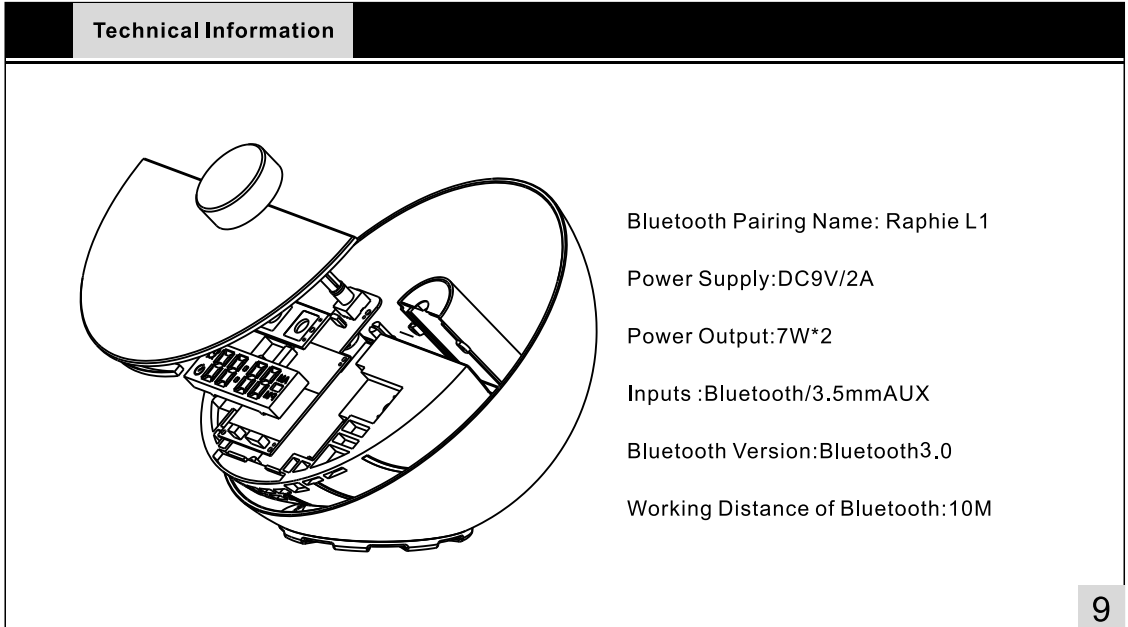
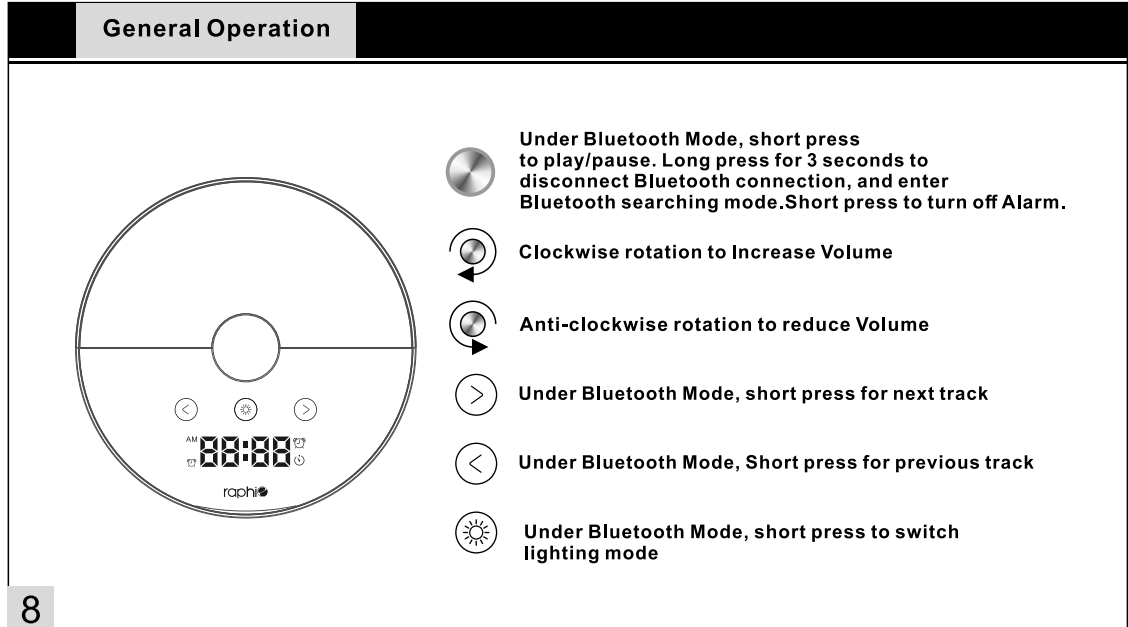
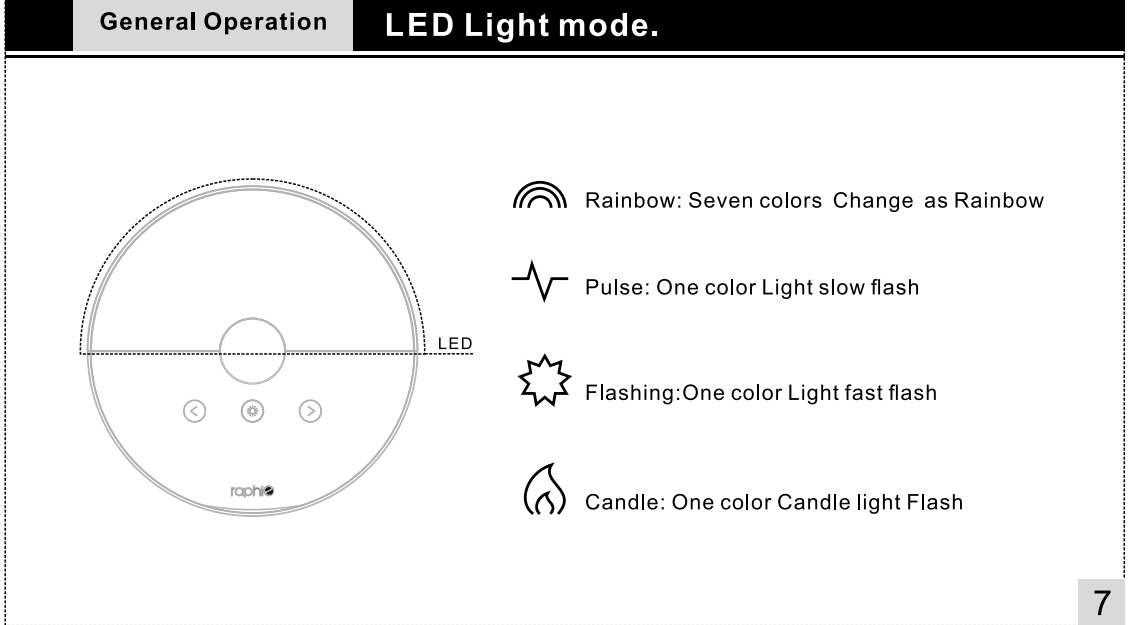
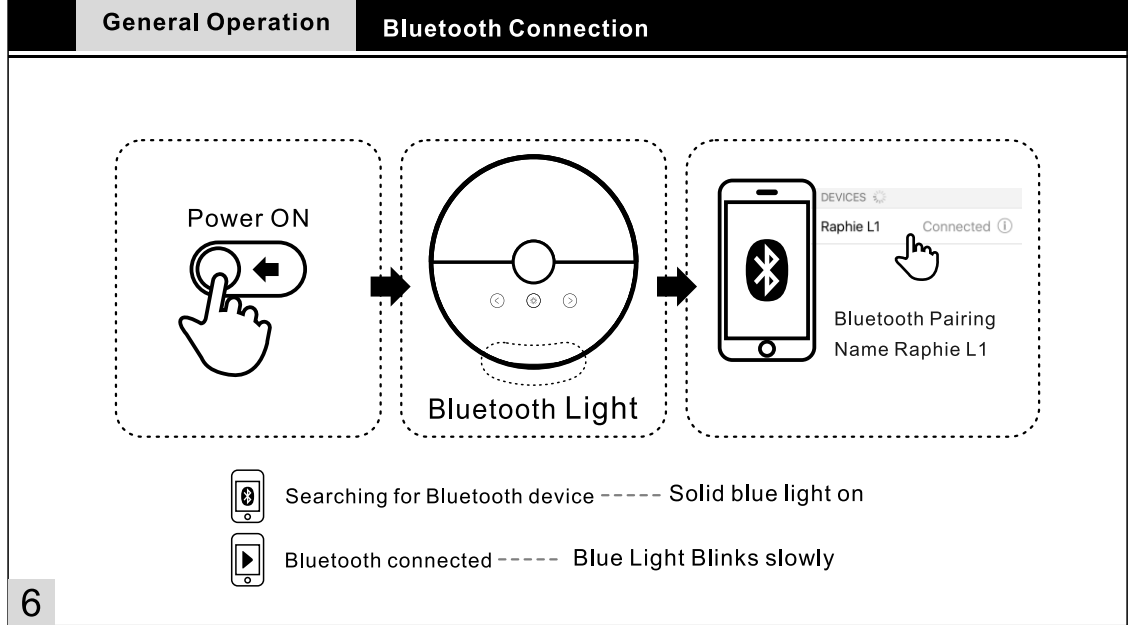
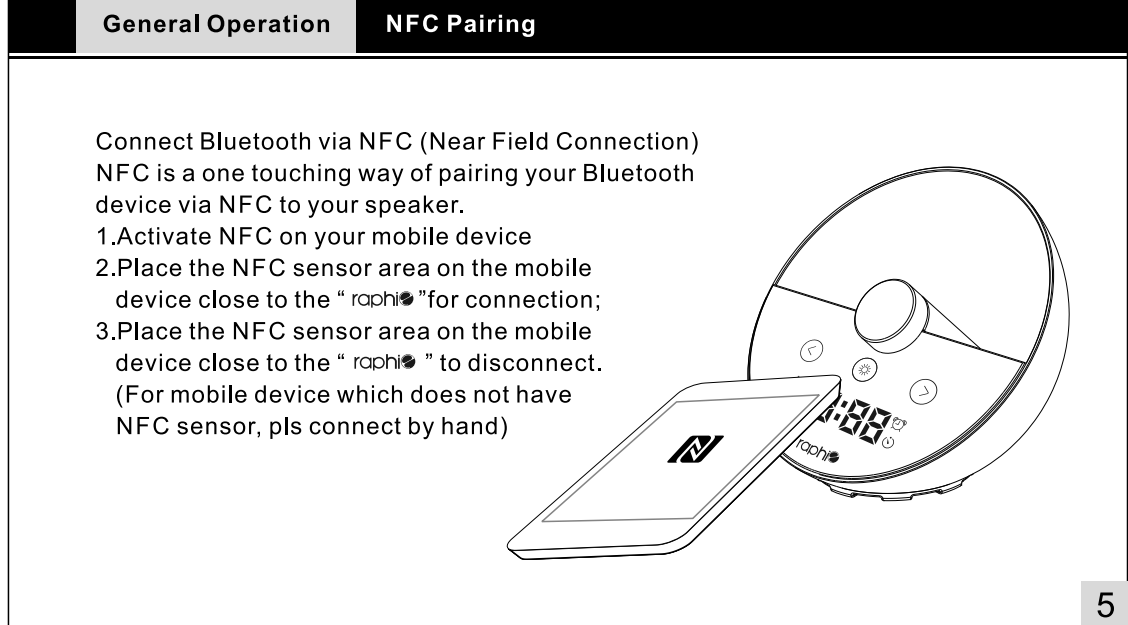
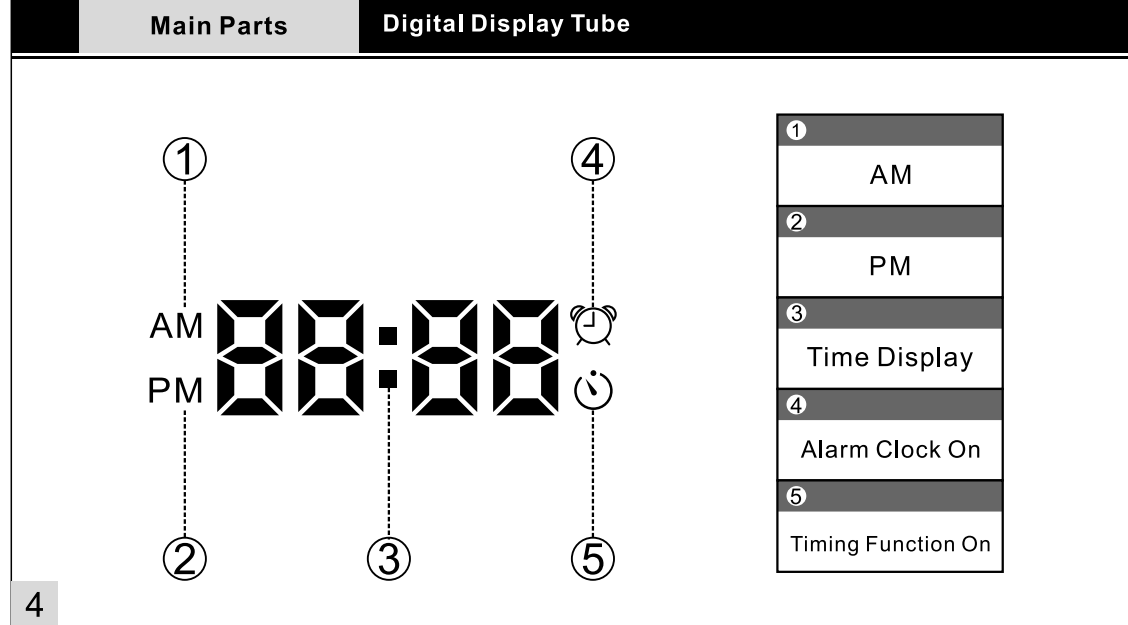
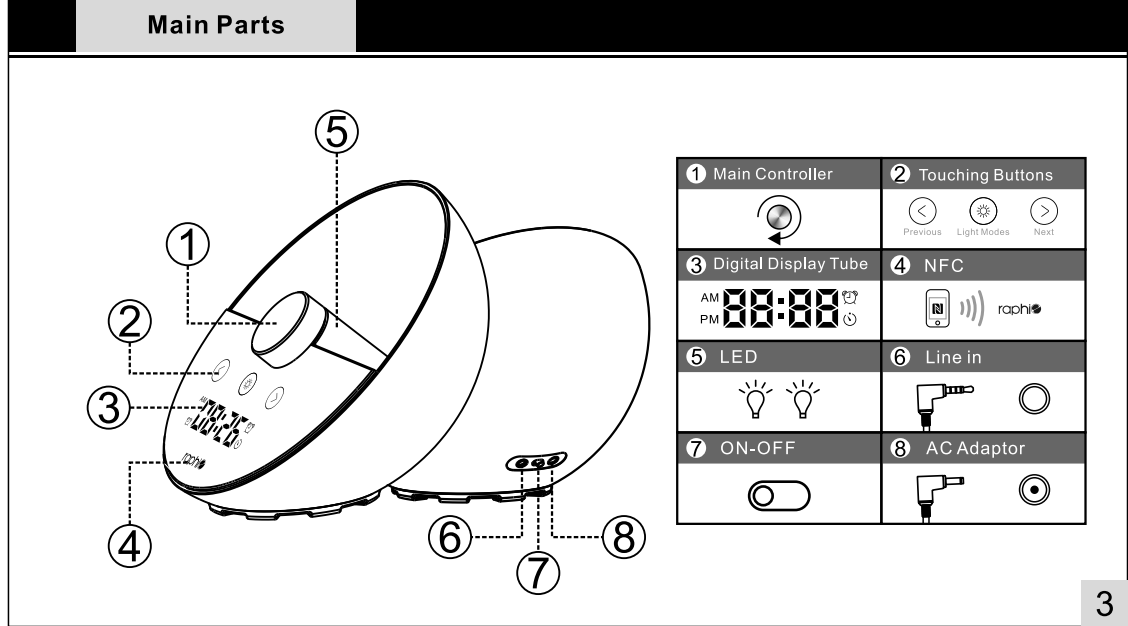
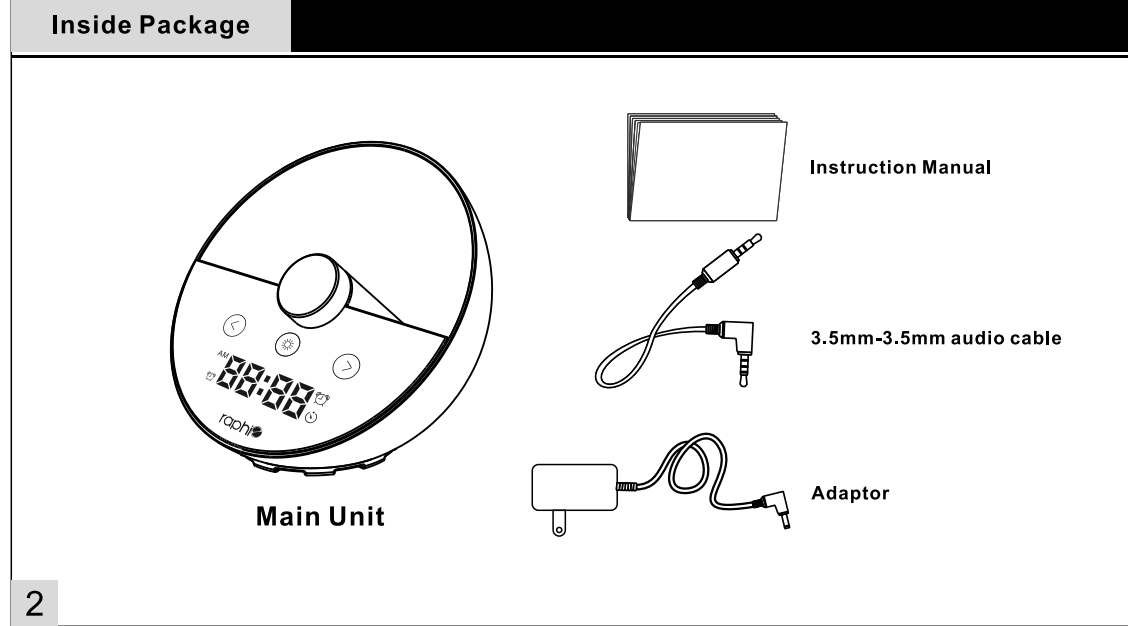
Lighting music into your life



Product Features	1
Inside Package	2
Main Parts	3-4
General Operation	5-8
Technical Information	9
APP	10-16
Safety Warnings	17

Product Features

Thank you for purchasing LightBox.
Before using your LightBox, please read the user's manual and follow the instructions.
LightBox is an excellent smart Bluetooth home audio, designed for bedside (highly recommended), or desktop or living room audio entertainment. The high end stylish aluminum housing with half-moon multi lighting mode make a pleasant compliment to modern home decor. Equipped with dual Hi-Fi level full range drivers supported by a professional bass radiator and sophisticated designed Digital Audio Processor, LightBox delivers awesome audio.
The multi-functionalities of LightBox makes a pleasant surprise to your daily life, it can be used as a clock with alarming function, or a multi-mode moody light. The specifically designed APP can control LightBox from your mobile device which offers more fun for using LightBox.



Safety Warnings

1. Read Instructions-all the safety and operating instructions must be read and followed before the product is operated.
2. Keep and operate the unit in room temperature.
3. Keep the unit away from corrosive substance, liquid or liquid splash and heat source.
4. Keep the unit out of the reach of Children.
5. Do not press the passive radiators to avoid damage, do not touch the radiator during operation.
6. Do not keep or use the unit under high temperature.
7. Do not put any subject on the unit.
8. Refer to qualified service personnel only.
9. Do not listen under high volume for long time to avoid damage to your hearing.
10. Do not abandon or put the unit into fire or any flame source to avoid accident.

FCC Statement

This equipment has been tested and found to comply with the limits for a Class B digital device, pursuant to Part 15 of the FCC Rules. These limits are designed to provide reasonable protection against harmful interference in a residential installation. This equipment generates uses and can radiate radio frequency energy and, if not installed and used in accordance with the instructions, may cause harmful interference to radio communications. However, there is no guarantee that interference will not occur in a particular installation. If this equipment does cause harmful interference to radio or television reception, which can be determined by turning the equipment off and on, the user is encouraged to try to correct the interference by one or more of the following measures:

- Reorient or relocate the receiving antenna.
- Increase the separation between the equipment and receiver.
- Connect the equipment into an outlet on a circuit different from that to which the receiver is connected.
- Consult the dealer or an experienced radio/TV technician for help.

This device complies with part 15 of the FCC Rules. Operation is subject to the following two conditions:(1) This device may not cause harmful interference, and (2) this device must accept any interference received, including interference that may cause undesired operation.

Changes or modifications not expressly approved by the party responsible for compliance could void the user's authority to operate the equipment.