

# Cloud Camera User Manual



## 1. Introduction

IP01 Cloud Camera is designed for middle, small enterprise & normal family use and it can monitor your environment in 24 hours every day. Built-in IR LED lighting provides high-definition image when it is under night time. It supports Wireless connection and it is convenient to setup & operate.

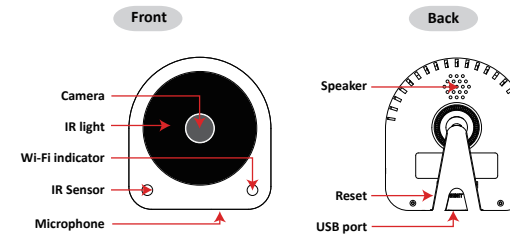
- 802.11n Wireless Standard;
- Motion & sound detection;
- Wireless connection and no need for network wire connection;
- High quality level 720P CMOS sensor;
- Send snapshot or video to cloud server;
- Built-in IR light enables high definition image during night time environment.

## 2. Product specifications

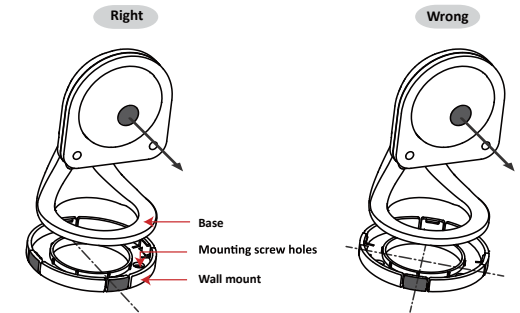
Dimensions	124 X 80 X 35mm
Weight	208 g
Audio	Linear input/output two-way voice intercom Audio compression PCM or ADPCM
Video compression	H.264
Working frequency	50Hz / 60Hz
Video Format	720p / 512kbps , WVGA / 256kbps, WQVGA / 128kbps
Exposure balance	Automatic
White balance	Automatic
Infrared mode	Automatic
Night vision	8 infrared lights, infrared irradiation distance: 3-4meters
Supported protocol	TCP/IP

Wireless standard	WIFI(IEEE802.11b/g/n)
Support IP addresses	Dynamic IP are supported
Alarm notification	Apps notification
Operating temperature	0° ~ 40°C
Operating humidity	10% ~ 85% (non-condensing)
Storage temperature	-10°C ~ 60°
Storage humidity	10% ~ 85%(non-condensing)
Operation system	Microsoft Windows 2000/XP, Vista, Windows7, Windows8, Mac OS, Linux
Alarm detection	Motion detection support Noise Detection

## 3. Introduction on appearance

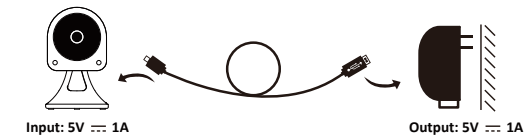


## 4. Ways to assemble wall mount



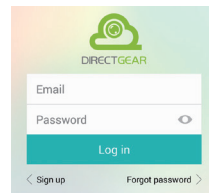
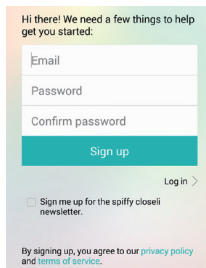
## 5. Before setup

- Connect your mobile to your Wi-Fi router
- Connect the USB cable to the IP camera and the USB power adaptor, plug in the power adaptor into the power socket
- Wait for around 30 second for device startup, there is a flash green light at the right on the IP camera



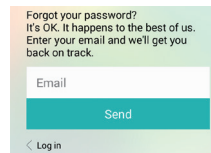
## 6. Start up and register

- Click the "DirectGear" on the screen
- You will see the "DIRECTGEAR" logo shown
- The first time you start, the Sign up screen will show



## 8. Forgot password

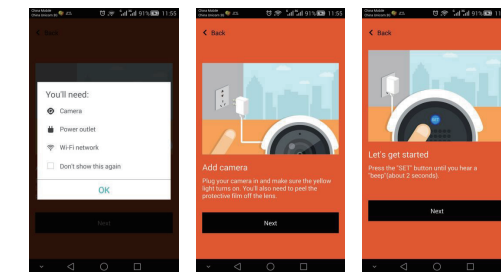
- If forgot the password, select the lower right corner "Forgot password" at the "Log in"



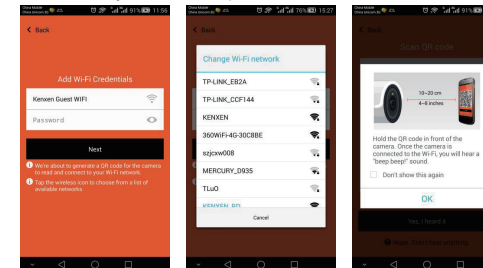
- Type in the e-mail address
- Click "Send" and system will send an e-mail to your mailbox to reset your password

## 9. Add camera

- After login, the first screen will show which said "Your account is lonely. It needs a camera. Add on by tapping below."
- Click the "Add camera"
- The add camera welcome screen will show

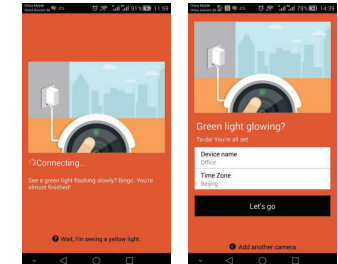


- You need your mobile connect to the same Wi-Fi network. Then click "OK"
- Follow the instruction on the screen, then click "Next"
- Press the "Reset" button at the back of the IP camera for at least two seconds until you hear a "beep" sound. Then click "Next" on the screen



- It will prompt to select the Wi-Fi network and input the password. Press "Next" when finished.
- Read the instruction on the screen. It asks you hold the mobile in front of the camera between 10cm~20cm after click the "OK".

- It will scan the QR code on the mobile screen. Usually take 2~5 seconds. After you hear the "beep beep" sound, you can click the "Yes, I heard it" button.
- It will automatic configure the IP camera, it need takes around 20 to 30 seconds.



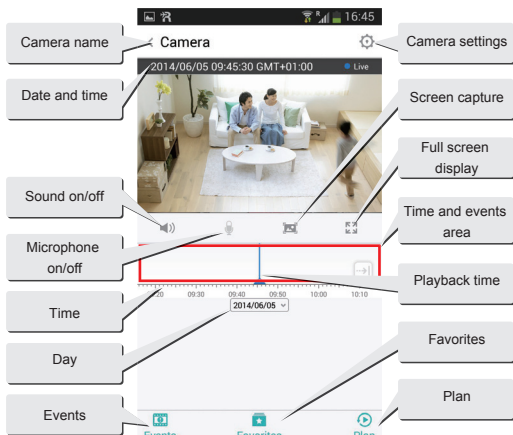
- After finished, it will show two fields which you can change the device name and time zone. Click "Let's go" after finish modify. Now the camera is ready.

## 7. The login

- The first time login, it prompt for e-mail address and password
- Click "Log in" after finish type in

## 10. My Cameras (main screen)

- After add the camera, the main screen will appear a camera screen.
- If you can't find it, you can slide the screen down to refresh the cameras in your account. And you can also change the display preview window format.
- Press the upper left corner the "Left arrow" button, a sub menu appears.
  - My Cameras: the main screen for select the cameras which register in this account
  - Account: change e-mail address, password enable/disable newsletters and log out
  - About: Information of current version, legal notice and license agreement
- Click the camera picture to view the camera streaming as below.



### ii. Detection sensitivity

- Sound sensitivity: you can select Bam, Default and Whisper
- Motion sensitivity: you can select Crash, Default and Tiptoe

### iii. Video quality: User can choose High, Medium and Low video quality

### iv. Camera microphone:

- Camera microphone: Enable/disable sound to be detected and recorded
- Turn camera microphone off at: Scheduling the microphone on/off time

### f) Hardware

- Rotate image 180o: Enable to upside down the video screen

### g) Details

- Wi-Fi network: You can change connect to another Wi-Fi network

- Camera details: Device name, Time zone, Firmware, Device ID and Mac address

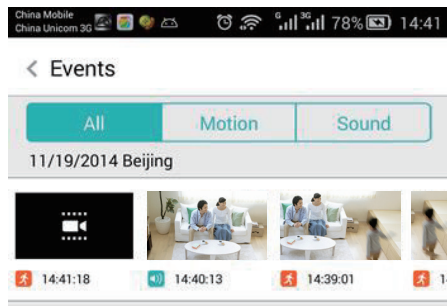
### h) Remove Camera

This will remove the camera from your account. Warning: (All associated recordings will be deleted and non-reversible). If you want add this camera to another account, you must remove the camera.

## 12. Account

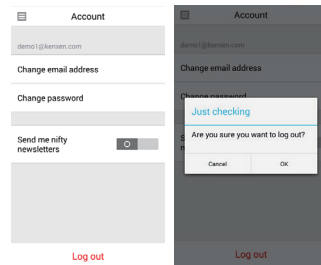
- Change email address: You can change the login e-mail address to a new one
- Change password: You can change your password
- Log out: log out this account and back to the log in screen

- Screen capture: It will store at the "DirectGear" folder in your mobile
- Microphone on/off: After enable it, an orange microphone icon will appear. Click it and speak on the mobile, the IP camera speaker will have your voice.
- Playback (cloud service only): You can slide the "Playback" time to the left and it will playback the previous video from the cloud service. For more easy to choose the time for playback the video, you can click the left hand side "zoom" to enlarge time bar. To view real time video, click the "right arrow" button on the time bar.
- Events (cloud service only): Click on it and you can choose the previous recorded video for playback. It will separate as motion and sound events.



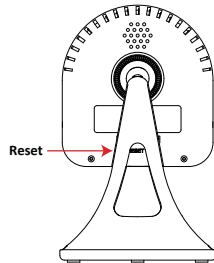
### v. Favorites (cloud service only):

- Choose and playback the saved video from the cloud service
- Select a start time at time and events area
- Click the cut icon.
- The save to favorites screen will show



## 13. Reset the IP camera

- If your IP camera change to another Wi-Fi network, you should reset the IP camera
- To reset it, use a pencil or pen to press the "Reset button" at the lower left corner at the back of the IP camera. Press until a "beep" sound (around 2 seconds). The flash green light will blank. Wait until it flash again and repeat the "Add camera" steps.



- You can change the title name and duration.
  - Click upper right corner "Save" to complete
  - It will appear at the Favorites folder, to playback, just click it.
  - To download the video to your mobile, click "Save" in the playback screen of the video
- Plan (cloud service only): Your account existing cloud service plan

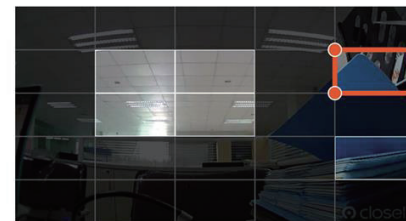
## 11. Camera settings (IP camera needs to connected state)

- Preferences of the camera
  - Camera name: users can change the name or choose a default name
  - Location: choose the Greenwich mean time
- Camera
  - Camera: enable or disable the camera
  - Camera off at: Scheduling the camera on/off time
- Cloud recording (need enable the cloud service)
  - Recording: enable or disable the cloud recording
  - Recording off at: Scheduling the recording on/off time
- Services
  - Closeli plan: Your cloud service plan status. If expired, you can select the plan here and it will forward to the online billing website
- General settings
  - Notification settings
    - Motion detection: Enable/disable motion detection
    - Motion area settings: Drag to set an area in the grid to detect motion



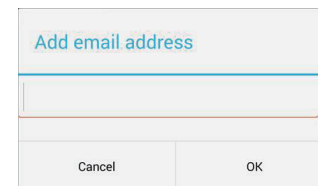
## Motion detection area Done

Drag to set an area in the grid to detect motion.



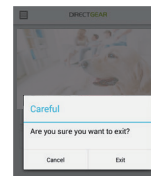
## Delete selected area

- Sound detection: Enable/disable sound detection
- Stop Notifications: Add schedule for alerts off
- Email notifications: Send notifications to email address



## 14. Exit

To exit the app, click the mobile "Back" button and it will ask you "Are you sure you want to exit?" Select "Exit" to quit.



## 15. Package Contents

IP Cloud Camera	USB cable	A/C adaptor
Wall mount	User manual	Quick install guide

This device complies with Part 15 of the FCC Rules. Operation is subject to the following two conditions:

- (1) this device may not cause harmful interference, and
- (2) this device must accept any interference received, including interference that may cause undesired operation.

**Warning:** Changes or modifications to this unit not expressly approved by the party responsible for compliance could void the user's authority to operate the equipment.

**NOTE:** This equipment has been tested and found to comply with the limits for a Class B digital device, pursuant to Part 15 of the FCC Rules. These limits are designed to provide reasonable protection against harmful interference in a residential installation. This equipment generates, uses and can radiate radio frequency energy and, if not installed and used in accordance with the instructions, may cause harmful interference to radio communications.

However, there is no guarantee that interference will not occur in a particular installation. If this equipment does cause harmful interference to radio or television reception, which can be determined by turning the equipment off and on, the user is encouraged to try to correct the interference by one or more of the following measures:

Reorient or relocate the receiving antenna.  
Increase the separation between the equipment and receiver.  
Connect the equipment into an outlet on a circuit different from that to which the receiver is connected.  
Consult the dealer or an experienced radio/TV technician for help.

For MPE (Fixed or Mobile Device)

"FCC RF Radiation Exposure Statement Caution: To maintain compliance with the FCC's RF exposure guidelines, place the product at least 20cm from nearby persons."