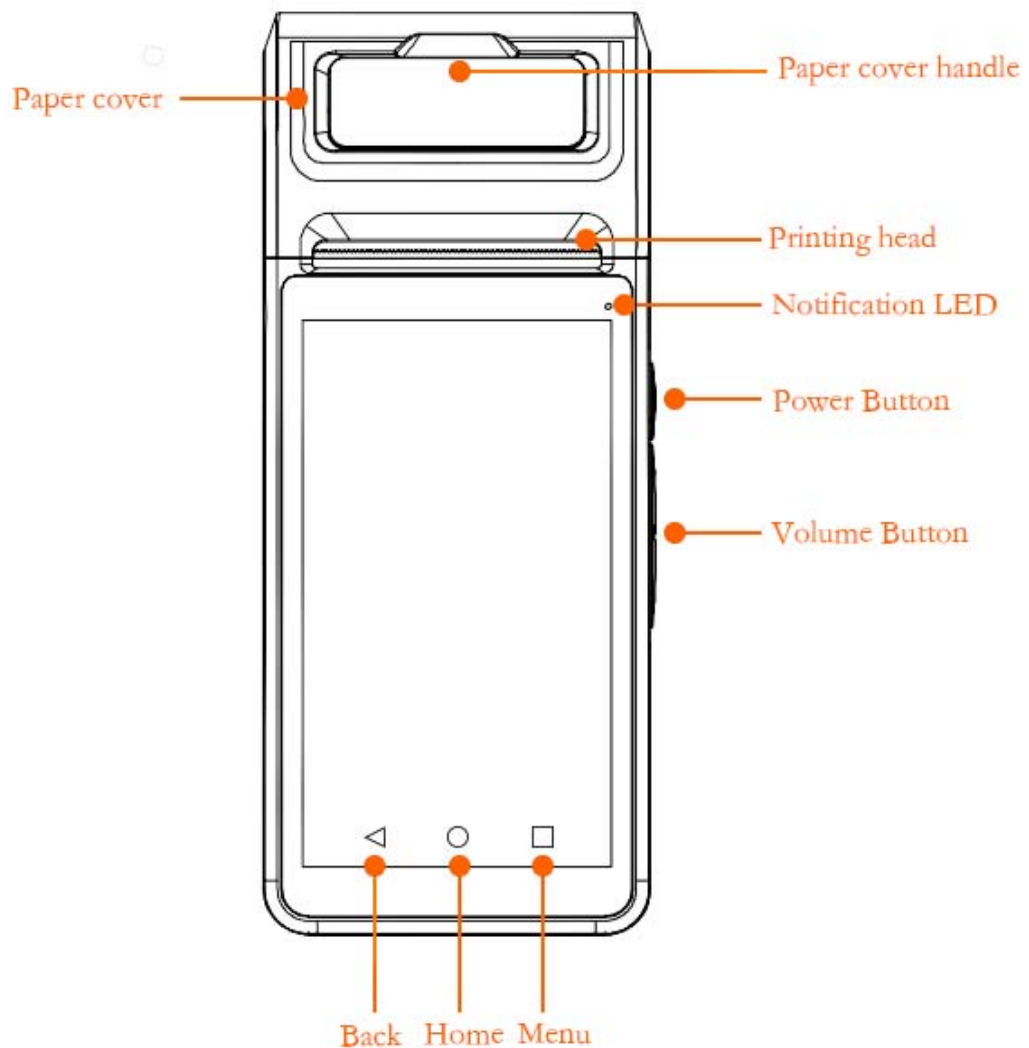


XPOS-I100

Smart handheld printer

User guide



Power Button

- *Short press:* Turn on/off the screen when power on.
- *Long press:* Hold few seconds to switch the power on. When power is on, hold for few seconds to show the Option Menu including 'Power off', 'Airplane Mode', 'Settings', 'Lock Now', and 'Reboot'.

VOLUME Button

- Adjusting the volume.
- Can be defined as quick launch button for applications which had been installed(Settings -> Volume key Customization).

BACK

Back to the last scene/application.

HOME

Back to home screen.

MENU

- Show recently opened apps.
- Tap on the app to open the app, or slide the app to left/right to close it.

Printing head

The thermal printing head.

Notification LED

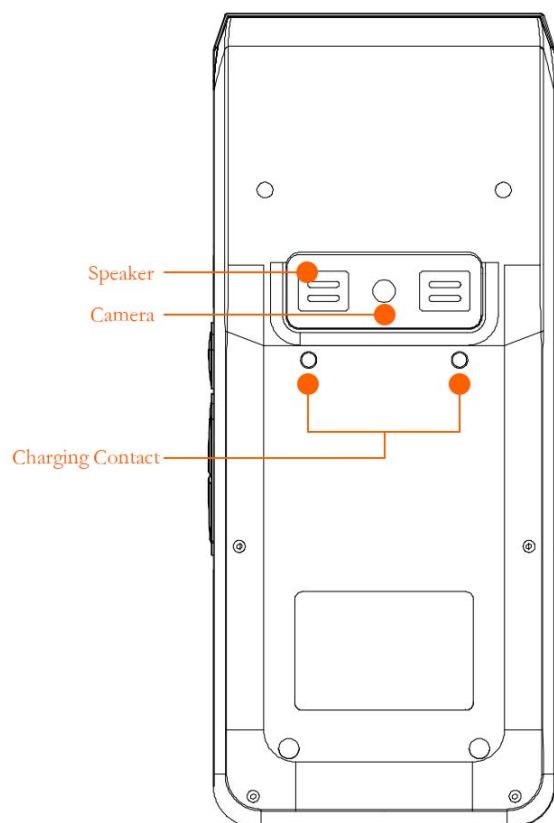
- Solid green light when XPOS-I100 is charging and the battery is fully charged.
- Flashing green light when you have a pending notification.
- Solid red light when the battery is being charged.

Paper cover handle

Open the paper cover.

Paper cover

Open this cover to install/replace the roll paper.



Speaker

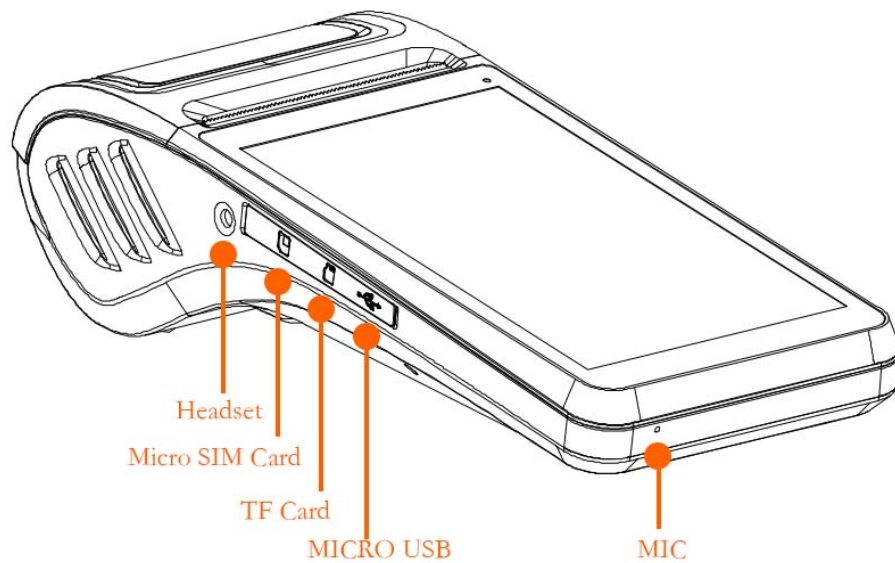
- Sound comes out from here when playing music or movie.
- The sound that prompts the Printer's status, like run out of paper or overheat, also comes out from here.

Camera

Scan QR code or bar code.

Charging Contact

Use to charge with the Charging base (keep away from water, metal object and other electrified equipment).



Headset

The headset jack.

Micro SIM Card

The Micro SIM Card slot.

Note: when inserting or removing the microSIM card, please make sure the XPOS-I 100 is power off, otherwise it may cause damage to the hardware.

To insert the microSIM card, firstly open the soft cover, then insert the sim card into the slot that the picture shows with its metallic side UP and the unfilled corner side OUT, finally close the soft cover.

To remove the microSIM card, firstly open the soft cover, then push the card in to eject it from its slot, slide the sim card out and finally close the cover.

TF Card

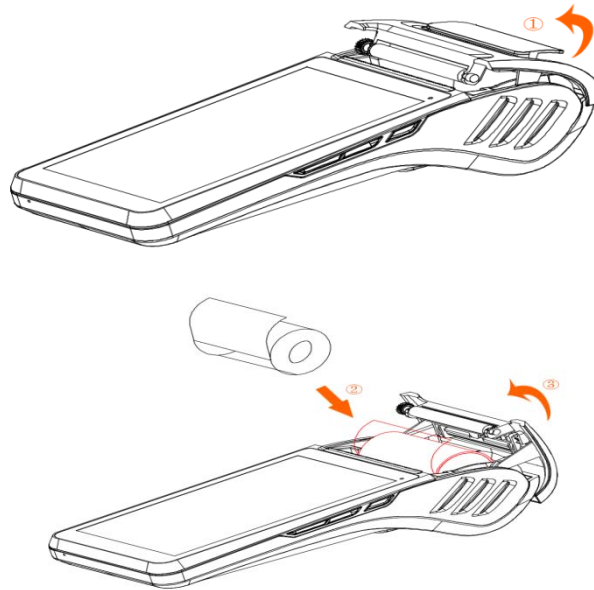
TF Card slot.

MICRO USB

USB connector, it can be used for charging or connecting to PC.

MIC

Microphone, use for speech input.



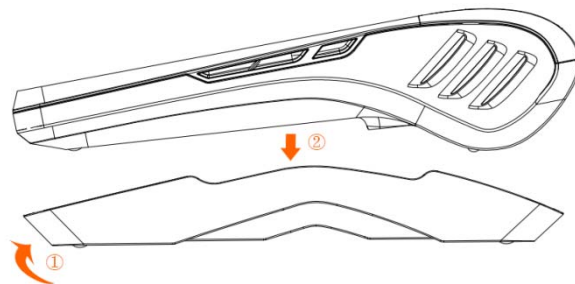
schematic drawing of installing roll paper

Installing the roll paper:

- Open the paper cover with the handle(see ①) .
- Remove the used roll paper core if any, then install the roll paper in the correct direction according to the Schematic drawing, remember to pull out some paper outside the cover (see ②).
- Close the paper cover back, finish installing roll paper(see ③);

Note: XPOS-I 100 only support 58mm roll paper width settings: $57\pm 0.5\text{mm} * \text{Ø} 40\text{mm}$.

If the paper is blank while printing, please check whether the roll paper is reversed.



Charge:

- XPOS-I 100 support charging with Charging Base or USB connector(No difference between these two method).
- While charge with the Charging Base, insert the Power Adapter's USB cable into the Micro USB connector in the Charging Base(see ①), then put XPOS-I 100 on the Charging Base(see ②).
- While charge with USB connector directly, just insert the Power Adapter's USB cable into the Micro USB connector in the XPOS_I 100.
- The Battery icon transform to Charging status when charging, and the Notification LED solid light.
- If XPOS-I 100 cannot enter charging status, please check if is correctly connected, or if the Charging contact is polluted.

BATTERY CAUTION

- XPOS-I 100 use a 3.8 v/6000mAh built-in lithium battery, please do not disassemble by yourself.
- To protect the battery, it is recommended to charge in time when battery level is low, do not let the battery run out.

Product Specifications

Product Model: XPOS-I100

Operating System: Android 7.0

CPU: frequency 1.3GHz, 64 bit Quad Processor

RAM: 1GB

ROM: 8GB

Display: 5.5-inch IPS with 960X540 resolution

Touch Screen: capacitive multi touch screen

Camera: 5 mega-pixel with auto focus

Speaker: 1 watt single channel with 90 DB maximum volume(adjustable)

Headset: 3.5mmaudio interface, stereo headset is supported

Microphone: support

Support Band: GSM: B2/3/5/8

WCDMA: B1/2/5/8

LTE-FDD: B1/2/3/4/5/7/20

WIFI: IEEE 802.11 a/b/g/n(2.4G/5G)

Bluetooth: Bluetooth 4.1

GPS+AGPS: support

Power Button: switching on/off(quick launch camera by double click when in lock screen)

Volume +/- Button: adjust volume(can be customization to other function)

SIM Card: Micro SIM support

TF Card: Maximum support for 32GB

MICRO USB: USB 2.0 OTG, for charging or connect to PC

Printing method: Thermal line printing

Roll Paper Width: 58mm

Roll Paper Diameter: Maximum \varnothing 40mm

Print Speed: 50mm/s

Thermal head life: 50km

Working Temperature: 0°C~50°C, relative humidity 5%~90%

Storage Temperature: -20°C~70°C

Battery: 3.8V lithium battery, capacity 6000mAh

Power Supply: INPUT: AC100~240V/1.5A

OUTPUT: DC5V/2A

Overall dimensions: 205X86X54.5mm

In the Box

- XPOS-I 100 x1
- Charging base x1
- Power Adapter x1
- USB cable x1
- User Manual x1, Warranty Card x1, Product certificate x1
- 58mm roll paper x1
- _____

Safety Precautions

- Do not use in locations subject to high humidity or temperature. Excessive humidity and temperature may cause equipment damage, fire, or shock.
- Keep the equipment away from fire or water. This may cause fire or electric shock.
- Touch screen is fragile, please handle with care, avoid impacting or pressing.
- Shut down your equipment immediately if it produces smoke, a strange odor, or unusual noise. Continued use may lead to fire or electric shock.
- The manual cutter is sharp, please be carefully when you cut the roll paper manually.
- Do not expose the equipment to high dust levels environment, do not allow foreign matter to fall into the equipment. Penetration of foreign objects may lead to fire or shock.

Disclaimer

With the update of the product, some details described in this manual may not be in conformity with the actual product, please take the actual product as the standard. The company has reserved the final explanation rights to this manual.

The contents of this manual are subject to change without notice.

This product toxic and hazardous substance name and content identification form

Module Name	Hazardous Substance					
	Pb	Hg	Cd	Cr(VII)	PBB	PBDE
Circuit Modules	X	○	○	○	○	○
Printing Head	X	○	○	○	○	○

○: Indicates that the concentration of the hazardous substance in all homogeneous materials in the parts is below the relevant threshold of the SJ/T11363-2006 standard.

X: Indicates that the concentration of the hazardous substance in all homogeneous materials in the parts is above the relevant threshold of the SJ/T11363-2006 standard.

There has some hazardous substance marked as 'X' is because there is no mature alternative technology in the industry.

Product Warranty Card

Product Name: _____

Product Model: _____

Product Number: _____

Purchase Date: _____

Warranty Period: The warranty time is _____ days from the day when you have the invoice.

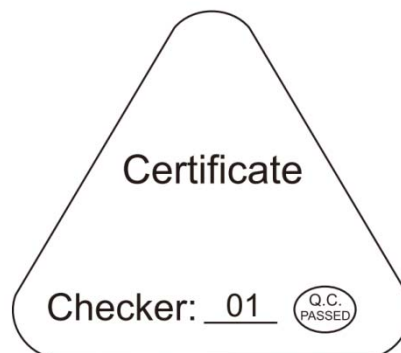
Free maintain won't be given under the following circumstance:

- The malfunction and damaged caused by unauthorized repairs and alteration.
- Incomplete product bar code or Fragile Sticker.
- Incomplete warranty card or there is any modification on the warranty card.
- The damage caused by not in accordance with the user manual operation.
- The damage caused by water or fall or other man-made factors.
- The damage caused by force majeure.
- Beyond the warranty period.

Telephone: _____

Company Address: _____

Qualification Certificate



Changes or modifications not expressly approved by the party responsible for compliance could void the user's authority to operate the equipment.

Note: This equipment has been tested and found to comply with the limits for a Class B digital device, pursuant to part 15 of the FCC Rules. These limits are designed to provide reasonable protection against harmful interference in a residential installation. This equipment generates, uses and can radiate radio frequency energy and, if not installed and used in accordance with the instructions, may cause harmful interference to radio communications. However, there is no guarantee that interference will not occur in a particular installation. If this equipment does cause harmful interference to radio or television reception, which can be determined by turning the equipment off and on, the user is encouraged to try to correct the interference by one or more of the following measures:

- Reorient or relocate the receiving antenna.
- Increase the separation between the equipment and receiver.
- Connect the equipment into an outlet on a circuit different from that to which the receiver is connected.
- Consult the dealer or an experienced radio/TV technician for help.

Caution: Any changes or modifications to this device not explicitly approved by manufacturer could void your authority to operate this equipment.

This device complies with part 15 of the FCC Rules. Operation is subject to the following two conditions: (1) This device may not cause harmful interference, and (2) this device must accept any interference received, including interference that may cause undesired operation.

Specific Absorption Rate (SAR) information:

This Smart Phone meets the government's requirements for exposure to radio waves. The guidelines are based on standards that were developed by independent scientific organizations through periodic and thorough evaluation of scientific studies. The standards include a substantial safety margin designed to assure the safety of all persons regardless of age or health.

FCC RF Exposure Information and Statement The SAR limit of USA (FCC) is 1.6 W/kg averaged over one gram of tissue. Device types: Smart handheld printer (FCC ID:) has also been tested against this SAR limit. The highest SAR value reported under this standard during product certification is 0.932W/kg when properly worn on the body. This device was tested for typical body-worn operations with the back of the Smart Phone kept 00mm from the body. To maintain compliance with FCC RF exposure requirements, use accessories that maintain a 00cm separation distance between the user's body and the back of the Tablet PC. The use of belt clips, holsters and similar accessories should not contain metallic components in its assembly. The use of accessories that do not satisfy these requirements may not comply with FCC RF exposure requirements, and should be avoided.



very high volume, prolonged listening to a mobile phone can damage your hearing.