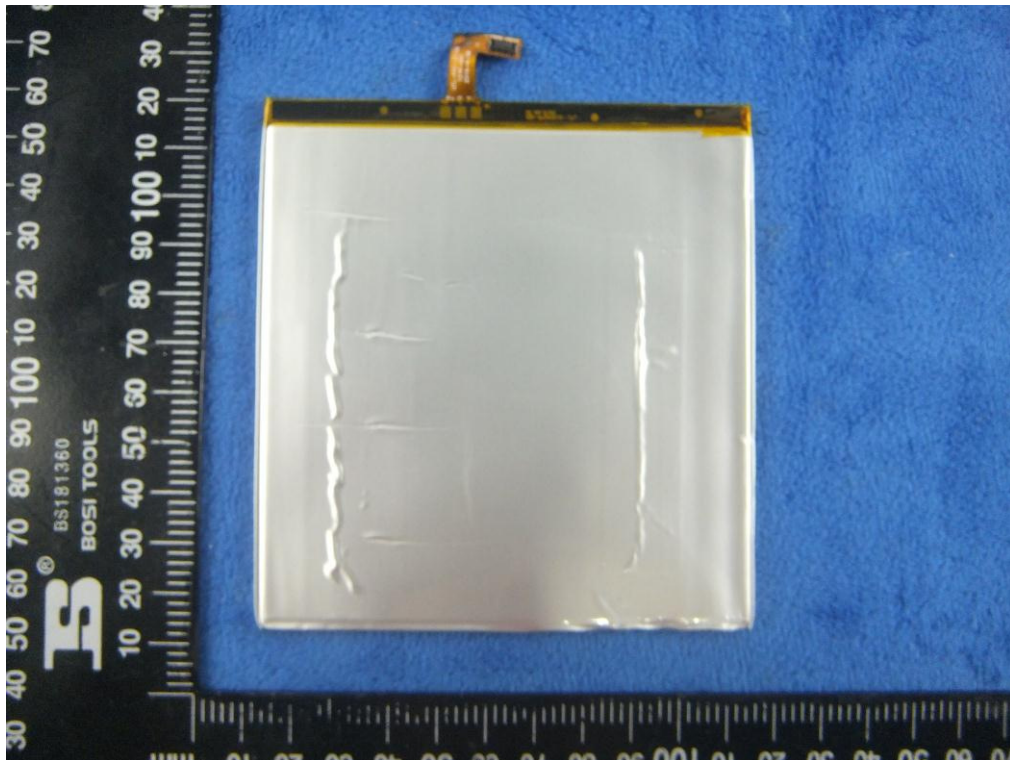


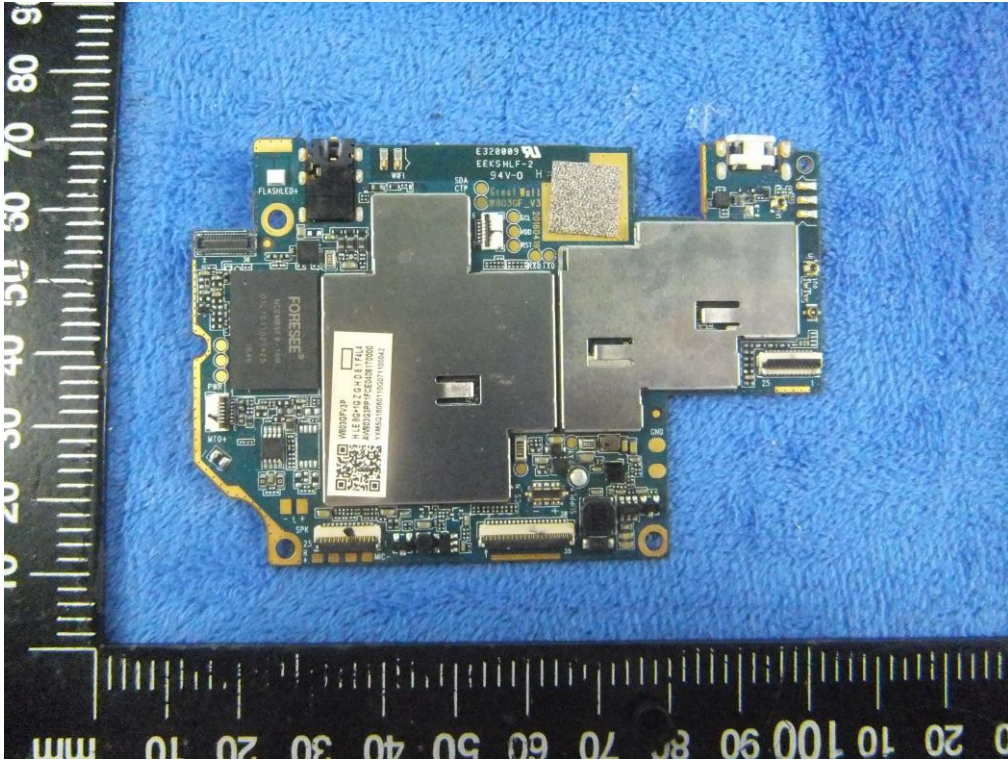
Battery - Front View



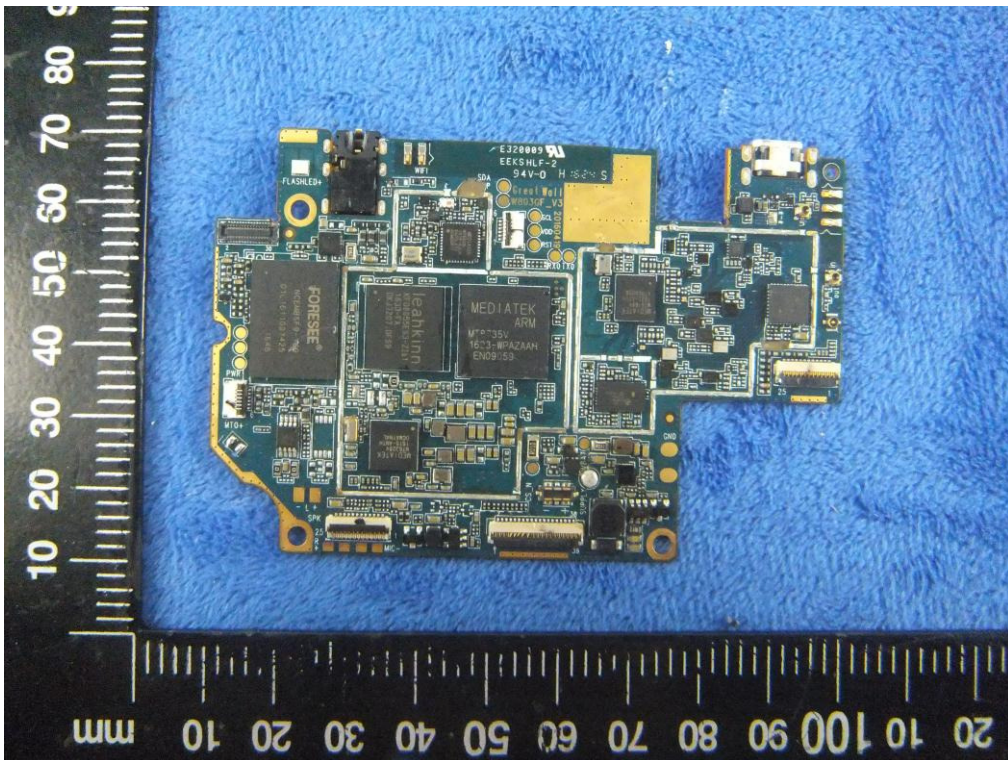
Battery - Rear View



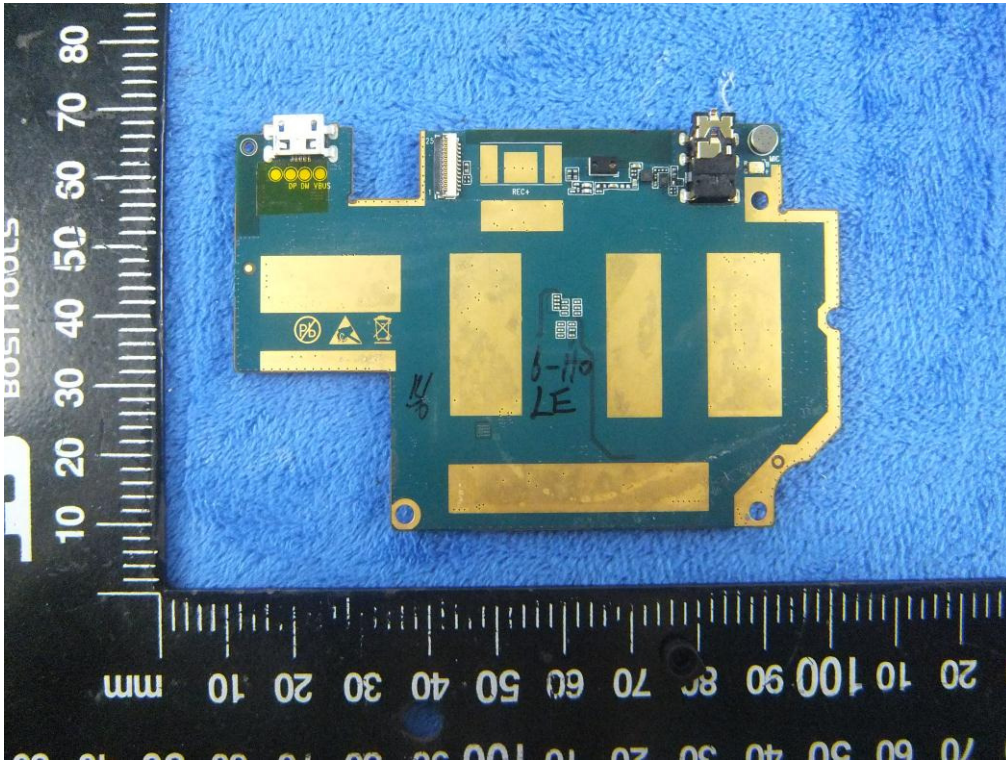
Mainboard with Shielding - Front View



Mainboard without Shielding - Front View



Mainboard – Rear View



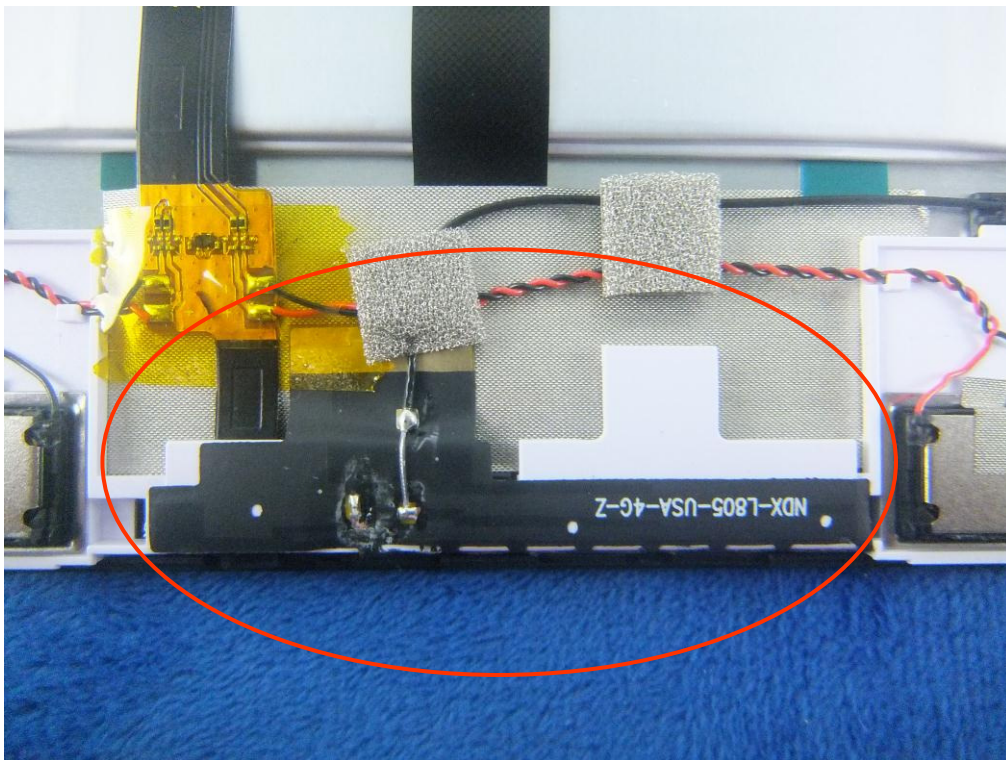
LCD – Front View



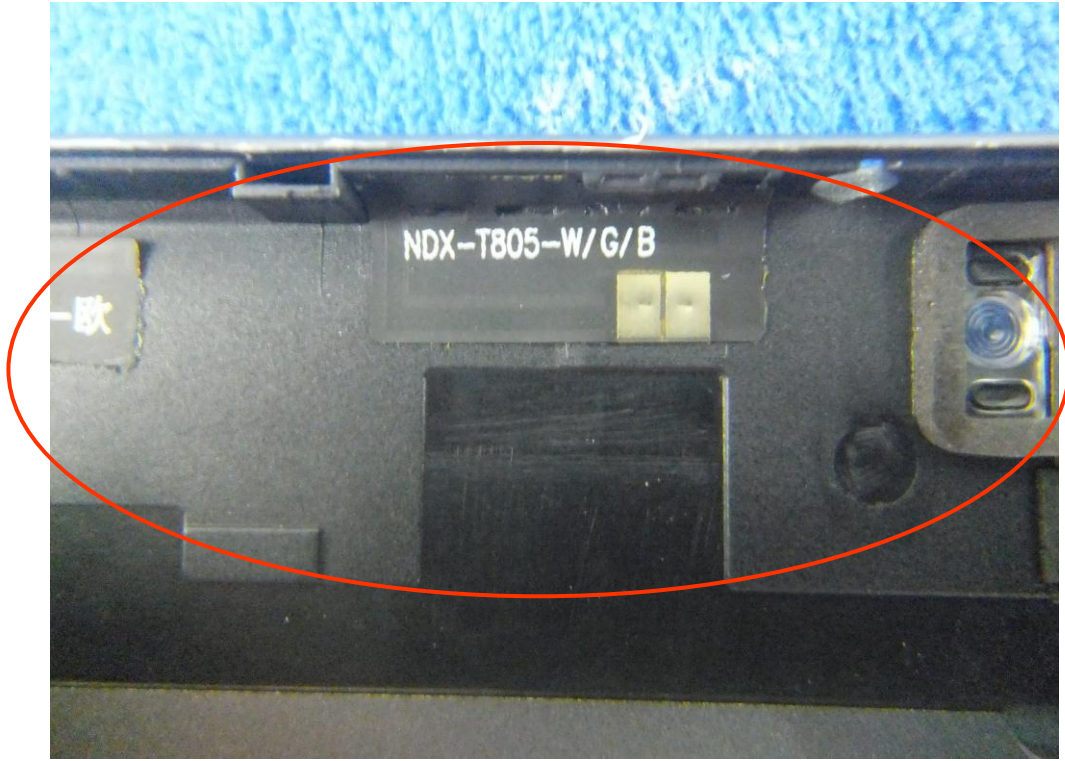
LCD – Rear View



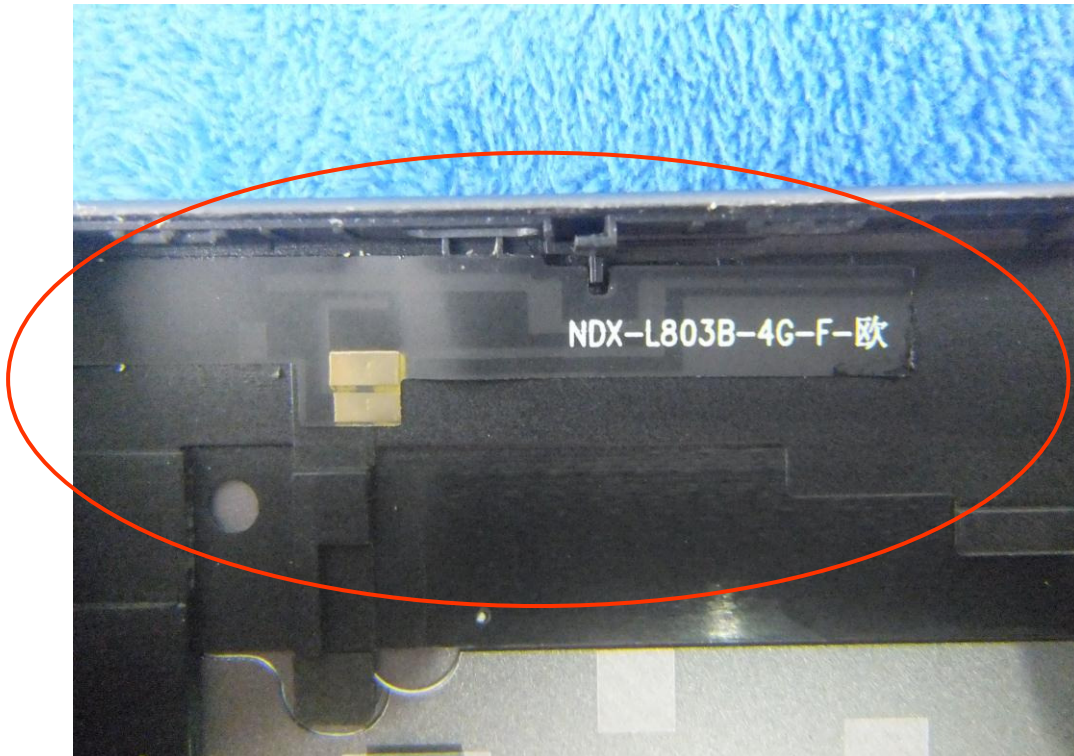
GSM/PCS/UMTS-FDD Antenna View



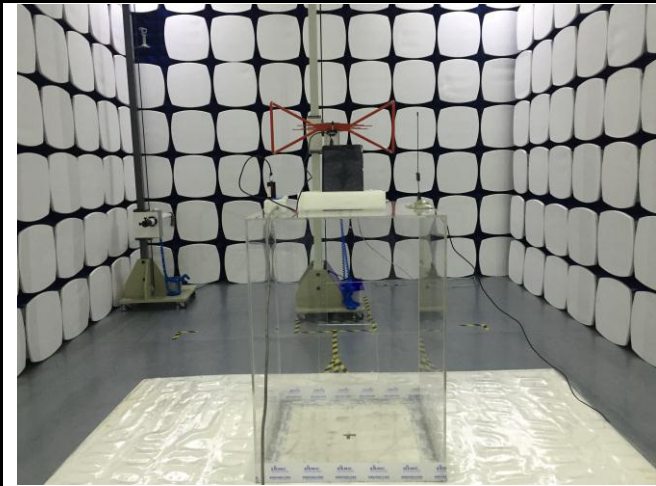
WIFI/BT/BLE - Antenna View



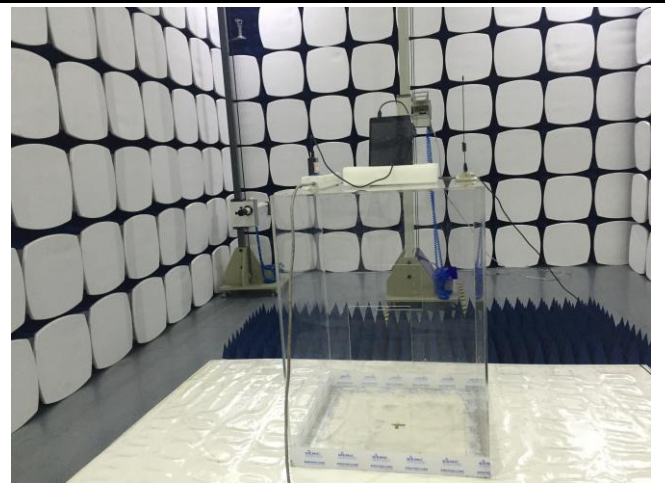
LTE - Antenna View



Annex B.iii. Photograph: Test Setup Photo



Radiated Spurious Emissions Test Setup Below 1GHz

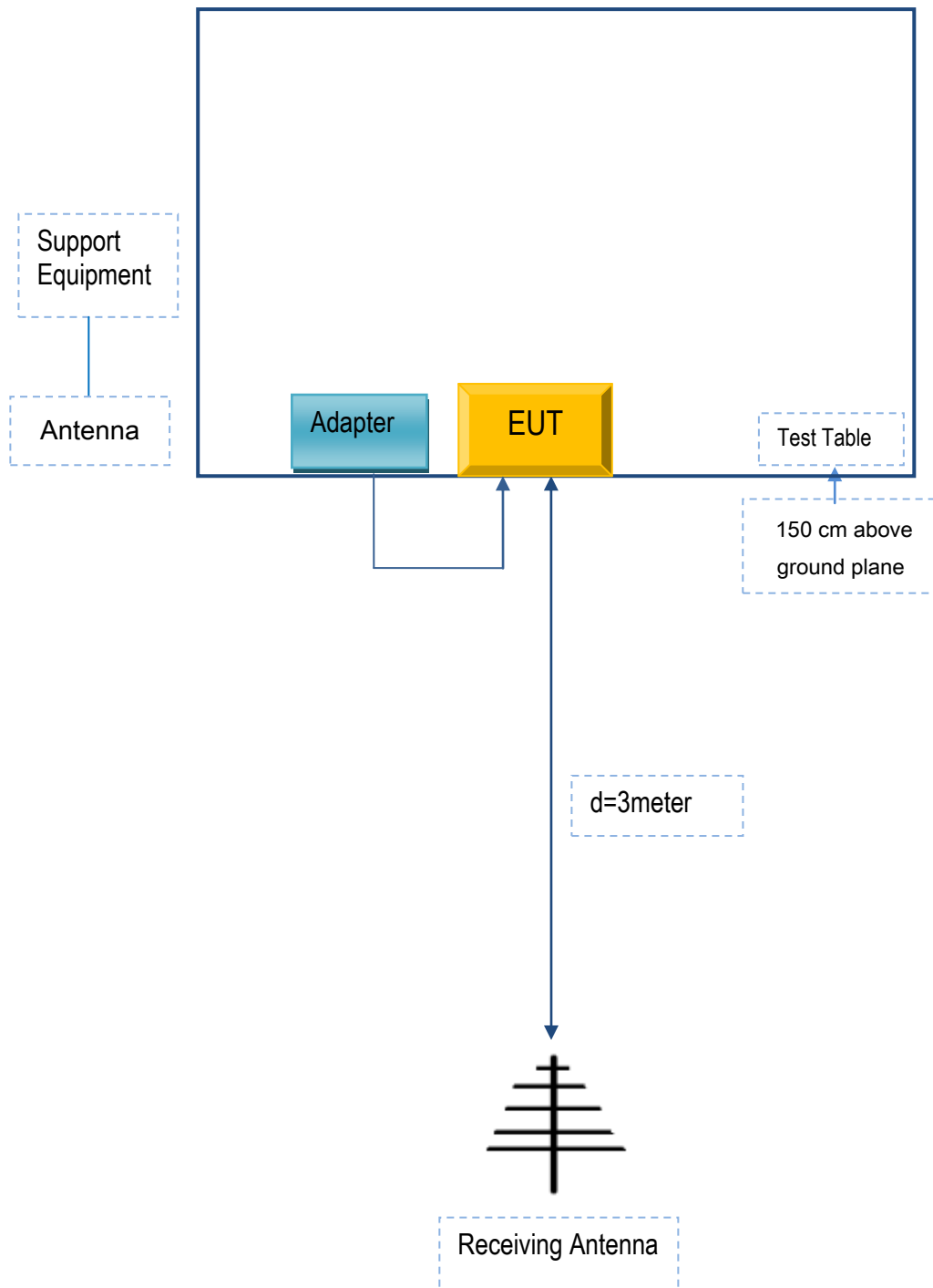


Radiated Spurious Emissions Test Setup Above
1GHz

Annex C. TEST SETUP AND SUPPORTING EQUIPMENT

Annex C.ii. TEST SET UP BLOCK

Block Configuration Diagram for Radiated Emissions



Annex C. ii. SUPPORTING EQUIPMENT DESCRIPTION

The following is a description of supporting equipment and details of cables used with the EUT.

Supporting Equipment:

Manufacturer	Equipment Description	Model	Serial No
AOC	Adapter	SC/10WA050200US	C023542

Supporting Cable:

Cable type	Shield Type	Ferrite Core	Length	Serial No
USB Cable	Un-shielding	No	0.8m	C023542

Annex C.ii. EUT OPERATING CONKITIONS

N/A

Test Report	17070190-FCC-R5
Page	120 of 121

Annex D. User Manual / Block Diagram / Schematics / Partlist

N/A

Test Report	17070190-FCC-R5
Page	121 of 121

Annex E. DECLARATION OF SIMILARITY

N/A