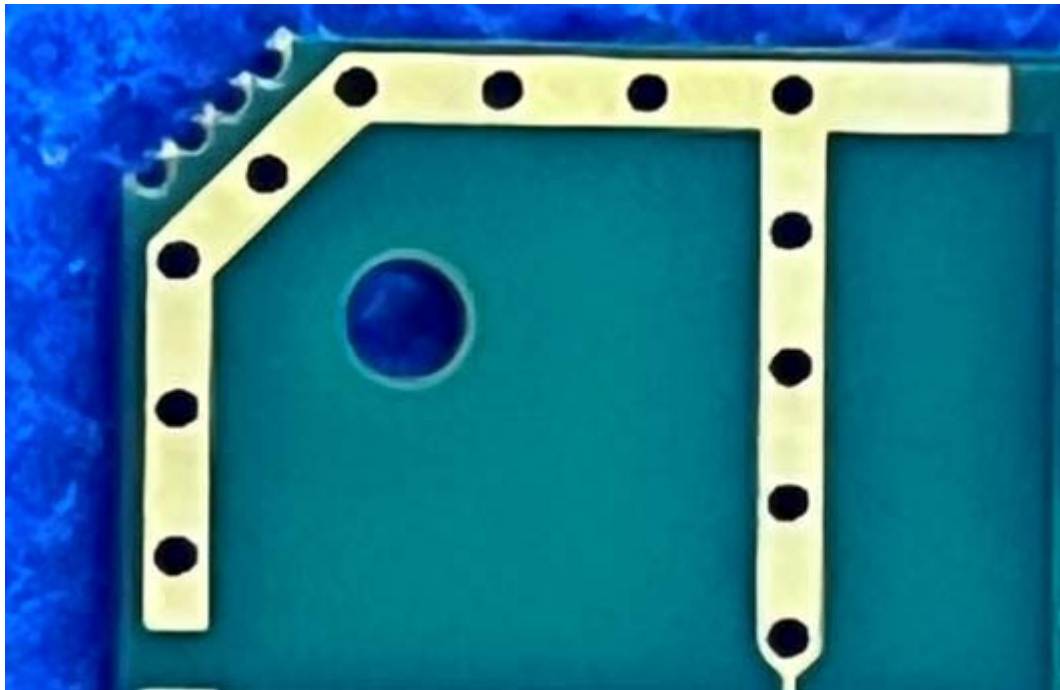


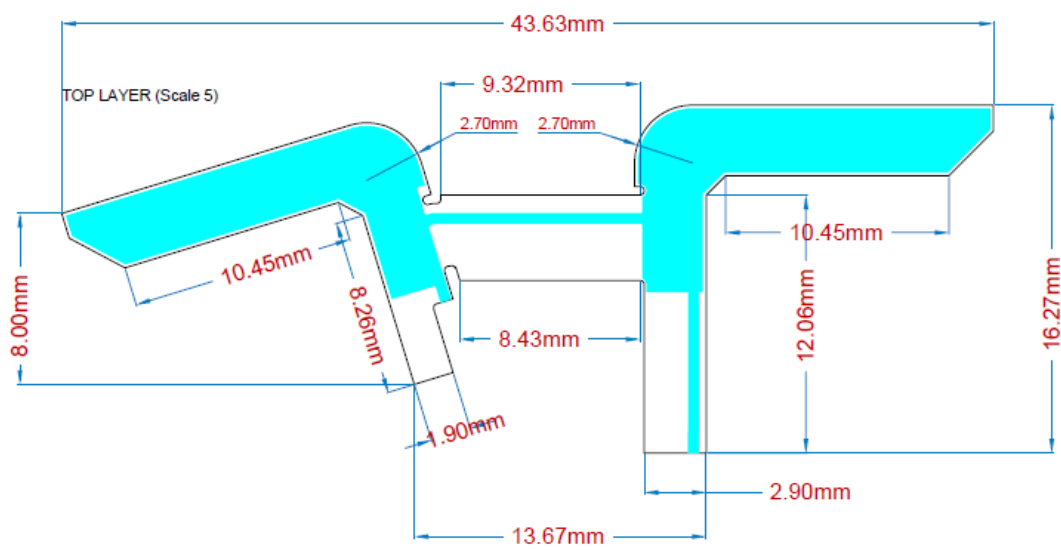
Antenna Report

Specification		
Model	Wireless PRO	
Impedance	50Ω	
Test environment	Free space	
Freq. Range	2.4-2.5GHz	
Antenna type	Antenna 1: PCB Antenna Antenna 2: FPC Antenna	
VSWR	2.4-2.5GHz < 2.0	
Gain	Antenna 1: -1.32dBi(Peak gain) Antenna 2: -2.16dBi(Peak gain)	
Manufacturer	RODE	

Antenna 1 (Size: 10*15mm)



Antenna 2 (Size)



Antenna 1

Frequency(MHz)	Efficiency(dB)	Efficiency(%)	Gain(dBi)
2400	-6.115	24.457	-2.522
2410	-6.112	24.478	-2.482
2420	-6.216	23.898	-2.621
2430	-5.948	25.246	-2.405
2440	-5.889	25.767	-2.261
2450	-5.867	25.897	-2.051
2460	-5.851	25.991	-1.836
2470	-5.904	25.676	-1.693
2480	-5.706	26.873	-1.404
2490	-5.592	27.589	-1.315
2500	-5.553	27.839	-1.334

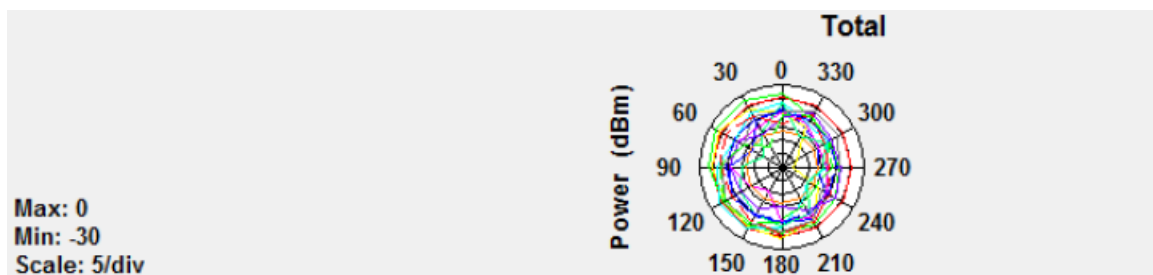
Antenna 2

Frequency(MHz)	Efficiency(dB)	Efficiency(%)	Gain(dBi)
2400	-9.336	11.246	-4.150
2410	-9.343	11.116	-3.761
2420	-9.383	11.123	-3.705
2430	-9.208	11.611	-3.405
2440	-9.073	12.055	-3.140
2450	-9.080	12.216	-2.878
2460	-9.057	12.282	-2.807
2470	-9.085	12.202	-2.672
2480	-8.924	12.666	-2.324
2490	-9.008	12.474	-2.158
2500	-9.048	12.207	-2.178

Antenna 1

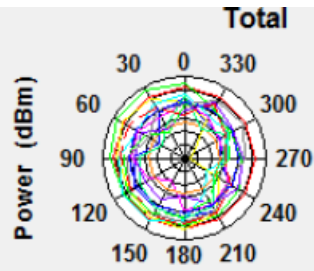
POLAR RADIATION PATTERN

FREQUENCY=2400MHZ(PHI=90°)



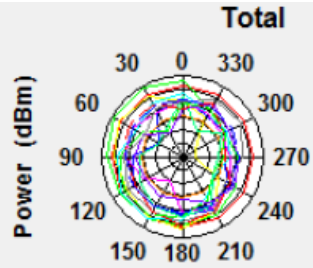
FREQUENCY=2450MHZ(PHI=0°)

Max: 0
Min: -30
Scale: 5/div



FREQUENCY=2500MHZ(PHI=90°)

Max: 0
Min: -30
Scale: 5/div

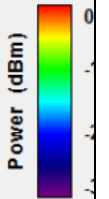
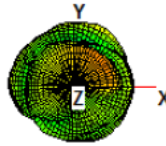


RADIATION PATTERN

FREQUENCY=2400MHZ

Total

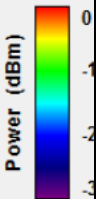
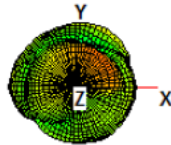
Azimuth = 0.0
Elevation = 0.0
Roll = 0.0



FREQUENCY=2450MHZ

Total

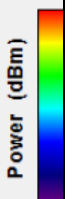
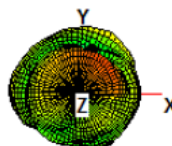
Azimuth = 0.0
Elevation = 0.0
Roll = 0.0



FREQUENCY=2500MHZ

Total

Azimuth = 0.0
Elevation = 0.0
Roll = 0.0

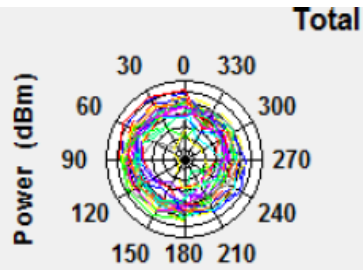


Antenna 2

POLAR RADIATION PATTERN

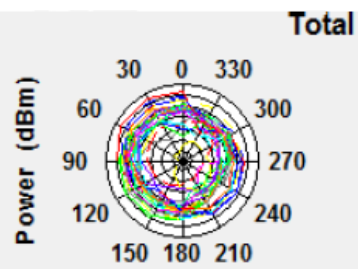
FREQUENCY=2400MHZ(PHI=90°)

Max: 0
Min: -35
Scale: 5/div



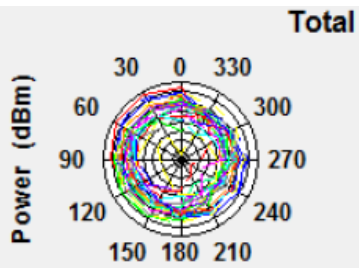
FREQUENCY=2450MHZ(PHI=0°)

Max: 0
Min: -35
Scale: 5/div



FREQUENCY=2500MHZ(PHI=90°)

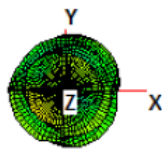
Max: 0
Min: -40
Scale: 5/div



RADIATION PATTERN

FREQUENCY=2400MHZ

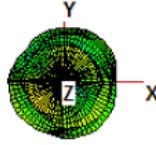
Azimuth = 0.0
Elevation = 0.0
Roll = 0.0



FREQUENCY=2450MHZ

Total

Azimuth = 0.0
Elevation = 0.0
Roll = 0.0

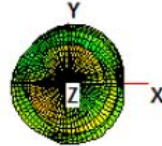


Power (dBm)

FREQUENCY=2500MHZ

Total

Azimuth = 0.0
Elevation = 0.0
Roll = 0.0



Power (dBm)