

深圳市千目通讯科技有限公司

Shenzhen Qianmu Communication Technology Co.,Ltd.

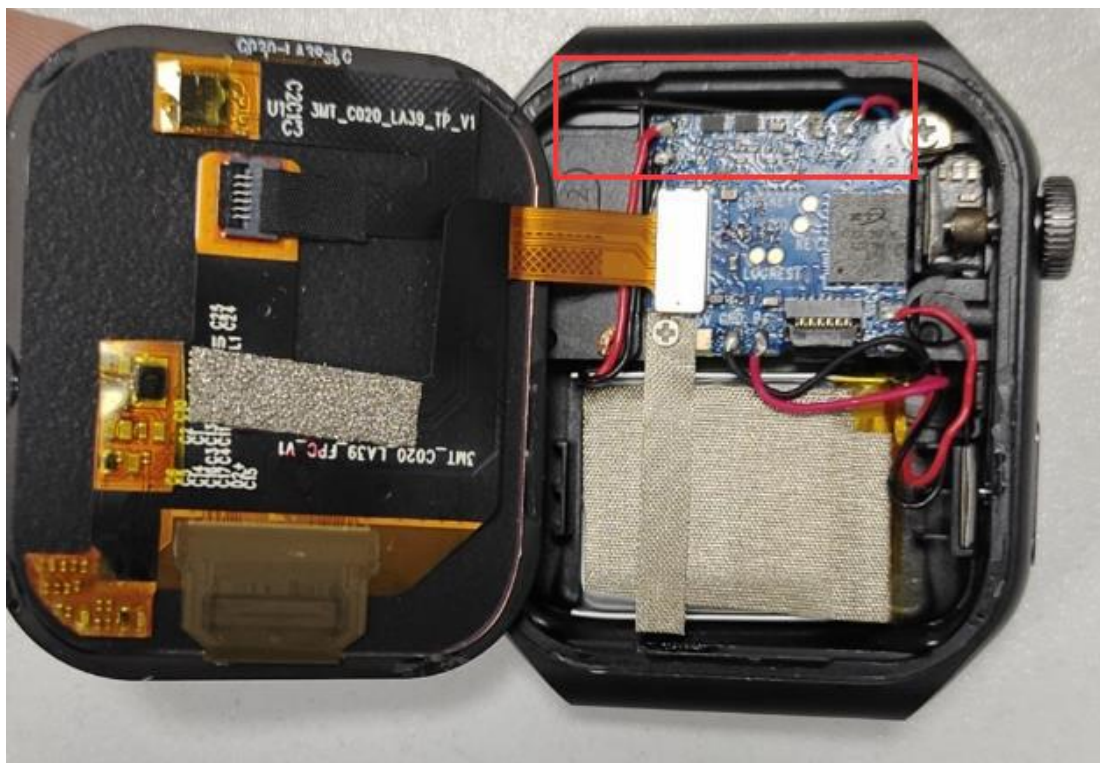
客 户[Customer]: 领为

项 目[Project]: LA39

日 期[DATE]: 2023.7.15

射 频[RF]: liu chu sheng

1 天线位置 / ANTENNA POSITION



2 天线无源效率增益数据 / ANTENNA PASSIVE EFFICIENCY

GAIN DATA

Frequency ID	1	2	3	4	5	6	7	8	9	10	11
Frequency (MHz)	2400.0	2410.0	2420.0	2430.0	2440.0	2450.0	2460.0	2470.0	2480.0	2490.0	2500.0
Point Values											
Ant. Port Input Pwr. (dBm)	0.00	0.00	0.00	0.00	0.00	0.00	0.00	0.00	0.00	0.00	0.00
Tot. Rad. Pwr. (dBm)	-8.16	-8.26	-8.09	-8.12	-7.99	-7.91	-7.89	-8.26	-8.28	-8.33	-8.31
Peak EIRP (dBm)	-1.91	-2.04	-1.93	-2.07	-2.07	-2.11	-2.28	-2.84	-2.94	-2.93	-2.84
Directivity (dBi)	6.25	6.22	6.16	6.05	5.92	5.80	5.61	5.42	5.34	5.40	5.46
Efficiency (dB)	-8.16	-8.26	-8.09	-8.12	-7.99	-7.91	-7.89	-8.26	-8.28	-8.33	-8.31
Efficiency (%)	15.30	14.90	15.50	15.40	15.90	16.20	16.30	14.90	14.90	14.70	14.80
Gain (dBi)	-1.91	-2.04	-1.93	-2.07	-2.07	-2.11	-2.28	-2.84	-2.94	-2.93	-2.84
NHPRP \pm Pi/4 (dBm)	-10.21	-10.28	-10.10	-10.13	-10.00	-9.91	-9.88	-10.29	-10.36	-10.45	-10.46
NHPRP \pm Pi/6 (dBm)	-12.24	-12.29	-12.09	-12.10	-11.95	-11.84	-11.82	-12.23	-12.32	-12.41	-12.40
NHPRP \pm Pi/8 (dBm)	-13.84	-13.86	-13.63	-13.61	-13.45	-13.34	-13.31	-13.73	-13.83	-13.92	-13.89
Upper Hem. PRP (dBm)	-9.40	-9.49	-9.32	-9.36	-9.23	-9.18	-9.19	-9.59	-9.64	-9.71	-9.69
Lower Hem. PRP (dBm)	-14.21	-14.35	-14.18	-14.19	-14.03	-13.89	-13.77	-14.04	-13.98	-13.98	-13.96
Upper Hem. PRP (%)	11.48	11.25	11.70	11.59	11.93	12.09	12.06	10.98	10.86	10.68	10.75
Lower Hem. PRP (%)	3.80	3.68	3.82	3.81	3.96	4.09	4.20	3.94	4.00	4.00	4.02

3 天线方向图和苹果图 / ANTENNA PATTERN AND APPLE DIAGRAM

