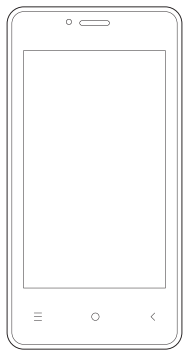




STK



# ***STORM 2E***

Quick Start-Up Guide | Guía de inicio rápido

EN | ES





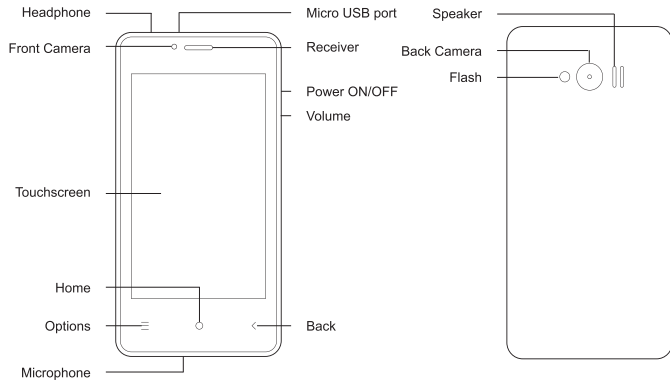
Visit [www.stklife.com](http://www.stklife.com) to access the comprehensive User Manual. Model Number: Storm 2e





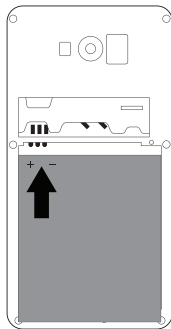
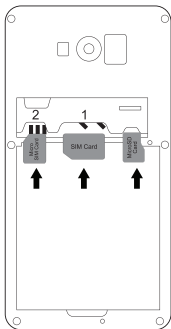
## Overview

English





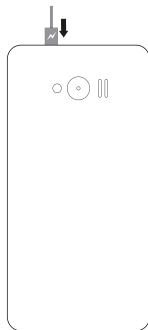
## Installing the SIM Card and battery



4



## Charging the battery



- Before using the device for the first time, you must charge the battery.
- Connecting the charger improperly may cause serious damage to the device. Any damage caused by misuse is not covered by the warranty.
- After charging the device, ensure it is disconnected from the charging socket.
- The charger should remain close to the electrical socket and easily accessible while charging.



- Use manufacturer approved batteries, chargers, accessories and supplies to prevent risk of injury, fire or explosion.
- For pluggable equipment, the socket outlet shall be installed near the equipment and shall be easily accessible.
- Risk of explosion if battery is replaced by an incorrect type. Dispose of used batteries according to this instructions.
- Do not expose the device to physical impact or damage.
- Avoid the charging jack and battery terminals from contacting conductive elements, such as metal or liquids.
- Do not store your device in very hot or cold areas. It is recommended to use your device at temperatures from 5°C to 50°C.
- Do not store your device near or in heaters, microwaves, cooking equipment or high-pressure containers.





- Do not touch the charger or the device with wet hands while the device is charging.
- Do not use your device outdoor during a thunderstorm.
- Turn off the device in potentially explosive environments.
- Comply with all safety warnings and regulations regarding mobile device usage while operating a vehicle.
- If the device is cracked, broken, or becomes very hot, stop using the device immediately. If the device has a camera flash or light, do not use it close to the eyes of people or animals.
- Your phone can cause interference with aircraft equipment. Therefore, it is essential you follow airline regulations.
- Never take your phone apart. Unauthorised repairs could break the terms of your warranty.



To prevent possible of hearing damage when using a headset, do not listen to sound at high volume for long periods.





## Correct disposal



(Waste Electrical & Electronic equipment) this marking on the product, accessories or literature indicates that the product and its electronic accessories (e.g. charger, headset, USB cable) should not be disposed of with household waste. This EEE is compliance with RoHS.



This marking on the battery, manual or packaging indicates that the batteries in this product should not be disposed of with other household waste.





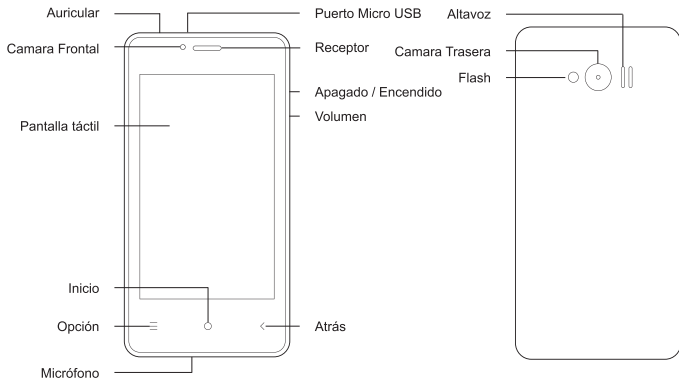


Visite [www.stklife.com](http://www.stklife.com) para acceder al manual de usuario de manera comprensiva. No Modelo: Storm 2e





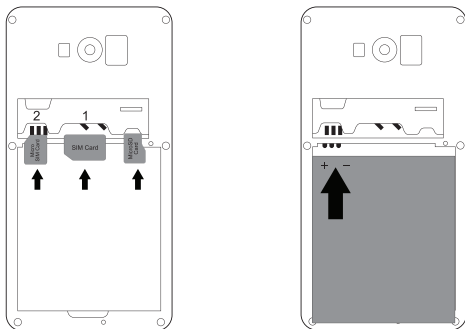
## Vista General



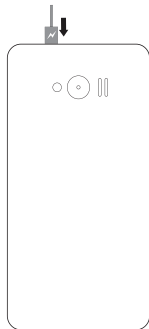
Español



## Instalación de la tarjeta SIM y la batería



## Carga de la batería



- Antes de utilizar su dispositivo por primera vez, debe cargar la batería.
- La conexión del cargador de forma inadecuada puede causar daños graves en el dispositivo. Cualquier daño causado por un mal uso no está cubierto por la garantía.
- El cargador debe permanecer cerca de una toma de corriente y fácilmente accesibles mientras se carga.
- Después de cargar su dispositivo, asegúrese de desconectarlo de su toma de carga.



## Declaración ROHS

La Declaración de Conformidad con los requisitos de las Normas de Gestión de residuos electrónicos, 2011 (aprobado por la Notificación S.O.1035 (E) del Ministerio de Medio Ambiente y Bosques).

El producto está en conformidad con los requisitos de la Norma 13 de las Normas de desechos electrónicos. El contenido de sustancias peligrosas, con la excepción de las aplicaciones incluidas en la Lista II de las Normas de desechos electrónicos:

1. Plomo (Pb) – no más del 0.1% del peso;
2. Cadmio (Cd) – no más del 0.01% del peso;
3. Mercurio (Hg) – no más del 0.1% del peso;
4. Cromo hexavalente (Cr6+) – no más del 0.1% del peso;
5. Difenilos polibromados (PBBs) – no más del 0.1% del peso;
6. Polibromodeféniléteres (PBDEs) – no más del 0.1% del peso.





## Instrucciones de Seguridad

Por favor, lea las siguientes directrices. Para ver la información de seguridad completa, por favor, consulte el apartado "Salud y seguridad" de la página web de [www.stklife.com](http://www.stklife.com).



- Use las baterías, cargadores, accesorios y suministros proporcionados por el fabricante.
- Para equipos con enchufe, la toma de corriente debe estar instalada cerca del equipo y debe ser fácilmente accesible.
- Puede haber riesgo de explosión si la batería se sustituye por un modelo incorrecto. Deseche las baterías usadas de acuerdo con estas instrucciones.
- No exponga el dispositivo a un impacto físico o daños.
- Evite que los contactos del Jack y la batería se pongan en contacto con elementos conductores, tales como metales o líquidos.



- No guarde su terminal en lugares calientes y muy fríos. Se recomienda el uso de su dispositivo a temperaturas de 5 a 35 grados centígrados.
- No guarde el dispositivo cerca de calentadores, microondas, utensilios de cocina o recipientes de alta presión.
- No manipule el cargador o el dispositivo con las manos mojadas mientras que el dispositivo se está cargando.
- No utilice el dispositivo al aire libre durante una tormenta eléctrica.
- Apague el dispositivo en entornos potencialmente explosivos.



Para evitar posibles daños auditivos cuando utilice el auricular, no escuche el sonido en el volumen más alto durante largos períodos de tiempo.





## Eliminación Correcta



(Residuos de aparatos eléctricos y electrónicos) Este símbolo en el producto, accesorio o material indica que el producto y los accesorios electrónicos (como el cargador, cascos, cable USB) no se deben de tirar a la basura doméstica. Este EEE es de cumplimiento del RoHS.



Esta marca en las baterías, el manual o el paquete del producto indica que las baterías de este producto no deben eliminarse junto con otros residuos domésticos.



Para más información y soporte sobre su dispositivo y accesorios, por favor contacte en [www.stklife.com](http://www.stklife.com). Todas las marcas comerciales, derechos de autor son propiedad de sus respectivos propietarios.









STK reserves the rights to change specifications and parameters of the products without prior notice.

STK se reserva los derechos de cambiar las especificaciones y parámetros de los productos sin previa notificación.

V140616





stk



### **FCC Warning:**

This equipment has been tested and found to comply with the limits for a Class B digital device, pursuant to part 15 of the FCC Rules. These limits are designed to provide reasonable protection against harmful interference in a residential installation. This equipment generates, uses and can radiate radio frequency energy and, if not installed and used in accordance with the instructions, may cause harmful interference to radio communications. However, there is no guarantee that interference will not occur in a particular installation. If this equipment does cause harmful interference to radio or television reception, which can be determined by turning the equipment off and on, the user is encouraged to try to correct the interference by one or more of the following measures:

- Reorient or relocate the receiving antenna.
- Increase the separation between the equipment and receiver.
- Connect the equipment into an outlet on a circuit different from that to which the receiver is connected.
- Consult the dealer or an experienced radio/TV technician for help.

Caution: Any changes or modifications to this device not explicitly approved by manufacturer could void your authority to operate this equipment.

This device complies with part 15 of the FCC Rules. Operation is subject to the following two conditions: (1) This device may not cause harmful interference, and (2) this device must accept any interference received, including interference that may cause undesired operation.

This 3G Smart phone meets the government's requirements for exposure to radio waves. The guidelines are based on standards that were developed by independent scientific organizations through periodic and thorough evaluation of scientific studies. The standards include a substantial safety margin designed to assure the safety of all persons regardless of age or health.

FCC RF Exposure Information and Statement The SAR limit of USA (FCC) is 1.6 W/kg averaged over one gram of tissue. Device types: Tablet PC (FCC ID: 2AE7RSTKSTORM2E) has also been tested against this SAR limit. This device was tested for typical body-worn operations with the back of the 3G Smart phone kept **10mm** from the **body**. To maintain compliance with FCC RF exposure requirements, use accessories that maintain a **10mm** separation distance between the user's **body** and the back of the 3G Smart phone. The use of belt clips, holsters and similar accessories should not contain metallic components in its assembly. The use of accessories that do not satisfy these requirements may not comply with FCC RF exposure requirements, and should be avoided.