

# AR1004 User Manual

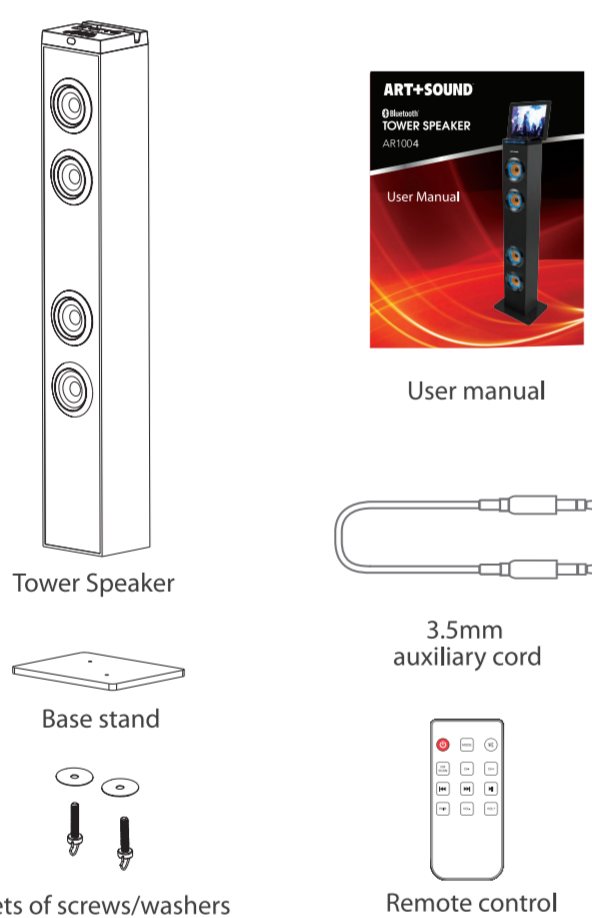
## ART+SOUND

Bluetooth  
TOWER SPEAKER  
AR1004

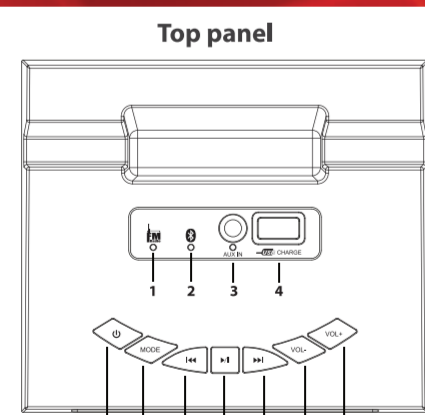
### User Manual



#### IN THE BOX:

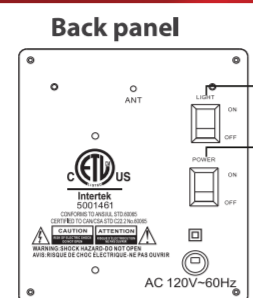


#### LOCATION OF CONTROLS:



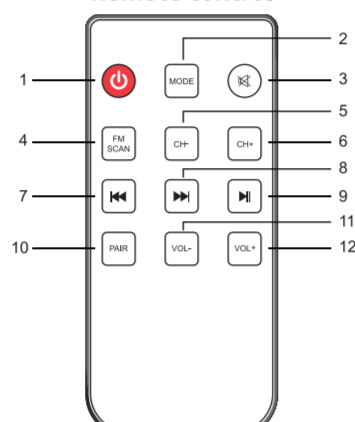
1. FM Radio indicator light
2. Bluetooth indicator light
3. AUX IN jack/indicator light
4. USB charging port (use to charge external devices only)
5. [ ] button: Standby power - press and HOLD to turn ON/OFF
6. [MODE] button: press to change playing mode - FM Radio, Bluetooth, AUX IN
7. [ ] button: quickpress to skip to previous track; press and HOLD to scan FM stations
8. [ ] button: Quickpress to play/pause; quickpress to mute in FM Radio mode; press and HOLD to enter Bluetooth pairing mode
9. [ ] button: quickpress to skip to next track; press and HOLD to scan FM stations
10. [VOL-] button: Decrease volume
11. [VOL+] button: Increase volume

#### LOCATION OF CONTROLS (CONT):

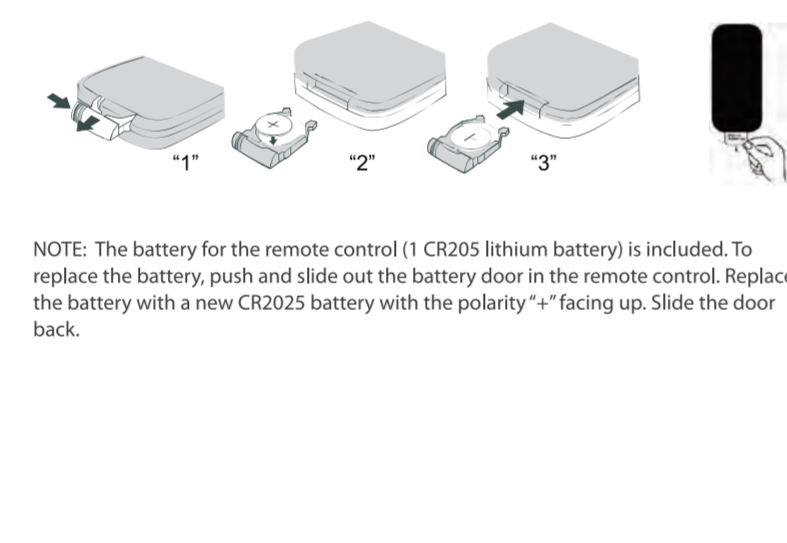


12. [POWER] switch: Main power
13. [LIGHT] switch: Turn LED accent lights ON/OFF

#### Remote control

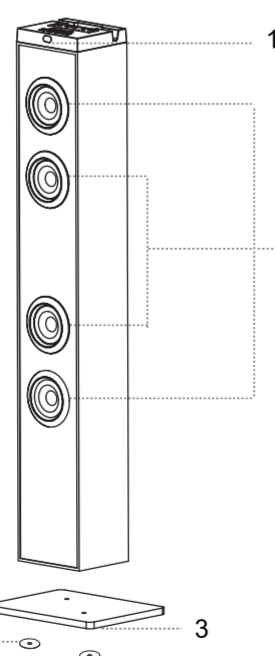


1. [ ] key: Standby power - press to turn ON/OFF
2. [MODE] key: Press to change playing mode - FM Radio, Bluetooth, AUX IN
3. [ ] key: Press to mute volume
4. [FM SCAN] key: Auto scan FM Radio
5. [CH-] key: Preset FM Radio station
6. [CH+] key: Preset FM Radio station
7. [ ] key: quickpress to skip to previous track; press and HOLD to scan FM stations
8. [ ] key: quickpress to skip to next track; press and HOLD to scan FM stations
9. [ ] key: Play/pause
10. [PAIR] key: Press to enter pairing mode or to unpair
11. [VOL-] key: Decrease volume
12. [VOL+] key: Increase volume



NOTE: The battery for the remote control (1 CR2025 lithium battery) is included. To replace the battery, push and slide out the battery door in the remote control. Replace the battery with a new CR2025 battery with the polarity "+" facing up. Slide the door back.

#### SETUP



1. IR Remote Sensor
2. Whole Tone Speakers
3. Base Stand
4. Screws
5. Washers

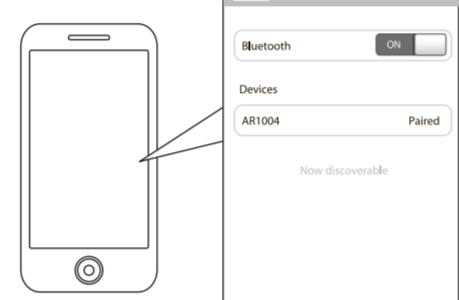
Step 1: Connect the wooden base to the main body using the supplied screws and washers.  
Step 2: Insert the AC plug into an AC outlet.

#### BLUETOOTH PAIRING & LINKING OPERATION:

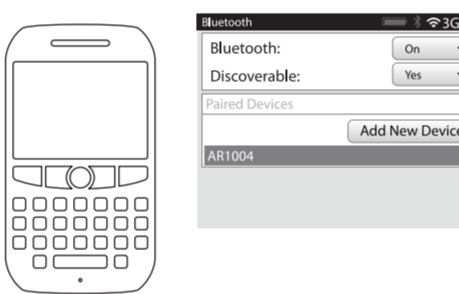
1. Plug the speaker into a power source.
2. Turn ON the speaker by pressing the Main power switch on the back of the unit.
3. Press the [ ] Standby power button on the speaker or the remote control to turn on the unit.
4. Press the [MODE] button on the speaker or the [PAIR] key on the remote control repeatedly until the Bluetooth indicator light flashes GREEN.
5. Keep the speaker and Bluetooth enabled device within 3 feet of each other during the pairing process.
6. Set your mobile phone or other Bluetooth enabled device to search for Bluetooth devices.



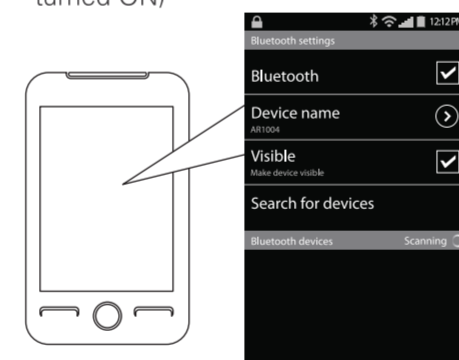
**On an iPhone**  
• Go to SETTINGS > GENERAL > BLUETOOTH (Make sure Bluetooth is turned ON)



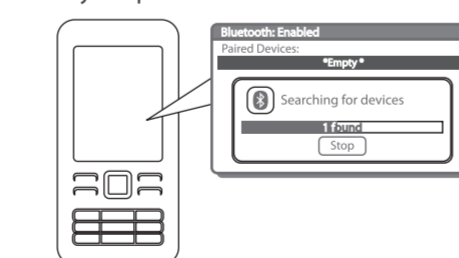
**On a Blackberry**  
• Go to SETTINGS/OPTIONS > BLUETOOTH  
• Enable BLUETOOTH



**On an Android Phone**  
• Go to SETTINGS > BLUETOOTH > MENU > Search for devices (Make sure Bluetooth is turned ON)



**On other Cell Phones/Devices**  
Review the instruction manual that came with your phone/device.



7. When the Bluetooth enabled device finds the speaker, select "AR1004" from the list of found devices.
8. If required, enter the password 0000. Select OK or Yes to pair the two units.
9. After a successful pairing, the Indicator light will become solid GREEN.

The unit will stay paired unless unpaired manually by the user or erased due to a reset of the device. If your device should become unpaired or you find it is unable to connect, repeat the above steps or press the Pair button to start the pairing process pairing again.

**Note:** If the speaker has already been connected to the Bluetooth device/phone, the speaker will reconnect with the Bluetooth device/phone automatically.

The screenshots above are typical of many Bluetooth enabled devices in the market today, and are used to assist in the explanation of the pairing process. Your Bluetooth enabled device's interface and interaction with the Tower Speaker may slightly differ from the illustrations above.

#### BASIC OPERATION:

1. Flip Main Power switch on the rear of the unit to the ON position.
2. Press the [ ] button to turn ON the unit.
3. Press the [MODE] button on the speaker or the [MODE] key on the remote control repeatedly to switch to Bluetooth mode. The source indicator will light up GREEN accordingly.
4. Press the [VOL+] and [VOL-] buttons on the speaker or on the remote control to adjust volume level.
5. Press the [ ] key on the remote control to turn off the sound. Press it again to turn the sound back on.

#### PLAY MUSIC FROM BLUETOOTH DEVICES:

Make sure the Bluetooth connection between the speaker and the Bluetooth enabled device is active. (See Bluetooth pairing & linking operation.)

1. Press the [ ] button on the speaker or the [ ] on the remote control to play a track. Press again again to pause.
2. Press [ ] on the speaker or the remote control to skip forward to the next track and [ ] to skip backward to the previous track.
3. Press [VOL+] and [VOL-] on the speaker or the remote control to adjust volume level.

You may also adjust the volume from your mobile device's volume control.

#### RADIO OPERATION:

1. Press the [MODE] button on the speaker or on the remote control repeatedly until the FM indicator turns GREEN.
2. Press the [ ] or [ ] button on the speaker or the remote control to tune down/up through radio stations.
3. To scan to the next available station, press and HOLD the [ ] or [ ] button for one full second and release.
4. Press the [FM SCAN] key on the remote control to search all available stations. Press it again to stop on a station.
5. Press the [CH+] and [CH-] keys on the remote control to select a preset station.

To enhance radio reception ability, fully unwind and extend the FM antenna wire located on the back of the speaker.

#### AUXILIARY PLAYBACK:

1. Plug one end of the included 3.5 mm Auxiliary cord to the headphone jack on your device.
2. Plug the other end of the 3.5 mm Auxiliary cord into the AUX jack on the top of the speaker.
3. Press the [ ] button to turn ON the unit.
4. Press the [MODE] button on the speaker or on the remote control repeatedly until the AUX indicator turns GREEN.
5. Use your device's audio controls for music playback.

Only [VOL+] and [VOL-] buttons on the speaker are operational when a device is plugged into the AUX jack.

#### TROUBLESHOOTING:

I can pair the Tower Speaker with my Bluetooth device, but I cannot hear any music.

1. Make sure your Bluetooth device supports A2DP profile.
2. Turn up the volume on your Bluetooth device.
3. You may have to unpair the speaker, then re-pair to your device.

I cannot get the Tower Speaker into Pairing Mode.

1. Make sure the Tower Speaker system is turned ON before beginning the pairing process.
2. Press the [MODE] button on the speaker or the [PAIR] key on the remote control repeatedly until the Bluetooth indicator light flashes GREEN.
3. The speaker is now in pairing mode.

My Bluetooth device is not able to pair with the Tower Speaker.

1. Make sure the Tower Speaker is turned ON before beginning the pairing process.
2. Keep your Tower Speaker and Bluetooth enabled device within 3 feet of each other during the pairing process.
3. Press the [MODE] button on the speaker or the [PAIR] key on the remote control repeatedly until the Bluetooth indicator light flashes GREEN.
4. Check that YOUR device's Bluetooth feature is turned ON.
5. Try repeating the pairing process, see "Pairing the speaker with a Bluetooth enabled device".

Use of this unit near fluorescent lighting may cause interference regarding use of the remote. If the unit is displaying erratic behavior, move it away from any fluorescent lighting, as that may be the cause.

#### SAFTY INSTRUCTIONS:

1. Read these instructions.
2. Keep these instructions.
3. Heed all warnings.
4. Follow all instructions.
5. Do not use this apparatus near water.
6. Clean only with a dry cloth.
7. Do not block any ventilation openings. Install in accordance with the manufacturer's instructions.
8. Do not install near any heat sources such as radiators, heat registers, stoves, or other apparatus (including amplifiers) that produce heat.
9. Do not defeat the safety purpose of the polarized or grounding-type plug. A polarized plug has two blades with one wider than the other. A grounding type plug has two blades and a third grounding prong. The wide blade or the third prong are provided for your safety. When the provided plug does not fit into your outlet, consult an electrician for replacement of the obsolete outlet.
10. Protect the power cord from being walked on or pinched particularly at plugs, convenience receptacles, and the point where they exit from the apparatus.
11. Only use attachments/accessories specified by the manufacturer.
12. Use only with a cart, stand, tripod, bracket, or table specified by the manufacturer, or sold with the apparatus. When a cart is used, use caution when moving the cart/apparatus combination during lightning storms or when unused for long periods of time.



13. Unplug the apparatus during lightning storms or when unused for long periods of time.
14. Refer all servicing to qualified service personnel. Servicing is required when the apparatus has been damaged in any way, such as power-supply cord or plug is damaged; liquid has been spilled or objects have fallen into the apparatus; the apparatus has been exposed to rain or moisture; does not operate normally, or has been dropped.
15. WARNING: The mains plug is used as a disconnect device; the disconnect device shall remain readily operable.
16. WARNING: To reduce the risk of fire or electric shock, do not expose this apparatus to rain or moisture. The apparatus shall not be exposed to dripping or splashing, and objects filled with liquids, such as vases, shall not be placed on apparatus.

17. This equipment is a Class II or double insulated electrical appliance. It has been designed in such a way that it does not require a safety connection to electrical earth.



The lightning flash with arrowhead symbol, within an equilateral triangle is intended to alert the user to the presence of uninsulated "dangerous voltage" which may be of sufficient magnitude to constitute a risk of electric shock to the person.  
The exclamation point within an equilateral triangle is intended to alert the user to the presence of important operating and maintenance (servicing) instructions in the literature accompanying the appliance.

Only [VOL+] and [VOL-] buttons on the speaker are operational when a device is plugged into the AUX jack.

#### ADDITIONAL WARNINGS & PRECAUTIONS

- Battery shall not be exposed to excessive heat such as sunshine, fire or the like.
- Batterie (batterie ou piles installées) ne doit pas être exposée à une chaleur excessive comme le soleil, le feu, etc. Danger d'explosion si la pile n'est pas remplacée correctement. Ne remplacer que par le même type ou un type équivalent.

CAUTION: TO PREVENT ELECTRIC SHOCK, MATCH WIDE BLADE OF PLUG TO WIDE SLOT, FULLY INSERT.

CAUTION: Use of controls or adjustments or performance of procedures other than those specified may result in hazardous radiation exposure.

WARNING: Changes or modifications to this unit not expressly approved by the party responsible for compliance could void the user's authority to operate the equipment.

WARNING: Do not place this unit directly onto furniture surfaces with any type of soft, porous, or sensitive finish. As with any rubber compound made with oils, the feet of this unit may cause marks or staining where they reside. We recommended using a protective barrier such as a cloth or a piece of glass between the unit and the surface to reduce the risk of damage and/or staining.

WARNING: Use of this unit near fluorescent lighting may cause interference regarding use of the remote. If the unit is displaying erratic behavior move away from any fluorescent lighting, as it may be the cause.

WARNING: Shock hazard - Do Not Open.

WARNING: TO REDUCE THE RISK OF ELECTRIC SHOCK, DO NOT REMOVE COVER (OR BACK). NO USER-SERVICEABLE PARTS INSIDE. REFER SERVICING TO QUALIFIED

#### LEGAL INFORMATION

FCC Part 15:  
This device complies with Part 15 of the FCC Rules. Operation is subject to the following two conditions:  
(1) this device may not cause harmful interference, and  
(2) this device must accept any interference received, including interference that may cause undesired operation.

(1) this device may not cause harmful interference, and  
(2) this device must accept any interference received, including interference that may cause undesired operation.

NOTE: This equipment has been tested and found to comply with the requirements for a Class B digital device under Part 15 of the Federal Communications Commission (FCC) rules. These requirements are intended to provide reasonable protection against harmful interference in a residential installation. This equipment generates, uses and can radiate radio frequency energy and, if not installed and used in accordance with the instructions, may cause harmful interference to radio communications.

However, there is no guarantee that interference will not occur in a particular installation. If this equipment does cause harmful interference to radio or television reception, which can be determined by turning the equipment off and on, the user is encouraged to try to correct the interference by one or more of the following measures:

- Reorient or relocate the receiving antenna.
- Increase the separation between the equipment and receiver.
- Connect the equipment into an outlet on a circuit different from that to which the receiver is connected.
- Consult the dealer or an experienced radio/TV technician for help.

RF warning statement:  
The device has been evaluated to meet general RF exposure requirement.  
The device can be used in portable exposure condition without restriction.

Do not attempt to repair or modify this equipment.  
Shielded USB cables must be used with this unit to ensure compliance with the Class B FCC limits.

If your electronic device has internal memory on which personal or other confidential data may be stored, you may want to perform a data sanitization process before you dispose of your device to assure another party cannot access your personal data. Data sanitization varies by the type of product and its software, and you may want to research the best sanitization process for your device before disposal. You may also check with your local recycling facility to determine their data sanitization procedures during the recycling process.

#### LIMITED WARRANTY

This product as supplied and distributed new by AIT, Inc. ("AIT") to the original consumer purchaser is warranted by AIT against defects in material and workmanship for a period of one year from your date of purchase ("Warranty").  
In the unlikely event that this product is defective, or does not perform properly, you may within one year from your original date of purchase return it to the authorized service center for repair or exchange.

- TO OBTAIN WARRANTY SERVICE:**
- Provide proof of the date of purchase within the package (Dated bill of sale).
  - Prepay all shipping costs to the authorized service center, and remember to insure your return.
  - Include a return shipping address (no P.O. Boxes), a telephone contact number, and the defective unit within the package.
  - Describe the defect or reason you are returning the product.

Your product will be repaired or replaced, at our option, for the same or similar model of equal value if examination by the service center determines this product is defective. Products returned damaged as a result of shipping, will require you to file a claim with the carrier.

The shipping address of the authorized service center is:

AIT, Inc.  
ATTN: Customer Service (2nd Floor)  
14C, 53rd Street  
Brooklyn, NY 11232

IN NO EVENT WILL AIT, ITS MANUFACTURERS, DISTRIBUTORS OR P.L.R. IP HOLDINGS, LLC BE LIABLE FOR ANY INCIDENTAL, DIRECT, INDIRECT, SPECIAL, PUNITIVE OR CONSEQUENTIAL DAMAGES, SUCH AS, BUT NOT LIMITED TO, DAMAGES FOR LOSS OF PROFITS, BUSINESS SAVINGS, DATA OR RECORDS) RELATED TO THIS PRODUCT, EXCEPT AS STATED HEREIN, NO OTHER WARRANTIES SHALL APPLY.

Should you have any questions or problems concerning this product, please contact our customer service department at:

Customer Support:  
Phone: 1-877-768-8481  
Monday-Friday 8AM-10PM(EST)

www.southernitelectrom.com  
Click on "Product Support"