

Declaration of Equivalence

For declaration of equality between a product variant to be certified with reference to an original product.

To be issued and signed by the company responsible for the product variant.

Declare on our sole responsibility that the product

- Original Model

| Product Information | |
|---------------------|-------------------|
| Product ID: | DGU-8745-C300SA-1 |

are in all relevant parts identical to the product

- Variant Model

| Product Information | |
|---------------------|-------------------|
| Product ID: | DGU-8745-X150SA-1 |

- The difference between (original design) and (variant design) is :

DGU-8745-X150SA-1 :

-The difference is the new model(vehicle Model) and bracket of side.

(Variant model is completely same to original model(electrically and mechanically is same)

We, the undersigned, hereby declare that the Second Manufacturer Design is identical in both design and implementation.

Signed by

Company Name : DIGEN CO.,LTD.

Korea / 22 Jan, 2019
(Place, date of issue)

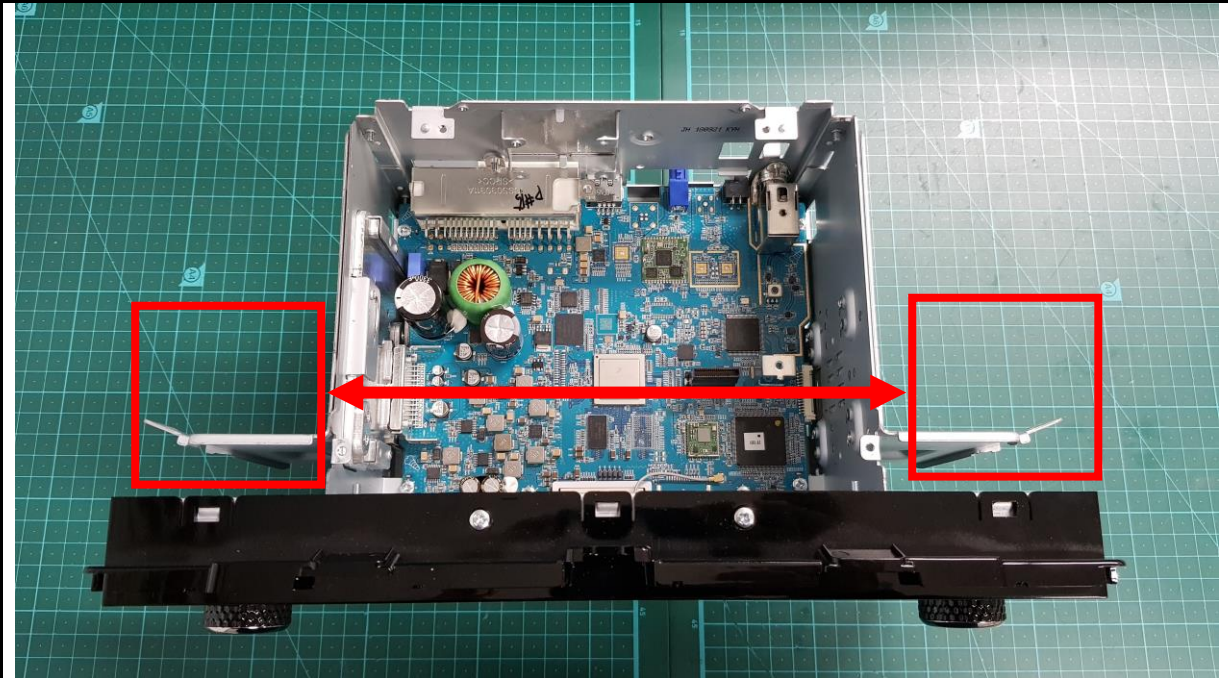


(Signature / stamp)

Jun Kim / Manager

Appearance

Original Model
(DGU-8745-C300SA-1)



Variant Model
(DGU-8745-X150SA-1)

