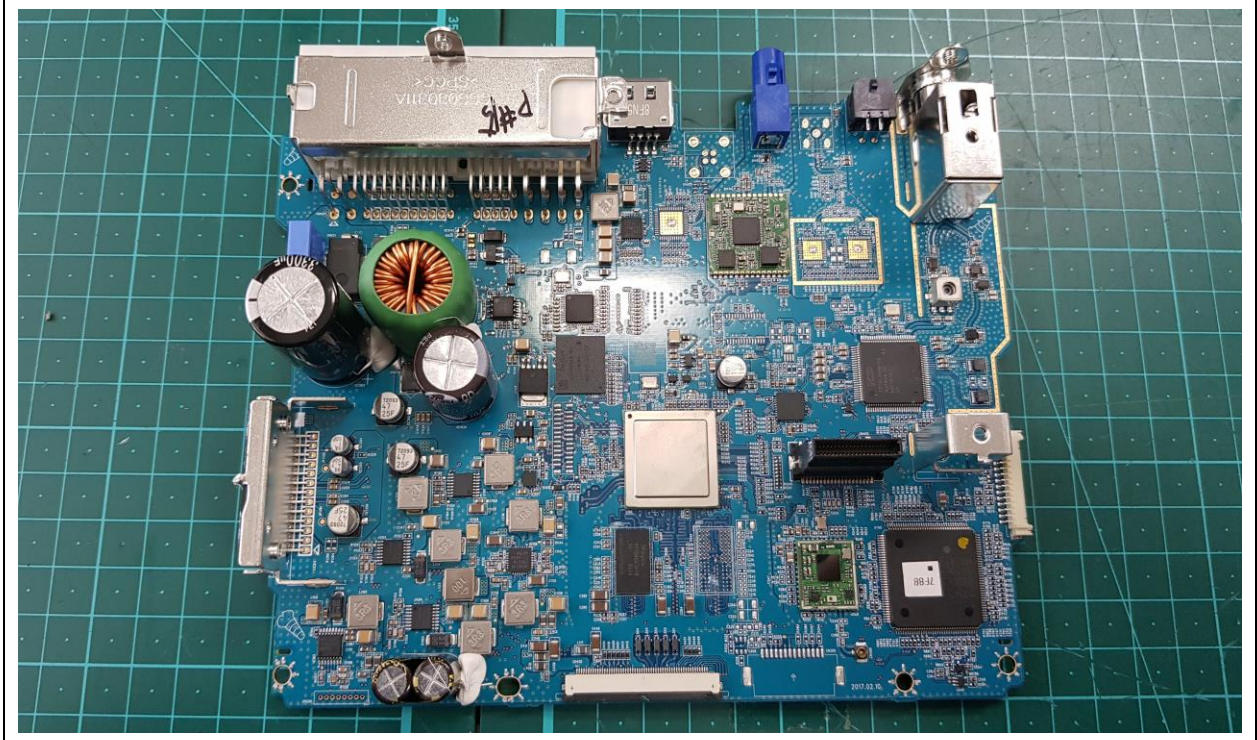


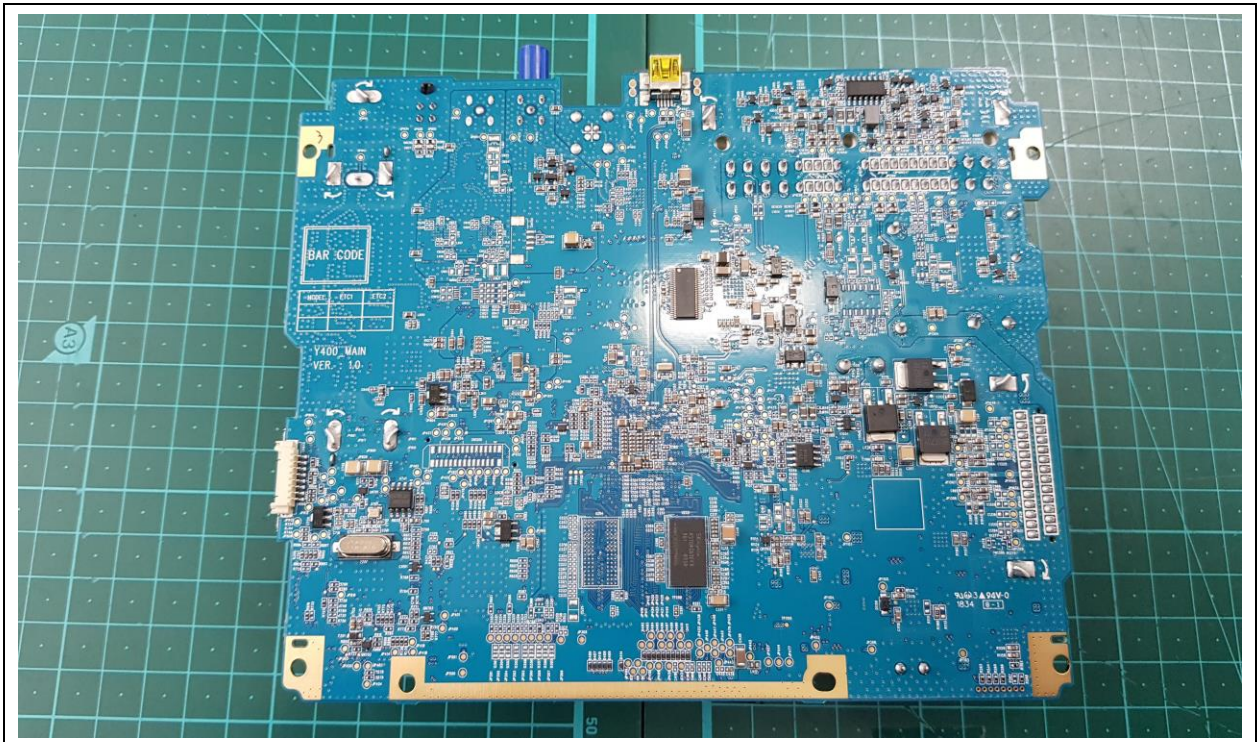
Internal Photos

Internal Photos

Main PCB Front

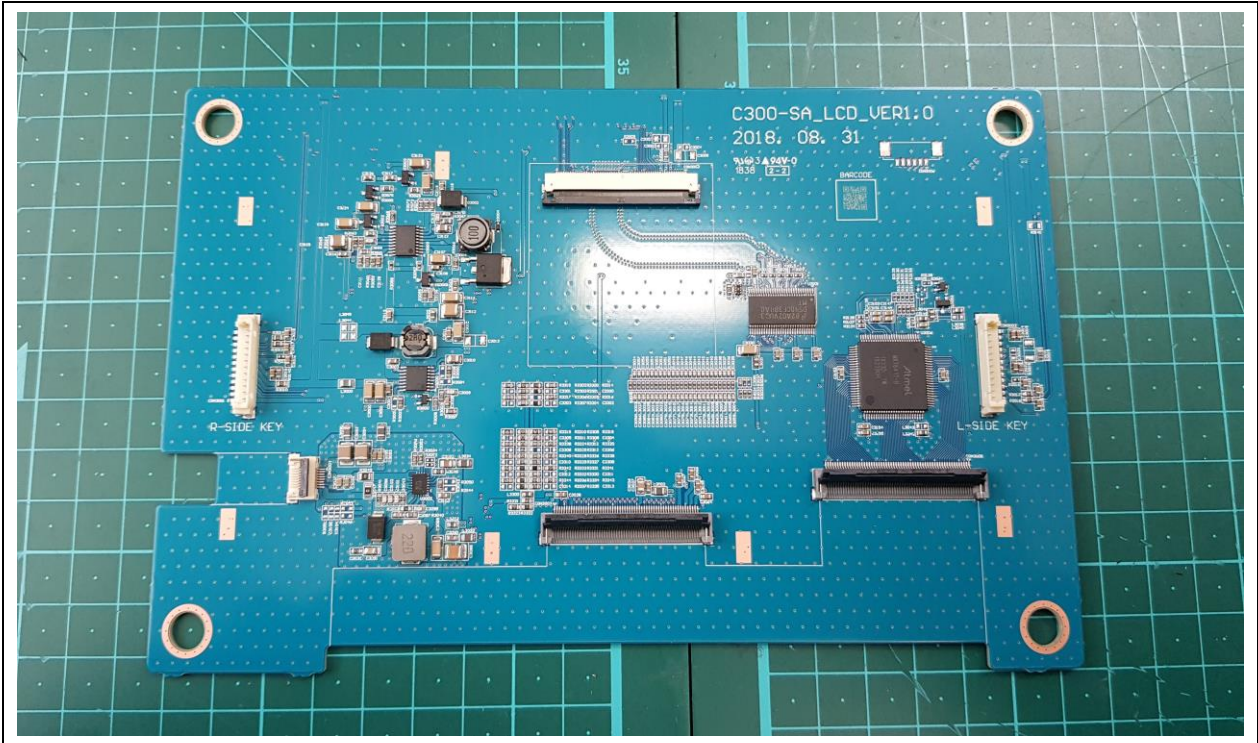


Main PCB Rear

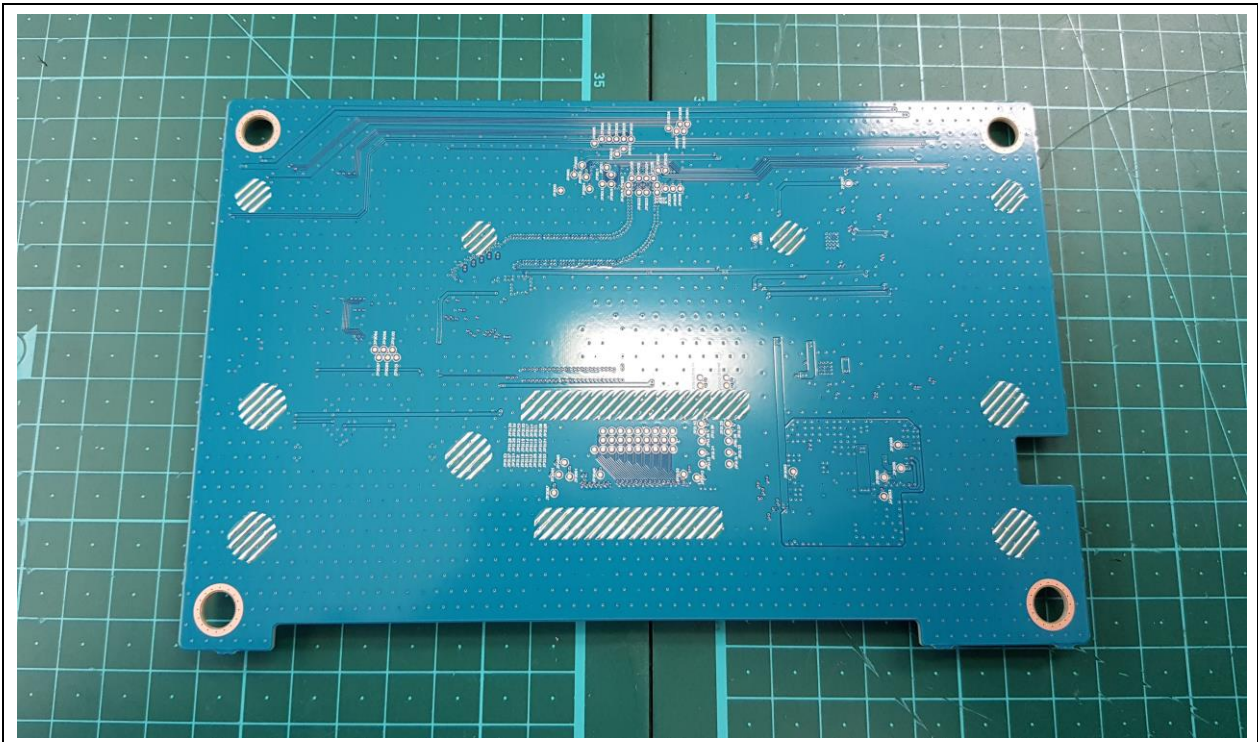


Internal Photos

LCD PCB Front

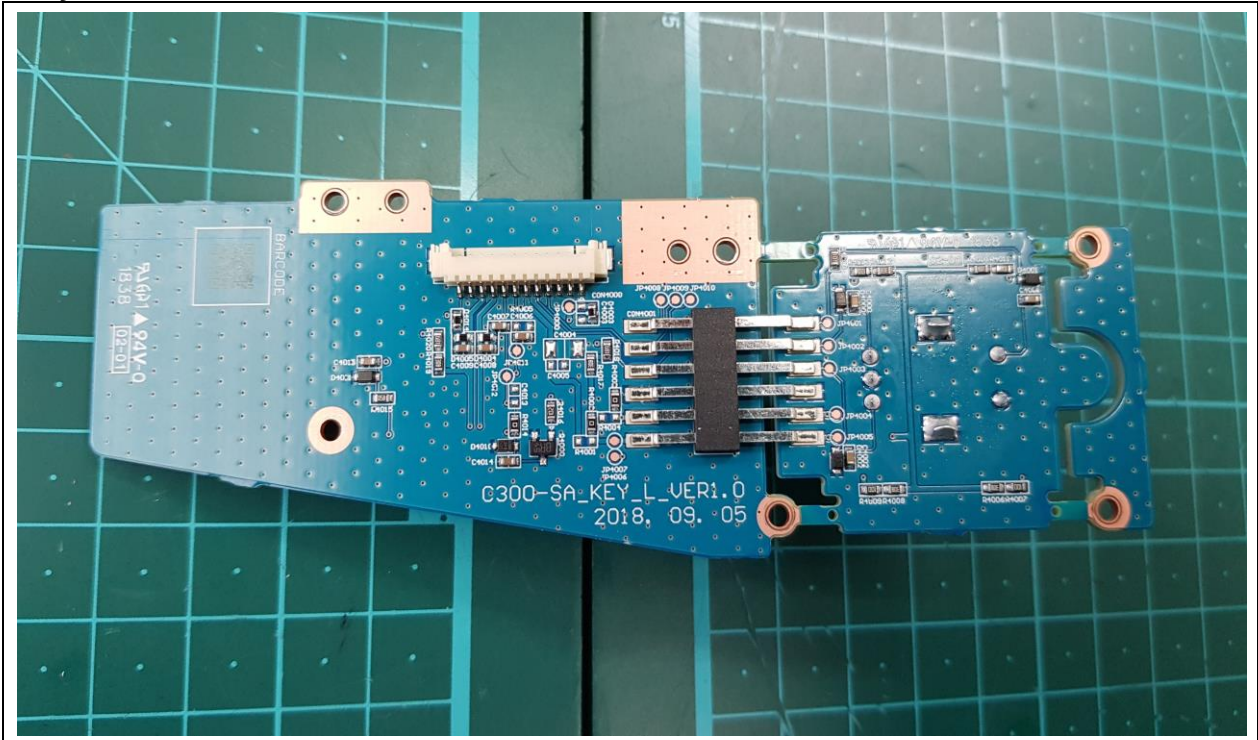


LCD PCB Rear

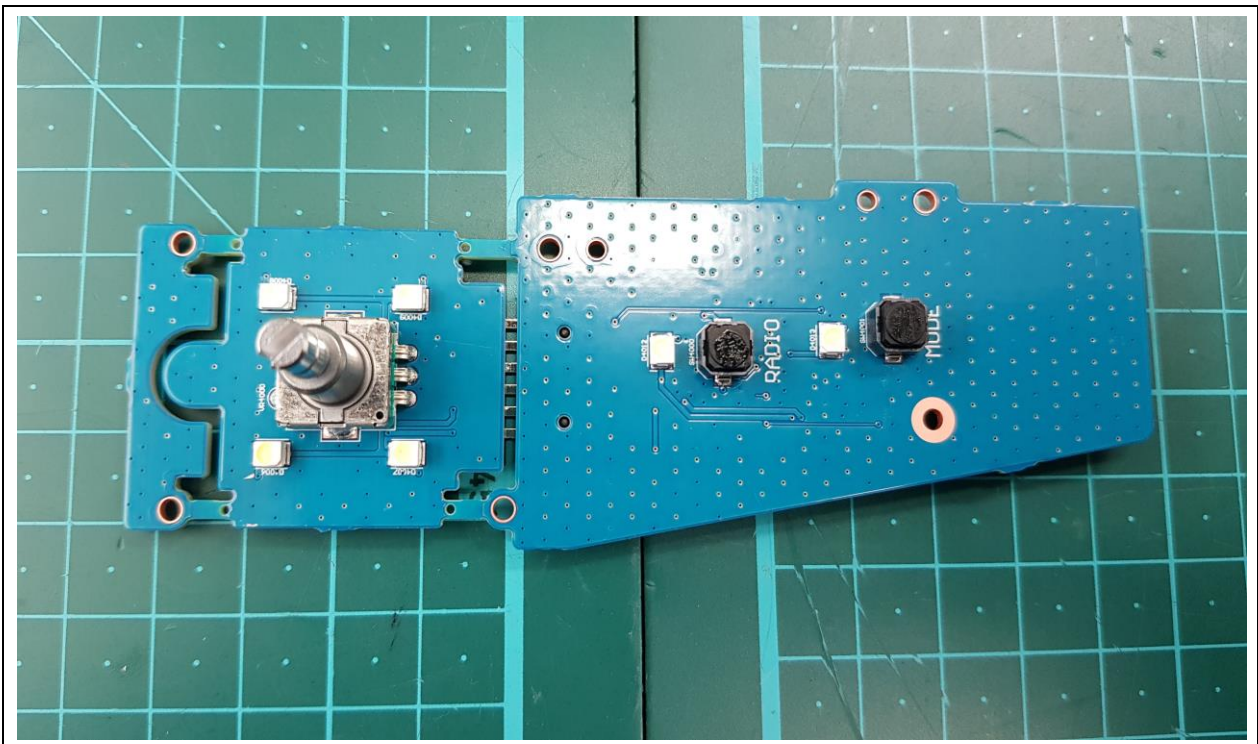


Internal Photos

Key Left PCB Front

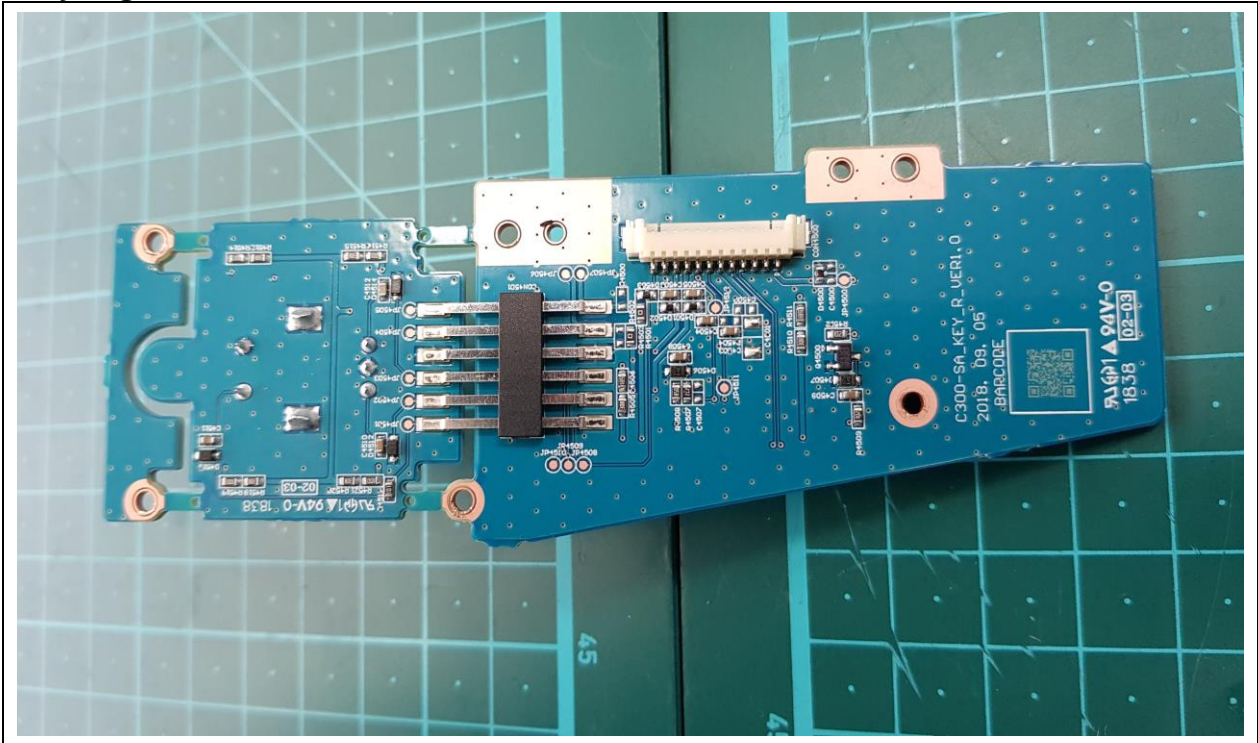


Key Left PCB Rear

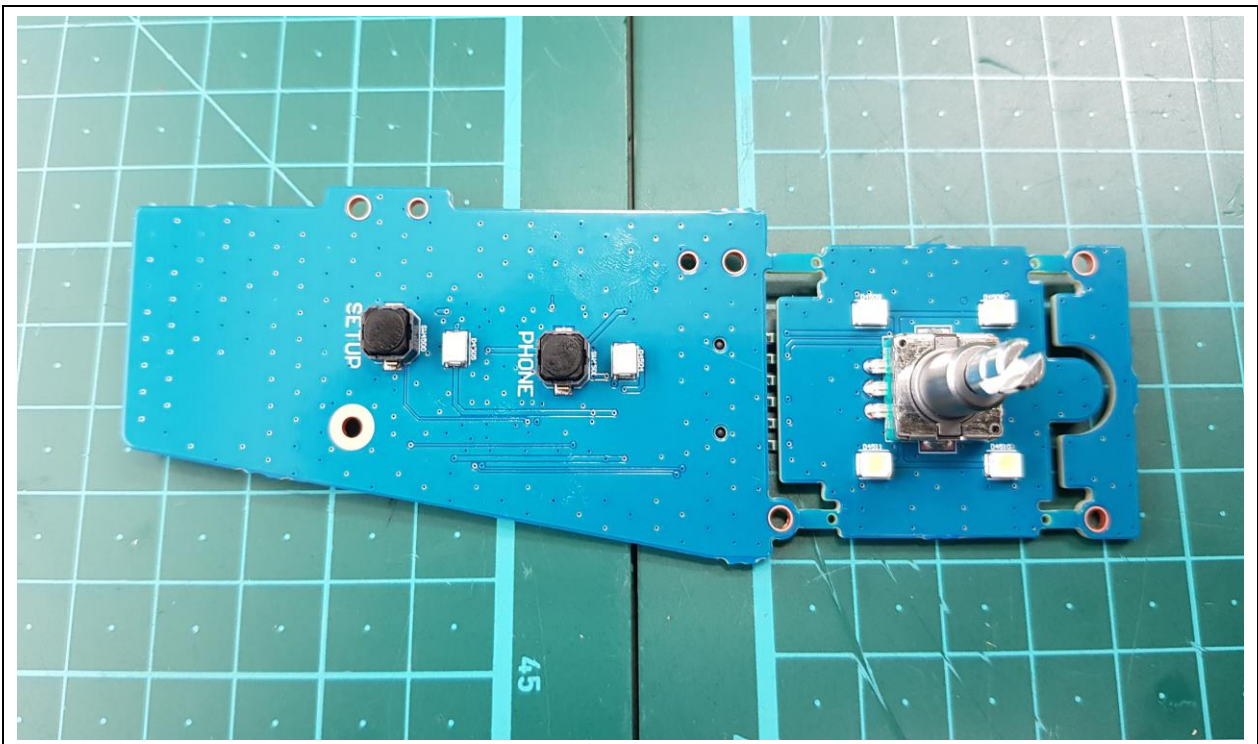


Internal Photos

Key Right PCB Front

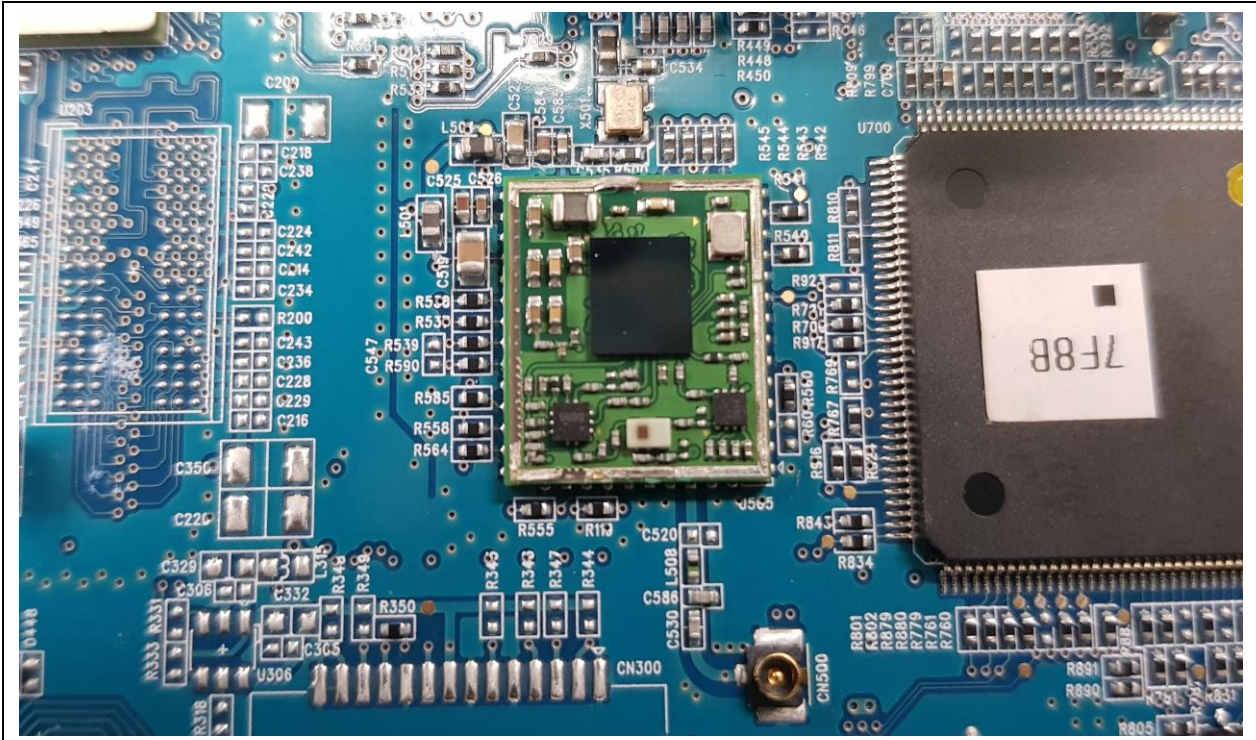


Key Right PCB Rear

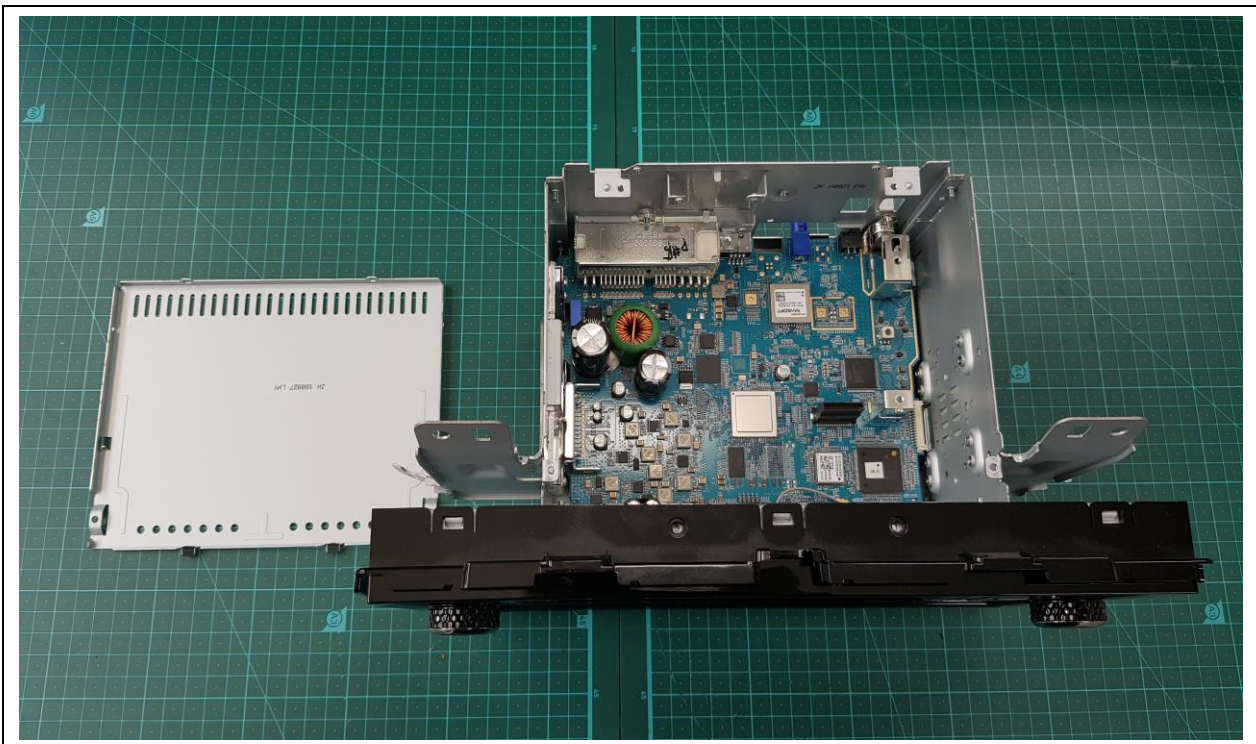


Internal Photos

RF PCB Front



Inside



Internal Photos

Antenna

