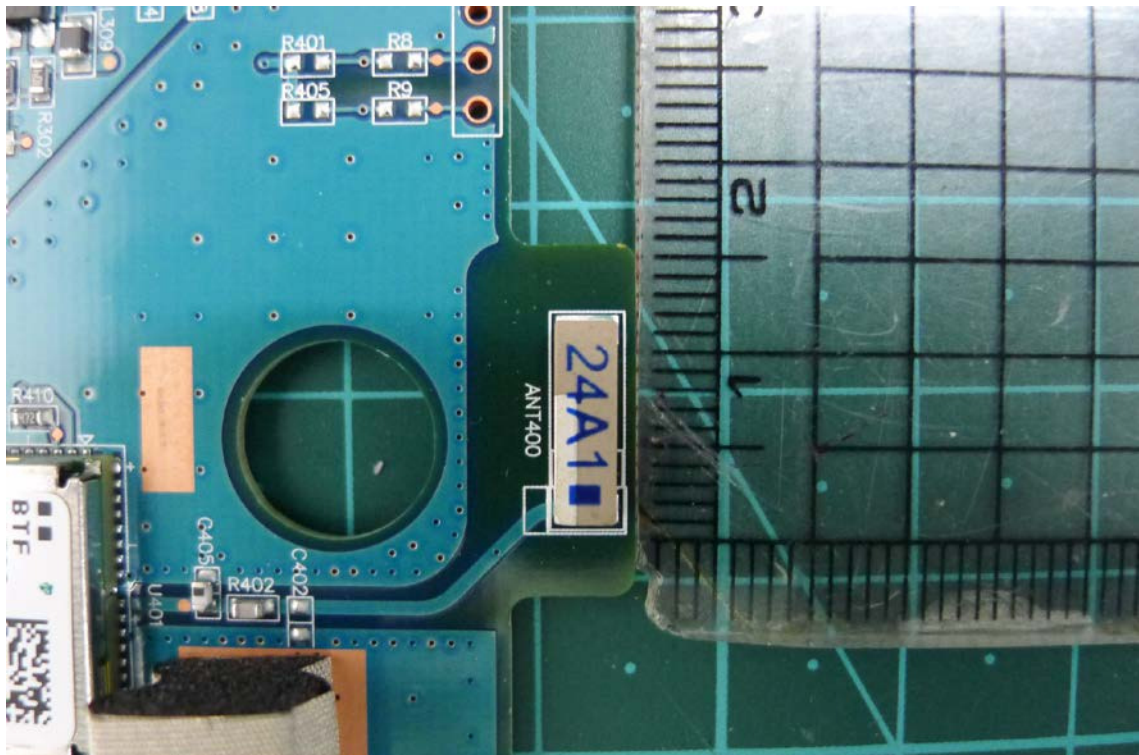
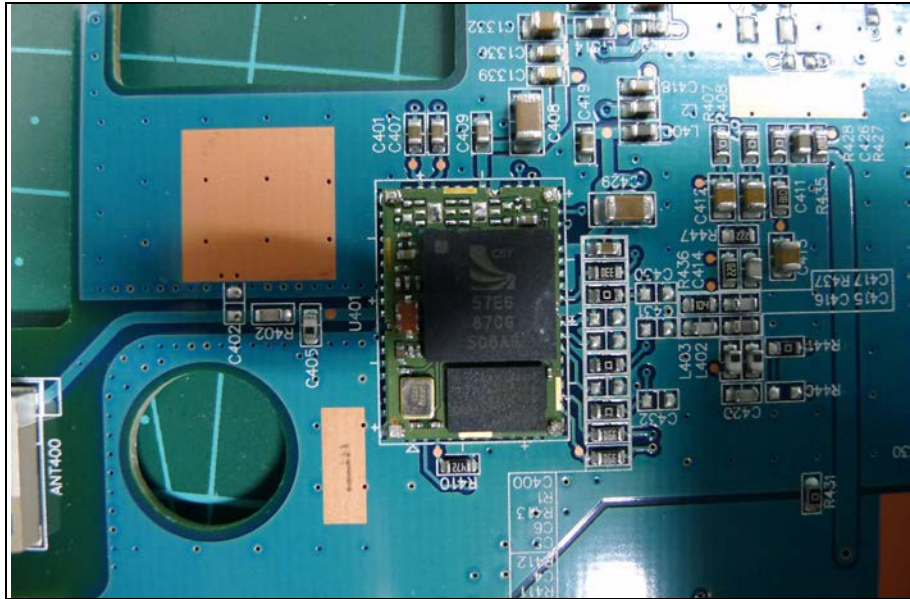


# ***Internal photos of EUT***

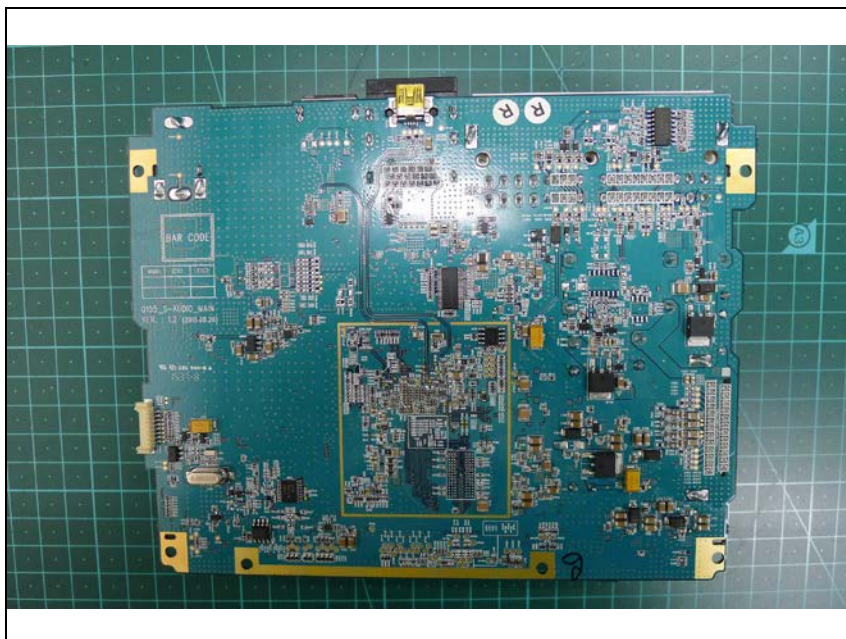
## *Bluetooth module / Antenna*



*Top view of Main PCB*

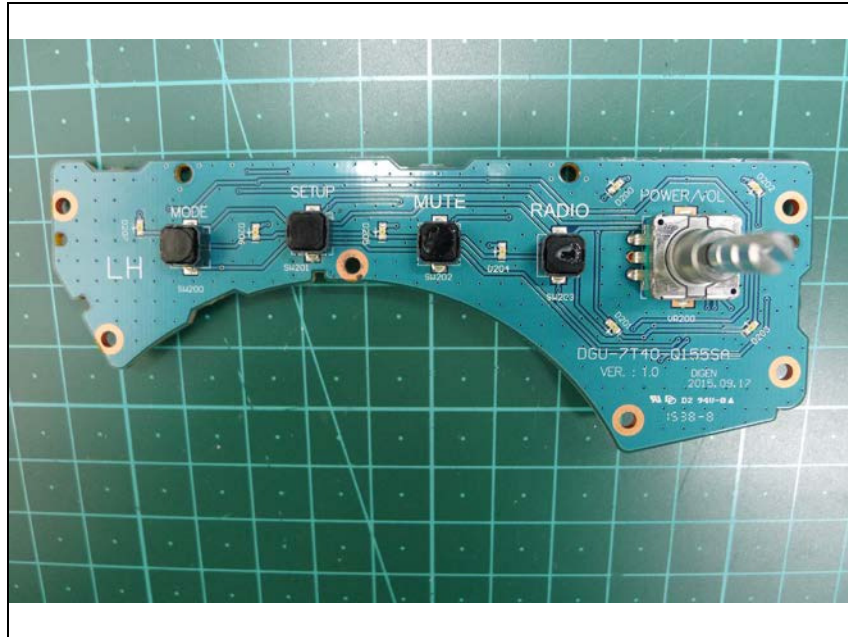


*Bottom view of Main PCB*

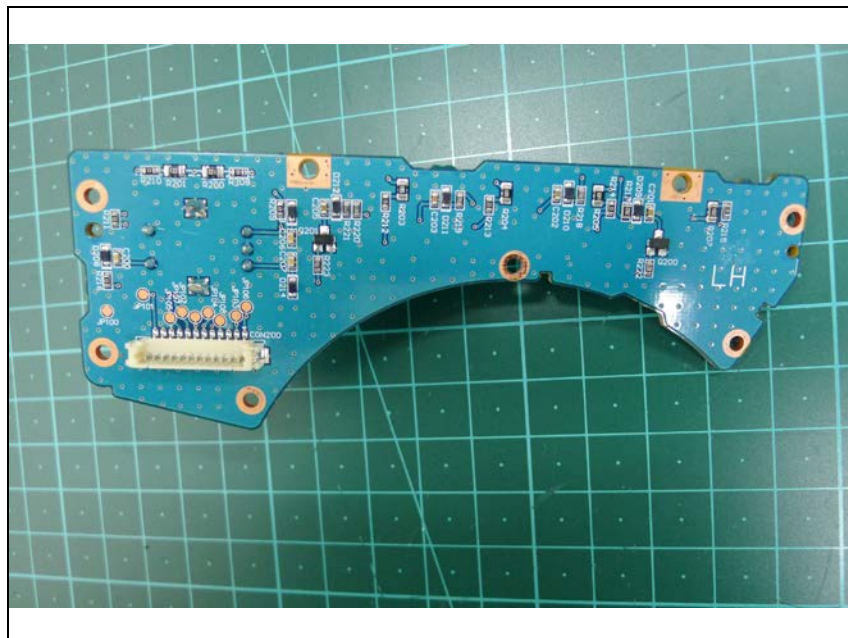




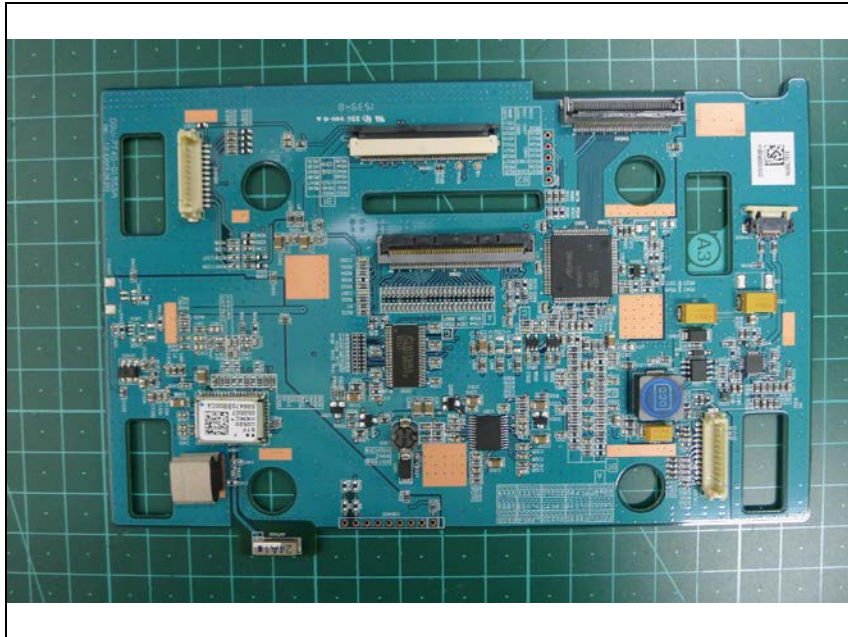
***Top view of Front A PCB***



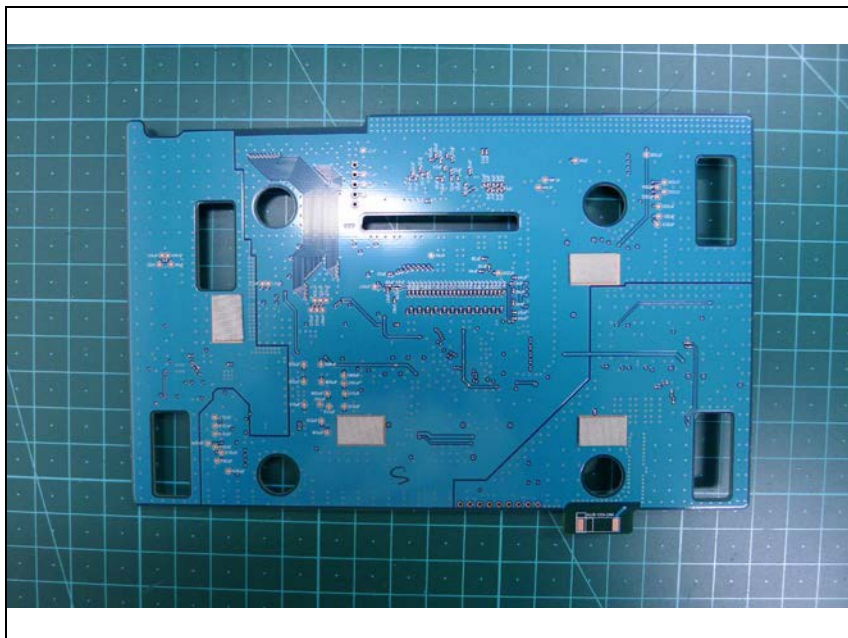
***Bottom view of Front A PCB***



*Top view of LCD PCB*



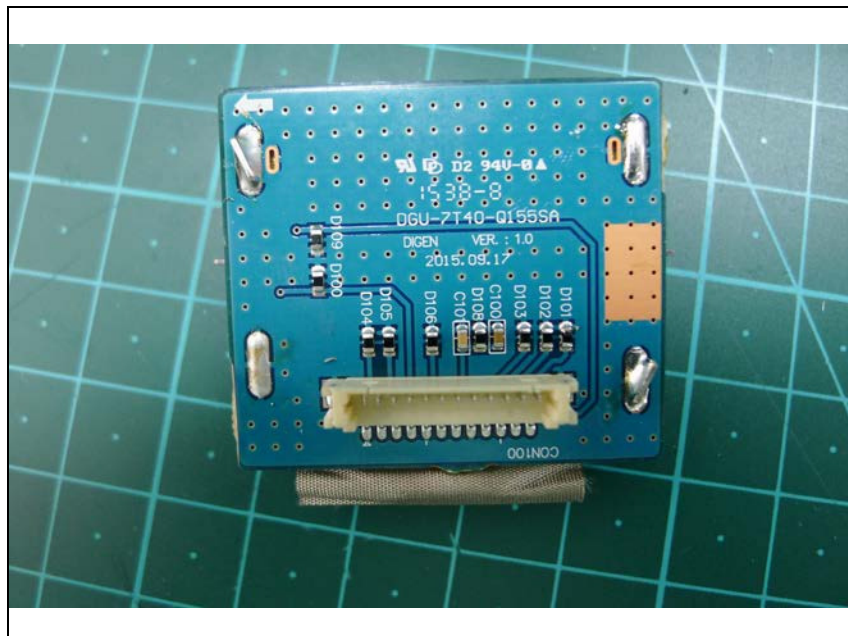
*Bottom view of LCD PCB*



### Top view of SD Card Reader PCB



### Bottom view of SD Card Reader PCB





*Top view of LCD*



*Bottom view of LCD*

