

WARRANTY

The customer shall benefit from the legal warranty against latent defects as specified in sections 1641 to 1649 of the Belgian Civil Code if the latent defect exists at the time of delivery and if the latent defect makes the unit unfit for the use for which it was designed or substantially reduces its use. Latent defects must be notified by registered letter to OTA keys within one month from the time the customer discovers it or ought reasonably to have discovered it. In the event that the customer is a consumer, OTA keys shall be liable to the customer for any non-conformity which exists at delivery and appears within two years thereof. Any non-conformity shall be notified by registered letter to OTA keys within one month from the time the customer discovers it.

DISCLAIMER

The information in this document is subject to change without notice and does not represent a commitment on the part of the vendor. No warranty or representation, either expressed or implied, is made with respect of quality, accuracy or fitness for any particular purpose of this document. Without written permission from OTA keys, any forms of reproduction, spreading, distribution are prohibited. OTA keys reserves the rights to modify or improve the product without any prior notification. In no event will the supplier be liable for direct, indirect or special, incidental or consequential damages arising out of the user or inability to use this product or documentation, even if advised of the possibility of such damages. This document contains materials protected by copyright.

BLUETOOTH

The Bluetooth® word mark and logos are owned by the Bluetooth® SIG, Inc. and any use of such marks by OTA keys is under license. Other trademarks and trade names are those of their respective owners.

CE

Hereby, OTA keys declares that this CarSharing Module is in compliance with essentials requirements and other relevant provisions of directive 1999/5/EC.

FCC (FEDERAL COMMUNICATIONS COMMISSION)

WARNING: This equipment may generate or use radio frequency energy. Changes or modifications to this equipment may cause harmful interference unless the modifications are expressly approved in the instruction manual. The user could lose the authority to operate this equipment if an unauthorized change or modification is made. The device complies with Part 15 of FCC's rules. Operation is subject to the following two conditions: (i) this device may not cause harmful interference and (ii) this device must accept ant interference received, including interference that may cause undesirable operation.

FCC RF EXPOSURE REQUIREMENTS

The antenna used with this module must be installed to provide a separation distance of at least 20 cm from all persons, and must not transmit simultaneously with any other antenna or transmitter except in accordance with FCC multi-transmitter product procedures.

CORRECT DISPOSAL OF THIS PRODUCT (WASTE ELECTRICAL AND ELECTRONICS EQUIPMENT)

This marking shown on the product or its literature indicates that it should not be disposed with other household wastes at the end of its working life. To prevent possible harm to the environment or human health from uncontrolled waste disposal, please separate this from other types of wastes and recycle it responsibly.

COPYRIGHTS

Copyright © 2015 OTA keys. All rights reserved. No part of this manual may be reproduced or transmitted in any means or for any purpose without the express written content of OTA keys. All trademarks, product names appearing in this document are registered property of their respective owners.

CE2200

WARNING

OTA keys S.A and its affiliates should not be held liable towards end-users for third parties prejudice caused by misuse of the product.

We advise our customers to have the CSM fitted by a professional.

CarSharing Module (CSM)

INSTALLATION GUIDE (September 2015 - v1.1)

INTRODUCTION

OTA keys is a virtual key enabler. More information on OTA keys and the [CarSharing Module](#) can be found on www.otakeys.com

CONTENT OF THE BOX

This box contains the following items:

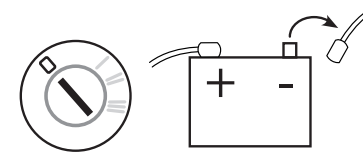
- 1 CarSharing Module
- 1 Power cable
- 1 Antenna
- 2 Wire taps
- 1 Installation guide

SPECIFICATIONS

Electric Power	12Vcc
Consumption in stand-by mode	< 8 mA
Operating temperature	-30°C = +70°C
Dimensions	135 * 57* 29 mm
Weight	120g
Data transmission	Bluetooth®

BEFORE YOU BEGIN

- We advise our customers to have the **CSM** fitted by a professional.
- Never remove the cover of the **CSM**.



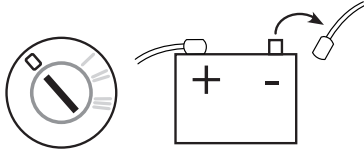
- Disconnect the battery of the car before beginning the installation of the **CSM**.
- Before you install the individual components, check that the installation area has been selected in such a way that:
 - the cable length is sufficient to connect later on every element: power cable and antenna (if necessary);
 - for a car equipped with a keyless start system, the location where you plan to install the **CSM** must be within the reception area of the keyless system of the car. Use therefore the original key and place it at the chosen installation area and check immediately that the engine can be started.
- Do not install any component in the airbag deployment area.
- Do not install the **CSM** against a large metal surface in the car.
- Once the installation is completed, make sure that no cables are pinched or trapped.
- In case you would like to buy additional keys and have them programmed to the vehicle's immobilizer system in the future, some manufacturers require that all original keys are present in the car in order to be able to get an additional key. It will be necessary that you participate in the coding of the new key with a virtual key being active and connected to the car to perform the actions required by the dealer.
- OTA keys is not responsible for the damage caused to the vehicle and / or accessories which are the result of not respecting the instructions in this manual.

IMPORTANT REMARKS

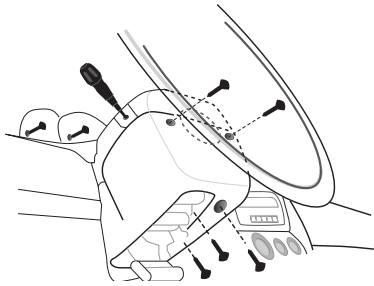
- Placing the **CSM** under or next to any large metal surface or an airbag could affect the reception of the **CSM**.
- With the **keyless start system**, the vehicle doors can be opened without need for the driver to physically push a button on the key fob to lock or unlock the doors. To start or to stop the engine, there is no need to insert a key in the barrel to turn on the ignition.
- Installation steps 1 and 2 (see below) must only be performed for cars not equipped with a keyless start system.** If the car is equipped with a keyless system, go directly to step 3.

INSTALLATION STEPS:

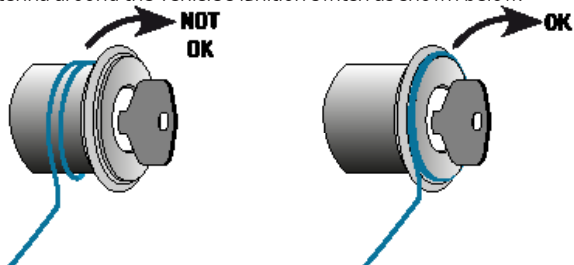
Disconnect the battery of the car.



- Disassemble the shroud for easy access to the vehicle's ignition switch. Pull the steering wheel in your direction to its maximum.

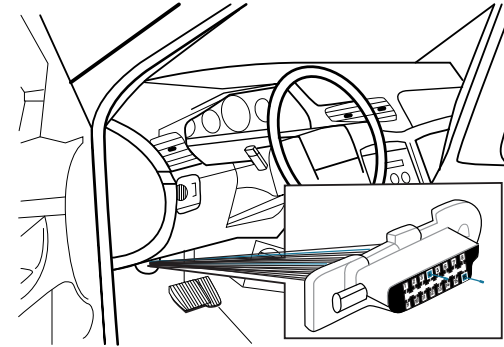


- Place the ring of the antenna around the vehicle's ignition switch as shown below.



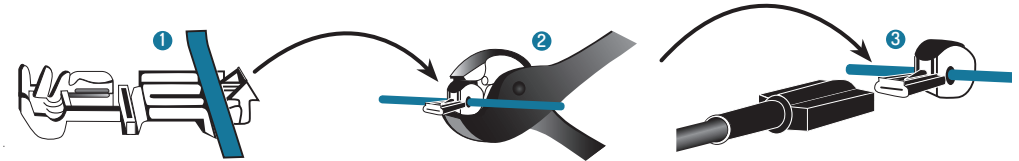
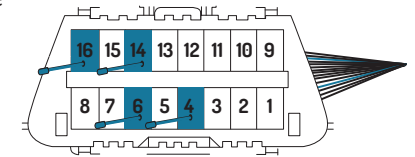
Fix and tape the ring around the ignition, excess cable can be taped together but may not be turned around (one rotation maximum). When using the ring method for installing the **CSM**, the ring **MUST** be taped in front of the factory receiver ring. It **CAN NOT** be on top of, or behind the factory receiver ring. See illustration above. The antenna cable must follow existing steering column cables to avoid rupture while closing the shroud or moving the steering wheel.

- Connect now the **CSM** in the car. We recommended to use the **CSM** wire taps supplied by OTA keys in order to connect the **CSM** to the back of the OBD. The OBD port is generally located in the driver cabin, between the door and the steering column.

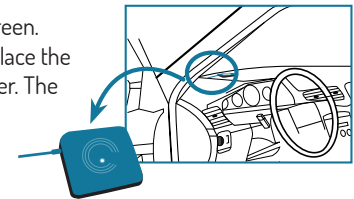


Use the supplied wire taps to wrap the **CSM** cables on the back of the OBD (see diagram below, points 1 to 3).

- Red cable (12V power) to wire 16 of OBD
- Black cable (ground) to wire 4 of OBD
- Yellow cable (CAN high) to wire 6 of OBD
- Green cable (CAN low) to wire 14 of OBD



- Place the NFC reader (optional) on the bottom left corner of the windscreen. Use the provided sticker and tape to fix the reader on the windscreen. Place the sticker on the windscreen and use the tape to fix the reader on the sticker. The white side of the reader must be faced to the car. For your own convenience, you can also decide to place the reader on the top left corner of the windscreen.



- Reconnect the vehicle battery.
- Validate that the **CSM** has a power connection (red leds on top). You are now ready to test the **CSM** with a virtual key on a smartphone equipped with the **SeKoR** mobile application.
- Fix the **CSM** within the dashboard..
- Reassemble the shroud.