

EXHIBIT C - EUT INTERNAL PHOTOGRAPHS

EUT (EP8100 U2) – Cover off View 1



EUT (EP8100 U2) – Cover off View 2



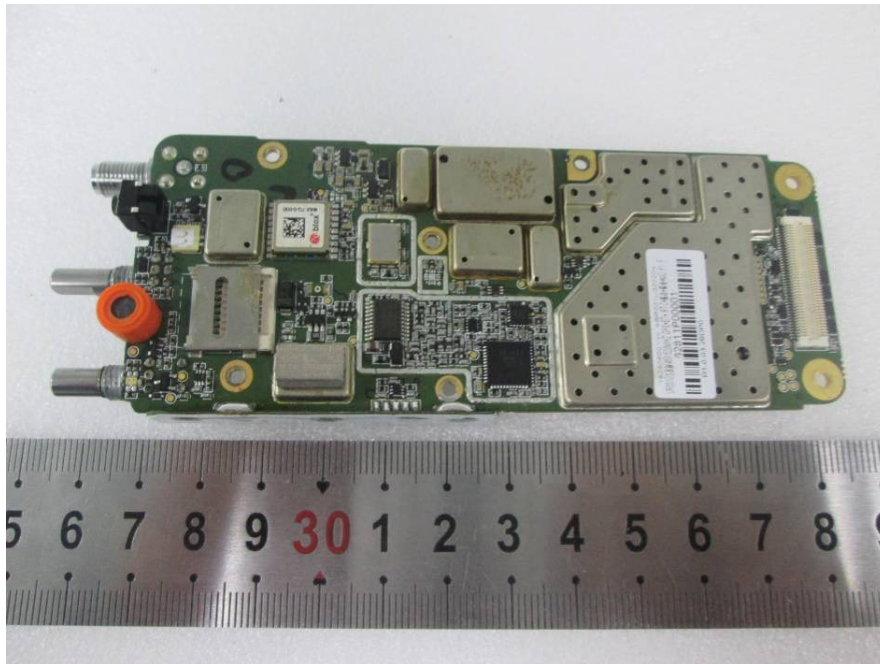
EUT (EP8100 U2) – Cover off View 3



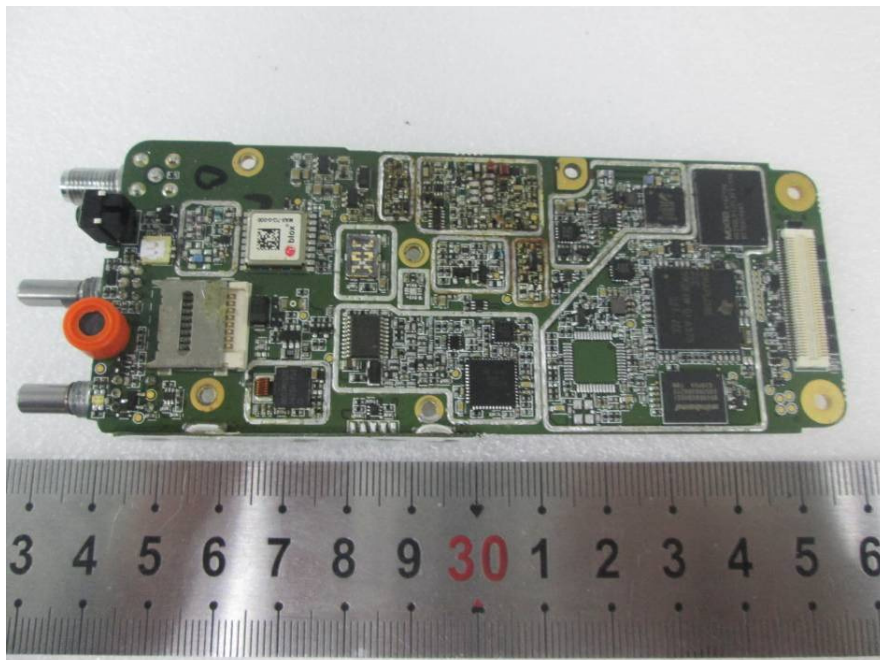
EUT (EP8100 U2) – Cover off View 4



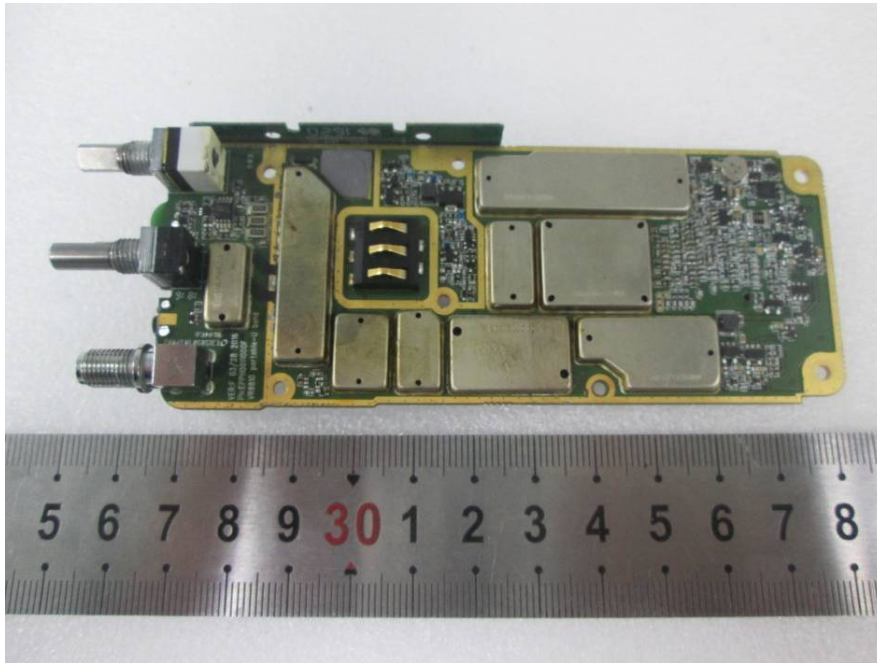
EUT (EP8100 U2) – Main Board Top View



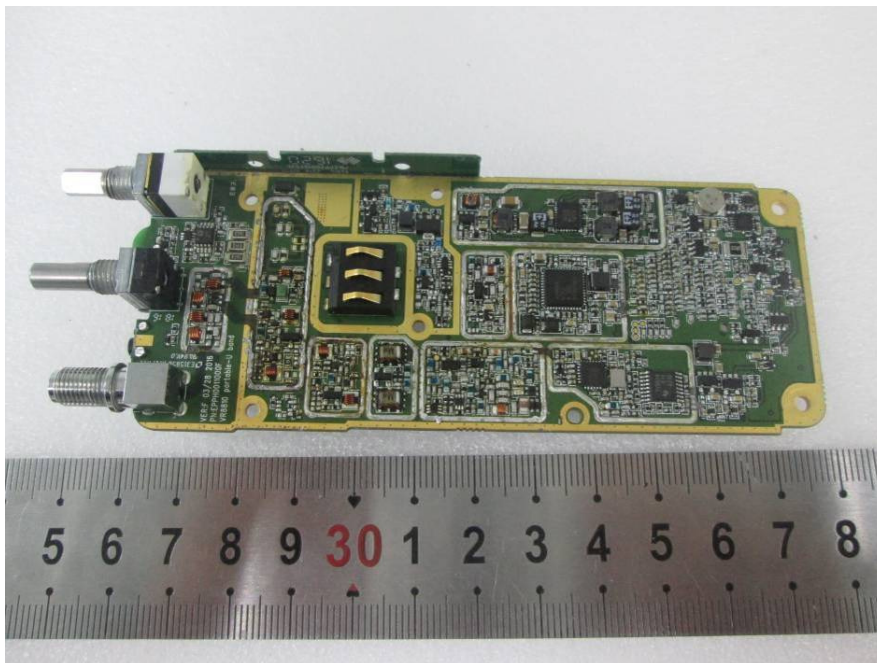
EUT (EP8100 U2) – Main Board Top Shilding off View



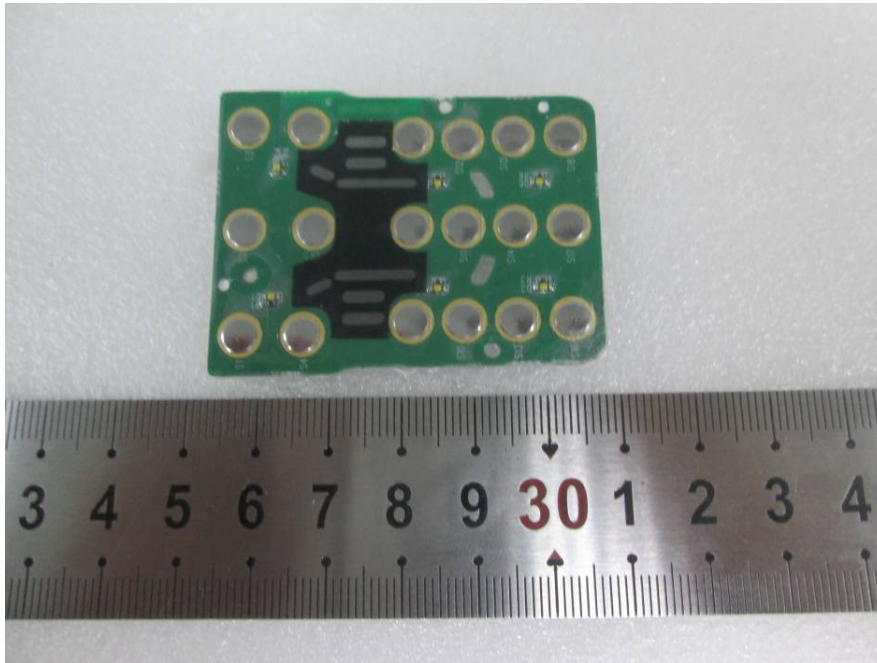
EUT (EP8100 U2) – Main Board Bottom View



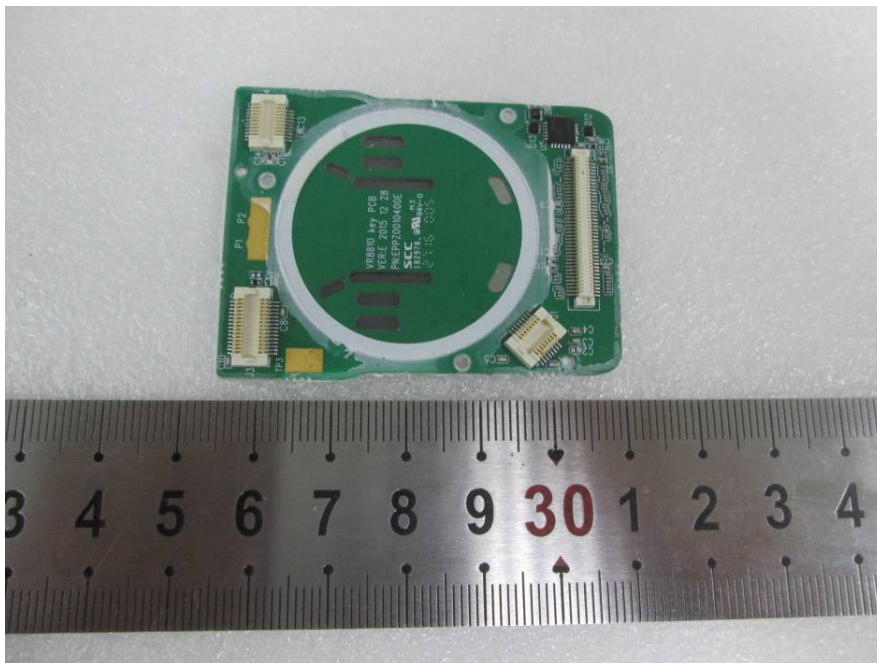
EUT (EP8100 U2) – Main Board Bottom Shielding off View



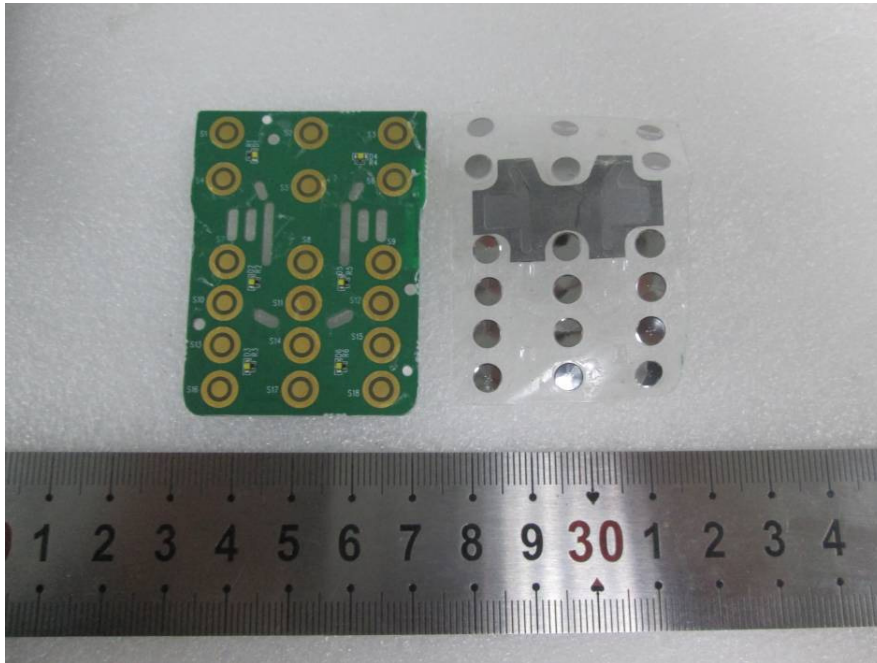
EUT – PCB Top View



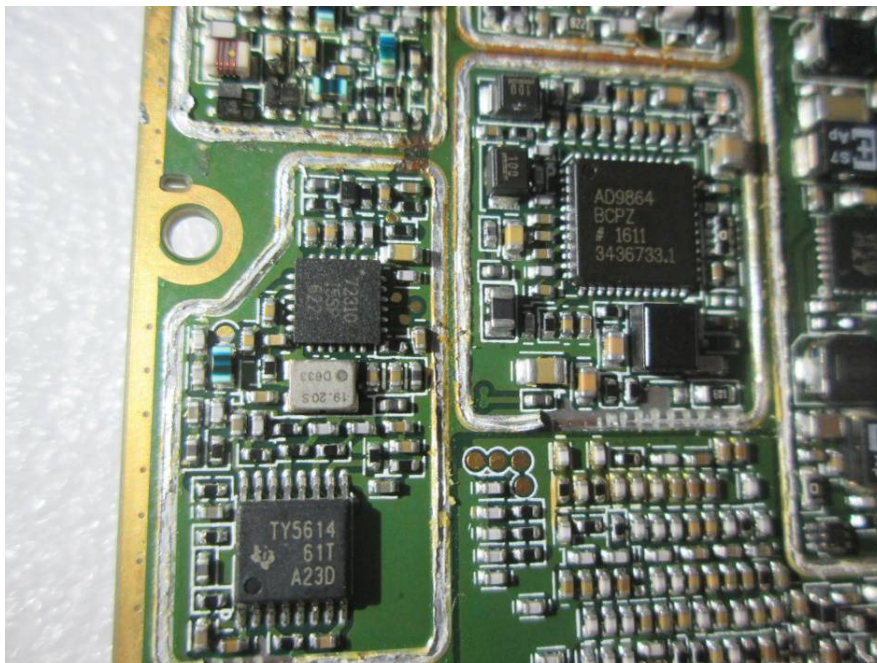
EUT – PCB Bottom View



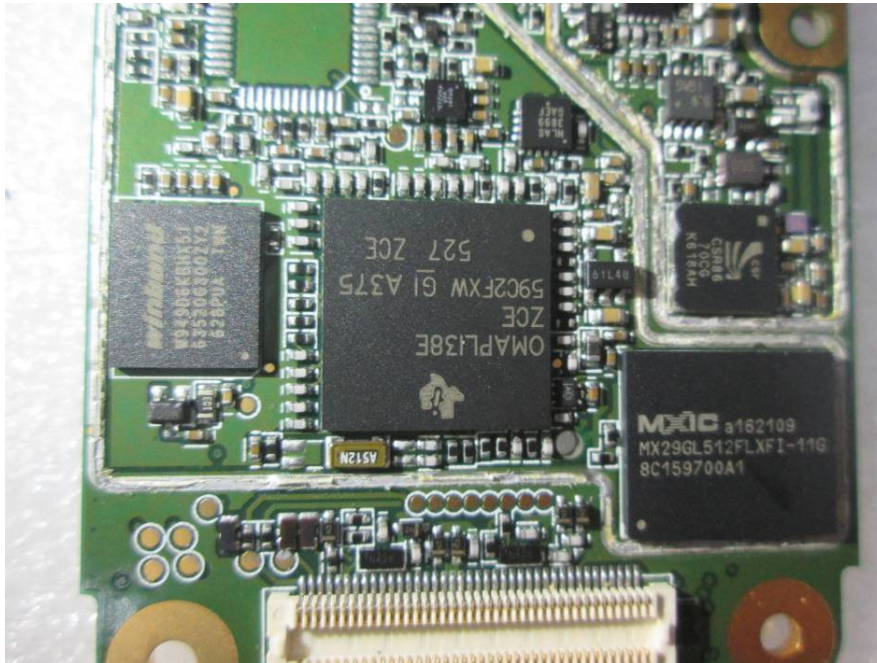
EUT – PCB Cover off View



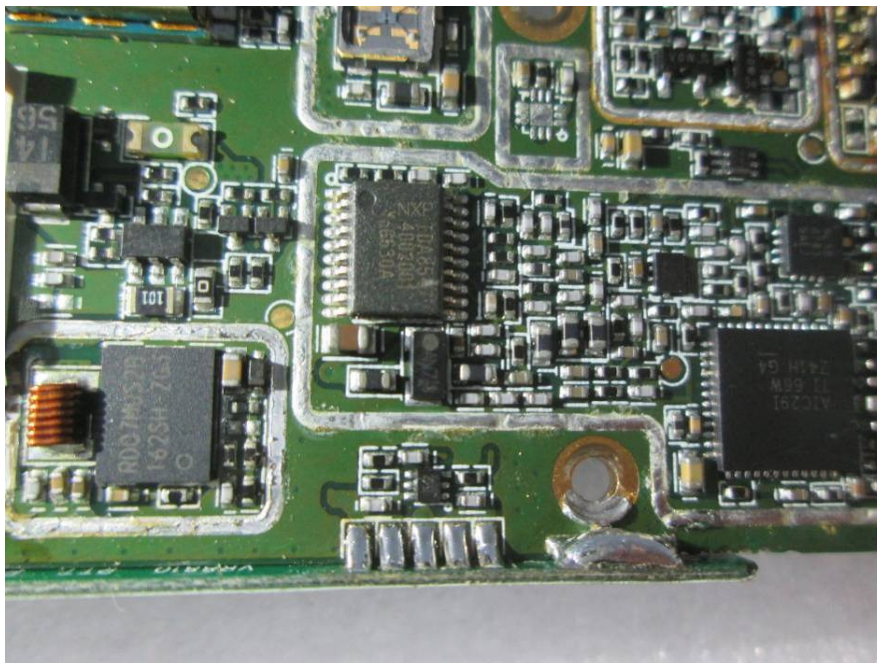
EUT (EP8100 U2) –IC Main View 1



EUT (EP8100 U2) -IC Main View 2



EUT (EP8100 U2) -IC Main View 3



EUT (EP8100 U2) –Battery View



EUT (EP8000 U2) – Cover off View 1



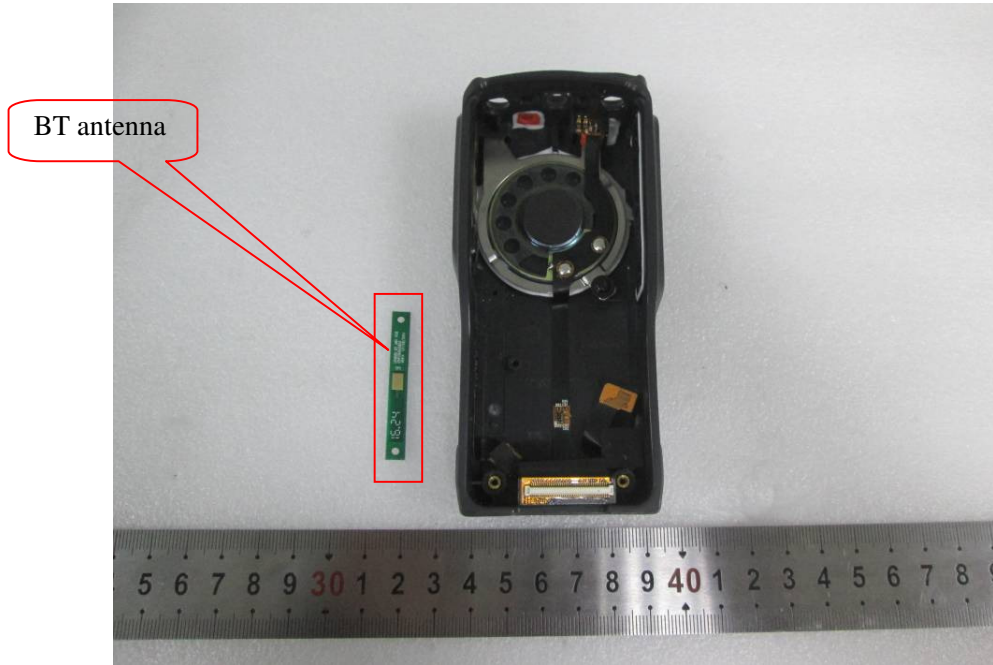
EUT (EP8000 U2) – Cover off View 2



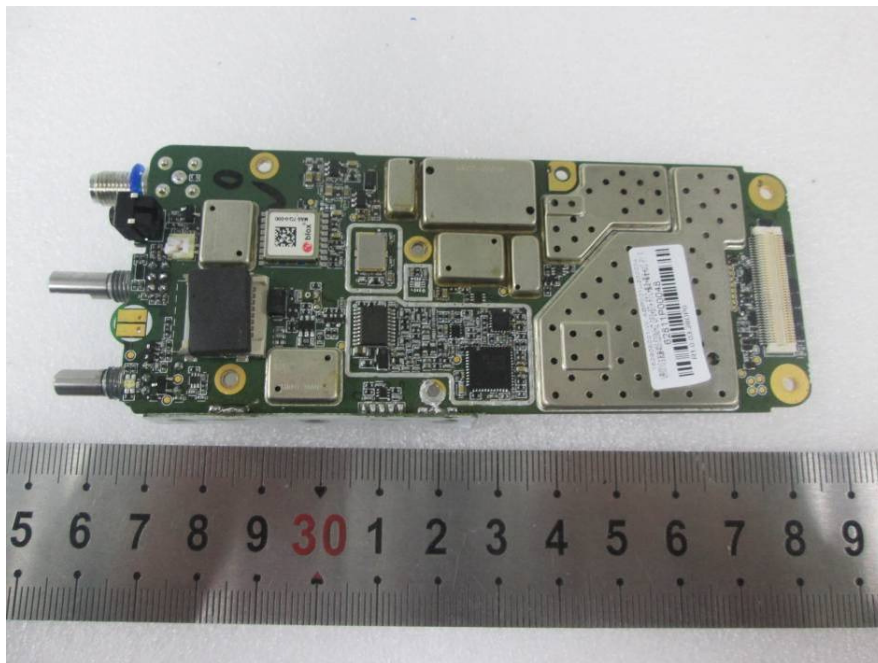
EUT (EP8000 U2) – Cover off View 3



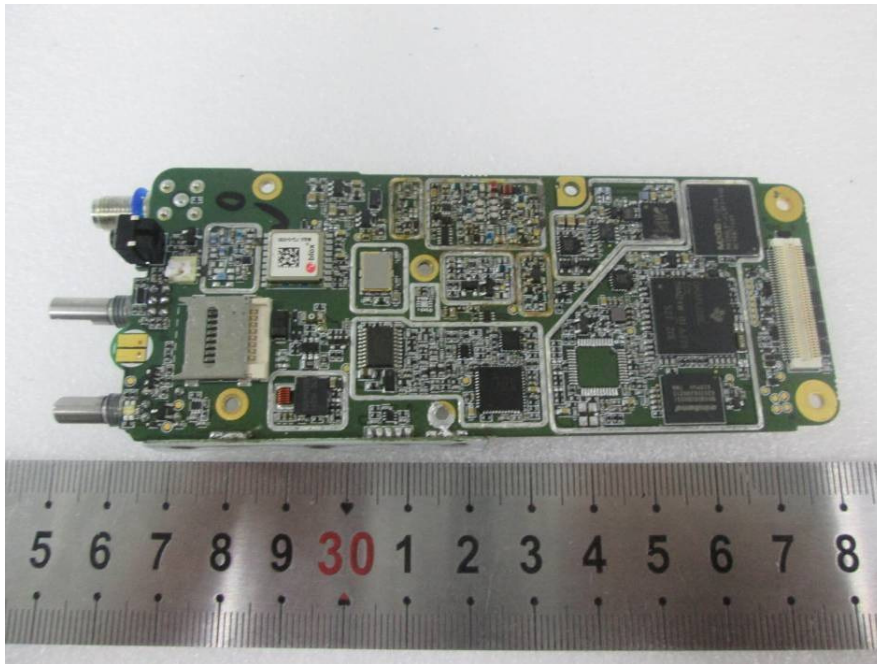
EUT (EP8000 U2) – Cover off View 4



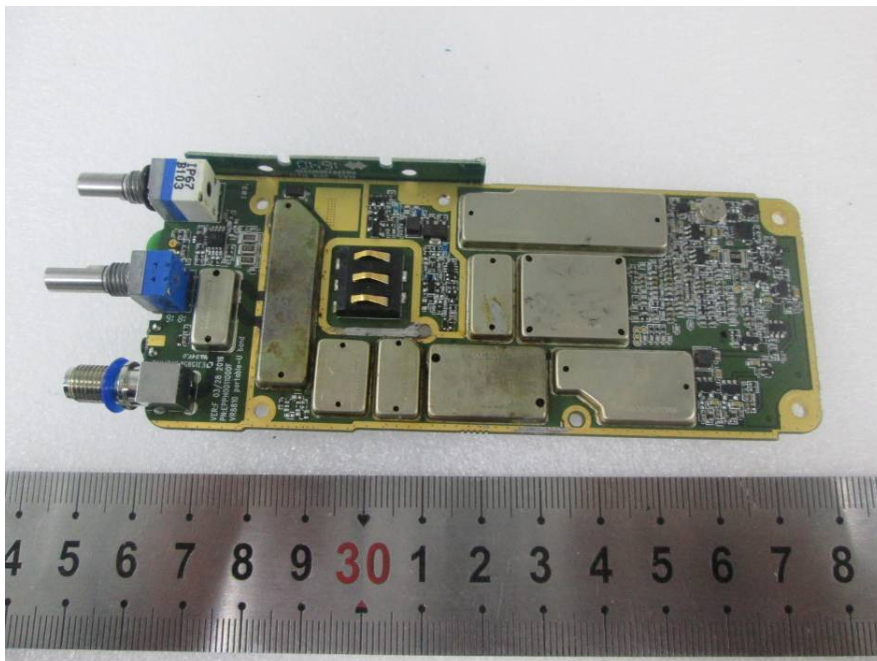
EUT (EP8000 U2) – Main Board Top View



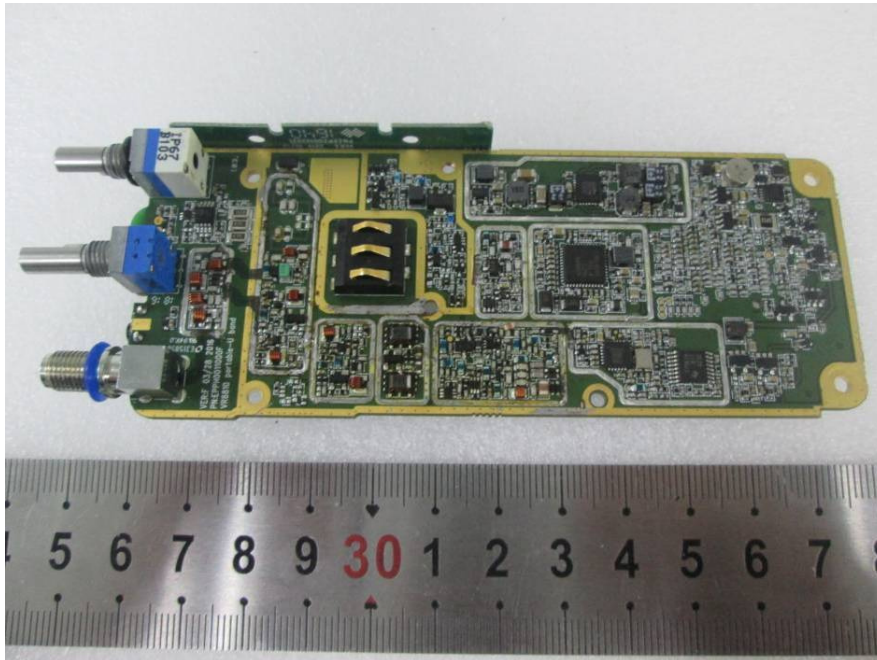
EUT (EP8000 U2) – Main Board Top Shilding off View



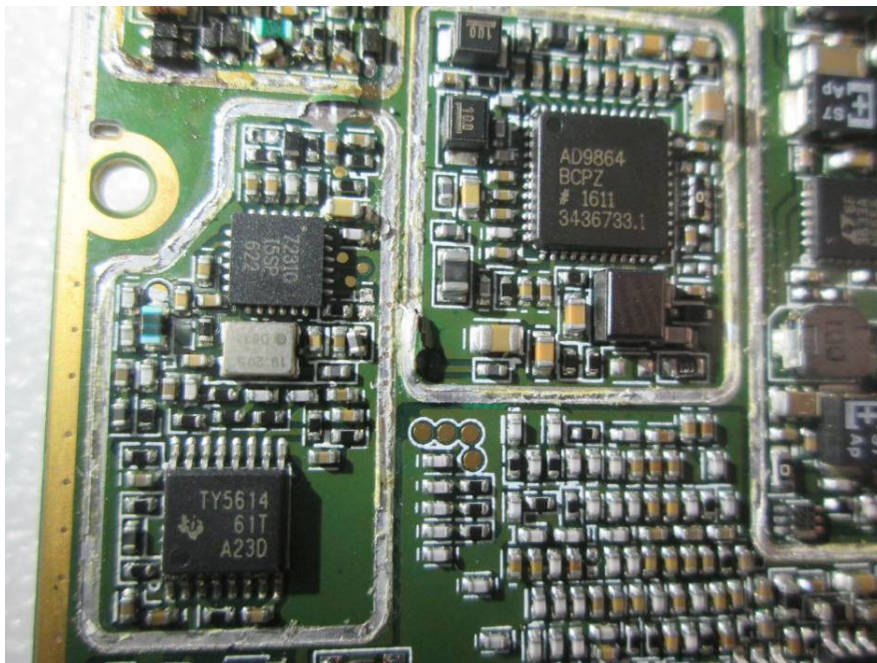
EUT (EP8000 U2) – Main Board Bottom View



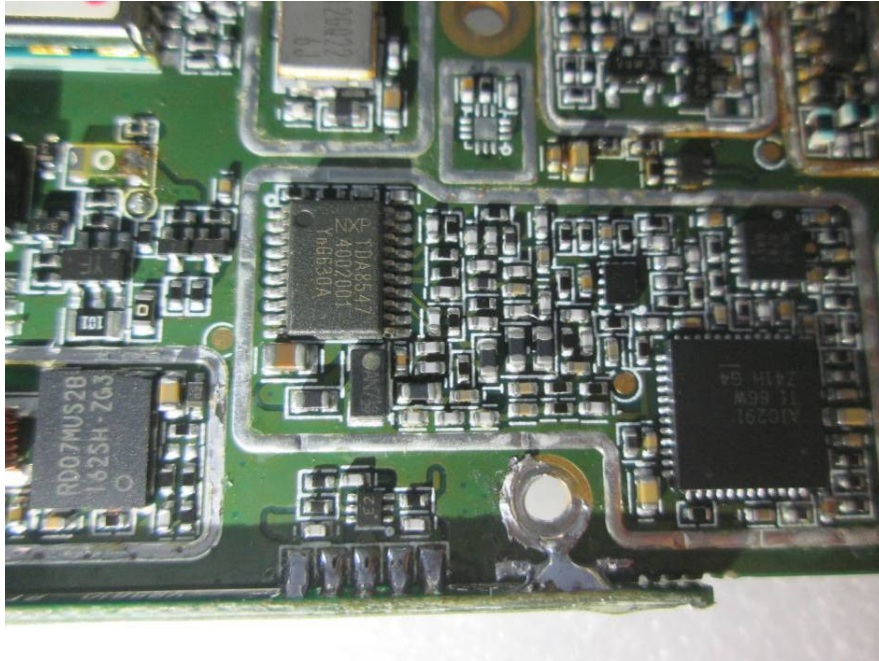
EUT (EP8000 U2) – Main Board Bottom Shielding off View



EUT (EP8000 U2) –IC Main View 1



EUT (EP8000 U2) -IC Main View 2



EUT (EP8000 U2) -IC Main View 3



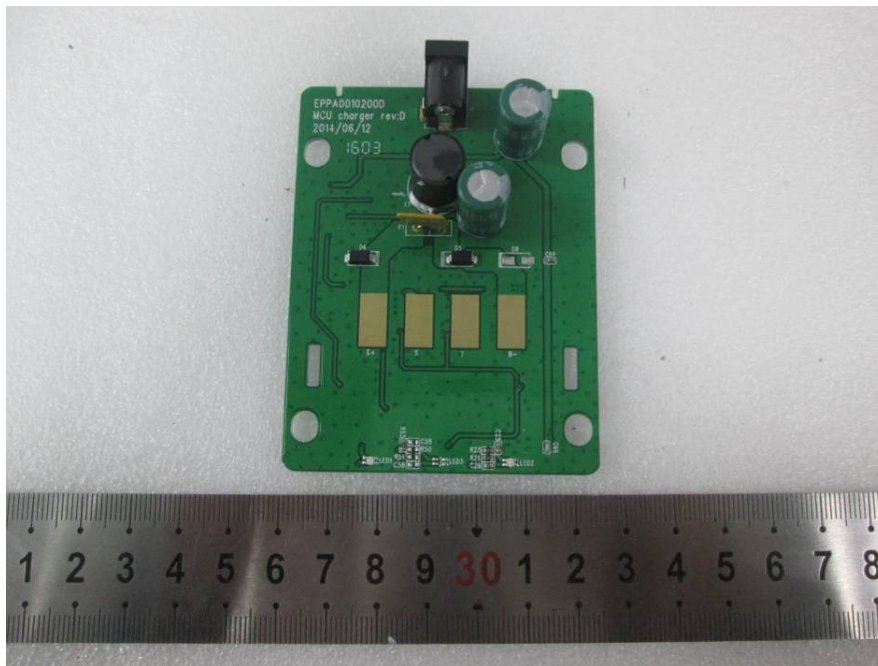
EUT (EP8000 U2) –Battery View



EUT –Charger Cover off View



EUT –Charger Main Board Top View



EUT –Charger Main Board Bottom View

