

## A. IMPORTANT NOTES

- 1) Do not repair, alter or disassemble unit in any way.
- 2) Do not submerge in water or drop water onto or into unit.
- 3) Do not leave unit outdoors or anywhere else unit might get wet.
- 4) Do not place unit on unstable shelf, sloped surface or any place the unit may fall.
- 5) Do not insert small objects into unit.
- 6) Do not use or store unit in dusty, oily, smoky or humid places.
- 7) Do not use chemicals (alcohol, benzine, thinner, etc) to clean unit.

## B. POWER SUPPLY

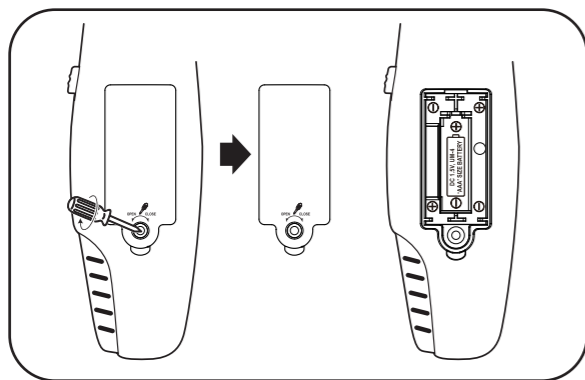
- 1) Battery installation
  - Unscrew and remove unit battery cover.
  - Insert 3 "AAA" alkaline batteries with correct polarity.
  - Replace battery cover and tighten screw.

### NOTES:

- If unit will not be used for a long period of time (30+ days) turn power switch to "OFF" and remove batteries to prevent leakage which may damage unit.
- When batteries are exhausted, the unit will stop automatically. Remove batteries promptly to prevent leakage which may damage unit.

### Important Safety Instructions:

- Replacement of batteries must be done by an adult.
- Batteries are to be inserted with the correct polarity
- Use only "AAA" batteries
- Do not use rechargeable batteries.
- Do not mix alkaline standard (carbon-zinc) and rechargeable (nickel-cadmium) batteries.
- Do not mix old and new batteries.
- Exhausted batteries should be removed from unit.
- Do not attempt to recharge non-rechargeable batteries.
- Do not short circuit the supply terminals.



1

## C. APPEARANCE/FUNCTIONS

1) ◀◀ In Music or Bluetooth Mode, press to choose previous music selection.

2) "Rec" Press and hold to start recording. (Maximum 100 seconds until "beep" sounds)

3) "Play" Press once to play back recorded sound, Press and hold for voice changer function.

4) 🖐️ Press once for applause sound.

5) ▶ Press to play.

6) ▶▶ In Music or Bluetooth Mode, press to choose next music selection.

7) "OFF-LOW-HIGH" Switch. Slide from "OFF" position to turn on microphone. Slide to "LOW/HIGH" position to choose microphone volume.

8) 🎵-Duet mode switch. Slide to choose between music mode or Bluetooth mode.

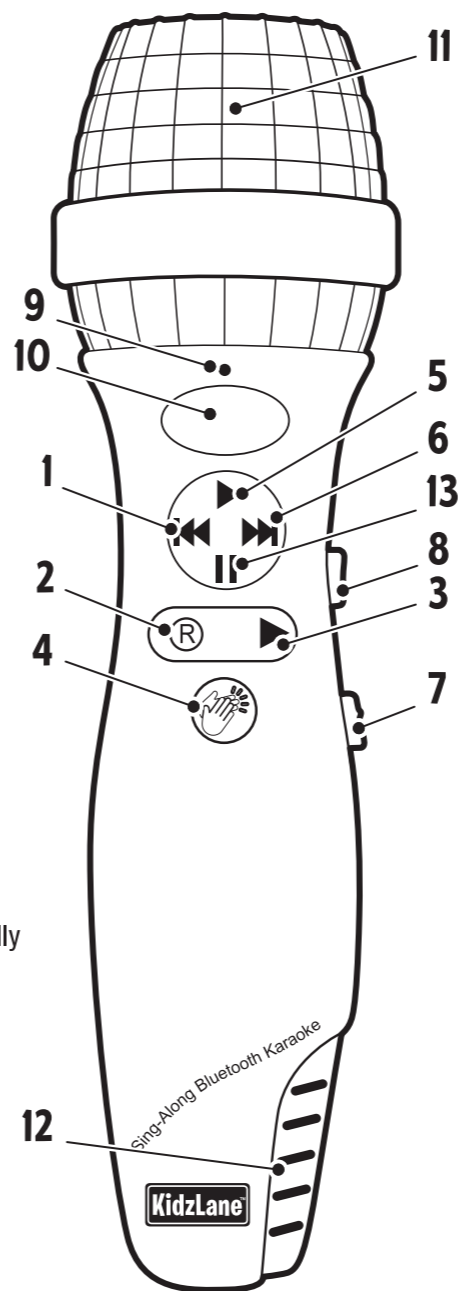
9) Bluetooth Indicator:  
Slow flashing means the microphone is playing music.  
Quick flashing means the microphone is pairing.  
Long bright light means the microphone is successfully paired with a mobile phone/device.

10) Flashing lights

11) Microphone

12) Speaker

13) || In Music or Bluetooth Mode, press to play/pause music.  
In Bluetooth Mode, press and hold || to erase any paired information/connection.



2

## D. BASIC FUNCTION

### Power on

- 1) Install batteries correctly.
- 2) Slide Selector Switch (7) to "LOW" or "HIGH" position. (Start-up tone will play)
- 3) Lights with 3 colors (blue, green, red) will flash when pressing any button or when any microphone function is active.

### Use of microphone

- 1) To use without music, just sing! Speaker (12) will amplify your voice.
- 2) To use with music, slide the Mode Switch (8) to the 🎵-Duet position or 🎧 position.  
NOTE: When singing, hold microphone approximately 1-2 inches from your mouth.

### Music and Duet Function

Your microphone comes with 10 pre-installed songs. You can listen to them with just the music, or with the lyrics being sung so you can sing along! To listen to any of these songs, follow these steps:

- 1) Slide Mode Switch (8) to 🎵-Duet position for the music only track or you can Slide Mode Switch (8) to the Duet position for the music and singing track.
- 2) Press ▶ (5) once to begin first song.
- 3) Press ◀ (1) or ▶▶ (6) to choose the previous or next track.
- 4) Press ▶ (5) again to pause the current song.  
NOTE: You can change between the Music and Duet function at any point during a song by moving the Slide Mode Switch (8) between the 🎵-Duet and Duet positions.

### Bluetooth Function

- Slide Mode switch (8) to 🎧 position, the Bluetooth indicator (9) will flash fast.
- Enter the Bluetooth interface of the mobile phone/wireless device, choose "search for device" or "search for audio".
- When Pairing code "KL0516" shows on the display of the mobile phone/device, select the "KIDZ0510" for pairing
- When pairing is successful, you will hear a "beep" from the microphone, the bluetooth indicator (9) will show long bright light.
- Press ▶ (5) once to play music, press again to pause music. Press ▶▶ (6) to choose next track or press ◀ (1) to choose the previous track.
- When playing music, the Bluetooth indicator will flash slowly.
- The effective distance between the unit and bluetooth device is around 50 feet; when Bluetooth device moves past 50 feet, the connection will be lost and can be restored if Bluetooth device moves back within 50 foot range (under auto-connect status).
- When turning the microphone off and on again, it will automatically search and connect to the last Bluetooth device that was successfully connected.
- To erase the current Bluetooth pairing information, press and hold ▶▶ (5) button.
- When the microphone is successfully connected to one mobile phone, it can not be connected to other mobile phone/device until the pairing information is erased.

### Recording your voice

- 1) To record your voice without music, press and hold Rec Button (2) when music is off.

3

# Bluetooth Sing-A-Long Microphone

**Item # KL-0516**  
**Battery Operated**  
(TO BE USED UNDER ADULT SUPERVISION)



**Important Message:**

Thank You for purchasing the KIDZLANE Bluetooth Sing-A-Long Microphone. Please take a moment to read these instructions to insure safe and proper operation of product. Please keep packaging for future reference as it contains important information.

**F. TROUBLESHOOTING:**

• If there is any trouble with functions, such as the buttons do not respond, abnormal playback, etc., please turn power off and then on again.

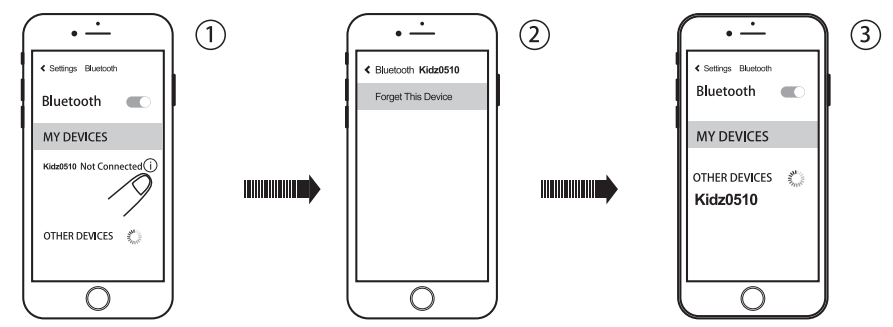
Symptom	Solution
No Power	Check that the batteries are installed correctly.
	Replace exhausted batteries.
	Make sure SELECTION switch (7) is switched to “LOW” or “HI” position.
No Sound	Make sure microphone power is switched “ON”.

**NOTE:**

- When speaking into microphone, aim your mouth about 1-2 inches away from the top of microphone to avoid any liquid from dropping into microphone. This could damage the product. Slide SELECTION switch (7) to the “OFF” position when not in use.
- When using Bluetooth mode, if Bluetooth connection failed or disconnected, please take below steps to correct: **Step 1** - turn off Microphone (A) and switch to music mode (B); turn the power on again (C) and switch back to Bluetooth mode (D). Now the Microphone is in standby status.



**Step 2** - delete paired information, select forget the pair code of Microphone device (1 & 2), then re-select other devices (3), now re-connect Bluetooth to Microphone using “KL0516”.



Not suitable for children under 3 years old due to small parts - choking hazard. Please keep packaging for future reference. Colors and contents may vary from shown. Adult supervision is recommended.

Imported by  
**NESSTOY**  
BROOKLYN, NY 11205  
www.nesstoy.com  
© 2018 NESSTOY  
Made in China 062018-101

- To record your voice with music, press and hold REC BUTTON (2) when singing and playing music from Music Mode or Bluetooth Mode.
  - After 100 seconds of recording, microphone will emit a beep sound and recording will stop. Beep will also sound if REC BUTTON (2) is released before 100 seconds.
- NOTE: New recording will delete previous recordings.

**Listening to recording**

To listen to your recording in Music or Bluetooth Mode, press PLAY BUTTON (3) at anytime. If music is playing from Music Mode or Bluetooth Mode, it will stop when the recording starts playing.

**Using the Voice Changer**

To hear a fun version of your recording follow these steps.

- Press PLAY BUTTON (3) to listen to your recording
- While the recording is playing, keep PLAY BUTTON (3) pressed down.

**Applause**

Press 🎵 BUTTON (4) once to hear the applause at any time the microphone is powered on. During music playback from Bluetooth or pre-installed songs, press 🎵 BUTTON (4) and the applause will work together with the music.

**Power Saving Mode**

In Music Mode, after 20 minutes of no activity, the microphone will beep 3 times, turn off and go into power saving mode. Press any key to wake up.  
In Bluetooth Mode, if music is playing from mobile phone or other wireless device or not, after 20 minutes of no activity, the microphone will beep 3 times, turn off and go into power saving mode. Press any key to re-enter into Bluetooth pairing.

**Low Batteries**

When batteries are weak, the 3 lights (10) will flash faster than normal and the microphone will beep 2 times and power off.

**E. TECHNICAL INFORMATION**

Bluetooth Specification	Bluetooth v2.1+ EDR
Power Supply	Battery: 3x “AAA” batteries
Microphone power output	Approximately 1.5W
Speaker power output	Approximately 0.25W
Operating environmental temperature	-5 to 40° C

Product description: Sing-with-me Bluetooth Microphone

Model name: 0516

FCC ID: 2AE67-0516

Warning: Changes or modifications to this unit not expressly approved by the party responsible for compliance could void the user's authority to operate the equipment.

NOTE: This equipment has been tested and found to comply with the limits for a Class B digital device, pursuant to Part 15 of the FCC Rules. These limits are designed to provide reasonable protection against harmful interference in a residential installation. This equipment generates, uses and can radiate radio frequency energy and, if not installed and used in accordance with the instructions, may cause harmful interference to radio communications.

However, there is no guarantee that interference will not occur in a particular installation. If this equipment does cause harmful interference to radio or television reception, which can be determined by turning the equipment off and on, the user is encouraged to try to correct the interference by one or more of the following measures:

- Reorient or relocate the receiving antenna.
- Increase the separation between the equipment and receiver.
- Connect the equipment into an outlet on a circuit different from that to which the receiver is connected.
- Consult the dealer or an experienced radio/TV technician for help.

"This device complies with FCC radiation exposure limits set forth for general population (uncontrolled exposure).

This device must not be collocated or operating in conjunction with any other antenna or transmitter."

This device complies with part 15 of the FCC Rules. Operation is subject to the following two conditions: (1) This device may not cause harmful interference, and (2) this device must accept any interference received, including interference that may cause undesired operation.

Changes or modifications not expressly approved by the party responsible for compliance could void the user's authority to operate the equipment.