
SAR Test Report

Report No.: AGC00146150701FH01

FCC ID : 2AE45NOIT18

APPLICATION PURPOSE : Original Equipment

PRODUCT DESIGNATION : 2G GSM Mobile Phone

BRAND NAME : Budget

MODEL NAME : Noit 18

CLIENT : NOITAVONNE INSTRUMENTS INC.

DATE OF ISSUE : July 23,2015

STANDARD(S) : IEEE Std. 1528:2003
IEEE Std. 1528a:2005
FCC 47CFR § 2.1093
IEEE/ANSI C95.1:1992

REPORT VERSION : V1.0

Attestation of Global Compliance(Shenzhen) Co., Ltd.

CAUTION:

This report shall not be reproduced except in full without the written permission of the test laboratory and shall not be quoted out of context.



Report Revise Record

| Report Version | Revise Time | Issued Date | Valid Version | Notes |
|----------------|-------------|--------------|---------------|-----------------|
| V1.0 | / | July 23,2015 | Valid | Original Report |

Test Report Certification

| | | |
|-----------------------|---|---|
| Applicant Name | : | NOITAVONNE INSTRUMENTS INC. |
| Applicant Address | : | 11104 W.Airport Blvd.#225 Stafford,TX 77477,USA |
| Manufacturer Name | : | SHENZHEN YOUSHI TECHNOLOGY CO., LTD. |
| Manufacturer Address | : | No19, Baofa Street, Jewel Science Park, Building Qiaojiao West Road, Jiaoyitang Village, Tangxia Town, Dongguan City |
| Product Designation | : | 2G GSM Mobile Phone |
| Brand Name | : | Budget |
| Model Name | : | Noit 18 |
| Different Description | | N/A |
| EUT Voltage | : | DC3.7V by battery |
| IMEI | | 358445060363772 |
| Applicable Standard | : | IEEE Std. 1528:2003 IEEE Std. 1528a:2005 FCC 47CFR § 2.1093 IEEE/ANSI C95.1:1992 |
| Test Date | : | July 20,2015 to July 22,2015 |
| Performed Location | | Attestation of Global Compliance(Shenzhen) Co., Ltd. 2 F, Building 2, No.1-No.4, Chaxi Sanwei Technical Industrial Park, Gushu, Xixiang Street, Bao'an District, Shenzhen, China |
| Report Template | | AGCRT-US-2.5G/SAR (2015-05-01) |

Tested By

Bobby Wang

Bobby Wang July 23,2015

Checked By

Angela Li

Angela Li July 23,2015

Authorized By

Solger Zhang

Solger Zhang July 23,2015

TABLE OF CONTENTS

| | |
|---|-----------|
| 1. SUMMARY OF MAXIMUM SAR VALUE | 5 |
| 2. GENERAL INFORMATION..... | 6 |
| 2.1. EUT DESCRIPTION..... | 6 |
| 3. SAR MEASUREMENT SYSTEM..... | 8 |
| 3.1. THE DASY5 SYSTEM USED FOR PERFORMING COMPLIANCE TESTS CONSISTS OF FOLLOWING ITEMS..... | 8 |
| 3.2. DASY5 E-FIELD PROBE | 9 |
| 3.3. DATA ACQUISITION ELECTRONICS DESCRIPTION | 9 |
| 3.4. ROBOT..... | 10 |
| 3.5. LIGHT BEAM UNIT | 10 |
| 3.6. DEVICE HOLDER | 11 |
| 3.7. MEASUREMENT SERVER..... | 11 |
| 3.8. PHANTOM..... | 12 |
| 4. SAR MEASUREMENT PROCEDURE..... | 13 |
| 4.1. SPECIFIC ABSORPTION RATE (SAR) | 13 |
| 4.2. SAR MEASUREMENT PROCEDURE | 14 |
| 4.3. RF EXPOSURE CONDITIONS..... | 16 |
| 5. TISSUE SIMULATING LIQUID..... | 18 |
| 5.1. THE COMPOSITION OF THE TISSUE SIMULATING LIQUID..... | 18 |
| 5.2. TISSUE DIELECTRIC PARAMETERS FOR HEAD AND BODY PHANTOMS..... | 18 |
| 5.3. TISSUE CALIBRATION RESULT..... | 19 |
| 6. SAR SYSTEM CHECK PROCEDURE..... | 20 |
| 6.1. SAR SYSTEM CHECK PROCEDURES..... | 20 |
| 6.2. SAR SYSTEM CHECK..... | 21 |
| 7. EUT TEST POSITION..... | 22 |
| 7.1. DEFINE TWO IMAGINARY LINES ON THE HANDSET..... | 22 |
| 7.2. CHEEK POSITION | 23 |
| 7.3. TITLE POSITION | 23 |
| 7.4. BODY WORN POSITION..... | 24 |
| 8. SAR EXPOSURE LIMITS | 25 |
| 9. TEST EQUIPMENT LIST | 26 |
| 10. MEASUREMENT UNCERTAINTY | 27 |
| 11. CONDUCTED POWER MEASUREMENT | 30 |
| 12. TEST RESULTS..... | 33 |
| 12.1. SAR TEST RESULTS SUMMARY | 33 |
| APPENDIX A. SAR SYSTEM CHECK DATA | 40 |
| APPENDIX B. SAR MEASUREMENT DATA..... | 44 |
| APPENDIX C. TEST SETUP PHOTOGRAPHS & EUT PHOTOGRAPHS | 66 |
| APPENDIX D. CALIBRATION DATA..... | 66 |

1. SUMMARY OF MAXIMUM SAR VALUE

The maximum results of Specific Absorption Rate (SAR) found during testing for EUT are as follows:

| Frequency Band | Highest Reported 1g-SAR(W/Kg) | |
|---------------------------|-------------------------------|---------------------------------|
| | Head | Body-worn(with 10mm separation) |
| GSM 850 | 0.305 | 1.167 |
| PCS 1900 | 0.620 | 1.309 |
| Simultaneous Reported SAR | 1.342 | |

This device is compliance with Specific Absorption Rate (SAR) for general population/uncontrolled exposure limits (1.6W/Kg) specified in IEEE Std. 1528:2003; IEEE1528a-2005; FCC 47CFR § 2.1093; IEEE/ANSI C95.1:1992 and the following specific FCC Test Procedures:

- KDB 447498 D01 General RF Exposure Guidance v05r02
- KDB 648474 D04 Handset SAR v01r02
- KDB 865664 D01 SAR measurement 100 MHz to 6 GHz v01r03
- KDB 941225 D01 3G SAR Procedures v03

2. GENERAL INFORMATION

2.1. EUT Description

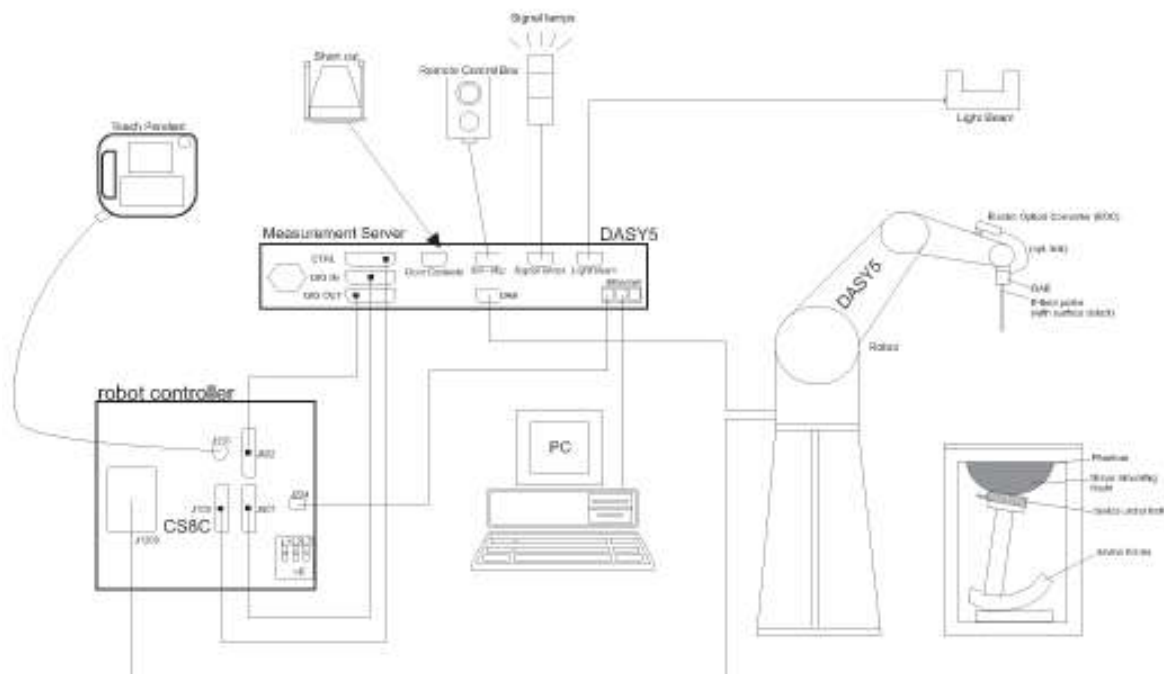
| General Information | |
|---|---|
| Product Designation | 2G GSM Mobile Phone |
| Test Model | Noit 18 |
| Hardware Version | H023_MAIN_V2.0 |
| Software Version | H023_S015_BUDGET_SINGLE_SIM_20150610_V102_rda_total.bin |
| Device Category | Portable |
| RF Exposure Environment | Uncontrolled |
| Antenna Type | Internal |
| GSM and GPRS | |
| Support Band | <input checked="" type="checkbox"/> GSM 850 <input checked="" type="checkbox"/> PCS 1900 <input checked="" type="checkbox"/> GSM 900 <input checked="" type="checkbox"/> DCS 1800 |
| GPRS Type | Class B |
| GPRS Class | Class 12(1Tx+4Rx, 2Tx+3Rx, 3Tx+2Rx, 4Tx+1Rx) |
| TX Frequency Range | GSM 850 : 820-850MHz;; PCS 1900: 1850-1910MHz; |
| RX Frequency Range | GSM 850 : 869~894MHz; PCS 1900: 1930~1990MHz |
| Release Version | R99 |
| Type of modulation | GMSK for GSM/GPRS |
| Antenna Gain | 1.0dBi |
| Max. Average Power (Max. Peak Power) | GSM850: 31.64dBm(32.69dBm) ;PCS1900: 28.58dBm(29.68dBm) |
| Bluetooth | |
| Bluetooth Version | <input type="checkbox"/> V2.0 <input type="checkbox"/> V2.1 <input type="checkbox"/> V2.1+EDR <input checked="" type="checkbox"/> V3.0 <input type="checkbox"/> V3.0+HS <input type="checkbox"/> V4.0 |
| Operation Frequency | 2402~2480MHz |
| Type of modulation | <input checked="" type="checkbox"/> GFSK <input checked="" type="checkbox"/> π/4-DQPSK <input checked="" type="checkbox"/> 8-DPSK |
| Avg. Burst Power | 1.41dBm |
| Antenna Gain | 0.8dBi |

EUT Description(Continue)

| | |
|---|--|
| WIFI | |
| WIFI Specification | <input type="checkbox"/> 802.11a <input checked="" type="checkbox"/> 802.11b <input checked="" type="checkbox"/> 802.11g <input checked="" type="checkbox"/> 802.11n(20) <input checked="" type="checkbox"/> 802.11n(40) |
| Operation Frequency | 2412~2462MHz |
| Avg. Burst Power | 11b:9.47dBm,11g: 9.12dBm,11n(20): 8.76dBm,11n(40): 6.87dBm |
| Antenna Gain | 0.8dBi |
| Accessories | |
| Battery | Brand name: Budget Model No. : Noit 18 Voltage and Capacitance: 3.7 V & 600mAh |
| Adapter | Brand name: Budget Model No. : Noit 18 Input: AC 100-240V, 50/60Hz, 100mA Output: DC 5V, 500mA |
| Earphone | Brand name: N/A Model No. : N/A |
| Note:CMU200 can measure the average power and Peak power at the same time | |
| Product | Type |
| | <input checked="" type="checkbox"/> Production unit <input type="checkbox"/> Identical Prototype |

3. SAR MEASUREMENT SYSTEM

3.1. The DASY5 system used for performing compliance tests consists of following items




- A standard high precision 6-axis robot with controller, teach pendant and software.
- Data acquisition electronics (DAE) which attached to the robot arm extension. The DAE consist of a highly sensitive electrometer-grade preamplifier with auto-zeroing, a channel and gain-switching multiplexer, a fast 16 bit AD-converter and a command decoder with a control logic unit. Transmission to the measurement server is accomplished through an optical downlink for data and status information, as well as an optical uplink for commands and the clock
- A dosimetric probe equipped with an optical surface detector system.
- The Electro-optical converter (EOC) performs the conversion from optical to electrical signals for the digital Communication to the DAE. To use optical surface detection, a special version of the EOC is required. The EOC signal is transmitted to the measurement server.
- A Light Beam used is for probe alignment. This improves the (absolute) accuracy of the probe positioning.
- A computer running WinXP and the DASY5 software.
- Remote control and teach pendant as well as additional circuitry for robot safety such as warning lamps, etc.
- Phantoms, device holders and other accessories according to the targeted measurement.

3.2. DASY5 E-Field Probe

The SAR measurement is conducted with the dosimetric probe manufactured by SPEAG. The probe is specially designed and calibrated for use in liquid with high permittivity. The dosimetric probe has special calibration in liquid at different frequency. SPEAG conducts the probe calibration in compliance with international and national standards (e.g. IEEE 1528 and relevant KDB files.) The calibration data are in Appendix D.

Isotropic E-Field Probe Specification

| | | |
|---------------|--|---|
| Model | EX3DV4 | |
| Manufacture | SPEAG | |
| frequency | 0.3GHz-6 GHz Linearity:±0.2dB(300 MHz-6 GHz) |  |
| Dynamic Range | 0.01W/Kg-100W/Kg Linearity:±0.2dB | |
| Dimensions | Overall length:337mm Tip diameter:2.5mm Typical distance from probe tip to dipole centers:1mm | |
| Application | High precision dosimetric measurements in any exposure scenario (e.g., very strong gradient fields). Only probe which enables compliance testing for frequencies up to 6 GHz with precision of better 30%. | |

3.3. Data Acquisition Electronics description

The data acquisition electronics (DAE) consist of a highly sensitive electrometer-grade preamplifier with auto-zeroing, a channel and gain-switching multiplexer, a fast 16 bit AD-converter and a command decoder with a control logic unit. Transmission to the measurement server is accomplished through an optical downlink for data and status information, as well as an optical uplink for commands and the clock.

The mechanical probe mounting device includes two different sensor systems for frontal and sideways probe contacts. They are used for mechanical surface detection and probe collision detection.

DAE4

| | |
|------------------------------|--------------------------|
| Input Impedance | 200MOhm |
| The Inputs | Symmetrical and floating |
| Common mode rejection | above 80 dB |

3.4. Robot

The DASY system uses the high precision robots (DASY5:TX60) type from Stäubli SA (France). For the 6-axis controller system, the robot controller version from is used.

The XL robot series have many features that are important for our application:

- ☐ High precision (repeatability 0.02 mm)
- ☐ High reliability (industrial design)
- ☐ Jerk-free straight movements
- ☐ Low ELF interference (the closed metallic construction shields against motor control fields)
- ☐ 6-axis controller



3.5. Light Beam Unit

The light beam switch allows automatic “tooling” of the probe. During the process, the actual position of the probe tip with respect to the robot arm is measured, as well as the probe length and the horizontal probe offset. The software then corrects all movements, such that the robot coordinates are valid for the probe tip.

The repeatability of this process is better than 0.1 mm. If a position has been taught with an aligned prob.1 mm, even if the other probe has different dimensions. During probe rotations, the probe tip will keep its actual position. e, the same position will be reached with another aligned probe within 0



3.6. Device Holder

The DASY device holder is designed to cope with different positions given in the standard. It has two scales for the device rotation (with respect to the body axis) and the device inclination (with respect to the line between the ear reference points). The rotation center for both scales is the ear reference point (EPR).

Thus the device needs no repositioning when changing the angles.

The DASY device holder has been made out of low-loss POM material having the following dielectric parameters: relative permittivity $\epsilon=3$ and loss tangent $\delta = 0.02$. The amount of dielectric material has been reduced in the closest vicinity of the device, since measurements have suggested that the influence of the clamp on the test results could thus be lowered.



3.7. Measurement Server

The measurement server is based on a PC/104 CPU board with CPU (DASY5: 400 MHz, Intel Celeron), chip-disk (DASY5: 128MB), RAM (DASY5: 128MB). The necessary circuits for communication with the DAE electronic box, as well as the 16 bit AD converter system for optical detection and digital I/O interface are contained on the DAYS I/O board, which is directly connected to the PC/104 bus of the CPU board.

The measurement server performs all the real-time data evaluation for field measurements and surface detection, controls robot movements and handles safety operations.



3.8. PHANTOM

SAM Twin Phantom

The SAM twin phantom is a fiberglass shell phantom with 2mm shell thickness (except the ear region where shell thickness increases to 6mm). It has three measurement areas:

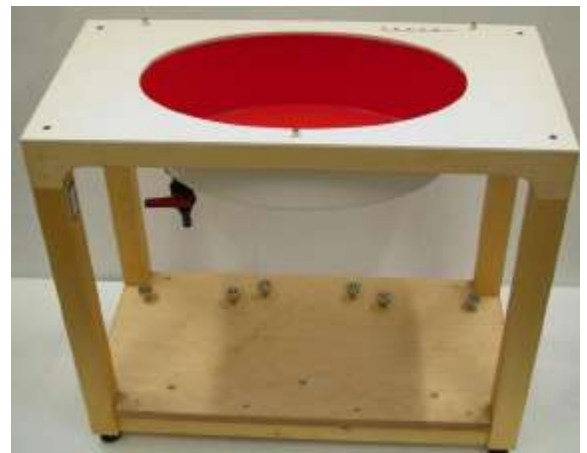
- ☐ Left head
- ☐ Right head
- ☐ Flat phantom



The bottom plate contains three pair of bolts for locking the device holder. The device holder positions are adjusted to the standard measurement positions in the three sections. A white cover is provided to tap the phantom during off-periods to prevent water evaporation and changes in the liquid parameters. On the phantom top, three reference markers are provided to identify the phantom position with respect to the robot.

ELI4 Phantom

- ☐ Flat phantom a fiberglass shell flat phantom with 2mm+/- 0.2 mm shell thickness. It has only one measurement area for Flat phantom



4. SAR MEASUREMENT PROCEDURE

4.1. Specific Absorption Rate (SAR)

SAR is related to the rate at which energy is absorbed per unit mass in object exposed to a radio field. The SAR distribution in a biological body is complicated and is usually carried out by experimental techniques or numerical modeling. The standard recommends limits for two tiers of groups, occupational/controlled and occupational/uncontrolled, based on a person's awareness and ability to exercise control over his or her exposure. In general, occupational/controlled exposure limits are higher than the limits for general population/uncontrolled.

The SAR definition is the time derivative (rate) of the incremental energy (dW) absorbed by (dissipated in) an incremental mass (dm) contained in a volume element (dv) of given mass density (ρ). The equation description is as below:

$$SAR = \frac{d}{dt} \left(\frac{dW}{dm} \right) = \frac{d}{dt} \left(\frac{dW}{\rho dV} \right)$$

SAR is expressed in units of Watts per kilogram (W/Kg)

SAR can be obtained using either of the following equations:

$$SAR = \frac{\sigma E^2}{\rho}$$

$$SAR = c_h \left. \frac{dT}{dt} \right|_{t=0}$$

Where

| | |
|----------|--|
| SAR | is the specific absorption rate in watts per kilogram; |
| E | is the r.m.s. value of the electric field strength in the tissue in volts per meter; |
| σ | is the conductivity of the tissue in siemens per metre; |
| ρ | is the density of the tissue in kilograms per cubic metre; |
| c_h | is the heat capacity of the tissue in joules per kilogram and Kelvin; |

$\left. \frac{dT}{dt} \right|_{t=0}$ is the initial time derivative of temperature in the tissue in kelvins per second

4.2. SAR Measurement Procedure

Step 1: Power Reference Measurement

The Power Reference Measurement and Power Drift Measurement are for monitoring the power drift of the device under test in the batch process. The minimum distance of probe sensors to surface is 2.7mm This distance cannot be smaller than the distance os sensor calibration points to probe tip as `defined in the probe properties,

Step 2: Area Scan

The Area Scan is used as a fast scan in two dimensions to find the area of high field values, before doing a fine measurement around the hot spot. The sophisticated interpolation routines implemented in DASY software can find the maximum locations even in relatively coarse grids. When an Area Scan has measured all reachable points, it computes the field maximal found in the scanned area, within a range of the global maximum. The range (in db) is specified in the standards for compliance testing. For example, a 2db range is required in IEEE Standard 1528 and IEC62209 standards, whereby 3db is a requirement when compliance is assessed in accordance with the ARIB standard (Japan) If one Zoom Scan follows the Area Scan, then only the absolute maximum will be taken as reference. For cases where multiple maximum are detected, the number of Zoom Scan has to be increased accordingly.

Area Scan Parameters extracted from KDB 865664 D01 SAR Measurement 100MHz to 6GHz

| | $\leq 3 \text{ GHz}$ | $> 3 \text{ GHz}$ |
|--|--|--|
| Maximum distance from closest measurement point (geometric center of probe sensors) to phantom surface | $5 \pm 1 \text{ mm}$ | $\frac{1}{2} \cdot \delta \cdot \ln(2) \pm 0.5 \text{ mm}$ |
| Maximum probe angle from probe axis to phantom surface normal at the measurement location | $30^\circ \pm 1^\circ$ | $20^\circ \pm 1^\circ$ |
| Maximum area scan spatial resolution: $\Delta x_{\text{Area}}, \Delta y_{\text{Area}}$ | $\leq 2 \text{ GHz: } \leq 15 \text{ mm}$ $2 - 3 \text{ GHz: } \leq 12 \text{ mm}$ | $3 - 4 \text{ GHz: } \leq 12 \text{ mm}$ $4 - 6 \text{ GHz: } \leq 10 \text{ mm}$ |
| | When the x or y dimension of the test device, in the measurement plane orientation, is smaller than the above, the measurement resolution must be \leq the corresponding x or y dimension of the test device with at least one measurement point on the test device. | |

Step 3: Zoom Scan

Zoom Scan are used to assess the peak spatial SAR value within a cubic average volume containing 1g abd 10g of simulated tissue. The Zoom Scan measures points(refer to table below) within a cube whose base faces are centered on the maxima found in a preceding area scan job within the same procedure. When the measurement is done, the Zoom Scan evaluates the averaged SAR for 1g and 10g and displays these values next to the job's label.

Zoom Scan Parameters extracted from KDB865664 d01 SAR Measurement 100MHz to 6GHz

| | | | | |
|---|---|---|---|---|
| Maximum zoom scan spatial resolution: $\Delta x_{\text{Zoom}}, \Delta y_{\text{Zoom}}$ | | | $\leq 2 \text{ GHz}: \leq 8 \text{ mm}$ $2 - 3 \text{ GHz}: \leq 5 \text{ mm}^*$ | $3 - 4 \text{ GHz}: \leq 5 \text{ mm}^*$ $4 - 6 \text{ GHz}: \leq 4 \text{ mm}^*$ |
| Maximum zoom scan spatial resolution, normal to phantom surface | uniform grid: $\Delta z_{\text{Zoom}}(n)$ | | $\leq 5 \text{ mm}$ | $3 - 4 \text{ GHz}: \leq 4 \text{ mm}$ $4 - 5 \text{ GHz}: \leq 3 \text{ mm}$ $5 - 6 \text{ GHz}: \leq 2 \text{ mm}$ |
| | graded grid | $\Delta z_{\text{Zoom}}(1)$: between 1 st two points closest to phantom surface | $\leq 4 \text{ mm}$ | $3 - 4 \text{ GHz}: \leq 3 \text{ mm}$ $4 - 5 \text{ GHz}: \leq 2.5 \text{ mm}$ $5 - 6 \text{ GHz}: \leq 2 \text{ mm}$ |
| | | $\Delta z_{\text{Zoom}}(n>1)$: between subsequent points | $\leq 1.5 \cdot \Delta z_{\text{Zoom}}(n-1)$ | |
| Minimum zoom scan volume | x, y, z | | $\geq 30 \text{ mm}$ | $3 - 4 \text{ GHz}: \geq 28 \text{ mm}$ $4 - 5 \text{ GHz}: \geq 25 \text{ mm}$ $5 - 6 \text{ GHz}: \geq 22 \text{ mm}$ |
| Note: δ is the penetration depth of a plane-wave at normal incidence to the tissue medium; see draft standard IEEE P1528-2011 for details. | | | | |
| * When zoom scan is required and the <u>reported</u> SAR from the <i>area scan based 1-g SAR estimation</i> procedures of KDB 447498 is $\leq 1.4 \text{ W/kg}$, $\leq 8 \text{ mm}$, $\leq 7 \text{ mm}$ and $\leq 5 \text{ mm}$ zoom scan resolution may be applied, respectively, for 2 GHz to 3 GHz, 3 GHz to 4 GHz and 4 GHz to 6 GHz. | | | | |

Step 4: Power Drift Measurement

The Power Drift Measurement measures the field at the same location as the most recent power reference measurement within the same procedure, and with the same settings. The Power Drift Measurement gives the field difference in dB from the reading conducted within the same settings. This allows a user to monitor the power drift of the device under test within a batch process. The measurement procedure is the same as Step 1.

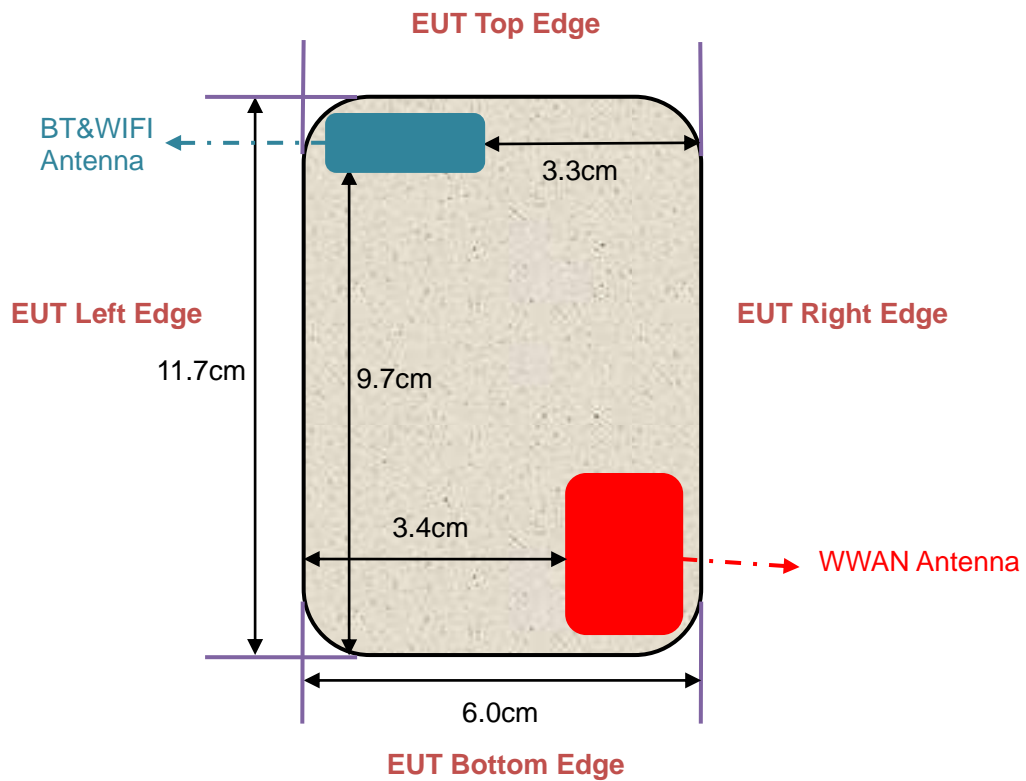
4.3. RF Exposure Conditions

Test Configuration and setting:

The EUT is a model of GSM Portable Mobile Station (MS). It supports GSM/GPRS, BT, WIFI,.

For WWAN SAR testing, the device was controlled by using a base station emulator. Communication between the device and the emulator were established by air link. The distance between the EUT and the antenna is larger than 50cm, and the output power radiated from the emulator antenna is at least 30db smaller than the output power of EUT.

Antenna Location: (the front view)



For WWAN mode:

| Test Configurations | Antenna to edges/surface | SAR required | Note |
|---------------------|--------------------------|--------------|------|
| Head | | | |
| Left Touch | | Yes | |
| Left Tilt | | Yes | |
| Right Touch | | Yes | |
| Right Tilt | | Yes | |
| Body | | | |
| Back | <25mm | Yes | |
| Front | <25mm | Yes | |
| Edge 1 (Top) | 75 | No | |
| Edge 2 (Right) | 2 | Yes | |
| Edge 3 (Bottom) | 2 | Yes | |
| Edge 4 (Left) | 34 | No | |

5. TISSUE SIMULATING LIQUID

For SAR measurement of the field distribution inside the phantom, the phantom must be filled with homogeneous tissue simulating liquid to a depth of at least 15cm. For head SAR testing the liquid height from the ear reference point (ERP) of the phantom to the liquid top surface is larger than 15cm For body SAR testing, the liquid height from the center of the flat phantom to the liquid top surface is larger than 15cm. The nominal dielectric values of the tissue simulating liquids in the phantom and the tolerance of 5% are listed in 4.2

5.1. The composition of the tissue simulating liquid

| Ingredient | Water | Salt | Sugar | HEC | Preventol | DGBE | TWEEN | Triton X-100 |
|--------------|-------|------|-------|-----|-----------|------|-------|--------------|
| 835MHz Head | ✓ | ✓ | ✓ | ✓ | ✓ | -- | -- | -- |
| 835MHz Body | ✓ | ✓ | ✓ | ✓ | ✓ | -- | -- | -- |
| 1900MHz Head | ✓ | ✓ | -- | -- | -- | ✓ | -- | -- |
| 1900MHz Body | ✓ | ✓ | ✓ | ✓ | ✓ | -- | -- | -- |

5.2. Tissue Dielectric Parameters for Head and Body Phantoms

The head tissue dielectric parameters recommended by the IEEE 1528 have been incorporated in the following table. These head parameters are derived from planar layer models simulating the highest expected SAR for the dielectric properties and tissue thickness variations in a human head. Other head and body tissue parameters that have not been specified in IEEE 1528 are derived from the tissue dielectric parameters computed from the 4-Cole-Cole equations described in Reference [12] and extrapolated according to the head parameters specified in IEEE 1528.

| Target Frequency (MHz) | head | | body | |
|------------------------|--------------|----------------|--------------|----------------|
| | ϵ_r | σ (S/m) | ϵ_r | σ (S/m) |
| 300 | 45.3 | 0.87 | 58.2 | 0.92 |
| 450 | 43.5 | 0.87 | 56.7 | 0.94 |
| 835 | 41.5 | 0.90 | 55.2 | 0.97 |
| 900 | 41.5 | 0.97 | 55.0 | 1.05 |
| 915 | 41.5 | 1.01 | 55.0 | 1.06 |
| 1450 | 40.5 | 1.20 | 54.0 | 1.30 |
| 1610 | 40.3 | 1.29 | 53.8 | 1.40 |
| 1800 – 2000 | 40.0 | 1.40 | 53.3 | 1.52 |
| 2450 | 39.2 | 1.80 | 52.7 | 1.95 |
| 3000 | 38.5 | 2.40 | 52.0 | 2.73 |
| 5800 | 35.3 | 5.27 | 48.2 | 6.00 |

(ϵ_r = relative permittivity, σ = conductivity and $\rho = 1000 \text{ kg/m}^3$)

5.3. Tissue Calibration Result

The dielectric parameters of the liquids were verified prior to the SAR evaluation using DASY5 Dielectric Probe Kit and R&S Network Analyzer ZVL6.

| Tissue Stimulant Measurement for 835MHz | | | | | |
|---|--------------|-------------------------------------|-----------------------------------|---------------------------------------|--------------|
| Head | Fr. (MHz) | Dielectric Parameters ($\pm 5\%$) | | Tissue Temp [$^{\circ}\text{C}$] | Test time |
| | | ϵ_r 41.5 (39.425-43.575) | δ [s/m] 0.90(0.855-0.945) | | |
| | 824.2 | 42.21 | 0.87 | 22.4 | July 20,2015 |
| | 835 | 41.98 | 0.89 | | |
| | 836.6 | 41.73 | 0.91 | | |
| | 848.8 | 41.25 | 0.92 | | |
| Body | Fr. (MHz) | Dielectric Parameters ($\pm 5\%$) | | Tissue Temp [$^{\circ}\text{C}$] | Test time |
| | | ϵ_r 55.20(52.44-57-96) | δ [s/m]0.97(0.9215-1.0185) | | |
| | 824.2 | 56.32 | 0.94 | 22.6 | July 20,2015 |
| | 835 | 56.08 | 0.95 | | |
| | 836.6 | 55.79 | 0.98 | | |
| | 848.8 | 55.47 | 0.99 | | |

| Tissue Stimulant Measurement for 1900MHz | | | | | |
|--|--------------|-------------------------------------|---------------------------------|---------------------------------------|--------------|
| Head | Fr. (MHz) | Dielectric Parameters ($\pm 5\%$) | | Tissue Temp [$^{\circ}\text{C}$] | Test time |
| | | ϵ_r 40.00(38.00-42.00) | δ [s/m]1.40(1.33-1.47) | | |
| | 1850.2 | 40.88 | 1.37 | 22.1 | July 22,2015 |
| | 1880 | 40.27 | 1.38 | | |
| | 1900 | 40.00 | 1.40 | | |
| | 1909.8 | 39.54 | 1.43 | | |
| Body | Fr. (MHz) | Dielectric Parameters ($\pm 5\%$) | | Tissue Temp [$^{\circ}\text{C}$] | Test time |
| | | ϵ_r 53.30(50.635-55.965) | δ [s/m]1.52(1.444-1.596) | | |
| | 1850.2 | 54.19 | 1.48 | 22.3 | July 22,2015 |
| | 1880 | 53.69 | 1.51 | | |
| | 1900 | 53.11 | 1.52 | | |
| | 1909.8 | 52.68 | 1.54 | | |

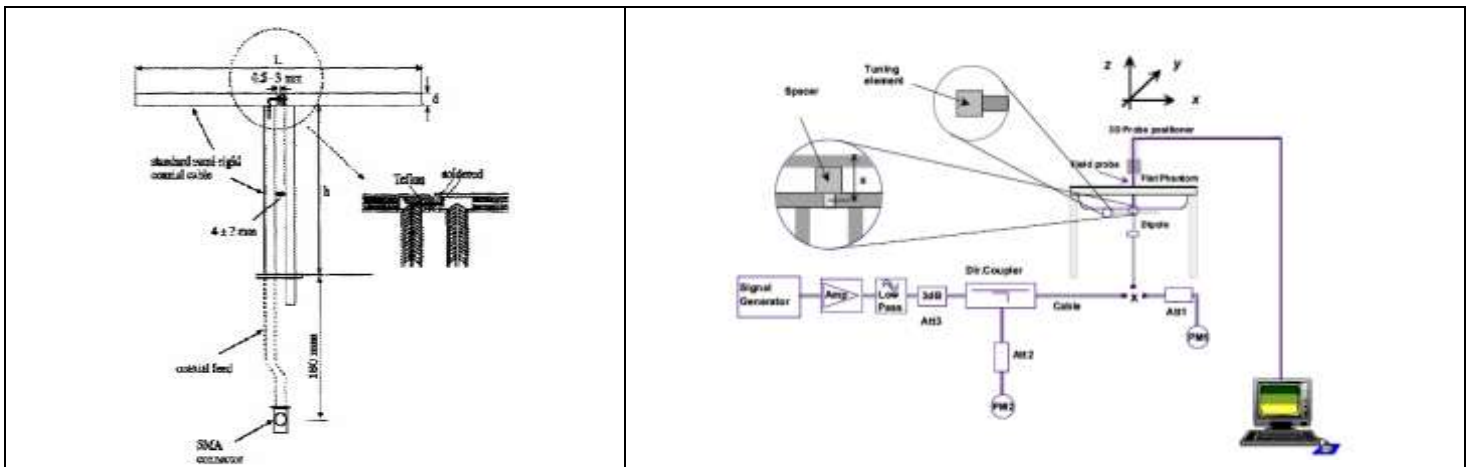
6. SAR SYSTEM CHECK PROCEDURE

6.1. SAR System Check Procedures

SAR system check is required to confirm measurement accuracy, according to the tissue dielectric media, probe calibration points and other system operating parameters required for measuring the SAR of a test device. The system verification must be performed for each frequency band and within the valid range of each probe calibration point required for testing the device. The same SAR probe(s) and tissue-equivalent media combinations used with each specific SAR system for system verification must be used for device testing. When multiple probe calibration points are required to cover substantially large transmission bands, independent system verifications are required for each probe calibration point. A system verification must be performed before each series of SAR measurements using the same probe calibration point and tissue-equivalent medium. Additional system verification should be considered according to the conditions of the tissue-equivalent medium and measured tissue dielectric parameters, typically every three to four days when the liquid parameters are remeasured or sooner when marginal liquid parameters are used at the beginning of a series of measurements.

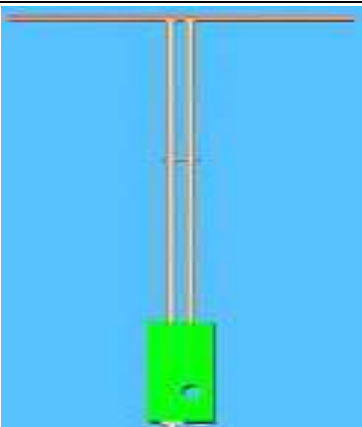
Each DASY system is equipped with one or more system check kits. These units, together with the predefined measurement procedures within the DASY software, enable the user to conduct the system check and system validation. System kit includes a dipole, and dipole device holder.

The system check verifies that the system operates within its specifications. It's performed daily or before every SAR measurement. The system check uses normal SAR measurement in the flat section of the phantom with a matched dipole at a specified distance. The system check setup is shown as below.



6.2. SAR System Check

6.2.1. Dipoles

| | |
|---|---|
|  | <p>The dipoles used is based on the IEEE-1528 standard, and is complied with mechanical and electrical specifications in line with the requirements of both IEEE and FCC Supplement C. the table below provides details for the mechanical and electrical Specifications for the dipoles.</p> |
|---|---|

| Frequency | L (mm) | h (mm) | d (mm) |
|-----------|--------|--------|--------|
| 835MHz | 161.0 | 89.8 | 3.6 |
| 1900MHz | 68 | 39.5 | 3.6 |

6.2.2. System Check Result

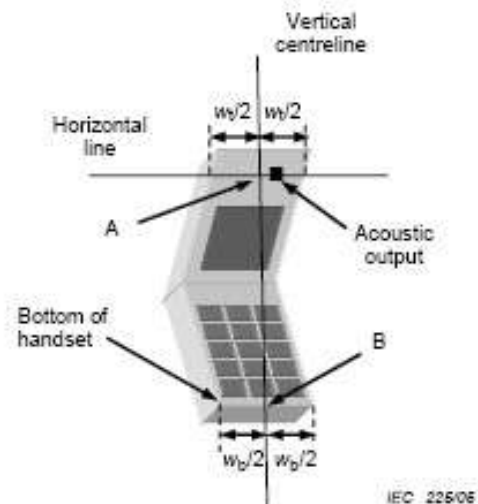
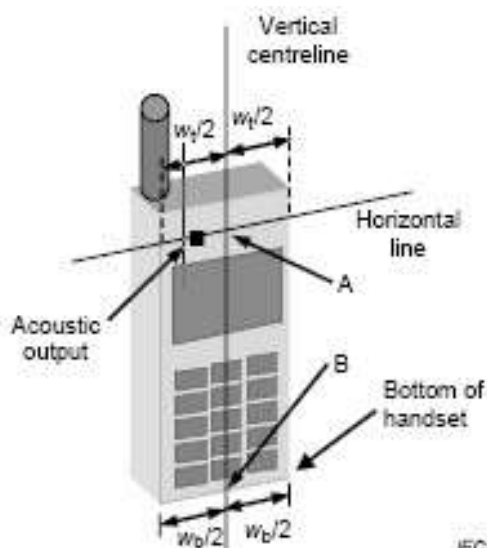
| System Performance Check at 835MHz&1900MHz for Head | | | | | | | | |
|---|--------------------|-------|---------------------------------|---------------|--------------------|-------|-------------------|--------------|
| Validation Kit: SN 46/11DIP 0G835-190 & SN 46/11DIP 1G900-187 | | | | | | | | |
| Frequency [MHz] | Target Value(W/Kg) | | Reference Result ($\pm 10\%$) | | Tested Value(W/Kg) | | Tissue Temp. [°C] | Test time |
| | 1g | 10g | 1g | 10g | 1g | 10g | | |
| 835 | 9.60 | 6.20 | 8.64-10.56 | 5.58-6.82 | 10.56 | 6.24 | 22.4 | July 20,2015 |
| 1900 | 39.65 | 20.24 | 35.685-43.615 | 18.216-22.264 | 40.28 | 20.32 | 22.1 | July 22,2015 |
| System Performance Check at 835 MHz &1900MHz for Body | | | | | | | | |
| Frequency [MHz] | Target Value(W/Kg) | | Reference Result ($\pm 10\%$) | | Tested Value(W/Kg) | | Tissue Temp. [°C] | Test time |
| | 1g | 10g | 1g | 10g | 1g | 10g | | |
| 835 | 9.90 | 6.39 | 8.91-10.89 | 5.75-7.03 | 10.736 | 6.352 | 22.6 | July 20,2015 |
| 1900 | 40.74 | 21.43 | 36.666-44.814 | 19.287-23.573 | 41.44 | 20.8 | 22.3 | July 22,2015 |

7. EUT TEST POSITION

This EUT was tested in **Right Cheek, Right Titled, Left Cheek, Left Titled, Body back, Body front and 4 edges.**

7.1. Define Two Imaginary Lines on the Handset

- (1) The vertical centerline passes through two points on the front side of the handset: the midpoint of the width w_t of the handset at the level of the acoustic output, and the midpoint of the width w_b of the handset.
- (2) The horizontal line is perpendicular to the vertical centerline and passes through the center of the acoustic output. The horizontal line is also tangential to the face of the handset at point A.
- (3) The two lines intersect at point A. Note that for many handsets, point A coincides with the center of the acoustic output; however, the acoustic output may be located elsewhere on the horizontal line. Also note that the vertical centerline is not necessarily to the front face of the handset, especially for clamshell handsets, handsets with flip covers, and other irregularly shaped handsets.



7.2. Cheek Position

- (1) To position the device with the vertical center line of the body of the device and the horizontal line crossing the center piece in a plane parallel to the sagittal plane of the phantom. While maintaining the device in this plane, align the vertical center line with the reference plane containing the ear and mouth reference point (M: Mouth, RE: Right Ear, and LE: Left Ear) and align the center of the ear piece with the line RE-LE.
- (2) To move the device towards the phantom with the ear piece aligned with the the line LE-RE until the phone touched the ear. While maintaining the device in the reference plane and maintaining the phone contact with ear, move the bottom of the phone until any point on the front side is in contact with the cheek of the phantom or until contact with the ear is lost



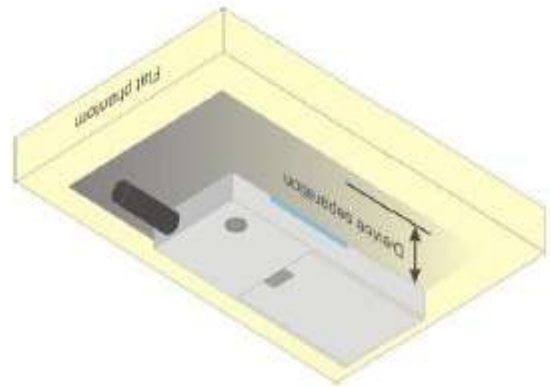
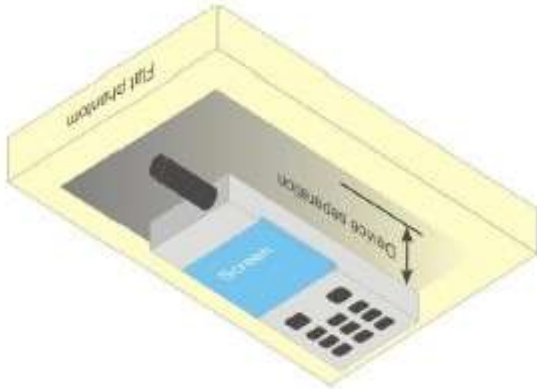
7.3. Title Position

- (1) To position the device in the “cheek” position described above.
- (2) While maintaining the device in the reference plane described above and pivoting against the ear, moves it outward away from the mouth by an angle of 15 degrees or until with the ear is lost.



7.4. Body Worn Position

- (1) To position the EUT parallel to the phantom surface.
- (2) To adjust the EUT parallel to the flat phantom.
- (3) To adjust the distance between the EUT surface and the flat phantom to **10mm**.



8. SAR EXPOSURE LIMITS

SAR assessments have been made in line with the requirements of IEEE-1528, FCC Supplement C, and comply with ANSI/IEEE C95.1-1992 “Uncontrolled Environments” limits. These limits apply to a location which is deemed as “Uncontrolled Environment” which can be described as a situation where the general public may be exposed to an RF source with no prior knowledge or control over their exposure.

Limits for General Population/Uncontrolled Exposure (W/kg)

| Type Exposure | Uncontrolled Environment Limit (W/kg) |
|---|---------------------------------------|
| Spatial Peak SAR (1g cube tissue for brain or body) | 1.60 |
| Spatial Average SAR (Whole body) | 0.08 |
| Spatial Peak SAR (Limbs) | 4.0 |

9. TEST EQUIPMENT LIST

| Equipment description | Manufacturer/ Model | Identification No. | Current calibration date | Next calibration date |
|-------------------------------|----------------------------|--------------------------|-----------------------------|--------------------------|
| Stäubli Robot | Stäubli-TX60 | F13/5Q2UD1/A/01 | N/A | N/A |
| Robot Controller | Stäubli-CS8 | 139522 | N/A | N/A |
| TISSUE Probe | SATIMO | SN 45/11 OCPG45 | 12/03/2014 | 12/02/2015 |
| E-Field Probe | Speag-EX3DV4 | 3953 | 11/06/2014 | 11/05/2015 |
| SAM Twin Phantom | Speag-SAM | 1790 | N/A | N/A |
| Device Holder | Speag-SD 000 H01 KA | SD 000 H01 KA | N/A | N/A |
| DAE4 | Speag-SD 000 D04 BM | 1398 | 03/11/2015 | 03/10/2016 |
| SAR Software | Speag-DASY5 | DASY52.8 | N/A | N/A |
| Liquid | SATIMO | - | N/A | N/A |
| Radio Communication Tester | R&S-CMU200 | 069Y7-158-13-712 | 03/06/2015 | 03/05/2016 |
| Dipole | SATIMO SID835 | SN46/11 DIP 0G835-190 | 10/02/2014 | 10/01/2017 |
| Dipole | SATIMO SID1900 | SN46/11 DIP 1G900-187 | 11/14/2013 | 11/13/2016 |
| Signal Generator | Agilent-E4438C | MY44260051 | 03/06/2015 | 03/05/2016 |
| Power Sensor | NRP-Z23 | US38261498 | 03/06/2015 | 03/05/2016 |
| Spectrum Analyzer E4440 | Agilent | US41421290 | 07/25/2014 | 07/24/2015 |
| Network Analyzer | Rhode & Schwarz ZVL6 | SN100132 | 03/06/2015 | 03/05/2016 |
| Attenuator | Warison /WATT-6SR1211 | N/A | N/A | N/A |
| Attenuator | Mini-circuits / VAT-10+ | N/A | N/A | N/A |
| Amplifier | EM30180 | SN060552 | 03/06/2015 | 03/05/2016 |
| Directional Couple | Werlatone/ C5571-10 | SN99463 | 07/30/2014 | 07/29/2015 |
| Directional Couple | Werlatone/ C6026-10 | SN99482 | 07/30/2014 | 07/29/2015 |
| Power Sensor | NRP-Z21 | 1137.6000.02 | 10/22/2014 | 10/21/2015 |
| Power Viewer | R&S | V2.3.1.0 | N/A | N/A |

Note: Per KDB 865664Dipole SAR Validation, AGC Lab has adopted 3 years calibration intervals. On annual basis, every measurement dipole has been evaluated and is in compliance with the following criteria:

1. There is no physical damage on the dipole;
2. System validation with specific dipole is within 10% of calibrated value;
3. Return-loss is within 20% of calibrated measurement;
4. Impedance is within 5Ω of calibrated measurement.

10. MEASUREMENT UNCERTAINTY

The component of uncertainty may generally be categorized according to the methods used to evaluate them. The evaluation of uncertainty by the statistical analysis of a series of observations is termed a Type A evaluation of uncertainty. The evaluation of uncertainty by means other than the statistical analysis of a series of observation is termed a Type B evaluation of uncertainty. Each component of uncertainty, however evaluated, is represented by an estimated standard deviation, termed standard uncertainty, which is determined by the positive square root of the estimated variance.

A Type A evaluation of standard uncertainty may be based on any valid statistical method for treating data. This includes calculating the standard deviation of the mean of a series of independent observations; using the method of least squares to fit a curve to the data in order to estimate the parameter of the curve and their standard deviations; or carrying out an analysis of variance in order to identify and quantify random effects in certain kinds of measurement.

A type B evaluation of standard uncertainty is typically based on scientific judgment using all of the relevant information available. These may include previous measurement data, experience, and knowledge of the behavior and properties of relevant materials and instruments, manufacture's specification, data provided in calibration reports and uncertainties assigned to reference data taken from handbooks. Broadly speaking, the uncertainty is either obtained from an outdoor source or obtained from an assumed distribution, such as the normal distribution, rectangular or triangular distributions indicated in Table as follow.

| Uncertainty Distributions | Normal | Rectangular | Triangular | U-Shape |
|---------------------------|----------|--------------|--------------|--------------|
| Multi-plying Factor(a) | $1/k(b)$ | $1/\sqrt{3}$ | $1/\sqrt{6}$ | $1/\sqrt{2}$ |

(a) Standard uncertainty is determined as the product of the multiplying factor and the estimated range of variations in the measured quantity

(b) k is the coverage factor

Table 13.1 Standard Uncertainty for Assumed Distribution (above table)

The combined standard uncertainty of the measurement result represents the estimated standard deviation of the result. It is obtained by combining the individual standard uncertainties of both Type A and Type B evaluation using the usual "root-sum-squares" (RSS) methods of combining standard deviations by taking the positive square root of the estimated variances.

Expanded uncertainty is a measure of uncertainty that defines an interval about the measurement result within which the measured value is confidently believed to lie. It is obtained by multiplying the combined standard uncertainty by a coverage factor. Typically, the coverage factor ranges from 2 to 3. Using a coverage factor allows the true value of a measured quantity to be specified with a defined probability within the specified uncertainty range. For purpose of this document, a coverage factor two is used, which corresponds to confidence interval of about 95 %. The DASY uncertainty Budget is shown in the following tables.

| Measurement uncertainty for 30 MHz to 3GHz averaged over 1 gram / 10 gram. | | | | | | | |
|--|-------------------------|--------------------------|---------|---------|----------|---------------------------|----------------------------|
| Error Description | Uncertainty value(±10%) | Probability Distribution | Divisor | (Ci) 1g | (Ci) 10g | Standard Uncertainty (1g) | Standard Uncertainty (10g) |
| Measurement System | | | | | | | |
| Probe Calibration | 6.53 | Normal | 1 | 1 | 1 | 6.53 | 6.53 |
| Axial Isotropy | 4.6 | Rectangular | √3 | 1 | 1 | 2.66 | 2.66 |
| Hemispherical Isotropy | 9.3 | Rectangular | √3 | 1 | 1 | 5.37 | 5.37 |
| Linearity | 4.5 | Rectangular | √3 | 1 | 1 | 2.60 | 2.60 |
| Probe Modulation Response | 0.2 | Rectangular | √3 | 1 | 1 | 0.12 | 0.12 |
| System Detection Limits | 0.9 | Rectangular | √3 | 1 | 1 | 0.52 | 0.52 |
| Boundary Effects | 0.9 | Rectangular | √3 | 0 | 0 | 0 | 0 |
| Readout Electronics | 0.2 | Normal | √3 | 1 | 1 | 0.12 | 0.12 |
| Response Time | 0 | Rectangular | √3 | 1 | 1 | 0 | 0 |
| Integration Time | 0 | Rectangular | √3 | 1 | 1 | 0 | 0 |
| RF Ambient Noise | 0.9 | Rectangular | √3 | 1 | 1 | 0.52 | 0.52 |
| RF Ambient Reflection | 0.9 | Rectangular | √3 | 1 | 1 | 0.52 | 0.52 |
| Probe Positioner | 0.7 | Rectangular | √3 | 1 | 1 | 0.40 | 0.40 |
| Probe Positioning | 6.5 | Rectangular | √3 | 1 | 1 | 3.75 | 3.75 |
| Post-processing | 3.8 | Rectangular | √3 | 1 | 1 | 2.19 | 2.19 |
| Test Sample Related | | | | | | | |
| Device Positioning | 3.6 | Normal | 1 | 1 | 1 | 3.6 | 3.6 |
| Device Holder | 2.9 | Normal | 1 | 1 | 1 | 2.9 | 2.9 |
| Measurement SAR Drift | 5.0 | Rectangular | √3 | 1 | 1 | 2.89 | 2.89 |
| Power Scaling | 0.0 | Rectangular | √3 | 1 | 1 | 0 | 0 |
| Phantom and Setup | | | | | | | |
| Phantom Uncertainty | 3.9 | Rectangular | √3 | 1 | 1 | 2.25 | 2.25 |
| Liquid Conductivity(Meas.) | 2.4 | Normal | 1 | 0.78 | 0.71 | 1.87 | 1.70 |
| Liquid Conductivity(Target) | 4.9 | Rectangular | √3 | 0.64 | 0.43 | 1.81 | 1.22 |
| Liquid Permittivity(Meas.) | 2.4 | Normal | 1 | 0.26 | 0.26 | 0.62 | 0.62 |
| Liquid Permittivity((Target) | 4.9 | Rectangular | √3 | 0.6 | 0.49 | 1.70 | 1.39 |
| Liquid Conductivity-temperature uncertainty | 1.6 | Rectangular | √3 | 0.78 | 0.71 | 0.72 | 0.66 |
| Liquid Permittivity-temperature uncertainty | 0.2 | Rectangular | √3 | 0.23 | 0.26 | 0.026 | 0.03 |
| Combined Standard Uncertainty | | | | | | 12.03 | 12.00 |
| Coverage Factor for 95% | | | | | | K=2 | |
| Expanded Uncertainty | | | | | | ±24.06% | ±24.00% |

| DAYS5 System Check Uncertainty for 30 MHz to 6GHz averaged range | | | | | | | | |
|--|------------------------|-------------|------------|------------|-------------|-------------------|--------------------|---------------------------------------|
| Error Description | Uncer. value (±10%) | Prob. Dist. | Div. | (Ci) 1g | (Ci) 10g | Std. Unc. (1g) | Std. Unc. (10g) | (v _i) V _{eff} |
| Measurement System | | | | | | | | |
| Probe Calibration | 6.53 | Normal | 1 | 1 | 1 | 6.53 | 6.53 | ∞ |
| Axial Isotropy | 4.6 | Rectangular | $\sqrt{3}$ | 1 | 1 | 2.66 | 2.66 | ∞ |
| Hemispherical Isotropy | 9.3 | Rectangular | $\sqrt{3}$ | 1 | 1 | 5.37 | 5.37 | ∞ |
| Boundary Effects | 0.9 | Rectangular | $\sqrt{3}$ | 0 | 0 | 0 | 0 | ∞ |
| Linearity | 4.5 | Rectangular | $\sqrt{3}$ | 1 | 1 | 2.60 | 2.60 | ∞ |
| System Detection Limits | 0.9 | Rectangular | $\sqrt{3}$ | 1 | 1 | 0.52 | 0.52 | ∞ |
| Modulation Response | 0 | Rectangular | $\sqrt{3}$ | 1 | 1 | 0 | 0 | ∞ |
| Readout Electronics | 0.2 | Normal | 1 | 1 | 1 | 0.2 | 0.2 | ∞ |
| Response Time | 0 | Rectangular | $\sqrt{3}$ | 1 | 1 | 0 | 0 | ∞ |
| Integration Time | 0 | Rectangular | $\sqrt{3}$ | 1 | 1 | 0 | 0 | ∞ |
| RF Ambient Noise | 0.9 | Rectangular | $\sqrt{3}$ | 1 | 1 | 0.52 | 0.52 | ∞ |
| RF Ambient Reflection | 0.9 | Rectangular | $\sqrt{3}$ | 1 | 1 | 0.52 | 0.52 | ∞ |
| Probe Positioner | 0.7 | Rectangular | $\sqrt{3}$ | 1 | 1 | 0.402 | 0.402 | ∞ |
| Probe Positioning | 6.5 | Rectangular | $\sqrt{3}$ | 1 | 1 | 3.752 | 3.752 | ∞ |
| Max. SAR Eval. | 1.9 | Rectangular | $\sqrt{3}$ | 1 | 1 | 1.10 | 1.10 | ∞ |
| Dipole Related | | | | | | | | |
| Deviation of exp. dipole | 5.3 | Rectangular | $\sqrt{3}$ | 1 | 1 | 3.06 | 3.06 | ∞ |
| Dipole Axis to Liquid Dist. | 2.0 | Rectangular | $\sqrt{3}$ | 1 | 1 | 1.15 | 1.15 | ∞ |
| Input power & SAR drift | 3.3 | Rectangular | $\sqrt{3}$ | 1 | 1 | 1.91 | 1.91 | ∞ |
| Phantom and Setup | | | | | | | | |
| Phantom Uncertainty | 3.9 | Rectangular | $\sqrt{3}$ | 1 | 1 | 2.25 | 2.25 | ∞ |
| SAR correction | 1.8 | Rectangular | $\sqrt{3}$ | 1 | 0.84 | 1.04 | 0.87 | ∞ |
| Liquid Conductivity(Meas.) | 2.4 | Normal | 1 | 0.78 | 0.71 | 1.87 | 1.70 | ∞ |
| Liquid Permittivity(Meas.) | 2.4 | Normal | 1 | 0.26 | 0.26 | 0.62 | 0.62 | ∞ |
| Temp. unc. - Conductivity | 1.6 | Rectangular | $\sqrt{3}$ | 0.78 | 0.71 | 0.72 | 0.66 | ∞ |
| Temp. unc. - Permittivity | 0.2 | Rectangular | $\sqrt{3}$ | 0.23 | 0.26 | 0.02 | 0.03 | ∞ |
| Combined Std. Uncertainty | | | | | | 11.16 | 11.10 | |
| Expanded STD Uncertainty | | | | | | ±22.32% | ±22.20% | |

11. CONDUCTED POWER MEASUREMENT

GSM BAND

| Mode | Frequency(MHz) | Avg. Burst Power(dBm) | Duty cycle Factor(dBm) | Frame Power(dBm) |
|----------------------|----------------|-----------------------|------------------------|------------------|
| Maximum Power <1> | | | | |
| GSM 850 | 824.2 | 31.64 | -9 | 22.64 |
| | 836.6 | 31.23 | -9 | 22.23 |
| | 848.8 | 31.18 | -9 | 22.18 |
| GPRS 850 (1 Slot) | 824.2 | 30.86 | -9 | 21.86 |
| | 836.6 | 30.84 | -9 | 21.84 |
| | 848.8 | 30.77 | -9 | 21.77 |
| GPRS 850 (2 Slot) | 824.2 | 28.38 | -6 | 22.38 |
| | 836.6 | 28.33 | -6 | 22.33 |
| | 848.8 | 28.29 | -6 | 22.29 |
| GPRS 850 (3 Slot) | 824.2 | 26.32 | -4.26 | 22.06 |
| | 836.6 | 26.26 | -4.26 | 22 |
| | 848.8 | 26.24 | -4.26 | 21.98 |
| GPRS 850 (4 Slot) | 824.2 | 25.35 | -3 | 22.35 |
| | 836.6 | 25.29 | -3 | 22.29 |
| | 848.8 | 25.32 | -3 | 22.32 |
| Maximum Power <2> | | | | |
| GSM 850 | 824.2 | 31.18 | -9 | 22.18 |
| | 836.6 | 31.26 | -9 | 22.26 |
| | 848.8 | 31.20 | -9 | 22.20 |
| GPRS 850 (1 Slot) | 824.2 | 30.85 | -9 | 21.85 |
| | 836.6 | 30.82 | -9 | 21.82 |
| | 848.8 | 30.74 | -9 | 21.74 |
| GPRS 850 (2 Slot) | 824.2 | 28.35 | -6 | 22.35 |
| | 836.6 | 28.31 | -6 | 22.31 |
| | 848.8 | 28.28 | -6 | 22.28 |
| GPRS 850 (3 Slot) | 824.2 | 26.31 | -4.26 | 22.05 |
| | 836.6 | 26.22 | -4.26 | 21.96 |
| | 848.8 | 26.21 | -4.26 | 21.95 |
| GPRS 850 (4 Slot) | 824.2 | 25.31 | -3 | 22.31 |
| | 836.6 | 25.28 | -3 | 22.28 |
| | 848.8 | 25.26 | -3 | 22.26 |

GSM BAND CONTINUE

| Mode | Frequency(MHz) | Avg. Burst Power(dBm) | Duty cycle Factor(dBm) | Frame Power(dBm) |
|----------------------|----------------|-----------------------|------------------------|------------------|
| PCS1900 | 1850.2 | 28.58 | -9 | 19.58 |
| | 1880 | 28.22 | -9 | 19.22 |
| | 1909.8 | 28.21 | -9 | 19.21 |
| GPRS1900 (1 Slot) | 1850.2 | 27.79 | -9 | 18.79 |
| | 1880 | 27.76 | -9 | 18.76 |
| | 1909.8 | 27.74 | -9 | 18.74 |
| GPRS1900 (2 Slot) | 1850.2 | 25.38 | -6 | 19.38 |
| | 1880 | 25.36 | -6 | 19.36 |
| | 1909.8 | 25.31 | -6 | 19.31 |
| GPRS1900 (3 Slot) | 1850.2 | 23.45 | -4.26 | 19.19 |
| | 1880 | 23.38 | -4.26 | 19.12 |
| | 1909.8 | 23.34 | -4.26 | 19.08 |
| GPRS1900 (4 Slot) | 1850.2 | 22.37 | -3 | 19.37 |
| | 1880 | 22.24 | -3 | 19.24 |
| | 1909.8 | 22.22 | -3 | 19.22 |
| Maximum Power <2> | | | | |
| PCS1900 | 1850.2 | 28.21 | -9 | 19.21 |
| | 1880 | 28.29 | -9 | 19.29 |
| | 1909.8 | 28.25 | -9 | 19.25 |
| GPRS1900 (1 Slot) | 1850.2 | 27.77 | -9 | 18.77 |
| | 1880 | 27.71 | -9 | 18.71 |
| | 1909.8 | 27.73 | -9 | 18.73 |
| GPRS1900 (2 Slot) | 1850.2 | 25.35 | -6 | 19.35 |
| | 1880 | 25.33 | -6 | 19.33 |
| | 1909.8 | 25.31 | -6 | 19.31 |
| GPRS1900 (3 Slot) | 1850.2 | 23.35 | -4.26 | 19.09 |
| | 1880 | 23.34 | -4.26 | 19.08 |
| | 1909.8 | 23.31 | -4.26 | 19.05 |
| GPRS1900 (4 Slot) | 1850.2 | 22.35 | -3 | 19.35 |
| | 1880 | 22.21 | -3 | 19.21 |
| | 1909.8 | 22.19 | -3 | 19.19 |

Note 1:

The Frame Power (Source-based time-averaged Power) is scaled the maximum burst average power based on time slots. The calculated methods are show as following:

Frame Power = Max burst power (1 Up Slot) – 9 dB

Frame Power = Max burst power (2 Up Slot) – 6 dB

Frame Power = Max burst power (3 Up Slot) – 4.26 dB

Frame Power = Max burst power (4 Up Slot) – 3 dB

WIFI

| Mode | Data Rate (Mbps) | Channel | Frequency(MHz) | Avg. Burst Power(dBm) |
|-------------|------------------|---------|----------------|-----------------------|
| 802.11b | 1 | 01 | 2412 | 9.47 |
| | | 06 | 2437 | 9.45 |
| | | 11 | 2462 | 9.43 |
| 802.11g | 6 | 01 | 2412 | 9.12 |
| | | 06 | 2437 | 9.08 |
| | | 11 | 2462 | 9.03 |
| 802.11n(20) | 6.5 | 01 | 2412 | 8.76 |
| | | 06 | 2437 | 8.59 |
| | | 11 | 2462 | 8.52 |
| 802.11n(40) | 13.5 | 03 | 2422 | 6.87 |
| | | 06 | 2437 | 6.53 |
| | | 09 | 2452 | 6.47 |

Bluetooth_V3.0

| Modulation | Channel | Frequency(MHz) | Average Power (dBm) |
|----------------|---------|----------------|---------------------|
| GFSK | 0 | 2402 | 0.92 |
| | 39 | 2441 | 1.34 |
| | 78 | 2480 | 1.41 |
| π /4-DQPSK | 0 | 2402 | 0.27 |
| | 39 | 2441 | 0.6 |
| | 78 | 2480 | 0.45 |
| 8-DPSK | 0 | 2402 | 0.32 |
| | 39 | 2441 | 0.62 |
| | 78 | 2480 | 0.65 |

12. TEST RESULTS

12.1. SAR Test Results Summary

12.1.1. Test position and configuration

Head SAR was performed with the device configured in the positions according to IEEE 1528-2003, and Body SAR was performed with the device 10mm from the phantom.

12.1.2. Operation Mode

1. Per KDB 447498 D01 v05r02 ,for each exposure position, if the highest 1-g SAR is ≤ 0.8 W/kg, testing for low and high channel is optional.
2. Per KDB 865664 D01 v01r03,for each frequency band, if the measured SAR is ≥ 0.8 W/Kg, testing for repeated SAR measurement is required , that the highest measured SAR is only to be tested. When the SAR results are near the limit, the following procedures are required for each device to verify these types of SAR measurement related variation concerns by repeating the highest measured SAR configuration in each frequency band.
 - (1) When the original highest measured SAR is ≥ 0.8 W/Kg, repeat that measurement once.
 - (2) Perform a second repeated measurement only if the ratio of largest to smallest SAR for the original and first repeated measurements is > 1.20 or when the original or repeated measurement is ≥ 1.45 W/Kg.
 - (3) Perform a third repeated measurement only if the original, first and second repeated measurement is ≥ 1.5 W/Kg and ratio of largest to smallest SAR for the original, first and second measurement is ≥ 1.20 .
3. Body-worn exposure conditions are intended to voice call operations, therefore GSM voice call mode is selected to be test.
4. Per KDB 648474 D04 v01r02,when the reported SAR for a body-worn accessory measured without a headset connected to the handset is ≤ 1.2 W/Kg, SAR testing with a headset connected is not required.
5. Per 248227 D01 v01r02, SAR is not required for 802.11g channels when the maximum average output power is less than 1/4dB higher than measured on the corresponding 802.11b channels.
6. Maximum Scaling SAR in order to calculate the Maximum SAR values to test under the standard Peak Power, Calculation method is as follows:
Maximum Scaling SAR =tested SAR (Max.) \times [maximum turn-up power (mw)/ maximum measurement output power(mw)]

12.1.3. Test Result

| SAR MEASUREMENT | | | | | | | | | |
|--|-------------|-----|-----------|---------------------|--------------------------|--------------------------|--------------------------|-------------------|------------|
| Depth of Liquid (cm):>15 | | | | | Relative Humidity (%):53 | | | | |
| Product: 2G GSM Mobile Phone | | | | | | | | | |
| Test Mode: GSM850 with GMSK modulation | | | | | | | | | |
| Position | Mode | Ch. | Fr. (MHz) | Power Drift (<±0.2) | SAR (1g) (W/kg) | Max. Turn-up Power (dBm) | Meas. output Power (dBm) | Scaled SAR (W/Kg) | Limit W/kg |
| SIM 1 Card | | | | | | | | | |
| Left Cheek | voice | 190 | 836.6 | 0.09 | 0.0671 | 32 | 31.23 | 0.080 | 1.6 |
| Left Tilt | voice | 190 | 836.6 | 0.18 | 0.0662 | 32 | 31.23 | 0.079 | 1.6 |
| Right Cheek | voice | 190 | 836.6 | -0.03 | 0.106 | 32 | 31.23 | 0.127 | 1.6 |
| Right Tilt | voice | 190 | 836.6 | -0.16 | 0.0798 | 32 | 31.23 | 0.095 | 1.6 |
| Body back | voice | 190 | 836.6 | -0.14 | 0.302 | 32 | 31.23 | 0.361 | 1.6 |
| Body front | voice | 190 | 836.6 | 0.20 | 0.0564 | 32 | 31.23 | 0.067 | 1.6 |
| | | | | | | | | | |
| Left Cheek | GPRS-2 slot | 190 | 836.6 | -0.14 | 0.185 | 29 | 28.33 | 0.216 | 1.6 |
| Left Tilt | GPRS-2 slot | 190 | 836.6 | 0.15 | 0.154 | 29 | 28.33 | 0.180 | 1.6 |
| Right Cheek | GPRS-2 slot | 190 | 836.6 | -0.20 | 0.261 | 29 | 28.33 | 0.305 | 1.6 |
| Right Tilt | GPRS-2 slot | 190 | 836.6 | -0.16 | 0.191 | 29 | 28.33 | 0.223 | 1.6 |
| Body back | GPRS-2 slot | 128 | 824.2 | -0.08 | 0.737 | 29 | 28.38 | 0.850 | 1.6 |
| Body back | GPRS-2 slot | 190 | 836.6 | -0.20 | 1.00 | 29 | 28.33 | 1.167 | 1.6 |
| Body back | GPRS-2 slot | 251 | 848.8 | -0.06 | 0.769 | 29 | 28.29 | 0.906 | 1.6 |
| Body front | GPRS-2 slot | 190 | 836.6 | -0.11 | 0.181 | 29 | 28.33 | 0.211 | 1.6 |
| Edge 1 (Top) | GPRS-2 slot | 190 | 836.6 | -0.05 | 0.0168 | 29 | 28.33 | 0.020 | 1.6 |
| Edge 2(Right) | GPRS-2 slot | 190 | 836.6 | -0.10 | 0.509 | 29 | 28.33 | 0.594 | 1.6 |
| Edge 3(Bottom) | GPRS-2 slot | 190 | 836.6 | -0.10 | 0.0895 | 29 | 28.33 | 0.104 | 1.6 |
| Edge 4(Left) | GPRS-2 slot | 190 | 836.6 | 0.03 | 0.199 | 29 | 28.33 | 0.232 | 1.6 |
| SIM 2 Card | | | | | | | | | |
| Right Cheek | GPRS-2 slot | 190 | 836.6 | 0.04 | 0.203 | 29 | 28.31 | 0.238 | 1.6 |
| Body back | GPRS-2 slot | 190 | 836.6 | -0.19 | 0.845 | 29 | 28.31 | 0.991 | 1.6 |

Note:

- When the 1-g Reported SAR is ≤ 0.8 W/kg, testing for low and high channel is optional. Refer to KDB 447498.
- The test separation for body is 10mm of all above table.

| SAR MEASUREMENT | | | | | | | | | |
|---|-------------|-----|-----------|---------------------|---------------------------|--------------------------|--------------------------|-------------------|------------|
| Depth of Liquid (cm):>15 | | | | | Relative Humidity (%): 53 | | | | |
| Product: 2G GSM Mobile Phone | | | | | | | | | |
| Test Mode: PCS1900 with GMSK modulation | | | | | | | | | |
| Position | Mode | Ch. | Fr. (MHz) | Power Drift (<±0.2) | SAR (1g) (W/kg) | Max. Turn-up Power (dBm) | Meas. output Power (dBm) | Scaled SAR (W/Kg) | Limit W/kg |
| SIM 1 Card | | | | | | | | | |
| Left Cheek | voice | 661 | 1880.0 | 0.12 | 0.0841 | 29 | 28.22 | 0.101 | 1.6 |
| Left Tilt | voice | 661 | 1880.0 | 0.04 | 0.0772 | 29 | 28.22 | 0.092 | 1.6 |
| Right Cheek | voice | 661 | 1880.0 | 0.13 | 0.107 | 29 | 28.22 | 0.128 | 1.6 |
| Right Tilt | voice | 661 | 1880.0 | 0.09 | 0.101 | 29 | 28.22 | 0.121 | 1.6 |
| Body back | voice | 661 | 1880.0 | -0.15 | 0.433 | 29 | 28.22 | 0.518 | 1.6 |
| Body front | voice | 661 | 1880.0 | 0.05 | 0.164 | 29 | 28.22 | 0.196 | 1.6 |
| | | | | | | | | | |
| Left Cheek | GPRS-2 slot | 661 | 1880.0 | -0.15 | 0.208 | 26 | 25.36 | 0.241 | 1.6 |
| Left Tilt | GPRS-2 slot | 661 | 1880.0 | -0.14 | 0.277 | 26 | 25.36 | 0.321 | 1.6 |
| Right Cheek | GPRS-2 slot | 661 | 1880.0 | 0.19 | 0.535 | 26 | 25.36 | 0.620 | 1.6 |
| Right Tilt | GPRS-2 slot | 661 | 1880.0 | -0.14 | 0.348 | 26 | 25.36 | 0.403 | 1.6 |
| Body back | GPRS-2 slot | 512 | 1850.2 | -0.02 | 1.06 | 26 | 25.38 | 1.223 | 1.6 |
| Body back | GPRS-2 slot | 661 | 1880.0 | -0.18 | 1.13 | 26 | 25.36 | 1.309 | 1.6 |
| Body back | GPRS-2 slot | 810 | 1909.8 | 0.05 | 1.05 | 26 | 25.31 | 1.231 | 1.6 |
| Body front | GPRS-2 slot | 661 | 1880.0 | -0.12 | 0.601 | 26 | 25.36 | 0.696 | 1.6 |
| Edge 1 (Top) | GPRS-2 slot | 661 | 1880.0 | -0.16 | 0.254 | 26 | 25.36 | 0.294 | 1.6 |
| Edge 2(Right) | GPRS-2 slot | 661 | 1880.0 | -0.05 | 0.345 | 26 | 25.36 | 0.400 | 1.6 |
| Edge 3(Bottom) | GPRS-2 slot | 661 | 1880.0 | -0.10 | 0.506 | 26 | 25.36 | 0.586 | 1.6 |
| Edge 4(Left) | GPRS-2 slot | 661 | 1880.0 | -0.06 | 0.118 | 26 | 25.36 | 0.137 | 1.6 |
| SIM 2 Card | | | | | | | | | |
| Right Cheek | GPRS-2 slot | 661 | 1880.0 | -0.04 | 0.457 | 26 | 25.33 | 0.533 | 1.6 |
| Body back | GPRS-2 slot | 661 | 1880.0 | -0.12 | 1.09 | 26 | 25.33 | 1.272 | 1.6 |

Note:

- When the 1-g Reported SAR is ≤ 0.8 W/kg, testing for low and high channel is optional. Refer to KDB 447498.
- The test separation for body is 10mm of all above table.

| Repeated SAR | | | | | | | | | | |
|---|-------------|-----|-----------|---------------------|----------------------|---------------------|-----------------------|---------------------|-----------------------|------------|
| Product: 2G GSM Mobile Phone | | | | | | | | | | |
| Test Mode: GSM850 & PCS 1900 with GMSK modulation | | | | | | | | | | |
| Position | Mode | Ch. | Fr. (MHz) | Power Drift (<±0.2) | Once SAR (1g) (W/kg) | Power Drift (<±0.2) | Twice SAR (1g) (W/kg) | Power Drift (<±0.2) | Third SAR (1g) (W/kg) | Limit W/kg |
| Body back | GPRS-2 slot | 190 | 836.6 | -0.14 | 0.787 | - | - | - | - | 1.6 |
| Body back | GPRS-2 slot | 661 | 1880.0 | -0.10 | 1.07 | - | - | - | - | 1.6 |

Simultaneous Multi-band Transmission Evaluation: Application Simultaneous Transmission information:

| NO | Simultaneous state | Portable Handset | | |
|----|-------------------------------|------------------|-----------|---------|
| | | Head | Body-worn | Hotspot |
| 1 | GSM(voice)+WLAN 2.4GHz (data) | Yes | Yes | - |
| 2 | GSM(voice)+Bluetooth(data) | - | Yes | - |
| 3 | GSM (Data)+Bluetooth(data) | - | Yes | - |

NOTE:

1. WLAN and BT share the same antenna, and cannot transmit simultaneously.
2. Simultaneous with every transmitter must be the same test position.
3. KDB 447498 D01, BT SAR is excluded as below table.
4. KDB 447498 D01, for handsets the test separation distance is determined by the smallest distance between the outer surface of the device and the user; which is 0mm for head SAR and 10mm for body-worn SAR.
5. If the test separation distance is <5mm, 5mm is used for excluded SAR calculation.
6. According to KDB447498 D01 4.3.2, simultaneous transmission SAR test exclusion is as follow:
 - (1) Simultaneous transmission SAR test exclusion is determined for each operating configuration and exposure condition according to the reported standalone SAR of each applicable simultaneous transmitting antenna.
 - (2) Any transmitters and antennas should be considered when calculating simultaneous mode.
 - (3) For mobile phone and PC, it's the sum of all transmitters and antennas at the same mode with same position in each applicable exposure condition
 - (4) According to KDB 447498 D01 4.3.1 standalone SAR test exclusion considerations:
When the 1-g and 10-g SAR test exclusion thresholds for 100 MHz to 6 GHz at test separation distances ≤ 50 mm are determined by:

$$[(\text{max. power of channel, including tune-up tolerance, mW})/(\text{min. test separation distance, mm})] \cdot [\sqrt{f(\text{GHz})}] \leq 3.0 \text{ for 1-g SAR and } \leq 7.5 \text{ for 10-g extremity SAR}$$
 - (5) When the standalone SAR test exclusion of section 4.3.1 is applied to an antenna that transmits simultaneously with other antennas, the standalone SAR must be estimated according to the following to determine simultaneous transmission SAR test exclusion:

$$[(\text{max. power of channel, including tune-up tolerance, mW})/(\text{min. test separation distance, mm})] \cdot [\sqrt{f(\text{GHz})}/x] \text{ W/kg for test separation distances } \leq 50 \text{ mm};$$
 where $x = 7.5$ for 1-g SAR, and $x = 18.75$ for 10-g SAR.
7. When the sum of SAR is larger than the limit, SAR test exclusion is determined by the SAR to peak location separation ratio. The simultaneous transmitting antennas in each operating mode and exposure condition combination must be considered one pair at a time to determine the SAR to peak location separation ratio to qualify for test exclusion. The ratio is determined by $(\text{SAR}_1 + \text{SAR}_2)1.5/R_i$, rounded to two decimal digits, and must be ≤ 0.04 for all antenna pairs in the configuration to qualify for 1-g SAR test exclusion.

For WIFI calculation:

Max. power of channel, including tune-up tolerance = 8.913 mW

Separation distance < 5 mm

Frequency, f = 2.412 GHz

By inserting the above values into the formula, (max. power of channel, including tune-up tolerance, mW)/(min. test separation distance, mm).[$\sqrt{f(\text{GHz})}$] [(8.913 / 5)*SQRT(2.412)]=2.77<3.0, WIFI is not require test.

| Estimated SAR | | Max Power including Tune-up Tolerance | | Separation Distance (mm) | Estimated SAR (W/kg) |
|---------------|------|---------------------------------------|-------|--------------------------|----------------------|
| | | dBm | mW | | |
| BT | Head | 2 | 1.585 | 0 | 0.067 |
| | Body | | | 10 | 0.033 |
| WIFI | Head | 9.5 | 8.913 | 0 | 0.369 |
| | Body | | | 10 | 0.185 |

Maximum test results (WWAN) with BT&WIFI SAR:

BT: Head (0 cm gap): 0.067 W/kg and Body (1.0cm gap): 0.033 W/kg

WIFI: Head (0 cm gap): 0.369 W/kg and Body (1.0cm gap): 0.185 W/kg

Sum of the SAR for GSM 850 &Wi-Fi & BT:

| RF Exposure Conditions | Test Position | Simultaneous Transmission Scenario | | | Σ 1-g SAR (W/Kg) | SPLSR (Yes/No) |
|------------------------|---------------|------------------------------------|----------------|-----------|-------------------------|----------------|
| | | GSM 850 Band | Wi-Fi DTS Band | Bluetooth | | |
| Head (voice) | Left Touch | 0.080 | 0.369 | | 0.449 | No |
| | Left Tilt | 0.079 | 0.369 | | 0.448 | No |
| | Right Touch | 0.127 | 0.369 | | 0.496 | No |
| | Right Tilt | 0.095 | 0.369 | | 0.464 | No |
| Body-worn (voice) | Rear | 0.361 | 0.185 | | 0.546 | No |
| | Front | 0.067 | 0.185 | | 0.252 | No |
| | Rear | 0.361 | | 0.033 | 0.394 | No |
| | Front | 0.067 | | 0.033 | 0.100 | No |
| Body-worn (Data) | Rear | 1.167 | | 0.033 | 1.200 | No |
| | Front | 0.211 | | 0.033 | 0.244 | No |
| | Edge 1 | 0.020 | | 0.033 | 0.053 | No |
| | Edge 2 | 0.594 | | 0.033 | 0.627 | No |
| | Edge 3 | 0.104 | | 0.033 | 0.137 | No |
| | Edge 4 | 0.232 | | 0.033 | 0.265 | No |

Note:

- According to KDB 447498 D01 General RF Exposure Guidance, when the simultaneous transmission SAR is less than 1.6 W/Kg, SPLSR assessment is not required.
- SPLSR mean is "The SAR to Peak Location Separation Ratio "

Sum of the SAR for GSM 1900 & Wi-Fi & BT:

| RF Exposure Conditions | Test Position | Simultaneous Transmission Scenario | | | Σ 1-g SAR (W/Kg) | SPLSR (Yes/No) |
|------------------------|---------------|------------------------------------|----------------|-----------|-------------------------|----------------|
| | | GSM1900 Band | Wi-Fi DTS Band | Bluetooth | | |
| Head (voice) | Left Touch | 0.101 | 0.369 | | 0.470 | No |
| | Left Tilt | 0.092 | 0.369 | | 0.461 | No |
| | Right Touch | 0.128 | 0.369 | | 0.497 | No |
| | Right Tilt | 0.121 | 0.369 | | 0.490 | No |
| Body-worn (voice) | Rear | 0.518 | 0.185 | | 0.703 | No |
| | Front | 0.196 | 0.185 | | 0.381 | No |
| | Rear | 0.518 | | 0.033 | 0.551 | No |
| | Front | 0.196 | | 0.033 | 0.229 | No |
| Body-worn (Data) | Rear | 1.309 | | 0.033 | 1.342 | No |
| | Front | 0.696 | | 0.033 | 0.729 | No |
| | Edge 1 | 0.294 | | 0.033 | 0.327 | No |
| | Edge 2 | 0.400 | | 0.033 | 0.433 | No |
| | Edge 3 | 0.586 | | 0.033 | 0.619 | No |
| | Edge 4 | 0.137 | | 0.033 | 0.170 | No |

Note:

- According to KDB 447498 D01 General RF Exposure Guidance, when the simultaneous transmission SAR is less than 1.6 W/Kg, SPLSR assessment is not required.
- SPLSR mean is "The SAR to Peak Location Separation Ratio "

APPENDIX A. SAR SYSTEM CHECK DATA

Test Laboratory: AGC Lab

Date: July 20,2015

System Check Head 835 MHz

DUT: Dipole 835MHz Type: SID 835

Communication System CW; Communication System Band: D835 (835.0 MHz); Duty Cycle: 1:1;
Frequency: 835 MHz; Medium parameters used: $f = 835$ MHz; $\sigma = 0.89$ mho/m; $\epsilon_r = 41.98$; $\rho = 1000$ kg/m³ ;
Phantom section: Flat Section; Input Power=18dBm
Ambient temperature (°C): 22.7, Liquid temperature (°C): 22.4

DASY Configuration:

- Probe: EX3DV4 - SN3953; ConvF(10.12, 10.12, 10.12); Calibrated:11/06/2014;
- Sensor-Surface: 2mm (Mechanical Surface Detection), $z = 1.0$, 31.0
- Electronics: DAE4 Sn1398; Calibrated: 03/11/2015
- Phantom: SAM (20deg probe tilt) with CRP v5.0; Type: QD000P40CD;
- DASY52 52.8.7(1137); SEMCAD X 14.6.10(7164)

Configuration/System Check 835MHz Head/Area Scan (7x12x1): Measurement grid: $dx=15$ mm, $dy=15$ mm
Maximum value of SAR (measured) = 0.860 W/kg

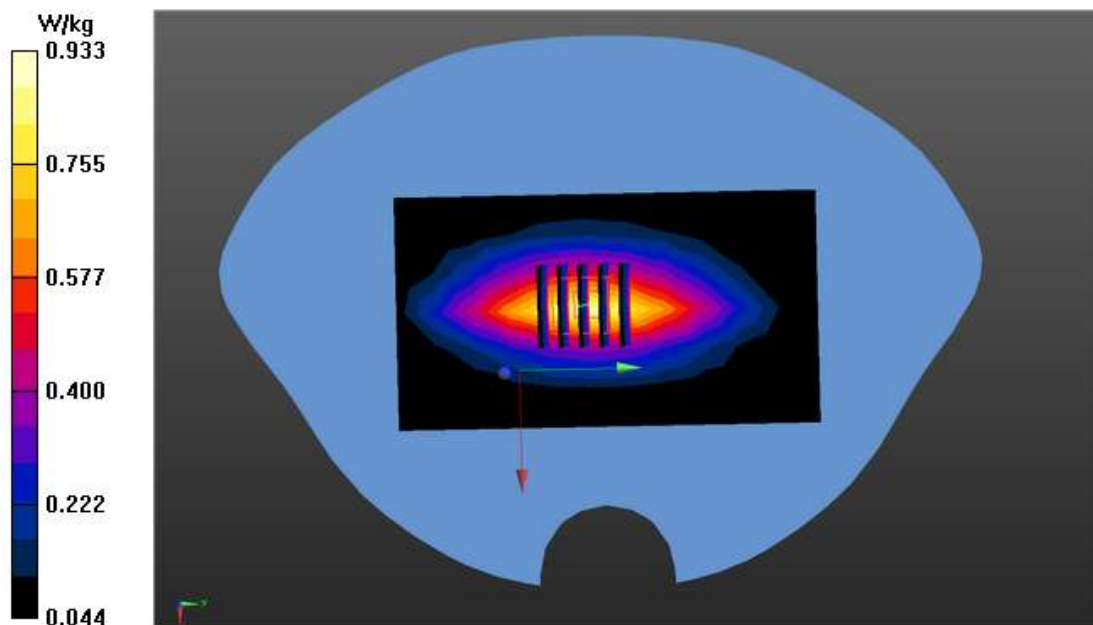
Configuration/System Check 835MHz Head/Zoom Scan (5x5x7)/Cube 0: Measurement grid: $dx=8$ mm, $dy=8$ mm, $dz=5$ mm

Reference Value = 29.329 V/m; Power Drift =-0.12 dB

Peak SAR (extrapolated) = 1.17 W/kg

SAR(1 g) = 0.660 W/kg; SAR(10 g) = 0.390 W/kg

Maximum value of SAR (measured) = 0.933 W/kg



Test Laboratory: AGC Lab

Date: July 20,2015

System Check Body 835 MHz

DUT: Dipole 835 MHz Type: SID 835

Communication System CW; Communication System Band: D835 (835.0 MHz); Duty Cycle: 1:1;

Frequency: 835 MHz; Medium parameters used: $f = 835$ MHz; $\sigma=0.95$ mho/m; $\epsilon_r=56.08$; $\rho= 1000$ kg/m³ ;

Phantom section: Flat Section; Input Power=18dBm

Ambient temperature (°C): 22.7, Liquid temperature (°C): 22.6

DASY Configuration:

- Probe: EX3DV4 - SN3953; ConvF(10.08,10.08, 10.08); Calibrated: 11/06/2014;
- Sensor-Surface: 2mm (Mechanical Surface Detection), $z = 1.0, 31.0$
- Electronics: DAE4 Sn1398; Calibrated: 03/11/2015
- Phantom: SAM (20deg probe tilt) with CRP v5.0; Type: QD000P40CD;
- DASY52 52.8.7(1137); SEMCAD X 14.6.10(7164)

Configuration/System Check 835MHz Body/ Area Scan (7x12x1): Measurement grid: $dx=15$ mm, $dy=15$ mm
Maximum value of SAR (measured) = 0.878 W/kg

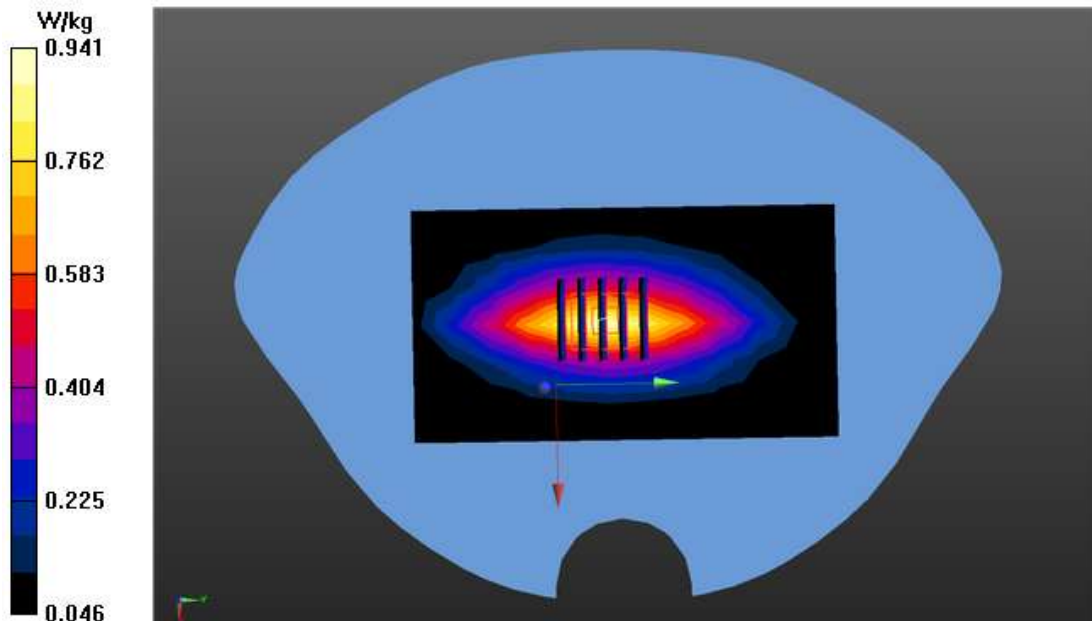
Configuration/System Check 835MHz Body/Zoom Scan (5x5x7)/Cube 0: Measurement grid: $dx=8$ mm, $dy=8$ mm, $dz=5$ mm

Reference Value = 29.471 V/m; Power Drift = 0.08 dB

Peak SAR (extrapolated) = 1.19 W/kg

SAR(1 g) = 0.671 W/kg; SAR(10 g) = 0.397 W/kg

Maximum value of SAR (measured) = 0.941 W/kg



Test Laboratory: AGC Lab
System Check Head 1900MHz
DUT: Dipole 1900 MHz; Type: SID 1900

Date: July 22,2015

Communication System: CW; Communication System Band: D1900 (1900.0 MHz); Duty Cycle:1:1;
Frequency: 1900 MHz; Medium parameters used: $f = 1900$ MHz; $\sigma = 1.40$ mho/m; $\epsilon_r = 40.00$; $\rho = 1000$ kg/m³ ;
Phantom section: Flat Section; Input Power=18dBm
Ambient temperature (°C):22.4, Liquid temperature (°C): 22.1

DASY Configuration:

- Probe: EX3DV4 - SN3953; ConvF(7.89, 7.89, 7.89); Calibrated: 11/06/2014;
- Sensor-Surface: 2mm (Mechanical Surface Detection), $z = 1.0, 31.0$
- Electronics: DAE4 Sn1398; Calibrated: 03/11/2015
- Phantom: SAM (20deg probe tilt) with CRP v5.0; Type: QD000P40CD;
- DASY52 52.8.7(1137); SEMCAD X 14.6.10(7164)

Configuration/System Check 1900MHz Head/ Area Scan (6x9x1): Measurement grid: $dx=15$ mm, $dy=15$ mm
Maximum value of SAR (measured) = 3.53 W/k

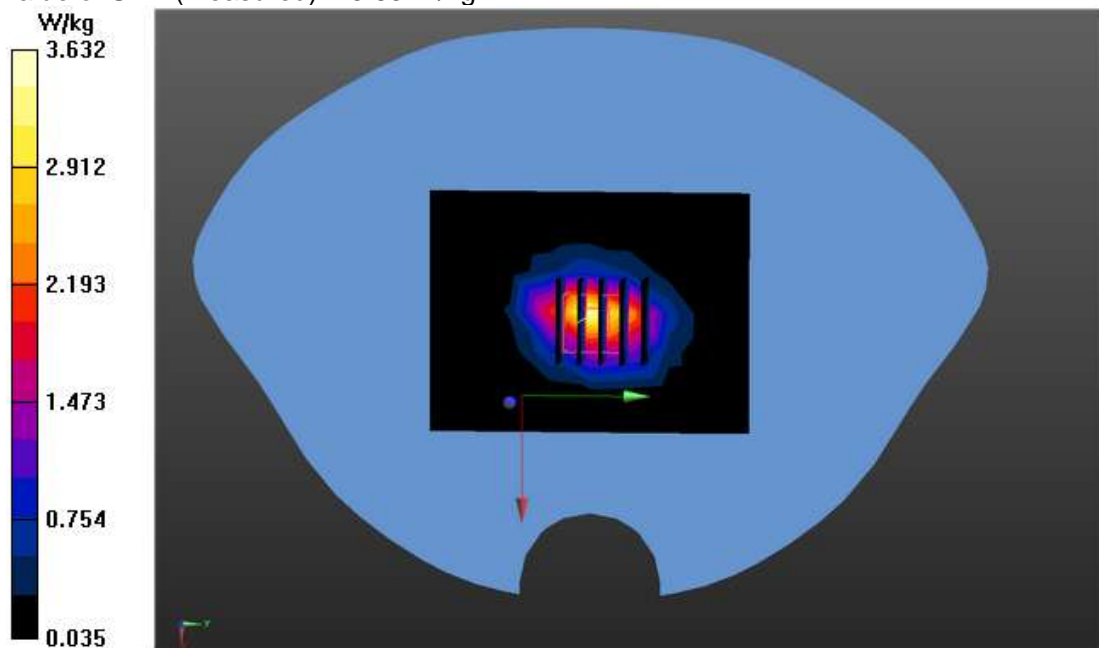
Configuration/System Check 1900MHz Head/Zoom Scan (5x5x7)/ Cube 0: Measurement grid: $dx=8$ mm, $dy=8$ mm, $dz=5$ mm

Reference Value = 50.455 V/m; Power Drift = -0.09 dB

Peak SAR (extrapolated) = 4.85 W/kg

SAR(1 g) = 2.53 W/kg; SAR(10 g) = 1.27 W/kg

Maximum value of SAR (measured) = 3.63 W/kg



Test Laboratory: AGC Lab

Date: July 22,2015

System Check Body 1900MHz

DUT: Dipole 1900 MHz; Type: SID 1900

Communication System: CW; Communication System Band: D1900 (1900.0 MHz); Duty Cycle:1:1;

Frequency: 1900 MHz; Medium parameters used: $f = 1900$ MHz; $\sigma = 1.52$ mho/m; $\epsilon_r = 53.11$; $\rho = 1000$ kg/m³ ;

Phantom section: Flat Section; Input Power=18dBm

Ambient temperature (°C):22.4, Liquid temperature (°C): 22.3

DASY Configuration:

- Probe: EX3DV4 - SN3953; ConvF(7.79,7.79,7.79); Calibrated: 11/06/2014;
- Sensor-Surface: 2mm (Mechanical Surface Detection), $z = 1.0, 31.0$
- Electronics: DAE4 Sn1398; Calibrated: 03/11/2015
- Phantom: SAM (20deg probe tilt) with CRP v5.0; Type: QD000P40CD;
- DASY52 52.8.7(1137); SEMCAD X 14.6.10(7164)

Configuration/System Check 1900MHz Body/ Area Scan (6x9x1): Measurement grid: $dx=15$ mm, $dy=15$ mm
Maximum value of SAR (measured) = 3.62 W/k

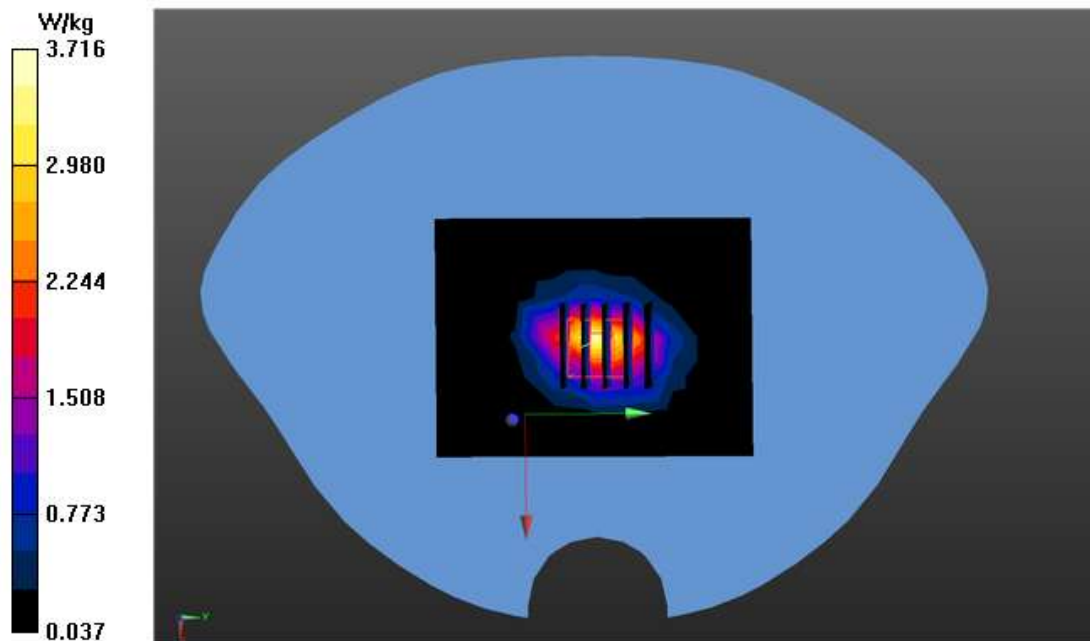
Configuration/System Check 1900MHz Body/Zoom Scan (5x5x7)/ Cube 0: Measurement grid: $dx=8$ mm, $dy=8$ mm, $dz=5$ mm

Reference Value = 50.865 V/m; Power Drift = -0.06 dB

Peak SAR (extrapolated) = 4.97 W/kg

SAR(1 g) = 2.59 W/kg; SAR(10 g) = 1.3 W/kg

Maximum value of SAR (measured) = 3.72 W/kg



APPENDIX B. SAR MEASUREMENT DATA

Test Laboratory: AGC Lab

Date: July 20,2015

GSM 850 Mid-Touch-Right <SIM 1>

DUT: 2G GSM Mobile Phone; Type: Noit 18

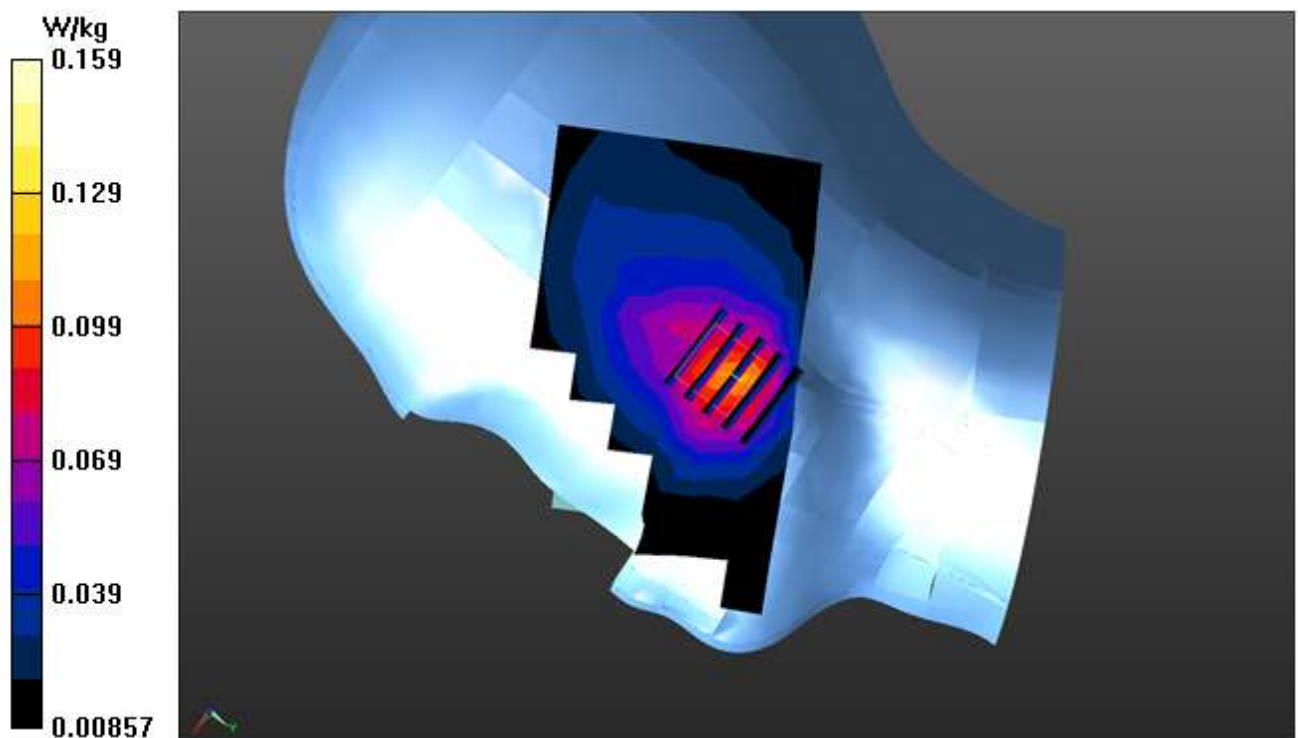
Communication System: UID 0, Generic GSM (0); Communication System Band: GSM 850 (824.2 – 848.8 MHz);
Duty Cycle: 1:8.3; Frequency: 836.6 MHz; Medium parameters used: $f = 835$ MHz; $\sigma = 0.91$ mho/m; $\epsilon_r = 41.73$;
 $\rho = 1000$ kg/m³ ;
Phantom section: Right Section
Ambient temperature (°C):22.7, Liquid temperature (°C): 22.4

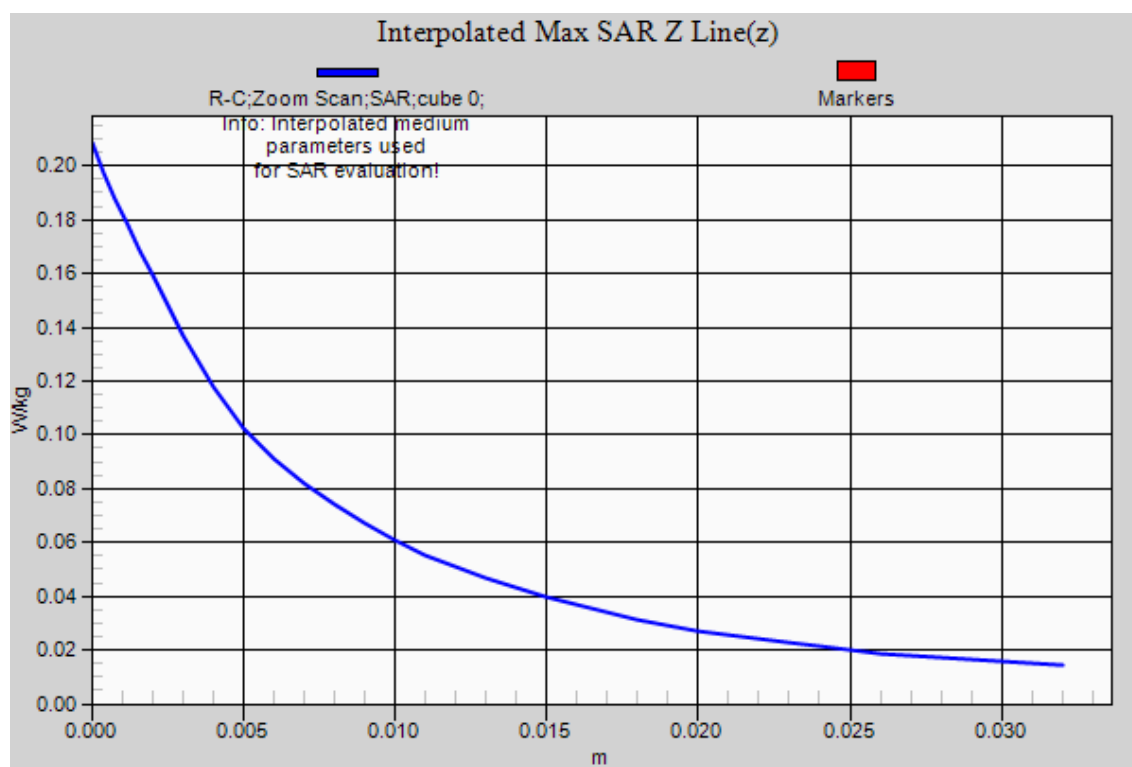
DASY Configuration:

- Probe: EX3DV4 - SN3953; ConvF(10.12, 10.12, 10.12); Calibrated:11/06/2014;
- Sensor-Surface: 2mm (Mechanical Surface Detection), $z = 1.0, 31.0$
- Electronics: DAE4 Sn1398; Calibrated: 03/11/2015
- Phantom: SAM (20deg probe tilt) with CRP v5.0; Type: QD000P40CD;
- DASY52 52.8.7(1137); SEMCAD X 14.6.10(7164)

RIGHT HEAD/R-C/Area Scan (7x11x1): Measurement grid: $dx=15$ mm, $dy=15$ mm
Maximum value of SAR (measured) = 0.113 W/kg

RIGHT HEAD/R-C/Zoom Scan (5x5x7)/Cube 0: Measurement grid: $dx=8$ mm, $dy=8$ mm, $dz=5$ mm
Reference Value = 5.343 V/m; Power Drift = -0.03 dB
Peak SAR (extrapolated) = 0.208 W/kg
SAR(1 g) = 0.106 W/kg; SAR(10 g) = 0.062 W/kg
Maximum value of SAR (measured) = 0.159 W/kg





Test Laboratory: AGC Lab
GSM 850 Mid- Body- Back(MS)<SIM 1>
DUT: 2G GSM Mobile Phone; Type: Noit 18

Date: July 20,2015

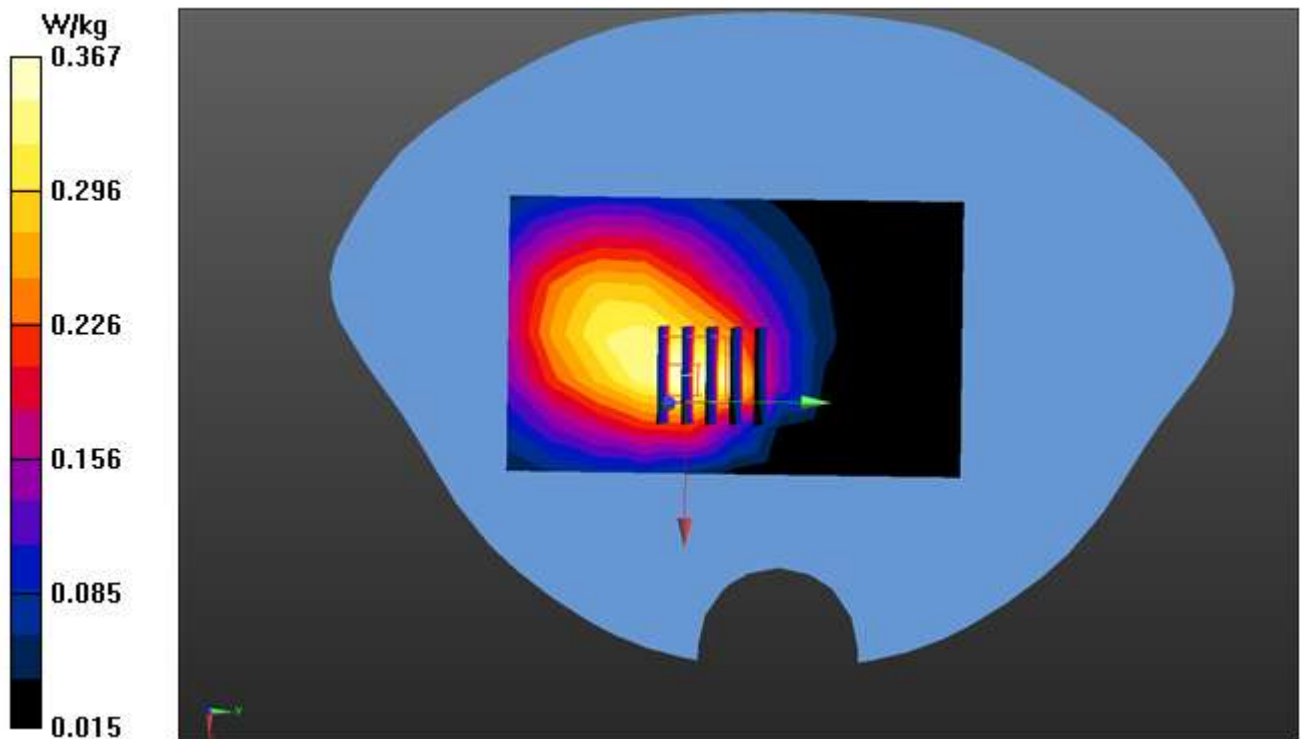
Communication System: UID 0, Generic GSM (0); Communication System Band: GSM 850 (824.2 – 848.8 MHz);
Duty Cycle: 1:8.3;Frequency: 836.6 MHz; Medium parameters used: $f = 835$ MHz; $\sigma = 0.98$ mho/m; $\epsilon_r = 55.79$
 $\rho = 1000$ kg/m³ ;
Phantom section: Flat Section
Ambient temperature (°C):22.7, Liquid temperature (°C): 22.6

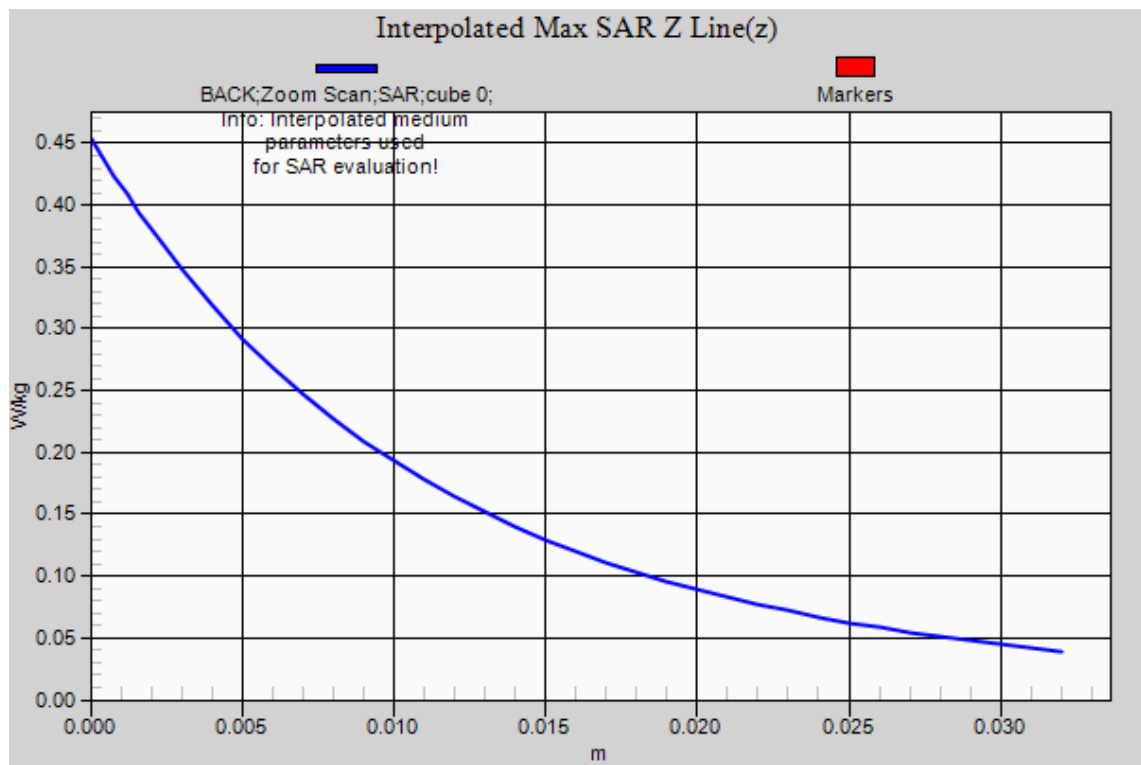
DASY Configuration:

- Probe: EX3DV4 - SN3953; ConvF(10.08,10.08, 10.08); Calibrated: 11/06/2014;
- Sensor-Surface: 2mm (Mechanical Surface Detection), $z = 1.0, 31.0$
- Electronics: DAE4 Sn1398; Calibrated: 03/11/2015
- Phantom: SAM (20deg probe tilt) with CRP v5.0; Type: QDOVA002AA;
- DASY52 52.8.7(1137); SEMCAD X 14.6.10(7164)

BODY/BACK/Area Scan (7x11x1): Measurement grid: $dx=15$ mm, $dy=15$ mm
Maximum value of SAR (measured) = 0.386 W/kg

BODY/BACK/Zoom Scan (5x5x7)/Cube 0: Measurement grid: $dx=8$ mm, $dy=8$ mm, $dz=5$ mm
Reference Value = 11.943 V/m; Power Drift = -0.14 dB
Peak SAR (extrapolated) = 0.453 W/kg
SAR(1 g) = 0.302 W/kg; SAR(10 g) = 0.197 W/kg
Maximum value of SAR (measured) = 0.367 W/kg





Test Laboratory: AGC Lab
GPRS 850 Mid-Touch- Right (2up) <SIM 1>
DUT: 2G GSM Mobile Phone; Type: Noit 18

Date: July 20,2015

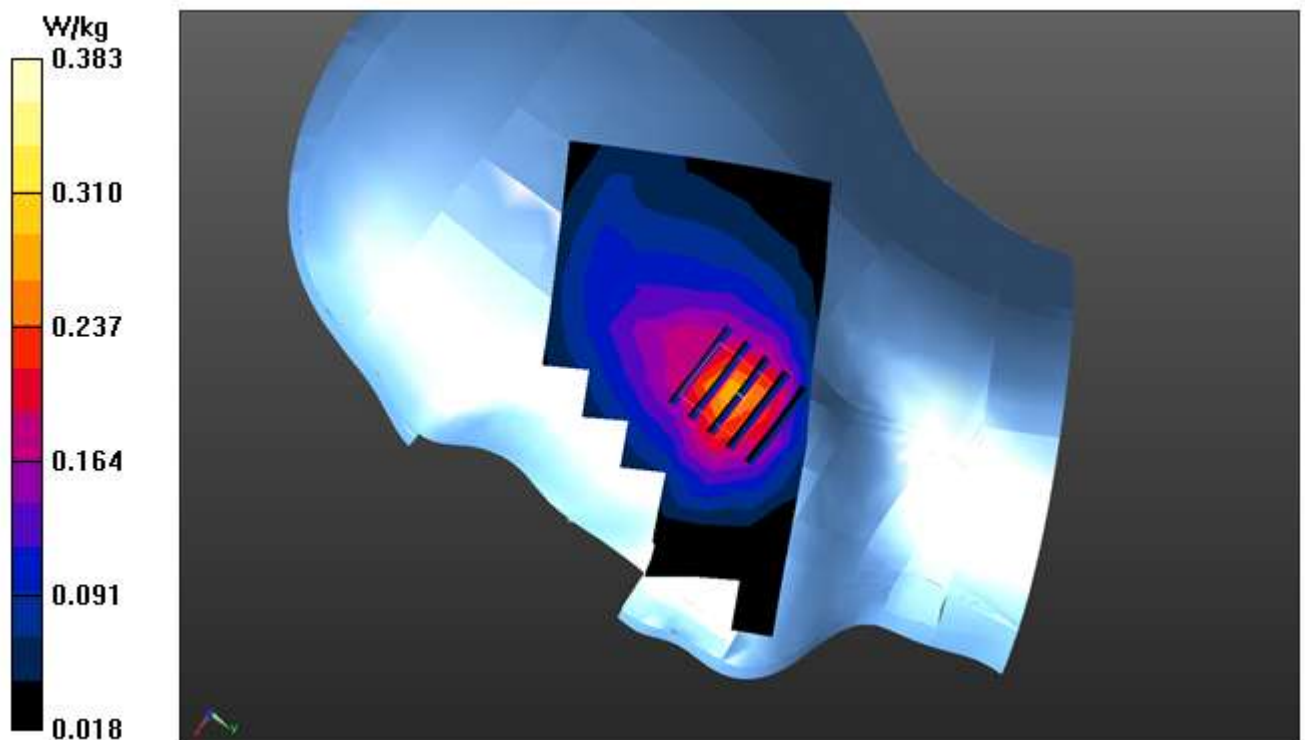
Communication System: : GPRS-2Slot; Communication System Band: GSM 850 (824.2 – 848.8 MHz); Duty Cycle:1:4.2; Frequency: 836.6 MHz; Medium parameters used: $f = 836.6$ MHz; $\sigma = 0.91$ mho/m; $\epsilon_r = 41.73$; $\rho = 1000$ kg/m³ ;
Phantom section: Right Section
Ambient temperature (°C):22.7, Liquid temperature (°C): 22.4

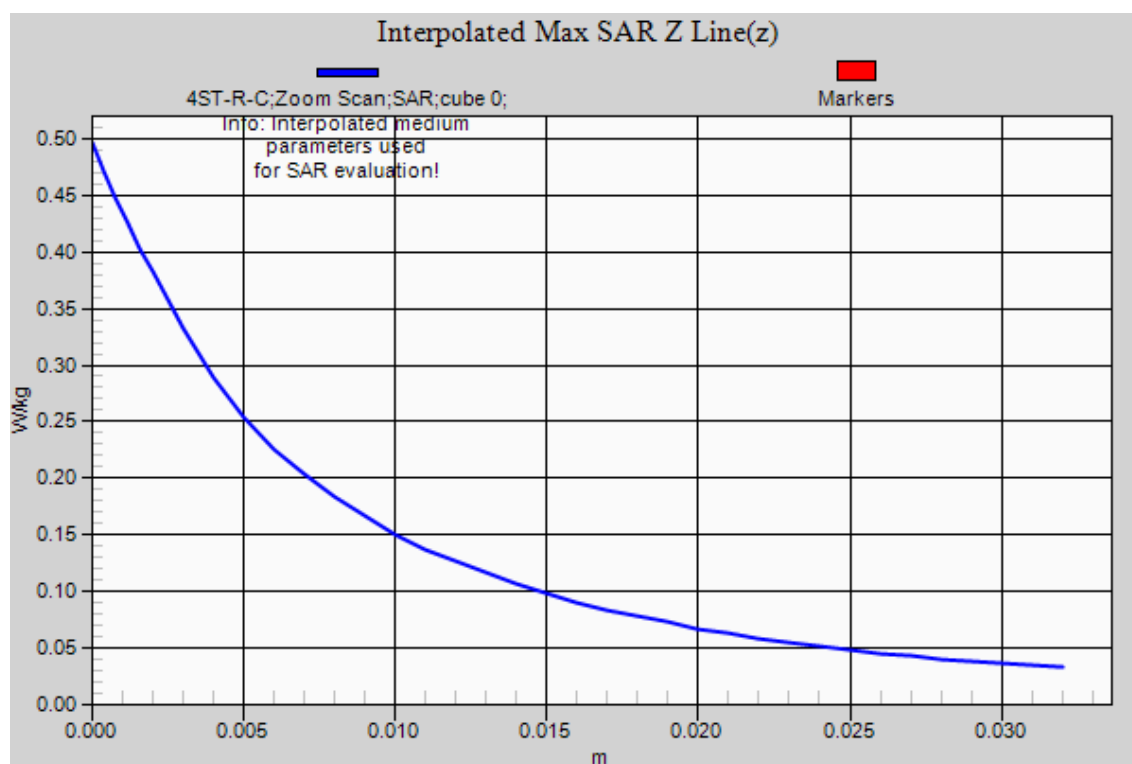
DASY Configuration:

- Probe: EX3DV4 - SN3953; ConvF(10.12, 10.12, 10.12); Calibrated:11/06/2014;
- Sensor-Surface: 2mm (Mechanical Surface Detection), $z = 1.0, 31.0$
- Electronics: DAE4 Sn1398; Calibrated: 03/11/2015
- Phantom: SAM (20deg probe tilt) with CRP v5.0; Type: QD000P40CD;
- DASY52 52.8.7(1137); SEMCAD X 14.6.10(7164)

RIGHT HEAD/2ST-R-C/Area Scan (7x11x1): Measurement grid: $dx=15$ mm, $dy=15$ mm
Maximum value of SAR (measured) = 0.287 W/kg

RIGHT HEAD/2ST-R-C/Zoom Scan (5x5x7)/Cube 0: Measurement grid: $dx=8$ mm, $dy=8$ mm, $dz=5$ mm
Reference Value = 8.632 V/m; Power Drift = -0.20 dB
Peak SAR (extrapolated) = 0.496 W/kg
SAR(1 g) = 0.261 W/kg; SAR(10 g) = 0.156 W/kg
Maximum value of SAR (measured) = 0.383 W/kg





Test Laboratory: AGC Lab
GPRS 850 Mid- Body- Back (2up) < SIM 1>
DUT: 2G GSM Mobile Phone; Type: Noit 18

Date: July 20,2015

Communication System: GPRS-2 Slot; Communication System Band: GSM 850 (824.2 – 848.8 MHz); Duty Cycle:1:4.2;;Frequency: 836.6 MHz; Medium parameters used: $f = 835$ MHz; $\sigma = 0.98$ mho/m; $\epsilon_r = 55.79$; $\rho = 1000$ kg/m³ ;

Phantom section: Flat Section

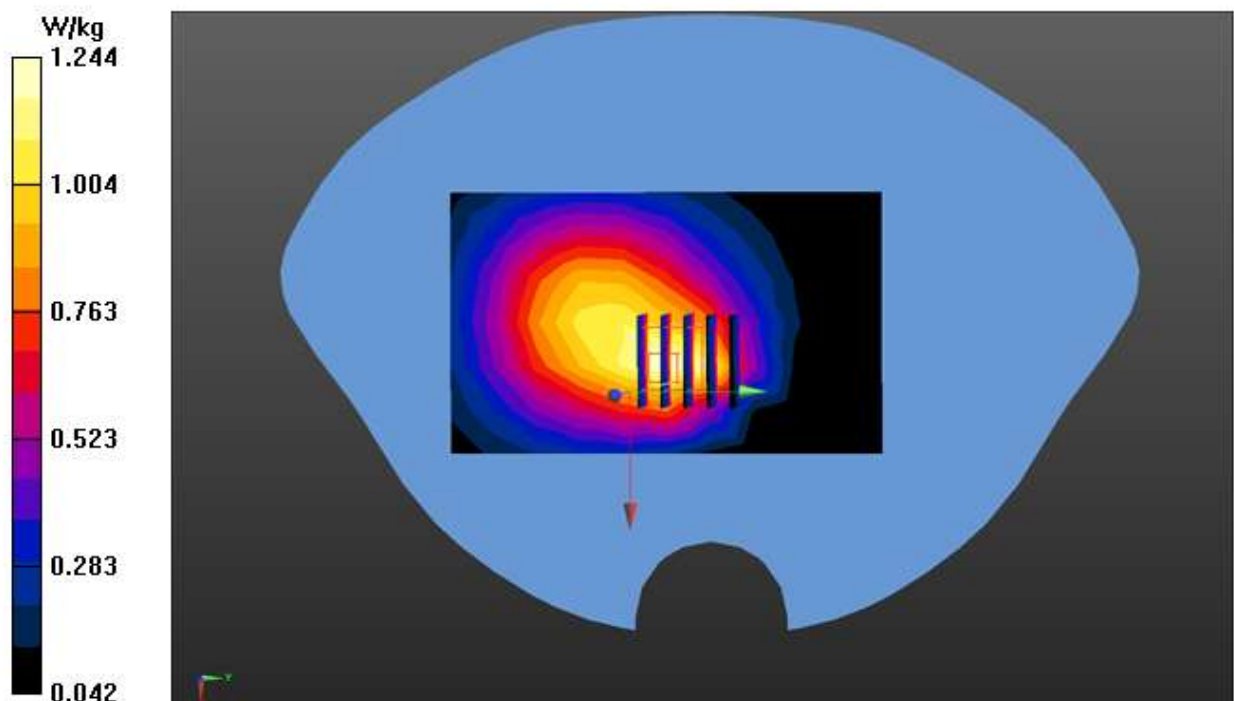
Ambient temperature (°C):22.7, Liquid temperature (°C): 22.6

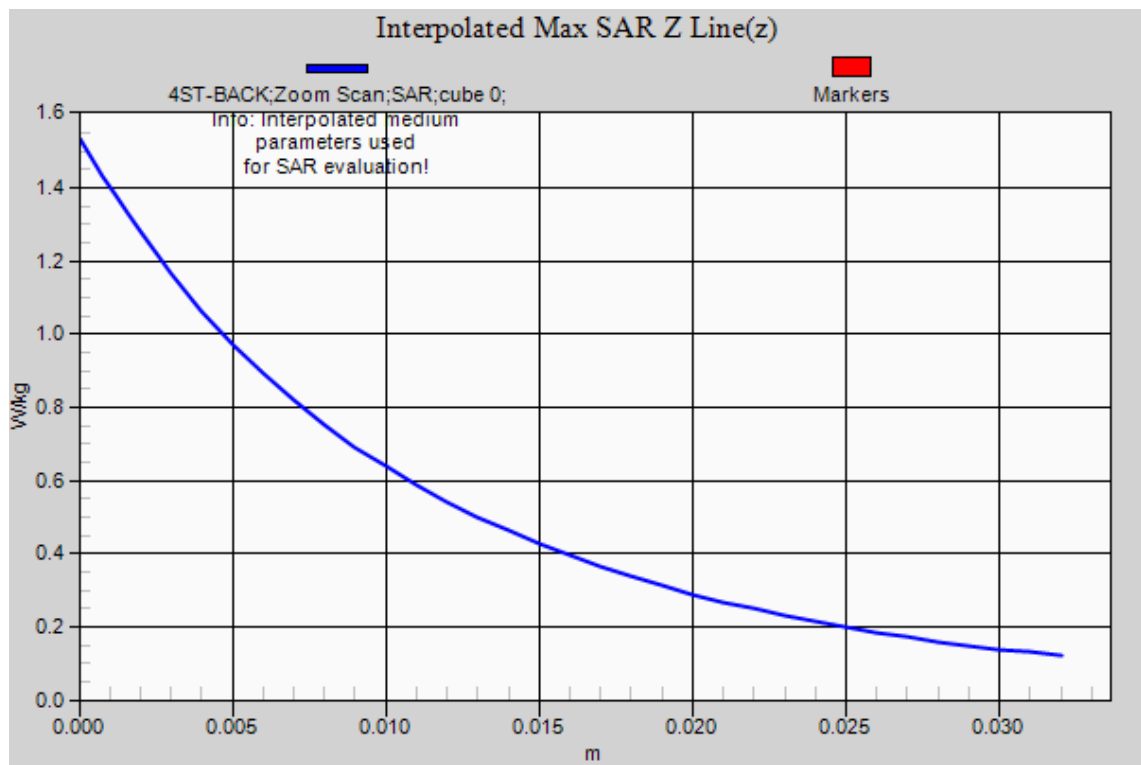
DASY Configuration:

- Probe: EX3DV4 - SN3953; ConvF(10.08,10.08, 10.08); Calibrated: 11/06/2014;
- Sensor-Surface: 2mm (Mechanical Surface Detection), $z = 1.0, 31.0$
- Electronics: DAE4 Sn1398; Calibrated: 03/11/2015
- Phantom: SAM (20deg probe tilt) with CRP v5.0; Type: QDOVA002AA;
- DASY52 52.8.7(1137); SEMCAD X 14.6.10(7164)

BODY/2ST-BACK/Area Scan (7x11x1): Measurement grid: $dx=15$ mm, $dy=15$ mm
Maximum value of SAR (measured) = 1.26 W/kg

BODY/2ST-BACK/Zoom Scan (5x5x7)/Cube 0: Measurement grid: $dx=8$ mm, $dy=8$ mm, $dz=5$ mm
Reference Value = 29.799 V/m; Power Drift = -0.20 dB
Peak SAR (extrapolated) = 1.53 W/kg
SAR(1 g) = 1 W/kg; SAR(10 g) = 0.655 W/kg
Maximum value of SAR (measured) = 1.24 W/kg





Test Laboratory: AGC Lab
GPRS 850 Mid-Touch- Right (2up) <SIM 2>
DUT: 2G GSM Mobile Phone; Type: Noit 18

Date: July 20,2015

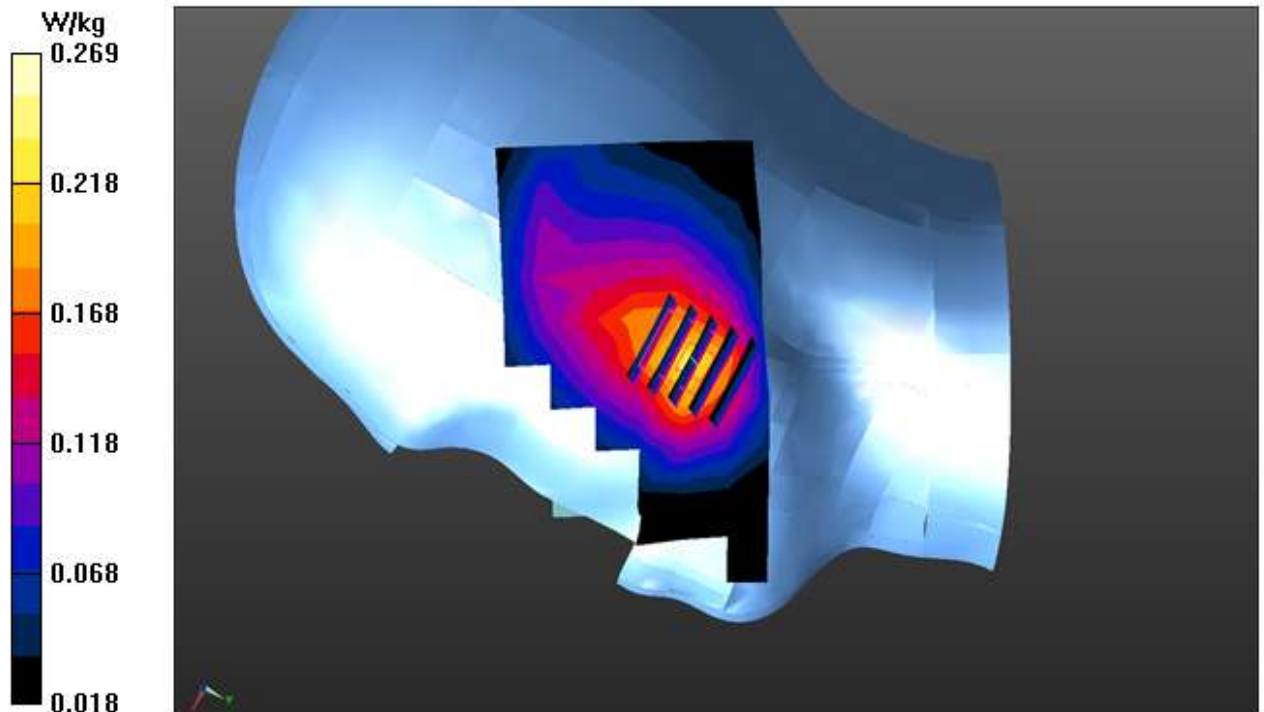
Communication System: : GPRS-2 Slot; Communication System Band: GSM 850 (824.2 – 848.8 MHz); Duty Cycle:1:4.2; Frequency: 836.6 MHz; Medium parameters used: $f = 836.6$ MHz; $\sigma = 0.91$ mho/m; $\epsilon_r = 41.73$; $\rho = 1000$ kg/m³ ;
Phantom section: Right Section
Ambient temperature (°C):22.7, Liquid temperature (°C): 22.4

DASY Configuration:

- Probe: EX3DV4 - SN3953; ConvF(10.12, 10.12, 10.12); Calibrated:11/06/2014;
- Sensor-Surface: 2mm (Mechanical Surface Detection), $z = 1.0, 31.0$
- Electronics: DAE4 Sn1398; Calibrated: 03/11/2015
- Phantom: SAM (20deg probe tilt) with CRP v5.0; Type: QD000P40CD;
- DASY52 52.8.7(1137); SEMCAD X 14.6.10(7164)

RIGHT HEAD/2ST-R-C 2/Area Scan (7x11x1): Measurement grid: $dx=15$ mm, $dy=15$ mm
Maximum value of SAR (measured) = 0.237 W/kg

RIGHT HEAD/2ST-R-C 2/Zoom Scan (5x5x7)/Cube 0: Measurement grid: $dx=8$ mm, $dy=8$ mm, $dz=5$ mm
Reference Value = 8.954 V/m; Power Drift = 0.04 dB
Peak SAR (extrapolated) = 0.334 W/kg
SAR(1 g) = 0.203 W/kg; SAR(10 g) = 0.131 W/kg
Maximum value of SAR (measured) = 0.269 W/kg



Test Laboratory: AGC Lab
GPRS 850 Mid- Body- Back (2up) < SIM 2>
DUT: 2G GSM Mobile Phone; Type: Noit 18

Date: July 20,2015

Communication System: GPRS-2 Slot; Communication System Band: GSM 850 (824.2 – 848.8 MHz); Duty Cycle:1:4.2;;Frequency: 836.6 MHz; Medium parameters used: $f = 835$ MHz; $\sigma = 0.98$ mho/m; $\epsilon_r = 55.79$; $\rho = 1000$ kg/m³ ;

Phantom section: Flat Section

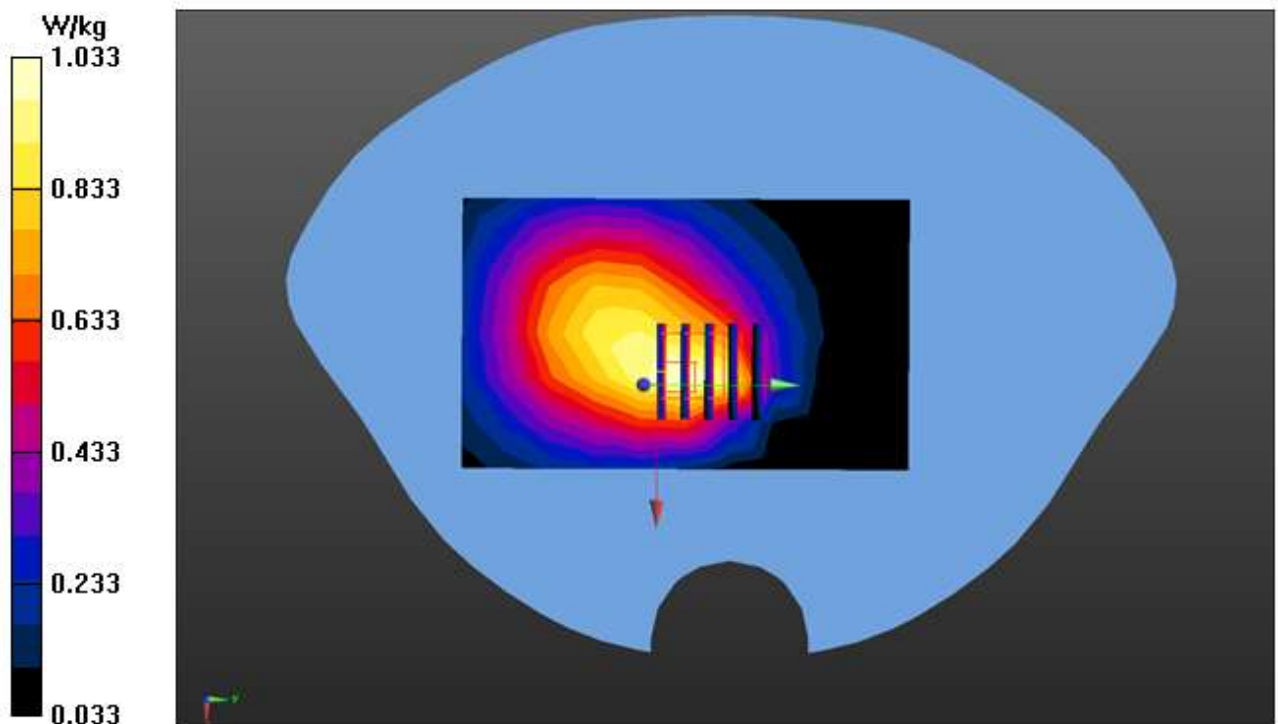
Ambient temperature (°C):22.7, Liquid temperature (°C): 22.6

DASY Configuration:

- Probe: EX3DV4 - SN3953; ConvF(10.08,10.08, 10.08); Calibrated: 11/06/2014;
- Sensor-Surface: 2mm (Mechanical Surface Detection), $z = 1.0, 31.0$
- Electronics: DAE4 Sn1398; Calibrated: 03/11/2015
- Phantom: SAM (20deg probe tilt) with CRP v5.0; Type: QDOVA002AA;
- DASY52 52.8.7(1137); SEMCAD X 14.6.10(7164)

BODY/2ST-BACK 2/Area Scan (7x11x1): Measurement grid: $dx=15$ mm, $dy=15$ mm
Maximum value of SAR (measured) = 1.07 W/kg

BODY/2ST-BACK 2/Zoom Scan (5x5x7)/Cube 0: Measurement grid: $dx=8$ mm, $dy=8$ mm, $dz=5$ mm
Reference Value = 26.972 V/m; Power Drift = -0.19 dB
Peak SAR (extrapolated) = 1.27 W/kg
SAR(1 g) = 0.845 W/kg; SAR(10 g) = 0.541 W/kg
Maximum value of SAR (measured) = 1.03 W/kg



Test Laboratory: AGC Lab
PCS 1900 Mid-Touch-Right <SIM 1>
DUT: 2G GSM Mobile Phone; Type: Noit 18

Date: July 22,2015

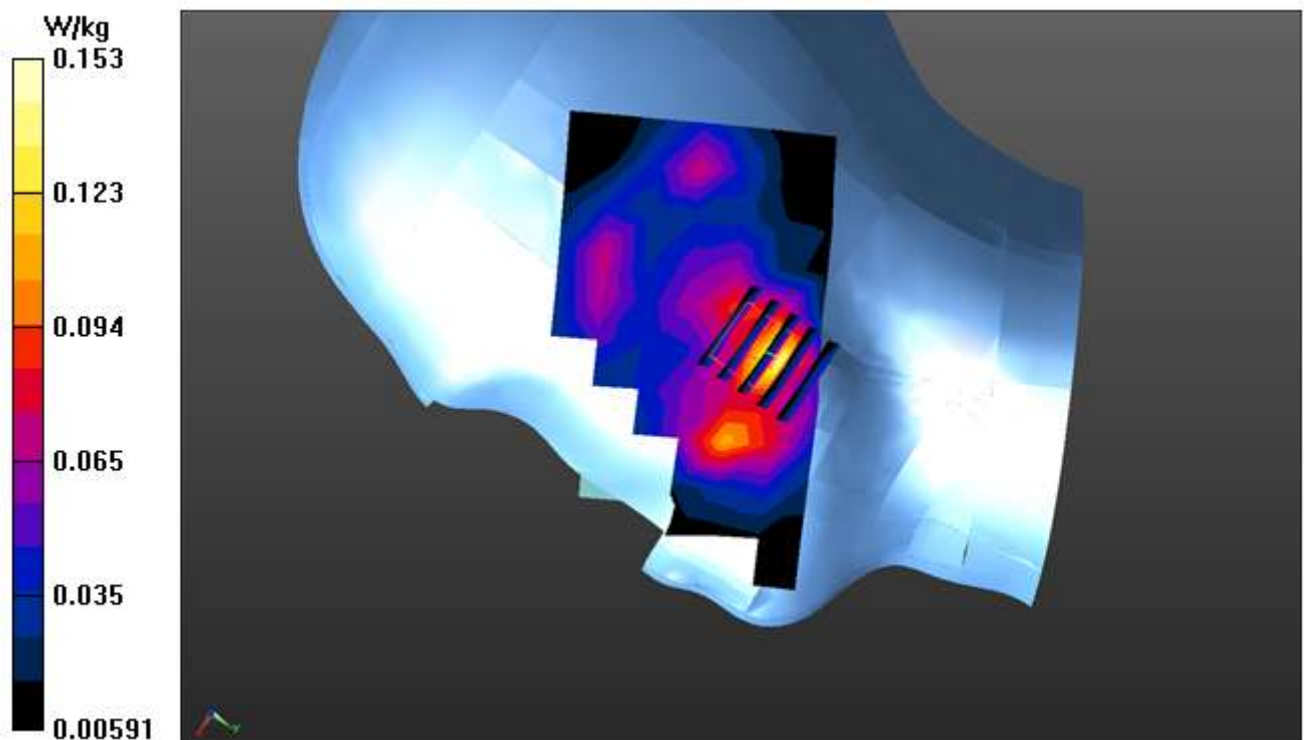
Communication System: UID 0, Generic GSM (0); Communication System Band: PCS 1900 (1850.2 – 1909.8 MHz);
Duty Cycle: 1:8.3; Frequency: 1880 MHz; Medium parameters used: $f = 1900$ MHz; $\sigma = 1.38$ mho/m; $\epsilon_r = 40.27$; $\rho = 1000$ kg/m³ ;
Phantom section: Right Section
Ambient temperature (°C):22.4, Liquid temperature (°C): 22.1

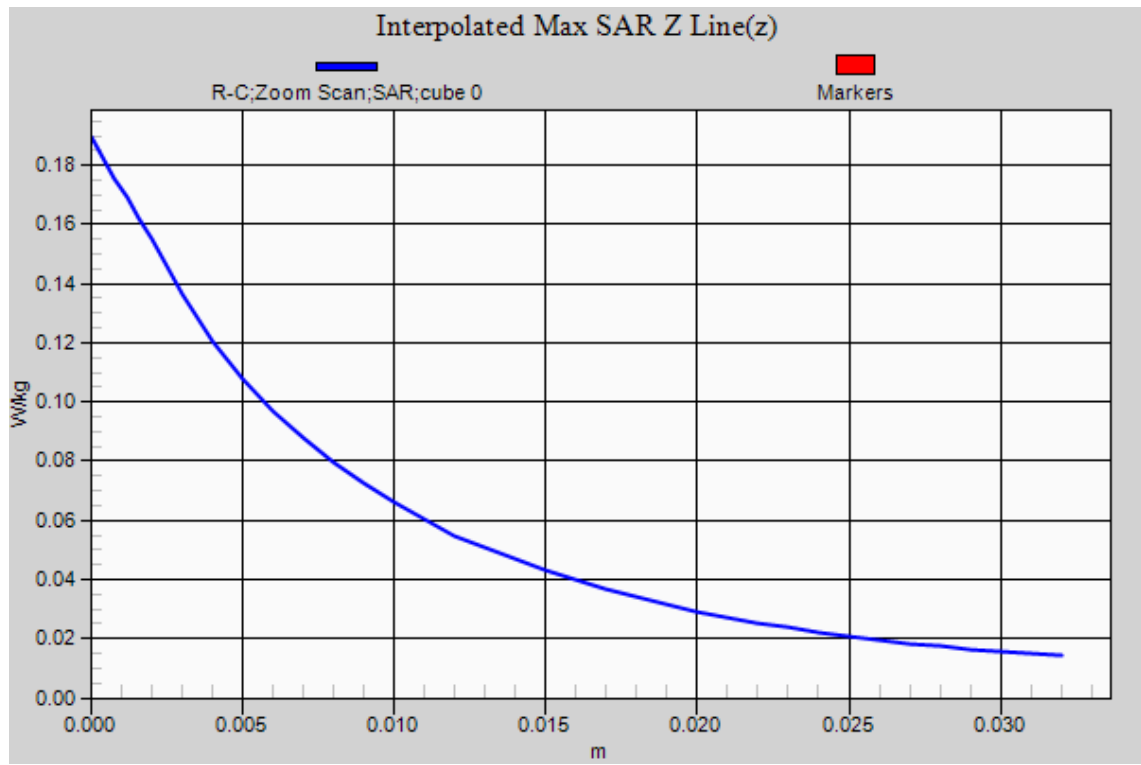
DASY Configuration:

- Probe: EX3DV4 - SN3953; ConvF(7.89, 7.89, 7.89); Calibrated: 11/06/2014;
- Sensor-Surface: 2mm (Mechanical Surface Detection), $z = 1.0, 31.0$
- Electronics: DAE4 Sn1398; Calibrated: 03/11/2015
- Phantom: SAM (20deg probe tilt) with CRP v5.0; Type: QD000P40CD;
- DASY52 52.8.7(1137); SEMCAD X 14.6.10(7164)

RIGHT HEAD/R-C/Area Scan (7x11x1): Measurement grid: $dx=15$ mm, $dy=15$ mm
Maximum value of SAR (measured) = 0.150 W/kg

RIGHT HEAD/R-C/Zoom Scan (5x5x7)/Cube 0: Measurement grid: $dx=8$ mm, $dy=8$ mm, $dz=5$ mm
Reference Value = 8.118 V/m; Power Drift = 0.13 dB
Peak SAR (extrapolated) = 0.189 W/kg
SAR(1 g) = 0.107 W/kg; SAR(10 g) = 0.061 W/kg
Maximum value of SAR (measured) = 0.153 W/kg





Test Laboratory: AGC Lab
PCS 1900 Mid-Body- Back(MS) <SIM1>
DUT: 2G GSM Mobile Phone; Type: Noit 18

Date: July 22,2015

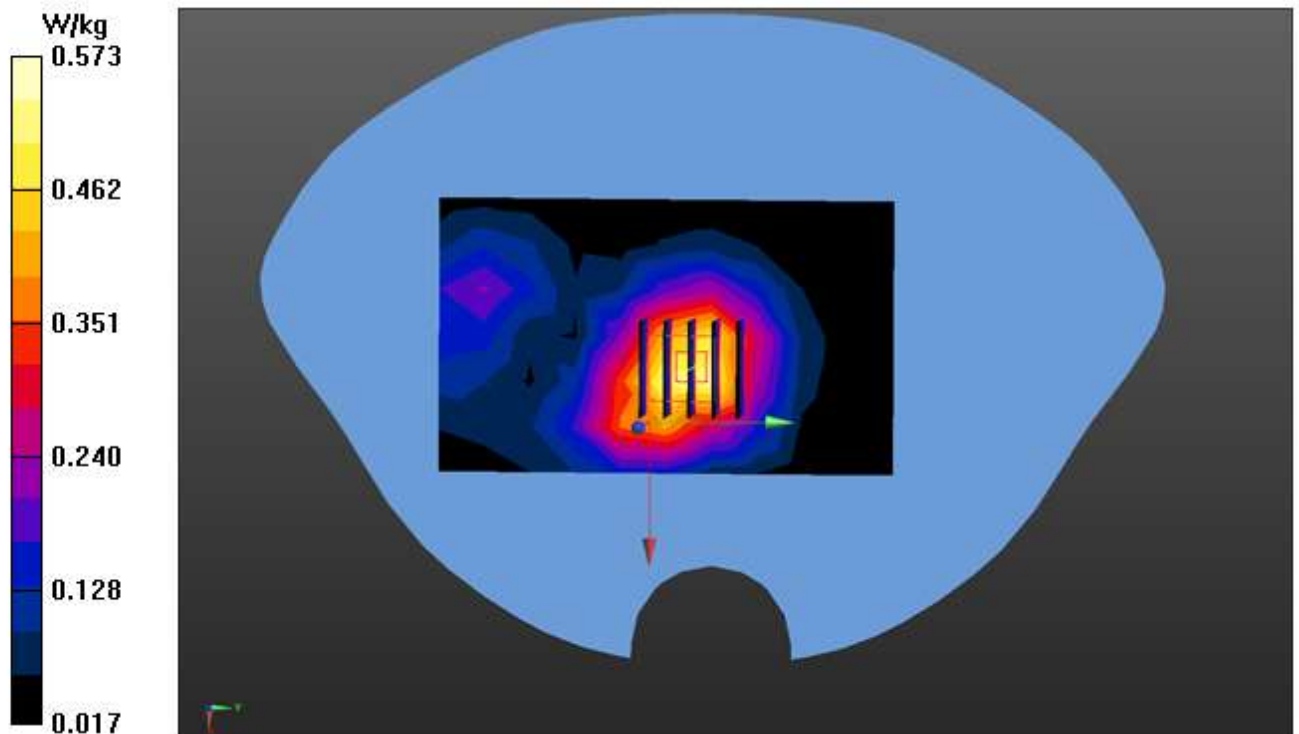
Communication System: UID 0, Generic GSM (0); Communication System Band: PCS 1900 (1850.2 – 1909.8 MHz);
Duty Cycle: 1:8.3; Frequency: 1880 MHz; Medium parameters used: $f = 1900$ MHz; $\sigma = 1.51$ mho/m; $\epsilon_r = 53.69$;
 $\rho = 1000$ kg/m³ ;
Phantom section: Flat Section
Ambient temperature (°C):22.4, Liquid temperature (°C): 22.3

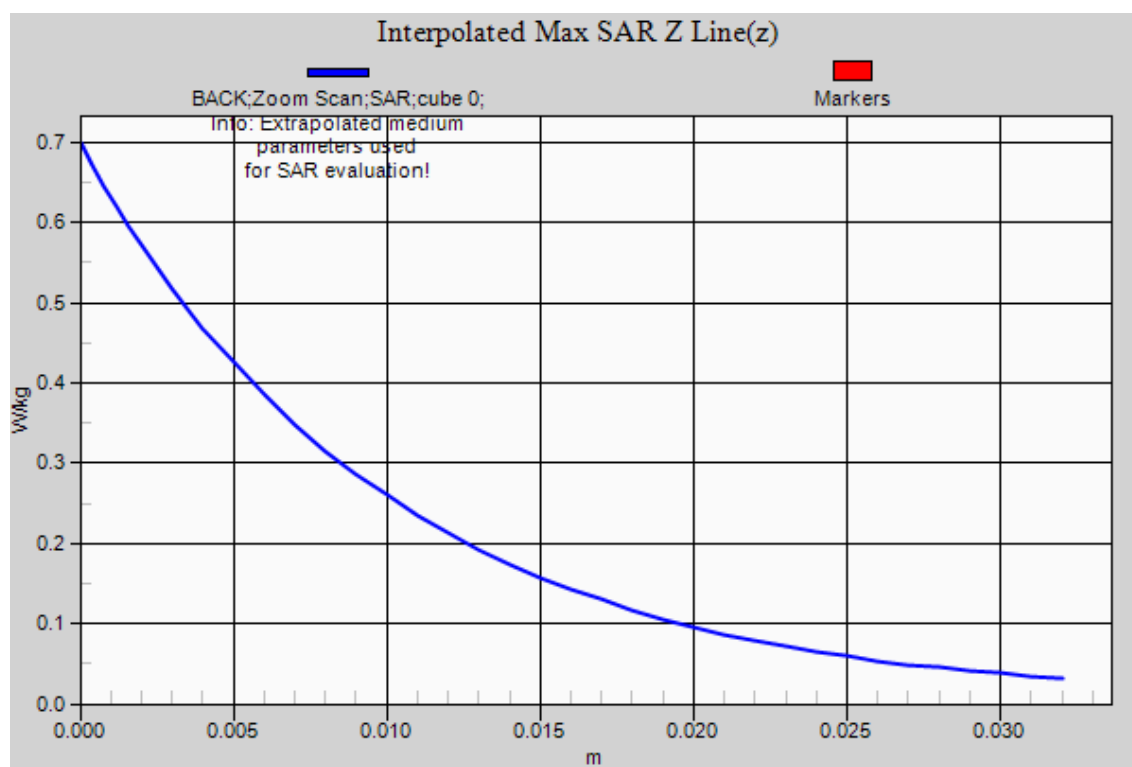
DASY Configuration:

- Probe: EX3DV4 - SN3953; ConvF(7.79,7.79,7.79); Calibrated: 11/06/2014;
- Sensor-Surface: 2mm (Mechanical Surface Detection), $z = 1.0, 31.0$
- Electronics: DAE4 Sn1398; Calibrated: 03/11/2015
- Phantom: SAM (20deg probe tilt) with CRP v5.0; Type: QD000P40CD;
- DASY52 52.8.7(1137); SEMCAD X 14.6.10(7164)

BODY/BACK/Area Scan (7x11x1): Measurement grid: $dx=15$ mm, $dy=15$ mm
Maximum value of SAR (measured) = 0.527 W/kg

BODY/BACK/Zoom Scan (5x5x7)/Cube 0: Measurement grid: $dx=8$ mm, $dy=8$ mm, $dz=5$ mm
Reference Value = 19.455 V/m; Power Drift = -0.15 dB
Peak SAR (extrapolated) = 0.699 W/kg
SAR(1 g) = 0.433 W/kg; SAR(10 g) = 0.262 W/kg
Maximum value of SAR (measured) = 0.573 W/kg





Test Laboratory: AGC Lab
GPRS 1900 Mid-Touch-Right (2up) < SIM 1>
DUT: 2G GSM Mobile Phone; Type: Noit 18

Date: July 22,2015

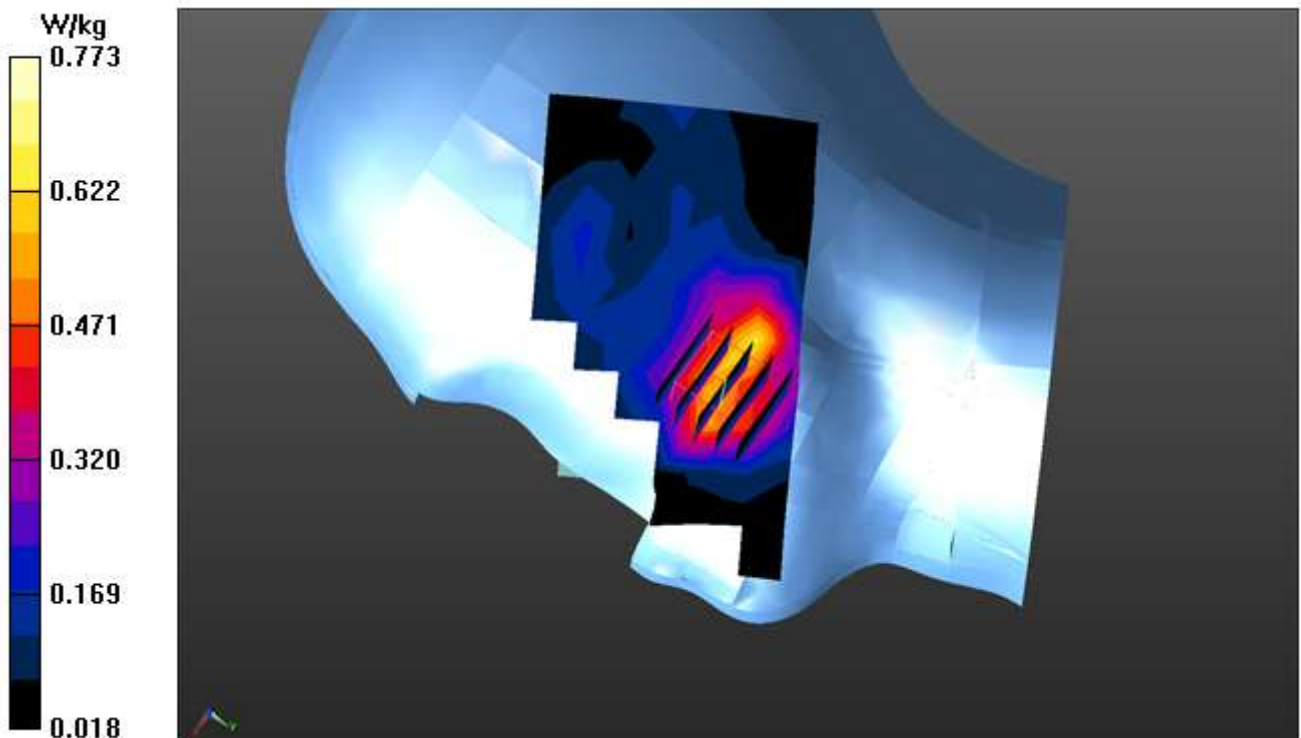
Communication System: GPRS-2 Slot; Communication System Band: PCS 1900 (1850.2 – 1909.8 MHz); Duty Cycle:1:4.2; Frequency: 1880 MHz; Medium parameters used: $f = 1900$ MHz; $\sigma = 1.38$ mho/m; $\epsilon_r = 40.27$; $\rho = 1000$ kg/m³ ;
Phantom section: Right Section
Ambient temperature (°C):22.4, Liquid temperature (°C): 22.1

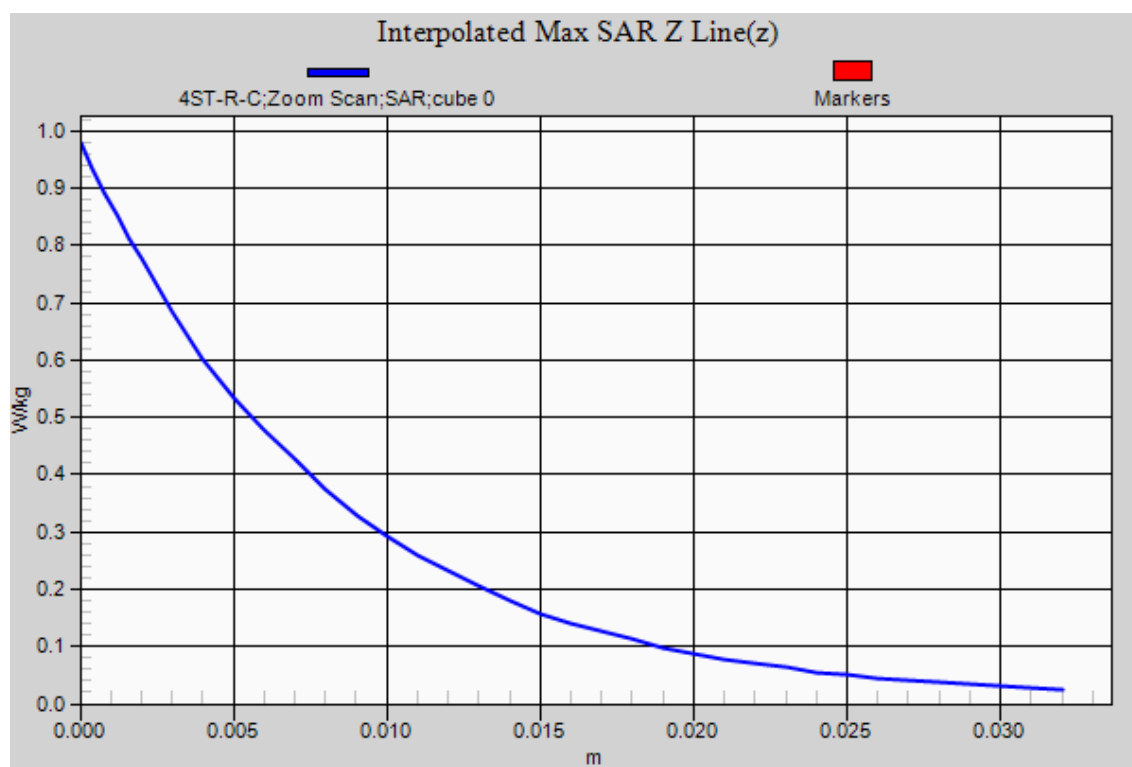
DASY Configuration:

- Probe: EX3DV4 - SN3953; ConvF(7.89, 7.89, 7.89); Calibrated: 11/06/2014;
- Sensor-Surface: 2mm (Mechanical Surface Detection), $z = 1.0, 31.0$
- Electronics: DAE4 Sn1398; Calibrated: 03/11/2015
- Phantom: SAM (20deg probe tilt) with CRP v5.0; Type: QD000P40CD;
- DASY52 52.8.7(1137); SEMCAD X 14.6.10(7164)

RIGHT HEAD/2ST-R-C/Area Scan (7x11x1): Measurement grid: $dx=15$ mm, $dy=15$ mm
Maximum value of SAR (measured) = 0.642 W/kg

RIGHT HEAD/2ST-R-C/Zoom Scan (5x5x7)/Cube 0: Measurement grid: $dx=8$ mm, $dy=8$ mm, $dz=5$ mm
Reference Value = 10.848 V/m; Power Drift = 0.19 dB
Peak SAR (extrapolated) = 0.979 W/kg
SAR(1 g) = 0.535 W/kg; SAR(10 g) = 0.289 W/kg
Maximum value of SAR (measured) = 0.773 W/kg





Test Laboratory: AGC Lab
GPRS 1900 Mid-Body- Back (2up) < SIM 1>
DUT: 2G GSM Mobile Phone; Type: Noit 18

Date: July 22,2015

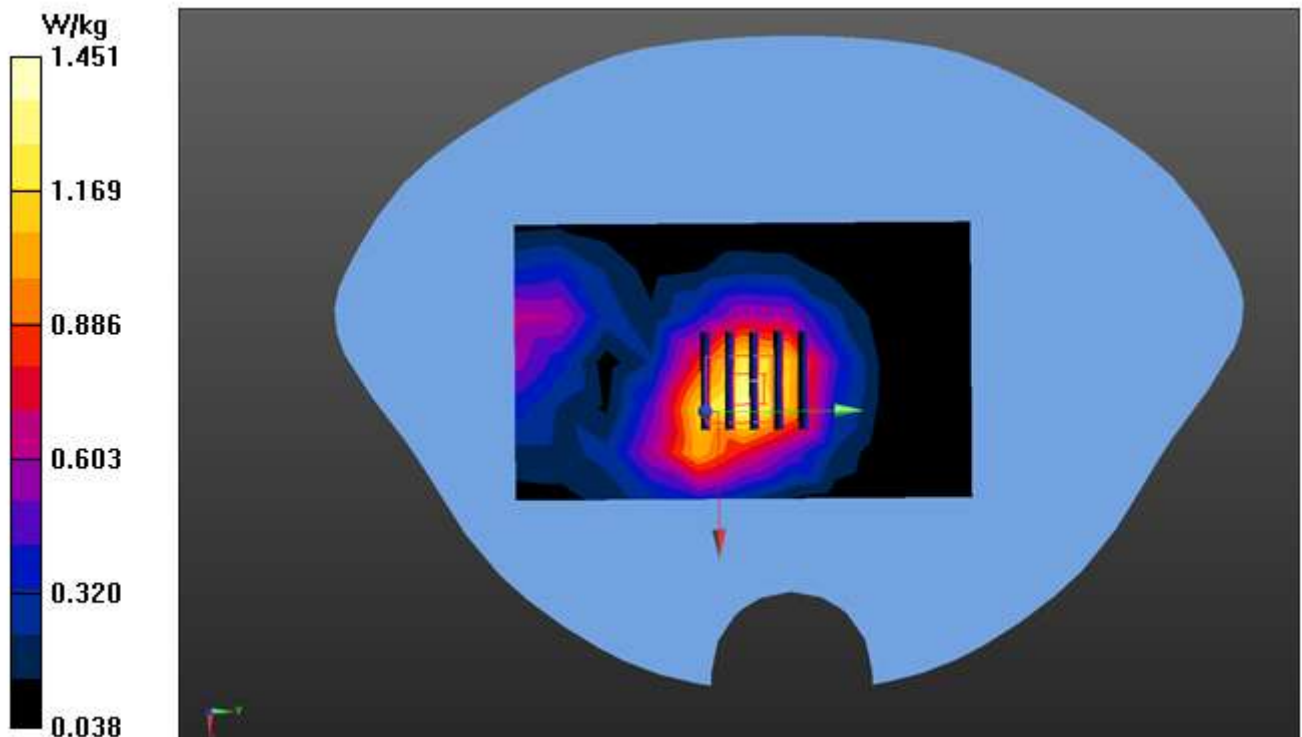
Communication System: GPRS-2 Slot; Communication System Band: PCS 1900 (1850.2 – 1909.8 MHz); Duty Cycle:1:4.2; Frequency: 1880 MHz; Medium parameters used: $f = 1900$ MHz; $\sigma = 1.51$ mho/m; $\epsilon_r = 53.69$; $\rho = 1000$ kg/m³ ;
Phantom section: Flat Section
Ambient temperature (°C):22.4, Liquid temperature (°C): 22.3

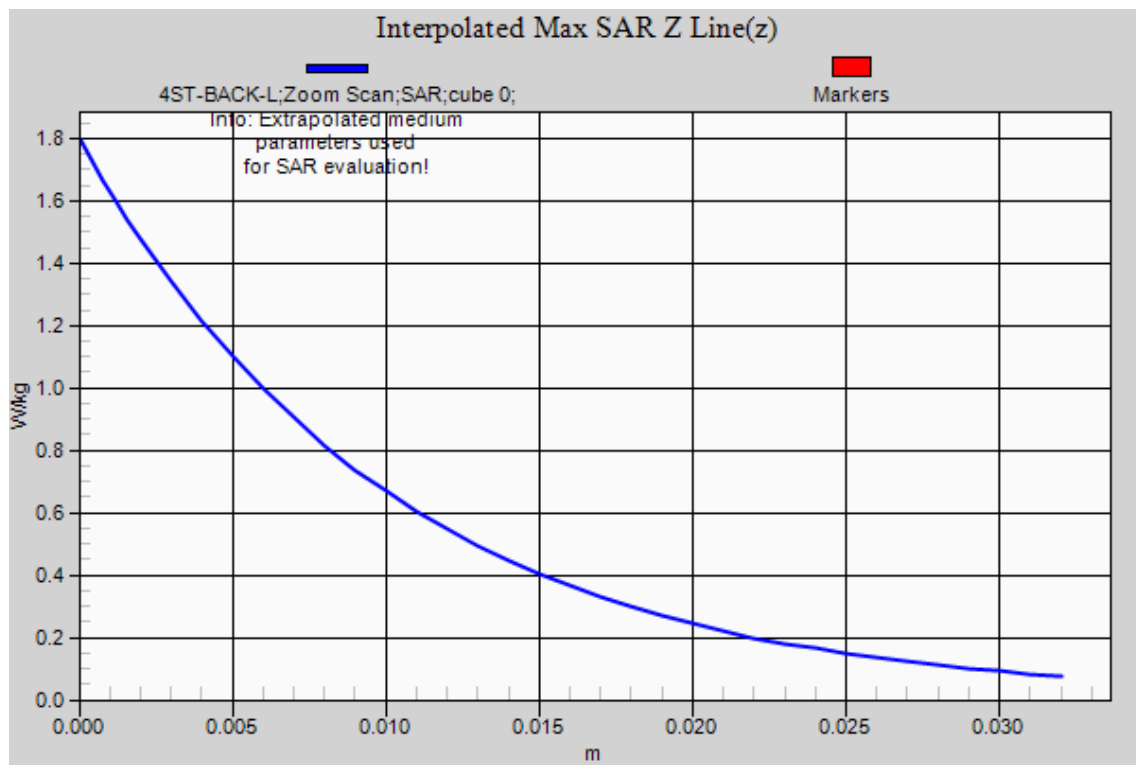
DASY Configuration:

- Probe: EX3DV4 - SN3953; ConvF(7.79,7.79,7.79); Calibrated: 11/06/2014;
- Sensor-Surface: 2mm (Mechanical Surface Detection), $z = 1.0, 31.0$
- Electronics: DAE4 Sn1398; Calibrated: 03/11/2015
- Phantom: SAM (20deg probe tilt) with CRP v5.0; Type: QD000P40CD;
- DASY52 52.8.7(1137); SEMCAD X 14.6.10(7164)

BODY/2ST-BACK /Area Scan (7x11x1): Measurement grid: $dx=15$ mm, $dy=15$ mm
Maximum value of SAR (measured) = 1.39 W/kg

BODY/2ST-BACK /Zoom Scan (5x5x7)/Cube 0: Measurement grid: $dx=8$ mm, $dy=8$ mm, $dz=5$ mm
Reference Value = 29.816 V/m; Power Drift = -0.18 dB
Peak SAR (extrapolated) = 1.80 W/kg
SAR(1 g) = 1.13 W/kg; SAR(10 g) = 0.678 W/kg
Maximum value of SAR (measured) = 1.45 W/kg





Test Laboratory: AGC Lab
GPRS 1900 Mid-Touch-Right (2up) < SIM 2>
DUT: 2G GSM Mobile Phone; Type: Noit 18

Date: July 22,2015

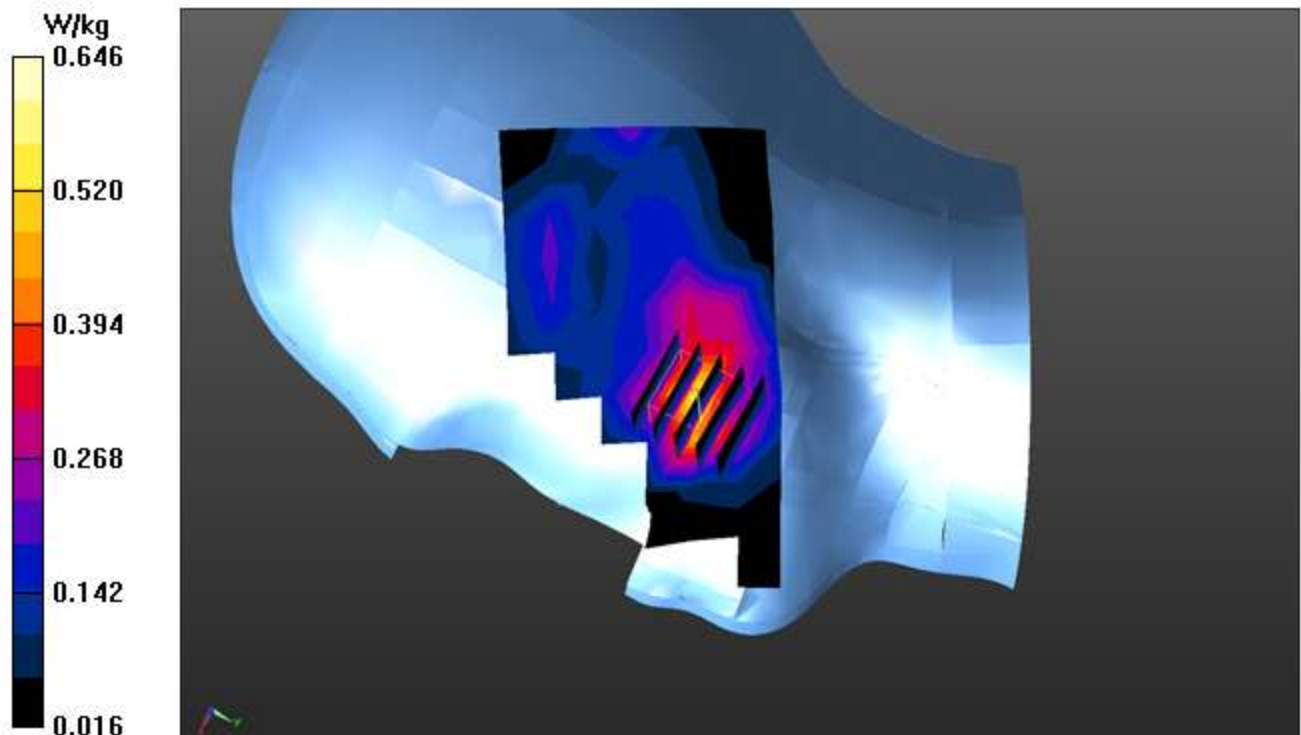
Communication System: GPRS-2 Slot; Communication System Band: PCS 1900 (1850.2 – 1909.8 MHz); Duty Cycle:1:4.2; Frequency: 1880 MHz; Medium parameters used: $f = 1900$ MHz; $\sigma = 1.38$ mho/m; $\epsilon_r = 40.27$; $\rho = 1000$ kg/m³ ;
Phantom section: Right Section
Ambient temperature (°C):22.4, Liquid temperature (°C): 22.1

DASY Configuration:

- Probe: EX3DV4 - SN3953; ConvF(7.89, 7.89, 7.89); Calibrated: 11/06/2014;
- Sensor-Surface: 2mm (Mechanical Surface Detection), $z = 1.0, 31.0$
- Electronics: DAE4 Sn1398; Calibrated: 03/11/2015
- Phantom: SAM (20deg probe tilt) with CRP v5.0; Type: QD000P40CD;
- DASY52 52.8.7(1137); SEMCAD X 14.6.10(7164)

RIGHT HEAD/2ST-R-C 2/Area Scan (7x11x1): Measurement grid: $dx=15$ mm, $dy=15$ mm
Maximum value of SAR (measured) = 0.542 W/kg

RIGHT HEAD/2ST-R-C 2/Zoom Scan (5x5x7)/Cube 0: Measurement grid: $dx=8$ mm, $dy=8$ mm, $dz=5$ mm
Reference Value = 10.782 V/m; Power Drift = -0.04 dB
Peak SAR (extrapolated) = 0.827 W/kg
SAR(1 g) = 0.457 W/kg; SAR(10 g) = 0.239 W/kg
Maximum value of SAR (measured) = 0.646 W/kg



Test Laboratory: AGC Lab
GPRS 1900 Mid-Body- Back (2up) < SIM 2>
DUT: 2G GSM Mobile Phone; Type: Noit 18

Date: July 22,2015

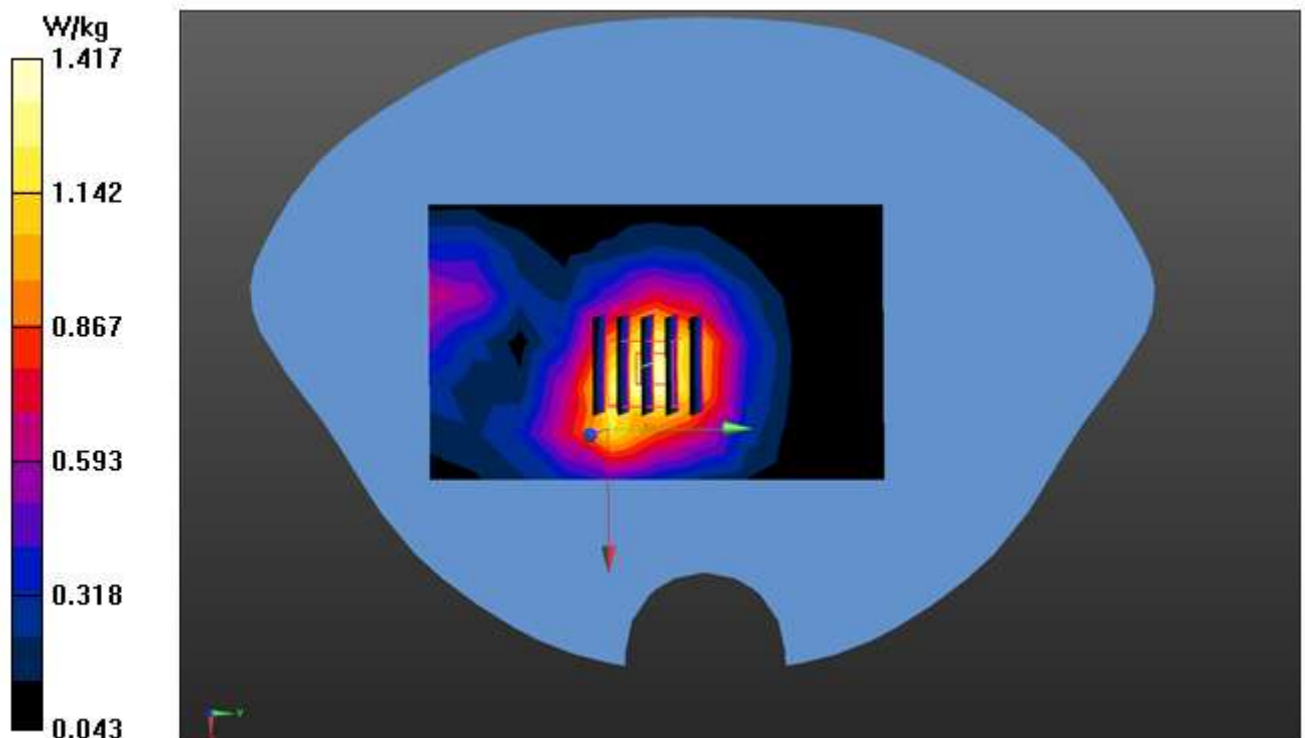
Communication System: GPRS-2 Slot; Communication System Band: PCS 1900 (1850.2 – 1909.8 MHz); Duty Cycle:1:4.2; Frequency: 1880 MHz; Medium parameters used: $f = 1900$ MHz; $\sigma = 1.51$ mho/m; $\epsilon_r = 53.69$; $\rho = 1000$ kg/m³ ;
Phantom section: Flat Section
Ambient temperature (°C):22.4, Liquid temperature (°C): 22.3

DASY Configuration:

- Probe: EX3DV4 - SN3953; ConvF(7.79,7.79,7.79); Calibrated: 11/06/2014;
- Sensor-Surface: 2mm (Mechanical Surface Detection), $z = 1.0, 31.0$
- Electronics: DAE4 Sn1398; Calibrated: 03/11/2015
- Phantom: SAM (20deg probe tilt) with CRP v5.0; Type: QD000P40CD;
- DASY52 52.8.7(1137); SEMCAD X 14.6.10(7164)

BODY/2ST-BACK 2/Area Scan (7x11x1): Measurement grid: $dx=15$ mm, $dy=15$ mm
Maximum value of SAR (measured) = 1.41 W/kg

BODY/2ST-BACK 2/Zoom Scan (5x5x7)/Cube 0: Measurement grid: $dx=8$ mm, $dy=8$ mm, $dz=5$ mm
Reference Value = 28.245 V/m; Power Drift = -0.12 dB
Peak SAR (extrapolated) = 1.74 W/kg
SAR(1 g) = 1.09 W/kg; SAR(10 g) = 0.662 W/kg
Maximum value of SAR (measured) = 1.42 W/kg



Repeated SAR

Test Laboratory: AGC Lab

Date: July 20,2015

GPRS 850 Mid- Body- Back (2up)

DUT: 2G GSM Mobile Phone; Type: Noit 18

Communication System: GPRS-2 Slot; Communication System Band: GSM 850 (824.2 – 848.8 MHz); Duty Cycle:1:4.2;;Frequency: 836.6 MHz; Medium parameters used: $f = 835$ MHz; $\sigma = 0.98$ mho/m; $\epsilon_r = 55.79$; $\rho = 1000$ kg/m³ ;

Phantom section: Flat Section

Ambient temperature (°C):22.7, Liquid temperature (°C): 22.6

DASY Configuration:

- Probe: EX3DV4 - SN3953; ConvF(10.08,10.08, 10.08); Calibrated: 11/06/2014;
- Sensor-Surface: 2mm (Mechanical Surface Detection), $z = 1.0, 31.0$
- Electronics: DAE4 Sn1398; Calibrated: 03/11/2015
- Phantom: SAM (20deg probe tilt) with CRP v5.0; Type: QDOVA002AA;
- DASY52 52.8.7(1137); SEMCAD X 14.6.10(7164)

BODY/REPEATED-2ST-BACK/Area Scan (7x11x1): Measurement grid: dx=15mm, dy=15mm

Maximum value of SAR (measured) = 0.999 W/kg

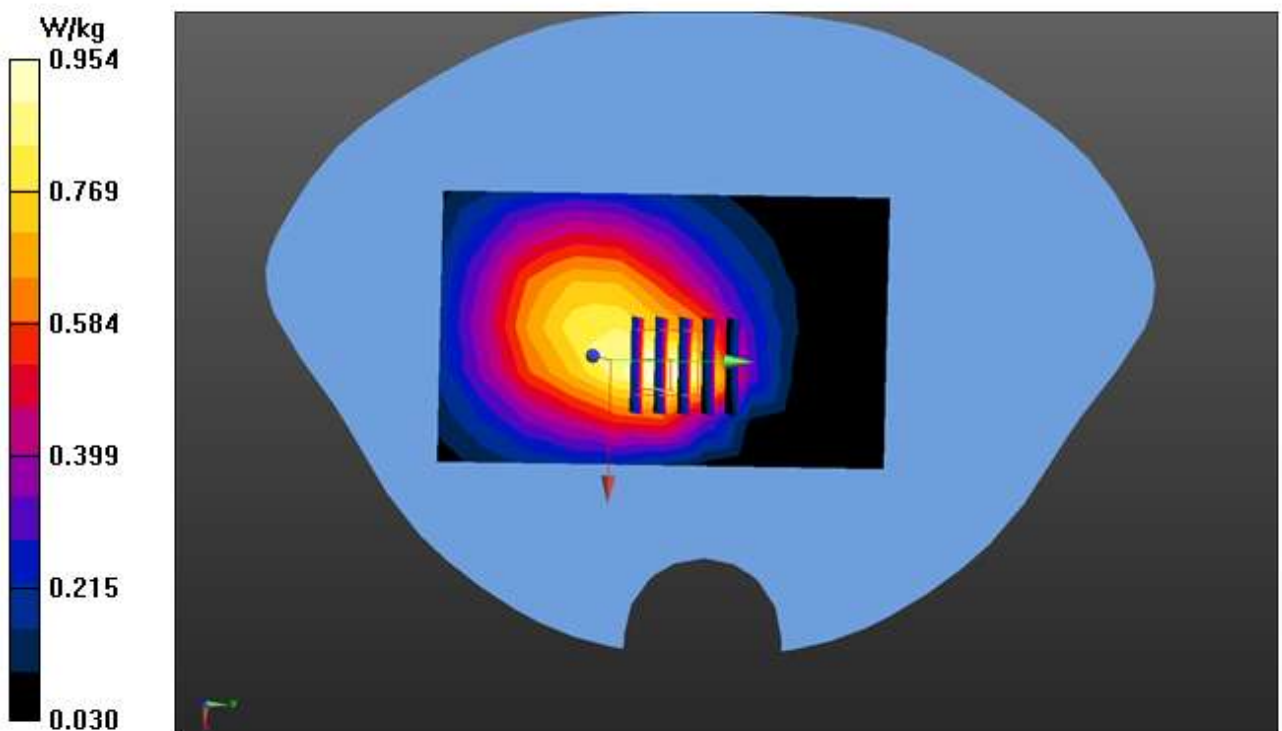
BODY/REPEATED-2ST-BACK/Zoom Scan (5x5x7)/Cube 0: Measurement grid: dx=8mm, dy=8mm, dz=5mm

Reference Value = 25.909 V/m; Power Drift = -0.14 dB

Peak SAR (extrapolated) = 1.20 W/kg

SAR(1 g) = 0.787 W/kg; SAR(10 g) = 0.504 W/kg

Maximum value of SAR (measured) = 0.954 W/kg



Test Laboratory: AGC Lab
GPRS 1900 Mid-Body- Back (2up)
DUT: 2G GSM Mobile Phone; Type: Noit 18

Date: July 22,2015

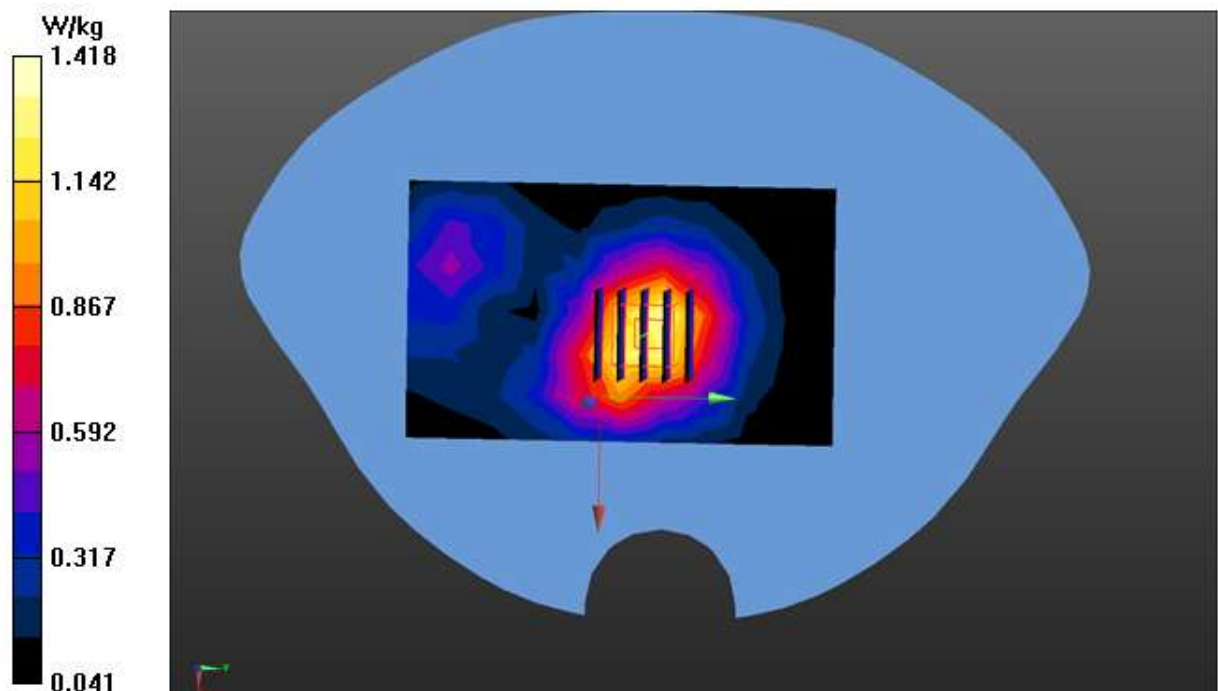
Communication System: GPRS-2 Slot; Communication System Band: PCS 1900 (1850.2 – 1909.8 MHz); Duty Cycle:1:4.2; Frequency: 1880 MHz; Medium parameters used: $f = 1900$ MHz; $\sigma = 1.51$ mho/m; $\epsilon_r = 53.69$; $\rho = 1000$ kg/m³ ;
Phantom section: Flat Section
Ambient temperature (°C):22.4, Liquid temperature (°C): 22.3

DASY Configuration:

- Probe: EX3DV4 - SN3953; ConvF(7.79,7.79,7.79); Calibrated: 11/06/2014;
- Sensor-Surface: 2mm (Mechanical Surface Detection), $z = 1.0, 31.0$
- Electronics: DAE4 Sn1398; Calibrated: 03/11/2015
- Phantom: SAM (20deg probe tilt) with CRP v5.0; Type: QD000P40CD;
- DASY52 52.8.7(1137); SEMCAD X 14.6.10(7164)

BODY/REPEATED-2ST-BACK/Area Scan (7x11x1): Measurement grid: $dx=15$ mm, $dy=15$ mm
Maximum value of SAR (measured) = 1.34 W/kg

BODY/REPEATED-2ST-BACK/Zoom Scan (5x5x7)/Cube 0: Measurement grid: $dx=8$ mm, $dy=8$ mm, $dz=5$ mm
Reference Value = 32.286 V/m; Power Drift = -0.10 dB
Peak SAR (extrapolated) = 1.75 W/kg
SAR(1 g) = 1.07 W/kg; SAR(10 g) = 0.644 W/kg
Maximum value of SAR (measured) = 1.42 W/kg



APPENDIX C. TEST SETUP PHOTOGRAPHS & EUT PHOTOGRAPHS

Refer to Attached files.

APPENDIX D. CALIBRATION DATA

Refer to Attached files.