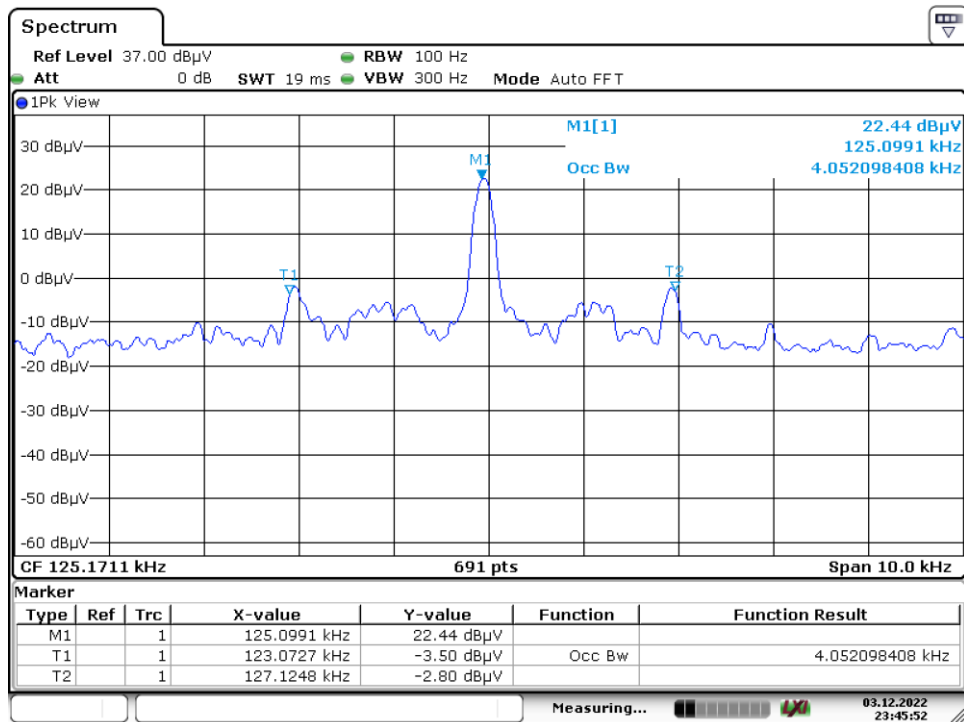


Appendix A: Test Results of FCC Part 15C

APPENDIX A: TEST RESULTS OF FCC PART 15C	1
APPENDIX A.1: TEST RESULTS OF 99% BANDWIDTH	2
<i>EPP</i>	2
<i>SAMSUNG</i>	2
APPENDIX A.2: TEST RESULTS OF 20DB BANDWIDTH	3
<i>EPP</i>	3
<i>SAMSUNG</i>	3
APPENDIX A.3: TEST RESULTS OF RADIATED SPURIOUS EMISSIONS	4
<i>EPP</i>	4
<i>SAMSUNG</i>	15

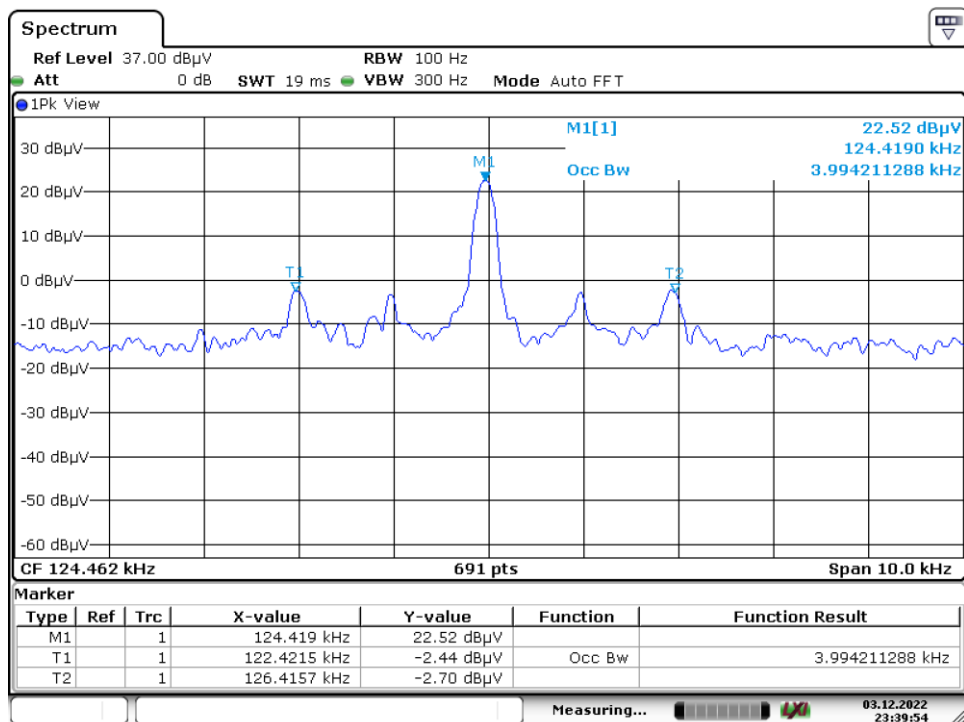
Appendix A.1: Test Results of 99% Bandwidth

EPP



Date: 3.DEC.2022 23:45:52

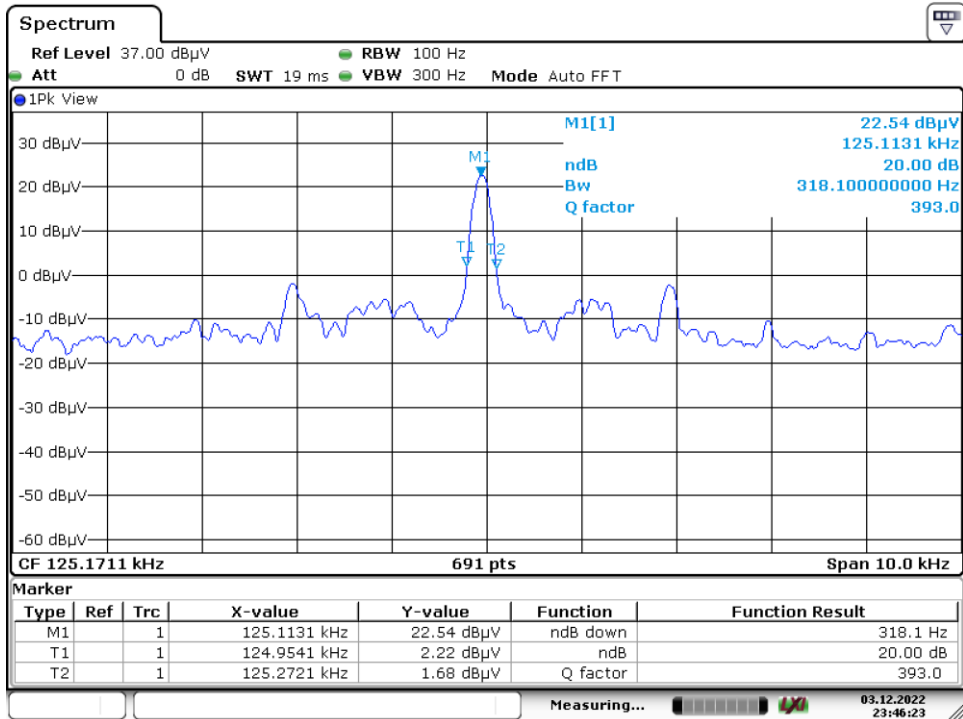
SAMSUNG



Date: 3.DEC.2022 23:39:54

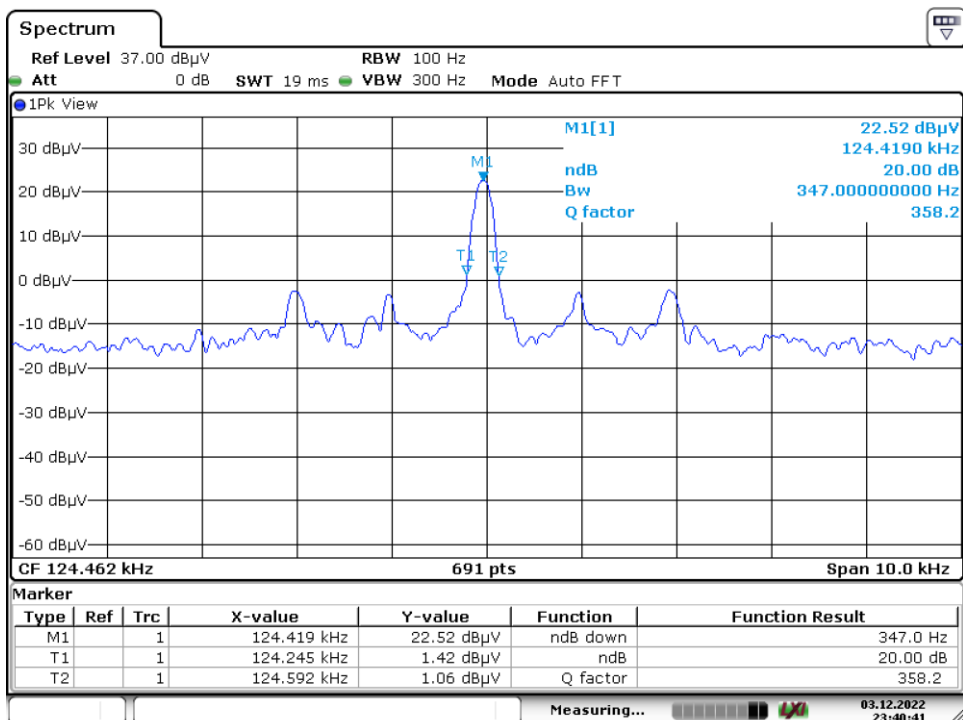
Appendix A.2: Test Results of 20dB Bandwidth

EPP



Date: 3. DEC. 2022 23:46:22

SAMSUNG



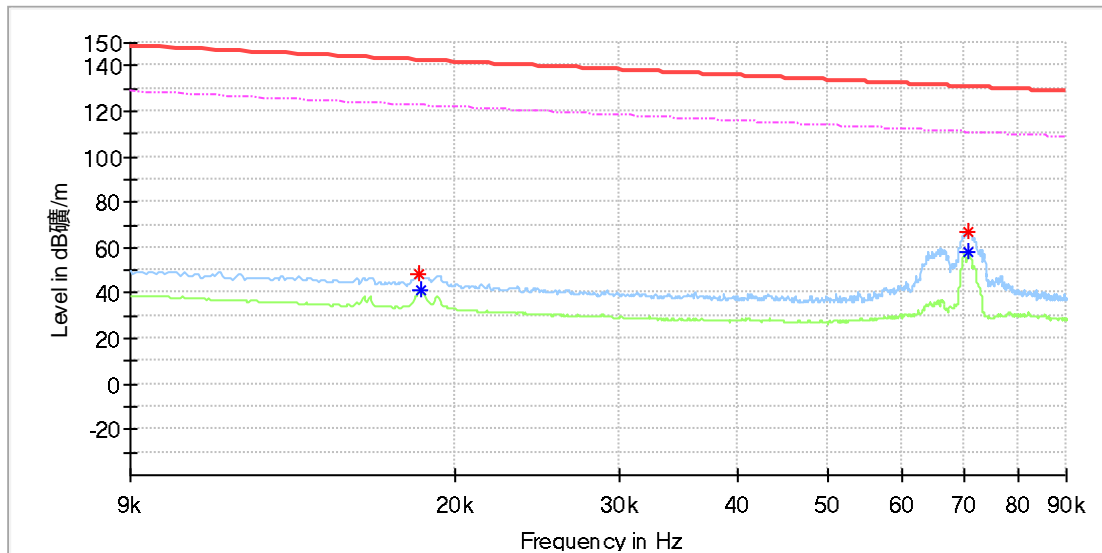
Date: 3. DEC. 2022 23:40:41

Appendix A.3: Test Results of Radiated Spurious Emissions

EPP

EUT Information

EUT Name:	MAGNETIC WIRELESS CAR CHARGER
Model:	WCH003
Test Mode:	Charging
Order No/Sample No:	168394651/A003367003-009
Test Voltage:	DC 12V
Remark:	Temp 23 Humi:53%
Test Standard:	FCC part 15C
Tested By:	Kei Zhang
Reviewed By:	Terry Yin

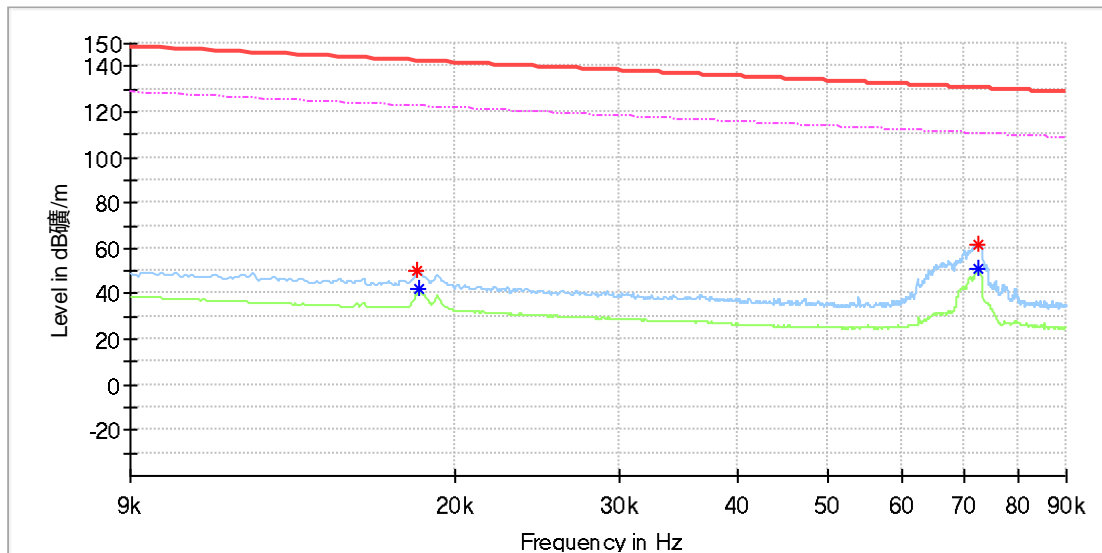


Critical Freqs

Frequency (MHz)	MaxPeak (dBµV/m)	Average (dBµV/m)	Limit (dBµV/m)	Margin (dB)	Height (cm)	Pol	Azimuth (deg)	Corr. (dB/m)
0.018315	48.80	---	142.33	93.53	100.0	X	58.0	20.0
0.018373	---	41.60	122.31	80.71	100.0	X	132.0	20.0
0.070791	66.91	---	130.60	63.69	100.0	X	82.0	20.0
0.070849	---	58.25	110.59	52.33	100.0	X	82.0	20.0

EUT Information

EUT Name: MAGNETIC WIRELESS CAR CHARGER
 Model: WCH003
 Test Mode: Charging
 Order No/Sample No: 168394651/A003367003-009
 Test Voltage: DC 12V
 Remark: Temp 23 Humi:53%
 Test Standard: FCC part 15C
 Tested By: Kei Zhang
 Reviewed By: Terry Yin

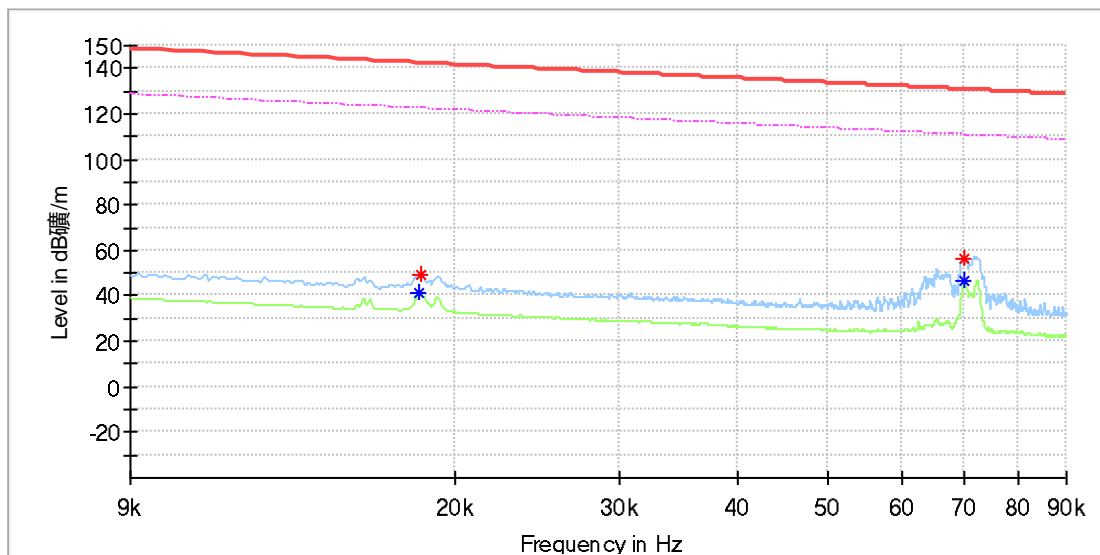


Critical Freqs

Frequency (MHz)	MaxPeak (dBµV/m)	Average (dBµV/m)	Limit (dBµV/m)	Margin (dB)	Height (cm)	Pol	Azimuth (deg)	Corr. (dB/m)
0.018257	50.14	---	142.36	92.22	100.0	Y	193.0	20.0
0.018315	---	41.83	122.33	80.50	100.0	Y	193.0	20.0
0.072469	---	51.43	110.39	58.96	100.0	Y	25.0	20.0
0.072585	61.38	---	130.38	69.00	100.0	Y	25.0	20.0

EUT Information

EUT Name:	MAGNETIC WIRELESS CAR CHARGER
Model:	WCH003
Test Mode:	Charging
Order No/Sample No:	168394651/A003367003-009
Test Voltage:	DC 12V
Remark:	Temp 23 Humi:53%
Test Standard:	FCC part 15C
Tested By:	Kei Zhang
Reviewed By:	Terry Yin

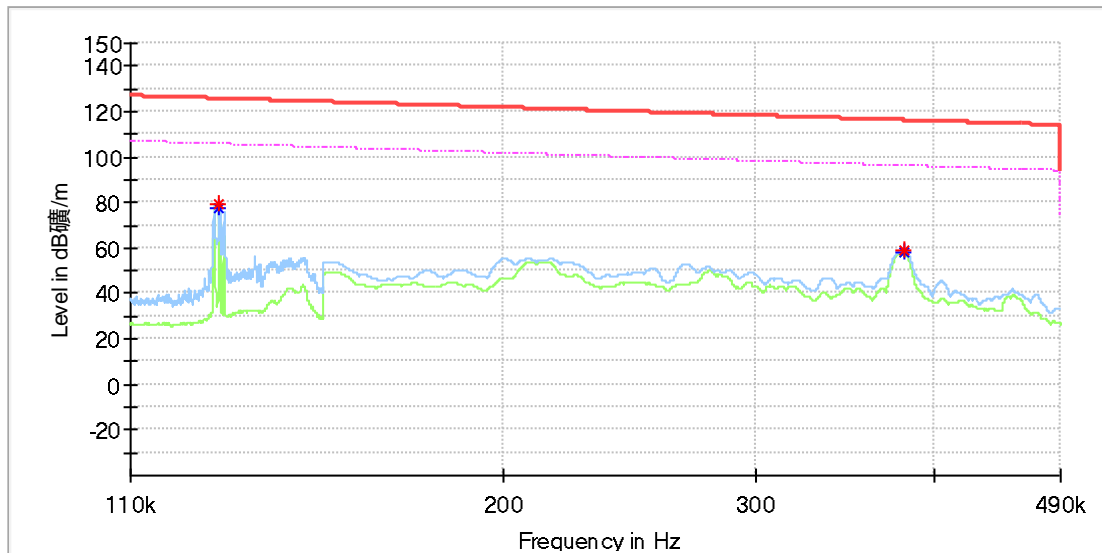


Critical Freqs

Frequency (MHz)	MaxPeak (dBµV/m)	Average (dBµV/m)	Limit (dBµV/m)	Margin (dB)	Height (cm)	Pol	Azimuth (deg)	Corr. (dB/m)
0.018315	---	41.32	122.33	81.01	100.0	Z	120.0	20.0
0.018373	49.40	---	142.31	92.90	100.0	Z	120.0	20.0
0.070039	---	46.72	110.69	63.97	100.0	Z	72.0	20.0
0.070155	56.65	---	130.67	74.03	100.0	Z	72.0	20.0

EUT Information

EUT Name: MAGNETIC WIRELESS CAR CHARGER
 Model: WCH003
 Test Mode: Charging
 Order No/Sample No: 168394651/A003367003-009
 Test Voltage: DC 12V
 Remark: Temp 23 Humi:53%
 Test Standard: FCC part 15C
 Tested By: Kei Zhang
 Reviewed By: Terry Yin

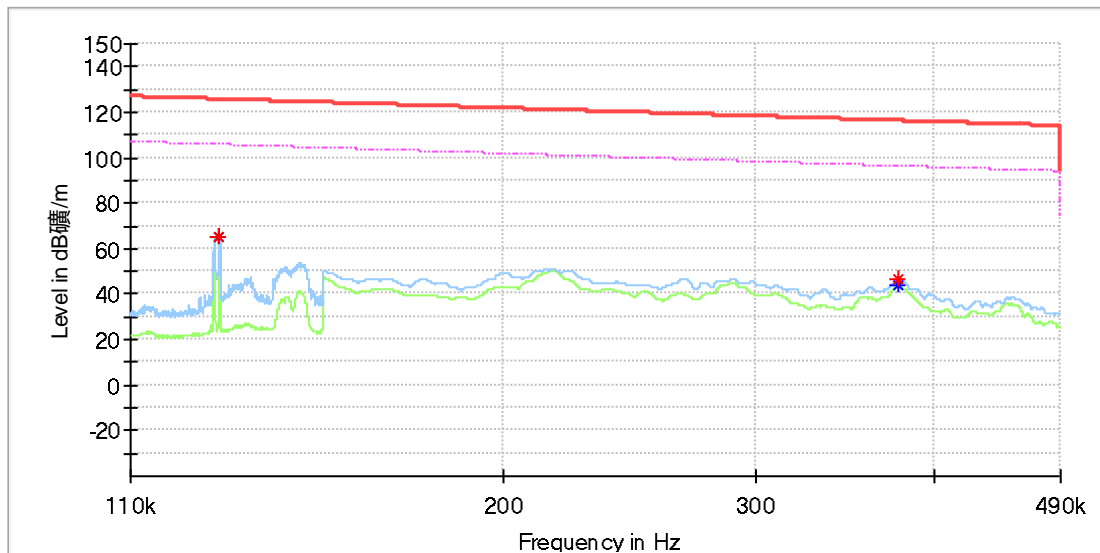


Critical_Freqs

Frequency (MHz)	MaxPeak (dBµV/m)	Average (dBµV/m)	Limit (dBµV/m)	Margin (dB)	Height (cm)	Pol	Azimuth (deg)	Corr. (dB/m)
0.126857	---	77.11	105.53	28.42	100.0	X	79.0	20.0
0.126886	79.65	---	125.53	45.88	100.0	X	79.0	20.0
0.380900	---	57.73	95.99	38.25	100.0	X	99.0	20.0
0.381000	59.30	---	115.98	56.68	100.0	X	99.0	20.0

EUT Information

EUT Name:	MAGNETIC WIRELESS CAR CHARGER
Model:	WCH003
Test Mode:	Charging
Order No/Sample No:	168394651/A003367003-009
Test Voltage:	DC 12V
Remark:	Temp 23 Humi:53%
Test Standard:	FCC part 15C
Tested By:	Kei Zhang
Reviewed By:	Terry Yin

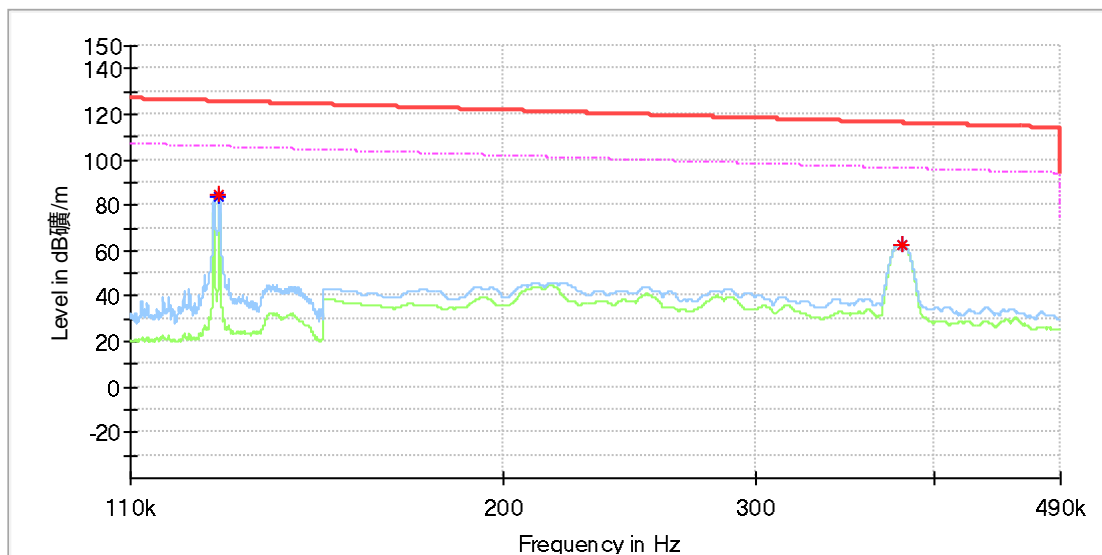


Critical Freqs

Frequency (MHz)	MaxPeak (dBµV/m)	Average (dBµV/m)	Limit (dBµV/m)	Margin (dB)	Height (cm)	Pol	Azimuth (deg)	Corr. (dB/m)
0.126857	65.28	---	125.53	60.26	100.0	Y	188.0	20.0
0.126857	---	64.87	105.53	40.66	100.0	Y	188.0	20.0
0.377500	46.39	---	116.06	69.68	100.0	Y	37.0	20.0
0.378000	---	43.63	96.05	52.42	100.0	Y	37.0	20.0

EUT Information

EUT Name:	MAGNETIC WIRELESS CAR CHARGER
Model:	WCH003
Test Mode:	Charging
Order No/Sample No:	168394651/A003367003-009
Test Voltage:	DC 12V
Remark:	Temp 23 Humi:53%
Test Standard:	FCC part 15C
Tested By:	Kei Zhang
Reviewed By:	Terry Yin

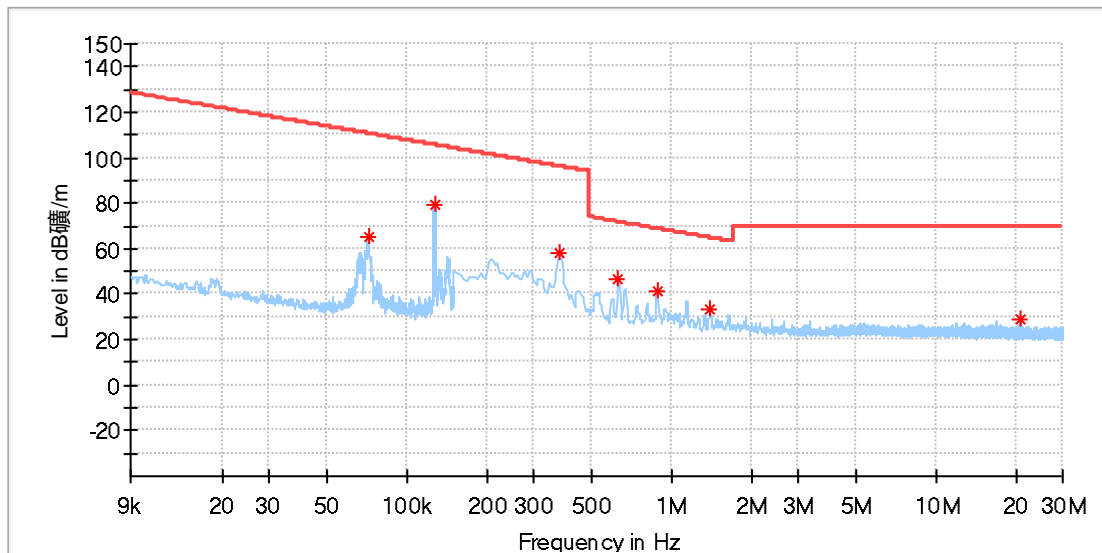


Critical Freqs

Frequency (MHz)	MaxPeak (dBµV/m)	Average (dBµV/m)	Limit (dBµV/m)	Margin (dB)	Height (cm)	Pol	Azimuth (deg)	Corr. (dB/m)
0.126857	---	83.82	105.53	21.71	100.0	Z	98.0	20.0
0.126857	84.31	---	125.53	41.22	100.0	Z	98.0	20.0
0.380500	---	62.25	96.00	33.74	100.0	Z	100.0	20.0
0.380550	62.55	---	115.99	53.44	100.0	Z	100.0	20.0

EUT Information

EUT Name:	MAGNETIC WIRELESS CAR CHARGER
Model:	WCH003
Test Mode:	Charging
Order No/Sample No:	168394651/A003367003-009
Test Voltage:	DC 12V
Remark:	Temp 23 Humi:53%
Test Standard:	FCC part 15C
Tested By:	Kei Zhang
Reviewed By:	Terry Yin

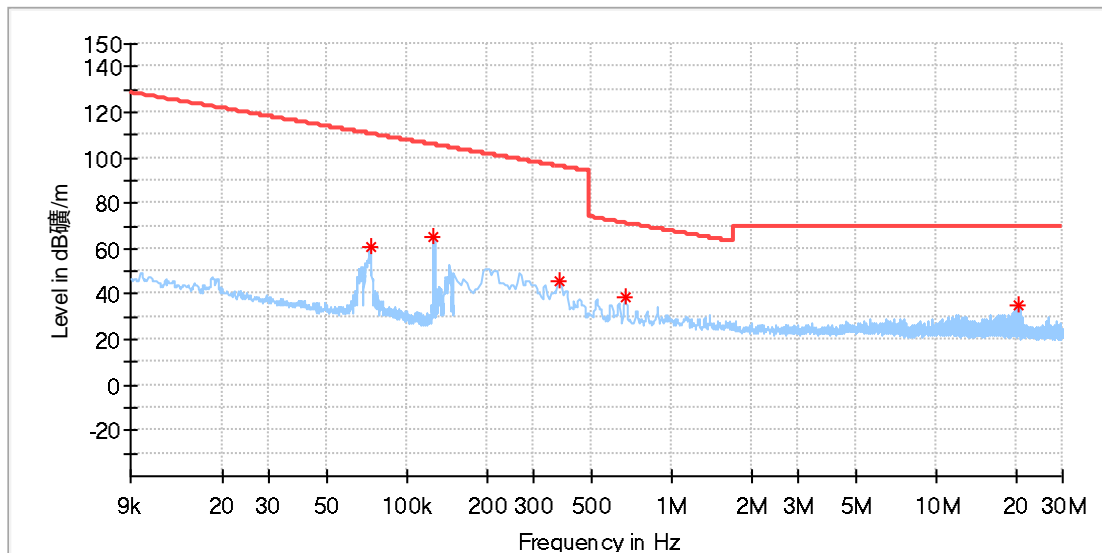


Critical Freqs

Frequency (MHz)	MaxPeak (dBµV/m)	Limit (dBµV/m)	Margin (dB)	Height (cm)	Pol	Azimuth (deg)	Corr. (dB/m)
0.071443	65.23	110.52	45.29	100.0	X	74.0	20.1
0.126936	79.63	105.53	25.89	100.0	X	100.0	20.1
0.378265	58.25	96.05	37.80	100.0	X	73.0	20.1
0.628478	47.00	71.64	24.64	100.0	X	102.0	20.1
0.887471	41.56	68.66	27.09	100.0	X	79.0	20.1
1.392287	33.15	64.76	31.61	100.0	X	73.0	20.1
20.900140	28.71	69.50	40.79	100.0	X	116.0	20.6

EUT Information

EUT Name: MAGNETIC WIRELESS CAR CHARGER
 Model: WCH003
 Test Mode: Charging
 Order No/Sample No: 168394651/A003367003-009
 Test Voltage: DC 12V
 Remark: Temp 23 Humi:53%
 Test Standard: FCC part 15C
 Tested By: Kei Zhang
 Reviewed By: Terry Yin

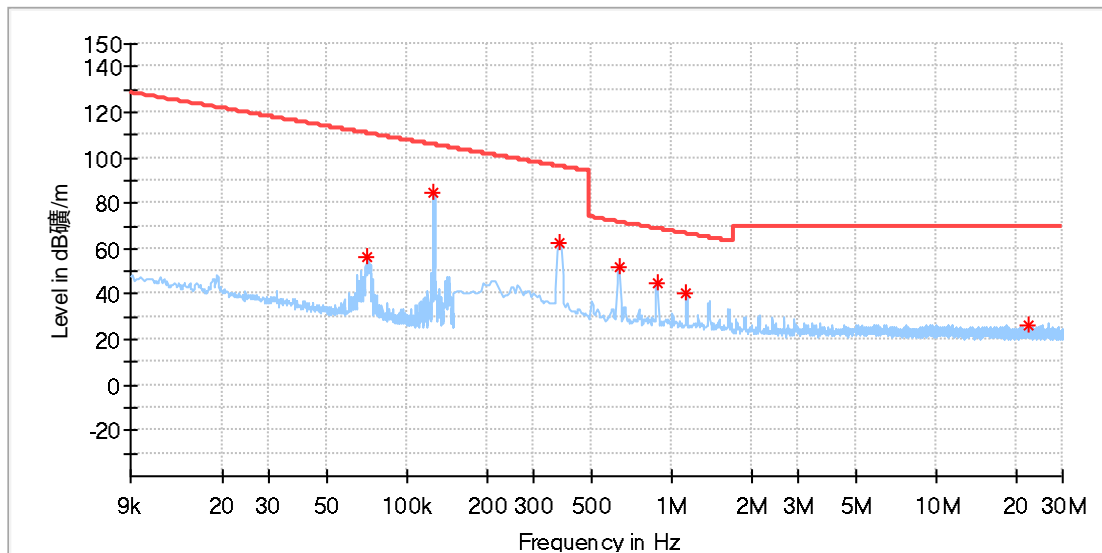


Critical Freqs

Frequency (MHz)	MaxPeak (dBµV/m)	Limit (dBµV/m)	Margin (dB)	Height (cm)	Pol	Azimuth (deg)	Corr. (dB/m)
0.072551	60.65	110.38	49.73	100.0	Y	25.0	20.1
0.125929	65.17	105.60	40.42	100.0	Y	197.0	20.1
0.373875	46.03	96.15	50.12	100.0	Y	1.0	20.1
0.667985	38.27	71.12	32.85	100.0	Y	35.0	20.1
20.390934	34.86	69.50	34.64	100.0	Y	66.0	20.6

EUT Information

EUT Name: MAGNETIC WIRELESS CAR CHARGER
 Model: WCH003
 Test Mode: Charging
 Order No/Sample No: 168394651/A003367003-009
 Test Voltage: DC 12V
 Remark: Temp 23 Humi:53%
 Test Standard: FCC part 15C
 Tested By: Kei Zhang
 Reviewed By: Terry Yin

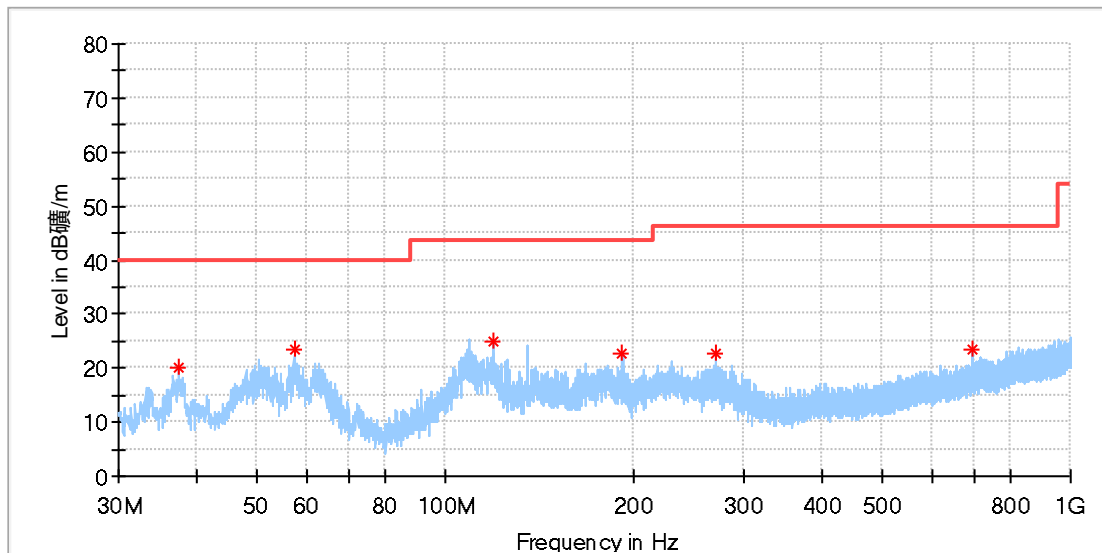


Critical Freqs

Frequency (MHz)	MaxPeak (dBµV/m)	Limit (dBµV/m)	Margin (dB)	Height (cm)	Pol	Azimuth (deg)	Corr. (dB/m)
0.070536	56.01	110.63	54.61	100.0	Z	78.0	20.1
0.125929	84.32	105.60	21.28	100.0	Z	60.0	20.1
0.373875	62.69	96.15	33.46	100.0	Z	118.0	20.1
0.632868	52.33	71.58	19.25	100.0	Z	125.0	20.1
0.878691	45.12	68.74	23.62	100.0	Z	39.0	20.1
1.128905	40.40	66.57	26.17	100.0	Z	130.0	20.1
22.467265	26.02	69.50	43.48	100.0	Z	287.0	20.6

EUT Information

EUT Name:	MAGNETIC WIRELESS CAR CHARGER
Model:	WCH003
Test Mode:	Charging
Order No/Sample No:	168394651/A003367003-009
Test Voltage:	DC 12V
Remark:	Temp 23 Humi:53%
Test Standard:	FCC part 15C
Tested By:	Kei Zhang
Reviewed By:	Terry Yin

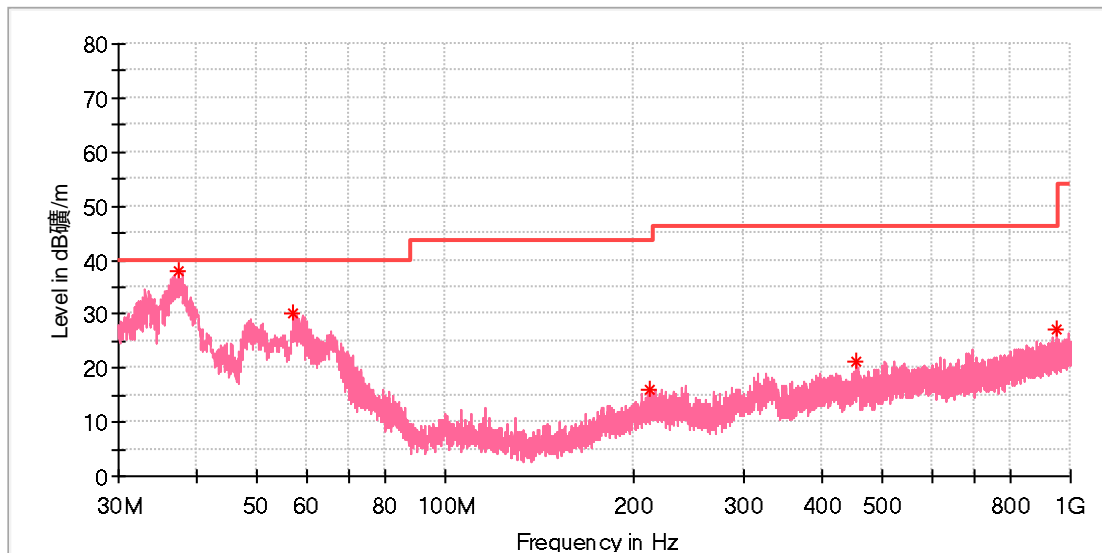


Critical Freqs

Frequency (MHz)	MaxPeak (dBµV/m)	Limit (dBµV/m)	Margin (dB)	Height (cm)	Pol	Azimuth (deg)	Corr. (dB/m)
37.424231	20.23	40.00	19.77	100.0	H	0.0	-21.3
57.271923	23.33	40.00	16.67	100.0	H	0.0	-19.0
119.202692	25.08	43.50	18.42	100.0	H	0.0	-20.9
192.027308	22.74	43.50	20.76	100.0	H	118.0	-19.7
270.373462	22.56	46.00	23.44	100.0	H	25.0	-17.2
698.964231	23.38	46.00	22.62	100.0	H	57.0	-8.4

EUT Information

EUT Name:	MAGNETIC WIRELESS CAR CHARGER
Model:	WCH003
Test Mode:	Charging
Order No/Sample No:	168394651/A003367003-009
Test Voltage:	DC 12V
Remark:	Temp 23 Humi:53%
Test Standard:	FCC part 15C
Tested By:	Kei Zhang
Reviewed By:	Terry Yin



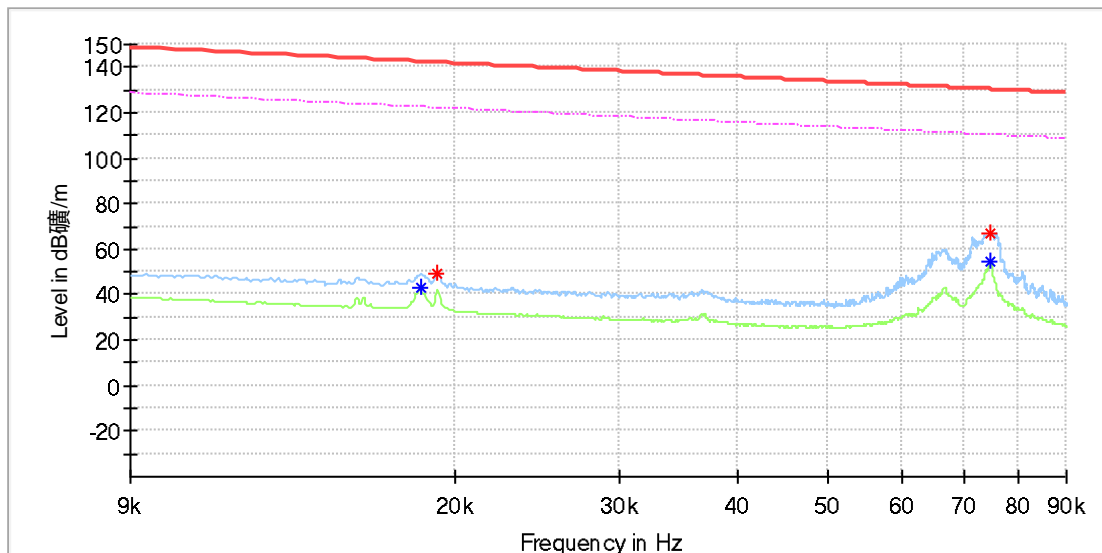
Critical Freqs

Frequency (MHz)	MaxPeak (dBµV/m)	Limit (dBµV/m)	Margin (dB)	Height (cm)	Pol	Azimuth (deg)	Corr. (dB/m)
37.461539	37.79	40.00	2.21	100.0	V	47.0	-21.3
57.122692	30.01	40.00	9.99	100.0	V	6.0	-19.0
211.986923	15.98	43.50	27.52	100.0	V	38.0	-19.1
454.188462	21.09	46.00	24.91	100.0	V	96.0	-13.2
952.693846	27.27	46.00	18.73	100.0	V	138.0	-4.8

SAMSUNG

EUT Information

EUT Name:	MAGNETIC WIRELESS CAR CHARGER
Model:	WCH003
Test Mode:	Charging
Order No/Sample No:	168394651/A003367003-009
Test Voltage:	DC 12V
Remark:	Temp 23 Humi:53%
Test Standard:	FCC part 15C
Tested By:	Kei Zhang
Reviewed By:	Terry Yin

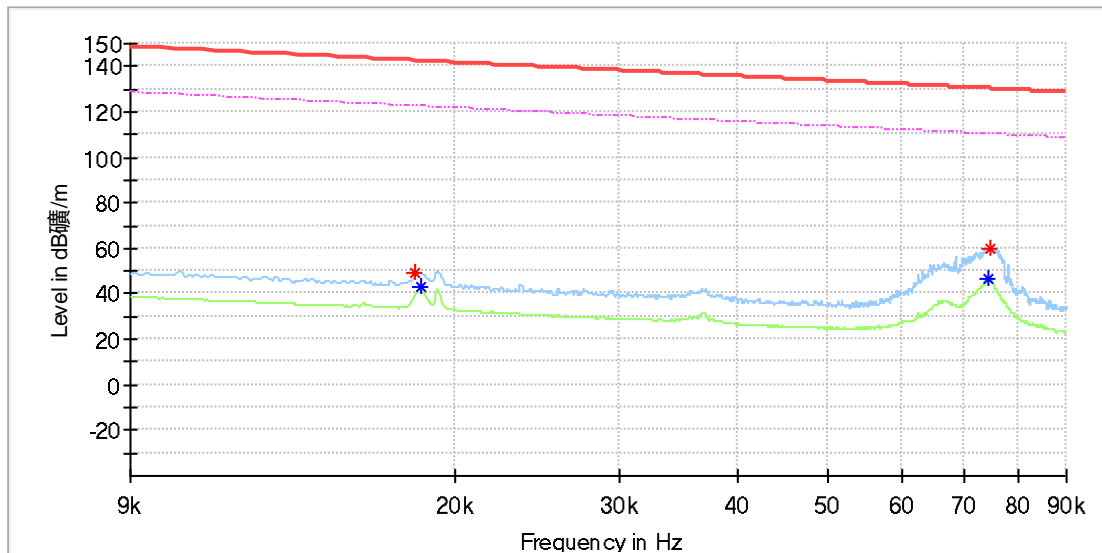


Critical Freqs

Frequency (MHz)	MaxPeak (dBµV/m)	Average (dBµV/m)	Limit (dBµV/m)	Margin (dB)	Height (cm)	Pol	Azimuth (deg)	Corr. (dB/m)
0.018373	---	42.69	122.31	79.62	100.0	X	314.0	20.0
0.019183	49.64	---	141.93	92.29	100.0	X	357.0	20.0
0.074668	---	54.79	110.13	55.35	100.0	X	74.0	20.0
0.074726	67.16	---	130.13	62.97	100.0	X	74.0	20.0

EUT Information

EUT Name: MAGNETIC WIRELESS CAR CHARGER
 Model: WCH003
 Test Mode: Charging
 Order No/Sample No: 168394651/A003367003-009
 Test Voltage: DC 12V
 Remark: Temp 23 Humi:53%
 Test Standard: FCC part 15C
 Tested By: Kei Zhang
 Reviewed By: Terry Yin

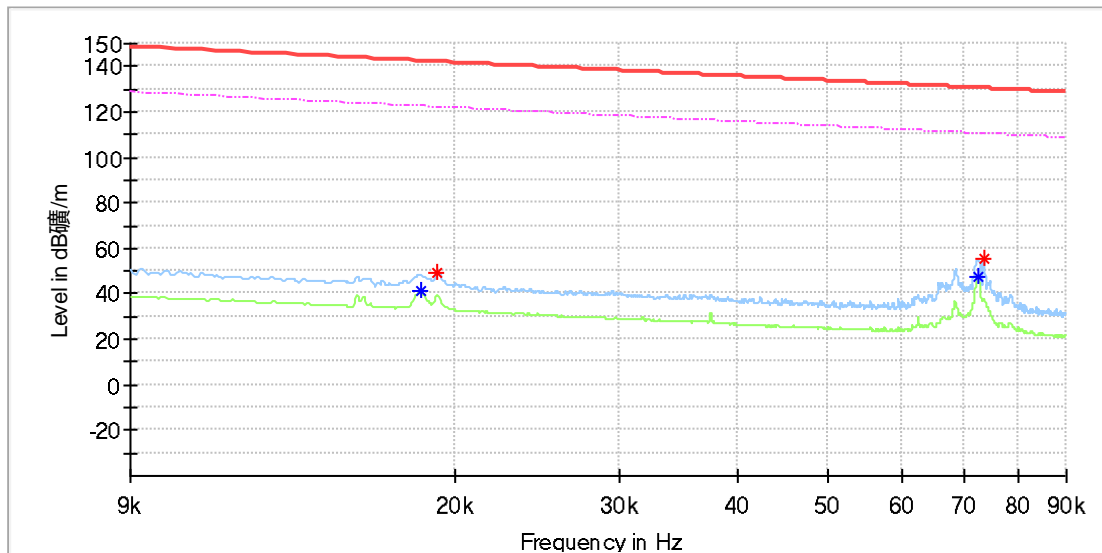


Critical Freqs

Frequency (MHz)	MaxPeak (dBµV/m)	Average (dBµV/m)	Limit (dBµV/m)	Margin (dB)	Height (cm)	Pol	Azimuth (deg)	Corr. (dB/m)
0.018141	49.41	---	142.42	93.01	100.0	Y	3.0	20.0
0.018373	---	42.79	122.31	79.52	100.0	Y	95.0	20.0
0.074205	---	46.79	110.19	63.39	100.0	Y	22.0	20.0
0.074494	59.69	---	130.15	70.46	100.0	Y	0.0	20.0

EUT Information

EUT Name:	MAGNETIC WIRELESS CAR CHARGER
Model:	WCH003
Test Mode:	Charging
Order No/Sample No:	168394651/A003367003-009
Test Voltage:	DC 12V
Remark:	Temp 23 Humi:53%
Test Standard:	FCC part 15C
Tested By:	Kei Zhang
Reviewed By:	Terry Yin

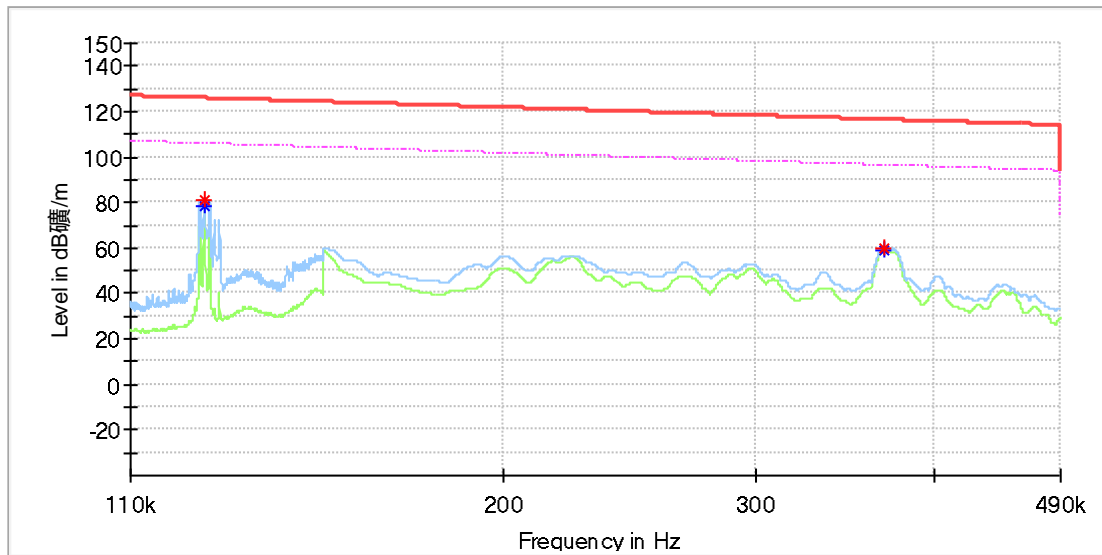


Critical Freqs

Frequency (MHz)	MaxPeak (dBµV/m)	Average (dBµV/m)	Limit (dBµV/m)	Margin (dB)	Height (cm)	Pol	Azimuth (deg)	Corr. (dB/m)
0.018373	---	41.73	122.31	80.58	100.0	Z	313.0	20.0
0.019183	49.33	---	141.93	92.60	100.0	Z	170.0	20.0
0.072469	---	47.83	110.39	62.56	100.0	Z	74.0	20.0
0.073453	55.85	---	130.28	74.42	100.0	Z	74.0	20.0

EUT Information

EUT Name: MAGNETIC WIRELESS CAR CHARGER
 Model: WCH003
 Test Mode: Charging
 Order No/Sample No: 168394651/A003367003-009
 Test Voltage: DC 12V
 Remark: Temp 23 Humi:53%
 Test Standard: FCC part 15C
 Tested By: Kei Zhang
 Reviewed By: Terry Yin

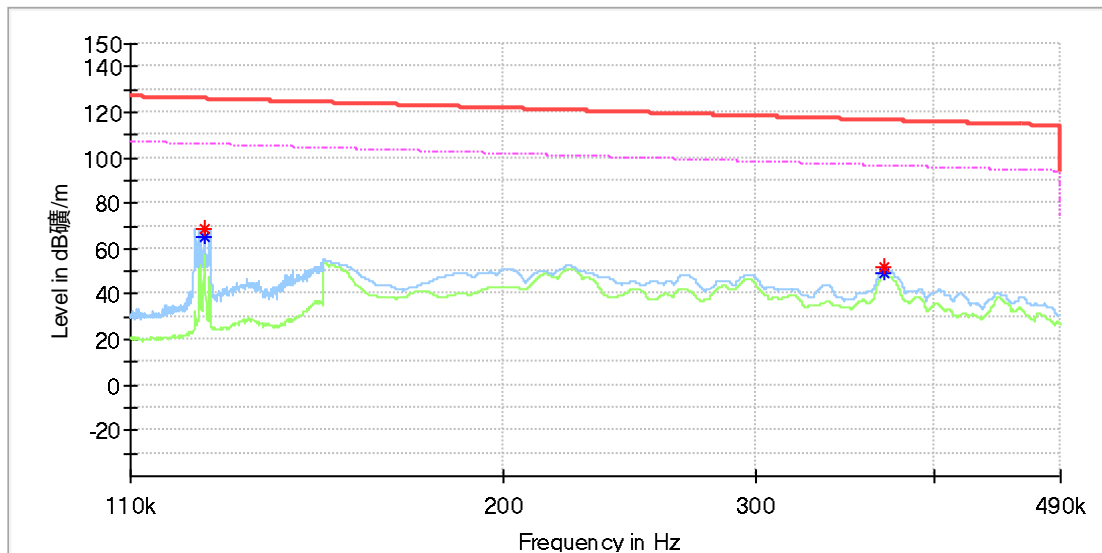


Critical_Freqs

Frequency (MHz)	MaxPeak (dBµV/m)	Average (dBµV/m)	Limit (dBµV/m)	Margin (dB)	Height (cm)	Pol	Azimuth (deg)	Corr. (dB/m)
0.123914	81.08	---	125.74	44.65	100.0	X	315.0	20.0
0.123914	---	78.44	105.74	27.30	100.0	X	315.0	20.0
0.368800	---	59.16	96.27	37.10	100.0	X	314.0	20.0
0.369100	60.05	---	116.26	56.21	100.0	X	314.0	20.0

EUT Information

EUT Name:	MAGNETIC WIRELESS CAR CHARGER
Model:	WCH003
Test Mode:	Charging
Order No/Sample No:	168394651/A003367003-009
Test Voltage:	DC 12V
Remark:	Temp 23 Humi:53%
Test Standard:	FCC part 15C
Tested By:	Kei Zhang
Reviewed By:	Terry Yin

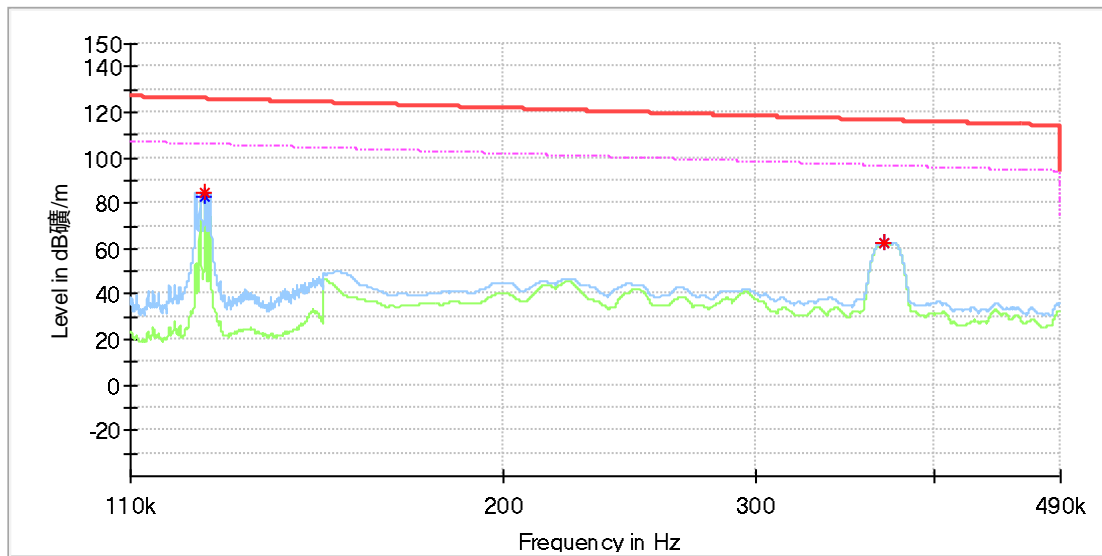


Critical Freqs

Frequency (MHz)	MaxPeak (dBµV/m)	Average (dBµV/m)	Limit (dBµV/m)	Margin (dB)	Height (cm)	Pol	Azimuth (deg)	Corr. (dB/m)
0.123914	---	65.04	105.74	40.69	100.0	Y	241.0	20.0
0.123943	68.93	---	125.73	56.81	100.0	Y	241.0	20.0
0.369550	---	48.92	96.25	47.33	100.0	Y	41.0	20.0
0.369650	51.79	---	116.25	64.46	100.0	Y	41.0	20.0

EUT Information

EUT Name:	MAGNETIC WIRELESS CAR CHARGER
Model:	WCH003
Test Mode:	Charging
Order No/Sample No:	168394651/A003367003-009
Test Voltage:	DC 12V
Remark:	Temp 23 Humi:53%
Test Standard:	FCC part 15C
Tested By:	Kei Zhang
Reviewed By:	Terry Yin

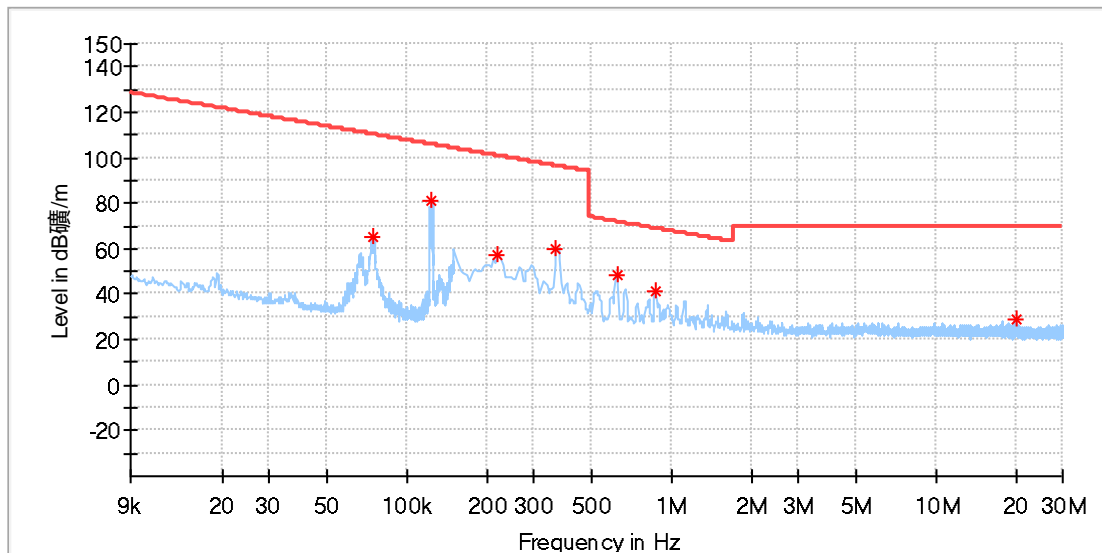


Critical Freqs

Frequency (MHz)	MaxPeak (dBµV/m)	Average (dBµV/m)	Limit (dBµV/m)	Margin (dB)	Height (cm)	Pol	Azimuth (deg)	Corr. (dB/m)
0.124029	---	82.52	105.73	23.21	100.0	Z	335.0	20.0
0.124057	84.85	---	125.73	40.88	100.0	Z	335.0	20.0
0.369050	---	62.43	96.26	33.83	100.0	Z	298.0	20.0
0.369250	62.57	---	116.26	53.69	100.0	Z	298.0	20.0

EUT Information

EUT Name: MAGNETIC WIRELESS CAR CHARGER
 Model: WCH003
 Test Mode: Charging
 Order No/Sample No: 168394651/A003367003-009
 Test Voltage: DC 12V
 Remark: Temp 23 Humi:53%
 Test Standard: FCC part 15C
 Tested By: Kei Zhang
 Reviewed By: Terry Yin

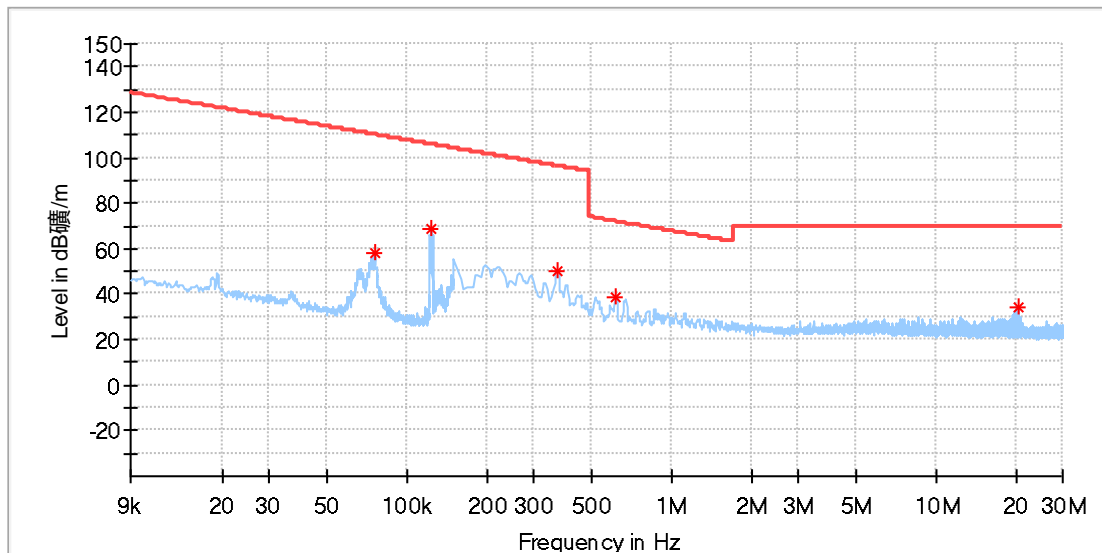


Critical Freqs

Frequency (MHz)	MaxPeak (dBµV/m)	Limit (dBµV/m)	Margin (dB)	Height (cm)	Pol	Azimuth (deg)	Corr. (dB/m)
0.074766	65.35	110.12	44.77	100.0	X	65.0	20.1
0.123915	81.13	105.74	24.61	100.0	X	321.0	20.1
0.220235	57.25	100.74	43.49	100.0	X	81.0	20.1
0.365096	59.61	96.35	36.75	100.0	X	316.0	20.1
0.624088	48.23	71.71	23.47	100.0	X	324.0	20.1
0.865522	41.68	68.87	27.20	100.0	X	0.0	20.1
20.074875	29.25	69.50	40.25	100.0	X	126.0	20.6

EUT Information

EUT Name:	MAGNETIC WIRELESS CAR CHARGER
Model:	WCH003
Test Mode:	Charging
Order No/Sample No:	168394651/A003367003-009
Test Voltage:	DC 12V
Remark:	Temp 23 Humi:53%
Test Standard:	FCC part 15C
Tested By:	Kei Zhang
Reviewed By:	Terry Yin

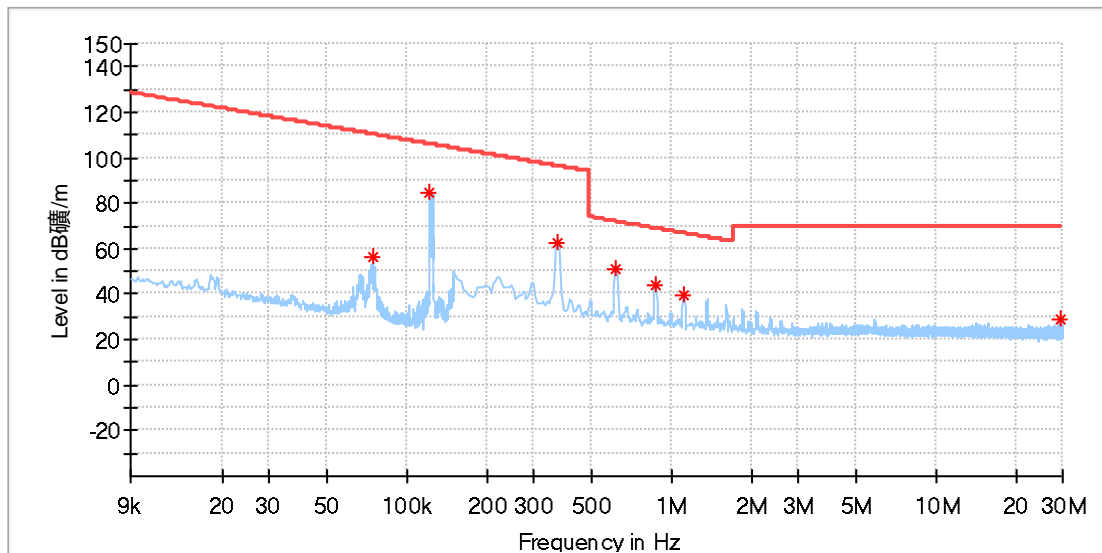


Critical Freqs

Frequency (MHz)	MaxPeak (dBµV/m)	Limit (dBµV/m)	Margin (dB)	Height (cm)	Pol	Azimuth (deg)	Corr. (dB/m)
0.075572	57.74	110.03	52.29	100.0	Y	0.0	20.1
0.123009	68.96	105.80	36.84	100.0	Y	236.0	20.1
0.369485	50.20	96.25	46.05	100.0	Y	51.0	20.1
0.615309	38.47	71.83	33.36	100.0	Y	55.0	20.1
20.325088	34.39	69.50	35.11	100.0	Y	0.0	20.6

EUT Information

EUT Name:	MAGNETIC WIRELESS CAR CHARGER
Model:	WCH003
Test Mode:	Charging
Order No/Sample No:	168394651/A003367003-009
Test Voltage:	DC 12V
Remark:	Temp 23 Humi:53%
Test Standard:	FCC part 15C
Tested By:	Kei Zhang
Reviewed By:	Terry Yin

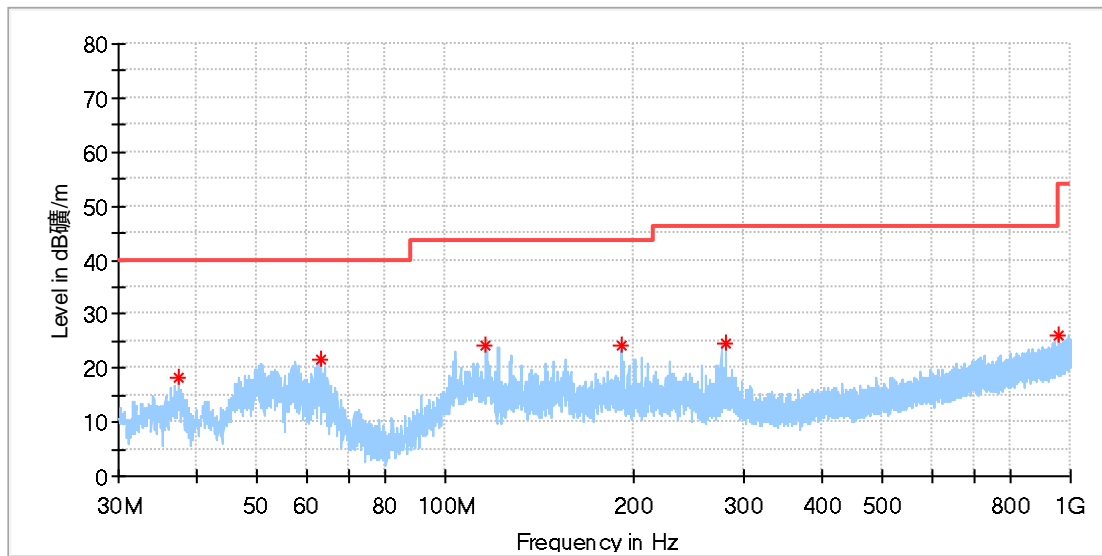


Critical Freqs

Frequency (MHz)	MaxPeak (dBµV/m)	Limit (dBµV/m)	Margin (dB)	Height (cm)	Pol	Azimuth (deg)	Corr. (dB/m)
0.074565	56.47	110.14	53.67	100.0	Z	71.0	20.1
0.122102	84.97	105.86	20.90	100.0	Z	300.0	20.1
0.369485	62.69	96.25	33.56	100.0	Z	317.0	20.1
0.615309	51.19	71.83	20.64	100.0	Z	342.0	20.1
0.865522	44.22	68.87	24.66	100.0	Z	310.0	20.1
1.106956	39.81	66.74	26.93	100.0	Z	356.0	20.1
29.640044	29.36	69.50	40.14	100.0	Z	57.0	20.7

EUT Information

EUT Name:	MAGNETIC WIRELESS CAR CHARGER
Model:	WCH003
Test Mode:	Charging
Order No/Sample No:	168394651/A003367003-009
Test Voltage:	DC 12V
Remark:	Temp 23 Humi:53%
Test Standard:	FCC part 15C
Tested By:	Kei Zhang
Reviewed By:	Terry Yin

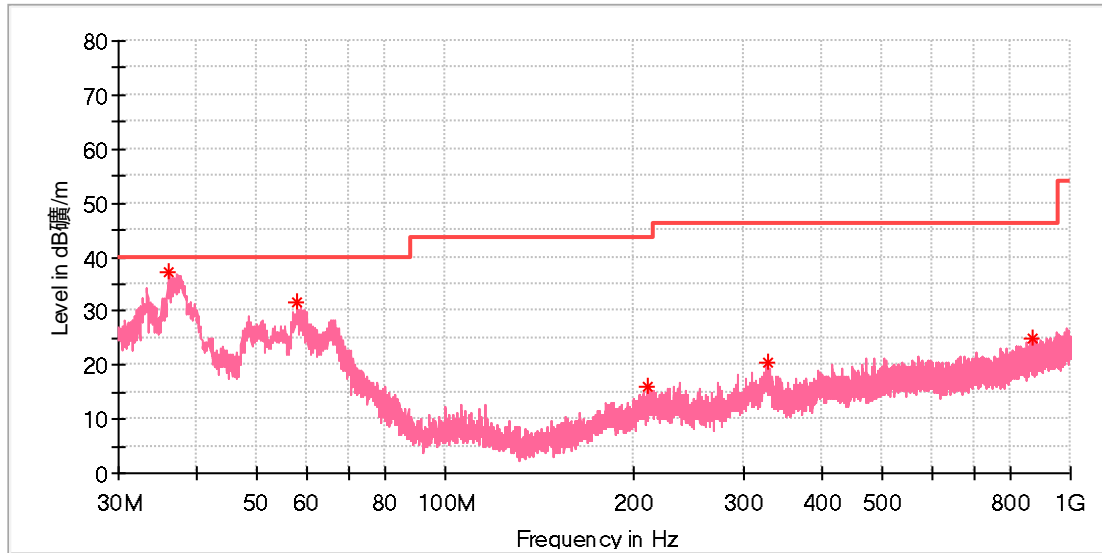


Critical Freqs

Frequency (MHz)	MaxPeak (dBµV/m)	Limit (dBµV/m)	Margin (dB)	Height (cm)	Pol	Azimuth (deg)	Corr. (dB/m)
37.498846	18.07	40.00	21.93	100.0	H	346.0	-21.2
63.091923	21.59	40.00	18.41	100.0	H	0.0	-20.0
116.218077	24.00	43.50	19.50	100.0	H	354.0	-20.3
191.094615	24.04	43.50	19.46	100.0	H	149.0	-19.8
280.931539	24.65	46.00	21.35	100.0	H	172.0	-17.1
953.999615	25.95	46.00	20.05	100.0	H	95.0	-4.8

EUT Information

EUT Name:	MAGNETIC WIRELESS CAR CHARGER
Model:	WCH003
Test Mode:	Charging
Order No/Sample No:	168394651/A003367003-009
Test Voltage:	DC 12V
Remark:	Temp 23 Humi:53%
Test Standard:	FCC part 15C
Tested By:	Kei Zhang
Reviewed By:	Terry Yin



Critical Freqs

Frequency (MHz)	MaxPeak (dBµV/m)	Limit (dBµV/m)	Margin (dB)	Height (cm)	Pol	Azimuth (deg)	Corr. (dB/m)
36.193077	37.22	40.00	2.78	100.0	V	327.0	-21.8
57.794231	31.44	40.00	8.56	100.0	V	157.0	-19.0
211.166154	15.89	43.50	27.61	100.0	V	36.0	-19.1
328.834615	20.58	46.00	25.42	100.0	V	28.0	-15.7
870.094615	25.03	46.00	20.97	100.0	V	116.0	-5.7